

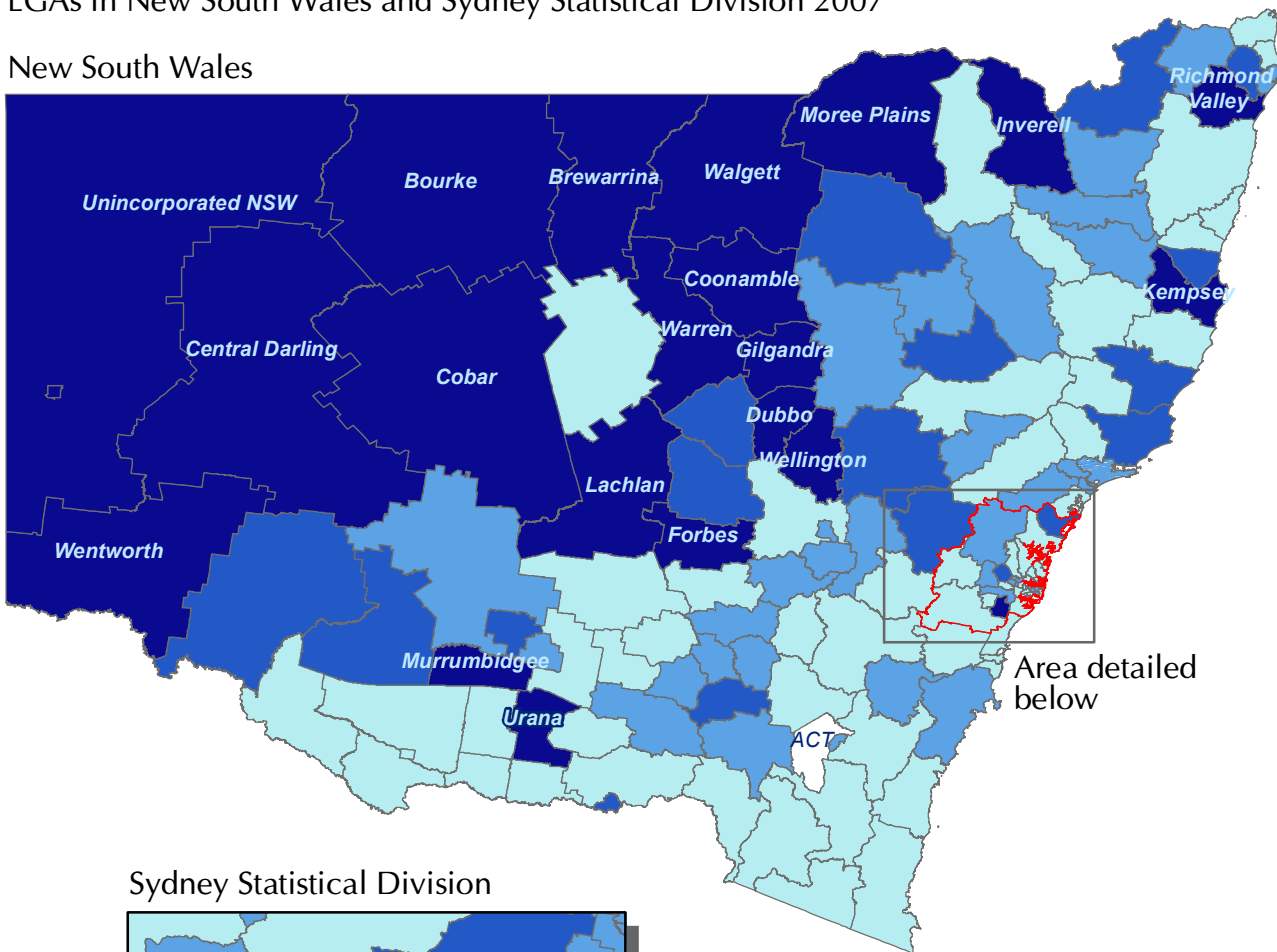
# New South Wales Recorded Crime Statistics 2007

## Assault-domestic violence related criminal incidents

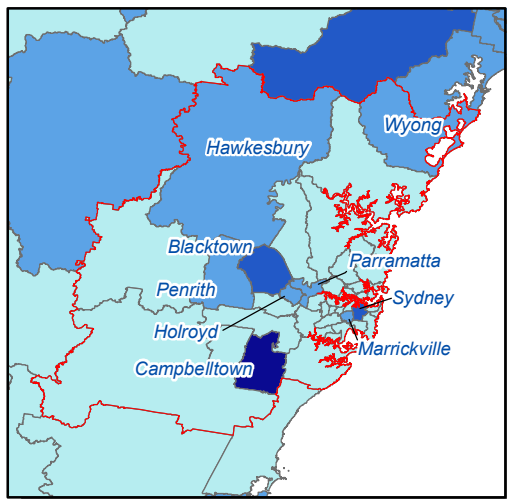
Rate per 100,000 population

LGAs in New South Wales and Sydney Statistical Division 2007

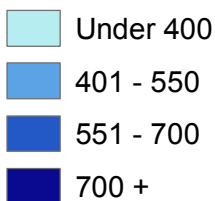
New South Wales



Sydney Statistical Division



### Rate per 100,000 population



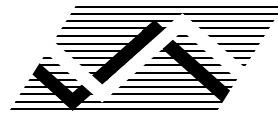


---

# **NEW SOUTH WALES RECORDED CRIME STATISTICS 2007**

---

**Derek Goh and Steve Moffatt**



NSW Bureau of Crime  
Statistics and Research

## ACKNOWLEDGEMENTS

The production of this report was greatly assisted by officers within the NSW Police Force. Special thanks are due to officers in Business and Technology Services and in Corporate Information, Executive Support Group. The following officers of the NSW Bureau of Crime Statistics and Research contributed significantly to the production of this report. Thanks to Florence Sin for guidance in the publishing of the report. Thanks also to Mark Ramsay and Tracy Painting of the Data Quality Unit for collecting, validating and advising on the data contained in the report. Thanks also to Arvind Varshney for the mapping work used in the report.

2008

Published by the NSW Bureau of Crime Statistics and Research  
Attorney General's Department  
Level 8  
St James Centre  
111 Elizabeth Street  
Sydney 2000  
Australia

Phone: + 61 (2) 9231 9190  
Fax: + 61 (2) 9231 9187  
Email: [bcsr@agd.nsw.gov.au](mailto:bcsr@agd.nsw.gov.au)  
Website: [www.bocsar.nsw.gov.au](http://www.bocsar.nsw.gov.au)  
ISSN 1035-9044

This report is available in pdf format on our website and may be provided in alternative formats. Please contact the Statistical Services Unit on 9231 9190 or email us at [bcsr@agd.nsw.gov.au](mailto:bcsr@agd.nsw.gov.au).

### Front Cover

**Assault - domestic violence related** criminal incidents for NSW in 2007 recorded a rate of 401.3 incidents per 100,000 of population. These are assault incidents which the NSW Police Force have recorded as being 'domestic violence related' (see Appendix 1, page 58). The lightest colour band on the map shows all LGAs recording a rate below the NSW rate. The top three colour bands include LGAs with domestic violence rates which start just above the NSW rate, then jump to above 1.38 and finally above 1.75 times the state rate for the darkest blue band. Within the darkest blue band there were six regional LGAs which recorded a rate more than three times the NSW rate. The NSW rate for recorded incidents of domestic violence has remained relatively constant for the past five years.

## INTRODUCTION

This report presents data on crime reported to, or detected by, the NSW Police Force from January 2005 to December 2007. The data were extracted from the Computerised Operational Policing System (COPS) of the NSW Police Force in January and February 2008.

The report includes an overview of trends in the most recent two-year period for a selection of serious offence categories, firstly for NSW in total and then across regions broken down to the level of Local Government Area. At the state level, for the two years to end of December 2007, one major offence category has been trending upwards; *steal from motor vehicle*. Three of the 17 major offence categories (*robbery with a weapon not a firearm*) and two theft offence types (*break and enter – non-dwelling* and *motor vehicle theft*) were trending downwards.

The format for this report has changed considerably since the last report. The focus has been shifted from State tabulations to comparisons of crime trends and offending rates for regions and LGAs (see Section 2, page 17). The shift in emphasis is consistent with the recommendations of a review of recorded crime statistics carried out in the United Kingdom by Professor Adrian Smith<sup>1</sup>. Note that all the incident and rate tabulations for all Statistical Divisions, Subdivisions and Local Government Areas for the past five years are available in a pdf or excel format on our website. The Bureau of Crime Statistics and Research is keen to receive any feedback on these changes.

Another issue addressed in this report is the problem of revision of data. This sometimes comes about when an incident has not been given the status of 'accepted and verified' by the time we extract the data for this report. This status is a requirement for inclusion in our reports. To reduce the impact of the revision problem, the current report has been constructed using the early February extract of COPS rather than the early January extract, as in past years.

Dr Don Weatherburn  
**Director**

April 2008

---

© State of New South Wales through the Attorney General's Department of NSW 2008. You may copy, distribute, display, download and otherwise freely deal with this work for any purpose, provided that you attribute the Attorney General's Department of NSW as the owner. However, you must obtain permission if you wish to (a) charge others for access to the work (other than at cost), (b) include the work in advertising or a product for sale, or (c) modify the work.

1. Smith, A 2006, *Crime Statistics: An independent review*, <<http://www.homeoffice.gov.uk/rds/pdfs06/crime-statistics-independent-review-06.pdf>>.

## CONTENTS

<b>DEFINITIONS AND EXPLANATORY NOTES</b>	. . .	4
<b>SECTION 1: OVERVIEW OF TRENDS IN RECORDED CRIME, NEW SOUTH WALES</b>	. . .	10
Summary Trends in recorded criminal incidents, major offences, January 2006 to December 2007, New South Wales	. . .	11
Table 1.1 Periodic trends in recorded criminal incidents for major offences, January 2002 to December 2007, New South Wales	. . .	12
Table 1.2 Number and trends in recorded criminal incidents for all offences, January 2006 to December 2007, New South Wales	. . .	13
Table 1.3 Number and outcome of 24-month trend tests for major offences in New South Wales Local Government Areas, March 2004 to December 2007	. . .	14
Figure 1.3A Number of Local Government Areas with significant upward trends for major offences, January 2005 to December 2007	. . .	15
Figure 1.3B Number of Local Government Areas with significant downward trends for major offences, January 2005 to December 2007	. . .	15
<b>SECTION 2: TRENDS, RATE COMPARISONS AND RECORDED CRIMINAL INCIDENTS FOR MAJOR OFFENCES, NEW SOUTH WALES REGIONS AND LOCAL GOVERNMENT AREAS</b>	. . .	17
Table 2.1A Trends in recorded criminal incidents for major offences, January 2006 to December 2007, New South Wales Statistical Divisions	. . .	18
Table 2.1B Ratio of the rate of recorded criminal incidents per 100,000 population compared with New South Wales for major offences, 2007, New South Wales Statistical Divisions	. . .	18
Table 2.1C Number of recorded criminal incidents for major offences, 2007, New South Wales Statistical Divisions	. . .	19
Table 2.1D Number of recorded criminal incidents for major offences, 2006, New South Wales Statistical Divisions	. . .	19
Table 2.2A Trends in recorded criminal incidents for major offences, January 2006 to December 2007, New South Wales Metropolitan Statistical Subdivisions	. . .	20
Table 2.2B Ratio of the rate of recorded criminal incidents per 100,000 population compared with New South Wales for major offences, 2007, New South Wales Metropolitan Statistical Subdivisions	. . .	20
Table 2.2C Number of recorded criminal incidents for major offences, 2007, New South Wales Metropolitan Statistical Subdivisions	. . .	21
Table 2.2D Number of recorded criminal incidents for major offences, 2006, New South Wales Metropolitan Statistical Subdivisions	. . .	21
Table 2.3A Trends in recorded criminal incidents for major offences, January 2006 to December 2007, New South Wales Local Government Areas	. . .	22
Table 2.3B Ratio of the rate of recorded criminal incidents per 100,000 population compared with New South Wales for major offences, 2007, New South Wales Local Government Areas	. . .	24

Table 2.3C	Number of recorded criminal incidents for major offences, 2007, New South Wales Local Government Areas	. . . 26
Table 2.3D	Number of recorded criminal incidents for major offences, 2006, New South Wales Local Government Areas	. . . 28
<b>SECTION 3: MONTHLY NUMBERS OF RECORDED CRIMINAL INCIDENTS, 2005, 2006 AND 2007, NEW SOUTH WALES</b>		. . . 31
Table 3.1	Monthly number of recorded criminal incidents for all offences, 2005, New South Wales	. . . 32
Table 3.2	Monthly number of recorded criminal incidents for all offences, 2006, New South Wales	. . . 36
Table 3.3	Monthly number of recorded criminal incidents for all offences, 2007, New South Wales	. . . 40
<b>SECTION 4: METHODS OF PROCEEDINGS AGAINST ALLEGED OFFENDERS, 2005, 2006 AND 2007, NEW SOUTH WALES</b>		. . . 45
Figure 4.1	Trend in the referral method for persons of interest proceeded against to court, January 2006 to December 2007, New South Wales	. . . 47
Table 4.1	Monthly number of persons of interest recorded by NSW Police by method of legal proceedings, 2005, New South Wales	. . . 48
Table 4.2	Monthly number of persons of interest recorded by NSW Police by method of legal proceedings, 2006, New South Wales	. . . 49
Table 4.3	Monthly number of persons of interest recorded by NSW Police by method of legal proceedings, 2007, New South Wales	. . . 50
<b>SECTION 5: CLEARED CRIMINAL INCIDENTS AND WHETHER LEGAL PROCEEDINGS COMMENCED FOR SELECTED OFFENCES, JANUARY 2005 TO SEPTEMBER 2007, NEW SOUTH WALES</b>		. . . 51
Table 5.1	Number of recorded criminal incidents for selected offences by clear up status and whether legal proceedings commenced, January to December 2005, New South Wales	. . . 52
Table 5.2	Number of recorded criminal incidents for selected offences by clear up status and whether legal proceedings commenced, January to December 2006, New South Wales	. . . 53
Table 5.3	Number of recorded criminal incidents for selected offences by clear up status and whether legal proceedings commenced, January to September 2007, New South Wales	. . . 54
Figure 5.1	Percentage of recorded criminal incidents for selected offences where legal proceedings commenced within 30 and 90 days, January 2007 to September 2007	. . . 55
<b>APPENDICES</b>		. . . 57
Appendix 1	NSW Police Force offence categories	. . . 58
Appendix 2	Maps	. . . 64
Appendix 3	Local Government Areas in Sydney Statistical Subdivisions and NSW regional Statistical Divisions	. . . 66

## DEFINITIONS AND EXPLANATORY NOTES

The data in this report are extracted from the NSW Police Computerised Operational Policing System (COPS). This system is used for record-keeping for all police operations, not just for criminal matters.

In this report:

- the counting units are recorded *criminal incidents* rather than recorded *offences* (except for murder and manslaughter, where the counting units are victims, and driving offences, where the counting units are legal actions commenced); and
- the data are categorised by date of *reporting* to police (or date of detection by police) rather than by date of *occurrence* of the offence.

### RECORDED CRIMINAL INCIDENTS

A criminal incident is defined as an activity detected by or reported to police which:

- involved the same offender(s);
- involved the same victim(s);
- occurred at the one location;
- occurred during one uninterrupted period of time;
- falls into one offence category;
- falls into one incident type (for example, 'actual', 'attempted', 'conspiracy').

One incident may involve two offenders assaulting the same victim. This would be recorded as one assault incident. Alternatively, suppose a man reports to police that he found his neighbour in the process of damaging his car and, when confronted, the neighbour assaulted him. For such an event, two criminal incidents are recorded because two distinct offence types are involved (malicious damage to property and assault) even though the same parties were involved at the same time and in the same place.

### RECORDED VICTIMS

For murder and manslaughter only, the counting units used are victims. Under the definition of a criminal incident (same parties, same time, same place, same offence and same incident type) one murder or manslaughter incident could involve two or more persons being killed. Because of the seriousness of these offences and their relatively small numbers, it is considered to be more appropriate to count the number of victims, rather than the number of criminal incidents. Hence, where one murder incident involves a person killing six people, six murder victims are counted.

### LEGAL ACTIONS COMMENCED

For driving offences, including driving causing death, the counting unit is the number of legal actions commenced by police rather than the number of incidents recorded. Legal actions include infringement notices, court referrals, formal cautions under the *Young Offenders Act 1997* and youth justice conference referrals. Incidents that do not result in a formal legal process are not counted. Legal actions have replaced recorded incidents for driving offences from 2003 onwards. This is because in July 2003, the NSW Police Force changed the way they classify traffic incidents on COPS and, as a result, the incidence of specific driving offences can no longer be determined directly from police incident categories.

### OFFENCE CATEGORIES

The classification of offences in this report is broadly based on the Australian Standard Offence Classification (ASOC) devised by the Australian Bureau of Statistics (ABS 1997 Cat. No. 1234.0).

## OFFENCE CATEGORIES *continued*

For all type of offence classifications used in the report, Appendix 1 lists the offence categories included in the classification. The original offence categories are those used by the NSW Police Force and do not necessarily correspond exactly with offences defined in legislation.

As mentioned above, the counting units for driving offences are the number of legal actions commenced rather than the number of recorded incidents. Driving offence data from 2003 onwards are not comparable with earlier statistics.

## MAJOR OFFENCE CATEGORIES

Major offence categories include the most serious personal violence and property offences. The most serious of these offences is *murder* for which the incident count is the number of victims. Assault includes the two offence types of *domestic violence related assault* and *non-domestic violence related assault*. Sexual offences are categorised into two major offences, either as *sexual assault* or *indecent assault, act of indecency and other sexual offences*. Robbery offences are sorted into three categories by use of weapon as; *robbery with a firearm*, *robbery with a weapon not a firearm* or *robbery without a weapon*. The serious theft offences in this group start with the burglary categories of *break and enter - dwelling* and *break and enter - non-dwelling* followed by *motor vehicle theft* and *steal from motor vehicle*. Other theft offences included in the 17 major offences are *steal from retail store* and *steal from dwelling, steal from person* and *fraud*. The final property offence listed as a major offence is *malicious damage to property*.

## COUNTING PERIOD

Criminal incidents are included in the counting period in which they were reported to or detected by police.

In most cases criminal incidents are recorded on COPS on the day of reporting. However there may be some time delay before the incident gains the status of accepted and verified (which are necessary conditions for inclusion in this report). It is therefore possible for some updating of data to occur. That is, data extracted for a specified period of time (incidents reported in 2007, for example), may differ according to the date of extraction of the data.

## PROCEEDINGS AGAINST ALLEGED OFFENDERS

Police may proceed against alleged offenders through a variety of legal or other processes. Most alleged offenders are referred to the NSW criminal courts. The more serious offences are dealt with by way of a Bail Court Attendance Notice (known as a Charge prior to July 2003) or a No-Bail Court Attendance Notice (known as a Court Attendance Notice (CAN) prior to July 2003). In these instances, the alleged offender is arrested, taken to a police station, fingerprinted and the details of the person and charge recorded. Alternatively a Field Court Attendance Notice may be issued by police at other locations. A Future Court Attendance Notice (previously called a Summons) is used for less serious offences. Due to time lag between the incident being recorded and the Future CAN being issued, data for the last three months are likely to be low and subject to future revision.

Some alleged offenders are proceeded against but diverted from the criminal court system. For many minor offences police can issue Infringement Notices. By paying the prescribed penalty the offender avoids having to go to court. Police also have the discretion to issue warnings to some offenders. Under the *Young Offenders Act 1997*, a juvenile offender can be issued with either a warning, a caution or referred to a youth justice conference. A youth justice conference is a face-to-face meeting between offenders, victims and their support persons. The offending behaviour is discussed and an outcome plan for the offender negotiated. Note that both the police and the courts can refer a young person to a youth justice conference. However, the number of alleged offenders proceeded against by way of a youth justice conference, as shown in Tables 4.1, 4.2 and 4.3, includes only police referrals to a youth justice conference.

## **PROCEEDINGS AGAINST ALLEGED OFFENDERS *continued***

Some alleged offenders are not proceeded against. The alleged offender may be deceased, be under the age of ten years, have diplomatic immunity or be mentally incapable of forming criminal intent. The victim or the Director of Public Prosecutions may decide not to prosecute. A small number of alleged offenders are temporarily not proceeded against while police await further advice, for example whether a juvenile should be referred to a youth justice conference.

## **CLEARED CRIMINAL INCIDENTS**

A cleared criminal incident is one, which, in the view of police, has been satisfactorily cleared by the commencement of legal proceedings or otherwise.

An incident is cleared by the commencement of legal proceedings when police have laid a charge or an information against at least one person. The information may have been laid with a view to the issuing of a warrant, summons or other process for the purpose of bringing an offender before the court.

A criminal incident is cleared other than by commencement of legal proceedings when, under normal circumstances, a charge or information would have been laid against at least one person, but, for a variety of reasons, police have been unable to make an arrest, despite knowing the identity of the offender and having sufficient evidence to support a charge. Examples of situations in which an offence may be cleared other than by charge include the following:

- the offender is a juvenile and is cautioned;
- the offender has died before a charge is made or information laid;
- the offender has been committed to a psychiatric institution and is unlikely to be released;
- there is an obstacle to charging, such as diplomatic immunity;
- the complainant or essential witness is dead and proceedings would be aborted;
- the offender is serving a sentence and police consider that no useful purpose would be served by prosecution.

## **REGIONAL STATISTICS**

Statistics are provided on the number of criminal incidents (victims for murder and legal actions for driving offences) recorded for each of the Statistical Divisions of NSW as defined by the Australian Bureau of Statistics (ABS). Within the Sydney Statistical Division, statistics are provided for Statistical Subdivisions. Recorded criminal incidents which occurred in correctional, detention or remand centres, however, are not counted in the Statistical Division in which the incident occurred. Appendix 2 provides maps indicating the location of each Statistical Division and Sydney Statistical Subdivision. Appendix 3 lists the Local Government Areas (LGAs using 2006 boundaries) within each of the Sydney Statistical Subdivisions and regional Statistical Divisions. Note that LGA boundaries change from time to time and that the current list differs from that stated in the 2004 NSW recorded crime report. A criminal incident is counted within a particular region when the location of the offence falls within that region.

For the rate calculations, population data were obtained from the Australian Bureau of Statistics publication: *Regional Population Growth, Australia and New Zealand, 2005-06*, Cat. No. 3218.0 (for 2005 and 2006 population estimates). As no population estimates were available for 2007 when this report was published, rates for 2007 were calculated using 2006 population estimates.

## ORGANISATION OF THE REPORT

The format of the 2007 report has changed considerably since the 2006 report and is organised into five main sections.

The first section is an overview of statistical trends in recorded criminal incidents (recorded victims for murder) over the two-year period from January 2006 to December 2007. A summary of NSW and LGA trend tests over the past five years as well as figures showing which major offences are producing the largest number of upward and downward trends across LGAs are presented.

The second section presents the monthly numbers of recorded criminal incidents, trends and offending rate comparisons for NSW regions and Local Government Areas. Recorded victims are reported for murder. Trend analyses use the full 24 months of 2006 and 2007 and incident totals are given for these years across the major crime categories.

In the third section of the report there are three tables which cover all types of criminal incidents for NSW, one each for 2005, 2006 and 2007. Each table gives the incident counts by month of reporting, for recorded criminal incidents (for murder, recorded victims and for driving offences, legal actions).

The fourth section provides monthly numbers of alleged offenders proceeded against, by the type of process pursued, for those criminal incidents recorded by the NSW Police Force in the reference year. There are three tables in this section, one each for 2005, 2006 and 2007. Each offender or alleged offender appears only once in the table for each event (there can be more than one criminal incident associated with a single event. The processes are arranged in a hierarchy with the offender or alleged offender appearing in the most serious category where multiple incidents are involved. For example if an event involves two incidents and the alleged offender is charged for one incident but receives a warning for the second incident, the alleged offender appears only in the 'Charged' category).

Note that in these tables, the year refers to the year in which the criminal incident or incidents were reported to police. For example, if an incident was reported to police in 2006 but the alleged offender was not apprehended and charged until 2007, the charge is recorded for 2006. This section also includes a figure showing trends over 24 months in methods of proceeding against offenders and alleged offenders which lead to attendance at court.

The fifth section provides the number and proportion of cleared criminal incidents, for selected types of offences, for 2005, 2006 and 2007. The offence types included in these tables are those where the crime is likely to have been reported to police, rather than discovered or detected by police. Offence types where the numbers of recorded criminal incidents are influenced by police law enforcement activity (drug offences, for example) are excluded. For such offence types, the clear-up percentages are very high because clearing the offence generally occurs simultaneously with its detection (that is, an arrest is made when the crime is discovered). This report contains criminal incidents cleared within 30 and 90 days after the incident was reported to the NSW Police Force.

For each of these reporting periods the table shows (1) the total number of recorded criminal incidents, (2) the total number of cleared incidents (i.e. both criminal incidents where proceedings were commenced and criminal incidents where proceedings were NOT commenced), (3) the number of criminal incidents where police commenced legal proceedings against at least one person and (4) the percentage of recorded criminal incidents where police commenced proceedings against at least one person. Because the data for this report were extracted in January 2008 and February 2008, the clear-up status after 90 days could not be determined for any offences reported in the last three months of 2007. Hence, the clear-up data for 2007 are for the first nine months of the year only.



---

**SECTION 1:**  
**OVERVIEW OF TRENDS**  
**IN RECORDED CRIME**  
**NEW SOUTH WALES**

---

## TRENDS IN RECORDED CRIME

Irrespective of how trends in recorded crime are presented, their interpretation is a difficult task. The recorded criminal incident data presented in this report are based on information derived from the NSW Police Computerised Operational Policing System (COPS), so only those incidents which are reported to, or detected by, police are included. The trends in recorded crime shown in this report will, therefore, reflect movements in the underlying factors which influence the detection, reporting and recording of crime, as well as changes in the true level of crime in the community.

An alternative measure of the level of crime in NSW is available from crime victim surveys, for example the *Crime and Safety Survey* which is conducted annually by the Australian Bureau of Statistics (ABS)<sup>1</sup>. As well as providing an estimate of the victimisation rate in the community for a selected set of offences, this survey measures the proportion of crimes which are not reported to police, and are therefore not recorded in the official statistics. In particular, personal crimes, such as assault and robbery, are less likely to be reported than crimes which involve households. For example, *Crime and Safety, NSW, Cat 4509.1, 2007* shows that in the twelve-month period to April 2007, while 73.5 per cent of break and enter offences in NSW (crimes against 'households') were reported to police, only 32.4 per cent of all alleged assault offences were reported<sup>1</sup>. Given that some offences have low reporting rates, it is possible that changes in recorded crime rates over time for these offences may be reflecting changes in reporting rates.

Public willingness to report crime, however, is just one of the extraneous factors which can affect trends in recorded crime. Shifts in policing policy can also have a marked effect on the number of recorded drug offences, drink driving offences, cases of offensive behaviour or of receiving stolen goods. For these offences, therefore, recorded rates probably do not accurately reflect actual rates. For this reason, the more detailed comparisons of crime rates and examination of trends in this document are restricted to offence categories which are reported to, rather than detected by police.

The interpretation of trends in official reports of crime can be considerably more difficult than the interpretation of trends in unemployment or inflation statistics. The ease with which recorded crime statistics can be misunderstood creates a temptation to offer an authoritative explanation for each major crime trend. Indeed, in many instances it is simply impossible to state with any assurance why a particular trend has appeared. This report, therefore, confines itself to identifying and describing trends in recorded crime, rather than explaining them.

The trends examined in this overview cover a twenty-four month period, from January 2006 to December 2007. For comparative purposes, statistics for 2005 have been included in sections three, four and five of the report. For some offence categories, separate trends have been presented for various offence subcategories; in particular, sexual offences, robbery, break and enter, and stealing offences have been further disaggregated.

For each offence category or subcategory (except murder), a statistical test<sup>2</sup> for trend was applied to the monthly numbers of recorded criminal incidents over the twenty-four month period from January 2006 to December 2007. In the case of murder, the statistical test for trend was applied to the monthly numbers of victims over the same period. For those offences where a statistically significant trend was found, the extent of the trend is indicated by the percentage change between the total recorded number of incidents for the twelve month period to December 2006 and the total recorded number of incidents for the same period in 2007.

## NOTES

1. Australian Bureau of Statistics 2007, *Crime and Safety, New South Wales, April 2007, Cat. No. 4509.1, ABS, Sydney.*

2. The trend test used was Kendall's rank-order correlation test (see, for example, Conover, W.J. 1980, *Practical Non-Parametric Statistics, 2nd ed, John Wiley and Sons, pp 256-260*). A two-tailed test was used to determine whether there had been an increasing or decreasing trend in the recorded numbers of criminal incidents over the most recent twenty-four month period covered in the report. Some month to month variations in the numbers of recorded incidents could be due in part to seasonal factors. The test for trend is not sensitive to seasonal variations; it is sensitive only to a generally increasing or generally increasing or generally decreasing trend over the time period examined.

**SUMMARY: TRENDS IN RECORDED CRIMINAL INCIDENTS, MAJOR OFFENCES,  
JANUARY 2006 TO DECEMBER 2007, NEW SOUTH WALES**

Kendall's rank-order correlation test for trend was applied to the monthly numbers of recorded incidents over the 24-month period to December 2007. In the following summary, for those offences where a statistically significant trend was found, the extent of the trend is indicated by percentage change in the total number of recorded criminal incidents between the consecutive twelve-month periods January to December 2006 and January to December 2007.

**Significant downward trends**

There was a statistically significant downward trend in the monthly numbers of recorded criminal incidents for the following offences:

- robbery with a weapon not a firearm (down by 7.0%)
- break and enter - non-dwelling (down by 10.4%)
- motor vehicle theft (down by 5.5%)

**Offences where there was no upward or downward trend**

There was no statistically significant upward or downward trend in the monthly numbers of recorded criminal incidents for the following offences:

- murder (number of victims, not incidents)
- assault - domestic violence related
- assault - non-domestic violence related
- sexual assault
- indecent assault, act of indecency and other sexual offences
- robbery without a weapon
- robbery with a firearm
- break and enter - dwelling
- steal from retail store
- steal from dwelling
- steal from person
- fraud
- malicious damage to property

**Significant upward trend**

There was a statistically significant upward trend in the monthly numbers of recorded criminal incidents for the following offence:

- steal from motor vehicle (up by 6.6%)

**TABLE 1.1: PERIODIC TRENDS<sup>^</sup> IN RECORDED CRIMINAL INCIDENTS FOR MAJOR OFFENCES, JANUARY 2002 TO DECEMBER 2007, NEW SOUTH WALES**

<i>Offence category</i>	<i>Trend</i>				
	<i>Jan 2002 - Dec 2003</i>	<i>Jan 2003 - Dec 2004</i>	<i>Jan 2004 - Dec 2005</i>	<i>Jan 2005 - Dec 2006</i>	<i>Jan 2006 - Dec 2007</i>
Murder*	Stable	Stable	Stable	Stable	<b>Stable</b>
Assault - domestic violence related	Stable	Stable	Stable	Stable	<b>Stable</b>
Assault - non-domestic violence related	Stable	Stable	Stable	Stable	<b>Stable</b>
Sexual assault	Stable	<b>8.1%</b>	Stable	Stable	<b>Stable</b>
Indecent assault, act of indecency and other sexual offences	Stable	Stable	Stable	Stable	<b>Stable</b>
Robbery without a weapon	-5.2%	-20.7%	Stable	Stable	<b>Stable</b>
Robbery with a firearm	Stable	Stable	-26.4%	Stable	<b>Stable</b>
Robbery with a weapon not a firearm	-14.8%	-12.2%	Stable	Stable	<b>-7.0%</b>
Break and enter - dwelling	-11.0%	-10.4%	-10.6%	-3.8%	<b>Stable</b>
Break and enter - non-dwelling	-12.4%	-18.0%	-7.3%	-1.8%	<b>-10.4%</b>
Motor vehicle theft	-17.1%	-4.8%	-12.2%	-2.5%	<b>-5.5%</b>
Steal from motor vehicle	-14.5%	-8.6%	-8.7%	Stable	<b>6.6%</b>
Steal from retail store	Stable	-16.3%	Stable	Stable	<b>Stable</b>
Steal from dwelling	Stable	-9.9%	Stable	Stable	<b>Stable</b>
Steal from person	-6.2%	-23.6%	-12.0%	Stable	<b>Stable</b>
Fraud	-12.3%	Stable	<b>5.1%</b>	Stable	<b>Stable</b>
Malicious damage to property	<b>1.1%</b>	Stable	<b>8.8%</b>	<b>5.5%</b>	<b>Stable</b>

<sup>^</sup> This table shows the results of a statistical test for significant upward or downward trends in the number of recorded criminal incidents over a 24-month period. The trend test used is Kendall's rank-order correlation test. Where the trend is significant ( $p < 0.05$ ), the percentage change between the last 12-month period and the preceding 12-month period is shown. Significant upward trends are highlighted in red print. A non-significant test result is denoted by 'stable'.

\* For murder, the trend test is applied to the monthly number of recorded victims rather than criminal incidents.

**TABLE 1.2: NUMBER AND TRENDS IN RECORDED CRIMINAL INCIDENTS FOR ALL OFFENCES, JANUARY 2006 TO DECEMBER 2007, NEW SOUTH WALES**

Offence Category		Number of recorded criminal incidents		Trend <sup>A</sup> over 24 month period	
		Jan 2006 - Dec 2006	Jan 2007 - Dec 2007		
Homicide	Murder*	97	82	Stable	
	Attempted murder	65	52	Stable	
	Murder accessory, conspiracy	8	4	.	
	Manslaughter *	5	8	.	
Assault	Domestic violence related	26,991	27,402	Stable	
	Non-domestic violence related	45,499	45,841	Stable	
Sexual offences	Sexual assault	4,028	4,081	Stable	
	Indecent assault, act of indecency and other sexual offences	5,400	5,085	Stable	
Abduction and kidnapping		402	371	Stable	
Robbery	Robbery without a weapon	4,941	4,857	Stable	
	Robbery with a firearm	562	548	Stable	
	Robbery with a weapon not a firearm	2,509	2,334	Down	7.0%
Blackmail and extortion		72	60	Stable	
Harassment, threatening behaviour and private nuisance		23,043	24,778	Up	7.5%
Other offences against the person		1,692	1,679	Stable	
Theft	Break and enter - dwelling	48,038	47,498	Stable	
	Break and enter - non-dwelling	27,153	24,330	Down	10.4%
	Receiving or handling stolen goods	6,016	5,821	Down	3.2%
	Motor vehicle theft	28,441	26,875	Down	5.5%
	Steal from motor vehicle	58,245	62,089	Up	6.6%
	Steal from retail store	18,110	18,282	Stable	
	Steal from dwelling	24,313	22,940	Stable	
	Steal from person	11,963	11,902	Stable	
	Stock theft	596	583	Stable	
	Fraud	34,725	32,704	Stable	
Other theft	42,486	40,155	Down	5.5%	
Arson		7,783	7,059	Stable	
Malicious damage to property		109,155	107,343	Stable	
Drug offences	Possession and/or use of cocaine	317	302	Stable	
	Possession and/or use of narcotics	599	783	Up	30.7%
	Possession and/or use of cannabis	12,110	12,252	Stable	
	Possession and/or use of amphetamines	2,371	2,673	Stable	
	Possession and/or use of ecstasy	903	1,060	Stable	
	Possession and/or use of other drugs	1,140	1,304	Up	14.4%
	Dealing, trafficking in cocaine	146	100	Stable	
	Dealing, trafficking in narcotics	296	178	Stable	
	Dealing, trafficking in cannabis	518	441	Stable	
	Dealing, trafficking in amphetamines	760	764	Stable	
	Dealing, trafficking in ecstasy	405	319	Stable	
	Dealing, trafficking in other drugs	83	77	Stable	
	Cultivating cannabis	1,034	1,082	Stable	
	Manufacture drug	49	45	Stable	
Importing drugs	26	18	.		
Other drug offences	2,787	2,873	Stable		
Prohibited and regulated weapons offences		8,107	8,283	Stable	
Disorderly conduct	Trespass	8,612	9,242	Stable	
	Offensive conduct	5,933	7,025	Up	18.4%
	Offensive language	5,463	5,728	Stable	
	Criminal intent	1,542	1,544	Stable	
Betting and gaming offences		393	321	Stable	
Liquor offences		15,329	17,866	Up	16.6%
Pornography offences		106	156	Up	47.2%
Prostitution offences		186	208	Stable	
Against justice procedures	Escape custody	261	221	Stable	
	Breach Apprehended Violence Order	11,553	11,839	Stable	
	Breach bail conditions	15,121	18,638	Up	23.3%
	Fail to appear	597	720	Up	20.6%
	Resist or hinder officer	6,745	7,359	Stable	
	Other offences against justice procedures	669	642	Stable	
Transport regulatory offences		34,576	36,480	Stable	
Other offences		16,498	15,483	Stable	

<sup>A</sup> This table shows the results of a statistical test for significant upward (highlighted in red) or downward (highlighted in yellow) trends in the number of recorded criminal incidents over a 24-month period. The trend test used is Kendall's rank-order correlation test. Where the trend is significant ( $p < 0.05$ ), the percentage change between the last 12-month period and the preceding 12-month period is shown. A trend test was not performed if there were fewer than 20 incidents in either of the two years for the period in question; the result '.' indicates that a trend test was not performed. A non-significant test result is denoted by 'Stable'.

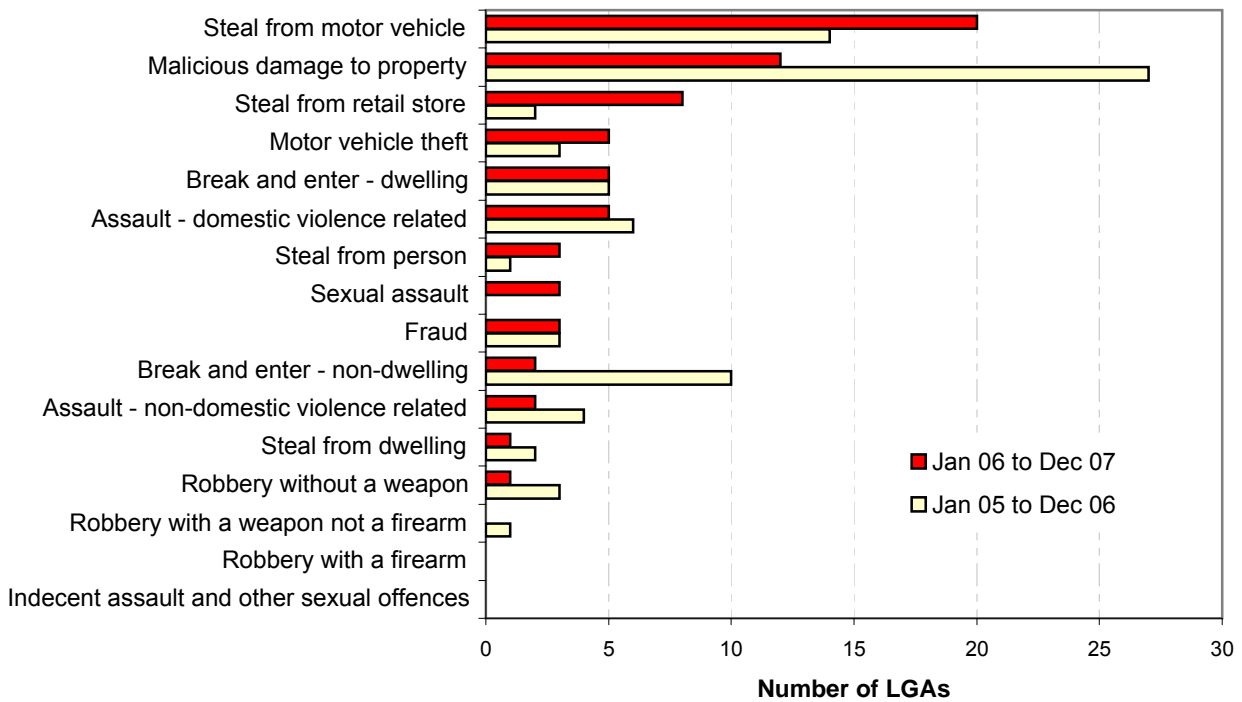
\* For murder and manslaughter incidents, the trend test is applied to the monthly number of recorded victims rather than criminal incidents.

**TABLE 1.3: NUMBER AND OUTCOME<sup>^</sup> OF 24-MONTH TREND TESTS FOR MAJOR OFFENCES IN NSW LOCAL GOVERNMENT AREAS**

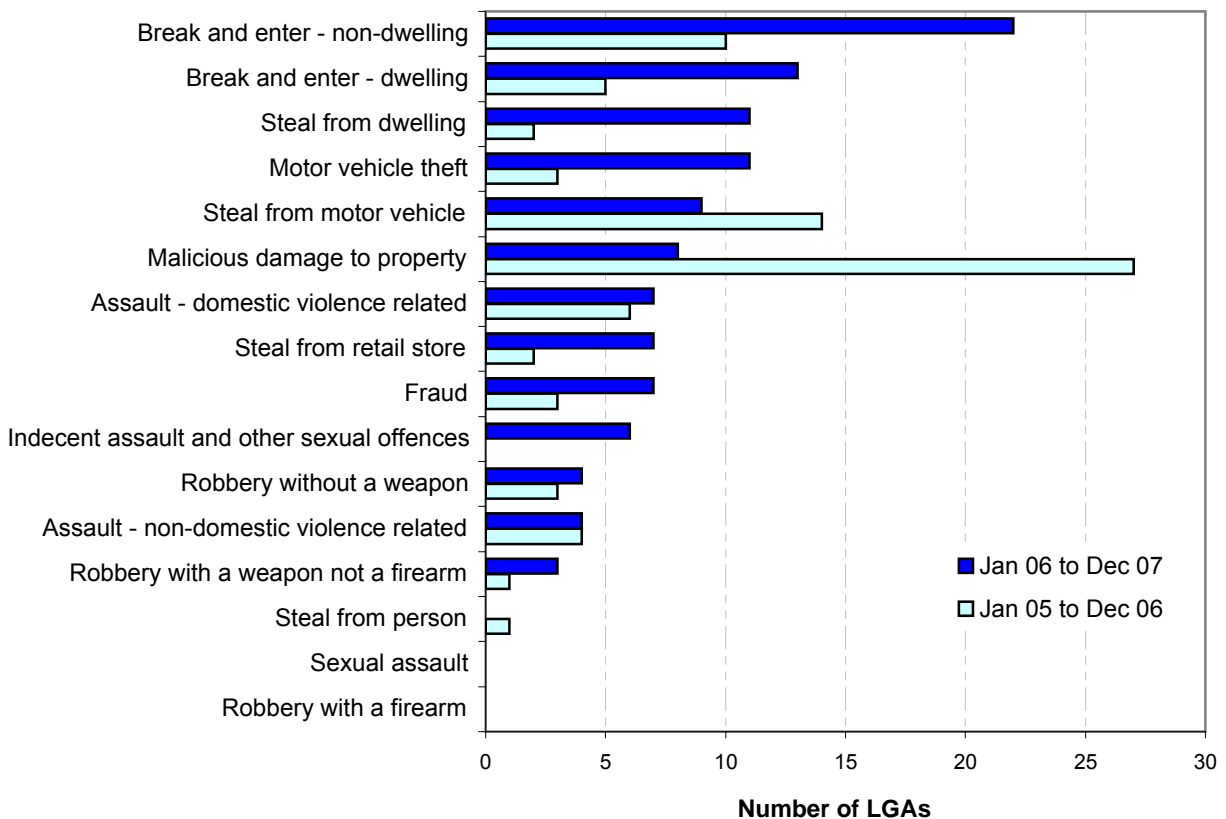
	<i>Final month for 24 month trend test</i>	<i>Number of LGAs</i>	<i>Number of trend tests</i>	<i>Stable trends (%)</i>	<i>Downward trends (%)</i>	<i>Upward trends (%)</i>
<b>2004</b>	March	174	1,428	80.5	15.6	3.9
	June	174	1,421	80.1	18.2	1.7
	September	174	1,415	76.7	21.6	1.8
	<b>December</b>	<b>173</b>	<b>1,397</b>	<b>78.5</b>	<b>18.2</b>	<b>3.4</b>
<b>2005</b>	March	167	1,371	79.2	17.0	3.8
	June	167	1,358	80.6	15.4	4.1
	September	167	1,364	79.8	15.8	4.4
	<b>December</b>	<b>167</b>	<b>1,357</b>	<b>83.3</b>	<b>11.9</b>	<b>4.9</b>
<b>2006</b>	March	167	1,464	85.9	7.4	6.7
	June	154	1,432	87.7	7.8	4.5
	September	154	1,440	86.2	9.6	4.2
	<b>December</b>	<b>154</b>	<b>1,442</b>	<b>86.6</b>	<b>7.8</b>	<b>5.6</b>
<b>2007</b>	March	154	1,450	86.0	6.8	7.2
	June	154	1,447	88.3	6.8	5.0
	September	154	1,440	84.9	10.4	4.7
	<b>December</b>	<b>154</b>	<b>1,446</b>	<b>87.3</b>	<b>7.8</b>	<b>4.9</b>

<sup>^</sup> This table summarises the aggregate outcomes of statistical tests for significant upward or downward trends in the number of recorded criminal incidents over a 24-month period across all NSW LGAs for the 15 categories in 2004-05 and the 16 in 2006-07 major offences. The trend test used is Kendall's rank-order correlation test. A trend test was not performed if there were fewer than 20 incidents in either of the two years for the period in question, hence no trend tests for murder were calculated.

**FIGURE 1.3A: NUMBER OF LOCAL GOVERNMENT AREAS WITH SIGNIFICANT UPWARD TRENDS FOR MAJOR OFFENCES, JANUARY 2005 TO DECEMBER 2007**



**FIGURE 1.3B: NUMBER OF LOCAL GOVERNMENT AREAS WITH SIGNIFICANT DOWNWARD TRENDS FOR MAJOR OFFENCES, JANUARY 2005 TO DECEMBER 2007**





---

**SECTION 2:**

**TRENDS, RATE COMPARISONS AND  
RECORDED CRIMINAL INCIDENTS  
FOR MAJOR OFFENCES  
NSW REGIONS AND LGAS  
2005, 2006 AND 2007**

---

**TABLE 2.1A : TRENDS IN RECORDED CRIMINAL INCIDENTS FOR MAJOR OFFENCES, JANUARY 2006 TO DECEMBER 2007, NSW STATISTICAL DIVISIONS**

Statistical Division	Murder*	Assault - domestic violence related	Assault - non-domestic violence related	Sexual assault	Indecent assault, act of indecency and other sexual offences	Robbery without a weapon	Robbery with a firearm	Robbery with a weapon not a firearm	Break and enter - dwelling	Break and enter - non-dwelling	Motor vehicle theft	Steal from motor vehicle	Steal from retail store	Steal from dwelling	Steal from person	Fraud	Malicious damage to property
Sydney	ns	ns	ns	ns	ns	-1.6	ns	ns	ns	-15.5	-6.2	10.9	ns	ns	ns	ns	ns
Hunter	ns	ns	ns	ns	ns	ns	ns	ns	ns	ns	ns	ns	ns	ns	ns	ns	ns
Illawarra	ns	ns	ns	ns	-22.0	ns	ns	ns	-20.5	-12.9	-18.6	ns	ns	ns	ns	ns	ns
Richmond-Tweed	ns	ns	ns	ns	ns	ns	ns	ns	ns	-15.4	ns	ns	ns	ns	ns	ns	ns
Mid-North Coast	ns	ns	ns	ns	ns	ns	ns	ns	ns	ns	ns	ns	ns	ns	ns	ns	ns
Northern	ns	ns	ns	ns	-19.2	ns	ns	ns	ns	ns	ns	ns	ns	ns	ns	ns	ns
North Western	ns	ns	ns	ns	ns	ns	ns	ns	ns	-20.8	-28.5	ns	ns	ns	ns	ns	-11.1
Central West	ns	ns	ns	ns	ns	59.4	ns	ns	ns	ns	ns	ns	ns	ns	ns	ns	ns
South Eastern	ns	ns	ns	ns	ns	ns	ns	ns	ns	ns	14.1	ns	ns	ns	ns	ns	ns
Murrumbidgee	ns	ns	ns	ns	ns	ns	ns	ns	ns	ns	ns	-14.8	ns	ns	ns	ns	ns
Murray	ns	ns	ns	ns	ns	ns	ns	ns	ns	ns	ns	ns	ns	ns	ns	ns	ns
Far West	ns	ns	ns	ns	ns	ns	ns	ns	ns	ns	ns	ns	-35.0	ns	ns	ns	ns
<b>NSW</b>	<b>ns</b>	<b>ns</b>	<b>ns</b>	<b>ns</b>	<b>ns</b>	<b>ns</b>	<b>ns</b>	<b>-7.0</b>	<b>ns</b>	<b>-10.4</b>	<b>-5.5</b>	<b>6.6</b>	<b>ns</b>	<b>ns</b>	<b>ns</b>	<b>ns</b>	<b>ns</b>

^ This table shows the results of a statistical test for significant upward (highlighted in red) or downward (highlighted in yellow) trends in the number of recorded criminal incidents over a 24-month period. The trend test used is Kendall's rank-order correlation test. Where the trend is significant ( $p < 0.05$ ), the percentage change between the last 12-month period and the preceding 12-month period is shown. A trend test was not performed if there were fewer than 20 incidents in either of the two years for the period in question; the result 'ns' indicates that a trend test was not performed. A non-significant test result is denoted by 'ns'.

**TABLE 2.1B: RATIO^ OF THE RATE\* OF RECORDED CRIMINAL INCIDENTS PER 100,000 POPULATION COMPARED WITH NSW FOR MAJOR OFFENCES, 2007, NSW STATISTICAL DIVISIONS**

Statistical Division	Murder*	Assault - domestic violence related	Assault - non-domestic violence related	Sexual assault	Indecent assault, act of indecency and other sexual offences	Robbery without a weapon	Robbery with a firearm	Robbery with a weapon not a firearm	Break and enter - dwelling	Break and enter - non-dwelling	Motor vehicle theft	Steal from motor vehicle	Steal from retail store	Steal from dwelling	Steal from person	Fraud	Malicious damage to property
Sydney	1.0	0.9	0.9	0.7	0.8	1.3	1.4	1.4	1.0	0.7	1.1	1.1	1.1	0.8	1.3	1.2	0.9
Hunter	2.0	1.1	1.0	1.2	1.1	0.6	0.4	0.6	1.1	1.6	1.2	1.0	0.9	1.4	0.5	0.7	1.2
Illawarra	0.8	1.0	1.0	1.0	0.8	0.6	0.5	0.5	0.8	1.1	0.8	0.8	0.9	1.1	0.5	0.7	1.1
Richmond-Tweed	0.4	1.2	1.3	1.4	1.3	0.4	0.3	0.3	0.9	1.3	0.8	0.8	1.0	1.5	0.6	0.8	1.0
Mid-North Coast	0.8	1.1	1.1	1.6	1.3	0.3	0.4	0.2	1.0	1.7	0.8	0.7	0.8	1.5	0.4	0.6	1.1
Northern	1.4	1.5	1.5	2.1	1.4	0.4	0.1	0.2	1.3	1.7	0.5	0.8	1.0	1.5	0.3	0.5	1.4
North Western	2.1	2.4	1.9	2.2	2.5	0.5	0.1	0.4	1.5	1.6	0.9	0.8	1.1	1.9	0.4	0.7	1.7
Central West	0.0	1.3	1.1	1.7	1.3	0.4	0.1	0.3	1.1	1.3	0.7	0.8	0.7	1.5	0.3	0.5	1.4
South Eastern	0.0	0.9	1.0	1.1	1.1	0.2	0.2	0.2	0.8	1.3	0.6	0.6	0.5	1.2	0.3	0.6	1.1
Murrumbidgee	1.1	1.2	1.2	1.7	1.7	0.2	0.2	0.3	1.0	1.3	0.6	0.7	1.0	1.5	0.4	0.6	1.3
Murray	1.4	1.2	1.1	1.4	1.6	0.3	0.1	0.2	1.1	1.7	0.9	0.8	0.7	1.5	0.4	0.7	1.2
Far West	0.0	2.9	1.6	2.1	1.5	0.2	0.0	0.0	2.1	2.0	0.9	0.8	0.4	2.0	0.3	0.5	1.8
<b>NSW</b>	<b>1.0</b>	<b>1.0</b>	<b>1.0</b>	<b>1.0</b>	<b>1.0</b>	<b>1.0</b>	<b>1.0</b>	<b>1.0</b>	<b>1.0</b>	<b>1.0</b>	<b>1.0</b>	<b>1.0</b>	<b>1.0</b>	<b>1.0</b>	<b>1.0</b>	<b>1.0</b>	<b>1.0</b>

^ Ratios are a comparison of NSW SD rates per 100,000 population to the NSW rate per 100,000 population. A ratio of one indicates parity with the state rate. Ratios indicating double the NSW rate (or more) are highlighted in red, whilst ratios indicating half the state rate (or less) are highlighted in yellow.

\* For the rate calculations, population data were obtained from the Australian Bureau of Statistics publication: Regional Population Growth Australia 2005-06 Cat. No. 3218 (for 2005 and 2006 population estimates). As no population estimates were available for 2007 when this report was published, rates for 2007 were calculated using 2006 population estimates.

**TABLE 2.1C: NUMBER OF RECORDED CRIMINAL INCIDENTS FOR MAJOR OFFENCES, 2007,  
NSW STATISTICAL DIVISIONS**

<i>Statistical Division 2007</i>	Murder*	Assault - domestic violence related	Assault - non-domestic violence related	Sexual assault	Indecent assault, act of indecency and other sexual offences	Robbery without a weapon	Robbery with a firearm	Robbery with a weapon not a firearm	Break and enter - dwelling	Break and enter - non-dwelling	Motor vehicle theft	Steal from motor vehicle	Steal from retail store	Steal from dwelling	Steal from person	Fraud	Malicious damage to property
Sydney	49	15,020	25,681	1,907	2,676	4,094	487	2,019	29,329	11,249	18,538	43,448	12,452	11,069	9,949	24,955	59,305
Hunter	15	2,812	4,233	437	509	241	21	122	4,713	3,446	2,825	5,533	1,474	2,817	555	2,059	11,228
Illawarra	4	1,636	2,809	254	234	169	15	69	2,375	1,607	1,358	2,889	1,013	1,473	366	1,301	7,461
Richmond-Tweed	1	1,053	1,953	195	224	65	5	24	1,444	1,041	722	1,583	604	1,128	251	848	3,492
Mid-North Coast	3	1,345	2,190	278	294	71	9	20	1,997	1,789	885	2,000	662	1,498	194	788	5,221
Northern	3	1,108	1,813	227	194	48	2	10	1,580	1,111	346	1,248	471	922	104	445	4,022
North Western	3	1,164	1,489	158	221	39	1	18	1,262	695	417	884	341	763	78	414	3,170
Central West	0	917	1,352	180	181	51	1	16	1,346	870	472	1,298	336	912	106	435	3,958
South Eastern	0	756	1,346	139	165	27	4	14	1,113	949	476	1,205	282	830	97	576	3,424
Murrumbidgee	2	760	1,238	155	198	27	2	14	1,117	705	354	1,016	403	766	115	433	3,175
Murray	2	548	825	98	140	21	1	7	884	700	396	802	218	602	73	389	2,133
Far West	0	270	248	29	27	3	0	0	338	168	83	181	26	160	14	54	672
<b>NSW</b>	<b>82</b>	<b>27,402</b>	<b>45,841</b>	<b>4,081</b>	<b>5,085</b>	<b>4,857</b>	<b>548</b>	<b>2,334</b>	<b>47,498</b>	<b>24,330</b>	<b>26,875</b>	<b>62,089</b>	<b>18,282</b>	<b>22,940</b>	<b>11,902</b>	<b>32,704</b>	<b>107,343</b>

**TABLE 2.1D: NUMBER OF RECORDED CRIMINAL INCIDENTS FOR MAJOR OFFENCES, 2006,  
NSW STATISTICAL DIVISIONS**

<i>Statistical Division 2006</i>	Murder*	Assault - domestic violence related	Assault - non-domestic violence related	Sexual assault	Indecent assault, act of indecency and other sexual offences	Robbery without a weapon	Robbery with a firearm	Robbery with a weapon not a firearm	Break and enter - dwelling	Break and enter - non-dwelling	Motor vehicle theft	Steal from motor vehicle	Steal from retail store	Steal from dwelling	Steal from person	Fraud	Malicious damage to property
Sydney	62	14,484	25,139	1,941	2,750	4,162	507	2,140	29,874	13,310	19,763	39,169	12,398	11,571	9,961	26,575	59,705
Hunter	7	2,835	4,236	406	517	218	19	126	4,568	3,744	2,926	5,829	1,345	3,158	583	2,284	11,619
Illawarra	8	1,683	2,807	283	300	172	10	95	2,988	1,845	1,668	2,945	993	1,523	412	1,459	7,554
Richmond-Tweed	3	1,118	1,863	188	221	68	13	23	1,411	1,230	676	1,591	638	1,268	258	709	3,576
Mid-North Coast	5	1,347	2,076	239	331	93	6	37	1,879	1,765	829	1,863	725	1,645	185	785	5,381
Northern	3	1,119	1,715	193	240	59	0	9	1,420	1,012	382	1,118	434	896	92	469	4,068
North Western	1	1,204	1,558	170	234	39	2	14	1,182	878	583	1,125	304	745	92	463	3,566
Central West	2	849	1,478	143	225	32	2	28	1,373	927	427	1,124	340	938	124	446	3,994
South Eastern	1	723	1,477	173	224	40	2	14	1,034	826	417	1,088	370	902	77	600	3,620
Murrumbidgee	3	710	1,197	131	183	38	1	14	1,229	814	364	1,192	343	843	99	404	3,201
Murray	1	567	907	97	124	17	0	6	828	676	333	1,019	180	644	67	470	2,119
Far West	0	299	324	41	27	3	0	3	252	124	72	174	40	180	13	57	635
<b>NSW</b>	<b>97</b>	<b>26,991</b>	<b>45,499</b>	<b>4,028</b>	<b>5,400</b>	<b>4,941</b>	<b>562</b>	<b>2,509</b>	<b>48,038</b>	<b>27,153</b>	<b>28,441</b>	<b>58,245</b>	<b>18,110</b>	<b>24,313</b>	<b>11,963</b>	<b>34,725</b>	<b>109,155</b>

\* Number of victims.

**TABLE 2.2A: TRENDS IN RECORDED CRIMINAL INCIDENTS FOR MAJOR OFFENCES, JANUARY 2006 TO DECEMBER 2007, NSW METROPOLITAN STATISTICAL SUBDIVISIONS**

Metropolitan Statistical Subdivision	Murder*	Assault - domestic violence related	Assault - non-domestic violence related	Sexual assault	Indecent assault, act of indecency and other sexual offences	Robbery without a weapon	Robbery with a firearm	Robbery with a weapon not a firearm	Break and enter - dwelling	Break and enter - non-dwelling	Motor vehicle theft	Steal from motor vehicle	Steal from retail store	Steal from dwelling	Steal from person	Fraud	Malicious damage to property
Inner Sydney	.	ns	ns	ns	ns	ns	ns	ns	ns	-12.7	ns	15.7	ns	ns	-3.0	ns	ns
Eastern Suburbs	.	20.6	ns	ns	ns	ns	ns	ns	7.0	ns	ns	-8.1	ns	ns	ns	ns	ns
St George-Sutherland	.	ns	4.4	ns	ns	ns	ns	ns	-22.0	ns	19.1	ns	ns	ns	ns	ns	ns
Canterbury-Bankstown	.	ns	ns	ns	-24.8	-27.7	ns	-8.8	ns	-23.6	-13.8	ns	-22.8	ns	ns	ns	ns
Fairfield-Liverpool	.	ns	ns	ns	ns	-19.4	ns	ns	ns	-11.7	-9.7	10.6	ns	ns	ns	ns	ns
Outer South Western Sydney	.	ns	ns	ns	ns	ns	ns	ns	ns	ns	-20.9	ns	ns	ns	ns	ns	ns
Inner Western Sydney	.	ns	ns	ns	ns	ns	ns	ns	ns	ns	ns	56.5	ns	ns	ns	ns	ns
Central Western Sydney	.	ns	ns	ns	ns	ns	ns	-12.5	ns	-12.6	-8.7	17.2	ns	ns	ns	ns	4.0
Outer Western Sydney	.	ns	ns	ns	ns	ns	ns	ns	-14.2	-11.2	-7.9	-15.3	ns	ns	ns	ns	ns
Blacktown	.	ns	ns	ns	ns	ns	ns	ns	ns	-14.4	ns	ns	ns	ns	ns	ns	ns
Lower Northern Sydney	.	ns	ns	ns	ns	ns	ns	ns	ns	ns	ns	39.2	14.5	-9.0	ns	ns	ns
Central Northern Sydney	.	ns	ns	ns	ns	ns	ns	ns	ns	-24.5	-11.2	17.8	ns	ns	ns	ns	ns
Northern Beaches	.	ns	ns	ns	ns	ns	ns	ns	-27.0	ns	ns	ns	ns	ns	ns	ns	ns
Gosford-Wyong	.	ns	ns	ns	-29.4	ns	ns	ns	-11.1	-31.3	ns	ns	ns	-20.0	ns	-27.8	ns
Newcastle	.	ns	ns	ns	ns	ns	ns	ns	ns	ns	ns	ns	ns	ns	ns	ns	ns
Wollongong	.	ns	ns	ns	-25.5	ns	ns	ns	-25.8	-22.5	-24.2	ns	ns	ns	ns	ns	ns

^ This table shows the results of a statistical test for significant upward (highlighted in red) or downward (highlighted in yellow) trends in the number of recorded criminal incidents over a 24-month period. The trend test used is Kendall's rank-order correlation test. Where the trend is significant ( $p < 0.05$ ), the percentage change between the last 12-month period and the preceding 12-month period is shown. A trend test was not performed if there were fewer than 20 incidents in either of the two years for the period in question; the result '.' indicates that a trend test was not performed. A non-significant test result is denoted by 'ns'.

**TABLE 2.2B : RATIO OF THE RATE OF RECORDED CRIMINAL INCIDENTS PER 100,000 POPULATION COMPARED WITH NSW FOR MAJOR OFFENCES, 2007, NSW METROPOLITAN STATISTICAL SUBDIVISIONS**

Metropolitan Statistical Subdivision	Murder*	Assault - domestic violence related	Assault - non-domestic violence related	Sexual assault	Indecent assault, act of indecency and other sexual offences	Robbery without a weapon	Robbery with a firearm	Robbery with a weapon not a firearm	Break and enter - dwelling	Break and enter - non-dwelling	Motor vehicle theft	Steal from motor vehicle	Steal from retail store	Steal from dwelling	Steal from person	Fraud	Malicious damage to property
Inner Sydney	1.6	1.2	2.7	1.3	1.8	5.5	4.2	5.2	1.6	1.8	2.0	3.8	2.6	1.5	8.6	3.2	1.4
Eastern Suburbs	0.7	0.7	0.9	0.6	0.9	1.5	1.2	1.3	1.2	0.6	1.4	1.0	1.4	1.0	1.6	1.4	0.8
St George-Sutherland	0.8	0.6	0.6	0.5	0.7	1.0	1.1	1.1	0.7	0.4	0.8	0.7	0.7	0.5	0.5	0.9	0.8
Canterbury-Bankstown	1.3	0.8	0.6	0.5	0.5	1.3	2.6	2.1	0.9	0.5	1.6	0.8	0.7	0.5	0.6	1.5	0.6
Fairfield-Liverpool	1.8	1.0	0.7	0.8	0.6	1.0	1.9	1.5	1.1	0.6	1.2	1.0	1.0	0.5	0.6	1.2	0.7
Outer South Western Sydney	1.4	1.4	1.2	1.1	1.1	1.1	1.2	0.8	1.1	0.8	1.1	0.8	1.0	1.0	0.6	0.7	1.2
Inner Western Sydney	0.0	0.5	0.5	0.5	0.6	1.7	2.4	1.8	1.3	0.5	1.3	1.5	1.1	0.9	1.4	1.4	0.6
Central Western Sydney	0.8	1.1	1.0	1.0	0.8	2.1	2.4	2.1	1.3	0.9	1.6	1.3	1.4	0.6	1.5	1.6	0.8
Outer Western Sydney	0.8	1.2	1.0	1.0	1.0	0.9	0.4	0.8	0.8	0.8	1.0	0.7	1.0	1.0	0.6	0.8	1.2
Blacktown	1.2	1.5	1.1	1.1	1.1	1.5	0.8	1.1	1.3	0.6	1.5	1.1	1.2	1.0	0.8	1.6	1.1
Lower Northern Sydney	0.6	0.4	0.4	0.3	0.7	0.5	0.9	0.5	0.9	0.7	0.6	1.0	1.1	0.5	0.8	1.0	0.6
Central Northern Sydney	0.6	0.4	0.3	0.4	0.5	0.4	0.4	0.4	0.6	0.5	0.4	0.7	0.5	0.5	0.3	0.6	0.5
Northern Beaches	0.3	0.4	0.5	0.6	0.7	0.3	0.4	0.3	0.6	0.7	0.4	0.6	0.7	0.7	0.6	0.8	0.7
Gosford-Wyong	1.1	1.1	1.0	1.1	0.9	0.4	0.2	0.3	0.8	0.9	0.9	0.8	1.1	1.0	0.5	0.6	1.2
Newcastle	2.1	1.2	1.1	1.2	1.2	0.6	0.5	0.7	1.1	1.6	1.3	1.1	1.0	1.4	0.6	0.7	1.2
Wollongong	1.2	0.9	1.0	1.0	0.7	0.7	0.5	0.6	0.8	1.0	0.9	0.8	1.1	1.0	0.6	0.8	1.1

^ Ratios are a comparison of SD rates per 100,000 population to the NSW rate per 100,000 population. A ratio of one indicates parity with the state rate. Ratios indicating double the NSW rate (or more) are highlighted in red, whilst ratios indicating half the state rate (or less) are highlighted in yellow.

\* For the rate calculations, population data were obtained from the Australian Bureau of Statistics publication: Regional Population Growth Australia 2005-06, Cat. No. 3218.0 (for 2005 and 2006 population estimates). As no population estimates were available for 2007 when this report was published, rates for 2007 were calculated using 2006 population estimates.

**TABLE 2.2C : NUMBER OF RECORDED CRIMINAL INCIDENTS FOR MAJOR OFFENCES, 2007  
NSW METROPOLITAN STATISTICAL SUBDIVISIONS**

<i>Metropolitan Statistical Subdivision 2007</i>	Murder*	Assault - domestic violence related	Assault - non-domestic violence related	Sexual assault	Indecent assault, act of indecency and other sexual offences	Robbery without a weapon	Robbery with a firearm	Robbery with a weapon not a firearm	Break and enter - dwelling	Break and enter - non-dwelling	Motor vehicle theft	Steal from motor vehicle	Steal from retail store	Steal from dwelling	Steal from person	Fraud	Malicious damage to property
Inner Sydney	6	1,480	5,659	251	430	1,237	106	564	3,602	2,068	2,526	10,943	2,181	1,624	4,785	4,901	7,090
Eastern Suburbs	2	673	1,504	81	167	257	24	107	2,051	500	1,341	2,238	923	812	681	1,688	3,155
St George-Sutherland	4	1,139	1,665	124	220	307	39	171	2,088	667	1,411	2,888	818	689	372	1,816	5,383
Canterbury-Bankstown	5	1,008	1,375	95	109	285	67	227	1,880	594	1,993	2,399	553	482	315	2,231	3,192
Fairfield-Liverpool	8	1,473	1,809	180	169	262	56	179	2,655	825	1,745	3,245	995	652	408	2,117	4,177
Outer South Western Sydney	4	1,371	1,913	154	201	190	23	69	1,792	699	1,034	1,779	664	806	243	855	4,704
Inner Western Sydney	0	343	620	47	74	215	33	106	1,543	332	877	2,327	496	503	423	1,147	1,638
Central Western Sydney	3	1,401	2,100	183	189	463	61	230	2,801	965	1,994	3,783	1,210	689	815	2,391	3,999
Outer Western Sydney	3	1,471	2,160	196	246	208	11	87	1,839	935	1,205	2,066	823	1,035	326	1,289	5,780
Blacktown	4	1,783	2,193	182	230	315	19	107	2,548	620	1,645	2,824	926	935	379	2,236	5,047
Lower Northern Sydney	2	460	873	48	167	103	23	54	1,865	769	728	2,821	874	546	409	1,400	3,051
Central Northern Sydney	3	641	895	90	146	108	14	59	1,917	723	619	2,655	626	682	260	1,144	3,468
Northern Beaches	1	366	761	80	119	53	7	26	932	611	390	1,275	436	563	244	898	2,762
Gosford-Wyong	4	1,411	2,154	196	209	91	4	33	1,816	941	1,030	2,205	927	1,051	289	842	5,859
Newcastle	13	2,383	3,722	374	439	219	19	115	3,987	2,972	2,575	5,029	1,315	2,400	507	1,814	9,573
Wollongong	4	1,006	1,855	165	137	132	12	60	1,551	969	936	2,084	817	946	303	1,031	4,744

**TABLE 2.2D : NUMBER OF RECORDED CRIMINAL INCIDENTS FOR MAJOR OFFENCES, 2006  
NSW METROPOLITAN STATISTICAL SUBDIVISIONS**

<i>Metropolitan Statistical Subdivision 2006</i>	Murder*	Assault - domestic violence related	Assault - non-domestic violence related	Sexual assault	Indecent assault, act of indecency and other sexual offences	Robbery without a weapon	Robbery with a firearm	Robbery with a weapon not a firearm	Break and enter - dwelling	Break and enter - non-dwelling	Motor vehicle theft	Steal from motor vehicle	Steal from retail store	Steal from dwelling	Steal from person	Fraud	Malicious damage to property
Inner Sydney	6	1,526	5,515	242	374	1,271	109	592	3,146	2,370	2,522	9,455	1,995	1,694	4,932	5,182	7,018
Eastern Suburbs	7	558	1,529	75	180	244	25	127	1,917	594	1,223	2,113	1,004	843	779	1,588	3,584
St George-Sutherland	5	1,073	1,595	128	223	246	45	117	2,220	855	1,417	2,425	885	708	405	1,802	5,402
Canterbury-Bankstown	6	938	1,278	117	145	394	71	249	2,061	777	2,313	2,584	716	541	287	2,179	3,284
Fairfield-Liverpool	9	1,366	1,794	181	198	325	72	192	2,699	934	1,932	2,934	1,121	630	430	2,284	4,421
Outer South Western Sydney	7	1,492	1,827	190	201	158	27	98	1,868	737	1,308	1,912	696	839	221	992	5,059
Inner Western Sydney	1	348	607	37	89	185	34	121	1,457	361	854	1,487	485	417	327	1,045	1,683
Central Western Sydney	9	1,313	2,142	144	194	450	57	263	2,796	1,104	2,185	3,228	1,164	726	711	2,457	3,845
Outer Western Sydney	2	1,325	2,063	199	227	198	12	78	2,144	1,053	1,309	2,438	802	1,050	287	1,589	5,667
Blacktown	2	1,843	2,138	200	224	300	15	102	2,656	724	1,709	2,664	1,011	937	402	2,579	5,105
Lower Northern Sydney	0	377	856	63	143	136	21	79	1,743	938	710	2,027	763	600	426	1,627	2,954
Central Northern Sydney	3	615	982	81	131	105	6	60	1,847	958	697	2,254	545	724	244	1,306	3,492
Northern Beaches	1	390	734	69	125	72	5	24	1,277	536	435	1,252	405	549	241	778	2,754
Gosford-Wyong	4	1,320	2,079	215	296	78	8	38	2,043	1,369	1,149	2,396	806	1,313	269	1,167	5,437
Newcastle	4	2,428	3,656	330	428	203	17	117	3,853	3,257	2,564	5,204	1,192	2,649	539	2,006	9,874
Wollongong	2	1,054	1,922	184	184	140	7	84	2,089	1,251	1,235	1,986	729	957	351	1,177	4,802

\* Number of victims.

**TABLE 2.3A: TRENDS IN RECORDED CRIMINAL INCIDENTS FOR MAJOR OFFENCES, JANUARY 2006 TO DECEMBER 2007, NSW LOCAL GOVERNMENT AREAS**

NSW LGAs	Murder*	Assault - domestic violence related	Assault - non-domestic violence related	Sexual assault	Indecent assault, act of indecency and other sexual offences	Robbery without a weapon	Robbery with a firearm	Robbery with a weapon not a firearm	Break and enter - dwelling	Break and enter - non-dwelling	Motor vehicle theft	Steal from motor vehicle	Steal from retail store	Steal from dwelling	Steal from person	Fraud	Malicious damage to property
Albury	.	ns	ns	ns	ns	.	.	.	ns	ns	ns	ns	ns	ns	ns	ns	ns
Armidale Dumaresq	.	ns	ns	71.4	ns	.	.	-38.7	ns	ns	ns	ns	ns	ns	.	-27.1	ns
Ashfield	.	ns	ns	.	.	ns	.	.	ns	ns	ns	ns	ns	ns	ns	.	ns
Auburn	.	ns	ns	91.7	ns	ns	.	.	ns	ns	ns	21.3	ns	ns	ns	ns	ns
Ballina	.	ns	18.5	ns	ns	.	.	.	ns	ns	ns	24.8	ns	ns	ns	ns	ns
Balranald	.	.	ns	.	.	.	.	.	.	.	.	ns	.	.	.	.	ns
Bankstown	.	ns	ns	ns	-29.3	-31.9	ns	ns	ns	ns	-17.8	ns	-27.7	-16.0	ns	ns	ns
Bathurst Regional	.	ns	ns	ns	ns	.	.	.	ns	ns	ns	ns	ns	ns	ns	ns	ns
Baulkham Hills	.	ns	ns	ns	ns	ns	.	.	ns	-32.9	ns	37.6	ns	ns	31.1	ns	ns
Bega Valley	.	ns	ns	.	.	.	.	.	ns	ns	ns	ns	ns	ns	ns	ns	ns
Bellingen	.	ns	ns	.	.	.	.	.	ns	ns	ns	ns	ns	ns	ns	ns	ns
Berrigan	.	.	ns	.	.	.	.	.	ns	ns	.	.	.	ns	.	.	ns
Blacktown	.	ns	ns	ns	ns	ns	.	.	ns	-14.4	ns	ns	ns	ns	ns	ns	ns
Bland	.	.	ns	.	.	.	.	.	ns	ns	.	.	.	ns	.	.	ns
Blayney	.	ns	ns	.	.	.	.	.	.	.	.	.	.	ns	.	.	-26.4
Blue Mountains	.	ns	ns	ns	ns	ns	.	.	ns	-37.0	ns	ns	ns	ns	ns	ns	ns
Bogan	.	.	ns	.	.	.	.	.	.	.	.	.	.	.	.	.	ns
Bombala	.	.	.	.	.	.	.	.	.	.	.	.	.	.	.	.	ns
Boorowa	.	.	.	.	.	.	.	.	.	.	.	.	.	.	.	.	ns
Botany Bay	.	ns	ns	.	.	ns	.	.	ns	-33.5	38.3	68.9	ns	ns	ns	ns	ns
Bourke	.	ns	-35.3	.	.	.	.	.	ns	-39.6	-43.3	ns	ns	-32.3	.	.	-33.3
Brewarrina	.	ns	ns	.	.	.	.	.	ns	.	.	.	.	.	.	.	-44.1
Broken Hill	.	ns	ns	ns	ns	.	.	.	ns	ns	ns	ns	-43.6	ns	.	ns	13.8
Burwood	.	ns	ns	.	.	ns	.	.	ns	ns	ns	36.9	ns	57.6	ns	ns	ns
Byron	.	-16.9	ns	ns	ns	.	.	.	ns	ns	ns	ns	ns	ns	ns	ns	ns
Cabonne	.	ns	ns	.	.	.	.	.	ns	ns	.	.	.	ns	.	.	ns
Camden	.	ns	ns	.	ns	.	.	.	ns	ns	ns	ns	ns	ns	.	.	ns
Campbelltown	.	ns	ns	ns	ns	ns	.	.	ns	ns	-21.2	ns	ns	ns	ns	ns	ns
Canada Bay	.	ns	ns	.	.	ns	.	.	ns	ns	ns	91.5	ns	ns	ns	19.8	9.0
Canterbury	.	ns	ns	ns	ns	-23.9	.	-23.5	-14.5	-38.2	ns	ns	ns	ns	ns	ns	ns
Carrathool	.	.	.	.	.	.	.	.	.	.	.	.	.	.	.	.	ns
Central Darling	.	ns	-43.0	.	.	.	.	.	ns	.	.	.	.	.	.	.	ns
Cessnock	.	ns	ns	ns	ns	.	.	.	ns	ns	ns	ns	33.3	ns	.	ns	ns
Clarence Valley	.	-20.3	ns	ns	ns	.	.	.	ns	ns	ns	ns	ns	ns	.	ns	ns
Cobar	.	ns	ns	.	.	.	.	.	.	.	.	.	.	.	.	.	ns
Coffs Harbour	.	ns	ns	ns	ns	.	.	.	ns	ns	ns	ns	-31.8	ns	ns	ns	-11.5
Conargo	.	.	.	.	.	.	.	.	.	.	.	.	.	.	.	.	ns
Coolamon	.	.	.	.	.	.	.	.	.	.	.	.	.	.	.	.	ns
Cooma-Monaro	.	ns	ns	.	.	.	.	.	ns	.	.	.	.	ns	.	.	ns
Coonamble	.	-37.5	-37.8	.	.	.	.	.	ns	ns	.	.	.	ns	.	.	ns
Cootamundra	.	ns	ns	.	.	.	.	.	ns	ns	.	.	.	ns	.	.	ns
Corowa Shire	.	-32.6	ns	.	.	.	.	.	ns	-58.2	.	-55.6	.	ns	.	.	ns
Cowra	.	ns	ns	.	ns	.	.	.	ns	.	.	.	ns	ns	.	-26.5	-17.0
Deniliquin	.	ns	ns	.	.	.	.	.	ns	ns	.	.	.	ns	.	.	ns
Dubbo	.	ns	ns	ns	ns	ns	.	.	ns	-46.2	-31.6	-42.0	ns	ns	ns	ns	-16.8
Dungog	.	ns	.	.	.	.	.	.	ns	.	.	.	.	.	.	.	102.2
Eurobodalla	.	ns	ns	ns	ns	.	.	.	ns	ns	59.3	ns	ns	ns	ns	ns	ns
Fairfield	.	ns	ns	ns	ns	-26.3	ns	ns	ns	ns	-14.8	ns	ns	ns	ns	ns	ns
Forbes	.	ns	-31.1	.	.	.	.	.	ns	ns	ns	ns	.	ns	.	.	ns
Gilgandra	.	ns	ns	.	.	.	.	.	ns	ns	.	.	.	ns	.	.	ns
Glen Innes Severn	.	ns	ns	.	.	.	.	.	-26.9	ns	.	.	.	ns	.	.	45.9
Gloucester	.	.	.	.	.	.	.	.	.	.	.	.	.	ns	.	.	-36.4
Gosford	.	ns	ns	ns	ns	ns	.	.	-22.1	-28.5	ns	ns	ns	ns	18.3	-22.8	ns
Goulburn Mulwaree	.	42.3	ns	ns	ns	.	.	.	ns	ns	ns	ns	ns	-31.3	.	-23.6	ns
Great Lakes	.	ns	ns	.	.	.	.	.	ns	ns	ns	-29.3	ns	ns	ns	ns	ns
Greater Hume Shire	.	ns	ns	.	.	.	.	.	ns	ns	ns	.	.	.	.	.	ns
Greater Taree	.	ns	ns	ns	ns	.	.	.	ns	ns	ns	ns	ns	ns	ns	ns	14.9
Griffith	.	ns	ns	.	.	.	.	.	ns	ns	ns	ns	-20.4	-32.9	.	ns	21.9
Gundagai	.	.	.	.	.	.	.	.	.	.	.	.	.	.	.	.	ns
Gunnedah	.	ns	ns	.	.	.	.	.	ns	ns	.	.	.	ns	.	-45.2	ns
Guyra	.	ns	ns	.	.	.	.	.	ns	.	.	.	.	.	.	.	ns
Gwydir	.	.	ns	.	.	.	.	.	ns	.	.	.	.	.	.	.	ns
Harden	.	.	.	.	.	.	.	.	.	.	.	.	.	.	.	.	ns
Hastings	.	ns	ns	ns	ns	.	.	.	ns	ns	ns	ns	ns	ns	ns	ns	ns
Hawkesbury	.	ns	ns	ns	ns	.	.	.	ns	ns	ns	ns	ns	ns	ns	ns	ns
Hay	.	.	.	.	.	.	.	.	.	.	.	.	.	.	.	.	ns
Holroyd	.	ns	ns	ns	ns	ns	.	-19.7	.	-25.8	ns	ns	ns	ns	ns	ns	ns
Hornsby	.	ns	ns	ns	ns	.	.	ns	-2.5	-24.3	ns	ns	ns	ns	ns	ns	ns
Hunters Hill	.	.	ns	.	.	.	.	.	ns	.	.	.	.	ns	.	.	59.6
Hurstville	.	ns	ns	ns	ns	44.0	ns	ns	-23.2	ns	42.4	ns	ns	ns	ns	ns	ns
Inverell	.	ns	ns	.	.	.	.	.	ns	ns	.	.	.	ns	.	-18.2	ns
Jerilderie	.	.	.	.	.	.	.	.	.	.	.	.	.	.	.	.	ns
Juneee	.	ns	ns	.	.	.	.	.	ns	ns	.	.	.	.	.	.	ns
Kempsey	.	ns	ns	ns	ns	.	.	.	ns	ns	ns	ns	ns	ns	.	.	ns
Kiama	.	ns	ns	.	.	.	.	.	ns	ns	ns	ns	.	ns	.	.	ns
Kogarah	.	ns	ns	.	.	.	.	.	ns	ns	ns	30.1	ns	ns	ns	ns	ns
Ku-ring-gai	.	ns	ns	.	.	.	.	.	24.4	.	-30.4	21.2	ns	ns	ns	ns	ns
Kyogle	.	ns	ns	.	.	.	.	.	ns	ns	.	.	.	ns	.	.	ns
Lachlan	.	ns	ns	.	.	.	.	.	ns	ns	.	.	.	ns	.	.	ns
Lake Macquarie	.	ns	ns	ns	ns	.	-30.8	ns	-20.7	ns	-11.5	ns	ns	ns	ns	ns	ns

**TABLE 2.3A: TRENDS IN RECORDED CRIMINAL INCIDENTS FOR MAJOR OFFENCES, JANUARY 2006 TO DECEMBER 2007, NSW LOCAL GOVERNMENT AREAS**

NSW LGAs	Murder*	Assault - domestic violence related	Assault - non-domestic violence related	Sexual assault	Indecent assault, act of indecency and other sexual offences	Robbery without a weapon	Robbery with a firearm	Robbery with a weapon not a firearm	Break and enter - dwelling	Break and enter - non-dwelling	Motor vehicle theft	Steal from motor vehicle	Steal from retail store	Steal from dwelling	Steal from person	Fraud	Malicious damage to property
Lane Cove	ns	ns	ns	.	.	.	.	31.8	ns	ns	117.9	.	ns	.	ns	ns	ns
Leeton	ns	ns	.	.	.	.	.	ns	ns	ns	ns	.	ns	.	ns	ns	ns
Leichhardt	ns	ns	.	.	ns	ns	.	ns	ns	ns	ns	ns	ns	ns	ns	ns	ns
Lismore	ns	ns	ns	ns	.	.	.	ns	ns	ns	61.4	ns	ns	-22.8	ns	ns	ns
Lithgow	ns	ns	ns	ns	.	.	.	ns	ns	ns	ns	ns	ns	.	ns	ns	ns
Liverpool	ns	ns	ns	ns	ns	ns	.	-10.1	-16.6	ns	24.5	ns	ns	ns	ns	ns	ns
Liverpool Plains	ns	ns	.	.	.	.	.	.	ns	.	.	.	.	.	.	.	ns
Lockhart	.	.	.	.	.	.	.	.	.	.	.	.	.	.	.	.	ns
Lord Howe Island	.	.	.	.	.	.	.	.	.	.	.	.	.	.	.	.	.
Maitland	ns	ns	ns	ns	ns	ns	.	.	.	.	25.9	ns	ns	ns	ns	ns	ns
Manly	ns	ns	ns	ns	.	.	.	-36.3	ns	ns	ns	ns	ns	ns	ns	65.4	ns
Marrickville	ns	ns	57.1	-11.6	-33.1	.	.	ns	-26.8	ns	ns	ns	ns	ns	ns	ns	ns
Mid-Western Regional	85.3	ns	.	.	.	.	.	ns	ns	ns	77.3	82.8	ns	ns	ns	ns	16.0
Moree Plains	ns	ns	.	.	ns	.	.	37.5	ns	ns	ns	34.5	ns	ns	ns	ns	ns
Mosman	ns	ns	.	.	.	.	.	ns	ns	ns	ns	ns	ns	.	.	ns	ns
Murray	.	.	.	.	.	.	.	.	.	.	.	.	-33.3	.	.	.	ns
Murrumbidgee	.	.	.	.	.	.	.	.	.	.	.	.	.	.	.	.	ns
Muswellbrook	ns	ns	.	.	.	.	.	ns	ns	ns	ns	ns	ns	.	.	ns	ns
Nambucca	ns	ns	.	.	.	.	.	ns	ns	ns	152.7	ns	ns	.	.	ns	23.9
Narrabri	ns	ns	.	.	.	.	.	ns	ns	ns	ns	ns	ns	.	.	ns	ns
Narrandera	ns	ns	.	.	.	.	.	ns	-38.1	.	-38.8	.	.	.	.	ns	ns
Narromine	ns	ns	.	.	.	.	.	ns	.	.	.	.	.	.	.	.	ns
Newcastle	ns	ns	ns	ns	ns	ns	.	ns	ns	ns	ns	ns	-14.8	ns	ns	ns	ns
North Sydney	ns	ns	.	.	ns	ns	.	ns	ns	ns	ns	ns	ns	ns	ns	ns	ns
Oberon	.	.	.	.	.	.	.	.	.	.	.	.	.	.	.	.	ns
Orange	ns	ns	ns	ns	.	.	.	ns	-54.3	ns	ns	ns	ns	ns	ns	ns	ns
Palerang	ns	ns	.	.	.	.	.	ns	ns	ns	ns	.	.	.	.	.	ns
Parkes	ns	ns	.	.	.	.	.	26.6	132.9	38.2	78.4	ns	ns	.	.	.	ns
Parramatta	ns	ns	ns	ns	ns	ns	.	ns	ns	-17.3	20.6	ns	ns	ns	18.9	ns	ns
Penrith	ns	ns	ns	ns	ns	ns	.	-22.8	ns	-6.1	ns	ns	ns	ns	ns	-21.2	ns
Pittwater	-30.3	ns	.	.	.	.	.	-36.8	-25.6	ns	ns	ns	ns	ns	ns	ns	ns
Port Stephens	ns	ns	ns	ns	.	.	.	ns	ns	ns	ns	48.5	ns	ns	ns	ns	ns
Queanbeyan	ns	ns	.	.	.	.	.	ns	ns	ns	ns	ns	-11.2	.	.	.	ns
Randwick	24.0	ns	ns	ns	ns	ns	.	ns	ns	30.8	ns	ns	ns	ns	ns	ns	ns
Richmond Valley	ns	ns	ns	ns	ns	.	.	ns	ns	ns	40.3	ns	ns	.	.	.	ns
Rockdale	ns	ns	ns	ns	ns	ns	.	ns	-31.9	ns	38.4	ns	ns	ns	ns	ns	ns
Ryde	ns	ns	ns	ns	ns	ns	.	ns	ns	ns	ns	ns	ns	ns	ns	ns	ns
Shellharbour	ns	ns	ns	ns	.	.	.	ns	ns	-23.6	ns	ns	ns	ns	ns	ns	ns
Shoalhaven	ns	ns	ns	ns	ns	ns	.	ns	ns	ns	ns	-34.4	ns	ns	ns	ns	ns
Singleton	ns	ns	.	.	.	.	.	ns	ns	ns	-30.4	ns	ns	.	.	.	ns
Snowy River	.	.	.	.	.	.	.	ns	ns	.	.	.	.	.	.	.	ns
Strathfield	34.0	ns	.	.	ns	ns	.	ns	ns	ns	55.3	ns	ns	ns	ns	26.1	ns
Sutherland Shire	ns	8.1	ns	-13.7	.	.	.	ns	ns	ns	ns	-18.8	ns	ns	ns	ns	ns
Sydney	ns	ns	ns	ns	ns	ns	.	ns	ns	ns	ns	10.7	-8.2	ns	ns	ns	ns
Tamworth Regional	ns	ns	ns	-35.9	.	.	.	46.4	39.9	ns	ns	ns	ns	ns	ns	ns	ns
Temora	.	.	.	.	.	.	.	.	.	.	.	.	.	.	.	.	ns
Tenterfield	ns	ns	.	.	.	.	.	ns	ns	.	.	.	.	.	.	.	ns
Tumbarumba	.	.	.	.	.	.	.	.	.	.	.	.	.	.	.	.	ns
Tumut Shire	-43.2	ns	.	.	.	.	.	ns	ns	.	.	.	-53.5	.	.	.	ns
Tweed	ns	ns	ns	ns	.	.	.	ns	ns	ns	-12.6	ns	ns	ns	ns	ns	ns
Unincorporated Far West	.	.	.	.	.	.	.	.	.	.	.	.	.	.	.	.	ns
Upper Hunter Shire	.	.	ns	.	.	.	.	ns	ns	.	.	.	.	.	.	.	ns
Upper Lachlan	.	.	.	.	.	.	.	.	.	.	.	.	.	.	.	.	ns
Uralla	ns	ns	.	.	.	.	.	-47.4	ns	.	.	.	.	.	.	.	ns
Urana	.	.	.	.	.	.	.	.	.	.	.	.	.	.	.	.	ns
Wagga Wagga	ns	ns	ns	ns	.	.	.	ns	ns	ns	-23.0	46.8	ns	ns	ns	ns	ns
Wakool	.	.	.	.	.	.	.	.	.	.	.	.	.	.	.	.	ns
Walcha	.	.	.	.	.	.	.	.	.	.	.	.	.	.	.	.	ns
Walgett	-25.6	ns	.	.	.	.	.	ns	ns	ns	ns	.	.	.	.	ns	-29.1
Warren	ns	ns	.	.	.	.	.	ns	ns	ns	ns	.	.	.	.	.	ns
Warragah	ns	ns	ns	ns	ns	ns	.	-13.2	ns	ns	ns	ns	ns	ns	ns	ns	ns
Warrumbungle Shire	ns	ns	.	.	.	.	.	ns	ns	ns	ns	.	.	.	.	.	ns
Waverley	ns	ns	ns	ns	ns	ns	.	ns	ns	ns	ns	-15.5	ns	ns	ns	ns	ns
Weddin	.	.	.	.	.	.	.	.	.	.	.	.	.	.	.	.	ns
Wellington	ns	ns	.	.	.	.	.	ns	-31.6	.	.	.	.	.	.	.	ns
Wentworth	37.7	ns	.	.	.	.	.	ns	ns	ns	ns	.	.	.	.	.	ns
Willoughby	ns	ns	.	.	ns	ns	.	ns	ns	ns	40.9	21.7	ns	ns	ns	ns	8.8
Wingecarribee	ns	ns	ns	ns	.	.	.	-27.1	ns	-28.9	ns	ns	ns	ns	ns	ns	ns
Wollondilly	ns	ns	.	.	.	.	.	ns	ns	ns	-45.1	ns	ns	.	.	.	ns
Wollongong	ns	ns	ns	-25.4	.	.	.	-30.4	-29.3	-25.9	ns	23.6	ns	ns	ns	ns	ns
Woollahra	ns	ns	ns	ns	ns	ns	.	ns	ns	ns	ns	ns	ns	ns	ns	ns	ns
Wyong	ns	ns	ns	-39.1	.	.	.	ns	-34.2	ns	ns	ns	-21.3	ns	ns	ns	14.1
Yass Valley	.	.	.	.	.	.	.	ns	ns	.	.	.	.	.	.	.	39.4
Young	ns	ns	.	.	.	.	.	ns	ns	ns	ns	.	.	.	.	.	ns
NSW	ns	ns	ns	ns	ns	ns	ns	-7.0	ns	-10.4	-5.5	6.6	ns	ns	ns	ns	ns

^ This table shows the results of a statistical test for significant upward (highlighted in red) or downward (highlighted in yellow) trends in the number of recorded criminal incidents over a 24-month period. The trend test used is Kendall's rank-order correlation test. Where the trend is significant ( $p < 0.05$ ), the percentage change between the last 12-month period and the preceding 12-month period is shown. A trend test was not performed if there were fewer than 20 incidents in either of the two years for the period in question; the result '.' indicates that a trend test was not performed. A non-significant test result is denoted by 'ns'.

Trends in recorded criminal incidents by regions

**TABLE 2.3B: RATIO OF THE RATE OF RECORDED CRIMINAL INCIDENTS PER 100,000 POPULATION COMPARED WITH NSW FOR MAJOR OFFENCES, 2007, NSW LOCAL GOVERNMENT AREAS**

NSW LGAs	Murder*	Assault - domestic violence related	Assault - non-domestic violence related	Sexual assault	Indecent assault, act of indecency and other sexual offences	Robbery without a weapon	Robbery with a firearm	Robbery with a weapon not a firearm	Break and enter - dwelling	Break and enter - non-dwelling	Motor vehicle theft	Steal from motor vehicle	Steal from retail store	Steal from dwelling	Steal from person	Fraud	Malicious damage to property
Albury	1.7	1.5	1.5	1.4	2.1	0.6	0.3	0.3	1.6	2.5	1.5	1.3	1.3	1.8	0.6	1.1	1.6
Armidale Dumaresq	3.4	1.3	1.5	2.4	1.3	0.6			1.2	2.2	0.5	0.6	1.1	1.7	0.4	0.4	1.4
Ashfield		0.7	0.6	0.5	0.6	2.2	1.9	1.7	1.2	0.4	1.0	1.2	0.9	1.0	0.8	1.0	0.7
Auburn	1.3	0.8	0.9	1.2	0.8	2.8	4.1	2.9	1.2	1.0	2.2	1.5	1.1	0.4	1.7	1.2	0.8
Ballina	2.1	1.1	1.2	1.1	1.3	0.7	0.3	0.4	1.1	1.5	0.5	0.8	0.7	1.6	0.5	0.9	1.0
Balranald																	
Bankstown	2.3	0.9	0.7	0.5	0.4	1.0	3.3	2.3	0.9	0.7	1.7	1.0	0.8	0.5	0.6	1.9	0.7
Bathurst Regional		1.3	1.3	2.1	1.3	0.6		0.3	1.2	1.2	0.8	1.0	1.0	1.5	0.4	0.7	1.3
Baulkham Hills	1.5	0.5	0.3	0.3	0.4	0.3	0.3	0.3	0.6	0.4	0.5	0.8	0.7	0.5	0.4	0.7	0.5
Bega Valley		0.7	0.8	1.1	0.7	0.1		0.1	0.4	2.2	0.4	0.5	0.4	1.0	0.1	0.4	0.8
Bellingen		0.7	0.7	0.7	1.0				0.4	1.1	0.4	0.4	0.2	1.1	0.1	0.2	0.7
Berrigan		0.4	0.4	0.4	0.5				0.6	1.7	0.5	0.2	0.4	1.5	0.1	0.2	0.8
Blacktown	1.2	1.5	1.1	1.1	1.1	1.5	0.8	1.1	1.3	0.6	1.5	1.1	1.2	1.0	0.8	1.6	1.1
Bland		1.0	0.8	1.8	2.3				0.5	1.6	0.3	0.5	0.2	1.3	0.1	1.0	0.9
Blayney		1.0	0.4	2.9	1.2				0.3	0.6	0.1	0.6	0.1	1.2		0.2	1.0
Blue Mountains		0.8	0.7	0.8	0.8	0.4		0.4	0.7	0.9	0.4	0.5	0.4	1.0	0.3	0.5	1.3
Bogan	26.7	0.9	2.2	1.6	2.6				0.6	0.8	0.3	0.6	0.4	1.1		0.9	1.2
Bombala																	
Boorowa																	
Botany Bay	2.2	1.1	1.1	0.6	0.9	1.9	3.7	1.5	1.1	0.8	2.0	1.6	0.8	0.9	2.4	1.8	1.1
Bourke		7.6	3.4	7.3	3.1	0.4		2.3	3.2	2.1	2.5	1.4	3.4	3.2	1.0	0.4	3.8
Brewarrina																	
Broken Hill		2.0	1.4	1.7	1.3	0.1			2.1	2.1	0.9	0.9	0.4	2.2	0.3	0.5	1.8
Burwood		0.6	0.9	0.6	0.7	2.8	2.0	2.3	1.5	0.7	1.5	1.6	3.5	1.3	3.5	2.2	0.7
Byron		0.8	1.8	1.7	1.3	0.4		0.4	0.8	1.3	0.8	1.0	1.2	2.2	2.0	1.2	1.0
Cabonne		0.8	0.7	0.8	0.3	0.4			0.7	0.9	0.4	0.4	0.3	1.2	0.2	0.2	1.0
Camden		0.6	0.5	0.6	0.6	0.5	0.5	0.4	0.5	0.6	0.6	0.5	0.6	0.8	0.2	0.7	0.9
Campbelltown	2.2	1.9	1.5	1.3	1.4	1.6	1.6	1.2	1.4	0.9	1.4	1.0	1.4	1.1	0.8	0.8	1.5
Canada Bay		0.3	0.3	0.4	0.4	0.7	2.3	1.0	1.0	0.5	1.1	1.4	0.3	0.6	0.5	0.9	0.5
Canterbury		0.7	0.5	0.5	0.6	1.6	1.7	1.9	0.8	0.3	1.4	0.7	0.5	0.4	0.5	0.9	0.6
Carrathool	25.5	1.1	0.5	1.0	0.8				0.6	1.0	0.5	0.6	0.1	0.9		0.6	0.9
Central Darling																	
Cessnock		1.4	1.1	1.4	0.8	0.2		0.5	1.0	1.6	1.2	0.6	0.7	1.5	0.3	0.6	1.1
Clarence Valley		0.8	1.2	1.4	1.1	0.2	0.5	0.1	1.1	2.0	0.8	0.8	0.8	1.7	0.3	0.4	1.2
Cobar		2.0	1.6	3.3	3.2	0.3			0.5	1.8	0.5	0.9	0.4	2.3	0.2	1.0	1.8
Coffs Harbour	2.4	1.0	1.1	1.8	1.4	0.4	0.4	0.3	0.8	2.0	0.8	1.2	1.0	1.4	0.6	0.7	1.2
Conargo																	
Coolamon		0.4	0.2	0.4	0.3		3.0		0.3	0.6	0.2	0.1		0.6		0.4	0.4
Cooma-Monaro		0.8	1.1	1.5	0.8				0.7	0.8	0.4	0.3	0.5	1.5	0.1	0.7	1.2
Coonamble		2.4	1.9	1.4	1.7	0.3			2.1	2.7	0.6	0.9	0.8	2.2	0.5	0.5	2.2
Cootamundra		1.2	1.1	1.1	1.6	0.4		0.4	0.7	1.0	0.4	0.5	0.6	1.7	0.6	0.3	1.3
Corowa Shire		0.7	0.7	1.9	0.8				0.6	0.6	0.4	0.3	0.3	1.3	0.3	0.2	0.7
Cowra		1.1	0.9	1.4	2.3	0.3		0.2	1.6	1.7	0.4	0.4	0.7	1.6	0.0	0.4	1.4
Deniliquin		1.0	1.0	1.9	2.1				1.0	0.9	0.1	0.4	0.1	1.4	0.1	0.5	1.4
Dubbo		2.1	1.7	1.4	2.0	0.9		0.7	1.9	1.3	1.2	1.1	1.5	1.9	0.6	0.9	1.8
Dungog		0.9	0.3	1.2	0.6				0.5	0.9	0.2	0.4	0.1	0.6		0.2	0.7
Eurobodalla		0.9	1.2	1.6	1.5	0.3	0.3	0.2	1.1	1.6	0.9	0.8	0.7	1.6	0.3	0.5	1.1
Fairfield	1.8	1.0	0.7	0.6	0.5	1.1	2.5	1.3	1.1	0.6	1.1	0.8	0.9	0.5	0.6	1.2	0.6
Forbes		2.2	1.1	1.8	1.3	0.3	1.2		1.1	1.9	0.6	1.1	0.3	2.1	0.2	0.4	1.6
Gilgandra		2.0	2.1	2.5	10.3	0.3			0.7	1.9	0.5	0.4	0.7	1.7	0.2	1.4	1.6
Glen Innes Severn	19.0	1.1	1.0	2.3	1.2				0.8	1.0	0.3	0.4	0.9	1.3	0.1	0.4	1.4
Gloucester		0.8	0.7	1.4	1.1				0.3	1.0	0.2	0.2	0.2	1.3	0.1	0.1	0.6
Gosford		0.9	1.0	1.0	0.9	0.4	0.2	0.3	0.7	0.9	0.7	0.7	1.2	1.0	0.7	0.5	1.1
Goulburn Mulwaree		1.3	1.2	1.5	1.0	0.3		0.5	1.0	1.0	0.6	0.5	0.8	1.1	0.3	0.5	1.5
Great Lakes		1.5	1.1	0.9	1.0	0.5	0.7	0.3	1.8	1.6	1.1	0.7	0.8	1.3	0.5	0.8	1.1
Greater Hume Shire	7.9	0.6	0.4	1.7	0.5				0.6	0.9	0.5	0.2	0.4	0.9	0.2	0.5	0.5
Greater Taree		1.6	1.2	1.5	1.7	0.5	0.8	0.2	1.2	1.5	1.0	0.5	0.9	1.6	0.3	0.6	1.1
Griffith	3.3	1.5	1.5	1.6	1.8	0.1		0.5	1.3	1.0	0.7	0.7	1.1	1.1	0.3	0.9	1.7
Gundagai		1.5	0.4	0.4	1.4	0.7			0.4	0.4	0.2	0.3	0.6	0.6	0.2	1.4	0.5
Gunnedah		1.3	1.6	2.3	1.8	0.2			1.0	2.1	0.3	0.9	0.6	1.5	0.3	0.4	1.7
Guyra		1.3	1.2	3.4					0.7	0.8	0.4	0.3	0.3	0.9	0.1	0.3	1.1
Gwydir		0.7	1.0	0.9	0.2				0.5	1.1	0.4	0.3	0.5	0.9	0.2	0.4	0.7
Harden		1.2	0.7	0.4	1.1			0.8	0.7	1.2	0.1	0.3	0.2	1.0		0.3	0.7
Hastings	1.2	0.9	0.8	1.4	1.3	0.2		0.2	0.8	0.9	0.4	0.5	0.8	1.4	0.4	0.5	0.9
Hawkesbury		1.0	0.8	1.0	1.1	0.6	0.4	0.5	0.9	0.9	0.8	0.5	0.6	0.9	0.3	0.6	1.0
Hay		1.6	0.8	6.2	1.1				0.3	0.9	0.4	0.2	0.1	0.4		0.6	0.6
Holroyd		1.3	0.8	0.9	0.8	1.5	2.4	1.9	1.3	0.6	1.6	1.1	0.9	0.7	0.7	1.8	0.8
Hornsby		0.4	0.4	0.5	0.6	0.5	0.3	0.4	0.5	0.6	0.3	0.7	0.7	0.4	0.3	0.6	0.6
Hunters Hill		0.3	0.4	0.1	0.9	0.2		0.4	0.8	0.4	0.5	0.8	0.0	0.5	0.1	0.5	0.8
Hurstville		0.7	0.6	0.4	0.9	2.0	1.3	1.7	0.7	0.4	0.8	0.8	1.0	0.5	0.5	0.8	0.8
Inverell		1.8	1.6	2.5	1.3	0.2			0.7	0.8	0.2	0.5	1.4	2.3	0.3	0.5	1.1
Jerilderie																	
Juneee		1.1	0.9	1.9	1.3	0.2		0.5	0.9	2.1	0.4	0.6	0.6	1.2		0.2	0.8
Kempsey		1.9	1.4	1.6	1.6	0.6	0.9	0.4	1.3	2.4	1.1	0.6	1.1	1.8	0.3	0.6	1.3
Kiama		0.3	0.6	0.7	0.8	0.3	0.6	0.1	0.5	0.8	0.5	0.6	0.2	0.5	0.2	0.3	0.7
Kogarah		0.6	0.4	0.3	0.7	1.0	1.1	1.5	0.7	0.3	0.9	0.7	0.7	0.3	0.5	1.0	0.6
Ku-ring-gai		0.2	0.2	0.2	0.3	0.3	0.7		0.8	0.5	0.2	0.5	0.1	0.6	0.3	0.3	0.4
Kyogle		1.1	1.1	2.1	1.8				0.9	1.0	0.3	0.4	0.3	1.6	0.1	0.4	0.8
Lachlan		2.5	1.2	2.7	2.2	0.2			1.2	2.5	0.5	0.6	0.4	1.7	0.2	0.3	1.7
Lake Macquarie	0.9	1.0	0.7	1.2	1.0	0.4	0.4	0.4	0.8	1.2	1.0	0.8	0.9	1.1	0.3	0.6	1.0

**TABLE 2.3B: RATIO OF THE RATE OF RECORDED CRIMINAL INCIDENTS PER 100,000 POPULATION COMPARED WITH NSW FOR MAJOR OFFENCES, 2007, NSW LOCAL GOVERNMENT AREAS**

NSW LGAs	Murder*	Assault - domestic violence related	Assault - non-domestic violence related	Sexual assault	Indecent assault, act of indecency and other sexual offences	Robbery without a weapon	Robbery with a firearm	Robbery with a weapon not a firearm	Break and enter - dwelling	Break and enter - non-dwelling	Motor vehicle theft	Steal from motor vehicle	Steal from retail store	Steal from dwelling	Steal from person	Fraud	Malicious damage to property
Lane Cove	.	0.2	0.3	0.2	0.5	0.2	0.4	0.2	0.9	0.8	0.5	1.2	0.2	0.6	0.2	0.7	0.5
Leeton	.	1.1	1.6	1.1	2.3	.	.	.	1.3	2.2	0.5	0.9	0.3	1.9	0.1	0.4	1.5
Leichhardt	1.6	0.5	0.9	0.4	0.7	1.0	3.6	1.6	1.2	0.8	1.7	1.8	0.9	1.1	1.0	1.2	0.9
Lismore	.	1.5	1.7	1.8	1.5	0.5	0.6	0.5	1.2	1.1	1.2	0.8	1.5	1.4	0.8	0.6	1.1
Lithgow	.	1.4	1.5	1.5	1.5	0.3	.	0.3	1.0	1.2	0.9	0.7	0.6	1.7	0.4	0.5	1.4
Liverpool	1.9	1.0	0.8	1.1	0.7	1.0	1.3	1.6	1.0	0.7	1.3	1.2	1.1	0.6	0.7	1.3	0.9
Liverpool Plains	.	1.5	1.5	1.3	1.7	0.4	.	.	0.2	1.0	0.1	0.2	0.4	0.8	0.1	0.2	0.8
Lockhart	.	0.6	0.3	0.5	0.8	.	.	.	0.3	0.9	0.2	.	0.2	0.8	.	0.5	0.6
Lord Howe Island	.	.	.	.	.	.	.	.	.	.	.	.	.	.	.	.	.
Maitland	2.7	1.3	1.0	1.3	1.2	0.5	.	0.7	1.0	1.9	1.3	1.3	0.9	1.6	0.5	0.8	1.1
Manly	.	0.5	1.1	1.0	1.1	0.8	0.6	0.3	0.7	0.6	0.8	0.7	1.2	1.9	1.2	1.1	1.1
Marrickville	1.1	1.2	1.0	1.0	1.3	2.0	2.8	3.6	1.7	0.9	1.9	2.4	1.0	1.3	1.1	1.7	1.2
Mid-Western Regional	3.7	1.4	1.0	1.6	1.6	0.2	.	0.1	0.6	1.3	0.4	0.6	0.9	1.4	0.1	0.4	1.2
Moree Plains	.	3.9	3.1	2.3	2.6	1.0	.	0.2	3.6	4.4	1.6	1.7	1.7	2.2	0.7	0.9	2.3
Mosman	.	0.3	0.3	0.1	0.8	0.2	.	0.1	0.8	0.5	0.7	0.9	0.3	0.6	0.3	0.5	0.6
Murray	.	0.5	0.4	1.0	0.6	.	.	0.8	0.4	1.0	0.4	0.4	0.2	1.1	0.2	0.4	0.8
Murrumbidgee	.	.	.	.	.	.	.	.	.	.	.	.	.	.	.	.	.
Muswellbrook	10.9	1.2	1.1	1.2	0.8	0.6	.	0.2	1.3	2.0	0.5	0.8	0.9	1.6	0.2	0.7	1.7
Nambucca	.	1.4	1.3	2.7	0.7	0.3	.	.	1.0	2.6	0.9	1.1	0.4	1.2	0.3	0.8	1.3
Narrabri	.	1.7	1.5	1.9	1.8	0.2	.	0.2	1.0	1.5	0.5	0.5	0.9	1.6	0.1	0.4	1.4
Narrandera	.	1.0	1.3	1.3	1.2	0.2	.	0.4	1.1	1.1	0.8	0.5	1.0	1.6	0.2	0.9	1.4
Narromine	11.8	1.5	1.7	3.1	1.9	0.2	.	.	0.9	0.8	0.8	0.6	0.9	1.7	0.1	0.7	1.3
Newcastle	4.0	1.3	1.7	1.4	1.6	1.3	0.7	1.1	1.7	2.2	1.6	1.5	1.2	1.5	1.2	1.0	1.4
North Sydney	.	0.4	0.7	0.3	0.6	0.6	0.8	0.5	1.2	1.2	0.8	1.3	0.4	0.8	1.1	1.0	0.7
Oberon	.	0.7	1.0	2.1	0.7	.	.	1.1	0.8	0.7	0.4	0.7	0.1	1.6	0.2	0.3	1.0
Orange	.	1.1	1.2	1.7	1.3	0.6	.	0.4	1.3	0.8	0.9	0.9	1.2	1.5	0.7	0.6	1.7
Palerang	.	0.8	0.5	0.6	0.5	0.2	.	.	0.6	0.8	0.7	0.5	0.1	1.0	0.1	0.4	0.6
Parkes	.	1.6	1.2	0.7	0.9	0.3	.	0.4	1.0	3.5	0.8	1.1	0.6	1.8	0.3	0.3	1.7
Parramatta	1.1	1.1	1.1	0.9	0.8	2.1	1.7	2.0	1.3	0.9	1.4	1.4	1.9	0.7	1.9	1.6	0.8
Penrith	1.4	1.3	1.3	1.1	1.1	1.3	0.6	1.1	0.9	0.8	1.3	0.9	1.3	1.0	0.8	1.1	1.2
Pittwater	.	0.3	0.4	0.5	0.4	0.2	0.2	0.1	0.7	0.6	0.4	0.6	0.3	0.7	0.4	0.6	0.7
Port Stephens	2.6	1.2	0.9	0.8	0.8	0.2	1.0	0.2	1.1	1.4	1.4	1.2	0.9	1.7	0.3	0.5	1.3
Queanbeyan	.	1.1	0.8	0.7	0.9	0.3	0.3	0.2	1.0	0.9	0.8	1.1	0.5	1.0	0.5	1.0	1.0
Randwick	0.7	0.8	0.9	0.5	0.7	1.6	1.5	1.5	1.2	0.5	1.4	0.9	0.9	0.9	1.0	1.1	0.8
Richmond Valley	.	2.3	2.0	3.0	2.3	0.2	.	.	1.2	1.9	1.0	0.9	0.5	2.0	0.3	0.6	1.3
Rockdale	.	0.7	0.4	0.4	0.7	1.1	2.7	2.0	0.8	0.4	1.2	0.9	0.5	0.4	0.5	1.2	0.6
Ryde	0.8	0.5	0.5	0.4	1.1	0.6	1.5	0.6	0.8	0.5	0.6	0.8	1.3	0.4	0.5	1.0	0.5
Shellharbour	.	0.9	0.9	0.9	0.5	0.4	0.4	0.5	0.9	1.1	1.0	0.7	0.7	0.9	0.3	0.6	1.1
Shoalhaven	.	1.3	1.2	1.1	1.0	0.4	0.1	0.3	1.0	1.3	0.9	0.7	0.5	1.3	0.3	0.3	1.3
Singleton	.	0.7	0.5	1.4	1.0	0.2	.	0.1	0.5	0.8	0.5	0.4	0.6	1.4	0.3	0.4	0.9
Snowy River	.	0.5	1.6	0.9	1.5	0.2	.	0.4	0.6	1.2	0.4	0.5	0.4	1.6	0.8	0.9	1.3
Strathfield	.	0.5	0.6	0.3	0.9	2.3	3.4	3.1	1.7	0.6	2.0	1.9	0.6	0.8	1.9	2.0	0.6
Sutherland Shire	1.6	0.6	0.6	0.5	0.6	0.5	0.3	0.4	0.6	0.4	0.6	0.6	0.7	0.5	0.5	0.7	0.9
Sydney	1.6	1.4	4.5	2.0	2.7	9.6	5.2	8.1	1.9	2.9	2.2	5.7	4.3	1.9	16.6	5.0	1.8
Tamworth Regional	.	1.1	1.3	2.0	1.2	0.5	0.5	0.4	1.4	1.3	0.4	1.0	0.9	1.3	0.4	0.6	1.5
Temora	.	0.9	0.9	0.8	1.9	0.4	.	0.5	0.6	1.9	0.2	0.4	0.2	1.4	0.2	0.3	0.8
Tenterfield	.	1.7	1.4	1.0	1.9	.	.	.	1.3	2.8	0.5	0.8	1.8	1.9	0.2	1.1	1.3
Tumbarumba	.	0.3	0.8	0.5	1.8	.	.	.	0.3	0.9	0.1	0.2	0.1	0.6	0.2	0.2	0.8
Tumut Shire	.	1.1	1.0	1.0	2.2	.	.	0.3	0.7	1.3	0.3	0.7	0.3	0.9	0.2	0.5	0.9
Tweed	.	0.8	0.7	0.8	1.0	0.3	0.3	0.2	0.6	1.1	0.7	0.7	1.0	1.0	0.3	0.8	0.8
Unincorporated Far West	.	.	.	.	.	.	.	.	.	.	.	.	.	.	.	.	.
Upper Hunter Shire	.	0.5	0.4	0.5	0.9	.	.	0.2	0.3	1.1	0.3	0.3	0.2	0.7	0.1	0.2	0.7
Upper Lachlan	.	0.6	0.4	0.7	.	0.2	1.7	.	0.3	0.5	0.2	0.1	0.1	0.5	.	0.4	0.8
Uralla	.	1.0	0.8	2.2	1.3	.	.	.	0.5	1.1	0.3	0.4	0.3	0.9	0.2	0.4	0.7
Urana	.	.	.	.	.	.	.	.	.	.	.	.	.	.	.	.	.
Wagga Wagga	.	1.2	1.3	2.1	1.8	0.4	0.2	0.2	1.2	1.3	0.8	1.0	1.6	1.9	0.8	0.6	1.5
Wakool	.	0.6	0.3	.	1.7	.	.	.	0.3	0.7	0.2	0.3	0.2	0.4	.	0.2	0.6
Walcha	.	0.8	0.5	2.0	1.2	0.4	.	.	0.3	1.1	0.2	0.1	0.1	1.0	.	0.3	0.6
Walgett	.	5.7	3.9	2.3	2.8	0.7	.	0.7	2.5	3.7	1.4	1.2	0.6	2.6	0.4	1.0	2.1
Warren	.	2.5	2.1	2.6	1.7	0.4	.	.	1.3	0.9	0.5	0.6	1.3	1.2	0.5	0.6	1.6
Warringham	0.6	0.4	0.3	0.5	0.7	0.2	0.4	0.4	0.5	0.8	0.4	0.5	0.8	0.6	0.3	0.8	0.7
Warrumbungle Shire	.	1.4	1.1	2.9	2.1	.	.	.	0.7	2.1	0.3	0.3	0.5	1.6	0.1	0.4	0.9
Waverley	.	0.7	1.3	0.6	1.7	1.6	0.4	0.8	1.2	0.6	1.4	0.9	3.1	1.0	3.0	2.4	0.9
Weddin	.	0.6	0.8	1.7	1.7	.	.	.	0.2	0.4	0.1	0.1	0.1	0.2	.	0.2	0.8
Wellington	.	1.9	1.3	2.1	1.9	0.3	1.4	0.7	1.9	1.3	0.6	0.3	0.5	2.1	0.4	0.5	1.9
Wentworth	.	3.2	1.3	2.9	2.2	0.4	.	.	1.7	1.6	0.7	0.6	0.4	2.5	0.1	0.5	1.4
Willoughby	1.3	0.4	0.3	0.2	0.5	0.5	1.1	0.8	0.9	0.8	0.5	1.2	2.4	0.5	1.5	1.4	0.8
Wingecarribee	.	0.7	0.7	1.0	0.7	0.4	0.6	.	0.5	1.3	0.5	0.5	0.6	0.8	0.2	0.5	1.1
Wollondilly	.	0.8	0.6	0.8	0.7	0.2	0.6	0.1	0.5	0.8	0.6	0.3	0.4	0.9	0.2	0.5	0.8
Wollongong	1.7	1.0	1.1	1.1	0.7	0.8	0.6	0.7	0.8	1.0	0.8	0.9	1.3	1.1	0.8	0.9	1.1
Woollahra	1.6	0.4	0.5	0.6	0.5	1.1	1.6	1.2	1.3	0.7	1.2	1.4	0.7	1.3	1.5	1.2	0.8
Wyong	2.3	1.5	1.1	1.2	1.0	0.4	0.1	0.3	1.0	0.8	1.0	0.9	1.0	1.1	0.4	0.7	1.3
Yass Valley	.	0.8	0.9	0.8	1.2	0.1	1.0	.	0.5	1.1	0.3	0.4	0.5	1.3	0.3	0.5	1.4
Young	.	1.1	1.4	1.8	1.9	.	.	0.2	0.8	1.6	0.6	0.6	0.6	1.8	0.1	0.4	1.3
NSW	1.0	1.0	1.0	1.0	1.0	1.0	1.0	1.0	1.0	1.0	1.0	1.0	1.0	1.0	1.0	1.0	1.0

^ Ratios are a comparison of NSW SD rates per 100,000 population to the NSW rate per 100,000 population. A ratio of one indicates parity with the state rate. Ratios indicating double the NSW rate (or more) are highlighted in red, whilst ratios indicating half the state rate (or less) are highlighted in yellow. For the rate calculations, population data were obtained from the Australian Bureau of Statistics publication: Regional Population Growth Australia 2005-06, Cat. No. 3218.0 (for 2005 and 2006 population estimates). As no population estimates were available for 2007 when this report was published, rates for 2007 were calculated using 2006 population estimates. A result of '.' indicates either that there were no relevant offences recorded in the LGA, or that the population is less than 3,000 people and no rate was calculated. Sydney LGA can be considered a special case since the population used to calculate the rate is much lower than the population using the area for work and entertainment and this will be reflected in higher incident rates.

TABLE 2.3C: NUMBER OF RECORDED CRIMINAL INCIDENTS FOR MAJOR OFFENCES, 2007, NSW LOCAL GOVERNMENT AREAS

NSW LGAs 2007	Murder*	Assault - domestic violence related	Assault - non-domestic violence related	Sexual assault	Indecent assault, act of indecency and other sexual offences	Robbery without a weapon	Robbery with a firearm	Robbery with a weapon not a firearm	Break and enter - dwelling	Break and enter - non-dwelling	Motor vehicle theft	Steal from motor vehicle	Steal from retail store	Steal from dwelling	Steal from person	Fraud	Malicious damage to property
Albury	1	278	494	41	74	19	1	5	522	427	287	565	162	294	53	262	1,184
Armistead Dumaresq	1	129	245	36	24	10	0	0	200	197	45	142	70	144	18	43	544
Ashfield	0	110	160	12	18	62	6	23	335	61	159	432	94	131	59	198	413
Auburn	1	206	405	46	41	133	22	65	559	239	563	899	193	97	191	369	801
Ballina	1	182	326	26	39	20	1	6	302	217	86	287	79	216	37	171	659
Bairnald	0	17	36	1	6	0	0	0	28	25	6	43	6	19	3	6	49
Bankstown	5	651	874	55	53	126	48	139	1,150	429	1,222	1,583	365	294	197	1,640	1,988
Bathurst Regional	0	194	316	46	37	17	0	4	322	161	119	345	101	188	25	126	778
Baulkham Hills	3	339	360	32	47	29	4	19	733	228	349	1,157	285	252	118	567	1,349
Bega Valley	0	92	173	21	16	2	0	1	95	260	50	142	38	113	7	69	420
Bellingen	0	36	58	5	10	0	0	0	35	51	21	43	7	49	2	12	140
Berrigan	0	13	24	2	3	0	0	0	36	52	18	18	9	43	2	7	103
Blacktown	4	1,783	2,193	182	230	315	19	107	2,548	620	1,645	2,824	926	935	379	2,236	5,047
Bland	0	26	37	7	11	0	0	0	23	38	7	28	4	28	1	33	93
Blayney	0	29	20	12	6	0	0	0	16	15	4	38	2	27	0	8	109
Blue Mountains	0	254	331	38	46	21	0	10	355	230	124	319	85	258	43	192	1,596
Bogan	1	11	45	3	6	0	0	0	12	9	4	16	3	11	0	14	57
Bombala	0	8	14	2	2	0	0	0	10	7	0	4	0	5	0	1	19
Boorowa	0	5	7	1	10	0	0	0	6	4	2	8	0	9	0	5	30
Botany Bay	1	166	266	13	25	50	11	19	278	113	296	537	84	115	154	323	633
Bourke	0	118	88	17	9	1	0	3	85	29	38	49	35	42	7	7	230
Brewarrina	0	73	72	4	6	0	0	0	52	19	17	19	2	17	3	4	71
Broken Hill	0	162	184	21	20	1	0	0	298	151	68	169	22	147	11	46	570
Burwood	0	78	181	11	17	63	5	25	319	74	181	445	296	134	194	336	355
Byron	0	98	367	31	30	9	0	4	181	148	94	274	97	224	106	180	498
Cabonne	0	39	60	6	3	4	0	0	60	43	18	48	11	51	4	10	204
Camden	0	119	193	18	23	18	2	8	189	111	125	260	82	145	14	170	704
Campbelltown	4	1,122	1,546	117	156	165	19	59	1,453	469	811	1,413	542	541	216	592	3,458
Canada Bay	0	92	139	18	18	36	13	24	493	126	285	883	55	149	62	309	580
Canterbury	0	357	501	40	56	159	19	88	730	165	771	816	188	188	118	591	1,204
Carrathool	1	14	11	2	2	0	0	0	13	12	7	19	1	10	0	10	46
Central Darling	0	102	57	7	4	1	0	0	30	14	10	5	0	3	2	6	73
Cessnock	0	269	354	41	30	7	0	9	326	278	226	259	88	246	24	143	836
Clarence Valley	0	169	396	42	40	8	2	1	391	365	155	350	111	284	22	104	946
Cobar	0	41	54	10	12	1	0	0	18	32	9	39	6	38	2	24	144
Coffs Harbour	2	273	504	72	72	19	2	7	390	481	228	720	176	330	73	213	1,309
Conargo	0	5	8	0	5	0	0	0	9	5	4	7	3	9	0	3	29
Coolamon	0	6	7	1	1	0	1	0	9	9	3	5	0	9	0	9	26
Cooma-Monaro	0	32	75	9	6	0	0	0	49	28	15	28	12	51	2	31	180
Coonamble	0	45	61	4	6	1	0	0	69	45	12	38	10	34	4	11	163
Cootamundra	0	37	59	5	9	2	0	1	37	26	11	33	12	44	8	11	162
Corowa Shire	0	31	55	13	7	0	0	0	50	23	17	28	10	51	5	13	127
Cowra	0	60	83	11	23	3	0	1	146	78	23	48	26	73	1	25	283
Deniliquin	0	32	57	9	13	0	0	0	55	25	3	27	3	38	1	18	176
Dubbo	0	329	461	34	60	24	0	10	520	179	188	388	157	249	40	172	1,089
Dungog	0	32	17	6	4	0	0	0	31	27	8	32	2	16	0	9	93
Eurobodalla	0	134	298	35	42	8	1	2	282	209	129	273	66	191	19	87	624
Fairfield	4	748	928	65	74	143	38	85	1,459	418	838	1,395	466	315	205	1,042	1,868
Forbes	0	89	71	11	10	2	1	0	77	66	25	104	7	70	4	20	254
Gilgandra	0	38	65	7	36	1	0	0	24	31	10	17	9	27	2	31	116
Glen Innes Severn	2	40	57	12	8	0	0	0	49	30	9	28	22	37	2	16	194
Gloucester	0	15	24	4	4	0	0	0	9	18	3	10	2	21	1	3	49
Gosford	0	570	1,049	93	106	49	3	19	826	507	473	1,074	522	537	194	379	2,825
Goulburn Mulwaree	0	138	224	25	20	5	0	5	181	102	61	133	62	101	13	68	624
Great Lakes	0	217	259	19	27	13	2	4	433	199	149	232	74	157	30	126	634
Greater Hume Shire	1	26	27	11	4	0	0	0	45	33	19	22	10	32	4	25	86
Greater Taree	0	300	395	42	59	16	3	4	405	251	186	234	114	254	26	138	842
Griffith	1	156	255	25	34	2	0	4	230	93	68	151	78	98	13	108	669
Gundagai	0	23	10	1	4	2	0	0	10	6	3	12	6	7	1	26	30
Gunnedah	0	65	132	17	16	2	0	0	86	89	16	101	18	62	6	23	316
Guyra	0	23	37	9	0	0	0	0	22	12	7	11	3	13	1	6	80
Gwydir	0	16	37	3	1	0	0	0	21	21	8	13	7	16	2	11	62
Harden	0	18	17	1	3	0	0	1	18	16	2	12	2	13	0	6	43
Hastings	1	243	392	59	68	11	0	4	396	226	101	308	151	330	45	170	992
Hawkesbury	0	266	328	39	50	25	2	10	391	194	197	276	108	200	30	188	963
Hay	0	23	18	13	3	0	0	0	7	11	5	7	1	5	0	10	34
Holroyd	0	488	528	50	58	102	18	61	870	216	597	938	226	227	108	804	1,171
Hornsby	0	222	403	45	73	54	4	22	577	320	199	972	301	225	91	415	1,424
Hunters Hill	0	16	38	1	9	2	0	2	73	19	25	101	1	25	3	31	166
Hurstville	0	222	312	20	51	108	8	45	379	119	243	544	196	130	73	310	911
Inverell	0	117	167	24	16	2	0	0	76	44	10	68	60	122	8	36	278
Jerilderie	0	6	9	2	2	0	0	0	7	11	2	4	0	9	1	14	22
June	0	27	38	7	6	1	0	1	37	46	10	34	9	24	0	6	79
Kempsey	0	215	280	28	34	13	2	4	255	242	128	158	83	173	17	82	593
Kiama	0	28	80	8	12	4	1	1	69	55	43	109	13	36	7	27	240
Kogarah	0	134	149	9	30	42	5	30	292	69	212	367	107	65	48	274	570
Ku-ring-gai	0	80	132	13	26	25	6	18	607	175	71	526	40	205	51	162	695
Kyogle	0	44	72	12	13	0	0	0	58	34	13	31	8	52	1	18	119
Lachlan	0	74	58	12	12	1	0	0	60	65	14	38	7	41	2	12	201
Lake Macquarie	2	744	939	131	140	48	6	27	1,022	780	721	1,335	442	688	98	534	3,005

TABLE 2.3C: NUMBER OF RECORDED CRIMINAL INCIDENTS FOR MAJOR OFFENCES, 2007, NSW LOCAL GOVERNMENT AREAS

NSW LGAs 2007	Murder*	Assault - domestic violence related	Assault - non-domestic violence related	Sexual assault	Indecent assault, act of indecency and other sexual offences	Robbery without a weapon	Robbery with a firearm	Robbery with a weapon not a firearm	Break and enter - dwelling	Break and enter - non-dwelling	Motor vehicle theft	Steal from motor vehicle	Steal from retail store	Steal from dwelling	Steal from person	Fraud	Malicious damage to property
Lane Cove	0	30	56	4	12	5	1	2	199	88	70	340	18	60	14	108	277
Leeton	0	54	130	8	21	0	0	0	112	95	24	99	10	76	3	24	284
Leichhardt	1	113	329	12	28	38	15	28	420	144	341	850	120	194	92	296	724
Lismore	0	273	510	47	48	17	2	8	366	178	205	304	179	210	60	119	744
Lithgow	0	121	214	19	24	4	0	2	149	90	73	132	31	121	15	50	464
Liverpool	4	725	881	115	95	119	18	94	1,196	407	907	1,850	529	337	203	1,075	2,309
Liverpool Plains	0	48	79	6	10	2	0	0	12	27	2	12	9	20	1	9	98
Lockhart	0	8	7	1	2	0	0	0	8	11	3	0	2	10	0	8	31
Lord Howe Island	0	0	1	0	1	0	0	0	0	0	0	0	0	0	0	1	0
Maitland	2	316	401	50	57	24	0	16	431	427	325	767	155	338	56	241	1,082
Manly	0	79	298	24	31	21	2	4	200	103	93	281	76	153	128	220	679
Marrickville	1	366	525	44	76	109	17	94	883	238	579	1,649	212	330	149	615	1,398
Mid-Western Regional	1	126	152	21	27	3	0	1	98	100	35	117	53	105	4	43	405
Moree Plains	0	248	329	22	31	11	0	1	396	249	103	251	74	118	20	69	588
Mosman	0	36	49	1	17	5	0	1	164	51	80	244	23	57	16	69	253
Murray	0	15	17	4	3	0	0	2	19	26	12	26	3	26	2	12	83
Murrumbidgee	0	21	17	2	3	1	0	0	12	5	5	8	0	15	1	2	27
Muswellbrook	2	73	108	11	9	6	0	1	142	109	27	109	35	81	4	51	403
Nambucca	0	109	164	30	10	4	0	0	125	173	66	187	20	78	9	68	399
Narrabri	0	94	147	16	19	2	0	1	95	74	29	61	33	76	3	28	323
Narrandera	0	26	58	5	6	1	0	1	50	26	22	30	17	35	2	29	147
Narromine	1	42	80	13	10	1	0	0	44	19	21	38	17	41	1	22	145
Newcastle	7	750	1,639	120	172	133	8	58	1,712	1,174	948	1,963	480	755	296	733	3,356
North Sydney	0	94	270	10	27	26	4	10	510	256	183	730	72	160	119	292	639
Oberon	0	16	38	7	3	0	0	2	32	13	8	33	2	29	2	7	89
Orange	0	162	316	39	37	17	0	5	355	105	132	322	121	188	45	115	1,024
Palerang	0	39	38	4	4	2	0	0	53	35	34	53	4	38	3	20	118
Parkes	0	97	119	6	10	3	0	2	100	191	47	157	23	93	7	25	410
Parramatta	2	707	1,167	87	90	228	21	104	1,372	510	834	1,946	791	365	516	1,218	2,027
Penrith	3	951	1,501	119	150	162	9	67	1,093	511	884	1,471	630	577	253	909	3,221
Pittwater	0	69	169	18	19	7	1	2	278	125	98	331	49	146	43	166	636
Port Stephens	2	304	389	32	40	7	5	5	496	313	355	705	150	373	33	163	1,294
Queanbeyan	0	163	212	15	25	7	1	3	262	121	119	394	52	127	33	185	597
Randwick	1	423	798	40	69	147	15	67	1,048	234	727	1,072	310	371	222	673	1,633
Richmond Valley	0	194	292	38	36	3	0	0	180	144	87	174	31	142	10	58	440
Rockdale	0	263	271	25	51	78	21	66	533	145	473	796	126	130	80	560	969
Ryde	1	191	318	24	80	40	12	21	525	173	252	703	345	133	89	470	865
Shellharbour	0	242	376	36	25	19	2	11	399	239	253	434	119	200	35	184	1,068
Shoalhaven	0	508	730	62	73	24	1	9	660	428	336	613	128	402	49	152	1,914
Singleton	0	65	70	19	17	3	0	1	79	68	48	87	39	108	11	40	318
Snowy River	0	16	78	4	8	1	0	1	29	31	11	35	8	39	10	31	146
Strathfield	0	63	140	6	21	54	9	34	396	71	252	567	51	89	108	304	290
Sutherland Shire	4	520	933	70	88	79	5	30	884	334	483	1,181	389	364	171	672	2,933
Sydney	3	835	4,539	182	301	1,040	63	423	2,021	1,573	1,310	7,907	1,765	985	4,390	3,667	4,335
Tamworth Regional	0	247	473	66	50	18	2	8	536	263	94	488	136	241	39	149	1,295
Temora	0	22	38	3	9	2	0	1	26	43	6	22	4	31	2	8	85
Tenterfield	0	47	66	4	10	0	0	0	61	68	14	49	33	43	2	37	141
Tumbarumba	0	5	19	1	5	0	0	0	8	12	2	5	1	7	1	4	46
Tumut Shire	0	50	73	7	19	0	0	1	55	53	12	70	9	33	3	25	169
Tweed	0	262	386	41	58	16	2	6	357	320	237	513	210	284	37	302	1,032
Unincorporated Far West	0	6	7	1	3	1	0	0	10	3	5	7	4	10	1	2	29
Upper Hunter Shire	0	27	33	4	9	0	0	1	32	53	15	34	7	34	2	16	158
Upper Lachlan	0	17	19	3	0	1	1	0	13	14	5	10	2	13	0	15	88
Uralla	0	24	32	8	6	0	0	0	20	24	7	21	5	19	2	13	70
Urana	0	13	4	1	0	0	0	0	6	8	3	5	1	6	0	1	21
Wagga Wagga	0	293	517	75	79	16	1	5	511	269	175	526	254	369	82	157	1,386
Wakool	0	12	11	0	6	0	0	0	11	12	3	13	2	7	0	5	42
Walcha	0	10	12	4	3	1	0	0	6	13	2	3	1	11	0	5	33
Walgett	0	183	213	11	17	4	0	2	142	105	44	91	13	70	5	38	268
Warren	0	32	46	5	4	1	0	0	29	11	6	17	11	13	3	10	84
Warrangah	1	218	294	38	69	25	4	20	454	383	199	663	311	264	73	512	1,447
Warrumbungle Shire	0	59	74	18	16	0	0	0	54	77	14	32	14	56	1	18	144
Waverley	0	174	527	22	78	69	2	18	519	137	354	507	512	218	324	721	890
Weddin	0	10	20	4	5	0	0	0	6	5	2	5	1	3	0	4	49
Wellington	0	67	78	11	12	2	1	2	115	39	19	23	11	60	6	20	254
Wentworth	0	95	64	13	12	2	0	0	88	41	20	39	8	61	1	19	165
Willoughby	1	93	142	8	22	25	6	18	394	182	118	703	415	111	168	430	851
Wingecarribee	0	122	224	27	24	13	2	0	164	210	86	192	68	125	14	118	803
Wollondilly	0	130	174	19	22	7	2	2	150	119	98	106	40	120	13	93	542
Wollongong	4	736	1,399	121	100	109	9	48	1,083	675	640	1,541	685	710	261	820	3,436
Woollahra	1	76	179	19	20	41	7	22	484	129	260	659	101	223	135	294	632
Wyong	4	841	1,105	103	103	42	1	14	990	424	557	1,131	405	514	95	463	3,034
Yass Valley	0	42	78	6	12	1	1	0	47	52	17	44	17	58	7	34	283
Young	0	52	113	13	17	0	0	1	68	70	31	69	19	72	3	24	252
Prisons	0	13	664	24	22	1	0	1	0	0	3	2	0	0	0	7	82
<b>NSW</b>	<b>82</b>	<b>27,402</b>	<b>45,841</b>	<b>4,081</b>	<b>5,085</b>	<b>4,857</b>	<b>548</b>	<b>2,334</b>	<b>47,498</b>	<b>24,330</b>	<b>26,875</b>	<b>62,089</b>	<b>18,282</b>	<b>22,940</b>	<b>11,902</b>	<b>32,704</b>	<b>107,343</b>

\* Number of victims.

TABLE 2.3D: NUMBER OF RECORDED CRIMINAL INCIDENTS FOR MAJOR OFFENCES, 2006, NSW LOCAL GOVERNMENT AREAS

NSW LGAs 2006	Murder*	Assault - domestic violence related	Assault - non-domestic violence related	Sexual assault	Indecent assault, act of indecency and other sexual offences	Robbery without a weapon	Robbery with a firearm	Robbery with a weapon not a firearm	Break and enter - dwelling	Break and enter - non-dwelling	Motor vehicle theft	Steal from motor vehicle	Steal from retail store	Steal from dwelling	Steal from person	Fraud	Malicious damage to property
Albury	1	276	526	57	69	15	0	4	482	373	209	762	138	293	53	259	1,206
Armidale Dumaresq	0	108	192	21	30	7	0	2	326	187	42	184	63	127	12	59	497
Ashfield	0	120	153	14	27	44	10	32	297	85	171	336	114	101	66	177	472
Auburn	1	199	412	24	40	126	19	54	536	233	544	741	171	110	145	406	726
Ballina	0	180	275	28	30	10	0	5	236	254	79	230	68	205	34	123	595
Bairnald	0	29	26	1	6	0	0	0	13	19	6	24	1	19	2	4	34
Bankstown	3	626	823	76	75	185	37	134	1,207	510	1,487	1,636	505	350	190	1,533	1,994
Bathurst Regional	0	193	324	29	42	11	1	12	310	168	97	275	79	171	46	118	868
Baulkham Hills	3	303	466	33	51	41	2	15	767	340	382	841	248	250	90	641	1,336
Bega Valley	0	113	214	12	20	4	0	2	120	169	72	133	49	144	14	84	486
Bellingen	0	36	54	7	4	0	0	0	36	50	16	47	11	39	0	17	136
Berrigan	0	20	29	4	4	0	0	0	25	47	13	19	4	36	1	11	85
Blacktown	2	1,843	2,138	200	224	300	15	102	2,656	724	1,709	2,664	1,011	937	402	2,579	5,105
Bland	0	14	44	4	6	0	0	0	23	63	6	23	5	26	2	39	117
Blayney	0	21	23	4	6	0	0	0	28	35	10	19	2	25	0	15	148
Blue Mountains	0	216	332	30	54	27	2	18	373	365	102	378	109	282	55	229	1,485
Bogan	0	19	45	3	0	0	0	0	18	5	6	9	0	15	1	10	49
Bombala	0	6	13	1	3	0	0	0	4	9	0	2	2	5	0	3	26
Boorowa	0	4	9	2	1	0	0	0	11	3	4	7	0	10	0	3	18
Botany Bay	0	115	257	12	17	40	5	22	217	170	214	318	80	109	151	318	592
Bourke	1	129	136	22	20	4	0	1	93	48	67	44	53	62	3	14	345
Brewarrina	0	70	53	5	6	1	0	0	47	30	27	34	6	24	0	5	127
Broken Hill	0	174	215	33	20	3	0	3	207	91	52	154	39	167	11	54	501
Burwood	0	72	173	8	23	53	6	40	283	88	190	325	262	85	129	369	386
Byron	0	118	352	45	32	12	2	4	182	178	109	287	75	245	96	133	549
Cabonne	0	37	71	8	9	0	0	1	66	61	25	53	14	45	3	22	179
Camden	0	144	185	26	28	12	6	5	216	133	148	334	94	148	15	226	735
Campbelltown	7	1,200	1,481	138	142	141	17	90	1,503	512	1,029	1,385	573	577	190	666	3,690
Canada Bay	1	109	160	9	18	31	4	15	492	118	294	461	54	154	48	258	532
Canterbury	3	312	455	41	70	209	34	115	854	267	826	948	211	191	97	646	1,290
Carrathool	0	11	28	5	5	0	0	1	14	25	2	29	2	12	0	5	42
Central Darling	0	117	100	5	5	0	0	0	39	29	17	11	0	6	2	1	96
Cessnock	0	305	289	36	39	11	3	5	302	263	286	355	66	268	17	152	857
Clarence Valley	3	212	360	50	53	10	0	3	317	326	111	330	125	333	18	111	1,015
Cobar	0	28	46	5	10	0	0	0	29	12	14	34	2	17	0	38	130
Coffs Harbour	0	278	480	55	93	24	1	16	389	532	197	643	258	427	49	177	1,479
Conargo	0	9	10	0	1	1	0	0	8	11	2	4	0	8	1	4	46
Coolamon	0	13	17	2	2	0	0	0	9	19	7	14	3	12	0	4	42
Cooma-Monaro	0	29	65	4	6	0	0	0	41	18	10	27	18	50	1	55	176
Coonamble	0	72	98	1	10	0	0	1	62	80	31	52	8	28	1	13	153
Cootamundra	0	31	66	8	10	0	0	0	41	28	4	41	9	43	5	10	140
Corowa Shire	0	46	86	9	5	0	0	0	47	55	25	63	12	69	2	43	195
Cowra	0	48	97	10	40	1	0	2	100	89	17	48	39	79	5	34	341
Deniliquin	0	44	55	4	6	0	0	0	50	22	11	35	9	64	1	27	144
Dubbo	0	336	489	59	79	22	2	7	483	333	275	669	133	244	55	213	1,309
Dungog	0	32	32	4	3	0	0	0	29	32	14	17	3	19	1	10	46
Eurobodalla	0	131	326	38	72	8	0	3	277	164	81	282	112	194	12	94	688
Fairfield	5	685	923	85	101	194	45	124	1,368	446	984	1,448	506	272	240	1,124	2,047
Forbes	0	58	103	7	14	1	0	3	80	58	27	99	11	61	3	22	272
Gilgandra	0	48	37	6	10	0	0	0	37	31	16	35	8	37	1	36	122
Glen Innes Severn	0	53	53	10	13	2	0	0	67	28	11	24	20	41	0	23	133
Gloucester	0	19	17	7	1	0	0	0	5	12	4	6	1	26	0	3	77
Gosford	2	550	1,031	96	127	41	3	20	1,060	709	536	1,341	469	660	164	491	2,779
Goulburn Mulwaree	1	97	248	29	35	4	2	0	126	108	51	98	60	147	8	89	716
Great Lakes	3	201	276	19	33	13	0	4	409	214	219	328	68	201	22	169	642
Greater Hume Shire	0	25	34	3	6	0	0	0	19	42	6	23	3	19	3	21	81
Greater Taree	0	291	396	42	77	26	1	5	420	220	190	237	91	248	22	126	733
Griffith	0	145	213	14	16	10	0	3	266	115	70	155	98	146	10	68	549
Gundagai	0	16	21	1	4	0	0	0	9	4	4	18	1	11	2	23	36
Gunnedah	0	68	112	12	13	1	0	0	72	62	30	89	16	79	3	42	292
Guyra	0	23	37	8	4	1	0	0	34	32	11	10	1	14	3	4	84
Gwydir	0	17	35	5	4	0	0	0	22	19	9	9	2	25	0	8	61
Harden	0	9	23	2	3	0	0	0	15	14	7	6	1	19	0	6	54
Hastings	1	239	384	46	58	16	2	6	351	300	124	352	132	367	63	173	1,077
Hawkesbury	1	270	302	51	42	18	3	7	356	188	266	363	95	207	27	206	970
Hay	0	15	17	5	5	0	0	0	12	18	6	9	0	9	1	13	29
Holroyd	2	425	531	39	59	93	16	76	884	291	633	873	215	232	132	727	1,127
Hornsby	0	228	401	36	57	43	3	23	592	423	213	979	257	275	102	451	1,384
Hunters Hill	0	9	32	3	12	3	0	3	73	27	22	68	3	23	13	40	104
Hurstville	2	237	305	23	34	75	12	42	376	155	273	382	195	114	92	305	958
Inverell	0	116	157	18	34	2	0	2	74	47	17	74	58	97	5	44	330
Jerilderie	0	4	8	0	1	0	0	0	4	18	2	2	2	8	0	15	12
Junee	0	31	35	7	2	1	0	0	20	22	6	22	4	15	4	5	73
Kempsey	1	210	241	23	35	13	0	4	251	212	140	180	86	165	17	98	616
Kiama	0	32	82	6	12	0	0	0	78	47	40	121	13	48	7	22	212
Kogarah	0	159	193	21	35	38	3	17	280	93	176	282	92	77	39	305	569
Ku-ring-gai	0	84	115	12	23	21	1	22	488	195	102	434	40	199	52	214	772
Kyogle	1	42	84	11	12	2	2	2	46	53	22	16	15	36	2	18	137
Lachlan	0	73	81	4	14	1	0	1	52	46	18	58	10	31	2	16	157
Lake Macquarie	1	822	1,039	114	125	42	2	39	1,050	984	821	1,509	449	813	103	631	3,285

TABLE 2.3D: NUMBER OF RECORDED CRIMINAL INCIDENTS FOR MAJOR OFFENCES, 2006, NSW LOCAL GOVERNMENT AREAS

NSW LGAs 2006	Murder*	Assault - domestic violence related	Assault - non-domestic violence related	Sexual assault	Indecent assault, act of indecency and other sexual offences	Robbery without a weapon	Robbery with a firearm	Robbery with a weapon not a firearm	Break and enter - dwelling	Break and enter - non-dwelling	Motor vehicle theft	Steal from motor vehicle	Steal from retail store	Steal from dwelling	Steal from person	Fraud	Malicious damage to property
Lane Cove	0	26	63	4	6	8	1	3	151	99	82	156	27	77	22	155	309
Leeton	0	53	104	10	17	0	0	1	88	97	27	51	19	75	3	35	322
Leichhardt	0	126	340	17	39	38	8	22	418	183	364	869	106	188	93	264	852
Lismore	0	291	499	37	51	21	4	5	385	276	127	347	209	272	51	134	903
Lithgow	1	115	206	22	26	4	0	1	116	80	49	64	34	125	15	42	422
Liverpool	4	681	871	96	97	131	27	68	1,331	488	948	1,486	615	358	190	1,160	2,374
Liverpool Plains	0	44	55	6	7	0	0	0	19	38	6	16	8	22	1	14	99
Lockhart	0	0	7	2	3	0	0	0	7	11	3	4	2	14	0	1	31
Lord Howe Island	0	1	0	0	0	0	0	0	0	0	2	0	0	0	0	0	3
Maitland	1	304	376	50	54	22	1	6	365	405	292	609	132	334	48	298	1,125
Manly	0	76	279	19	25	18	1	8	314	77	81	228	69	175	121	133	564
Marrickville	1	405	547	28	86	163	22	81	803	325	587	1,305	214	324	156	687	1,310
Mid-Western Regional	0	68	140	17	26	3	0	0	88	81	50	66	29	99	9	27	349
Moree Plains	0	210	291	18	22	12	0	1	288	217	106	217	55	96	19	53	602
Mosman	0	29	50	4	7	8	4	3	163	48	57	198	27	84	11	58	257
Murray	0	25	30	4	6	0	0	0	25	18	11	27	3	39	1	10	108
Murrumbidgee	0	17	13	2	4	2	0	0	10	28	2	13	0	7	2	10	40
Muswellbrook	0	79	118	16	21	2	0	4	162	124	40	113	38	83	14	29	489
Nambucca	0	80	161	16	11	4	2	3	115	125	49	74	22	66	16	83	322
Narrabri	0	106	146	12	16	5	0	0	68	104	31	78	21	85	4	34	297
Narrandera	0	46	68	8	12	3	0	1	103	42	14	49	19	36	0	35	155
Narromine	0	38	81	5	12	1	0	0	62	48	25	38	10	31	5	22	127
Newcastle	2	728	1,583	105	169	121	10	52	1,629	1,290	892	2,054	444	886	324	748	3,314
North Sydney	0	91	240	11	22	22	3	15	542	321	140	491	82	156	119	386	606
Oberon	0	9	33	3	4	0	0	0	34	11	12	24	8	23	4	13	92
Orange	1	163	341	35	36	11	1	7	462	230	127	366	116	234	41	89	978
Palerang	0	41	57	10	3	2	0	1	38	40	28	47	8	31	3	14	125
Parkes	0	100	133	14	26	2	0	0	79	82	34	88	20	96	2	33	373
Parramatta	6	689	1,199	81	95	231	22	133	1,376	580	1,008	1,614	778	384	434	1,324	1,992
Penrith	1	839	1,429	118	131	153	7	53	1,415	500	941	1,697	598	561	205	1,154	3,212
Pittwater	0	99	159	15	34	13	1	1	440	168	134	347	56	136	43	188	701
Port Stephens	0	269	369	25	41	7	1	15	507	315	273	677	101	348	47	177	1,293
Queanbeyan	0	154	243	43	25	12	0	7	245	125	112	330	67	143	18	127	630
Randwick	3	341	798	44	77	132	13	71	1,022	262	556	885	301	354	275	648	1,788
Richmond Valley	1	207	251	22	34	10	2	0	195	134	72	124	37	172	14	47	478
Rockdale	1	234	234	33	52	68	21	35	573	213	435	575	119	132	74	548	953
Ryde	0	140	291	26	68	72	9	39	436	213	269	615	283	144	123	550	896
Shellharbour	0	261	376	48	38	22	3	18	456	249	331	460	162	177	31	243	1,124
Shoalhaven	5	505	694	71	84	26	1	11	674	380	312	676	195	404	43	171	1,855
Singleton	0	65	92	24	22	0	0	0	78	64	66	125	39	132	6	43	348
Snowy River	0	22	74	6	8	2	0	0	24	35	8	26	5	24	7	30	157
Strathfield	0	47	121	6	21	57	14	34	385	70	199	365	55	77	84	241	293
Sutherland Shire	2	443	863	51	102	65	9	23	991	394	533	1,186	479	385	200	644	2,922
Sydney	5	880	4,371	185	232	1,030	74	467	1,708	1,692	1,357	6,963	1,595	1,073	4,532	3,913	4,264
Tamworth Regional	1	284	489	67	78	27	0	4	366	188	94	323	158	244	38	159	1,385
Temora	0	14	43	4	6	0	0	1	13	43	5	23	7	20	1	4	99
Tenterfield	1	43	90	6	13	0	0	0	43	54	14	56	26	37	5	15	151
Tumbarumba	0	7	23	1	3	0	0	0	10	17	4	14	0	14	1	5	28
Tumut Shire	1	88	92	7	16	1	0	1	52	52	31	81	6	71	4	22	202
Tweed	1	280	402	45	62	13	3	7	367	335	267	587	234	338	61	254	914
Unincorporated Far West	0	8	9	3	2	0	0	0	6	4	3	9	1	7	0	2	38
Upper Hunter Shire	0	11	45	6	9	0	2	1	32	41	19	36	4	48	1	24	143
Upper Lachlan	0	16	29	7	14	0	0	1	17	17	5	11	3	19	0	9	76
Uralla	1	35	46	8	6	2	0	0	38	27	9	33	6	20	1	13	108
Urana	0	5	8	3	0	0	0	0	9	6	4	7	0	12	0	4	23
Wagga Wagga	2	230	473	56	81	21	1	6	585	310	183	683	173	372	67	169	1,441
Wakool	0	8	11	3	6	0	0	0	20	16	11	10	1	14	0	12	50
Walcha	0	12	12	2	0	0	0	0	3	9	2	5	0	9	1	1	29
Walgett	0	246	238	23	24	3	0	0	99	91	33	63	13	69	7	30	378
Warren	0	41	40	1	5	0	0	0	20	12	5	20	16	22	3	1	71
Warringah	1	215	296	35	66	41	3	15	523	291	220	677	280	238	77	457	1,489
Warrumbungle Shire	0	37	60	13	18	1	0	1	57	50	14	31	10	57	3	28	130
Waverley	2	147	542	22	78	76	6	27	484	181	395	576	606	279	365	656	1,085
Weddin	0	18	22	3	2	1	0	1	23	4	5	7	2	22	1	3	47
Wellington	0	72	95	10	14	4	0	4	87	57	20	30	16	40	4	26	276
Wentworth	0	69	61	8	11	1	0	2	116	32	29	29	7	49	2	55	107
Willoughby	0	82	180	15	28	23	4	16	378	230	140	499	341	116	138	438	782
Wingecarribee	1	124	191	28	32	6	2	0	225	214	121	283	69	162	18	111	897
Wollondilly	0	148	161	26	31	5	4	3	149	92	131	193	29	114	16	100	634
Wollongong	2	761	1,464	130	134	118	4	66	1,555	955	864	1,405	554	732	313	912	3,466
Woollahra	2	70	189	9	25	36	6	29	411	151	272	652	97	210	139	284	711
Wyong	2	770	1,048	119	169	37	5	18	983	660	613	1,055	337	653	105	676	2,658
Yass Valley	0	35	76	9	12	2	0	0	51	67	19	55	19	53	7	52	203
Young	0	66	100	10	22	6	0	0	65	57	20	64	26	63	7	34	265
Prisons	1	53	722	23	24	0	0	0	0	2	1	8	0	0	0	4	117
<b>NSW</b>	<b>97</b>	<b>26,991</b>	<b>45,499</b>	<b>4,028</b>	<b>5,400</b>	<b>4,941</b>	<b>562</b>	<b>2,509</b>	<b>48,038</b>	<b>27,153</b>	<b>28,441</b>	<b>58,245</b>	<b>18,110</b>	<b>24,313</b>	<b>11,963</b>	<b>34,725</b>	<b>109,155</b>

\* Number of victims.



---

**SECTION 3:**  
**MONTHLY NUMBERS OF**  
**RECORDED CRIMINAL INCIDENTS**  
**2005, 2006 AND 2007**  
**NEW SOUTH WALES**

---

TABLE 3.1: MONTHLY NUMBER OF RECORDED CRIMINAL INCIDENTS FOR ALL OFFENCES, 2005, NEW SOUTH WALES

Type of offence	Recorded criminal incidents												Rate per 100,000 population	
	Jan	Feb	Mar	Apr	May	Jun	Jul	Aug	Sep	Oct	Nov	Dec		Total 2005
<b>Homicide</b>														
Murder*	10	9	6	9	3	7	9	3	4	9	8	4	81	1.2
Attempted murder	2	1	6	5	5	5	2	5	1	8	7	4	51	0.8
Murder accessory, conspiracy	2	0	0	0	1	2	0	1	1	5	1	0	13	0.2
Manslaughter *	2	0	0	0	0	0	0	0	1	0	0	0	3	0.0
Driving causing death	18	10	12	18	25	16	17	19	25	14	16	20	210	3.1
<b>Assault</b>														
Domestic violence related	2,640	2,182	2,328	2,024	1,982	1,925	2,056	2,018	2,076	2,265	2,231	2,613	26,340	389.1
Non-domestic violence related	4,027	3,723	4,112	3,687	3,584	3,401	3,591	3,502	3,523	3,836	4,074	4,318	45,378	670.4
<b>Sexual offences</b>														
Sexual assault	313	336	408	302	386	349	276	395	326	313	385	320	4,109	60.7
Indecent assault, act of indecency	286	327	334	242	282	287	258	305	311	336	335	271	3,574	52.8
Other sexual offences	200	219	207	162	167	145	116	138	165	185	148	165	2,017	29.8
<b>Abduction and kidnapping</b>	31	26	29	30	32	25	26	43	31	41	49	37	400	5.9
<b>Robbery</b>														
Robbery without a weapon	397	350	497	455	364	378	377	410	452	493	495	484	5,152	76.1
Robbery with a firearm	31	28	59	51	38	24	48	46	49	37	45	34	490	7.2
Robbery with a weapon not a firearm	189	186	243	236	208	259	207	212	261	223	214	230	2,668	39.4
<b>Blackmail and extortion</b>	4	9	6	5	3	2	1	6	14	2	5	3	60	0.9
<b>Harassment, threatening behaviour and private nuisance</b>	1,944	1,742	1,967	1,820	1,707	1,604	1,663	1,864	1,893	1,891	1,882	2,019	21,996	325.0
<b>Other offences against the person</b>	143	135	141	125	120	125	114	134	103	136	111	128	1,515	22.4

Number of monthly recorded criminal incidents

TABLE 3.1: MONTHLY NUMBER OF RECORDED CRIMINAL INCIDENTS FOR ALL OFFENCES, 2005, NEW SOUTH WALES

Type of offence	Recorded criminal incidents												Rate per 100,000 population	
	Jan	Feb	Mar	Apr	May	Jun	Jul	Aug	Sep	Oct	Nov	Dec		No.
<b>Theft</b>														
Break and enter - dwelling	4,559	4,126	4,507	4,129	4,242	3,896	4,104	3,921	3,930	4,274	4,081	4,166	49,935	737.7
Break and enter - non-dwelling	2,540	2,351	2,634	2,195	2,313	2,211	2,268	2,180	2,144	2,241	2,318	2,254	27,649	408.5
Receiving or handling stolen goods	661	567	618	544	557	504	537	541	527	613	461	513	6,643	98.1
Motor vehicle theft	2,665	2,356	2,646	2,534	2,579	2,396	2,468	2,226	2,267	2,358	2,382	2,294	29,171	431.0
Steal from motor vehicle	4,528	4,451	5,306	4,609	4,657	4,432	4,565	4,345	4,422	4,412	4,624	4,265	54,616	806.9
Steal from retail store	1,440	1,421	1,598	1,592	1,664	1,613	1,698	1,542	1,508	1,421	1,557	1,411	18,465	272.8
Steal from dwelling	2,436	2,044	2,074	2,141	2,071	1,871	1,999	1,942	2,058	2,274	2,078	2,161	25,149	371.5
Steal from person	1,275	952	1,144	951	976	1,019	983	995	1,041	1,128	1,032	1,126	12,622	186.5
Stock theft	62	58	51	51	46	59	46	67	57	53	61	43	654	9.7
Fraud	2,889	2,669	2,628	2,628	3,014	2,819	3,065	2,944	3,317	2,973	2,668	2,434	34,048	503.0
Other theft	4,112	3,608	3,948	3,805	3,764	3,630	3,475	3,399	3,476	3,557	3,536	3,799	44,109	651.6
<b>Arson</b>	572	456	525	503	525	480	554	561	516	618	589	625	6,524	96.4
<b>Malicious damage to property</b>	8,667	7,909	8,817	8,524	7,876	7,874	8,823	8,499	8,764	9,486	8,826	9,448	103,513	1,529.2
<b>Drug offences</b>														
Possession and/or use of cocaine	26	25	25	14	28	19	22	17	9	13	18	17	233	3.4
Possession and/or use of narcotics	89	85	84	75	77	64	87	65	75	61	59	38	859	12.7
Possession and/or use of cannabis	1,135	844	892	951	1,163	987	1,033	1,013	971	979	847	839	11,654	172.2
Possession and/or use of amphetamines	206	141	153	147	187	176	173	185	160	175	174	181	2,058	30.4
Possession and/or use of ecstasy	121	55	46	55	44	61	73	84	77	51	40	68	775	11.4
Possession and/or use of other drugs	90	70	81	90	98	89	82	86	77	70	75	92	1,000	14.8

... continued over page

\* For murder and manslaughter only, the data are counts of recorded victims, not criminal incidents.

TABLE 3.1: MONTHLY NUMBER OF RECORDED CRIMINAL INCIDENTS FOR ALL OFFENCES, 2005, NEW SOUTH WALES

Type of offence	Recorded criminal incidents												Rate per 100,000 population	
	Jan	Feb	Mar	Apr	May	Jun	Jul	Aug	Sep	Oct	Nov	Dec		No. population
<b>Drug offences - continued</b>														
Dealing, trafficking in cocaine	11	15	15	5	18	3	8	7	9	1	6	1	99	1.5
Dealing, trafficking in narcotics	32	58	46	27	24	26	32	32	28	27	26	18	376	5.6
Dealing, trafficking in cannabis	31	38	45	65	66	63	79	65	26	47	49	47	621	9.2
Dealing, trafficking in amphetamines	39	21	32	49	47	105	59	44	128	59	67	104	754	11.1
Dealing, trafficking in ecstasy	52	14	24	24	26	64	59	68	30	17	40	38	456	6.7
Dealing, trafficking in other drugs	10	5	6	4	4	13	7	6	13	4	8	5	85	1.3
Cultivating cannabis	147	179	202	95	77	75	35	54	66	81	109	126	1,246	18.4
Manufacture drug	5	4	13	5	12	1	6	2	6	3	5	4	66	1.0
Importing drugs	1	9	4	1	6	1	5	2	3	2	1	5	40	0.6
Other drug offences	257	206	217	247	228	206	238	252	192	234	242	194	2,713	40.1
<b>Prohibited and regulated weapons offences</b>	730	676	606	614	599	629	602	692	631	721	649	754	7,903	116.8
<b>Disorderly conduct</b>														
Trespass	829	636	791	732	663	622	660	658	745	750	691	784	8,561	126.5
Offensive conduct	622	500	451	482	438	423	520	441	490	541	480	560	5,948	87.9
Offensive language	595	513	552	486	542	473	456	408	444	513	439	501	5,922	87.5
Criminal intent	159	132	154	129	148	118	126	110	126	152	130	146	1,630	24.1
<b>Betting and gaming offences</b>	8	11	6	18	9	9	19	12	7	9	2	22	132	2.0
<b>Liquor offences</b>	1,296	987	1,132	1,249	925	1,044	1,091	930	924	1,365	1,108	1,449	13,500	199.4
<b>Pornography offences</b>	10	9	19	6	9	6	6	11	14	10	10	4	114	1.7
<b>Prostitution offences</b>	29	22	28	31	32	30	18	11	23	11	11	7	253	3.7

Number of monthly recorded criminal incidents

TABLE 3.1: MONTHLY NUMBER OF RECORDED CRIMINAL INCIDENTS FOR ALL OFFENCES, 2005, NEW SOUTH WALES

Type of offence	Recorded criminal incidents												Rate per 100,000 population	
	Jan	Feb	Mar	Apr	May	Jun	Jul	Aug	Sep	Oct	Nov	Dec		No.
<b>Against justice procedures</b>														
Escape custody	19	16	31	31	22	12	24	20	12	23	21	18	249	3.7
Breach Apprehended Violence Order	1,079	1,030	1,054	964	957	904	969	962	914	989	977	1,063	11,862	175.2
Breach bail conditions	1,143	952	1,011	937	984	884	886	881	850	1,133	947	1,058	11,666	172.3
Fail to appear	56	79	61	42	53	51	45	50	64	37	55	34	627	9.3
Resist or hinder officer	656	552	523	532	508	507	519	454	471	610	522	571	6,425	94.9
Other offences against justice procedures	56	81	73	65	73	40	50	45	33	62	49	33	660	9.8
<b>Driving offences</b>														
Drive under influence of alcohol or drugs	132	96	100	118	102	80	90	99	94	101	117	96	1,225	18.1
Dangerous or negligent driving	2,424	2,298	2,578	2,366	2,459	2,714	2,339	2,226	2,393	2,335	2,457	2,375	28,964	427.9
Driving licence cancelled or suspended	1,540	1,206	1,459	1,284	1,332	1,282	1,333	1,399	1,203	1,346	1,318	1,325	16,027	236.8
Driving without a licence	3,017	2,238	2,868	2,561	2,572	2,589	2,419	2,461	2,360	2,688	2,531	2,746	31,050	458.7
Other driving licence offences	5,784	3,896	5,625	4,662	4,531	4,666	4,456	4,637	4,362	4,532	4,176	4,369	55,696	822.8
Registration offences	6,605	3,956	4,988	4,590	4,826	4,875	4,479	4,943	4,462	5,338	5,473	7,262	61,797	912.9
Roadworthiness offences	99	77	114	104	99	154	120	107	62	78	62	60	1,136	16.8
Exceeding the prescribed content of alcohol limit	2,449	1,880	2,751	2,343	2,521	2,142	2,136	2,007	1,989	2,363	2,297	2,188	27,066	399.9
Exceeding legal speed limit	20,871	15,331	19,251	17,780	17,133	17,986	18,022	19,211	17,683	17,818	13,886	17,882	212,854	3,144.6
Parking offences	150	119	85	80	136	130	179	154	139	102	96	126	1,496	22.10
Other regulatory driving offences	15,704	14,425	15,517	16,119	15,519	16,633	14,710	16,862	15,409	14,507	14,282	16,137	185,824	2,745.2
<b>Transport regulatory offences</b>	3,049	2,524	2,503	2,881	3,955	3,550	3,118	3,214	3,202	3,159	2,942	2,803	36,900	545.1
<b>Other offences</b>	1,780	1,421	1,482	1,437	1,383	1,316	1,506	1,400	1,381	1,591	1,322	1,551	17,570	259.6

Number of monthly recorded criminal incidents

TABLE 3.2: MONTHLY NUMBER OF RECORDED CRIMINAL INCIDENTS FOR ALL OFFENCES, 2006, NEW SOUTH WALES

Type of offence	Recorded criminal incidents												Total 2006 Rate per 100,000 No. population	
	Jan	Feb	Mar	Apr	May	Jun	Jul	Aug	Sep	Oct	Nov	Dec		
<b>Homicide</b>														
Murder*	21	5	10	6	7	3	7	10	6	7	5	10	97	1.4
Attempted murder	4	6	4	3	7	4	8	5	8	4	3	9	65	1.0
Murder accessory, conspiracy	1	0	1	1	0	1	1	0	1	0	0	2	8	0.1
Manslaughter *	1	0	0	1	0	0	0	2	0	0	0	1	5	0.1
Driving causing death	24	8	19	15	18	21	11	7	12	30	26	16	207	3.0
<b>Assault</b>														
Domestic violence related	2,678	2,366	2,410	2,004	2,034	1,992	2,054	2,045	2,132	2,308	2,303	2,665	26,991	395.3
Non-domestic violence related	3,946	3,973	4,264	3,632	3,399	3,285	3,517	3,593	3,699	3,852	4,057	4,282	45,499	666.4
<b>Sexual offences</b>														
Sexual assault	301	315	413	296	349	307	319	348	330	340	365	345	4,028	59.0
Indecent assault, act of indecency	288	310	341	266	317	273	256	322	275	265	322	272	3,507	51.4
Other sexual offences	155	186	198	156	129	138	116	160	152	181	159	163	1,893	27.7
<b>Abduction and kidnapping</b>	36	33	41	27	32	33	26	35	33	35	41	30	402	5.9
<b>Robbery</b>														
Robbery without a weapon	429	430	449	412	374	410	406	382	397	416	404	432	4,941	72.4
Robbery with a firearm	62	49	70	44	62	50	40	39	28	34	50	34	562	8.2
Robbery with a weapon not a firearm	248	210	247	180	201	222	212	241	181	181	218	168	2,509	36.7
<b>Blackmail and extortion</b>	1	13	4	4	5	5	4	10	5	9	8	4	72	1.1
<b>Harassment, threatening behaviour and private nuisance</b>	1,980	1,870	2,119	1,644	1,746	1,824	1,940	2,002	1,982	1,984	2,017	1,935	23,043	337.5
<b>Other offences against the person</b>	139	122	183	121	134	115	125	160	127	131	175	160	1,692	24.8

Number of monthly recorded criminal incidents

TABLE 3.2: MONTHLY NUMBER OF RECORDED CRIMINAL INCIDENTS FOR ALL OFFENCES, 2006, NEW SOUTH WALES

Type of offence	Recorded criminal incidents												Rate per 100,000 population	
	Jan	Feb	Mar	Apr	May	Jun	Jul	Aug	Sep	Oct	Nov	Dec		No.
<b>Theft</b>														
Break and enter - dwelling	4,519	3,912	4,369	4,004	3,856	4,188	3,849	3,661	3,874	3,980	4,023	3,803	48,038	703.6
Break and enter - non-dwelling	2,600	2,338	2,359	2,300	2,301	2,174	2,409	2,065	2,124	2,232	2,113	2,138	27,153	397.7
Receiving or handling stolen goods	532	501	597	502	565	504	480	489	479	486	432	449	6,016	88.1
Motor vehicle theft	2,562	2,281	2,533	2,432	2,650	2,408	2,377	2,291	2,210	2,308	2,246	2,143	28,441	416.6
Steal from motor vehicle	4,801	4,291	4,911	4,805	5,436	5,242	5,353	4,622	4,765	4,818	4,618	4,583	58,245	853.1
Steal from retail store	1,437	1,417	1,595	1,398	1,621	1,609	1,475	1,525	1,412	1,478	1,503	1,640	18,110	265.2
Steal from dwelling	2,348	1,991	1,977	1,858	1,812	1,813	2,023	1,909	1,923	2,218	2,171	2,270	24,313	356.1
Steal from person	1,167	880	1,136	1,057	975	1,000	985	907	901	954	937	1,064	11,963	175.2
Stock theft	43	57	58	48	46	57	39	52	57	50	40	49	596	8.7
Fraud	2,832	2,686	3,001	2,739	3,392	3,190	3,118	3,135	2,764	2,735	2,819	2,314	34,725	508.6
Other theft	3,892	3,677	3,667	3,453	3,592	3,306	3,503	3,441	3,317	3,661	3,617	3,360	42,486	622.3
<b>Arson</b>	558	518	550	618	667	562	698	741	693	829	698	651	7,783	114.0
<b>Malicious damage to property</b>	9,198	8,125	8,662	8,600	8,567	8,364	9,381	9,238	9,351	10,537	9,495	9,637	109,155	1,598.7
<b>Drug offences</b>														
Possession and/or use of cocaine	19	19	16	21	23	20	37	33	30	29	38	32	317	4.6
Possession and/or use of narcotics	41	48	60	38	73	51	39	48	40	51	51	59	599	8.8
Possession and/or use of cannabis	995	862	949	999	1,246	1,075	1,142	1,147	1,020	841	849	985	12,110	177.4
Possession and/or use of amphetamines	155	145	207	211	186	187	222	229	210	215	206	198	2,371	34.7
Possession and/or use of ecstasy	94	79	33	68	42	71	79	67	120	78	74	98	903	13.2
Possession and/or use of other drugs	77	79	96	87	100	89	106	92	118	89	84	123	1,140	16.7

... Continued over page

\* For murder and manslaughter only, the data are counts of recorded victims, not criminal incidents.

TABLE 3.2: MONTHLY NUMBER OF RECORDED CRIMINAL INCIDENTS FOR ALL OFFENCES, 2006, NEW SOUTH WALES

Type of offence	Recorded criminal incidents												Total 2006 Rate per 100,000 No. population	
	Jan	Feb	Mar	Apr	May	Jun	Jul	Aug	Sep	Oct	Nov	Dec		
<b>Drug offences - continued</b>														
Dealing, trafficking in cocaine	12	3	6	20	6	19	21	14	21	11	9	4	146	2.1
Dealing, trafficking in narcotics	20	17	21	19	12	32	17	16	26	30	65	21	296	4.3
Dealing, trafficking in cannabis	24	52	40	39	54	54	43	65	27	33	35	52	518	7.6
Dealing, trafficking in amphetamines	28	48	53	71	47	90	90	80	63	67	39	84	760	11.1
Dealing, trafficking in ecstasy	32	57	19	33	13	40	26	50	36	25	26	48	405	5.9
Dealing, trafficking in other drugs	2	5	13	7	6	4	7	9	5	7	8	10	83	1.2
Cultivating cannabis	120	146	155	94	59	35	38	53	53	84	85	112	1,034	15.1
Manufacture drug	7	3	7	5	4	2	2	3	3	5	2	6	49	0.7
Importing drugs	5	1	3	1	3	1	2	2	1	5	1	1	26	0.4
Other drug offences	210	212	248	221	249	205	250	257	229	248	227	231	2,787	40.8
<b>Prohibited and regulated weapons offences</b>														
	613	599	724	681	632	679	637	746	650	753	658	735	8,107	118.7
<b>Disorderly conduct</b>														
Trespass	793	663	769	724	606	644	698	697	708	818	701	791	8,612	126.1
Offensive conduct	531	465	473	512	412	389	443	477	510	536	538	647	5,933	86.9
Offensive language	509	452	522	476	390	384	393	456	437	468	455	521	5,463	80.0
Criminal intent	137	124	161	134	129	130	140	112	116	98	128	133	1,542	22.6
<b>Betting and gaming offences</b>														
	14	9	27	42	42	48	9	44	20	14	88	36	393	5.8
<b>Liquor offences</b>														
	1,198	1,112	1,258	1,305	1,047	930	1,008	1,341	1,266	1,293	1,637	1,934	15,329	224.5
<b>Pornography offences</b>														
	2	3	8	6	6	16	9	16	8	12	12	8	106	1.6
<b>Prostitution offences</b>														
	8	12	26	12	27	21	10	6	14	13	18	19	186	2.7

Number of monthly recorded criminal incidents

TABLE 3.2: MONTHLY NUMBER OF RECORDED CRIMINAL INCIDENTS FOR ALL OFFENCES, 2006, NEW SOUTH WALES

Type of offence	Recorded criminal incidents												Rate per 100,000 population	
	Jan	Feb	Mar	Apr	May	Jun	Jul	Aug	Sep	Oct	Nov	Dec		No. population
<b>Against justice procedures</b>														
Escape custody	31	21	20	28	14	12	25	18	31	15	25	21	261	3.8
Breach Apprehended Violence Order	1,057	1,099	1,019	854	961	880	863	885	911	1,038	996	990	11,553	169.2
Breach bail conditions	1,158	1,184	1,300	1,141	1,199	1,104	1,216	1,154	1,266	1,355	1,303	1,741	15,121	221.5
Fail to appear	35	45	56	46	44	62	51	42	71	48	52	45	597	8.7
Resist or hinder officer	613	581	609	595	505	489	501	506	484	590	546	726	6,745	98.8
Other offences against justice procedures	43	49	55	42	47	55	46	60	61	78	67	66	669	9.8
<b>Driving offences</b>														
Drive under influence of alcohol or drugs	87	95	115	106	110	97	117	124	106	97	114	116	1,284	18.8
Dangerous or negligent driving	2,373	2,133	2,490	2,187	2,337	2,440	2,491	2,418	2,403	2,292	2,508	2,412	28,484	417.2
Driving licence cancelled or suspended	1,235	1,059	1,243	1,232	1,235	1,385	1,314	1,356	1,309	1,262	1,274	1,461	15,365	225.0
Driving without a licence	2,345	2,004	2,330	2,497	2,265	2,397	2,166	2,317	2,303	2,337	2,359	2,828	28,148	412.3
Other driving licence offences	4,123	3,285	4,236	4,875	3,829	4,163	3,922	4,367	4,457	4,541	4,535	6,162	52,495	768.9
Registration offences	6,011	4,336	5,023	5,794	5,482	5,570	4,885	5,259	5,232	5,273	5,462	7,498	65,825	964.1
Roadworthiness offences	72	62	73	112	90	100	71	72	75	63	70	98	958	14.0
Exceeding the prescribed content of alcohol limit	2,043	1,614	2,235	2,493	1,840	2,079	2,158	2,032	2,249	2,181	2,404	2,471	25,799	377.9
Exceeding legal speed limit	15,544	16,595	17,413	21,214	18,097	19,356	18,437	21,693	20,410	21,739	16,601	19,466	226,565	3,318.3
Parking offences	110	143	125	116	100	90	102	124	80	100	101	134	1,325	19.40
Other regulatory driving offences	13,730	13,969	16,215	14,473	16,744	15,101	14,286	16,717	15,869	15,918	15,527	17,897	186,446	2,730.7
<b>Transport regulatory offences</b>	2,811	2,616	3,471	2,805	2,788	2,835	3,257	3,331	3,028	2,482	2,516	2,636	34,576	506.4
<b>Other offences</b>	1,473	1,263	1,361	1,450	1,317	1,272	1,407	1,428	1,352	1,263	1,351	1,561	16,498	241.6

Number of monthly recorded criminal incidents

TABLE 3.3: MONTHLY NUMBER OF RECORDED CRIMINAL INCIDENTS FOR ALL OFFENCES, 2007, NEW SOUTH WALES

Type of offence	Recorded criminal incidents												Rate per 100,000 population	
	Jan	Feb	Mar	Apr	May	Jun	Jul	Aug	Sep	Oct	Nov	Dec		No. population
<b>Homicide</b>														
Murder*	10	7	8	1	4	6	5	7	8	9	11	6	82	1.2
Attempted murder	3	4	3	2	4	2	6	7	8	7	3	3	52	0.8
Murder accessory, conspiracy	0	1	0	0	1	1	0	1	0	0	0	0	4	0.1
Manslaughter *	0	4	2	0	0	0	0	0	0	0	0	2	8	0.1
Driving causing death	16	22	26	10	9	12	15	15	12	7	0	2	146	2.1
<b>Assault</b>														
Domestic violence related	2,771	2,440	2,612	2,250	2,247	2,046	2,034	2,032	2,079	2,150	2,309	2,432	27,402	401.3
Non-domestic violence related	3,887	3,768	4,525	3,779	3,751	3,292	3,473	3,755	3,883	3,795	3,867	4,066	45,841	671.4
<b>Sexual offences</b>														
Sexual assault	340	346	408	323	372	306	311	310	358	335	341	331	4,081	59.8
Indecent assault, act of indecency	396	296	336	264	298	250	203	233	273	296	276	221	3,342	48.9
Other sexual offences	157	148	168	134	145	131	99	132	173	164	156	136	1,743	25.5
<b>Abduction and kidnapping</b>														
	25	28	42	24	41	29	28	39	31	27	29	28	371	5.4
<b>Robbery</b>														
Robbery without a weapon	408	379	482	493	465	359	406	335	394	370	391	375	4,857	71.1
Robbery with a firearm	40	54	56	62	38	29	46	61	44	47	34	37	548	8.0
Robbery with a weapon not a firearm	178	182	269	245	215	186	179	200	191	209	143	137	2,334	34.2
<b>Blackmail and extortion</b>														
	1	3	8	6	5	4	8	6	4	8	4	3	60	0.9
<b>Harassment, threatening behaviour and private nuisance</b>														
	2,214	2,089	2,322	1,890	2,048	1,879	1,872	2,107	1,967	2,179	2,171	2,040	24,778	362.9
<b>Other offences against the person</b>														
	148	143	168	131	144	137	113	135	146	123	153	138	1,679	24.6

Number of monthly recorded criminal incidents

**TABLE 3.3: MONTHLY NUMBER OF RECORDED CRIMINAL INCIDENTS FOR ALL OFFENCES, 2007, NEW SOUTH WALES**

Type of offence	Recorded criminal incidents												Rate per 100,000 population	
	Jan	Feb	Mar	Apr	May	Jun	Jul	Aug	Sep	Oct	Nov	Dec		No. population
<b>Theft</b>														
Break and enter - dwelling	4,071	3,696	4,023	4,053	4,589	3,907	3,896	3,809	3,647	4,083	3,998	3,726	47,498	695.7
Break and enter - non-dwelling	2,292	2,067	2,123	2,269	1,931	2,010	1,991	1,687	1,874	2,100	2,054	1,932	24,330	356.3
Receiving or handling stolen goods	511	448	569	531	570	445	444	475	422	455	479	472	5,821	85.3
Motor vehicle theft	2,107	2,108	2,651	2,282	2,286	2,358	2,248	2,123	2,134	2,291	2,198	2,089	26,875	393.6
Steal from motor vehicle	5,274	4,845	4,987	4,869	5,218	5,314	5,466	5,237	5,302	5,455	5,300	4,822	62,089	909.4
Steal from retail store	1,407	1,413	1,776	1,445	1,740	1,577	1,574	1,546	1,377	1,455	1,461	1,511	18,282	267.8
Steal from dwelling	2,297	1,897	1,994	1,944	1,875	1,774	1,803	1,706	1,819	1,955	1,838	2,038	22,940	336.0
Steal from person	1,148	935	1,136	1,039	1,093	1,020	917	919	854	996	948	897	11,902	174.3
Stock theft	59	41	49	40	61	41	59	46	46	50	42	49	583	8.5
Fraud	2,915	2,261	2,841	2,565	2,882	2,646	2,589	2,776	2,658	2,870	2,911	2,790	32,704	479.0
Other theft	3,776	3,347	3,671	3,530	3,615	3,111	2,885	3,064	3,078	3,522	3,384	3,172	40,155	588.1
<b>Arson</b>	713	548	542	562	541	512	640	594	613	705	531	558	7,059	103.4
<b>Malicious damage to property</b>	9,926	8,386	8,933	8,903	8,592	7,880	8,960	8,602	9,209	9,915	9,062	8,975	107,343	1,572.2
<b>Drug offences</b>														
Possession and/or use of cocaine	33	33	36	18	21	22	19	27	19	19	28	27	302	4.4
Possession and/or use of narcotics	53	67	63	58	86	49	52	78	62	65	89	61	783	11.5
Possession and/or use of cannabis	938	864	1,063	1,089	1,300	1,054	987	1,071	858	981	993	1,054	12,252	179.4
Possession and/or use of amphetamines	219	232	298	221	251	209	224	241	180	170	208	220	2,673	39.1
Possession and/or use of ecstasy	92	71	139	74	71	80	68	89	85	77	85	129	1,060	15.5
Possession and/or use of other drugs	103	111	129	109	119	99	76	99	96	116	129	118	1,304	19.1

... Continued over page

\* For murder and manslaughter only, the data are counts of recorded victims, not criminal incidents.

TABLE 3.3: MONTHLY NUMBER OF RECORDED CRIMINAL INCIDENTS FOR ALL OFFENCES, 2007, NEW SOUTH WALES

Type of offence	Recorded criminal incidents												Rate per 100,000 population	
	Jan	Feb	Mar	Apr	May	Jun	Jul	Aug	Sep	Oct	Nov	Dec		No. population
<b>Drug offences - continued</b>														
Dealing, trafficking in cocaine	11	12	2	10	27	3	2	13	0	4	8	8	100	1.5
Dealing, trafficking in narcotics	19	11	27	11	27	8	3	15	8	4	29	16	178	2.6
Dealing, trafficking in cannabis	39	31	33	38	47	34	35	40	32	39	46	27	441	6.5
Dealing, trafficking in amphetamines	55	43	48	48	50	73	108	114	34	40	62	89	764	11.2
Dealing, trafficking in ecstasy	16	25	24	21	39	25	31	49	12	23	23	31	319	4.7
Dealing, trafficking in other drugs	4	9	4	2	8	6	6	9	7	10	4	8	77	1.1
Cultivating cannabis	145	141	174	72	86	54	38	43	40	69	104	116	1,082	15.8
Manufacture drug	2	2	2	8	7	2	2	4	4	1	7	4	45	0.7
Importing drugs	1	2	1	2	2	0	0	3	1	1	1	4	18	0.3
Other drug offences	264	218	235	220	259	224	226	265	203	256	250	253	2,873	42.1
<b>Prohibited and regulated weapons offences</b>	733	684	805	714	702	694	623	752	609	611	700	656	8,283	121.3
<b>Disorderly conduct</b>														
Trespass	930	801	816	749	750	669	732	694	732	772	772	825	9,242	135.4
Offensive conduct	598	469	603	612	480	516	487	508	624	526	692	910	7,025	102.9
Offensive language	562	400	517	456	437	359	401	460	438	457	524	717	5,728	83.9
Criminal intent	157	126	143	139	137	123	111	123	108	139	101	137	1,544	22.6
<b>Betting and gaming offences</b>	19	26	51	23	22	34	30	39	19	13	29	16	321	4.7
<b>Liquor offences</b>	1,400	1,162	1,777	1,534	1,307	1,466	1,527	1,324	1,255	1,222	1,712	2,180	17,866	261.7
<b>Pornography offences</b>	7	6	11	5	11	9	11	24	17	13	9	33	156	2.3
<b>Prostitution offences</b>	5	26	17	20	44	20	5	22	10	8	10	21	208	3.0

Number of monthly recorded criminal incidents

TABLE 3.3: MONTHLY NUMBER OF RECORDED CRIMINAL INCIDENTS FOR ALL OFFENCES, 2007, NEW SOUTH WALES

Type of offence	Recorded criminal incidents												Rate per 100,000 population	
	Jan	Feb	Mar	Apr	May	Jun	Jul	Aug	Sep	Oct	Nov	Dec		No. population
<b>Against justice procedures</b>														
Escape custody	15	13	22	18	25	12	18	20	17	19	22	20	221	3.2
Breach Apprehended Violence Order	1,069	1,058	1,064	997	998	778	853	1,049	919	973	972	1,109	11,839	173.4
Breach bail conditions	1,493	1,309	1,527	1,573	1,518	1,494	1,459	1,607	1,552	1,575	1,749	1,782	18,638	273.0
Fail to appear	57	40	41	51	67	79	48	73	55	73	66	70	720	10.5
Resist or hinder officer	718	529	705	624	561	489	547	554	597	570	567	898	7,359	107.8
Other offences against justice procedures	52	53	53	50	58	53	37	47	61	61	70	47	642	9.4
<b>Driving offences</b>														
Drive under influence of alcohol or drugs	105	84	109	113	111	91	113	108	76	53	54	58	1,075	15.7
Dangerous or negligent driving	2,122	2,259	2,627	2,355	2,387	2,392	2,174	2,397	2,184	2,115	2,259	1,940	27,211	398.5
Driving licence cancelled or suspended	1,415	1,038	1,233	1,315	1,342	1,266	1,344	1,363	1,373	1,289	1,524	1,603	16,105	235.9
Driving without a licence	2,381	1,649	2,386	2,430	2,379	2,155	2,137	2,257	2,190	2,134	2,334	2,849	27,281	399.6
Other driving licence offences	5,580	3,432	4,562	4,973	4,491	4,341	6,124	6,090	5,589	5,200	5,816	7,086	63,284	926.9
Registration offences	6,536	3,913	4,921	5,938	5,187	5,098	5,255	5,455	5,425	5,377	6,220	7,967	67,292	985.6
Roadworthiness offences	60	37	55	92	81	65	65	90	80	68	98	101	892	13.1
Exceeding the prescribed content of alcohol limit	2,082	1,625	2,311	2,403	1,978	2,095	2,007	2,122	2,142	1,996	2,398	2,600	25,759	377.3
Exceeding legal speed limit	17,520	13,022	16,029	19,984	18,660	15,490	17,588	18,455	17,934	17,608	15,664	19,678	207,632	3,041.0
Parking offences	93	131	128	114	156	102	83	126	154	136	145	133	1,501	22.00
Other regulatory driving offences	15,472	13,612	16,464	16,316	17,335	13,515	15,119	15,378	14,667	14,272	16,476	18,083	186,709	2,734.6
<b>Transport regulatory offences</b>	2,823	2,497	2,649	2,983	3,407	3,201	3,215	3,539	2,889	2,439	3,879	2,959	36,480	534.3
<b>Other offences</b>	1,560	1,327	1,538	1,309	1,156	1,044	1,056	1,170	1,204	1,218	1,299	1,602	15,483	226.8

Number of monthly recorded criminal incidents



---

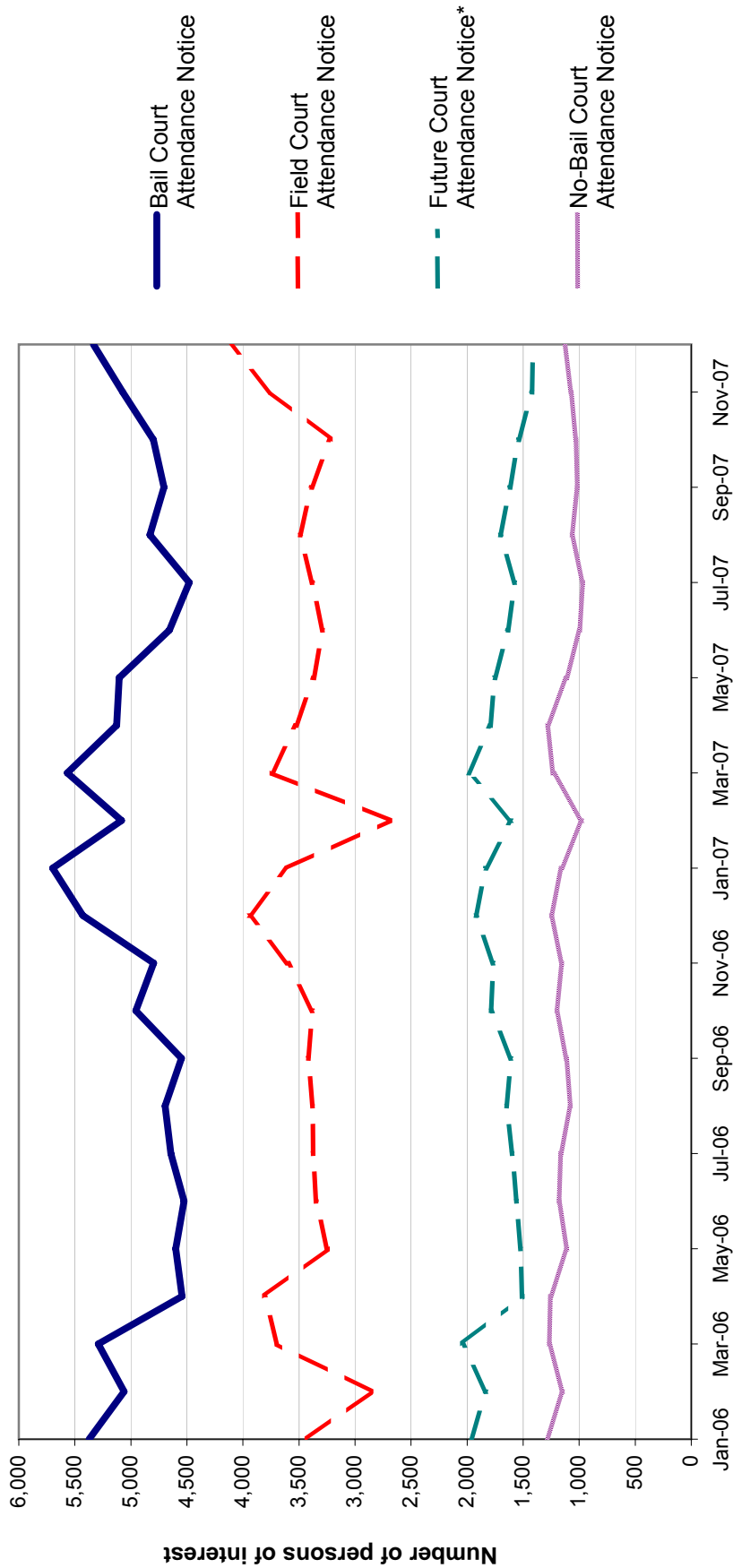
**SECTION 4:**

**METHODS OF PROCEEDINGS  
AGAINST ALLEGED OFFENDERS  
2005, 2006 AND 2007  
NEW SOUTH WALES**

---



Figure 4.1: TRENDS IN REFERRAL METHODS FOR PERSONS OF INTEREST PROCEEDED AGAINST TO COURT, JANUARY 2006 TO DECEMBER 2007, NEW SOUTH WALES



Trends: No-Bail Court Attendance Notice shows a statistically significant downward trend for the 24 month period (down by 8.3%).  
 \* Due to the time lag between the incident being recorded and the Future CAN being issued some upwards revision of data for the last three months of 2007 is expected.

**TABLE 4.1: MONTHLY NUMBER OF PERSONS OF INTEREST RECORDED BY NSW POLICE BY METHOD OF LEGAL PROCEEDINGS  
2005, NEW SOUTH WALES: TYPE OF PROCESS**

Type of process	Number of alleged offenders												2005 Total
	Jan	Feb	Mar	Apr	May	Jun	Jul	Aug	Sep	Oct	Nov	Dec	
<b>Proceeded against to court:</b>													
Bail Court Attendance Notice	5,310	4,610	4,950	4,647	4,753	4,303	4,456	4,638	4,576	5,197	4,778	5,184	57,402
No-Bail Court Attendance Notice	1,752	1,470	1,713	1,654	1,688	1,477	1,470	1,488	1,374	1,546	1,371	1,315	18,318
Future Court Attendance Notice	1,734	1,644	1,736	1,648	1,732	1,691	1,729	1,651	1,627	1,676	1,746	2,017	20,631
Field Court Attendance Notice	4,367	3,419	4,237	3,772	3,854	3,474	3,566	3,416	3,292	3,655	3,654	3,690	44,396
<b>All proceedings to court</b>	<b>13,163</b>	<b>11,143</b>	<b>12,636</b>	<b>11,721</b>	<b>12,027</b>	<b>10,945</b>	<b>11,221</b>	<b>11,193</b>	<b>10,869</b>	<b>12,074</b>	<b>11,549</b>	<b>12,206</b>	<b>140,747</b>
<b>Proceeded against other than to court:</b>													
Youth Justice Conference	84	110	59	53	142	73	65	59	64	70	80	48	907
Caution Young Offenders Act	678	675	801	785	798	710	796	754	876	840	820	706	9,239
Cannabis/other drug caution	305	153	178	240	319	287	275	235	243	245	196	213	2,889
Criminal Infringement Notice	173	149	153	143	143	125	153	113	112	136	122	154	1,676
Infringement Notice/ Public Safety													
Infringement Notice	45,470	36,087	43,042	41,236	41,184	43,193	40,031	43,773	41,017	40,116	35,614	42,327	493,090
Warning*	4,378	3,287	3,522	3,861	3,852	3,584	3,749	3,580	3,708	4,298	3,808	4,127	45,754
<b>All proceedings other than to court</b>	<b>51,088</b>	<b>40,461</b>	<b>47,755</b>	<b>46,318</b>	<b>46,438</b>	<b>47,972</b>	<b>45,069</b>	<b>48,514</b>	<b>46,020</b>	<b>45,705</b>	<b>40,640</b>	<b>47,575</b>	<b>553,555</b>
<b>All proceedings</b>	<b>64,251</b>	<b>51,604</b>	<b>60,391</b>	<b>58,039</b>	<b>58,465</b>	<b>58,917</b>	<b>56,290</b>	<b>59,707</b>	<b>56,889</b>	<b>57,779</b>	<b>52,189</b>	<b>59,781</b>	<b>694,302</b>
<b>Not proceeded against**</b>	<b>6,703</b>	<b>5,925</b>	<b>6,424</b>	<b>5,810</b>	<b>5,954</b>	<b>5,393</b>	<b>5,821</b>	<b>5,742</b>	<b>5,853</b>	<b>6,167</b>	<b>5,920</b>	<b>6,531</b>	<b>72,243</b>

\* This includes warnings issued to both juveniles and adults.

\*\* Includes person deceased, under 10 years of age, diplomatic immunity, mentally incapable of forming criminal intent, DPP or victim refuses to prosecute and proceeding delayed pending further advice.

**TABLE 4.2: MONTHLY NUMBER OF PERSONS OF INTEREST RECORDED BY NSW POLICE BY METHOD OF LEGAL PROCEEDINGS  
2006, NEW SOUTH WALES: TYPE OF PROCESS**

Type of process	Number of alleged offenders												2006 Total			
	Jan	Feb	Mar	Apr	May	Jun	Jul	Aug	Sep	Oct	Nov	Dec				
<b>Proceeded against to court:</b>																
Bail Court Attendance Notice	5,374	5,060	5,291	4,543	4,601	4,525	4,644	4,694	4,548	4,955	4,797	5,430	58,462			
No-Bail Court Attendance Notice	1,291	1,147	1,268	1,256	1,109	1,181	1,164	1,078	1,113	1,200	1,154	1,248	14,209			
Future Court Attendance Notice	1,966	1,831	2,040	1,509	1,522	1,560	1,596	1,648	1,608	1,786	1,767	1,923	20,756			
Field Court Attendance Notice	3,428	2,858	3,694	3,806	3,248	3,348	3,375	3,378	3,418	3,379	3,598	3,947	41,477			
<b>All proceedings to court</b>	<b>12,059</b>	<b>10,896</b>	<b>12,293</b>	<b>11,114</b>	<b>10,480</b>	<b>10,614</b>	<b>10,779</b>	<b>10,798</b>	<b>10,687</b>	<b>11,320</b>	<b>11,316</b>	<b>12,548</b>	<b>134,904</b>			
<b>Proceeded against other than to court:</b>																
Youth Justice Conference	98	70	101	99	109	129	110	142	115	106	111	109	1,299			
Caution Young Offenders Act	744	680	822	768	797	853	876	831	829	886	795	882	9,763			
Cannabis/other drug caution	255	164	191	238	323	240	271	231	236	201	193	227	2,770			
Criminal Infringement Notice	139	135	169	206	122	148	135	153	163	170	172	151	1,863			
Infringement Notice/ Public Safety																
Infringement Notice	37,473	36,924	41,621	41,711	39,014	39,002	37,165	43,356	41,485	42,484	37,372	45,197	482,804			
Warning*	4,022	3,472	4,025	4,230	3,391	3,563	3,688	3,990	4,109	3,855	4,170	4,869	47,384			
<b>All proceedings other than to court</b>	<b>42,731</b>	<b>41,445</b>	<b>46,929</b>	<b>47,252</b>	<b>43,756</b>	<b>43,935</b>	<b>42,245</b>	<b>48,703</b>	<b>46,937</b>	<b>47,702</b>	<b>42,813</b>	<b>51,435</b>	<b>545,883</b>			
<b>All proceedings</b>	<b>54,790</b>	<b>52,341</b>	<b>59,222</b>	<b>58,366</b>	<b>54,236</b>	<b>54,549</b>	<b>53,024</b>	<b>59,501</b>	<b>57,624</b>	<b>59,022</b>	<b>54,129</b>	<b>63,983</b>	<b>680,787</b>			
<b>Not proceeded against**</b>	6,406	6,011	6,515	5,642	5,558	5,492	5,509	5,795	5,819	5,987	6,206	6,521	71,461			

\* This includes warnings issued to both juveniles and adults.

\*\* Includes persons deceased, under 10 years of age, diplomatic immunity, mentally incapable of forming criminal intent, DPP or victim refuses to prosecute and proceeding delayed pending further advice.

**TABLE 4.3: MONTHLY NUMBER OF PERSONS OF INTEREST RECORDED BY NSW POLICE BY METHOD OF LEGAL PROCEEDINGS  
2007, NEW SOUTH WALES: TYPE OF PROCESS**

Type of process	Number of alleged offenders												2007 Total			
	Jan	Feb	Mar	Apr	May	Jun	Jul	Aug	Sep	Oct	Nov	Dec				
<b>Proceeded against to court:</b>																
Bail Court Attendance Notice	5,699	5,084	5,567	5,128	5,103	4,655	4,479	4,829	4,704	4,799	5,074	5,334	5,334	5,074	5,334	60,455
No-Bail Court Attendance Notice	1,160	975	1,233	1,282	1,114	996	968	1,064	1,015	1,029	1,072	1,128	1,128	1,072	1,128	13,036
Future Court Attendance Notice <sup>##</sup>	1,836	1,606	1,989	1,792	1,753	1,635	1,574	1,706	1,619	1,542	1,420	1,414	1,414	1,420	1,414	19,886
Field Court Attendance Notice	3,606	2,689	3,743	3,528	3,368	3,289	3,381	3,492	3,388	3,223	3,753	4,117	4,117	3,753	4,117	41,577
<b>All proceedings to court</b>	<b>12,301</b>	<b>10,354</b>	<b>12,532</b>	<b>11,730</b>	<b>11,338</b>	<b>10,575</b>	<b>10,402</b>	<b>11,091</b>	<b>10,726</b>	<b>10,593</b>	<b>11,319</b>	<b>11,993</b>	<b>11,993</b>	<b>11,319</b>	<b>11,993</b>	<b>134,954</b>
<b>Proceeded against other than to court:</b>																
Youth Justice Conference	125	97	117	132	134	115	348	124	114	101	80	67	67	80	67	1,554
Caution Young Offenders Act	838	764	974	929	902	908	800	827	769	781	852	759	759	852	759	10,103
Cannabis/other drug caution	233	159	250	227	297	232	249	215	197	241	213	237	237	213	237	2,750
Criminal Infringement Notice	147	110	120	147	124	138	127	123	144	144	527	739	739	527	739	2,590
Infringement Notice/ Public Safety																
Infringement Notice	40,603	30,414	37,817	42,942	41,572	34,395	39,343	40,830	39,022	37,621	39,741	47,315	47,315	39,741	47,315	471,615
Warning*	4,596	3,529	4,171	4,340	4,221	3,934	4,129	4,430	4,085	3,883	4,829	5,107	5,107	4,829	5,107	51,254
<b>All proceedings other than to court</b>	<b>46,542</b>	<b>35,073</b>	<b>43,449</b>	<b>48,717</b>	<b>47,250</b>	<b>39,722</b>	<b>44,996</b>	<b>46,549</b>	<b>44,331</b>	<b>42,771</b>	<b>46,242</b>	<b>54,224</b>	<b>54,224</b>	<b>46,242</b>	<b>54,224</b>	<b>539,866</b>
<b>All proceedings</b>	<b>58,843</b>	<b>45,427</b>	<b>55,981</b>	<b>60,447</b>	<b>58,588</b>	<b>50,297</b>	<b>55,398</b>	<b>57,640</b>	<b>55,057</b>	<b>53,364</b>	<b>57,561</b>	<b>66,217</b>	<b>66,217</b>	<b>57,561</b>	<b>66,217</b>	<b>674,820</b>
<b>Not proceeded against**</b>	<b>6,366</b>	<b>5,820</b>	<b>6,737</b>	<b>5,913</b>	<b>6,049</b>	<b>5,299</b>	<b>5,493</b>	<b>5,799</b>	<b>5,656</b>	<b>6,317</b>	<b>6,546</b>	<b>6,307</b>	<b>6,307</b>	<b>6,546</b>	<b>6,307</b>	<b>72,302</b>

# These data show the number of Future CANs issued for criminal incidents recorded in 2007. Due to the time lag between the incident being recorded and the Future CAN being issued, data for the last half of 2007 are low.

\* This includes warnings issued to both juveniles and adults.

\*\* Includes person deceased, under 10 years of age, diplomatic immunity, mentally incapable of forming criminal intent, DPP or victim refuses to prosecute and proceeding delayed pending further advice.

---

**SECTION 5:**

**CLEARED CRIMINAL INCIDENTS  
AND WHETHER LEGAL PROCEEDINGS  
COMMENCED FOR SELECTED OFFENCES  
JANUARY 2005 TO SEPTEMBER 2007  
NEW SOUTH WALES**

---

**TABLE 5.1: NUMBER OF RECORDED CRIMINAL INCIDENTS FOR SELECTED OFFENCES BY CLEAR UP STATUS AND WHETHER LEGAL PROCEEDINGS COMMENCED, JANUARY 2005 TO DECEMBER 2005, NEW SOUTH WALES**

Type of offence	Total number recorded	Recorded criminal incidents					
		Cleared within 30 days of reporting			Cleared within 90 days of reporting		
		Total number cleared <sup>#</sup> within 30 days	Proceedings commenced <sup>##</sup> within 30 days	% proceedings commenced within 30 days	Total number cleared <sup>#</sup> within 90 days	Proceedings commenced <sup>##</sup> within 90 days	% proceedings commenced within 90 days
Murder*	81	55	47	58.0	62	54	66.7
Assault - domestic violence related	26,340	21,072	12,854	48.8	22,186	13,615	51.7
Assault - non-domestic violence related	45,378	21,430	11,209	24.7	23,584	12,826	28.3
Sexual assault	4,109	675	323	7.9	893	482	11.7
Indecent assault, act of indecency	3,574	751	404	11.3	1,022	596	16.7
Other sexual offences	2,017	515	282	14.0	571	320	15.9
Abduction and kidnapping	400	103	76	19.0	123	86	21.5
Robbery without a weapon	5,152	639	500	9.7	729	586	11.4
Robbery with a firearm	490	47	42	8.6	55	48	9.8
Robbery with a weapon not a firearm	2,668	372	328	12.3	465	405	15.2
Harassment, threatening behaviour and private nuisance	21,996	10,847	3,105	14.1	11,508	3,434	15.6
Break and enter - dwelling	49,935	2,331	1,682	3.4	2,925	2,102	4.2
Break and enter - non-dwelling	27,649	1,225	1,005	3.6	1,510	1,228	4.4
Motor vehicle theft	29,171	1,216	1,017	3.5	1,500	1,215	4.2
Steal from motor vehicle	54,616	1,268	979	1.8	1,488	1,121	2.1
Steal from retail store	18,465	9,714	8,071	43.7	10,191	8,514	46.1
Steal from dwelling	25,149	1,912	675	2.7	2,181	805	3.2
Steal from person	12,622	572	321	2.5	649	375	3.0
Stock theft	654	33	7	1.1	43	14	2.1
Fraud	34,048	4,222	2,744	8.1	5,443	3,776	11.1
Arson	6,524	322	188	2.9	363	214	3.3
Malicious damage to property	103,513	17,170	9,862	9.5	18,693	10,988	10.6

<sup>#</sup> Total number cleared includes both incidents where proceedings were commenced and those where no proceedings were commenced.

<sup>##</sup> This includes incidents where a person was proceeded against to court or proceeded against other than to court.

\* Victims for whom incident was cleared.

**TABLE 5.2: NUMBER OF RECORDED CRIMINAL INCIDENTS FOR SELECTED OFFENCES BY CLEAR UP STATUS AND WHETHER LEGAL PROCEEDINGS COMMENCED, JANUARY 2006 TO DECEMBER 2006, NEW SOUTH WALES: TYPE OF OFFENCE**

Type of offence	Recorded criminal incidents						
	Total number recorded	Cleared within 30 days of reporting			Cleared within 90 days of reporting		
		Total number cleared #	Proceedings commenced within 30 days ##	% proceedings commenced within 30 days	Total number cleared #	Proceedings commenced within 90 days ##	% proceedings commenced within 90 days
Murder*	97	54	47	48.5	64	56	57.7
Assault - domestic violence related	26,991	21,621	13,776	51.0	22,637	14,510	53.8
Assault - non-domestic violence related	45,499	21,516	11,348	24.9	23,653	12,946	28.5
Sexual assault	4,028	659	330	8.2	850	449	11.1
Indecent assault, act of indecency	3,507	850	449	12.8	1,082	600	17.1
Other sexual offences	1,893	496	287	15.2	550	317	16.7
Abduction and kidnapping	402	130	104	25.9	139	109	27.1
Robbery without a weapon	4,941	635	513	10.4	737	609	12.3
Robbery with a firearm	562	74	70	12.5	95	91	16.2
Robbery with a weapon not a firearm	2,509	384	351	14.0	504	471	18.8
Harassment, threatening behaviour and private nuisance	23,043	11,910	3,694	16.0	12,653	4,114	17.9
Break and enter - dwelling	48,038	2,283	1,683	3.5	2,832	2,097	4.4
Break and enter - non-dwelling	27,153	1,350	1,125	4.1	1,670	1,374	5.1
Motor vehicle theft	28,441	1,226	1,006	3.5	1,474	1,198	4.2
Steal from motor vehicle	58,245	1,090	832	1.4	1,293	978	1.7
Steal from retail store	18,110	9,572	8,020	44.3	9,958	8,408	46.4
Steal from dwelling	24,313	1,813	678	2.8	2,051	824	3.4
Steal from person	11,963	501	293	2.4	579	352	2.9
Stock theft	596	31	8	1.3	38	14	2.3
Fraud	34,725	4,181	2,602	7.5	5,386	3,552	10.2
Arson	7,783	368	212	2.7	414	237	3.0
Malicious damage to property	109,155	18,139	10,668	9.8	19,576	11,743	10.8

# Total number cleared includes both incidents where proceedings were commenced and those where no proceedings were commenced.

## This includes incidents where a person was proceeded against to court or proceeded against other than to court.

\* Victims for whom incident was cleared.

**TABLE 5.3: NUMBER OF RECORDED CRIMINAL INCIDENTS FOR SELECTED OFFENCES BY CLEAR UP STATUS AND WHETHER LEGAL PROCEEDINGS COMMENCED, JANUARY 2007 TO SEPTEMBER 2007, NEW SOUTH WALES: TYPE OF OFFENCE**

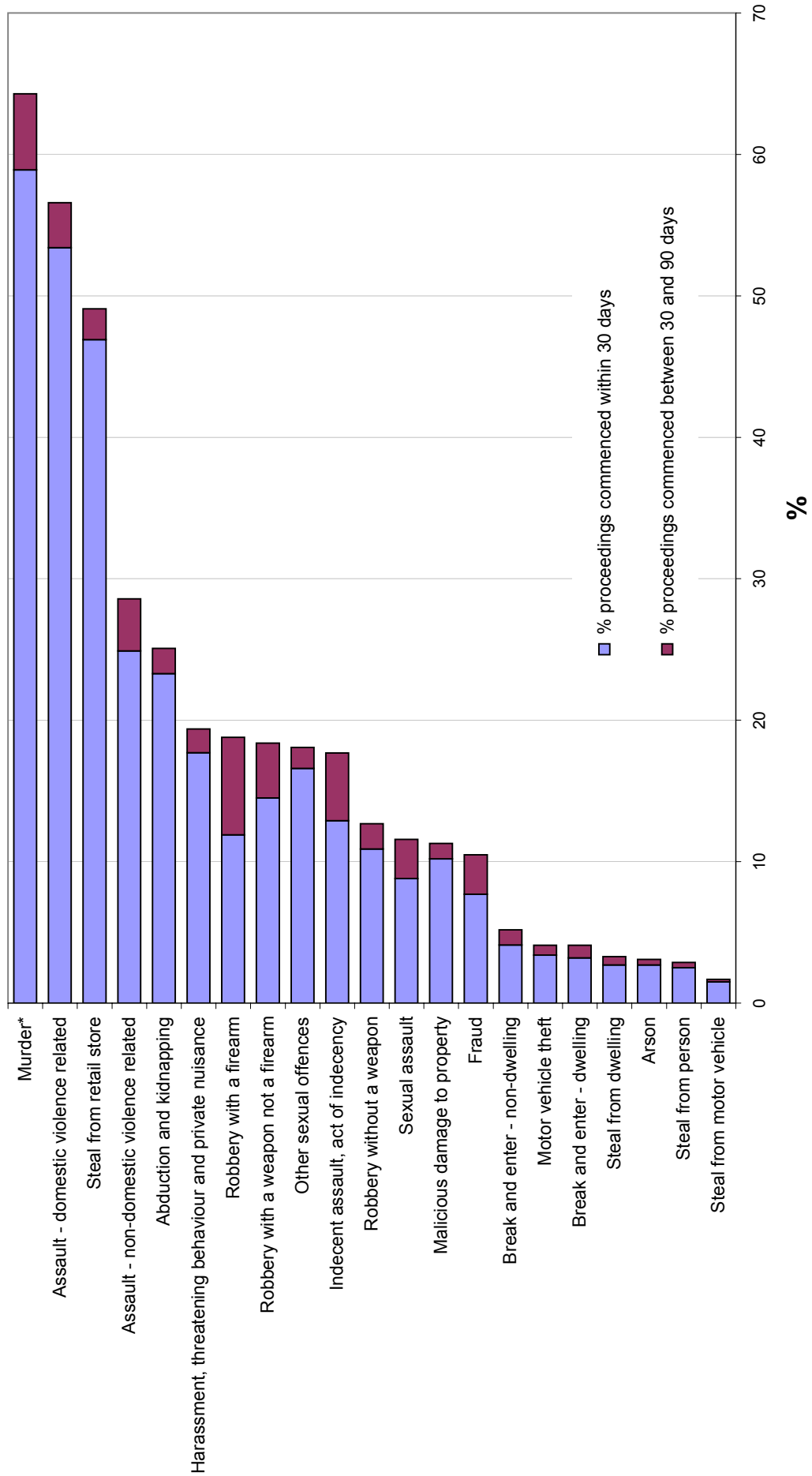
Type of offence	Total number recorded	Recorded criminal incidents					
		Cleared within 30 days of reporting			Cleared within 90 days of reporting		
		Total number cleared <sup>#</sup> within 30 days	Proceedings commenced <sup>##</sup> within 30 days	% proceedings commenced within 30 days	Total number cleared <sup>#</sup> within 90 days	Proceedings commenced <sup>##</sup> within 90 days	% proceedings commenced within 90 days
Murder*	56	35	33	58.9	39	36	64.3
Assault - domestic violence related	20,511	16,364	10,951	53.4	17,239	11,605	56.6
Assault - non-domestic violence related	34,113	15,618	8,483	24.9	17,288	9,744	28.6
Sexual assault	3,074	515	272	8.8	657	358	11.6
Indecent assault, act of indecency	2,549	597	330	12.9	763	451	17.7
Other sexual offences	1,287	343	214	16.6	374	233	18.1
Abduction and kidnapping	287	80	67	23.3	85	72	25.1
Robbery without a weapon	3,721	498	404	10.9	576	474	12.7
Robbery with a firearm	430	55	51	11.9	83	81	18.8
Robbery with a weapon not a firearm	1,845	290	267	14.5	362	339	18.4
Harassment, threatening behaviour and private nuisance	18,388	9,503	3,253	17.7	10,123	3,562	19.4
Break and enter - dwelling	35,691	1,558	1,156	3.2	1,954	1,454	4.1
Break and enter - non-dwelling	18,244	932	747	4.1	1,187	941	5.2
Motor vehicle theft	20,297	821	688	3.4	1,013	823	4.1
Steal from motor vehicle	46,512	873	691	1.5	1,039	812	1.7
Steal from retail store	13,855	7,762	6,502	46.9	8,076	6,801	49.1
Steal from dwelling	17,109	1,272	466	2.7	1,461	573	3.3
Steal from person	9,061	389	225	2.5	443	261	2.9
Stock theft	442	28	5	1.1	34	8	1.8
Fraud	24,133	2,928	1,850	7.7	3,735	2,524	10.5
Arson	5,265	247	141	2.7	269	161	3.1
Malicious damage to property	79,391	13,327	8,104	10.2	14,432	8,968	11.3

<sup>#</sup> Total number cleared includes both incidents where proceedings were commenced and those where no proceedings were commenced.

<sup>##</sup> This includes incidents where a person was proceeded against to court or proceeded against other than to court.

\* Victims for whom incident was cleared.

**Figure 5.1: PERCENTAGE OF RECORDED CRIMINAL INCIDENTS FOR SELECTED OFFENCES WHERE LEGAL PROCEEDINGS COMMENCED WITHIN 30 AND 90 DAYS, JANUARY 2007 TO SEPTEMBER 2007**



\* For murder the data are counts of recorded victims, not criminal incidents



---

# APPENDICES

---

## Appendix 1

<i>Classification</i>	<i>NSW Police Force offence categories</i>
<b>Homicide:</b>	
Murder	Murder – actual
Attempted murder	Murder – attempted Shoot with intent to murder
Murder accessory, conspiracy	Murder accessory Murder conspiracy
Manslaughter – not driving	Manslaughter
Driving causing death	Culpable driving causing death Culpable navigation causing death Manslaughter
<b>Assault:</b>	<i>Includes any of the following offences where police have flagged the incident as domestic violence related or non-domestic violence related:</i>
Domestic violence related	Actual bodily harm Grievous bodily harm (including malicious wounding) Assault officer Common assault Shoot with intent other than to murder
Non-domestic violence related	Actual bodily harm Grievous bodily harm (including malicious wounding) Assault officer Common assault Shoot with intent other than to murder
<b>Sexual offences:</b>	
Sexual assault	Sexual assault Aggravated sexual assault Assault with intent to have sexual intercourse
Indecent assault, act of indecency	Indecent assault Aggravated indecent assault Act of indecency Aggravated act of indecency
Other sexual offences	Incest Carnal knowledge Wilful and obscene exposure Indecent communication Peep or pry Bestiality Other sexual offence
<b>Abduction and kidnapping</b>	Abduction / kidnapping

**Appendix 1** *continued*

<b>Classification</b>	<b>NSW Police Force offence categories</b>
<b>Robbery:</b>	
Robbery without a weapon	<i>Includes any of the following offences in which no weapon was recorded:</i> Robbery Robbery with aggravation Demand money with menaces Robbery with wounding Other robbery
Robbery with a firearm	<i>Includes any of the following offences in which a firearm was recorded as a weapon:</i> Robbery Armed robbery Robbery with aggravation Demand money with menaces Robbery with wounding Other robbery
Robbery with a weapon not a firearm	<i>Armed robbery where a firearm was not recorded as a weapon or any of the following offences in which a weapon other than a firearm was recorded:</i> Robbery Robbery with aggravation Robbery with wounding Demand money with menaces Other robbery
<b>Blackmail and extortion</b>	Extortion / blackmail
<b>Harassment, threatening behaviour and private nuisance</b>	Intimidation ( <i>includes threatening behaviour, stalking</i> ) Telecommunications offence ( <i>includes nuisance phone calls</i> )
<b>Other offences against the person</b>	Malicious damage intent injure / endanger Negligent act cause grievous bodily harm Other offence against the person
<b>Theft:</b>	
Break and enter – dwelling	<i>Dwelling includes premises where people reside such as house, home unit, caravan, tent as well as any attachment such as garage, shed, yard and garden.</i> Break, enter and steal Break, enter intent to steal Break, enter and commit other felony Break, enter, intent to commit other felony
Break and enter – non-dwelling	<i>Non-dwelling includes commercial and government premises.</i> Break, enter and steal Break, enter intent to steal Break, enter and commit other felony Break, enter and intent to commit other felony

**Appendix 1** *continued*

<b>Classification</b>	<b>NSW Police Force offence categories</b>
<b>Theft</b> <i>continued:</i>	
Receiving or handling stolen goods	Receiving Goods in custody Possess property stolen outside NSW
Motor vehicle theft	Theft of motor cars, motor cycles, and other vehicles
Steal from motor vehicle	Steal from motor vehicle
Steal from retail store	Steal from retail store
Steal from dwelling	Steal from dwelling Other stealing <i>occurring in a residential dwelling</i>
Steal from person	Steal from person
Stock theft	Steal stock (animal)
Fraud	Larceny clerk / servant / bailee Make / use false instrument Embezzlement Fraudulent misappropriation Company / corporate offence Deception offence Possess false instrument Publish false misleading statement Corrupt commission / practices Counterfeit currency Other fraud
Other theft	Steal from marine vessel Steal vessel Other stealing <i>occurring somewhere other than a residential dwelling</i>
<hr/>	
<b>Arson</b>	Malicious damage by fire Destroy by fire – financial gain Destroy by fire – intent injure
<hr/>	
<b>Malicious damage to property</b>	Malicious damage to property Graffiti Public place – damage fountain / wall etc. Public place – damage shrine / monument
<hr/>	
<b>Drug offences:</b>	
Possession and / or use of cocaine	Possess drug <i>where drug type is cocaine</i> Use or administer drug <i>where drug type is cocaine</i>
Possession and / or use of narcotics	Possess drug <i>where drug type is narcotics</i> Use or administer drug <i>where drug type is narcotics</i>
Possession and / or use of cannabis	Possess drug / plant <i>where drug type is cannabis</i> Use or administer drug <i>where drug type is cannabis</i>

**Appendix 1** *continued*

<b>Classification</b>	<b>NSW Police Force offence categories</b>
<b>Drug offences</b> <i>continued:</i>	
Possession and / or use of amphetamines	Possess drug <i>where drug type is amphetamines</i> Use or administer drug <i>where drug type is amphetamines</i>
Possession and / or use of ecstasy	Possess drug <i>where drug type is ecstasy</i> Use or administer drug <i>where drug type is ecstasy</i>
Possession and / or use of other drugs	Possess drug <i>where drug type is not cocaine, narcotics, cannabis,</i> Use or administer drug <i>where drug type is not cocaine, narcotics,</i> <i>cannabis, amphetamines or ecstasy</i>
Dealing, trafficking in cocaine	Supply drug <i>where drug type is cocaine</i>
Dealing, trafficking in narcotics	Supply drug <i>where drug type is narcotics</i>
Dealing, trafficking in cannabis	Supply drug / plant <i>where drug type is cannabis</i>
Dealing, trafficking in amphetamines	Supply drug <i>where drug type is amphetamines</i>
Dealing, trafficking in ecstasy	Supply drug <i>where drug type is ecstasy</i>
Dealing, trafficking in other drugs	Supply drug <i>where drug type is not cocaine, narcotics, cannabis,</i> <i>amphetamines or ecstasy</i>
Cultivating cannabis	Cultivate cannabis plant Hydroponics / cultivate Plantation
Manufacture drug	Manufacture drug
Importing drugs	Import drug / plant
Other drug offences	Forge and / or utter prescription Possess drug utensil Other drug detection / seizure offence
<hr/>	
<b>Prohibited and regulated weapons offences</b>	Possess whilst unlicensed Possess shortened firearm Possess prohibited weapon / article Shorten firearm Firearms, dealer offence Unlawfully discharge firearm Trespass with firearm Use firearm under influence Discharge firearm into premises Other firearm offence Other firearm licensing offence Firearms, not ensure safekeeping Use prohibited weapon / article Sell prohibited weapon / article Other prohibited weapon / article offence Bomb hoax or threat Possess explosive / dangerous article Search knife / implement found Item / object/ weapon found

**Appendix 1** *continued*

<b>Classification</b>	<b>NSW Police Force offence categories</b>
<b>Disorderly conduct:</b>	
Trespass	Trespass Remain in closed lands
Offensive conduct	Offensive conduct
Offensive language	Offensive language
Criminal intent	Enter land with intent Armed with intent Disguised with intent Intent to repeat indictable offence Possess implements
<b>Betting and gaming offences</b>	Own / manage premises – gaming Own / manage premises – betting Conduct / play illegal game Other gaming offence
<b>Liquor offences</b>	Consume alcohol in public by minor Consume alcohol in alcohol-free zone Liquor Act offence – Supply liquor to juvenile Liquor Act offence by minor, customer, employee or licensee Registered Clubs Act offence by minor, customer, employee,
<b>Pornography offences</b>	Possess / publish indecent material Child pornography
<b>Prostitution offences</b>	Soliciting / prostitution in public Prostitution – premises Prostitution – live off earnings Consorting Child prostitution Other vice offence
<b>Against justice procedures:</b>	
Escape Custody	Escapee – Corrective Services custody Escapee – Police custody Escapee – Other custody
Breach Apprehended Violence Order	Breach Apprehended Violence Order – domestic Breach Apprehended Violence Order – personal
Breach bail conditions	Breach bail conditions
Fail to appear	Fail to appear
Resist or hinder officer	Resist officer Hinder officer Refuse to be searched Refuse to produce object Refuse direction drug related Refuse direction not drug related

**Appendix 1** *continued*

<b>Classification</b>	<b>NSW Police Force offence categories</b>
<b>Against justice procedures</b> <i>continued</i> :	
Other offences against justice procedures	Accessory after the fact Other judicial offence Breach of recognizance
<b>Driving offences:</b>	
Drive under influence of alcohol or drug	<i>Detailed information on driving incidents is not recorded on COPS. The driving statistics in this report represent legal actions commenced by police including referrals to court and infringement notices rather than recorded incidents. Offences are determined by matching lawpart codes to the driving classifications used in the Australian Standard Offence Classification (ABS Cat. No. 1234.0).</i>
Dangerous or negligent driving	
Driving licence cancelled or suspended	
Driving without a licence	
Driving licence offences	
Registration offences	
Road worthiness offences	
Exceeding the prescribed conc. of alcohol	
Exceeding legal speed limit	
Parking offences	
Other regulatory driving offences	
<b>Transport regulatory offences</b>	Transport offence ( <i>includes offences on the rail network such as travelling without a valid ticket, smoking, drinking or using offensive language on a train or railway land</i> )
<b>Other offences</b>	Immigration / customs offence Animals – dog offences Family law offence Unlawful assembly Obstruction Violent disorder Riot and affray Custody of offensive implement Carry cutting weapon Public mischief Offence against transport service Other street offences Other miscellaneous offences  Offences under various acts: Acts administered by the Waterways Authority of NSW <i>Australian Postal Corporation Act 1989 (Cwlth)</i> <i>Children and Young Persons (Care and Protection) Act 1998 (NSW)</i> <i>Children (Care and Protection) Act 1987 (NSW)</i> <i>Companion Animals Act 1998 (NSW)</i> <i>Family Law Act 1975 (Cwlth)</i> <i>Local Government Act 1993 (NSW)</i> <i>Pawnbrokers and Second-hand Dealers Act 1997 (NSW)</i> <i>Prevention of Cruelty to Animals Act 1979 (NSW)</i> <i>Rural Fires Act 1997 (NSW)</i> <i>Security Industry Act 1997 (NSW)</i>

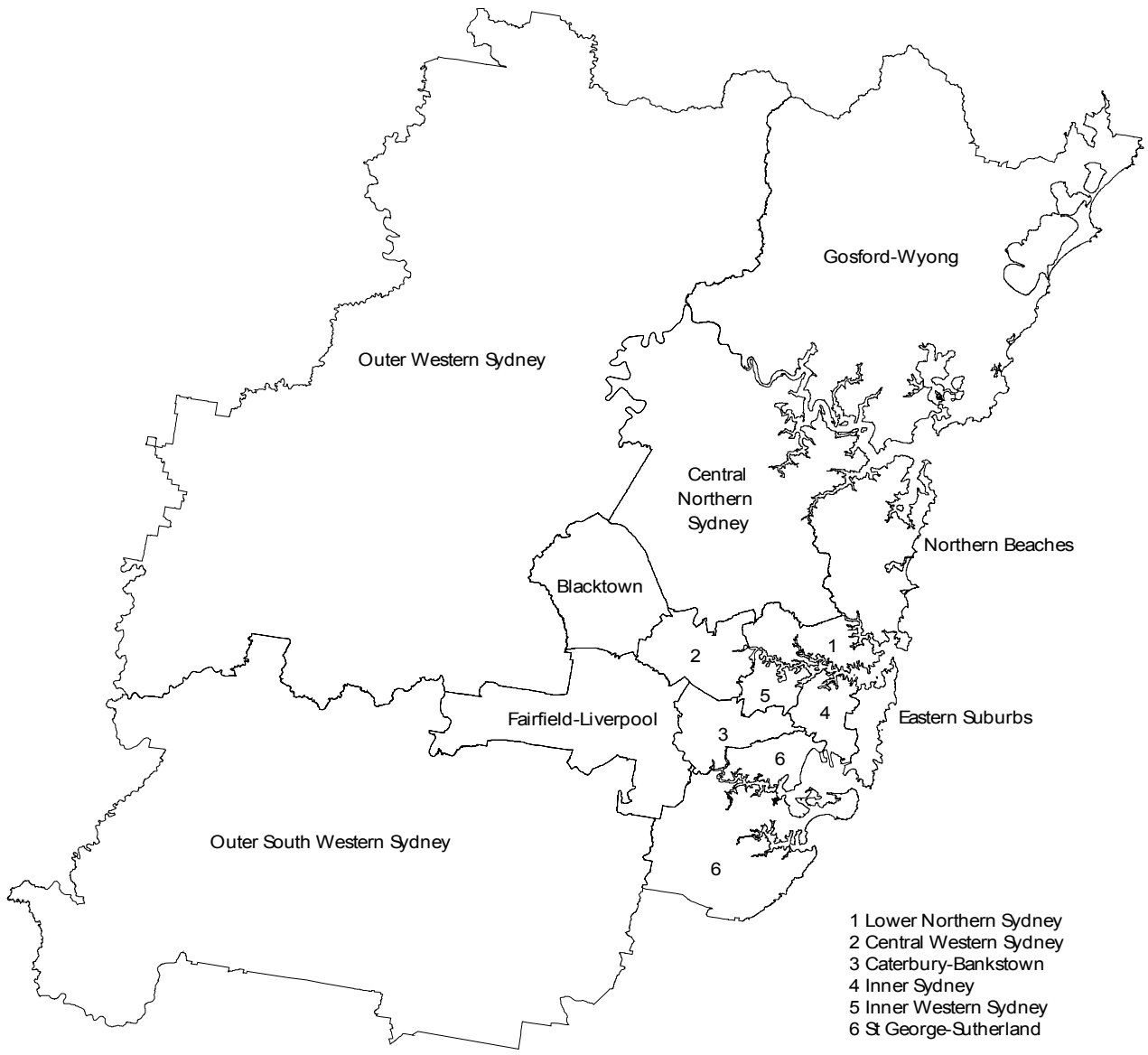
## Appendix 2

Map 1: New South Wales Statistical Division boundaries



**Appendix 2** *continued*

Map 2: Sydney Statistical Subdivision boundaries



## Appendix 3

### ***Sydney Statistical Subdivisions***

---

#### ***Inner Sydney***

Botany Bay  
Leichhardt  
Marrickville  
Sydney

#### ***Outer South Western Sydney***

Camden  
Campbelltown  
Wollondilly

#### ***Lower Northern Sydney***

Hunters Hill  
Lane Cove  
Mosman  
North Sydney  
Ryde  
Willoughby

#### ***Eastern Suburbs***

Randwick  
Waverley  
Woollahra

#### ***Inner Western Sydney***

Ashfield  
Burwood  
Canada Bay  
Strathfield

#### ***Central Northern Sydney***

Baulkham Hills  
Hornsby  
Ku-ring-gai

#### ***St George – Sutherland***

Hurstville  
Kogarah  
Rockdale  
Sutherland Shire

#### ***Central Western Sydney***

Auburn  
Holroyd  
Parramatta

#### ***Northern Beaches***

Manly  
Pittwater  
Warringah

#### ***Canterbury – Bankstown***

Bankstown  
Canterbury

#### ***Outer Western Sydney***

Blue Mountains  
Hawkesbury  
Penrith

#### ***Gosford – Wyong***

Gosford  
Wyong

#### ***Fairfield – Liverpool***

Fairfield  
Liverpool

#### ***Blacktown***

Blacktown

**Appendix 3** *continued***NSW regional Statistical Divisions**

<b>Hunter</b>	<b>Illawarra</b>	<b>Richmond – Tweed</b>	<b>Mid-North Coast</b>
Cessnock	Kiama	Ballina	Bellingen
Dungog	Shellharbour	Byron	Clarence Valley
Gloucester	Shoalhaven	Kyogle	Coffs Harbour
Great Lakes	Wingecarribee	Lismore	Greater Taree
Lake Macquarie	Wollongong	Richmond Valley	Hastings
Maitland		Tweed	Kempsey
Muswellbrook			Lord Howe Island
Newcastle			Nambucca
Port Stephens			
Singleton			
Upper Hunter Shire			
<b>Northern</b>	<b>North Western</b>	<b>Central West</b>	<b>South Eastern</b>
Armidale Dumaresq	Bogan	Bathurst Regional	Bega Valley
Glen Innes Severn	Bourke	Bland	Bombala
Gunnedah	Brewarrina	Blayney	Boorowa
Guyra	Cobar	Cabonne	Cooma-Monaro
Gwydir	Coonamble	Cowra	Eurobodalla
Inverell	Dubbo	Forbes	Goulburn Mulwaree
Liverpool Plains	Gilgandra	Lachlan	Harden
Moree Plains	Mid-Western Regional	Lithgow	Palerang
Narrabri	Narromine	Oberon	Queanbeyan
Tamworth Regional	Walgett	Orange	Snowy River
Tenterfield	Warren	Parkes	Upper Lachlan
Uralla	Warrumbungle Shire	Weddin	Yass Valley
Walcha	Wellington		Young
<b>Murrumbidgee</b>	<b>Murray</b>	<b>Far West</b>	
Carrathool	Albury	Broken Hill	
Coolamon	Balranald	Central Darling	
Cootamundra	Berrigan	Unincorporated Far West	
Griffith	Conargo		
Gundagai	Corowa Shire		
Hay	Deniliquin		
Junee	Greater Hume Shire		
Leeton	Jerilderie		
Lockhart	Murray		
Murrumbidgee	Tumbarumba		
Narrandera	Urana		
Temora	Wakool		
Tumut	Wentworth		
Wagga Wagga			

