

NSW Bureau of Crime
Statistics and Research

Crime and Justice Statistics

Bureau Brief

Issue paper no. 30

April 2005

CRIME TRENDS FOR POSTCODES CONNECTED TO THE SYDNEY LGA

Steve Moffatt and Derek Goh

This paper shows the crime rate and recent crime trends in the 15 postcodes in the Sydney Local Government Area¹. The crime rate is the ratio between the number of criminal incidents and the residential population.

TRENDS IN THE ENTIRE SYDNEY LGA

In the 24 months to December 2004 the trends in the major offence categories in the Sydney LGA were as follows:

Significant upward trends

- Indecent assault, act of indecency, other sexual offences (up 35.6%)

Significant downward trends

- Robbery without a weapon (down 19.5%)
- Robbery with a firearm (down 34.1%)
- Break and enter - dwelling (down 10.5%)
- Break and enter - non dwelling (down 12.3%)
- Steal from motor vehicle (down 18.8%)
- Steal from person (down 26.8%)

Offences where there was no upward or downward trend

- assault
- sexual assault
- robbery with a weapon not a firearm
- motor vehicle theft
- steal from motor vehicle
- steal from retail store
- fraud
- malicious damage to property

TRENDS BY POSTCODE

Table 1 shows the number and rate² of recorded criminal incidents in 2003 and 2004 in each of the 15 postcodes in Sydney LGA. For offences with at least 20 recorded incidents in each of the two years a trend test has been performed. The last page of the table shows the rate of crime in Sydney Statistical Division and New South Wales for comparison.

The major points to note are:

- There are very few offences trending upwards in the inner city postcodes. Ten of the 15 postcodes showed no increases for any offence. Three postcodes showed an increase in a single offence and two postcodes showed an increase in two offences.
- Decreases in crime were not uniform. Half the postcodes in Sydney LGA have two or less offences trending downward. The areas with the most offences trending downwards were postcodes 2000, 2010 (Darlinghurst, Surry Hills) and 2042 (Newtown, Enmore).
- Redfern postcode (2016) showed no significant increases and significant decreases in three offences - *break and enter - non-dwelling* (down 33.9%), *steal from motor vehicle* (down 31.4%) and *steal from person* (down 39.2%).

Figure 1 shows the number of postcodes with significant upward and downward trends by offence. This figure shows that more than half of the postcodes recorded significant downward trends in *steal from motor vehicle* and almost half recorded significant downward trends in *steal from person*.

NOTES

- 1 The Sydney LGA is diverse with high levels of activity attributed to the transient population who use the area daily for work and entertainment etc. Crime rates are based on resident population figures. For areas where high transient populations are present, inferences drawn from comparisons with other LGAs can be misleading, hence for comparisons we have calculated crime rates across the Sydney LGA postcodes.
- 2 Rates are expressed per 100,000 population.

Figure 1: Sydney postcodes connected to Sydney LGA

Number of significant trends 2003 to 2004 in major crime categories for the 15 postcodes with at least 20 incidents recorded in the offence category 2003 and 2004

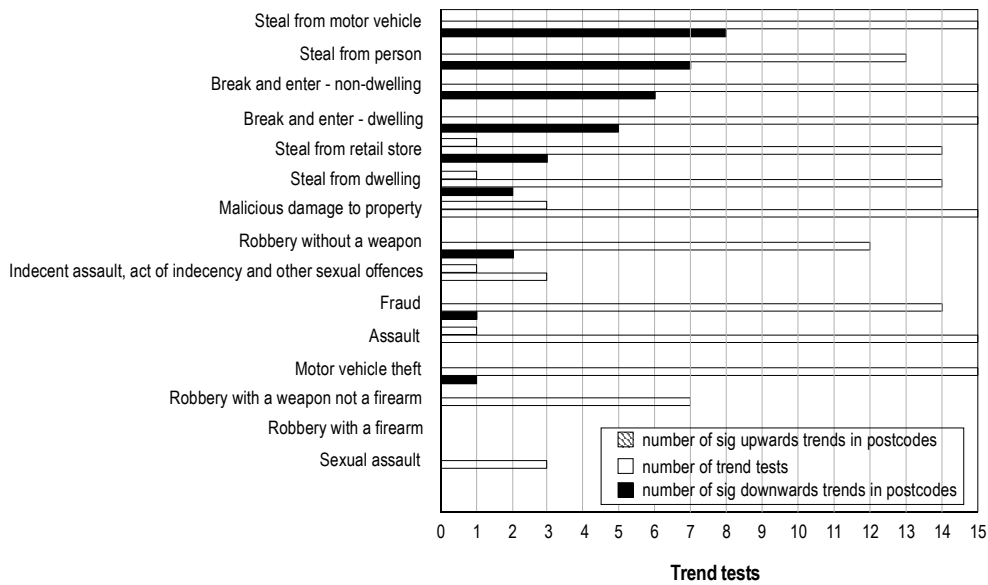


Table 1: Sydney LGA Postcodes - Percentage change in number of recorded incidents over the 24 months to December 2004
Major offences showing statistically significant trends in Sydney postcodes connecting with Sydney LGA

Sydney LGA postcodes		Murder	Assault	Sexual assault	Indecent assault, act of indecency and other sexual offences	Robbery without a weapon	Robbery with a firearm	Robbery with a weapon not a firearm	Break and enter - dwelling	Break and enter - non-dwelling	Motor vehicle theft	Steal from motor vehicle	Steal from retail store	Steal from dwelling	Steal from person	Fraud	Malicious damage to property
[Dawes Pt, Haymarket, Millers Pt, St James, Sydney, Sydney South, The Rocks]	2000																
	Incidents 2003	3	1853	44	79	366	20	140	77	1023	286	2529	1043	68	3858	2277	923
	Incidents 2004	1	1743	64	104	216	9	113	120	902	263	2025	980	97	2753	2334	875
	Rate 2003	10.0	6178.3	146.7	263.4	1220.3	66.7	466.8	256.7	3410.9	953.6	8432.2	3477.6	226.7	12863.4	7592.0	3077.5
	Rate 2004	3.3	5811.5	213.4	346.8	720.2	30.0	376.8	400.1	3007.5	876.9	6751.8	3267.5	323.4	9179.1	7782.1	2917.4
2001 population 29,992	Trend 2004^	-	ns	ns	ns	-41.0%	-	ns	ns	-11.8%	-8.0%	-19.9%	ns	42.6%	-28.6%	ns	ns
[Broadway, Ultimo]	2007																
	Incidents 2003	0	99	4	3	58	10	26	65	102	66	395	98	18	131	121	109
	Incidents 2004	0	79	8	15	49	6	30	79	108	65	363	55	36	132	170	106
	Rate 2003	0.0	2281.1	92.2	69.1	1336.4	230.4	599.1	1497.7	2350.2	1520.7	9101.4	2258.1	414.7	3018.4	2788.0	2511.5
	Rate 2004	0.0	1820.3	184.3	345.6	1129.0	138.2	691.2	1820.3	2488.5	1497.7	8364.1	1267.3	829.5	3041.5	3917.1	2442.4
2001 population 4,340	Trend 2004^	-	ns	-	-	ns	-	ns	ns	ns	ns	ns	-43.9%	-	ns	ns	ns
[Chippendale, Darlington]	2008																
	Incidents 2003	0	91	4	4	147	3	48	160	69	75	383	6	69	147	44	114
	Incidents 2004	0	86	7	6	69	2	35	128	48	79	256	9	75	115	40	113
	Rate 2003	0.0	1482.6	65.2	65.2	2394.9	48.9	782.0	2606.7	1124.1	1221.9	6239.8	97.8	1124.1	2394.9	716.8	1857.3
	Rate 2004	0.0	1401.1	114.0	97.8	1124.1	32.6	570.2	2085.4	782.0	1287.1	4170.7	146.6	1221.9	1873.6	651.7	1841.0
2001 population 4,340	Trend 2004^	-	ns	-	-	-53.1%	-	ns	ns	ns	ns	-33.2%	-	ns	-21.8%	ns	ns
[Pyrmont]	2009																
	Incidents 2003	0	302	9	10	44	7	23	133	83	78	370	30	45	311	121	172
	Incidents 2004	0	242	10	8	46	5	22	112	58	84	344	14	56	230	109	158
	Rate 2003	0.0	3609.0	107.6	119.5	525.8	83.7	274.9	1589.4	991.9	932.1	4421.6	358.5	537.8	3716.5	1446.0	2055.4
	Rate 2004	0.0	2892.0	119.5	95.6	549.7	59.8	262.9	1338.4	693.1	1003.8	4110.9	167.3	669.2	2748.6	1302.6	1888.1
2001 population 8,368	Trend 2004^	-	ns	-	-	ns	-	ns	ns	ns	ns	ns	-	ns	-26.0%	ns	ns
[Darlinghurst, Surry Hills]	2010																
	Incidents 2003	2	855	34	24	224	21	90	508	348	318	1770	129	271	676	408	601
	Incidents 2004	0	991	34	49	177	14	90	390	310	317	1251	124	235	511	428	685
	Rate 2003	8.0	3400.5	135.2	95.5	890.9	83.5	358.0	2020.4	1384.1	1264.8	7039.7	513.1	1077.8	2688.6	1622.7	2390.3
	Rate 2004	0.0	3941.5	135.2	194.9	704.0	55.7	358.0	1551.1	1232.9	1260.8	4975.5	493.2	934.7	2032.4	1702.3	2724.4
2001 population 25,143	Trend 2004^	-	ns	ns	104.2%	ns	-	ns	-23.2%	-10.9%	ns	-29.3%	ns	-13.3%	-24.4%	ns	14.0%

Table 1: Sydney LGA Postcodes - Percentage change in number of recorded incidents over the 24 months to December 2004 - continued
Major offences showing statistically significant trends in Sydney postcodes connecting with Sydney LGA

Sydney LGA postcodes		Murder	Assault	Sexual assault	Indecent assault, act of indecency and other sexual offences	Robbery without a weapon	Robbery with a firearm	Robbery with a weapon not a firearm	Break and enter - dwelling	Break and enter - non-dwelling	Motor vehicle theft	Steal from motor vehicle	Steal from retail store	Steal from dwelling	Steal from person	Fraud	Malicious damage to property
2011 [Eliz. Bay, Garden Is., Kings Cross, Potts Pt, Rushcutters Bay, Woolloomooloo]	Incidents 2003	1	718	34	23	131	4	55	247	138	225	718	72	137	553	347	380
	Incidents 2004	0	738	30	21	113	4	34	168	150	203	668	67	112	444	229	403
	Rate 2003	5.0	3586.8	169.8	114.9	654.4	20.0	274.8	1233.9	689.4	1124.0	3586.8	359.7	684.4	2762.5	1733.4	1898.3
	Rate 2004	0.0	3686.7	149.9	104.9	564.5	20.0	169.8	839.2	749.3	1014.1	3337.0	334.7	559.5	2218.0	1144.0	2013.2
	2001 population 20,018	Trend 2004^	-	ns	ns	ns	ns	-	ns	-32.0%	ns	ns	ns	ns	ns	-19.7%	-34.0%
2015 [Alexandria, Beaconsfield]	Incidents 2003	0	80	4	4	29	7	12	153	215	117	190	40	58	35	116	98
	Incidents 2004	0	113	5	8	27	6	16	205	180	145	203	71	49	22	128	104
	Rate 2003	0	1624.0	81.2	81.2	588.7	142.1	243.6	3106.0	4364.6	2375.2	3857.1	812.0	1177.4	710.5	2354.9	1989.4
	Rate 2004	0.0	2294.0	101.5	162.4	548.1	121.8	324.8	4161.6	3654.1	2943.6	4121.0	1441.3	994.7	446.6	2598.5	2111.2
	2001 population 4,926	Trend 2004^	-	41.3%	-	-	ns	-	-	ns	-16.3%	ns	ns	77.5%	ns	ns	ns
2016 [Redfern]	Incidents 2003	1	383	12	21	202	6	54	272	62	100	582	59	134	487	117	412
	Incidents 2004	2	410	17	19	209	2	56	259	41	115	399	41	152	296	121	406
	Rate 2003	8.9	3419.0	107.1	187.5	1803.2	53.6	482.1	2428.1	553.5	892.7	5195.5	526.7	1196.2	4347.4	1044.5	3677.9
	Rate 2004	17.9	3660.1	151.8	169.6	1865.7	17.9	499.9	2312.1	366.0	1026.6	3561.9	366.0	1356.9	2642.4	1080.2	3624.4
	2001 population 11,202	Trend 2004^	-	ns	-	-	ns	-	ns	-33.9%	ns	-31.4%	ns	ns	-39.2%	ns	ns
2017 [Waterloo, Zetland]	Incidents 2003	1	202	8	14	53	2	15	190	116	94	252	20	72	180	97	237
	Incidents 2004	0	183	4	12	80	0	31	180	64	82	178	16	68	100	76	293
	Rate 2003	17.3	3490.6	138.2	241.9	915.8	34.6	259.2	3283.2	2004.5	1624.3	4354.6	345.6	1244.2	3110.4	1676.2	4095.4
	Rate 2004	0.0	3162.3	69.1	207.4	1382.4	0.0	535.7	3110.4	1105.9	1417.0	3075.9	276.5	1175.0	1728.0	1313.3	5063.1
	2001 population 5,787	Trend 2004^	-	ns	-	-	ns	-	-	ns	-44.8%	ns	-29.4%	-	ns	ns	ns
2018 [Eastlakes, Roseberry]	Incidents 2003	0	98	3	2	11	2	4	111	64	78	138	14	38	30	49	139
	Incidents 2004	0	98	6	10	9	1	4	75	57	66	86	18	32	15	52	130
	Rate 2003	0.0	692.8	21.2	14.1	77.8	14.1	28.3	784.7	452.5	551.4	975.6	99.0	268.6	212.1	346.4	982.7
	Rate 2004	0.0	692.8	42.4	70.7	63.6	7.1	28.3	530.2	403.0	466.6	608.0	127.3	226.2	106.0	367.6	919.1
	2001 population 14,145	Trend 2004^	-	ns	-	-	-	-	-	ns	ns	ns	-37.7%	-	ns	-	ns

Table 1: Sydney LGA Postcodes - Percentage change in number of recorded incidents over the 24 months to December 2004 - continued
Major offences showing statistically significant trends in Sydney postcodes connecting with Sydney LGA

		<i>Murder</i>	<i>Assault</i>	<i>Sexual assault</i>	<i>Indecent assault, act of indecency and other sexual offences</i>	<i>Robbery without a weapon</i>	<i>Robbery with a firearm</i>	<i>Robbery with a weapon not a firearm</i>	<i>Break and enter - dwelling</i>	<i>Break and enter - non-dwelling</i>	<i>Motor vehicle theft</i>	<i>Steal from motor vehicle</i>	<i>Steal from retail store</i>	<i>Steal from dwelling</i>	<i>Steal from person</i>	<i>Fraud</i>	<i>Malicious damage to property</i>
Sydney LGA	Rate 2004	2.1	3497.3	141.5	193.9	745.7	42.5	331.1	1466.7	1440.5	1125.7	4482.2	1054.9	742.9	3391.9	2752.3	2546.4
	Trend 2004[^]	-	ns	ns	35.6%	-19.5%	-34.1%	ns	-10.5%	-12.3%	ns	-18.8%	ns	ns	-26.8%	ns	ns
Sydney SD	Rate 2004	1.1	901.5	50.8	68.9	98.6	14.3	51.6	812.9	367.4	555.1	957.7	284.5	294.5	285.9	563.1	1253.1
	Trend 2004[^]	ns	ns	ns	ns	-23.5%	ns	-17.1%	-12.6%	-19.1%	-5.0%	-7.8%	-15.3%	-12.7%	-25.3%	ns	2.8%
NSW	Rate 2004	1.0	1,031.7	63.1	79.5	73.7	9.8	38.8	832.1	444.0	495.6	892.3	279.5	393.0	213.4	469.0	1,415.0
	Trend 2004[^]	ns	ns	ns	ns	-21.5%	ns	-12.6%	-10.7%	-18.4%	-5.0%	-8.8%	16.8%	-10.4%	-23.9%	ns	ns

2000	DAWES POINT	2008	DARLINGTON	2012	STRAWBERRY HILLS	2018	EASTLAKES
2000	HAYMARKET	2009	PYRMONT	2014	BEACONSFIELD	2018	ROSEBERY
2000	MILLERS POINT	2010	DARLINGHURST	2015	ALEXANDRIA	2021	CENTENNIAL PARK
2000	ST JAMES	2010	SURRY HILLS	2015	BEACONSFIELD	2021	PADDINGTON
2000	SYDNEY	2011	ELIZABETH BAY	2015	EVELEIGH	2037	GLEBE
2000	SYDNEY SOUTH	2011	GARDEN ISLAND	2016	REDFERN	2042	ENMORE
2000	THE ROCKS	2011	KINGS CROSS	2017	WATERLOO	2042	NEWTOWN
2007	BROADWAY	2011	POTTS POINT	2017	WATERLOO DC	2043	ERSKINEVILLE
2007	ULTIMO	2011	RUSHCUTTERS BAY	2017	ZETLAND	2050	CAMPERDOWN
2008	CHIPPENDALE	2011	WOOLLOOMOOLOO			2050	MISSSENDEN ROAD

Notes:

[^] Shows the results of a statistical test for a significant upward or downward trend in the recorded monthly number of criminal incidents over 24 months to December 2004.

The 'ns' indicates that there was no significant upward or downward trend, and the '-' indicates that the number of incidents was too small for a reliable trend test to be performed.

No trend test was applied if either 12 month period had less than 20 incidents recorded for the offence type.