
NSW SOUTH WALES CUSTODY STATISTICS

QUARTERLY UPDATE
MARCH 2014



NSW Bureau of Crime
Statistics and Research

CONTENTS

This report presents 24 months of reception, discharge and custody population data and comparisons between the current and previous quarter for age, gender, indigenous status, most serious offence and the average length of stay.

Separate figures are presented for juveniles and adults.

The counting unit is a custodial episode. An individual will be counted multiple times in a period if they have multiple custodial episodes in that period.

SCOPE

The data in this report are extracted from the Corrective Services NSW (CSNSW) Offender Information Management System (OIMS) and the Juvenile Justice NSW (JJNSW) Client Information Management System (CIMS).

The adult custody population figures include only those persons held in gazetted correctional centres managed by CSNSW. This includes: persons managed as forensic patients, persons held after expiry of their sentence awaiting deportation and persons awaiting extradition to another jurisdiction. Persons in the Special Purpose Centre at Long Bay Correctional Centre are not included.

In addition to gazetted correctional centres, CSNSW manages a number of police/court cell complexes. This report excludes persons received into and then discharged from a CSNSW-managed 24 hour police/court cell complex without entering a gazetted correctional centre. Adults refused police bail but not held in a gazetted correctional centre are not included.

Custody population figures are counted as at midnight on the last day of the month or quarter as appropriate. Reception and discharge figures are those during each month or quarter as appropriate.

Refer to the Glossary at the back of the report for detailed descriptions of the terms used in the report.

ACKNOWLEDGEMENTS

Juvenile custody data are provided by the Research and Information Section of JJNSW. Adult custody data are provided by the Corporate Research, Evaluation and Statistics (CRES) section of CSNSW. The Bureau is grateful for the support provided by both areas in supplying the data for this report and advising on its interpretation.

NOTE

The adult custody data presented in this report will differ from data reported by CSNSW due to data extract timing differences.

Contents

PART 1 JUVENILES **3**

SECTION 1.1	JUVENILE CUSTODY POPULATION	4
1.1.1	By Month	4
1.1.2	By Legal Status	4
1.1.3	By Indigenous Status.....	5
1.1.4	By Legal Status (Indigenous Only).....	5
1.1.5	Profile	6
1.1.6	Legal Status Changed from Remand to Sentenced	6
1.1.7	Remand Population by Most Serious Offence	7
1.1.8	Sentenced Population by Most Serious Offence.....	8
SECTION 1.2	JUVENILE CUSTODY RECEPTIONS	9
1.2.1	By Month	9
1.2.2	By Legal Status	9
SECTION 1.3	JUVENILE CUSTODY DISCHARGES	10
1.3.1	By Month	10
1.3.2	Length of Stay	10
1.3.3	By Discharge Type	11
1.3.4	By Discharge Type (Excluding Bail).....	11
1.3.5	Ratio Of Receptions To Discharges.....	12

PART 2 ADULTS **13**

SECTION 2.1	ADULT CUSTODY POPULATION	14
2.1.1	By Month	14
2.1.2	By Indigenous Status.....	14
2.1.3	Remand Population	15
2.1.4	Sentenced Population.....	15
2.1.5	Indigenous Remand Population	16
2.1.6	Indigenous Sentenced Population	16
2.1.7	Profile	17
2.1.8	Legal Status Changed from Remand to Sentenced	17
2.1.9	Remand Population by Most Serious Offence	18
2.1.10	Sentenced Population by Most Serious Offence.....	19
SECTION 2.2	ADULT CUSTODY RECEPTIONS	20
2.2.1	By Month	20
2.2.2	Remand Receptions	21
2.2.3	Sentenced Receptions.....	21
SECTION 2.3	ADULT CUSTODY DISCHARGES	22
2.3.1	By Month	22
2.3.2	Length of Stay	22
2.3.3	By Discharge Type	23
2.3.4	Ratio Of Receptions To Discharges.....	23

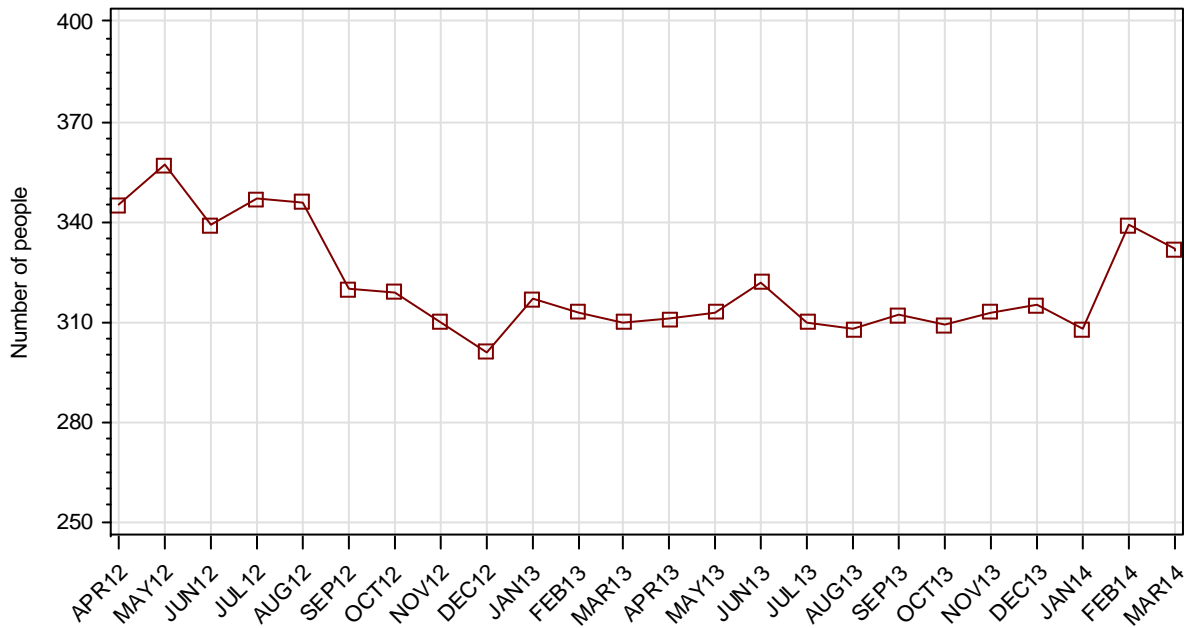
PART 3 DATA TABLES **24**

PART 4 GLOSSARY **29**

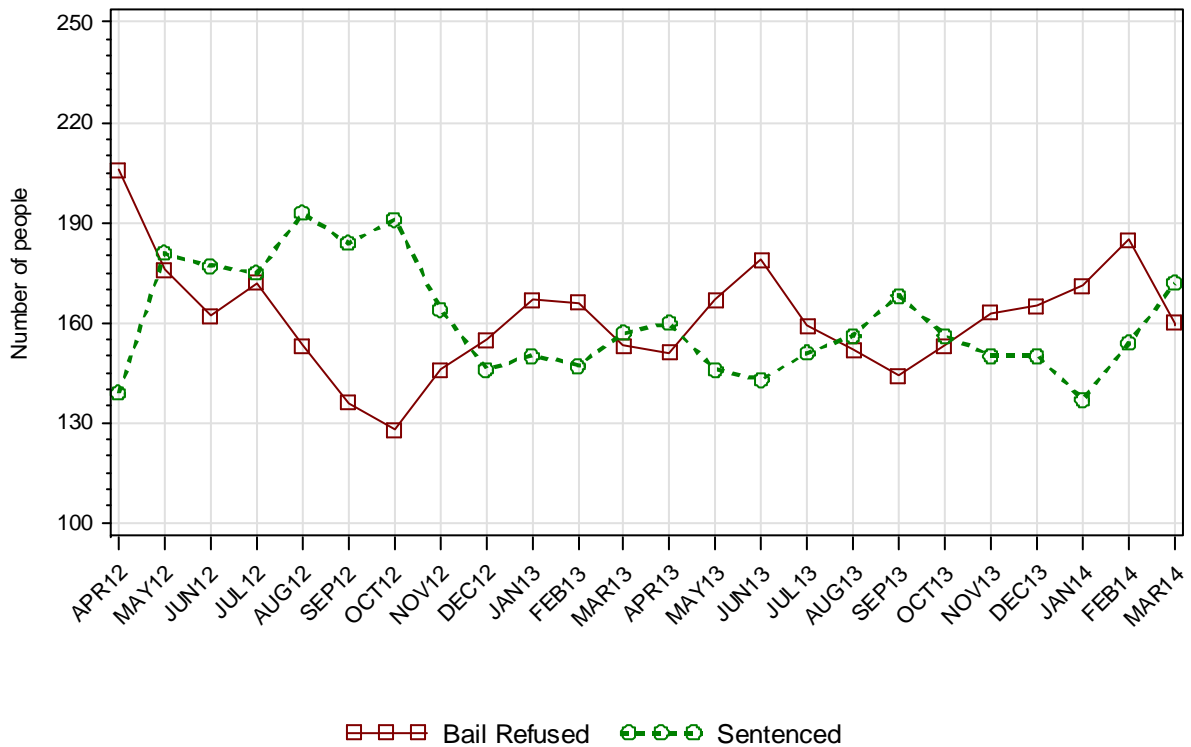
Part 1 JUVENILES

SECTION 1.1 JUVENILE CUSTODY POPULATION

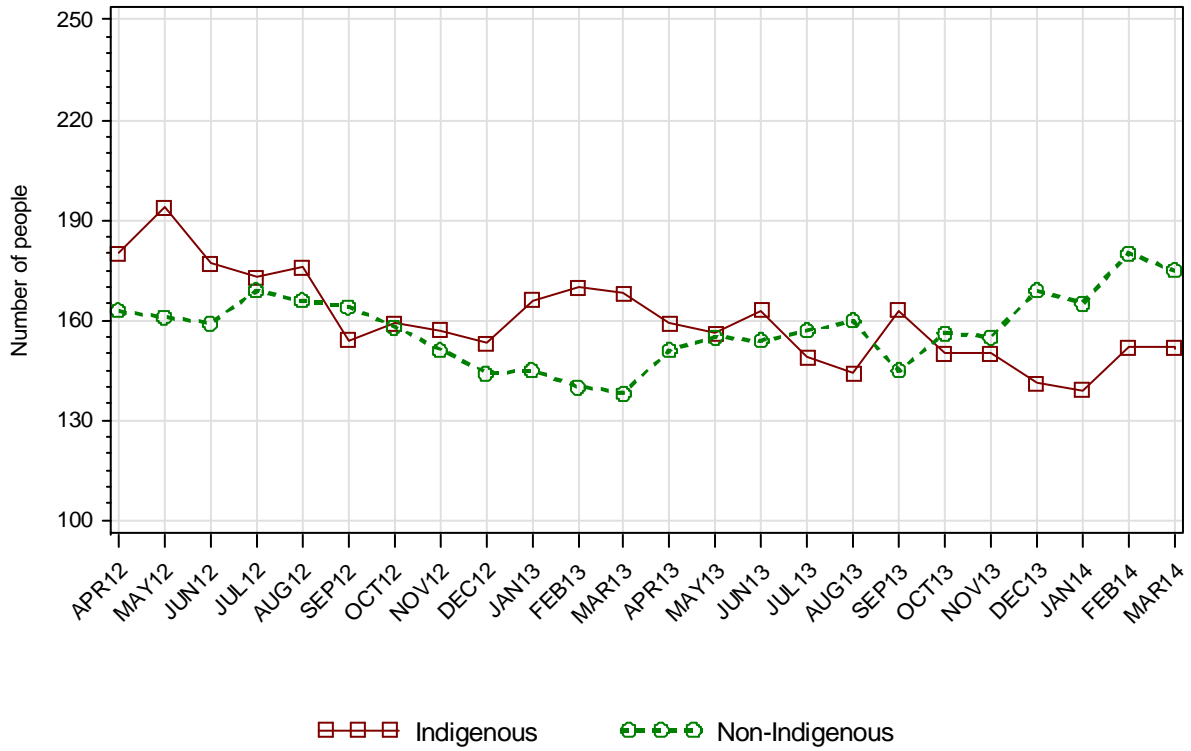
1.1.1 JUVENILE CUSTODY POPULATION AT END OF MONTH



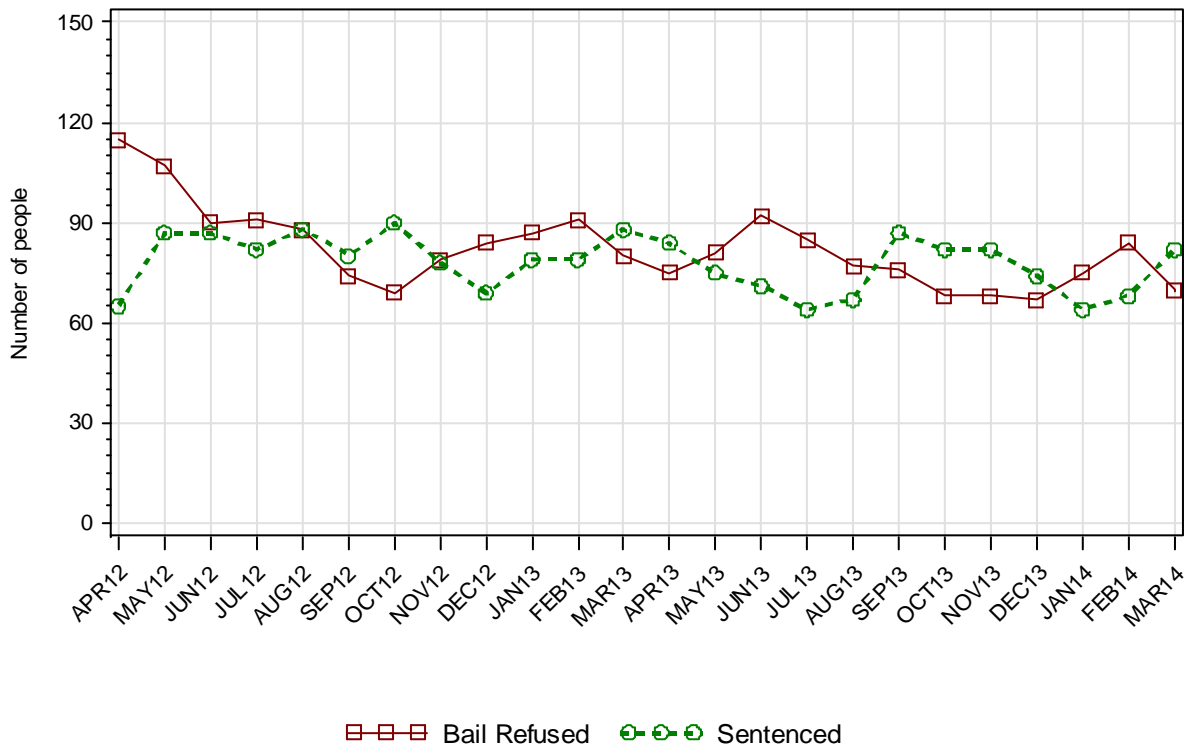
1.1.2 JUVENILE CUSTODY POPULATION BY LEGAL STATUS



1.1.3 JUVENILE CUSTODY POPULATION BY INDIGENOUS STATUS



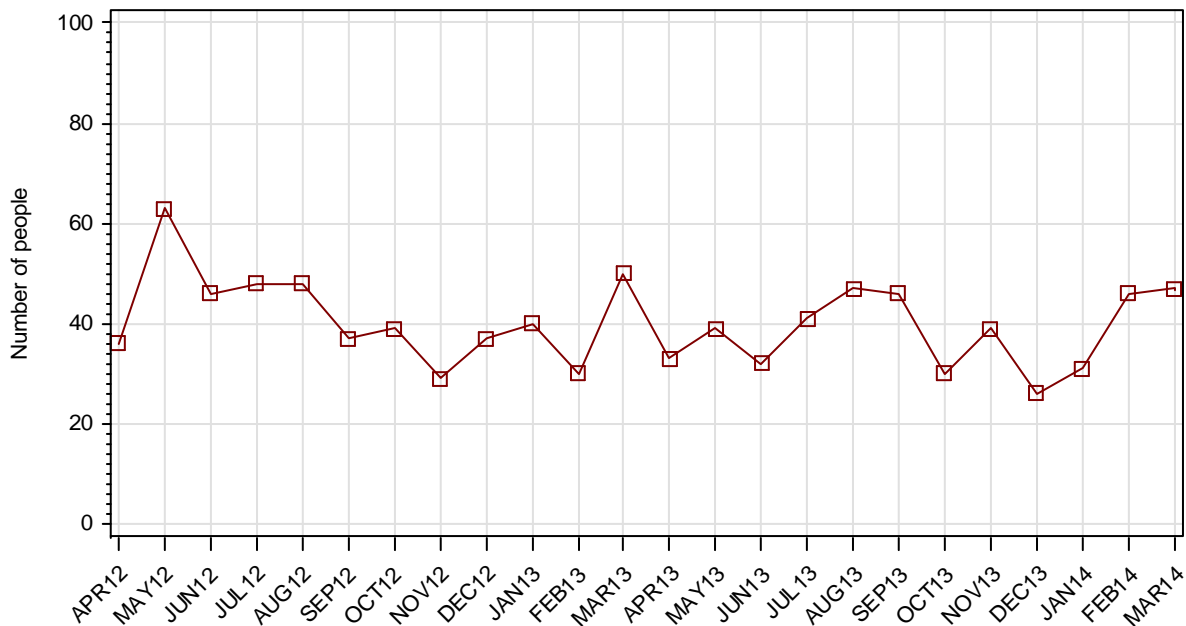
1.1.4 INDIGENOUS JUVENILE CUSTODY POPULATION BY LEGAL STATUS



1.1.5 JUVENILE CUSTODY PROFILE AT END OF QUARTER

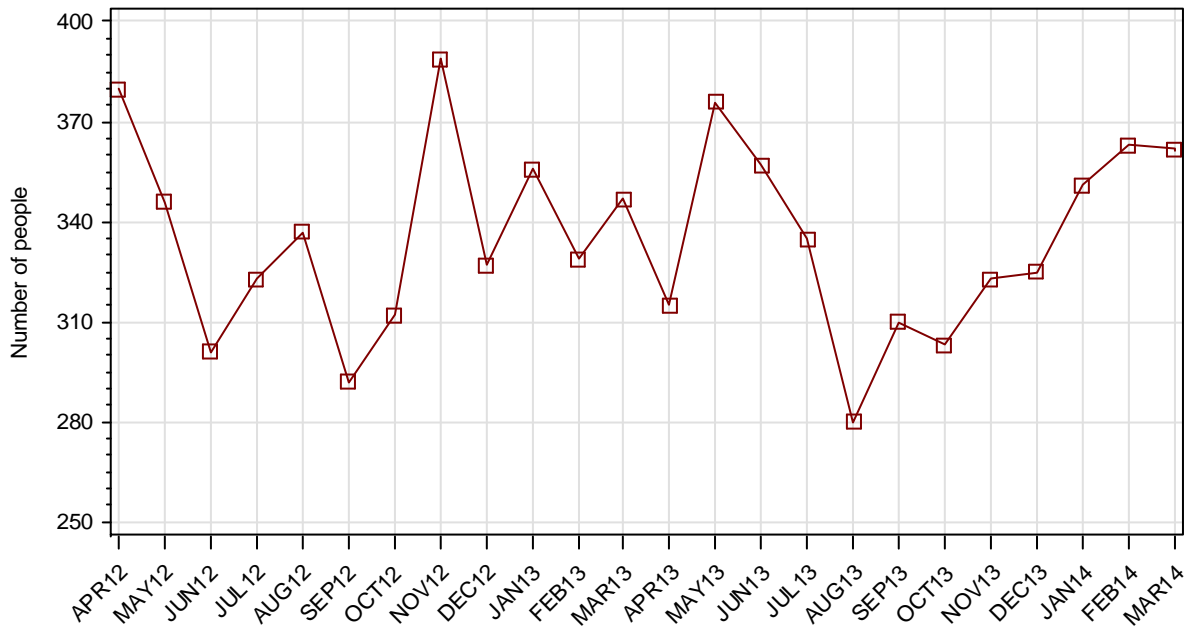
		Police Bail Refused		Court Bail Refused		Sentenced		Total	
		DEC13	MAR14	DEC13	MAR14	DEC13	MAR14	DEC13	MAR14
Total Male	Count	5	5	144	142	140	163	289	310
	Avg Age	15.4	15.4	16.1	16.1	16.8	16.8	16.4	16.4
Total Female	Count	2	1	14	12	10	9	26	22
	Avg Age	16.5	14.0	15.5	15.4	16.9	16.8	16.1	15.9
Indigenous Male	Count	1	5	59	58	70	78	130	141
	Avg Age	13.0	15.4	15.7	15.7	16.4	16.4	16.0	16.1
Indigenous Female	Count	--	1	7	6	4	4	11	11
	Avg Age	--	14.0	14.9	15.2	17.3	16.5	15.7	15.5
Total	Count	7	6	158	154	150	172	315	332
	Avg Age	15.7	15.2	16.1	16.0	16.8	16.8	16.4	16.4

1.1.6 JUVENILES IN CUSTODY: NUMBER WHOSE LEGAL STATUS CHANGED DURING MONTH FROM REMAND TO SENTENCED

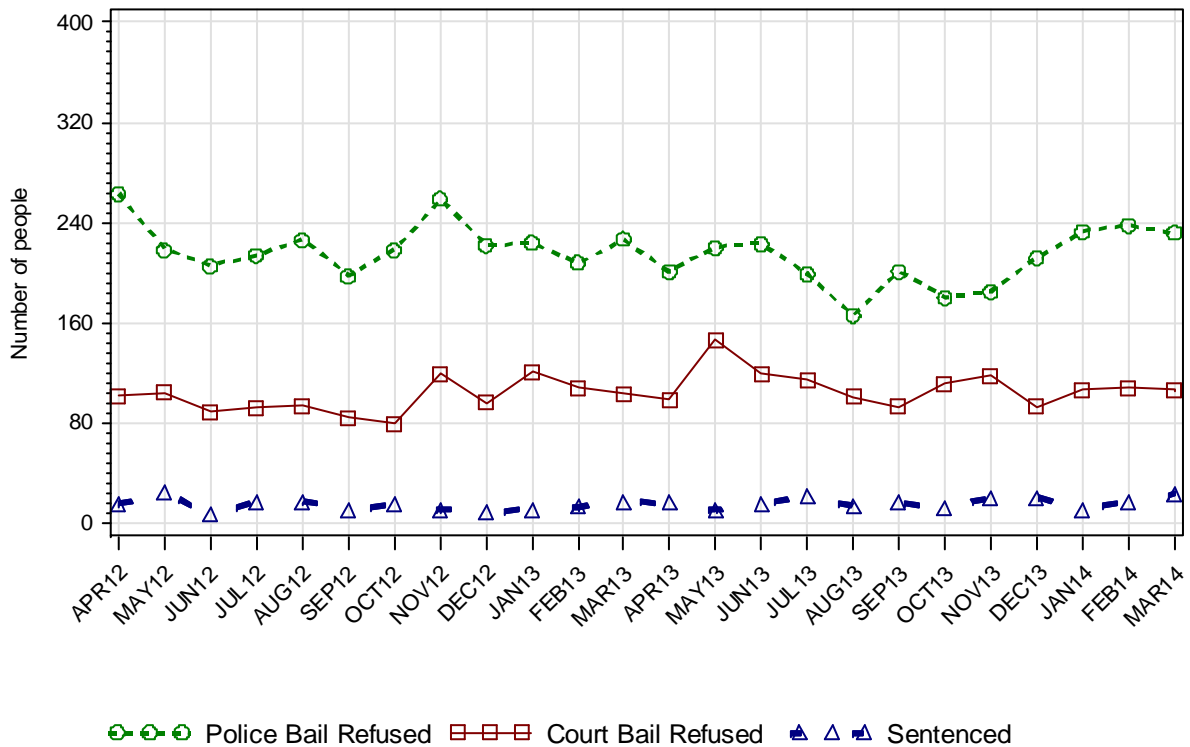


SECTION 1.2 JUVENILE CUSTODY RECEPTIONS

1.2.1 JUVENILES RECEIVED INTO CUSTODY DURING MONTH

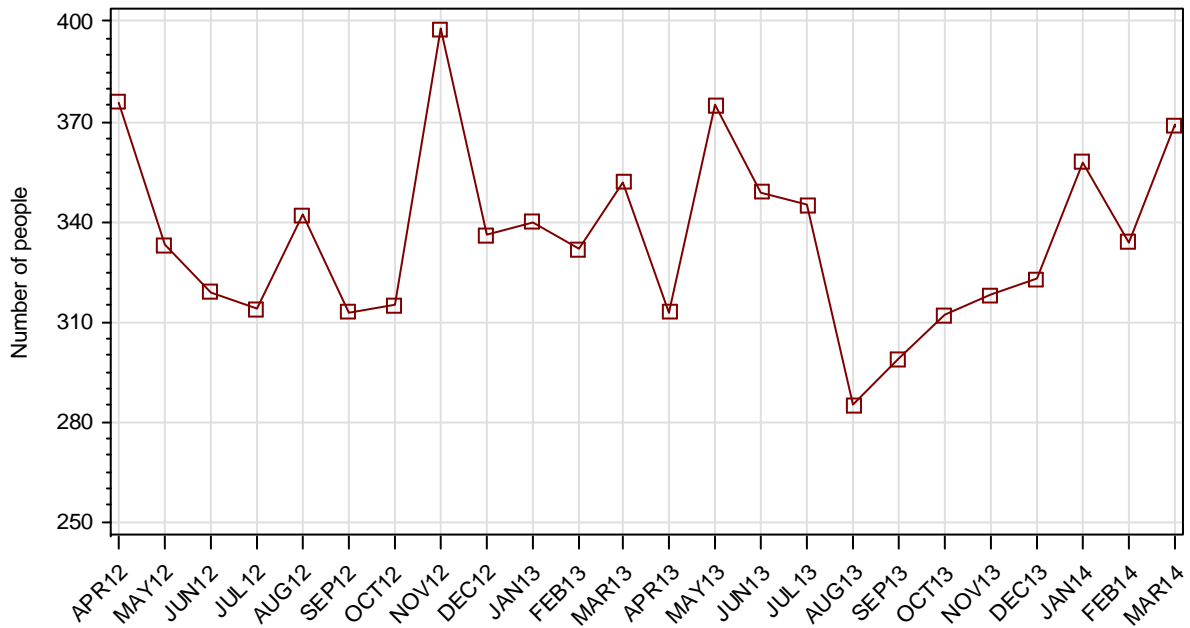


1.2.2 JUVENILES RECEIVED INTO CUSTODY BY LEGAL STATUS



SECTION 1.3 JUVENILE CUSTODY DISCHARGES

1.3.1 JUVENILES DISCHARGED FROM CUSTODY DURING MONTH

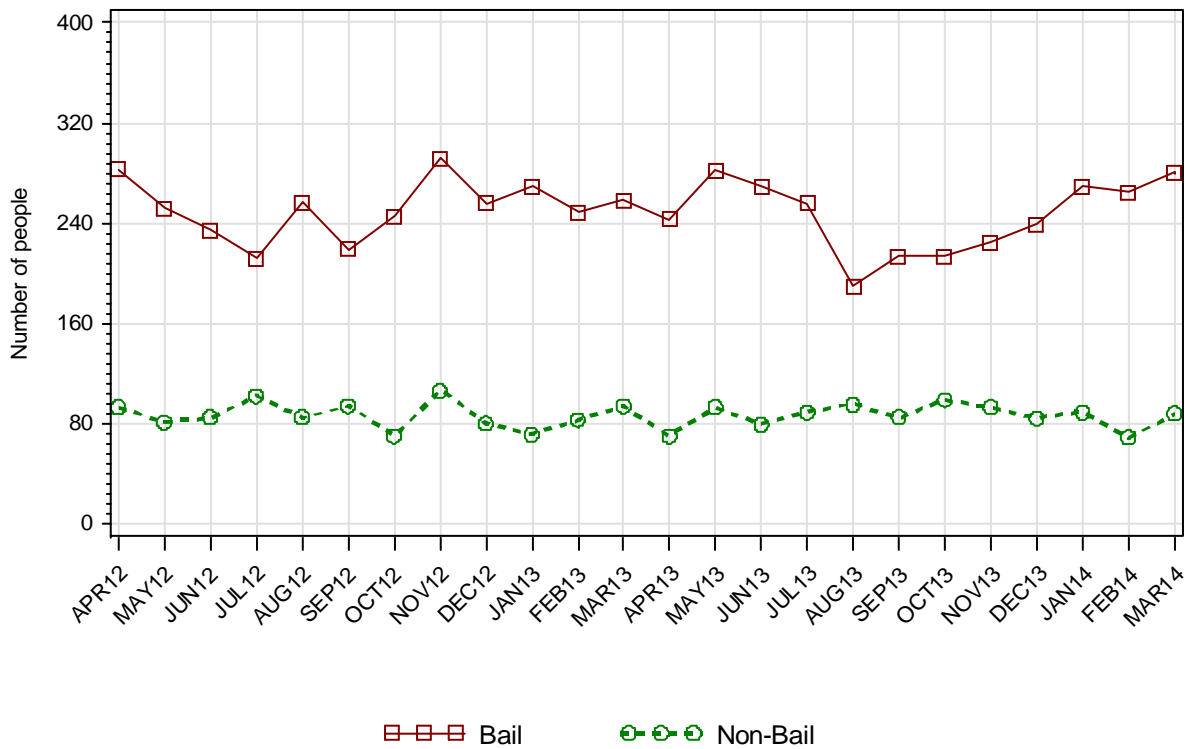


1.3.2 AVERAGE LENGTH OF STAY FOR JUVENILES DISCHARGED FROM CUSTODY EACH QUARTER

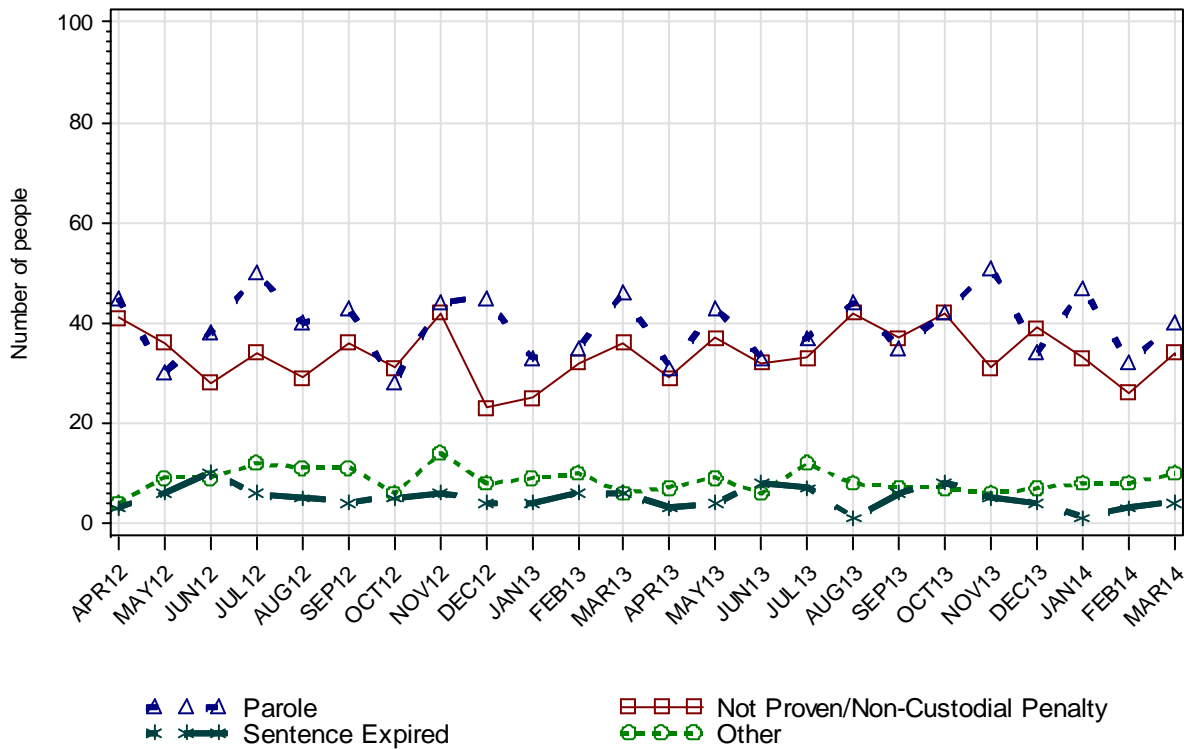
		Remand Custody Only		Sentenced Custody Only		Remand to Sentenced Custody	
		DEC13	MAR14	DEC13	MAR14	DEC13	MAR14
Total Male	Avg Days	8.8	8.6	124.2	124.5	154.6	182.3
	Number	606	712	42	45	110	87
Total Female	Avg Days	4.7	3.9	46.0	61.2	223.5	75.7
	Number	176	199	7	9	12	9
Indigenous Male	Avg Days	11.1	11.3	110.6	74.7	160.5	155.6
	Number	242	323	25	27	65	37
Indigenous Female	Avg Days	6.5	5.4	50.0	83.0	53.8	69.0
	Number	63	70	4	4	5	2
Total	Avg Days	7.9	7.6	113.0	114.0	161.3	172.3
	Number	782	911	49	54	122	96

Note: Length of Stay for Remand to Sentenced Custody is from the date of reception on remand to date of discharge after serving sentence.

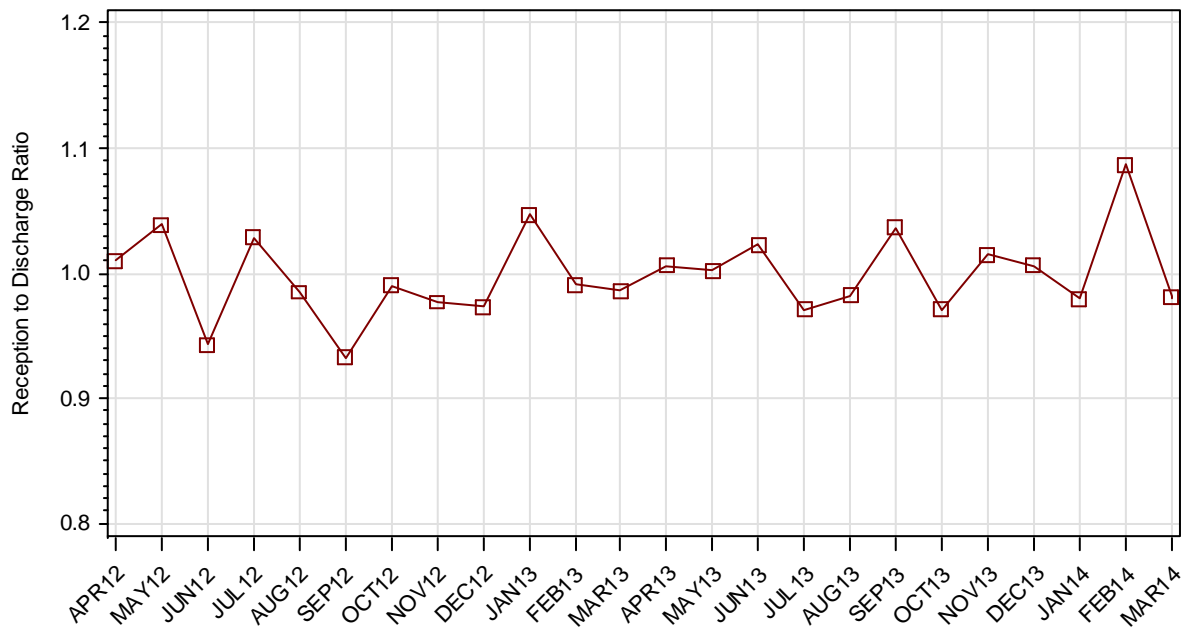
1.3.3 JUVENILES BY DISCHARGE TYPE



1.3.4 JUVENILES BY DISCHARGE TYPE (EXCLUDING BAIL)



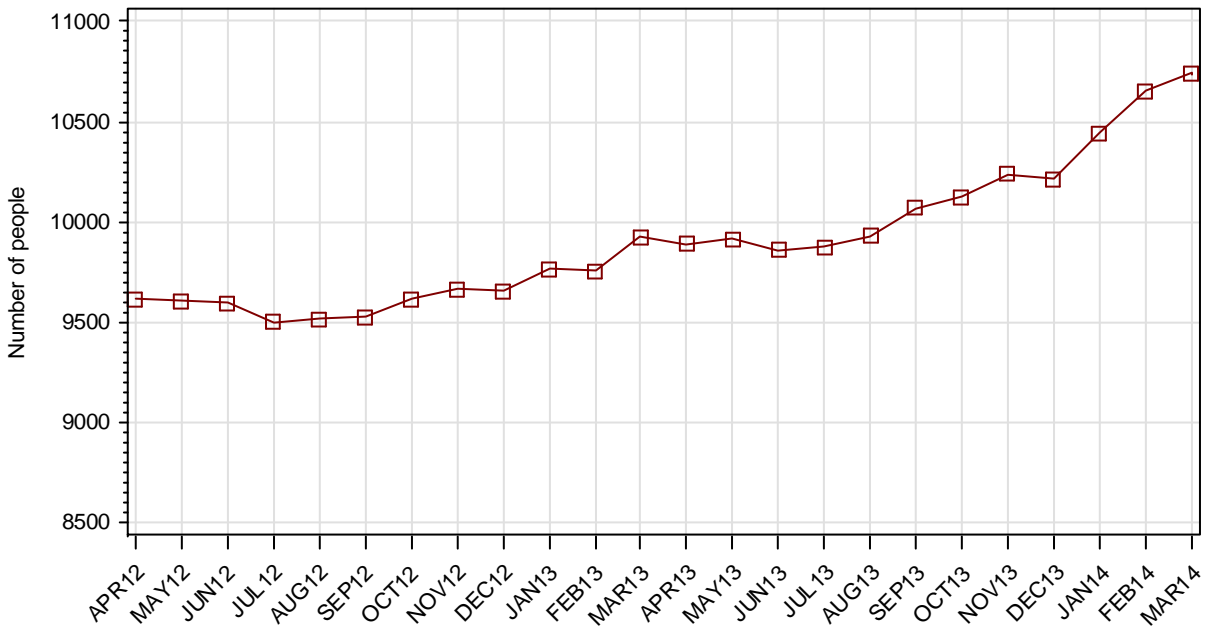
1.3.5 RATIO OF JUVENILE RECEPTIONS TO DISCHARGES



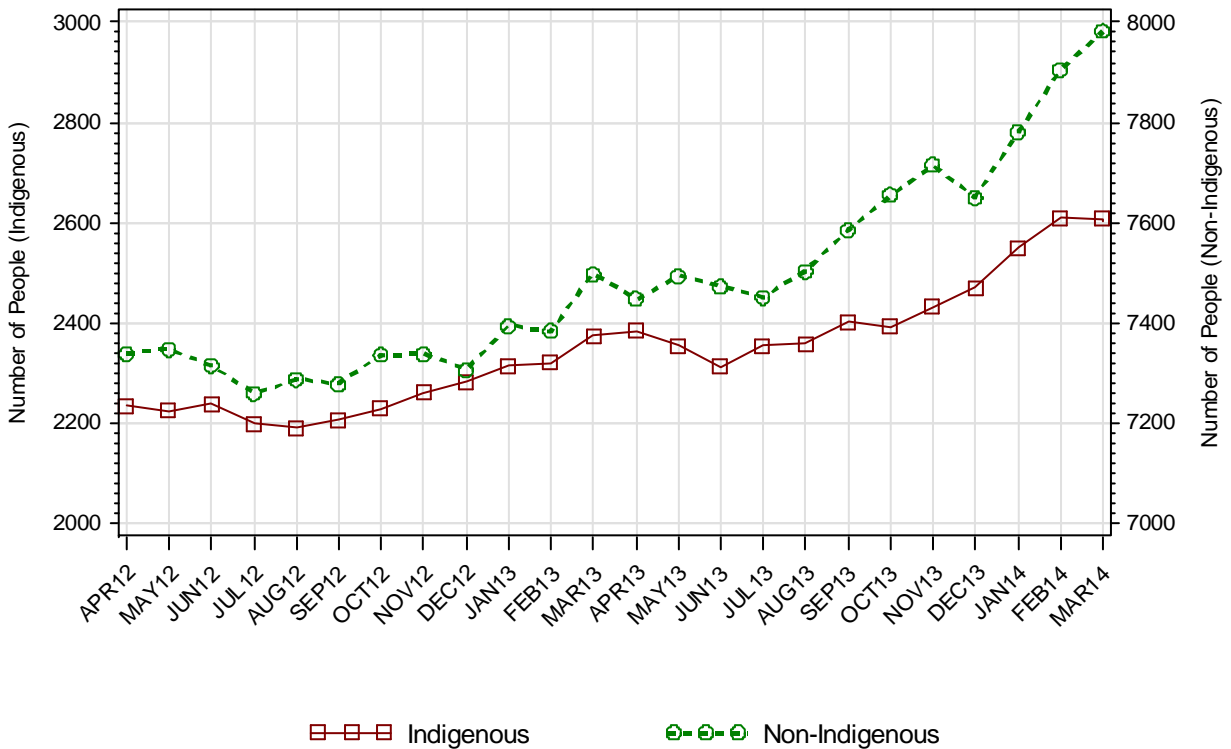
Part 2 ADULTS

SECTION 2.1 ADULT CUSTODY POPULATION

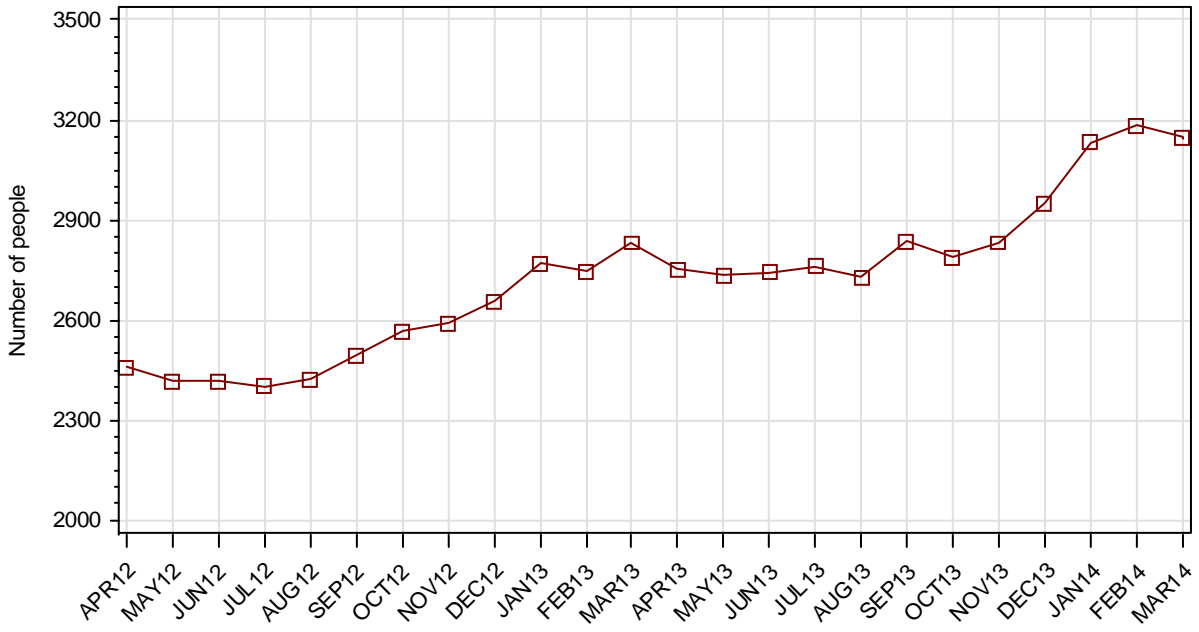
2.1.1 ADULT CUSTODY POPULATION AT END OF MONTH



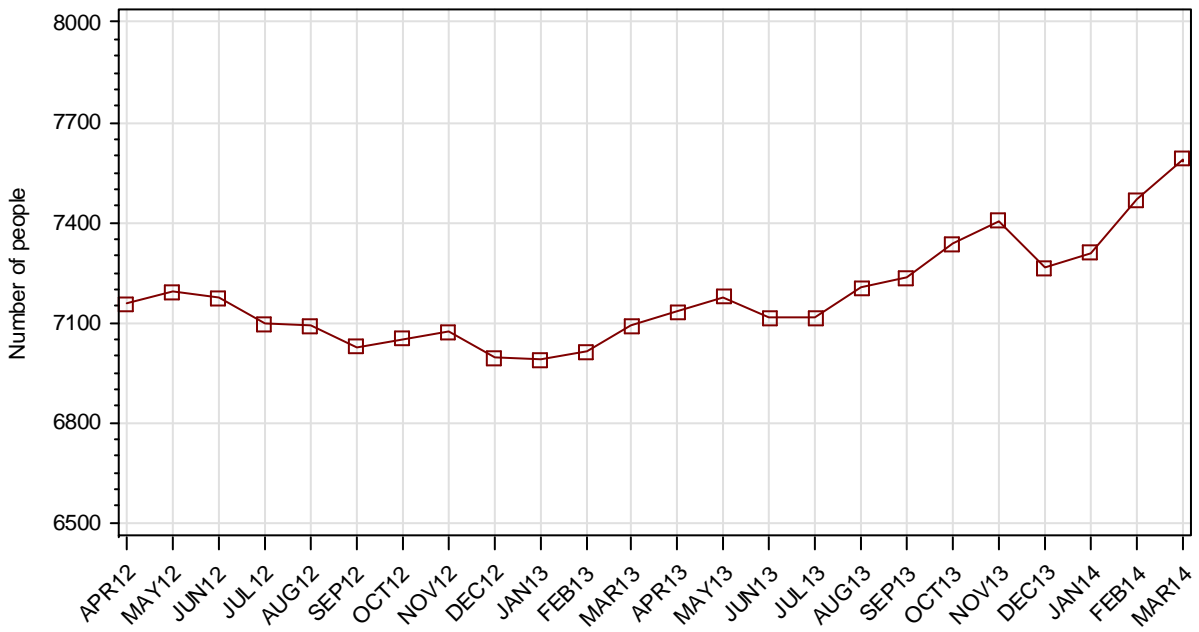
2.1.2 ADULT CUSTODY POPULATION BY INDIGENOUS STATUS



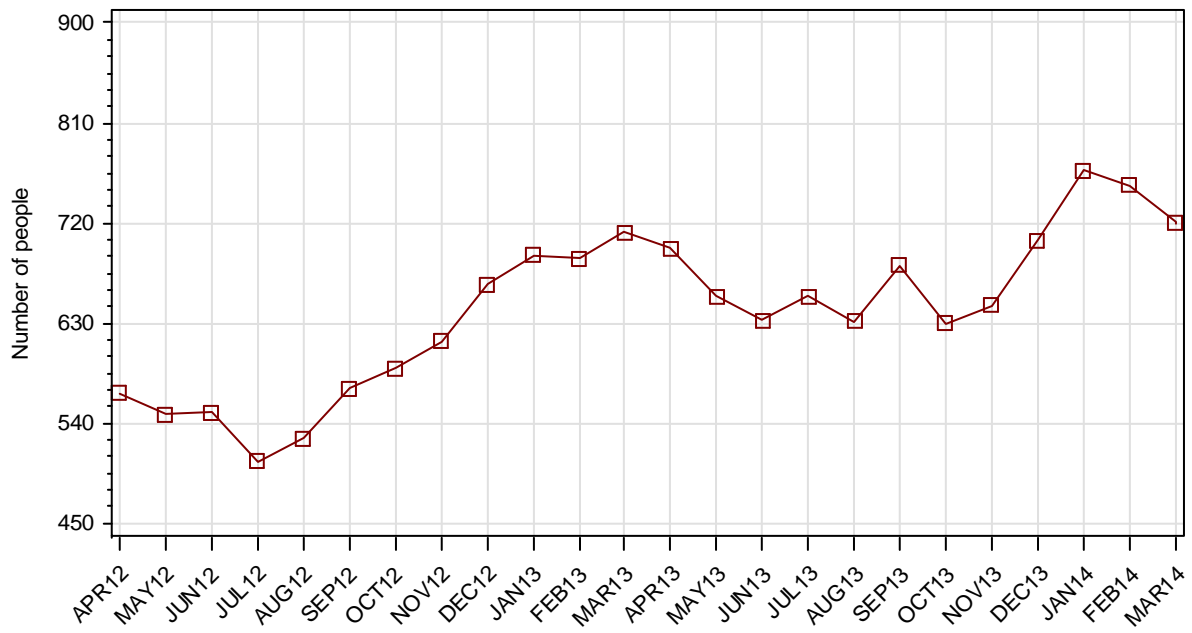
2.1.3 ADULT REMAND POPULATION



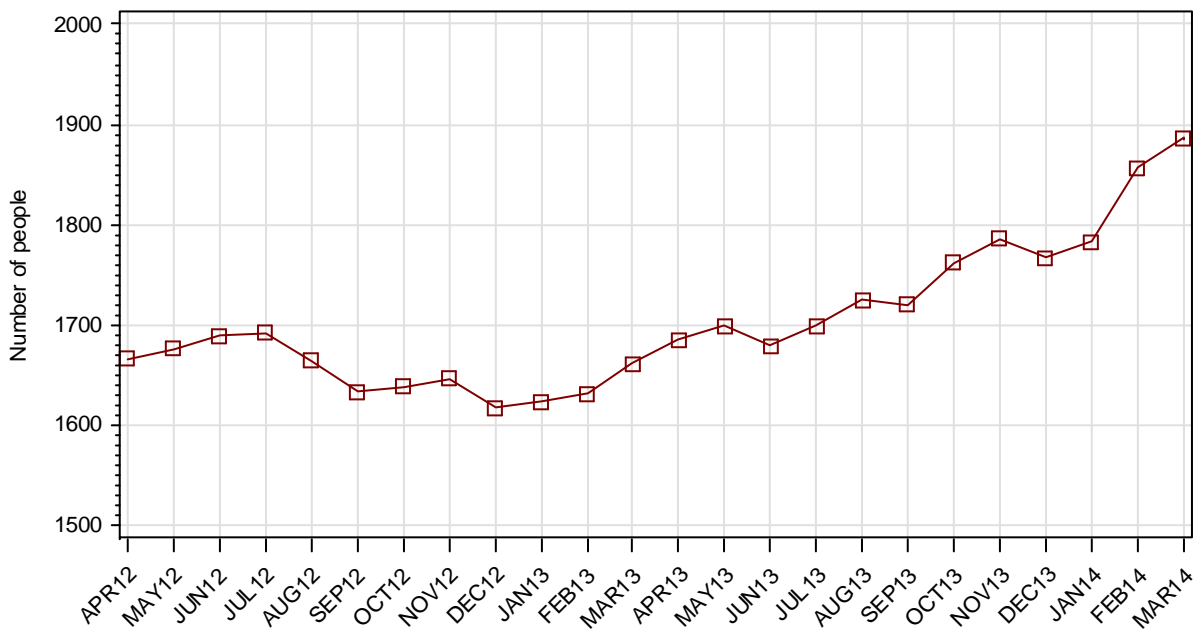
2.1.4 ADULT SENTENCED POPULATION



2.1.5 INDIGENOUS ADULT REMAND POPULATION



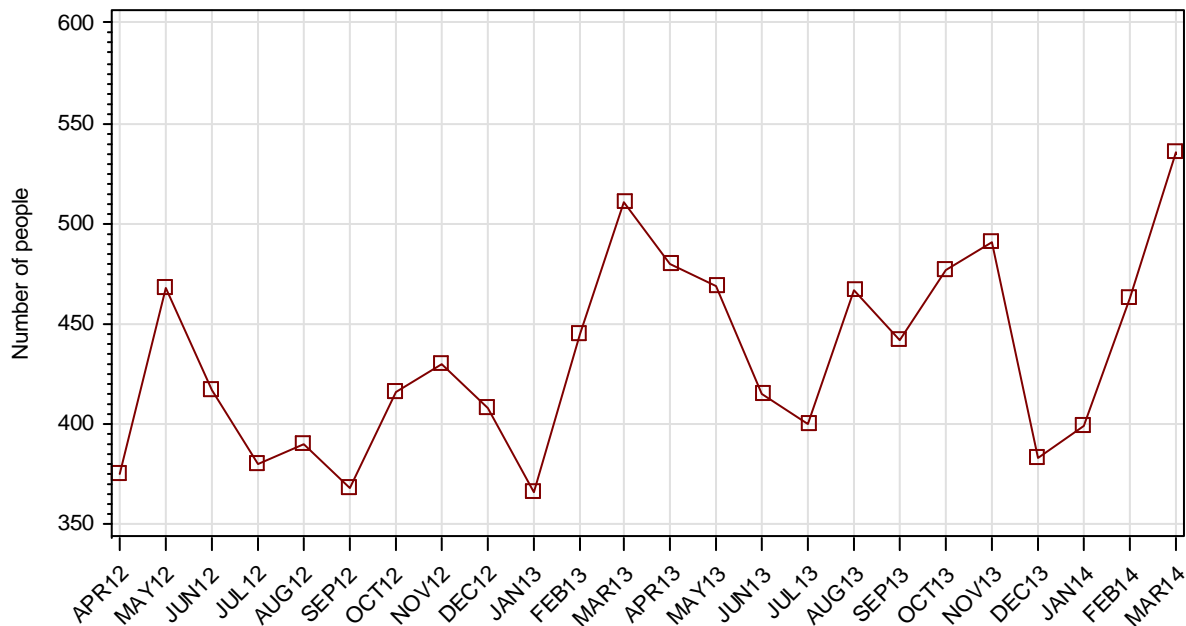
2.1.6 INDIGENOUS ADULT SENTENCED POPULATION



2.1.7 ADULT CUSTODY PROFILE AT END OF QUARTER

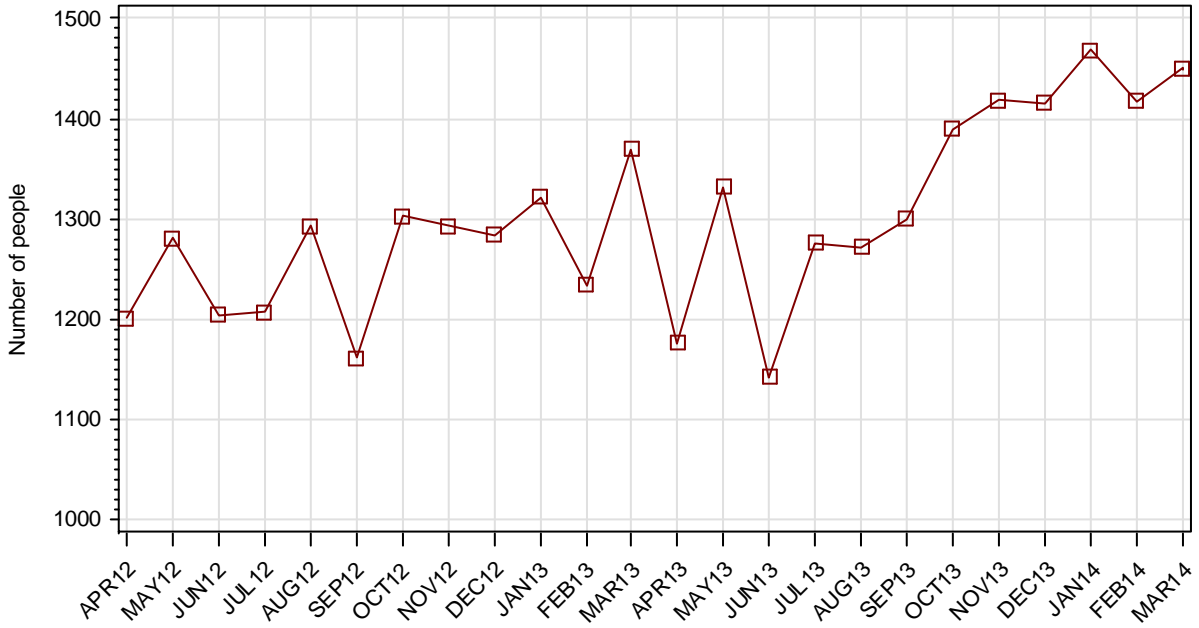
		Remand		Sentenced		Total	
		DEC13	MAR14	DEC13	MAR14	DEC13	MAR14
Total Male	Count	2691	2861	6805	7110	9496	9971
	Avg Age	33.8	33.8	36.2	36.3	35.5	35.5
Total Female	Count	258	288	458	482	716	770
	Avg Age	33.5	33.8	36.8	37.0	35.6	35.8
Indigenous Male	Count	617	620	1616	1727	2233	2347
	Avg Age	30.2	30.7	31.8	31.9	31.4	31.6
Indigenous Female	Count	87	101	151	160	238	261
	Avg Age	32.0	32.9	33.2	33.3	32.8	33.1
Total	Count	2949	3149	7263	7592	10212	10741
	Avg Age	33.8	33.8	36.2	36.3	35.5	35.6

2.1.8 ADULTS IN CUSTODY: NUMBER WHOSE LEGAL STATUS CHANGED DURING MONTH FROM REMAND TO SENTENCED

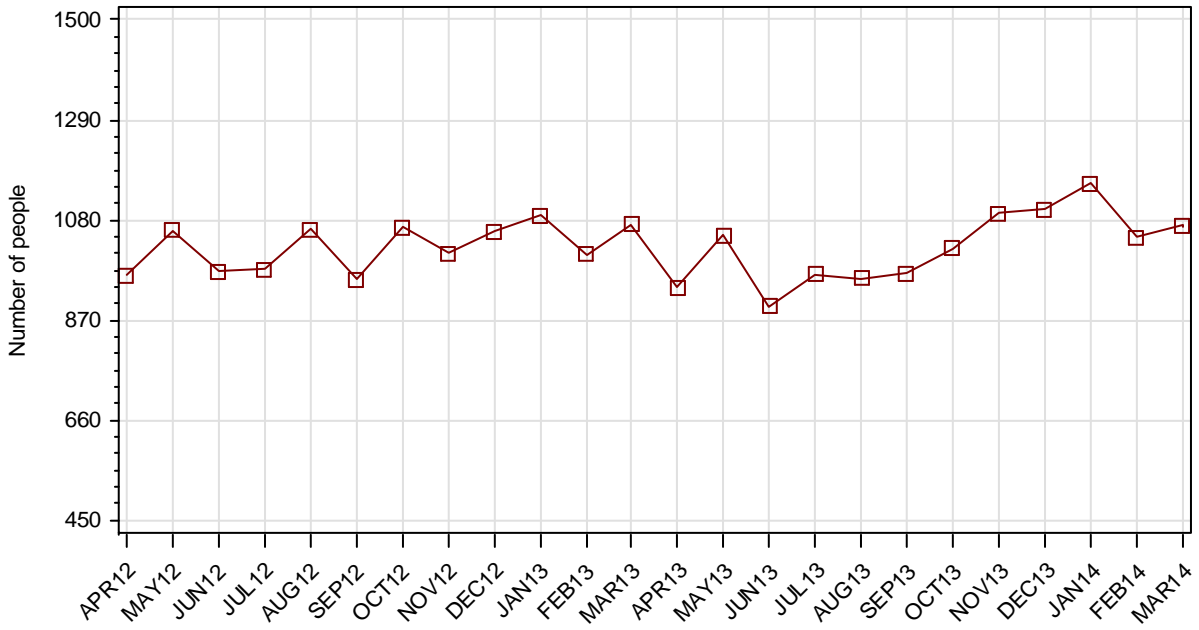


SECTION 2.2 ADULT CUSTODY RECEPTIONS

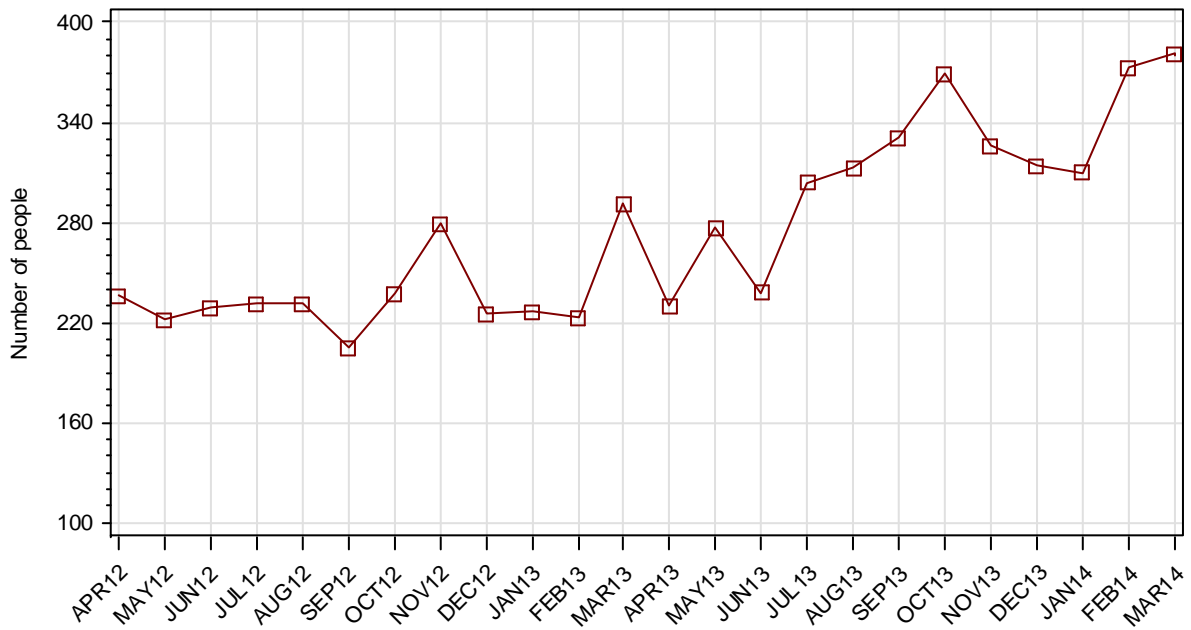
2.2.1 ADULTS RECEIVED INTO CUSTODY DURING MONTH



2.2.2 ADULT REMAND RECEPTIONS

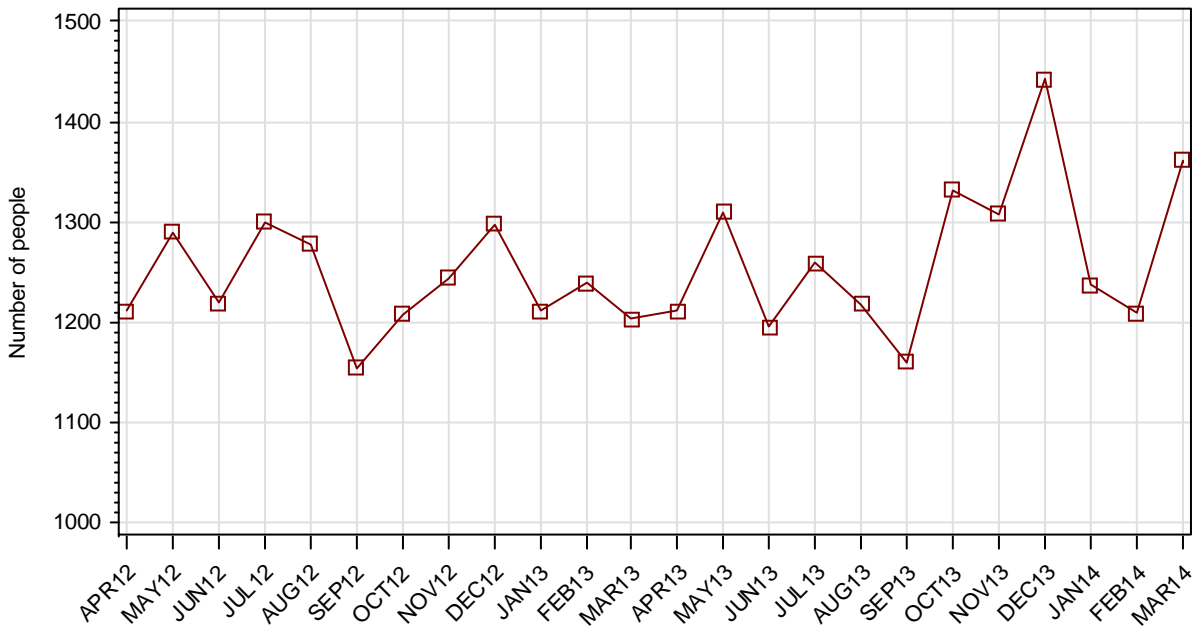


2.2.3 ADULT SENTENCED RECEPTIONS



SECTION 2.3 ADULT CUSTODY DISCHARGES

2.3.1 ADULTS DISCHARGED FROM CUSTODY DURING MONTH

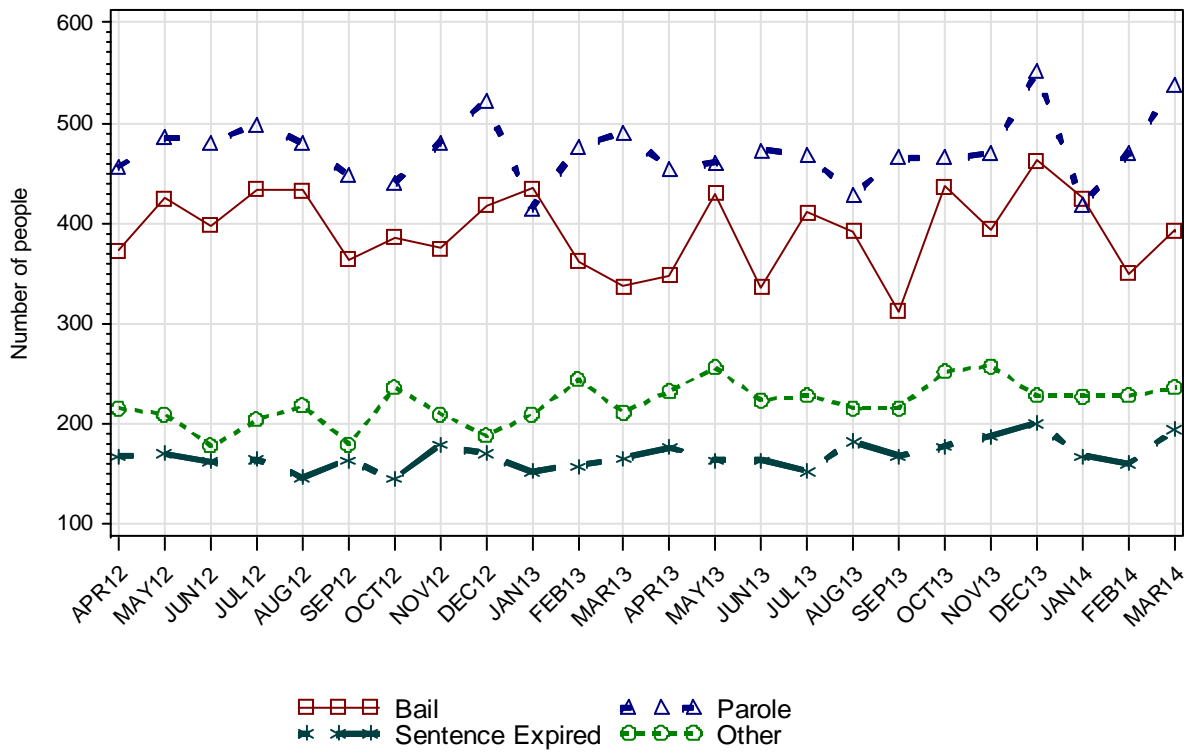


2.3.2 AVERAGE LENGTH OF STAY FOR ADULTS DISCHARGED FROM CUSTODY EACH QUARTER

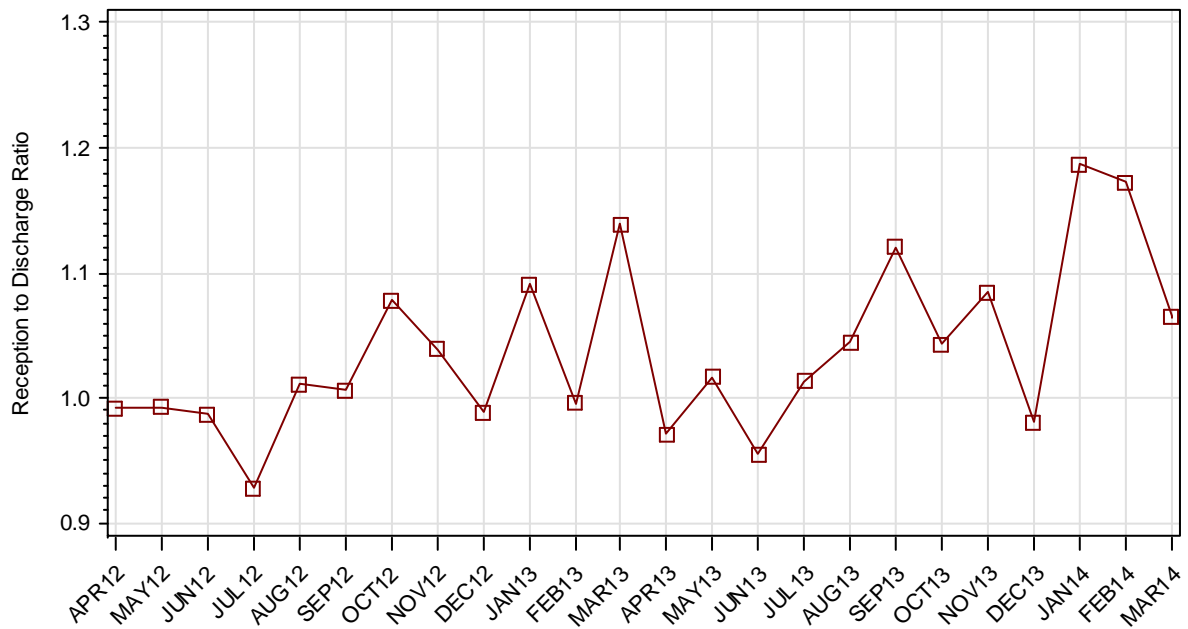
		Remand Custody Only		Sentenced Custody Only		Remand to Sentenced Custody	
		DEC13	MAR14	DEC13	MAR14	DEC13	MAR14
Total Male	Avg Days	44.6	40.6	217.6	218.3	455.7	429.1
	Number	1416	1354	906	828	1234	1119
Total Female	Avg Days	29.5	29.8	159.1	173.8	206.7	255.3
	Number	290	270	109	111	128	126
Indigenous Male	Avg Days	39.1	42.0	200.7	206.5	349.2	356.8
	Number	372	344	258	244	341	323
Indigenous Female	Avg Days	28.1	25.5	106.8	124.1	185.3	185.1
	Number	112	94	34	40	52	58
Total	Avg Days	42.0	38.8	211.3	213.0	432.3	411.5
	Number	1706	1624	1015	939	1362	1245

Note: length of stay for Remand to Sentenced Custody is from the date of reception on remand to date of discharge after serving sentence.

2.3.3 ADULTS BY DISCHARGE TYPE



2.3.4 RATIO OF ADULT RECEPTIONS TO DISCHARGES



Part 3 DATA TABLES

Juvenile	1.In Custody										Remand to Sent
	Total	Legal Status			Indigenous			Indigenous Legal Status			
		Court Bail Ref.	Police Bail Ref.	Sent	Yes	No	Unk	Court Bail Ref.	Police Bail Ref.	Sent	
APR12	345	200	6	139	180	163	2	113	2	65	36
MAY12	357	170	6	181	194	161	2	103	4	87	63
JUN12	339	156	6	177	177	159	3	86	4	87	46
JUL12	347	165	7	175	173	169	5	88	3	82	48
AUG12	346	148	5	193	176	166	4	85	3	88	48
SEP12	320	131	5	184	154	164	2	72	2	80	37
OCT12	319	117	11	191	159	158	2	64	5	90	39
NOV12	310	137	9	164	157	151	2	74	5	78	29
DEC12	301	152	3	146	153	144	4	84	0	69	37
JAN13	317	161	6	150	166	145	6	84	3	79	40
FEB13	313	156	10	147	170	140	3	87	4	79	30
MAR13	310	146	7	157	168	138	4	76	4	88	50
APR13	311	148	3	160	159	151	1	73	2	84	33
MAY13	313	158	9	146	156	155	2	77	4	75	39
JUN13	322	173	6	143	163	154	5	89	3	71	32
JUL13	310	151	8	151	149	157	4	81	4	64	41
AUG13	308	143	9	156	144	160	4	74	3	67	47
SEP13	312	143	1	168	163	145	4	76	0	87	46
OCT13	309	145	8	156	150	156	3	66	2	82	30
NOV13	313	159	4	150	150	155	8	67	1	82	39
DEC13	315	158	7	150	141	169	5	66	1	74	26
JAN14	308	166	5	137	139	165	4	71	4	64	31
FEB14	339	180	5	154	152	180	7	82	2	68	46
MAR14	332	154	6	172	152	175	5	64	6	82	47

Juvenile	2.Receptions							3.Discharges									Ratio Rec/ Dis
	Tot	Legal Status			Indigenous			Tot	Legal Status					Indigenous			
		Court Bail Ref.	Police Bail Ref.	Sent	Yes	No	Unk		Bail	Not Proven Non-Cust.	Other	Parole	Sent Exp	Yes	No	Unk	
APR12	380	102	263	15	179	197	4	376	283	41	4	45	3	185	187	4	1.01
MAY12	346	104	218	24	159	182	5	333	252	36	9	30	6	144	184	5	1.04
JUN12	301	89	205	7	132	163	6	319	234	28	9	38	10	149	165	5	0.94
JUL12	323	92	214	17	139	177	7	314	212	34	12	50	6	144	165	5	1.03
AUG12	337	94	226	17	175	157	5	342	257	29	11	40	5	174	162	6	0.99
SEP12	292	84	197	11	130	151	11	313	219	36	11	43	4	149	151	13	0.93
OCT12	312	79	218	15	140	167	5	315	245	31	6	28	5	136	174	5	0.99
NOV12	389	119	259	11	183	196	10	398	292	42	14	44	6	185	203	10	0.98
DEC12	327	96	222	9	149	172	6	336	256	23	8	45	4	152	180	4	0.97
JAN13	356	121	224	11	147	199	10	340	269	25	9	33	4	135	197	8	1.05
FEB13	329	108	208	13	154	171	4	332	249	32	10	35	6	150	175	7	0.99
MAR13	347	103	227	17	147	192	8	352	258	36	6	46	6	150	195	7	0.99
APR13	315	98	201	16	129	181	5	313	243	29	7	31	3	138	167	8	1.01
MAY13	376	146	220	10	141	228	7	375	282	37	9	43	4	145	224	6	1.00
JUN13	357	119	223	15	155	193	9	349	270	32	6	33	8	148	195	6	1.02
JUL13	335	114	199	22	142	185	8	345	256	33	12	37	7	155	181	9	0.97
AUG13	280	101	166	13	129	148	3	285	190	42	8	44	1	135	147	3	0.98
SEP13	310	93	201	16	131	175	4	299	214	37	7	35	6	107	188	4	1.04
OCT13	303	111	180	12	110	187	6	312	213	42	7	42	8	127	178	7	0.97
NOV13	323	118	185	20	132	177	14	318	225	31	6	51	5	132	177	9	1.02
DEC13	325	93	212	20	136	180	9	323	239	39	7	34	4	145	167	11	1.01
JAN14	351	107	233	11	145	192	14	358	269	33	8	47	1	147	195	16	0.98
FEB14	363	108	238	17	178	174	11	334	265	26	8	32	3	166	160	8	1.09
MAR14	362	107	232	23	150	199	13	369	281	34	10	40	4	150	204	15	0.98

Adult	1.In Custody										Remand to Sent
	Total	Legal Status			Indigenous			Indigenous Legal Status			
		Remand	Sent	Unk	Yes	No	Unk	Remand	Sent	Unk	
APR12	9617	2458	7159	0	2233	7338	46	567	1666	0	375
MAY12	9608	2417	7191	0	2224	7347	37	548	1676	0	468
JUN12	9593	2418	7175	0	2239	7315	39	550	1689	0	417
JUL12	9500	2402	7098	0	2198	7259	43	506	1692	0	380
AUG12	9515	2422	7093	0	2191	7287	37	527	1664	0	390
SEP12	9522	2494	7028	0	2205	7277	40	572	1633	0	368
OCT12	9617	2565	7052	0	2228	7336	53	590	1638	0	416
NOV12	9666	2592	7074	0	2260	7337	69	614	1646	0	430
DEC12	9652	2658	6994	0	2282	7305	65	665	1617	0	408
JAN13	9763	2773	6990	0	2314	7393	56	691	1623	0	366
FEB13	9758	2746	7012	0	2320	7384	54	689	1631	0	445
MAR13	9925	2833	7091	1	2374	7497	54	712	1661	1	511
APR13	9890	2753	7134	3	2384	7448	58	697	1685	2	480
MAY13	9912	2734	7178	0	2353	7493	66	654	1699	0	469
JUN13	9859	2744	7115	0	2312	7472	75	633	1679	0	415
JUL13	9876	2762	7114	0	2353	7451	72	654	1699	0	400
AUG13	9930	2727	7203	0	2357	7503	70	632	1725	0	467
SEP13	10070	2837	7233	0	2402	7585	83	682	1720	0	442
OCT13	10128	2790	7338	0	2392	7656	80	630	1762	0	477
NOV13	10239	2833	7406	0	2432	7716	91	646	1786	0	491
DEC13	10212	2949	7263	0	2471	7650	91	704	1767	0	383
JAN14	10443	3133	7310	0	2550	7781	112	767	1783	0	399
FEB14	10652	3184	7468	0	2611	7906	135	754	1857	0	463
MAR14	10741	3149	7592	0	2608	7983	150	721	1887	0	536

Adult	2.Receptions							3.Discharges							Ratio Rec/ Dis	
	Tot	Legal Status			Indigenous			Tot	Legal Status				Indigenous			
		Remand	Sent	Unk	Yes	No	Unk		Bail	Other	Parole	Sent Exp	Yes	No		Unk
APR12	1201	965	236	0	353	834	14	1211	373	215	456	167	360	825	26	0.99
MAY12	1281	1059	222	0	350	910	21	1290	425	209	486	170	359	901	30	0.99
JUN12	1204	974	229	1	331	838	35	1219	398	178	481	162	316	870	33	0.99
JUL12	1207	976	231	0	332	847	28	1300	434	204	498	164	373	903	24	0.93
AUG12	1293	1062	231	0	353	916	24	1278	433	218	481	146	360	888	30	1.01
SEP12	1161	955	205	1	337	798	26	1154	364	179	448	163	323	808	23	1.01
OCT12	1303	1064	237	2	394	863	46	1208	386	236	441	145	371	804	33	1.08
NOV12	1293	1012	279	2	386	870	37	1244	375	209	481	179	354	869	21	1.04
DEC12	1284	1056	225	3	388	851	45	1298	418	188	522	170	366	883	49	0.99
JAN13	1322	1091	227	4	392	893	37	1211	435	209	415	152	360	805	46	1.09
FEB13	1234	1008	223	3	369	836	29	1239	362	244	476	157	363	845	31	1.00
MAR13	1370	1071	291	8	404	933	33	1203	337	211	490	165	350	820	33	1.14
APR13	1176	938	230	8	355	786	35	1211	348	232	455	176	345	835	31	0.97
MAY13	1332	1048	277	7	384	906	42	1310	430	256	461	163	415	861	34	1.02
JUN13	1142	899	238	5	303	794	45	1195	336	223	473	163	344	815	36	0.96
JUL13	1276	967	304	5	396	830	50	1259	411	228	468	152	355	851	53	1.01
AUG13	1272	958	313	1	365	863	44	1218	392	215	429	182	361	811	46	1.04
SEP13	1300	969	331	0	391	870	39	1160	312	215	466	167	346	788	26	1.12
OCT13	1390	1021	369	0	395	944	51	1332	437	252	466	177	405	873	54	1.04
NOV13	1419	1093	326	0	411	940	68	1308	394	257	470	187	371	880	57	1.08
DEC13	1416	1102	314	0	432	917	67	1443	463	228	552	200	393	983	67	0.98
JAN14	1468	1158	310	0	423	973	72	1237	425	227	418	167	344	842	51	1.19
FEB14	1418	1045	373	0	417	930	71	1209	350	228	471	160	356	805	48	1.17
MAR14	1451	1070	381	0	400	971	80	1362	393	236	539	194	403	894	65	1.07

Part 4 GLOSSARY

Adult

A person held in custody in a gazetted correctional centre managed by Corrective Services NSW (CSNSW). Persons may have been remanded in custody after being refused bail or sentenced to a custodial order for a proven offence.

The adult figures in this report include the small number of 16 and 17 year old males held in the Kariiong Juvenile Correctional Centre.

ANZSOC

The Australian Bureau of Statistics Australian and New Zealand Standard Offence Classification (ANZSOC) groups criminal offences into 16 broad divisions:

1. Homicide and related offences
2. Acts intended to cause injury
3. Sexual assault and related offences
4. Dangerous or negligent acts endangering persons
5. Abduction, harassment and other offences against the person
6. Robbery, extortion and related offences
7. Unlawful entry with intent/burglary, break and enter
8. Theft and related offences
9. Fraud, deception and related offences
10. Illicit drug offences
11. Prohibited and regulated weapons and explosives offences
12. Property damage and environmental pollution
13. Public order offences
14. Traffic and vehicle regulatory offences
15. Offences against justice procedures, government security and government operations
16. Miscellaneous offences

For further information see:

<http://www.abs.gov.au/AUSSTATS/abs@.nsf/DetailsPage/1234.02011>

Note that shortened titles are used in this report.

Average length of stay

The length of stay is the duration of the custodial episode, from the date of reception to the date of discharge.

The average length of stay (in days) is presented for three types of custodial episodes:

Remand custody only - the person entered custody after being refused bail and was then discharged from custody without having been sentenced. Most commonly discharged after being granted bail, other reasons include criminal charges not proven, receiving a non-custodial penalty for a proven offence or being transferred interstate or from a juvenile to an adult prison or vice versa.

Sentenced custody only - persons who entered custody only after being sentenced to a custodial penalty by a court. These persons had either been granted bail, or bail had been dispensed with, pending finalisation of their charges.

Remand to sentenced custody - persons who had been remanded in custody prior to having a custodial sentence imposed by a court. The length of stay for these people is the entire time from reception on remand to discharge after serving the custodial sentence.

Note: Persons initially remanded in custody but then granted bail prior to having a custodial penalty imposed by a court are counted as two custodial episodes: one of remand custody only and one of sentenced custody only.

Bail

Under the provisions of the *Bail Act 1978*, police and courts may grant or refuse to grant bail to alleged offenders. The grant of bail takes into consideration the alleged offence and offender. Bail is granted at the offence level and so a person may be granted bail for one offence and refused bail for another offence.

Persons refused bail (and small numbers granted bail but unable to meet the bail conditions set by a court) are remanded into custody pending further court action.

Juvenile custody population data in this report disaggregates persons remanded into custody into those refused police bail and refused court bail. This is because all juveniles refused police bail are held in Juvenile Justice centres whereas not all adults refused police bail are held in gazetted correctional centres or 24 hour police cell complexes.

Control order

See Custodial sentence

Corrective Services NSW

Corrective Services NSW (CSNSW) is part of the NSW Department of Attorney General and Justice with responsibilities including the supervision of people remanded in custody pending the finalisation of criminal charges and offenders sentenced to a custodial order.

See <http://www.correctiveservices.nsw.gov.au/> for further information.

The Corporate Research, Evaluation and Statistics (CRES) section of CSNSW have provided the adult custody data for this report and advised on its interpretation.

Court bail refused

See Bail

Custodial episode

A custodial episode is the time between the reception into and discharge from custody. An individual may have multiple custodial episodes within the reporting period. A change in legal status between the reception and discharge date, for example changing from being bail refused to being sentenced to a custodial order, does not count as a new custodial episode.

Custodial sentence

Courts may impose a custodial sentence for a proven offence. For adults this is a term of imprisonment under the *Crimes (Sentencing Procedure) Act 1999*. For young people this is a control order of up to two years duration or a term of imprisonment to be served partly or wholly as a juvenile under the *Children (Criminal Proceedings) Act 1987*. A person may be given custodial sentences for multiple proven offences.

While the majority of persons held under sentence in a correctional centre are sentenced under the *Crimes (Sentencing Procedure) Act 1999*, offenders whose parole has been revoked by the State Parole Authority, persons sentenced under the *Commonwealth Crimes Act 1914*, those sentenced under the *Mental Health (Forensic Provision) Act 1990*, small numbers of persons held under immigration orders awaiting deportation following expiry of their sentence and persons sentenced under legislation in other states or territories are also managed by CSNSW.

Custody population

Persons held in custody in a JJNSW juvenile justice centre or a CSNSW gazetted correctional centre, whether remanded or sentenced. Custody population figures are counted as at midnight on the last day of the month or quarter as appropriate.

Discharge type

The type of reason why persons were discharged from custody:

Bail - courts granted the person bail pending the finalisation of their criminal charge(s).

Parole - the person was released to parole after serving the non-parole period of custodial sentence(s).

Sentence expired - the person was released after serving the entire period of all custodial sentence(s) imposed. This includes some persons who served both the non-parole and parole components of their sentence(s) in custody.

Not proven / non-custodial penalty - juvenile data only - the person was released after criminal charges were not proven or after the court imposed a non-custodial penalty for a proven offence, e.g. good behaviour bond.

Other - includes persons transferred to the NSW Drug Court, interstate or from a juvenile to an adult prison or vice versa and deceased persons. Includes adults released after criminal charges were not proven, after the court imposed a non-custodial penalty for a proven offence and where the specific nature of the court's final non-custodial disposal is unknown.

Discharges

Persons legally discharged from JJNSW or CSNSW custody in accordance with a court order (including any State Parole Authority order). For example - to parole, on expiry of a sentence or having been granted bail. Note that persons whose legal status changed from remand to sentenced or the reverse are not counted as discharges as they have not been discharged from custody.

Imprisonment

See Custodial sentence.

Indigenous status

Indigenous status as self-reported on reception into custody. Persons may identify as being Aboriginal or Torres Strait Islander, neither Aboriginal nor Torres Strait Islander or may not provide this information. An inmate is recorded as indigenous if they have identified as such in the current or any previous custodial episode. Indigenous status is unknown for a small proportion of people.

Juvenile

A person held in custody in a juvenile justice centre. These centres are managed by Juvenile Justice NSW (JJNSW). A young person in juvenile custody may have been refused bail by police, refused bail by the court or sentenced to a custodial sentence.

All young persons refused bail by police must be taken to a juvenile justice centre to be held in custody pending their court appearance. Young persons refused police bail cannot be held in a police or court cell.

Note: a small number of 16 and 17 year old males are held in Kariong Juvenile Correctional Centre which is managed by CSNSW. As Kariong is a gazetted correctional centre, these young persons are counted in the adult figures in this report.

Juvenile Justice NSW

Juvenile Justice NSW (JJNSW) is part of the NSW Department of Attorney General and Justice with responsibilities including the supervision of young people remanded in custody pending the finalisation of criminal charges and young offenders sentenced to a control order/imprisonment.

See <http://www.djj.nsw.gov.au/> for further information.

The Research and Information Section of JJNSW have provided the juvenile data for this report and advised on its interpretation.

Legal status

The legal status of persons received into or held in custody:

Remand (Juvenile) - Juveniles refused bail (and small numbers granted bail but unable to meet conditions) are remanded into custody pending future court action.

Juvenile remand figures are disaggregated into:

- Police bail refused - Police have refused to grant bail to a juvenile. All juveniles refused bail by police are held in custody in a juvenile justice centre pending future court action.
- Court bail refused - the courts have refused to grant bail to a juvenile pending future court action.

Remand (Adult) - adults refused bail (and small numbers granted bail but unable to meet conditions) are remanded in custody pending future court action. Includes a small number of persons refused police bail and remanded in custody in a gazetted correctional centre. Includes persons on remand who are being managed as correctional patients under the *Mental Health (Forensic Provisions) Act 1990*.

Sentenced - the courts have imposed custodial sentence(s) for proven offence(s). This category includes persons returned to custody after breaching parole. Includes forensic patients as per the *Mental Health (Forensic Provisions) Act 1990* (ie persons found unfit to be tried and persons found not guilty due to mental illness). Persons on remand for one or more offences and sentenced for one or more offences have a legal status of sentenced.

Unknown - adults whose legal status was not recorded at the time of admission.

Legal status changed from remand to sentenced

Persons whose legal status changed from remand to sentenced upon the imposition of a custodial sentence by a court. This report shows the numbers of persons during each month who changed from being on remand to being sentenced.

Most serious offence

The most serious offence type for which each person is in custody. The offence type categories in this report are the sixteen ANZSOC Divisions, with shortened titles (See ANZSOC).

Most serious offence data is presented in a radar chart and a data table. The radar chart consists of a circle with a series of 'spokes' running from the centre of the circle to the perimeter. Each spoke represents a different offence type. The radar chart is constructed by placing a point on each spoke marking the proportion of prisoners with that offence type as their most serious offence. The higher the proportion, the closer the point to the perimeter. The points are then connected and the resulting figure inside the circle gives a picture of the distribution of most serious offence type across prisoners. A different type/colour of line is used for each quarter, making changes from quarter to quarter apparent. Note that offence types with no observations are plotted a short distance from the zero radius so that the numbers for every offence type can be observed.

The data table displays the number and proportion of persons in custody for each of the most serious offence types. The data is presented separately for sentenced persons and persons on remand:

Most Serious Offence – Adults:

The most serious offence for adults is as provided by CSNSW.

A person's most serious offence may change over the course of their custodial episode depending on offences for which they are in custody at any one time. The Most Serious Offence data presented in this report are stock data and are sourced from data extracts run two to three weeks after the end of the quarter.

The data for the previous quarter is as at the previous quarter's custody report.

Extracting the data after the same time lag each quarter reduces variability due to extract timing and so is indicative of a change in the broad offence profile of persons in custody between the end of the current and previous quarters.

Due to the way that MSO is recorded and the data extracted, it is not available for receptions or discharge data.

Most Serious Offence – Juveniles:

Most serious offence for juveniles is compiled by matching custody order records from JJNSW with sentencing and bail refused orders sourced from the JusticeLink system used by the NSW criminal courts. Data is matched using JusticeLink Proceeding Number, a unique offence identifier which is available in the JJNSW data from January 2011.

- The most serious offence for juveniles remanded in custody is the offence with the highest Median Sentence Ranking (MSR). The MSR is a ranking of ANZSOC codes and was developed by the Bureau of Crime Statistics and Research using data on sentences imposed in the NSW criminal courts. The MSR can be used to select the most serious offence when sentencing data is not available and to select most serious offence when multiple offences have the same custodial order duration. For

further information see the Bureau's Crime and Justice Bulletin No.142 "Measuring Offence Seriousness":

[www.bocsar.nsw.gov.au/lawlink/bocsar/ll_bocsar.nsf/vwFiles/CJB142.pdf/\\$file/CJB142.pdf](http://www.bocsar.nsw.gov.au/lawlink/bocsar/ll_bocsar.nsf/vwFiles/CJB142.pdf/$file/CJB142.pdf)

- The most serious offence for sentenced juveniles is the offence with the longest custodial order. For juveniles with more than one offence type with the same custodial order duration, the offence with the highest Median Sentence Ranking is selected as the most serious offence.
- Juveniles sentenced to a custodial order after breaching a non-custodial penalty (eg a suspended sentence, Community Service Order or good behaviour bond) have a most serious offence type of *Justice procedure offence* rather than the type of offence for which the non-custodial penalty was originally imposed (eg robbery/extortion, drug offences).

Note: this differs from the definition of most serious offence used in the Australian Bureau of Statistics Prisoners in Australia publication series (*ABS cat.no.4517.0*)

Police bail refused

See Bail.

Receptions

Persons received into Juvenile Justice custody or a gazetted correctional centre. Gazetted correctional centres are managed by CSNSW. Persons received into CSNSW custody and managed only in CSNSW 24-hour police/court cell complexes are excluded.

Ratio of receptions to discharges

The ratio of receptions to discharges. A ratio greater than 1 means there were more receptions than discharges during the month; a ratio less than 1 means there were more discharges than receptions during the month.

Remand

See Legal status.

Sentenced

See Legal status.

24 hour police/court cell complexes

In addition to gazetted correctional centres, CSNSW manage a number of police/court cell complexes. This report excludes persons received and then discharged from a CSNSW-managed 24 hour police/court cell complex without entering a gazetted correctional centre.