

---

**NEW SOUTH WALES  
RECORDED CRIME STATISTICS  
2000**

---

**Peter Doak**

**NSW BUREAU OF CRIME STATISTICS AND RESEARCH**

## ACKNOWLEDGEMENTS

The production of this report was greatly assisted by officers within the NSW Police Service. Special thanks are due to officers in Information Technology and in Corporate Information, Organisational, Policy and Development.

Several officers within the Bureau also made important contributions. In particular, Mark Ramsay was responsible for the programming and table production and Jonathan Nichol carried out the desktop publishing.

2001

Published by the NSW Bureau of Crime Statistics and Research  
Attorney General's Department  
Level 8  
St James Centre  
111 Elizabeth Street  
Sydney  
[www.lawlink.nsw.gov.au/bocsar](http://www.lawlink.nsw.gov.au/bocsar)

ISSN 1035-9044

# INTRODUCTION

This report presents data on crimes reported to or detected by NSW police from January 1998 to December 2000. The data were extracted from the Computerised Operational Policing System (COPS) of the NSW Police Service in January 2000.

The report includes an overview of trends over the most recent two-year period for a selection of serious offence categories. The overview in this year's report indicates that three of the sixteen major offence categories are trending upwards. Between 1999 and 2000, increases were recorded in the numbers of recorded incidents of break and enter – non-dwelling offences, motor vehicle theft and steal from motor vehicle offences in NSW. There are now no significant downward trends in recorded crime for these selected offence categories.

New tables have been included in the report. The tables provide monthly numbers of offenders or alleged offenders proceeded against by the type of process pursued.

Dr Don Weatherburn

**Director**

March 2001

# CONTENTS

<b>DEFINITIONS AND EXPLANATORY NOTES</b>	vi
<b>OVERVIEW OF MAJOR TRENDS</b>	1
Figure 1 Murder	5
Figure 2 Assault	6
Figure 3 Sexual assault and indecent assault, act of indecency, other sexual offences	7
Figure 4 Robbery with and without a weapon	8
Figure 5 Break and enter – dwelling and non-dwelling	9
Figure 6 Motor vehicle theft and steal from motor vehicle	10
Figure 7 Steal from retail store, from dwelling and from person	11
Figure 8 Fraud	12
Figure 9 Malicious damage to property	13
Figure 10 Charge	14
Figure 8 Court Attendance Notice	14
Figure 8 Summons	15
Figure 9 Field Court Attendance Notice	15
<b>MONTHLY TRENDS IN RECORDED CRIMINAL INCIDENTS, 1998, 1999 AND 2000, NEW SOUTH WALES</b>	17
Table 1.1 Monthly trends in recorded criminal incidents, 1998 New South Wales: Type of offence	18
Table 1.2 Monthly trends in recorded criminal incidents, 1999 New South Wales: Type of offence	22
Table 1.3 Monthly trends in recorded criminal incidents, 2000 New South Wales: Type of offence	26
<b>MONTHLY TRENDS IN METHODS OF PROCEEDING AGAINST ALLEGED OFFENDERS, 1998, 1999 AND 2000, NEW SOUTH WALES</b>	31
Table 2.1 Monthly trends in methods of proceeding against alleged offenders, 1998 New South Wales: Type of process	32
Table 2.2 Monthly trends in methods of proceeding against alleged offenders, 1999 New South Wales: Type of process	33
Table 2.3 Monthly trends in methods of proceeding against alleged offenders, 2000 New South Wales: Type of process	34
<b>CLEARED CRIMINAL INCIDENTS FOR SELECTED OFFENCES, JANUARY 1998 TO SEPTEMBER 2000, NEW SOUTH WALES</b>	35
Table 3.1 Cleared criminal incidents, selected offences, January 1998 to December 1998, New South Wales: Type of offence	36
Table 3.2 Cleared criminal incidents, selected offences, January 1999 to December 1999, New South Wales: Type of offence	37
Table 3.3 Cleared criminal incidents, selected offences, January 2000 to September 2000, New South Wales: Type of offence	38

## CONTENTS continued

### RECORDED CRIME STATISTICS IN NEW SOUTH WALES REGIONS FOR SELECTED OFFENCES, 1998, 1999 AND 2000

		39
Table 4.1	Murder	41
Table 4.2	Assault	42
Table 4.3	Sexual assault	43
Table 4.4	Indecent assault, act of indecency, other sexual offences	44
Table 4.5	Robbery without a weapon	45
Table 4.6	Robbery with a firearm	46
Table 4.7	Robbery with a weapon not a firearm.	47
Table 4.8	Break and enter – dwelling	48
Table 4.9	Break and enter – non-dwelling	49
Table 4.10	Receiving, goods in custody	50
Table 4.11	Motor vehicle theft	51
Table 4.12	Steal from motor vehicle	52
Table 4.13	Steal from retail store	53
Table 4.14	Steal from dwelling	54
Table 4.15	Steal from person	55
Table 4.16	Fraud	56
Table 4.17	Malicious damage to property	57
Table 4.18	Possession and/or use of cocaine	58
Table 4.19	Possession and/or use of narcotics	59
Table 4.20	Possession and/or use of cannabis	60
Table 4.21	Dealing, trafficking in cocaine	61
Table 4.22	Dealing, trafficking in narcotics	62
Table 4.23	Dealing, trafficking in cannabis	63
Table 4.24	Cultivating cannabis	64
Table 4.25	Offensive conduct	65
Table 4.26	Offensive language	66
Table 4.27	Breach Apprehended Violence Order.	67
Table 4.28	PCA driving offences	68
Table 4.29	Drive while disqualified	69
Table 4.30	Drive manner/speed dangerous	70
<b>APPENDICES</b>		71
Appendix 1	Offences included in classifications	72
Appendix 2	Maps	77
Appendix 3	Local Government Areas in Statistical Divisions	79

## DEFINITIONS AND EXPLANATORY NOTES

The data in this report are extracted from the NSW Police Service's Computerised Operational Policing System (COPS). This system is used for record-keeping for all police operations, not just for criminal matters.

In this report:

- the counting units are recorded *criminal incidents* (except for murder and manslaughter where the counting units are victims) rather than recorded *offences*, and
- the data are categorised by date of *reporting* to police (or date of detection by police) rather than date of *occurrence* of the offence.

### RECORDED CRIMINAL INCIDENTS

A *criminal incident* is defined as an activity detected by or reported to police which:

- involved the same offender(s);
- involved the same victim(s);
- occurred at the one location;
- occurred during one uninterrupted period of time;
- falls into one offence category;
- falls into one incident type (for example, 'actual', 'attempted', 'conspiracy').

One incident may involve two offenders assaulting the same victim. This would be recorded as one assault incident. Alternatively, suppose a man reports to police that his neighbour demanded money from him, then assaulted him when he did not comply. For such an event, two criminal incidents are recorded because two distinct offence types are involved (demand money with menaces and assault) even though the same parties were involved at the same time and in the same place.

### RECORDED VICTIMS

For murder and manslaughter only, the counting units used are victims. Under the definition of a criminal incident (same parties, same time, same place, same offence and same incident type) one murder or manslaughter incident could involve two or more persons being killed. Because of the seriousness of these offences and their relatively small numbers, it was considered to be more appropriate to count the number of victims, rather than the number of criminal incidents. Hence, where *one* murder incident involves a person killing six people, *six* murder victims are counted.

### OFFENCE CATEGORIES

The classification of offences in this report is based on the Australian National Classification of Offences (ANCO) issued by the Australian Bureau of Statistics (ABS, 1985, Cat. No. 1234.0).

For all *type of offence* classifications used in the report, Appendix 1 lists the offence categories included in the classification. The offence categories are those used by the NSW Police Service and do not necessarily correspond exactly with offences defined in legislation.

### COUNTING PERIOD

Criminal incidents are included in the counting period in which they were reported to or detected by police.

In most cases criminal incidents are recorded on COPS on the day of reporting. Because the reporting date and recording date may differ, it is possible for some updating of data to occur. That is, data extracted for a specified period of time (incidents reported in 1999, for example), may differ according to the date of extraction of the data.

## PROCEEDINGS AGAINST ALLEGED OFFENDERS

Police may proceed against offenders and alleged offenders through a variety of legal or other processes. Most alleged offenders are referred to the NSW criminal courts. The more serious offences are dealt with by way of a charge. The alleged offender is arrested, taken to a police station, fingerprinted and the details of the person and charge are recorded. A Court Attendance Notice (CAN) may be issued at a police station or a Field Court Attendance Notice (FCAN) may be issued by police at other locations. Either type of Court Attendance Notice specifies the particulars of the alleged offence, the date and place of the court hearing and the consequences of failure to attend. A summons may be used for less serious offences. The court issues a summons at the request of an informant. The summons specifies the alleged offence and the date and place of the court hearing.

Some alleged offenders are proceeded against but diverted from the criminal court system. For many minor offences police can issue Infringement Notices. By paying the prescribed penalty the offender avoids having to go to court. Police also have the discretion to issue warnings to offenders. More recently, the *Young Offenders Act 1997* introduced the Youth Justice Conferencing scheme. A Youth Justice Conference (YJC) is a face to face meeting between offenders, victims and their support persons. A convenor acts as a facilitator for the meeting. The parties discuss the offending behaviour and the impact on the victim. They also negotiate some form of restitution to the victim. The Young Offenders Act 1997 also provides for cautions to be issued to juvenile offenders.

Some offenders or alleged offenders are not proceeded against. The offender or alleged offender may be deceased, be under the age of ten years, have diplomatic immunity or be mentally incapable of forming criminal intent. The victim or the Director of Public Prosecutions may refuse to prosecute. A small number of offenders or alleged offenders are temporarily not proceeded against while police await further advice, for example whether a juvenile should be referred to a YJC.

## CLEARED CRIMINAL INCIDENTS

A cleared criminal incident is one which, in the view of police, has been satisfactorily cleared by charge or otherwise.

An incident is cleared by charge when police have laid a charge or an information against at least one person. The information may have been laid with a view to the issuing of a warrant, summons or other process for the purpose of bringing an offender before the court.

A criminal incident is cleared other than by charge when, under normal circumstances, a charge or information would have been laid against at least one person, but, for a variety of reasons, police have been unable to make an arrest, despite knowing the identity of the offender and having sufficient evidence to support a charge. Examples of situations in which an offence may be cleared other than by charge include the following:

- the offender is a juvenile and is cautioned;
- the offender has died before a charge is made or information laid;
- the offender has been committed to a psychiatric institution and is unlikely to be released;
- there is an obstacle to charging, such as diplomatic immunity;
- the complainant or essential witness is dead and proceedings would be aborted;
- the offender is serving a sentence and police consider that no useful purpose would be served by prosecution.

## REGIONAL STATISTICS

Statistics are provided on the number of criminal incidents (victims for murder) recorded for each of the Statistical Divisions of NSW as defined by the Australian Bureau of Statistics. Within the Sydney Statistical Division, statistics are provided for Statistical Subdivisions. Recorded criminal incidents which occurred in correctional, detention or remand centres, however, are not counted in the Statistical Division in which the incident occurred. Numbers of such incidents are noted at the foot of each table. Appendix 2 provides maps

indicating the location of each Statistical Division and Sydney Statistical Subdivision. Appendix 3 lists the Local Government Areas within each of the Statistical Divisions and Statistical Subdivisions. A criminal incident is counted within a particular region when the location of the offence falls within that region.

For the rate calculations, population data were obtained from the Australian Bureau of Statistics publications: *Regional Population Growth, Australia, 8 Feb 2000*, Cat. No. 3218.0 (for 1998 population estimates), and *Regional Population Growth, Australia, 20 Feb 2001*, Cat. No. 3234.1 (for 1999 and 2000 population estimates).

## ORGANISATION OF THE REPORT

The report is organised into five main sections as follows. First, there is an overview of major trends in recorded criminal incidents (recorded victims for murder) over the two-year period from January 1999 to December 2000. Figures showing trends in selected offences are presented, as well as summary points indicating which trends are statistically significant and the highest and lowest offending rates in statistical divisions of rural NSW and statistical subdivisions of Sydney. This section also includes figures showing trends in methods of proceeding against offenders and alleged offenders which lead to attendance at court.

The second section presents, for all categories of offence, the monthly numbers of recorded criminal incidents (recorded victims for murder and manslaughter). There are three tables in this section, one each for 1998, 1999 and 2000. Each table provides a total for the year and the annual rate per 100,000 population. The data used for the trend analysis in the first section of the report are included in these tables. Note, however, that the trend analysis uses only the most recent two years of data.

The third section appears for the first time in this edition. There are three tables in this section, one each for 1998, 1999 and 2000. Each table provides monthly numbers of offenders or alleged offenders proceeded against, by the type of process pursued, for those criminal incidents recorded by NSW police in the reference year. Each offender or alleged offender appears only once in the table for each event (there can be more than one criminal incident associated with a single event). The processes are arranged in a hierarchy with the offender or alleged offender appearing in the most serious category where multiple incidents are involved. For example if an event involves two incidents and the alleged offender is charged for one incident but receives a warning for the second incident, the alleged offender appears only in the 'Charged' category. Note that in these tables the year refers to the year in which the criminal incident or incidents were reported to the police. For example, if an incident were reported to police in 1999 but the alleged offender was not apprehended and charged until 2000, the charge is recorded for 1999.

The fourth section provides the numbers and percentages of cleared criminal incidents, for selected types of offence, for 1998, 1999 and 2000. The offence types included in these tables are those where the crime is likely to have been reported to police, rather than discovered or detected by police. Offence types where the numbers of recorded criminal incidents are influenced by police law enforcement activity (drug offences, for example) are excluded. For such offence types the clear-up percentages are very high because clearing the offence generally occurs simultaneously with its detection (that is, an arrest is made when the crime is discovered).

The tables for 1998 and 1999 show the number of recorded criminal incidents and, of these, the number which had been cleared 30 days, 90 days and 180 days after the incident was reported to police. The tables also include clear-up percentages, which show the proportions of recorded incidents which had been cleared within 30, 90 and 180 days of reporting. The table for 2000 is similar to those for 1998 and 1999 except that there are only two follow-up periods, 30 days and 90 days. Because the data for this report were extracted in January 2000, the clear-up status after 90 days could not be determined for any offences reported in the last three months of 2000. Hence, the clear-up data for 2000 are for the first nine months of the year only.

In the fifth section of the report there are 30 tables, one for each major offence category. Each table gives the numbers and rates (per 100,000 population) of recorded criminal incidents (for murder, recorded victims) for the periods January to December 1998, January to December 1999 and January to December 2000, for each of the NSW Statistical Divisions and for each Statistical Subdivision in Sydney. Recorded criminal incidents which occurred in custodial institutions are counted separately; they are not included in the data for the Statistical Division where the custodial institution is located. Note that both the numbers and rates of recorded criminal incidents in 1999 have been updated since the previous edition.



---

# OVERVIEW OF MAJOR TRENDS

---

## OVERVIEW OF MAJOR TRENDS

### TRENDS IN RECORDED CRIME

However trends in recorded crime are presented, their interpretation is a difficult task. The recorded criminal incident data presented in this report are based on information derived from the NSW Police Service Computerised Operational Policing System, so only those incidents which are reported to, or detected by, police are included. The trends in recorded crime shown in this report will, therefore, reflect movements in the underlying factors which influence the detection, reporting and recording of crime, as well as changes in the true level of crime in the community.

An alternative measure of the level of crime in NSW is available from crime victim surveys, for example the *Crime and Safety Survey* which is conducted annually by the Australian Bureau of Statistics (ABS).<sup>1</sup> As well as providing an estimate of the victimisation rate in the community for a selected set of offences, this survey measures the proportion of crimes which are not reported to police, and are therefore not recorded in the official statistics. In particular, personal crimes, such as assault and robbery, are less likely to be reported than crimes which involve households. For example, *Crime and Safety, New South Wales, 2000* shows that, in the twelve-month period to April 2000, while more than 95 per cent of motor vehicle thefts and almost 72 per cent of break and enter offences (crimes against 'households') were reported to police, only 35 per cent of all alleged assault offences were reported during that period. Given that some offences have low reporting rates, it is possible that changes in recorded crime rates over time for these offences largely reflect changes in reporting rates.

Public willingness to report crime, however, is just one of the extraneous factors which can affect trends in recorded crime. Shifts in policing policy can also have a marked effect on the number of recorded drug offences, drink driving offences, cases of offensive behaviour or of receiving stolen goods. For these offences, therefore, recorded rates probably do not accurately reflect actual rates. For this reason, the more detailed comparisons of crime rates and examination of trends in this document are restricted to categories of offence which are reported to, rather than detected by, police.

The interpretation of trends in official reports of crime can be considerably more difficult than the interpretation of trends in unemployment or inflation statistics. The ease with which recorded crime statistics can be misunderstood creates a temptation to offer an authoritative explanation for each major crime trend. Indeed, in many instances it is simply impossible to state with any assurance why a particular trend has appeared. This report, therefore, confines itself to identifying and describing trends in recorded crime, rather than explaining them.

The trends examined in this overview cover a twenty-four month period, from January 1999 to December 2000. For comparative purposes, statistics for 1998 have been included in the detailed tables in the sections which follow. For some offence categories, separate trends have been presented for various offence subcategories; in particular, sexual offences, robbery, break and enter, and stealing offences have been further disaggregated.

For each offence category or subcategory except murder, a statistical test for trend was applied to the monthly numbers of recorded criminal incidents over the twenty-four month period from January 1999 to December 2000.<sup>2</sup> In the case of murder, the statistical test for trend was applied to the monthly numbers of victims over the same period. For those offences where a statistically significant trend was found, the extent of the trend is indicated by the percentage change between the total recorded number of incidents for the twelve months of January to December 1999 and the total recorded number of incidents for the same period in 2000.

## SUMMARY OF TRENDS

In the following summary the bracketed figures denote the percentage change in the total number of recorded criminal incidents between the consecutive twelve-month periods January to December 1999 and January to December 2000.

### Significant downward trends

There were no offences for which there was a statistically significant downward trend in the monthly numbers of recorded criminal incidents.

### Offences where there was no upward or downward trend

There was no statistically significant generally upward or downward trend in the monthly numbers of recorded criminal incidents<sup>3</sup> for any of the following offences:

- murder (see Figure 1)
- assault (see Figure 2)
- sexual assault (see Figure 3)
- indecent assault, act of indecency and other sexual offences (see Figure 3)
- robbery with a firearm (see Figure 4)
- robbery with a weapon not a firearm (see Figure 4)
- robbery without a weapon (see Figure 4)
- break and enter – dwelling (see Figure 5)
- steal from retail store (see Figure 7)
- steal from dwelling (see Figure 7)
- steal from person (see Figure 7)
- fraud (see Figure 8)
- malicious damage to property (see Figure 9).

### Significant upward trends

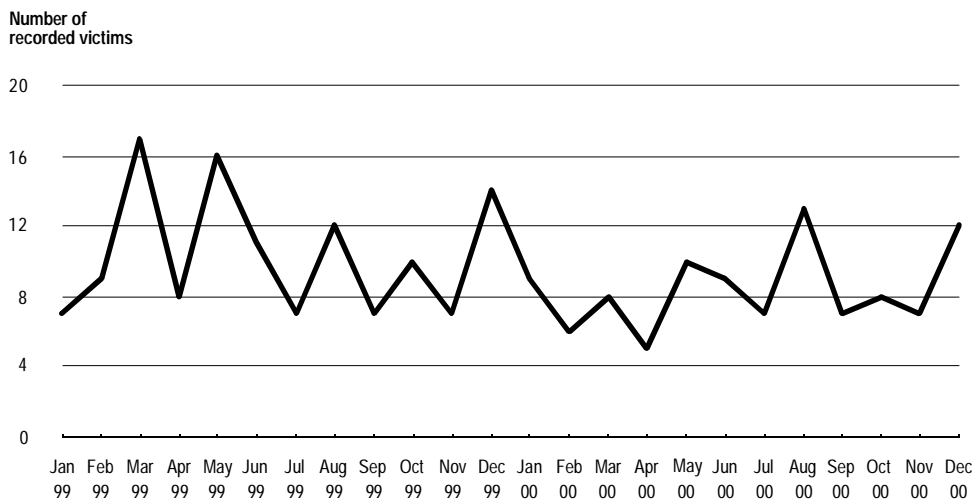
There was a statistically significant upward trend in the monthly numbers of recorded criminal incidents for the following offences:

- break and enter – non-dwelling (up by 8.1%; see Figure 5)
- motor vehicle theft (up by 8.2%; see Figure 6)
- steal from motor vehicle (up by 15.2%; see Figure 6).

## DESCRIPTION OF TRENDS

The information which follows shows trends, recorded criminal incident rates and the highest and the lowest rates of recorded criminal incidents for a selected set of offences. Within the Sydney Statistical Division, recorded crime rates are detailed by Statistical Subdivision (SSD). Outside the Sydney Statistical Division, recorded crime rates are detailed by Statistical Division (SD). The rate calculations are based on resident population data and are calculated as recorded offences per 100,000 population in each Statistical Division or Subdivision.<sup>4</sup> It should be noted that the Inner Sydney Statistical Subdivision has high recorded crime rates because, compared with other regions, the resident population is small relative to the 'transient' or non-resident population which uses the area for business, entertainment, shopping, etc. That is, the high transient population is not reflected in the rate calculation.

**Figure 1: Murder**

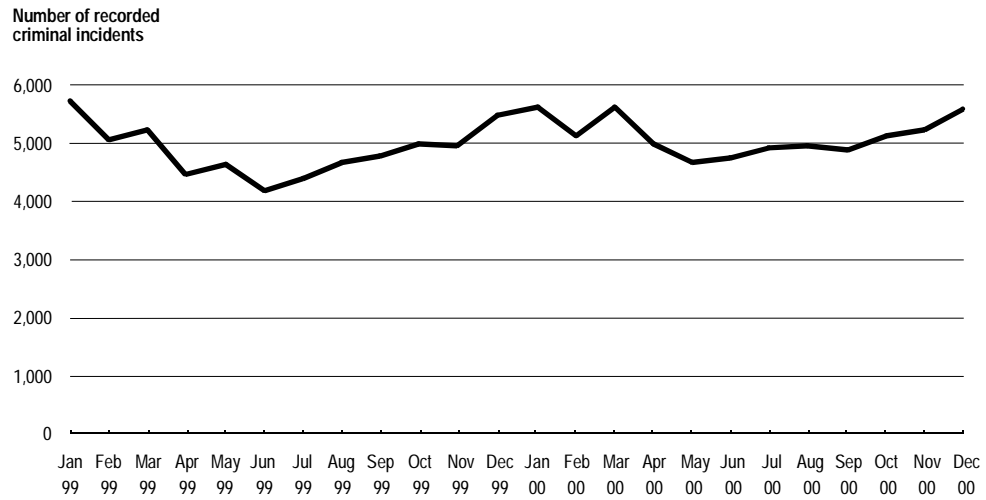


### Murder

With such small numbers of murder victims, the month to month variation is extremely marked. For this reason it is difficult to detect trends over such a short period. Because of the small numbers of murder victims, it is not sensible to make regional comparisons.

**Trend (Jan 1999 - Dec 2000):** No statistically significant upward or downward trend.

**NSW annual rate (2000):** 1.6 per 100,000 population

**Figure 2: Assault**

## Assault

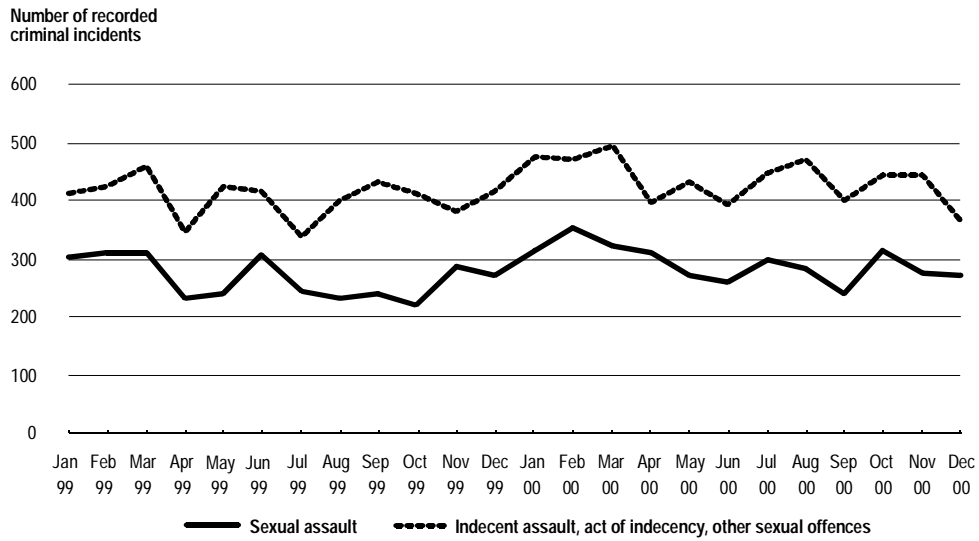
**Trend (Jan 1999 - Dec 2000):** No statistically significant upward or downward trend.

**NSW annual rate (2000):** 949.0 per 100,000 population

**Highest rates:** Far West SD - 2,789.7 per 100,000 population  
 Inner Sydney SSD - 2,204.7 per 100,000 population  
 North Western SD - 1,947.0 per 100,000 population

**Lowest rates:** Hornsby - Ku-ring-gai SSD - 246.0 per 100,000 population  
 Lower Northern Sydney SSD - 445.7 per 100,000 population  
 Northern Beaches SSD - 483.6 per 100,000 population

**Figure 3: Sexual assault and indecent assault, act of indecency, other sexual offences**



**Sexual offences**

*Sexual assault*

**Trend (Jan 1999 - Dec 2000):** No statistically significant upward or downward trend.

**NSW annual rate (2000):** 54.2 per 100,000 population

**Highest rates:** Far West SD - 110.2 per 100,000 population  
 North Western SD - 109.5 per 100,000 population  
 Inner Sydney SSD - 89.3 per 100,000 population

**Lowest rates:** Hornsby - Ku-ring-gai SSD - 22.5 per 100,000 population  
 Lower Northern Sydney SSD - 23.3 per 100,000 population  
 Eastern Suburbs SSD - 24.8 per 100,000 population

*Indecent assault, act of indecency, other sexual offences*

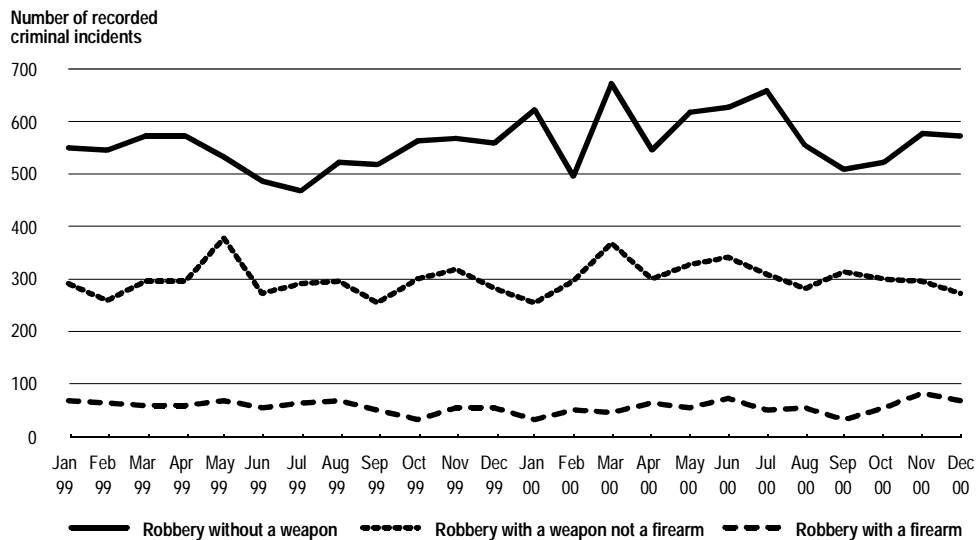
**Trend (Jan 1999 - Dec 2000):** No statistically significant upward or downward trend.

**NSW annual rate (2000):** 81.0 per 100,000 population

**Highest rates:** Far West SD - 165.3 per 100,000 population  
 North Western SD - 161.7 per 100,000 population  
 Murrumbidgee SD - 138.5 per 100,000 population

**Lowest rates:** St George - Sutherland SSD - 45.6 per 100,000 population  
 Northern Beaches SSD - 46.2 per 100,000 population  
 Eastern Suburbs SSD - 47.5 per 100,000 population

Figure 4: Robbery with and without a weapon



## Robbery

### *Robbery without a weapon*

**Trend (Jan 1999 - Dec 2000):** No statistically significant upward or downward trend.

**NSW annual rate (2000):** 107.9 per 100,000 population

**Highest rates:** Inner Sydney SSD - 583.8 per 100,000 population  
 Central Western Sydney SSD - 202.3 per 100,000 population  
 Canterbury – Bankstown SSD - 195.3 per 100,000 population

**Lowest rates:** Murray SD - 13.6 per 100,000 population  
 Far West SD - 17.0 per 100,000 population  
 South Eastern SD - 23.0 per 100,000 population

### *Robbery with a firearm*

**Trend (Jan 1999 - Dec 2000):** No statistically significant upward or downward trend.

**NSW annual rate (2000):** 10.1 per 100,000 population

**Highest rates:** Inner Sydney SSD - 36.5 per 100,000 population  
 Canterbury – Bankstown SSD - 28.3 per 100,000 population  
 Inner Western Sydney SSD - 27.7 per 100,000 population

**Lowest rates:** South Eastern SD - 0.5 per 100,000 population  
 Central West SD - 0.6 per 100,000 population  
 Murrumbidgee SD - 0.7 per 100,000 population

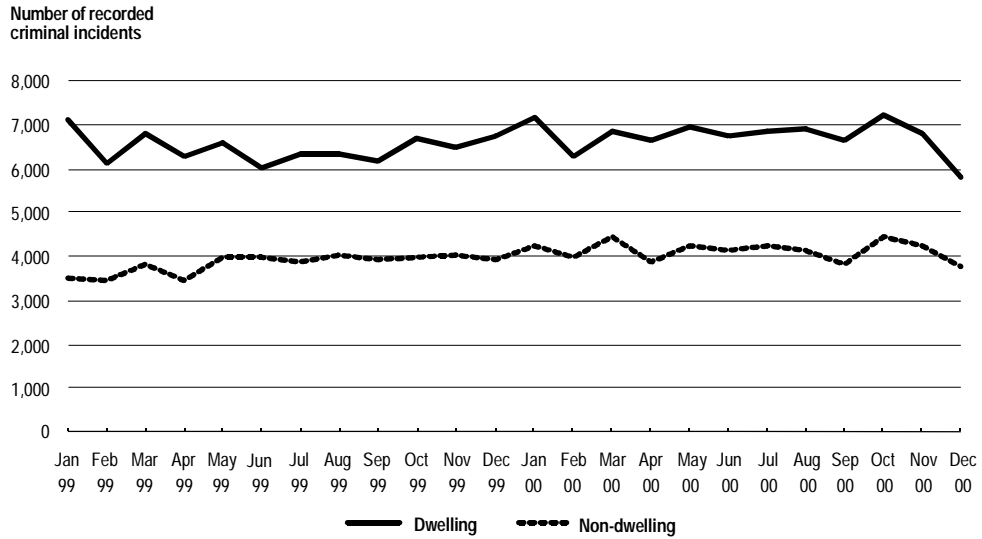
### *Robbery with a weapon not a firearm*

**Trend (Jan 1999 - Dec 2000):** No statistically significant upward or downward trend.

**NSW annual rate (2000):** 56.5 per 100,000 population

**Highest rates:** Inner Sydney SSD - 283.0 per 100,000 population  
 Central Western Sydney SSD - 135.1 per 100,000 population  
 Fairfield – Liverpool SSD - 125.1 per 100,000 population

**Lowest rates:** Murray SD - 2.7 per 100,000 population  
 Far West SD - 4.2 per 100,000 population  
 South Eastern SD - 5.5 per 100,000 population

**Figure 5: Break and enter – dwelling and non-dwelling**

## Break and enter

### *Break and enter - dwelling*

**Trend (Jan 1999 - Dec 2000):** No statistically significant upward or downward trend.

**NSW annual rate (2000):** 1,250.8 per 100,000 population

**Highest rates:** Inner Sydney SSD - 2,096.8 per 100,000 population  
 Fairfield – Liverpool SSD - 1,664.3 per 100,000 population  
 Eastern Suburbs SSD - 1,566.3 per 100,000 population

**Lowest rates:** Murrumbidgee SD - 730.1 per 100,000 population  
 South Eastern SD - 765.1 per 100,000 population  
 Mid North Coast SD - 781.4 per 100,000 population

### *Break and enter - non-dwelling*

**Trend (Jan 1999 - Dec 2000):** A statistically significant upward trend (up by 8.1%).

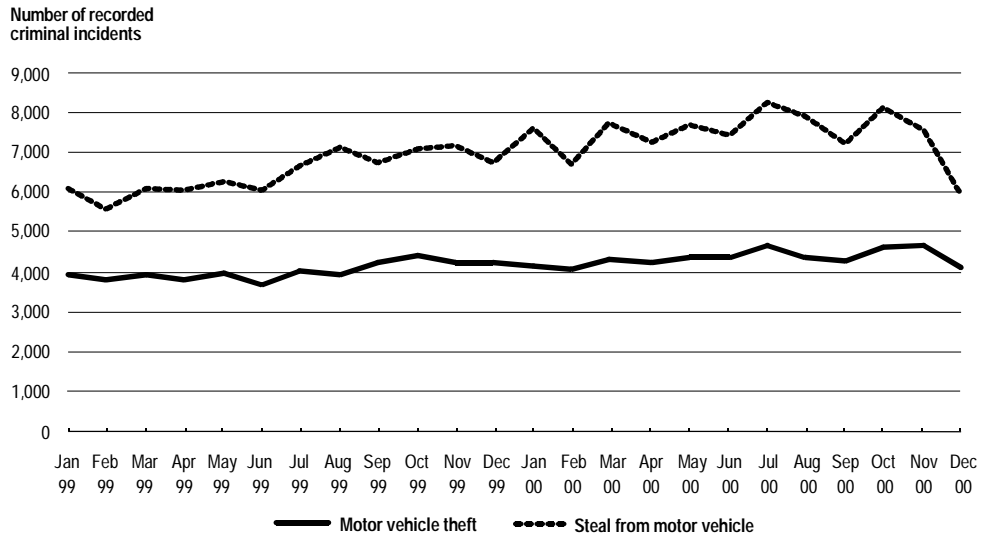
**NSW annual rate (2000):** 766.9 per 100,000 population

**Highest rates:** Inner Sydney SSD - 1,660.9 per 100,000 population  
 North Western SD - 1,326.8 per 100,000 population  
 Hunter SD - 1,112.9 per 100,000 population

**Lowest rates:** Hornsby – Ku-ring-gai SSD - 390.8 per 100,000 population  
 Northern Beaches SSD - 394.2 per 100,000 population  
 St George – Sutherland SSD - 483.8 per 100,000 population



**Figure 6: Motor vehicle theft and steal from motor vehicle**



**Motor vehicle theft and steal from motor vehicle**

*Motor vehicle theft*

**Trend (Jan 1999 - Dec 2000):** A statistically significant upward trend (up by 8.2%).

**NSW annual rate (2000):** 808.8 per 100,000 population

**Highest rates:** Inner Sydney SSD - 1,688.1 per 100,000 population  
 Fairfield – Liverpool SSD - 1,397.7 per 100,000 population  
 Central Western Sydney SSD - 1,285.8 per 100,000 population

**Lowest rates:** Northern SD - 249.4 per 100,000 population  
 South Eastern SD - 252.7 per 100,000 population  
 Hornsby – Ku-ring-gai SSD - 287.4 per 100,000 population

*Steal from motor vehicle*

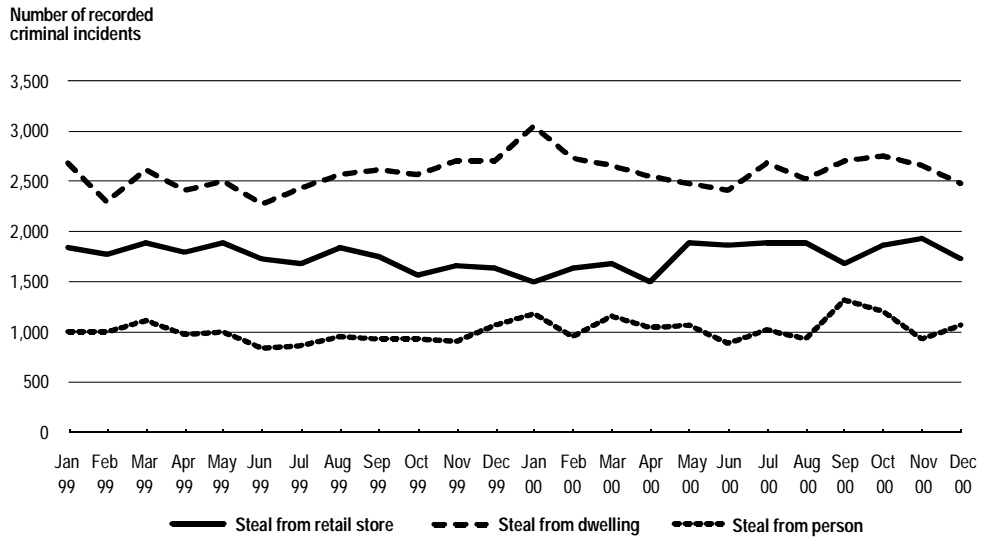
**Trend (Jan 1999 - Dec 2000):** A statistically significant upward trend (up by 15.2%).

**NSW annual rate (2000):** 1,385.9 per 100,000 population

**Highest rates:** Inner Sydney SSD - 5,256.2 per 100,000 population  
 Lower Northern Sydney SSD - 1,667.3 per 100,000 population  
 Central Western Sydney SSD - 1,656.5 per 100,000 population

**Lowest rates:** South Eastern SD - 640.7 per 100,000 population  
 Murrumbidgee SD - 685.1 per 100,000 population  
 Central West SD - 785.0 per 100,000 population

**Figure 7: Steal from retail store, from dwelling and from person**



**Stealing**

*Steal from retail store*

**Trend (Jan 1999 - Dec 2000):** No statistically significant upward or downward trend.

**NSW annual rate (2000):** 325.9 per 100,000 population

**Highest rates:** Inner Sydney SSD - 867.1 per 100,000 population  
 Central Western Sydney SSD - 543.7 per 100,000 population  
 Fairfield – Liverpool SSD - 375.9 per 100,000 population

**Lowest rates:** Hornsby – Ku-ring-gai SSD - 98.0 per 100,000 population  
 Far West SD - 207.7 per 100,000 population  
 Northern Beaches SSD - 224.6 per 100,000 population

*Steal from dwelling*

**Trend (Jan 1999 - Dec 2000):** No statistically significant upward or downward trend.

**NSW annual rate (2000):** 490.0 per 100,000 population

**Highest rates:** Far West SD - 1,284.6 per 100,000 population  
 Inner Sydney SSD - 782.4 per 100,000 population  
 North Western SD - 697.2 per 100,000 population

**Lowest rates:** Canterbury – Bankstown SSD - 248.4 per 100,000 population  
 Fairfield – Liverpool SSD - 318.1 per 100,000 population  
 Hornsby – Ku-ring-gai SSD - 319.6 per 100,000 population

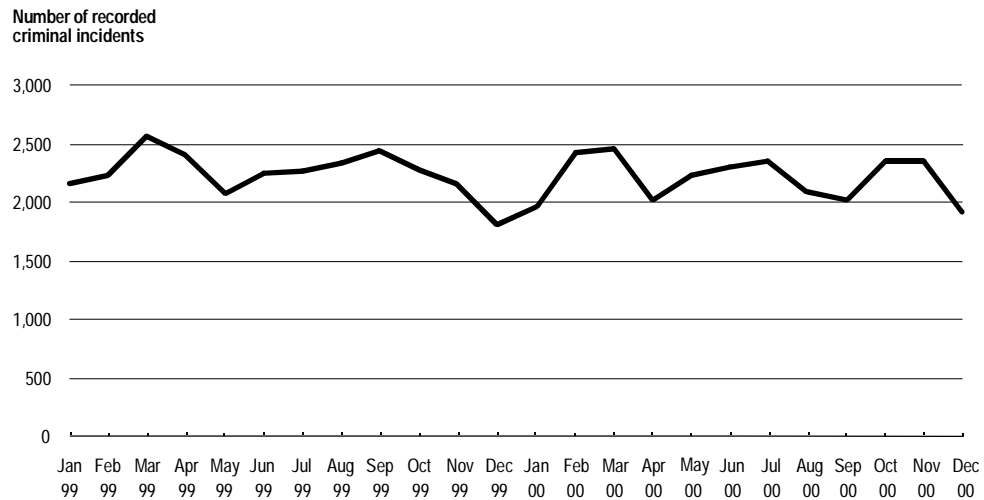
*Steal from person*

**Trend (Jan 1999 - Dec 2000):** No statistically significant upward or downward trend.

**NSW annual rate (2000):** 197.4 per 100,000 population

**Highest rates:** Inner Sydney SSD - 1,646.7 per 100,000 population  
 Inner Western Sydney SSD - 343.6 per 100,000 population  
 Eastern Suburbs SSD - 259.0 per 100,000 population

**Lowest rates:** Murrumbidgee SD - 30.3 per 100,000 population  
 Murray SD - 41.8 per 100,000 population  
 South Eastern SD - 43.8 per 100,000 population

**Figure 8: Fraud**

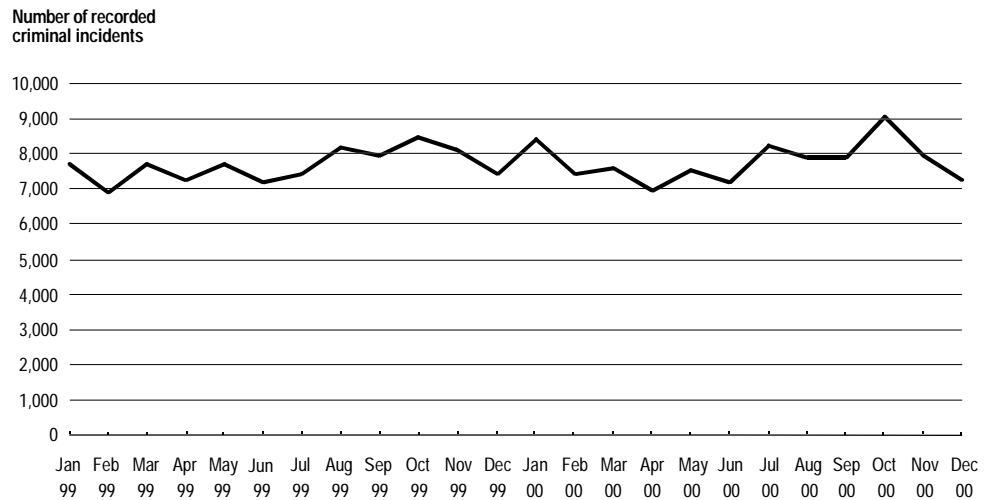
## Fraud

**Trend (Jan 1999 - Dec 2000):** No statistically significant upward or downward trend.

**NSW annual rate (2000):** 409.0 per 100,000 population

**Highest rates:** Inner Sydney SSD - 1,201.8 per 100,000 population  
 Central Western Sydney SSD - 550.1 per 100,000 population  
 Fairfield - Liverpool SSD - 541.3 per 100,000 population

**Lowest rates:** Hornsby - Ku-ring-gai SSD - 150.3 per 100,000 population  
 Far West SD - 220.5 per 100,000 population  
 St George - Sutherland SSD - 259.8 per 100,000 population

**Figure 9: Malicious damage to property**

### Malicious damage to property

**Trend (Jan 1999 - Dec 2000):** No statistically significant upward or downward trend.

**NSW annual rate (2000):** 1,444.8 per 100,000 population

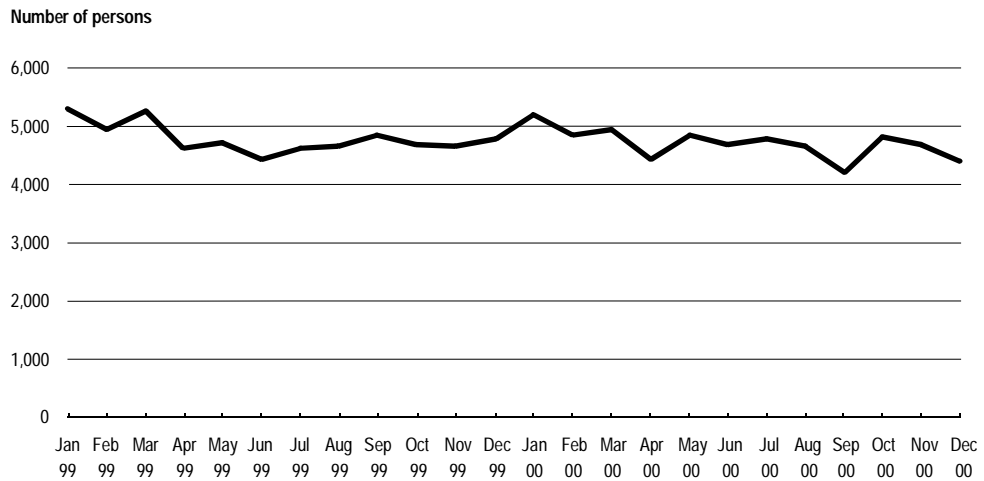
**Highest rates:** Far West SD - 2,641.3 per 100,000 population  
 North Western SD - 2,087.3 per 100,000 population  
 Inner Sydney SSD - 2,056.2 per 100,000 population

**Lowest rates:** Hornsby - Ku-ring-gai SSD - 855.3 per 100,000 population  
 Inner Western Sydney SSD - 872.6 per 100,000 population  
 Lower Northern Sydney SSD - 968.5 per 100,000 population

## TRENDS IN METHODS OF PROCEEDING AGAINST OFFENDERS OR ALLEGED OFFENDERS

The information which follows highlights trends in the numbers of persons proceeded against by charge, Court Attendance Notice, summons and Field Court Attendance Notice.

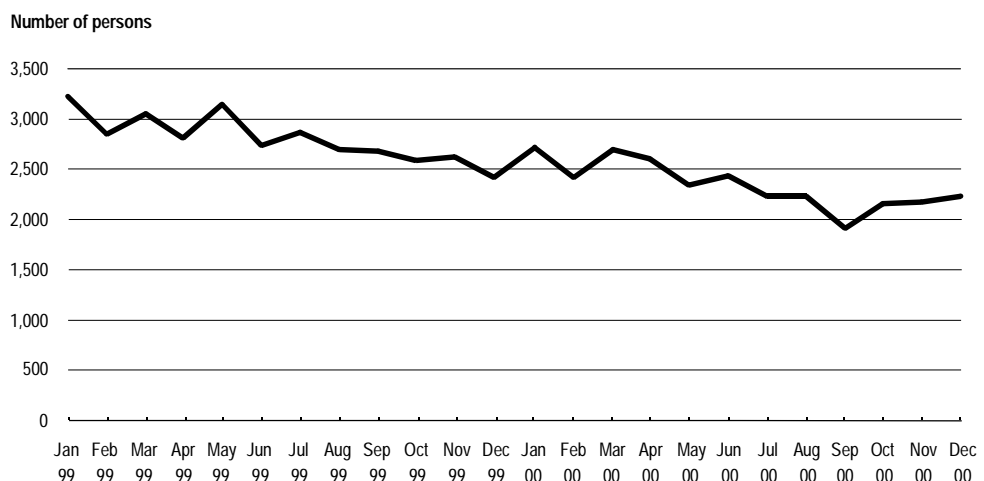
**Figure 10: Persons charged**



### Charge

**Trend (Jan 1999 - Dec 2000):** No statistically significant upward or downward trend.

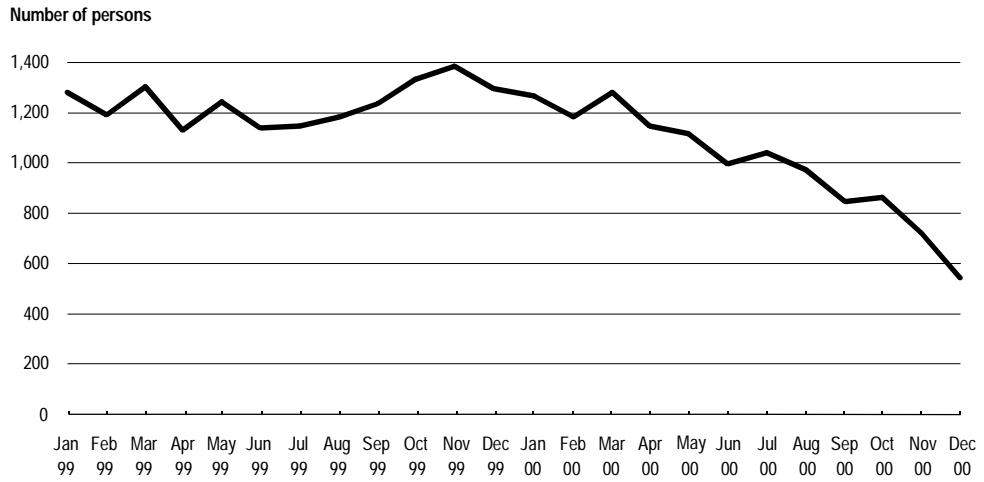
**Figure 11: Persons issued with Court Attendance Notice**



### Court Attendance Notice

**Trend (Jan 1999 - Dec 2000):** A statistically significant downward trend (down by 16.5%).

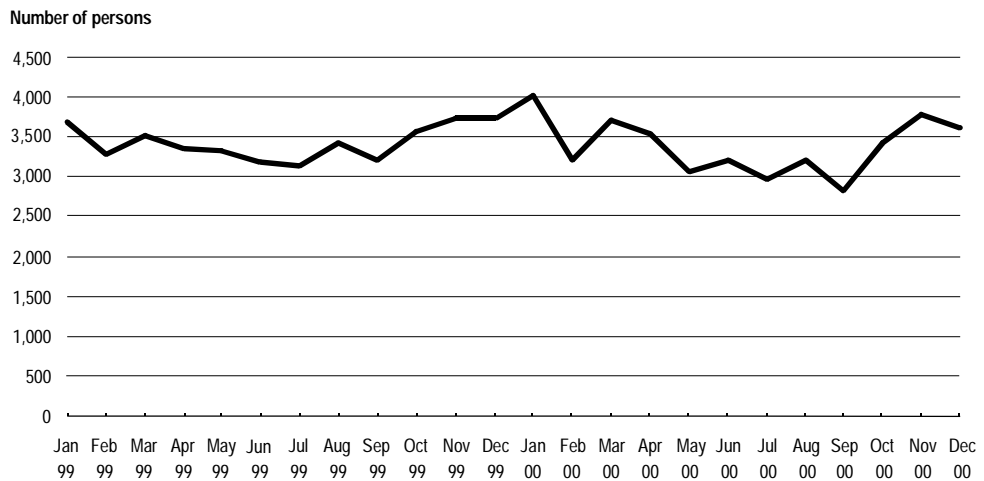
**Figure 12: Persons issued with summons**



**Summons**

**Trend (Jan 1999 - Dec 2000):** A statistically significant downward trend (down by 15.5%).

**Figure 13: Persons issued with Field Court Attendance Notice**



**Field Court Attendance Notice**

**Trend (Jan 1999 - Dec 2000):** No statistically significant upward or downward trend.

## NOTES

- 1 Australian Bureau of Statistics 2000, *Crime and Safety, New South Wales, April 1999*, Cat. No. 4509.1, ABS, Sydney, Australian Bureau of Statistics 2000, *Crime and Safety, New South Wales, April 2000*, Cat. No. 4509.1, ABS, Sydney.
- 2 The trend test used was Kendall's rank-order correlation test (see, for example, Conover, W.J. 1980, *Practical Non-Parametric Statistics*, 2nd edn, John Wiley and Sons, pp. 256-260). A two-tailed test was used to determine whether there had been an increasing or decreasing trend in the recorded numbers of criminal incidents over the most recent twenty-four month period covered in the report. Some month to month variations in the numbers of recorded incidents could be due in part to seasonal factors. The test for trend is not sensitive to seasonal variations; it is sensitive only to a generally increasing or generally decreasing trend over the time period examined.
- 3 In the case of murder, there was no statistically significant trend in the monthly numbers of recorded victims.
- 4 For the rate calculations, population data were obtained from the Australian Bureau of Statistics publications: *Regional Population Growth, Australia, 8 Feb 2000*, Cat. No. 3218.0 (for 1998 population estimates), and *Regional Population Growth, Australia, 20 Feb 2001*, Cat. No. 3234.1 (for 1999 and 2000 population estimates).

---

**MONTHLY TRENDS IN  
RECORDED CRIMINAL INCIDENTS,  
1998,1999 AND 2000  
NEW SOUTH WALES**

---



**TABLE 1.1 MONTHLY TRENDS IN RECORDED CRIMINAL INCIDENTS, 1998, NEW SOUTH WALES:  
TYPE OF OFFENCE**

Type of offence	Recorded criminal incidents												Total 1998	
	Jan	Feb	Mar	Apr	May	Jun	Jul	Aug	Sep	Oct	Nov	Dec	No.	Rate per 100,000 population
	<b>Homicide:</b>													
Murder*	6	8	9	15	6	8	5	6	9	7	11	10	100	1.6
Attempted murder	11	14	19	7	4	12	8	8	1	4	13	9	110	1.7
Murder accessory, conspiracy	0	1	0	1	0	0	0	0	0	0	0	1	3	0.0
Manslaughter – not driving*	2	3	4	1	0	9	1	0	3	4	1	1	29	0.5
Manslaughter – driving*	14	5	10	7	13	11	6	12	4	7	5	9	103	1.6
<b>Assault</b>	<b>5,372</b>	<b>4,802</b>	<b>5,235</b>	<b>4,388</b>	<b>4,601</b>	<b>4,258</b>	<b>4,517</b>	<b>4,791</b>	<b>4,805</b>	<b>5,072</b>	<b>5,214</b>	<b>5,617</b>	<b>58,672</b>	<b>926.4</b>
<b>Sexual offences:</b>														
Sexual assault	331	285	293	262	257	297	197	241	323	295	256	254	3,291	52.0
Indecent assault, act of indecency	358	286	298	301	332	297	305	314	366	359	272	258	3,746	59.1
Other sexual offences	138	191	177	121	119	152	80	97	139	111	132	107	1,564	24.7
<b>Abduction and kidnapping</b>	<b>37</b>	<b>36</b>	<b>32</b>	<b>28</b>	<b>23</b>	<b>29</b>	<b>28</b>	<b>34</b>	<b>56</b>	<b>57</b>	<b>52</b>	<b>42</b>	<b>454</b>	<b>7.2</b>
<b>Robbery:</b>														
Robbery without a weapon	496	488	587	595	569	533	537	523	494	573	556	552	6,503	102.7
Robbery with a firearm	52	78	89	72	81	108	82	79	55	80	74	69	919	14.5
Robbery with a weapon not a firearm	307	293	387	408	513	370	358	382	358	351	324	331	4,382	69.2
<b>Other offences against the person</b>	<b>128</b>	<b>196</b>	<b>195</b>	<b>166</b>	<b>179</b>	<b>202</b>	<b>195</b>	<b>199</b>	<b>254</b>	<b>262</b>	<b>309</b>	<b>275</b>	<b>2,560</b>	<b>40.4</b>

\* For murder and manslaughter only, the data are counts of recorded victims, not criminal incidents. See Explanatory Notes.

<b>Theft:</b>															
Break and enter – dwelling	7,547	6,530	7,300	7,317	7,692	7,266	7,291	7,573	7,267	7,384	6,418	6,183	85,768	1,354.2	
Break and enter – non-dwelling	4,237	3,818	4,315	3,801	4,165	4,244	4,206	4,244	4,023	4,069	3,951	3,699	48,772	770.1	
Possess implements	149	144	138	118	151	128	117	137	118	143	135	126	1,604	25.3	
Receiving	265	201	246	195	258	278	274	239	224	200	200	187	2,767	43.7	
Goods in custody	678	663	686	579	774	771	747	745	742	762	630	662	8,439	133.2	
Motor vehicle theft	4,531	4,397	4,913	4,671	4,959	4,485	4,385	4,654	4,288	4,501	4,265	3,817	53,866	850.5	
Steal from motor vehicle	6,515	5,579	6,541	6,173	6,339	6,381	6,622	6,996	6,397	6,002	6,078	5,874	75,497	1,192.0	
Steal from retail store	1,625	1,629	1,809	1,629	1,786	1,798	1,881	1,819	1,820	1,762	1,683	1,871	21,112	333.3	
Steal from dwelling	2,814	2,477	2,586	2,611	2,585	2,460	2,492	2,552	2,560	2,686	2,529	2,632	30,984	489.2	
Steal from person	990	1,026	1,131	1,166	904	834	826	878	889	898	972	1,117	11,631	183.6	
Stock theft	52	54	65	53	61	81	78	65	71	83	67	55	785	12.4	
Fraud	2,259	2,017	2,231	2,168	2,184	2,400	2,100	2,217	2,323	2,528	1,862	1,935	26,224	414.1	
Other theft	5,231	4,909	5,441	4,791	4,993	4,559	4,582	4,599	4,672	4,993	4,741	4,760	58,271	920.0	
<b>Demand money with menaces</b>	69	60	72	81	108	72	92	94	90	97	90	88	1,013	16.0	
<b>Extortion, blackmail</b>	4	7	7	8	1	6	5	16	7	2	4	3	70	1.1	
<b>Arson</b>	369	383	415	328	389	389	440	424	343	473	373	366	4,692	74.1	
<b>Malicious damage to property</b>	7,011	5,998	7,071	6,790	6,782	7,299	7,850	8,377	7,985	8,217	8,441	7,864	89,685	1,416.0	

*Table continues on next page*

**TABLE 1.1** MONTHLY TRENDS IN RECORDED CRIMINAL INCIDENTS, 1998, NEW SOUTH WALES:  
TYPE OF OFFENCE - continued

Type of offence	Recorded criminal incidents												Total 1998	
	Jan	Feb	Mar	Apr	May	Jun	Jul	Aug	Sep	Oct	Nov	Dec	No.	Rate per 100,000 population
	<b>Drug offences:</b>													
Possession and/or use of cocaine	21	15	21	12	17	27	23	23	25	37	34	25	280	4.4
Possession and/or use of narcotics	237	213	229	217	241	247	247	264	252	257	298	318	3,020	47.7
Possession and/or use of cannabis	1,003	857	990	874	1,050	1,102	1,002	891	868	863	916	862	11,278	178.1
Possession and/or use of other drugs	177	129	133	114	163	156	190	144	126	161	163	170	1,826	28.8
Dealing, trafficking in cocaine	8	5	4	5	10	6	14	10	28	16	9	9	124	2.0
Dealing, trafficking in narcotics	47	33	71	41	30	66	50	78	86	76	96	87	761	12.0
Dealing, trafficking in cannabis	91	71	72	99	90	143	98	92	110	67	96	65	1,094	17.3
Dealing, trafficking in other drugs	54	29	26	42	45	45	27	24	40	45	62	43	482	7.6
Cultivating cannabis	332	303	294	177	136	133	100	108	125	146	180	257	2,291	36.2
Importing drugs	1	4	2	5	1	3	0	1	0	5	2	2	26	0.4
Other drug offences	260	270	276	238	271	280	275	247	232	245	286	265	3,145	49.7
<b>Offensive behaviour:</b>														
Offensive conduct	304	239	235	229	250	211	250	271	339	345	315	409	3,397	53.6
Offensive language	561	400	527	430	440	426	492	486	533	573	602	718	6,188	97.7
<b>Prostitution offences</b>														
	58	24	46	40	23	34	22	43	37	22	13	21	383	6.0
<b>Betting and gaming offences</b>														
	1	6	0	3	5	1	1	1	5	3	1	1	28	0.4
<b>Weapons offences</b>														
	372	401	400	371	427	442	458	437	465	458	459	505	5,195	82.0

<b>Against justice procedures:</b>														
Escapee – Corrective Services custody	10	12	10	9	17	13	10	10	9	13	12	13	138	2.2
Escapee – Police custody	17	21	21	23	16	12	20	24	14	16	17	20	221	3.5
Escapee – juvenile detention	1	2	0	0	0	0	0	0	0	0	0	1	4	0.1
Escapee – other custody	12	11	6	7	9	10	5	2	5	1	2	2	72	1.1
Breach Apprehended Violence Order	934	826	836	764	758	757	734	794	901	882	841	870	9,897	156.3
Breach bail conditions	318	281	293	231	266	244	218	241	306	291	296	333	3,318	52.4
Breach of recognizance	69	31	55	41	51	40	48	40	53	59	37	43	567	9.0
Fail to appear	172	130	144	136	168	121	138	136	158	122	129	129	1,683	26.6
Other offences against justice procedures	659	485	578	521	579	432	500	517	536	629	593	715	6,744	106.5
<b>Driving offences:</b>														
Culpable driving	18	12	20	21	14	10	19	24	14	13	20	26	211	3.3
PCA	1,536	1,125	1,723	1,454	1,473	1,486	1,288	1,600	1,525	1,684	1,831	1,908	18,633	294.2
Drive while disqualified	922	674	850	830	830	824	820	942	1,045	1,152	1,119	1,416	11,424	180.4
Drive manner/speed dangerous	226	167	199	173	183	172	159	215	223	218	225	191	2,351	37.1
Other driving offences	2,517	2,003	2,520	2,209	2,239	2,228	2,232	2,393	2,500	2,872	2,927	3,067	29,707	469.0
<b>Other offences</b>	<b>2,619</b>	<b>2,091</b>	<b>2,610</b>	<b>2,342</b>	<b>2,346</b>	<b>2,296</b>	<b>2,353</b>	<b>2,627</b>	<b>2,752</b>	<b>2,736</b>	<b>2,702</b>	<b>2,684</b>	<b>30,158</b>	<b>476.2</b>

**TABLE 1.2 MONTHLY TRENDS IN RECORDED CRIMINAL INCIDENTS, 1999, NEW SOUTH WALES:  
TYPE OF OFFENCE**

Type of offence	Recorded criminal incidents												Total 1999	
	Jan	Feb	Mar	Apr	May	Jun	Jul	Aug	Sep	Oct	Nov	Dec	No.	Rate per 100,000 population
	<b>Homicide:</b>													
Murder*	7	8	16	8	16	11	7	12	7	10	7	14	123	1.9
Attempted murder	8	9	13	8	9	11	11	5	11	7	11	9	112	1.8
Murder accessory, conspiracy	1	3	1	1	1	1	3	0	0	0	2	0	13	0.2
Manslaughter – not driving*	1	2	1	0	2	0	1	0	0	1	0	2	10	0.2
Manslaughter – driving*	10	5	6	5	9	5	10	10	9	9	5	9	92	1.4
<b>Assault</b>	5,734	5,049	5,238	4,446	4,637	4,170	4,388	4,660	4,772	4,977	4,957	5,469	58,497	914.5
<b>Sexual offences:</b>														
Sexual assault	302	311	311	230	239	304	243	231	238	220	288	269	3,186	49.8
Indecent assault, act of indecency	303	291	323	241	296	283	218	275	285	278	251	296	3,340	52.2
Other sexual offences	110	133	137	104	126	132	121	125	147	133	128	121	1,517	23.7
<b>Abduction and kidnapping</b>	34	36	39	27	29	32	29	31	26	46	33	39	401	6.3
<b>Robbery:</b>														
Robbery without a weapon	549	547	574	572	532	485	470	522	516	562	566	560	6,455	100.9
Robbery with a firearm	68	65	57	59	67	54	63	70	51	34	55	54	697	10.9
Robbery with a weapon not a firearm	289	261	294	296	377	273	292	294	254	298	316	283	3,527	55.1
<b>Other offences against the person</b>	306	272	358	275	355	265	253	280	296	320	279	316	3,575	55.9

\* For murder and manslaughter only, the data are counts of recorded victims, not criminal incidents. See Explanatory Notes.

<b>Theft:</b>														
Break and enter – dwelling	7,093	6,093	6,791	6,265	6,600	6,006	6,352	6,347	6,151	6,699	6,463	6,752	77,612	1,213.3
Break and enter – non-dwelling	3,489	3,447	3,807	3,447	3,963	3,973	3,851	4,006	3,937	3,998	4,040	3,897	45,855	716.9
Possess implements	143	147	140	111	139	120	107	147	112	140	136	120	1,562	24.4
Receiving	239	183	276	192	163	174	178	167	183	153	185	169	2,262	35.4
Goods in custody	789	844	917	758	798	811	795	777	757	735	857	702	9,540	149.1
Motor vehicle theft	3,948	3,829	3,946	3,792	3,981	3,677	4,044	3,953	4,255	4,423	4,239	4,241	48,328	755.5
Steal from motor vehicle	6,112	5,564	6,086	6,049	6,294	6,078	6,657	7,145	6,755	7,088	7,194	6,762	77,784	1,216.0
Steal from retail store	1,839	1,780	1,885	1,792	1,895	1,738	1,674	1,830	1,747	1,566	1,667	1,636	21,049	329.1
Steal from dwelling	2,674	2,294	2,608	2,402	2,489	2,265	2,424	2,557	2,621	2,579	2,705	2,705	30,323	474.0
Steal from person	1,007	995	1,114	966	990	836	871	949	933	940	920	1,064	11,585	181.1
Stock theft	58	69	77	74	82	52	70	69	60	60	68	45	784	12.3
Fraud	2,162	2,235	2,554	2,396	2,075	2,240	2,270	2,333	2,447	2,278	2,151	1,799	26,940	421.2
Other theft	5,030	4,698	5,334	4,737	5,247	5,275	5,495	5,624	5,769	5,708	5,894	5,876	64,687	1,011.3
<b>Demand money with menaces</b>	93	63	102	109	79	75	82	85	67	67	86	55	963	15.1
<b>Extortion, blackmail</b>	3	2	7	7	2	3	4	2	10	4	5	17	66	1.0
<b>Arson</b>	393	343	385	384	457	399	416	469	449	437	418	396	4,946	77.3
<b>Malicious damage to property</b>	7,737	6,926	7,721	7,260	7,724	7,167	7,414	8,165	7,926	8,466	8,116	7,441	92,063	1,439.2

*Table continues on next page*

**TABLE 1.2** MONTHLY TRENDS IN RECORDED CRIMINAL INCIDENTS, 1999, NEW SOUTH WALES:  
TYPE OF OFFENCE - continued

Type of offence	Recorded criminal incidents												Total 1999	
	Jan	Feb	Mar	Apr	May	Jun	Jul	Aug	Sep	Oct	Nov	Dec	No.	Rate per 100,000 population
	<b>Drug offences:</b>													
Possession and/or use of cocaine	21	15	20	33	14	8	17	15	20	14	11	12	200	3.1
Possession and/or use of narcotics	306	293	353	255	260	221	247	264	243	194	182	191	3,009	47.0
Possession and/or use of cannabis	967	977	1,110	1,110	1,194	1,028	896	848	920	813	825	792	11,480	179.5
Possession and/or use of other drugs	186	172	192	185	200	186	189	210	195	203	167	213	2,298	35.9
Dealing, trafficking in cocaine	12	46	12	8	16	18	6	15	30	9	6	27	205	3.2
Dealing, trafficking in narcotics	57	83	99	92	102	115	52	64	75	48	42	35	864	13.5
Dealing, trafficking in cannabis	76	56	128	104	91	100	92	80	77	63	64	57	988	15.4
Dealing, trafficking in other drugs	30	44	62	53	61	35	56	27	44	45	56	56	569	8.9
Cultivating cannabis	276	297	265	145	90	83	66	80	123	108	211	192	1,936	30.3
Importing drugs	0	3	1	4	5	6	3	0	1	0	1	8	32	0.5
Other drug offences	249	309	317	249	278	241	251	221	253	221	233	220	3,042	47.6
<b>Offensive behaviour:</b>														
Offensive conduct	392	298	370	291	329	282	311	309	302	330	308	334	3,856	60.3
Offensive language	731	637	731	633	607	492	539	550	499	498	453	495	6,865	107.3
<b>Prostitution offences</b>														
	38	13	51	33	44	51	27	33	33	40	21	14	398	6.2
<b>Betting and gaming offences</b>														
	1	1	2	1	0	3	1	1	1	1	1	0	13	0.2
<b>Weapons offences</b>														
	448	465	483	833	907	788	778	787	742	713	737	675	8,356	130.6

<b>Against justice procedures:</b>														
Escapee – Corrective Services custody	8	3	14	9	6	8	9	7	9	9	10	11	103	1.6
Escapee – Police custody	27	20	18	21	18	12	24	24	23	24	15	30	256	4.0
Escapee – juvenile detention	0	0	0	0	1	0	0	0	1	0	0	0	2	0.0
Escapee – other custody	6	11	6	3	10	2	2	1	5	5	5	8	64	1.0
Breach Apprehended Violence Order	948	826	880	715	773	753	734	737	756	775	820	883	9,600	150.1
Breach bail conditions	368	325	403	359	368	366	364	382	408	437	348	359	4,487	70.1
Breach of recognizance	37	48	56	52	39	39	49	69	58	50	49	50	596	9.3
Fail to appear	127	119	131	141	118	149	153	124	127	143	127	106	1,565	24.5
Other offences against justice procedures	673	568	605	552	529	528	593	604	519	537	534	532	6,774	105.9
<b>Driving offences:</b>														
Culpable driving	23	20	15	20	17	13	16	21	13	18	11	12	199	3.1
PCA	1,988	1,655	2,035	1,947	2,021	1,919	1,910	1,890	1,729	1,864	1,985	2,042	22,985	359.3
Drive while disqualified	1,350	1,127	1,245	1,269	1,286	1,261	1,287	1,442	1,372	1,487	1,525	1,565	16,216	253.5
Drive manner/speed dangerous	220	204	212	207	244	219	203	226	209	249	235	259	2,687	42.0
Other driving offences	2,905	2,599	2,809	2,953	3,076	2,878	2,858	3,059	3,005	4,529	4,972	3,500	39,143	611.9
<b>Other offences</b>														
	2,914	2,668	2,774	2,810	3,158	3,017	3,181	3,268	3,420	3,374	3,230	3,428	37,242	582.2



**TABLE 1.3 MONTHLY TRENDS IN RECORDED CRIMINAL INCIDENTS, 2000, NEW SOUTH WALES:  
TYPE OF OFFENCE**

Type of offence	Recorded criminal incidents												Total 2000	
	Jan	Feb	Mar	Apr	May	Jun	Jul	Aug	Sep	Oct	Nov	Dec	No.	Rate per 100,000 population
<b>Homicide:</b>														
Murder*	9	6	8	5	10	9	7	13	7	8	7	12	101	1.6
Attempted murder	9	7	17	3	11	13	12	4	12	10	12	12	122	1.9
Murder accessory, conspiracy	0	0	2	0	1	0	0	2	0	0	0	1	6	0.1
Manslaughter – not driving*	2	1	0	3	0	1	2	1	0	0	2	1	13	0.2
Manslaughter – driving*	15	16	12	15	9	12	8	9	6	1	1	1	105	1.6
<b>Assault</b>	5,606	5,117	5,605	4,965	4,673	4,734	4,898	4,948	4,864	5,139	5,225	5,564	61,338	949.0
<b>Sexual offences:</b>														
Sexual assault	314	351	323	308	271	258	298	282	241	315	274	269	3,504	54.2
Indecent assault, act of indecency	337	310	354	278	302	278	329	325	282	317	321	253	3,686	57.0
Other sexual offences	137	160	141	119	131	115	120	146	117	126	123	112	1,547	23.9
<b>Abduction and kidnaping</b>	36	23	37	28	28	28	28	49	38	21	32	20	368	5.7
<b>Robbery:</b>														
Robbery without a weapon	622	494	674	544	617	626	661	554	509	522	578	571	6,972	107.9
Robbery with a firearm	31	48	45	63	55	73	51	54	33	53	80	69	655	10.1
Robbery with a weapon not a firearm	256	297	368	298	326	340	308	284	314	300	297	272	3,660	56.6
<b>Other offences against the person</b>	360	320	352	317	321	277	307	298	273	321	332	308	3,786	58.6

\* For murder and manslaughter only, the data are counts of recorded victims, not criminal incidents. See Explanatory Notes.

<b>Theft:</b>														
Break and enter – dwelling	7,141	6,279	6,865	6,631	6,963	6,734	6,824	6,879	6,651	7,229	6,818	5,829	80,843	1,250.8
Break and enter – non-dwelling	4,250	3,969	4,442	3,894	4,252	4,134	4,230	4,108	3,841	4,462	4,247	3,740	49,569	766.9
Possess implements	149	121	127	113	157	139	154	164	129	156	162	134	1,705	26.4
Receiving	145	189	197	169	207	189	165	149	99	173	138	98	1,918	29.7
Goods in custody	843	738	884	752	921	816	841	801	596	779	784	642	9,397	145.4
Motor vehicle theft	4,168	4,058	4,347	4,249	4,368	4,361	4,679	4,349	4,298	4,619	4,660	4,123	52,279	808.8
Steal from motor vehicle	7,632	6,724	7,749	7,270	7,711	7,424	8,277	7,915	7,210	8,143	7,574	5,947	89,576	1,385.9
Steal from retail store	1,509	1,637	1,692	1,495	1,882	1,875	1,894	1,890	1,679	1,872	1,925	1,716	21,066	325.9
Steal from dwelling	3,050	2,737	2,650	2,539	2,477	2,405	2,678	2,529	2,711	2,748	2,666	2,483	31,673	490.0
Steal from person	1,186	946	1,153	1,054	1,058	879	1,013	940	1,318	1,211	943	1,060	12,761	197.4
Stock theft	58	60	50	61	64	82	80	59	48	71	55	44	732	11.3
Fraud	1,967	2,423	2,454	2,011	2,225	2,294	2,359	2,084	2,014	2,345	2,343	1,917	26,436	409.0
Other theft	6,408	6,280	6,367	5,665	6,022	5,763	5,960	5,940	6,258	6,599	5,991	5,259	72,512	1,121.9
<b>Demand money with menaces</b>	103	79	85	99	82	94	86	87	80	78	96	80	1,049	16.2
<b>Extortion, blackmail</b>	7	4	2	4	5	6	6	4	5	5	6	0	54	0.8
<b>Arson</b>	509	420	384	439	460	479	577	587	641	605	502	460	6,063	93.8
<b>Malicious damage to property</b>	8,409	7,443	7,591	6,933	7,536	7,178	8,240	7,922	7,888	9,043	7,943	7,255	93,381	1,444.8

*Table continues on next page*

**TABLE 1.3** MONTHLY TRENDS IN RECORDED CRIMINAL INCIDENTS, 2000, NEW SOUTH WALES:  
TYPE OF OFFENCE - continued

Type of offence	Recorded criminal incidents												Total 2000	
	Jan	Feb	Mar	Apr	May	Jun	Jul	Aug	Sep	Oct	Nov	Dec	No.	Rate per 100,000 population
	<b>Drug offences:</b>													
Possession and/or use of cocaine	23	11	21	10	11	21	14	19	17	21	19	17	204	3.2
Possession and/or use of narcotics	258	218	204	194	269	175	195	192	144	199	191	204	2,443	37.8
Possession and/or use of cannabis	963	903	957	965	1,015	997	845	914	766	840	871	823	10,859	168.0
Possession and/or use of other drugs	258	198	233	194	213	214	222	208	151	195	216	227	2,529	39.1
Dealing, trafficking in cocaine	9	6	13	4	3	3	11	21	4	10	4	4	92	1.4
Dealing, trafficking in narcotics	84	44	53	36	123	76	75	99	55	41	74	69	829	12.8
Dealing, trafficking in cannabis	64	78	62	69	67	104	76	70	66	64	66	60	846	13.1
Dealing, trafficking in other drugs	60	66	47	60	71	71	72	74	38	35	107	46	747	11.6
Cultivating cannabis	252	242	191	133	103	69	57	83	63	133	124	159	1,609	24.9
Importing drugs	0	2	7	4	2	2	0	0	2	1	1	3	24	0.4
Other drug offences	246	251	254	242	202	261	234	228	195	242	215	178	2,748	42.5
<b>Offensive behaviour:</b>														
Offensive conduct	401	345	307	328	220	274	292	274	318	347	309	327	3,742	57.9
Offensive language	565	475	488	453	389	394	411	412	397	470	445	506	5,405	83.6
<b>Prostitution offences</b>														
	22	53	34	30	59	39	36	36	20	23	39	25	416	6.4
<b>Betting and gaming offences</b>														
	0	2	3	0	0	2	1	0	0	1	0	1	10	0.2
<b>Weapons offences</b>														
	786	773	804	645	790	760	750	867	695	759	779	667	9,075	140.4

<b>Against justice procedures:</b>														
Escapee – Corrective Services custody	5	7	7	11	11	7	11	6	10	6	4	9	94	1.5
Escapee – Police custody	24	19	22	18	21	20	15	16	13	15	14	21	218	3.4
Escapee – juvenile detention	0	0	0	0	0	0	0	1	0	0	0	0	1	0.0
Escapee – other custody	7	8	8	1	7	4	4	4	5	3	4	3	58	0.9
Breach Apprehended Violence Order	954	903	942	830	849	846	854	863	860	929	988	942	10,760	166.5
Breach bail conditions	507	411	425	343	363	394	384	359	382	384	485	411	4,848	75.0
Breach of recognizance	68	45	52	63	52	44	50	55	36	50	47	46	608	9.4
Fail to appear	135	138	149	130	144	144	154	145	118	116	164	138	1,675	25.9
Other offences against justice procedures	621	572	533	576	487	524	528	504	470	483	520	586	6,404	99.1
<b>Driving offences:</b>														
Culpable driving	14	13	15	21	23	13	21	10	12	10	4	6	162	2.5
PCA	2,025	1,573	2,124	2,071	1,739	1,927	1,769	1,894	1,607	1,903	2,252	2,268	23,152	358.2
Drive while disqualified	1,539	1,267	1,446	1,469	1,390	1,344	1,250	1,365	1,182	1,498	1,601	1,634	16,985	262.8
Drive manner/speed dangerous	271	225	256	278	243	228	234	256	200	253	236	227	2,907	45.0
Other driving offences	3,983	3,323	3,885	3,768	3,245	3,294	3,281	3,403	2,885	3,561	5,039	43,983	83,650	1,294.2
<b>Other offences</b>	<b>3,790</b>	<b>3,656</b>	<b>3,640</b>	<b>3,564</b>	<b>3,555</b>	<b>3,863</b>	<b>3,838</b>	<b>3,719</b>	<b>3,373</b>	<b>3,842</b>	<b>3,999</b>	<b>3,838</b>	<b>44,677</b>	<b>691.2</b>

---

**MONTHLY TRENDS IN  
METHODS OF PROCEEDING  
AGAINST ALLEGED OFFENDERS,  
1998,1999 AND 2000  
NEW SOUTH WALES**

---

**TABLE 2.1 MONTHLY TRENDS IN METHODS OF PROCEEDING AGAINST ALLEGED OFFENDERS, 1998,  
NEW SOUTH WALES: TYPE OF PROCESS**

Type of process	Number of alleged offenders												1998 Total
	Jan	Feb	Mar	Apr	May	Jun	Jul	Aug	Sep	Oct	Nov	Dec	
<b>Proceeded against to court:</b>													
Charged	6,135	5,004	5,362	4,731	4,814	4,659	4,397	4,678	4,681	4,749	4,754	4,867	58,831
Court Attendance Notice	4,184	3,251	4,002	3,274	3,543	3,489	3,268	3,296	3,267	3,318	3,139	3,226	41,257
Summons	1,436	1,522	1,605	1,427	1,402	1,405	1,354	1,519	1,390	1,378	1,303	1,444	17,185
Field Court Attendance Notice	232	284	665	779	900	1,071	1,396	1,797	2,181	2,710	2,873	3,310	18,198
<b>All proceedings to court</b>	<b>11,987</b>	<b>10,061</b>	<b>11,634</b>	<b>10,211</b>	<b>10,659</b>	<b>10,624</b>	<b>10,415</b>	<b>11,290</b>	<b>11,519</b>	<b>12,155</b>	<b>12,069</b>	<b>12,847</b>	<b>135,471</b>
<b>Proceeded against other than to court:</b>													
Youth Conference	2	6	5	17	62	58	65	82	57	46	48	60	508
Caution Young Offenders Act	18	34	122	481	568	639	567	693	700	513	612	669	5,616
Cannabis/other drug caution*	-	-	-	-	-	-	-	-	-	-	-	-	0
Infringement Notice/ Public Safety Infringement Notice	128	115	96	106	133	114	137	174	270	285	276	362	2,196
Warning	9	3	23	231	215	206	262	267	322	315	289	395	2,537
<b>All proceedings other than to court</b>	<b>157</b>	<b>158</b>	<b>246</b>	<b>835</b>	<b>978</b>	<b>1,017</b>	<b>1,031</b>	<b>1,216</b>	<b>1,349</b>	<b>1,159</b>	<b>1,225</b>	<b>1,486</b>	<b>10,857</b>
<b>All proceedings</b>	<b>12,144</b>	<b>10,219</b>	<b>11,880</b>	<b>11,046</b>	<b>11,637</b>	<b>11,641</b>	<b>11,446</b>	<b>12,506</b>	<b>12,868</b>	<b>13,314</b>	<b>13,294</b>	<b>14,333</b>	<b>146,328</b>
<b>Not proceeded against#</b>	<b>2,769</b>	<b>2,571</b>	<b>2,669</b>	<b>2,182</b>	<b>2,228</b>	<b>2,175</b>	<b>2,183</b>	<b>2,478</b>	<b>2,507</b>	<b>2,707</b>	<b>2,556</b>	<b>2,755</b>	<b>29,780</b>

\* Police did not have the discretion to issue cautions for minor drug offences in 1998.

# Includes person deceased, under 10 years of age, diplomatic immunity, mentally incapable of forming criminal intent, DPP or victim refuses to prosecute and proceeding delayed pending further advice.

**TABLE 2.2 MONTHLY TRENDS IN METHODS OF PROCEEDING AGAINST ALLEGED OFFENDERS, 1999,  
NEW SOUTH WALES: TYPE OF PROCESS**

Type of process	Number of alleged offenders												1999 Total
	Jan	Feb	Mar	Apr	May	Jun	Jul	Aug	Sep	Oct	Nov	Dec	
<b>Proceeded against to court:</b>													
Charged	5,282	4,921	5,260	4,614	4,724	4,414	4,605	4,649	4,831	4,676	4,649	4,781	57,406
Court Attendance Notice	3,217	2,841	3,060	2,808	3,145	2,728	2,864	2,687	2,675	2,580	2,621	2,420	33,646
Summons	1,280	1,188	1,303	1,129	1,242	1,141	1,142	1,181	1,239	1,329	1,382	1,298	14,854
Field Court Attendance Notice	3,685	3,268	3,519	3,353	3,325	3,192	3,137	3,430	3,204	3,571	3,724	3,724	41,132
<b>All proceedings to court</b>	<b>13,464</b>	<b>12,218</b>	<b>13,142</b>	<b>11,904</b>	<b>12,436</b>	<b>11,475</b>	<b>11,748</b>	<b>11,947</b>	<b>11,949</b>	<b>12,156</b>	<b>12,376</b>	<b>12,223</b>	<b>147,038</b>
<b>Proceeded against other than to court:</b>													
Youth Conference	47	69	73	82	95	77	98	124	99	112	108	91	1,075
Caution Young Offenders Act	528	522	627	571	644	619	621	670	713	634	670	640	7,459
Cannabis/other drug caution*	-	-	-	-	-	-	-	-	-	-	-	-	0
Infringement Notice/ Public Safety Infringement Notice	516	475	597	527	659	661	640	706	765	1,380	1,202	740	8,868
Warning	387	417	555	643	701	710	794	737	857	898	935	838	8,472
<b>All proceedings other than to court</b>	<b>1,478</b>	<b>1,483</b>	<b>1,852</b>	<b>1,823</b>	<b>2,099</b>	<b>2,067</b>	<b>2,153</b>	<b>2,237</b>	<b>2,434</b>	<b>3,024</b>	<b>2,915</b>	<b>2,309</b>	<b>25,874</b>
<b>All proceedings</b>	<b>14,942</b>	<b>13,701</b>	<b>14,994</b>	<b>13,727</b>	<b>14,535</b>	<b>13,542</b>	<b>13,901</b>	<b>14,184</b>	<b>14,383</b>	<b>15,180</b>	<b>15,291</b>	<b>14,532</b>	<b>172,912</b>
<b>Not proceeded against#</b>	<b>3,070</b>	<b>2,772</b>	<b>3,128</b>	<b>2,675</b>	<b>2,952</b>	<b>2,834</b>	<b>2,962</b>	<b>3,087</b>	<b>3,073</b>	<b>3,442</b>	<b>3,497</b>	<b>3,353</b>	<b>36,845</b>

\* Police did not have the discretion to issue cautions for minor drug offences in 1999.

# Includes person deceased, under 10 years of age, diplomatic immunity, mentally incapable of forming criminal intent, DPP or victim refuses to prosecute and proceeding delayed pending further advice.

**TABLE 2.3 MONTHLY TRENDS IN METHODS OF PROCEEDING AGAINST ALLEGED OFFENDERS, 2000, NEW SOUTH WALES: TYPE OF PROCESS**

Type of process	Number of alleged offenders												2000 Total
	Jan	Feb	Mar	Apr	May	Jun	Jul	Aug	Sep	Oct	Nov	Dec	
<b>Proceeded against to court:</b>													
Charged	5,197	4,852	4,926	4,413	4,850	4,665	4,771	4,645	4,199	4,807	4,679	4,389	56,393
Court Attendance Notice	2,712	2,407	2,692	2,610	2,344	2,430	2,223	2,224	1,915	2,146	2,174	2,227	28,104
Summons	1,264	1,180	1,282	1,148	1,118	994	1,041	972	843	860	721	541	11,964
Field Court Attendance Notice	4,012	3,216	3,702	3,532	3,074	3,199	2,962	3,197	2,820	3,420	3,780	3,622	40,536
<b>All proceedings to court</b>	<b>13,185</b>	<b>11,655</b>	<b>12,602</b>	<b>11,703</b>	<b>11,386</b>	<b>11,288</b>	<b>10,997</b>	<b>11,038</b>	<b>9,777</b>	<b>11,233</b>	<b>11,354</b>	<b>10,779</b>	<b>136,997</b>
<b>Proceeded against other than to court:</b>													
Youth Conference	62	98	110	117	85	122	67	90	86	101	78	54	1,070
Caution Young Offenders Act	615	576	580	604	613	732	720	718	605	673	644	546	7,626
Cannabis/other drug caution		3		137	147	163	136	153	142	137	158	167	1,343
Infringement Notice/ Public Safety Infringement Notice	1,018	938	1,036	1,047	823	1,068	1,056	1,046	709	966	2,428	35,498*	47,633
Warning	964	959	1,078	1,089	883	1,027	1,142	1,129	1,134	1,207	1,385	1,392	13,389
<b>All proceedings other than to court</b>	<b>2,659</b>	<b>2,574</b>	<b>2,804</b>	<b>2,994</b>	<b>2,551</b>	<b>3,112</b>	<b>3,121</b>	<b>3,136</b>	<b>2,676</b>	<b>3,084</b>	<b>4,693</b>	<b>37,657</b>	<b>71,061</b>
<b>All proceedings</b>	<b>15,844</b>	<b>14,229</b>	<b>15,406</b>	<b>14,697</b>	<b>13,937</b>	<b>14,400</b>	<b>14,118</b>	<b>14,174</b>	<b>12,453</b>	<b>14,317</b>	<b>16,047</b>	<b>48,436</b>	<b>208,058</b>
<b>Not proceeded against<sup>#</sup></b>	<b>3,879</b>	<b>3,573</b>	<b>3,616</b>	<b>3,299</b>	<b>3,287</b>	<b>3,283</b>	<b>3,417</b>	<b>3,278</b>	<b>3,257</b>	<b>3,418</b>	<b>3,610</b>	<b>3,349</b>	<b>41,266</b>

\* Prior to December 2000 traffic infringement notices were not included in this category.

<sup>#</sup> Includes person deceased, under 10 years of age, diplomatic immunity, mentally incapable of forming criminal intent, DPP or victim refuses to prosecute and proceeding delayed pending further advice.



---

**CLEARED CRIMINAL INCIDENTS  
FOR SELECTED OFFENCES,  
JANUARY 1998 TO SEPTEMBER 2000,  
NEW SOUTH WALES**

---

**TABLE 3.1** CLEARED CRIMINAL INCIDENTS, SELECTED OFFENCES,  
JANUARY 1998 TO DECEMBER 1998, NEW SOUTH WALES: TYPE OF OFFENCE

<i>Type of offence</i>	<i>Recorded criminal incidents</i>						
	<i>Total number recorded</i>	<i>Cleared within 30 days of reporting</i>		<i>Cleared within 90 days of reporting</i>		<i>Cleared within 180 days of reporting</i>	
		<i>Total number cleared</i>	<i>% cleared</i>	<i>Total number cleared</i>	<i>% cleared</i>	<i>Total number cleared</i>	<i>% cleared</i>
Murder*	100	50	50.0	59	59.0	63	63.0
Assault	58,672	33,585	57.2	36,190	61.7	37,460	63.8
Sexual assault	3,291	802	24.4	1,128	34.3	1,381	42.0
Indecent assault, act of indecency	3,746	1,177	31.4	1,716	45.8	2,073	55.3
Other sexual offences	1,564	415	26.5	505	32.3	550	35.2
Abduction and kidnapping	454	133	29.3	148	32.6	158	34.8
Robbery without a weapon	6,503	751	11.5	879	13.5	946	14.5
Robbery with a firearm	919	128	13.9	166	18.1	192	20.9
Robbery with a weapon not a firearm	4,382	648	14.8	868	19.8	923	21.1
Break and enter – dwelling	85,768	3,362	3.9	4,348	5.1	4,872	5.7
Break and enter – non-dwelling	48,772	2,303	4.7	2,703	5.5	2,962	6.1
Motor vehicle theft	53,866	2,457	4.6	2,810	5.2	3,028	5.6
Steal from motor vehicle	75,497	2,275	3.0	2,508	3.3	2,650	3.5
Steal from retail store	21,112	10,991	52.1	11,320	53.6	11,431	54.1
Steal from dwelling	30,984	2,187	7.1	2,594	8.4	2,789	9.0
Steal from person	11,631	645	5.5	711	6.1	752	6.5
Stock theft	785	35	4.5	44	5.6	51	6.5
Fraud	26,224	6,601	25.2	9,560	36.5	11,254	42.9
Demand money with menaces	1,013	173	17.1	186	18.4	219	21.6
Arson	4,692	213	4.5	249	5.3	283	6.0
Malicious damage to property	89,685	11,534	12.9	12,426	13.9	12,853	14.3

\* Victims for whom incident was cleared.

**TABLE 3.2****CLEARED CRIMINAL INCIDENTS, SELECTED OFFENCES,  
JANUARY 1999 TO DECEMBER 1999, NEW SOUTH WALES: TYPE OF OFFENCE**

<i>Type of offence</i>	<i>Recorded criminal incidents</i>						
	<i>Total number recorded</i>	<i>Cleared within 30 days of reporting</i>		<i>Cleared within 90 days of reporting</i>		<i>Cleared within 180 days of reporting</i>	
		<i>Total number cleared</i>	<i>% cleared</i>	<i>Total number cleared</i>	<i>% cleared</i>	<i>Total number cleared</i>	<i>% cleared</i>
Murder*	123	74	60.2	81	65.9	84	68.3
Assault	58,497	34,321	58.7	37,062	63.4	38,384	65.6
Sexual assault	3,186	798	25.0	1,113	34.9	1,329	41.7
Indecent assault, act of indecency	3,340	873	26.1	1,164	34.9	1,519	45.5
Other sexual offences	1,517	373	24.6	426	28.1	454	29.9
Abduction and kidnapping	401	110	27.4	119	29.7	133	33.2
Robbery without a weapon	6,455	859	13.3	995	15.4	1,065	16.5
Robbery with a firearm	697	89	12.8	151	21.7	171	24.5
Robbery with a weapon not a firearm	3,527	529	15.0	658	18.7	716	20.3
Break and enter – dwelling	77,612	3,443	4.4	4,538	5.8	5,130	6.6
Break and enter – non-dwelling	45,855	2,317	5.1	2,871	6.3	3,196	7.0
Motor vehicle theft	48,328	2,509	5.2	2,953	6.1	3,178	6.6
Steal from motor vehicle	77,784	2,222	2.9	2,481	3.2	2,623	3.4
Steal from retail store	21,049	12,573	59.7	12,868	61.1	13,002	61.8
Steal from dwelling	30,323	2,326	7.7	2,767	9.1	3,001	9.9
Steal from person	11,585	706	6.1	778	6.7	842	7.3
Stock theft	784	42	5.4	52	6.6	60	7.7
Fraud	26,940	7,507	27.9	9,814	36.4	11,219	41.6
Demand money with menaces	963	131	13.6	165	17.1	179	18.6
Arson	4,946	238	4.8	283	5.7	298	6.0
Malicious damage to property	92,063	11,906	12.9	12,912	14.0	13,445	14.6

\* *Victims for whom incident was cleared.*

**TABLE 3.3****CLEARED CRIMINAL INCIDENTS, SELECTED OFFENCES,  
JANUARY 2000 TO SEPTEMBER 2000, NEW SOUTH WALES: TYPE OF OFFENCE**

<i>Type of offence</i>	<i>Recorded criminal incidents</i>				
	<i>Total number recorded</i>	<i>Cleared within 30 days of reporting</i>		<i>Cleared within 90 days of reporting</i>	
		<i>Total number cleared</i>	<i>% cleared</i>	<i>Total number cleared</i>	<i>% cleared</i>
Murder*	74	48	64.9	53	71.6
Assault	45,410	26,424	58.2	28,543	62.9
Sexual assault	2,646	622	23.5	872	33
Indecent assault, act of indecency	2,795	766	27.4	1,072	38.4
Other sexual offences	1,186	284	23.9	338	28.5
Abduction and kidnapping	295	105	35.6	118	40
Robbery without a weapon	5,301	657	12.4	761	14.4
Robbery with a firearm	453	58	12.8	77	17
Robbery with a weapon not a firearm	2,791	416	14.9	514	18.4
Break and enter – dwelling	60,967	2,428	4	3,163	5.2
Break and enter – non-dwelling	37,120	1,588	4.3	2,026	5.5
Motor vehicle theft	38,877	2,042	5.3	2,382	6.1
Steal from motor vehicle	67,912	1,627	2.4	1,879	2.8
Steal from retail store	15,553	9,531	61.3	9,841	63.3
Steal from dwelling	23,776	1,713	7.2	2,070	8.7
Steal from person	9,547	490	5.1	562	5.9
Stock theft	562	26	4.6	32	5.7
Fraud	19,831	4,671	23.6	6,053	30.5
Demand money with menaces	795	135	17	160	20.1
Arson	4,496	231	5.1	253	5.6
Malicious damage to property	69,140	9,434	13.6	10,216	14.8

\* *Victims for whom incident was cleared.*

---

**RECORDED CRIME STATISTICS  
IN NEW SOUTH WALES REGIONS  
FOR SELECTED OFFENCES,  
1998, 1999 AND 2000**

---

**TABLE 4.1** RECORDED CRIMINAL INCIDENTS, 1998 TO 2000: STATISTICAL DIVISION**MURDER**

<i>Statistical Division where offence occurred</i>	<i>Recorded victims</i>					
	<i>1998</i>		<i>1999</i>		<i>2000</i>	
	<i>Number</i>	<i>Rate per 100,000 population</i>	<i>Number</i>	<i>Rate per 100,000 population</i>	<i>Number</i>	<i>Rate per 100,000 population</i>
Sydney	58	1.5	67	1.7	53	1.3
Inner Sydney	14	5.0	17	5.9	9	3.1
Eastern Suburbs	3	1.2	2	0.8	1	0.4
St George – Sutherland	1	0.2	4	0.9	3	0.7
Canterbury – Bankstown	9	2.9	11	3.6	6	1.9
Fairfield – Liverpool	7	2.1	9	2.7	5	1.5
Outer South Western Sydney	1	0.4	0	0.0	3	1.3
Inner Western Sydney	4	2.5	1	0.6	1	0.6
Central Western Sydney	2	0.7	4	1.4	6	2.0
Outer Western Sydney	1	0.3	6	1.9	4	1.3
Blacktown – Baulkham Hills	4	1.1	1	0.3	5	1.3
Lower Northern Sydney	0	0.0	3	1.0	4	1.4
Hornsby – Ku-ring-gai	1	0.4	0	0.0	1	0.4
Northern Beaches	5	2.2	0	0.0	1	0.4
Gosford – Wyong	6	2.1	9	3.1	4	1.4
Hunter	4	0.7	11	1.9	8	1.4
Illawarra	6	1.6	11	2.9	4	1.0
Richmond – Tweed	4	1.9	8	3.8	3	1.4
Mid-North Coast	8	3.0	2	0.7	3	1.1
Northern	2	1.1	4	2.3	10	5.8
North Western	1	0.9	4	3.4	3	2.6
Central West	1	0.6	1	0.6	3	1.7
South Eastern	2	1.1	2	1.1	3	1.6
Murrumbidgee	5	3.4	3	2.0	3	2.0
Murray	2	1.8	6	5.4	4	3.6
Far West	0	0.0	1	4.1	1	4.2
New South Wales*	100	1.6	123	1.9	101	1.6

\* The total for New South Wales includes 7 recorded victims in 1998, 3 recorded victims in 1999 and 3 recorded victims in 2000 where the offence occurred in a custodial institution.

**TABLE 4.2** RECORDED CRIMINAL INCIDENTS, 1998 TO 2000: STATISTICAL DIVISION**ASSAULT**

<i>Statistical Division where offence occurred</i>	<i>Recorded criminal incidents</i>					
	<i>1998</i>		<i>1999</i>		<i>2000</i>	
	<i>Number</i>	<i>Rate per 100,000 population</i>	<i>Number</i>	<i>Rate per 100,000 population</i>	<i>Number</i>	<i>Rate per 100,000 population</i>
Sydney	32,862	825.3	32,520	806.6	33,576	821.8
Inner Sydney	5,986	2,127.2	5,855	2,047.8	6,397	2,204.7
Eastern Suburbs	1,617	664.5	1,677	682.6	1,693	687.3
St George – Sutherland	2,647	629.6	2,254	531.0	2,166	503.8
Canterbury – Bankstown	2,261	734.4	1,951	634.2	1,943	624.3
Fairfield – Liverpool	2,709	827.0	2,765	829.8	2,792	820.0
Outer South Western Sydney	2,586	1,162.5	2,535	1,122.6	2,533	1,107.0
Inner Western Sydney	934	590.7	980	611.3	975	600.4
Central Western Sydney	2,634	916.2	2,726	940.2	2,704	922.2
Outer Western Sydney	2,996	973.5	2,756	886.0	2,665	849.3
Blacktown – Baulkham Hills	3,522	930.9	3,765	971.4	3,964	998.7
Lower Northern Sydney	1,100	385.1	1,149	396.8	1,303	445.7
Hornsby – Ku-ring-gai	664	261.4	575	224.4	635	246.0
Northern Beaches	1,062	469.4	1,154	506.8	1,109	483.6
Gosford – Wyong	2,144	763.3	2,378	829.1	2,697	921.8
Hunter	4,366	770.6	4,471	782.4	5,062	877.5
Illawarra	3,450	907.5	3,494	908.5	3,867	993.4
Richmond – Tweed	2,147	1,039.8	2,039	976.6	2,345	1,110.5
Mid-North Coast	2,940	1,095.6	2,916	1,077.2	3,139	1,150.0
Northern	2,129	1,212.0	2,111	1,209.4	2,172	1,253.9
North Western	2,655	2,269.3	2,395	2,042.6	2,276	1,947.0
Central West	1,724	999.0	2,039	1,178.9	1,968	1,139.2
South Eastern	1,787	990.8	1,858	1,025.5	1,982	1,086.2
Murrumbidgee	1,637	1,099.8	1,735	1,167.4	1,976	1,328.5
Murray	1,078	968.9	1,093	989.4	1,196	1,087.7
Far West	600	2,441.8	642	2,654.2	658	2,789.7
New South Wales*	58,672	926.4	58,497	914.5	61,338	949.0

\* The total for New South Wales includes 1,297 recorded incidents in 1998, 1,184 recorded incidents in 1999 and 1,121 recorded incidents in 2000 where the offence occurred in a custodial institution.

**TABLE 4.3** RECORDED CRIMINAL INCIDENTS, 1998 TO 2000: STATISTICAL DIVISION**SEXUAL ASSAULT**

<i>Statistical Division where offence occurred</i>	<i>Recorded criminal incidents</i>					
	<i>1998</i>		<i>1999</i>		<i>2000</i>	
	<i>Number</i>	<i>Rate per 100,000 population</i>	<i>Number</i>	<i>Rate per 100,000 population</i>	<i>Number</i>	<i>Rate per 100,000 population</i>
Sydney	1,743	43.8	1,747	43.3	1,828	44.7
Inner Sydney	224	79.6	210	73.4	259	89.3
Eastern Suburbs	77	31.6	70	28.5	61	24.8
St George – Sutherland	126	30.0	104	24.5	129	30.0
Canterbury – Bankstown	104	33.8	176	57.2	120	38.6
Fairfield – Liverpool	145	44.3	129	38.7	158	46.4
Outer South Western Sydney	172	77.3	165	73.1	157	68.6
Inner Western Sydney	42	26.6	63	39.3	53	32.6
Central Western Sydney	133	46.3	127	43.8	143	48.8
Outer Western Sydney	174	56.5	172	55.3	194	61.8
Blacktown – Baulkham Hills	246	65.0	196	50.6	220	55.4
Lower Northern Sydney	55	19.3	77	26.6	68	23.3
Hornsby – Ku-ring-gai	38	15.0	45	17.6	58	22.5
Northern Beaches	68	30.1	53	23.3	62	27.0
Gosford – Wyong	139	49.5	160	55.8	146	49.9
Hunter	386	68.1	292	51.1	300	52.0
Illawarra	220	57.9	190	49.4	259	66.5
Richmond – Tweed	151	73.1	81	38.8	125	59.2
Mid-North Coast	131	48.8	151	55.8	187	68.5
Northern	105	59.8	114	65.3	150	86.6
North Western	98	83.8	102	87.0	128	109.5
Central West	116	67.2	144	83.3	135	78.1
South Eastern	102	56.6	97	53.5	134	73.4
Murrumbidgee	93	62.5	122	82.1	127	85.4
Murray	78	70.1	79	71.5	83	75.5
Far West	36	146.5	34	140.6	26	110.2
New South Wales*	3,291	52.0	3,186	49.8	3,504	54.2

\* The total for New South Wales includes 32 recorded incidents in 1998, 33 recorded incidents in 1999 and 22 recorded incidents in 2000 where the offence occurred in a custodial institution.



**TABLE 4.4** RECORDED CRIMINAL INCIDENTS, 1998 TO 2000: STATISTICAL DIVISION**INDECENT ASSAULT, ACT OF INDECENCY, OTHER SEXUAL OFFENCES**

<i>Statistical Division where offence occurred</i>	<i>Recorded criminal incidents</i>					
	<i>1998</i>		<i>1999</i>		<i>2000</i>	
	<i>Number</i>	<i>Rate per 100,000 population</i>	<i>Number</i>	<i>Rate per 100,000 population</i>	<i>Number</i>	<i>Rate per 100,000 population</i>
Sydney	2,989	75.1	2,709	67.2	2,809	68.8
Inner Sydney	378	134.3	323	113.0	330	113.7
Eastern Suburbs	143	58.8	110	44.8	117	47.5
St George – Sutherland	299	71.1	198	46.6	196	45.6
Canterbury – Bankstown	196	63.7	181	58.8	156	50.1
Fairfield – Liverpool	224	68.4	209	62.7	212	62.3
Outer South Western Sydney	235	105.6	225	99.6	231	101.0
Inner Western Sydney	103	65.1	113	70.5	132	81.3
Central Western Sydney	232	80.7	208	71.7	199	67.9
Outer Western Sydney	280	91.0	236	75.9	272	86.7
Blacktown – Baulkham Hills	295	78.0	233	60.1	257	64.8
Lower Northern Sydney	161	56.4	154	53.2	156	53.4
Hornsby – Ku-ring-gai	119	46.8	129	50.3	129	50.0
Northern Beaches	142	62.8	129	56.7	106	46.2
Gosford – Wyong	182	64.8	261	91.0	316	108.0
Hunter	506	89.3	395	69.1	433	75.1
Illawarra	315	82.9	356	92.6	289	74.2
Richmond – Tweed	222	107.5	169	80.9	212	100.4
Mid-North Coast	281	104.7	187	69.1	293	107.3
Northern	194	110.4	243	139.2	227	131.0
North Western	142	121.4	161	137.3	189	161.7
Central West	160	92.7	159	91.9	174	100.7
South Eastern	193	107.0	167	92.2	223	122.2
Murrumbidgee	180	120.9	153	102.9	206	138.5
Murray	83	74.6	91	82.4	115	104.6
Far West	27	109.9	29	119.9	39	165.3
New South Wales*	5,310	83.8	4,857	75.9	5,233	81.0

\* The total for New South Wales includes 18 recorded incidents in 1998, 38 recorded incidents in 1999 and 24 recorded incidents in 2000 where the offence occurred in a custodial institution.

**TABLE 4.5** RECORDED CRIMINAL INCIDENTS, 1998 TO 2000: STATISTICAL DIVISION**ROBBERY WITHOUT A WEAPON**

<i>Statistical Division where offence occurred</i>	<i>Recorded criminal incidents</i>					
	<i>1998</i>		<i>1999</i>		<i>2000</i>	
	<i>Number</i>	<i>Rate per 100,000 population</i>	<i>Number</i>	<i>Rate per 100,000 population</i>	<i>Number</i>	<i>Rate per 100,000 population</i>
Sydney	5,533	139.0	5,600	138.9	6,107	149.5
Inner Sydney	1,766	627.6	1,708	597.4	1,694	583.8
Eastern Suburbs	229	94.1	243	98.9	320	129.9
St George – Sutherland	332	79.0	389	91.6	340	79.1
Canterbury – Bankstown	605	196.5	686	223.0	608	195.3
Fairfield – Liverpool	615	187.7	545	163.6	653	191.8
Outer South Western Sydney	240	107.9	249	110.3	290	126.7
Inner Western Sydney	230	145.5	250	156.0	279	171.8
Central Western Sydney	465	161.7	519	179.0	593	202.3
Outer Western Sydney	220	71.5	221	71.1	295	94.0
Blacktown – Baulkham Hills	323	85.4	323	83.3	468	117.9
Lower Northern Sydney	227	79.5	182	62.8	217	74.2
Hornsby – Ku-ring-gai	83	32.7	94	36.7	139	53.8
Northern Beaches	101	44.6	87	38.2	122	53.2
Gosford – Wyong	97	34.5	104	36.3	89	30.4
Hunter	279	49.2	233	40.8	240	41.6
Illawarra	193	50.8	166	43.2	185	47.5
Richmond – Tweed	70	33.9	64	30.7	64	30.3
Mid-North Coast	104	38.8	76	28.1	79	28.9
Northern	84	47.8	63	36.1	66	38.1
North Western	72	61.5	79	67.4	80	68.4
Central West	61	35.3	61	35.3	51	29.5
South Eastern	40	22.2	38	21.0	42	23.0
Murrumbidgee	36	24.2	41	27.6	36	24.2
Murray	23	20.7	24	21.7	15	13.6
Far West	7	28.5	8	33.1	4	17.0
New South Wales*	6,503	102.7	6,455	100.9	6,972	107.9

\* The total for New South Wales includes 1 recorded incident in 1998, 2 recorded incidents in 1999 and 3 recorded incidents in 2000 where the offence occurred in a custodial institution.

**TABLE 4.6** RECORDED CRIMINAL INCIDENTS, 1998 TO 2000: STATISTICAL DIVISION**ROBBERY WITH A FIREARM**

<i>Statistical Division where offence occurred</i>	<i>Recorded criminal incidents</i>					
	<i>1998</i>		<i>1999</i>		<i>2000</i>	
	<i>Number</i>	<i>Rate per 100,000 population</i>	<i>Number</i>	<i>Rate per 100,000 population</i>	<i>Number</i>	<i>Rate per 100,000 population</i>
Sydney	827	20.8	623	15.5	588	14.4
Inner Sydney	155	55.1	111	38.8	106	36.5
Eastern Suburbs	42	17.3	47	19.1	22	8.9
St George – Sutherland	65	15.5	51	12.0	48	11.2
Canterbury – Bankstown	99	32.2	90	29.3	88	28.3
Fairfield – Liverpool	96	29.3	78	23.4	70	20.6
Outer South Western Sydney	46	20.7	24	10.6	17	7.4
Inner Western Sydney	40	25.3	37	23.1	45	27.7
Central Western Sydney	81	28.2	51	17.6	66	22.5
Outer Western Sydney	47	15.3	21	6.8	16	5.1
Blacktown – Baulkham Hills	54	14.3	24	6.2	21	5.3
Lower Northern Sydney	35	12.3	29	10.0	38	13.0
Hornsby – Ku-ring-gai	17	6.7	24	9.4	17	6.6
Northern Beaches	16	7.1	8	3.5	10	4.4
Gosford – Wyong	34	12.1	28	9.8	24	8.2
Hunter	33	5.8	36	6.3	24	4.2
Illawarra	33	8.7	15	3.9	25	6.4
Richmond – Tweed	2	1.0	6	2.9	6	2.8
Mid-North Coast	6	2.2	6	2.2	2	0.7
Northern	6	3.4	4	2.3	2	1.2
North Western	3	2.6	0	0.0	5	4.3
Central West	4	2.3	2	1.2	1	0.6
South Eastern	2	1.1	1	0.6	1	0.5
Murrumbidgee	3	2.0	3	2.0	1	0.7
Murray	0	0.0	1	0.9	0	0.0
Far West	0	0.0	0	0.0	0	0.0
New South Wales	919	14.5	697	10.9	655	10.1

**TABLE 4.7** RECORDED CRIMINAL INCIDENTS, 1998 TO 2000: STATISTICAL DIVISION**ROBBERY WITH A WEAPON NOT A FIREARM**

<i>Statistical Division where offence occurred</i>	<i>Recorded criminal incidents</i>					
	<i>1998</i>		<i>1999</i>		<i>2000</i>	
	<i>Number</i>	<i>Rate per 100,000 population</i>	<i>Number</i>	<i>Rate per 100,000 population</i>	<i>Number</i>	<i>Rate per 100,000 population</i>
Sydney	3,857	96.9	3,080	76.4	3,257	79.7
Inner Sydney	1,119	397.7	776	271.4	821	283.0
Eastern Suburbs	216	88.8	118	48.0	159	64.6
St George – Sutherland	261	62.1	201	47.4	182	42.3
Canterbury – Bankstown	429	139.3	488	158.6	388	124.7
Fairfield – Liverpool	439	134.0	401	120.3	426	125.1
Outer South Western Sydney	130	58.4	99	43.8	88	38.5
Inner Western Sydney	229	144.8	178	111.0	179	110.2
Central Western Sydney	321	111.7	307	105.9	396	135.1
Outer Western Sydney	144	46.8	75	24.1	95	30.3
Blacktown – Baulkham Hills	174	46.0	129	33.3	159	40.1
Lower Northern Sydney	178	62.3	126	43.5	175	59.9
Hornsby – Ku-ring-gai	60	23.6	72	28.1	53	20.5
Northern Beaches	57	25.2	46	20.2	52	22.7
Gosford – Wyong	100	35.6	64	22.3	84	28.7
Hunter	221	39.0	186	32.5	134	23.2
Illawarra	137	36.0	93	24.2	109	28.0
Richmond – Tweed	18	8.7	21	10.1	23	10.9
Mid-North Coast	27	10.1	30	11.1	26	9.5
Northern	27	15.4	19	10.9	23	13.3
North Western	38	32.5	34	29.0	22	18.8
Central West	23	13.3	19	11.0	41	23.7
South Eastern	8	4.4	23	12.7	10	5.5
Murrumbidgee	13	8.7	11	7.4	11	7.4
Murray	11	9.9	5	4.5	3	2.7
Far West	2	8.1	6	24.8	1	4.2
New South Wales	4,382	69.2	3,527	55.1	3,660	56.6

**TABLE 4.8** RECORDED CRIMINAL INCIDENTS, 1998 TO 2000: STATISTICAL DIVISION**BREAK AND ENTER – DWELLING**

<i>Statistical Division where offence occurred</i>	<i>Recorded criminal incidents</i>					
	<i>1998</i>		<i>1999</i>		<i>2000</i>	
	<i>Number</i>	<i>Rate per 100,000 population</i>	<i>Number</i>	<i>Rate per 100,000 population</i>	<i>Number</i>	<i>Rate per 100,000 population</i>
Sydney	57,525	1,444.8	51,653	1,281.1	55,023	1,346.8
Inner Sydney	6,918	2,458.4	5,174	1,809.6	6,084	2,096.8
Eastern Suburbs	3,584	1,472.8	2,845	1,158.1	3,858	1,566.3
St George – Sutherland	5,254	1,249.7	4,493	1,058.5	4,781	1,112.1
Canterbury – Bankstown	5,432	1,764.3	4,257	1,383.7	3,844	1,235.1
Fairfield – Liverpool	5,056	1,543.5	4,618	1,385.9	5,667	1,664.3
Outer South Western Sydney	3,711	1,668.2	3,744	1,658.0	3,035	1,326.4
Inner Western Sydney	2,749	1,738.6	2,342	1,461.0	2,361	1,454.0
Central Western Sydney	5,039	1,752.8	5,183	1,787.7	4,546	1,550.5
Outer Western Sydney	3,514	1,141.8	3,095	995.0	3,101	988.3
Blacktown – Baulkham Hills	4,892	1,293.0	4,293	1,107.6	4,695	1,182.9
Lower Northern Sydney	3,729	1,305.4	3,931	1,357.5	4,358	1,490.8
Hornsby – Ku-ring-gai	2,387	939.6	2,089	815.1	2,373	919.2
Northern Beaches	1,897	838.4	1,926	845.9	1,970	859.1
Gosford – Wyong	3,363	1,197.3	3,663	1,277.2	4,350	1,486.8
Hunter	6,852	1,209.4	7,048	1,233.3	7,431	1,288.2
Illawarra	6,405	1,684.8	5,678	1,476.4	5,547	1,425.0
Richmond – Tweed	2,139	1,035.9	1,835	878.9	1,943	920.1
Mid-North Coast	2,948	1,098.5	2,556	944.2	2,133	781.4
Northern	2,130	1,212.6	1,788	1,024.4	1,540	889.1
North Western	2,018	1,724.9	1,697	1,447.3	1,639	1,402.1
Central West	1,923	1,114.3	1,950	1,127.4	1,849	1,070.3
South Eastern	1,527	846.6	1,480	816.9	1,396	765.1
Murrumbidgee	1,149	771.9	952	640.6	1,086	730.1
Murray	774	695.6	680	615.6	905	823.0
Far West	378	1,538.3	295	1,219.6	351	1,488.1
New South Wales	85,768	1,354.2	77,612	1,213.3	80,843	1,250.8

**TABLE 4.9** RECORDED CRIMINAL INCIDENTS, 1998 TO 2000: STATISTICAL DIVISION**BREAK AND ENTER – NON-DWELLING**

<i>Statistical Division where offence occurred</i>	<i>Recorded criminal incidents</i>					
	<i>1998</i>		<i>1999</i>		<i>2000</i>	
	<i>Number</i>	<i>Rate per 100,000 population</i>	<i>Number</i>	<i>Rate per 100,000 population</i>	<i>Number</i>	<i>Rate per 100,000 population</i>
Sydney	26,079	655.0	25,395	629.8	27,619	676.0
Inner Sydney	4,692	1,667.4	4,625	1,617.6	4,819	1,660.9
Eastern Suburbs	1,225	503.4	1,081	440.0	1,203	488.4
St George – Sutherland	1,626	386.8	1,863	438.9	2,080	483.8
Canterbury – Bankstown	1,948	632.7	1,682	546.7	1,712	550.1
Fairfield – Liverpool	2,115	645.7	1,968	590.6	2,629	772.1
Outer South Western Sydney	1,412	634.7	1,333	590.3	1,455	635.9
Inner Western Sydney	902	570.5	975	608.2	925	569.7
Central Western Sydney	2,222	772.9	2,217	764.7	2,459	838.7
Outer Western Sydney	2,051	666.4	1,654	531.8	1,893	603.3
Blacktown – Baulkham Hills	1,787	472.3	1,789	461.6	2,102	529.6
Lower Northern Sydney	1,944	680.5	1,948	672.7	2,196	751.2
Hornsby – Ku-ring-gai	762	300.0	951	371.1	1,009	390.8
Northern Beaches	1,308	578.1	1,143	502.0	904	394.2
Gosford – Wyong	2,085	742.3	2,166	755.2	2,233	763.2
Hunter	6,181	1,090.9	6,284	1,099.6	6,420	1,112.9
Illawarra	4,262	1,121.1	3,107	807.9	3,550	912.0
Richmond – Tweed	1,444	699.3	1,324	634.1	1,657	784.7
Mid-North Coast	2,312	861.5	2,100	775.8	2,317	848.8
Northern	1,775	1,010.5	1,654	947.6	1,515	874.6
North Western	1,608	1,374.4	1,196	1,020.0	1,551	1,326.8
Central West	1,554	900.5	1,372	793.2	1,399	809.8
South Eastern	1,356	751.8	1,321	729.1	1,332	730.0
Murrumbidgee	970	651.7	1,028	691.7	987	663.6
Murray	911	818.8	823	745.0	965	877.6
Far West	308	1,253.5	229	946.8	240	1,017.5
New South Wales*	48,772	770.1	45,855	716.9	49,569	766.9

\* The total for New South Wales includes 12 recorded incidents in 1998, 22 recorded incidents in 1999 and 17 recorded incidents in 2000 where the offence occurred in a custodial institution.

**TABLE 4.10** RECORDED CRIMINAL INCIDENTS, 1998 TO 2000: STATISTICAL DIVISION**RECEIVING, GOODS IN CUSTODY**

<i>Statistical Division where offence occurred</i>	<i>Recorded criminal incidents</i>					
	<i>1998</i>		<i>1999</i>		<i>2000</i>	
	<i>Number</i>	<i>Rate per 100,000 population</i>	<i>Number</i>	<i>Rate per 100,000 population</i>	<i>Number</i>	<i>Rate per 100,000 population</i>
Sydney	7,618	191.3	7,882	195.5	7,664	187.6
Inner Sydney	1,952	693.7	1,936	677.1	2,034	701.0
Eastern Suburbs	316	129.9	272	110.7	306	124.2
St George – Sutherland	391	93.0	426	100.4	503	117.0
Canterbury – Bankstown	408	132.5	557	181.1	567	182.2
Fairfield – Liverpool	1,407	429.5	1,286	385.9	1,047	307.5
Outer South Western Sydney	497	223.4	444	196.6	310	135.5
Inner Western Sydney	221	139.8	273	170.3	205	126.2
Central Western Sydney	561	195.1	633	218.3	600	204.6
Outer Western Sydney	395	128.3	409	131.5	423	134.8
Blacktown – Baulkham Hills	566	149.6	736	189.9	651	164.0
Lower Northern Sydney	248	86.8	255	88.1	309	105.7
Hornsby – Ku-ring-gai	131	51.6	131	51.1	152	58.9
Northern Beaches	176	77.8	150	65.9	165	72.0
Gosford – Wyong	349	124.2	374	130.4	392	134.0
Hunter	692	122.1	956	167.3	843	146.1
Illawarra	616	162.0	566	147.2	502	129.0
Richmond – Tweed	267	129.3	367	175.8	376	178.1
Mid-North Coast	412	153.5	378	139.6	363	133.0
Northern	205	116.7	254	145.5	230	132.8
North Western	379	323.9	462	394.0	369	315.7
Central West	330	191.2	290	167.7	303	175.4
South Eastern	267	148.0	250	138.0	238	130.4
Murrumbidgee	166	111.5	195	131.2	171	115.0
Murray	169	151.9	137	124.0	182	165.5
Far West	77	313.4	57	235.7	60	254.4
New South Wales*	11,206	176.9	11,802	184.5	11,315	175.1

\* The total for New South Wales includes 8 recorded incidents in 1998, 8 recorded incidents in 1999 and 14 recorded incidents in 2000 where the offence occurred in a custodial institution.

**TABLE 4.11 RECORDED CRIMINAL INCIDENTS, 1998 TO 2000: STATISTICAL DIVISION****MOTOR VEHICLE THEFT**

<i>Statistical Division where offence occurred</i>	<i>Recorded criminal incidents</i>					
	<i>1998</i>		<i>1999</i>		<i>2000</i>	
	<i>Number</i>	<i>Rate per 100,000 population</i>	<i>Number</i>	<i>Rate per 100,000 population</i>	<i>Number</i>	<i>Rate per 100,000 population</i>
Sydney	41,657	1,046.2	36,288	900.0	38,968	953.8
Inner Sydney	6,398	2,273.6	4,793	1,676.3	4,898	1,688.1
Eastern Suburbs	2,764	1,135.8	1,987	808.8	2,066	838.8
St George – Sutherland	3,700	880.1	3,204	754.9	3,332	775.0
Canterbury – Bankstown	4,451	1,445.7	3,726	1,211.1	3,881	1,246.9
Fairfield – Liverpool	4,348	1,327.4	4,081	1,224.8	4,759	1,397.7
Outer South Western Sydney	2,392	1,075.2	2,262	1,001.7	2,661	1,162.9
Inner Western Sydney	1,882	1,190.3	1,576	983.1	1,666	1,026.0
Central Western Sydney	3,553	1,235.9	3,587	1,237.2	3,770	1,285.8
Outer Western Sydney	2,695	875.7	2,440	784.4	2,614	833.1
Blacktown – Baulkham Hills	3,700	977.9	3,319	856.3	3,628	914.1
Lower Northern Sydney	2,016	705.8	1,614	557.4	1,686	576.8
Hornsby – Ku-ring-gai	648	255.1	586	228.7	742	287.4
Northern Beaches	984	434.9	971	426.4	979	426.9
Gosford – Wyong	2,126	756.9	2,142	746.8	2,286	781.3
Hunter	3,884	685.5	3,722	651.3	4,661	808.0
Illawarra	3,582	942.2	3,731	970.1	3,849	988.8
Richmond – Tweed	818	396.1	871	417.2	835	395.4
Mid-North Coast	958	357.0	892	329.5	995	364.5
Northern	407	231.7	412	236.0	432	249.4
North Western	556	475.2	490	417.9	569	486.8
Central West	593	343.6	521	301.2	609	352.5
South Eastern	629	348.7	493	272.1	461	252.7
Murrumbidgee	361	242.5	529	355.9	449	301.9
Murray	328	294.8	302	273.4	356	323.8
Far West	87	354.1	73	301.8	87	368.8
New South Wales*	53,866	850.5	48,328	755.5	52,279	808.8

\* The total for New South Wales includes 6 recorded incidents in 1998, 4 recorded incidents in 1999 and 8 recorded incidents in 2000 where the offence occurred in a custodial institution.



**TABLE 4.12 RECORDED CRIMINAL INCIDENTS, 1998 TO 2000: STATISTICAL DIVISION****STEAL FROM MOTOR VEHICLE**

<i>Statistical Division where offence occurred</i>	<i>Recorded criminal incidents</i>					
	<i>1998</i>		<i>1999</i>		<i>2000</i>	
	<i>Number</i>	<i>Rate per 100,000 population</i>	<i>Number</i>	<i>Rate per 100,000 population</i>	<i>Number</i>	<i>Rate per 100,000 population</i>
Sydney	53,244	1,337.2	55,425	1,374.6	65,056	1,592.3
Inner Sydney	12,852	4,567.2	12,636	4,419.4	15,251	5,256.2
Eastern Suburbs	3,659	1,503.6	3,889	1,583.0	3,946	1,602.0
St George – Sutherland	4,727	1,124.3	4,517	1,064.2	5,490	1,277.0
Canterbury – Bankstown	4,207	1,366.4	3,788	1,231.3	4,579	1,471.2
Fairfield – Liverpool	3,434	1,048.3	4,197	1,259.6	4,779	1,403.5
Outer South Western Sydney	2,031	913.0	2,077	919.8	2,694	1,177.4
Inner Western Sydney	2,230	1,410.3	2,095	1,306.9	2,357	1,451.5
Central Western Sydney	3,792	1,319.0	4,106	1,416.2	4,857	1,656.5
Outer Western Sydney	2,818	915.6	3,335	1,072.2	3,432	1,093.8
Blacktown – Baulkham Hills	3,207	847.6	3,763	970.9	4,693	1,182.4
Lower Northern Sydney	3,829	1,340.4	4,514	1,558.8	4,903	1,677.3
Hornsby – Ku-ring-gai	1,461	575.1	1,548	604.0	2,069	801.5
Northern Beaches	2,727	1,205.2	2,597	1,140.6	2,414	1,052.7
Gosford – Wyong	2,270	808.1	2,363	823.9	3,592	1,227.7
Hunter	5,570	983.1	6,055	1,059.6	7,286	1,263.0
Illawarra	4,994	1,313.6	4,974	1,293.3	5,327	1,368.5
Richmond – Tweed	2,002	969.5	1,733	830.0	1,950	923.4
Mid-North Coast	2,429	905.1	2,060	761.0	2,334	855.1
Northern	1,445	822.6	1,324	758.5	1,367	789.2
North Western	1,227	1,048.8	1,260	1,074.6	1,526	1,305.4
Central West	1,283	743.5	1,278	738.9	1,356	785.0
South Eastern	1,634	905.9	1,637	903.5	1,169	640.7
Murrumbidgee	802	538.8	1,072	721.3	1,019	685.1
Murray	621	558.1	691	625.5	901	819.4
Far West	239	972.7	274	1,132.8	280	1,187.1
New South Wales*	75,497	1,192.0	77,784	1,216.0	89,576	1,385.9

\* The total for New South Wales includes 7 recorded incidents in 1998, 1 recorded incident in 1999 and 5 recorded incidents in 2000 where the offence occurred in a custodial institution.

**TABLE 4.13 RECORDED CRIMINAL INCIDENTS, 1998 TO 2000: STATISTICAL DIVISION****STEAL FROM RETAIL STORE**

<i>Statistical Division where offence occurred</i>	<i>Recorded criminal incidents</i>					
	<i>1998</i>		<i>1999</i>		<i>2000</i>	
	<i>Number</i>	<i>Rate per 100,000 population</i>	<i>Number</i>	<i>Rate per 100,000 population</i>	<i>Number</i>	<i>Rate per 100,000 population</i>
Sydney	13,750	345.3	13,587	337.0	14,073	344.5
Inner Sydney	2,403	853.9	2,323	812.5	2,516	867.1
Eastern Suburbs	762	313.1	759	308.9	766	311.0
St George – Sutherland	1,130	268.8	1,126	265.3	1,121	260.7
Canterbury – Bankstown	908	294.9	923	300.0	876	281.5
Fairfield – Liverpool	1,260	384.7	1,189	356.8	1,280	375.9
Outer South Western Sydney	695	312.4	763	337.9	711	310.7
Inner Western Sydney	607	383.9	409	255.1	446	274.7
Central Western Sydney	1,484	516.2	1,445	498.4	1,594	543.7
Outer Western Sydney	925	300.6	1,120	360.1	926	295.1
Blacktown – Baulkham Hills	1,127	297.9	1,273	328.4	1,399	352.5
Lower Northern Sydney	877	307.0	818	282.5	812	277.8
Hornsby – Ku-ring-gai	336	132.3	279	108.9	253	98.0
Northern Beaches	502	221.9	473	207.7	515	224.6
Gosford – Wyong	734	261.3	687	239.5	858	293.2
Hunter	1,492	263.3	1,451	253.9	1,643	284.8
Illawarra	1,364	358.8	1,333	346.6	1,200	308.3
Richmond – Tweed	728	352.6	778	372.6	671	317.8
Mid-North Coast	1,121	417.7	1,103	407.5	922	337.8
Northern	501	285.2	450	257.8	474	273.6
North Western	486	415.4	511	435.8	425	363.6
Central West	518	300.2	600	346.9	497	287.7
South Eastern	432	239.5	481	265.5	482	264.2
Murrumbidgee	353	237.2	410	275.9	364	244.7
Murray	305	274.1	267	241.7	266	241.9
Far West	62	252.3	78	322.5	49	207.7
New South Wales	21,112	333.3	21,049	329.1	21,066	325.9

**TABLE 4.14** RECORDED CRIMINAL INCIDENTS, 1998 TO 2000: STATISTICAL DIVISION**STEAL FROM DWELLING**

<i>Statistical Division where offence occurred</i>	<i>Recorded criminal incidents</i>					
	<i>1998</i>		<i>1999</i>		<i>2000</i>	
	<i>Number</i>	<i>Rate per 100,000 population</i>	<i>Number</i>	<i>Rate per 100,000 population</i>	<i>Number</i>	<i>Rate per 100,000 population</i>
Sydney	16,105	404.5	15,957	395.8	16,876	413.1
Inner Sydney	2,321	824.8	2,110	738.0	2,270	782.4
Eastern Suburbs	1,073	440.9	1,151	468.5	1,287	522.5
St George – Sutherland	1,361	323.7	1,325	312.2	1,387	322.6
Canterbury – Bankstown	855	277.7	749	243.5	773	248.4
Fairfield – Liverpool	1,020	311.4	1,106	331.9	1,083	318.1
Outer South Western Sydney	1,136	510.7	1,195	529.2	1,167	510.0
Inner Western Sydney	533	337.1	553	345.0	575	354.1
Central Western Sydney	860	299.1	938	323.5	968	330.1
Outer Western Sydney	1,278	415.3	1,233	396.4	1,246	397.1
Blacktown – Baulkham Hills	1,337	353.4	1,517	391.4	1,653	416.5
Lower Northern Sydney	1,017	356.0	1,064	367.4	1,121	383.5
Hornsby – Ku-ring-gai	818	322.0	829	323.5	825	319.6
Northern Beaches	957	422.9	843	370.2	973	424.3
Gosford – Wyong	1,539	547.9	1,344	468.6	1,548	529.1
Hunter	3,376	595.9	3,417	597.9	3,510	608.5
Illawarra	2,124	558.7	1,946	506.0	2,175	558.7
Richmond – Tweed	1,426	690.6	1,394	667.7	1,465	693.8
Mid-North Coast	1,676	624.5	1,551	573.0	1,632	597.9
Northern	1,113	633.6	1,158	663.4	1,085	626.4
North Western	923	788.9	856	730.1	815	697.2
Central West	1,224	709.3	1,233	712.9	1,203	696.4
South Eastern	1,061	588.3	1,019	562.4	961	526.7
Murrumbidgee	882	592.5	878	590.8	937	630.0
Murray	800	719.0	665	602.0	711	646.6
Far West	274	1,115.1	249	1,029.4	303	1,284.6
New South Wales	30,984	489.2	30,323	474.0	31,673	490.0

**TABLE 4.15 RECORDED CRIMINAL INCIDENTS, 1998 TO 2000: STATISTICAL DIVISION****STEAL FROM PERSON**

<i>Statistical Division where offence occurred</i>	<i>Recorded criminal incidents</i>					
	<i>1998</i>		<i>1999</i>		<i>2000</i>	
	<i>Number</i>	<i>Rate per 100,000 population</i>	<i>Number</i>	<i>Rate per 100,000 population</i>	<i>Number</i>	<i>Rate per 100,000 population</i>
Sydney	9,877	248.1	10,036	248.9	11,052	270.5
Inner Sydney	4,417	1,569.7	4,355	1,523.1	4,778	1,646.7
Eastern Suburbs	567	233.0	598	243.4	638	259.0
St George – Sutherland	490	116.5	506	119.2	575	133.7
Canterbury – Bankstown	733	238.1	690	224.3	719	231.0
Fairfield – Liverpool	679	207.3	638	191.5	722	212.0
Outer South Western Sydney	251	112.8	226	100.1	278	121.5
Inner Western Sydney	487	308.0	567	353.7	558	343.6
Central Western Sydney	528	183.7	691	238.3	742	253.1
Outer Western Sydney	322	104.6	303	97.4	353	112.5
Blacktown – Baulkham Hills	395	104.4	425	109.7	526	132.5
Lower Northern Sydney	446	156.1	448	154.7	517	176.9
Hornsby – Ku-ring-gai	141	55.5	158	61.7	124	48.0
Northern Beaches	227	100.3	252	110.7	294	128.2
Gosford – Wyong	194	69.1	179	62.4	228	77.9
Hunter	416	73.4	361	63.2	408	70.7
Illawarra	404	106.3	374	97.2	460	118.2
Richmond – Tweed	189	91.5	135	64.7	139	65.8
Mid-North Coast	165	61.5	151	55.8	166	60.8
Northern	122	69.5	103	59.0	112	64.7
North Western	137	117.1	117	99.8	149	127.5
Central West	112	64.9	106	61.3	87	50.4
South Eastern	83	46.0	79	43.6	80	43.8
Murrumbidgee	53	35.6	49	33.0	45	30.3
Murray	43	38.6	52	47.1	46	41.8
Far West	29	118.0	20	82.7	16	67.8
New South Wales*	11,631	183.6	11,585	181.1	12,761	197.4

\* The total for New South Wales includes 1 recorded incident in 1998, 2 recorded incidents in 1999 and 1 recorded incident in 2000 where the offence occurred in a custodial institution.

**TABLE 4.16 RECORDED CRIMINAL INCIDENTS, 1998 TO 2000: STATISTICAL DIVISION****FRAUD**

<i>Statistical Division where offence occurred</i>	<i>Recorded criminal incidents</i>					
	<i>1998</i>		<i>1999</i>		<i>2000</i>	
	<i>Number</i>	<i>Rate per 100,000 population</i>	<i>Number</i>	<i>Rate per 100,000 population</i>	<i>Number</i>	<i>Rate per 100,000 population</i>
Sydney	17,402	437.1	18,211	451.7	18,081	442.6
Inner Sydney	3,368	1,196.9	4,056	1,418.6	3,487	1,201.8
Eastern Suburbs	1,006	413.4	1,133	461.2	996	404.4
St George – Sutherland	1,098	261.2	1,249	294.3	1,117	259.8
Canterbury – Bankstown	1,112	361.2	1,243	404.0	1,530	491.6
Fairfield – Liverpool	1,538	469.5	1,826	548.0	1,843	541.3
Outer South Western Sydney	742	333.5	779	345.0	871	380.7
Inner Western Sydney	609	385.2	707	441.0	800	492.7
Central Western Sydney	1,368	475.9	1,566	540.1	1,613	550.1
Outer Western Sydney	907	294.7	961	309.0	1,167	371.9
Blacktown – Baulkham Hills	1,612	426.1	1,258	324.6	1,686	424.8
Lower Northern Sydney	1,565	547.9	1,334	460.7	1,073	367.1
Hornsby – Ku-ring-gai	438	172.4	394	153.7	388	150.3
Northern Beaches	879	388.5	620	272.3	638	278.2
Gosford – Wyong	1,160	413.0	1,085	378.3	872	298.0
Hunter	2,048	361.5	1,723	301.5	1,958	339.4
Illawarra	894	235.2	907	235.8	1,145	294.1
Richmond – Tweed	755	365.6	890	426.3	689	326.3
Mid-North Coast	1,117	416.2	1,205	445.1	1,195	437.8
Northern	857	487.9	721	413.1	553	319.3
North Western	555	474.4	713	608.1	317	271.2
Central West	546	316.4	614	355.0	664	384.4
South Eastern	697	386.4	592	326.7	632	346.4
Murrumbidgee	783	526.0	777	522.8	693	465.9
Murray	514	462.0	485	439.0	450	409.2
Far West	49	199.4	80	330.7	52	220.5
New South Wales*	26,224	414.1	26,940	421.2	26,436	409.0

\* The total for New South Wales includes 7 recorded incidents in 1998, 22 recorded incidents in 1999 and 7 recorded incidents in 2000 where the offence occurred in a custodial institution.

**TABLE 4.17** RECORDED CRIMINAL INCIDENTS, 1998 TO 2000: STATISTICAL DIVISION**MALICIOUS DAMAGE TO PROPERTY**

<i>Statistical Division where offence occurred</i>	<i>Recorded criminal incidents</i>					
	<i>1998</i>		<i>1999</i>		<i>2000</i>	
	<i>Number</i>	<i>Rate per 100,000 population</i>	<i>Number</i>	<i>Rate per 100,000 population</i>	<i>Number</i>	<i>Rate per 100,000 population</i>
Sydney	52,660	1,322.6	52,850	1,310.8	53,665	1,313.5
Inner Sydney	6,629	2,355.7	6,524	2,281.7	5,966	2,056.2
Eastern Suburbs	2,542	1,044.6	2,787	1,134.4	3,010	1,222.0
St George – Sutherland	5,182	1,232.6	5,413	1,275.3	4,939	1,148.8
Canterbury – Bankstown	3,609	1,172.2	3,656	1,188.4	3,442	1,105.9
Fairfield – Liverpool	3,431	1,047.4	3,958	1,187.8	4,262	1,251.7
Outer South Western Sydney	4,340	1,950.9	4,490	1,988.4	4,692	2,050.5
Inner Western Sydney	1,604	1,014.4	1,569	978.8	1,417	872.6
Central Western Sydney	3,381	1,176.1	3,206	1,105.8	3,458	1,179.4
Outer Western Sydney	5,481	1,780.9	5,033	1,618.1	4,981	1,587.5
Blacktown – Baulkham Hills	5,274	1,394.0	5,125	1,322.3	5,358	1,350.0
Lower Northern Sydney	2,692	942.4	2,774	957.9	2,831	968.5
Hornsby – Ku-ring-gai	2,405	946.7	2,166	845.2	2,208	855.3
Northern Beaches	2,288	1,011.2	2,310	1,014.5	2,574	1,122.5
Gosford – Wyong	3,802	1,353.5	3,839	1,338.5	4,527	1,547.2
Hunter	7,932	1,400.0	8,571	1,499.8	9,382	1,626.4
Illawarra	6,852	1,802.3	7,227	1,879.2	6,901	1,772.8
Richmond – Tweed	2,528	1,224.3	2,574	1,232.8	2,739	1,297.1
Mid-North Coast	3,820	1,423.5	4,024	1,486.5	4,063	1,488.5
Northern	3,195	1,818.9	3,403	1,949.6	3,522	2,033.3
North Western	2,515	2,149.7	2,369	2,020.5	2,440	2,087.3
Central West	2,679	1,552.4	2,970	1,717.1	2,795	1,618.0
South Eastern	2,842	1,575.7	3,115	1,719.3	2,946	1,614.6
Murrumbidgee	2,373	1,594.2	2,606	1,753.5	2,515	1,690.9
Murray	1,536	1,380.5	1,653	1,496.4	1,650	1,500.5
Far West	569	2,315.6	594	2,455.8	623	2,641.3
New South Wales*	89,685	1,416.0	92,063	1,439.2	93,381	1,444.8

\* The total for New South Wales includes 184 recorded incidents in 1998, 107 recorded incidents in 1999 and 140 recorded incidents in 2000 where the offence occurred in a custodial institution.

**TABLE 4.18** RECORDED CRIMINAL INCIDENTS, 1998 TO 2000: STATISTICAL DIVISION**POSSESSION AND/OR USE OF COCAINE**

<i>Statistical Division where offence occurred</i>	<i>Recorded criminal incidents</i>					
	<i>1998</i>		<i>1999</i>		<i>2000</i>	
	<i>Number</i>	<i>Rate per 100,000 population</i>	<i>Number</i>	<i>Rate per 100,000 population</i>	<i>Number</i>	<i>Rate per 100,000 population</i>
Sydney	260	6.5	188	4.7	179	4.4
Inner Sydney	166	59.0	101	35.3	78	26.9
Eastern Suburbs	23	9.5	10	4.1	10	4.1
St George – Sutherland	9	2.1	9	2.1	13	3.0
Canterbury – Bankstown	13	4.2	5	1.6	21	6.7
Fairfield – Liverpool	13	4.0	30	9.0	23	6.8
Outer South Western Sydney	0	0.0	0	0.0	1	0.4
Inner Western Sydney	10	6.3	6	3.7	9	5.5
Central Western Sydney	5	1.7	7	2.4	2	0.7
Outer Western Sydney	3	1.0	2	0.6	1	0.3
Blacktown – Baulkham Hills	1	0.3	2	0.5	1	0.3
Lower Northern Sydney	8	2.8	11	3.8	9	3.1
Hornsby – Ku-ring-gai	2	0.8	0	0.0	2	0.8
Northern Beaches	5	2.2	1	0.4	7	3.1
Gosford – Wyong	2	0.7	4	1.4	2	0.7
Hunter	0	0.0	2	0.3	0	0.0
Illawarra	1	0.3	2	0.5	3	0.8
Richmond – Tweed	7	3.4	1	0.5	2	0.9
Mid-North Coast	1	0.4	2	0.7	7	2.6
Northern	1	0.6	0	0.0	3	1.7
North Western	0	0.0	0	0.0	0	0.0
Central West	0	0.0	1	0.6	3	1.7
South Eastern	2	1.1	2	1.1	4	2.2
Murrumbidgee	2	1.3	1	0.7	2	1.3
Murray	0	0.0	1	0.9	0	0.0
Far West	0	0.0	0	0.0	0	0.0
New South Wales*	280	4.4	200	3.1	204	3.2

\* The total for New South Wales includes 6 recorded incidents in 1998 and 1 recorded incident in 2000 where the offence occurred in a custodial institution.

**TABLE 4.19** RECORDED CRIMINAL INCIDENTS, 1998 TO 2000: STATISTICAL DIVISION**POSSESSION AND/OR USE OF NARCOTICS**

<i>Statistical Division where offence occurred</i>	<i>Recorded criminal incidents</i>					
	<i>1998</i>		<i>1999</i>		<i>2000</i>	
	<i>Number</i>	<i>Rate per 100,000 population</i>	<i>Number</i>	<i>Rate per 100,000 population</i>	<i>Number</i>	<i>Rate per 100,000 population</i>
Sydney	2,415	60.7	2,408	59.7	1,842	45.1
Inner Sydney	484	172.0	573	200.4	457	157.5
Eastern Suburbs	30	12.3	24	9.8	30	12.2
St George – Sutherland	61	14.5	73	17.2	80	18.6
Canterbury – Bankstown	105	34.1	135	43.9	130	41.8
Fairfield – Liverpool	1,319	402.7	1,129	338.8	790	232.0
Outer South Western Sydney	51	22.9	41	18.2	26	11.4
Inner Western Sydney	35	22.1	58	36.2	53	32.6
Central Western Sydney	124	43.1	132	45.5	94	32.1
Outer Western Sydney	34	11.0	48	15.4	35	11.2
Blacktown – Baulkham Hills	56	14.8	52	13.4	37	9.3
Lower Northern Sydney	24	8.4	26	9.0	27	9.2
Hornsby – Ku-ring-gai	25	9.8	27	10.5	11	4.3
Northern Beaches	26	11.5	33	14.5	13	5.7
Gosford – Wyong	41	14.6	57	19.9	59	20.2
Hunter	117	20.7	117	20.5	113	19.6
Illawarra	105	27.6	73	19.0	51	13.1
Richmond – Tweed	119	57.6	107	51.2	161	76.2
Mid-North Coast	58	21.6	78	28.8	73	26.7
Northern	28	15.9	48	27.5	18	10.4
North Western	21	17.9	24	20.5	7	6.0
Central West	39	22.6	37	21.4	47	27.2
South Eastern	32	17.7	23	12.7	34	18.6
Murrumbidgee	8	5.4	11	7.4	15	10.1
Murray	5	4.5	6	5.4	6	5.5
Far West	1	4.1	3	12.4	1	4.2
New South Wales*	3,020	47.7	3,009	47.0	2,443	37.8

\* The total for New South Wales includes 72 recorded incidents in 1998, 74 recorded incidents in 1999 and 75 recorded incidents in 2000 where the offence occurred in a custodial institution.



**TABLE 4.20 RECORDED CRIMINAL INCIDENTS, 1998 TO 2000: STATISTICAL DIVISION****POSSESSION AND/OR USE OF CANNABIS**

<i>Statistical Division where offence occurred</i>	<i>Recorded criminal incidents</i>					
	<i>1998</i>		<i>1999</i>		<i>2000</i>	
	<i>Number</i>	<i>Rate per 100,000 population</i>	<i>Number</i>	<i>Rate per 100,000 population</i>	<i>Number</i>	<i>Rate per 100,000 population</i>
Sydney	4,888	122.8	4,960	123.0	4,706	115.2
Inner Sydney	780	277.2	895	313.0	1,245	429.1
Eastern Suburbs	221	90.8	158	64.3	173	70.2
St George – Sutherland	386	91.8	388	91.4	326	75.8
Canterbury – Bankstown	203	65.9	258	83.9	261	83.9
Fairfield – Liverpool	479	146.2	490	147.1	299	87.8
Outer South Western Sydney	273	122.7	265	117.4	219	95.7
Inner Western Sydney	98	62.0	120	74.9	102	62.8
Central Western Sydney	369	128.4	434	149.7	322	109.8
Outer Western Sydney	583	189.4	526	169.1	434	138.3
Blacktown – Baulkham Hills	527	139.3	571	147.3	424	106.8
Lower Northern Sydney	237	83.0	233	80.5	227	77.7
Hornsby – Ku-ring-gai	226	89.0	166	64.8	184	71.3
Northern Beaches	150	66.3	121	53.1	167	72.8
Gosford – Wyong	356	126.7	335	116.8	323	110.4
Hunter	860	151.8	971	169.9	900	156.0
Illawarra	529	139.1	545	141.7	480	123.3
Richmond – Tweed	843	408.3	887	424.8	1,130	535.1
Mid-North Coast	922	343.6	998	368.7	890	326.0
Northern	448	255.0	513	293.9	402	232.1
North Western	343	293.2	408	348.0	308	263.5
Central West	585	339.0	494	285.6	409	236.8
South Eastern	776	430.2	635	350.5	579	317.3
Murrumbidgee	400	268.7	369	248.3	364	244.7
Murray	292	262.4	232	210.0	288	261.9
Far West	76	309.3	78	322.5	69	292.5
New South Wales*	11,278	178.1	11,480	179.5	10,859	168.0

\* The total for New South Wales includes 316 recorded incidents in 1998, 390 recorded incidents in 1999 and 334 recorded incidents in 2000 where the offence occurred in a custodial institution.

**TABLE 4.21** RECORDED CRIMINAL INCIDENTS, 1998 TO 2000: STATISTICAL DIVISION**DEALING, TRAFFICKING IN COCAINE**

<i>Statistical Division where offence occurred</i>	<i>Recorded criminal incidents</i>					
	<i>1998</i>		<i>1999</i>		<i>2000</i>	
	<i>Number</i>	<i>Rate per 100,000 population</i>	<i>Number</i>	<i>Rate per 100,000 population</i>	<i>Number</i>	<i>Rate per 100,000 population</i>
Sydney	115	2.9	203	5.0	86	2.1
Inner Sydney	90	32.0	157	54.9	48	16.5
Eastern Suburbs	6	2.5	18	7.3	9	3.7
St George – Sutherland	5	1.2	12	2.8	2	0.5
Canterbury – Bankstown	3	1.0	5	1.6	6	1.9
Fairfield – Liverpool	4	1.2	6	1.8	2	0.6
Outer South Western Sydney	0	0.0	0	0.0	1	0.4
Inner Western Sydney	0	0.0	1	0.6	1	0.6
Central Western Sydney	1	0.3	2	0.7	3	1.0
Outer Western Sydney	0	0.0	0	0.0	0	0.0
Blacktown – Baulkham Hills	0	0.0	0	0.0	0	0.0
Lower Northern Sydney	4	1.4	1	0.3	4	1.4
Hornsby – Ku-ring-gai	1	0.4	0	0.0	6	2.3
Northern Beaches	1	0.4	0	0.0	4	1.7
Gosford – Wyong	0	0.0	1	0.3	0	0.0
Hunter	0	0.0	1	0.2	1	0.2
Illawarra	0	0.0	0	0.0	0	0.0
Richmond – Tweed	7	3.4	0	0.0	2	0.9
Mid-North Coast	1	0.4	0	0.0	1	0.4
Northern	0	0.0	0	0.0	0	0.0
North Western	0	0.0	0	0.0	0	0.0
Central West	0	0.0	0	0.0	0	0.0
South Eastern	0	0.0	0	0.0	1	0.5
Murrumbidgee	1	0.7	1	0.7	1	0.7
Murray	0	0.0	0	0.0	0	0.0
Far West	0	0.0	0	0.0	0	0.0
New South Wales	124	2.0	205	3.2	92	1.4

**TABLE 4.22** RECORDED CRIMINAL INCIDENTS, 1998 TO 2000: STATISTICAL DIVISION**DEALING, TRAFFICKING IN NARCOTICS**

<i>Statistical Division where offence occurred</i>	<i>Recorded criminal incidents</i>					
	<i>1998</i>		<i>1999</i>		<i>2000</i>	
	<i>Number</i>	<i>Rate per 100,000 population</i>	<i>Number</i>	<i>Rate per 100,000 population</i>	<i>Number</i>	<i>Rate per 100,000 population</i>
Sydney	520	13.1	586	14.5	471	11.5
Inner Sydney	95	33.8	207	72.4	187	64.4
Eastern Suburbs	9	3.7	8	3.3	8	3.2
St George – Sutherland	13	3.1	15	3.5	14	3.3
Canterbury – Bankstown	16	5.2	28	9.1	49	15.7
Fairfield – Liverpool	283	86.4	248	74.4	171	50.2
Outer South Western Sydney	19	8.5	9	4.0	3	1.3
Inner Western Sydney	10	6.3	16	10.0	13	8.0
Central Western Sydney	13	4.5	13	4.5	10	3.4
Outer Western Sydney	8	2.6	5	1.6	6	1.9
Blacktown – Baulkham Hills	1	0.3	7	1.8	0	0.0
Lower Northern Sydney	43	15.1	8	2.8	3	1.0
Hornsby – Ku-ring-gai	1	0.4	1	0.4	2	0.8
Northern Beaches	3	1.3	14	6.1	1	0.4
Gosford – Wyong	6	2.1	7	2.4	4	1.4
Hunter	44	7.8	32	5.6	77	13.3
Illawarra	50	13.2	39	10.1	44	11.3
Richmond – Tweed	72	34.9	80	38.3	116	54.9
Mid-North Coast	16	6.0	40	14.8	26	9.5
Northern	5	2.8	38	21.8	6	3.5
North Western	4	3.4	6	5.1	3	2.6
Central West	26	15.1	25	14.5	53	30.7
South Eastern	15	8.3	7	3.9	17	9.3
Murrumbidgee	3	2.0	6	4.0	9	6.1
Murray	1	0.9	2	1.8	1	0.9
Far West	0	0.0	0	0.0	0	0.0
New South Wales*	761	12.0	864	13.5	829	12.8

\* The total for New South Wales includes 5 recorded incidents in 1998, 3 recorded incidents in 1999 and 6 recorded incidents in 2000 where the offence occurred in a custodial institution.

**TABLE 4.23 RECORDED CRIMINAL INCIDENTS, 1998 TO 2000: STATISTICAL DIVISION****DEALING, TRAFFICKING IN CANNABIS**

<i>Statistical Division where offence occurred</i>	<i>Recorded criminal incidents</i>					
	<i>1998</i>		<i>1999</i>		<i>2000</i>	
	<i>Number</i>	<i>Rate per 100,000 population</i>	<i>Number</i>	<i>Rate per 100,000 population</i>	<i>Number</i>	<i>Rate per 100,000 population</i>
Sydney	412	10.3	389	9.6	381	9.3
Inner Sydney	104	37.0	128	44.8	165	56.9
Eastern Suburbs	24	9.9	12	4.9	9	3.7
St George – Sutherland	25	5.9	23	5.4	18	4.2
Canterbury – Bankstown	18	5.8	24	7.8	27	8.7
Fairfield – Liverpool	38	11.6	35	10.5	30	8.8
Outer South Western Sydney	24	10.8	20	8.9	8	3.5
Inner Western Sydney	7	4.4	9	5.6	7	4.3
Central Western Sydney	16	5.6	26	9.0	17	5.8
Outer Western Sydney	41	13.3	28	9.0	16	5.1
Blacktown – Baulkham Hills	41	10.8	43	11.1	29	7.3
Lower Northern Sydney	11	3.9	11	3.8	13	4.4
Hornsby – Ku-ring-gai	12	4.7	9	3.5	9	3.5
Northern Beaches	18	8.0	4	1.8	9	3.9
Gosford – Wyong	33	11.7	17	5.9	24	8.2
Hunter	37	6.5	73	12.8	46	8.0
Illawarra	86	22.6	56	14.6	33	8.5
Richmond – Tweed	84	40.7	86	41.2	77	36.5
Mid-North Coast	68	25.3	98	36.2	53	19.4
Northern	47	26.8	39	22.3	33	19.1
North Western	45	38.5	36	30.7	21	18.0
Central West	48	27.8	36	20.8	38	22.0
South Eastern	88	48.8	68	37.5	58	31.8
Murrumbidgee	81	54.4	37	24.9	60	40.3
Murray	73	65.6	40	36.2	27	24.6
Far West	10	40.7	13	53.7	7	29.7
New South Wales*	1,094	17.3	988	15.4	846	13.1

\* The total for New South Wales includes 15 recorded incidents in 1998, 17 recorded incidents in 1999 and 12 recorded incidents in 2000 where the offence occurred in a custodial institution.

**TABLE 4.24** RECORDED CRIMINAL INCIDENTS, 1998 TO 2000: STATISTICAL DIVISION**CULTIVATING CANNABIS**

<i>Statistical Division where offence occurred</i>	<i>Recorded criminal incidents</i>					
	<i>1998</i>		<i>1999</i>		<i>2000</i>	
	<i>Number</i>	<i>Rate per 100,000 population</i>	<i>Number</i>	<i>Rate per 100,000 population</i>	<i>Number</i>	<i>Rate per 100,000 population</i>
Sydney	646	16.2	490	12.2	336	8.2
Inner Sydney	45	16.0	28	9.8	24	8.3
Eastern Suburbs	15	6.2	14	5.7	12	4.9
St George – Sutherland	48	11.4	38	9.0	32	7.4
Canterbury – Bankstown	33	10.7	32	10.4	17	5.5
Fairfield – Liverpool	55	16.8	28	8.4	22	6.5
Outer South Western Sydney	58	26.1	37	16.4	31	13.5
Inner Western Sydney	12	7.6	10	6.2	4	2.5
Central Western Sydney	43	15.0	30	10.3	14	4.8
Outer Western Sydney	105	34.1	86	27.6	57	18.2
Blacktown – Baulkham Hills	84	22.2	62	16.0	37	9.3
Lower Northern Sydney	14	4.9	16	5.5	16	5.5
Hornsby – Ku-ring-gai	18	7.1	17	6.6	12	4.6
Northern Beaches	20	8.8	13	5.7	11	4.8
Gosford – Wyong	96	34.2	79	27.5	47	16.1
Hunter	243	42.9	189	33.1	163	28.3
Illawarra	121	31.8	102	26.5	115	29.5
Richmond – Tweed	289	140.0	276	132.2	270	127.9
Mid-North Coast	330	123.0	308	113.8	231	84.6
Northern	124	70.6	131	75.1	105	60.6
North Western	78	66.7	68	58.0	54	46.2
Central West	110	63.7	74	42.8	53	30.7
South Eastern	168	93.1	186	102.7	128	70.2
Murrumbidgee	90	60.5	64	43.1	77	51.8
Murray	78	70.1	42	38.0	59	53.7
Far West	12	48.8	6	24.8	17	72.1
New South Wales*	2,291	36.2	1,936	30.3	1,609	24.9

\* The total for New South Wales includes 2 recorded incidents in 1998 and 1 recorded incident in 2000 where the offence occurred in a custodial institution.

**TABLE 4.25** RECORDED CRIMINAL INCIDENTS, 1998 TO 2000: STATISTICAL DIVISION**OFFENSIVE CONDUCT**

<i>Statistical Division where offence occurred</i>	<i>Recorded criminal incidents</i>					
	<i>1998</i>		<i>1999</i>		<i>2000</i>	
	<i>Number</i>	<i>Rate per 100,000 population</i>	<i>Number</i>	<i>Rate per 100,000 population</i>	<i>Number</i>	<i>Rate per 100,000 population</i>
Sydney	1,138	28.6	1,193	29.6	1,133	27.7
Inner Sydney	231	82.1	269	94.1	235	81.0
Eastern Suburbs	55	22.6	46	18.7	57	23.1
St George – Sutherland	100	23.8	109	25.7	69	16.0
Canterbury – Bankstown	28	9.1	33	10.7	21	6.7
Fairfield – Liverpool	58	17.7	82	24.6	57	16.7
Outer South Western Sydney	89	40.0	73	32.3	63	27.5
Inner Western Sydney	21	13.3	39	24.3	35	21.6
Central Western Sydney	64	22.3	72	24.8	81	27.6
Outer Western Sydney	141	45.8	97	31.2	124	39.5
Blacktown – Baulkham Hills	111	29.3	106	27.3	133	33.5
Lower Northern Sydney	50	17.5	79	27.3	50	17.1
Hornsby – Ku-ring-gai	41	16.1	36	14.0	43	16.7
Northern Beaches	53	23.4	57	25.0	63	27.5
Gosford – Wyong	96	34.2	95	33.1	102	34.9
Hunter	227	40.1	282	49.3	294	51.0
Illawarra	145	38.1	183	47.6	161	41.4
Richmond – Tweed	266	128.8	320	153.3	420	198.9
Mid-North Coast	252	93.9	320	118.2	310	113.6
Northern	259	147.4	292	167.3	269	155.3
North Western	274	234.2	316	269.5	291	248.9
Central West	205	118.8	228	131.8	204	118.1
South Eastern	221	122.5	269	148.5	223	122.2
Murrumbidgee	174	116.9	207	139.3	264	177.5
Murray	132	118.6	123	111.3	102	92.8
Far West	104	423.2	123	508.5	71	301.0
New South Wales	3,397	53.6	3,856	60.3	3,742	57.9

**TABLE 4.26** RECORDED CRIMINAL INCIDENTS, 1998 TO 2000: STATISTICAL DIVISION**OFFENSIVE LANGUAGE**

<i>Statistical Division where offence occurred</i>	<i>Recorded criminal incidents</i>					
	<i>1998</i>		<i>1999</i>		<i>2000</i>	
	<i>Number</i>	<i>Rate per 100,000 population</i>	<i>Number</i>	<i>Rate per 100,000 population</i>	<i>Number</i>	<i>Rate per 100,000 population</i>
Sydney	2,303	57.8	2,475	61.4	1,863	45.6
Inner Sydney	315	111.9	382	133.6	280	96.5
Eastern Suburbs	72	29.6	87	35.4	66	26.8
St George – Sutherland	182	43.3	166	39.1	132	30.7
Canterbury – Bankstown	156	50.7	119	38.7	84	27.0
Fairfield – Liverpool	219	66.9	263	78.9	158	46.4
Outer South Western Sydney	229	102.9	215	95.2	109	47.6
Inner Western Sydney	33	20.9	37	23.1	47	28.9
Central Western Sydney	147	51.1	197	67.9	171	58.3
Outer Western Sydney	275	89.4	294	94.5	190	60.6
Blacktown – Baulkham Hills	262	69.2	339	87.5	284	71.6
Lower Northern Sydney	65	22.8	59	20.4	47	16.1
Hornsby – Ku-ring-gai	86	33.9	70	27.3	71	27.5
Northern Beaches	67	29.6	64	28.1	35	15.3
Gosford – Wyong	195	69.4	183	63.8	189	64.6
Hunter	382	67.4	413	72.3	376	65.2
Illawarra	302	79.4	322	83.7	242	62.2
Richmond – Tweed	353	171.0	446	213.6	335	158.6
Mid-North Coast	552	205.7	490	181.0	423	155.0
Northern	437	248.8	553	316.8	471	271.9
North Western	470	401.7	528	450.3	331	283.2
Central West	387	224.3	504	291.4	321	185.8
South Eastern	379	210.1	447	246.7	384	210.5
Murrumbidgee	309	207.6	307	206.6	308	207.1
Murray	214	192.3	207	187.4	209	190.1
Far West	100	407.0	173	715.2	139	589.3
New South Wales	6,188	97.7	6,865	107.3	5,405	83.6

\* The total for New South Wales includes 3 recorded incidents in 2000 where the offence occurred in a custodial institution.

**TABLE 4.27 RECORDED CRIMINAL INCIDENTS, 1998 TO 2000: STATISTICAL DIVISION****BREACH APPREHENDED VIOLENCE ORDER**

<i>Statistical Division where offence occurred</i>	<i>Recorded criminal incidents</i>					
	<i>1998</i>		<i>1999</i>		<i>2000</i>	
	<i>Number</i>	<i>Rate per 100,000 population</i>	<i>Number</i>	<i>Rate per 100,000 population</i>	<i>Number</i>	<i>Rate per 100,000 population</i>
Sydney	5,118	128.5	4,830	119.8	5,048	123.6
Inner Sydney	493	175.2	476	166.5	580	199.9
Eastern Suburbs	306	125.7	266	108.3	219	88.9
St George – Sutherland	476	113.2	380	89.5	446	103.7
Canterbury – Bankstown	336	109.1	200	65.0	222	71.3
Fairfield – Liverpool	508	155.1	415	124.5	381	111.9
Outer South Western Sydney	527	236.9	489	216.6	527	230.3
Inner Western Sydney	99	62.6	115	71.7	129	79.4
Central Western Sydney	396	137.7	356	122.8	407	138.8
Outer Western Sydney	498	161.8	609	195.8	548	174.6
Blacktown – Baulkham Hills	597	157.8	621	160.2	667	168.1
Lower Northern Sydney	181	63.4	158	54.6	161	55.1
Hornsby – Ku-ring-gai	75	29.5	108	42.1	117	45.3
Northern Beaches	157	69.4	157	69.0	143	62.4
Gosford – Wyong	469	167.0	480	167.4	501	171.2
Hunter	1,020	180.0	962	168.3	1,249	216.5
Illawarra	783	206.0	808	210.1	1,075	276.2
Richmond – Tweed	409	198.1	382	183.0	483	228.7
Mid-North Coast	650	242.2	659	243.4	744	272.6
Northern	318	181.0	314	179.9	366	211.3
North Western	392	335.1	363	309.6	350	299.4
Central West	257	148.9	338	195.4	388	224.6
South Eastern	316	175.2	302	166.7	343	188.0
Murrumbidgee	319	214.3	331	222.7	376	252.8
Murray	179	160.9	195	176.5	198	180.1
Far West	110	447.7	114	471.3	130	551.2
New South Wales*	9,897	156.3	9,600	150.1	10,760	166.5

\* The total for New South Wales includes 26 recorded incidents in 1998, 2 recorded incidents in 1999 and 10 recorded incidents in 2000 where the offence occurred in a custodial institution.



**TABLE 4.28** RECORDED CRIMINAL INCIDENTS, 1998 TO 2000: STATISTICAL DIVISION**PCA DRIVING OFFENCES**

<i>Statistical Division where offence occurred</i>	<i>Recorded criminal incidents</i>					
	<i>1998</i>		<i>1999</i>		<i>2000</i>	
	<i>Number</i>	<i>Rate per 100,000 population</i>	<i>Number</i>	<i>Rate per 100,000 population</i>	<i>Number</i>	<i>Rate per 100,000 population</i>
Sydney	9,279	233.0	12,099	300.1	11,979	293.2
Inner Sydney	961	341.5	1,202	420.4	1,363	469.8
Eastern Suburbs	426	175.1	494	201.1	616	250.1
St George – Sutherland	763	181.5	909	214.2	1,049	244.0
Canterbury – Bankstown	340	110.4	499	162.2	446	143.3
Fairfield – Liverpool	666	203.3	1,062	318.7	952	279.6
Outer South Western Sydney	891	400.5	972	430.4	743	324.7
Inner Western Sydney	171	108.1	289	180.3	328	202.0
Central Western Sydney	458	159.3	574	198.0	617	210.4
Outer Western Sydney	999	324.6	1,216	390.9	1,389	442.7
Blacktown – Baulkham Hills	891	235.5	1,285	331.5	1,035	260.8
Lower Northern Sydney	797	279.0	1,359	469.3	972	332.5
Hornsby – Ku-ring-gai	296	116.5	370	144.4	342	132.5
Northern Beaches	846	373.9	976	428.6	990	431.7
Gosford – Wyong	774	275.6	892	311.0	1,137	388.6
Hunter	1,674	295.5	1,910	334.2	2,201	381.5
Illawarra	1,043	274.3	1,143	297.2	1,131	290.5
Richmond – Tweed	1,024	495.9	1,148	549.8	1,260	596.7
Mid-North Coast	1,171	436.4	1,284	474.3	1,236	452.8
Northern	835	475.4	877	502.4	937	540.9
North Western	576	492.3	732	624.3	715	611.7
Central West	728	421.9	905	523.2	897	519.3
South Eastern	957	530.6	1,204	664.5	1,107	606.7
Murrumbidgee	713	479.0	787	529.5	928	623.9
Murray	522	469.2	662	599.3	595	541.1
Far West	111	451.7	234	967.4	166	703.8
New South Wales	18,633	294.2	22,985	359.3	23,152	358.2

**TABLE 4.29 RECORDED CRIMINAL INCIDENTS, 1998 TO 2000: STATISTICAL DIVISION****DRIVE WHILE DISQUALIFIED**

<i>Statistical Division where offence occurred</i>	<i>Recorded criminal incidents</i>					
	<i>1998</i>		<i>1999</i>		<i>2000</i>	
	<i>Number</i>	<i>Rate per 100,000 population</i>	<i>Number</i>	<i>Rate per 100,000 population</i>	<i>Number</i>	<i>Rate per 100,000 population</i>
Sydney	6,727	169.0	9,880	245.0	10,109	247.4
Inner Sydney	623	221.4	818	286.1	979	337.4
Eastern Suburbs	255	104.8	295	120.1	326	132.3
St George – Sutherland	433	103.0	572	134.8	690	160.5
Canterbury – Bankstown	478	155.3	723	235.0	781	250.9
Fairfield – Liverpool	1,062	324.2	1,938	581.6	1,701	499.6
Outer South Western Sydney	582	261.6	928	411.0	786	343.5
Inner Western Sydney	139	87.9	235	146.6	304	187.2
Central Western Sydney	503	175.0	817	281.8	772	263.3
Outer Western Sydney	643	208.9	898	288.7	996	317.4
Blacktown – Baulkham Hills	911	240.8	1,261	325.3	1,219	307.1
Lower Northern Sydney	263	92.1	368	127.1	359	122.8
Hornsby – Ku-ring-gai	116	45.7	165	64.4	139	53.8
Northern Beaches	189	83.5	259	113.7	255	111.2
Gosford – Wyong	530	188.7	603	210.2	802	274.1
Hunter	969	171.0	1,211	211.9	1,424	246.9
Illawarra	708	186.2	1,068	277.7	1,097	281.8
Richmond – Tweed	401	194.2	598	286.4	701	332.0
Mid-North Coast	550	205.0	709	261.9	725	265.6
Northern	346	197.0	495	283.6	493	284.6
North Western	373	318.8	503	429.0	482	412.3
Central West	425	246.3	571	330.1	575	332.9
South Eastern	427	236.7	538	296.9	572	313.5
Murrumbidgee	295	198.2	352	236.8	465	312.6
Murray	127	114.1	169	153.0	227	206.4
Far West	75	305.2	121	500.2	105	445.2
New South Wales*	11,424	180.4	16,216	253.5	16,985	262.8

\* The total for New South Wales includes 1 recorded incident in 1998, 1 recorded incident in 1999 and 10 recorded incidents in 2000 where the offence occurred in a custodial institution.

**TABLE 4.30 RECORDED CRIMINAL INCIDENTS, 1998 TO 2000: STATISTICAL DIVISION****DRIVE MANNER/SPEED DANGEROUS**

<i>Statistical Division where offence occurred</i>	<i>Recorded criminal incidents</i>					
	<i>1998</i>		<i>1999</i>		<i>2000</i>	
	<i>Number</i>	<i>Rate per 100,000 population</i>	<i>Number</i>	<i>Rate per 100,000 population</i>	<i>Number</i>	<i>Rate per 100,000 population</i>
Sydney	1,243	31.2	1,356	33.6	1,660	40.6
Inner Sydney	112	39.8	120	42.0	167	57.6
Eastern Suburbs	44	18.1	47	19.1	54	21.9
St George – Sutherland	83	19.7	115	27.1	156	36.3
Canterbury – Bankstown	83	27.0	107	34.8	106	34.1
Fairfield – Liverpool	162	49.5	161	48.3	199	58.4
Outer South Western Sydney	112	50.3	144	63.8	163	71.2
Inner Western Sydney	22	13.9	33	20.6	40	24.6
Central Western Sydney	86	29.9	82	28.3	116	39.6
Outer Western Sydney	163	53.0	164	52.7	198	63.1
Blacktown – Baulkham Hills	169	44.7	160	41.3	230	57.9
Lower Northern Sydney	41	14.4	49	16.9	49	16.8
Hornsby – Ku-ring-gai	30	11.8	28	10.9	33	12.8
Northern Beaches	29	12.8	30	13.2	30	13.1
Gosford – Wyong	107	38.1	116	40.4	119	40.7
Hunter	230	40.6	266	46.5	263	45.6
Illawarra	164	43.1	201	52.3	200	51.4
Richmond – Tweed	91	44.1	99	47.4	82	38.8
Mid-North Coast	128	47.7	151	55.8	126	46.2
Northern	63	35.9	96	55.0	74	42.7
North Western	95	81.2	118	100.6	81	69.3
Central West	96	55.6	101	58.4	81	46.9
South Eastern	98	54.3	130	71.8	106	58.1
Murrumbidgee	69	46.4	80	53.8	118	79.3
Murray	57	51.2	60	54.3	83	75.5
Far West	17	69.2	28	115.8	31	131.4
New South Wales*	2,351	37.1	2,687	42.0	2,907	45.0

\* The total for New South Wales includes 1 recorded incident in 1999 and 2 recorded incidents in 2000 where the offence occurred in a custodial institution.

---

# APPENDICES

---

# APPENDIX 1

## OFFENCES INCLUDED IN CLASSIFICATIONS

<i>Classification</i>	<i>Offences included</i>
<b>Homicide:</b>	
Murder	Murder – actual
Attempted murder	Murder – attempted Shoot with intent to murder
Murder accessory, conspiracy	Murder accessory Murder conspiracy
Manslaughter – not driving	Manslaughter
Manslaughter – driving	Culpable driving cause death Culpable navigation cause death
<b>Assault</b>	
	Actual bodily harm Grievous bodily harm (including malicious wounding) Assault officer Common assault Shoot with intent other than to murder
<b>Sexual offences:</b>	
Sexual assault	Sexual assault Aggravated sexual assault Assault with intent to have sexual intercourse
Indecent assault, act of indecency	Indecent assault Aggravated indecent assault Act of indecency Aggravated act of indecency
Other sexual offences	Incest Carnal knowledge Wilful and obscene exposure Bestiality Indecent communication Peep or pry Other sexual offence
<b>Abduction and kidnapping</b>	Abduction and kidnapping
<b>Robbery:</b>	
Robbery without a weapon	Robbery Robbery with striking Robbery with wounding Other robbery
Robbery with a firearm	Armed robbery where weapon is firearm
Robbery with a weapon not a firearm	Armed robbery where weapon is not firearm

## APPENDIX 1 continued

<i>Classification</i>	<i>Offences included</i>
<b>Other offences against the person</b>	Intimidation Malicious damage intent injure / endanger Negligent act cause grievous bodily harm Offence against transport service Other offence against the person
<b>Theft:</b>	
Break and enter – dwelling	Property breaking – all living premises (including, for example, nursing home and tent)  Property breaking – Balcony Clothes line Cubby house Garage (attached) Garage (detached) Garden Gazebo Greenhouse Outhouse Sauna/spa (external) Shed Swimming pool (residential) Tennis court (residential) Verandah Yard
Break and enter – non-dwelling	All property breakings other than to dwellings as defined above
Possess implements	Possess implements
Receiving	Receiving
Goods in custody	Goods in custody Possess property stolen outside NSW
Motor vehicle theft	Theft of motor cars, motor cycles, and other modes of transport (excluding marine vessels and aircraft)
Steal from motor vehicle	Steal from motor vehicle
Steal from retail store	Steal from retail store
Steal from dwelling	Steal from dwelling
Steal from person	Steal from person
Stock theft	Stock theft
Fraud	Larceny clerk / servant / bailee Make / use false instrument Embezzlement

## APPENDIX 1 continued

<b>Classification</b>	<b>Offences included</b>
Fraud <i>continued</i>	Fraudulent appropriation Company / corporate offence Deception offence Possess false misleading statement Other fraud Corrupt commission / practices Counterfeit currency offence under Commonwealth Crimes Ac
Other theft	Other stealing
<b>Demand money with menace</b>	Demand money with menaces
<b>Extortion, blackmail</b>	Extortion, blackmail
<b>Arson</b>	Malicious damage by fire Destroy by fire – financial gain Destroy by fire – intent injure
<b>Malicious damage to property</b>	Malicious damage to property Graffiti Public place – damage fountain / wall Public place – damage shrine / monument
<b>Drug offences:</b>	
Possession and / or use of cocaine	Possess drug unlawfully, where drug type is cocaine Use or administer drug, where drug type is cocaine
Possession and / or use of narcotics	Possess drug unlawfully, where drug type is narcotics Use or administer drug, where drug type is narcotics
Possession and / or use of cannabis	Possess drug unlawfully, where drug type is cannabis Use or administer drug, where drug type is cannabis
Possession and / or use of other drugs	Possess drug unlawfully, where drug type is not cocaine, narcotics or cannabis Use or administer drug, where drug type is not cocaine, narcotics or cannabis
Dealing, trafficking in cocaine	Supply drug where drug type is cocaine
Dealing, trafficking in narcotics	Supply drug where drug type is narcotics
Dealing, trafficking in other drugs	Supply drug where drug type is not cocaine, narcotics or cannabis
Cultivating cannabis	Cultivate cannabis
Importing drugs	Import drugs
Other drug offences	Manufacture drug Forge and / or utter prescription Possess drug utensil Other drug offence

## APPENDIX 1 continued

<i>Classification</i>	<i>Offences included</i>
<b>Offensive behaviour:</b>	
Offensive conduct	Offensive conduct
Offensive language	Offensive language
<b>Prostitution offences</b>	Soliciting / prostitution in public Prostitution – premises Prostitution – live off earnings Consorting Child prostitution Child pornography Other vice offence
<b>Betting and gaming offences</b>	Conduct / play illegal game Conduct / play illegal betting Own / manage premises – gaming Own / manage premises – betting Other gaming offence
<b>Weapons offences</b>	Possess whilst unlicensed Possess shortened firearm Possess prohibited weapon / article Shorten firearm Dealer offence Unlawfully discharge firearm Trespass with firearm Use firearm under influence Discharge firearm into premises Other firearm offence Other firearm licensing offence Not ensure safekeeping Use prohibited weapon / article Sell prohibited weapon / article Other prohibited weapon / article offence Bomb hoax or threat Possess explosive / dangerous article Carry cutting weapon
<b>Against justice procedures:</b>	
Escapee – Corrective Services custody	Escapee – Corrective Services custody
Escapee – Police custody	Escapee – Police custody
Escapee – juvenile detention	Escapee – juvenile detention
Escapee – other custody	Escapee – other custody
Breach Apprehended Violence Order	Breach Apprehended Violence Order



## APPENDIX 1 continued

<b>Classification</b>	<b>Offences included</b>
<b>Against justice procedures:</b> <i>continued</i>	
Breach bail conditions	Breach bail conditions
Breach of recognizance	Breach of recognizance
Fail to appear	Fail to appear
Other offences against justice procedures	Resist / hinder officers Other judicial offence
<b>Driving offences:</b>	
Culpable driving	Culpable driving cause grievous bodily harm Culpable navigation cause grievous bodily harm
PCA	Prescribed concentration alcohol
Drive while disqualified	Drive while disqualified
Drive manner / speed dangerous	Drive manner / speed dangerous
Other driving offences	Negligent driving Drive under influence drug Furious / wanton / menacing driving Registration / insurance offence Breath / drug test offence Other driving offence Other traffic offence Other driving licence offence
<b>Other offences</b>	Accessory after the fact Family Law offence Immigration / customs offence Offences under the Telecommunications Act Offences under the Postal Services Act Offences under the Pawnbrokers Act Offences under the Dog Act Offences under the Prevention of Cruelty to Animals Act Offences under the Children (Care and Protection) Act Offences under the Local Government Act Offences under the Bush Fires Act Offences under the Liquor Act Offences under the Registered Clubs Act Offences under the Inclosed Lands Protection Act Offences under the Security (Protection) Industry Act Possess / publish indecent material Public mischief Intention offences (e.g. armed with intent) Street offences Transport offences Trespass Other offences

## APPENDIX 2

**Map 1: New South Wales Statistical Division boundaries**



# APPENDIX 2 continued

## Map 2: Sydney Statistical Subdivision boundaries



## APPENDIX 3

### LOCAL GOVERNMENT AREAS IN STATISTICAL DIVISIONS

#### *Sydney Statistical Subdivisions*

---

##### *Inner Sydney*

Botany Bay  
Leichhardt  
Marrickville  
South Sydney  
Sydney

##### *Outer South Western Sydney*

Camden  
Campbelltown  
Wollondilly

##### *Lower Northern Sydney*

Hunters Hill  
Lane Cove  
Mosman  
North Sydney  
Ryde  
Willoughby

##### *Eastern Suburbs*

Randwick  
Waverley  
Woollahra

##### *Inner Western Sydney*

Ashfield  
Burwood  
Concord  
Drummoyne  
Strathfield

##### *Hornsby – Ku-ring-gai*

Hornsby  
Ku-ring-gai

##### *St George – Sutherland*

Hurstville  
Kogarah  
Rockdale  
Sutherland

##### *Central Western Sydney*

Auburn  
Holroyd  
Parramatta

##### *Northern Beaches*

Manly  
Pittwater  
Warringah

##### *Canterbury – Bankstown*

Bankstown  
Canterbury

##### *Outer Western Sydney*

Blue Mountains  
Hawkesbury  
Penrith

##### *Gosford – Wyong*

Gosford  
Wyong

##### *Fairfield – Liverpool*

Fairfield  
Liverpool

##### *Blacktown – Baulkham Hills*

Baulkham Hills  
Blacktown

## APPENDIX 3 continued

### NSW Statistical Divisions

<i>Hunter</i>	<i>Illawarra</i>	<i>Richmond – Tweed</i>	<i>Mid-North Coast</i>
Cessnock	Kiama	Ballina	Bellingen
Dungog	Shellharbour	Byron	Coffs Harbour
Gloucester	Shoalhaven	Kyogle	Copmanhurst
Great Lakes	Wingecarribee	Lismore	Grafton
Lake Macquarie	Wollongong	Richmond Valley	Greater Taree
Maitland		Tweed	Hastings
Merriwa			Kempsey
Murrurundi			Lord Howe Island
Muswellbrook			Maclean
Newcastle			Nambucca
Port Stephens			Pristine Waters
Scone			
Singleton			
<i>Northern</i>	<i>North Western</i>	<i>Central West</i>	<i>South Eastern</i>
Armidale Dumaresq	Bogan	Bathurst	Bega Valley
Barraba	Bourke	Bland	Bombala
Bingara	Brewarrina	Blayney	Boorowa
Glen Innes	Cobar	Cabonne	Cooma-Monaro
Gunnedah	Coolah	Cowra	Crookwell
Guyra	Coonabarabran	Evans	Eurobodalla
Inverell	Coonamble	Forbes	Goulburn
Manilla	Dubbo	Greater Lithgow	Gunning
Moree Plains	Gilgandra	Lachlan	Harden
Narrabri	Mudgee	Oberon	Mulwaree
Nundle	Narromine	Orange	Queanbeyan
Parry	Walgett	Parkes	Snowy River
Quirindi	Warren	Rylstone	Tallaganda
Severn	Wellington	Weddin	Yarrowlumla
Tamworth			Yass
Tenterfield			Young
Uralla			
Walcha			
Yallaroi			
<i>Murrumbidgee</i>	<i>Murray</i>	<i>Far West</i>	
Carrathool	Albury	Broken Hill	
Coolamon	Balranald	Central Darling	
Cootamundra	Berrigan	Unincorporated Far West	
Griffith	Conargo		
Gundagai	Corowa		
Hay	Culcairn		
Junee	Deniliquin		
Leeton	Holbrook		
Lockhart	Hume		
Murrumbidgee	Jerilderie		
Narrandera	Murray		
Temora	Tumbarumba		
Tumut	Urana		
Wagga Wagga	Wakool		
	Wentworth		
	Windouran		