
NEW SOUTH WALES RECORDED CRIME STATISTICS 2005

Steve Moffatt, Derek Goh and Suzanne Poynton

NSW BUREAU OF CRIME STATISTICS AND RESEARCH

ACKNOWLEDGEMENTS

The production of this report was greatly assisted by officers within NSW Police. Special thanks are due to officers in Information Technology and in Corporate Information, Executive Support Group. The following officers of the Bureau of Crime Statistics and Research contributed significantly to the production of this report. Thanks to Florence Sin who carried out the desktop publishing of the report. Thanks also to Mark Ramsay and Tracy Painting of the Data Quality Unit for collecting, validating and advising on the data contained in the report.

2006

Published by the NSW Bureau of Crime Statistics and Research
Attorney General's Department
Level 8
St James Centre
111 Elizabeth Street
Sydney

Phone: (02) 9231 9190
Fax: (02) 9231 9187
Email: bcsr@agd.nsw.gov.au
Website: www.lawlink.nsw.gov.au/bocsar
ISSN 1035-9044

INTRODUCTION

This report presents data on crime reported to or detected by NSW Police from January 2003 to December 2005. The data were extracted from the Computerised Operational Policing System (COPS) of the NSW Police in January 2006.

This report includes an overview of trends in the most recent two-year period for a selection of serious offence categories. The overview indicates that in the two years to December 2005, one of the sixteen major offence categories, *malicious damage to property*, has been trending upwards whilst *robbery with a firearm* and six other property offence categories showed significant downward trends. The property offence categories showing a downward trend include *break and enter - dwelling*, *break and enter - non-dwelling*, *motor vehicle theft*, *steal from motor vehicle*, *steal from dwelling* and *steal from person*. Property crime has, in general, continued the downward trends that have been observed since 2002.

In 2004, the Bureau of Crime Statistics and Research conducted a review of our criminal offence categories, resulting in some significant changes, specifically for robbery classifications, drug offences and some other offences against the person. These changes are discussed in detail on page vii of the explanatory notes. There have been no further changes to offence categories since this major review. The only change since our last report is the layout of Tables 3.1, 3.2 and 3.3 for cleared criminal incidents. For these tables, the 180 day reporting period used in previous reports has been excluded and the number of incidents where legal proceedings were commenced against at least one person is presented.

Dr Don Weatherburn
Director

March 2006

CONTENTS

DEFINITIONS AND EXPLANATORY NOTES.	vi
OVERVIEW OF MAJOR TRENDS, 2004 AND 2005, NEW SOUTH WALES	1
Figure 1 Murder	5
Figure 2 Assault	6
Figure 3 Sexual assault and indecent assault, act of indecency, other sexual offences	7
Figure 4 Robbery with and without a weapon	8
Figure 5 Break and enter – dwelling and non-dwelling	9
Figure 6 Motor vehicle theft and steal from motor vehicle	10
Figure 7 Steal from retail store, from dwelling and from person	11
Figure 8 Fraud	12
Figure 9 Malicious damage to property.	13
Figure 10 Bail Court Attendance Notice	14
Figure 11 No-Bail Court Attendance Notice	15
Figure 12 Future Court Attendance Notice	15
Figure 13 Field Court Attendance Notice	16
MONTHLY TRENDS IN RECORDED CRIMINAL INCIDENTS, 2003, 2004 AND 2005, NEW SOUTH WALES	17
Table 1.1 Monthly trends in recorded criminal incidents, 2003 New South Wales: Type of offence	18
Table 1.2 Monthly trends in recorded criminal incidents, 2004 New South Wales: Type of offence	22
Table 1.3 Monthly trends in recorded criminal incidents, 2005 New South Wales: Type of offence	26
MONTHLY TRENDS IN METHODS OF PROCEEDING AGAINST ALLEGED OFFENDERS, 2003, 2004 AND 2005, NEW SOUTH WALES	31
Table 2.1 Monthly trends in methods of proceeding against alleged offenders, 2003 New South Wales: Type of process	32
Table 2.2 Monthly trends in methods of proceeding against alleged offenders, 2004 New South Wales: Type of process	33
Table 2.3 Monthly trends in methods of proceeding against alleged offenders, 2005 New South Wales: Type of process	34
CLEARED CRIMINAL INCIDENTS FOR SELECTED OFFENCES, JANUARY 2003 TO SEPTEMBER 2005, NEW SOUTH WALES	35
Table 3.1 Cleared criminal incidents, selected offences, January 2003 to December 2003, New South Wales: Type of offence	36
Table 3.2 Cleared criminal incidents, selected offences, January 2004 to December 2004, New South Wales: Type of offence	37
Table 3.3 Cleared criminal incidents, selected offences, January 2005 to September 2005, New South Wales: Type of offence	38

**RECORDED CRIME STATISTICS IN NEW SOUTH WALES REGIONS
FOR SELECTED OFFENCES, 2003, 2004 AND 2005**

	39
Table 4.1 Murder	41
Table 4.2 Assault	42
Table 4.2a Assault – domestic violence related	43
Table 4.3 Sexual assault	44
Table 4.4 Indecent assault, act of indecency, other sexual offences.	45
Table 4.5 Robbery without a weapon	46
Table 4.6 Robbery with a firearm	47
Table 4.7 Robbery with a weapon not a firearm	48
Table 4.8 Break and enter – dwelling	49
Table 4.9 Break and enter – non-dwelling	50
Table 4.10 Receiving or handling stolen goods	51
Table 4.11 Motor vehicle theft	52
Table 4.12 Steal from motor vehicle	53
Table 4.13 Steal from retail store	54
Table 4.14 Steal from dwelling	55
Table 4.15 Steal from person	56
Table 4.16 Fraud	57
Table 4.17 Malicious damage to property	58
Table 4.18 Possession and/or use of cocaine	59
Table 4.19 Possession and/or use of narcotics	60
Table 4.20 Possession and/or use of cannabis	61
Table 4.21 Possession and/or use of amphetamines	62
Table 4.22 Possession and/or use of ecstasy	63
Table 4.23 Dealing, trafficking in cocaine	64
Table 4.24 Dealing, trafficking in narcotics	65
Table 4.25 Dealing, trafficking in cannabis	66
Table 4.26 Dealing, trafficking in amphetamines	67
Table 4.27 Dealing, trafficking in ecstasy	68
Table 4.28 Cultivating cannabis	69
Table 4.29 Trespass	70
Table 4.30 Offensive conduct	71
Table 4.31 Offensive language	72
Table 4.32 Breach Apprehended Violence Order	73
Table 4.33 Dangerous or negligent driving	74
Table 4.34 Exceeding the prescribed content of alcohol limit	75
Table 4.35 Exceeding legal speed limit	76
APPENDICES	77
Appendix 1 Offences included in classifications	78
Appendix 2 Maps	84
Appendix 3 Local Government Areas in Statistical Divisions	86

DEFINITIONS AND EXPLANATORY NOTES

The data in this report are extracted from the NSW Police Computerised Operational Policing System (COPS). This system is used for record-keeping for all police operations, not just for criminal matters.

In this report:

- the counting units are recorded *criminal incidents* rather than recorded *offences* (except for murder and manslaughter, where the counting units are victims, and driving offences, where the counting units are legal actions commenced); and
- the data are categorised by date of *reporting* to police (or date of detection by police) rather than by date of *occurrence* of the offence.

RECORDED CRIMINAL INCIDENTS

A criminal incident is defined as an activity detected by or reported to police which:

- involved the same offender(s);
- involved the same victim(s);
- occurred at the one location;
- occurred during one uninterrupted period of time;
- falls into one offence category;
- falls into one incident type (for example, 'actual', 'attempted', 'conspiracy').

One incident may involve two offenders assaulting the same victim. This would be recorded as one assault incident. Alternatively, suppose a man reports to police that he found his neighbour in the process of damaging his car and, when confronted, the neighbour assaulted him. For such an event, two criminal incidents are recorded because two distinct offence types are involved (malicious damage to property and assault) even though the same parties were involved at the same time and in the same place.

RECORDED VICTIMS

For murder and manslaughter only, the counting units used are victims. Under the definition of a criminal incident (same parties, same time, same place, same offence and same incident type) one murder or manslaughter incident could involve two or more persons being killed. Because of the seriousness of these offences and their relatively small numbers, it is considered to be more appropriate to count the number of victims, rather than the number of criminal incidents. Hence, where one murder incident involves a person killing six people, six murder victims are counted.

LEGAL ACTIONS COMMENCED

For driving offences, including driving causing death, the counting unit is the number of legal actions commenced by police rather than the number of incidents recorded. Legal actions include infringement notices, court referrals, formal cautions under the *Young Offenders Act 1997* and youth justice conference referrals. Incidents that do not result in a formal legal process are not counted. Legal actions have replaced recorded incidents for driving offences from 2003 onwards. This is because in July 2003, NSW Police changed the way they classify traffic incidents on COPS and, as a result, the incidence of specific driving offences can no longer be determined directly from police incident categories. Driving offence data from 2003 onwards are not comparable with those published in earlier reports.

OFFENCE CATEGORIES

The classification of offences in this report is broadly based on the Australian Standard Offence Classification (ASOC) devised by the Australian Bureau of Statistics (ABS 1997 Cat. No. 1234.0).

For all *type of offence* classifications used in the report, Appendix 1 lists the offence categories included in the classification. The original offence categories are those used by the NSW Police and do not necessarily correspond exactly with offences defined in legislation.

IMPORTANT NOTE. In 2004 the Bureau of Crime Statistics and Research reviewed the offence classifications used in this report. The review aimed to reduce the size of 'other' offence categories and improve the composition of offence categories. Arising from the 2004 review were several significant changes:

1. The composition of all three types of *robbery (without a weapon, with a firearm and with a weapon not a firearm)* have changed significantly. *Demand money with menaces*, previously counted as a separate offence, was included within *robbery*. The method used to identify involvement of a weapon was improved and consequently the number of armed robberies identified, increased. Robbery statistics in this report should not be compared with robbery statistics reported in publications prior to 2004. Please contact the Bureau for comparable robbery data for earlier years. For comparability, the new counting rules have been retrospectively applied to data from earlier years.
2. Drug offences that involve amphetamines and ecstasy have been separately identified. Prior to 2004 they were contained within '*other drug offences*'.
3. Since the 2004 report, the following offences have been separately enumerated: *harassment, intimidation and private nuisance, receiving or handling stolen goods, trespass, criminal intent, manufacture drug, liquor offences, pornography offences, escape custody, resist or hinder officer and transport regulatory offences*.
4. The following offences are still included in the report but their composition was changed significantly in 2004: *other offences against the person, other offences against justice procedures, prostitution offences, other drug offences, regulated and prohibited weapons offences and other offences*.

There have also been significant changes in the way driving offences are reported. As mentioned above, from 2003 onwards the counting units for driving offences have been the number of legal actions commenced rather than the number of recorded incidents. This change meant that very detailed information became available about the specific offence committed, through the Act and Section of the charge (or Lawpart Code). As a result we have been able to align the offence categories reported for driving offences with those in the Australian Standard Offence Classification (ASOC). Driving offence data from 2003 onwards are not comparable with earlier statistics.

COUNTING PERIOD

Criminal incidents are included in the counting period in which they were reported to or detected by police.

In most cases criminal incidents are recorded on COPS on the day of reporting. It is possible for some updating of data to occur. That is, data extracted for a specified period of time (incidents reported in 2004, for example), may differ according to the date of extraction of the data.

PROCEEDINGS AGAINST ALLEGED OFFENDERS

Police may proceed against alleged offenders through a variety of legal or other processes. Most alleged offenders are referred to the NSW criminal courts. The more serious offences are dealt with by way of a Bail Court Attendance Notice (known as a Charge prior to July 2003) or a No-Bail Court Attendance Notice (known as a Court Attendance Notice (CAN) prior to July 2003). In these instances, the alleged offender is arrested, taken to a police station, fingerprinted and the details of the person and charge recorded. Alternatively a Field Court Attendance Notice may be issued by police at other locations. A Future Court Attendance Notice (previously called a Summons) is used for less serious offences.

Some alleged offenders are proceeded against but diverted from the criminal court system. For many minor offences police can issue Infringement Notices. By paying the prescribed penalty the offender avoids having to go to court. Police also have the discretion to issue warnings to some offenders. Under the *Young Offenders Act 1997*, a juvenile offender can be issued with either a warning, a caution or referred to a youth justice conference. A youth justice conference is a face-to-face meeting between offenders, victims and their support persons. The offending behaviour is discussed and an outcome plan for the offender negotiated. Note that both the police and the courts can refer a young person to a youth justice conference. However, the number of alleged offenders proceeded against by way of a youth conference, as shown in Tables 2.1, 2.2 and 2.3, includes only police referrals to a youth justice conference.

Some alleged offenders are not proceeded against. The alleged offender may be deceased, be under the age of ten years, have diplomatic immunity or be mentally incapable of forming criminal intent. The victim or the Director of Public Prosecutions may decide not to prosecute. A small number of alleged offenders are temporarily not proceeded against while police await further advice, for example whether a juvenile should be referred to a youth justice conference.

CLEARED CRIMINAL INCIDENTS

A cleared criminal incident is one which, in the view of police, has been satisfactorily cleared by the commencement of legal proceedings or otherwise.

An incident is cleared by the commencement of legal proceedings when police have laid a charge or an information against at least one person. The information may have been laid with a view to the issuing of a warrant, summons or other process for the purpose of bringing an offender before the court.

A criminal incident is cleared other than by commencement of legal proceedings when, under normal circumstances, a charge or information would have been laid against at least one person, but, for a variety of reasons, police have been unable to make an arrest, despite knowing the identity of the offender and having sufficient evidence to support a charge. Examples of situations in which an offence may be cleared other than by charge include the following:

- the offender is a juvenile and is cautioned;
- the offender has died before a charge is made or information laid;
- the offender has been committed to a psychiatric institution and is unlikely to be released;
- there is an obstacle to charging, such as diplomatic immunity;
- the complainant or essential witness is dead and proceedings would be aborted;
- the offender is serving a sentence and police consider that no useful purpose would be served by prosecution.

REGIONAL STATISTICS

Statistics are provided on the number of criminal incidents (victims for murder and legal actions for driving offences) recorded for each of the Statistical Divisions of NSW as defined by the Australian Bureau of Statistics (ABS). Within the Sydney Statistical Division, statistics are provided for Statistical Subdivisions. Recorded criminal incidents which occurred in correctional, detention or remand centres, however, are not counted in the Statistical Division in which the incident occurred. Numbers of such incidents are noted at the foot of each table. Appendix 2 provides maps indicating the location of each Statistical Division and Sydney Statistical Subdivision. Appendix 3 lists the Local Government Areas (LGAs) within each of the Statistical Divisions and Statistical Subdivisions. In previous years South Sydney was a LGA within the Inner Sydney SSD. However, since the start of 2004, South Sydney has been incorporated into the Sydney LGA. A criminal incident is counted within a particular region when the location of the offence falls within that region.

For the rate calculations, population data were obtained from the Australian Bureau of Statistics publication: *Regional Population Growth, Australia and New Zealand, 2003-04*, Cat. No. 3218.0 (for 2003 and 2004 population estimates). As no population estimates were available for 2005 when this report was published, rates for 2005 were calculated using 2004 population estimates.

ORGANISATION OF THE REPORT

The report is organised into five main sections as follows. The first section is an overview of major trends in recorded criminal incidents (recorded victims for murder) over the two-year period from January 2004 to December 2005. Figures showing trends in selected offences are presented, as well as summary points indicating which trends are statistically significant and the highest and lowest offending rates in Statistical Divisions of rural NSW and Statistical Subdivisions of Sydney. This section also includes figures showing trends in methods of proceeding against offenders and alleged offenders which lead to attendance at court.

The second section presents, for all categories of offence, the monthly numbers of recorded criminal incidents (recorded victims for murder and manslaughter and legal actions for driving offences). There are three tables in this section, one each for 2003, 2004 and 2005. Each table provides a total for the year and the annual rate per 100,000 population. The data used for the trend analysis in the first section of the report are included in these tables. Note, however, that the trend analysis uses only the most recent two years of data.

The third section provides monthly numbers of alleged offenders proceeded against, by the type of process pursued, for those criminal incidents recorded by NSW Police in the reference year. There are three tables in this section, one each for 2003, 2004 and 2005. Each offender or alleged offender appears only once in the table for each event (there can be more than one criminal incident associated with a single event). The processes are arranged in a hierarchy with the offender or alleged offender appearing in the most serious category where multiple incidents are involved. For example if an event involves two incidents and the alleged offender is charged for one incident but receives a warning for the second incident, the alleged offender appears only in the 'Charged' category. Note that in these tables, the year refers to the year in which the criminal incident or incidents were reported to police. For example, if an incident was reported to police in 2004 but the alleged offender was not apprehended and charged until 2005, the charge is recorded for 2004.

The fourth section provides the number and proportion of cleared criminal incidents, for selected types of offence, for 2003, 2004 and 2005. The offence types included in these tables are those where the crime is likely to have been reported to police, rather than discovered or detected by police. Offence types where the numbers of recorded criminal incidents are influenced by police law enforcement activity (drug offences, for example) are excluded. For such offence types, the clear-up percentages are very high because clearing the offence generally occurs simultaneously with its detection (that is, an arrest is made when the crime is discovered). Note that the format of these tables differs from those appearing in previous reports. **Previous reports included the criminal incidents cleared within 30 days, 90 days and 180 days. This report contains only criminal incidents cleared within 30 and 90 days after the incident was reported to NSW Police.** For each of these reporting periods the table shows (1) the total number of recorded criminal incidents, (2) the total number of cleared incidents (i.e. both criminal incidents where proceedings were commenced and criminal incidents where proceedings were NOT commenced) (3) the number of criminal incidents where police commenced proceedings against at least one person and (4) the percentage of recorded criminal incidents where police commenced proceedings against at least one person. Because the data for this report were extracted in January 2006, the clear-up status after 90 days could not be determined for any offences reported in the last three months of 2005. Hence, the clear-up data for 2005 are for the first nine months of the year only.

In the fifth section of the report there are 35 tables, one for each major offence category. Each table gives the numbers and rates (per 100,000 population) of recorded criminal incidents (for murder, recorded victims and for driving offences, legal actions) for the periods January to December 2003, 2004 and 2005, for each of the NSW Statistical Divisions and for each Statistical Subdivision in Sydney. Recorded criminal incidents which occurred in custodial institutions are counted separately; they are not included in the data for the Statistical Division where the custodial institution is located. Note that both the numbers and rates of recorded criminal incidents in 2004 have been updated since the previous edition.

**OVERVIEW OF MAJOR TRENDS,
2004 AND 2005
NEW SOUTH WALES**

OVERVIEW OF MAJOR TRENDS

TRENDS IN RECORDED CRIME

However trends in recorded crime are presented, their interpretation is a difficult task. The recorded criminal incident data presented in this report are based on information derived from the NSW Police Computerised Operational Policing System (COPS), so only those incidents which are reported to, or detected by, police are included. The trends in recorded crime shown in this report will, therefore, reflect movements in the underlying factors which influence the detection, reporting and recording of crime, as well as changes in the true level of crime in the community.

An alternative measure of the level of crime in NSW is available from crime victim surveys, for example the *Crime and Safety Survey* which is conducted annually by the Australian Bureau of Statistics (ABS).¹ As well as providing an estimate of the victimisation rate in the community for a selected set of offences, this survey measures the proportion of crimes which are not reported to police, and are therefore not recorded in the official statistics. In particular, personal crimes, such as assault and robbery, are less likely to be reported than crimes which involve households. For example, *Crime and Safety, New South Wales, 2004* shows that in the twelve-month period to April 2004, while 91 per cent of motor vehicle thefts and 67 per cent of break and enter offences (crimes against 'households') were reported to police, only 36 per cent of all alleged assault offences were reported.¹ Given that some offences have low reporting rates, it is possible that changes in recorded crime rates over time for these offences largely reflect changes in reporting rates.

Public willingness to report crime, however, is just one of the extraneous factors which can affect trends in recorded crime. Shifts in policing policy can also have a marked effect on the number of recorded drug offences, drink driving offences, cases of offensive behaviour or of receiving stolen goods. For these offences, therefore, recorded rates probably do not accurately reflect actual rates. For this reason, the more detailed comparisons of crime rates and examination of trends in this document are restricted to offence categories which are reported to, rather than detected by, police.

The interpretation of trends in official reports of crime can be considerably more difficult than the interpretation of trends in unemployment or inflation statistics. The ease with which recorded crime statistics can be misunderstood creates a temptation to offer an authoritative explanation for each major crime trend. Indeed, in many instances it is simply impossible to state with any assurance why a particular trend has appeared. This report, therefore, confines itself to identifying and describing trends in recorded crime, rather than explaining them.

The trends examined in this overview cover a twenty-four month period, from January 2004 to December 2005. For comparative purposes, statistics for 2003 have been included in the detailed tables in the sections which follow. For some offence categories, separate trends have been presented for various offence subcategories; in particular, sexual offences, robbery, break and enter, and stealing offences have been further disaggregated.

For each offence category or subcategory (except murder), a statistical test for trend² was applied to the monthly numbers of recorded criminal incidents over the twenty-four month period from January 2004 to December 2005. In the case of murder, the statistical test for trend was applied to the monthly numbers of victims over the same period. For those offences where a statistically significant trend was found, the extent of the trend is indicated by the percentage change between the total recorded number of incidents for the twelve months of January to December 2004 and the total recorded number of incidents for the same period in 2005.

SUMMARY OF TRENDS

A statistical test for trend was applied to the monthly numbers of recorded incidents (except for murder) over the 24 months from January 2004 to December 2005. In the case of murder the test was applied to the number of victims. In the following summary, for those offences where a statistically significant trend was found, the extent of the trend is indicated by percentage change in the total number of recorded criminal incidents between the consecutive twelve-month periods January to December 2004 and January to December 2005.

Significant downward trends

There was a statistically significant downward trend in the monthly numbers of recorded criminal incidents for the following offences:

- robbery with a firearm (down by 26.7%, see Figure 4)
- break and enter – dwelling (down by 11.0%, see Figure 5)
- break and enter – non-dwelling (down by 7.8%, see Figure 5)
- motor vehicle theft (down by 12.4%, see Figure 6)
- steal from motor vehicle (down by 9.0%, see Figure 6)
- steal from dwelling (down by 5.4%, see Figure 7)
- steal from person (down by 12.5%, see Figure 7)

Offences where there was no upward or downward trend

There was no statistically significant generally upward or downward trend in the monthly numbers of recorded criminal incidents³ for any of the following offences:

- murder (number of victims, see Figure 1)
- total assault (see Figure 2)
- assault - domestic violence related (see Figure 2)
- sexual assault (see Figure 3)
- indecent assault, act of indecency, other sexual offences (see Figure 3)
- robbery without a weapon (see Figure 4)
- robbery with a weapon not a firearm (see Figure 4)
- steal from a retail store (see Figure 7)
- fraud (see Figure 8)

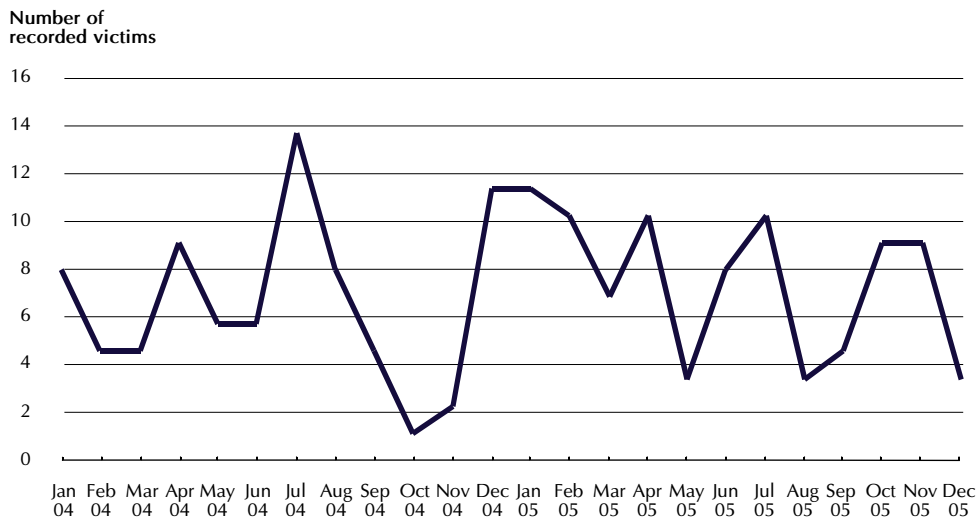
Significant upward trends

- malicious damage to property (up by 8.1%, see Figure 9)

DESCRIPTION OF TRENDS

Graphs in this section show monthly trends for a selected set of offences in NSW, between January 2004 and December 2005. For each offence category, information is given on the statistical significance of any trend shown in the graphs, and the annual rate of offences per 100,000 resident population. In addition, geographical areas with the three highest rates, and the three lowest rates of recorded criminal incidents in NSW are listed. Within the Sydney Statistical Division, recorded crime rates are detailed by Statistical Subdivision (SSD). Outside the Sydney Statistical Division, recorded crime rates are detailed by Statistical Division (SD). The rate calculations are based on resident population data and are calculated as recorded offences per 100,000 population in each Statistical Division or Subdivision.⁴ It should be noted that the Inner Sydney Statistical Subdivision has high recorded crime rates because, compared with other regions, the resident population is small relative to the ‘transient’ or non-resident population which uses the area for business, entertainment, shopping, etc. That is, the high transient population is not reflected in the rate calculation.

Figure 1: Murder



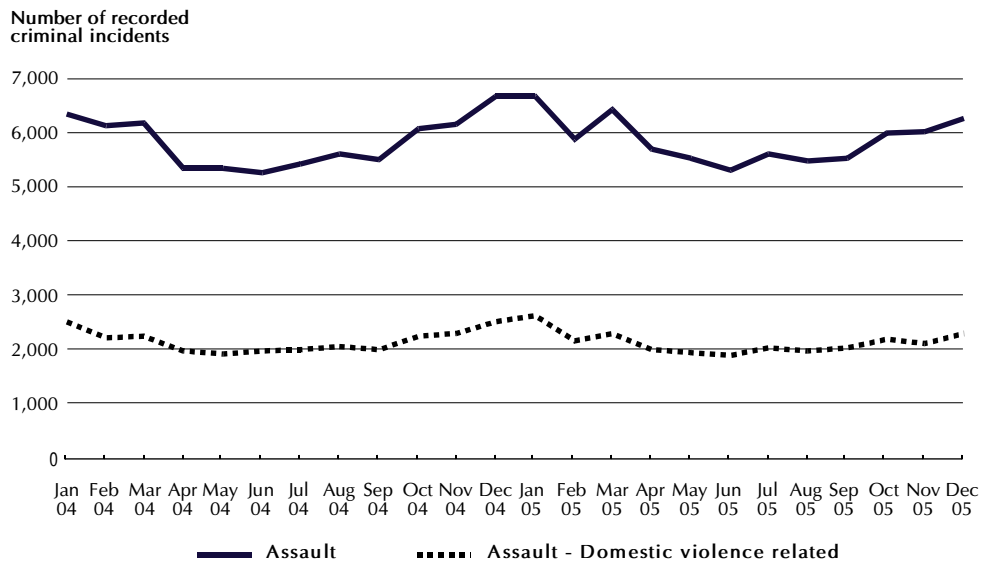
Murder

With such small numbers of murder victims, the month to month variation is extremely marked. For this reason it is difficult to detect trends over such a short period. Because of the small numbers of murder victims, it is not sensible to make regional comparisons.

Trend (Jan 2004 - Dec 2005): No statistically significant upward or downward trend.

NSW annual rate (2005): 1.2 per 100,000 population

Figure 2: Assault



Assault

Total assault

Trend (Jan 2004 - Dec 2005): No statistically significant upward or downward trend.

NSW annual rate (2005): 1,047.3 per 100,000 population

Highest rates:
 North Western SD - 2,397.0 per 100,000 population
 Far West SD - 2,271.4 per 100,000 population
 Inner Sydney SSD - 2,228.8 per 100,000 population

Lowest rates:
 Central Northern Sydney SSD - 352.0 per 100,000 population
 Lower Northern Sydney SSD - 417.7 per 100,000 population
 Northern Beaches SSD - 503.9 per 100,000 population

Assault - Domestic violence related

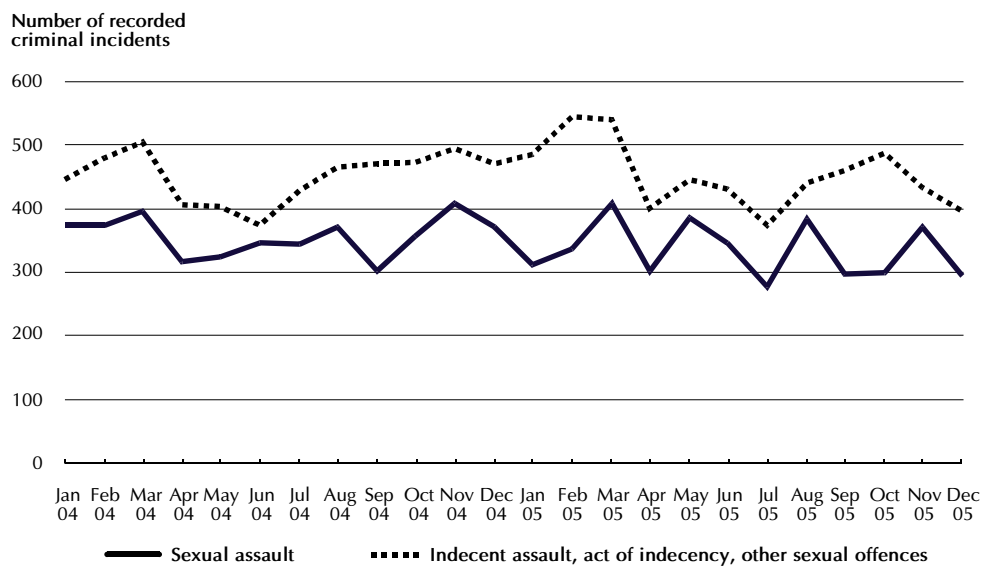
Trend (Jan 2004 - Dec 2005): No statistically significant upward or downward trend.

NSW annual rate (2005): 384.3 per 100,000 population

Highest rates:
 Far West SD - 1,101.9 per 100,000 population
 North Western SD - 1,067.9 per 100,000 population
 Blacktown SSD - 628.7 per 100,000 population

Lowest rates:
 Lower Northern Sydney SSD - 129.8 per 100,000 population
 Central Northern Sydney SSD - 136.9 per 100,000 population
 Northern Beaches SSD - 175.6 per 100,000 population

Figure 3: Sexual assault and indecent assault, act of indecency, other sexual offences



Sexual offences

Sexual assault

Trend (Jan 2004 - Dec 2005): No statistically significant upward or downward trend.

NSW annual rate (2005): 59.7 per 100,000 population

Highest rates:
 Far West SD - 143.5 per 100,000 population
 North Western SD - 142.3 per 100,000 population
 Northern SD - 108.3 per 100,000 population

Lowest rates:
 Lower Northern Sydney SSD - 18.7 per 100,000 population
 Central Northern Sydney SSD - 19.6 per 100,000 population
 Inner Western Sydney SSD - 24.9 per 100,000 population

Indecent assault, act of indecency, other sexual offences

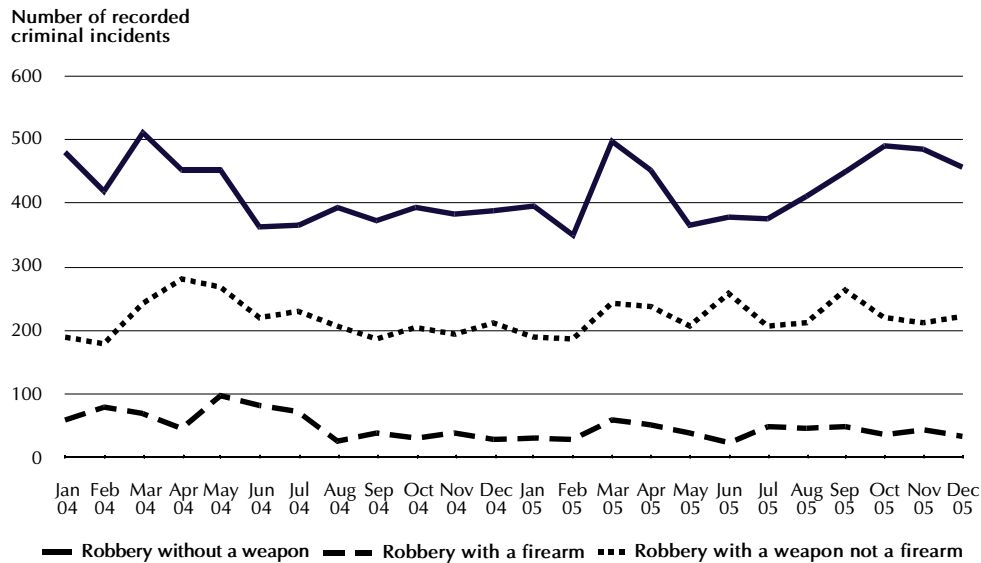
Trend (Jan 2004 - Dec 2005): No statistically significant upward or downward trend.

NSW annual rate (2005): 81.0 per 100,000 population

Highest rates:
 North Western SD - 200.4 per 100,000 population
 Far West SD - 143.5 per 100,000 population
 Richmond-Tweed SD - 125.5 per 100,000 population

Lowest rates:
 Central Northern Sydney SSD - 37.1 per 100,000 population
 Lower Northern Sydney SSD - 41.8 per 100,000 population
 St George-Sutherland SSD - 48.4 per 100,000 population

Figure 4: Robbery with and without a weapon



Robbery

Robbery without a weapon*

Trend (Jan 2004 - Dec 2005): No statistically significant upward or downward trend.

NSW annual rate (2005): 75.9 per 100,000 population

Highest rates:
 Inner Sydney SSD - 519.3 per 100,000 population
 Canterbury-Bankstown SSD - 126.9 per 100,000 population
 Central Western Sydney SSD - 115.7 per 100,000 population

Lowest rates:
 Murray SD - 13.1 per 100,000 population
 South Eastern SD - 16.0 per 100,000 population
 Mid-North Coast SD - 24.7 per 100,000 population

Robbery with a firearm*

Trend (Jan 2004 - Dec 2005): A statistically significant downward trend (down by 26.7%)

NSW annual rate (2005): 7.2 per 100,000 population

Highest rates:
 Inner Sydney SSD - 24.8 per 100,000 population
 Central Western Sydney SSD - 20.0 per 100,000 population
 Inner Western Sydney SSD - 19.6 per 100,000 population

Lowest rates:
 No *robbery with a firearm* incidents were recorded in Richmond-Tweed SD
 Central West SD - 0.6 per 100,000 population
 Murrumbidgee SD - 0.7 per 100,000 population

Robbery with a weapon not a firearm*

Trend (Jan 2004 - Dec 2005): No statistically significant upward or downward trend.

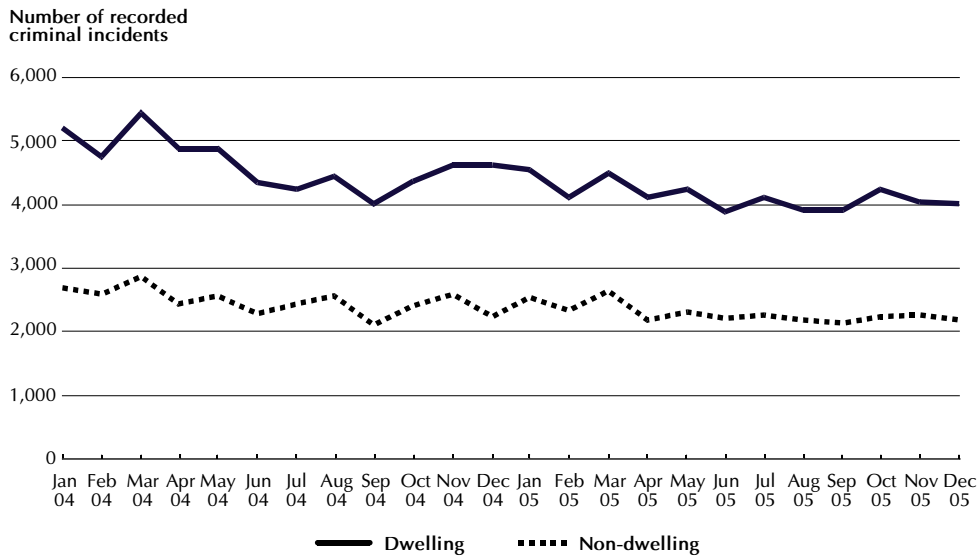
NSW annual rate (2005): 39.5 per 100,000 population

Highest rates:
 Inner Sydney SSD - 196.6 per 100,000 population
 Inner Western Sydney SSD - 102.0 per 100,000 population
 Canterbury-Bankstown SSD - 90.5 per 100,000 population

Lowest rates:
 Murray SD - 2.6 per 100,000 population
 South Eastern SD - 5.0 per 100,000 population
 Central West SD - 6.7 per 100,000 population

* The composition of robbery offences changed significantly for the 2004 report. For robbery offences, reports from 2004 onwards cannot be compared with reports prior to 2004. (See Explanatory Notes, page vii).

Figure 5: Break and enter – dwelling and non-dwelling



Break and enter

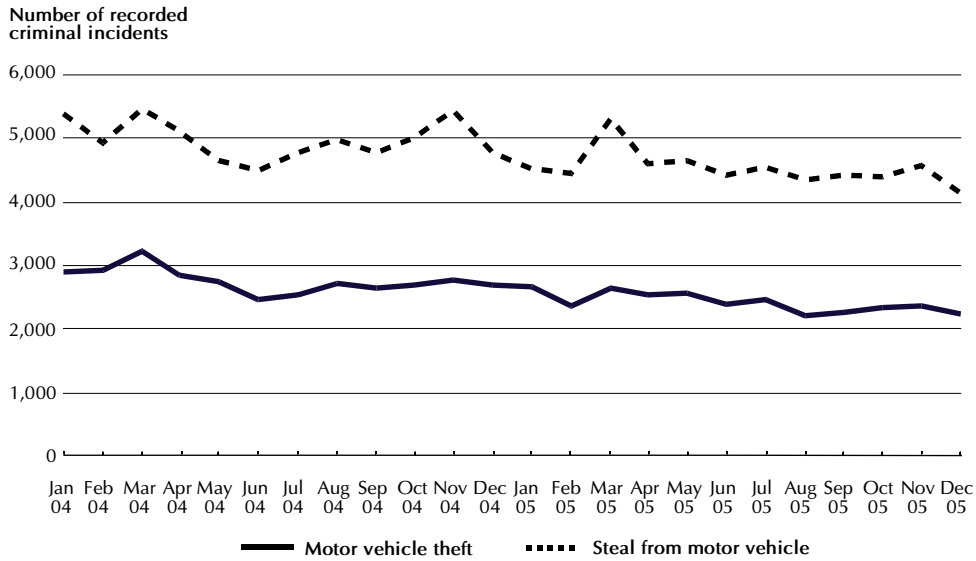
Break and enter – dwelling

- Trend (Jan 2004 - Dec 2005):** A statistically significant downward trend (down by 11.0%)
- NSW annual rate (2005):** 738.3 per 100,000 population
- Highest rates:**
 - Inner Sydney SSD - 1,308.6 per 100,000 population
 - North Western SD - 1,244.8 per 100,000 population
 - Far West SD - 1,215.9 per 100,000 population
- Lowest rates:**
 - Northern Beaches SSD - 407.5 per 100,000 population
 - Central Northern Sydney SSD - 429.2 per 100,000 population
 - St George-Sutherland SSD - 490.6 per 100,000 population

Break and enter – non-dwelling

- Trend (Jan 2004 - Dec 2005):** A statistically significant downward trend (down by 7.8%)
- NSW annual rate (2005):** 408.4 per 100,000 population
- Highest rates:**
 - Inner Sydney SSD - 902.2 per 100,000 population
 - North Western SD - 878.4 per 100,000 population
 - Mid-North Coast SD - 616.4 per 100,000 population
- Lowest rates:**
 - Central Northern Sydney SSD - 206.3 per 100,000 population
 - Northern Beaches SSD - 234.5 per 100,000 population
 - St George-Sutherland SSD - 234.7 per 100,000 population

Figure 6: Motor vehicle theft and steal from motor vehicle



Motor vehicle theft and steal from motor vehicle

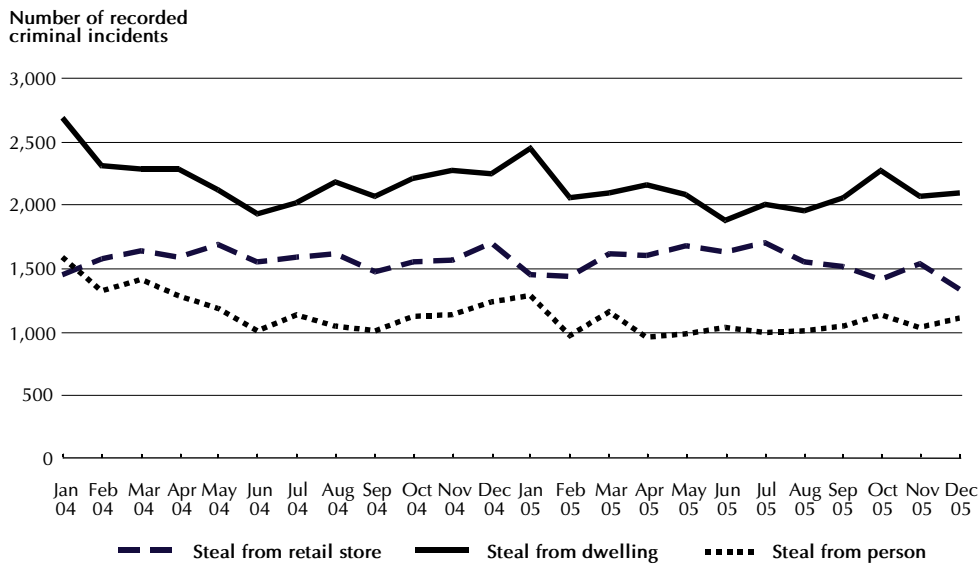
Motor vehicle theft

- Trend (Jan 2004 - Dec 2005):** A statistically significant downward trend (down by 12.4%).
- NSW annual rate (2005):** 432.4 per 100,000 population
- Highest rates:**
 - Inner Sydney SSD - 791.9 per 100,000 population
 - Central Western Sydney SSD - 743.1 per 100,000 population
 - Canterbury-Bankstown SSD - 730.8 per 100,000 population
- Lowest rates:**
 - Central Northern Sydney SSD - 171.1 per 100,000 population
 - Murrumbidgee SD - 189.4 per 100,000 population
 - Northern SD - 190.4 per 100,000 population

Steal from motor vehicle

- Trend (Jan 2004 - Dec 2005):** A statistically significant downward trend (down by 9.0%).
- NSW annual rate (2005):** 808.4 per 100,000 population
- Highest rates:**
 - Inner Sydney SSD - 2,351.1 per 100,000 population
 - North Western SD - 1,137.8 per 100,000 population
 - Central Western Sydney SSD - 1,039.4 per 100,000 population
- Lowest rates:**
 - Central Northern Sydney SSD - 467.2 per 100,000 population
 - South Eastern SD - 468.3 per 100,000 population
 - St George-Sutherland SSD - 591.2 per 100,000 population

Figure 7: Steal from retail store, from dwelling and from person



Stealing

Steal from retail store

- Trend (Jan 2004 - Dec 2005):** No statistically significant upward or downward trend.
- NSW annual rate (2005):** 271.9 per 100,000 population
- Highest rates:**
 - Inner Sydney SSD - 668.6 per 100,000 population
 - Eastern Suburbs SSD - 406.0 per 100,000 population
 - Blacktown SSD - 358.7 per 100,000 population
- Lowest rates:**
 - Central Northern Sydney SSD - 132.2 per 100,000 population
 - Far West SD - 164.7 per 100,000 population
 - Northern Beaches SSD - 169.2 per 100,000 population

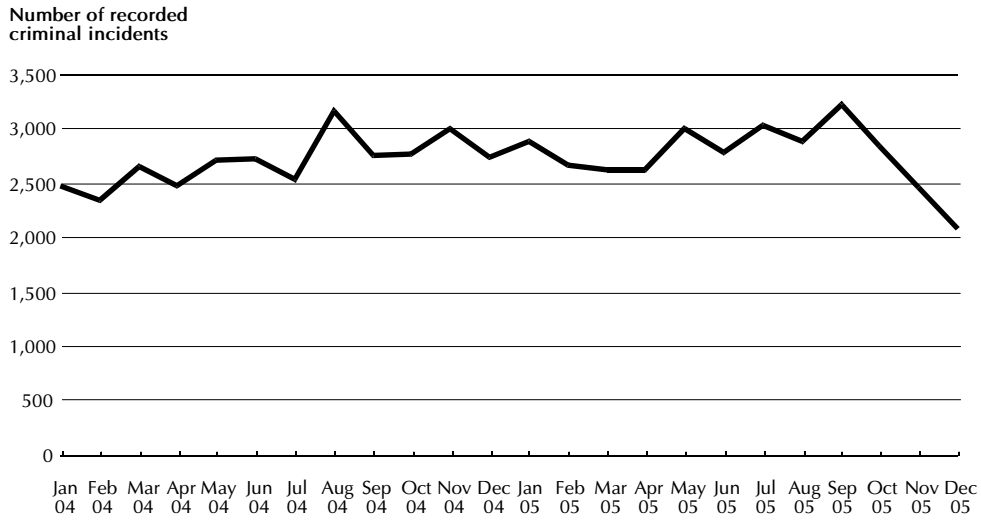
Steal from dwelling

- Trend (Jan 2004 - Dec 2005):** A statistically significant downward trend (down by 5.4%)
- NSW annual rate (2005):** 371.5 per 100,000 population
- Highest rates:**
 - Far West SD - 916.2 per 100,000 population
 - North Western SD - 668.7 per 100,000 population
 - Murrumbidgee SD - 614.5 per 100,000 population
- Lowest rates:**
 - St George-Sutherland SSD - 169.8 per 100,000 population
 - Canterbury-Bankstown SSD - 178.8 per 100,000 population
 - Central Northern Sydney SSD - 179.6 per 100,000 population

Steal from person

- Trend (Jan 2004 - Dec 2005):** A statistically significant downward trend (down by 12.5%)
- NSW annual rate (2005):** 186.4 per 100,000 population
- Highest rates:**
 - Inner Sydney SSD - 1,584.7 per 100,000 population
 - Eastern Suburbs SSD - 316.6 per 100,000 population
 - Inner Western Sydney SSD - 283.5 per 100,000 population
- Lowest rates:**
 - South Eastern SD - 38.4 per 100,000 population
 - Murray SD - 55.8 per 100,000 population
 - Northern SD - 55.8 per 100,000 population

Figure 8: Fraud[#]



[#] Due to the time lag between a fraud offence being reported to police and the incident being recorded and verified on COPS, the number of incidents in the last quarter of 2005 may be low.

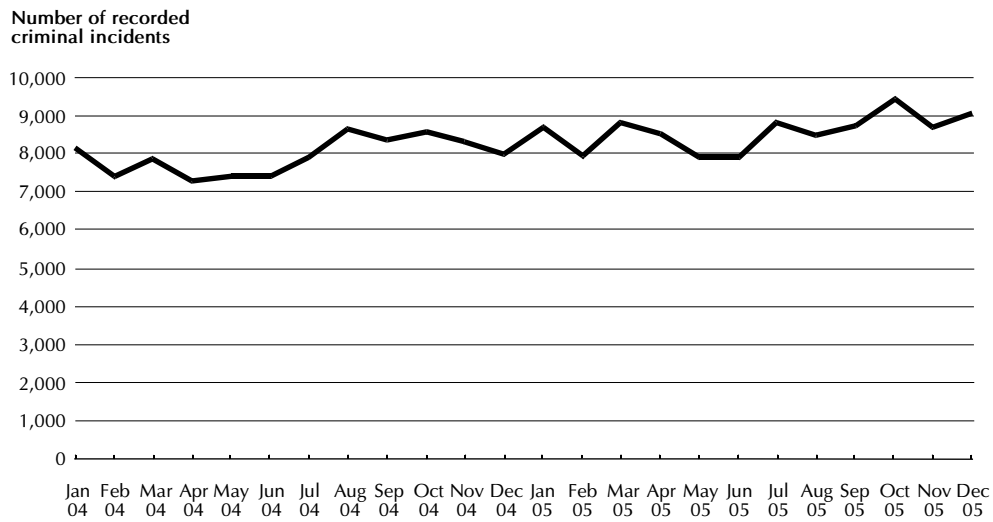
Fraud

Trend (Jan 2004 - Dec 2005): No statistically significant upward or downward trend.

NSW annual rate (2005): 492.0 per 100,000 population

Highest rates:
 Inner Sydney SSD - 1,833.4 per 100,000 population
 Central Western Sydney SSD - 778.1 per 100,000 population
 Eastern Suburbs SSD - 690.7 per 100,000 population

Lowest rates:
 Northern SD - 224.4 per 100,000 population
 Central West SD - 242.1 per 100,000 population
 South Eastern SD - 267.3 per 100,000 population

Figure 9: Malicious damage to property**Malicious damage to property**

Trend (Jan 2004 - Dec 2005): A statistically significant upward trend (up by 8.1%)

NSW annual rate (2005): 1,527.4 per 100,000 population

Highest rates:
 North Western SD - 2,863.6 per 100,000 population
 Far West SD - 2,786.5 per 100,000 population
 Northern SD - 2,182.9 per 100,000 population

Lowest rates:
 Central Northern Sydney SSD - 838.0 per 100,000 population
 Lower Northern Sydney SSD - 900.9 per 100,000 population
 Northern Beaches SSD - 918.6 per 100,000 population

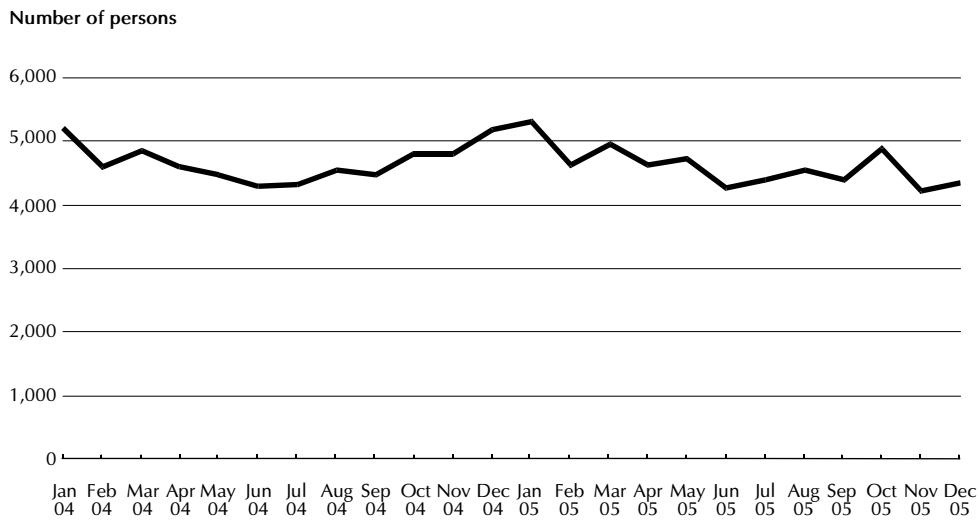
TRENDS IN METHODS OF PROCEEDING AGAINST OFFENDERS OR ALLEGED OFFENDERS

The information that follows highlights trends in the number of persons proceeded against to court by NSW Police. These proceedings relate to criminal incidents recorded between January 2004 and December 2005.

Bail Court Attendance Notice*

Trend (Jan 2004 - Dec 2005): No statistically significant upward or downward trend.

Figure 10: Persons issued with Bail Court Attendance Notice

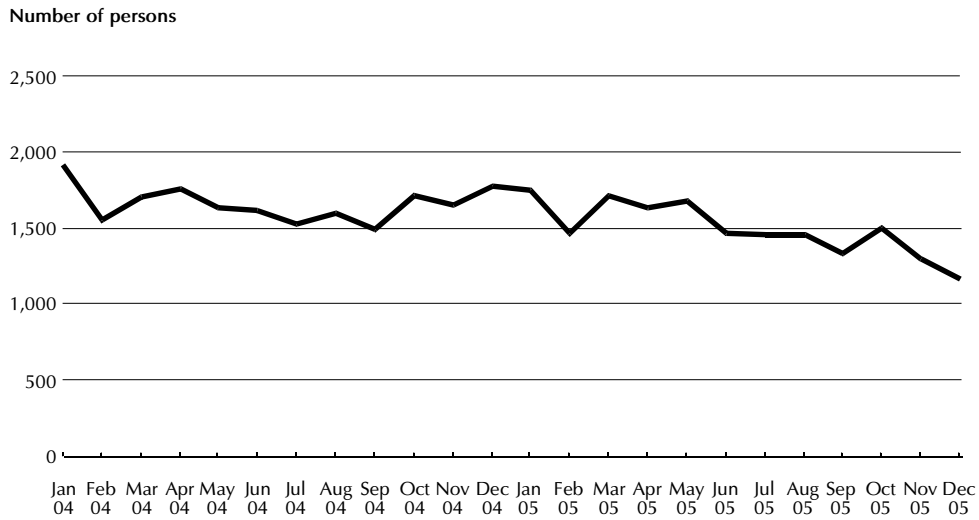


* Prior to July 2003, Bail Court Attendance Notices were known as Charges

No-Bail Court Attendance Notice*

Trend (Jan 2004 - Dec 2005): A statistically significant downward trend (down by 10.2%)

Figure 11: Persons issued with No-Bail Court Attendance Notice

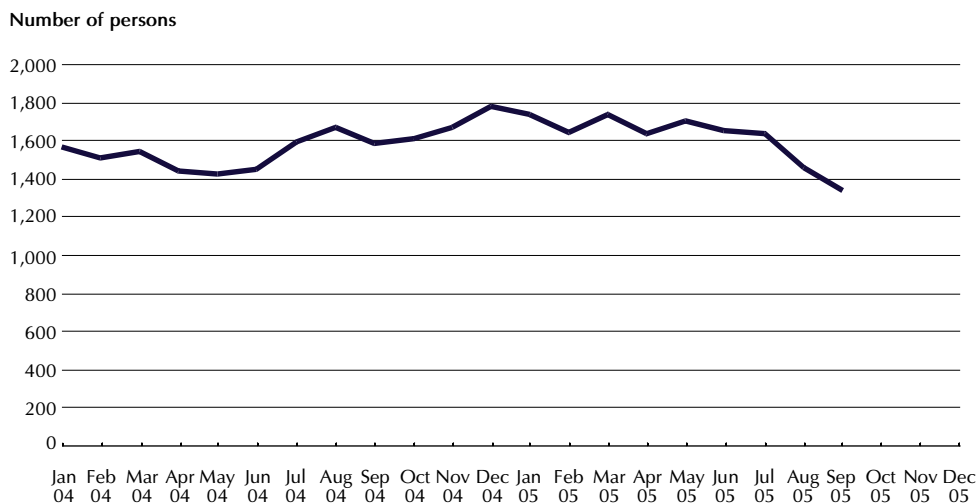


* Prior to July 2003, No-Bail Court Attendance Notices were known as Court Attendance Notices.

Future Court Attendance Notice**

Trend (Oct 2003 - Sep 2005): No statistically significant upward or downward trend.

Figure 12: Persons issued with Future Court Attendance Notice



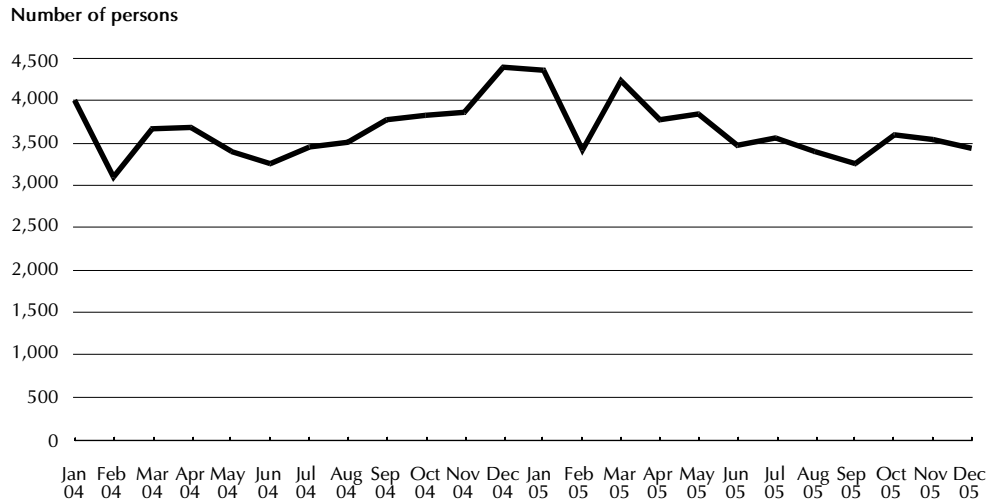
* Prior to July 2003, Future Court Attendance Notices were known as Summonses.

Due to the time lag between the incident being recorded and the Future CAN being issued comparable data for the last three months of 2005 was unavailable at the time of publication.

Field Court Attendance Notice

Trend (Jan 2004 - Dec 2005): No statistically significant upward or downward trend.

Figure 13: Persons issued with a Field Court Attendance Notice



NOTES

1. Australian Bureau of Statistics 2004, *Crime and Safety, New South Wales, April 2004*, Cat. No.4509.1, ABS, Sydney.
2. The trend test used was Kendall's rank-order correlation test (see for example, Conover, W.J., *Practical Non-Parametric Statistics*, 2nd edn, John Wiley and Sons, pp 256-260). A two tailed test was used to determine whether there had been an increasing or decreasing trend in the recorded numbers of criminal incidents over the most recent twenty-four month period covered in the report. Some month to month variations in the numbers could be due in part to seasonal factors. The test for trend is not sensitive to seasonal variations; it is sensitive only to a generally increasing or decreasing trend over the time period examined.
3. In the case of murder, there was no statistically significant trend in the monthly numbers of recorded victims.
4. For the rate calculations, population data were obtained from the Australian Bureau of Statistics publication: *Regional Population Growth Australia and New Zealand 2003-04*, Cat. No. 3218.0 (for 2003 and 2004 population estimates). As no population estimates were available for 2005 when this report was published, rates for 2005 were calculated using 2004 population estimates.

**MONTHLY TRENDS IN
RECORDED CRIMINAL INCIDENTS,
2003, 2004 AND 2005
NEW SOUTH WALES**

TABLE 1.1 MONTHLY TRENDS IN RECORDED CRIMINAL INCIDENTS, 2003, NEW SOUTH WALES:
TYPE OF OFFENCE

Type of offence	Recorded criminal incidents												Rate per 100,000 population	
	Jan	Feb	Mar	Apr	May	Jun	Jul	Aug	Sep	Oct	Nov	Dec		Total 2003
Homicide														
Murder*	4	14	7	8	8	6	4	9	10	9	9	4	92	1.4
Attempted murder	13	6	6	11	7	7	9	9	5	12	7	3	95	1.4
Murder accessory, conspiracy	0	0	1	0	0	1	2	0	0	1	0	2	7	0.1
Manslaughter*	1	1	1	0	1	2	0	1	1	0	0	1	9	0.1
Driving causing death [#]	13	25	32	23	23	18	22	30	29	19	31	22	287	4.3
Assault	6,883	6,509	6,823	5,553	5,748	5,687	5,273	5,435	5,840	5,820	6,149	6,699	72,419	1,083.8
Sexual offences														
Sexual assault	333	322	324	284	354	317	318	360	363	321	339	333	3,968	59.4
Indecent assault, act of indecency	348	302	382	323	375	326	258	317	303	280	311	298	3,823	57.2
Other sexual offences	158	134	146	118	111	115	128	143	136	139	143	128	1,599	23.9
Abduction and kidnapping	31	21	26	32	32	31	25	35	25	39	36	24	357	5.3
Robbery														
Robbery without a weapon [^]	502	513	618	611	649	526	529	408	487	484	522	421	6,270	93.8
Robbery with a firearm [^]	50	56	53	95	87	47	88	52	55	69	66	75	793	11.9
Robbery with a weapon not a firearm [^]	289	271	266	278	284	254	263	229	205	199	223	210	2,971	44.5
Blackmail and extortion	3	6	3	5	10	8	4	3	2	3	4	6	57	0.9
Harassment, threatening behaviour and private nuisance	1,559	1,554	1,543	1,333	1,487	1,550	1,547	1,500	1,480	1,539	1,440	1,586	18,118	271.1
Other offences against the person[^]	137	106	95	75	113	115	102	107	111	90	109	110	1,270	19.0

TABLE 1.1 MONTHLY TRENDS IN RECORDED CRIMINAL INCIDENTS, 2003, NEW SOUTH WALES:
TYPE OF OFFENCE - continued

Type of offence	Recorded criminal incidents												Rate per 100,000 population	
	Jan	Feb	Mar	Apr	May	Jun	Jul	Aug	Sep	Oct	Nov	Dec		Total 2003
Drug offences - continued														
Dealing, trafficking in cocaine	4	3	3	5	6	3	0	4	4	3	4	2	41	0.6
Dealing, trafficking in narcotics	61	59	34	23	55	32	65	58	52	25	46	35	545	8.2
Dealing, trafficking in cannabis	53	61	65	56	65	46	62	47	68	52	47	52	674	10.1
Dealing, trafficking in amphetamines	33	44	41	94	38	30	108	45	50	54	41	51	629	9.4
Dealing, trafficking in ecstasy	13	16	22	9	20	36	29	22	21	13	36	18	255	3.8
Dealing, trafficking in other drugs [^]	5	3	6	5	7	6	11	4	7	3	5	2	64	1.0
Cultivating cannabis	254	224	221	144	89	62	75	58	58	87	127	148	1,547	23.2
Manufacture drug	4	4	9	4	1	6	9	11	4	6	5	0	63	0.9
Importing drugs	4	3	3	4	10	2	3	2	4	3	2	6	46	0.7
Other drug offences [^]	320	230	262	251	274	266	284	235	253	194	269	274	3,112	46.6
Prohibited and regulated weapons offences[^]	903	809	883	782	813	788	622	603	613	880	736	774	9,206	137.8
Disorderly conduct														
Trespass	765	683	793	640	692	652	621	582	637	638	621	618	7,942	118.9
Offensive conduct	523	438	502	371	407	396	362	398	394	385	418	476	5,070	75.9
Offensive language	598	526	546	403	426	420	386	423	422	447	422	500	5,519	82.6
Criminal intent	188	141	176	174	179	176	153	165	152	161	134	136	1,935	29.0
Betting and gaming offences	3	6	40	22	31	5	6	14	8	8	11	13	167	2.5
Liquor offences	1,189	1,186	1,288	1,115	1,171	1,024	1,052	913	1,046	906	1,096	1,266	13,252	198.3
Pornography offences	5	7	2	7	8	6	22	12	4	11	5	4	93	1.4
Prostitution offences[^]	103	36	24	20	18	39	17	11	9	19	14	25	335	5.0

Against justice procedures															
Escape custody	44	21	29	17	29	19	30	17	28	24	19	22	299	4.5	
Breach Apprehended Violence Order	1,179	1,164	1,182	943	1,061	1,073	958	988	978	1,038	1,043	1,119	12,726	190.5	
Breach bail conditions	952	754	784	816	796	736	665	700	665	689	745	819	9,121	136.5	
Fail to appear	130	162	160	157	139	153	143	53	65	65	46	53	1,326	19.8	
Resist or hinder officer	684	577	670	498	528	469	421	479	463	473	465	536	6,263	93.7	
Other offences against justice procedures [^]	198	149	153	163	156	156	106	60	67	81	66	62	1,417	21.2	
Driving offences[#]															
Drive under influence of alcohol or drugs	92	84	97	86	95	113	94	125	96	118	116	113	1,229	18.4	
Dangerous or negligent driving	2,259	2,557	2,668	2,772	2,912	2,738	2,583	2,659	2,387	2,657	2,711	2,642	31,545	472.1	
Driving licence cancelled or suspended	1,574	1,186	1,357	1,340	1,280	1,241	1,006	1,048	1,058	1,075	1,117	1,317	14,599	218.5	
Driving without a licence	2,780	2,058	2,334	2,473	2,205	2,327	2,279	2,536	2,426	2,628	2,484	2,844	29,374	439.6	
Other driving licence offences	4,944	3,545	4,246	4,961	3,914	4,523	4,111	4,209	4,291	4,323	4,381	5,451	52,899	791.7	
Registration offences	7,320	4,662	5,411	5,711	5,048	5,260	4,569	5,379	4,791	5,513	5,143	6,777	65,584	981.5	
Roadworthiness offences	143	101	113	121	107	92	69	101	92	89	85	100	1,213	18.2	
Exceeding the prescribed content of alcohol limit	2,365	1,913	2,613	2,436	2,233	2,284	1,976	2,330	2,009	2,147	2,472	2,551	27,329	409	
Exceeding legal speed limit	24,726	15,094	19,541	25,650	20,148	23,041	25,161	25,004	24,559	22,297	18,631	24,919	268,771	4,022.3	
Parking offences	125	100	222	154	198	123	99	117	101	80	77	95	1,491	22.3	
Other regulatory driving offences	16,820	13,582	15,644	15,410	14,445	14,125	14,158	14,264	14,203	14,336	13,887	16,394	177,268	2,652.9	
Transport regulatory offences	2,966	3,670	4,303	4,444	4,709	3,681	3,310	3,045	3,379	3,598	3,250	3,469	43,824	655.8	
Other offences[^]	2,012	1,715	1,773	1,616	1,685	1,552	1,833	1,749	1,696	1,670	1,567	1,895	20,763	310.7	

[^] The composition of this offence category changed significantly for the 2004 report; statistics published from 2004 onwards for this offence cannot be compared to those published in reports prior to 2004. (See Explanatory Notes, page vii).

[#] From 2003 driving offence data shows the number of legal actions commenced rather than the number of recorded criminal incidents. Comparable data is not available for years prior to 2003. (See Explanatory Notes, page vi).

TABLE 1.2 MONTHLY TRENDS IN RECORDED CRIMINAL INCIDENTS, 2004, NEW SOUTH WALES:
TYPE OF OFFENCE

Type of offence	Recorded criminal incidents												Rate per 100,000 population	
	Jan	Feb	Mar	Apr	May	Jun	Jul	Aug	Sep	Oct	Nov	Dec		Total 2004
Homicide														
Murder*	7	4	4	8	5	5	12	7	4	1	2	10	69	1.0
Attempted murder	4	4	6	5	10	4	9	6	4	4	4	6	66	1.0
Murder accessory, conspiracy	0	0	0	0	0	0	0	2	1	0	1	0	4	0.1
Manslaughter*	1	0	0	0	0	0	0	0	2	2	0	2	7	0.1
Driving causing death#	27	15	35	12	14	27	15	26	9	18	16	24	238	3.5
Assault	6,346	6,143	6,177	5,358	5,348	5,274	5,440	5,611	5,506	6,081	6,175	6,663	70,122	1,041.7
Sexual offences														
Sexual assault	375	374	396	318	324	346	344	373	303	356	409	373	4,291	63.7
Indecent assault, act of indecency	295	325	341	263	280	236	301	304	313	290	339	328	3,615	53.7
Other sexual offences	151	156	166	144	123	138	128	163	157	184	157	144	1,811	26.9
Abduction and kidnapping	38	39	34	31	36	39	37	30	38	33	35	24	414	6.2
Robbery														
Robbery without a weapon [^]	481	419	511	452	451	363	365	393	373	392	384	389	4,973	73.9
Robbery with a firearm [^]	59	80	69	45	98	81	72	25	39	31	38	29	666	9.9
Robbery with a weapon not a firearm [^]	189	179	242	282	268	220	229	207	186	203	193	211	2,609	38.8
Blackmail and extortion	1	4	6	10	3	2	4	8	6	4	7	10	65	1.0
Harassment, threatening behaviour and private nuisance	1,749	1,491	1,568	1,361	1,499	1,658	1,620	1,576	1,629	1,613	1,796	1,728	19,288	286.5
Other offences against the person[^]	116	105	117	106	106	110	121	119	105	152	140	117	1,414	21.0

TABLE 1.2 MONTHLY TRENDS IN RECORDED CRIMINAL INCIDENTS, 2004, NEW SOUTH WALES:
TYPE OF OFFENCE - continued

Type of offence	Recorded criminal incidents												Rate per 100,000 population	
	Jan	Feb	Mar	Apr	May	Jun	Jul	Aug	Sep	Oct	Nov	Dec		Total 2004
Drug offences - continued														
Dealing, trafficking in cocaine	5	2	2	1	7	15	8	5	9	16	11	7	88	1.3
Dealing, trafficking in narcotics	42	34	27	37	40	52	94	47	47	31	41	13	505	7.5
Dealing, trafficking in cannabis	43	59	76	63	74	75	47	49	42	47	42	71	688	10.2
Dealing, trafficking in amphetamines	35	42	47	21	62	55	36	45	47	33	46	67	536	8.0
Dealing, trafficking in ecstasy	39	49	30	19	15	20	13	15	12	24	22	16	274	4.1
Dealing, trafficking in other drugs [^]	6	6	11	9	4	5	6	7	7	9	7	4	81	1.2
Cultivating cannabis	212	252	221	114	77	65	52	61	54	105	122	132	1,467	21.8
Manufacture drug	4	3	3	5	7	2	11	2	7	3	3	8	58	0.9
Importing drugs	5	1	3	11	4	6	1	5	3	3	1	7	50	0.7
Other drug offences [^]	280	217	269	256	281	248	219	231	228	219	206	239	2,893	43.0
Prohibited and regulated weapons offences[^]	1,046	1,063	1,023	856	887	887	542	638	619	653	681	737	9,632	143.1
Disorderly conduct														
Trespass	696	621	677	662	646	593	585	648	654	654	696	705	7,837	116.4
Offensive conduct	491	427	424	408	370	376	375	433	396	451	451	599	5,201	77.3
Offensive language	512	419	460	390	356	364	396	425	392	444	469	572	5,199	77.2
Criminal intent	151	132	163	144	135	124	111	154	135	115	130	142	1,636	24.3
Betting and gaming offences	8	4	5	7	13	33	28	50	11	13	16	32	220	3.3
Liquor offences	1,207	800	932	1,038	826	972	885	958	919	1,194	1,146	1,744	12,621	187.5
Pornography offences	16	8	7	5	9	6	11	6	48	47	16	12	191	2.8
Prostitution offences[^]	8	30	17	30	16	12	24	24	30	14	30	35	270	4.0

Against justice procedures	19	16	27	21	21	27	20	22	22	19	31	20	265	3.9
Escape custody														
Breach Apprehended Violence Order	1,194	1,077	1,060	959	926	921	943	992	979	1,123	1,000	1,102	12,276	182.4
Breach bail conditions	948	819	826	829	842	802	748	857	888	893	932	998	10,382	154.2
Fail to appear	48	46	42	47	43	48	45	31	38	40	39	39	506	7.5
Resist or hinder officer	576	544	543	453	443	423	489	472	400	498	550	683	6,074	90.2
Other offences against justice procedures [^]	68	76	74	74	76	48	75	72	52	56	63	45	779	11.6
Driving offences[#]														
Drive under influence of alcohol or drugs	113	100	87	122	90	99	109	115	92	107	104	123	1,261	18.7
Dangerous or negligent driving	2,432	2,472	2,545	2,549	2,446	2,378	2,644	2,458	2,376	2,555	2,450	2,615	29,920	444.5
Driving licence cancelled or suspended	1,280	1,074	1,170	1,337	1,296	1,329	1,275	1,405	1,464	1,499	1,448	1,621	16,198	240.6
Driving without a licence	2,762	2,003	2,371	2,839	2,346	2,458	2,594	2,671	2,761	2,739	2,797	3,322	31,663	470.4
Other driving licence offences	5,361	3,546	4,272	5,180	3,978	4,182	4,100	4,447	4,562	4,553	4,610	5,483	54,274	806.3
Registration offences	6,058	3,923	4,620	5,535	4,509	4,791	4,793	5,003	5,245	5,609	5,692	7,486	63,264	939.8
Roadworthiness offences	91	76	70	128	64	85	76	75	76	82	65	90	978	14.5
Exceeding the prescribed content of alcohol limit	2,518	1,814	2,301	2,293	1,978	1,933	2,004	2,063	2,192	2,296	2,339	2,444	26,175	388.9
Exceeding legal speed limit	23,978	15,556	16,997	24,612	18,889	18,471	19,819	20,619	19,266	18,384	15,758	21,569	233,918	3,475.1
Parking offences	104	84	94	89	86	135	110	73	130	139	104	126	1,274	18.9
Other regulatory driving offences	15,681	12,014	13,825	15,164	14,124	14,086	13,724	14,529	14,502	14,200	14,106	16,890	172,845	2,567.8
Transport regulatory offences	3,414	3,339	3,635	3,604	4,173	4,082	3,927	3,692	3,275	3,217	2,938	3,237	42,533	631.9
Other offences[^]	1,978	1,542	1,515	1,621	1,480	1,425	1,520	1,470	1,340	1,512	1,538	1,646	18,587	276.1

[^] The composition of this offence category changed significantly for the 2004 report; statistics published from 2004 onwards for this offence cannot be compared to those published in reports prior to 2004. (See Explanatory Notes, page vii).

[#] From 2003 driving offence data shows the number of legal actions commenced rather than the number of recorded criminal incidents. Comparable data is not available for years prior to 2003. (See Explanatory Notes, page vi).

TABLE 1.3 MONTHLY TRENDS IN RECORDED CRIMINAL INCIDENTS, 2005, NEW SOUTH WALES:
TYPE OF OFFENCE

Type of offence	Recorded criminal incidents												Rate per 100,000 population	
	Jan	Feb	Mar	Apr	May	Jun	Jul	Aug	Sep	Oct	Nov	Dec		Total 2005
Homicide														
Murder*	10	9	6	9	3	7	9	3	4	8	8	3	79	1.2
Attempted murder	2	1	6	5	5	5	2	4	1	8	7	4	50	0.7
Murder accessory, conspiracy	2	0	0	0	1	2	0	1	1	5	0	0	12	0.2
Manslaughter*	2	0	0	0	0	0	0	0	1	0	0	0	3	0.0
Driving causing death*	12	10	12	18	21	16	13	16	15	13	5	7	158	2.3
Assault	6,667	5,905	6,440	5,702	5,550	5,312	5,633	5,473	5,537	5,987	6,021	6,270	70,497	1,047.3
Sexual offences														
Sexual assault	313	336	408	302	388	346	277	384	297	299	372	294	4,016	59.7
Indecent assault, act of indecency	286	327	334	240	279	288	258	302	298	310	289	245	3,456	51.3
Other sexual offences	200	219	207	161	167	144	116	140	163	179	145	152	1,993	29.6
Abduction and kidnapping	31	26	29	30	32	25	26	42	31	41	47	33	393	5.8
Robbery														
Robbery without a weapon [^]	397	350	497	453	364	379	375	411	450	491	484	458	5,109	75.9
Robbery with a firearm [^]	31	28	59	51	39	24	48	45	48	37	44	34	488	7.2
Robbery with a weapon not a firearm [^]	189	186	243	237	206	259	208	211	263	220	213	221	2,656	39.5
Blackmail and extortion	4	9	6	5	3	2	1	6	14	2	5	3	60	0.9
Harassment, threatening behaviour and private nuisance	1,944	1,742	1,967	1,820	1,706	1,602	1,657	1,858	1,886	1,876	1,844	1,897	21,799	323.8
Other offences against the person[^]	143	135	141	125	120	125	113	131	104	136	109	121	1,503	22.3

Theft														
Break and enter - dwelling	4,559	4,126	4,507	4,129	4,245	3,894	4,108	3,914	3,914	4,240	4,041	4,017	49,694	738.3
Break and enter - non-dwelling	2,540	2,351	2,634	2,191	2,312	2,210	2,270	2,175	2,130	2,226	2,269	2,184	27,492	408.4
Receiving or handling stolen goods	661	567	618	542	556	498	525	523	508	546	411	405	6,360	94.5
Motor vehicle theft	2,665	2,356	2,646	2,534	2,580	2,397	2,473	2,221	2,264	2,349	2,371	2,247	29,103	432.4
Steal from motor vehicle	4,528	4,451	5,306	4,609	4,654	4,431	4,560	4,340	4,419	4,391	4,579	4,147	54,415	808.4
Steal from retail store	1,440	1,421	1,598	1,591	1,662	1,610	1,691	1,537	1,502	1,400	1,526	1,327	18,305	271.9
Steal from dwelling	2,436	2,044	2,074	2,139	2,069	1,870	1,997	1,935	2,048	2,260	2,056	2,078	25,006	371.5
Steal from person	1,275	952	1,144	951	971	1,017	978	992	1,036	1,117	1,016	1,096	12,545	186.4
Stock theft	62	58	51	51	46	59	46	67	58	52	57	42	649	9.6
Fraud	2,889	2,669	2,628	2,619	2,999	2,779	3,039	2,882	3,219	2,838	2,468	2,088	33,117	492.0
Other theft	4,112	3,608	3,948	3,806	3,763	3,628	3,471	3,395	3,460	3,521	3,487	3,633	43,832	651.2
Arson	572	456	525	502	525	478	551	558	514	610	576	576	6,443	95.7
Malicious damage to property	8,667	7,909	8,817	8,520	7,873	7,872	8,814	8,469	8,726	9,411	8,682	9,056	102,816	1,527.4
Drug offences														
Possession and/or use of cocaine	26	25	25	14	28	19	22	17	9	13	18	15	231	3.4
Possession and/or use of narcotics	89	85	84	75	77	64	85	63	75	61	56	35	849	12.6
Possession and/or use of cannabis	1,135	844	892	948	1,160	986	1,032	1,006	959	960	827	774	11,523	171.2
Possession and/or use of amphetamines	206	141	153	147	189	174	173	182	156	171	170	173	2,035	30.2
Possession and/or use of ecstasy	121	55	46	55	44	61	73	82	75	50	39	63	764	11.3
Possession and/or use of other drugs [^]	90	70	81	90	98	87	82	86	76	68	75	83	986	14.6
... continued over page														

* For murder and manslaughter only, the data are counts of recorded victims, not criminal incidents. (see Explanatory Notes, page vi).

From 2003 driving offence data shows the number of legal actions commenced rather than the number of recorded criminal incidents. Comparable data is not available for years prior to 2003. (See Explanatory Notes, page vi).

^ The composition of this offence category changed significantly for the 2004 report; statistics published from 2004 onwards for this offence cannot be compared to those published in reports prior to 2004. (See Explanatory Notes, page vii).

TABLE 1.3 MONTHLY TRENDS IN RECORDED CRIMINAL INCIDENTS, 2005, NEW SOUTH WALES:
TYPE OF OFFENCE - continued

Type of offence	Recorded criminal incidents												Rate per 100,000 population	
	Jan	Feb	Mar	Apr	May	Jun	Jul	Aug	Sep	Oct	Nov	Dec		Total 2005 No.
Drug offences - continued														
Dealing, trafficking in cocaine	11	15	15	5	18	3	8	7	8	0	4	0	94	1.4
Dealing, trafficking in narcotics	32	58	46	27	24	26	32	31	28	24	25	17	370	5.5
Dealing, trafficking in cannabis	31	38	45	64	66	62	79	67	22	43	40	35	592	8.8
Dealing, trafficking in amphetamines	39	21	32	49	47	105	58	43	126	57	40	62	679	10.1
Dealing, trafficking in ecstasy	52	14	24	24	26	64	58	68	27	17	11	27	412	6.1
Dealing, trafficking in other drugs [^]	10	5	6	4	4	13	7	6	12	4	8	3	82	1.2
Cultivating cannabis	147	179	202	95	77	73	35	54	65	80	104	112	1,223	18.2
Manufacture drug	5	4	13	5	12	1	6	2	6	3	6	3	66	1.0
Importing drugs	1	9	4	1	6	1	5	2	3	2	1	5	40	0.6
Other drug offences [^]	257	206	217	247	228	206	237	250	189	229	236	181	2,683	39.9
Prohibited and regulated weapons offences[^]	730	676	606	613	598	629	602	685	622	703	614	677	7,755	115.2
Disorderly conduct														
Trespass	829	636	791	732	663	621	654	658	734	743	673	731	8,465	125.8
Offensive conduct	622	500	451	482	437	423	518	439	489	529	474	519	5,883	87.4
Offensive language	595	513	552	486	541	473	455	407	441	508	431	472	5,874	87.3
Criminal intent	159	132	154	129	148	118	125	111	124	150	117	125	1,592	23.7
Betting and gaming offences	8	11	6	18	9	9	19	12	6	7	2	15	122	1.8
Liquor offences	1,296	987	1,132	1,247	925	1,044	1,086	926	915	1,345	1,040	1,369	13,312	197.8
Pornography offences	10	9	19	6	8	6	6	11	14	9	9	3	110	1.6
Prostitution offences[^]	29	22	28	31	32	30	18	11	23	11	11	7	253	3.8

Against justice procedures	19	16	31	32	22	12	23	20	12	23	21	17	248	3.7
Escape custody														
Breach Apprehended Violence Order	1,079	1,030	1,054	962	957	902	969	958	909	974	941	943	11,678	173.5
Breach bail conditions	1,143	952	1,011	935	973	875	874	873	838	1,101	913	977	11,465	170.3
Fail to appear	56	79	61	42	53	51	45	50	64	37	54	33	625	9.3
Resist or hinder officer	656	552	523	532	508	507	518	452	468	596	511	523	6,346	94.3
Other offences against justice procedures [^]	56	81	73	65	73	39	49	45	31	57	43	29	641	9.5
Driving offences[#]														
Drive under influence of alcohol or drugs	124	94	92	114	99	78	85	91	73	70	48	43	1,011	15.0
Dangerous or negligent driving	2,405	2,277	2,546	2,342	2,435	2,692	2,310	2,163	2,285	2,140	2,126	1,740	27,461	408.0
Driving licence cancelled or suspended	1,516	1,189	1,435	1,265	1,313	1,268	1,305	1,366	1,172	1,291	1,251	1,200	15,571	231.3
Driving without a licence	2,985	2,198	2,839	2,534	2,541	2,559	2,387	2,421	2,313	2,617	2,432	2,532	30,358	451.0
Other driving licence offences	5,773	3,882	5,607	4,646	4,512	4,651	4,433	4,613	4,333	4,507	4,133	4,207	55,297	821.5
Registration offences	6,593	3,947	4,971	4,543	4,815	4,864	4,461	4,922	4,442	5,293	5,393	6,958	61,202	909.2
Roadworthiness offences	99	77	114	103	99	153	119	107	62	77	61	56	1,127	16.7
Exceeding the prescribed content of alcohol limit	2,442	1,879	2,747	2,336	2,518	2,139	2,115	1,994	1,965	2,329	2,231	1,980	26,675	396.3
Exceeding legal speed limit	20,870	15,328	19,249	17,777	17,134	17,984	18,015	19,200	17,664	17,792	13,833	17,443	212,289	3,153.8
Parking offences	150	118	84	79	136	128	178	154	137	99	95	125	1,483	22
Other regulatory driving offences	15,679	14,400	15,477	16,091	15,486	16,597	14,670	16,798	15,283	14,294	13,941	15,229	183,945	2,732.7
Transport regulatory offences	3,049	2,524	2,503	2,881	3,955	3,550	3,116	3,212	3,198	3,153	2,926	2,744	36,811	546.9
Other offences[^]	1,780	1,421	1,482	1,436	1,381	1,314	1,499	1,390	1,365	1,541	1,266	1,444	17,319	257.3

[^] The composition of this offence category changed significantly for the 2004 report; statistics published from 2004 onwards for this offence cannot be compared to those published in reports prior to 2004. (See Explanatory Notes, page vii).

[#] From 2003 driving offence data shows the number of legal actions commenced rather than the number of recorded criminal incidents. Comparable data is not available for years prior to 2003. (See Explanatory Notes, page vi).

**MONTHLY TRENDS IN
METHODS OF PROCEEDING
AGAINST ALLEGED OFFENDERS,
2003, 2004 AND 2005
NEW SOUTH WALES**

TABLE 2.1 MONTHLY TRENDS IN METHODS OF PROCEEDING AGAINST ALLEGED OFFENDERS, 2003
NEW SOUTH WALES: TYPE OF PROCESS

Type of process	Number of alleged offenders												2003 Total				
	Jan	Feb	Mar	Apr	May	Jun	Jul	Aug	Sep	Oct	Nov	Dec					
Proceeded against to court																	
Bail Court Attendance Notice	5,858	5,228	5,664	4,847	5,111	4,688	4,326	4,384	4,442	4,448	4,726	5,058	58,780				
No-Bail Court Attendance Notice	1,995	1,744	2,080	1,989	1,925	1,842	1,769	1,896	1,776	1,842	1,785	1,884	22,527				
Future Court Attendance Notice	1,539	1,359	1,551	1,416	1,438	1,389	1,538	1,549	1,514	1,462	1,529	1,558	17,842				
Field Court Attendance Notice	3,523	2,760	3,378	3,050	2,996	2,997	2,650	3,041	2,930	2,975	3,293	3,946	37,539				
All proceedings to court	12,915	11,091	12,673	11,302	11,470	10,916	10,283	10,870	10,662	10,727	11,333	12,446	136,688				
Proceeded against other than to court																	
Youth Conference	74	82	70	78	78	108	97	78	85	69	84	82	985				
Caution Young Offenders Act	712	644	914	810	824	864	774	837	840	832	792	728	9,571				
Cannabis/other drug caution	254	188	213	206	212	286	273	287	217	250	215	253	2,854				
Infringement Notice/ Public Safety Infringement Notice	50,830	36,750	44,126	50,310	43,153	45,692	46,734	47,378	46,797	45,361	40,818	50,576	548,525				
Warning*	4,316	3,809	4,177	4,208	4,095	3,668	3,728	3,555	3,819	3,814	3,743	4,162	47,094				
All proceedings other than to court	56,186	41,473	49,500	55,612	48,362	50,618	51,606	52,135	51,758	50,326	45,652	55,801	609,029				
All proceedings	69,101	52,564	62,173	66,914	59,832	61,534	61,889	63,005	62,420	61,053	56,985	68,247	745,717				
Not proceeded against**	5,923	5,403	5,743	5,082	5,178	5,149	5,355	5,172	5,539	5,428	5,577	5,832	65,381				

* This includes warnings issued to both juveniles and adults.

** Includes person deceased, under 10 years of age, diplomatic immunity, mentally incapable of forming criminal intent, DPP or victim refuses to prosecute and proceeding delayed pending further advice.

TABLE 2.2 MONTHLY TRENDS IN METHODS OF PROCEEDING AGAINST ALLEGED OFFENDERS, 2004
NEW SOUTH WALES: TYPE OF PROCESS

Type of process	Number of alleged offenders												
	Jan	Feb	Mar	Apr	May	Jun	Jul	Aug	Sep	Oct	Nov	Dec	2004 Total
Proceeded against to court													
Bail Court Attendance Notice	5,224	4,613	4,846	4,591	4,467	4,297	4,330	4,539	4,477	4,797	4,815	5,180	56,176
No-Bail Court Attendance Notice	1,915	1,554	1,710	1,762	1,641	1,616	1,532	1,604	1,498	1,719	1,659	1,780	19,990
Future Court Attendance Notice	1,567	1,506	1,543	1,438	1,424	1,450	1,593	1,668	1,588	1,613	1,671	1,779	18,840
Field Court Attendance Notice	4,007	3,100	3,678	3,690	3,413	3,256	3,463	3,515	3,779	3,837	3,874	4,403	44,015
All proceedings to court	12,713	10,773	11,777	11,481	10,945	10,619	10,918	11,326	11,342	11,966	12,019	13,142	139,021
Proceeded against other than to court													
Youth Conference	79	73	95	87	72	67	57	75	85	56	73	66	885
Caution Young Offenders Act	746	621	779	667	777	726	778	886	795	758	799	785	9,117
Cannabis/other drug caution	365	232	289	259	262	333	247	218	271	268	234	242	3,220
Infringement Notice/ Public Safety Infringement Notice	48,809	34,334	38,733	48,301	40,326	40,168	40,925	42,435	41,389	40,477	37,587	47,842	501,326
Warning*	4,064	3,713	3,927	4,088	4,146	4,332	3,968	3,979	3,801	3,851	3,922	4,793	48,584
All proceedings other than to court	54,063	38,973	43,823	53,402	45,583	45,626	45,975	47,593	46,341	45,410	42,615	53,728	563,132
All proceedings	66,776	49,746	55,600	64,883	56,528	56,245	56,893	58,919	57,683	57,376	54,634	66,870	702,153
Not proceeded against**	5,976	5,669	5,859	5,499	5,670	5,699	5,673	5,810	5,563	5,915	6,339	6,692	70,364

* This includes warnings issued to both juveniles and adults.

** Includes person deceased, under 10 years of age, diplomatic immunity, mentally incapable of forming criminal intent, DPP or victim refuses to prosecute and proceeding delayed pending further advice.

TABLE 2.3 MONTHLY TRENDS IN METHODS OF PROCEEDING AGAINST ALLEGED OFFENDERS, 2005
NEW SOUTH WALES: TYPE OF PROCESS

Type of process	Number of alleged offenders												
	Jan	Feb	Mar	Apr	May	Jun	Jul	Aug	Sep	Oct	Nov	Dec	2005 Total
Proceeded against to court													
Bail Court Attendance Notice	5,315	4,617	4,954	4,639	4,729	4,260	4,390	4,543	4,386	4,889	4,232	4,341	55,295
No-Bail Court Attendance Notice	1,752	1,472	1,713	1,640	1,681	1,466	1,459	1,460	1,334	1,502	1,300	1,169	17,948
Future Court Attendance Notice [#]	1,734	1,645	1,738	1,635	1,705	1,653	1,633	1,461	1,343	1,255	1,124	1,083	18,009
Field Court Attendance Notice	4,367	3,419	4,238	3,769	3,852	3,469	3,555	3,400	3,256	3,603	3,545	3,431	43,904
All proceedings to court	13,168	11,153	12,643	11,683	11,967	10,848	11,037	10,864	10,319	11,249	10,201	10,024	135,156
Proceeded against other than to court													
Youth Conference	84	110	59	50	141	74	68	55	68	73	71	36	889
Caution Young Offenders Act	678	675	801	778	791	710	769	710	827	747	658	511	8,655
Cannabis/other drug caution	305	153	178	240	319	287	275	235	242	242	192	197	2,865
Infringement Notice/ Public Safety Infringement Notice	45,648	36,240	43,197	41,369	41,319	43,312	40,175	43,849	41,056	40,092	35,422	40,842	492,521
Warning*	4,397	3,301	3,547	3,875	3,874	3,629	3,768	3,587	3,702	4,269	3,742	3,951	45,642
All proceedings other than to court	51,112	40,479	47,782	46,312	46,444	48,012	45,055	48,436	45,895	45,423	40,085	45,537	550,572
All proceedings	64,280	51,632	60,425	57,995	58,411	58,860	56,092	59,300	56,214	56,672	50,286	55,561	685,728
Not proceeded against**	6,857	6,144	6,596	5,967	6,104	5,506	5,835	5,714	5,806	5,987	5,499	5,610	71,625

[#] These data show the number of Future CANS issued for criminal incidents recorded in 2005. Due to the time lag between the incident being recorded and the Future CANS being issued, data for the last half of 2005 are low.

* This includes warnings issued to both juveniles and adults.

** Includes person deceased, under 10 years of age, diplomatic immunity, mentally incapable of forming criminal intent, DPP or victim refuses to prosecute and proceeding delayed pending further advice.

**CLEARED CRIMINAL INCIDENTS
FOR SELECTED OFFENCES,
JANUARY 2003 TO SEPTEMBER 2005,
NEW SOUTH WALES**

TABLE 3.1 CLEARED CRIMINAL INCIDENTS, SELECTED OFFENCES
JANUARY 2003 TO DECEMBER 2003, NEW SOUTH WALES: TYPE OF OFFENCE

Type of offence	Recorded criminal incidents					
	Total number recorded	Cleared within 30 days of reporting		Cleared within 90 days of reporting		% proceedings commenced within 90 days
		Total number cleared#	Proceedings commenced within 30 days##	% proceedings commenced within 30 days	Total number cleared#	Proceedings commenced within 90 days##
Murder*	92	50	43	46.7	52	46
Assault	72,419	42,291	23,575	32.6	45,630	25,794
Sexual assault	3,968	695	306	7.7	913	436
Indecent assault, act of indecency	3,823	915	456	11.9	1,237	657
Other sexual offences	1,599	457	294	18.4	511	338
Abduction and kidnapping	357	100	76	21.3	111	83
Robbery without a weapon^	6,270	676	533	8.5	805	635
Robbery with a firearm^	793	74	69	8.7	101	93
Robbery with a weapon not a firearm^	2,971	364	323	10.9	437	383
Harassment, threatening behaviour and private nuisance	18,118	7,943	2,050	11.3	8,436	2,261
Break and enter - dwelling	62,327	2,324	1,691	2.7	3,056	2,189
Break and enter - non-dwelling	36,374	1,538	1,245	3.4	1,922	1,530
Motor vehicle theft	34,898	1,625	1,332	3.8	1,969	1,581
Steal from motor vehicle	65,448	1,598	1,209	1.8	1,870	1,408
Steal from retail store	22,477	12,925	11,055	49.2	13,317	11,399
Steal from dwelling	29,339	2,089	883	3.0	2,424	1,048
Steal from person	18,757	735	406	2.2	830	468
Stock theft	955	47	19	2.0	65	26
Fraud	30,809	4,561	3,356	10.9	5,902	4,393
Arson	5,448	282	152	2.8	321	178
Malicious damage to property	94,819	15,254	8,673	9.1	16,512	9,448

* Total number cleared includes both incidents where proceedings were commenced and those where no proceedings were commenced.

This includes incidents where a person was proceeded against to court and proceeded against other than to court.

* Victims for whom incident was cleared.

^ The composition of robbery offences changed significantly for the 2004 report. For robbery offences, reports from 2004 onwards cannot be compared with reports prior to 2004. (See Explanatory Notes, page vii).

TABLE 3.2
CLEARED CRIMINAL INCIDENTS, SELECTED OFFENCES
JANUARY 2004 TO DECEMBER 2004, NEW SOUTH WALES: TYPE OF OFFENCE

Type of offence	Recorded criminal incidents					
	Total number recorded	Cleared within 30 days of reporting		Cleared within 90 days of reporting		% proceedings commenced within 90 days
		Total number cleared#	Proceedings commenced within 30 days##	% proceedings commenced within 30 days	Total number cleared#	Proceedings commenced within 90 days##
Murder*	69	45	37	53.6	47	39
Assault	70,122	41,930	23,236	33.1	45,197	25,465
Sexual assault	4,291	737	364	8.5	955	502
Indecent assault, act of indecency	3,615	850	443	12.3	1,097	587
Other sexual offences	1,811	490	274	15.1	536	305
Abduction and kidnapping	414	119	89	21.5	141	104
Robbery without a weapon^	4,973	554	424	8.5	646	491
Robbery with a firearm^	666	48	39	5.9	64	56
Robbery with a weapon not a firearm^	2,609	350	315	12.1	440	387
Harassment, threatening behaviour and private nuisance	19,288	9,087	2,391	12.4	9,673	2,662
Break and enter - dwelling	55,853	2,366	1,673	3.0	2,959	2,100
Break and enter - non-dwelling	29,833	1,263	1,021	3.4	1,603	1,273
Motor vehicle theft	33,234	1,539	1,261	3.8	1,846	1,477
Steal from motor vehicle	59,827	1,325	1,029	1.7	1,548	1,193
Steal from retail store	18,816	11,020	9,284	49.3	11,340	9,609
Steal from dwelling	26,421	2,094	816	3.1	2,402	968
Steal from person	14,338	555	302	2.1	659	353
Stock theft	851	29	4	0.5	66	26
Fraud	32,383	4,252	2,892	8.9	5,738	4,101
Arson	6,226	315	190	3.1	347	214
Malicious damage to property	95,123	15,920	9,034	9.5	17,278	9,936

* Total number cleared includes both incidents where proceedings were commenced and those where no proceedings were commenced.

** This includes incidents where a person was proceeded against to court and proceeded against other than to court.

* Victims for whom incident was cleared.

^ The composition of robbery offences changed significantly for the 2004 report. For robbery offences, reports from 2004 onwards cannot be compared with reports prior to 2004. (See Explanatory Notes, page vii).

TABLE 3.3 CLEARED CRIMINAL INCIDENTS, SELECTED OFFENCES
JANUARY 2005 TO SEPTEMBER 2005, NEW SOUTH WALES: TYPE OF OFFENCE

Type of offence	Recorded criminal incidents					
	Total number recorded	Cleared within 30 days of reporting		Cleared within 90 days of reporting		% proceedings commenced within 90 days
		Total number cleared#	Proceedings commenced within 30 days##	% proceedings commenced within 30 days	Total number cleared#	Proceedings commenced within 90 days##
Murder*	60	39	32	53.3	45	38
Assault	52,219	31,077	17,484	33.5	33,484	19,254
Sexual assault	3,051	511	247	8.1	682	373
Indecent assault, act of indecency	2,612	549	288	11.0	745	432
Other sexual offences	1,517	377	203	13.4	418	232
Abduction and kidnapping	272	76	55	20.2	91	62
Robbery without a weapon^	3,676	432	334	9.1	494	389
Robbery with a firearm^	373	32	30	8.0	38	34
Robbery with a weapon not a firearm^	2,002	270	238	11.9	345	302
Harassment, threatening behaviour and private nuisance	16,182	7,912	2,224	13.7	8,399	2,468
Break and enter - dwelling	37,396	1,701	1,226	3.3	2,150	1,554
Break and enter - non-dwelling	20,813	922	754	3.6	1,147	932
Motor vehicle theft	22,136	906	755	3.4	1,118	901
Steal from motor vehicle	41,298	941	722	1.7	1,094	824
Steal from retail store	14,052	7,500	6,292	44.8	7,863	6,625
Steal from dwelling	18,612	1,440	494	2.7	1,627	586
Steal from person	9,316	423	230	2.5	489	278
Stock theft	498	28	4	0.8	37	11
Fraud	25,723	3,303	2,172	8.4	4,324	3,058
Arson	4,681	229	134	2.9	256	151
Malicious damage to property	75,667	12,541	7,257	9.6	13,662	8,069

Total number cleared includes both incidents where proceedings were commenced and those where no proceedings were commenced.

This includes incidents where a person was proceeded against to court and proceeded against other than to court.

* Victims for whom incident was cleared.

^ The composition of robbery offences changed significantly for the 2004 report. For robbery offences, reports from 2004 onwards cannot be compared with reports prior to 2004. (See Explanatory Notes, page vii).

**RECORDED CRIME STATISTICS
IN NEW SOUTH WALES REGIONS
FOR SELECTED OFFENCES,
2003, 2004 AND 2005**

TABLE 4.1 RECORDED VICTIMS, 2003 TO 2005: STATISTICAL DIVISION**MURDER**

<i>Statistical Division where offence occurred</i>	<i>Recorded victims</i>					
	<i>2003</i>		<i>2004</i>		<i>2005</i>	
	<i>Number</i>	<i>Rate per 100,000 population</i>	<i>Number</i>	<i>Rate per 100,000 population</i>	<i>Number</i>	<i>Rate per 100,000 population</i>
Sydney	60	1.4	46	1.1	49	1.2
Inner Sydney	13	4.3	8	2.6	6	1.9
Eastern Suburbs	4	1.7	4	1.7	4	1.7
St George-Sutherland	7	1.6	4	0.9	5	1.1
Canterbury-Bankstown	9	2.9	5	1.6	1	0.3
Fairfield-Liverpool	4	1.1	8	2.2	7	2.0
Outer South Western Sydney	5	2.1	4	1.7	2	0.8
Inner Western Sydney	2	1.2	1	0.6	0	0.0
Central Western Sydney	1	0.3	2	0.7	6	2.0
Outer Western Sydney	4	1.3	1	0.3	6	1.9
Blacktown	5	1.8	6	2.2	3	1.1
Lower Northern Sydney	3	1.0	0	0.0	1	0.3
Central Northern Sydney	0	0.0	1	0.2	0	0.0
Northern Beaches	1	0.4	2	0.9	1	0.4
Gosford-Wyong	2	0.7	0	0.0	7	2.3
Hunter	6	1.0	4	0.7	13	2.2
Illawarra	2	0.5	1	0.2	2	0.5
Richmond-Tweed	1	0.5	2	0.9	2	0.9
Mid-North Coast	4	1.4	2	0.7	4	1.4
Northern	2	1.1	2	1.1	4	2.2
North Western	2	1.7	5	4.2	2	1.7
Central West	5	2.8	1	0.6	2	1.1
South Eastern	5	2.5	1	0.5	1	0.5
Murrumbidgee	3	2.0	0	0.0	0	0.0
Murray	0	0.0	4	3.5	0	0.0
Far West	1	4.2	0	0.0	0	0.0
New South Wales*	92	1.4	69	1.0	79	1.2

* The total for New South Wales includes 1 recorded victim in 2003 and 1 recorded victim in 2004 where the offence occurred in a custodial institution.

TABLE 4.2 RECORDED CRIMINAL INCIDENTS, 2003 TO 2005: STATISTICAL DIVISION**ASSAULT**

<i>Statistical Division where offence occurred</i>	<i>Recorded criminal incidents</i>					
	<i>2003</i>		<i>2004</i>		<i>2005</i>	
	<i>Number</i>	<i>Rate per 100,000 population</i>	<i>Number</i>	<i>Rate per 100,000 population</i>	<i>Number</i>	<i>Rate per 100,000 population</i>
Sydney	39,181	933.2	38,406	907.5	38,613	912.4
Inner Sydney	6,913	2,261.4	7,035	2,263.6	6,927	2,228.8
Eastern Suburbs	2,129	881.8	1,963	812.4	2,040	844.3
St George-Sutherland	2,542	580.5	2,529	574.2	2,557	580.5
Canterbury-Bankstown	2,161	697.4	2,018	650.0	2,054	661.6
Fairfield-Liverpool	3,525	996.2	3,312	931.5	3,345	940.8
Outer South Western Sydney	3,023	1,261.1	3,075	1,276.3	3,181	1,320.3
Inner Western Sydney	1,058	637.6	1,044	619.1	901	534.3
Central Western Sydney	3,135	1,043.4	3,015	988.3	3,129	1,025.6
Outer Western Sydney	3,293	1,031.7	3,162	993.8	3,244	1,019.6
Blacktown	3,969	1,453.4	3,875	1,391.2	3,903	1,401.3
Lower Northern Sydney	1,412	476.0	1,431	478.6	1,249	417.7
Central Northern Sydney	1,208	288.4	1,372	323.9	1,491	352.0
Northern Beaches	1,521	652.3	1,253	534.1	1,182	503.9
Gosford-Wyong	3,292	1,087.9	3,322	1,090.6	3,410	1,119.5
Hunter	7,010	1,169.2	6,755	1,117.9	7,215	1,194.1
Illawarra	4,415	1,082.7	4,259	1,038.4	4,278	1,043.0
Richmond-Tweed	2,598	1,173.0	2,524	1,127.4	2,530	1,130.1
Mid-North Coast	3,607	1,253.5	3,369	1,154.3	3,429	1,174.9
Northern	2,595	1,444.8	2,527	1,410.8	2,613	1,458.8
North Western	3,127	2,627.4	3,051	2,569.6	2,846	2,397.0
Central West	2,347	1,312.3	2,349	1,310.6	2,282	1,273.2
South Eastern	2,132	1,074.2	2,232	1,113.1	2,173	1,083.6
Murrumbidgee	2,178	1,424.5	1,907	1,245.2	1,930	1,260.3
Murray	1,309	1,145.9	1,237	1,079.0	1,294	1,128.7
Far West	894	3,744.0	622	2,626.0	538	2,271.4
New South Wales*	72,419	1,083.8	70,122	1,041.7	70,497	1,047.3

* The total for New South Wales includes 1,026 recorded incidents in 2003, 884 recorded incidents in 2004 and 756 recorded incidents in 2005 where the offence occurred in a custodial institution.

TABLE 4.2a RECORDED CRIMINAL INCIDENTS, 2003 TO 2005: STATISTICAL DIVISION**ASSAULT - DOMESTIC VIOLENCE RELATED[#]**

<i>Statistical Division where offence occurred</i>	<i>Recorded criminal incidents</i>					
	<i>2003</i>		<i>2004</i>		<i>2005</i>	
	<i>Number</i>	<i>Rate per 100,000 population</i>	<i>Number</i>	<i>Rate per 100,000 population</i>	<i>Number</i>	<i>Rate per 100,000 population</i>
Sydney	13,811	328.9	14,066	332.4	13,658	322.7
Inner Sydney	1,329	434.7	1,391	447.6	1,305	419.9
Eastern Suburbs	565	234.0	530	219.4	509	210.7
St George-Sutherland	902	206.0	1,013	230.0	984	223.4
Canterbury-Bankstown	860	277.5	793	255.4	859	276.7
Fairfield-Liverpool	1,498	423.3	1,513	425.5	1,456	409.5
Outer South Western Sydney	1,274	531.5	1,375	570.7	1,289	535.0
Inner Western Sydney	316	190.4	397	235.4	302	179.1
Central Western Sydney	1,194	397.4	1,126	369.1	1,173	384.5
Outer Western Sydney	1,251	391.9	1,269	398.9	1,320	414.9
Blacktown	1,848	676.7	1,847	663.1	1,751	628.7
Lower Northern Sydney	412	138.9	492	164.5	388	129.8
Central Northern Sydney	429	102.4	524	123.7	580	136.9
Northern Beaches	558	239.3	437	186.3	412	175.6
Gosford-Wyong	1,375	454.4	1,359	446.2	1,330	436.6
Hunter	2,745	457.8	2,542	420.7	2,937	486.1
Illawarra	1,828	448.3	1,745	425.5	1,699	414.2
Richmond-Tweed	940	424.4	919	410.5	867	387.3
Mid-North Coast	1,441	500.8	1,356	464.6	1,379	472.5
Northern	959	533.9	943	526.5	1,013	565.5
North Western	1,342	1,127.6	1,334	1,123.5	1,268	1,067.9
Central West	923	516.1	910	507.7	795	443.6
South Eastern	788	397.0	837	417.4	759	378.5
Murrumbidgee	880	575.6	815	532.2	713	465.6
Murray	508	444.7	456	397.8	486	423.9
Far West	488	2,043.7	291	1,228.6	261	1,101.9
New South Wales*	26,672	399.2	26,250	390.0	25,870	384.3

[#] This is a subset of total assaults that the police have identified as domestic violence related.

* The total for New South Wales includes 19 recorded incidents in 2003, 36 recorded incidents in 2004 and 35 recorded incidents in 2005 where the offence occurred in a custodial institution.

TABLE 4.3 RECORDED CRIMINAL INCIDENTS, 2003 TO 2005: STATISTICAL DIVISION**SEXUAL ASSAULT**

<i>Statistical Division where offence occurred</i>	<i>Recorded criminal incidents</i>					
	<i>2003</i>		<i>2004</i>		<i>2005</i>	
	<i>Number</i>	<i>Rate per 100,000 population</i>	<i>Number</i>	<i>Rate per 100,000 population</i>	<i>Number</i>	<i>Rate per 100,000 population</i>
Sydney	1,991	47.4	2,166	51.2	1,889	44.6
Inner Sydney	258	84.4	292	94.0	235	75.6
Eastern Suburbs	88	36.4	98	40.6	80	33.1
St George-Sutherland	125	28.5	155	35.2	135	30.6
Canterbury-Bankstown	121	39.0	172	55.4	100	32.2
Fairfield-Liverpool	217	61.3	180	50.6	161	45.3
Outer South Western Sydney	193	80.5	193	80.1	193	80.1
Inner Western Sydney	61	36.8	59	35.0	42	24.9
Central Western Sydney	143	47.6	132	43.3	144	47.2
Outer Western Sydney	178	55.8	229	72.0	199	62.5
Blacktown	185	67.7	189	67.9	178	63.9
Lower Northern Sydney	69	23.3	62	20.7	56	18.7
Central Northern Sydney	87	20.8	88	20.8	83	19.6
Northern Beaches	58	24.9	88	37.5	61	26.0
Gosford-Wyong	208	68.7	229	75.2	222	72.9
Hunter	447	74.6	436	72.2	441	73.0
Illawarra	272	66.7	289	70.5	253	61.7
Richmond-Tweed	184	83.1	194	86.7	225	100.5
Mid-North Coast	200	69.5	243	83.3	244	83.6
Northern	193	107.5	179	99.9	194	108.3
North Western	140	117.6	167	140.7	169	142.3
Central West	124	69.3	143	79.8	187	104.3
South Eastern	150	75.6	170	84.8	146	72.8
Murrumbidgee	134	87.6	154	100.6	115	75.1
Murray	75	65.7	84	73.3	104	90.7
Far West	35	146.6	33	139.3	34	143.5
New South Wales*	3,968	59.4	4,291	63.7	4,016	59.7

* The total for New South Wales includes 23 recorded incidents in 2003, 33 recorded incidents in 2004 and 15 recorded incidents in 2005 where the offence occurred in a custodial institution.

TABLE 4.4 RECORDED CRIMINAL INCIDENTS, 2003 TO 2005: STATISTICAL DIVISION

INDECENT ASSAULT, ACT OF INDECENCY, OTHER SEXUAL OFFENCES

<i>Statistical Division where offence occurred</i>	<i>Recorded criminal incidents</i>					
	<i>2003</i>		<i>2004</i>		<i>2005</i>	
	<i>Number</i>	<i>Rate per 100,000 population</i>	<i>Number</i>	<i>Rate per 100,000 population</i>	<i>Number</i>	<i>Rate per 100,000 population</i>
Sydney	2,968	70.7	2,936	69.4	2,814	66.5
Inner Sydney	333	108.9	421	135.5	370	119.1
Eastern Suburbs	147	60.9	176	72.8	158	65.4
St George-Sutherland	278	63.5	224	50.9	213	48.4
Canterbury-Bankstown	224	72.3	172	55.4	153	49.3
Fairfield-Liverpool	255	72.1	232	65.2	205	57.7
Outer South Western Sydney	225	93.9	225	93.4	231	95.9
Inner Western Sydney	98	59.1	106	62.9	84	49.8
Central Western Sydney	197	65.6	169	55.4	205	67.2
Outer Western Sydney	303	94.9	244	76.7	276	86.7
Blacktown	271	99.2	198	71.1	215	77.2
Lower Northern Sydney	124	41.8	139	46.5	125	41.8
Central Northern Sydney	138	32.9	186	43.9	157	37.1
Northern Beaches	107	45.9	132	56.3	140	59.7
Gosford-Wyong	268	88.6	312	102.4	282	92.6
Hunter	532	88.7	565	93.5	540	89.4
Illawarra	282	69.2	267	65.1	291	70.9
Richmond-Tweed	242	109.3	226	100.9	281	125.5
Mid-North Coast	307	106.7	318	109.0	302	103.5
Northern	227	126.4	219	122.3	223	124.5
North Western	211	177.3	197	165.9	238	200.4
Central West	174	97.3	186	103.8	209	116.6
South Eastern	136	68.5	197	98.2	185	92.3
Murrumbidgee	159	104.0	162	105.8	187	122.1
Murray	130	113.8	105	91.6	129	112.5
Far West	32	134.0	29	122.4	34	143.5
New South Wales*	5,422	81.1	5,426	80.6	5,449	81.0

* The total for New South Wales includes 22 recorded incidents in 2003, 19 recorded incidents in 2004 and 16 recorded incidents in 2005 where the offence occurred in a custodial institution.

TABLE 4.5 RECORDED CRIMINAL INCIDENTS, 2003 TO 2005: STATISTICAL DIVISION**ROBBERY WITHOUT A WEAPON[^]**

<i>Statistical Division where offence occurred</i>	<i>Recorded criminal incidents</i>					
	<i>2003</i>		<i>2004</i>		<i>2005</i>	
	<i>Number</i>	<i>Rate per 100,000 population</i>	<i>Number</i>	<i>Rate per 100,000 population</i>	<i>Number</i>	<i>Rate per 100,000 population</i>
Sydney	5,410	128.9	4,184	98.9	4,296	101.5
Inner Sydney	1,702	556.8	1,339	430.8	1,614	519.3
Eastern Suburbs	330	136.7	284	117.5	219	90.6
St George-Sutherland	375	85.6	247	56.1	253	57.4
Canterbury-Bankstown	431	139.1	323	104.0	394	126.9
Fairfield-Liverpool	401	113.3	346	97.3	300	84.4
Outer South Western Sydney	209	87.2	161	66.8	205	85.1
Inner Western Sydney	335	201.9	227	134.6	182	107.9
Central Western Sydney	586	195.0	411	134.7	353	115.7
Outer Western Sydney	218	68.3	213	66.9	154	48.4
Blacktown	323	118.3	243	87.2	244	87.6
Lower Northern Sydney	203	68.4	136	45.5	103	34.4
Central Northern Sydney	104	24.8	93	22.0	106	25.0
Northern Beaches	99	42.5	71	30.3	70	29.8
Gosford-Wyong	94	31.1	90	29.5	99	32.5
Hunter	291	48.5	222	36.7	261	43.2
Illawarra	145	35.6	159	38.8	169	41.2
Richmond-Tweed	55	24.8	66	29.5	70	31.3
Mid-North Coast	79	27.5	68	23.3	72	24.7
Northern	75	41.8	64	35.7	47	26.2
North Western	61	51.3	50	42.1	46	38.7
Central West	46	25.7	53	29.6	51	28.5
South Eastern	33	16.6	33	16.5	32	16.0
Murrumbidgee	50	32.7	43	28.1	38	24.8
Murray	15	13.1	17	14.8	15	13.1
Far West	9	37.7	14	59.1	10	42.2
New South Wales*	6,270	93.8	4,973	73.9	5,109	75.9

[^] The composition of robbery offences changed significantly for the 2004 report. For robbery offences, reports from 2004 onwards cannot be compared with reports prior to 2004. (See Explanatory Notes, page vii).

* The total for New South Wales includes 1 recorded incident in 2003 and 2 recorded incidents in 2005 where the offence occurred in a custodial institution.

TABLE 4.6 RECORDED CRIMINAL INCIDENTS, 2003 TO 2005: STATISTICAL DIVISION**ROBBERY WITH A FIREARM[^]**

<i>Statistical Division where offence occurred</i>	<i>Recorded criminal incidents</i>					
	<i>2003</i>		<i>2004</i>		<i>2005</i>	
	<i>Number</i>	<i>Rate per 100,000 population</i>	<i>Number</i>	<i>Rate per 100,000 population</i>	<i>Number</i>	<i>Rate per 100,000 population</i>
Sydney	734	17.5	608	14.4	443	10.5
Inner Sydney	157	51.4	129	41.5	77	24.8
Eastern Suburbs	31	12.8	32	13.2	20	8.3
St George-Sutherland	55	12.6	58	13.2	26	5.9
Canterbury-Bankstown	89	28.7	69	22.2	55	17.7
Fairfield-Liverpool	83	23.5	74	20.8	64	18.0
Outer South Western Sydney	19	7.9	17	7.1	11	4.6
Inner Western Sydney	62	37.4	47	27.9	33	19.6
Central Western Sydney	93	31.0	72	23.6	61	20.0
Outer Western Sydney	15	4.7	19	6.0	19	6.0
Blacktown	25	9.2	24	8.6	19	6.8
Lower Northern Sydney	45	15.2	33	11.0	21	7.0
Central Northern Sydney	23	5.5	13	3.1	13	3.1
Northern Beaches	21	9.0	3	1.3	4	1.7
Gosford-Wyong	16	5.3	18	5.9	20	6.6
Hunter	27	4.5	11	1.8	24	4.0
Illawarra	11	2.7	15	3.7	5	1.2
Richmond-Tweed	1	0.5	4	1.8	0	0.0
Mid-North Coast	4	1.4	7	2.4	6	2.1
Northern	5	2.8	2	1.1	3	1.7
North Western	3	2.5	7	5.9	1	0.8
Central West	2	1.1	0	0.0	1	0.6
South Eastern	2	1.0	5	2.5	2	1.0
Murrumbidgee	3	2.0	5	3.3	1	0.7
Murray	0	0.0	2	1.7	1	0.9
Far West	1	4.2	0	0.0	1	4.2
New South Wales	793	11.9	666	9.9	488	7.2

[^] The composition of robbery offences changed significantly for the 2004 report. For robbery offences, reports from 2004 onwards cannot be compared with reports prior to 2004. (See Explanatory Notes, page vii).

TABLE 4.7 RECORDED CRIMINAL INCIDENTS, 2003 TO 2005: STATISTICAL DIVISION**ROBBERY WITH A WEAPON NOT A FIREARM[^]**

<i>Statistical Division where offence occurred</i>	<i>Recorded criminal incidents</i>					
	<i>2003</i>		<i>2004</i>		<i>2005</i>	
	<i>Number</i>	<i>Rate per 100,000 population</i>	<i>Number</i>	<i>Rate per 100,000 population</i>	<i>Number</i>	<i>Rate per 100,000 population</i>
Sydney	2,615	62.3	2,176	51.4	2,275	53.8
Inner Sydney	665	217.5	632	203.4	611	196.6
Eastern Suburbs	132	54.7	123	50.9	122	50.5
St George-Sutherland	163	37.2	139	31.6	158	35.9
Canterbury-Bankstown	299	96.5	190	61.2	281	90.5
Fairfield-Liverpool	286	80.8	234	65.8	190	53.4
Outer South Western Sydney	72	30.0	78	32.4	107	44.4
Inner Western Sydney	205	123.5	174	103.2	172	102.0
Central Western Sydney	294	97.8	212	69.5	217	71.1
Outer Western Sydney	89	27.9	96	30.2	83	26.1
Blacktown	133	48.7	99	35.5	78	28.0
Lower Northern Sydney	85	28.7	86	28.8	103	34.4
Central Northern Sydney	82	19.6	54	12.7	78	18.4
Northern Beaches	43	18.4	14	6.0	25	10.7
Gosford-Wyong	67	22.1	45	14.8	50	16.4
Hunter	142	23.7	175	29.0	114	18.9
Illawarra	84	20.6	101	24.6	112	27.3
Richmond-Tweed	20	9.0	24	10.7	24	10.7
Mid-North Coast	29	10.1	40	13.7	42	14.4
Northern	15	8.4	12	6.7	17	9.5
North Western	18	15.1	29	24.4	28	23.6
Central West	14	7.8	17	9.5	12	6.7
South Eastern	15	7.6	14	7.0	10	5.0
Murrumbidgee	8	5.2	13	8.5	15	9.8
Murray	9	7.9	6	5.2	3	2.6
Far West	1	4.2	1	4.2	4	16.9
New South Wales*	2,971	44.5	2,609	38.8	2,656	39.5

[^] The composition of robbery offences changed significantly for the 2004 report. For robbery offences, reports from 2004 onwards cannot be compared with reports prior to 2004. (See Explanatory Notes, page vii).

* The total for New South Wales includes 1 recorded incident in 2003 and 1 recorded incident in 2004 where the offence occurred in a custodial institution.

TABLE 4.8 RECORDED CRIMINAL INCIDENTS, 2003 TO 2005: STATISTICAL DIVISION**BREAK AND ENTER – DWELLING**

<i>Statistical Division where offence occurred</i>	<i>Recorded criminal incidents</i>					
	<i>2003</i>		<i>2004</i>		<i>2005</i>	
	<i>Number</i>	<i>Rate per 100,000 population</i>	<i>Number</i>	<i>Rate per 100,000 population</i>	<i>Number</i>	<i>Rate per 100,000 population</i>
Sydney	39,071	930.6	34,272	809.8	29,760	703.2
Inner Sydney	4,877	1,595.4	4,010	1,290.3	4,067	1,308.6
Eastern Suburbs	3,583	1,484.0	2,672	1,105.9	2,153	891.1
St George-Sutherland	3,971	906.8	2,910	660.7	2,161	490.6
Canterbury-Bankstown	2,540	819.7	1,997	643.2	1,769	569.8
Fairfield-Liverpool	3,067	866.7	2,826	794.8	2,667	750.1
Outer South Western Sydney	2,383	994.1	2,488	1,032.7	2,018	837.6
Inner Western Sydney	1,935	1,166.2	1,712	1,015.3	1,402	831.5
Central Western Sydney	3,106	1,033.7	3,160	1,035.8	2,892	947.9
Outer Western Sydney	2,333	730.9	2,057	646.5	1,808	568.3
Blacktown	2,322	850.3	2,475	888.6	2,431	872.8
Lower Northern Sydney	2,820	950.6	2,590	866.1	1,561	522.0
Central Northern Sydney	2,258	539.0	2,053	484.6	1,818	429.2
Northern Beaches	1,469	630.0	1,284	547.3	956	407.5
Gosford-Wyong	2,407	795.4	2,038	669.1	2,057	675.3
Hunter	6,104	1,018.1	5,881	973.3	5,576	922.8
Illawarra	4,488	1,100.6	3,645	888.7	3,407	830.7
Richmond-Tweed	1,656	747.7	1,666	744.2	1,363	608.8
Mid-North Coast	2,143	744.7	2,187	749.3	1,840	630.4
Northern	1,863	1,037.3	1,692	944.6	1,513	844.7
North Western	2,003	1,683.0	1,892	1,593.5	1,478	1,244.8
Central West	1,496	836.5	1,444	805.7	1,433	799.5
South Eastern	1,323	666.6	1,136	566.5	1,051	524.1
Murrumbidgee	1,141	746.3	1,035	675.8	1,114	727.4
Murray	748	654.8	717	625.4	871	759.7
Far West	291	1,218.7	286	1,207.5	288	1,215.9
New South Wales	62,327	932.8	55,853	829.8	49,694	738.3

TABLE 4.9 RECORDED CRIMINAL INCIDENTS, 2003 TO 2005: STATISTICAL DIVISION**BREAK AND ENTER – NON-DWELLING**

<i>Statistical Division where offence occurred</i>	<i>Recorded criminal incidents</i>					
	<i>2003</i>		<i>2004</i>		<i>2005</i>	
	<i>Number</i>	<i>Rate per 100,000 population</i>	<i>Number</i>	<i>Rate per 100,000 population</i>	<i>Number</i>	<i>Rate per 100,000 population</i>
Sydney	19,074	454.3	15,499	366.2	14,414	340.6
Inner Sydney	3,347	1,094.9	3,004	966.6	2,804	902.2
Eastern Suburbs	849	351.6	688	284.7	578	239.2
St George-Sutherland	1,322	301.9	980	222.5	1,034	234.7
Canterbury-Bankstown	1,117	360.5	1,032	332.4	899	289.6
Fairfield-Liverpool	1,537	434.4	1,258	353.8	1,021	287.2
Outer South Western Sydney	1,007	420.1	898	372.7	1,005	417.1
Inner Western Sydney	527	317.6	415	246.1	513	304.2
Central Western Sydney	1,735	577.4	1,421	465.8	1,289	422.5
Outer Western Sydney	1,532	480.0	1,083	340.4	856	269.0
Blacktown	1,244	455.5	941	337.8	805	289.0
Lower Northern Sydney	1,505	507.3	1,023	342.1	1,021	341.4
Central Northern Sydney	1,036	247.3	877	207.0	874	206.3
Northern Beaches	760	325.9	600	255.8	550	234.5
Gosford-Wyong	1,556	514.2	1,279	419.9	1,165	382.5
Hunter	4,429	738.7	3,709	613.8	3,265	540.3
Illawarra	2,460	603.3	2,015	491.3	1,715	418.1
Richmond-Tweed	1,506	680.0	1,190	531.5	1,152	514.6
Mid-North Coast	1,838	638.8	1,856	635.9	1,799	616.4
Northern	1,349	751.1	1,002	559.4	986	550.5
North Western	1,606	1,349.4	1,203	1,013.2	1,043	878.4
Central West	1,016	568.1	923	515.0	875	488.2
South Eastern	1,105	556.8	863	430.4	813	405.4
Murrumbidgee	928	606.9	802	523.7	683	446.0
Murray	816	714.3	588	512.9	602	525.1
Far West	243	1,017.7	179	755.7	140	591.1
New South Wales*	36,374	544.4	29,833	443.2	27,492	408.4

* The total for New South Wales includes 4 recorded incidents in 2003, 4 recorded incidents in 2004 and 5 recorded incidents in 2005 where the offence occurred in a custodial institution.

TABLE 4.10 RECORDED CRIMINAL INCIDENTS, 2003 TO 2005: STATISTICAL DIVISIONRECEIVING OR HANDLING STOLEN GOODS[^]

<i>Statistical Division where offence occurred</i>	<i>Recorded criminal incidents</i>					
	<i>2003</i>		<i>2004</i>		<i>2005</i>	
	<i>Number</i>	<i>Rate per 100,000 population</i>	<i>Number</i>	<i>Rate per 100,000 population</i>	<i>Number</i>	<i>Rate per 100,000 population</i>
Sydney	6,182	147.2	5,154	121.8	4,235	100.1
Inner Sydney	1,731	566.2	1,468	472.3	1,171	376.8
Eastern Suburbs	266	110.2	311	128.7	218	90.2
St George-Sutherland	378	86.3	274	62.2	259	58.8
Canterbury-Bankstown	298	96.2	278	89.5	195	62.8
Fairfield-Liverpool	535	151.2	519	146.0	451	126.8
Outer South Western Sydney	272	113.5	242	100.4	208	86.3
Inner Western Sydney	181	109.1	135	80.1	98	58.1
Central Western Sydney	573	190.7	477	156.4	419	137.3
Outer Western Sydney	378	118.4	306	96.2	251	78.9
Blacktown	582	213.1	415	149.0	363	130.3
Lower Northern Sydney	254	85.6	177	59.2	134	44.8
Central Northern Sydney	167	39.9	151	35.6	115	27.1
Northern Beaches	132	56.6	104	44.3	114	48.6
Gosford-Wyong	435	143.8	297	97.5	239	78.5
Hunter	741	123.6	636	105.3	454	75.1
Illawarra	531	130.2	549	133.9	380	92.6
Richmond-Tweed	315	142.2	243	108.5	191	85.3
Mid-North Coast	313	108.8	295	101.1	226	77.4
Northern	215	119.7	121	67.6	126	70.3
North Western	231	194.1	193	162.5	155	130.5
Central West	248	138.7	160	89.3	142	79.2
South Eastern	257	129.5	217	108.2	142	70.8
Murrumbidgee	176	115.1	167	109.0	122	79.7
Murray	163	142.7	111	96.8	145	126.5
Far West	53	222.0	27	114.0	28	118.2
New South Wales*	9,441	141.3	7,889	117.2	6,360	94.5

[^] Receiving or handling stolen goods is a new offence category. It combines the previous categories of 'Receiving' and 'Goods in custody'.

* The total for New South Wales includes 16 recorded incidents in 2003, 16 recorded incidents in 2004 and 14 recorded incidents in 2005 where the offence occurred in a custodial institution.

TABLE 4.11 RECORDED CRIMINAL INCIDENTS, 2003 TO 2005: STATISTICAL DIVISION**MOTOR VEHICLE THEFT**

<i>Statistical Division where offence occurred</i>	<i>Recorded criminal incidents</i>					
	<i>2003</i>		<i>2004</i>		<i>2005</i>	
	<i>Number</i>	<i>Rate per 100,000 population</i>	<i>Number</i>	<i>Rate per 100,000 population</i>	<i>Number</i>	<i>Rate per 100,000 population</i>
Sydney	24,549	584.7	23,361	552.0	20,169	476.6
Inner Sydney	3,314	1,084.1	3,269	1,051.8	2,461	791.9
Eastern Suburbs	1,497	620.0	1,680	695.3	1,131	468.1
St George-Sutherland	1,883	430.0	1,963	445.7	1,548	351.4
Canterbury-Bankstown	2,723	878.8	2,611	841.0	2,269	730.8
Fairfield-Liverpool	2,282	644.9	2,293	644.9	1,996	561.4
Outer South Western Sydney	1,722	718.4	1,776	737.2	1,477	613.1
Inner Western Sydney	1,225	738.3	993	588.9	846	501.7
Central Western Sydney	2,467	821.1	2,248	736.8	2,267	743.1
Outer Western Sydney	1,736	543.9	1,545	485.6	1,346	423.1
Blacktown	1,802	659.9	1,697	609.3	1,604	575.9
Lower Northern Sydney	1,048	353.3	858	286.9	730	244.1
Central Northern Sydney	827	197.4	656	154.9	725	171.1
Northern Beaches	571	244.9	467	199.1	489	208.5
Gosford-Wyong	1,452	479.8	1,305	428.4	1,280	420.2
Hunter	3,172	529.0	2,989	494.7	2,923	483.7
Illawarra	2,533	621.2	2,590	631.5	2,016	491.5
Richmond-Tweed	823	371.6	722	322.5	708	316.2
Mid-North Coast	973	338.1	879	301.2	683	234.0
Northern	370	206.0	326	182.0	341	190.4
North Western	567	476.4	694	584.5	686	577.8
Central West	447	249.9	410	228.8	387	215.9
South Eastern	613	308.9	501	249.8	445	221.9
Murrumbidgee	429	280.6	390	254.7	290	189.4
Murray	361	316.0	319	278.3	384	334.9
Far West	60	251.3	50	211.1	71	299.8
New South Wales*	34,898	522.3	33,234	493.7	29,103	432.4

* The total for New South Wales includes 1 recorded incident in 2003 and 3 recorded incidents in 2004 where the offence occurred in a custodial institution.

TABLE 4.12 RECORDED CRIMINAL INCIDENTS, 2003 TO 2005: STATISTICAL DIVISION**STEAL FROM MOTOR VEHICLE**

<i>Statistical Division where offence occurred</i>	<i>Recorded criminal incidents</i>					
	<i>2003</i>		<i>2004</i>		<i>2005</i>	
	<i>Number</i>	<i>Rate per 100,000 population</i>	<i>Number</i>	<i>Rate per 100,000 population</i>	<i>Number</i>	<i>Rate per 100,000 population</i>
Sydney	43,619	1,038.9	40,321	952.7	35,708	843.7
Inner Sydney	11,269	3,686.3	9,248	2,975.7	7,307	2,351.1
Eastern Suburbs	2,769	1,146.8	3,094	1,280.5	2,034	841.8
St George-Sutherland	2,913	665.2	2,741	622.3	2,604	591.2
Canterbury-Bankstown	2,615	843.9	2,583	831.9	2,494	803.3
Fairfield-Liverpool	2,909	822.1	3,112	875.2	2,958	831.9
Outer South Western Sydney	2,035	848.9	1,996	828.5	2,012	835.1
Inner Western Sydney	1,689	1,017.9	1,631	967.3	1,377	816.6
Central Western Sydney	3,132	1,042.4	3,061	1,003.3	3,171	1,039.4
Outer Western Sydney	3,253	1,019.2	2,729	857.7	1,999	628.3
Blacktown	2,319	849.2	2,124	762.6	2,119	760.8
Lower Northern Sydney	2,624	884.6	2,477	828.4	1,799	601.6
Central Northern Sydney	2,090	498.9	1,858	438.6	1,979	467.2
Northern Beaches	1,594	683.6	1,554	662.4	1,682	717.0
Gosford-Wyong	2,408	795.7	2,113	693.7	2,173	713.4
Hunter	6,045	1,008.2	5,364	887.7	5,454	902.6
Illawarra	3,927	963.0	3,404	829.9	3,153	768.7
Richmond-Tweed	1,832	827.2	1,445	645.4	1,537	686.5
Mid-North Coast	2,144	745.1	2,183	747.9	1,810	620.1
Northern	1,438	800.6	1,089	608.0	1,161	648.2
North Western	1,489	1,251.1	1,526	1,285.2	1,351	1,137.8
Central West	1,343	751.0	1,168	651.7	1,229	685.7
South Eastern	1,286	648.0	1,159	578.0	939	468.3
Murrumbidgee	1,229	803.8	1,139	743.7	1,094	714.4
Murray	928	812.4	890	776.3	798	696.1
Far West	168	703.6	133	561.5	179	755.7
New South Wales*	65,448	979.5	59,827	888.8	54,415	808.4

* The total for New South Wales includes 6 recorded incidents in 2004 and 2 recorded incidents in 2005 where the offence occurred in a custodial institution.

TABLE 4.13 RECORDED CRIMINAL INCIDENTS, 2003 TO 2005: STATISTICAL DIVISION**STEAL FROM RETAIL STORE**

<i>Statistical Division where offence occurred</i>	<i>Recorded criminal incidents</i>					
	<i>2003</i>		<i>2004</i>		<i>2005</i>	
	<i>Number</i>	<i>Rate per 100,000 population</i>	<i>Number</i>	<i>Rate per 100,000 population</i>	<i>Number</i>	<i>Rate per 100,000 population</i>
Sydney	14,105	335.9	12,021	284.0	12,200	288.3
Inner Sydney	2,227	728.5	1,991	640.6	2,078	668.6
Eastern Suburbs	835	345.8	755	312.5	981	406.0
St George-Sutherland	1,049	239.5	950	215.7	758	172.1
Canterbury-Bankstown	853	275.3	719	231.6	580	186.8
Fairfield-Liverpool	1,222	345.3	1,020	286.9	1,058	297.6
Outer South Western Sydney	888	370.4	724	300.5	773	320.8
Inner Western Sydney	561	338.1	501	297.1	512	303.6
Central Western Sydney	1,256	418.0	1,130	370.4	1,065	349.1
Outer Western Sydney	1,145	358.7	754	237.0	827	259.9
Blacktown	1,282	469.5	963	345.7	999	358.7
Lower Northern Sydney	776	261.6	852	284.9	854	285.6
Central Northern Sydney	620	148.0	584	137.9	560	132.2
Northern Beaches	458	196.4	333	142.0	397	169.2
Gosford-Wyong	933	308.3	745	244.6	758	248.8
Hunter	1,829	305.0	1,571	260.0	1,432	237.0
Illawarra	1,382	338.9	1,209	294.8	1,024	249.7
Richmond-Tweed	920	415.4	808	360.9	696	310.9
Mid-North Coast	1,024	355.9	776	265.9	767	262.8
Northern	686	381.9	513	286.4	439	245.1
North Western	558	468.8	401	337.7	411	346.2
Central West	611	341.6	479	267.3	400	223.2
South Eastern	521	262.5	362	180.5	383	191.0
Murrumbidgee	485	317.2	375	244.9	277	180.9
Murray	282	246.9	249	217.2	237	206.7
Far West	74	309.9	51	215.3	39	164.7
New South Wales*	22,477	336.4	18,816	279.5	18,305	271.9

* The total for New South Wales includes 1 recorded incident in 2004 where the offence occurred in a custodial institution.

TABLE 4.14 RECORDED CRIMINAL INCIDENTS, 2003 TO 2005: STATISTICAL DIVISION**STEAL FROM DWELLING**

<i>Statistical Division where offence occurred</i>	<i>Recorded criminal incidents</i>					
	<i>2003</i>		<i>2004</i>		<i>2005</i>	
	<i>Number</i>	<i>Rate per 100,000 population</i>	<i>Number</i>	<i>Rate per 100,000 population</i>	<i>Number</i>	<i>Rate per 100,000 population</i>
Sydney	14,173	337.6	12,446	294.1	11,625	274.7
Inner Sydney	1,962	641.8	1,832	589.5	1,857	597.5
Eastern Suburbs	1,232	510.3	949	392.8	806	333.6
St George-Sutherland	1,177	268.8	963	218.6	748	169.8
Canterbury-Bankstown	581	187.5	593	191.0	555	178.8
Fairfield-Liverpool	839	237.1	722	203.1	669	188.2
Outer South Western Sydney	1,095	456.8	845	350.7	840	348.7
Inner Western Sydney	424	255.5	487	288.8	488	289.4
Central Western Sydney	803	267.3	780	255.7	698	228.8
Outer Western Sydney	1,153	361.2	980	308.0	908	285.4
Blacktown	1,125	412.0	993	356.5	911	327.1
Lower Northern Sydney	836	281.8	700	234.1	613	205.0
Central Northern Sydney	889	212.2	786	185.5	761	179.6
Northern Beaches	730	313.1	636	271.1	601	256.2
Gosford-Wyong	1,327	438.5	1,180	387.4	1,170	384.1
Hunter	3,447	574.9	3,192	528.3	3,285	543.7
Illawarra	2,429	595.7	2,150	524.2	1,802	439.4
Richmond-Tweed	1,293	583.8	1,304	582.5	1,196	534.2
Mid-North Coast	1,796	624.2	1,534	525.6	1,535	525.9
Northern	1,121	624.1	1,068	596.2	1,002	559.4
North Western	857	720.1	871	733.6	794	668.7
Central West	1,160	648.6	1,088	607.0	1,024	571.3
South Eastern	1,083	545.7	938	467.8	921	459.3
Murrumbidgee	1,061	693.9	876	572.0	941	614.5
Murray	662	579.5	721	628.9	664	579.2
Far West	257	1,076.3	233	983.7	217	916.2
New South Wales	29,339	439.1	26,421	392.5	25,006	371.5

TABLE 4.15 RECORDED CRIMINAL INCIDENTS, 2003 TO 2005: STATISTICAL DIVISION**STEAL FROM PERSON**

<i>Statistical Division where offence occurred</i>	<i>Recorded criminal incidents</i>					
	<i>2003</i>		<i>2004</i>		<i>2005</i>	
	<i>Number</i>	<i>Rate per 100,000 population</i>	<i>Number</i>	<i>Rate per 100,000 population</i>	<i>Number</i>	<i>Rate per 100,000 population</i>
Sydney	16,087	383.2	12,079	285.4	10,413	246.0
Inner Sydney	7,394	2,418.7	5,436	1,749.1	4,925	1,584.7
Eastern Suburbs	1,029	426.2	852	352.6	765	316.6
St George-Sutherland	845	193.0	550	124.9	410	93.1
Canterbury-Bankstown	729	235.3	510	164.3	317	102.1
Fairfield-Liverpool	778	219.9	648	182.2	464	130.5
Outer South Western Sydney	312	130.2	262	108.7	245	101.7
Inner Western Sydney	735	443.0	593	351.7	478	283.5
Central Western Sydney	1,079	359.1	793	259.9	742	243.2
Outer Western Sydney	468	146.6	354	111.3	330	103.7
Blacktown	642	235.1	437	156.9	389	139.7
Lower Northern Sydney	807	272.0	663	221.7	493	164.9
Central Northern Sydney	362	86.4	268	63.3	248	58.5
Northern Beaches	489	209.7	355	151.3	274	116.8
Gosford-Wyong	418	138.1	358	117.5	333	109.3
Hunter	745	124.3	644	106.6	620	102.6
Illawarra	594	145.7	487	118.7	456	111.2
Richmond-Tweed	317	143.1	261	116.6	275	122.8
Mid-North Coast	229	79.6	206	70.6	187	64.1
Northern	148	82.4	128	71.5	100	55.8
North Western	154	129.4	146	123.0	110	92.6
Central West	159	88.9	117	65.3	131	73.1
South Eastern	108	54.4	97	48.4	77	38.4
Murrumbidgee	106	69.3	89	58.1	92	60.1
Murray	75	65.7	65	56.7	64	55.8
Far West	34	142.4	19	80.2	18	76.0
New South Wales*	18,757	280.7	14,338	213.0	12,545	186.4

* The total for New South Wales includes 1 recorded incident in 2003 and 2 recorded incidents in 2005 where the offence occurred in a custodial institution.

TABLE 4.16 RECORDED CRIMINAL INCIDENTS, 2003 TO 2005: STATISTICAL DIVISION**FRAUD**

<i>Statistical Division where offence occurred</i>	<i>Recorded criminal incidents</i>					
	<i>2003</i>		<i>2004</i>		<i>2005</i>	
	<i>Number</i>	<i>Rate per 100,000 population</i>	<i>Number</i>	<i>Rate per 100,000 population</i>	<i>Number</i>	<i>Rate per 100,000 population</i>
Sydney	22,826	543.7	24,478	578.4	25,605	605.0
Inner Sydney	5,050	1,652.0	5,390	1,734.3	5,698	1,833.4
Eastern Suburbs	1,373	568.7	1,557	644.4	1,669	690.7
St George-Sutherland	1,619	369.7	2,015	457.5	1,867	423.9
Canterbury-Bankstown	1,553	501.2	1,790	576.5	1,975	636.1
Fairfield-Liverpool	1,984	560.7	2,054	577.7	2,114	594.6
Outer South Western Sydney	786	327.9	845	350.7	863	358.2
Inner Western Sydney	756	455.6	929	550.9	969	574.7
Central Western Sydney	2,276	757.5	2,172	711.9	2,374	778.1
Outer Western Sydney	1,243	389.4	1,600	502.9	1,336	419.9
Blacktown	1,637	599.5	1,558	559.4	1,751	628.7
Lower Northern Sydney	1,565	527.6	1,794	599.9	1,830	612.0
Central Northern Sydney	993	237.0	1,152	271.9	1,155	272.7
Northern Beaches	711	304.9	703	299.7	1,099	468.5
Gosford-Wyong	1,280	423.0	919	301.7	905	297.1
Hunter	2,082	347.2	2,133	353.0	2,056	340.3
Illawarra	1,303	319.5	1,208	294.5	1,245	303.5
Richmond-Tweed	722	326.0	753	336.3	739	330.1
Mid-North Coast	909	315.9	863	295.7	819	280.6
Northern	507	282.3	560	312.6	402	224.4
North Western	351	294.9	425	357.9	395	332.7
Central West	533	298.0	490	273.4	434	242.1
South Eastern	662	333.6	659	328.6	536	267.3
Murrumbidgee	550	359.7	477	311.5	458	299.1
Murray	298	260.9	243	212.0	345	300.9
Far West	61	255.5	84	354.6	77	325.1
New South Wales*	30,809	461.1	32,383	481.1	33,117	492.0

* The total for New South Wales includes 5 recorded incidents in 2003, 10 recorded incidents in 2004 and 6 recorded incidents in 2005 where the offence occurred in a custodial institution.

TABLE 4.17 RECORDED CRIMINAL INCIDENTS, 2003 TO 2005: STATISTICAL DIVISION**MALICIOUS DAMAGE TO PROPERTY**

<i>Statistical Division where offence occurred</i>	<i>Recorded criminal incidents</i>					
	<i>2003</i>		<i>2004</i>		<i>2005</i>	
	<i>Number</i>	<i>Rate per 100,000 population</i>	<i>Number</i>	<i>Rate per 100,000 population</i>	<i>Number</i>	<i>Rate per 100,000 population</i>
Sydney	51,195	1,219.4	52,873	1,249.3	57,030	1,347.6
Inner Sydney	6,029	1,972.2	6,194	1,993.0	6,361	2,046.7
Eastern Suburbs	2,781	1,151.8	2,888	1,195.3	3,187	1,319.0
St George-Sutherland	4,681	1,068.9	4,504	1,022.5	5,059	1,148.5
Canterbury-Bankstown	3,030	977.8	3,372	1,086.1	3,501	1,127.6
Fairfield-Liverpool	3,827	1,081.5	3,978	1,118.8	3,981	1,119.6
Outer South Western Sydney	3,987	1,663.2	4,513	1,873.2	4,982	2,067.9
Inner Western Sydney	1,387	835.9	1,677	994.5	1,865	1,106.0
Central Western Sydney	3,375	1,123.3	3,589	1,176.4	3,822	1,252.8
Outer Western Sydney	4,729	1,481.6	4,587	1,441.7	5,416	1,702.3
Blacktown	4,307	1,577.2	4,333	1,555.7	4,846	1,739.8
Lower Northern Sydney	2,575	868.0	2,785	931.4	2,694	900.9
Central Northern Sydney	2,899	692.0	2,844	671.4	3,550	838.0
Northern Beaches	2,237	959.3	2,032	866.2	2,155	918.6
Gosford-Wyong	5,351	1,768.3	5,577	1,830.9	5,611	1,842.1
Hunter	9,789	1,632.7	9,273	1,534.7	10,622	1,757.9
Illawarra	6,407	1,571.2	6,517	1,588.9	7,024	1,712.6
Richmond-Tweed	2,903	1,310.7	2,859	1,277.1	3,160	1,411.5
Mid-North Coast	4,698	1,632.7	4,596	1,574.7	4,834	1,656.2
Northern	3,798	2,114.6	3,625	2,023.8	3,910	2,182.9
North Western	3,308	2,779.5	3,241	2,729.7	3,400	2,863.6
Central West	3,416	1,910.1	3,498	1,951.7	3,527	1,967.8
South Eastern	3,270	1,647.6	3,196	1,593.8	3,458	1,724.4
Murrumbidgee	3,247	2,123.7	2,873	1,876.0	3,034	1,981.2
Murray	1,988	1,740.3	1,877	1,637.2	2,052	1,789.9
Far West	680	2,847.8	581	2,452.9	660	2,786.5
New South Wales*	94,819	1,419.0	95,123	1,413.1	102,816	1,527.4

* The total for New South Wales includes 120 recorded incidents in 2003, 114 recorded incidents in 2004 and 105 recorded incidents in 2005 where the offence occurred in a custodial institution.

TABLE 4.18 RECORDED CRIMINAL INCIDENTS, 2003 TO 2005: STATISTICAL DIVISION**POSSESSION AND/OR USE OF COCAINE**

<i>Statistical Division where offence occurred</i>	<i>Recorded criminal incidents</i>					
	<i>2003</i>		<i>2004</i>		<i>2005</i>	
	<i>Number</i>	<i>Rate per 100,000 population</i>	<i>Number</i>	<i>Rate per 100,000 population</i>	<i>Number</i>	<i>Rate per 100,000 population</i>
Sydney	102	2.4	172	4.1	217	5.1
Inner Sydney	46	15.0	85	27.3	117	37.6
Eastern Suburbs	16	6.6	15	6.2	25	10.3
St George-Sutherland	2	0.5	3	0.7	11	2.5
Canterbury-Bankstown	6	1.9	11	3.5	9	2.9
Fairfield-Liverpool	11	3.1	22	6.2	13	3.7
Outer South Western Sydney	0	0.0	2	0.8	3	1.2
Inner Western Sydney	2	1.2	4	2.4	1	0.6
Central Western Sydney	7	2.3	10	3.3	9	3.0
Outer Western Sydney	1	0.3	3	0.9	2	0.6
Blacktown	1	0.4	1	0.4	4	1.4
Lower Northern Sydney	4	1.3	5	1.7	7	2.3
Central Northern Sydney	2	0.5	3	0.7	5	1.2
Northern Beaches	3	1.3	7	3.0	6	2.6
Gosford-Wyong	1	0.3	1	0.3	5	1.6
Hunter	2	0.3	3	0.5	3	0.5
Illawarra	2	0.5	2	0.5	2	0.5
Richmond-Tweed	3	1.4	6	2.7	2	0.9
Mid-North Coast	2	0.7	2	0.7	2	0.7
Northern	0	0.0	3	1.7	0	0.0
North Western	0	0.0	0	0.0	0	0.0
Central West	0	0.0	1	0.6	1	0.6
South Eastern	1	0.5	1	0.5	2	1.0
Murrumbidgee	1	0.7	1	0.7	0	0.0
Murray	0	0.0	0	0.0	1	0.9
Far West	0	0.0	0	0.0	0	0.0
New South Wales*	117	1.8	194	2.9	231	3.4

* The total for New South Wales includes 4 recorded incidents in 2003, 3 recorded incidents in 2004 and 1 recorded incident in 2005 where the offence occurred in a custodial institution.

TABLE 4.19 RECORDED CRIMINAL INCIDENTS, 2003 TO 2005: STATISTICAL DIVISION**POSSESSION AND/OR USE OF NARCOTICS**

<i>Statistical Division where offence occurred</i>	<i>Recorded criminal incidents</i>					
	<i>2003</i>		<i>2004</i>		<i>2005</i>	
	<i>Number</i>	<i>Rate per 100,000 population</i>	<i>Number</i>	<i>Rate per 100,000 population</i>	<i>Number</i>	<i>Rate per 100,000 population</i>
Sydney	739	17.6	795	18.8	722	17.1
Inner Sydney	195	63.8	238	76.6	242	77.9
Eastern Suburbs	11	4.6	13	5.4	34	14.1
St George-Sutherland	31	7.1	28	6.4	30	6.8
Canterbury-Bankstown	63	20.3	82	26.4	63	20.3
Fairfield-Liverpool	306	86.5	259	72.8	200	56.2
Outer South Western Sydney	8	3.3	12	5.0	9	3.7
Inner Western Sydney	13	7.8	18	10.7	13	7.7
Central Western Sydney	37	12.3	55	18.0	39	12.8
Outer Western Sydney	12	3.8	19	6.0	13	4.1
Blacktown	16	5.9	18	6.5	20	7.2
Lower Northern Sydney	9	3.0	4	1.3	8	2.7
Central Northern Sydney	8	1.9	9	2.1	9	2.1
Northern Beaches	9	3.9	8	3.4	5	2.1
Gosford-Wyong	21	6.9	32	10.5	37	12.1
Hunter	42	7.0	24	4.0	30	5.0
Illawarra	20	4.9	18	4.4	26	6.3
Richmond-Tweed	27	12.2	12	5.4	20	8.9
Mid-North Coast	20	7.0	17	5.8	11	3.8
Northern	3	1.7	1	0.6	0	0.0
North Western	7	5.9	2	1.7	1	0.8
Central West	6	3.4	6	3.3	5	2.8
South Eastern	7	3.5	14	7.0	11	5.5
Murrumbidgee	3	2.0	6	3.9	4	2.6
Murray	3	2.6	4	3.5	2	1.7
Far West	0	0.0	1	4.2	0	0.0
New South Wales*	904	13.5	929	13.8	849	12.6

* The total for New South Wales includes 27 recorded incidents in 2003, 29 recorded incidents in 2004 and 17 recorded incidents in 2005 where the offence occurred in a custodial institution.

TABLE 4.20 RECORDED CRIMINAL INCIDENTS, 2003 TO 2005: STATISTICAL DIVISION**POSSESSION AND/OR USE OF CANNABIS**

<i>Statistical Division where offence occurred</i>	<i>Recorded criminal incidents</i>					
	<i>2003</i>		<i>2004</i>		<i>2005</i>	
	<i>Number</i>	<i>Rate per 100,000 population</i>	<i>Number</i>	<i>Rate per 100,000 population</i>	<i>Number</i>	<i>Rate per 100,000 population</i>
Sydney	5,849	139.3	6,913	163.3	6,633	156.7
Inner Sydney	1,267	414.5	1,848	594.6	1,625	522.9
Eastern Suburbs	264	109.3	263	108.8	285	118.0
St George-Sutherland	378	86.3	606	137.6	595	135.1
Canterbury-Bankstown	301	97.1	319	102.7	270	87.0
Fairfield-Liverpool	371	104.8	437	122.9	407	114.5
Outer South Western Sydney	324	135.2	287	119.1	347	144.0
Inner Western Sydney	249	150.1	405	240.2	206	122.2
Central Western Sydney	540	179.7	592	194.0	658	215.7
Outer Western Sydney	448	140.4	368	115.7	388	122.0
Blacktown	486	178.0	517	185.6	523	187.8
Lower Northern Sydney	189	63.7	205	68.6	150	50.2
Central Northern Sydney	407	97.2	366	86.4	501	118.3
Northern Beaches	183	78.5	258	110.0	214	91.2
Gosford-Wyong	442	146.1	442	145.1	464	152.3
Hunter	956	159.4	879	145.5	769	127.3
Illawarra	473	116.0	414	100.9	451	110.0
Richmond-Tweed	918	414.5	841	375.7	762	340.4
Mid-North Coast	799	277.7	644	220.6	581	199.1
Northern	371	206.6	340	189.8	310	173.1
North Western	207	173.9	251	211.4	243	204.7
Central West	324	181.2	262	146.2	331	184.7
South Eastern	424	213.6	405	202.0	434	216.4
Murrumbidgee	328	214.5	395	257.9	348	227.2
Murray	301	263.5	275	239.9	239	208.5
Far West	44	184.3	94	396.9	89	375.7
New South Wales*	11,386	170.4	12,114	180.0	11,523	171.2

* The total for New South Wales includes 392 recorded incidents in 2003, 401 recorded incidents in 2004 and 333 recorded incidents in 2005 where the offence occurred in a custodial institution.

TABLE 4.21 RECORDED CRIMINAL INCIDENTS, 2003 TO 2005: STATISTICAL DIVISION**POSSESSION AND/OR USE OF AMPHETAMINES**

<i>Statistical Division where offence occurred</i>	<i>Recorded criminal incidents</i>					
	<i>2003</i>		<i>2004</i>		<i>2005</i>	
	<i>Number</i>	<i>Rate per 100,000 population</i>	<i>Number</i>	<i>Rate per 100,000 population</i>	<i>Number</i>	<i>Rate per 100,000 population</i>
Sydney	1,013	24.1	1,169	27.6	1,238	29.3
Inner Sydney	255	83.4	315	101.4	348	112.0
Eastern Suburbs	43	17.8	32	13.2	64	26.5
St George-Sutherland	44	10.0	95	21.6	87	19.8
Canterbury-Bankstown	37	11.9	46	14.8	34	11.0
Fairfield-Liverpool	80	22.6	75	21.1	60	16.9
Outer South Western Sydney	69	28.8	61	25.3	72	29.9
Inner Western Sydney	15	9.0	42	24.9	36	21.3
Central Western Sydney	66	22.0	117	38.4	111	36.4
Outer Western Sydney	96	30.1	89	28.0	89	28.0
Blacktown	108	39.5	128	46.0	104	37.3
Lower Northern Sydney	38	12.8	23	7.7	29	9.7
Central Northern Sydney	57	13.6	36	8.5	90	21.2
Northern Beaches	28	12.0	39	16.6	32	13.6
Gosford-Wyong	77	25.4	71	23.3	82	26.9
Hunter	214	35.7	187	30.9	146	24.2
Illawarra	99	24.3	100	24.4	140	34.1
Richmond-Tweed	101	45.6	82	36.6	67	29.9
Mid-North Coast	97	33.7	58	19.9	87	29.8
Northern	39	21.7	37	20.7	43	24.0
North Western	35	29.4	51	43.0	37	31.2
Central West	61	34.1	50	27.9	63	35.1
South Eastern	62	31.2	63	31.4	78	38.9
Murrumbidgee	40	26.2	64	41.8	53	34.6
Murray	44	38.5	65	56.7	34	29.7
Far West	4	16.8	6	25.3	5	21.1
New South Wales*	1,858	27.8	1,982	29.4	2,035	30.2

* The total for New South Wales includes 49 recorded incidents in 2003, 50 recorded incidents in 2004 and 44 recorded incidents in 2005 where the offence occurred in a custodial institution.

TABLE 4.22 RECORDED CRIMINAL INCIDENTS, 2003 TO 2005: STATISTICAL DIVISION**POSSESSION AND/OR USE OF ECSTACY**

<i>Statistical Division where offence occurred</i>	<i>Recorded criminal incidents</i>					
	<i>2003</i>		<i>2004</i>		<i>2005</i>	
	<i>Number</i>	<i>Rate per 100,000 population</i>	<i>Number</i>	<i>Rate per 100,000 population</i>	<i>Number</i>	<i>Rate per 100,000 population</i>
Sydney	325	7.7	441	10.4	606	14.3
Inner Sydney	124	40.6	160	51.5	250	80.4
Eastern Suburbs	22	9.1	27	11.2	37	15.3
St George-Sutherland	17	3.9	21	4.8	32	7.3
Canterbury-Bankstown	20	6.5	13	4.2	19	6.1
Fairfield-Liverpool	17	4.8	17	4.8	22	6.2
Outer South Western Sydney	7	2.9	5	2.1	9	3.7
Inner Western Sydney	12	7.2	33	19.6	39	23.1
Central Western Sydney	30	10.0	49	16.1	64	21.0
Outer Western Sydney	17	5.3	17	5.3	13	4.1
Blacktown	2	0.7	9	3.2	11	3.9
Lower Northern Sydney	23	7.8	19	6.4	34	11.4
Central Northern Sydney	11	2.6	18	4.2	28	6.6
Northern Beaches	17	7.3	36	15.3	22	9.4
Gosford-Wyong	6	2.0	17	5.6	26	8.5
Hunter	19	3.2	30	5.0	62	10.3
Illawarra	21	5.1	21	5.1	19	4.6
Richmond-Tweed	25	11.3	33	14.7	26	11.6
Mid-North Coast	12	4.2	9	3.1	12	4.1
Northern	1	0.6	2	1.1	1	0.6
North Western	2	1.7	1	0.8	2	1.7
Central West	2	1.1	4	2.2	5	2.8
South Eastern	14	7.1	14	7.0	13	6.5
Murrumbidgee	5	3.3	3	2.0	3	2.0
Murray	6	5.3	10	8.7	7	6.1
Far West	1	4.2	1	4.2	1	4.2
New South Wales*	442	6.6	577	8.6	764	11.3

* The total for New South Wales includes 9 recorded incidents in 2003, 8 recorded incidents in 2004 and 7 recorded incidents in 2005 where the offence occurred in a custodial institution.

TABLE 4.23 RECORDED CRIMINAL INCIDENTS, 2003 TO 2005: STATISTICAL DIVISION**DEALING, TRAFFICKING IN COCAINE**

<i>Statistical Division where offence occurred</i>	<i>Recorded criminal incidents</i>					
	<i>2003</i>		<i>2004</i>		<i>2005</i>	
	<i>Number</i>	<i>Rate per 100,000 population</i>	<i>Number</i>	<i>Rate per 100,000 population</i>	<i>Number</i>	<i>Rate per 100,000 population</i>
Sydney	38	0.9	81	1.9	91	2.2
Inner Sydney	12	3.9	51	16.4	51	16.4
Eastern Suburbs	8	3.3	16	6.6	13	5.4
St George-Sutherland	1	0.2	1	0.2	3	0.7
Canterbury-Bankstown	0	0.0	0	0.0	6	1.9
Fairfield-Liverpool	9	2.5	6	1.7	5	1.4
Outer South Western Sydney	0	0.0	0	0.0	0	0.0
Inner Western Sydney	1	0.6	2	1.2	4	2.4
Central Western Sydney	0	0.0	4	1.3	2	0.7
Outer Western Sydney	0	0.0	0	0.0	0	0.0
Blacktown	0	0.0	0	0.0	0	0.0
Lower Northern Sydney	4	1.3	0	0.0	0	0.0
Central Northern Sydney	1	0.2	0	0.0	0	0.0
Northern Beaches	2	0.9	1	0.4	3	1.3
Gosford-Wyong	0	0.0	0	0.0	4	1.3
Hunter	1	0.2	1	0.2	0	0.0
Illawarra	0	0.0	1	0.2	0	0.0
Richmond-Tweed	1	0.5	2	0.9	0	0.0
Mid-North Coast	0	0.0	0	0.0	0	0.0
Northern	0	0.0	1	0.6	1	0.6
North Western	0	0.0	0	0.0	1	0.8
Central West	0	0.0	0	0.0	0	0.0
South Eastern	0	0.0	1	0.5	0	0.0
Murrumbidgee	0	0.0	0	0.0	0	0.0
Murray	0	0.0	1	0.9	0	0.0
Far West	0	0.0	0	0.0	0	0.0
New South Wales*	41	0.6	88	1.3	94	1.4

* The total for New South Wales includes 1 recorded incident in 2003 and 1 recorded incident in 2005 where the offence occurred in a custodial institution.

TABLE 4.24 RECORDED CRIMINAL INCIDENTS, 2003 TO 2005: STATISTICAL DIVISION**DEALING, TRAFFICKING IN NARCOTICS**

<i>Statistical Division where offence occurred</i>	<i>Recorded criminal incidents</i>					
	<i>2003</i>		<i>2004</i>		<i>2005</i>	
	<i>Number</i>	<i>Rate per 100,000 population</i>	<i>Number</i>	<i>Rate per 100,000 population</i>	<i>Number</i>	<i>Rate per 100,000 population</i>
Sydney	463	11.0	436	10.3	321	7.6
Inner Sydney	116	37.9	171	55.0	124	39.9
Eastern Suburbs	7	2.9	1	0.4	9	3.7
St George-Sutherland	22	5.0	10	2.3	2	0.5
Canterbury-Bankstown	38	12.3	52	16.7	20	6.4
Fairfield-Liverpool	241	68.1	156	43.9	116	32.6
Outer South Western Sydney	4	1.7	17	7.1	3	1.2
Inner Western Sydney	11	6.6	1	0.6	1	0.6
Central Western Sydney	10	3.3	7	2.3	6	2.0
Outer Western Sydney	3	0.9	6	1.9	1	0.3
Blacktown	0	0.0	0	0.0	14	5.0
Lower Northern Sydney	0	0.0	1	0.3	1	0.3
Central Northern Sydney	0	0.0	2	0.5	3	0.7
Northern Beaches	0	0.0	1	0.4	0	0.0
Gosford-Wyong	11	3.6	11	3.6	21	6.9
Hunter	28	4.7	14	2.3	14	2.3
Illawarra	14	3.4	7	1.7	19	4.6
Richmond-Tweed	16	7.2	12	5.4	5	2.2
Mid-North Coast	10	3.5	21	7.2	8	2.7
Northern	0	0.0	1	0.6	0	0.0
North Western	1	0.8	0	0.0	0	0.0
Central West	3	1.7	0	0.0	0	0.0
South Eastern	3	1.5	13	6.5	1	0.5
Murrumbidgee	0	0.0	0	0.0	0	0.0
Murray	1	0.9	0	0.0	0	0.0
Far West	0	0.0	0	0.0	0	0.0
New South Wales*	545	8.2	505	7.5	370	5.5

* The total for New South Wales includes 6 recorded incidents in 2003, 1 recorded incident in 2004 and 2 recorded incidents in 2005 where the offence occurred in a custodial institution.

TABLE 4.25 RECORDED CRIMINAL INCIDENTS, 2003 TO 2005: STATISTICAL DIVISION**DEALING, TRAFFICKING IN CANNABIS**

<i>Statistical Division where offence occurred</i>	<i>Recorded criminal incidents</i>					
	<i>2003</i>		<i>2004</i>		<i>2005</i>	
	<i>Number</i>	<i>Rate per 100,000 population</i>	<i>Number</i>	<i>Rate per 100,000 population</i>	<i>Number</i>	<i>Rate per 100,000 population</i>
Sydney	334	8.0	356	8.4	333	7.9
Inner Sydney	99	32.4	93	29.9	71	22.8
Eastern Suburbs	19	7.9	15	6.2	20	8.3
St George-Sutherland	32	7.3	29	6.6	20	4.5
Canterbury-Bankstown	25	8.1	36	11.6	35	11.3
Fairfield-Liverpool	18	5.1	32	9.0	40	11.2
Outer South Western Sydney	15	6.3	20	8.3	36	14.9
Inner Western Sydney	8	4.8	15	8.9	6	3.6
Central Western Sydney	15	5.0	29	9.5	24	7.9
Outer Western Sydney	20	6.3	16	5.0	23	7.2
Blacktown	26	9.5	19	6.8	13	4.7
Lower Northern Sydney	8	2.7	7	2.3	10	3.3
Central Northern Sydney	12	2.9	8	1.9	10	2.4
Northern Beaches	9	3.9	6	2.6	6	2.6
Gosford-Wyong	28	9.3	31	10.2	19	6.2
Hunter	39	6.5	35	5.8	34	5.6
Illawarra	26	6.4	31	7.6	17	4.1
Richmond-Tweed	44	19.9	52	23.2	46	20.5
Mid-North Coast	55	19.1	59	20.2	17	5.8
Northern	15	8.4	25	14.0	13	7.3
North Western	16	13.4	18	15.2	19	16.0
Central West	29	16.2	14	7.8	18	10.0
South Eastern	31	15.6	24	12.0	26	13.0
Murrumbidgee	42	27.5	35	22.9	13	8.5
Murray	20	17.5	11	9.6	10	8.7
Far West	3	12.6	10	42.2	35	147.8
New South Wales*	674	10.1	688	10.2	592	8.8

* The total for New South Wales includes 20 recorded incidents in 2003, 18 recorded incidents in 2004 and 11 recorded incidents in 2005 where the offence occurred in a custodial institution.

TABLE 4.26 RECORDED CRIMINAL INCIDENTS, 2003 TO 2005: STATISTICAL DIVISION**DEALING, TRAFFICKING IN AMPHETAMINES**

<i>Statistical Division where offence occurred</i>	<i>Recorded criminal incidents</i>					
	<i>2003</i>		<i>2004</i>		<i>2005</i>	
	<i>Number</i>	<i>Rate per 100,000 population</i>	<i>Number</i>	<i>Rate per 100,000 population</i>	<i>Number</i>	<i>Rate per 100,000 population</i>
Sydney	276	6.6	276	6.5	350	8.3
Inner Sydney	73	23.9	75	24.1	61	19.6
Eastern Suburbs	10	4.1	13	5.4	15	6.2
St George-Sutherland	9	2.1	25	5.7	17	3.9
Canterbury-Bankstown	7	2.3	20	6.4	23	7.4
Fairfield-Liverpool	9	2.5	24	6.7	54	15.2
Outer South Western Sydney	29	12.1	15	6.2	14	5.8
Inner Western Sydney	0	0.0	5	3.0	5	3.0
Central Western Sydney	20	6.7	11	3.6	28	9.2
Outer Western Sydney	17	5.3	17	5.3	34	10.7
Blacktown	32	11.7	45	16.2	38	13.6
Lower Northern Sydney	12	4.0	1	0.3	7	2.3
Central Northern Sydney	9	2.1	2	0.5	11	2.6
Northern Beaches	10	4.3	4	1.7	6	2.6
Gosford-Wyong	39	12.9	19	6.2	37	12.1
Hunter	61	10.2	42	7.0	59	9.8
Illawarra	86	21.1	56	13.7	65	15.8
Richmond-Tweed	18	8.1	18	8.0	16	7.1
Mid-North Coast	46	16.0	5	1.7	14	4.8
Northern	5	2.8	8	4.5	8	4.5
North Western	12	10.1	18	15.2	17	14.3
Central West	33	18.5	9	5.0	20	11.2
South Eastern	34	17.1	20	10.0	36	18.0
Murrumbidgee	33	21.6	66	43.1	84	54.9
Murray	17	14.9	12	10.5	7	6.1
Far West	4	16.8	4	16.9	2	8.4
New South Wales*	629	9.4	536	8.0	679	10.1

* The total for New South Wales includes 4 recorded incidents in 2003, 2 recorded incidents in 2004 and 1 recorded incident in 2005 where the offence occurred in a custodial institution.

TABLE 4.27 RECORDED CRIMINAL INCIDENTS, 2003 TO 2005: STATISTICAL DIVISION**DEALING, TRAFFICKING IN ECSTACY**

<i>Statistical Division where offence occurred</i>	<i>Recorded criminal incidents</i>					
	<i>2003</i>		<i>2004</i>		<i>2005</i>	
	<i>Number</i>	<i>Rate per 100,000 population</i>	<i>Number</i>	<i>Rate per 100,000 population</i>	<i>Number</i>	<i>Rate per 100,000 population</i>
Sydney	198	4.7	209	4.9	293	6.9
Inner Sydney	93	30.4	77	24.8	95	30.6
Eastern Suburbs	9	3.7	20	8.3	21	8.7
St George-Sutherland	13	3.0	19	4.3	9	2.0
Canterbury-Bankstown	10	3.2	8	2.6	11	3.5
Fairfield-Liverpool	7	2.0	8	2.2	24	6.7
Outer South Western Sydney	11	4.6	0	0.0	5	2.1
Inner Western Sydney	2	1.2	17	10.1	15	8.9
Central Western Sydney	17	5.7	23	7.5	21	6.9
Outer Western Sydney	5	1.6	6	1.9	3	0.9
Blacktown	0	0.0	6	2.2	4	1.4
Lower Northern Sydney	9	3.0	3	1.0	23	7.7
Central Northern Sydney	4	1.0	3	0.7	4	0.9
Northern Beaches	16	6.9	13	5.5	17	7.2
Gosford-Wyong	2	0.7	6	2.0	41	13.5
Hunter	13	2.2	8	1.3	58	9.6
Illawarra	5	1.2	6	1.5	12	2.9
Richmond-Tweed	5	2.3	18	8.0	10	4.5
Mid-North Coast	3	1.0	2	0.7	2	0.7
Northern	3	1.7	1	0.6	2	1.1
North Western	0	0.0	0	0.0	0	0.0
Central West	0	0.0	4	2.2	1	0.6
South Eastern	2	1.0	3	1.5	28	14.0
Murrumbidgee	24	15.7	12	7.8	3	2.0
Murray	0	0.0	10	8.7	3	2.6
Far West	0	0.0	0	0.0	0	0.0
New South Wales*	255	3.8	274	4.1	412	6.1

* The total for New South Wales includes 2 recorded incidents in 2003 and 1 recorded incident in 2004 where the offence occurred in a custodial institution.

TABLE 4.28 RECORDED CRIMINAL INCIDENTS, 2003 TO 2005: STATISTICAL DIVISION**CULTIVATING CANNABIS**

<i>Statistical Division where offence occurred</i>	<i>Recorded criminal incidents</i>					
	<i>2003</i>		<i>2004</i>		<i>2005</i>	
	<i>Number</i>	<i>Rate per 100,000 population</i>	<i>Number</i>	<i>Rate per 100,000 population</i>	<i>Number</i>	<i>Rate per 100,000 population</i>
Sydney	452	10.8	447	10.6	437	10.3
Inner Sydney	29	9.5	28	9.0	24	7.7
Eastern Suburbs	11	4.6	8	3.3	11	4.6
St George-Sutherland	33	7.5	42	9.5	29	6.6
Canterbury-Bankstown	30	9.7	57	18.4	54	17.4
Fairfield-Liverpool	37	10.5	53	14.9	82	23.1
Outer South Western Sydney	37	15.4	40	16.6	34	14.1
Inner Western Sydney	5	3.0	9	5.3	3	1.8
Central Western Sydney	29	9.7	32	10.5	21	6.9
Outer Western Sydney	59	18.5	34	10.7	41	12.9
Blacktown	54	19.8	38	13.6	34	12.2
Lower Northern Sydney	8	2.7	12	4.0	10	3.3
Central Northern Sydney	16	3.8	22	5.2	19	4.5
Northern Beaches	13	5.6	12	5.1	22	9.4
Gosford-Wyong	91	30.1	60	19.7	53	17.4
Hunter	180	30.0	154	25.5	124	20.5
Illawarra	100	24.5	106	25.8	75	18.3
Richmond-Tweed	175	79.0	186	83.1	128	57.2
Mid-North Coast	239	83.1	191	65.4	155	53.1
Northern	124	69.0	94	52.5	83	46.3
North Western	34	28.6	47	39.6	31	26.1
Central West	56	31.3	48	26.8	49	27.3
South Eastern	96	48.4	105	52.4	75	37.4
Murrumbidgee	51	33.4	39	25.5	27	17.6
Murray	36	31.5	34	29.7	30	26.2
Far West	3	12.6	14	59.1	9	38.0
New South Wales*	1,547	23.2	1,467	21.8	1,223	18.2

* The total for New South Wales includes 1 recorded incident in 2003 and 2 recorded incidents in 2004 where the offence occurred in a custodial institution.

TABLE 4.29 RECORDED CRIMINAL INCIDENTS, 2003 TO 2005: STATISTICAL DIVISION

<i>Statistical Division where offence occurred</i>	<i>Recorded criminal incidents</i>					
	<i>2003</i>		<i>2004</i>		<i>2005</i>	
	<i>Number</i>	<i>Rate per 100,000 population</i>	<i>Number</i>	<i>Rate per 100,000 population</i>	<i>Number</i>	<i>Rate per 100,000 population</i>
Sydney	3,270	77.9	3,420	80.8	3,552	83.9
Inner Sydney	471	154.1	525	168.9	667	214.6
Eastern Suburbs	184	76.2	191	79.0	197	81.5
St George-Sutherland	216	49.3	236	53.6	235	53.4
Canterbury-Bankstown	165	53.2	215	69.2	189	60.9
Fairfield-Liverpool	297	83.9	330	92.8	239	67.2
Outer South Western Sydney	232	96.8	231	95.9	246	102.1
Inner Western Sydney	97	58.5	82	48.6	103	61.1
Central Western Sydney	208	69.2	188	61.6	180	59.0
Outer Western Sydney	316	99.0	318	99.9	346	108.7
Blacktown	278	101.8	308	110.6	330	118.5
Lower Northern Sydney	148	49.9	145	48.5	129	43.1
Central Northern Sydney	134	32.0	111	26.2	143	33.8
Northern Beaches	184	78.9	212	90.4	176	75.0
Gosford-Wyong	340	112.4	328	107.7	372	122.1
Hunter	561	93.6	596	98.6	716	118.5
Illawarra	461	113.1	406	99.0	400	97.5
Richmond-Tweed	482	217.6	455	203.2	478	213.5
Mid-North Coast	572	198.8	527	180.6	598	204.9
Northern	480	267.3	498	278.0	507	283.0
North Western	613	515.1	601	506.2	687	578.6
Central West	327	182.8	286	159.6	293	163.5
South Eastern	381	192.0	392	195.5	455	226.9
Murrumbidgee	516	337.5	416	271.6	430	280.8
Murray	205	179.5	178	155.3	268	233.8
Far West	63	263.8	55	232.2	77	325.1
New South Wales*	7,942	118.9	7,837	116.4	8,465	125.8

^ Trespass was first included as a separate offence category in the 2004 report and was formerly contained within 'Other offences'.

* The total for New South Wales includes 11 recorded incidents in 2003, 7 recorded incidents in 2004 and 4 recorded incidents in 2005 where the offence occurred in a custodial institution.

TABLE 4.30 RECORDED CRIMINAL INCIDENTS, 2003 TO 2005: STATISTICAL DIVISION**OFFENSIVE CONDUCT**

<i>Statistical Division where offence occurred</i>	<i>Recorded criminal incidents</i>					
	<i>2003</i>		<i>2004</i>		<i>2005</i>	
	<i>Number</i>	<i>Rate per 100,000 population</i>	<i>Number</i>	<i>Rate per 100,000 population</i>	<i>Number</i>	<i>Rate per 100,000 population</i>
Sydney	1,601	38.1	1,741	41.1	2,163	51.1
Inner Sydney	400	130.8	444	142.9	621	199.8
Eastern Suburbs	77	31.9	94	38.9	144	59.6
St George-Sutherland	142	32.4	173	39.3	191	43.4
Canterbury-Bankstown	33	10.6	32	10.3	34	11.0
Fairfield-Liverpool	78	22.0	75	21.1	97	27.3
Outer South Western Sydney	93	38.8	64	26.6	97	40.3
Inner Western Sydney	34	20.5	33	19.6	19	11.3
Central Western Sydney	94	31.3	100	32.8	99	32.5
Outer Western Sydney	144	45.1	140	44.0	199	62.5
Blacktown	132	48.3	128	46.0	99	35.5
Lower Northern Sydney	58	19.6	62	20.7	57	19.1
Central Northern Sydney	32	7.6	36	8.5	75	17.7
Northern Beaches	133	57.0	170	72.5	253	107.8
Gosford-Wyong	151	49.9	190	62.4	178	58.4
Hunter	438	73.1	446	73.8	468	77.5
Illawarra	190	46.6	187	45.6	194	47.3
Richmond-Tweed	465	209.9	453	202.3	477	213.1
Mid-North Coast	419	145.6	428	146.6	441	151.1
Northern	371	206.6	429	239.5	470	262.4
North Western	313	263.0	322	271.2	268	225.7
Central West	249	139.2	221	123.3	270	150.6
South Eastern	301	151.7	311	155.1	366	182.5
Murrumbidgee	347	227.0	274	178.9	322	210.3
Murray	292	255.6	329	287.0	368	321.0
Far West	82	343.4	58	244.9	75	316.6
New South Wales*	5,070	75.9	5,201	77.3	5,883	87.4

* The total for New South Wales includes 2 recorded incidents in 2003, 2 recorded incidents in 2004 and 1 recorded incident in 2005 where the offence occurred in a custodial institution.

TABLE 4.31 RECORDED CRIMINAL INCIDENTS, 2003 TO 2005: STATISTICAL DIVISION**OFFENSIVE LANGUAGE**

<i>Statistical Division where offence occurred</i>	<i>Recorded criminal incidents</i>					
	<i>2003</i>		<i>2004</i>		<i>2005</i>	
	<i>Number</i>	<i>Rate per 100,000 population</i>	<i>Number</i>	<i>Rate per 100,000 population</i>	<i>Number</i>	<i>Rate per 100,000 population</i>
Sydney	2,246	53.5	2,268	53.6	2,816	66.5
Inner Sydney	370	121.0	413	132.9	568	182.8
Eastern Suburbs	104	43.1	112	46.4	154	63.7
St George-Sutherland	154	35.2	190	43.1	242	54.9
Canterbury-Bankstown	81	26.1	78	25.1	63	20.3
Fairfield-Liverpool	156	44.1	182	51.2	219	61.6
Outer South Western Sydney	122	50.9	134	55.6	225	93.4
Inner Western Sydney	49	29.5	52	30.8	40	23.7
Central Western Sydney	169	56.2	174	57.0	161	52.8
Outer Western Sydney	295	92.4	197	61.9	315	99.0
Blacktown	248	90.8	286	102.7	218	78.3
Lower Northern Sydney	53	17.9	70	23.4	67	22.4
Central Northern Sydney	85	20.3	55	13.0	113	26.7
Northern Beaches	106	45.5	111	47.3	147	62.7
Gosford-Wyong	254	83.9	214	70.3	284	93.2
Hunter	354	59.0	301	49.8	364	60.2
Illawarra	253	62.0	216	52.7	227	55.3
Richmond-Tweed	291	131.4	291	130.0	265	118.4
Mid-North Coast	457	158.8	428	146.6	437	149.7
Northern	352	196.0	287	160.2	310	173.1
North Western	296	248.7	275	231.6	283	238.3
Central West	292	163.3	271	151.2	296	165.1
South Eastern	288	145.1	328	163.6	339	169.1
Murrumbidgee	309	202.1	226	147.6	230	150.2
Murray	315	275.8	247	215.4	263	229.4
Far West	62	259.7	59	249.1	44	185.8
New South Wales*	5,519	82.6	5,199	77.2	5,874	87.3

* The total for New South Wales includes 4 recorded incidents in 2003 and 2 recorded incidents in 2004 where the offence occurred in a custodial institution.

TABLE 4.32 RECORDED CRIMINAL INCIDENTS, 2003 TO 2005: STATISTICAL DIVISION**BREACH APPREHENDED VIOLENCE ORDER**

<i>Statistical Division where offence occurred</i>	<i>Recorded criminal incidents</i>					
	<i>2003</i>		<i>2004</i>		<i>2005</i>	
	<i>Number</i>	<i>Rate per 100,000 population</i>	<i>Number</i>	<i>Rate per 100,000 population</i>	<i>Number</i>	<i>Rate per 100,000 population</i>
Sydney	5,687	135.5	5,736	135.5	5,083	120.1
Inner Sydney	568	185.8	693	223.0	526	169.2
Eastern Suburbs	313	129.6	242	100.2	237	98.1
St George-Sutherland	461	105.3	499	113.3	382	86.7
Canterbury-Bankstown	297	95.8	275	88.6	223	71.8
Fairfield-Liverpool	542	153.2	491	138.1	454	127.7
Outer South Western Sydney	629	262.4	708	293.9	632	262.3
Inner Western Sydney	150	90.4	143	84.8	99	58.7
Central Western Sydney	432	143.8	483	158.3	383	125.5
Outer Western Sydney	515	161.4	477	149.9	503	158.1
Blacktown	542	198.5	502	180.2	507	182.0
Lower Northern Sydney	184	62.0	180	60.2	134	44.8
Central Northern Sydney	204	48.7	199	47.0	188	44.4
Northern Beaches	205	87.9	190	81.0	169	72.0
Gosford-Wyong	645	213.1	654	214.7	646	212.1
Hunter	1,674	279.2	1,483	245.4	1,555	257.3
Illawarra	1,127	276.4	1,082	263.8	1,073	261.6
Richmond-Tweed	502	226.7	498	222.4	553	247.0
Mid-North Coast	700	243.3	728	249.4	636	217.9
Northern	541	301.2	470	262.4	562	313.8
North Western	569	478.1	480	404.3	498	419.4
Central West	454	253.9	554	309.1	480	267.8
South Eastern	487	245.4	470	234.4	451	224.9
Murrumbidgee	517	338.1	406	265.1	454	296.5
Murray	262	229.4	243	212.0	241	210.2
Far West	199	833.4	115	485.5	85	358.9
New South Wales*	12,726	190.5	12,276	182.4	11,678	173.5

* The total for New South Wales includes 7 recorded incidents in 2003, 11 recorded incidents in 2004 and 7 recorded incidents in 2005 where the offence occurred in a custodial institution.

TABLE 4.33 LEGAL ACTIONS COMMENCED, 2003 TO 2005: STATISTICAL DIVISION**DANGEROUS OR NEGLIGENT DRIVING[^]**

<i>Statistical Division where offence occurred</i>	<i>Legal actions commenced</i>					
	<i>2003</i>		<i>2004</i>		<i>2005</i>	
	<i>Number</i>	<i>Rate per 100,000 population</i>	<i>Number</i>	<i>Rate per 100,000 population</i>	<i>Number</i>	<i>Rate per 100,000 population</i>
Sydney	19,688	468.9	18,385	434.4	16,624	392.8
Inner Sydney	1,759	575.4	1,708	549.6	1,475	474.6
Eastern Suburbs	506	209.6	561	232.2	428	177.1
St George-Sutherland	1,556	355.3	1,483	336.7	1,507	342.1
Canterbury-Bankstown	1,471	474.7	1,174	378.1	995	320.5
Fairfield-Liverpool	1,919	542.3	1,761	495.3	1,534	431.4
Outer South Western Sydney	990	413.0	1,024	425.0	990	410.9
Inner Western Sydney	809	487.6	688	408.0	599	355.2
Central Western Sydney	1,522	506.5	1,491	488.7	1,250	409.7
Outer Western Sydney	1,828	572.7	1,744	548.1	1,534	482.1
Blacktown	1,536	562.5	1,482	532.1	1,255	450.6
Lower Northern Sydney	1,391	468.9	1,265	423.0	1,192	398.6
Central Northern Sydney	1,875	447.6	1,690	398.9	1,635	386.0
Northern Beaches	874	374.8	832	354.7	830	353.8
Gosford-Wyong	1,652	545.9	1,482	486.5	1,400	459.6
Hunter	2,812	469.0	2,736	452.8	2,556	423.0
Illawarra	1,672	410.0	1,538	375.0	1,480	360.8
Richmond-Tweed	1,325	598.2	1,265	565.0	1,191	532.0
Mid-North Coast	1,335	463.9	1,359	465.6	1,142	391.3
Northern	738	410.9	814	454.4	820	457.8
North Western	585	491.5	567	477.5	523	440.5
Central West	931	520.6	872	486.5	810	451.9
South Eastern	1,129	568.9	1,016	506.7	987	492.2
Murrumbidgee	671	438.9	701	457.7	628	410.1
Murray	569	498.1	571	498.1	579	505.0
Far West	90	376.9	96	405.3	121	510.9
New South Wales	31,545	472.1	29,920	444.5	27,461	408.0

[^] From 2003 driving offence data shows the number of legal actions commenced rather than the number of recorded criminal incidents. Comparable data is not available for years prior to 2003. (See Explanatory Notes, page vi).

TABLE 4.34 LEGAL ACTIONS COMMENCED, 2003 TO 2005: STATISTICAL DIVISIONEXCEEDING THE PRESCRIBED CONTENT OF ALCOHOL LIMIT[^]

<i>Statistical Division where offence occurred</i>	<i>Legal actions commenced</i>					
	<i>2003</i>		<i>2004</i>		<i>2005</i>	
	<i>Number</i>	<i>Rate per 100,000 population</i>	<i>Number</i>	<i>Rate per 100,000 population</i>	<i>Number</i>	<i>Rate per 100,000 population</i>
Sydney	14,310	340.8	14,231	336.3	14,333	338.7
Inner Sydney	1,850	605.2	1,780	572.7	1,825	587.2
Eastern Suburbs	795	329.3	841	348.1	893	369.6
St George-Sutherland	1,667	380.6	1,667	378.5	1,472	334.2
Canterbury-Bankstown	690	222.7	669	215.5	645	207.7
Fairfield-Liverpool	1,268	358.3	1,414	397.7	1,409	396.3
Outer South Western Sydney	831	346.7	695	288.5	768	318.8
Inner Western Sydney	496	298.9	422	250.3	438	259.8
Central Western Sydney	681	226.6	824	270.1	729	239.0
Outer Western Sydney	998	312.7	1,054	331.3	1,182	371.5
Blacktown	1,026	375.7	1,048	376.3	880	315.9
Lower Northern Sydney	818	275.7	864	288.9	874	292.3
Central Northern Sydney	744	177.6	753	177.8	986	232.8
Northern Beaches	1,163	498.7	1,009	430.1	858	365.7
Gosford-Wyong	1,283	424.0	1,191	391.0	1,374	451.1
Hunter	2,792	465.7	2,592	429.0	2,859	473.2
Illawarra	1,621	397.5	1,552	378.4	1,429	348.4
Richmond-Tweed	1,764	796.5	1,699	758.9	1,557	695.5
Mid-North Coast	1,394	484.4	1,207	413.5	1,242	425.5
Northern	944	525.6	808	451.1	863	481.8
North Western	705	592.4	675	568.5	681	573.6
Central West	766	428.3	676	377.2	731	407.9
South Eastern	1,289	649.5	1,203	599.9	1,353	674.7
Murrumbidgee	969	633.8	733	478.6	726	474.1
Murray	661	578.7	671	585.3	766	668.2
Far West	114	477.4	128	540.4	135	570.0
New South Wales	27,329	409.0	26,175	388.9	26,675	396.3

[^] From 2003 driving offence data shows the number of legal actions commenced rather than the number of recorded criminal incidents. Comparable data is not available for years prior to 2003. (See Explanatory Notes, page vi).

TABLE 4.35 LEGAL ACTIONS COMMENCED, 2003 TO 2005: STATISTICAL DIVISION**EXCEEDING LEGAL SPEED LIMIT[^]**

<i>Statistical Division where offence occurred</i>	<i>Legal actions commenced</i>					
	<i>2003</i>		<i>2004</i>		<i>2005</i>	
	<i>Number</i>	<i>Rate per 100,000 population</i>	<i>Number</i>	<i>Rate per 100,000 population</i>	<i>Number</i>	<i>Rate per 100,000 population</i>
Sydney	115,410	2,748.8	95,299	2,251.8	87,661	2,071.3
Inner Sydney	7,244	2,369.7	5,379	1,730.8	6,479	2,084.7
Eastern Suburbs	4,527	1,875.0	2,738	1,133.2	3,026	1,252.4
St George-Sutherland	9,268	2,116.3	8,885	2,017.2	11,379	2,583.4
Canterbury-Bankstown	6,578	2,122.8	5,030	1,620.1	4,388	1,413.3
Fairfield-Liverpool	8,497	2,401.2	7,393	2,079.2	6,983	1,963.9
Outer South Western Sydney	8,852	3,692.7	6,544	2,716.2	6,150	2,552.7
Inner Western Sydney	5,761	3,472.0	3,588	2,127.9	3,306	1,960.6
Central Western Sydney	13,017	4,332.3	9,863	3,232.9	6,468	2,120.1
Outer Western Sydney	11,366	3,561.0	9,316	2,928.1	7,894	2,481.1
Blacktown	9,273	3,395.7	7,020	2,520.4	6,099	2,189.7
Lower Northern Sydney	6,052	2,040.1	5,986	2,001.8	5,263	1,760.0
Central Northern Sydney	11,493	2,743.4	9,926	2,343.2	8,621	2,035.1
Northern Beaches	3,317	1,422.5	3,229	1,376.5	3,071	1,309.1
Gosford-Wyong	10,165	3,359.1	10,402	3,414.9	8,534	2,801.7
Hunter	28,650	4,778.4	25,177	4,166.7	25,991	4,301.4
Illawarra	14,687	3,601.8	15,184	3,702.1	12,534	3,056.0
Richmond-Tweed	9,321	4,208.5	9,362	4,181.8	7,158	3,197.3
Mid-North Coast	17,819	6,192.5	18,018	6,173.4	15,552	5,328.5
Northern	12,546	6,985.3	11,382	6,354.4	9,846	5,496.8
North Western	6,248	5,249.7	4,535	3,819.5	4,809	4,050.3
Central West	10,414	5,823.1	7,651	4,268.8	8,367	4,668.3
South Eastern	27,260	13,735.4	24,428	12,181.7	22,056	10,998.9
Murrumbidgee	13,543	8,857.7	10,407	6,795.6	9,290	6,066.2
Murray	12,253	10,726.6	11,958	10,430.6	8,710	7,597.4
Far West	620	2,596.5	517	2,182.7	315	1,329.9
New South Wales	268,771	4,022.3	233,918	3,475.1	212,289	3,153.8

[^] From 2003 driving offence data shows the number of legal actions commenced rather than the number of recorded criminal incidents. Comparable data is not available for years prior to 2003. (See Explanatory Notes, page vi).

APPENDICES

APPENDIX 1

<i>Classification</i>	<i>Offences included</i>
Homicide:	
Murder	Murder – actual
Attempted murder	Murder – attempted Shoot with intent to murder
Murder accessory, conspiracy	Murder accessory Murder conspiracy
Manslaughter – not driving	Manslaughter
Driving causing death	Culpable driving causing death Culpable navigation causing death Manslaughter
Assault	Actual bodily harm Grievous bodily harm (including malicious wounding) Assault officer Common assault Shoot with intent other than to murder
Sexual offences:	
Sexual assault	Sexual assault Aggravated sexual assault Assault with intent to have sexual intercourse
Indecent assault, act of indecency	Indecent assault Aggravated indecent assault Act of indecency Aggravated act of indecency
Other sexual offences	Incest Carnal knowledge Wilful and obscene exposure Indecent communication Peep or pry Bestiality Other sexual offence
Abduction and kidnapping	Abduction / kidnapping
Robbery:	
Robbery without a weapon [^]	<i>Includes any of the following offences in which no weapon was recorded:</i> Robbery Robbery with aggravation Demand money with menaces Robbery with wounding Other robbery

[^] The composition of this offence category was changed in the 2004 report and cannot be compared with reports published prior to 2004.

APPENDIX 1 continued

<i>Classification</i>	<i>Offences included</i>
Robbery with a firearm [^]	<p><i>Includes any of the following offences in which a firearm was recorded as a weapon:</i></p> Robbery Armed robbery Robbery with aggravation Demand money with menaces Robbery with wounding Other robbery
Robbery with a weapon not a firearm [^]	<p><i>Armed robbery where a firearm was not recorded as a weapon or any of the following offences in which a weapon other than a firearm was recorded</i></p> Robbery Robbery with aggravation Robbery with wounding Demand money with menaces Other robbery
Blackmail and extortion	Extortion / blackmail
Harassment, threatening behaviour and private nuisance*	Intimidation (<i>includes threatening behaviour stalking</i>) Telecommunications offence (<i>includes nuisance phone calls</i>)
Other offences against the person[^]	Malicious damage intent injure / endanger Negligent act cause grievous bodily harm Other offence against the person
Theft:	
Break and enter – dwelling	<p><i>Dwelling includes premises where people reside such as house, home unit, caravan, tent as well as any attachment such as garage, shed, yard and garden.</i></p> Break, enter and steal Break, enter intent to steal Break, enter and commit other felony Break, enter, intent to commit other felony
Break and enter – non-dwelling	<p><i>Non-dwelling includes commercial and government premises.</i></p> Break, enter and steal Break, enter intent to steal Break, enter and commit other felony Break, enter and intent to commit other felony
Receiving or handling stolen goods*	Receiving Goods in custody Possess property stolen outside NSW
Motor vehicle theft	Theft of motor cars, motor cycles, and other vehicles
Steal from motor vehicle	Steal from motor vehicle

[^] The composition of this offence category was changed in the 2004 report and cannot be compared with reports published prior to 2004.

* This offence category was first introduced in the 2004 report.

APPENDIX 1 continued

<i>Classification</i>	<i>Offences included</i>
Steal from retail store	Steal from retail store
Steal from dwelling	Steal from dwelling Other stealing <i>occurring in a residential dwelling</i>
Steal from person	Steal from person
Stock theft	Steal stock (animal)
Fraud	Larceny clerk / servant / bailee Make / use false instrument Embezzlement Fraudulent misappropriation Company / corporate offence Deception offence Possess false instrument Publish false misleading statement Corrupt commission / practices Counterfeit currency Other fraud
Other theft	Steal from marine vessel Steal vessel Other stealing <i>occurring somewhere other than a residential dwelling</i>
Arson	Malicious damage by fire Destroy by fire – financial gain Destroy by fire – intent injure
Malicious damage to property	Malicious damage to property Graffiti Public place – damage fountain / wall etc. Public place – damage shrine / monument
Drug offences:	
Possession and / or use of cocaine	Possess drug <i>where drug type is cocaine</i> Use or administer drug <i>where drug type is cocaine</i>
Possession and / or use of narcotics	Possess drug <i>where drug type is narcotics</i> Use or administer drug <i>where drug type is narcotics</i>
Possession and / or use of cannabis	Possess drug / plant <i>where drug type is cannabis</i> Use or administer drug <i>where drug type is cannabis</i>
Possession and / or use of amphetamines*	Possess drug <i>where drug type is amphetamines</i> Use or administer drug <i>where drug type is amphetamines</i>
Possession and / or use of ecstasy*	Possess drug <i>where drug type is ecstasy</i> Use or administer drug <i>where drug type is ecstasy</i>

* This offence category was first introduced in the 2004 report.

APPENDIX 1 continued

<i>Classification</i>	<i>Offences included</i>
Possession and / or use of other drugs [^]	Possess drug <i>where drug type is not cocaine, narcotics, cannabis, amphetamines or ecstasy</i> Use or administer drug <i>where drug type is not cocaine, narcotics, cannabis, amphetamines or ecstasy</i>
Dealing, trafficking in cocaine	Supply drug <i>where drug type is cocaine</i>
Dealing, trafficking in narcotics	Supply drug <i>where drug type is narcotics</i>
Dealing, trafficking in cannabis	Supply drug / plant <i>where drug type is cannabis</i>
Dealing, trafficking in amphetamines*	Supply drug <i>where drug type is amphetamines</i>
Dealing, trafficking in ecstasy*	Supply drug <i>where drug type is ecstasy</i>
Dealing, trafficking in other drugs [^]	Supply drug <i>where drug type is not cocaine, narcotics, cannabis, amphetamines or ecstasy</i>
Cultivating cannabis	Cultivate cannabis plant Hydroponics / cultivate Plantation
Manufacture drug*	Manufacture drug
Importing drugs	Import drug / plant
Other drug offences [^]	Forge and / or utter prescription Possess drug utensil Other drug detection / seizure offence
Prohibited and regulated weapons offences[^]	Possess whilst unlicensed Possess shortened firearm Possess prohibited weapon / article Shorten firearm Firearms, dealer offence Unlawfully discharge firearm Trespass with firearm Use firearm under influence Discharge firearm into premises Other firearm offence Other firearm licensing offence Firearms, not ensure safekeeping Use prohibited weapon / article Sell prohibited weapon / article Other prohibited weapon / article offence Bomb hoax or threat Possess explosive / dangerous article Search knife / implement found Item / object / weapon found

[^] The composition of this offence category was changed in the 2004 report and cannot be compared with reports published prior to 2004.

* This offence category was first introduced in the 2004 report.

APPENDIX 1 continued

<i>Classification</i>	<i>Offences included</i>
Disorderly conduct:	
Trespass*	Trespass Remain in closed lands
Offensive conduct	Offensive conduct
Offensive language	Offensive language
Criminal intent*	Enter land with intent Armed with intent Disguised with intent Intent to repeat indictable offence Possess implements
Betting and gaming offences	Own / manage premises – gaming Own / manage premises – betting Conduct / play illegal game Other gaming offence
Liquor offences*	Consume alcohol in public by minor Consume alcohol in alcohol-free zone Liquor Act offence – Supply liquor to juvenile Liquor Act offence by minor, customer, employee or licensee Registered Clubs Act offence by minor, customer, employee, secretary or club
Pornography offences*	Possess / publish indecent material Child pornography
Prostitution offences[^]	Soliciting / prostitution in public Prostitution – premises Prostitution – live off earnings Consorting Child prostitution Other vice offence
Against justice procedures:	
Escape Custody*	Escapee – Corrective Services custody Escapee – Police custody Escapee – Other custody
Breach Apprehended Violence Order	Breach Apprehended Violence Order – domestic Breach Apprehended Violence Order – personal
Breach bail conditions	Breach bail conditions
Fail to appear	Fail to appear
Resist or hinder officer*	Resist officer Hinder officer Refuse to be searched Refuse to produce object Refuse direction drug related Refuse direction not drug related

[^] The composition of this offence category was changed in the 2004 report and cannot be compared with reports published prior to 2004.

* This offence category was first introduced in the 2004 report.

APPENDIX 1 continued

<i>Classification</i>	<i>Offences included</i>
Other offences against justice procedures [^]	Accessory after the fact Other judicial offence Breach of recognizance
Driving offences: Drive under influence of alcohol or drug Dangerous or negligent driving Driving licence cancelled or suspended Driving without a licence Driving licence offences Registration offences Road worthiness offences Exceeding the prescribed content of alcohol Exceeding legal speed limit Parking offences Other regulatory driving offences	<i>Detailed information on driving incidents is not recorded on COPS. The driving statistics in this report represent legal actions commenced by police including referrals to court and infringement notices rather than recorded incidents. Offences are determined by matching lawpart codes to the driving classifications used in the Australian Standard Offence Classification (ABS Cat. No. 1234.0).</i>
Transport regulatory offences*	Transport offence (<i>includes offences on the rail network such as travelling without a valid ticket, smoking, drinking or using offensive language on a train or railway land</i>)
Other offences[^]	Immigration / customs offence Animals – dog offences Family law offence Unlawful assembly Obstruction Violent disorder Riot and affray Custody of offensive implement Carry cutting weapon Public mischief Offence against transport service Other street offences Other miscellaneous offences Offences under various acts: Acts administered by the Waterways Authority of NSW <i>Australian Postal Corporation Act 1989 (Cwlth)</i> <i>Children and Young Persons (Care and Protection) Act 1998 (NSW)</i> <i>Children (Care and Protection) Act 1987 (NSW)</i> <i>Companion Animals Act 1998 (NSW)</i> <i>Family Law Act 1975 (Cwlth)</i> <i>Local Government Act 1993 (NSW)</i> <i>Pawnbrokers and Second-hand Dealers Act 1997 (NSW)</i> <i>Prevention of Cruelty to Animals Act 1979 (NSW)</i> <i>Rural Fires Act 1997 (NSW)</i> <i>Security Industry Act 1997 (NSW)</i>

[^] The composition of this offence category was changed in the 2004 report and cannot be compared with reports published prior to 2004.

* This offence category was first introduced in the 2004 report.

APPENDIX 2

Map 1: New South Wales Statistical Division boundaries



APPENDIX 2 continued

Map 2: Sydney Statistical Subdivision boundaries



APPENDIX 3

LOCAL GOVERNMENT AREAS IN STATISTICAL DIVISIONS

Sydney Statistical Subdivisions

Inner Sydney #

Botany Bay
Leichhardt
Marrickville
Sydney

Outer South Western Sydney

Camden
Campbelltown
Wollondilly

Lower Northern Sydney

Hunters Hill
Lane Cove
Mosman
North Sydney
Ryde
Willoughby

Eastern Suburbs

Randwick
Waverley
Woollahra

Inner Western Sydney

Ashfield
Burwood
Canada Bay
Strathfield

Central Northern Sydney

Baulkham Hills
Hornsby
Ku-ring-gai

St George – Sutherland

Hurstville
Kogarah
Rockdale
Sutherland Shire

Central Western Sydney

Auburn
Holroyd
Parramatta

Northern Beaches

Manly
Pittwater
Warringah

Canterbury – Bankstown

Bankstown
Canterbury

Outer Western Sydney

Blue Mountains
Hawkesbury
Penrith

Gosford – Wyong

Gosford
Wyong

Fairfield – Liverpool

Fairfield
Liverpool

Blacktown

Blacktown

In reports prior to 2004 the Inner Sydney SSD included South Sydney LGA. However, South Sydney no longer appears as a separate LGA since the NSW Local Government Boundaries Commission included South Sydney LGA as part of the Sydney LGA in February 2004.

APPENDIX 3 continued

NSW Statistical Divisions

Hunter	Illawarra	Richmond – Tweed	Mid-North Coast
Cessnock	Kiama	Ballina	Bellingen
Dungog	Shellharbour	Byron	Clarence Valley
Gloucester	Shoalhaven	Kyogle	Coffs Harbour
Great Lakes	Wingecarribee	Lismore	Greater Taree
Lake Macquarie	Wollongong	Richmond Valley	Hastings
Maitland		Tweed	Kempsey
Merriwa			Lord Howe Island
Murrurundi			Nambucca
Muswellbrook			
Newcastle			
Port Stephens			
Scone			
Singleton			
Northern	North Western	Central West	South Eastern
Armidale Dumaresq	Bogan	Bathurst	Bega Valley
Barraba	Bourke	Bland	Bombala
Bingara	Brewarrina	Blayney	Boorowa
Glen Innes	Cobar	Cabonne	Cooma-Monaro
Gunnedah	Coolah	Cowra	Palerang
Guyra	Coonabarabran	Evans	Eurobodalla
Inverell	Coonamble	Forbes	Greater Argyle
Manilla	Dubbo	Lachlan	Greater Queanbeyan
Moree Plains	Gilgandra	Lithgow	Harden
Narrabri	Mudgee	Oberon	Snowy River
Nundle	Narromine	Orange	Upper Lachlan
Parry	Walgett	Parkes	Yass Valley
Quirindi	Warren	Rylstone	Young
Severn	Wellington	Weddin	
Tamworth			
Tenterfield			
Uralla			
Walcha			
Yallaroi			
Murrumbidgee	Murray	Far West	
Carrathool	Albury	Broken Hill	
Coolamon	Balranald	Central Darling	
Cootamundra	Berrigan	Unincorporated Far West	
Griffith	Conargo		
Gundagai	Corowa		
Hay	Culcairn		
Junee	Deniliquin		
Leeton	Holbrook		
Lockhart	Hume		
Murrumbidgee	Jerilderie		
Narrandera	Murray		
Temora	Tumbarumba		
Tumut	Urana		
Wagga Wagga	Wakool		
	Wentworth		

