
**NEW SOUTH WALES
RECORDED CRIME STATISTICS
1999**

Peter Doak

NSW BUREAU OF CRIME STATISTICS AND RESEARCH

ACKNOWLEDGEMENTS

The production of this report was greatly assisted by officers within the NSW Police Service. Special thanks are due to officers in the Information Technology Branch and in the Planning and Evaluation Section of the Audit and Evaluation Branch.

Several officers within the Bureau also made important contributions. In particular, Mark Ramsay and Pat Evans were responsible for the programming and table production and Jonathan Nichol carried out the desktop publishing.

2000

Published by the NSW Bureau of Crime Statistics and Research
Attorney General's Department
Level 8
St James Centre
111 Elizabeth Street
Sydney
www.lawlink.nsw.gov.au/bocsar/

ISSN 1035-9044

INTRODUCTION

This report presents data on crimes reported to or detected by NSW police from January 1997 to December 1999. The data were extracted from the Computerised Operational Policing System (COPS) of the NSW Police Service in January 2000.

The report includes an overview of trends over the most recent two-year period for a selection of serious offence categories. The overview in this year's report indicates that there are now no significant upward trends in recorded crime for these selected offence categories. Furthermore, seven of the sixteen major offence categories are now trending downwards. This compares favourably with the trends reported in recent years.

Between 1998 and 1999, substantial decreases were recorded in the numbers of recorded incidents of sexual assault, armed robbery, break and enter offences and motor vehicle theft in NSW. Some of these decreases were foreshadowed in last year's report, which showed a general pattern of improvement in crime trends. The regional information in Section 3 of this report, however, shows that while this pattern of improvement is widespread across NSW, there are still some regions experiencing increases in the numbers of recorded offences, particularly for non-violent property crimes.

Dr Don Weatherburn

Director

March 2000

CONTENTS

Definitions and explanatory notes	vi
OVERVIEW OF MAJOR TRENDS	1
Figure 1 Murder	5
Figure 2 Assault	6
Figure 3 Sexual assault and indecent assault, act of indecency, other sexual offences	7
Figure 4 Robbery with and without a weapon	8
Figure 5 Break and enter – dwelling and non-dwelling	9
Figure 6 Motor vehicle theft and steal from motor vehicle	10
Figure 7 Steal from retail store, from dwelling and from person	11
Figure 8 Fraud	12
Figure 9 Malicious damage to property	13
MONTHLY TRENDS IN RECORDED CRIMINAL INCIDENTS, 1997, 1998 AND 1999, NEW SOUTH WALES	15
Table 1.1 Monthly trends in recorded criminal incidents, 1997 New South Wales: Type of offence	16
Table 1.2 Monthly trends in recorded criminal incidents, 1998 New South Wales: Type of offence	20
Table 1.3 Monthly trends in recorded criminal incidents, 1999 New South Wales: Type of offence	24
CLEARED CRIMINAL INCIDENTS FOR SELECTED OFFENCES, JANUARY 1997 TO SEPTEMBER 1999, NEW SOUTH WALES	29
Table 2.1 Cleared criminal incidents, selected offences, January 1997 to December 1997, New South Wales: Type of offence	30
Table 2.2 Cleared criminal incidents, selected offences, January 1998 to December 1998, New South Wales: Type of offence	31
Table 2.3 Cleared criminal incidents, selected offences, January 1999 to September 1999, New South Wales: Type of offence	32
RECORDED CRIME STATISTICS IN NEW SOUTH WALES REGIONS FOR SELECTED OFFENCES, 1997, 1998 AND 1999	33
Table 3.1 Murder	35
Table 3.2 Assault	36
Table 3.3 Sexual assault	37

CONTENTS continued

Table 3.4	Indecent assault, act of indecency, other sexual offences	38
Table 3.5	Robbery without a weapon	39
Table 3.6	Robbery with a firearm	40
Table 3.7	Robbery with a weapon not a firearm	41
Table 3.8	Break and enter – dwelling	42
Table 3.9	Break and enter – non-dwelling	43
Table 3.10	Receiving, goods in custody	44
Table 3.11	Motor vehicle theft	45
Table 3.12	Steal from motor vehicle	46
Table 3.13	Steal from retail store	47
Table 3.14	Steal from dwelling	48
Table 3.15	Steal from person.	49
Table 3.16	Fraud	50
Table 3.17	Malicious damage to property	51
Table 3.18	Possession and/or use of cocaine	52
Table 3.19	Possession and/or use of narcotics	53
Table 3.20	Possession and/or use of cannabis	54
Table 3.21	Dealing, trafficking in cocaine	55
Table 3.22	Dealing, trafficking in narcotics	56
Table 3.23	Dealing, trafficking in cannabis	57
Table 3.24	Cultivating cannabis	58
Table 3.25	Offensive conduct	59
Table 3.26	Offensive language	60
Table 3.27	Breach Apprehended Violence Order	61
Table 3.28	PCA driving offences	62
Table 3.29	Drive while disqualified	63
Table 3.30	Drive manner/speed dangerous	64
APPENDICES	65
Appendix 1	Offences included in classifications	67
Appendix 2	Maps	72
Appendix 3	Local Government Areas in Statistical Divisions	74

DEFINITIONS AND EXPLANATORY NOTES

The data in this report are extracted from the NSW Police Service's Computerised Operational Policing System (COPS). This system is used for record-keeping for all police operations, not just for criminal matters.

Prior to April 1994, the NSW Police Service used a different system for recording criminal offences. Recorded crime statistics for NSW for periods prior to April 1994 are not comparable with those for more recent periods. In this report:

- the counting units are recorded *criminal incidents* (except for murder and manslaughter where the counting units are victims) rather than recorded *offences*; and
- the data are categorised by date of *reporting* to police (or date of detection by police) rather than date of *occurrence* of the offence.

RECORDED CRIMINAL INCIDENTS

A *criminal incident* is defined as an activity detected by or reported to police which:

- involved the same offender(s);
- involved the same victim(s);
- occurred at the one location;
- occurred during one uninterrupted period of time;
- falls into one offence category;
- falls into one incident type (for example, 'actual', 'attempted', 'conspiracy').

One incident may involve two offenders assaulting the same victim. This would be recorded as one assault incident. Alternatively, suppose a man reports to police that his neighbour demanded money from him, then assaulted him when he did not comply. For such an event, two criminal incidents are recorded because two distinct offence types are involved (demand money with menaces and assault) even though the same parties were involved at the same time and in the same place.

RECORDED VICTIMS

For murder and manslaughter only, the counting units used are victims. Under the definition of a criminal incident (same parties, same time, same place, same offence and same incident type) one murder or manslaughter incident could involve two or more persons being killed. Because of the seriousness of these offences and their relatively small numbers, it was considered to be more appropriate to count the number of victims, rather than the number of criminal incidents. Hence, where *one* murder incident involves a person killing six people, *six* murder victims are counted.

OFFENCE CATEGORIES

The classification of offences in this report is based on the Australian National Classification of Offences (ANCO) issued by the Australian Bureau of Statistics (ABS, 1985, Cat. No. 1234.0).

For all *type of offence* classifications used in the report, Appendix 1 lists the offence categories included in the classification. The offence categories are those used by the NSW Police Service and do not necessarily correspond exactly with offences defined in legislation.

COUNTING PERIOD

Criminal incidents are included in the counting period in which they were reported to or detected by police.

In most cases criminal incidents are recorded on COPS on the day of reporting. Because the reporting date and recording date may differ, it is possible for some updating of data to occur. That is, data extracted for a specified period of time (incidents reported in 1998, for example), may differ according to the date of extraction of the data.

CLEARED CRIMINAL INCIDENTS

A cleared criminal incident is one which, in the view of police, has been satisfactorily cleared by charge or otherwise.

An incident is cleared by charge when police have laid a charge or an information against at least one person. The information may have been laid with a view to the issuing of a warrant, summons or other process for the purpose of bringing an offender before the court.

A criminal incident is cleared other than by charge when, under normal circumstances, a charge or information would have been laid against at least one person, but, for a variety of reasons, police have been unable to make an arrest, despite knowing the identity of the offender and having sufficient evidence to support a charge. Examples of situations in which an offence may be cleared other than by charge include the following:

- the offender is a juvenile and is cautioned;
- the offender has died before a charge is made or information laid;
- the offender has been committed to a psychiatric institution and is unlikely to be released;
- there is an obstacle to charging, such as diplomatic immunity;
- the complainant or essential witness is dead and proceedings would be aborted;
- the offender is serving a sentence and police consider that no useful purpose would be served by prosecution.

REGIONAL STATISTICS

Statistics are provided on the number of criminal incidents (victims for murder) recorded for each of the Statistical Divisions of NSW as defined by the Australian Bureau of Statistics. Within the Sydney Statistical Division, statistics are provided for Statistical Subdivisions. Recorded criminal incidents which occurred in correctional, detention or remand centres, however, are not counted in the Statistical Division in which the incident occurred. Numbers of such incidents are noted at the foot of each table. Appendix 2 provides maps indicating the location of each Statistical Division and Sydney Statistical Subdivision. Appendix 3 lists the Local Government Areas within each of the Statistical Divisions and Statistical Subdivisions. A criminal incident is counted within a particular region when the location of the offence falls within that region.

For the rate calculations, population data were obtained from the Australian Bureau of Statistics publications: *Population, New South Wales, 30 June 1998*, Cat. No. 3234.1 (for 1997 population estimates), and *Population, New South Wales, 30 June 1999*, Cat. No. 3234.1 (for 1998 and 1999 population estimates).

ORGANISATION OF THE REPORT

The report is organised into four main sections as follows. First, there is an overview of major trends in recorded criminal incidents (recorded victims for murder) over the two-year period from January 1998 to December 1999. Figures showing trends in selected offences are presented, as well as an analysis indicating which trends are statistically significant.

The second section presents, for all categories of offence, the monthly numbers of recorded criminal incidents (recorded victims for murder and manslaughter). There are three tables in this section, one each for 1997, 1998 and 1999. Each table provides a total for the year and the annual rate per 100,000 population. The data used for the trend analysis in the first section of the report are included in these tables. Note, however, that the trend analysis uses only the most recent two years of data.

The third section provides the numbers and percentages of cleared criminal incidents, for selected types of offence, for 1997, 1998 and 1999. The offence types included in these tables are those where the crime is likely to have been reported to police, rather than discovered or detected by police. Offence types where the numbers of recorded criminal incidents are influenced by police law enforcement activity (drug offences, for example) are excluded. For such offence types the clear-up percentages are very high because clearing the offence generally occurs simultaneously with its detection (that is, an arrest is made when the crime is discovered).

The tables for 1997 and 1998 show the number of recorded criminal incidents and, of these, the number which had been cleared 30 days, 90 days and 180 days after the incident was reported to police. The tables also include clear-up percentages, which show the proportions of recorded incidents which had been cleared within 30, 90 and 180 days of reporting. The table for 1999 is similar to those for 1996 and 1998 except that there are only two follow-up periods, 30 days and 90 days. Because the data for this report were extracted in January 2000, the clear-up status after 90 days could not be determined for any offences reported in the last three months of 1999. Hence, the clear-up data for 1999 are for the first nine months of the year only.

In the fourth section of the report there are 30 tables, one for each major offence category. Each table gives the numbers and rates (per 100,000 population) of recorded criminal incidents (for murder, recorded victims) for the periods January to December 1997, January to December 1998 and January to December 1999, for each of the NSW Statistical Divisions and for each Statistical Subdivision in Sydney. Recorded criminal incidents which occurred in custodial institutions are counted separately; they are not included in the data for the Statistical Division where the custodial institution is located. Note that both the numbers and rates of recorded criminal incidents in 1998 have been updated since the previous edition.

OVERVIEW OF MAJOR TRENDS

OVERVIEW OF MAJOR TRENDS

TRENDS IN RECORDED CRIME

However trends in recorded crime are presented, their interpretation is a difficult task. The recorded criminal incident data presented in this report are based on information derived from the NSW Police Service Computerised Operational Policing System, so only those incidents which are reported to, or detected by, police are included. The trends in recorded crime shown in this report will, therefore, reflect movements in the underlying factors which influence the detection, reporting and recording of crime, as well as changes in the true level of crime in the community.

An alternative measure of the level of crime in NSW is available from crime victim surveys, for example the *Crime and Safety Survey* which is conducted annually by the Australian Bureau of Statistics (ABS).¹ As well as providing an estimate of the victimisation rate in the community for a selected set of offences, this survey measures the proportion of crimes which are not reported to police, and are therefore not recorded in the official statistics. In particular, personal crimes, such as assault and robbery, are less likely to be reported than crimes which involve households. For example, *Crime and Safety, New South Wales, 1999* shows that, in the twelve-month period to April 1999, while more than 95 per cent of motor vehicle thefts and almost 74 per cent of break and enter offences (crimes against 'households') were reported to police, only 34 per cent of all alleged assault offences and less than 13 per cent of sexual assault offences were reported during that period.² Given that some offences have low reporting rates, it is possible that changes in recorded crime rates over time for these offences largely reflect changes in reporting rates.

Public willingness to report crime, however, is just one of the extraneous factors which can affect trends in recorded crime. Shifts in policing policy can also have a marked effect on the number of recorded drug offences, drink driving offences, cases of offensive behaviour or of receiving stolen goods. For these offences, therefore, recorded rates probably do not accurately reflect actual rates. For this reason, the more detailed comparisons of crime rates and examination of trends in this document are restricted to categories of offence which are reported to, rather than detected by, police.

The interpretation of trends in official reports of crime can be considerably more difficult than the interpretation of trends in unemployment or inflation statistics. The ease with which recorded crime statistics can be misunderstood creates a temptation to offer an authoritative explanation for each major crime trend. Indeed, in many instances it is simply impossible to state with any assurance why a particular trend has appeared. This report, therefore, confines itself to identifying and describing trends in recorded crime, rather than explaining them.

The trends examined in this overview cover a twenty-four month period, from January 1998 to December 1999. For comparative purposes, statistics for 1997 have been included in the detailed tables in the sections which follow. For some offence categories, separate trends have been presented for various offence subcategories; in particular, sexual offences, robbery, break and enter, and stealing offences have been further disaggregated.

For each offence category or subcategory except murder, a statistical test for trend was applied to the monthly numbers of recorded criminal incidents over the twenty-four month period from January 1998 to December 1999.³ In the case of murder, the statistical test for trend was applied to the monthly numbers of victims over the same period. For those offences where a statistically significant trend was found, the extent of the trend is indicated by the percentage change between the total recorded number of incidents for the twelve months of January to December 1998 and the total recorded number of incidents for the same period in 1999.

SUMMARY OF TRENDS

In the following summary the bracketed figures denote the percentage change in the total number of recorded criminal incidents between the consecutive twelve-month periods January to December 1998 and January to December 1999.

Significant downward trends

There was a statistically significant downward trend in the monthly numbers of recorded criminal incidents for the following offences:

- sexual assault (down by 10.2%; see Figure 3)
- indecent assault, act of indecency and other sexual offences (down by 15.6%; see Figure 3)
- robbery with a firearm (down by 24.3%; see Figure 4)
- robbery with a weapon not a firearm (down by 19.8%; see Figure 4)
- break and enter – dwelling (down by 10.0%; see Figure 5)
- break and enter – non-dwelling (down by 6.6%; see Figure 5)
- motor vehicle theft (down by 10.5%; see Figure 6).

Offences where there was no upward or downward trend

There was no statistically significant generally upward or downward trend in the monthly numbers of recorded criminal incidents⁴ for any of the following offences:

- murder (see Figure 1)
- assault (see Figure 2)
- robbery without a weapon (see Figure 4)
- steal from motor vehicle (see Figure 6)
- steal from retail store (see Figure 7)
- steal from dwelling (see Figure 7)
- steal from person (see Figure 7)
- fraud (see Figure 8)
- malicious damage to property (see Figure 9).

Significant upward trends

There were no offences for which there was a statistically significant upward trend in the monthly numbers of recorded criminal incidents.

DESCRIPTION OF TRENDS

The discussion which follows includes comparisons of recorded crime rates, for a selected set of offences, between Statistical Divisions of NSW. In addition, within the Sydney Statistical Division, recorded crime rates are detailed by Statistical Subdivision. The rate calculations are based on resident population data and are calculated as recorded offences per 100,000 population in each Statistical Division or Subdivision.⁵ It should be noted that the Inner Sydney Statistical Subdivision has high recorded crime rates because, compared with other regions, the resident population is small relative to the 'transient' or non-resident population which uses the area for business, entertainment, shopping, etc. That is, the high transient population is not reflected in the rate calculation.

Murder

Figure 1 shows the recorded number of murder victims for each month from January 1998 to December 1999. There was no statistically significant upward or downward trend in the number of murder victims over this period. It is clear that, with such small numbers of victims, the month to month variation is extremely marked. For this reason it is difficult to detect trends over such a short period.

Figure 1: Murder

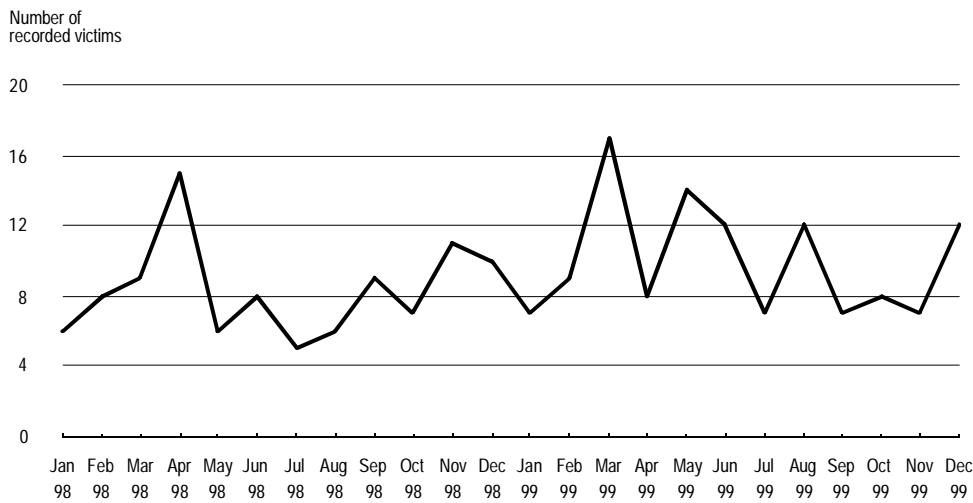


Table 3.1 shows the regional distribution for murder from January 1998 to December 1999. Because of the small numbers of murder victims, it is not sensible to make regional comparisons.

Assault

Figure 2 shows the recorded number of assault incidents between January 1998 and December 1999. There was no statistically significant upward or downward trend for assault over this period.

Figure 2: Assault

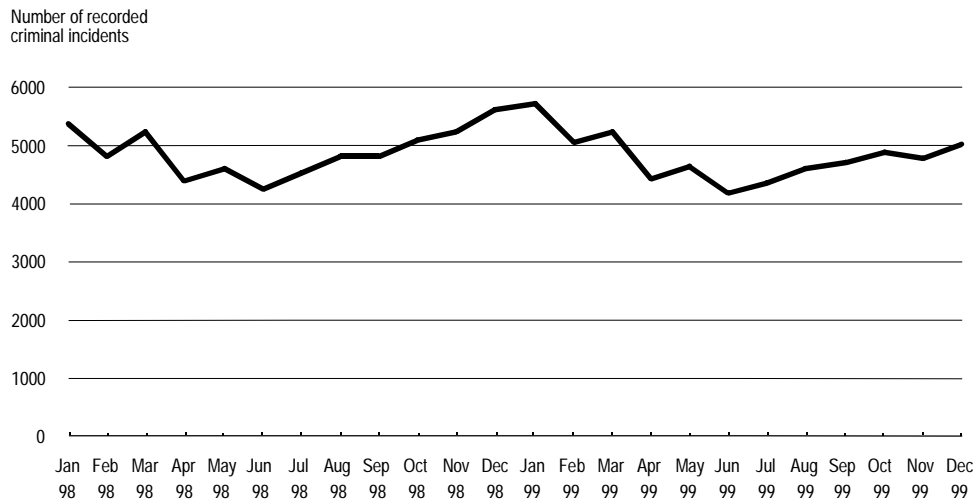


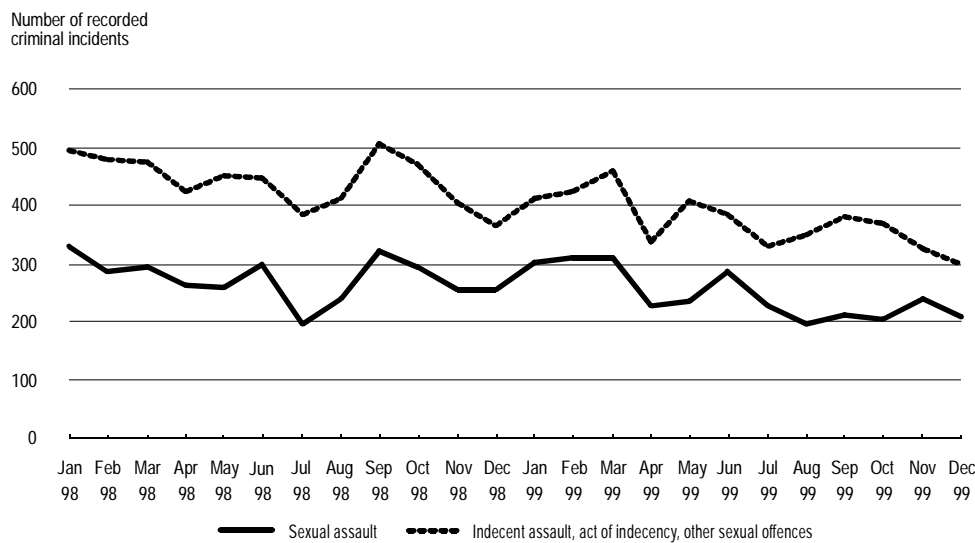
Table 3.2 shows that from January to December 1999, the highest rate of assault in NSW was recorded in the Far West Statistical Division (2,610.8 incidents per 100,000 population). There were also high rates of assault recorded in the North Western Statistical Division (2,012.1 per 100,000) and in the Inner Sydney Statistical Subdivision (2,007.4 per 100,000). The rate in each of the above three regions was more than double the rate for NSW (897.7 per 100,000).

Of the regions detailed in Table 3.2, the lowest rates of assault were in geographical regions within the Sydney Statistical Division. In 1999, the Hornsby-Ku-ring-gai Statistical Subdivision recorded the lowest rate of assault (221.5 per 100,000), followed by the Lower Northern Sydney Statistical Subdivision (390.0 per 100,000). Each of these rates was less than half of the average NSW rate.

Sexual offences

For the period from January 1998 to December 1999, Figure 3 presents the number of recorded incidents of sexual offences separately for sexual assault and for indecent assault, act of indecency and other sexual offences. There were statistically significant downward trends in each series over this period, with a 10.2 per cent decrease in the recorded rate of sexual assault between 1998 and 1999, and a 15.6 per cent decrease in the recorded rate of indecent assault, act of indecency and other sexual offences.

Figure 3: Sexual assault and indecent assault, act of indecency, other sexual offences



Inspection of Table 3.3 shows that the highest rate of sexual assault from January to December 1999 was recorded in the Far West Statistical Division (127.9 incidents per 100,000 population), followed by the Murrumbidgee Statistical Division of NSW (80.6 per 100,000). The highest rate in the Sydney Statistical Division was recorded in the Inner Sydney Statistical Subdivision (70.1 per 100,000).

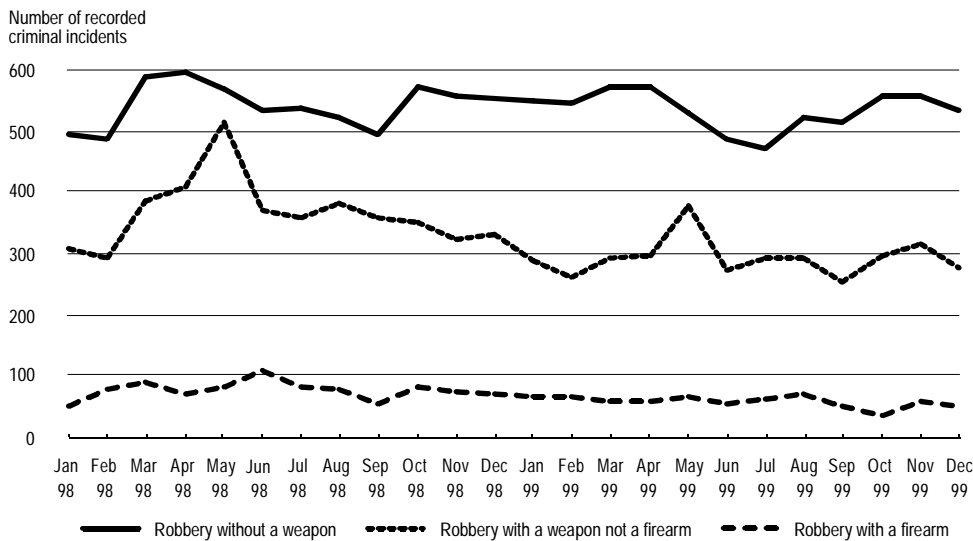
The lowest rates of sexual assault during 1999 were recorded in the areas within the Sydney Statistical Division which had also recorded lower than average rates of non-sexual assault during 1999. In 1999, Hornsby-Ku-ring-gai recorded the lowest rate of sexual assault (18.3 per 100,000), followed by the Northern Beaches Statistical Subdivision (22.8 per 100,000). Each of these rates is less than half of the average NSW rate of 46.1 recorded incidents per 100,000 resident population. Note that between 1998 and 1999, the statewide decrease in the rate of sexual assault was widespread across NSW with most geographical regions recording a marked decrease in the rate of this offence over this time period.

Table 3.4 shows that for 1999 the highest rate of indecent assault, act of indecency and other sexual offences was recorded in the Northern Statistical Division (130.3 per 100,000), followed by the North Western and the Far West Statistical Divisions of NSW (130.1 and 115.5 per 100,000 population, respectively). The overall rate for NSW in 1999 was 69.9 per 100,000 population, a fall of 16.6 per cent from the 1998 level. The lowest rates of indecent assault, act of indecency and other sexual offences were recorded in areas within the Sydney Statistical Division. Between 1998 and 1999, most geographical regions of NSW recorded a decrease in the rate of this offence.

Robbery

Figure 4 presents recorded numbers of robbery incidents separately for robbery without a weapon, robbery with a firearm and robbery with a weapon other than a firearm over the period January 1998 to December 1999. There was no statistically significant upward or downward trend for robbery without a weapon during this period. There was a statistically significant downward trend, however, in the number of recorded incidents of robbery with a firearm (down by 24.3% from 1998 to 1999) and robbery with a weapon other than a firearm (down by 19.8%).

Figure 4: Robbery with and without a weapon



Tables 3.5, 3.6 and 3.7 present the regional distribution of the recorded rates of each subcategory of robbery incident. These figures indicate that robbery offences in NSW are more likely to occur in the Sydney Statistical Division than elsewhere in NSW. For each robbery subcategory, the highest rate of recorded incidents in 1999 occurred in the Inner Sydney Statistical Subdivision.

Inner Sydney's rate for robbery without a weapon shown in Table 3.5 (592.1 recorded incidents per 100,000 population) was almost six times as high as the corresponding rate for the State (100.0 per 100,000). High rates of this offence were also recorded in the Canterbury–Bankstown and Central Western Sydney Statistical Subdivisions of Sydney (220.5 and 176.9 incidents per 100,000 population, respectively).

The lowest rates within NSW of robbery without a weapon were mostly recorded in country regions; in particular, the lowest rates for this offence in 1999 were recorded in the South Eastern and the Murray Statistical Divisions of NSW (20.4 and 21.7 incidents per 100,000 population, respectively).

Robbery with a firearm, the least prevalent of the robbery offences in NSW overall, is again concentrated in the Sydney region (see Table 3.6). Inner Sydney's rate for robbery with a firearm (39.4 per 100,000) was almost four times as high as the State rate (10.9 per 100,000). The next highest rate of robbery with a firearm recorded in NSW during 1999 was in the Canterbury–Bankstown Statistical Subdivision (29.2 per 100,000), followed by the Fairfield–Liverpool (23.4 per 100,000) and Inner Western Sydney Statistical Subdivisions (22.4 per 100,000). Areas in country NSW exhibited low rates of robbery with a firearm in 1999. In all but one Statistical Division in country NSW the rate was less than half the NSW rate of 10.9 per 100,000 of population.

Most regions in NSW experienced a decrease in the recorded rate of robbery with a firearm between 1998 and 1999. In particular, several regions within the Sydney Statistical Division recorded a large percentage decrease in the rate of this robbery subcategory during this period. The largest percentage decrease in Sydney was recorded in the Blacktown–Baulkham Hills Statistical Subdivision (down by 56.7%), followed by the Outer Western Sydney (down by 55.9%), Northern Beaches (down by 50.4%) and Outer South Western Sydney Statistical Subdivisions (down by 48.7%).

Inner Sydney’s rate for robbery with a weapon other than a firearm shown in Table 3.7 (269.0 per 100,000) was almost five times as high as the State rate (54.8 per 100,000). Rates in 1999 for this offence were highest in the Sydney region, with higher than average rates recorded in several Statistical Subdivisions including Canterbury–Bankstown (157.9 per 100,000), Fairfield–Liverpool (119.8 per 100,000), Inner Western Sydney (110.2 per 100,000), and Central Western Sydney (105.3 per 100,000). The lowest rates of robbery with a weapon other than a firearm were recorded in country NSW regions. Between 1998 and 1999, sizeable percentage decreases were recorded in the rate of robbery with a weapon other than a firearm in most geographical areas of NSW, particularly within the Sydney Statistical Division.

Break and enter

Break and enter is one of the most frequently occurring serious offences. Figure 5 presents the recorded number of incidents of break and enter over the period January 1998 to December 1999 separately for dwellings and non-dwellings. There was a statistically significant downward trend for both subcategories of break and enter over this period (down by 10.0% for break and enter – dwelling, and 6.6% for break and enter – non-dwelling, from 1998 to 1999).

Figure 5: Break and enter – dwelling and non-dwelling

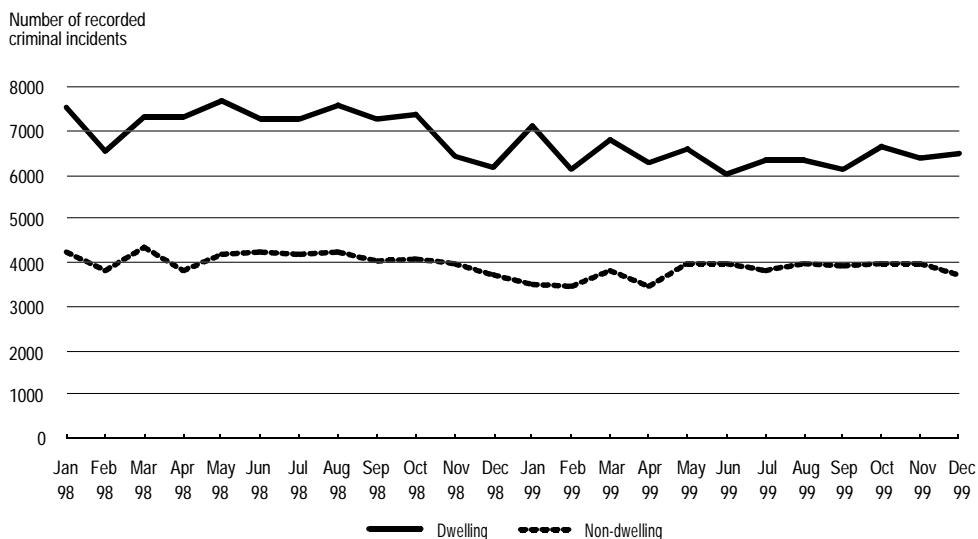


Table 3.8 shows the regional distribution for recorded incidents of break and enter – dwelling. In 1999, the three highest rates recorded in NSW were from subdivisions within the Sydney Statistical Division. The highest recorded rate was in the Inner Sydney Statistical Subdivision (1,791.4 incidents per 100,000 population). This rate was almost 50 per cent above that of the State (1,203.7 per 100,000). Outside Sydney, the highest recorded rate of break and enter – dwelling was in the Illawarra Statistical Division (1,464.4 per 100,000). The recorded rate of break and enter – dwelling fell in nearly all geographical areas of NSW between 1998 and 1999.

Table 3.9 presents the regional distribution for recorded incidents of break and enter – non-dwelling. In 1999, the recorded rate for the Sydney Statistical Division (624.2 incidents per 100,000 population) was lower than the rate for the entire State (710.4 per 100,000). Nonetheless, the highest recorded rate occurred in the Inner Sydney Statistical Subdivision (1,595.3 per 100,000) with a rate more than two times as high as the State average. Outside Sydney, the highest recorded rates of break and enter – non-dwelling occurred in the Hunter (1,086.8 per 100,000) and the North Western Statistical Divisions (1,012.0 per 100,000). Overall, in 1999, the recorded rates of break and enter – non-dwelling offences were generally highest in the country areas of NSW. The recorded rate of break and enter – non-dwelling fell in nearly all geographical areas of NSW between 1998 and 1999.

Motor vehicle theft and steal from motor vehicle

Figure 6 presents the number of recorded incidents of motor vehicle theft and of steal from motor vehicle for the period January 1998 to December 1999. Both of these offences occur frequently in NSW, particularly in areas within the Sydney Statistical Division. There was no statistically significant upward or downward trend in the number of monthly recorded incidents of steal from motor vehicle in NSW during this period, but there was a statistically significant downward trend for the motor vehicle theft offence category (down by 10.5% from 1998 to 1999).

Figure 6: Motor vehicle theft and steal from motor vehicle

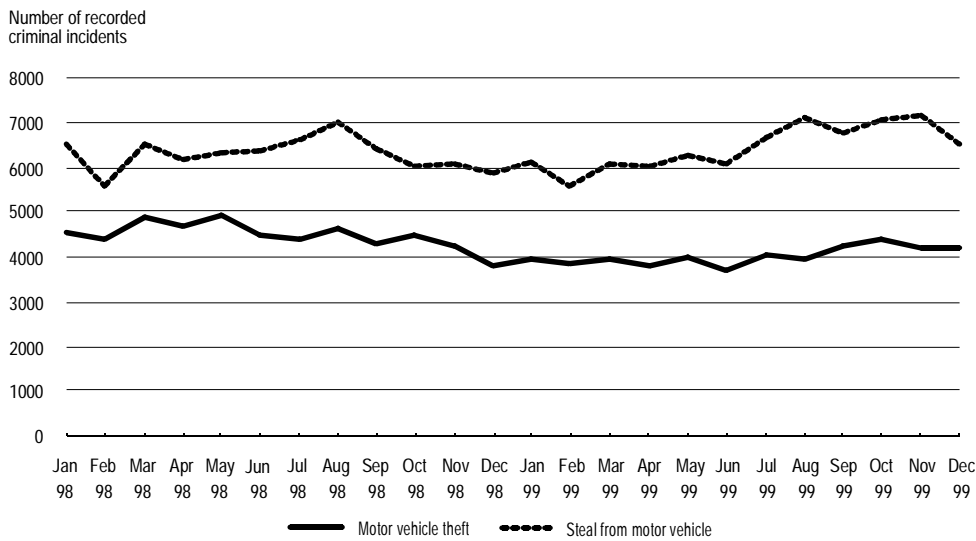


Table 3.11 shows that between January and December 1999, the highest recorded rate of motor vehicle theft incidents was in the Inner Sydney Statistical Subdivision (1,665.4 per 100,000 population), which was more than two times as high as the State rate (752.1 per 100,000). Other Sydney Statistical Subdivisions with high rates were the Central Western Sydney (1,231.9 per 100,000), Fairfield–Liverpool (1,221.0 per 100,000) and Canterbury–Bankstown Statistical Subdivisions (1,207.0 per 100,000). The lowest rates of motor vehicle theft during 1999 were mostly recorded in the country regions of NSW. Note that between 1998 and 1999, the recorded rate of motor vehicle theft decreased in most Statistical Divisions in country NSW and Statistical Subdivisions within the Sydney Statistical Division.

Table 3.12 shows that in 1999, the Inner Sydney Statistical Subdivision also had the highest recorded crime rate for stealing from motor vehicles. The rate for Inner Sydney (4,392.7 recorded incidents per 100,000 population) was more than three and a half times as high as that for NSW as a whole (1,207.4 per 100,000). The next highest rates were in the Eastern Suburbs (1,569.6 per 100,000) and in the Central Western Sydney Statistical Subdivisions (1,409.5 per 100,000). The lowest rates of steal from motor vehicle in 1999 were generally recorded in the country regions of NSW.

Stealing

Stealing (not including break and enter or motor vehicle theft or steal from motor vehicle) is an offence frequently recorded in NSW. Figure 7 shows separately the trends in the recorded number of incidents of steal from retail store, steal from dwelling and steal from person. Over the period from January 1998 to December 1999, there was no statistically significant upward or downward trend for the monthly numbers of steal from retail store, steal from dwelling or steal from person incidents.

Figure 7: Steal from retail store, from dwelling and from person

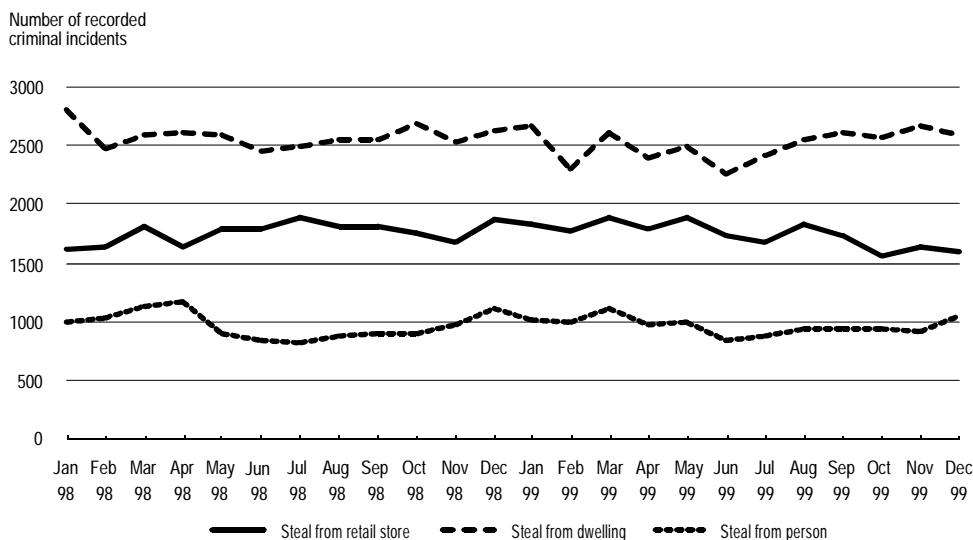


Table 3.13 shows that from January to December 1999, the highest rate of steal from retail store was recorded for Inner Sydney (801.5 incidents per 100,000 population), followed by the Central Western Sydney Statistical Subdivision (494.5 per 100,000). The lowest rate of steal from retail store incidents was recorded in the Hornsby–Ku-ring-gai Statistical Subdivision (107.8 per 100,000).

Table 3.14 shows that in 1999, the Far West Statistical Division of NSW had the highest recorded rate for steal from dwelling (1,027.0 incidents per 100,000 population), followed by the Inner Sydney Statistical Subdivision (730.0 per 100,000) and the North Western Statistical Division of NSW (724.6 per 100,000). The lowest rates for this offence category during 1999 were recorded in areas within the Sydney Statistical Division.

Table 3.15 shows that in 1999, Inner Sydney had the highest recorded rates for steal from person (1,515.4 incidents per 100,000 population), which was more than four times as high as the rate for any other region. The next highest rates were all in areas within the Sydney Statistical Division. The lowest rates of this offence in 1999 were mostly recorded in country areas of NSW.

Fraud

Figure 8 presents the number of recorded incidents of fraud (excluding credit card fraud) over the period January 1998 to December 1999. There was no statistically significant upward or downward trend in the number of incidents of fraud recorded over this period. Fraud is an offence for which the recorded rate is strongly influenced by variations in both police ability to detect incidents and public willingness to report incidents. Thus, it is difficult to detect true changes in the rate of fraud incidents.

Figure 8: Fraud

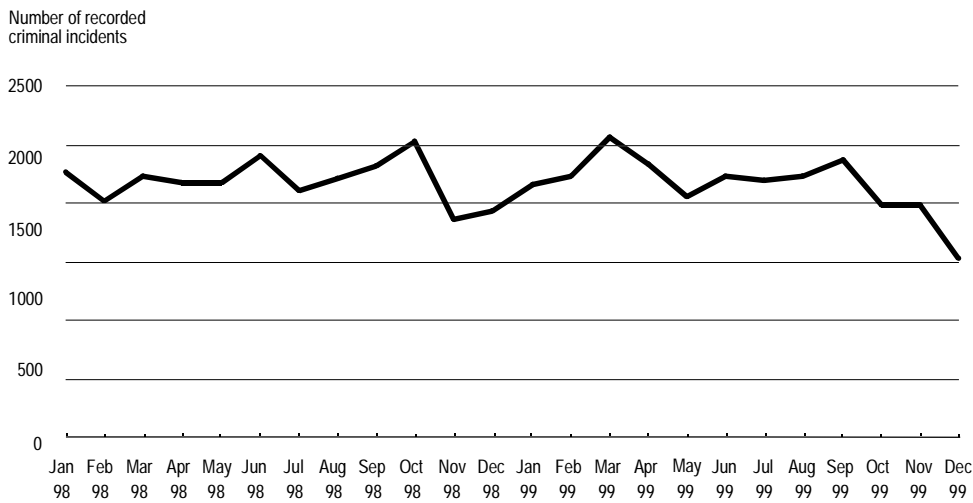
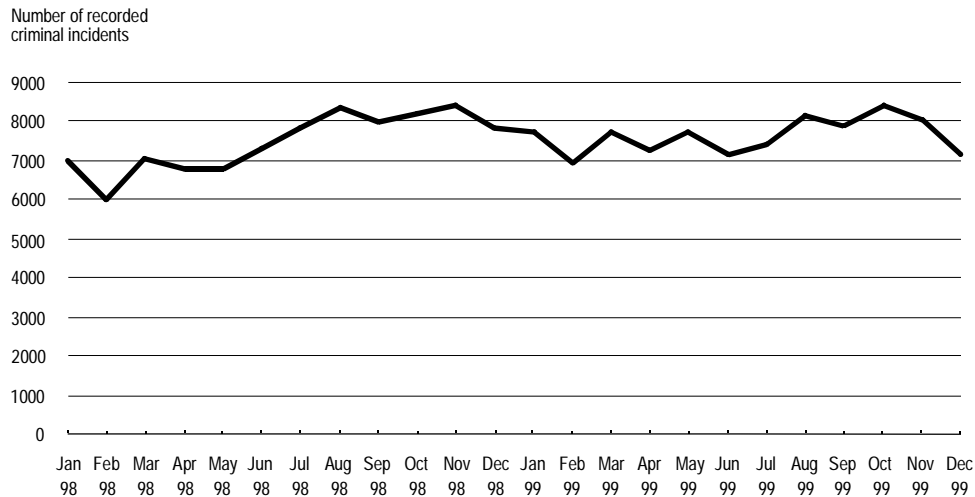


Table 3.16 shows that in 1999, the Inner Sydney Statistical Subdivision had the highest recorded rate of fraud incidents (1,377.9 per 100,000 population), more than three times as high as that for NSW (402.9 per 100,000). The Fairfield–Liverpool Statistical Subdivision had the second highest recorded rate of fraud (523.7 per 100,000), followed by the Central Western Sydney Statistical Subdivision (518.9 per 100,000) and the Murrumbidgee Statistical Division (510.8 per 100,000). The lowest rate of fraud during 1999 was recorded in the Hornsby–Ku-ring-gai Statistical Subdivision (149.5 per 100,000).

Malicious damage to property

Figure 9 shows the number of recorded incidents of malicious damage to property (other than arson) from January 1998 to December 1999. There was no statistically significant upward or downward trend in the number of incidents of malicious damage to property recorded between 1998 and 1999.

Figure 9: Malicious damage to property



Inspection of Table 3.17 reveals that the highest rate in recorded incidents of malicious damage to property in 1999 occurred in the Far West Statistical Divisions (2,437.6 incidents per 100,000 population) and the Inner Sydney Statistical Subdivision (2,267.0 incidents per 100,000 population). The overall rate for NSW in 1999 was 1,428.3 incidents per 100,000 population. Outside Sydney, high rates were recorded in the North Western and Northern Statistical Divisions (1,996.8 and 1,937.6 per 100,000, respectively). A high rate of malicious damage to property incidents was also recorded in the Outer South Western Sydney Statistical Subdivision (1,975.8 incidents per 100,000 population). During 1999, the lowest rates of malicious damage to property were recorded in areas within the Sydney Statistical Division.

NOTES

- 1 Australian Bureau of Statistics 1998, *Crime and Safety, Australia, April 1998*, Cat. No. 4509.0, ABS, Canberra, Australian Bureau of Statistics 1999, *Crime and Safety, New South Wales, April 1999*, Cat. No. 4509.1, ABS, Sydney.
- 2 *ibid.*
Care should be taken in the interpretation of sexual assault data from the survey because of the small sample size and resultant high level of sampling variability.
- 3 The trend test used was Kendall's rank-order correlation test (see, for example, Conover, W.J. 1980, *Practical Non-Parametric Statistics*, 2nd edn, John Wiley & Sons, pp. 256-260). A two-tailed test was used to determine whether there had been an increasing or decreasing trend in the recorded numbers of criminal incidents over the most recent twenty-four month period covered in the report. Some month to month variations in the numbers of recorded incidents could be due in part to seasonal factors. The test for trend is not sensitive to seasonal variations; it is sensitive only to a generally increasing or generally decreasing trend over the time period examined.
- 4 In the case of murder, there was no statistically significant trend in the monthly numbers of recorded victims.
- 5 For the rate calculations, population data were obtained from the Australian Bureau of Statistics publications: *Population, New South Wales, 30 June 1998*, Cat. No. 3234.1 (for 1997 population estimates), and *Population, New South Wales, 30 June 1999*, Cat. No. 3234.1 (for 1998 and 1999 population estimates).

**MONTHLY TRENDS IN RECORDED
CRIMINAL INCIDENTS,
1997, 1998 AND 1999
NEW SOUTH WALES**

TABLE 1.1 MONTHLY TRENDS IN RECORDED CRIMINAL INCIDENTS, 1997, NEW SOUTH WALES:
TYPE OF OFFENCE

Type of offence	Recorded criminal incidents												Total 1997	
	Jan	Feb	Mar	Apr	May	Jun	Jul	Aug	Sep	Oct	Nov	Dec	No.	Rate per 100,000 population
	Homicide:													
Murder*	6	7	10	9	13	7	12	4	4	11	17	12	112	1.8
Attempted murder	9	7	8	4	6	7	3	3	8	13	10	14	92	1.5
Murder accessory, conspiracy	0	1	0	0	0	0	0	0	0	3	0	0	4	0.1
Manslaughter – not driving*	4	1	2	1	1	0	0	2	0	1	1	1	14	0.2
Manslaughter – driving*	11	5	6	7	11	4	6	5	4	6	13	12	90	1.4
Assault	4,610	4,490	5,009	4,108	3,977	3,948	3,950	4,361	4,327	4,722	5,110	5,691	54,303	865.7
Sexual offences:														
Sexual assault	304	312	277	272	301	212	280	350	342	331	314	306	3,601	57.4
Indecent assault, act of indecency	364	340	376	389	356	279	360	441	361	342	379	327	4,314	68.8
Other sexual offences	163	147	255	162	180	134	104	116	134	139	155	153	1,842	29.4
Abduction and kidnapping	29	16	46	25	28	22	16	23	28	33	35	26	327	5.2
Robbery:														
Robbery without a weapon	492	515	647	548	602	555	518	461	515	524	505	605	6,487	103.4
Robbery with a firearm	69	76	67	72	92	116	146	121	91	115	89	85	1,139	18.2
Robbery with a weapon not a firearm	256	248	248	219	329	269	287	269	284	291	349	332	3,381	53.9
Other offences against the person	128	134	139	154	144	127	152	142	131	134	142	153	1,680	26.8

* For murder and manslaughter only, the data are counts of recorded victims, not criminal incidents. See Explanatory Notes.

Theft:														
Break and enter – dwelling	6,634	6,112	6,952	6,545	6,919	6,136	6,299	6,614	6,586	7,014	7,000	7,027	79,838	1,272.8
Break and enter – non-dwelling	4,146	3,608	3,637	3,454	3,734	3,625	3,630	3,543	3,930	3,899	4,054	4,207	45,467	724.8
Possess implements	106	79	104	105	116	111	118	111	111	124	134	127	1,346	21.5
Receiving	229	161	201	184	221	223	203	194	229	229	238	241	2,553	40.7
Goods in custody	565	434	497	471	584	567	574	551	574	681	547	576	6,621	105.6
Motor vehicle theft	4,245	4,242	4,859	4,250	4,686	4,351	4,428	4,704	4,949	5,242	4,932	4,668	55,556	885.7
Steal from motor vehicle	5,703	5,039	5,834	5,434	6,022	5,560	5,915	5,915	6,235	6,791	6,375	6,256	71,079	1,133.1
Steal from retail store	1,869	1,654	1,807	1,821	1,991	1,797	1,878	1,867	1,672	1,720	1,635	1,781	21,492	342.6
Steal from dwelling	2,609	2,215	2,406	2,295	2,289	2,243	2,267	2,332	2,283	2,472	2,487	2,688	28,586	455.7
Steal from person	969	905	992	821	864	822	856	751	847	907	936	1,194	10,864	173.2
Stock theft	68	57	71	75	61	54	72	67	55	75	55	53	763	12.2
Fraud	1,582	1,943	1,898	2,096	1,887	2,022	1,944	2,134	2,226	1,820	2,115	2,266	23,933	381.5
Other theft	4,724	4,394	4,842	4,427	4,328	3,947	4,119	4,340	4,451	4,770	4,875	4,844	54,061	861.8
Demand money with menaces	75	54	87	82	80	52	84	69	79	70	88	58	878	14.0
Extortion, blackmail	9	6	6	4	6	3	5	12	1	4	4	3	63	1.0
Arson	392	381	420	353	346	358	387	382	376	478	443	434	4,750	75.7
Malicious damage to property	6,902	5,677	6,193	6,151	6,084	6,112	6,474	6,904	7,018	7,641	7,352	7,223	79,731	1,271.1

Table continues on next page

TABLE 1.1**MONTHLY TRENDS IN RECORDED CRIMINAL INCIDENTS, 1997, NEW SOUTH WALES:
TYPE OF OFFENCE - continued**

<i>Type of offence</i>	<i>Recorded criminal incidents</i>												<i>Total 1997</i>	
	<i>Jan</i>	<i>Feb</i>	<i>Mar</i>	<i>Apr</i>	<i>May</i>	<i>Jun</i>	<i>Jul</i>	<i>Aug</i>	<i>Sep</i>	<i>Oct</i>	<i>Nov</i>	<i>Dec</i>	<i>No.</i>	<i>Rate per 100,000 population</i>
	Drug offences:													
Possession and/or use of cocaine	24	10	10	9	19	10	9	20	10	10	10	15	156	2.5
Possession and/or use of narcotics	140	127	129	120	129	135	179	176	210	168	200	182	1,895	30.2
Possession and/or use of cannabis	900	809	1,002	894	1,040	860	798	828	810	813	800	905	10,459	166.7
Possession and/or use of other drugs	102	97	115	97	131	108	113	109	104	107	112	132	1,327	21.2
Dealing, trafficking in cocaine	11	28	12	5	3	16	16	3	1	1	3	9	108	1.7
Dealing, trafficking in narcotics	36	65	54	53	56	75	66	65	64	41	73	58	706	11.3
Dealing, trafficking in cannabis	69	64	97	82	92	98	82	117	100	72	62	94	1,029	16.4
Dealing, trafficking in other drugs	22	38	25	31	35	47	29	34	33	19	23	65	401	6.4
Cultivating cannabis	373	391	319	240	157	128	118	123	164	182	207	264	2,666	42.5
Importing drugs	1	1	2	1	3	3	7	2	11	4	5	2	42	0.7
Other drug offences	243	207	312	226	279	237	249	218	230	258	245	235	2,939	46.9
Offensive behaviour:														
Offensive conduct	307	245	281	216	212	205	167	222	234	245	316	301	2,951	47.0
Offensive language	536	458	464	402	337	312	305	350	378	423	457	518	4,940	78.8
Prostitution offences	19	24	16	21	24	17	13	32	31	26	55	22	300	4.8
Betting and gaming offences	17	3	6	7	3	6	4	5	4	4	3	2	64	1.0
Weapons offences	394	358	478	393	443	388	434	381	379	388	422	428	4,886	77.9

Against justice procedures:														
Escapee – Corrective Services custody	9	4	13	8	15	13	10	13	12	10	5	13	125	2.0
Escapee – Police custody	23	17	17	16	13	8	10	10	12	13	18	21	178	2.8
Escapee – juvenile detention	0	1	1	1	1	0	2	0	1	0	1	0	8	0.1
Escapee – other custody	6	9	8	9	7	13	6	12	16	10	6	8	110	1.8
Breach Apprehended Violence Order	637	640	643	640	650	617	606	697	698	692	744	841	8,105	129.2
Breach bail conditions	250	218	225	200	195	190	164	188	188	223	226	244	2,511	40.0
Breach of recognizance	95	76	77	83	69	54	73	65	56	66	38	67	819	13.1
Fail to appear	247	178	222	209	195	174	178	149	149	133	156	168	2,158	34.4
Other offences against justice procedures	918	740	818	622	586	564	537	551	600	438	530	596	7,500	119.6
Driving offences:														
Culpable driving	12	10	1	11	18	12	8	14	12	6	22	13	139	2.2
PCA	1,564	1,183	1,732	1,140	1,236	1,177	1,092	1,322	1,289	1,331	1,734	1,707	16,507	263.2
Drive while disqualified	662	469	637	596	588	637	654	687	668	700	743	929	7,970	127.1
Drive manner/speed dangerous	184	154	179	149	151	140	167	168	136	189	190	228	2,035	32.4
Other driving offences	2,047	1,548	2,094	1,744	1,884	1,810	1,949	2,042	1,983	2,291	2,225	2,710	24,327	387.8
Other offences	2,188	1,962	2,347	1,993	2,127	1,948	2,011	2,143	2,201	2,121	2,241	2,331	25,613	408.3

TABLE 1.2 MONTHLY TRENDS IN RECORDED CRIMINAL INCIDENTS, 1998, NEW SOUTH WALES:
TYPE OF OFFENCE

Type of offence	Recorded criminal incidents												Total 1998	
	Jan	Feb	Mar	Apr	May	Jun	Jul	Aug	Sep	Oct	Nov	Dec	No.	Rate per 100,000 population
	Homicide:													
Murder*	6	8	9	15	6	8	5	6	9	7	11	10	100	1.6
Attempted murder	11	14	19	7	4	12	8	8	1	4	13	9	110	1.7
Murder accessory, conspiracy	0	1	0	1	0	0	0	0	0	0	0	1	3	0.0
Manslaughter – not driving*	2	3	4	1	0	9	1	0	3	4	1	1	29	0.5
Manslaughter – driving*	14	5	10	7	13	11	6	12	4	7	5	9	103	1.6
Assault	5,372	4,802	5,235	4,388	4,601	4,258	4,517	4,791	4,805	5,072	5,214	5,617	58,672	926.4
Sexual offences:														
Sexual assault	331	285	293	262	257	297	197	241	323	295	256	254	3,291	52.0
Indecent assault, act of indecency	358	286	298	301	332	297	305	314	366	359	272	258	3,746	59.1
Other sexual offences	138	191	177	121	119	152	80	97	139	111	132	107	1,564	24.7
Abduction and kidnapping	37	36	32	28	23	29	28	34	56	57	52	42	454	7.2
Robbery:														
Robbery without a weapon	496	488	587	595	569	533	537	523	494	573	556	552	6,503	102.7
Robbery with a firearm	52	78	89	72	81	108	82	79	55	80	74	69	919	14.5
Robbery with a weapon not a firearm	307	293	387	408	513	370	358	382	358	351	324	331	4,382	69.2
Other offences against the person	128	196	195	166	179	202	195	199	254	262	309	275	2,560	40.4

* For murder and manslaughter only, the data are counts of recorded victims, not criminal incidents. See Explanatory Notes.

Theft:														
Break and enter – dwelling	7,547	6,530	7,300	7,317	7,692	7,266	7,291	7,573	7,267	7,384	6,418	6,183	85,768	1,354.2
Break and enter – non-dwelling	4,237	3,818	4,315	3,801	4,165	4,244	4,206	4,244	4,023	4,069	3,951	3,699	48,772	770.1
Possess implements	149	144	138	118	151	128	117	137	118	143	135	126	1,604	25.3
Receiving	265	201	246	195	258	278	274	239	224	200	200	187	2,767	43.7
Goods in custody	678	663	686	579	774	771	747	745	742	762	630	662	8,439	133.2
Motor vehicle theft	4,531	4,397	4,913	4,671	4,959	4,485	4,385	4,654	4,288	4,501	4,265	3,817	53,866	850.5
Steal from motor vehicle	6,515	5,579	6,541	6,173	6,339	6,381	6,622	6,996	6,397	6,002	6,078	5,874	75,497	1,192.0
Steal from retail store	1,625	1,629	1,809	1,629	1,786	1,798	1,881	1,819	1,820	1,762	1,683	1,871	21,112	333.3
Steal from dwelling	2,814	2,477	2,586	2,611	2,585	2,460	2,492	2,552	2,560	2,686	2,529	2,632	30,984	489.2
Steal from person	990	1,026	1,131	1,166	904	834	826	878	889	898	972	1,117	11,631	183.6
Stock theft	52	54	65	53	61	81	78	65	71	83	67	55	785	12.4
Fraud	2,259	2,017	2,231	2,168	2,184	2,400	2,100	2,217	2,323	2,528	1,862	1,935	26,224	414.1
Other theft	5,231	4,909	5,441	4,791	4,993	4,559	4,582	4,599	4,672	4,993	4,741	4,760	58,271	920.0
Demand money with menaces	69	60	72	81	108	72	92	94	90	97	90	88	1,013	16.0
Extortion, blackmail	4	7	7	8	1	6	5	16	7	2	4	3	70	1.1
Arson	369	383	415	328	389	389	440	424	343	473	373	366	4,692	74.1
Malicious damage to property	7,011	5,998	7,071	6,790	6,782	7,299	7,850	8,377	7,985	8,217	8,441	7,864	89,685	1,416.0

Table continues on next page

TABLE 1.2 MONTHLY TRENDS IN RECORDED CRIMINAL INCIDENTS, 1998, NEW SOUTH WALES:
TYPE OF OFFENCE - continued

<i>Type of offence</i>	<i>Recorded criminal incidents</i>												<i>Total 1998</i>	
	<i>Jan</i>	<i>Feb</i>	<i>Mar</i>	<i>Apr</i>	<i>May</i>	<i>Jun</i>	<i>Jul</i>	<i>Aug</i>	<i>Sep</i>	<i>Oct</i>	<i>Nov</i>	<i>Dec</i>	<i>No.</i>	<i>Rate per 100,000 population</i>
	Drug offences:													
Possession and/or use of cocaine	21	15	21	12	17	27	23	23	25	37	34	25	280	4.4
Possession and/or use of narcotics	237	213	229	217	241	247	247	264	252	257	298	318	3,020	47.7
Possession and/or use of cannabis	1,003	857	990	874	1,050	1,102	1,002	891	868	863	916	862	11,278	178.1
Possession and/or use of other drugs	177	129	133	114	163	156	190	144	126	161	163	170	1,826	28.8
Dealing, trafficking in cocaine	8	5	4	5	10	6	14	10	28	16	9	9	124	2.0
Dealing, trafficking in narcotics	47	33	71	41	30	66	50	78	86	76	96	87	761	12.0
Dealing, trafficking in cannabis	91	71	72	99	90	143	98	92	110	67	96	65	1,094	17.3
Dealing, trafficking in other drugs	54	29	26	42	45	45	27	24	40	45	62	43	482	7.6
Cultivating cannabis	332	303	294	177	136	133	100	108	125	146	180	257	2,291	36.2
Importing drugs	1	4	2	5	1	3	0	1	0	5	2	2	26	0.4
Other drug offences	260	270	276	238	271	280	275	247	232	245	286	265	3,145	49.7
Offensive behaviour:														
Offensive conduct	304	239	235	229	250	211	250	271	339	345	315	409	3,397	53.6
Offensive language	561	400	527	430	440	426	492	486	533	573	602	718	6,188	97.7
Prostitution offences	58	24	46	40	23	34	22	43	37	22	13	21	383	6.0
Betting and gaming offences	1	6	0	3	5	1	1	1	5	3	1	1	28	0.4
Weapons offences	372	401	400	371	427	442	458	437	465	458	459	505	5,195	82.0

Against justice procedures:														
Escapee – Corrective Services custody	10	12	10	9	17	13	10	10	9	13	12	13	138	2.2
Escapee – Police custody	17	21	21	23	16	12	20	24	14	16	17	20	221	3.5
Escapee – juvenile detention	1	2	0	0	0	0	0	0	0	0	0	1	4	0.1
Escapee – other custody	12	11	6	7	9	10	5	2	5	1	2	2	72	1.1
Breach Apprehended Violence Order	934	826	836	764	758	757	734	794	901	882	841	870	9,897	156.3
Breach bail conditions	318	281	293	231	266	244	218	241	306	291	296	333	3,318	52.4
Breach of recognizance	69	31	55	41	51	40	48	40	53	59	37	43	567	9.0
Fail to appear	172	130	144	136	168	121	138	136	158	122	129	129	1,683	26.6
Other offences against justice procedures	659	485	578	521	579	432	500	517	536	629	593	715	6,744	106.5
Driving offences:														
Culpable driving	18	12	20	21	14	10	19	24	14	13	20	26	211	3.3
PCA	1,536	1,125	1,723	1,454	1,473	1,486	1,288	1,600	1,525	1,684	1,831	1,908	18,633	294.2
Drive while disqualified	922	674	850	830	830	824	820	942	1,045	1,152	1,119	1,416	11,424	180.4
Drive manner/speed dangerous	226	167	199	173	183	172	159	215	223	218	225	191	2,351	37.1
Other driving offences	2,517	2,003	2,520	2,209	2,239	2,228	2,232	2,393	2,500	2,872	2,927	3,067	29,707	469.0
Other offences	2,619	2,091	2,610	2,342	2,346	2,296	2,353	2,627	2,752	2,736	2,702	2,684	30,158	476.2

TABLE 1.3 MONTHLY TRENDS IN RECORDED CRIMINAL INCIDENTS, 1999, NEW SOUTH WALES:
TYPE OF OFFENCE

Type of offence	Recorded criminal incidents												Total 1999	
	Jan	Feb	Mar	Apr	May	Jun	Jul	Aug	Sep	Oct	Nov	Dec	No.	Rate per 100,000 population
	Homicide:													
Murder*	7	8	16	8	16	11	7	11	7	9	7	14	121	1.9
Attempted murder	8	9	13	9	10	11	10	5	11	7	11	8	112	1.7
Murder accessory, conspiracy	1	3	1	1	1	1	3	0	0	0	1	0	12	0.2
Manslaughter – not driving*	1	2	1	0	1	0	0	0	0	0	0	1	6	0.1
Manslaughter – driving*	10	5	6	5	10	5	5	10	7	6	2	2	73	1.1
Assault	5,734	5,049	5,238	4,438	4,630	4,168	4,343	4,610	4,697	4,862	4,756	5,034	57,559	897.7
Sexual offences:														
Sexual assault	302	311	311	226	234	287	228	196	211	204	239	207	2,956	46.1
Indecent assault, act of indecency	303	291	323	235	284	254	212	225	237	237	200	189	2,990	46.6
Other sexual offences	110	133	137	104	125	130	118	123	145	131	127	110	1,493	23.3
Abduction and kidnapping	34	36	39	27	29	32	29	30	25	46	34	37	398	6.2
Robbery:														
Robbery without a weapon	549	547	574	571	531	486	471	523	513	557	556	535	6,413	100.0
Robbery with a firearm	68	65	57	59	67	54	63	69	52	34	57	51	696	10.9
Robbery with a weapon not a firearm	289	261	294	296	377	273	292	293	253	295	314	278	3,515	54.8
Other offences against the person	306	272	358	275	353	264	249	277	296	316	268	291	3,525	55.0

* For murder and manslaughter only, the data are counts of recorded victims, not criminal incidents. See Explanatory Notes.

Theft:														
Break and enter – dwelling	7,093	6,093	6,791	6,263	6,600	6,001	6,345	6,330	6,130	6,661	6,402	6,469	77,178	1,203.7
Break and enter – non-dwelling	3,489	3,447	3,807	3,442	3,960	3,969	3,842	3,992	3,922	3,968	3,987	3,726	45,551	710.4
Possess implements	143	147	140	111	139	120	107	146	110	136	131	112	1,542	24.0
Receiving	239	183	276	191	160	173	171	148	171	135	157	136	2,140	33.4
Goods in custody	789	844	917	755	794	810	783	746	732	685	766	617	9,238	144.1
Motor vehicle theft	3,948	3,829	3,946	3,791	3,979	3,680	4,041	3,948	4,242	4,418	4,214	4,188	48,224	752.1
Steal from motor vehicle	6,112	5,564	6,086	6,048	6,292	6,071	6,654	7,134	6,745	7,067	7,148	6,494	77,415	1,207.4
Steal from retail store	1,839	1,780	1,885	1,792	1,889	1,738	1,675	1,825	1,726	1,558	1,646	1,594	20,947	326.7
Steal from dwelling	2,674	2,294	2,608	2,400	2,487	2,263	2,420	2,551	2,611	2,569	2,677	2,587	30,141	470.1
Steal from person	1,007	995	1,114	966	988	836	868	944	931	934	912	1,047	11,542	180.0
Stock theft	58	69	77	74	82	52	70	70	60	58	67	43	780	12.2
Fraud	2,162	2,235	2,554	2,337	2,045	2,228	2,190	2,236	2,366	1,977	1,985	1,520	25,835	402.9
Other theft	5,030	4,698	5,334	4,632	5,127	5,201	5,415	5,527	5,686	5,607	5,733	5,552	63,542	991.0
Demand money with menaces	93	63	102	108	79	75	81	85	68	67	85	52	958	14.9
Extortion, blackmail	3	2	7	7	2	3	4	2	7	4	4	7	52	0.8
Arson	393	343	385	384	456	399	414	461	438	427	402	364	4,866	75.9
Malicious damage to property	7,737	6,926	7,721	7,260	7,721	7,167	7,398	8,149	7,900	8,407	8,027	7,164	91,577	1,428.3

Table continues on next page

TABLE 1.3 MONTHLY TRENDS IN RECORDED CRIMINAL INCIDENTS, 1999, NEW SOUTH WALES:
TYPE OF OFFENCE - continued

<i>Type of offence</i>	<i>Recorded criminal incidents</i>												<i>Total 1999</i>	
	<i>Jan</i>	<i>Feb</i>	<i>Mar</i>	<i>Apr</i>	<i>May</i>	<i>Jun</i>	<i>Jul</i>	<i>Aug</i>	<i>Sep</i>	<i>Oct</i>	<i>Nov</i>	<i>Dec</i>	<i>No.</i>	<i>Rate per 100,000 population</i>
	Drug offences:													
Possession and/or use of cocaine	21	15	20	33	14	8	16	15	20	12	10	11	195	3.0
Possession and/or use of narcotics	306	293	353	255	260	220	247	262	240	193	179	181	2,989	46.6
Possession and/or use of cannabis	967	977	1,110	1,108	1,188	1,029	894	843	910	802	802	749	11,379	177.5
Possession and/or use of other drugs	186	172	192	185	199	188	186	209	192	195	158	201	2,263	35.3
Dealing, trafficking in cocaine	12	46	12	8	16	18	3	15	29	6	5	22	192	3.0
Dealing, trafficking in narcotics	57	83	99	92	102	113	50	64	76	48	40	29	853	13.3
Dealing, trafficking in cannabis	76	56	128	104	91	98	91	77	77	59	54	53	964	15.0
Dealing, trafficking in other drugs	30	44	62	53	61	35	55	26	44	42	50	50	552	8.6
Cultivating cannabis	276	297	265	145	90	83	66	80	124	108	203	179	1,916	29.9
Importing drugs	0	3	1	4	5	6	3	0	1	0	1	8	32	0.5
Other drug offences	249	309	317	249	278	240	250	220	247	211	226	211	3,007	46.9
Offensive behaviour:														
Offensive conduct	392	298	370	291	329	282	311	307	299	330	303	320	3,832	59.8
Offensive language	731	637	731	632	606	491	538	549	499	493	449	475	6,831	106.5
Prostitution offences	38	13	51	33	44	50	27	32	32	36	20	13	389	6.1
Betting and gaming offences	1	1	2	1	0	3	1	1	1	1	1	0	13	0.2
Weapons offences	448	465	483	500	536	418	402	479	408	402	427	355	5,323	83.0

Against justice procedures:														
Escapee – Corrective Services custody	8	3	14	9	6	8	9	7	9	9	9	11	102	1.6
Escapee – Police custody	27	20	18	21	18	12	24	24	23	23	14	28	252	3.9
Escapee – juvenile detention	0	0	0	0	1	0	0	0	1	0	0	0	2	0.0
Escapee – other custody	6	11	6	3	10	2	2	1	5	6	6	8	66	1.0
Breach Apprehended Violence Order	948	826	880	715	769	759	729	734	751	764	759	779	9,413	146.8
Breach bail conditions	368	325	403	359	369	367	362	373	405	431	343	346	4,451	69.4
Breach of recognizance	37	48	56	51	39	39	48	62	57	48	48	49	582	9.1
Fail to appear	127	119	131	140	117	149	147	121	122	138	117	104	1,532	23.9
Other offences against justice procedures	673	568	605	551	529	527	587	590	509	517	519	516	6,691	104.4
Driving offences:														
Culpable driving	23	20	15	17	17	11	13	13	6	7	6	5	153	2.4
PCA	1,988	1,655	2,035	1,946	2,018	1,915	1,902	1,872	1,705	1,824	1,922	1,911	22,693	353.9
Drive while disqualified	1,350	1,127	1,245	1,267	1,284	1,259	1,275	1,418	1,358	1,450	1,465	1,431	15,929	248.4
Drive manner/speed dangerous	220	204	212	207	242	216	200	212	204	237	211	222	2,587	40.3
Other driving offences	2,905	2,599	2,809	2,948	3,057	2,854	2,764	2,855	2,775	4,203	4,524	2,800	37,093	578.5
Other offences	2,914	2,668	2,774	2,678	2,855	2,906	3,054	3,130	3,250	3,201	2,981	3,096	35,507	553.8

**CLEARED CRIMINAL INCIDENTS
FOR SELECTED OFFENCES,
JANUARY 1997 TO SEPTEMBER 1999,
NEW SOUTH WALES**

TABLE 2.1 CLEARED CRIMINAL INCIDENTS, SELECTED OFFENCES,
JANUARY 1997 TO DECEMBER 1997, NEW SOUTH WALES: TYPE OF OFFENCE

<i>Type of offence</i>	<i>Recorded criminal incidents</i>						
	<i>Total number recorded</i>	<i>Cleared within 30 days of reporting</i>		<i>Cleared within 90 days of reporting</i>		<i>Cleared within 180 days of reporting</i>	
		<i>Total number cleared</i>	<i>% cleared</i>	<i>Total number cleared</i>	<i>% cleared</i>	<i>Total number cleared</i>	<i>% cleared</i>
Murder*	112	68	60.7	74	66.1	79	70.5
Assault	54,303	31,403	57.8	33,815	62.3	34,884	64.2
Sexual assault	3,601	1,044	29.0	1,538	42.7	1,817	50.5
Indecent assault, act of indecency	4,314	1,527	35.4	2,075	48.1	2,421	56.1
Other sexual offences	1,842	517	28.1	635	34.5	706	38.3
Abduction and kidnapping	327	95	29.1	111	33.9	116	35.5
Robbery without a weapon	6,487	615	9.5	750	11.6	819	12.6
Robbery with a firearm	1,139	119	10.4	169	14.8	221	19.4
Robbery with a weapon not a firearm	3,381	525	15.5	641	19.0	707	20.9
Break and enter – dwelling	79,838	3,106	3.9	3,964	5.0	4,430	5.5
Break and enter – non-dwelling	45,467	2,294	5.0	2,683	5.9	2,890	6.4
Motor vehicle theft	55,556	2,319	4.2	2,652	4.8	2,844	5.1
Steal from motor vehicle	71,079	2,225	3.1	2,503	3.5	2,598	3.7
Steal from retail store	21,492	10,739	50.0	11,037	51.4	11,138	51.8
Steal from dwelling	28,586	1,852	6.5	2,164	7.6	2,317	8.1
Steal from person	10,864	603	5.6	661	6.1	707	6.5
Stock theft	763	38	5.0	45	5.9	47	6.2
Fraud	23,933	6,056	25.3	8,651	36.1	10,190	42.6
Demand money with menaces	878	121	13.8	149	17.0	156	17.8
Arson	4,750	253	5.3	295	6.2	317	6.7
Malicious damage to property	79,731	10,534	13.2	11,297	14.2	11,599	14.5

* Victims for whom incident was cleared.

TABLE 2.2**CLEARED CRIMINAL INCIDENTS, SELECTED OFFENCES,
JANUARY 1998 TO DECEMBER 1998, NEW SOUTH WALES: TYPE OF OFFENCE**

<i>Type of offence</i>	<i>Recorded criminal incidents</i>						
	<i>Total number recorded</i>	<i>Cleared within 30 days of reporting</i>		<i>Cleared within 90 days of reporting</i>		<i>Cleared within 180 days of reporting</i>	
		<i>Total number cleared</i>	<i>% cleared</i>	<i>Total number cleared</i>	<i>% cleared</i>	<i>Total number cleared</i>	<i>% cleared</i>
Murder*	100	50	50.0	59	59.0	63	63.0
Assault	58,672	33,585	57.2	36,190	61.7	37,460	63.8
Sexual assault	3,291	802	24.4	1,128	34.3	1,381	42.0
Indecent assault, act of indecency	3,746	1,177	31.4	1,716	45.8	2,073	55.3
Other sexual offences	1,564	415	26.5	505	32.3	550	35.2
Abduction and kidnapping	454	133	29.3	148	32.6	158	34.8
Robbery without a weapon	6,503	751	11.5	879	13.5	946	14.5
Robbery with a firearm	919	128	13.9	166	18.1	192	20.9
Robbery with a weapon not a firearm	4,382	648	14.8	868	19.8	923	21.1
Break and enter – dwelling	85,768	3,362	3.9	4,348	5.1	4,872	5.7
Break and enter – non-dwelling	48,772	2,303	4.7	2,703	5.5	2,962	6.1
Motor vehicle theft	53,866	2,457	4.6	2,810	5.2	3,028	5.6
Steal from motor vehicle	75,497	2,275	3.0	2,508	3.3	2,650	3.5
Steal from retail store	21,112	10,991	52.1	11,320	53.6	11,431	54.1
Steal from dwelling	30,984	2,187	7.1	2,594	8.4	2,789	9.0
Steal from person	11,631	645	5.5	711	6.1	752	6.5
Stock theft	785	35	4.5	44	5.6	51	6.5
Fraud	26,224	6,601	25.2	9,560	36.5	11,254	42.9
Demand money with menaces	1,013	173	17.1	186	18.4	219	21.6
Arson	4,692	213	4.5	249	5.3	283	6.0
Malicious damage to property	89,685	11,534	12.9	12,426	13.9	12,853	14.3

* *Victims for whom incident was cleared.*

TABLE 2.3**CLEARED CRIMINAL INCIDENTS, SELECTED OFFENCES,
JANUARY 1999 TO SEPTEMBER 1999, NEW SOUTH WALES: TYPE OF OFFENCE**

<i>Type of offence</i>	<i>Recorded criminal incidents</i>				
	<i>Total number recorded</i>	<i>Cleared within 30 days of reporting</i>		<i>Cleared within 90 days of reporting</i>	
		<i>Total number cleared</i>	<i>% cleared</i>	<i>Total number cleared</i>	<i>% cleared</i>
Murder*	91	51	56.0	54	59.3
Assault	42,907	25,384	59.2	27,331	63.7
Sexual assault	2,306	624	27.1	876	38.0
Indecent assault, act of indecency	2,364	681	28.8	905	38.3
Other sexual offences	1,125	274	24.4	312	27.7
Abduction and kidnapping	281	75	26.7	83	29.5
Robbery without a weapon	4,765	648	13.6	761	16.0
Robbery with a firearm	554	65	11.7	119	21.5
Robbery with a weapon not a firearm	2,628	395	15.0	492	18.7
Break and enter – dwelling	57,646	2,617	4.5	3,466	6.0
Break and enter – non-dwelling	33,870	1,714	5.1	2,130	6.3
Motor vehicle theft	35,404	1,773	5.0	2,069	5.8
Steal from motor vehicle	56,706	1,679	3.0	1,855	3.3
Steal from retail store	16,149	9,527	59.0	9,734	60.3
Steal from dwelling	22,308	1,779	8.0	2,114	9.5
Steal from person	8,649	516	6.0	562	6.5
Stock theft	612	30	4.9	39	6.4
Fraud	20,353	5,994	29.5	7,829	38.5
Demand money with menaces	754	97	12.9	122	16.2
Arson	3,673	170	4.6	203	5.5
Malicious damage to property	67,979	8,754	12.9	9,452	13.9

* Victims for whom incident was cleared.

**RECORDED CRIME STATISTICS
IN NEW SOUTH WALES REGIONS
FOR SELECTED OFFENCES,
1997, 1998 AND 1999**

TABLE 3.1 RECORDED VICTIMS, 1997 TO 1999: STATISTICAL DIVISION**MURDER**

<i>Statistical Division where offence occurred</i>	<i>Recorded victims</i>					
	<i>1997</i>		<i>1998</i>		<i>1999</i>	
	<i>Number</i>	<i>Rate per 100,000 population</i>	<i>Number</i>	<i>Rate per 100,000 population</i>	<i>Number</i>	<i>Rate per 100,000 population</i>
Sydney	74	1.9	58	1.5	68	1.7
Inner Sydney	19	6.9	14	5.0	17	5.9
Eastern Suburbs	3	1.2	3	1.2	2	0.8
St George – Sutherland	4	1.0	1	0.2	4	1.2
Canterbury – Bankstown	12	3.9	9	2.9	11	3.2
Fairfield – Liverpool	8	2.5	7	2.1	9	2.7
Outer South Western Sydney	3	1.4	1	0.4	0	0.0
Inner Western Sydney	5	3.2	4	2.5	2	0.6
Central Western Sydney	4	1.4	2	0.7	4	1.4
Outer Western Sydney	4	1.3	1	0.3	6	1.9
Blacktown – Baulkham Hills	4	1.1	4	1.1	1	0.3
Lower Northern Sydney	3	1.1	0	0.0	3	1.4
Hornsby – Ku-ring-gai	1	0.4	1	0.4	0	0.0
Northern Beaches	2	0.9	5	2.2	0	0.0
Gosford – Wyong	2	0.7	6	2.1	9	3.1
Hunter	7	1.2	4	0.7	11	1.9
Illawarra	10	2.7	6	1.6	10	2.6
Richmond – Tweed	3	1.5	4	1.9	7	3.3
Mid-North Coast	4	1.5	8	3.0	2	0.7
Northern	2	1.1	2	1.1	4	1.7
North Western	2	1.7	1	0.9	4	3.4
Central West	1	0.6	1	0.6	3	0.6
South Eastern	2	1.1	2	1.1	2	1.1
Murrumbidgee	0	0.0	5	3.4	3	1.3
Murray	3	2.7	2	1.8	6	5.4
Far West	2	8.0	0	0.0	1	4.1
New South Wales*	112	1.8	100	1.6	121	1.9

* The total for New South Wales includes 2 recorded victims in 1997, 7 recorded victims in 1998 and 3 recorded victims in 1999 where the offence occurred in a custodial institution.

TABLE 3.2 RECORDED CRIMINAL INCIDENTS, 1997 TO 1999: STATISTICAL DIVISION**ASSAULT**

<i>Statistical Division where offence occurred</i>	<i>Recorded criminal incidents</i>					
	<i>1997</i>		<i>1998</i>		<i>1999</i>	
	<i>Number</i>	<i>Rate per 100,000 population</i>	<i>Number</i>	<i>Rate per 100,000 population</i>	<i>Number</i>	<i>Rate per 100,000 population</i>
Sydney	31,535	801.7	32,862	825.3	32,016	792.2
Inner Sydney	5,764	2,092.1	5,986	2,127.2	5,753	2,007.4
Eastern Suburbs	1,610	660.9	1,617	664.5	1,636	664.4
St George – Sutherland	2,557	613.5	2,647	629.6	2,238	526.0
Canterbury – Bankstown	2,160	706.1	2,261	734.4	1,904	617.5
Fairfield – Liverpool	2,592	808.5	2,709	827.0	2,715	812.9
Outer South Western Sydney	2,471	1,128.5	2,586	1,162.5	2,511	1,109.4
Inner Western Sydney	965	616.4	934	590.7	965	600.6
Central Western Sydney	2,599	918.5	2,634	916.2	2,684	923.6
Outer Western Sydney	2,730	894.8	2,996	973.5	2,719	872.1
Blacktown – Baulkham Hills	3,342	899.9	3,522	930.9	3,711	955.2
Lower Northern Sydney	1,040	367.4	1,100	385.1	1,132	390.0
Hornsby – Ku-ring-gai	596	236.4	664	261.4	569	221.5
Northern Beaches	1,005	446.5	1,062	469.4	1,128	494.2
Gosford – Wyong	2,104	762.0	2,144	763.3	2,351	817.8
Hunter	4,325	770.0	4,366	770.6	4,387	765.9
Illawarra	3,013	799.2	3,450	907.5	3,432	890.3
Richmond – Tweed	1,738	853.4	2,147	1,039.8	2,019	964.7
Mid-North Coast	2,413	910.1	2,940	1,095.6	2,866	1,056.3
Northern	1,893	1,068.6	2,129	1,212.0	2,073	1,184.9
North Western	2,364	2,014.0	2,655	2,269.3	2,366	2,012.1
Central West	1,512	876.5	1,724	999.0	2,018	1,164.4
South Eastern	1,544	858.7	1,787	990.8	1,811	997.2
Murrumbidgee	1,290	865.5	1,637	1,099.8	1,709	1,147.2
Murray	1,070	965.8	1,078	968.9	1,079	974.5
Far West	602	2,418.8	600	2,441.8	633	2,610.8
New South Wales*	54,303	865.7	58,672	926.4	57,559	897.7

* The total for New South Wales includes 1,004 recorded incidents in 1997, 1,297 recorded incidents in 1998 and 1,150 recorded incidents in 1999 where the offence occurred in a custodial institution.

TABLE 3.3 RECORDED CRIMINAL INCIDENTS, 1997 TO 1999: STATISTICAL DIVISION**SEXUAL ASSAULT**

<i>Statistical Division where offence occurred</i>	<i>Recorded criminal incidents</i>					
	<i>1997</i>		<i>1998</i>		<i>1999</i>	
	<i>Number</i>	<i>Rate per 100,000 population</i>	<i>Number</i>	<i>Rate per 100,000 population</i>	<i>Number</i>	<i>Rate per 100,000 population</i>
Sydney	1,982	50.4	1,743	43.8	1,652	40.9
Inner Sydney	245	88.9	224	79.6	201	70.1
Eastern Suburbs	91	37.4	77	31.6	66	26.8
St George – Sutherland	117	28.1	126	30.0	103	24.2
Canterbury – Bankstown	122	39.9	104	33.8	170	55.1
Fairfield – Liverpool	172	53.7	145	44.3	120	35.9
Outer South Western Sydney	158	72.2	172	77.3	144	63.6
Inner Western Sydney	66	42.2	42	26.6	55	34.2
Central Western Sydney	170	60.1	133	46.3	127	43.7
Outer Western Sydney	219	71.8	174	56.5	158	50.7
Blacktown – Baulkham Hills	242	65.2	246	65.0	185	47.6
Lower Northern Sydney	67	23.7	55	19.3	68	23.4
Hornsby – Ku-ring-gai	46	18.2	38	15.0	47	18.3
Northern Beaches	122	54.2	68	30.1	52	22.8
Gosford – Wyong	145	52.5	139	49.5	156	54.3
Hunter	409	72.8	386	68.1	267	46.6
Illawarra	191	50.7	220	57.9	150	38.9
Richmond – Tweed	131	64.3	151	73.1	79	37.7
Mid-North Coast	167	63.0	131	48.8	136	50.1
Northern	80	45.2	105	59.8	113	64.6
North Western	130	110.8	98	83.8	94	79.9
Central West	137	79.4	116	67.2	129	74.4
South Eastern	108	60.1	102	56.6	87	47.9
Murrumbidgee	133	89.2	93	62.5	120	80.6
Murray	76	68.6	78	70.1	68	61.4
Far West	33	132.6	36	146.5	31	127.9
New South Wales*	3,601	57.4	3,291	52.0	2,956	46.1

* The total for New South Wales includes 24 recorded incidents in 1997, 32 recorded incidents in 1998 and 30 recorded incidents in 1999 where the offence occurred in a custodial institution.

TABLE 3.4 RECORDED CRIMINAL INCIDENTS, 1997 TO 1999: STATISTICAL DIVISION**INDECENT ASSAULT, ACT OF INDECENCY, OTHER SEXUAL OFFENCES**

<i>Statistical Division where offence occurred</i>	<i>Recorded criminal incidents</i>					
	<i>1997</i>		<i>1998</i>		<i>1999</i>	
	<i>Number</i>	<i>Rate per 100,000 population</i>	<i>Number</i>	<i>Rate per 100,000 population</i>	<i>Number</i>	<i>Rate per 100,000 population</i>
Sydney	3,385	86.1	2,989	75.1	2,559	63.3
Inner Sydney	417	151.4	378	134.3	310	108.2
Eastern Suburbs	129	53.0	143	58.8	102	41.4
St George – Sutherland	289	69.3	299	71.1	192	45.1
Canterbury – Bankstown	209	68.3	196	63.7	167	54.2
Fairfield – Liverpool	223	69.6	224	68.4	190	56.9
Outer South Western Sydney	201	91.8	235	105.6	201	88.8
Inner Western Sydney	138	88.1	103	65.1	110	68.5
Central Western Sydney	275	97.2	232	80.7	195	67.1
Outer Western Sydney	309	101.3	280	91.0	221	70.9
Blacktown – Baulkham Hills	330	88.9	295	78.0	220	56.6
Lower Northern Sydney	253	89.4	161	56.4	149	51.3
Hornsby – Ku-ring-gai	146	57.9	119	46.8	124	48.3
Northern Beaches	222	98.6	142	62.8	126	55.2
Gosford – Wyong	244	88.4	182	64.8	252	87.7
Hunter	648	115.4	506	89.3	360	62.8
Illawarra	352	93.4	315	82.9	254	65.9
Richmond – Tweed	168	82.5	222	107.5	162	77.4
Mid-North Coast	407	153.5	281	104.7	177	65.2
Northern	148	83.5	194	110.4	228	130.3
North Western	251	213.8	142	121.4	153	130.1
Central West	174	100.9	160	92.7	149	86.0
South Eastern	263	146.3	193	107.0	152	83.7
Murrumbidgee	193	129.5	180	120.9	148	99.4
Murray	93	83.9	83	74.6	88	79.5
Far West	63	253.1	27	109.9	28	115.5
New South Wales*	6,156	98.1	5,310	83.8	4,483	69.9

* The total for New South Wales includes 11 recorded incidents in 1997, 18 recorded incidents in 1998 and 25 recorded incidents in 1999 where the offence occurred in a custodial institution.

TABLE 3.5 RECORDED CRIMINAL INCIDENTS, 1997 TO 1999: STATISTICAL DIVISION**ROBBERY WITHOUT A WEAPON**

<i>Statistical Division where offence occurred</i>	<i>Recorded criminal incidents</i>					
	<i>1997</i>		<i>1998</i>		<i>1999</i>	
	<i>Number</i>	<i>Rate per 100,000 population</i>	<i>Number</i>	<i>Rate per 100,000 population</i>	<i>Number</i>	<i>Rate per 100,000 population</i>
Sydney	5,692	144.7	5,533	139.0	5,560	137.6
Inner Sydney	1,859	674.7	1,766	627.6	1,697	592.1
Eastern Suburbs	264	108.4	229	94.1	242	98.3
St George – Sutherland	315	75.6	332	79.0	388	91.2
Canterbury – Bankstown	491	160.5	605	196.5	680	220.5
Fairfield – Liverpool	520	162.2	615	187.7	544	162.9
Outer South Western Sydney	264	120.6	240	107.9	243	107.4
Inner Western Sydney	293	187.2	230	145.5	245	152.5
Central Western Sydney	546	193.0	465	161.7	514	176.9
Outer Western Sydney	255	83.6	220	71.5	222	71.2
Blacktown – Baulkham Hills	452	121.7	323	85.4	322	82.9
Lower Northern Sydney	190	67.1	227	79.5	179	61.7
Hornsby – Ku-ring-gai	65	25.8	83	32.7	93	36.2
Northern Beaches	84	37.3	101	44.6	86	37.7
Gosford – Wyong	94	34.0	97	34.5	105	36.5
Hunter	252	44.9	279	49.2	231	40.3
Illawarra	147	39.0	193	50.8	167	43.3
Richmond – Tweed	39	19.1	70	33.9	64	30.6
Mid-North Coast	80	30.2	104	38.8	76	28.0
Northern	54	30.5	84	47.8	63	36.0
North Western	62	52.8	72	61.5	78	66.3
Central West	48	27.8	61	35.3	61	35.2
South Eastern	25	13.9	40	22.2	37	20.4
Murrumbidgee	60	40.3	36	24.2	41	27.5
Murray	17	15.3	23	20.7	24	21.7
Far West	8	32.1	7	28.5	8	33.0
New South Wales*	6,487	103.4	6,503	102.7	6,413	100.0

* The total for New South Wales includes 3 recorded incidents in 1997, 1 recorded incident in 1998 and 3 recorded incidents in 1999 where the offence occurred in a custodial institution.

TABLE 3.6 RECORDED CRIMINAL INCIDENTS, 1997 TO 1999: STATISTICAL DIVISION**ROBBERY WITH A FIREARM**

<i>Statistical Division where offence occurred</i>	<i>Recorded criminal incidents</i>					
	<i>1997</i>		<i>1998</i>		<i>1999</i>	
	<i>Number</i>	<i>Rate per 100,000 population</i>	<i>Number</i>	<i>Rate per 100,000 population</i>	<i>Number</i>	<i>Rate per 100,000 population</i>
Sydney	1,001	25.4	827	20.8	623	15.4
Inner Sydney	177	64.2	155	55.1	113	39.4
Eastern Suburbs	31	12.7	42	17.3	46	18.7
St George – Sutherland	97	23.3	65	15.5	51	12.0
Canterbury – Bankstown	121	39.6	99	32.2	90	29.2
Fairfield – Liverpool	116	36.2	96	29.3	78	23.4
Outer South Western Sydney	22	10.0	46	20.7	24	10.6
Inner Western Sydney	79	50.5	40	25.3	36	22.4
Central Western Sydney	103	36.4	81	28.2	51	17.5
Outer Western Sydney	47	15.4	47	15.3	21	6.7
Blacktown – Baulkham Hills	77	20.7	54	14.3	24	6.2
Lower Northern Sydney	51	18.0	35	12.3	29	10.0
Hornsby – Ku-ring-gai	31	12.3	17	6.7	24	9.3
Northern Beaches	16	7.1	16	7.1	8	3.5
Gosford – Wyong	33	12.0	34	12.1	28	9.7
Hunter	56	10.0	33	5.8	34	5.9
Illawarra	19	5.0	33	8.7	16	4.2
Richmond – Tweed	24	11.8	2	1.0	6	2.9
Mid-North Coast	3	1.1	6	2.2	6	2.2
Northern	2	1.1	6	3.4	4	2.3
North Western	12	10.2	3	2.6	0	0.0
Central West	7	4.1	4	2.3	2	1.2
South Eastern	4	2.2	2	1.1	1	0.6
Murrumbidgee	4	2.7	3	2.0	3	2.0
Murray	5	4.5	0	0.0	1	0.9
Far West	2	8.0	0	0.0	0	0.0
New South Wales	1,139	18.2	919	14.5	696	10.9

TABLE 3.7 RECORDED CRIMINAL INCIDENTS, 1997 TO 1999: STATISTICAL DIVISION**ROBBERY WITH A WEAPON NOT A FIREARM**

<i>Statistical Division where offence occurred</i>	<i>Recorded criminal incidents</i>					
	<i>1997</i>		<i>1998</i>		<i>1999</i>	
	<i>Number</i>	<i>Rate per 100,000 population</i>	<i>Number</i>	<i>Rate per 100,000 population</i>	<i>Number</i>	<i>Rate per 100,000 population</i>
Sydney	2,978	75.7	3,857	96.9	3,071	76.0
Inner Sydney	965	350.2	1,119	397.7	771	269.0
Eastern Suburbs	121	49.7	216	88.8	118	47.9
St George – Sutherland	205	49.2	261	62.1	200	47.0
Canterbury – Bankstown	274	89.6	429	139.3	487	157.9
Fairfield – Liverpool	305	95.1	439	134.0	400	119.8
Outer South Western Sydney	99	45.2	130	58.4	99	43.7
Inner Western Sydney	203	129.7	229	144.8	177	110.2
Central Western Sydney	270	95.4	321	111.7	306	105.3
Outer Western Sydney	102	33.4	144	46.8	75	24.1
Blacktown – Baulkham Hills	175	47.1	174	46.0	129	33.2
Lower Northern Sydney	129	45.6	178	62.3	126	43.4
Hornsby – Ku-ring-gai	51	20.2	60	23.6	73	28.4
Northern Beaches	38	16.9	57	25.2	46	20.2
Gosford – Wyong	41	14.8	100	35.6	64	22.3
Hunter	134	23.9	221	39.0	186	32.5
Illawarra	91	24.1	137	36.0	91	23.6
Richmond – Tweed	28	13.7	18	8.7	21	10.0
Mid-North Coast	32	12.1	27	10.1	30	11.1
Northern	24	13.5	27	15.4	19	10.9
North Western	29	24.7	38	32.5	34	28.9
Central West	33	19.1	23	13.3	19	11.0
South Eastern	15	8.3	8	4.4	23	12.7
Murrumbidgee	8	5.4	13	8.7	10	6.7
Murray	7	6.3	11	9.9	5	4.5
Far West	1	4.0	2	8.1	6	24.7
New South Wales*	3,381	53.9	4,382	69.2	3,515	54.8

* The total for New South Wales includes 1 recorded incident in 1997 where the offence occurred in a custodial institution.

TABLE 3.8 RECORDED CRIMINAL INCIDENTS, 1997 TO 1999: STATISTICAL DIVISION**BREAK AND ENTER – DWELLING**

<i>Statistical Division where offence occurred</i>	<i>Recorded criminal incidents</i>					
	<i>1997</i>		<i>1998</i>		<i>1999</i>	
	<i>Number</i>	<i>Rate per 100,000 population</i>	<i>Number</i>	<i>Rate per 100,000 population</i>	<i>Number</i>	<i>Rate per 100,000 population</i>
Sydney	56,755	1,442.8	57,525	1,444.8	51,387	1,271.5
Inner Sydney	5,747	2,085.9	6,918	2,458.4	5,134	1,791.4
Eastern Suburbs	2,758	1,132.1	3,584	1,472.8	2,833	1,150.5
St George – Sutherland	4,622	1,109.0	5,254	1,249.7	4,473	1,051.4
Canterbury – Bankstown	5,383	1,759.8	5,432	1,764.3	4,228	1,371.1
Fairfield – Liverpool	5,686	1,773.7	5,056	1,543.5	4,598	1,376.7
Outer South Western Sydney	3,727	1,702.1	3,711	1,668.2	3,726	1,646.2
Inner Western Sydney	2,910	1,858.8	2,749	1,738.6	2,332	1,451.3
Central Western Sydney	5,452	1,926.8	5,039	1,752.8	5,159	1,775.3
Outer Western Sydney	3,439	1,127.1	3,514	1,141.8	3,081	988.2
Blacktown – Baulkham Hills	4,972	1,338.9	4,892	1,293.0	4,273	1,099.9
Lower Northern Sydney	3,698	1,306.2	3,729	1,305.4	3,913	1,348.1
Hornsby – Ku-ring-gai	2,292	909.3	2,387	939.6	2,080	809.7
Northern Beaches	2,327	1,033.8	1,897	838.4	1,915	839.1
Gosford – Wyong	3,742	1,355.1	3,363	1,197.3	3,642	1,266.9
Hunter	5,070	902.6	6,852	1,209.4	6,992	1,220.7
Illawarra	5,111	1,355.6	6,405	1,684.8	5,645	1,464.4
Richmond – Tweed	1,770	869.1	2,139	1,035.9	1,828	873.5
Mid-North Coast	2,104	793.5	2,948	1,098.5	2,524	930.2
Northern	1,627	918.4	2,130	1,212.6	1,780	1,017.4
North Western	1,901	1,619.6	2,018	1,724.9	1,686	1,433.8
Central West	1,727	1,001.2	1,923	1,114.3	1,948	1,124.0
South Eastern	1,362	757.5	1,527	846.6	1,471	810.0
Murrumbidgee	1,252	840.0	1,149	771.9	948	636.4
Murray	812	732.9	774	695.6	677	611.4
Far West	347	1,394.2	378	1,538.3	292	1,204.4
New South Wales	79,838	1,272.8	85,768	1,354.2	77,178	1,203.7

TABLE 3.9 RECORDED CRIMINAL INCIDENTS, 1997 TO 1999: STATISTICAL DIVISION**BREAK AND ENTER – NON-DWELLING**

<i>Statistical Division where offence occurred</i>	<i>Recorded criminal incidents</i>					
	<i>1997</i>		<i>1998</i>		<i>1999</i>	
	<i>Number</i>	<i>Rate per 100,000 population</i>	<i>Number</i>	<i>Rate per 100,000 population</i>	<i>Number</i>	<i>Rate per 100,000 population</i>
Sydney	25,124	638.7	26,079	655.0	25,227	624.2
Inner Sydney	3,987	1,447.1	4,692	1,667.4	4,572	1,595.3
Eastern Suburbs	971	398.6	1,225	503.4	1,076	437.0
St George – Sutherland	1,686	404.5	1,626	386.8	1,854	435.8
Canterbury – Bankstown	1,898	620.5	1,948	632.7	1,666	540.3
Fairfield – Liverpool	2,145	669.1	2,115	645.7	1,955	585.4
Outer South Western Sydney	1,562	713.4	1,412	634.7	1,324	585.0
Inner Western Sydney	998	637.5	902	570.5	969	603.1
Central Western Sydney	2,302	813.5	2,222	772.9	2,208	759.8
Outer Western Sydney	2,026	664.0	2,051	666.4	1,646	527.9
Blacktown – Baulkham Hills	1,829	492.5	1,787	472.3	1,781	458.4
Lower Northern Sydney	1,895	669.4	1,944	680.5	1,930	664.9
Hornsby – Ku-ring-gai	810	321.3	762	300.0	946	368.3
Northern Beaches	1,161	515.8	1,308	578.1	1,140	499.5
Gosford – Wyong	1,854	671.4	2,085	742.3	2,160	751.4
Hunter	5,243	933.4	6,181	1,090.9	6,225	1,086.8
Illawarra	3,240	859.4	4,262	1,121.1	3,095	802.9
Richmond – Tweed	1,546	759.1	1,444	699.3	1,317	629.3
Mid-North Coast	2,119	799.2	2,312	861.5	2,089	769.9
Northern	1,563	882.3	1,775	1,010.5	1,645	940.2
North Western	1,265	1,077.7	1,608	1,374.4	1,190	1,012.0
Central West	1,518	880.0	1,554	900.5	1,367	788.8
South Eastern	1,746	971.1	1,356	751.8	1,310	721.3
Murrumbidgee	941	631.3	970	651.7	1,019	684.0
Murray	879	793.4	911	818.8	819	739.7
Far West	262	1,052.7	308	1,253.5	226	932.2
New South Wales*	45,467	724.8	48,772	770.1	45,551	710.4

* The total for New South Wales includes 21 recorded incidents in 1997, 12 recorded incidents in 1998 and 22 recorded incidents in 1999 where the offence occurred in a custodial institution.

TABLE 3.10 RECORDED CRIMINAL INCIDENTS, 1997 TO 1999: STATISTICAL DIVISION**RECEIVING, GOODS IN CUSTODY**

<i>Statistical Division where offence occurred</i>	<i>Recorded criminal incidents</i>					
	<i>1997</i>		<i>1998</i>		<i>1999</i>	
	<i>Number</i>	<i>Rate per 100,000 population</i>	<i>Number</i>	<i>Rate per 100,000 population</i>	<i>Number</i>	<i>Rate per 100,000 population</i>
Sydney	6,255	159.0	7,618	191.3	7,632	188.8
Inner Sydney	1,620	588.0	1,952	693.7	1,854	646.9
Eastern Suburbs	214	87.8	316	129.9	264	107.2
St George – Sutherland	286	68.6	391	93.0	410	96.4
Canterbury – Bankstown	367	120.0	408	132.5	544	176.4
Fairfield – Liverpool	1,086	338.8	1,407	429.5	1,264	378.5
Outer South Western Sydney	369	168.5	497	223.4	435	192.2
Inner Western Sydney	198	126.5	221	139.8	265	164.9
Central Western Sydney	466	164.7	561	195.1	619	213.0
Outer Western Sydney	366	120.0	395	128.3	391	125.4
Blacktown – Baulkham Hills	559	150.5	566	149.6	709	182.5
Lower Northern Sydney	194	68.5	248	86.8	250	86.1
Hornsby – Ku-ring-gai	123	48.8	131	51.6	129	50.2
Northern Beaches	130	57.8	176	77.8	147	64.4
Gosford – Wyong	277	100.3	349	124.2	351	122.1
Hunter	498	88.7	692	122.1	900	157.1
Illawarra	477	126.5	616	162.0	545	141.4
Richmond – Tweed	231	113.4	267	129.3	356	170.1
Mid-North Coast	313	118.0	412	153.5	361	133.0
Northern	147	83.0	205	116.7	242	138.3
North Western	258	219.8	379	323.9	437	371.6
Central West	259	150.1	330	191.2	284	163.9
South Eastern	241	134.0	267	148.0	238	131.1
Murrumbidgee	167	112.0	166	111.5	185	124.2
Murray	273	246.4	169	151.9	133	120.1
Far West	49	196.9	77	313.4	57	235.1
New South Wales*	9,174	146.3	11,206	176.9	11,378	177.5

* The total for New South Wales includes 6 recorded incidents in 1997, 8 recorded incidents in 1998 and 8 recorded incidents in 1999 where the offence occurred in a custodial institution.

TABLE 3.11 RECORDED CRIMINAL INCIDENTS, 1997 TO 1999: STATISTICAL DIVISION**MOTOR VEHICLE THEFT**

<i>Statistical Division where offence occurred</i>	<i>Recorded criminal incidents</i>					
	<i>1997</i>		<i>1998</i>		<i>1999</i>	
	<i>Number</i>	<i>Rate per 100,000 population</i>	<i>Number</i>	<i>Rate per 100,000 population</i>	<i>Number</i>	<i>Rate per 100,000 population</i>
Sydney	44,652	1,135.1	41,657	1,046.2	36,222	896.3
Inner Sydney	6,470	2,348.3	6,398	2,273.6	4,773	1,665.4
Eastern Suburbs	2,747	1,127.6	2,764	1,135.8	1,984	805.7
St George – Sutherland	3,589	861.1	3,700	880.1	3,203	752.9
Canterbury – Bankstown	5,071	1,657.8	4,451	1,445.7	3,722	1,207.0
Fairfield – Liverpool	4,566	1,424.3	4,348	1,327.4	4,078	1,221.0
Outer South Western Sydney	2,648	1,209.4	2,392	1,075.2	2,259	998.1
Inner Western Sydney	2,134	1,363.1	1,882	1,190.3	1,571	977.7
Central Western Sydney	4,179	1,476.9	3,553	1,235.9	3,580	1,231.9
Outer Western Sydney	3,239	1,061.6	2,695	875.7	2,433	780.4
Blacktown – Baulkham Hills	4,428	1,192.4	3,700	977.9	3,316	853.5
Lower Northern Sydney	2,007	708.9	2,016	705.8	1,612	555.4
Hornsby – Ku-ring-gai	796	315.8	648	255.1	585	227.7
Northern Beaches	870	386.5	984	434.9	970	425.0
Gosford – Wyong	1,908	691.0	2,126	756.9	2,136	743.0
Hunter	3,051	543.2	3,884	685.5	3,713	648.2
Illawarra	3,416	906.0	3,582	942.2	3,726	966.6
Richmond – Tweed	763	374.6	818	396.1	868	414.8
Mid-North Coast	872	328.9	958	357.0	890	328.0
Northern	330	186.3	407	231.7	408	233.2
North Western	548	466.9	556	475.2	487	414.2
Central West	670	388.4	593	343.6	518	298.9
South Eastern	463	257.5	629	348.7	490	269.8
Murrumbidgee	391	262.3	361	242.5	526	353.1
Murray	301	271.7	328	294.8	299	270.0
Far West	93	373.7	87	354.1	73	301.1
New South Wales*	55,556	885.7	53,866	850.5	48,224	752.1

* The total for New South Wales includes 6 recorded incidents in 1997, 6 recorded incidents in 1998 and 4 recorded incidents in 1999 where the offence occurred in a custodial institution.

TABLE 3.12 RECORDED CRIMINAL INCIDENTS, 1997 TO 1999: STATISTICAL DIVISION**STEAL FROM MOTOR VEHICLE**

<i>Statistical Division where offence occurred</i>	<i>Recorded criminal incidents</i>					
	<i>1997</i>		<i>1998</i>		<i>1999</i>	
	<i>Number</i>	<i>Rate per 100,000 population</i>	<i>Number</i>	<i>Rate per 100,000 population</i>	<i>Number</i>	<i>Rate per 100,000 population</i>
Sydney	51,887	1,319.0	53,244	1,337.2	55,171	1,365.2
Inner Sydney	12,445	4,516.9	12,852	4,567.2	12,589	4,392.7
Eastern Suburbs	3,607	1,480.6	3,659	1,503.6	3,865	1,569.6
St George – Sutherland	4,686	1,124.3	4,727	1,124.3	4,497	1,057.0
Canterbury – Bankstown	4,111	1,343.9	4,207	1,366.4	3,761	1,219.7
Fairfield – Liverpool	3,479	1,085.2	3,434	1,048.3	4,178	1,250.9
Outer South Western Sydney	2,080	949.9	2,031	913.0	2,073	915.9
Inner Western Sydney	2,335	1,491.5	2,230	1,410.3	2,088	1,299.5
Central Western Sydney	4,245	1,500.2	3,792	1,319.0	4,096	1,409.5
Outer Western Sydney	3,188	1,044.9	2,818	915.6	3,318	1,064.2
Blacktown – Baulkham Hills	2,782	749.1	3,207	847.6	3,748	964.7
Lower Northern Sydney	3,847	1,358.9	3,829	1,340.4	4,487	1,545.8
Hornsby – Ku-ring-gai	1,194	473.7	1,461	575.1	1,546	601.8
Northern Beaches	1,760	781.9	2,727	1,205.2	2,582	1,131.3
Gosford – Wyong	2,128	770.6	2,270	808.1	2,343	815.0
Hunter	4,802	854.9	5,570	983.1	6,016	1,050.3
Illawarra	3,809	1,010.3	4,994	1,313.6	4,955	1,285.4
Richmond – Tweed	1,972	968.3	2,002	969.5	1,727	825.2
Mid-North Coast	1,668	629.1	2,429	905.1	2,052	756.3
Northern	1,400	790.3	1,445	822.6	1,316	752.2
North Western	1,107	943.1	1,227	1,048.8	1,255	1,067.3
Central West	1,217	705.5	1,283	743.5	1,272	734.0
South Eastern	1,259	700.2	1,634	905.9	1,621	892.6
Murrumbidgee	926	621.3	802	538.8	1,070	718.3
Murray	801	723.0	621	558.1	686	619.5
Far West	226	908.1	239	972.7	273	1,126.0
New South Wales*	71,079	1,133.1	75,497	1,192.0	77,415	1,207.4

* The total for New South Wales includes 5 recorded incidents in 1997, 7 recorded incidents in 1998 and 1 recorded incident in 1999 where the offence occurred in a custodial institution.

TABLE 3.13 RECORDED CRIMINAL INCIDENTS, 1997 TO 1999: STATISTICAL DIVISION**STEAL FROM RETAIL STORE**

<i>Statistical Division where offence occurred</i>	<i>Recorded criminal incidents</i>					
	<i>1997</i>		<i>1998</i>		<i>1999</i>	
	<i>Number</i>	<i>Rate per 100,000 population</i>	<i>Number</i>	<i>Rate per 100,000 population</i>	<i>Number</i>	<i>Rate per 100,000 population</i>
Sydney	14,408	366.3	13,750	345.3	13,513	334.4
Inner Sydney	2,272	824.6	2,403	853.9	2,297	801.5
Eastern Suburbs	767	314.8	762	313.1	757	307.4
St George – Sutherland	1,204	288.9	1,130	268.8	1,123	264.0
Canterbury – Bankstown	931	304.4	908	294.9	918	297.7
Fairfield – Liverpool	1,456	454.2	1,260	384.7	1,185	354.8
Outer South Western Sydney	797	364.0	695	312.4	760	335.8
Inner Western Sydney	543	346.8	607	383.9	408	253.9
Central Western Sydney	1,569	554.5	1,484	516.2	1,437	494.5
Outer Western Sydney	944	309.4	925	300.6	1,114	357.3
Blacktown – Baulkham Hills	1,121	301.9	1,127	297.9	1,267	326.1
Lower Northern Sydney	889	314.0	877	307.0	816	281.1
Hornsby – Ku-ring-gai	445	176.5	336	132.3	277	107.8
Northern Beaches	499	221.7	502	221.9	469	205.5
Gosford – Wyong	971	351.6	734	261.3	685	238.3
Hunter	1,798	320.1	1,492	263.3	1,444	252.1
Illawarra	1,145	303.7	1,364	358.8	1,328	344.5
Richmond – Tweed	690	338.8	728	352.6	775	370.3
Mid-North Coast	962	362.8	1,121	417.7	1,102	406.1
Northern	516	291.3	501	285.2	450	257.2
North Western	374	318.6	486	415.4	512	435.4
Central West	439	254.5	518	300.2	600	346.2
South Eastern	394	219.1	432	239.5	477	262.7
Murrumbidgee	370	248.2	353	237.2	406	272.5
Murray	339	306.0	305	274.1	262	236.6
Far West	57	229.0	62	252.3	78	321.7
New South Wales	21,492	342.6	21,112	333.3	20,947	326.7

TABLE 3.14 RECORDED CRIMINAL INCIDENTS, 1997 TO 1999: STATISTICAL DIVISION**STEAL FROM DWELLING**

<i>Statistical Division where offence occurred</i>	<i>Recorded criminal incidents</i>					
	<i>1997</i>		<i>1998</i>		<i>1999</i>	
	<i>Number</i>	<i>Rate per 100,000 population</i>	<i>Number</i>	<i>Rate per 100,000 population</i>	<i>Number</i>	<i>Rate per 100,000 population</i>
Sydney	15,079	383.3	16,105	404.5	15,855	392.3
Inner Sydney	1,824	662.0	2,321	824.8	2,092	730.0
Eastern Suburbs	1,000	410.5	1,073	440.9	1,148	466.2
St George – Sutherland	1,215	291.5	1,361	323.7	1,315	309.1
Canterbury – Bankstown	788	257.6	855	277.7	743	240.9
Fairfield – Liverpool	904	282.0	1,020	311.4	1,098	328.8
Outer South Western Sydney	1,056	482.3	1,136	510.7	1,191	526.2
Inner Western Sydney	494	315.5	533	337.1	550	342.3
Central Western Sydney	892	315.2	860	299.1	934	321.4
Outer Western Sydney	1,296	424.8	1,278	415.3	1,224	392.6
Blacktown – Baulkham Hills	1,484	399.6	1,337	353.4	1,508	388.2
Lower Northern Sydney	918	324.3	1,017	356.0	1,060	365.2
Hornsby – Ku-ring-gai	709	281.3	818	322.0	819	318.8
Northern Beaches	852	378.5	957	422.9	837	366.7
Gosford – Wyong	1,647	596.5	1,539	547.9	1,336	464.7
Hunter	3,273	582.7	3,376	595.9	3,397	593.0
Illawarra	1,991	528.1	2,124	558.7	1,929	500.4
Richmond – Tweed	1,253	615.2	1,426	690.6	1,386	662.3
Mid-North Coast	1,449	546.5	1,676	624.5	1,542	568.3
Northern	976	550.9	1,113	633.6	1,151	657.9
North Western	791	673.9	923	788.9	852	724.6
Central West	1,010	585.5	1,224	709.3	1,232	710.9
South Eastern	874	486.1	1,061	588.3	1,012	557.2
Murrumbidgee	850	570.3	882	592.5	875	587.4
Murray	781	705.0	800	719.0	661	597.0
Far West	259	1,040.7	274	1,115.1	249	1,027.0
New South Wales	28,586	455.7	30,984	489.2	30,141	470.1

TABLE 3.15 RECORDED CRIMINAL INCIDENTS, 1997 TO 1999: STATISTICAL DIVISION**STEAL FROM PERSON**

<i>Statistical Division where offence occurred</i>	<i>Recorded criminal incidents</i>					
	<i>1997</i>		<i>1998</i>		<i>1999</i>	
	<i>Number</i>	<i>Rate per 100,000 population</i>	<i>Number</i>	<i>Rate per 100,000 population</i>	<i>Number</i>	<i>Rate per 100,000 population</i>
Sydney	9,326	237.1	9,877	248.1	10,004	247.5
Inner Sydney	3,735	1,355.6	4,417	1,569.7	4,343	1,515.4
Eastern Suburbs	564	231.5	567	233.0	596	242.0
St George – Sutherland	593	142.3	490	116.5	503	118.2
Canterbury – Bankstown	659	215.4	733	238.1	686	222.5
Fairfield – Liverpool	782	243.9	679	207.3	637	190.7
Outer South Western Sydney	257	117.4	251	112.8	225	99.4
Inner Western Sydney	482	307.9	487	308.0	564	351.0
Central Western Sydney	571	201.8	528	183.7	689	237.1
Outer Western Sydney	382	125.2	322	104.6	303	97.2
Blacktown – Baulkham Hills	456	122.8	395	104.4	422	108.6
Lower Northern Sydney	357	126.1	446	156.1	447	154.0
Hornsby – Ku-ring-gai	129	51.2	141	55.5	158	61.5
Northern Beaches	178	79.1	227	100.3	251	110.0
Gosford – Wyong	181	65.5	194	69.1	180	62.6
Hunter	384	68.4	416	73.4	360	62.8
Illawarra	334	88.6	404	106.3	367	95.2
Richmond – Tweed	158	77.6	189	91.5	135	64.5
Mid-North Coast	162	61.1	165	61.5	151	55.7
Northern	117	66.0	122	69.5	103	58.9
North Western	110	93.7	137	117.1	116	98.6
Central West	87	50.4	112	64.9	105	60.6
South Eastern	81	45.0	83	46.0	79	43.5
Murrumbidgee	43	28.9	53	35.6	49	32.9
Murray	33	29.8	43	38.6	52	47.0
Far West	26	104.5	29	118.0	19	78.4
New South Wales*	10,864	173.2	11,631	183.6	11,542	180.0

* The total for New South Wales includes 3 recorded incidents in 1997, 1 recorded incident in 1998 and 2 recorded incidents in 1999 where the offence occurred in a custodial institution.

TABLE 3.16 RECORDED CRIMINAL INCIDENTS, 1997 TO 1999: STATISTICAL DIVISION**FRAUD**

<i>Statistical Division where offence occurred</i>	<i>Recorded criminal incidents</i>					
	<i>1997</i>		<i>1998</i>		<i>1999</i>	
	<i>Number</i>	<i>Rate per 100,000 population</i>	<i>Number</i>	<i>Rate per 100,000 population</i>	<i>Number</i>	<i>Rate per 100,000 population</i>
Sydney	16,324	415.0	17,402	437.1	17,629	436.2
Inner Sydney	3,462	1,256.5	3,368	1,196.9	3,949	1,377.9
Eastern Suburbs	719	295.1	1,006	413.4	1,087	441.4
St George – Sutherland	1,110	266.3	1,098	261.2	1,189	279.5
Canterbury – Bankstown	1,201	392.6	1,112	361.2	1,171	379.7
Fairfield – Liverpool	1,416	441.7	1,538	469.5	1,749	523.7
Outer South Western Sydney	548	250.3	742	333.5	773	341.5
Inner Western Sydney	725	463.1	609	385.2	681	423.8
Central Western Sydney	1,421	502.2	1,368	475.9	1,508	518.9
Outer Western Sydney	1,025	335.9	907	294.7	938	300.9
Blacktown – Baulkham Hills	1,484	399.6	1,612	426.1	1,240	319.2
Lower Northern Sydney	1,492	527.0	1,565	547.9	1,307	450.3
Hornsby – Ku-ring-gai	337	133.7	438	172.4	384	149.5
Northern Beaches	714	317.2	879	388.5	612	268.2
Gosford – Wyong	670	242.6	1,160	413.0	1,041	362.1
Hunter	1,755	312.5	2,048	361.5	1,668	291.2
Illawarra	973	258.1	894	235.2	880	228.3
Richmond – Tweed	633	310.8	755	365.6	869	415.2
Mid-North Coast	712	268.5	1,117	416.2	1,157	426.4
Northern	700	395.1	857	487.9	712	407.0
North Western	426	362.9	555	474.4	491	417.6
Central West	424	245.8	546	316.4	590	340.4
South Eastern	611	339.8	697	386.4	526	289.6
Murrumbidgee	723	485.1	783	526.0	761	510.8
Murray	558	503.7	514	462.0	458	413.6
Far West	86	345.5	49	199.4	72	297.0
New South Wales*	23,933	381.5	26,224	414.1	25,835	402.9

* The total for New South Wales includes 8 recorded incidents in 1997, 7 recorded incidents in 1998 and 22 recorded incidents in 1999 where the offence occurred in a custodial institution.

TABLE 3.17 RECORDED CRIMINAL INCIDENTS, 1997 TO 1999: STATISTICAL DIVISION**MALICIOUS DAMAGE TO PROPERTY**

<i>Statistical Division where offence occurred</i>	<i>Recorded criminal incidents</i>					
	<i>1997</i>		<i>1998</i>		<i>1999</i>	
	<i>Number</i>	<i>Rate per 100,000 population</i>	<i>Number</i>	<i>Rate per 100,000 population</i>	<i>Number</i>	<i>Rate per 100,000 population</i>
Sydney	47,612	1,210.4	52,660	1,322.6	52,585	1,301.2
Inner Sydney	6,192	2,247.4	6,629	2,355.7	6,497	2,267.0
Eastern Suburbs	2,314	949.8	2,542	1,044.6	2,765	1,122.9
St George – Sutherland	4,737	1,136.5	5,182	1,232.6	5,398	1,268.8
Canterbury – Bankstown	3,221	1,053.0	3,609	1,172.2	3,633	1,178.2
Fairfield – Liverpool	3,191	995.4	3,431	1,047.4	3,939	1,179.4
Outer South Western Sydney	4,149	1,894.9	4,340	1,950.9	4,472	1,975.8
Inner Western Sydney	1,470	939.0	1,604	1,014.4	1,556	968.4
Central Western Sydney	3,264	1,153.5	3,381	1,176.1	3,189	1,097.4
Outer Western Sydney	4,409	1,445.1	5,481	1,780.9	5,016	1,608.9
Blacktown – Baulkham Hills	4,686	1,261.9	5,274	1,394.0	5,101	1,313.0
Lower Northern Sydney	2,419	854.5	2,692	942.4	2,749	947.1
Hornsby – Ku-ring-gai	1,850	733.9	2,405	946.7	2,157	839.7
Northern Beaches	2,315	1,028.5	2,288	1,011.2	2,294	1,005.1
Gosford – Wyong	3,395	1,229.5	3,802	1,353.5	3,819	1,328.4
Hunter	7,064	1,257.6	7,932	1,400.0	8,516	1,486.7
Illawarra	5,680	1,506.5	6,852	1,802.3	7,187	1,864.4
Richmond – Tweed	2,121	1,041.5	2,528	1,224.3	2,562	1,224.2
Mid-North Coast	3,190	1,203.1	3,820	1,423.5	4,006	1,476.4
Northern	2,662	1,502.7	3,195	1,818.9	3,390	1,937.6
North Western	2,150	1,831.7	2,515	2,149.7	2,348	1,996.8
Central West	2,374	1,376.2	2,679	1,552.4	2,960	1,708.0
South Eastern	2,379	1,323.1	2,842	1,575.7	3,094	1,703.7
Murrumbidgee	2,022	1,356.6	2,373	1,594.2	2,589	1,738.0
Murray	1,804	1,628.4	1,536	1,380.5	1,643	1,483.8
Far West	531	2,133.6	569	2,315.6	591	2,437.6
New South Wales*	79,731	1,271.1	89,685	1,416.0	91,577	1,428.3

* The total for New South Wales includes 142 recorded incidents in 1997, 184 recorded incidents in 1998 and 106 recorded incidents in 1999 where the offence occurred in a custodial institution.

TABLE 3.18 RECORDED CRIMINAL INCIDENTS, 1997 TO 1999: STATISTICAL DIVISION**POSSESSION AND/OR USE OF COCAINE**

<i>Statistical Division where offence occurred</i>	<i>Recorded criminal incidents</i>					
	<i>1997</i>		<i>1998</i>		<i>1999</i>	
	<i>Number</i>	<i>Rate per 100,000 population</i>	<i>Number</i>	<i>Rate per 100,000 population</i>	<i>Number</i>	<i>Rate per 100,000 population</i>
Sydney	140	3.6	260	6.5	183	4.5
Inner Sydney	95	34.5	166	59.0	99	34.5
Eastern Suburbs	12	4.9	23	9.5	10	4.1
St George – Sutherland	7	1.7	9	2.1	7	1.6
Canterbury – Bankstown	4	1.3	13	4.2	5	1.6
Fairfield – Liverpool	2	0.6	13	4.0	30	9.0
Outer South Western Sydney	1	0.5	0	0.0	0	0.0
Inner Western Sydney	3	1.9	10	6.3	5	3.1
Central Western Sydney	3	1.1	5	1.7	7	2.4
Outer Western Sydney	1	0.3	3	1.0	2	0.6
Blacktown – Baulkham Hills	5	1.3	1	0.3	2	0.5
Lower Northern Sydney	3	1.1	8	2.8	11	3.8
Hornsby – Ku-ring-gai	2	0.8	2	0.8	0	0.0
Northern Beaches	2	0.9	5	2.2	1	0.4
Gosford – Wyong	0	0.0	2	0.7	4	1.4
Hunter	1	0.2	0	0.0	2	0.3
Illawarra	3	0.8	1	0.3	2	0.5
Richmond – Tweed	5	2.5	7	3.4	1	0.5
Mid-North Coast	0	0.0	1	0.4	2	0.7
Northern	1	0.6	1	0.6	0	0.0
North Western	0	0.0	0	0.0	0	0.0
Central West	1	0.6	0	0.0	1	0.6
South Eastern	1	0.6	2	1.1	2	1.1
Murrumbidgee	0	0.0	2	1.3	1	0.7
Murray	1	0.9	0	0.0	1	0.9
Far West	0	0.0	0	0.0	0	0.0
New South Wales*	156	2.5	280	4.4	195	3.0

* The total for New South Wales includes 3 recorded incidents in 1997 and 6 recorded incidents in 1998 where the offence occurred in a custodial institution.

TABLE 3.19 RECORDED CRIMINAL INCIDENTS, 1997 TO 1999: STATISTICAL DIVISION**POSSESSION AND/OR USE OF NARCOTICS**

<i>Statistical Division where offence occurred</i>	<i>Recorded criminal incidents</i>					
	<i>1997</i>		<i>1998</i>		<i>1999</i>	
	<i>Number</i>	<i>Rate per 100,000 population</i>	<i>Number</i>	<i>Rate per 100,000 population</i>	<i>Number</i>	<i>Rate per 100,000 population</i>
Sydney	1,519	38.6	2,415	60.7	2,394	59.2
Inner Sydney	220	79.8	484	172.0	569	198.5
Eastern Suburbs	20	8.2	30	12.3	24	9.7
St George – Sutherland	34	8.2	61	14.5	72	16.9
Canterbury – Bankstown	63	20.6	105	34.1	135	43.8
Fairfield – Liverpool	927	289.2	1,319	402.7	1,124	336.5
Outer South Western Sydney	50	22.8	51	22.9	41	18.1
Inner Western Sydney	27	17.2	35	22.1	57	35.5
Central Western Sydney	49	17.3	124	43.1	130	44.7
Outer Western Sydney	21	6.9	34	11.0	47	15.1
Blacktown – Baulkham Hills	34	9.2	56	14.8	52	13.4
Lower Northern Sydney	13	4.6	24	8.4	26	9.0
Hornsby – Ku-ring-gai	19	7.5	25	9.8	27	10.5
Northern Beaches	11	4.9	26	11.5	33	14.5
Gosford – Wyong	31	11.2	41	14.6	57	19.8
Hunter	89	15.8	117	20.7	115	20.1
Illawarra	66	17.5	105	27.6	72	18.7
Richmond – Tweed	76	37.3	119	57.6	107	51.1
Mid-North Coast	41	15.5	58	21.6	78	28.7
Northern	15	8.5	28	15.9	48	27.4
North Western	8	6.8	21	17.9	23	19.6
Central West	16	9.3	39	22.6	37	21.3
South Eastern	9	5.0	32	17.7	22	12.1
Murrumbidgee	4	2.7	8	5.4	10	6.7
Murray	2	1.8	5	4.5	6	5.4
Far West	0	0.0	1	4.1	3	12.4
New South Wales*	1,895	30.2	3,020	47.7	2,989	46.6

* The total for New South Wales includes 50 recorded incidents in 1997, 72 recorded incidents in 1998 and 74 recorded incidents in 1999 where the offence occurred in a custodial institution.

TABLE 3.20 RECORDED CRIMINAL INCIDENTS, 1997 TO 1999: STATISTICAL DIVISION**POSSESSION AND/OR USE OF CANNABIS**

<i>Statistical Division where offence occurred</i>	<i>Recorded criminal incidents</i>					
	<i>1997</i>		<i>1998</i>		<i>1999</i>	
	<i>Number</i>	<i>Rate per 100,000 population</i>	<i>Number</i>	<i>Rate per 100,000 population</i>	<i>Number</i>	<i>Rate per 100,000 population</i>
Sydney	4,267	108.5	4,888	122.8	4,911	121.5
Inner Sydney	607	220.3	780	277.2	881	307.4
Eastern Suburbs	230	94.4	221	90.8	157	63.8
St George – Sutherland	296	71.0	386	91.8	388	91.2
Canterbury – Bankstown	178	58.2	203	65.9	256	83.0
Fairfield – Liverpool	375	117.0	479	146.2	486	145.5
Outer South Western Sydney	240	109.6	273	122.7	263	116.2
Inner Western Sydney	105	67.1	98	62.0	120	74.7
Central Western Sydney	256	90.5	369	128.4	429	147.6
Outer Western Sydney	473	155.0	583	189.4	519	166.5
Blacktown – Baulkham Hills	476	128.2	527	139.3	566	145.7
Lower Northern Sydney	249	88.0	237	83.0	232	79.9
Hornsby – Ku-ring-gai	230	91.2	226	89.0	165	64.2
Northern Beaches	150	66.6	150	66.3	119	52.1
Gosford – Wyong	402	145.6	356	126.7	330	114.8
Hunter	894	159.2	860	151.8	952	166.2
Illawarra	494	131.0	529	139.1	540	140.1
Richmond – Tweed	805	395.3	843	408.3	885	422.9
Mid-North Coast	927	349.6	922	343.6	991	365.2
Northern	436	246.1	448	255.0	511	292.1
North Western	398	339.1	343	293.2	406	345.3
Central West	384	222.6	585	339.0	489	282.2
South Eastern	695	386.5	776	430.2	631	347.5
Murrumbidgee	364	244.2	400	268.7	367	246.4
Murray	324	292.5	292	262.4	230	207.7
Far West	71	285.3	76	309.3	77	317.6
New South Wales*	10,459	166.7	11,278	178.1	11,379	177.5

* The total for New South Wales includes 400 recorded incidents in 1997, 316 recorded incidents in 1998 and 389 recorded incidents in 1999 where the offence occurred in a custodial institution.

TABLE 3.21 RECORDED CRIMINAL INCIDENTS, 1997 TO 1999: STATISTICAL DIVISION**DEALING, TRAFFICKING IN COCAINE**

<i>Statistical Division where offence occurred</i>	<i>Recorded criminal incidents</i>					
	<i>1997</i>		<i>1998</i>		<i>1999</i>	
	<i>Number</i>	<i>Rate per 100,000 population</i>	<i>Number</i>	<i>Rate per 100,000 population</i>	<i>Number</i>	<i>Rate per 100,000 population</i>
Sydney	91	2.3	115	2.9	190	4.7
Inner Sydney	67	24.3	90	32.0	150	52.3
Eastern Suburbs	10	4.1	6	2.5	16	6.5
St George – Sutherland	9	2.2	5	1.2	11	2.6
Canterbury – Bankstown	2	0.7	3	1.0	2	0.6
Fairfield – Liverpool	0	0.0	4	1.2	6	1.8
Outer South Western Sydney	0	0.0	0	0.0	0	0.0
Inner Western Sydney	1	0.6	0	0.0	1	0.6
Central Western Sydney	0	0.0	1	0.3	2	0.7
Outer Western Sydney	1	0.3	0	0.0	0	0.0
Blacktown – Baulkham Hills	0	0.0	0	0.0	0	0.0
Lower Northern Sydney	1	0.4	4	1.4	1	0.3
Hornsby – Ku-ring-gai	0	0.0	1	0.4	0	0.0
Northern Beaches	0	0.0	1	0.4	0	0.0
Gosford – Wyong	0	0.0	0	0.0	1	0.3
Hunter	0	0.0	0	0.0	1	0.2
Illawarra	2	0.5	0	0.0	0	0.0
Richmond – Tweed	13	6.4	7	3.4	0	0.0
Mid-North Coast	0	0.0	1	0.4	0	0.0
Northern	1	0.6	0	0.0	0	0.0
North Western	0	0.0	0	0.0	0	0.0
Central West	0	0.0	0	0.0	0	0.0
South Eastern	1	0.6	0	0.0	0	0.0
Murrumbidgee	0	0.0	1	0.7	1	0.7
Murray	0	0.0	0	0.0	0	0.0
Far West	0	0.0	0	0.0	0	0.0
New South Wales	108	1.7	124	2.0	192	3.0

TABLE 3.22 RECORDED CRIMINAL INCIDENTS, 1997 TO 1999: STATISTICAL DIVISION**DEALING, TRAFFICKING IN NARCOTICS**

<i>Statistical Division where offence occurred</i>	<i>Recorded criminal incidents</i>					
	<i>1997</i>		<i>1998</i>		<i>1999</i>	
	<i>Number</i>	<i>Rate per 100,000 population</i>	<i>Number</i>	<i>Rate per 100,000 population</i>	<i>Number</i>	<i>Rate per 100,000 population</i>
Sydney	570	14.5	520	13.1	578	14.3
Inner Sydney	51	18.5	95	33.8	204	71.2
Eastern Suburbs	5	2.1	9	3.7	8	3.2
St George – Sutherland	2	0.5	13	3.1	14	3.3
Canterbury – Bankstown	18	5.9	16	5.2	28	9.1
Fairfield – Liverpool	403	125.7	283	86.4	244	73.1
Outer South Western Sydney	44	20.1	19	8.5	11	4.9
Inner Western Sydney	10	6.4	10	6.3	14	8.7
Central Western Sydney	4	1.4	13	4.5	13	4.5
Outer Western Sydney	5	1.6	8	2.6	5	1.6
Blacktown – Baulkham Hills	4	1.1	1	0.3	7	1.8
Lower Northern Sydney	2	0.7	43	15.1	8	2.8
Hornsby – Ku-ring-gai	8	3.2	1	0.4	1	0.4
Northern Beaches	3	1.3	3	1.3	14	6.1
Gosford – Wyong	11	4.0	6	2.1	7	2.4
Hunter	21	3.7	44	7.8	31	5.4
Illawarra	33	8.8	50	13.2	39	10.1
Richmond – Tweed	36	17.7	72	34.9	80	38.2
Mid-North Coast	14	5.3	16	6.0	40	14.7
Northern	5	2.8	5	2.8	38	21.7
North Western	2	1.7	4	3.4	6	5.1
Central West	4	2.3	26	15.1	25	14.4
South Eastern	9	5.0	15	8.3	7	3.9
Murrumbidgee	5	3.4	3	2.0	4	2.7
Murray	3	2.7	1	0.9	2	1.8
Far West	0	0.0	0	0.0	0	0.0
New South Wales*	706	11.3	761	12.0	853	13.3

* The total for New South Wales includes 4 recorded incidents in 1997, 5 recorded incidents in 1998 and 3 recorded incidents in 1999 where the offence occurred in a custodial institution.

TABLE 3.23 RECORDED CRIMINAL INCIDENTS, 1997 TO 1999: STATISTICAL DIVISION**DEALING, TRAFFICKING IN CANNABIS**

<i>Statistical Division where offence occurred</i>	<i>Recorded criminal incidents</i>					
	<i>1997</i>		<i>1998</i>		<i>1999</i>	
	<i>Number</i>	<i>Rate per 100,000 population</i>	<i>Number</i>	<i>Rate per 100,000 population</i>	<i>Number</i>	<i>Rate per 100,000 population</i>
Sydney	417	10.6	412	10.3	383	9.5
Inner Sydney	68	24.7	104	37.0	128	44.7
Eastern Suburbs	32	13.1	24	9.9	12	4.9
St George – Sutherland	24	5.8	25	5.9	23	5.4
Canterbury – Bankstown	11	3.6	18	5.8	22	7.1
Fairfield – Liverpool	28	8.7	38	11.6	32	9.6
Outer South Western Sydney	47	21.5	24	10.8	20	8.8
Inner Western Sydney	6	3.8	7	4.4	9	5.6
Central Western Sydney	15	5.3	16	5.6	26	8.9
Outer Western Sydney	68	22.3	41	13.3	27	8.7
Blacktown – Baulkham Hills	32	8.6	41	10.8	43	11.1
Lower Northern Sydney	12	4.2	11	3.9	11	3.8
Hornsby – Ku-ring-gai	24	9.5	12	4.7	9	3.5
Northern Beaches	16	7.1	18	8.0	4	1.8
Gosford – Wyong	34	12.3	33	11.7	17	5.9
Hunter	83	14.8	37	6.5	72	12.6
Illawarra	83	22.0	86	22.6	56	14.5
Richmond – Tweed	63	30.9	84	40.7	84	40.1
Mid-North Coast	85	32.1	68	25.3	89	32.8
Northern	56	31.6	47	26.8	39	22.3
North Western	24	20.4	45	38.5	36	30.6
Central West	20	11.6	48	27.8	34	19.6
South Eastern	83	46.2	88	48.8	68	37.4
Murrumbidgee	50	33.5	81	54.4	36	24.2
Murray	45	40.6	73	65.6	37	33.4
Far West	7	28.1	10	40.7	13	53.6
New South Wales*	1,029	16.4	1,094	17.3	964	15.0

* The total for New South Wales includes 13 recorded incidents in 1997, 15 recorded incidents in 1998 and 17 recorded incidents in 1999 where the offence occurred in a custodial institution.

TABLE 3.24 RECORDED CRIMINAL INCIDENTS, 1997 TO 1999: STATISTICAL DIVISION**CULTIVATING CANNABIS**

<i>Statistical Division where offence occurred</i>	<i>Recorded criminal incidents</i>					
	<i>1997</i>		<i>1998</i>		<i>1999</i>	
	<i>Number</i>	<i>Rate per 100,000 population</i>	<i>Number</i>	<i>Rate per 100,000 population</i>	<i>Number</i>	<i>Rate per 100,000 population</i>
Sydney	814	20.7	646	16.2	484	12.0
Inner Sydney	51	18.5	45	16.0	27	9.4
Eastern Suburbs	16	6.6	15	6.2	14	5.7
St George – Sutherland	56	13.4	48	11.4	38	8.9
Canterbury – Bankstown	37	12.1	33	10.7	32	10.4
Fairfield – Liverpool	47	14.7	55	16.8	28	8.4
Outer South Western Sydney	80	36.5	58	26.1	35	15.5
Inner Western Sydney	12	7.7	12	7.6	10	6.2
Central Western Sydney	41	14.5	43	15.0	29	10.0
Outer Western Sydney	131	42.9	105	34.1	85	27.3
Blacktown – Baulkham Hills	103	27.7	84	22.2	62	16.0
Lower Northern Sydney	39	13.8	14	4.9	16	5.5
Hornsby – Ku-ring-gai	33	13.1	18	7.1	16	6.2
Northern Beaches	31	13.8	20	8.8	13	5.7
Gosford – Wyong	137	49.6	96	34.2	79	27.5
Hunter	295	52.5	243	42.9	187	32.6
Illawarra	167	44.3	121	31.8	101	26.2
Richmond – Tweed	292	143.4	289	140.0	274	130.9
Mid-North Coast	368	138.8	330	123.0	304	112.0
Northern	135	76.2	124	70.6	130	74.3
North Western	86	73.3	78	66.7	68	57.8
Central West	81	47.0	110	63.7	74	42.7
South Eastern	223	124.0	168	93.1	182	100.2
Murrumbidgee	106	71.1	90	60.5	64	43.0
Murray	77	69.5	78	70.1	42	37.9
Far West	21	84.4	12	48.8	6	24.7
New South Wales*	2,666	42.5	2,291	36.2	1,916	29.9

* The total for New South Wales includes 1 recorded incident in 1997 and 2 recorded incidents in 1998 where the offence occurred in a custodial institution.

TABLE 3.25 RECORDED CRIMINAL INCIDENTS, 1997 TO 1999: STATISTICAL DIVISION**OFFENSIVE CONDUCT**

<i>Statistical Division where offence occurred</i>	<i>Recorded criminal incidents</i>					
	<i>1997</i>		<i>1998</i>		<i>1999</i>	
	<i>Number</i>	<i>Rate per 100,000 population</i>	<i>Number</i>	<i>Rate per 100,000 population</i>	<i>Number</i>	<i>Rate per 100,000 population</i>
Sydney	1,036	26.3	1,138	28.6	1,188	29.4
Inner Sydney	219	79.5	231	82.1	268	93.5
Eastern Suburbs	46	18.9	55	22.6	46	18.7
St George – Sutherland	95	22.8	100	23.8	109	25.6
Canterbury – Bankstown	38	12.4	28	9.1	33	10.7
Fairfield – Liverpool	71	22.1	58	17.7	81	24.3
Outer South Western Sydney	61	27.9	89	40.0	72	31.8
Inner Western Sydney	33	21.1	21	13.3	39	24.3
Central Western Sydney	49	17.3	64	22.3	71	24.4
Outer Western Sydney	74	24.3	141	45.8	98	31.4
Blacktown – Baulkham Hills	66	17.8	111	29.3	104	26.8
Lower Northern Sydney	62	21.9	50	17.5	79	27.2
Hornsby – Ku-ring-gai	31	12.3	41	16.1	36	14.0
Northern Beaches	76	33.8	53	23.4	57	25.0
Gosford – Wyong	115	41.6	96	34.2	95	33.0
Hunter	202	36.0	227	40.1	280	48.9
Illawarra	140	37.1	145	38.1	182	47.2
Richmond – Tweed	188	92.3	266	128.8	318	151.9
Mid-North Coast	202	76.2	252	93.9	315	116.1
Northern	228	128.7	259	147.4	290	165.8
North Western	250	213.0	274	234.2	313	266.2
Central West	147	85.2	205	118.8	228	131.6
South Eastern	211	117.4	221	122.5	268	147.6
Murrumbidgee	135	90.6	174	116.9	204	136.9
Murray	147	132.7	132	118.6	123	111.1
Far West	65	261.2	104	423.2	123	507.3
New South Wales	2,951	47.0	3,397	53.6	3,832	59.8

TABLE 3.26 RECORDED CRIMINAL INCIDENTS, 1997 TO 1999: STATISTICAL DIVISION**OFFENSIVE LANGUAGE**

<i>Statistical Division where offence occurred</i>	<i>Recorded criminal incidents</i>					
	<i>1997</i>		<i>1998</i>		<i>1999</i>	
	<i>Number</i>	<i>Rate per 100,000 population</i>	<i>Number</i>	<i>Rate per 100,000 population</i>	<i>Number</i>	<i>Rate per 100,000 population</i>
Sydney	1,768	44.9	2,303	57.8	2,464	61.0
Inner Sydney	287	104.2	315	111.9	379	132.2
Eastern Suburbs	51	20.9	72	29.6	87	35.3
St George – Sutherland	147	35.3	182	43.3	166	39.0
Canterbury – Bankstown	90	29.4	156	50.7	119	38.6
Fairfield – Liverpool	171	53.3	219	66.9	263	78.7
Outer South Western Sydney	158	72.2	229	102.9	215	95.0
Inner Western Sydney	26	16.6	33	20.9	37	23.0
Central Western Sydney	134	47.4	147	51.1	195	67.1
Outer Western Sydney	127	41.6	275	89.4	292	93.7
Blacktown – Baulkham Hills	137	36.9	262	69.2	339	87.3
Lower Northern Sydney	60	21.2	65	22.8	58	20.0
Hornsby – Ku-ring-gai	62	24.6	86	33.9	70	27.3
Northern Beaches	63	28.0	67	29.6	64	28.0
Gosford – Wyong	255	92.3	195	69.4	180	62.6
Hunter	386	68.7	382	67.4	409	71.4
Illawarra	201	53.3	302	79.4	321	83.3
Richmond – Tweed	275	135.0	353	171.0	443	211.7
Mid-North Coast	383	144.4	552	205.7	489	180.2
Northern	348	196.4	437	248.8	552	315.5
North Western	494	420.9	470	401.7	527	448.2
Central West	245	142.0	387	224.3	502	289.7
South Eastern	320	178.0	379	210.1	444	244.5
Murrumbidgee	222	148.9	309	207.6	302	202.7
Murray	206	185.9	214	192.3	207	186.9
Far West	92	369.7	100	407.0	171	705.3
New South Wales	4,940	78.8	6,188	97.7	6,831	106.5

TABLE 3.27 RECORDED CRIMINAL INCIDENTS, 1997 TO 1999: STATISTICAL DIVISION**BREACH APPREHENDED VIOLENCE ORDER**

<i>Statistical Division where offence occurred</i>	<i>Recorded criminal incidents</i>					
	<i>1997</i>		<i>1998</i>		<i>1999</i>	
	<i>Number</i>	<i>Rate per 100,000 population</i>	<i>Number</i>	<i>Rate per 100,000 population</i>	<i>Number</i>	<i>Rate per 100,000 population</i>
Sydney	4,324	109.9	5,118	128.5	4,733	117.1
Inner Sydney	480	174.2	493	175.2	469	163.6
Eastern Suburbs	218	89.5	306	125.7	257	104.4
St George – Sutherland	458	109.9	476	113.2	378	88.8
Canterbury – Bankstown	249	81.4	336	109.1	195	63.2
Fairfield – Liverpool	379	118.2	508	155.1	411	123.1
Outer South Western Sydney	399	182.2	527	236.9	483	213.4
Inner Western Sydney	108	69.0	99	62.6	109	67.8
Central Western Sydney	306	108.1	396	137.7	352	121.1
Outer Western Sydney	409	134.1	498	161.8	587	188.3
Blacktown – Baulkham Hills	557	150.0	597	157.8	604	155.5
Lower Northern Sydney	129	45.6	181	63.4	154	53.1
Hornsby – Ku-ring-gai	82	32.5	75	29.5	106	41.3
Northern Beaches	88	39.1	157	69.4	154	67.5
Gosford – Wyong	462	167.3	469	167.0	474	164.9
Hunter	827	147.2	1,020	180.0	946	165.2
Illawarra	656	174.0	783	206.0	797	206.8
Richmond – Tweed	290	142.4	409	198.1	375	179.2
Mid-North Coast	500	188.6	650	242.2	647	238.5
Northern	218	123.1	318	181.0	307	175.5
North Western	314	267.5	392	335.1	359	305.3
Central West	251	145.5	257	148.9	331	191.0
South Eastern	191	106.2	316	175.2	291	160.2
Murrumbidgee	268	179.8	319	214.3	324	217.5
Murray	133	120.1	179	160.9	188	169.8
Far West	129	518.3	110	447.7	113	466.1
New South Wales*	8,105	129.2	9,897	156.3	9,413	146.8

* The total for New South Wales includes 4 recorded incidents in 1997, 26 recorded incidents in 1998 and 2 recorded incidents in 1999 where the offence occurred in a custodial institution.

TABLE 3.28 RECORDED CRIMINAL INCIDENTS, 1997 TO 1999: STATISTICAL DIVISION**PCA DRIVING OFFENCES**

<i>Statistical Division where offence occurred</i>	<i>Recorded criminal incidents</i>					
	<i>1997</i>		<i>1998</i>		<i>1999</i>	
	<i>Number</i>	<i>Rate per 100,000 population</i>	<i>Number</i>	<i>Rate per 100,000 population</i>	<i>Number</i>	<i>Rate per 100,000 population</i>
Sydney	7,559	192.2	9,279	233.0	11,945	295.6
Inner Sydney	805	292.2	961	341.5	1,190	415.2
Eastern Suburbs	391	160.5	426	175.1	491	199.4
St George – Sutherland	682	163.6	763	181.5	904	212.5
Canterbury – Bankstown	315	103.0	340	110.4	492	159.6
Fairfield – Liverpool	492	153.5	666	203.3	1,051	314.7
Outer South Western Sydney	515	235.2	891	400.5	967	427.2
Inner Western Sydney	164	104.8	171	108.1	288	179.2
Central Western Sydney	412	145.6	458	159.3	569	195.8
Outer Western Sydney	746	244.5	999	324.6	1,194	383.0
Blacktown – Baulkham Hills	562	151.3	891	235.5	1,271	327.2
Lower Northern Sydney	680	240.2	797	279.0	1,330	458.2
Hornsby – Ku-ring-gai	273	108.3	296	116.5	364	141.7
Northern Beaches	745	331.0	846	373.9	971	425.4
Gosford – Wyong	777	281.4	774	275.6	863	300.2
Hunter	1,797	319.9	1,674	295.5	1,874	327.2
Illawarra	891	236.3	1,043	274.3	1,130	293.1
Richmond – Tweed	967	474.8	1,024	495.9	1,138	543.8
Mid-North Coast	1,078	406.6	1,171	436.4	1,276	470.3
Northern	794	448.2	835	475.4	872	498.4
North Western	596	507.8	576	492.3	721	613.2
Central West	657	380.9	728	421.9	891	514.1
South Eastern	875	486.6	957	530.6	1,186	653.1
Murrumbidgee	640	429.4	713	479.0	772	518.2
Murray	563	508.2	522	469.2	659	595.2
Far West	90	361.6	111	451.7	229	944.5
New South Wales	16,507	263.2	18,633	294.2	22,693	353.9

TABLE 3.29 RECORDED CRIMINAL INCIDENTS, 1997 TO 1999: STATISTICAL DIVISION**DRIVE WHILE DISQUALIFIED**

<i>Statistical Division where offence occurred</i>	<i>Recorded criminal incidents</i>					
	<i>1997</i>		<i>1998</i>		<i>1999</i>	
	<i>Number</i>	<i>Rate per 100,000 population</i>	<i>Number</i>	<i>Rate per 100,000 population</i>	<i>Number</i>	<i>Rate per 100,000 population</i>
Sydney	4,695	119.4	6,727	169.0	9,678	239.5
Inner Sydney	489	177.5	623	221.4	792	276.4
Eastern Suburbs	162	66.5	255	104.8	274	111.3
St George – Sutherland	378	90.7	433	103.0	565	132.8
Canterbury – Bankstown	299	97.7	478	155.3	707	229.3
Fairfield – Liverpool	560	174.7	1,062	324.2	1,923	575.8
Outer South Western Sydney	345	157.6	582	261.6	920	406.5
Inner Western Sydney	108	69.0	139	87.9	226	140.7
Central Western Sydney	394	139.2	503	175.0	802	276.0
Outer Western Sydney	509	166.8	643	208.9	881	282.6
Blacktown – Baulkham Hills	569	153.2	911	240.8	1,234	317.6
Lower Northern Sydney	211	74.5	263	92.1	354	122.0
Hornsby – Ku-ring-gai	110	43.6	116	45.7	161	62.7
Northern Beaches	150	66.6	189	83.5	257	112.6
Gosford – Wyong	411	148.8	530	188.7	582	202.4
Hunter	672	119.6	969	171.0	1,192	208.1
Illawarra	470	124.7	708	186.2	1,044	270.8
Richmond – Tweed	231	113.4	401	194.2	597	285.3
Mid-North Coast	396	149.4	550	205.0	700	258.0
Northern	230	129.8	346	197.0	490	280.1
North Western	300	255.6	373	318.8	497	422.7
Central West	286	165.8	425	246.3	563	324.9
South Eastern	267	148.5	427	236.7	530	291.8
Murrumbidgee	259	173.8	295	198.2	347	232.9
Murray	122	110.1	127	114.1	168	151.7
Far West	41	164.7	75	305.2	122	503.2
New South Wales*	7,970	127.1	11,424	180.4	15,929	248.4

* The total for New South Wales includes 1 recorded incident in 1997, 1 recorded incident in 1998 and 1 recorded incident in 1999 where the offence occurred in a custodial institution.

TABLE 3.30 RECORDED CRIMINAL INCIDENTS, 1997 TO 1999: STATISTICAL DIVISION**DRIVE MANNER/SPEED DANGEROUS**

<i>Statistical Division where offence occurred</i>	<i>Recorded criminal incidents</i>					
	<i>1997</i>		<i>1998</i>		<i>1999</i>	
	<i>Number</i>	<i>Rate per 100,000 population</i>	<i>Number</i>	<i>Rate per 100,000 population</i>	<i>Number</i>	<i>Rate per 100,000 population</i>
Sydney	1,060	26.9	1,243	31.2	1,298	32.1
Inner Sydney	105	38.1	112	39.8	116	40.5
Eastern Suburbs	39	16.0	44	18.1	44	17.9
St George – Sutherland	73	17.5	83	19.7	112	26.3
Canterbury – Bankstown	89	29.1	83	27.0	101	32.8
Fairfield – Liverpool	122	38.1	162	49.5	154	46.1
Outer South Western Sydney	76	34.7	112	50.3	140	61.9
Inner Western Sydney	32	20.4	22	13.9	31	19.3
Central Western Sydney	75	26.5	86	29.9	79	27.2
Outer Western Sydney	118	38.7	163	53.0	159	51.0
Blacktown – Baulkham Hills	147	39.6	169	44.7	154	39.6
Lower Northern Sydney	40	14.1	41	14.4	44	15.2
Hornsby – Ku-ring-gai	24	9.5	30	11.8	27	10.5
Northern Beaches	31	13.8	29	12.8	27	11.8
Gosford – Wyong	89	32.2	107	38.1	110	38.3
Hunter	165	29.4	230	40.6	255	44.5
Illawarra	137	36.3	164	43.1	196	50.8
Richmond – Tweed	78	38.3	91	44.1	97	46.3
Mid-North Coast	120	45.3	128	47.7	145	53.4
Northern	57	32.2	63	35.9	92	52.6
North Western	73	62.2	95	81.2	115	97.8
Central West	93	53.9	96	55.6	101	58.3
South Eastern	85	47.3	98	54.3	123	67.7
Murrumbidgee	83	55.7	69	46.4	80	53.7
Murray	60	54.2	57	51.2	58	52.4
Far West	24	96.4	17	69.2	26	107.2
New South Wales*	2,035	32.4	2,351	37.1	2,587	40.3

* The total for New South Wales includes 1 recorded incident in 1999 where the offence occurred in a custodial institution.

APPENDICES

APPENDIX 1

OFFENCES INCLUDED IN CLASSIFICATIONS

<i>Classification</i>	<i>Offences included</i>
Homicide:	
Murder	Murder – actual
Attempted murder	Murder – attempted Shoot with intent to murder
Murder accessory, conspiracy	Murder accessory Murder conspiracy
Manslaughter – not driving	Manslaughter
Manslaughter – driving	Culpable driving cause death Culpable navigation cause death
Assault	
	Actual bodily harm Grievous bodily harm (including malicious wounding) Assault officer Common assault Shoot with intent other than to murder
Sexual offences:	
Sexual assault	Sexual assault Aggravated sexual assault Assault with intent to have sexual intercourse
Indecent assault, act of indecency	Indecent assault Aggravated indecent assault Act of indecency Aggravated act of indecency
Other sexual offences	Incest Carnal knowledge Wilful and obscene exposure Bestiality Indecent communication Peep or pry Other sexual offence
Abduction and kidnapping	Abduction and kidnapping
Robbery:	
Robbery without a weapon	Robbery Robbery with striking Robbery with wounding Other robbery
Robbery with a firearm	Armed robbery where weapon is firearm
Robbery with a weapon not a firearm	Armed robbery where weapon is not firearm

APPENDIX 1 continued

<i>Classification</i>	<i>Offences included</i>
Other offences against the person	Intimidation Malicious damage intent injure / endanger Negligent act cause grievous bodily harm Offence against transport service Other offence against the person
Theft:	
Break and enter – dwelling	Property breaking – all living premises (including, for example, nursing home and tent) Property breaking – Balcony Clothes line Cubby house Garage (attached) Garage (detached) Garden Gazebo Greenhouse Outhouse Sauna/spa (external) Shed Swimming pool (residential) Tennis court (residential) Verandah Yard
Break and enter – non-dwelling	All property breakings other than to dwellings as defined above
Possess implements	Possess implements
Receiving	Receiving
Goods in custody	Goods in custody Possess property stolen outside NSW
Motor vehicle theft	Theft of motor cars, motor cycles, and other modes of transport (excluding marine vessels and aircraft)
Steal from motor vehicle	Steal from motor vehicle
Steal from retail store	Steal from retail store
Steal from dwelling	Steal from dwelling
Steal from person	Steal from person
Stock theft	Stock theft
Fraud	Larceny clerk / servant / bailee Make / use false instrument Embezzlement

APPENDIX 1 continued

Classification	Offences included
Fraud <i>continued</i>	Fraudulent appropriation Company / corporate offence Deception offence Possess false misleading statement Other fraud Corrupt commission / practices Counterfeit currency offence under Commonwealth Crimes Ac
Other theft	Other stealing
Demand money with menace	Demand money with menaces
Extortion, blackmail	Extortion, blackmail
Arson	Malicious damage by fire Destroy by fire – financial gain Destroy by fire – intent injure
Malicious damage to property	Malicious damage to property Graffiti Public place – damage fountain / wall Public place – damage shrine / monument
Drug offences:	
Possession and / or use of cocaine	Possess drug unlawfully, where drug type is cocaine Use or administer drug, where drug type is cocaine
Possession and / or use of narcotics	Possess drug unlawfully, where drug type is narcotics Use or administer drug, where drug type is narcotics
Possession and / or use of cannabis	Possess drug unlawfully, where drug type is cannabis Use or administer drug, where drug type is cannabis
Possession and / or use of other drugs	Possess drug unlawfully, where drug type is not cocaine, narcotics or cannabis Use or administer drug, where drug type is not cocaine, narcotics or cannabis
Dealing, trafficking in cocaine	Supply drug where drug type is cocaine
Dealing, trafficking in narcotics	Supply drug where drug type is narcotics
Dealing, trafficking in other drugs	Supply drug where drug type is not cocaine, narcotics or cannabis
Cultivating cannabis	Cultivate cannabis
Importing drugs	Import drugs
Other drug offences	Manufacture drug Forge and / or utter prescription Possess drug utensil Other drug offence

APPENDIX 1 continued

Classification	Offences included
Offensive behaviour:	
Offensive conduct	Offensive conduct
Offensive language	Offensive language
Prostitution offences	Soliciting / prostitution in public Prostitution – premises Prostitution – live off earnings Consorting Child prostitution Child pornography Other vice offence
Betting and gaming offences	Conduct / play illegal game Conduct / play illegal betting Own / manage premises – gaming Own / manage premises – betting Other gaming offence
Weapons offences	Possess whilst unlicensed Possess shortened firearm Possess prohibited weapon / article Shorten firearm Dealer offence Unlawfully discharge firearm Trespass with firearm Use firearm under influence Discharge firearm into premises Other firearm offence Other firearm licensing offence Not ensure safekeeping Use prohibited weapon / article Sell prohibited weapon / article Other prohibited weapon / article offence Bomb hoax or threat Possess explosive / dangerous article Carry cutting weapon
Against justice procedures:	
Escapee – Corrective Services custody	Escapee – Corrective Services custody
Escapee – Police custody	Escapee – Police custody
Escapee – juvenile detention	Escapee – juvenile detention
Escapee – other custody	Escapee – other custody
Breach Apprehended Violence Order	Breach Apprehended Violence Order

APPENDIX 1 continued

Classification	Offences included
Against justice procedures: continued	
Breach bail conditions	Breach bail conditions
Breach of recognizance	Breach of recognizance
Fail to appear	Fail to appear
Other offences against justice procedures	Resist / hinder officers Other judicial offence
Driving offences:	
Culpable driving	Culpable driving cause grievous bodily harm Culpable navigation cause grievous bodily harm
PCA	Prescribed concentration alcohol
Drive while disqualified	Drive while disqualified
Drive manner / speed dangerous	Drive manner / speed dangerous
Other driving offences	Negligent driving Drive under influence drug Furious / wanton / menacing driving Registration / insurance offence Breath / drug test offence Other driving offence Other traffic offence Other driving licence offence
Other offences	
	Accessory after the fact Family Law offence Immigration / customs offence Offences under the Telecommunications Act Offences under the Postal Services Act Offences under the Pawnbrokers Act Offences under the Dog Act Offences under the Prevention of Cruelty to Animals Act Offences under the Children (Care and Protection) Act Offences under the Local Government Act Offences under the Bush Fires Act Offences under the Liquor Act Offences under the Registered Clubs Act Offences under the Inclosed Lands Protection Act Offences under the Security (Protection) Industry Act Possess / publish indecent material Public mischief Intention offences (e.g. armed with intent) Street offences Transport offences Trespass Other offences

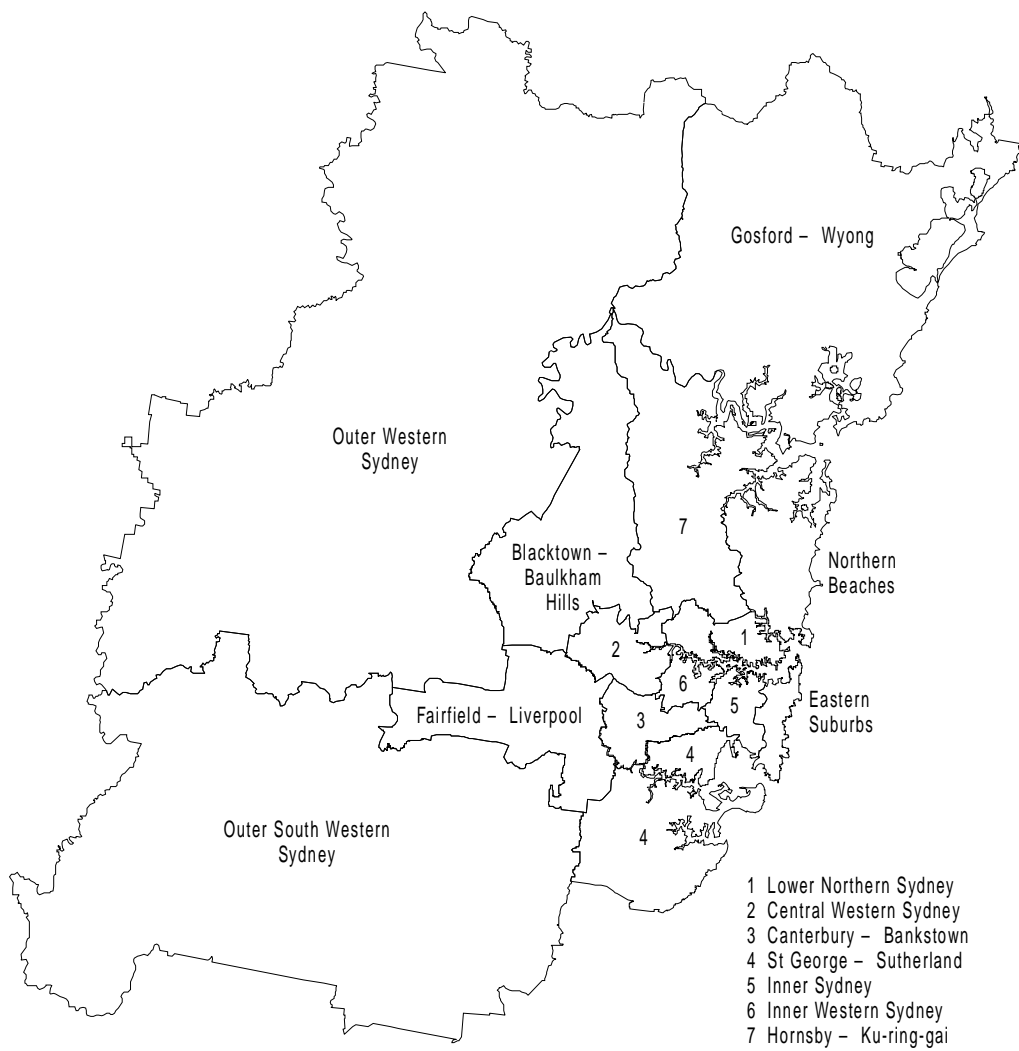
APPENDIX 2

Map 1: New South Wales Statistical Division boundaries



APPENDIX 2 continued

Map 2: Sydney Statistical Subdivision boundaries



APPENDIX 3

LOCAL GOVERNMENT AREAS IN STATISTICAL DIVISIONS

Sydney Statistical Subdivisions

Inner Sydney

Botany Bay
Leichhardt
Marrickville
South Sydney
Sydney

Outer South Western Sydney

Camden
Campbelltown
Wollondilly

Lower Northern Sydney

Hunters Hill
Lane Cove
Mosman
North Sydney
Ryde
Willoughby

Eastern Suburbs

Randwick
Waverley
Woollahra

Inner Western Sydney

Ashfield
Burwood
Concord
Drummoyne
Strathfield

Hornsby – Ku-ring-gai

Hornsby
Ku-ring-gai

St George – Sutherland

Hurstville
Kogarah
Rockdale
Sutherland

Central Western Sydney

Auburn
Holroyd
Parramatta

Northern Beaches

Manly
Pittwater
Warringah

Canterbury – Bankstown

Bankstown
Canterbury

Outer Western Sydney

Blue Mountains
Hawkesbury
Penrith

Gosford – Wyong

Gosford
Wyong

Fairfield – Liverpool

Fairfield
Liverpool

Blacktown – Baulkham Hills

Baulkham Hills
Blacktown

APPENDIX 3 continued

NSW Statistical Divisions

<i>Hunter</i>	<i>Illawarra</i>	<i>Richmond – Tweed</i>	<i>Mid-North Coast</i>
Cessnock	Kiama	Ballina	Bellingen
Dungog	Shellharbour	Byron	Coffs Harbour
Gloucester	Shoalhaven	Casino	Copmanhurst
Great Lakes	Wingecarribee	Kyogle	Grafton
Lake Macquarie	Wollongong	Lismore	Greater Taree
Maitland		Richmond River	Hastings
Merriwa		Tweed	Kempsey
Murrurundi			Lord Howe Island
Muswellbrook			Maclean
Newcastle			Nambucca
Port Stephens			Nymboida
Scone			Ulmarra
Singleton			
<i>Northern</i>	<i>North Western</i>	<i>Central West</i>	<i>South Eastern</i>
Armidale	Bogan	Bathurst	Bega Valley
Barraba	Bourke	Bland	Bombala
Bingara	Brewarrina	Blayney	Boorowa
Dumaresq	Cobar	Cabonne	Cooma-Monaro
Glen Innes	Coolah	Cowra	Crookwell
Gunnedah	Coonabarabran	Evans	Eurobodalla
Guyra	Coonamble	Forbes	Goulburn
Inverell	Dubbo	Greater Lithgow	Gunning
Manilla	Gilgandra	Lachlan	Harden
Moree Plains	Mudgee	Oberon	Mulwaree
Narrabri	Narromine	Orange	Queanbeyan
Nundle	Walgett	Parkes	Snowy River
Parry	Warren	Rylstone	Tallaganda
Quirindi	Wellington	Weddin	Yarrowlumla
Severn			Yass
Tamworth			Young
Tenterfield			
Uralla			
Walcha			
Yallaroi			
<i>Murrumbidgee</i>	<i>Murray</i>	<i>Far West</i>	
Carrathool	Albury	Broken Hill	
Coolamon	Balranald	Central Darling	
Cootamundra	Berrigan	Unincorporated Far West	
Griffith	Conargo		
Gundagai	Corowa		
Hay	Culcairn		
Junee	Deniliquin		
Leeton	Holbrook		
Lockhart	Hume		
Murrumbidgee	Jerilderie		
Narrandera	Murray		
Temora	Tumbarumba		
Tumut	Urana		
Wagga Wagga	Wakool		
	Wentworth		
	Windouran		

