

NSW CUSTODY STATISTICS

September 2020



YOUTH DETENTION POPULATION

235

in September 2019

190

in September 2020



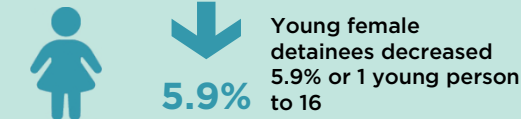
CUSTODY STATUS

Between September 2019 and September 2020



GENDER

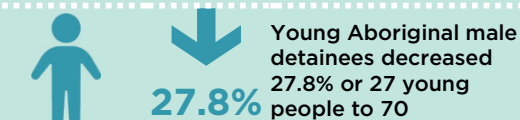
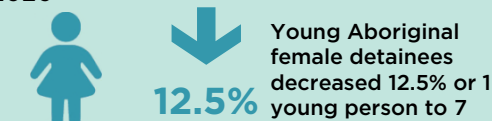
Between September 2019 and September 2020



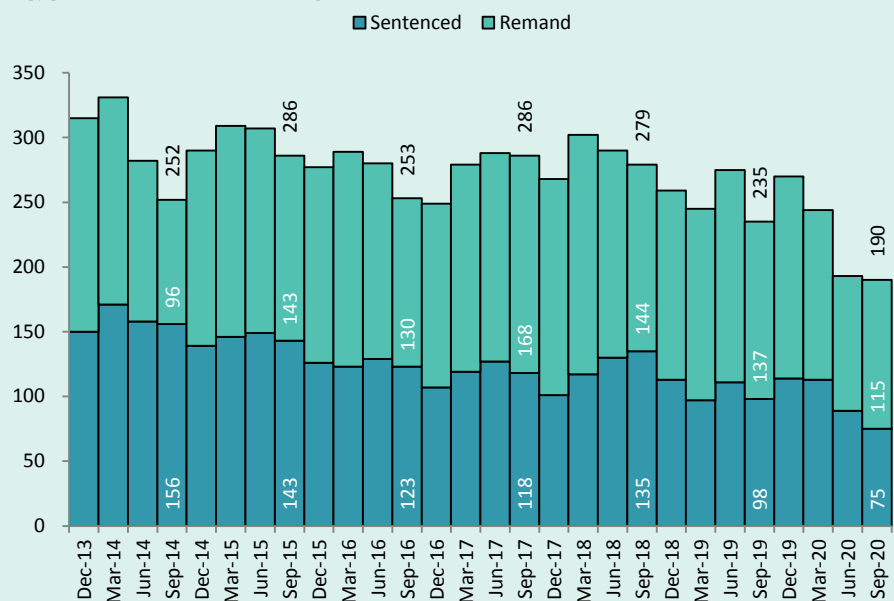
ABORIGINAL OVER-REPRESENTATION



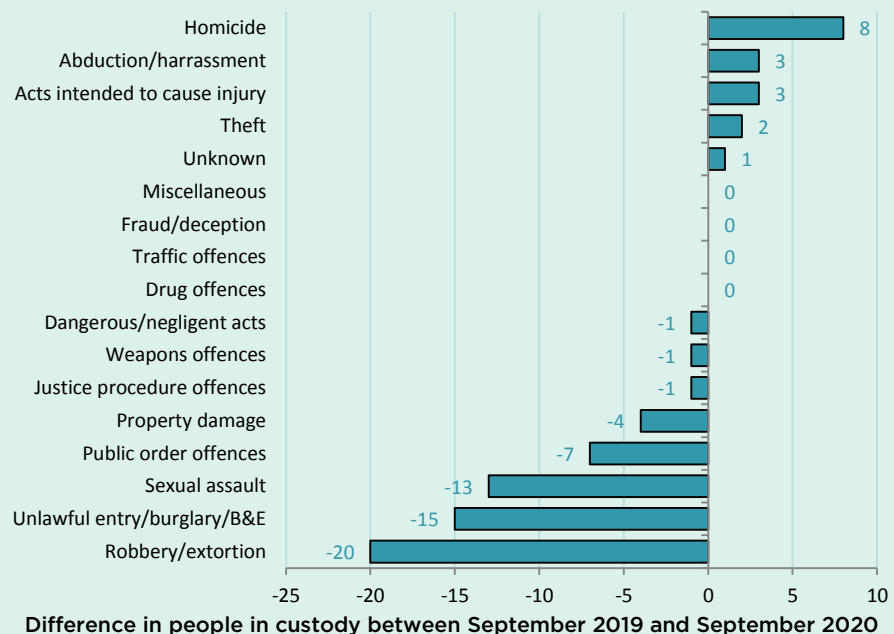
Between September 2019 and September 2020



QUARTERLY TRENDS



CHANGE IN YOUTH CUSTODY BY OFFENCE



NSW CUSTODY STATISTICS

September 2020

PRISON POPULATION

13,522

in September 2019

12,701

in September 2020



LEGAL STATUS

Between September 2019 and September 2020



↓
9.8%

Remand population decreased 9.8% or 448 people to 4,135



↓
4.2%

Sentenced population decreased 4.2% or 373 people to 8,566

GENDER

Between September 2019 and September 2020



↓
13.6%

Female custody population decreased 13.6% or 132 people to 839



↓
5.5%

Male custody population decreased 5.5% or 689 people to 11,862

ABORIGINAL OVER-REPRESENTATION*

In Sep 2019

25.6%

of prisoners were Aboriginal

In Sep 2020

25.2%

of prisoners were Aboriginal

Between September 2019 and September 2020



↓
11.0%

Aboriginal female custody population decreased 11.0% or 34 people to 275

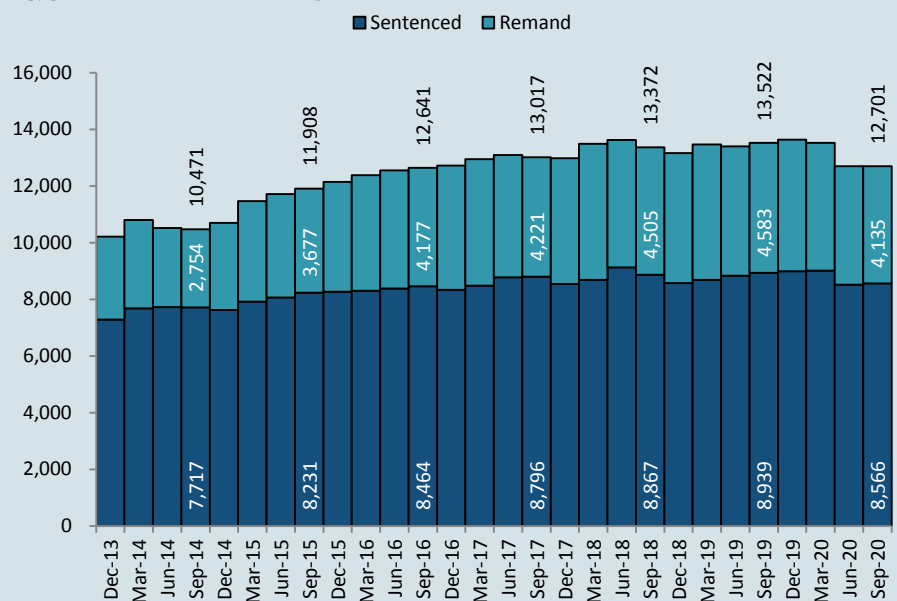


↓
7.4%

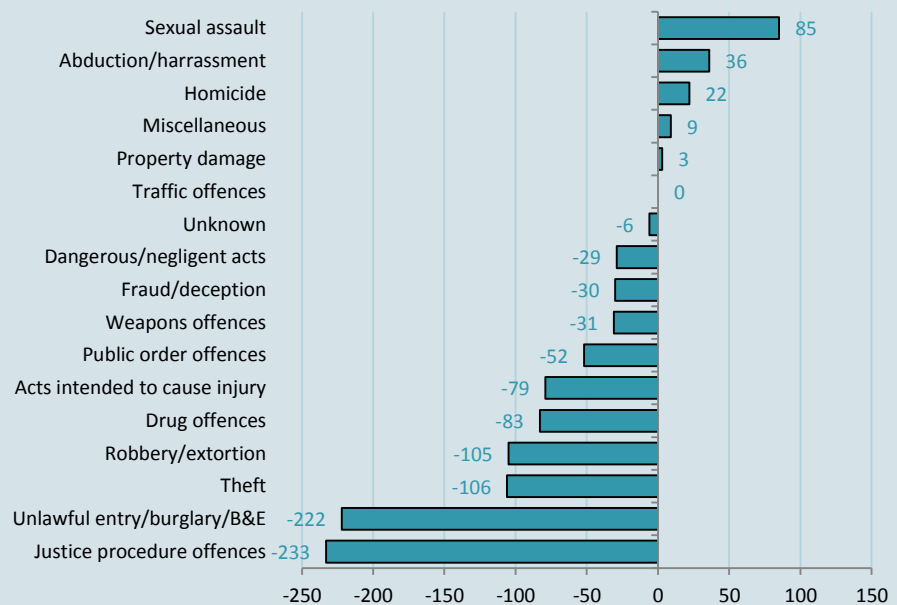
Aboriginal male custody population decreased 7.4% or 234 people to 2,925

*Due to delays in identification of Aboriginal status the number of Aboriginal persons in adult custody is potentially undercounted by up to 2% in more recent months.

QUARTERLY TRENDS



CHANGE IN PRISON NUMBERS BY OFFENCE



Difference in people in custody between September 2019 and September 2020

