

NSW CUSTODY STATISTICS

September 2021



YOUTH DETENTION POPULATION

190

in September 2020

175

in September 2021



CUSTODY STATUS

Between September 2020 and September 2021



GENDER

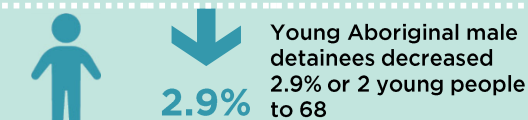
Between September 2020 and September 2021



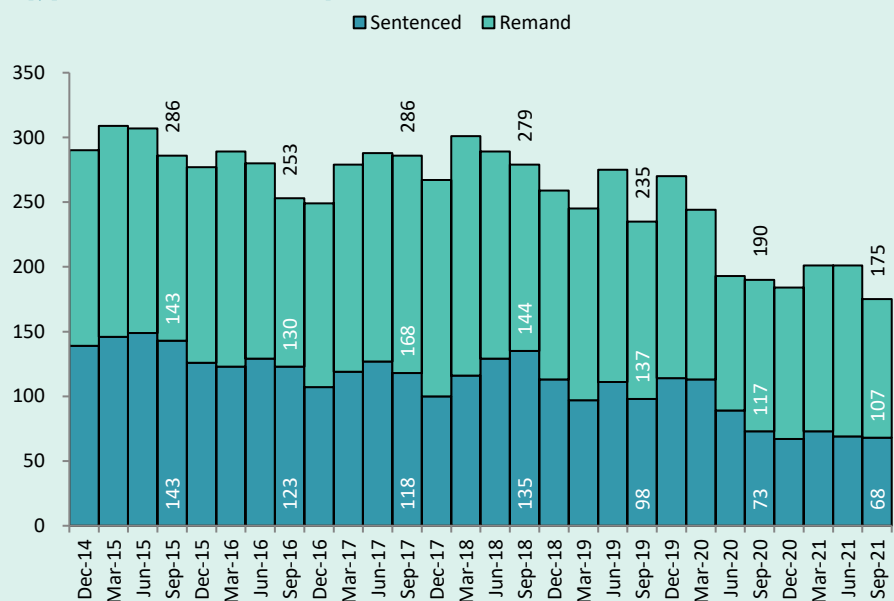
ABORIGINAL OVER-REPRESENTATION



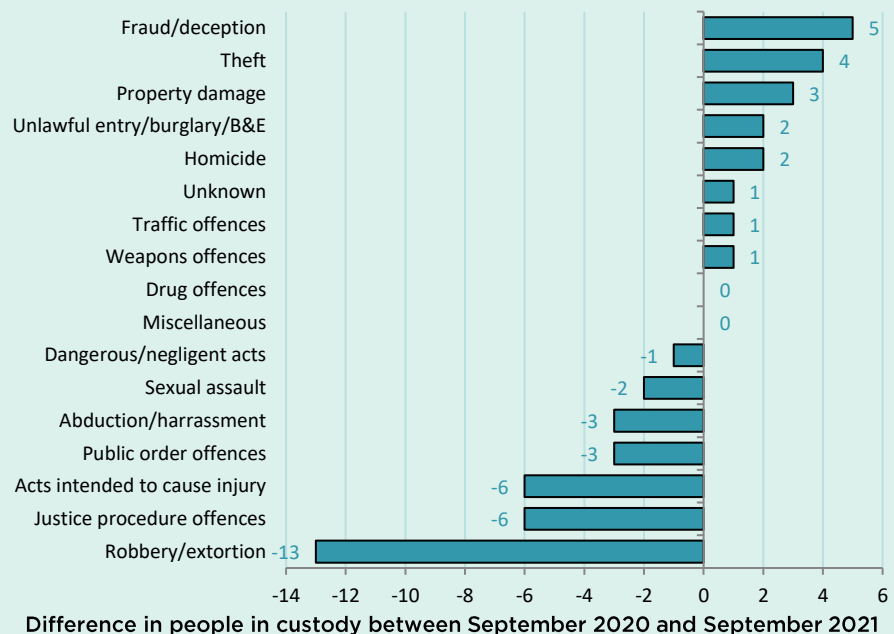
Between September 2020 and September 2021



QUARTERLY TRENDS



CHANGE IN YOUTH CUSTODY BY OFFENCE



NSW CUSTODY STATISTICS

September 2021

PRISON POPULATION

12,701 **12,254**

in September 2020

in September 2021



LEGAL STATUS

Between September 2020 and September 2021



0.9%

Remand population increased 0.9% or 38 people to 4,173



5.7%

Sentenced population decreased 5.7% or 485 people to 8,081

GENDER

Between September 2020 and September 2021



6.7%

Female custody population decreased 6.7% or 56 people to 783



3.3%

Male custody population decreased 3.3% or 391 people to 11,471

ABORIGINAL OVER-REPRESENTATION*

In Sep 2020

26.1%

of prisoners were Aboriginal

In Sep 2021

27.9%

of prisoners were Aboriginal

Between September 2020 and September 2021



0.3%

Aboriginal female custody population decreased 0.3% or 1 person to 285

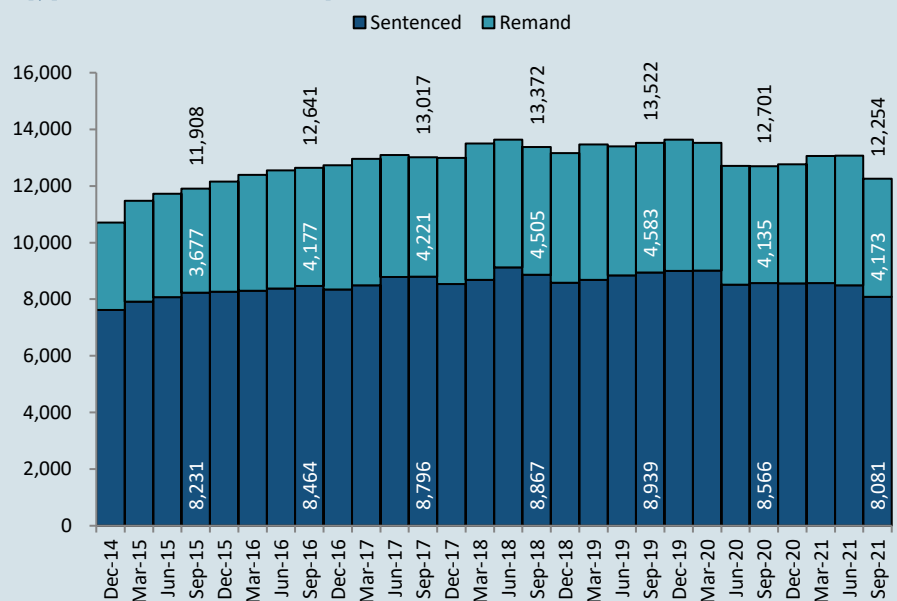


3.4%

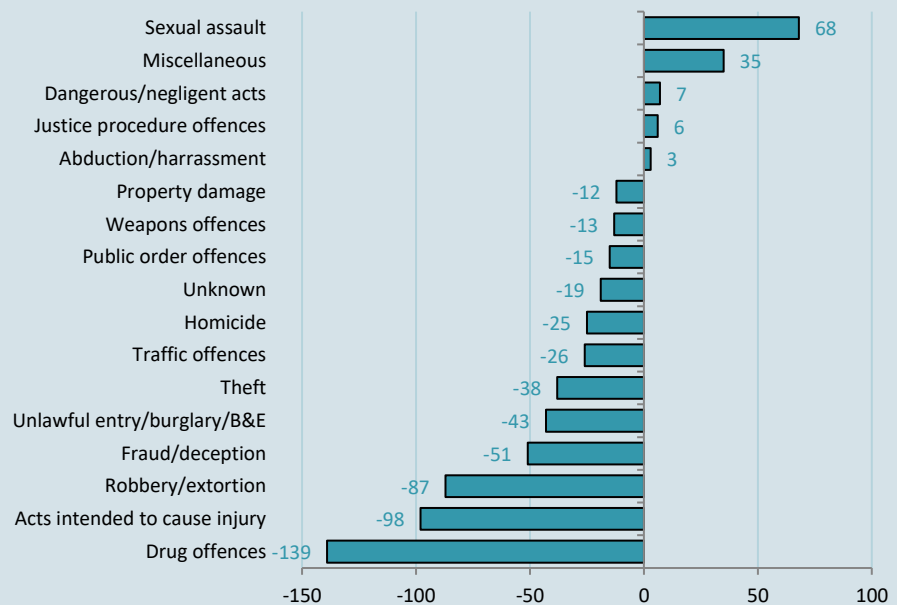
Aboriginal male custody population increased 3.4% or 103 people to 3,133

*Due to delays in identification of Aboriginal status the number of Aboriginal persons in adult custody is potentially undercounted by up to 2% in more recent months.

QUARTERLY TRENDS



CHANGE IN PRISON NUMBERS BY OFFENCE



Difference in people in custody between September 2020 and September 2021