

NSW CUSTODY STATISTICS

September 2023



YOUTH DETENTION POPULATION

208

197

in September 2022

in September 2023



CUSTODY STATUS

Between September 2022 and September 2023



GENDER

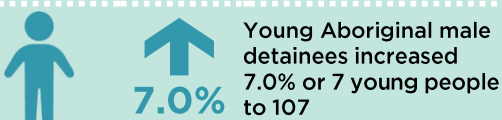
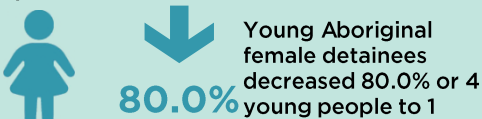
Between September 2022 and September 2023



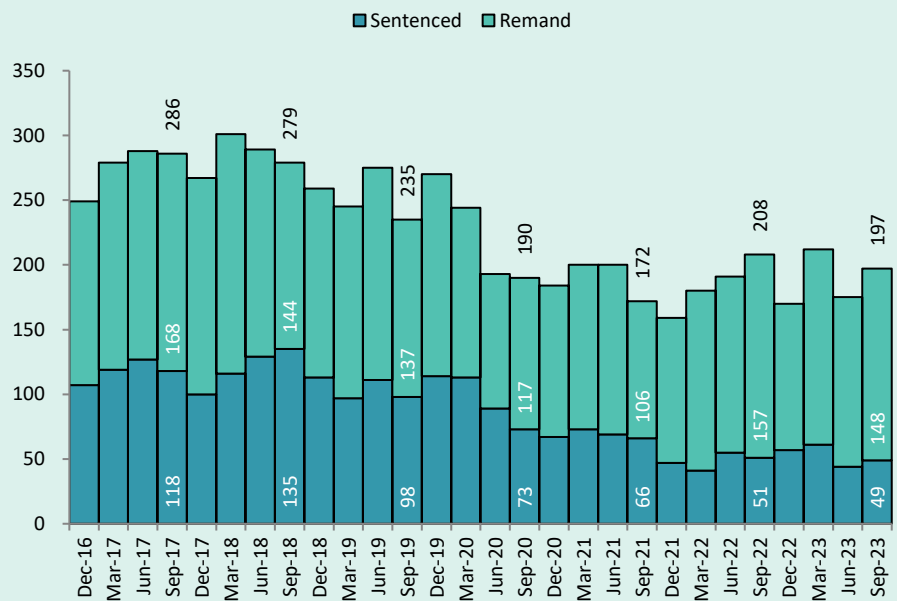
ABORIGINAL OVER-REPRESENTATION



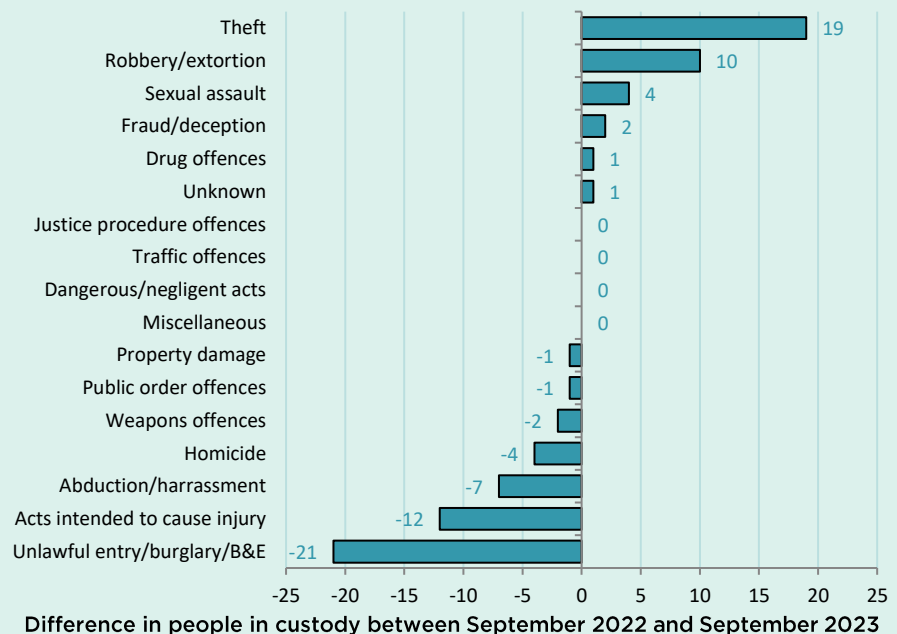
Between September 2022 and September 2023



QUARTERLY TRENDS



CHANGE IN YOUTH CUSTODY BY OFFENCE



NSW CUSTODY STATISTICS

September 2023

PRISON POPULATION

12,452 **12,272**

in September 2022

in September 2023



LEGAL STATUS

Between September 2022 and September 2023



↑
5.3%

Remand population increased 5.3% or 250 people to 4,983



↓
5.6%

Sentenced population decreased 5.6% or 430 people to 7,289

GENDER

Between September 2022 and September 2023



↑
2.8%

Female custody population increased 2.8% or 22 people to 807



↓
1.7%

Male custody population decreased 1.7% or 202 people to 11,465

ABORIGINAL OVER-REPRESENTATION*

In Sep 2022

29.7%

of prisoners were Aboriginal

In Sep 2023

30.4%

of prisoners were Aboriginal

Between September 2022 and September 2023



↓
3.8%

Aboriginal female custody population decreased 3.8% or 12 people to 306

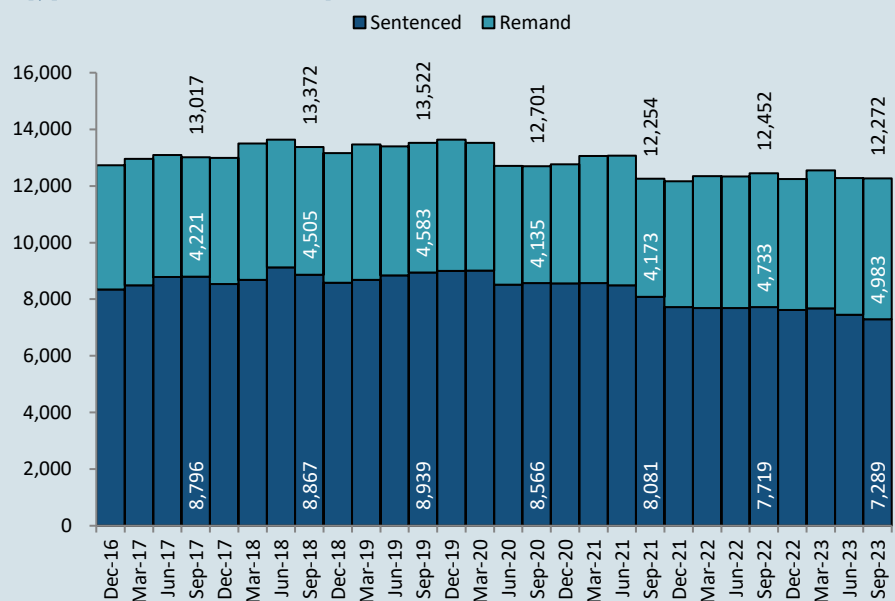


↓
1.1%

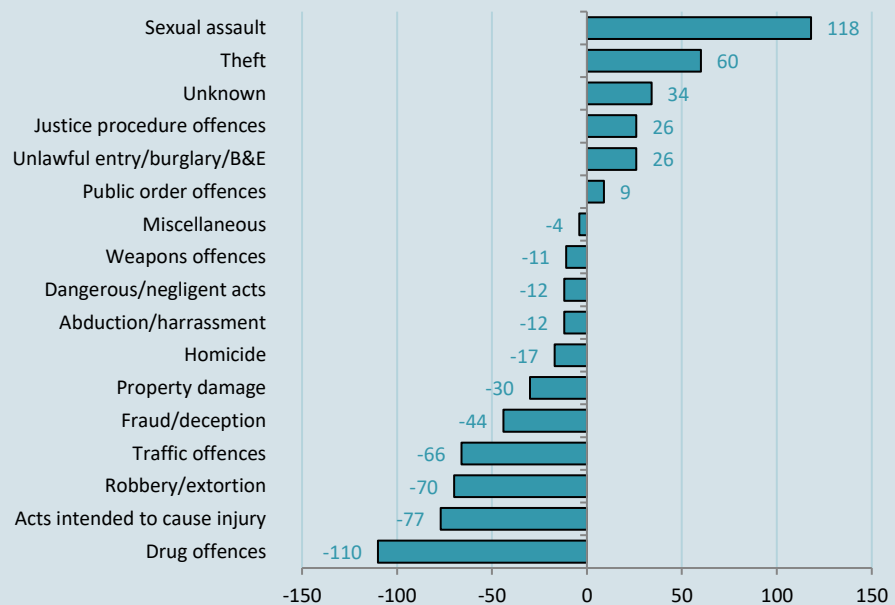
Aboriginal male custody population increased 1.1% or 36 people to 3,419

*Due to delays in identification of Aboriginal status the number of Aboriginal persons in adult custody is potentially undercounted by up to 2% in more recent months.

QUARTERLY TRENDS



CHANGE IN PRISON NUMBERS BY OFFENCE



Difference in people in custody between September 2022 and September 2023