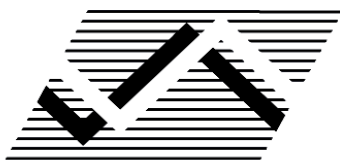

NEW SOUTH WALES RECORDED CRIME STATISTICS 2016

Revised Edition September 2018

Derek Goh and Jessie Holmes

REVISED EDITION

This is a revised edition of the original report. The revision was created in September 2018 to incorporate updates to the historic counts of murder and drug possession offences. The murder revisions have increased the number of murder victims by 4% between 2011 and 2017. The drug possession revisions have resulted in a 25% reduction in the volume of these offences from 2010 due to some incidents previously being double counted.



NSW Bureau of Crime
Statistics and Research

ACKNOWLEDGEMENTS

The production of this report was greatly assisted by officers within the NSW Police Force. Special thanks are due to officers in Business and Technology Services and in Corporate Information, Executive Support Group.

REVISED EDITION

This is a revised edition of the original report. The revision was created in September 2018 to incorporate updates to the historic counts of murder and drug possession offences. The murder revisions have increased the number of murder victims by 4% between 2011 and 2017. The drug possession revisions have resulted in a 25% reduction in the volume of these offences from 2010 due to some incidents previously being double counted.

2018

Published by the NSW Bureau of Crime Statistics and Research
Department of Justice
Level 1
Henry Deane Building
20 Lee St
Sydney NSW 2000
Australia

Phone: + 61 (2) 8346 1100
Fax: + 61 (2) 8364 1298
Email: bcsr@justice.nsw.gov.au
Website: www.bocsar.nsw.gov.au
ISSN: 1035-9044

This report is available in pdf format on our website and may be provided in alternative formats. Please contact the Bureau on 8346 1100 or email us at bcsr@justice.nsw.gov.au.

INTRODUCTION

This report presents data on crime reported to, or detected by, the NSW Police Force from January 1995 to December 2016, with a focus on the statistical trends for the 24 months ending December 2016. The data were extracted from the Computerised Operational Policing System (COPS) of the NSW Police Force in February 2017.

The report includes an overview of trends in the most recent two-year period for major offence categories, firstly for NSW and then across NSW regions broken down to the Local Government Area (LGA) level. At the State level, for the 24-month period to the end of December 2016 one major offence category has been trending upwards: steal from retail store (up 6.1%). Six of the 17 major offence categories were trending downwards: *robbery without a weapon* (down 13.3%), *robbery with a weapon not a firearm* (down 13.9%), *break and enter dwelling* (down 6.2%), *motor vehicle theft* (down 7.3%), *steal from person* (down 13.3%) and *fraud* (down 3.9%).

The NSW graphs for rates of violent and property offences are on page 7 of the report. For violent offences using the 12-month moving average (light grey line) we can see a downward path over the past five years and this can also be seen in the trend tests for most of the NSW Statistical Areas in Table 1.1. The property offences graph using the 6-month moving average (light grey line) indicates a strong downward path since about 2000 to 2010, after which it stabilised before dropping again more recently. Table 1.1 for trend tests on the levels of property offences indicates a significant decrease over the last five years.

Dr Don Weatherburn
Director

April 2017

CONTENTS

SECTION 1: OVERVIEW OF TRENDS IN VIOLENT AND PROPERTY CRIME	. . .	5
Figure 1.1 NSW long-term trend in violent crime	. . .	7
Figure 1.2 NSW long-term trend in property crime	. . .	7
Table 1.1 Trends in violent and property offences, NSW Statistical Areas (SAs) and NSW	. . .	8
Table 1.2 Trends in violent and property offences, Greater Sydney Statistical Areas (SAs)	. . .	9
Table 1.3 Trends in violent and property offences, NSW Local Government Areas (LGAs)	. . .	10
SECTION 2: OVERVIEW OF TRENDS IN RECORDED CRIME, BY OFFENCE TYPE	. . .	13
Table 2.1 Trends in recorded criminal incidents for major offences, NSW, January 2012 to December 2016	. . .	14
Table 2.2 Periodic trends in recorded criminal incidents for major offences, NSW, January 2011 to December 2016	. . .	15
Table 2.3 Number and trends in recorded criminal incidents for all offences, NSW, January 2015 to December 2016	. . .	16
Table 2.4 Number and outcome of 24-month trend tests for major offences, NSW LGAs, all reports 2006 to 2016	. . .	17
Figure 2.1A Number of NSW LGAs with significant upward trends for major offences, January 2014 to December 2015 and January 2015 to December 2016	. . .	18
Figure 2.1B Number of NSW LGAs with significant downward trends for major offences, January 2014 to December 2015 and January 2015 to December 2016	. . .	18
SECTION 3: TRENDS, RATE COMPARISONS AND RECORDED CRIMINAL INCIDENTS FOR MAJOR OFFENCES, NSW REGIONS AND LOCAL GOVERNMENT AREAS (LGAS)	. . .	19
Table 3.1A Trends in recorded criminal incidents for major offences, NSW SAs, January 2015 to December 2016	. . .	20
Table 3.1B Ratio to NSW rate of recorded criminal incidents per 100,000 population, major offences, NSW SAs, 2016	. . .	20
Table 3.1C Number of recorded criminal incidents for major offences, NSW SAs, 2016	. . .	21
Table 3.1D Number of recorded criminal incidents for major offences, NSW SAs, 2015	. . .	21
Table 3.2A Trends in recorded criminal incidents for major offences, Greater Sydney SAs, January 2015 to December 2016	. . .	22
Table 3.2B Ratio to NSW rate of recorded criminal incidents per 100,000 population, major offences, Greater Sydney SAs, 2016	. . .	22
Table 3.2C Number of recorded criminal incidents for major offences, Greater Sydney SAs, 2016	. . .	23
Table 3.2D Number of recorded criminal incidents for major offences, Greater Sydney SAs, 2015	. . .	23
Table 3.3A Trends in recorded criminal incidents for major offences, NSW LGAs, January 2015 to December 2016	. . .	24

NSW Recorded Crime Statistics 2016

Table 3.3B	Ratio to NSW rate of recorded criminal incidents per 100,000 population, major offences, NSW LGAs, 2016	. . . 26
Table 3.3C	Number of recorded criminal incidents for major offences, NSW LGAs, 2016	. . . 28
Table 3.3D	Number of recorded criminal incidents for major offences, NSW LGAs, 2015	. . . 30
SECTION 4: METHODS OF PROCEEDINGS AGAINST ALLEGED OFFENDERS, 2014, 2015 AND 2016		. . . 33
Figure 4.1	Trends in referral methods for alleged offenders proceeded against to court, NSW, January 2015 to December 2016	. . . 34
Table 4.1	Number of alleged offenders recorded by NSW Police by method of legal proceedings, NSW, January 2014 to December 2016	. . . 35
SECTION 5: CLEARED CRIMINAL INCIDENTS AND WHETHER LEGAL PROCEEDINGS COMMENCED FOR SELECTED OFFENCES, JANUARY 2014 TO SEPTEMBER 2016		. . . 37
Table 5.1	Number of recorded criminal incidents for selected offences by clear up status and whether legal proceedings commenced, NSW, January 2014 to December 2014	. . . 38
Table 5.2	Number of recorded criminal incidents for selected offences by clear up status and whether legal proceedings commenced, NSW, January 2015 to December 2015	. . . 39
Table 5.3	Number of recorded criminal incidents for selected offences by clear up status and whether legal proceedings commenced, NSW, January 2016 to September 2016	. . . 40
Figure 5.1	Percentage of recorded criminal incidents for selected offences where legal proceedings commenced within 30 and 90 days, NSW, January 2016 to September 2016	. . . 41
APPENDICES		. . . 43
Appendix 1	Trends in recorded criminal incidents for NSW	. . . 44
Appendix 2	Definitions and Explanatory Notes	. . . 45
Appendix 3	BOCSAR offences mapped to Police incident categories	. . . 48
Appendix 4	Maps	. . . 54
Appendix 5	Local Government Areas in Greater Sydney Statistical Areas and NSW regional Statistical Areas	. . . 56

SECTION 1:

**OVERVIEW OF TRENDS
IN VIOLENT AND PROPERTY CRIME**

FIGURE 1.1: NSW LONG-TERM TREND IN VIOLENT OFFENCES*

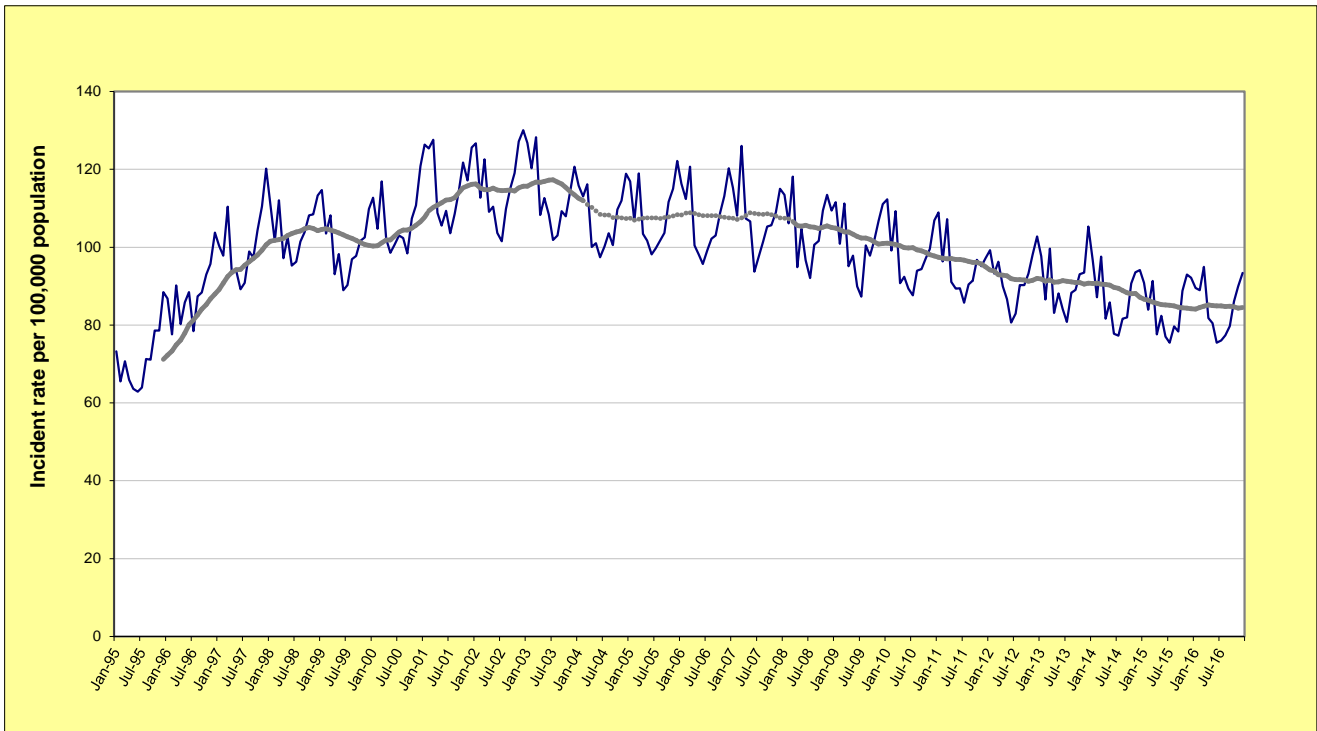
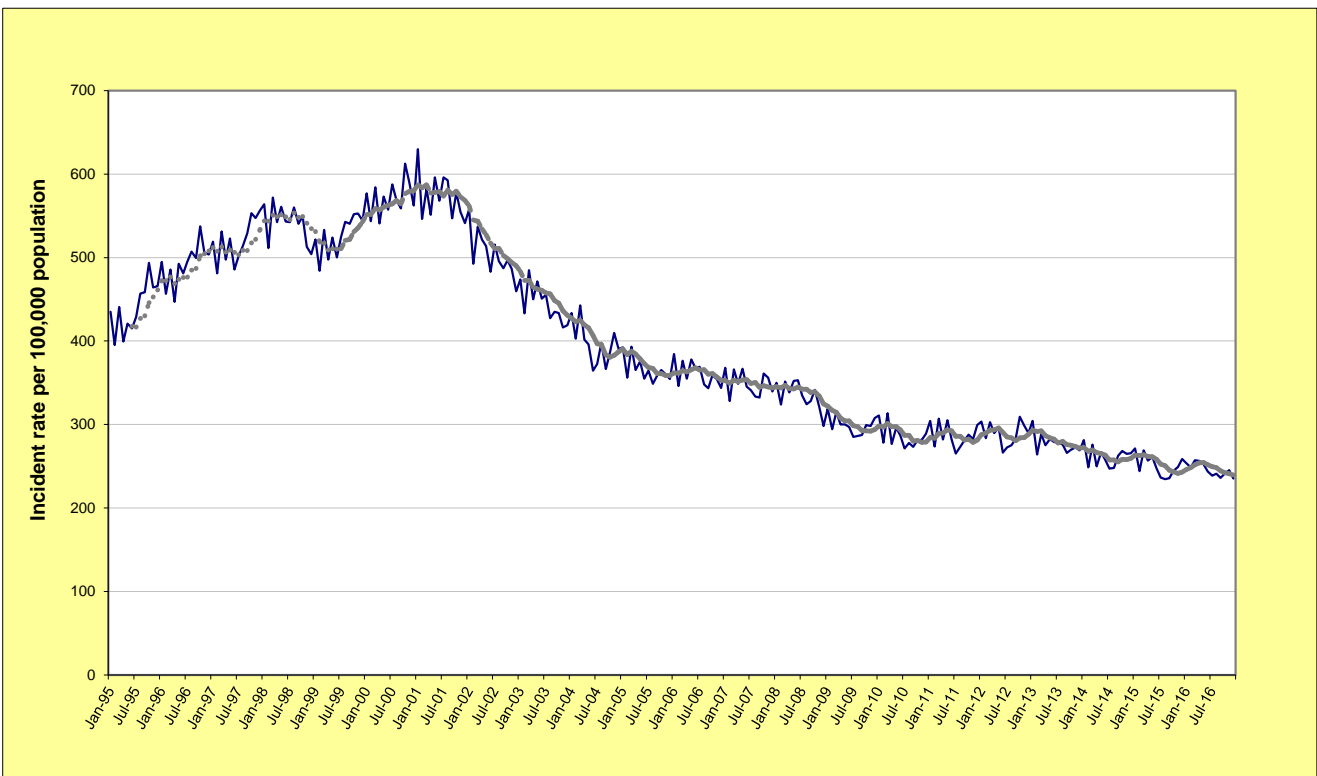


FIGURE 1.2: NSW LONG-TERM TREND IN PROPERTY OFFENCES**



* **Violent offences** include: murder, attempted murder, manslaughter, assault - domestic violence related, assault - non-domestic violence related, assault police, robbery without a weapon, robbery with a firearm, robbery with a weapon not a firearm, sexual assault and indecent assault / act of indecency / other sexual offences.

** **Property offences** include: break and enter dwelling, break and enter non-dwelling, motor vehicle theft, steal from motor vehicle, steal from retail store, steal from dwelling, steal from person, stock theft, other theft and fraud.

For further explanation of **violent offences** and **property offences**, see page 44, paragraph 7.

**TABLE 1.1: TRENDS[^] IN RECORDED CRIMINAL INCIDENTS, VIOLENT AND PROPERTY OFFENCES,
NSW STATISTICAL AREAS (SAs) AND NSW, JANUARY 2012 TO DECEMBER 2016**

NSW Statistical Area	Violent Offences*			Property Offences**		
	Annual percentage change over Jan 2015 - Dec 2016	Average annual percentage change over Jan 2012 - Dec 2016	Ratio to NSW rate [#]	Annual percentage change over Jan 2015 - Dec 2016	Average annual percentage change over Jan 2012 - Dec 2016	Ratio to NSW rate [#]
Greater Sydney	Stable	Stable	0.9	-5.3%	-3.8%	0.9
Capital Region	Stable	-2.6%	0.9	Stable	-3.4%	0.7
Central West	Stable	-2.9%	1.3	Stable	Stable	1.2
Coffs Harbour - Grafton	Stable	Stable	1.3	-5.7%	Stable	1.0
Far West and Orana	Stable	-4.1%	2.2	14.5%	4.4%	2.1
Hunter Valley excluding Newcastle	Stable	Stable	1.2	10.9%	Stable	1.2
Illawarra	Stable	Stable	0.9	-3.0%	-3.4%	1.0
Mid North Coast	Stable	-2.6%	1.2	Stable	-4.2%	1.0
Murray	Stable	-2.8%	1.1	Stable	-4.7%	1.1
New England and North West	Stable	-3.2%	1.6	Stable	Stable	1.4
Newcastle and Lake Macquarie	Stable	-2.0%	1.1	Stable	-3.2%	1.3
Richmond - Tweed	Stable	-3.6%	1.1	Stable	-1.9%	1.0
Riverina	Stable	Stable	1.4	Stable	Stable	1.3
Southern Highlands and Shoalhaven	Stable	Stable	0.9	Stable	-3.5%	0.8
NSW	Stable	Stable	1.0	-2.0%	-3.0%	1.0

[^] For further explanation of **trend results**, see page 44, paragraphs 5 and 6.

* **Violent offences** include: murder, attempted murder, manslaughter, assault - domestic violence related, assault - non-domestic violence related, assault police, robbery without a weapon, robbery with a firearm, robbery with a weapon not a firearm, sexual assault and indecent assault / act of indecency / other sexual offences.

** **Property offences** include: break and enter dwelling, break and enter non-dwelling, motor vehicle theft, steal from motor vehicle, steal from retail store, steal from dwelling, steal from person, stock theft, other theft and fraud.

For further explanation of **violent offences** and **property offences**, see page 44, paragraph 7.

[#] For further explanation of **rate calculation populations** and the **ratio to NSW rate**, see page 44, Note 2 and paragraph 8.

**TABLE 1.2: TRENDS[^] IN RECORDED CRIMINAL INCIDENTS, VIOLENT AND PROPERTY OFFENCES,
GREATER SYDNEY STATISTICAL AREAS (SAs), JANUARY 2012 TO DECEMBER 2016**

Greater Sydney Statistical Area	Violent Offences*			Property Offences**		
	Annual percentage change over Jan 2015 - Dec 2016	Average annual percentage change over Jan 2012 - Dec 2016	Ratio to NSW rate [#]	Annual percentage change over Jan 2015 - Dec 2016	Average annual percentage change over Jan 2012 - Dec 2016	Ratio to NSW rate [#]
Baulkham Hills and Hawkesbury	Stable	Stable	0.4	Stable	Stable	0.5
Blacktown	Stable	Stable	1.3	Stable	Stable	1.2
Central Coast	Stable	3.9%	1.2	Stable	-3.6%	1.0
City and Inner South	Stable	-3.2%	2.0	-8.1%	-5.2%	2.3
Eastern Suburbs	Stable	Stable	0.7	Stable	-5.4%	0.9
Inner South West	Stable	Stable	0.7	-11.5%	-7.7%	0.7
Inner West	Stable	Stable	0.6	-4.4%	-2.3%	1.0
North Sydney and Hornsby	Stable	-1.8%	0.4	-7.1%	-4.1%	0.6
Northern Beaches	Stable	-5.2%	0.4	-2.7%	-2.5%	0.6
Outer South West	Stable	Stable	1.1	Stable	-3.9%	0.9
Outer West and Blue Mountains	Stable	Stable	1.1	Stable	Stable	1.0
Parramatta	Stable	-3.2%	0.9	-9.4%	-3.7%	1.0
Ryde	Stable	Stable	0.4	-14.5%	Stable	0.6
South West	Stable	Stable	0.9	-4.9%	-2.6%	0.9
Sutherland	Stable	Stable	0.6	-6.2%	-4.7%	0.5

[^] For further explanation of **trend results**, see page 44, paragraphs 5 and 6.

* **Violent offences** include: murder, attempted murder, manslaughter, assault - domestic violence related, assault - non-domestic violence related, assault police, robbery without a weapon, robbery with a firearm, robbery with a weapon not a firearm, sexual assault and indecent assault / act of indecency / other sexual offences.

** **Property offences** include: break and enter dwelling, break and enter non-dwelling, motor vehicle theft, steal from motor vehicle, steal from retail store, steal from dwelling, steal from person, stock theft, other theft and fraud.

For further explanation of **violent offences** and **property offences**, see page 44, paragraph 7.

For further explanation of **rate calculation populations** and the **ratio to NSW rate**, see page 44, Note 2 and paragraph 8.

**TABLE 1.3: TRENDS^A IN RECORDED CRIMINAL INCIDENTS, VIOLENT AND PROPERTY OFFENCES,
NSW LOCAL GOVERNMENT AREAS (LGAs), JANUARY 2012 TO DECEMBER 2016**

NSW LGAs	Violent Offences*			Property Offences*		
	Annual percentage change over Jan 2015 - Dec 2016	Average annual percentage change Jan 2012 - Dec 2016	Ratio [#] to NSW rate	Annual percentage change over Jan 2015 - Dec 2016	Average annual percentage change Jan 2012 - Dec 2016	Ratio [#] to NSW rate
Albury	ns	ns	1.4	15.9	-5.2	1.5
Armidale Dumaresq	ns	-5.3	1.4	ns	12.9	2.2
Ashfield	-19.3	ns	0.6	ns	ns	0.9
Auburn	ns	-5.0	0.8	ns	-3.9	0.9
Ballina	ns	-5.7	0.8	ns	ns	0.9
Bairnald	ns	-10.6	.	ns	ns	.
Bankstown	ns	ns	0.9	-8.3	-8.3	0.9
Bathurst Regional	ns	-5.1	1.1	ns	3.3	1.4
Bega Valley	ns	ns	0.8	31.3	ns	0.7
Bellingen	ns	ns	0.7	ns	-4.5	0.6
Berrigan	ns	-12.0	0.4	ns	ns	0.5
Blacktown	ns	ns	1.3	ns	ns	1.2
Bland	ns	ns	0.9	ns	-10.5	0.6
Blayney	ns	ns	0.6	49.2	ns	0.9
Blue Mountains	ns	-3.3	0.7	ns	-4.1	0.6
Bogan	ns	-13.4	1.5	-29.1	ns	1.2
Bombala	.	.	.	ns	ns	.
Boorowa	.	.	.	ns	ns	.
Botany Bay	ns	ns	0.8	ns	-4.0	1.1
Bourke	ns	-8.7	.	ns	ns	.
Brewarrina	ns	-11.6	.	ns	-10.7	.
Broken Hill	ns	ns	1.9	32.2	-2.5	1.5
Burwood	ns	ns	0.7	-9.3	-3.7	1.4
Byron	ns	-8.6	1.2	ns	ns	1.6
Cabonne	ns	ns	0.6	ns	-7.2	0.5
Camden	ns	7.2	0.7	ns	ns	0.6
Campbelltown	ns	-2.5	1.3	ns	-3.5	1.1
Canada Bay	ns	ns	0.4	ns	ns	0.8
Canterbury	ns	ns	0.7	-16.3	-5.7	0.7
Carrathool	ns	ns	.	ns	ns	.
Central Darling	ns	-10.2	.	63.3	ns	.
Cessnock	ns	ns	1.4	ns	ns	1.6
Clarence Valley	ns	ns	1.2	ns	ns	1.1
Cobar	ns	ns	1.7	ns	ns	1.6
Coffs Harbour	ns	ns	1.5	ns	ns	1.1
Conargo
Coolamon	ns	ns	0.8	ns	ns	0.5
Cooma-Monaro	ns	-1.7	1.1	-17.5	-20.0	0.5
Coonamble	ns	ns	2.6	ns	ns	2.8
Cootamundra	ns	ns	0.9	ns	-8.2	0.5
Corowa Shire	ns	ns	0.7	ns	-8.6	0.9
Cowra	ns	ns	1.6	16.7	8.7	1.4
Deniliquin	ns	ns	1.4	ns	ns	1.0
Dubbo	ns	ns	1.8	ns	7.4	2.6
Dungog	ns	ns	0.8	ns	ns	0.6
Eurobodalla	ns	ns	1.0	ns	-4.0	1.0
Fairfield	ns	-2.3	0.8	-7.2	-6.0	0.8
Forbes	ns	ns	1.8	ns	ns	1.4
Gilgandra	ns	ns	1.7	-44.4	ns	1.0
Glen Innes Severn	ns	17.7	2.3	66.0	ns	1.5
Gloucester	ns	ns	1.1	10.4	11.3	0.7
Gosford	ns	5.3	1.0	ns	-4.0	0.9
Goulburn Mulwaree	ns	ns	1.0	ns	ns	0.8
Great Lakes	ns	ns	1.2	ns	ns	1.0
Greater Hume Shire	ns	ns	0.6	ns	-7.7	0.5
Greater Taree	ns	ns	1.3	ns	-5.2	1.1
Griffith	ns	ns	1.9	ns	ns	1.3
Gundagai	ns	ns	0.8	61.0	15.7	1.5
Gunnedah	ns	ns	1.4	-43.3	-14.6	0.9
Guyra	ns	-8.0	1.1	-26.8	ns	0.8
Gwydir	ns	ns	0.8	28.6	ns	0.7
Harden	ns	ns	1.0	ns	ns	0.4
Hawkesbury	ns	ns	0.9	ns	-2.3	0.9
Hay	ns	ns	.	ns	ns	.
Holroyd	ns	ns	0.8	-19.0	-3.5	0.9
Hornsby	ns	ns	0.3	-10.2	ns	0.5
Hunters Hill	ns	ns	0.3	ns	-9.7	0.5
Hurstville	ns	ns	0.6	-8.3	-7.4	0.7
Inverell	ns	-5.1	1.6	ns	6.3	1.2
Jerilderie
Junee	ns	16.0	1.7	ns	ns	0.6
Kempsey	ns	ns	1.6	ns	ns	1.6
Kiama	ns	ns	0.5	ns	ns	0.6
Kogarah	ns	ns	0.6	-14.8	-9.0	0.5
Ku-ring-gai	ns	ns	0.2	ns	ns	0.4
Kyogle	ns	ns	1.1	ns	ns	0.7
Lachlan	ns	ns	2.0	ns	ns	1.2
Lake Macquarie	ns	-2.5	0.9	ns	-4.6	1.0
Lane Cove	ns	ns	0.3	ns	-6.4	0.4
Leeton	ns	ns	1.3	ns	ns	1.0

**TABLE 1.3: TRENDS[^] IN RECORDED CRIMINAL INCIDENTS, VIOLENT AND PROPERTY OFFENCES,
NSW LOCAL GOVERNMENT AREAS (LGAs), JANUARY 2012 TO DECEMBER 2016**

NSW LGAs	Violent Offences*			Property Offences*		
	Annual percentage change over Jan 2015 - Dec 2016	Average annual percentage change Jan 2012 - Dec 2016	Ratio [#] to NSW rate	Annual percentage change over Jan 2015 - Dec 2016	Average annual percentage change Jan 2012 - Dec 2016	Ratio [#] to NSW rate
Leichhardt	ns	ns	0.6	ns	-2.5	0.9
Lismore	ns	ns	1.5	ns	ns	1.1
Lithgow	ns	-2.0	1.2	ns	ns	1.2
Liverpool	10.5	ns	1.1	ns	ns	1.1
Liverpool Plains	ns	ns	1.6	28.4	10.4	0.9
Lockhart	.	.	0.5	ns	ns	0.6
Lord Howe Island
Maitland	ns	4.1	1.3	20.7	4.4	1.4
Manly	ns	-8.1	0.6	ns	-3.6	0.9
Marrickville	-9.7	-4.4	0.9	-18.5	-6.6	1.0
Mid-Western Regional	ns	ns	1.3	ns	ns	0.8
Moree Plains	ns	ns	3.6	ns	-4.2	2.9
Mosman	ns	ns	0.3	-29.3	-9.0	0.4
Murray	ns	ns	0.6	72.1	ns	1.4
Murrumbidgee	ns	ns	.	ns	ns	.
Muswellbrook	ns	ns	1.4	ns	ns	1.4
Nambucca	ns	ns	1.6	ns	ns	1.0
Narrabri	ns	4.4	1.6	ns	ns	1.2
Narrandera	60.8	ns	1.4	ns	ns	1.4
Narromine	ns	ns	1.8	ns	11.0	2.2
Newcastle	ns	-1.9	1.4	ns	-2.3	1.6
North Sydney	ns	ns	0.5	-12.7	-6.0	0.7
Oberon	ns	ns	0.8	ns	ns	0.7
Orange	ns	ns	1.6	ns	ns	1.7
Palerang	ns	-10.5	0.3	ns	ns	0.4
Parkes	ns	ns	1.9	ns	ns	1.3
Parramatta	ns	-4.0	1.0	-6.9	-3.3	1.2
Penrith	ns	ns	1.3	ns	ns	1.1
Pittwater	ns	ns	0.4	ns	-3.6	0.6
Port Macquarie-Hastings	ns	-4.3	1.0	ns	-5.5	0.8
Port Stephens	ns	ns	1.2	ns	-6.7	1.0
Queanbeyan	ns	ns	0.9	ns	ns	1.0
Randwick	ns	ns	0.8	-6.5	-3.8	0.8
Richmond Valley	ns	ns	1.5	ns	-5.0	1.1
Rockdale	ns	ns	0.7	-18.8	-9.2	0.7
Ryde	ns	ns	0.5	-18.3	ns	0.7
Shellharbour	ns	ns	0.9	ns	ns	0.9
Shoalhaven	ns	-3.0	1.1	ns	-4.4	0.9
Singleton	ns	ns	0.8	ns	-7.8	1.0
Snowy River	ns	ns	0.6	ns	ns	0.5
Strathfield	10.2	ns	0.8	ns	ns	1.2
Sutherland Shire	ns	ns	0.6	-6.2	-4.7	0.5
Sydney	ns	-2.9	2.6	-5.6	-5.1	3.0
Tamworth Regional	ns	-7.9	1.4	ns	-5.0	1.3
Temora	ns	ns	0.8	ns	ns	0.8
Tenterfield	ns	ns	1.4	ns	ns	1.2
The Hills Shire	ns	ns	0.4	ns	ns	0.6
Tumbarumba	ns	.	1.1	ns	ns	0.7
Tumut Shire	ns	ns	1.3	92.9	17.1	1.4
Tweed	ns	ns	0.8	ns	-2.3	0.8
Unincorporated Far West
Upper Hunter Shire	ns	ns	0.7	ns	-8.5	0.7
Upper Lachlan Shire	-22.9	ns	0.5	-40.7	ns	0.3
Uralla	ns	ns	1.0	ns	ns	0.4
Urana
Wagga Wagga	ns	ns	1.5	ns	ns	1.6
Wakool	.	.	0.4	ns	ns	0.6
Walcha	ns	-12.0	0.7	ns	ns	0.6
Walgett	-29.3	-10.0	3.4	-26.5	-5.3	1.6
Warren	ns	ns	.	ns	ns	.
Warringham	ns	-4.3	0.4	ns	ns	0.6
Warrumbungle Shire	ns	ns	1.4	ns	ns	0.9
Waverley	ns	4.7	0.9	ns	-4.9	1.1
Weddin	ns	ns	0.6	ns	ns	0.5
Wellington	ns	ns	2.6	53.0	18.2	2.9
Wentworth	ns	-8.7	1.5	ns	-10.0	1.2
Willoughby	ns	ns	0.4	ns	ns	0.9
Wingecarribee	ns	ns	0.6	7.8	ns	0.6
Wollondilly	ns	4.6	0.8	ns	ns	0.5
Wollongong	ns	-1.1	1.0	-3.3	-3.6	1.0
Woollahra	ns	ns	0.5	ns	-9.8	0.7
Wyong	ns	2.8	1.4	ns	-3.3	1.1
Yass Valley	ns	ns	0.6	ns	ns	0.4
Young	ns	ns	1.3	ns	-8.1	0.8
NSW	ns	ns	1.0	-2.0	-3.0	1.0

[^] For further explanation of **trend results**, see page 44, paragraphs 5 and 6.

* For further explanation of **violent offences** and **property offences**, see page 44, paragraph 7.

For further explanation of **rate calculation populations** and the **ratio to NSW rate**, see page 44, Note 2 and paragraph 8.

Sydney LGA can be considered a special case since the population used to calculate the rate is much lower than the population using the area for work and entertainment. This will be reflected in higher incident rates.

SECTION 2:

**OVERVIEW OF TRENDS
IN RECORDED CRIME
BY OFFENCE TYPE**

**TABLE 2.1: TRENDS[^] IN RECORDED CRIMINAL INCIDENTS FOR MAJOR OFFENCES,
NSW, JANUARY 2012 TO DECEMBER 2016**

Offence category	Trend result and annual percentage change Jan 2015 - Dec 2016	Trend result and average annual percentage change Jan 2012 - Dec 2016
Murder *	Stable	Stable
Domestic violence related assault	Stable	Stable
Non-domestic violence related assault	Stable	Down by 3.0%
Sexual assault	Stable	Stable
Indecent assault, act of indecency and other sexual offences	Stable	Up by 4.2%
Robbery without a weapon	Down by 13.3%	Down by 16.4%
Robbery with a firearm	Stable	Down by 19.2%
Robbery with a weapon not a firearm	Down by 13.9%	Down by 12.8%
Break and enter dwelling	Down by 6.2%	Down by 7.6%
Break and enter non-dwelling	Stable	Down by 8.0%
Motor vehicle theft	Down by 7.3%	Down by 8.0%
Steal from motor vehicle	Stable	Down by 3.8%
Steal from retail store	Up by 6.1%	Stable
Steal from dwelling	Stable	Stable
Steal from person	Down by 13.3%	Down by 11.6%
Fraud	Down by 3.9%	Up by 3.4%
Malicious damage to property	Stable	Down by 6.7%

[^] For further explanation of **trend results**, see page 44, paragraphs 5 and 6.

* For murder, the trend test is applied to the monthly number of recorded victims rather than criminal incidents.

TABLE 2.2: PERIODIC TRENDS[^] IN RECORDED CRIMINAL INCIDENTS FOR MAJOR OFFENCES, NSW, JANUARY 2011 TO DECEMBER 2016

Offence category	Trend result and annual percentage change				
	Jan 2011 - Dec 2012	Jan 2012 - Dec 2013	Jan 2013 - Dec 2014	Jan 2014 - Dec 2015	Jan 2015 - Dec 2016
Murder *	Stable	Stable	Stable	Stable	Stable
Domestic violence related assault	Stable	Stable	Stable	Stable	Stable
Non-domestic violence related assault	Stable	Stable	Stable	Stable	Stable
Sexual assault	Stable	Stable	5.5%	Stable	Stable
Indecent assault, act of indecency and other sexual offences	Stable	11.4%	Stable	Stable	Stable
Robbery without a weapon	Stable	-11.4%	-21.5%	-19.0%	-13.3%
Robbery with a firearm	Stable	Stable	Stable	-40.5%	Stable
Robbery with a weapon not a firearm	Stable	Stable	-14.1%	-20.4%	-13.9%
Break and enter dwelling	Stable	-13.1%	Stable	-6.9%	-6.2%
Break and enter non-dwelling	-4.6%	-10.3%	-12.4%	-7.0%	Stable
Motor vehicle theft	-6.7%	-12.8%	Stable	Stable	-7.3%
Steal from motor vehicle	Stable	-4.9%	-4.6%	-6.5%	Stable
Steal from retail store	Stable	Stable	-5.8%	7.2%	6.1%
Steal from dwelling	Stable	Stable	3.5%	Stable	Stable
Steal from person	Stable	-11.5%	-14.5%	Stable	-13.3%
Fraud	16.9%	15.2%	Stable	Stable	-3.9%
Malicious damage to property	Stable	-7.9%	-10.6%	Stable	Stable

[^] For further explanation of **trend results**, see page 44, paragraphs 5 and 6.

* For murder, the trend test is applied to the monthly number of recorded victims rather than criminal incidents.

TABLE 2.3: NUMBER AND TRENDS[^] IN RECORDED CRIMINAL INCIDENTS FOR ALL OFFENCES, NSW, JANUARY 2015 TO DECEMBER 2016

Offence Category		Number of recorded criminal incidents		Trend [^] over 24-month period	
		Jan 2015 - Dec 2015	Jan 2016 - Dec 2016	Trend test result	Percentage change
Homicide	Murder*	74	70	Stable	
	Attempted murder	29	27	Stable	
	Murder accessory, conspiracy	8	3	.	
	Manslaughter*	5	5	.	
Assault	Domestic violence related assault	29,106	29,044	Stable	
	Non-domestic violence related assault	30,849	31,535	Stable	
	Assault Police	2,473	2,307	Stable	
Sexual offences	Sexual assault	4,924	5,066	Stable	
	Indecent assault, act of indecency and other sexual offences	6,821	6,838	Stable	
Abduction and kidnapping		250	227	Down	-9.2%
Robbery	Robbery without a weapon	1,569	1,360	Down	-13.3%
	Robbery with a firearm	178	163	Stable	
	Robbery with a weapon not a firearm	953	821	Down	-13.9%
Blackmail and extortion		137	111	Stable	
Harassment, threatening behaviour and private nuisance		30,346	30,434	Stable	
Other offences against the person		1,313	1,259	Stable	
Theft	Break and enter dwelling	31,628	29,656	Down	-6.2%
	Break and enter non-dwelling	11,906	11,687	Stable	
	Receiving or handling stolen goods	8,160	8,323	Stable	
	Motor vehicle theft	14,125	13,100	Down	-7.3%
	Steal from motor vehicle	39,975	40,451	Stable	
	Steal from retail store	22,080	23,426	Up	6.1%
	Steal from dwelling	21,465	21,308	Stable	
	Steal from person	5,722	4,959	Down	-13.3%
	Stock theft	501	677	Up	35.1%
	Fraud	51,984	49,968	Down	-3.9%
Other theft	29,789	29,422	Stable		
Arson		5,034	5,563	Up	10.5%
Malicious damage to property		64,041	62,703	Stable	
Drug offences	Possession and/or use of cocaine	1,254	1,327	Up	5.8%
	Possession and/or use of narcotics	857	921	Up	7.5%
	Possession and/or use of cannabis	19,442	18,844	Stable	
	Possession and/or use of amphetamines	6,930	7,475	Up	7.9%
	Possession and/or use of ecstasy	2,183	2,610	Stable	
	Possession and/or use of other drugs	3,841	4,216	Up	9.8%
	Dealing, trafficking in cocaine	377	427	Stable	
	Dealing, trafficking in narcotics	477	420	Stable	
	Dealing, trafficking in cannabis	734	862	Stable	
	Dealing, trafficking in amphetamines	2,155	2,235	Stable	
	Dealing, trafficking in ecstasy	596	632	Stable	
	Dealing, trafficking in other drugs	324	271	Stable	
	Cultivating cannabis	1,248	1,175	Stable	
	Manufacture drug	113	55	Down	-51.3%
	Importing drugs	36	54	Stable	
Other drug offences	5,416	5,343	Stable		
Prohibited and regulated weapons offences		11,880	12,588	Up	6.0%
Disorderly conduct	Trespass	9,469	10,205	Up	7.8%
	Offensive conduct	5,917	5,486	Stable	
	Offensive language	4,080	3,732	Down	-8.5%
	Criminal intent	2,242	2,284	Stable	
Betting and gaming offences		64	186	Stable	
Liquor offences		11,311	10,930	Stable	
Pornography offences		577	560	Stable	
Prostitution offences		122	51	Down	-58.2%
Against justice procedures	Escape custody	187	201	Stable	
	Breach Apprehended Violence Order	14,179	15,482	Stable	
	Breach bail conditions	37,133	42,123	Up	13.4%
	Fail to appear	725	740	Stable	
	Resist or hinder officer	6,414	6,406	Stable	
	Other offences against justice procedures	521	568	Stable	
Transport regulatory offences		119,324	120,068	Stable	
Other offences		15,831	15,167	Stable	

[^] For further explanation of **trend results**, see page 44, paragraphs 5 and 6.

* For murder and manslaughter incidents, the trend test is applied to the monthly number of recorded victims rather than criminal incidents.

TABLE 2.4: NUMBER AND OUTCOME[^] OF 24-MONTH TREND TESTS FOR MAJOR OFFENCES, NSW LOCAL GOVERNMENT AREAS (LGAs), ALL REPORTS 2008 TO 2016

	<i>Final month for 24-month trend test</i>	<i>Number of LGAs</i>	<i>Number of trend tests</i>	<i>Stable trends (%)</i>	<i>Downward trends (%)</i>	<i>Upward trends (%)</i>
2008	March	154	1,429	88.0	6.3	5.7
	June	154	1,430	86.6	8.3	5.2
	September	154	1,422	82.3	12.5	5.2
	December	154	1,422	84.0	10.3	5.6
2009	March	154	1,408	84.6	9.9	5.5
	June	154	1,412	83.9	11.5	4.5
	September	154	1,404	81.4	14.2	4.4
	December	154	1,414	83.2	12.7	4.1
2010	March	154	1,392	82.9	11.8	5.3
	June	154	1,397	84.3	11.8	3.9
	September	154	1,411	82.3	13.7	4.0
	December	154	1,397	86.6	9.7	3.7
2011	March	154	1,388	86.9	7.9	5.3
	June	154	1,393	86.9	8.8	4.3
	September	154	1,394	84.0	12.4	3.6
	December	154	1,387	86.5	9.0	4.5
2012	March	154	1,386	86.2	6.1	7.7
	June	154	1,378	86.6	7.8	5.7
	September	154	1,378	85.8	9.8	4.4
	December	154	1,385	86.4	7.7	5.8
2013	March	154	1,375	85.9	7.1	7.0
	June	154	1,370	85.5	8.5	6.1
	September	154	1,379	83.5	11.5	5.0
	December	154	1,384	84.0	11.5	4.6
2014	March	154	1,368	84.9	10.1	5.0
	June	154	1,365	83.1	13.7	3.2
	September	154	1,364	80.2	17.2	2.6
	December	154	1,360	84.8	11.1	4.1
2015	March	154	1,350	86.1	9.4	4.4
	June	154	1,357	86.6	10.1	3.3
	September	154	1,348	85.9	11.9	2.2
	December	154	1,355	86.7	9.4	3.8
2016	March	154	1,355	85.9	6.7	7.4
	June	154	1,349	84.2	9.5	6.3
	September	154	1,339	83.3	11.9	4.9
	December	154	1,343	86.7	8.1	5.1

[^] This table summarises the aggregate outcomes of statistical tests for significant upward or downward trends in the number of recorded criminal incidents in major offence categories over a 24-month period across all NSW LGAs with a population of 3,000 or more. The trend test used is Kendall's rank-order correlation test. A trend test was not performed if there were fewer than 20 incidents in either of the two years for the period in question, hence no trend tests for **murder** were calculated for this table. These tests were carried out on 16 major offence categories (**assault** incidents separated into **domestic violence related** and **non-domestic violence related**). **Assault Police** incidents have been recorded separately from the two major assault series from 2008 onwards.

FIGURE 2.1A: NUMBER OF NSW LGAs WITH SIGNIFICANT UPWARD TRENDS[^], MAJOR OFFENCES, JANUARY 2014 TO DECEMBER 2015 AND JANUARY 2015 TO DECEMBER 2016

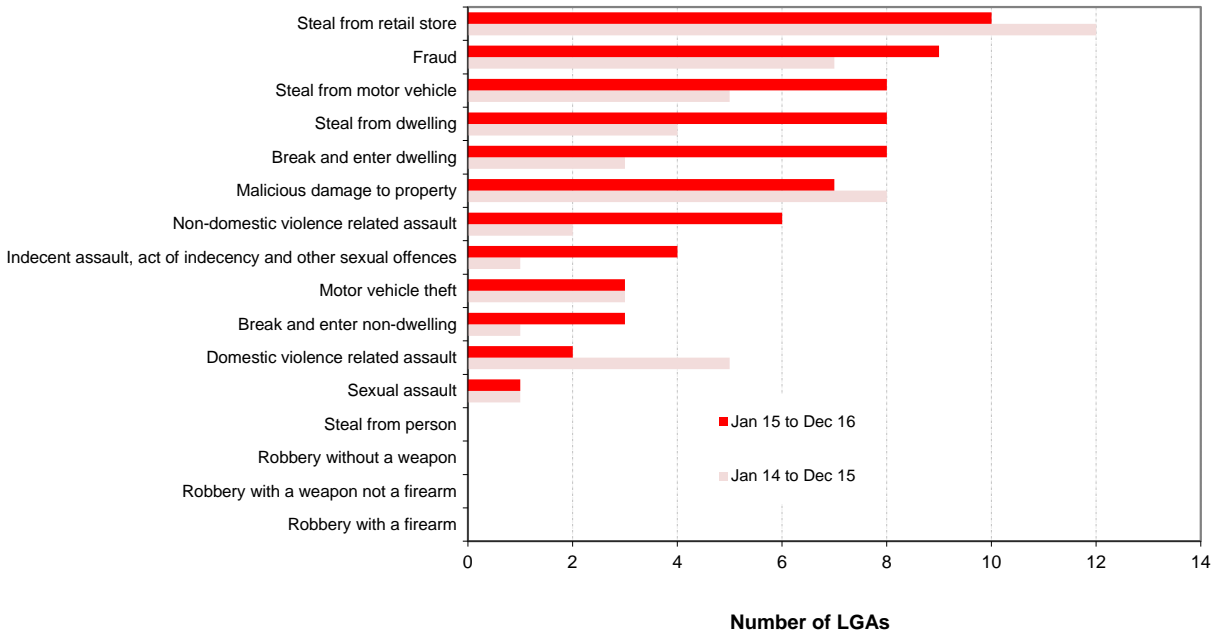
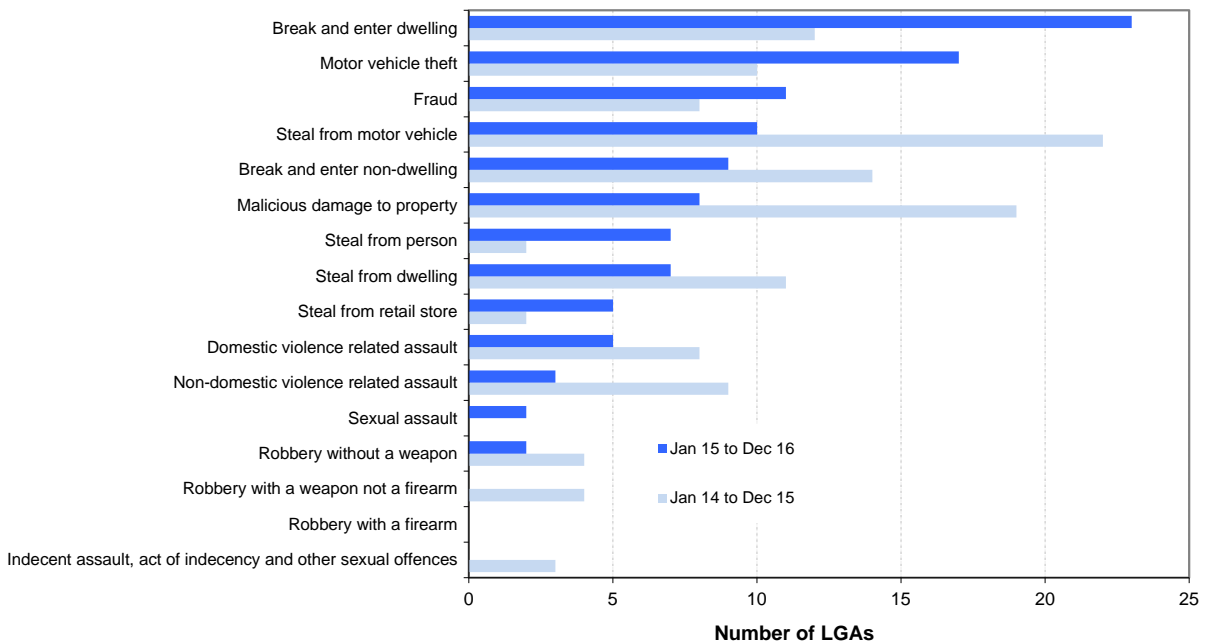


FIGURE 2.1B: NUMBER OF NSW LGAs WITH SIGNIFICANT DOWNWARD TRENDS[^], MAJOR OFFENCES, JANUARY 2014 TO DECEMBER 2015 AND JANUARY 2015 TO DECEMBER 2016



[^] For further explanation of trend results, see page 44, paragraphs 5 and 6.

SECTION 3:

**TRENDS, RATE COMPARISONS AND
RECORDED CRIMINAL INCIDENTS
FOR MAJOR OFFENCES
NSW REGIONS AND LGAS
2015 AND 2016**

TABLE 3.1A: TRENDS[^] IN RECORDED CRIMINAL INCIDENTS FOR MAJOR OFFENCES, NSW STATISTICAL AREAS (SAs), JANUARY 2015 TO DECEMBER 2016

NSW Statistical Area	Murder *	Domestic violence related assault	Non-domestic violence related assault	Sexual assault	Indecent assault, act of indecency and other sexual offences	Robbery without a weapon	Robbery with a firearm	Robbery with a weapon not a firearm	Break and enter dwelling	Break and enter non-dwelling	Motor vehicle theft	Steal from motor vehicle	Steal from retail store	Steal from dwelling	Steal from person	Fraud	Malicious damage to property
Greater Sydney	ns	ns	ns	ns	ns	-16.3	ns	-18.3	-10.7	ns	-13.9	ns	ns	ns	-14.7	-8.1	ns
Capital Region	.	ns	ns	ns	ns	.	.	.	ns	ns	ns	ns	ns	ns	ns	ns	ns
Central West	.	ns	ns	ns	ns	ns	.	.	ns	ns	ns	ns	ns	ns	ns	ns	ns
Coffs Harbour - Grafton	.	ns	ns	ns	ns	.	.	ns	ns	ns	ns	-15.2	ns	ns	ns	34.6	ns
Far West and Orana	.	ns	ns	ns	ns	.	.	.	22.4	-4.7	34.8	ns	28.3	13.7	ns	ns	ns
Hunter Valley excluding Newcastle	.	ns	ns	ns	ns	ns	.	ns	20.3	ns	17.4	ns	ns	20.4	ns	ns	ns
Illawarra	.	ns	ns	ns	ns	ns	.	ns	-17.0	ns	ns	ns	ns	-13.0	-28.2	ns	ns
Mid North Coast	.	ns	ns	ns	ns	.	.	ns	ns	ns	ns	ns	ns	ns	ns	ns	ns
Murray	.	ns	ns	ns	-26.8	.	.	.	ns	ns	ns	36.4	ns	ns	ns	ns	ns
New England and North West	.	ns	ns	ns	ns	ns	.	ns	ns	ns	ns	ns	ns	18.0	ns	26.8	ns
Newcastle and Lake Macquarie	.	ns	ns	ns	ns	ns	.	ns	ns	-18.1	ns	ns	21.7	8.4	ns	ns	9.0
Richmond - Tweed	.	ns	ns	ns	ns	ns	.	.	ns	ns	ns	ns	ns	ns	ns	19.3	ns
Riverina	.	ns	ns	ns	ns	.	.	.	ns	-19.1	ns	ns	ns	ns	ns	ns	ns
Southern Highlands and Shoalhaven	.	ns	ns	ns	ns	.	.	.	-18.7	ns	ns	ns	ns	ns	ns	ns	ns
NSW	ns	ns	ns	ns	ns	-13.3	ns	-13.9	-6.2	ns	-7.3	ns	6.1	ns	-13.3	-3.9	ns

[^] For further explanation of **trend results**, see page 44, paragraphs 5 and 6.

* Any trend test for the offence of murder is for the number of victims, not incidents.

TABLE 3.1B: RATIO TO NSW RATE[^] OF RECORDED CRIMINAL INCIDENTS PER 100,000 POPULATION, MAJOR OFFENCES, NSW SAs, 2016

NSW Statistical Area	Murder *	Domestic violence related assault	Non-domestic violence related assault	Sexual assault	Indecent assault, act of indecency and other sexual offences	Robbery without a weapon	Robbery with a firearm	Robbery with a weapon not a firearm	Break and enter dwelling	Break and enter non-dwelling	Motor vehicle theft	Steal from motor vehicle	Steal from retail store	Steal from dwelling	Steal from person	Fraud	Malicious damage to property
Greater Sydney	1.1	0.9	0.9	0.8	0.8	1.2	1.1	1.0	0.8	0.7	0.9	0.9	1.0	0.8	1.2	1.1	0.8
Capital Region	0.0	0.8	0.9	1.1	1.1	0.2	0.4	0.2	0.8	1.0	0.8	0.9	0.8	0.8	0.2	0.5	1.0
Central West	1.6	1.3	1.3	1.6	1.5	0.6	1.3	1.1	1.8	2.0	1.3	1.2	1.1	1.5	0.5	0.8	1.5
Coffs Harbour - Grafton	0.0	1.5	1.2	1.7	1.4	0.4	0.3	1.4	1.2	1.8	1.1	1.0	1.0	1.3	0.7	0.7	1.3
Far West and Orana	3.8	2.6	1.9	2.3	2.0	0.8	1.2	1.6	3.8	3.4	2.6	2.6	1.8	2.5	1.1	0.8	2.5
Hunter Valley excluding Newcastle	0.4	1.4	1.0	1.4	1.2	0.4	1.2	1.2	1.5	1.7	1.8	1.5	1.0	1.5	0.5	0.7	1.3
Illawarra	0.7	0.9	0.9	1.0	0.8	0.9	1.2	0.9	0.9	1.4	1.1	1.2	1.1	0.9	0.6	0.6	1.0
Mid North Coast	0.5	1.2	1.1	1.7	1.6	0.3	0.0	1.1	1.3	1.8	1.1	0.8	0.8	1.4	0.5	0.6	1.2
Murray	1.9	1.2	1.0	1.2	1.2	0.7	1.2	0.6	1.3	2.0	1.0	1.3	1.0	1.5	0.4	0.6	1.3
New England and North West	1.2	1.8	1.5	1.7	1.7	0.7	0.3	1.1	2.2	2.3	1.2	1.5	1.3	1.9	0.5	0.8	2.0
Newcastle and Lake Macquarie	0.6	1.1	1.2	1.2	1.2	1.4	1.4	1.2	1.2	1.1	1.6	1.6	1.2	1.3	1.1	1.1	1.3
Richmond - Tweed	1.4	0.9	1.1	1.3	1.3	0.5	0.0	0.8	0.9	1.3	1.0	1.0	0.8	1.0	0.9	0.8	1.1
Riverina	1.4	1.6	1.3	1.4	1.3	0.9	0.3	1.3	2.0	1.6	1.1	1.4	1.3	1.7	0.4	0.6	1.6
Southern Highlands and Shoalhaven	0.0	0.9	0.9	1.1	1.2	0.4	0.3	0.6	1.0	1.1	0.8	0.8	0.8	1.0	0.2	0.7	1.0
NSW	1.0	1.0	1.0	1.0	1.0	1.0	1.0	1.0	1.0	1.0	1.0	1.0	1.0	1.0	1.0	1.0	1.0

[^] For further explanation of **rate calculation populations** and the **ratio to NSW rate**, see page 44, Note 2 and paragraph 8.

* The rate calculations on the offence of murder is for the number of victims, not incidents.

TABLE 3.1C: NUMBER OF RECORDED CRIMINAL INCIDENTS FOR MAJOR OFFENCES, NSW SAs, 2016

NSW Statistical Area	Murder *	Domestic violence related assault	Non-domestic violence related assault	Sexual assault	Indecent assault, act of indecency and other sexual offences	Robbery without a weapon	Robbery with a firearm	Robbery with a weapon not a firearm	Break and enter dwelling	Break and enter non-dwelling	Motor vehicle theft	Steal from motor vehicle	Steal from retail store	Steal from dwelling	Steal from person	Fraud	Malicious damage to property
Greater Sydney	48	16,226	17,733	2,507	3,691	1,030	119	528	14,846	5,019	7,234	22,348	14,569	11,121	3,888	36,720	33,047
Capital Region	0	693	803	161	215	8	2	4	659	324	304	1,017	548	510	36	740	1,832
Central West	3	1,069	1,111	219	281	24	6	26	1,443	658	478	1,357	702	864	67	1,083	2,603
Coffs Harbour - Grafton	0	768	705	154	167	11	1	20	636	378	261	703	407	507	63	661	1,462
Far West and Orana	4	1,192	949	182	212	17	3	21	1,780	626	538	1,625	649	821	84	626	2,427
Hunter Valley excluding Newcastle	1	1,404	1,094	248	281	21	7	36	1,549	712	815	2,072	804	1,156	90	1,244	2,758
Illawarra	2	1,052	1,120	205	216	50	8	28	1,081	628	562	1,955	1,050	788	117	1,166	2,421
Mid North Coast	1	1,009	986	240	306	11	0	26	1,049	595	388	854	533	835	69	867	2,129
Murray	2	523	485	96	123	15	3	7	613	365	203	802	367	489	32	467	1,222
New England and North West	2	1,278	1,144	215	289	24	1	23	1,592	651	371	1,478	760	1,002	60	979	3,045
Newcastle and Lake Macquarie	2	1,512	1,827	308	398	90	11	48	1,705	627	1,001	3,168	1,407	1,342	258	2,784	4,088
Richmond - Tweed	3	845	1,096	219	291	24	0	20	901	477	437	1,315	615	716	140	1,318	2,177
Riverina	2	958	872	151	188	25	1	23	1,246	385	310	1,160	635	755	37	654	2,047
Southern Highlands and Shoalhaven	0	510	522	112	162	10	1	9	556	239	197	595	380	402	18	648	1,276
NSW	70	29,044	31,535	5,066	6,838	1,360	163	821	29,656	11,687	13,100	40,451	23,426	21,308	4,959	49,968	62,703

* Number of victims.

TABLE 3.1D: NUMBER OF RECORDED CRIMINAL INCIDENTS FOR MAJOR OFFENCES, NSW SAs, 2015

NSW Statistical Area	Murder *	Domestic violence related assault	Non-domestic violence related assault	Sexual assault	Indecent assault, act of indecency and other sexual offences	Robbery without a weapon	Robbery with a firearm	Robbery with a weapon not a firearm	Break and enter dwelling	Break and enter non-dwelling	Motor vehicle theft	Steal from motor vehicle	Steal from retail store	Steal from dwelling	Steal from person	Fraud	Malicious damage to property
Greater Sydney	40	16,001	17,305	2,450	3,538	1,230	132	646	16,618	5,024	8,397	23,034	13,898	11,471	4,556	39,936	34,103
Capital Region	4	750	740	151	255	7	2	7	728	393	273	964	506	544	27	670	2,059
Central West	3	1,198	1,129	239	264	25	3	17	1,501	663	428	1,404	753	963	79	886	2,788
Coffs Harbour - Grafton	1	697	748	150	182	9	2	22	764	370	273	829	409	564	79	491	1,495
Far West and Orana	8	1,385	984	177	209	23	1	14	1,454	657	399	1,370	506	722	78	614	2,595
Hunter Valley excluding Newcastle	2	1,423	1,013	234	308	33	6	37	1,288	693	694	1,932	735	960	95	1,234	2,755
Illawarra	2	1,033	1,084	214	235	48	4	41	1,302	544	602	1,798	967	906	163	1,264	2,530
Mid North Coast	1	1,050	970	187	318	30	6	27	1,303	528	439	867	556	913	78	810	2,196
Murray	1	489	545	105	168	9	1	6	542	312	217	588	304	452	42	437	1,298
New England and North West	4	1,267	1,180	194	273	28	1	29	1,661	649	388	1,205	716	849	56	772	2,855
Newcastle and Lake Macquarie	5	1,471	1,716	286	388	55	16	65	1,598	766	929	2,998	1,156	1,238	265	2,641	3,750
Richmond - Tweed	1	896	1,225	206	262	40	0	17	934	507	424	1,174	551	753	128	1,105	2,115
Riverina	2	926	808	150	201	14	2	12	1,251	476	441	1,250	591	712	41	590	1,980
Southern Highlands and Shoalhaven	0	512	548	136	197	15	2	13	684	322	220	562	432	418	34	515	1,306
NSW	74	29,106	30,849	4,924	6,821	1,569	178	953	31,628	11,906	14,125	39,975	22,080	21,465	5,722	51,984	64,041

* Number of victims.

TABLE 3.2A: TRENDS[^] IN RECORDED CRIMINAL INCIDENTS FOR MAJOR OFFENCES, GREATER SYDNEY SAs, JANUARY 2015 TO DECEMBER 2016

Greater Sydney Statistical Area	Murder *	Domestic violence related assault	Non-domestic violence related assault	Sexual assault	Indecent assault, act of indecency and other sexual offences	Robbery without a weapon	Robbery with a firearm	Robbery with a weapon not a firearm	Break and enter dwelling	Break and enter non-dwelling	Motor vehicle theft	Steal from motor vehicle	Steal from retail store	Steal from dwelling	Steal from person	Fraud	Malicious damage to property
Baulkham Hills and Hawkesbury	.	ns	ns	ns	ns	.	.	.	ns	ns	ns	ns	ns	ns	ns	ns	ns
Blacktown	.	ns	ns	ns	ns	ns	.	ns	ns	ns	ns	ns	ns	ns	ns	ns	ns
Central Coast	.	21.5	ns	ns	21.6	ns	.	ns	12.6	ns	ns	18.1	ns	ns	-30.2	ns	8.3
City and Inner South	.	ns	ns	ns	ns	-16.3	.	-23.2	-10.2	ns	-14.6	-8.4	ns	-14.7	-17.1	-17.3	ns
Eastern Suburbs	.	ns	ns	ns	ns	ns	.	.	-14.8	ns	ns	-5.3	ns	ns	ns	-12.2	ns
Inner South West	.	ns	ns	ns	ns	ns	.	ns	-24.7	-17.7	-34.2	ns	ns	ns	-18.9	-10.5	ns
Inner West	.	ns	ns	ns	ns	ns	.	ns	ns	ns	-28.5	ns	15.7	ns	-35.2	-6.7	ns
North Sydney and Hornsby	.	ns	ns	ns	ns	ns	.	.	ns	ns	-17.9	ns	ns	-17.4	-20.4	-11.2	ns
Northern Beaches	.	ns	ns	ns	ns	ns	.	.	ns	ns	-26.0	ns	ns	ns	ns	ns	-18.7
Outer South West	.	ns	ns	ns	ns	ns	.	ns	ns	ns	ns	ns	ns	ns	ns	ns	ns
Outer West and Blue Mountains	.	ns	ns	ns	ns	ns	.	ns	-20.6	ns	ns	-10.0	ns	ns	ns	ns	-11.2
Parramatta	.	ns	ns	ns	ns	-33.5	.	ns	-10.2	-16.3	-14.0	ns	ns	ns	ns	-13.0	ns
Ryde	.	ns	ns	ns	ns	.	.	.	ns	ns	ns	ns	ns	ns	ns	-27.0	ns
South West	.	ns	13.6	ns	ns	ns	.	ns	-17.3	ns	-20.2	ns	ns	16.9	-24.0	ns	ns
Sutherland	.	ns	ns	ns	31.1	.	.	.	-17.1	ns	ns	-14.4	ns	ns	ns	ns	ns

[^] For further explanation of **trend results**, see page 44, paragraphs 5 and 6.

TABLE 3.2B: RATIO TO NSW RATE[^] OF RECORDED CRIMINAL INCIDENTS PER 100,000 POPULATION, MAJOR OFFENCES, GREATER SYDNEY SAs, 2016

Greater Sydney Statistical Area	Murder *	Domestic violence related assault	Non-domestic violence related assault	Sexual assault	Indecent assault, act of indecency and other sexual offences	Robbery without a weapon	Robbery with a firearm	Robbery with a weapon not a firearm	Break and enter dwelling	Break and enter non-dwelling	Motor vehicle theft	Steal from motor vehicle	Steal from retail store	Steal from dwelling	Steal from person	Fraud	Malicious damage to property
Baulkham Hills and Hawkesbury	0.5	0.4	0.3	0.4	0.6	0.3	1.0	0.4	0.6	0.5	0.5	0.4	0.4	0.4	0.3	0.6	0.4
Blacktown	0.9	1.6	1.1	1.1	1.0	3.0	2.5	1.5	1.2	0.7	1.3	1.4	1.0	1.0	1.4	1.3	1.2
Central Coast	1.0	1.4	1.1	1.3	1.3	0.6	1.4	0.8	1.1	0.9	1.3	1.2	0.9	0.8	0.7	0.9	1.3
City and Inner South	1.0	1.1	2.8	1.3	1.6	3.9	1.6	2.5	0.9	1.4	1.0	1.3	3.1	1.5	7.4	3.2	1.4
Eastern Suburbs	0.4	0.6	0.9	0.6	0.7	0.7	0.3	1.0	0.7	0.4	0.7	0.7	1.1	1.1	1.2	1.0	0.7
Inner South West	2.2	0.9	0.7	0.5	0.5	1.1	1.0	1.0	0.5	0.4	0.9	0.7	0.5	0.5	0.5	1.0	0.7
Inner West	0.4	0.5	0.6	0.5	0.7	0.8	0.5	0.8	0.9	0.5	0.7	0.9	0.8	1.1	0.9	1.4	0.6
North Sydney and Hornsby	0.3	0.3	0.4	0.5	0.5	0.3	0.1	0.2	0.6	0.6	0.2	0.4	0.8	0.6	0.5	0.7	0.5
Northern Beaches	1.7	0.3	0.5	0.6	0.4	0.5	0.0	0.1	0.5	0.6	0.4	0.6	0.7	0.6	0.6	0.7	0.5
Outer South West	0.8	1.3	0.9	1.2	1.2	1.1	1.6	0.8	1.0	0.8	1.0	0.9	1.1	0.8	0.7	0.9	1.1
Outer West and Blue Mountains	1.4	1.2	1.0	1.2	1.1	1.3	1.3	1.4	0.9	0.9	1.2	0.9	1.1	1.0	1.0	1.1	1.1
Parramatta	0.5	0.9	0.8	0.8	0.8	1.3	2.8	1.3	1.0	0.7	1.0	1.0	0.8	0.9	1.3	1.2	0.7
Ryde	0.6	0.4	0.4	0.4	0.4	0.3	0.0	0.3	0.6	0.3	0.3	0.5	0.6	0.6	0.5	0.9	0.5
South West	2.1	1.1	0.8	0.8	0.9	1.3	1.3	1.6	0.8	0.6	1.2	1.0	0.9	0.8	0.8	1.1	0.8
Sutherland	1.0	0.6	0.6	0.4	0.7	0.3	0.2	0.2	0.4	0.4	0.5	0.5	0.7	0.4	0.4	0.6	0.7

[^] For further explanation of **rate calculation populations** and the **ratio to NSW rate**, see page 44, Note 2 and paragraph 8.

* The rate calculations on the offence of murder is for the number of victims, not incidents.

TABLE 3.2C: NUMBER OF RECORDED CRIMINAL INCIDENTS FOR MAJOR OFFENCES, GREATER SYDNEY SAs, 2016

<i>Greater Sydney Statistical Area</i>	Murder *	Domestic violence related assault	Non-domestic violence related assault	Sexual assault	Indecent assault, act of indecency and other sexual offences	Robbery without a weapon	Robbery with a firearm	Robbery with a weapon not a firearm	Break and enter dwelling	Break and enter non-dwelling	Motor vehicle theft	Steal from motor vehicle	Steal from retail store	Steal from dwelling	Steal from person	Fraud	Malicious damage to property
Baulkham Hills and Hawkesbury	1	313	337	63	121	12	5	9	515	173	191	540	284	293	52	993	719
Blacktown	3	2,058	1,575	239	319	182	18	56	1,566	378	784	2,463	1,086	969	314	2,846	3,421
Central Coast	3	1,751	1,462	292	383	33	10	28	1,398	478	759	2,131	940	784	150	2,030	3,505
City and Inner South	3	1,255	3,656	264	446	216	11	86	1,043	694	531	2,139	2,985	1,345	1,503	6,647	3,623
Eastern Suburbs	1	633	1,025	112	186	34	2	30	743	163	354	1,027	979	841	226	1,839	1,575
Inner South West	12	2,041	1,584	183	280	114	12	65	1,230	394	892	2,247	982	884	206	3,927	3,329
Inner West	1	573	777	102	192	43	3	25	1,000	249	372	1,385	714	880	173	2,660	1,578
North Sydney and Hornsby	1	458	649	129	202	25	1	10	925	395	179	950	983	672	129	2,048	1,619
Northern Beaches	4	305	591	100	106	24	0	3	474	247	174	838	591	453	100	1,229	1,167
Outer South West	2	1,282	956	210	291	51	9	23	983	313	454	1,248	872	582	113	1,636	2,315
Outer West and Blue Mountains	4	1,484	1,290	253	308	75	9	46	1,046	439	664	1,507	1,029	867	196	2,261	2,900
Parramatta	2	1,637	1,580	228	320	107	27	65	1,818	477	765	2,473	1,108	1,094	392	3,715	2,804
Ryde	1	263	330	45	73	11	0	5	437	97	106	535	365	301	63	1,084	683
South West	8	1,687	1,322	223	329	91	11	72	1,318	395	818	2,254	1,134	879	206	2,908	2,509
Sutherland	2	486	599	64	135	12	1	5	350	127	191	611	517	277	65	897	1,300

* Number of victims.

TABLE 3.2D: NUMBER OF RECORDED CRIMINAL INCIDENTS FOR MAJOR OFFENCES, GREATER SYDNEY SAs, 2015

<i>Greater Sydney Statistical Area</i>	Murder *	Domestic violence related assault	Non-domestic violence related assault	Sexual assault	Indecent assault, act of indecency and other sexual offences	Robbery without a weapon	Robbery with a firearm	Robbery with a weapon not a firearm	Break and enter dwelling	Break and enter non-dwelling	Motor vehicle theft	Steal from motor vehicle	Steal from retail store	Steal from dwelling	Steal from person	Fraud	Malicious damage to property
Baulkham Hills and Hawkesbury	1	366	320	90	119	15	2	6	582	174	201	628	272	287	40	939	813
Blacktown	8	1,964	1,537	257	369	194	25	75	1,585	370	798	2,411	1,157	939	302	3,117	3,433
Central Coast	4	1,441	1,389	238	315	47	7	29	1,242	460	667	1,805	1,123	757	215	1,847	3,235
City and Inner South	5	1,310	3,599	240	432	258	12	112	1,162	567	622	2,334	2,562	1,577	1,812	8,034	3,703
Eastern Suburbs	0	669	965	97	148	48	7	19	872	149	403	1,084	861	857	268	2,094	1,648
Inner South West	6	2,086	1,567	195	293	132	19	98	1,634	479	1,356	2,295	895	941	254	4,388	3,184
Inner West	0	604	745	99	166	48	13	35	1,053	277	520	1,427	617	833	267	2,850	1,612
North Sydney and Hornsby	2	445	590	107	190	26	3	12	1,064	346	218	958	931	814	162	2,306	1,751
Northern Beaches	0	346	584	71	132	26	0	7	460	237	235	871	541	450	124	1,332	1,436
Outer South West	1	1,245	953	223	293	42	4	38	1,099	293	507	1,335	835	563	95	1,487	2,226
Outer West and Blue Mountains	3	1,437	1,372	248	314	86	7	49	1,318	385	621	1,675	981	892	197	2,002	3,267
Parramatta	5	1,664	1,677	223	313	161	18	80	2,024	570	890	2,674	1,175	1,121	410	4,272	2,877
Ryde	1	236	308	51	103	12	0	7	507	170	112	436	421	300	67	1,484	752
South West	3	1,737	1,164	231	248	111	15	69	1,594	385	1,025	2,387	1,007	752	271	3,023	2,671
Sutherland	1	451	535	80	103	24	0	10	422	162	222	714	520	388	72	761	1,495

* Number of victims.

**TABLE 3.3A: TRENDS^a IN RECORDED CRIMINAL INCIDENTS FOR MAJOR OFFENCES,
NSW LGAs, JANUARY 2015 TO DECEMBER 2016**

NSW LGA	Murder *	Domestic violence related assault	Non-domestic violence related assault	Sexual assault	Indecent assault, act of indecency and other sexual offences	Robbery without a weapon	Robbery with a firearm	Robbery with a weapon not a firearm	Break and enter dwelling	Break and enter non-dwelling	Motor vehicle theft	Steal from motor vehicle	Steal from retail store	Steal from dwelling	Steal from person	Fraud	Malicious damage to property
Albury	.	ns	ns	ns	ns	.	.	.	ns	ns	ns	52.8	ns	18.8	ns	ns	-8.7
Armidale Dumaresq	.	ns	ns	ns	ns	.	.	.	ns	69.1	ns	89.7	ns	ns	.	109.6	41.4
Ashfield	.	ns	-24.8	.	ns	.	.	.	ns	ns	-47.6	ns	64.5	ns	ns	ns	ns
Auburn	.	ns	ns	ns	ns	.	.	.	ns	ns	ns	ns	ns	ns	ns	ns	ns
Ballina	.	ns	ns	ns	ns	.	.	.	ns	ns	ns	ns	ns	ns	ns	ns	ns
Bairnald
Bankstown	.	ns	ns	ns	ns	ns	.	ns	-35.1	-33.8	-27.0	ns	ns	ns	ns	ns	6.6
Bathurst Regional	.	ns	ns	-41.1	ns	.	.	.	ns	ns	ns	ns	ns	ns	ns	ns	ns
Bega Valley	.	ns	ns	ns	ns	.	.	.	ns	ns	ns	96.4	ns	ns	.	ns	ns
Bellingen	.	ns	ns	ns	ns	ns	ns	ns	ns	.	ns	ns
Berrigan	ns
Blacktown	.	ns	ns	ns	ns	ns	.	ns	ns	ns	ns	ns	ns	ns	ns	ns	ns
Bland	ns
Blayney	ns	ns
Blue Mountains	.	ns	ns	ns	ns	.	.	.	ns	ns	ns	ns	ns	ns	ns	ns	-30.2
Bogan	.	ns	ns	-51.3
Bombala
Boorowa
Botany Bay	.	ns	ns	.	ns	.	.	.	ns	ns	ns	ns	ns	ns	ns	ns	ns
Bourke	.	ns	-41.0	ns	ns	ns	ns	ns	ns	.	ns	ns
Brewarrina	.	ns	ns	ns	ns	ns
Broken Hill	.	ns	ns	ns	ns	.	.	.	ns	ns	77.4	ns	90.6	42.7	.	ns	ns
Burwood	.	ns	ns	.	ns	.	.	.	ns	ns	-61.0	ns	ns	ns	ns	-17.8	ns
Byron	.	ns	ns	ns	ns	.	.	.	ns	ns	ns	41.1	ns	ns	ns	ns	ns
Cabonne	.	ns	ns	ns	ns	ns	ns	ns	ns	.	ns	ns
Camden	.	ns	ns	ns	ns	.	.	.	ns	ns	ns	ns	ns	ns	.	37.5	28.0
Campbelltown	.	ns	ns	ns	ns	ns	.	ns	ns	ns	ns	ns	ns	ns	ns	ns	ns
Canada Bay	.	ns	ns	ns	ns	.	.	.	ns	ns	ns	ns	ns	ns	ns	ns	ns
Canterbury	.	ns	ns	ns	ns	ns	.	ns	-21.1	ns	-35.2	ns	ns	ns	-23.9	-25.4	ns
Carrathool
Central Darling	.	ns	ns	168.0	ns	ns
Cessnock	.	ns	ns	ns	ns	.	.	.	ns	ns	ns	ns	ns	ns	.	ns	ns
Clarence Valley	.	ns	ns	ns	ns	.	.	.	ns	-24.2	ns	ns	ns	ns	.	45.9	ns
Cobar	.	ns	ns	ns	ns	ns	ns	ns	ns	.	ns	ns
Coffs Harbour	.	ns	ns	ns	ns	.	.	.	ns	ns	ns	-25.9	ns	ns	ns	ns	ns
Conargo
Coolamon	ns
Cooma-Monaro	.	ns	ns	ns	ns
Coonamble	.	ns	ns	ns	ns	.	ns	ns	ns	.	ns	ns
Cootamundra	.	ns	ns	ns	.	.	ns
Corowa Shire	.	ns	ns	ns	ns	ns	ns	ns	ns	.	ns	ns
Cowra	.	ns	ns	32.8	ns	ns	ns	ns	ns	.	ns	-28.6
Deniliquin	.	ns	ns	ns	ns	.	ns	ns	ns	.	ns	ns
Dubbo	.	ns	20.1	ns	ns	.	.	.	28.9	ns	ns	ns	ns	ns	ns	ns	ns
Dungog	.	ns	ns	ns
Eurobodalla	.	ns	ns	.	ns	.	.	.	ns	ns	49.0	ns	ns	ns	.	ns	ns
Fairfield	.	ns	ns	-13.1	ns	ns	.	ns	-27.7	ns	-5.5	ns	ns	ns	ns	ns	ns
Forbes	.	ns	24.5	ns	ns	.	ns	.	ns	.	ns	ns
Gilgandra	.	ns	ns	ns	.	ns	ns
Glen Innes Severn	.	ns	ns	95.8	ns	.	167.6	.	59.5	.	ns	ns
Gloucester	ns
Gosford	.	ns	ns	ns	ns	.	.	.	ns	ns	26.7	28.1	ns	ns	-35.2	23.0	ns
Goulburn Mulwaree	.	ns	ns	ns	ns	.	.	.	ns	ns	ns	ns	ns	ns	.	ns	-18.9
Great Lakes	.	ns	ns	ns	ns	.	.	.	ns	59.6	ns	ns	ns	ns	.	ns	ns
Greater Hume Shire	ns
Greater Taree	.	ns	ns	ns	ns	.	.	.	ns	ns	ns	ns	-48.2	ns	.	ns	ns
Griffith	.	ns	ns	.	ns	.	.	.	ns	-34.6	ns	ns	ns	ns	.	ns	ns
Gundagai	ns
Gunnedah	.	ns	ns	-47.2	ns	.	-57.1	-44.7	ns	.	ns	ns
Guvera	.	-45.0	ns	ns	.	.	ns
Gwydir	ns
Harden	ns
Hawkesbury	.	ns	ns	ns	ns	.	.	.	ns	ns	ns	ns	ns	ns	ns	ns	ns
Hay	.	.	ns	ns
Holroyd	.	ns	ns	ns	ns	ns	.	.	ns	ns	-20.6	-21.7	ns	ns	ns	-28.2	ns
Hornsby	.	ns	ns	ns	ns	.	.	.	-17.8	ns	-14.0	-13.2	-21.5	ns	ns	ns	ns
Hunters Hill	.	.	ns	ns	ns	ns	ns	ns	ns	.	ns	ns
Hurstville	.	ns	ns	.	ns	.	.	.	-29.6	ns	-51.8	ns	51.2	ns	ns	-8.8	21.3
Inverell	.	ns	ns	.	ns	.	.	.	67.0	ns	.	ns	ns	ns	.	ns	ns
Jerilderie
Junee	.	ns	ns	ns
Kempsey	.	ns	ns	ns	ns	.	.	.	ns	ns	ns	ns	ns	ns	.	ns	ns
Kiama	.	ns	ns	-48.3	ns	ns	ns	.	ns	.	ns	ns
Kogarah	.	-11.5	ns	.	ns	.	.	.	-31.1	ns	-37.3	ns	ns	-31.5	.	ns	ns
Ku-ring-gai	.	ns	ns	77.3	ns	.	.	.	ns	ns	ns	ns	ns	ns	.	ns	ns
Kyogle	.	ns	ns	ns	ns	.	ns	.	ns	.	.	ns
Lachlan	.	ns	ns	ns	ns	.	ns	.	ns	.	.	ns
Lake Macquarie	.	ns	ns	ns	ns	.	.	.	ns	ns	ns	ns	40.9	10.0	ns	ns	ns
Lane Cove	.	ns	ns	ns	ns	.	ns	.	ns	.	ns	ns
Leeton	.	ns	ns	ns	ns	ns	ns	.	ns	.	ns	ns

TABLE 3.3A: TRENDS[^] IN RECORDED CRIMINAL INCIDENTS FOR MAJOR OFFENCES, NSW LGAs, JANUARY 2015 TO DECEMBER 2016

NSW LGA	Murder *	Domestic violence related assault	Non-domestic violence related assault	Sexual assault	Indecent assault, act of indecency and other sexual offences	Robbery without a weapon	Robbery with a firearm	Robbery with a weapon not a firearm	Break and enter dwelling	Break and enter non-dwelling	Motor vehicle theft	Steal from motor vehicle	Steal from retail store	Steal from dwelling	Steal from person	Fraud	Malicious damage to property
Leichhardt	.	ns	ns	ns	ns	ns	ns	ns	ns	ns	ns	ns	ns
Lismore	.	ns	ns	ns	ns	.	.	.	-11.9	ns	ns	ns	ns	-24.2	ns	ns	ns
Lithgow	.	ns	ns	ns	ns	ns	ns	ns	ns	ns	ns	ns
Liverpool	.	ns	11.5	ns	ns	ns	.	.	-10.3	ns	-30.1	ns	ns	23.6	ns	ns	ns
Liverpool Plains	.	ns	ns	ns	ns	.	.	73.5
Lockhart
Lord Howe Island
Maitland	.	ns	ns	ns	ns	.	.	.	ns	ns	ns	ns	53.4	46.8	ns	ns	ns
Manly	.	-49.3	ns	.	ns	.	.	.	ns	ns	ns	ns	ns	ns	ns	ns	ns
Marrickville	.	-19.8	-12.4	ns	ns	ns	.	.	-34.4	ns	-31.2	ns	-22.3	-24.3	-47.1	ns	ns
Mid-Western Regional	.	ns	ns	ns	ns	ns	.	.	ns	ns	ns	ns	ns	ns	ns	ns	ns
Moree Plains	.	ns	ns	ns	ns	.	.	.	ns	ns	ns	ns	ns	ns	ns	ns	ns
Mosman	.	ns	ns	ns	ns	.	ns	.	ns	.	-50.3	ns
Murray	ns	ns	.	ns	ns
Murrumbidgee	ns
Muswellbrook	.	ns	ns	.	ns	.	.	.	ns	ns	ns	ns	ns	ns	.	ns	ns
Nambucca	.	ns	68.2	.	ns	.	.	.	-56.6	ns	ns	ns	ns	ns	.	ns	ns
Narrabri	.	ns	ns	ns	ns	ns	ns	ns	ns	.	ns	ns
Narrandera	.	ns	ns	ns	.	ns	ns	ns	.	.	ns
Narromine	.	ns	ns	ns	ns	ns	ns	.	ns	.	ns	ns
Newcastle	.	ns	ns	ns	9.8	ns	.	.	ns	-27.9	ns	9.2	ns	ns	ns	ns	16.9
North Sydney	.	ns	ns	.	ns	.	.	.	ns	ns	ns	ns	45.0	ns	ns	ns	ns
Oberon	ns
Orange	.	ns	ns	ns	ns	.	.	.	ns	ns	ns	ns	ns	ns	.	50.5	ns
Palerang	ns	.	.	-38.2	.	ns	.	.	ns
Parkes	.	ns	ns	ns	ns	ns	ns	ns	.	ns	.	-39.0	38.1
Parramatta	.	ns	ns	ns	ns	-31.0	.	.	ns	ns	ns	ns	ns	ns	.	-8.6	ns
Penrith	.	ns	ns	ns	ns	ns	.	.	ns	ns	ns	-17.2	ns	ns	ns	ns	ns
Pittwater	.	-18.7	ns	ns	ns	-38.2	ns	ns	ns	.	ns	-19.5
Port Macquarie-Hastings	.	ns	ns	ns	ns	ns	.	.	ns	ns	ns	ns	80.9	ns	ns	ns	-10.2
Port Stephens	.	ns	ns	ns	ns	.	.	.	ns	ns	ns	ns	ns	ns	.	ns	ns
Queanbeyan	.	ns	ns	-25.0	ns	ns	ns	ns	ns	.	ns	ns
Randwick	.	ns	ns	ns	38.4	ns	.	.	ns	ns	ns	-10.7	ns	ns	ns	ns	ns
Richmond Valley	.	ns	ns	ns	ns	.	.	.	ns	-43.9	ns	ns	ns	ns	.	ns	ns
Rockdale	.	ns	ns	ns	ns	ns	.	.	ns	ns	-36.9	-21.4	ns	-18.4	ns	-14.4	ns
Ryde	.	ns	ns	ns	ns	.	.	.	ns	-56.3	ns	ns	ns	ns	ns	-34.7	ns
Shellharbour	.	ns	ns	ns	ns	.	.	.	ns	ns	ns	28.6	-27.3	ns	.	ns	ns
Shoalhaven	.	ns	ns	ns	ns	.	.	.	-20.9	-34.1	ns	ns	ns	ns	.	ns	ns
Singleton	.	ns	ns	-24.3	ns	ns	-33.7	ns	ns	.	ns	ns
Snowy River	ns
Strathfield	.	ns	5.8	.	65.2	.	.	.	ns	ns	ns	ns	ns	ns	ns	ns	ns
Sutherland Shire	.	ns	ns	ns	31.1	.	.	.	-17.3	ns	ns	-14.4	ns	ns	ns	ns	ns
Sydney	.	ns	ns	ns	ns	-17.4	.	.	-6.1	ns	ns	ns	19.3	-15.1	-15.8	-14.9	ns
Tamworth Regional	.	ns	ns	ns	ns	.	.	.	ns	ns	ns	ns	ns	32.4	.	48.4	ns
Temora	ns
Tenterfield	.	ns	ns	ns	.	.	ns	.	ns	.	.	ns
The Hills Shire	.	ns	ns	ns	ns	.	.	.	-18.9	ns	-23.4	ns	ns	ns	ns	ns	ns
Tumbarumba	ns
Turnut Shire	.	ns	ns	240.9	ns	ns	ns	.	119.4	.	.	ns
Tweed	.	ns	ns	ns	ns	.	.	.	ns	ns	-19.8	ns	ns	ns	ns	23.2	ns
Unincorporated Far West	ns
Upper Hunter Shire	.	ns	ns	ns	ns	ns	ns	.	ns	.	ns	ns
Upper Lachlan Shire	ns
Uralla	ns
Urana	ns
Wagga Wagga	.	21.4	ns	ns	ns	.	.	.	ns	-50.0	-45.8	ns	ns	ns	ns	ns	ns
Wakool	ns
Walcha	ns
Walgett	.	ns	ns	-53.7	ns	.	ns	ns	ns	.	ns	ns
Warren	.	ns	ns	ns	.	.	ns	ns
Warringham	.	ns	ns	ns	ns	.	.	.	ns	ns	-30.9	ns	ns	ns	-23.2	ns	ns
Warrumbungle Shire	.	ns	ns	ns	ns	.	ns	.	ns	.	50.0	ns
Waverley	.	ns	13.3	ns	ns	.	.	.	ns	ns	ns	ns	ns	ns	ns	-23.2	ns
Weddin	ns
Wellington	.	ns	ns	80.9	ns	ns	ns	ns	ns	.	ns	ns
Wentworth	.	ns	ns	ns	ns	.	ns	.	ns	.	.	ns
Willoughby	.	ns	ns	ns	ns	.	.	.	ns	ns	ns	ns	18.8	-32.6	ns	ns	-25.3
Wingecarribee	.	ns	ns	.	ns	.	.	.	ns	ns	ns	ns	ns	ns	.	ns	ns
Wollondilly	.	ns	ns	ns	ns	.	.	.	ns	44.4	ns	ns	.	ns	.	ns	ns
Wollongong	.	ns	ns	ns	ns	ns	.	.	-14.7	ns	ns	ns	22.0	-16.7	-31.8	ns	ns
Woollahra	.	ns	ns	.	ns	.	.	.	ns	ns	ns	ns	ns	ns	ns	ns	ns
Wyong	.	23.2	ns	ns	ns	.	.	.	25.3	ns	ns	ns	ns	ns	-23.3	ns	ns
Yass Valley	.	ns	ns	-54.9	.	.	ns	.	ns	.	ns	ns
Young	.	ns	ns	.	ns	.	.	.	ns	.	.	ns	ns	ns	.	ns	ns
NSW	ns	ns	ns	ns	ns	-13.3	ns	-13.9	-6.2	ns	-7.3	ns	6.1	ns	-13.3	-3.9	ns

[^] For further explanation of **trend results**, see page 44, paragraphs 5 and 6.

* There were no LGAs with 20 murder victims in 2015 and 2016, hence the only trend test reported above was for NSW. Any trend test for the offence of **murder** is for the number of victims, not incidents.

TABLE 3.3B: RATIO TO NSW RATE* OF RECORDED CRIMINAL INCIDENTS PER 100,000 POPULATION, MAJOR OFFENCES, NSW LGAs, 2016

NSW LGA	Murder*	Domestic violence related assault	Non-domestic violence related assault	Sexual assault	Indecent assault, act of indecency and other sexual offences	Robbery without a weapon	Robbery with a firearm	Robbery with a weapon not a firearm	Break and enter dwelling	Break and enter non-dwelling	Motor vehicle theft	Steal from motor vehicle	Steal from retail store	Steal from dwelling	Steal from person	Fraud	Malicious damage to property
Albury	n.c	1.4	1.4	1.3	1.4	1.3	2.7	1.1	1.9	1.8	1.2	2.0	1.9	1.7	0.8	0.8	1.6
Armidale Dumaresq	n.c	1.3	1.7	2.0	1.0	0.9		1.1	2.8	4.1	1.4	3.7	2.0	1.9	1.1	1.5	2.9
Ashfield	n.c	0.5	0.6	0.5	1.0	0.3		1.0	0.7	0.3	0.6	0.8	1.5	1.1	0.8	1.2	0.6
Aburn	n.c	0.8	0.9	0.6	0.7	1.1	4.8	1.3	1.0	0.7	0.8	0.8	0.4	0.7	1.8	1.2	0.6
Ballina	n.c	0.7	0.8	1.0	1.0	0.5			0.8	1.4	0.6	1.0	0.9	1.1	0.5	0.8	1.0
Bairnald	n.c																
Bankstown	n.c	1.1	0.8	0.6	0.6	0.9	0.7	1.3	0.5	0.5	1.3	1.0	0.6	0.5	0.5	1.3	0.8
Bathurst Regional	n.c	1.1	1.1	1.2	1.3	1.1		1.3	2.0	2.0	1.4	1.5	1.5	1.2	0.7	1.0	1.4
Bega Valley	n.c	0.8	0.8	1.2	0.9			0.3	0.6	1.5	0.5	0.9	0.6	0.9	0.4	0.5	1.0
Bellingen	n.c	0.7	0.6	0.8	0.7			0.7	0.4	2.1	0.5	0.6	0.2	0.6		0.4	0.7
Berrigan	n.c	0.5	0.3	0.2	0.8				0.5	1.4	0.3	0.3	0.0	1.5		0.3	0.9
Blacktown	n.c	1.6	1.1	1.1	1.0	3.0	2.5	1.5	1.2	0.7	1.3	1.3	1.0	1.0	1.4	1.3	1.2
Bland	n.c	0.9	0.8	0.8	1.9				0.3	0.9	1.1	0.6	0.4	0.3		0.4	0.9
Blayney	n.c	0.5	0.5	1.6	0.9	0.8			1.6	2.0	1.2	0.8	1.1	0.9		0.4	0.8
Blue Mountains	n.c	0.8	0.6	1.2	0.8	0.8	1.8	0.6	0.5	0.7	0.5	0.5	0.4	0.7	0.4	0.6	0.9
Bogan	n.c	2.3	0.9	0.5	1.1				2.0	2.3	2.7	1.2	0.5	1.4		0.4	1.5
Bombala	n.c																
Boorowa	n.c																
Botany Bay	n.c	0.8	0.8	0.7	0.9	0.8		0.8	0.6	0.6	1.1	0.7	1.7	0.9	1.4	1.6	0.9
Bourke	n.c																
Brewarrina	n.c																
Broken Hill	n.c	2.2	1.7	2.5	1.7	0.6			2.0	1.9	1.7	1.7	1.1	2.6	0.8	0.6	1.8
Burwood	n.c	0.5	0.9	0.3	1.0	1.2	1.3		1.1	0.6	0.5	0.9	2.4	1.0	1.7	2.3	0.7
Byron	n.c	0.8	1.7	1.1	1.2	0.3		0.6	1.2	1.7	1.2	1.7	1.1	1.5	2.6	1.2	1.2
Cabonne	n.c	0.5	0.5	0.5	1.3	0.4			0.7	1.0	0.9	0.3	0.1	0.6		0.2	0.6
Camden	n.c	0.8	0.6	0.6	0.9	0.2	0.6	0.4	0.6	0.7	0.8	0.5	0.6	0.7	0.2	0.9	0.7
Campbelltown	n.c	1.5	1.1	1.4	1.4	1.6	2.1	1.2	1.2	0.9	1.2	1.2	1.5	0.9	1.0	1.1	1.3
Canada Bay	n.c	0.3	0.4	0.3	0.5	0.6	0.5	0.5	0.7	0.5	0.6	0.8	0.3	0.9	0.6	1.2	0.4
Canterbury	n.c	0.8	0.6	0.6	0.5	1.4	1.5	1.3	0.5	0.4	0.9	0.7	0.4	0.5	0.5	1.0	0.6
Carrathool	n.c																
Central Darling	n.c																
Cessnock	n.c	1.7	1.2	1.5	1.3	1.0	3.3	1.7	1.9	2.5	3.1	1.8	1.0	1.9	0.6	0.9	1.2
Clarence Valley	n.c	1.1	1.4	1.6	1.1	0.1		1.6	1.6	1.5	1.3	1.1	0.8	1.7	0.4	0.7	1.4
Cobar	n.c	2.2	1.6	0.6	1.1	2.3			2.5	2.8	2.6	1.3	1.0	1.7	0.3	0.8	2.3
Coffs Harbour	n.c	1.8	1.3	1.9	1.7	0.8	0.6	1.3	1.1	2.0	1.1	1.0	1.2	1.2	1.1	0.8	1.3
Conargo	n.c																
Coolamon	n.c	0.7	0.6	0.3	2.6				0.7	0.9	0.8	0.2	0.4	1.2		0.2	1.0
Cooma-Monaro	n.c	0.8	1.2	1.6	2.2				0.4	0.8	0.6	0.6	0.3	0.6		0.3	1.0
Coonamble	n.c	3.0	2.7	0.7	3.1			2.2	6.6	6.1	2.0	2.9	2.4	3.5	0.4	0.8	3.3
Cootamundra	n.c	1.0	0.9	1.2	1.0				0.7	0.8	0.5	0.3	0.3	1.4		0.3	1.4
Corowa Shire	n.c	0.6	0.7	0.8	0.8	0.5		0.8	1.0	1.7	0.9	0.7	0.3	1.7	0.1	0.5	0.8
Cowra	n.c	1.5	1.7	1.4	1.7	0.9	3.7	0.7	3.3	2.0	1.5	1.2	0.8	1.9	0.2	0.6	1.9
Deniliquin	n.c	2.0	0.8	2.2	1.2				1.1	2.4	0.9	0.9	0.6	1.6	0.2	0.5	1.4
Dubbo	n.c	1.9	1.7	1.6	2.0	1.1	3.3	2.7	4.0	3.1	3.5	3.9	2.8	2.3	1.6	1.1	2.1
Dungog	n.c	0.7	0.8	1.1	1.1				0.8	1.6	0.9	0.4	0.1	0.6	0.2	0.3	0.7
Eurobodalla	n.c	1.0	1.1	0.6	1.2	0.3	1.2		1.4	1.2	1.1	1.1	1.2	1.0	0.4	0.5	1.1
Fairfield	n.c	0.9	0.8	0.6	0.6	1.5	2.1	2.0	0.6	0.6	1.2	0.9	0.5	0.5	0.7	0.9	0.7
Forbes	n.c	2.2	1.6	2.2	1.3				2.6	3.7	1.1	1.4	0.3	1.9	0.8	0.7	1.9
Gilgandra	n.c	2.0	1.3	1.4	2.8	1.3		4.2	2.2	1.5	0.5	0.6	0.5	1.8		0.7	1.6
Glen Innes Severn	n.c	3.1	1.9	1.8	2.1	0.6		3.1	2.7	3.2	1.3	1.9	1.2	2.3	0.2	0.6	2.0
Gloucester	n.c	0.9	1.2	1.5	2.4			1.8	0.7	1.4	0.3	0.3	0.5	1.7	0.3	0.4	1.2
Gosford	n.c	1.1	1.0	1.2	1.1	0.5	1.1	0.9	1.0	0.9	1.1	1.2	0.9	0.8	0.7	0.8	1.1
Goulburn Mulwaree	n.c	0.9	1.0	1.6	1.4	0.6			0.7	1.0	0.6	1.0	0.9	0.9	0.2	0.8	1.1
Great Lakes	n.c	1.4	1.1	1.4	1.3	0.3		0.5	1.4	1.5	0.7	0.5	0.6	1.4	0.3	0.5	1.2
Greater Hume Shire	n.c	0.5	0.3	2.3	1.0	0.5			0.6	1.3	0.7	0.6	0.3	0.7		0.4	0.6
Greater Taree	n.c	1.3	1.0	2.1	2.0	0.2		0.9	1.5	3.7	1.2	0.7	0.7	1.5	0.5	0.7	1.4
Griffith	n.c	2.4	1.6	1.0	1.3	2.2		3.6	1.8	2.1	1.2	1.4	1.9	1.3	0.1	0.6	1.5
Gundagai	n.c	1.3	0.5	1.2	0.9				0.8	0.7	0.6	0.9	0.2	0.9		3.9	0.9
Gunnedah	n.c	1.6	1.3	1.8	1.8				1.3	1.9	0.8	0.6	0.7	1.4	0.4	0.6	1.8
Guyra	n.c	1.3	1.1	2.0	1.0				0.8	1.1	0.5	0.5	0.6	1.6		0.4	1.8
Gwydir	n.c	0.7	0.8	0.6	1.5				0.6	1.2	0.6	0.6	0.3	1.4		0.3	1.0
Harden	n.c	1.1	0.8	2.0	1.5				0.6	0.7	0.5	0.6		0.8		0.2	0.9
Hawkesbury	n.c	1.0	0.9	0.9	1.0	0.4	1.4	1.3	0.7	0.9	1.2	1.1	0.8	1.0	0.7	0.8	0.9
Hay	n.c																
Holroyd	n.c	1.0	0.7	0.7	0.8	1.4	2.1	1.1	1.1	0.7	1.0	0.9	0.6	0.8	0.7	1.0	0.7
Hornsby	n.c	0.3	0.4	0.4	0.5	0.2		0.2	0.5	0.4	0.3	0.4	0.5	0.5	0.4	0.6	0.5
Hunters Hill	n.c	0.3	0.4	0.4	0.5	0.8		0.6	0.7	0.5	0.6	0.5	0.1	0.5	0.7	0.4	0.4
Hurstville	n.c	0.8	0.6	0.3	0.5	0.9	1.6	0.6	0.6	0.6	0.6	0.5	1.2	0.5	1.0	0.8	0.7
Inverell	n.c	1.6	1.7	1.6	2.0	0.3			2.5	1.3	0.4	0.9	1.1	1.8	0.4	0.7	1.6
Jerilderie	n.c																
Juneee	n.c	1.7	1.6	2.2	2.0			1.5	0.9	1.2	0.7	0.4	0.3	1.1		0.4	1.3
Kempsey	n.c	2.0	1.3	1.7	1.4	0.6		2.2	2.7	1.9	1.6	1.3	1.2	2.2	0.5	0.7	1.8
Kiama	n.c	0.3	0.7	0.5	0.5	0.5		0.4	0.4	1.2	0.7	0.9	0.2	0.5	0.8	0.4	0.6
Kogarah	n.c	0.7	0.6	0.3	0.6	0.6	0.8	0.6	0.5	0.3	0.4	0.4	0.2	0.4	0.4	0.8	0.7
Ku-ring-gai	n.c	0.2	0.1	0.5	0.4	0.2		0.1	0.7	0.4	0.2	0.4	0.1	0.4	0.2	0.6	0.3
Kyogle	n.c	1.2	0.9	0.9	2.1				0.9	2.0	1.1	0.4	0.2	1.0		0.6	1.1
Lachlan	n.c	2.1	1.9	2.7	1.6				1.6	2.0	0.9	1.3	0.5	2.1	0.2	0.5	1.8
Lake Macquarie	n.c	0.9	0.8	1.1	1.1	0.9	0.5	0.8	0.9	1.1	1.5	1.1	1.1	1.0	0.6	1.0	1.1
Lane Cove	n.c	0.3	0.3	0.3	0.2			0.3	0.5	0.7	0.3	0.4	0.2	0.5	0.1	0.6	0.3
Leeton	n.c	1.3	1.3	1.3	0.9	1.0		0.8	2.0	2.6	1.1	0.8	0.7	1.2	0.1	0.4	1.3

TABLE 3.3B: RATIO TO NSW RATE* OF RECORDED CRIMINAL INCIDENTS PER 100,000 POPULATION, MAJOR OFFENCES, NSW LGAs, 2016

NSW LGA	Murder*	Domestic violence related assault	Non-domestic violence related assault	Sexual assault	Indecent assault, act of indecency and other sexual offences	Robbery without a weapon	Robbery with a firearm	Robbery with a weapon not a firearm	Break and enter dwelling	Break and enter non-dwelling	Motor vehicle theft	Steal from motor vehicle	Steal from retail store	Steal from dwelling	Steal from person	Fraud	Malicious damage to property
Leichhardt	n.c	0.6	0.7	0.5	0.3	0.9	.	1.1	0.8	0.7	0.8	0.9	0.5	1.2	0.7	1.2	0.9
Lismore	n.c	1.0	1.5	2.3	2.6	0.6	.	1.5	1.2	1.1	1.3	1.0	1.2	1.1	0.9	0.8	1.3
Lithgow	n.c	1.0	1.4	1.1	1.0	1.0	.	1.3	1.5	2.8	1.4	0.8	0.7	1.6	0.5	1.1	1.8
Liverpool	n.c	1.3	0.8	1.1	1.2	1.1	0.7	1.2	1.0	0.6	1.2	1.2	1.4	0.9	0.9	1.3	0.8
Liverpool Plains	n.c	2.3	1.3	0.6	1.6	.	.	.	1.1	3.5	1.0	0.4	0.7	1.5	.	0.6	1.3
Lockhart	n.c	0.6	0.3	1.0	0.7	.	.	.	1.1	2.6	0.2	0.2	0.1	1.2	.	0.2	0.9
Lord Howe Island	n.c
Maitland	n.c	1.7	1.0	1.2	1.2	0.7	1.2	1.5	1.4	1.4	1.7	2.1	1.2	1.8	0.7	0.7	1.3
Manly	n.c	0.2	1.1	0.7	0.6	0.5	.	.	0.6	0.6	0.5	0.7	0.9	0.9	1.4	0.8	0.7
Marrickville	n.c	0.6	1.0	1.0	1.1	1.4	1.7	2.5	0.6	0.6	1.0	1.0	0.5	1.1	0.8	1.4	1.1
Mid-Western Regional	n.c	1.3	1.3	1.6	1.5	.	1.9	.	0.9	1.1	0.6	0.7	0.5	1.5	0.2	0.5	1.2
Moree Plains	n.c	4.7	2.9	2.8	3.1	3.2	.	4.0	5.1	6.3	3.4	2.5	3.1	3.6	0.8	1.0	4.6
Mosman	n.c	0.3	0.3	0.2	0.8	0.2	.	0.3	0.4	0.5	0.2	0.4	0.2	0.7	0.5	0.4	0.5
Murray	n.c	0.7	0.7	1.2	0.8	0.7	.	.	1.5	4.7	1.5	1.4	0.4	1.5	0.4	0.7	0.9
Murrumbidgee	n.c
Muswellbrook	n.c	1.4	1.3	2.0	1.6	.	.	1.1	2.3	2.6	2.0	1.4	1.5	1.7	0.8	0.6	1.8
Nambucca	n.c	1.3	1.8	2.8	2.3	0.3	.	0.9	1.2	1.8	1.4	1.0	0.9	1.4	0.7	0.5	1.4
Narrabri	n.c	1.9	1.5	1.2	1.0	0.4	3.4	0.7	2.0	2.0	1.4	1.1	0.9	1.8	0.4	0.5	2.0
Narrandera	n.c	1.2	1.3	1.5	1.7	0.9	7.9	.	2.1	4.5	1.4	1.0	1.9	1.6	0.3	0.3	1.3
Narromine	n.c	1.8	1.8	2.0	1.5	2.5	.	.	3.7	4.8	3.0	2.1	0.8	3.5	2.5	0.6	1.9
Newcastle	n.c	1.2	1.7	1.4	1.3	1.9	2.6	1.7	1.5	1.2	1.7	2.2	1.5	1.6	1.7	1.4	1.6
North Sydney	n.c	0.5	0.6	0.4	0.6	0.8	.	0.4	0.5	1.0	0.3	0.4	0.6	0.9	0.6	1.0	0.6
Oberon	n.c	0.7	0.7	1.4	1.3	.	.	1.7	1.0	0.9	1.1	0.6	0.4	0.9	.	0.3	1.0
Orange	n.c	1.6	1.5	2.1	1.8	0.7	4.5	3.3	2.5	2.2	2.0	1.8	2.3	1.7	1.0	1.2	1.6
Palerang	n.c	0.1	0.3	0.8	0.4	.	.	.	0.4	0.4	0.5	0.2	0.0	0.8	0.1	0.2	0.5
Parkes	n.c	2.0	1.8	2.5	2.0	1.1	.	.	1.3	2.8	1.2	1.5	1.2	2.1	0.3	0.6	2.4
Parramatta	n.c	1.0	1.0	0.8	0.9	1.7	2.6	1.8	1.1	0.7	1.0	1.1	1.2	1.0	1.7	1.6	0.8
Penrith	n.c	1.4	1.1	1.2	1.2	1.7	0.9	1.5	1.0	0.9	1.5	0.9	1.3	1.0	1.2	1.3	1.2
Pittwater	n.c	0.3	0.5	0.3	0.3	0.3	.	0.1	0.3	0.6	0.4	0.7	0.4	0.5	0.4	0.7	0.5
Port Macquarie-Hastings	n.c	0.8	1.0	1.3	1.2	0.2	.	1.1	0.6	0.8	0.8	0.7	0.8	1.0	0.5	0.6	0.8
Port Stephens	n.c	1.3	1.0	1.6	1.1	0.2	.	1.4	1.4	1.2	1.1	1.1	0.8	1.3	0.3	0.8	1.4
Queanbeyan	n.c	1.0	0.9	0.8	0.6	0.3	1.1	0.5	0.9	1.1	1.6	1.5	1.5	0.8	0.3	0.6	1.3
Randwick	n.c	0.7	0.8	0.6	0.8	0.8	.	1.8	0.7	0.4	0.8	0.7	0.5	1.1	0.9	1.0	0.6
Richmond Valley	n.c	1.5	1.4	1.9	1.9	0.5	.	1.6	1.7	1.7	1.4	1.3	0.6	1.3	0.3	0.7	2.1
Rockdale	n.c	0.9	0.6	0.4	0.5	1.4	0.4	0.8	0.6	0.4	0.7	0.6	0.3	0.7	1.0	0.9	0.7
Ryde	n.c	0.5	0.5	0.4	0.5	0.2	.	0.2	0.6	0.3	0.4	0.6	0.9	0.6	0.7	1.0	0.5
Shellharbour	n.c	0.9	0.8	1.1	1.1	0.7	1.3	0.9	0.8	1.1	1.2	1.3	0.9	0.9	0.4	0.6	0.9
Shoalhaven	n.c	1.0	1.0	1.4	1.4	0.4	0.5	0.8	1.2	1.1	0.9	0.9	1.0	0.9	0.2	0.7	1.1
Singleton	n.c	0.9	0.7	1.1	0.8	0.2	.	0.4	1.1	1.9	1.7	0.9	0.9	1.3	0.6	0.4	0.9
Snowy River	n.c	0.4	0.6	1.1	0.7	.	.	.	0.4	0.2	0.1	0.3	0.4	0.4	0.4	0.4	0.6
Strathfield	n.c	0.7	0.9	0.8	1.1	1.7	.	0.5	1.3	0.8	1.3	1.1	0.4	1.4	1.9	1.7	0.8
Sutherland Shire	n.c	0.6	0.6	0.4	0.7	0.3	0.2	0.2	0.4	0.4	0.5	0.5	0.7	0.4	0.4	0.6	0.7
Sydney	n.c	1.2	3.8	1.5	1.9	5.2	2.0	2.9	1.0	1.9	0.9	1.5	4.2	1.8	10.5	4.1	1.6
Tamworth Regional	n.c	1.4	1.3	1.8	1.6	0.8	.	1.2	2.1	1.2	1.0	1.3	1.4	1.9	0.5	0.8	1.6
Temora	n.c	0.6	1.0	1.2	1.3	.	.	.	1.0	1.3	0.7	0.7	0.5	1.2	.	0.5	1.2
Tenterfield	n.c	1.7	1.0	1.5	1.6	.	.	1.3	1.8	1.5	0.8	0.6	0.8	2.3	0.2	0.7	1.5
The Hills Shire	n.c	0.3	0.3	0.4	0.6	0.3	1.2	0.5	0.7	0.5	0.4	0.5	0.5	0.5	0.3	0.8	0.4
Tumbarumba	n.c	0.7	1.0	3.4	2.2	.	.	.	1.1	1.3	0.5	0.3	0.3	0.8	.	0.3	1.5
Tumut Shire	n.c	1.8	1.0	0.8	1.2	.	.	0.8	1.7	2.4	1.2	1.7	0.8	2.5	0.5	0.6	2.0
Tweed	n.c	0.8	0.7	1.0	0.7	0.7	.	0.7	0.7	0.9	1.0	0.8	0.7	0.8	0.7	0.8	0.7
Unincorporated Far West	n.c
Upper Hunter Shire	n.c	0.7	0.7	0.9	1.1	.	3.2	.	0.8	1.5	1.2	0.8	0.4	1.2	0.1	0.3	1.2
Upper Lachlan Shire	n.c	0.6	0.3	0.8	0.4	.	.	.	0.4	0.3	0.2	0.1	.	0.7	.	0.2	0.4
Uralla	n.c	0.9	0.5	1.4	4.2	.	.	1.4	0.2	0.4	0.4	0.1	0.1	0.8	.	0.4	0.4
Urana	n.c
Wagga Wagga	n.c	1.6	1.5	1.7	1.3	1.1	.	1.5	2.9	0.9	1.4	2.0	1.9	2.2	0.7	0.7	1.8
Wakool	n.c	0.5	0.5	0.3	2.6	0.4	0.4	1.0	0.4	.	0.3	0.6
Walcha	n.c	0.8	0.6	1.0	0.7	.	.	.	0.3	1.5	.	0.3	.	0.6	1.0	0.4	0.8
Walgett	n.c	5.0	2.8	2.2	2.3	4.4	1.5	1.2	1.1	2.2	0.2	0.5	3.7
Warren	n.c
Warringham	n.c	0.3	0.4	0.6	0.5	0.6	.	0.1	0.5	0.6	0.3	0.5	0.8	0.6	0.4	0.7	0.5
Warrumbungle Shire	n.c	1.3	1.1	2.8	2.3	.	.	1.0	1.1	1.9	0.7	0.9	0.5	1.3	0.2	0.6	1.5
Waverley	n.c	0.6	1.2	0.7	0.8	0.5	1.3	.	0.6	0.3	0.7	0.6	3.0	1.1	1.3	1.0	0.8
Weddin	n.c	0.6	0.4	1.2	1.2	.	.	.	0.5	1.8	0.6	0.4	.	0.8	.	0.3	1.1
Wellington	n.c	2.7	2.2	6.0	2.5	0.6	.	.	8.9	3.7	3.4	2.7	1.0	4.0	1.9	0.8	4.8
Wentworth	n.c	2.1	1.0	1.5	1.6	.	.	.	1.7	3.1	1.3	1.1	0.3	1.6	0.2	0.5	1.5
Willoughby	n.c	0.3	0.4	0.5	0.6	0.5	0.6	0.2	0.6	0.9	0.3	0.5	2.3	0.4	1.0	1.1	0.4
Wingecarribee	n.c	0.7	0.5	0.6	0.9	0.2	.	.	0.5	0.9	0.5	0.5	0.6	1.1	0.3	0.5	1.0
Wollondilly	n.c	1.0	0.5	1.2	1.2	0.4	1.0	.	0.5	0.7	0.6	0.4	0.1	0.6	0.2	0.6	0.5
Wollongong	n.c	1.0	1.0	1.1	0.7	1.0	1.3	0.9	1.0	1.5	1.1	1.2	1.3	1.0	0.6	0.6	1.1
Woollahra	n.c	0.4	0.5	0.6	0.5	0.5	.	.	0.8	0.4	0.5	0.6	0.4	1.0	1.6	0.7	0.6
Wyong	n.c	1.7	1.2	1.5	1.5	0.6	1.8	0.7	1.2	1.0	1.6	1.3	0.9	0.9	0.7	1.1	1.5
Yass Valley	n.c	0.5	0.5	1.1	0.7	.	.	0.6	0.4	0.5	0.2	0.4	0.2	0.5	0.1	0.4	0.5
Young	n.c	1.2	1.3	1.7	2.8	0.4	.	.	1.0	0.6	0.8	0.6	1.1	1.2	0.1	0.6	1.7
NSW	1.0	1.0	1.0	1.0	1.0	1.0	1.0	1.0	1.0	1.0	1.0	1.0	1.0	1.0	1.0	1.0	1.0

* For further explanation of rate calculation populations and the ratio to NSW rate, see page 44, Note 2 and paragraph 8. A result of '.' indicates either that there were no relevant offences recorded in the LGA, or that the population is less than 3,000 people and no rate was calculated.

Sydney LGA can be considered a special case since the population used to calculate the rate is much lower than the population using the area for work and entertainment and this will be reflected in higher incident rates.

* Murder counts and rates at the LGA level are available from the BOCSAR Crime Mapping Tool (<http://crimetool.bocsar.nsw.gov.au/bocsar/>) and in various datasets on the BOCSAR website (<http://www.bocsar.nsw.gov.au/>)

TABLE 3.3C: NUMBER OF RECORDED CRIMINAL INCIDENTS FOR MAJOR OFFENCES, NSW LGAs, 2016

NSW LGA	Murder *	Domestic violence related assault	Non-domestic violence related assault	Sexual assault	Indecent assault, act of indecency and other sexual offences	Robbery without a weapon	Robbery with a firearm	Robbery with a weapon not a firearm	Break and enter dwelling	Break and enter non-dwelling	Motor vehicle theft	Steal from motor vehicle	Steal from retail store	Steal from dwelling	Steal from person	Fraud	Malicious damage to property
Albury	n.a.	284	294	45	66	12	3	6	376	141	109	553	299	246	26	279	686
Armidale Dumaresq	n.a.	127	176	33	23	4	0	3	276	159	60	499	157	132	18	241	598
Ashfield	n.a.	92	112	15	41	2	0	5	128	20	44	201	204	140	23	352	216
Auburn	n.a.	282	327	36	52	18	9	12	345	99	119	395	112	183	106	677	463
Ballina	n.a.	109	137	28	36	4	0	0	127	92	40	218	110	131	13	212	339
Balranald	n.a.	5	14	1	3	0	0	0	8	10	4	7	2	17	0	4	23
Bankstown	n.a.	863	663	76	112	34	3	28	422	147	468	1,123	361	297	60	1,671	1,270
Bathurst Regional	n.a.	185	192	33	50	8	0	6	327	129	105	336	201	147	19	266	502
Bega Valley	n.a.	106	115	26	27	0	0	1	79	75	28	163	61	85	8	101	275
Bellingen	n.a.	36	34	7	8	0	0	1	21	42	12	39	9	22	0	31	77
Berrigan	n.a.	15	12	1	6	0	0	0	18	18	5	12	1	35	0	14	60
Blacktown	n.a.	2,054	1,564	238	318	179	18	54	1,550	370	778	2,432	1,073	962	312	2,813	3,406
Bland	n.a.	21	19	3	10	0	0	0	8	8	11	19	7	5	0	17	45
Blayney	n.a.	15	14	8	6	1	0	0	46	23	15	33	3	18	0	20	50
Blue Mountains	n.a.	247	190	65	54	11	3	5	167	89	72	206	87	162	22	305	588
Bogan	n.a.	27	12	1	3	0	0	0	24	11	14	20	5	12	0	8	39
Bombala	n.a.	9	6	2	2	0	0	0	8	6	0	2	0	6	0	3	11
Boorowa	n.a.	1	9	2	4	0	0	0	3	3	2	3	0	3	0	6	25
Botany Bay	n.a.	137	159	23	37	7	0	4	110	42	91	166	245	111	41	474	331
Bourke	n.a.	91	49	11	8	0	0	3	117	58	25	100	67	43	3	33	191
Brewarrina	n.a.	48	30	7	4	0	0	2	37	31	9	16	5	7	0	6	51
Broken Hill	n.a.	160	133	31	29	2	0	0	150	55	55	170	61	137	10	71	279
Burwood	n.a.	72	131	8	34	8	1	0	161	31	30	170	266	98	39	548	202
Byron	n.a.	97	231	25	35	2	0	2	150	85	68	295	110	136	56	254	317
Cabonne	n.a.	29	30	5	16	1	0	0	36	22	21	24	3	23	0	22	66
Camden	n.a.	223	175	30	58	3	1	3	172	83	96	181	123	143	9	433	443
Campbelltown	n.a.	933	717	147	195	46	7	21	765	216	340	1,000	745	417	100	1,108	1,749
Canada Bay	n.a.	108	137	20	36	9	1	5	254	64	99	356	84	225	32	698	322
Canterbury	n.a.	473	383	57	69	38	5	22	321	88	234	573	197	218	51	1,014	777
Carrathool	n.a.	9	23	2	5	0	0	0	13	9	4	10	1	5	0	10	27
Central Darling	n.a.	87	44	1	4	0	0	0	67	26	10	26	1	11	0	5	54
Cessnock	n.a.	358	267	56	65	10	4	10	420	214	296	527	179	290	22	344	573
Clarence Valley	n.a.	222	291	53	50	1	0	9	313	116	110	287	124	245	13	251	580
Cobar	n.a.	42	33	2	5	2	0	0	48	21	22	35	16	23	1	26	93
Coffs Harbour	n.a.	510	380	94	109	10	1	10	302	220	139	377	274	240	50	379	805
Conargo	n.a.	2	0	1	3	0	0	0	0	0	1	3	0	0	1	0	5
Coolamon	n.a.	12	10	1	10	0	0	0	11	6	6	4	5	14	0	7	35
Cooma-Monaro	n.a.	31	49	11	20	0	0	0	15	12	11	31	10	16	0	19	86
Coonamble	n.a.	48	47	2	12	0	0	1	110	40	15	65	31	42	1	22	116
Cootamundra	n.a.	29	30	6	7	0	0	0	22	9	7	14	7	31	0	15	87
Corowa Shire	n.a.	27	35	6	8	1	0	1	45	30	17	41	11	56	1	35	74
Cowra	n.a.	72	86	12	19	2	1	1	162	38	32	77	29	65	2	53	197
Deniliquin	n.a.	58	26	11	8	0	0	0	32	27	11	34	13	34	1	25	88
Dubbo	n.a.	305	299	46	76	8	3	12	647	197	255	867	366	273	45	297	709
Dungog	n.a.	24	31	7	9	0	0	0	27	23	14	20	2	15	1	17	55
Eurobodalla	n.a.	141	179	16	42	2	1	0	206	69	73	216	138	108	11	132	339
Fairfield	n.a.	735	645	86	107	53	9	45	491	184	409	1,028	311	304	90	1,223	1,184
Forbes	n.a.	81	66	14	11	0	0	0	97	56	19	72	9	51	5	44	156
Gilgandra	n.a.	33	23	4	11	1	0	2	37	10	4	15	7	22	0	19	58
Glen Innes Severn	n.a.	106	69	11	17	1	0	3	94	44	20	91	33	59	1	37	149
Gloucester	n.a.	17	26	5	11	0	0	1	14	11	3	9	8	25	1	12	52
Gosford	n.a.	736	697	135	166	15	4	16	650	227	332	1,062	484	372	81	915	1,575
Goulburn Mulwaree	n.a.	105	122	32	38	3	0	0	76	45	33	150	84	77	4	164	270
Great Lakes	n.a.	190	163	34	42	2	0	2	194	83	47	95	70	148	7	131	355
Greater Hume Shire	n.a.	18	13	16	9	1	0	0	25	20	12	32	9	19	0	26	52
Greater Taree	n.a.	250	203	70	86	2	0	5	285	278	103	170	102	210	16	213	550
Griffith	n.a.	242	168	17	31	10	0	10	180	83	54	199	151	95	1	104	315
Gundagai	n.a.	19	7	3	3	0	0	0	12	4	4	17	2	9	0	97	28
Gunnedah	n.a.	77	71	15	21	0	0	0	65	37	18	42	26	50	3	48	190
Guyra	n.a.	22	20	6	4	0	0	0	14	8	4	11	8	20	0	13	69
Gwydir	n.a.	14	16	2	7	0	0	0	11	9	5	15	4	20	0	9	41
Harden	n.a.	15	12	5	5	0	0	0	9	4	3	11	0	8	0	6	27
Hawkesbury	n.a.	258	239	39	60	5	2	9	184	94	138	392	155	183	28	329	489
Hay	n.a.	24	28	1	7	0	0	0	11	14	4	12	4	13	0	14	67
Holroyd	n.a.	422	325	53	78	29	5	13	479	117	197	557	223	246	48	770	654
Hornsby	n.a.	170	251	49	76	5	0	3	315	103	80	348	270	228	39	656	646
Hunters Hill	n.a.	15	23	4	7	2	0	1	43	11	15	42	4	22	7	41	48
Hurstville	n.a.	280	204	17	37	14	3	6	188	78	82	251	313	128	54	457	478
Inverell	n.a.	101	116	18	31	1	0	0	162	33	12	84	58	84	4	82	228
Jerilderie	n.a.	2	0	0	3	0	0	0	2	1	2	3	1	2	0	2	4
Junee	n.a.	41	41	9	11	0	0	1	22	11	8	13	5	20	0	16	67
Kempsey	n.a.	228	158	33	38	3	0	7	311	88	83	206	106	179	10	139	450
Kiama	n.a.	24	60	7	10	2	0	1	30	40	26	101	14	32	11	56	100
Kogarah	n.a.	161	147	14	33	7	1	4	111	28	47	146	47	74	15	339	364
Ku-ring-gai	n.a.	76	74	39	46	5	0	1	358	76	39	252	50	153	14	471	339
Kyogle	n.a.	45	34	6	18	0	0	0	32	29	18	21	5	27	0	38	86
Lachlan	n.a.	55	54	12	10	0	0	0	42	21	11	46	11	40	1	21	98
Lake Macquarie	n.a.	738	642	153	203	32	2	18	734	331	524	1,204	682	585	83	1,326	1,846
Lane Cove	n.a.	45	47	8	7	0	0	1	73	37	17	76	17	52	3	141	101
Leeton	n.a.	57	64	10	9	2	0	1	91	47	23	52	24	40	1	28	129

TABLE 3.3C: NUMBER OF RECORDED CRIMINAL INCIDENTS FOR MAJOR OFFENCES, NSW LGAs, 2016

NSW LGA	Murder *	Domestic violence related assault	Non-domestic violence related assault	Sexual assault	Indecent assault, act of indecency and other sexual offences	Robbery without a weapon	Robbery with a firearm	Robbery with a weapon not a firearm	Break and enter dwelling	Break and enter non-dwelling	Motor vehicle theft	Steal from motor vehicle	Steal from retail store	Steal from dwelling	Steal from person	Fraud	Malicious damage to property
Leichhardt	n.a.	137	179	20	18	9	0	7	176	61	76	285	89	195	26	450	413
Lismore	n.a.	174	280	69	104	5	0	7	208	78	98	249	160	135	27	235	475
Lithgow	n.a.	85	124	15	20	4	0	3	129	92	52	91	45	94	7	148	316
Liverpool	n.a.	978	708	145	213	39	3	27	823	197	422	1,315	855	539	123	1,746	1,347
Liverpool Plains	n.a.	67	41	3	11	0	0	0	32	42	14	18	16	32	0	29	85
Lockhart	n.a.	7	4	2	2	0	0	0	13	12	1	4	1	10	0	4	22
Lord Howe Island	n.a.	0	3	0	5	0	0	0	0	0	0	1	0	0	0	0	0
Maitland	n.a.	493	320	62	81	9	2	12	430	161	218	856	293	395	33	338	845
Manly	n.a.	34	198	20	24	4	0	0	98	45	38	160	127	118	41	229	270
Marrickville	n.a.	199	339	55	86	21	3	23	198	80	150	450	139	252	45	771	737
Mid-Western Regional	n.a.	123	133	26	32	0	1	0	89	39	24	95	37	104	3	84	243
Moree Plains	n.a.	254	168	26	39	8	0	6	279	136	82	188	136	142	7	89	537
Mosman	n.a.	32	36	5	22	1	0	1	44	23	10	71	18	63	9	89	131
Murray	n.a.	21	22	6	0	1	0	0	45	55	19	56	9	32	2	37	55
Murrumbidgee	n.a.	15	11	4	3	0	0	0	6	13	6	3	2	5	0	4	25
Muswellbrook	n.a.	92	91	23	25	0	0	2	156	69	59	130	77	84	9	64	251
Nambucca	n.a.	95	143	36	41	1	0	2	89	54	46	105	52	79	9	69	221
Narrabri	n.a.	98	88	11	12	1	1	1	107	42	34	79	38	71	4	41	224
Narrandera	n.a.	27	33	6	9	1	1	0	48	41	14	30	34	26	1	10	62
Narramine	n.a.	46	51	9	9	3	0	0	97	50	35	75	17	67	11	26	107
Newcastle	n.a.	715	1,144	149	191	56	9	30	927	287	462	1,904	723	719	174	1,441	2,141
North Sydney	n.a.	132	178	21	41	10	0	3	141	108	32	160	145	183	28	472	343
Oberon	n.a.	15	16	5	6	0	0	1	21	7	10	16	6	13	0	12	43
Orange	n.a.	254	253	57	68	5	4	15	401	141	145	405	290	200	27	325	546
Palerang	n.a.	9	19	8	6	0	0	0	25	9	15	21	1	35	1	16	69
Parkes	n.a.	118	114	25	27	3	0	0	79	66	31	121	58	90	3	61	301
Parramatta	n.a.	733	787	107	160	60	11	37	821	210	339	1,155	689	562	217	1,980	1,355
Penrith	n.a.	1,051	921	158	218	59	4	33	739	283	515	993	806	580	154	1,637	1,946
Pittwater	n.a.	74	130	14	15	3	0	1	85	64	42	253	84	85	16	275	269
Port Macquarie-Hastings	n.a.	253	318	66	84	3	0	9	193	99	111	281	199	222	26	321	531
Port Stephens	n.a.	350	290	76	72	3	0	11	374	131	139	415	171	248	15	386	783
Queanbeyan	n.a.	152	156	22	21	2	1	2	141	70	110	326	191	86	8	162	420
Randwick	n.a.	365	484	59	101	20	0	28	386	88	211	575	222	434	85	986	730
Richmond Valley	n.a.	131	139	30	40	2	0	4	150	60	55	156	42	85	4	112	398
Rockdale	n.a.	383	290	31	51	27	1	10	254	65	128	370	94	208	69	680	630
Ryde	n.a.	206	254	34	49	5	0	2	292	49	73	389	314	197	51	785	480
Shellharbour	n.a.	234	237	51	66	9	2	7	224	119	149	481	186	167	18	281	495
Shoalhaven	n.a.	387	431	95	125	8	1	9	453	170	157	477	294	253	10	479	893
Singleton	n.a.	84	68	17	17	1	0	1	103	71	70	112	63	87	10	66	178
Snowy River	n.a.	14	19	6	5	0	0	0	12	3	2	12	11	9	2	24	39
Strathfield	n.a.	110	146	21	38	12	0	2	209	51	92	240	54	154	50	452	248
Sutherland Shire	n.a.	486	601	64	135	12	1	5	350	127	193	614	517	278	65	898	1,306
Sydney	n.a.	958	3,267	200	348	190	9	65	801	601	312	1,626	2,625	1,054	1,402	5,536	2,734
Tamworth Regional	n.a.	336	327	75	88	9	0	8	493	114	108	418	265	327	20	331	798
Temora	n.a.	14	24	5	7	0	0	0	23	12	7	22	10	21	0	21	59
Tenterfield	n.a.	46	30	7	10	0	0	1	49	16	10	23	18	45	1	34	85
The Hills Shire	n.a.	244	268	53	95	11	5	10	498	142	131	530	280	284	43	948	626
Tumbarumba	n.a.	9	15	8	7	0	0	0	15	7	3	5	3	8	0	7	45
Tumut Shire	n.a.	79	46	6	12	0	0	1	75	42	23	102	27	79	4	43	188
Tweed	n.a.	289	275	61	58	11	0	7	234	133	158	376	188	202	40	467	562
Unincorporated Far West	n.a.	2	1	2	0	0	0	0	1	3	1	5	3	2	0	2	4
Upper Hunter Shire	n.a.	37	40	9	15	0	1	0	46	34	29	59	17	47	1	28	144
Upper Lachlan Shire	n.a.	19	11	4	3	0	0	0	13	4	3	3	0	15	0	10	27
Uralla	n.a.	22	14	6	24	0	0	1	6	4	4	5	1	15	0	16	22
Urana	n.a.	4	5	1	0	0	0	0	2	1	1	0	0	2	0	0	5
Wagga Wagga	n.a.	397	395	72	72	12	0	10	714	88	150	685	363	390	30	288	954
Wakool	n.a.	8	9	0	0	0	0	0	4	16	3	9	12	5	0	7	21
Walcha	n.a.	9	8	2	2	0	0	0	4	7	0	5	0	5	2	9	19
Walgett	n.a.	130	79	10	8	0	0	0	62	46	17	42	24	41	1	22	207
Warren	n.a.	36	24	4	5	0	0	0	28	4	9	26	7	9	0	8	48
Warringah	n.a.	197	263	66	67	17	0	2	291	138	94	425	380	250	43	725	628
Warrumbungle Shire	n.a.	49	45	18	20	0	0	1	41	29	12	49	14	36	1	36	121
Waverley	n.a.	169	357	33	49	7	2	0	159	39	86	236	673	224	62	497	491
Weddin	n.a.	9	6	3	4	0	0	0	7	10	4	7	0	8	0	7	34
Wellington	n.a.	95	83	36	20	1	0	0	313	51	53	129	28	102	11	48	358
Wentworth	n.a.	56	28	7	10	0	0	0	46	33	15	40	6	30	1	24	83
Willoughby	n.a.	73	141	24	43	7	1	2	171	110	36	196	551	91	48	554	274
Wingecarribee	n.a.	124	93	18	37	2	0	0	96	69	40	120	86	144	8	170	386
Wollondilly	n.a.	182	92	38	50	3	1	0	92	52	48	107	13	82	5	180	214
Wollongong	n.a.	792	822	147	140	39	6	20	835	469	387	1,371	850	594	88	827	1,820
Woollahra	n.a.	88	119	22	28	5	0	0	183	32	53	174	67	158	63	282	301
Wyong	n.a.	1,015	765	157	217	18	6	12	748	251	427	1,069	456	412	69	1,115	1,930
Yass Valley	n.a.	34	37	12	10	0	0	1	23	12	5	34	10	21	1	48	71
Young	n.a.	56	68	14	32	1	0	0	48	11	18	43	42	41	1	48	176
Prisons	n.a.	5	1,088	49	18	0	0	2	0	3	1	2	0	0	0	11	169
NSW	70	29,044	31,535	5,066	6,838	1,360	163	821	29,656	11,687	13,100	40,451	23,426	21,308	4,959	49,968	62,703

* LGA murder counts are in the Crime Mapping Tool (<http://crimetool.bocsar.nsw.gov.au/bocsar/>) and elsewhere on the BOCASAR website (www.bocsar.nsw.gov.au/)

TABLE 3.3D: NUMBER OF RECORDED CRIMINAL INCIDENTS FOR MAJOR OFFENCES, NSW LGAs, 2015

NSW LGA	Murder*	Domestic violence related assault	Non-domestic violence related assault	Sexual assault	Indecent assault, act of indecency and other sexual offences	Robbery without a weapon	Robbery with a firearm	Robbery with a weapon not a firearm	Break and enter dwelling	Break and enter non-dwelling	Motor vehicle theft	Steal from motor vehicle	Steal from retail store	Steal from dwelling	Steal from person	Fraud	Malicious damage to property
Albury	n.a.	268	331	51	80	8	0	5	309	133	118	362	246	207	38	281	751
Armidale Dumaresq	n.a.	164	165	27	22	10	0	13	446	94	85	263	102	109	12	115	423
Ashfield	n.a.	115	149	22	32	7	3	5	173	26	84	206	124	130	27	469	219
Auburn	n.a.	306	349	21	59	25	2	20	266	127	180	333	115	160	121	619	486
Ballina	n.a.	92	151	29	32	6	0	4	101	64	28	157	94	110	14	171	331
Balranald	n.a.	10	5	3	3	0	0	0	9	8	5	4	1	13	0	14	16
Bankstown	n.a.	916	669	88	122	47	10	32	650	222	641	928	397	298	64	1,784	1,191
Bathurst Regional	n.a.	208	209	56	47	7	1	8	349	159	88	244	214	197	30	210	561
Bega Valley	n.a.	104	112	24	49	0	0	0	60	66	28	83	44	87	5	72	319
Bellingen	n.a.	32	26	4	5	0	0	0	17	28	22	42	8	29	2	15	65
Berrigan	n.a.	19	20	6	6	0	0	0	16	13	14	13	9	23	0	13	70
Blacktown	n.a.	1,957	1,529	256	369	191	25	75	1,561	365	793	2,392	1,145	931	301	3,084	3,405
Bland	n.a.	18	21	1	3	0	0	0	19	11	7	21	3	20	1	13	55
Blayney	n.a.	20	18	7	3	0	0	0	27	19	11	19	7	12	0	18	48
Blue Mountains	n.a.	213	202	51	74	15	1	6	215	91	55	226	108	190	23	298	843
Bogan	n.a.	31	19	2	8	0	0	0	12	18	9	32	7	10	3	39	80
Bombala	n.a.	8	8	1	10	0	0	0	10	2	0	4	0	4	0	2	8
Boorowa	n.a.	5	8	1	2	0	0	0	6	7	4	2	0	10	0	6	15
Botany Bay	n.a.	123	158	16	24	8	0	6	124	44	94	249	212	114	51	551	322
Bourke	n.a.	135	83	8	14	3	0	1	91	41	30	71	44	45	3	38	169
Brewarrina	n.a.	59	48	12	10	1	0	0	31	17	4	11	1	13	0	6	61
Broken Hill	n.a.	183	101	23	24	2	0	1	111	38	31	132	32	96	10	71	289
Burwood	n.a.	75	102	9	25	13	4	7	145	20	77	163	264	94	59	667	218
Byron	n.a.	90	230	28	39	10	0	2	109	66	58	209	92	141	60	224	269
Cabonne	n.a.	45	33	11	11	0	0	0	51	24	23	37	5	42	0	24	67
Camden	n.a.	246	164	44	52	5	1	4	210	68	110	206	101	126	6	315	346
Campbelltown	n.a.	889	699	154	216	36	3	32	826	216	378	1,072	734	416	88	1,067	1,735
Canada Bay	n.a.	122	128	24	35	11	1	9	253	99	108	392	74	219	45	582	340
Canterbury	n.a.	488	373	52	76	49	10	35	407	92	361	633	140	212	67	1,360	784
Carrathool	n.a.	19	13	2	1	1	0	0	10	3	5	8	0	6	0	7	18
Central Darling	n.a.	101	54	4	4	0	0	0	25	22	5	5	0	15	1	8	42
Cessnock	n.a.	391	233	59	55	12	2	4	349	177	233	529	188	252	14	368	601
Clarence Valley	n.a.	217	266	45	63	3	1	6	284	153	96	278	156	298	26	172	621
Cobar	n.a.	52	31	7	7	0	0	0	29	47	25	55	6	21	0	21	113
Coffs Harbour	n.a.	448	455	101	114	6	1	16	463	189	155	509	245	237	51	304	809
Conargo	n.a.	1	1	0	2	0	0	0	7	0	2	0	0	6	0	1	1
Coolamon	n.a.	11	10	3	7	0	0	0	15	11	8	13	5	12	0	13	22
Cooma-Monaro	n.a.	22	30	8	12	1	0	0	14	28	6	35	11	20	0	23	68
Coonamble	n.a.	53	46	2	4	1	1	0	107	45	11	69	25	39	6	21	128
Cootamundra	n.a.	42	39	11	18	0	0	2	16	11	2	17	9	22	1	37	81
Corowa Shire	n.a.	37	26	14	14	0	0	0	52	26	12	42	14	68	1	25	93
Cowra	n.a.	78	110	12	18	1	0	0	122	33	20	66	33	67	3	50	276
Deniliquin	n.a.	38	40	8	26	0	0	0	25	16	6	32	15	37	1	18	119
Dubbo	n.a.	345	249	59	77	11	0	9	502	197	157	696	290	193	41	283	764
Dungog	n.a.	31	14	8	7	0	0	0	16	8	8	21	5	21	0	23	51
Eurobodalla	n.a.	203	170	44	61	2	0	4	194	54	49	239	108	105	4	107	407
Fairfield	n.a.	807	569	99	112	71	7	41	679	176	433	1,057	281	295	128	1,304	1,218
Forbes	n.a.	85	53	8	10	0	0	1	100	45	28	91	12	55	3	55	146
Gilgandra	n.a.	32	25	4	6	1	0	0	62	51	17	21	20	26	1	18	82
Glen Innes Severn	n.a.	76	64	9	22	0	0	0	48	38	10	34	5	37	2	37	133
Gloucester	n.a.	19	15	2	10	0	0	0	11	13	4	7	1	15	1	23	41
Gosford	n.a.	617	656	95	127	24	2	12	645	185	262	829	606	398	125	744	1,502
Goulburn Mulwaree	n.a.	124	134	22	35	1	0	0	85	51	35	133	116	73	3	127	333
Great Lakes	n.a.	189	166	23	62	5	0	1	166	52	52	126	95	167	15	147	368
Greater Hume Shire	n.a.	15	27	9	9	0	0	0	19	32	19	28	1	20	1	12	42
Greater Taree	n.a.	242	213	64	94	11	0	5	304	235	121	231	197	222	18	171	603
Griffith	n.a.	257	180	19	32	3	0	1	197	127	63	231	151	98	8	122	332
Gundagai	n.a.	13	9	5	3	0	0	0	6	1	3	12	4	8	0	53	25
Gunnedah	n.a.	57	99	18	15	1	0	0	123	45	32	98	47	66	3	109	233
Guyra	n.a.	40	24	3	8	0	0	0	18	27	14	17	3	30	0	12	63
Gwydir	n.a.	15	21	4	6	0	0	0	11	6	4	14	1	14	0	5	33
Harden	n.a.	8	7	4	6	0	0	1	11	8	0	7	6	8	0	8	32
Hawkesbury	n.a.	275	266	55	79	8	2	2	172	85	133	384	132	136	21	278	539
Hay	n.a.	11	21	1	7	0	0	1	13	15	6	23	3	18	0	26	63
Holroyd	n.a.	440	336	66	83	35	5	15	562	102	248	711	253	290	42	1,073	690
Hornsby	n.a.	193	209	58	68	8	1	5	383	87	93	401	344	212	41	735	732
Hunters Hill	n.a.	13	25	7	8	0	0	0	52	26	13	30	9	23	9	40	58
Hurstville	n.a.	249	222	28	43	15	3	9	267	68	170	287	207	134	61	501	394
Inverell	n.a.	113	112	16	35	3	0	0	97	53	15	80	60	73	4	55	264
Jerilderie	n.a.	4	5	1	0	0	0	0	1	2	0	1	1	0	0	3	11
Junee	n.a.	42	25	9	5	0	0	1	14	10	4	23	8	9	1	19	53
Kempsey	n.a.	245	183	31	53	11	4	13	374	85	92	151	115	211	20	107	393
Kiama	n.a.	39	42	8	16	0	0	2	58	26	24	136	14	34	9	61	96
Kogarah	n.a.	182	140	11	36	10	0	9	161	36	75	166	42	108	30	332	349
Ku-ring-gai	n.a.	75	70	22	48	2	0	3	347	69	43	188	40	171	20	431	377
Kyogle	n.a.	40	44	6	7	0	0	1	34	24	16	29	3	22	1	14	70
Lachlan	n.a.	52	69	7	21	2	0	0	57	31	22	63	9	37	0	11	144
Lake Macquarie	n.a.	748	640	165	211	16	8	21	716	354	524	1,225	484	532	82	1,183	1,861
Lane Cove	n.a.	31	32	14	21	2	0	0	90	33	14	68	21	61	8	158	102
Leeton	n.a.	68	56	14	20	0	0	1	73	42	24	38	13	42	3	28	126

TABLE 3.3D: NUMBER OF RECORDED CRIMINAL INCIDENTS FOR MAJOR OFFENCES, NSW LGAs, 2015

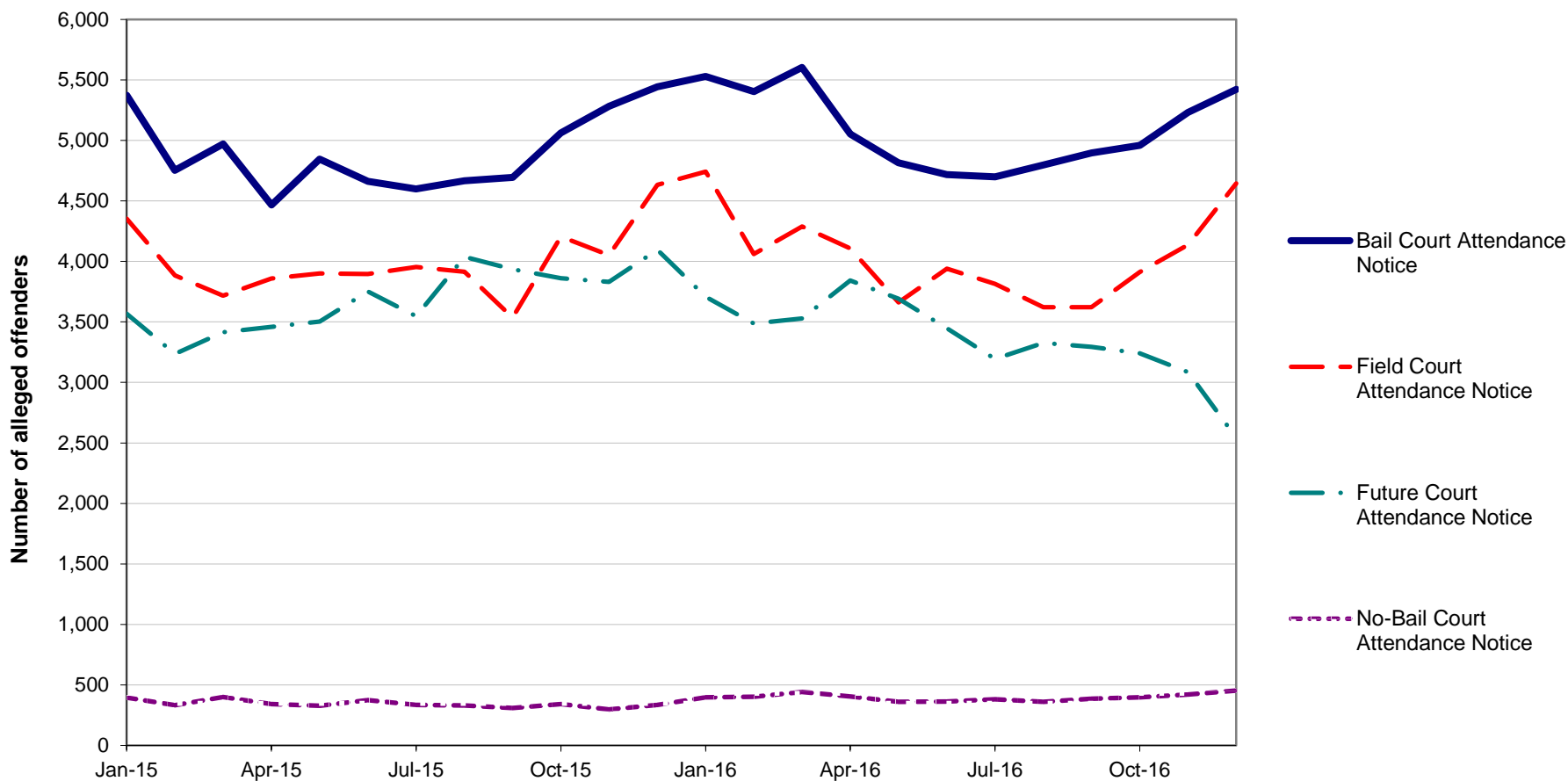
NSW LGA	Murder*	Domestic violence related assault	Non-domestic violence related assault	Sexual assault	Indecent assault, act of indecency and other sexual offences	Robbery without a weapon	Robbery with a firearm	Robbery with a weapon not a firearm	Break and enter dwelling	Break and enter non-dwelling	Motor vehicle theft	Steal from motor vehicle	Steal from retail store	Steal from dwelling	Steal from person	Fraud	Malicious damage to property
Leichhardt	n.a.	130	157	20	32	4	2	7	131	62	85	269	79	202	38	453	404
Lismore	n.a.	209	316	51	74	13	0	2	236	99	73	223	151	178	20	238	553
Lithgow	n.a.	94	89	18	18	1	0	2	115	75	40	91	61	90	14	86	258
Liverpool	n.a.	939	635	131	141	51	8	34	918	211	604	1,405	741	436	150	1,806	1,492
Liverpool Plains	n.a.	41	26	6	19	0	0	0	35	18	13	26	9	24	1	17	49
Lockhart	n.a.	13	14	1	1	0	0	0	8	9	8	4	0	7	0	5	14
Lord Howe Island	n.a.	0	1	0	0	0	0	0	0	4	0	0	0	0	0	1	1
Maitland	n.a.	470	303	70	101	9	3	17	366	198	181	715	191	269	46	339	804
Manly	n.a.	67	186	19	24	3	0	0	83	54	31	161	109	119	51	211	294
Marrickville	n.a.	248	387	44	94	21	1	11	302	88	218	479	179	333	85	961	819
Mid-Western Regional	n.a.	123	151	23	32	3	0	0	109	51	37	83	30	105	2	75	309
Moree Plains	n.a.	246	165	21	29	7	0	5	246	134	65	145	145	133	15	104	484
Mosman	n.a.	50	49	4	11	1	0	0	69	25	26	70	20	80	10	179	123
Murray	n.a.	15	14	2	6	1	1	0	32	23	10	25	6	15	1	20	37
Murrumbidgee	n.a.	8	12	2	4	0	0	0	6	5	2	15	3	12	0	8	27
Muswellbrook	n.a.	93	113	15	27	7	0	2	123	76	49	132	101	79	8	84	312
Nambucca	n.a.	109	85	18	24	1	1	5	205	44	71	95	39	89	4	72	225
Narrabri	n.a.	90	93	12	11	1	0	2	115	66	25	92	37	59	1	57	203
Narrandera	n.a.	25	15	2	7	0	0	1	50	39	15	35	24	29	2	15	57
Narromine	n.a.	71	68	11	9	0	0	2	106	55	31	96	10	72	5	34	133
Newcastle	n.a.	692	1,050	118	174	39	8	44	850	398	396	1,743	672	695	182	1,452	1,831
North Sydney	n.a.	118	164	19	34	8	0	2	194	89	40	214	100	248	36	578	321
Oberon	n.a.	32	14	3	6	1	0	0	18	11	9	12	4	24	1	14	53
Orange	n.a.	313	264	63	70	9	1	6	437	136	108	544	358	219	22	216	621
Palerang	n.a.	15	12	2	10	0	0	0	37	22	25	34	3	31	0	23	83
Parkes	n.a.	116	93	28	16	1	1	0	84	57	31	116	16	82	3	100	218
Parramatta	n.a.	742	860	102	134	87	8	36	931	269	325	1,260	745	549	230	2,167	1,443
Penrith	n.a.	1,054	983	166	198	64	6	41	982	231	479	1,199	758	606	156	1,489	2,050
Pittwater	n.a.	91	121	14	29	8	0	2	87	60	68	246	66	89	17	312	334
Port Macquarie-Hastings	n.a.	269	324	54	80	2	1	3	259	100	104	275	110	220	20	300	591
Port Stephens	n.a.	332	258	57	83	3	0	10	270	133	127	329	166	206	19	306	698
Queanbeyan	n.a.	138	123	16	25	1	2	1	188	72	82	341	148	107	7	205	373
Randwick	n.a.	366	473	50	73	39	6	14	459	81	215	644	209	423	111	1,108	808
Richmond Valley	n.a.	132	164	38	41	7	0	3	142	107	52	169	58	78	5	79	277
Rockdale	n.a.	341	254	36	41	20	1	15	284	99	203	471	131	255	79	794	640
Ryde	n.a.	169	224	31	79	10	0	6	309	112	72	307	367	222	49	1,202	475
Shellharbour	n.a.	272	232	64	70	9	1	13	265	104	145	374	256	158	25	293	569
Shoalhaven	n.a.	387	441	103	135	14	1	11	573	258	178	471	352	298	29	378	967
Singleton	n.a.	87	68	10	18	2	0	4	136	78	71	169	64	89	8	65	178
Snowy River	n.a.	16	19	2	4	0	0	0	10	14	3	10	6	4	4	14	36
Strathfield	n.a.	107	138	8	23	9	0	7	215	48	94	253	68	88	83	505	261
Sutherland Shire	n.a.	454	536	80	103	24	0	10	423	163	223	717	520	389	72	761	1,498
Sydney	n.a.	992	3,144	193	326	230	13	97	853	451	356	1,692	2,201	1,241	1,666	6,508	2,705
Tamworth Regional	n.a.	361	362	62	88	5	1	8	428	139	112	369	300	247	18	223	854
Temora	n.a.	22	15	4	1	0	0	1	13	9	4	29	11	23	0	18	65
Tenterfield	n.a.	47	24	10	8	0	0	0	68	18	8	43	6	38	0	13	75
The Hills Shire	n.a.	235	245	56	80	13	0	6	614	160	171	594	264	272	40	974	667
Tumbarumba	n.a.	13	20	3	9	0	0	0	5	5	3	7	1	11	2	6	26
Tumut Shire	n.a.	66	52	10	20	0	0	1	22	28	22	50	11	36	2	19	171
Tweed	n.a.	333	321	54	69	4	0	5	312	147	197	387	153	224	28	379	615
Unincorporated Far West	n.a.	1	2	2	1	0	0	0	0	2	1	6	1	2	1	0	2
Upper Hunter Shire	n.a.	27	34	13	15	0	1	0	42	32	30	49	19	43	1	44	142
Upper Lachlan Shire	n.a.	15	15	11	7	0	0	0	21	19	9	8	0	25	0	11	44
Uralla	n.a.	8	13	2	8	0	0	1	25	5	5	15	1	13	0	7	25
Urana	n.a.	0	2	0	3	0	0	0	4	2	1	0	0	4	0	2	6
Wagga Wagga	n.a.	327	347	65	72	10	2	4	815	176	277	768	351	395	22	239	960
Wakool	n.a.	5	11	2	2	0	0	0	11	7	1	12	0	9	0	7	19
Walcha	n.a.	9	12	4	2	1	0	0	3	6	0	9	0	7	0	18	17
Walgett	n.a.	175	109	17	14	2	0	1	134	46	22	52	34	47	4	20	271
Warren	n.a.	30	26	0	2	0	0	0	25	10	12	29	3	12	0	12	55
Warrimah	n.a.	188	277	38	79	15	0	5	290	123	136	464	366	242	56	809	808
Warrumbungle Shire	n.a.	47	51	8	15	2	0	0	46	21	15	40	8	47	2	24	93
Waverley	n.a.	201	315	27	43	9	0	3	190	39	126	245	568	216	94	647	521
Weddin	n.a.	10	2	3	8	0	0	0	13	10	4	9	1	8	0	6	19
Wellington	n.a.	74	76	17	15	0	0	0	173	48	29	64	25	89	1	27	326
Wentworth	n.a.	66	43	8	11	0	0	0	45	35	24	46	8	34	0	16	70
Willoughby	n.a.	86	139	22	39	8	2	3	182	87	41	187	464	135	54	555	367
Wingecarribee	n.a.	124	110	32	61	1	1	2	113	64	42	92	80	119	6	139	341
Wollondilly	n.a.	179	108	37	31	1	0	2	126	36	59	90	15	74	1	128	224
Wollongong	n.a.	723	805	142	150	39	3	26	979	413	433	1,287	697	713	129	909	1,858
Woollahra	n.a.	88	132	19	27	0	0	1	191	25	55	171	62	177	50	294	272
Wyong	n.a.	824	732	143	188	23	5	17	597	275	404	976	517	359	90	1,103	1,733
Yass Valley	n.a.	24	29	6	9	1	0	1	51	31	15	26	10	33	1	43	107
Young	n.a.	68	72	10	25	1	0	0	39	19	17	40	54	37	3	28	236
Prisons	n.a.	8	854	45	23	3	0	0	0	2	1	0	0	0	1	19	216
NSW	74	29,106	30,849	4,924	6,821	1,569	178	953	31,628	11,906	14,125	39,975	22,800	21,465	5,722	51,984	64,041

* LGA murder counts are in the Crime Mapping Tool (<http://crimetool.bocsar.nsw.gov.au/bocsar/>) and elsewhere on the BOC SAR website (www.bocsar.nsw.gov.au/)

SECTION 4:

**METHODS OF PROCEEDINGS
AGAINST ALLEGED OFFENDERS
2014, 2015 AND 2016**

Figure 4.1: TRENDS IN REFERRAL METHODS FOR ALLEGED OFFENDERS PROCEEDED AGAINST TO COURT, NSW, JANUARY 2015 TO DECEMBER 2016



Trends: Future Court Attendance Notice shows a statistically significant downward trend for the 24 month period (down by 8.7%).

No-Bail Court Attendance Notice shows a statistically significant upward trend for the 24 month period (up by 15.7%).

* Due to the time lag between the incident being recorded and the Future CAN being issued some upwards revision of data for the last three months of 2016 is expected.

**TABLE 4.1: NUMBER OF ALLEGED OFFENDERS RECORDED BY NSW POLICE FORCE BY METHOD OF LEGAL PROCEEDINGS
NSW, JANUARY 2014 TO DECEMBER 2016**

<i>Type of process</i>	<i>Number of alleged offenders</i>			<i>Trend[^]</i>	
	<i>Jan-Dec 2014</i>	<i>Jan-Dec 2015</i>	<i>Jan-Dec 2016</i>	<i>Annual percentage change Jan 2015 - Dec 2016</i>	<i>Average annual percentage change Jan 2014 - Dec 2016</i>
Proceeded against to court:					
Bail Court Attendance Notice	58,201	58,827	61,129	Stable	Stable
No-Bail Court Attendance Notice	3,323	4,117	4,765	15.7%	19.7%
Future Court Attendance Notice	36,424	44,244	40,391	-8.7%	5.3%
Field Court Attendance Notice	44,566	47,912	48,559	Stable	4.4%
All proceedings to court	142,514	155,100	154,844	Stable	4.2%
Proceeded against other than to court:					
Youth Justice Conference	727	678	547	-19.3%	-13.3%
Caution Young Offenders	7,039	7,170	6,477	-9.7%	-4.1%
Cannabis/other drug caution	6,051	6,304	5,538	-12.2%	Stable
Criminal Infringement Notice	10,182	9,613	9,575	Stable	Stable
Infringement Notice	626,466	642,481	690,432	7.5%	5.0%
Liquor Offence Compliance Notice	645	474	425	Stable	-18.8%
Warnings	8,159	10,128	9,781	Stable	9.5%
All proceedings other than to court	659,269	676,848	722,775	6.8%	4.7%
All proceedings	801,783	831,948	877,619	5.5%	4.6%

[^] For further explanation of **trend results**, see page 44, paragraphs 5 and 6.

SECTION 5:

**CLEARED CRIMINAL INCIDENTS
AND WHETHER LEGAL PROCEEDINGS
COMMENCED FOR SELECTED OFFENCES
JANUARY 2014 TO SEPTEMBER 2016**

TABLE 5.1: NUMBER OF RECORDED CRIMINAL INCIDENTS FOR SELECTED OFFENCES BY CLEAR UP STATUS AND WHETHER LEGAL PROCEEDINGS COMMENCED, NSW, JANUARY TO DECEMBER 2014

<i>Type of offence</i>	<i>Recorded criminal incidents</i>						
	<i>Total number recorded</i>	<i>Cleared within 30 days of reporting</i>			<i>Cleared within 90 days of reporting</i>		
		<i>Total number cleared[#]</i>	<i>Proceedings commenced within 30 days^{##}</i>	<i>% proceedings commenced within 30 days</i>	<i>Total number cleared[#]</i>	<i>Proceedings commenced within 90 days^{##}</i>	<i>% proceedings commenced within 90 days</i>
Murder*	n.a.	n.a.	n.a.	n.a.	n.a.	n.a.	n.a.
Domestic violence related assault	29,195	22,543	17,149	58.7	23,980	17,997	61.6
Non-domestic violence related assault	31,774	13,357	7,372	23.2	15,527	8,810	27.7
Sexual assault	4,970	839	423	8.5	1,196	588	11.8
Indecent assault, act of indecency and other sexual offences	6,576	1,723	968	14.7	2,205	1,224	18.6
Abduction and kidnapping	288	113	96	33.3	130	102	35.4
Robbery without a weapon	1,936	489	439	22.7	584	510	26.3
Robbery with a firearm	299	70	70	23.4	103	101	33.8
Robbery with a weapon not a firearm	1,197	328	310	25.9	400	370	30.9
Harassment, threatening behaviour and private nuisance	29,711	17,429	9,736	32.8	19,123	10,612	35.7
Break and enter dwelling	33,988	2,141	1,766	5.2	2,765	2,257	6.6
Break and enter non-dwelling	12,797	911	782	6.1	1,241	1,064	8.3
Motor vehicle theft	14,916	818	663	4.4	1,110	886	5.9
Steal from motor vehicle	42,754	1,070	827	1.9	1,423	1,106	2.6
Steal from retail store	20,591	9,807	7,988	38.8	10,836	8,936	43.4
Steal from dwelling	22,395	1,681	732	3.3	2,069	947	4.2
Steal from person	6,144	527	348	5.7	659	440	7.2
Stock theft	506	24	10	2.0	28	14	2.8
Fraud	49,202	3,402	2,643	5.4	5,465	4,273	8.7
Arson	5,633	441	184	3.3	492	222	3.9
Malicious damage to property	68,212	14,645	10,496	15.4	16,416	11,714	17.2

[#] Total number cleared includes both incidents where proceedings were commenced and those where no proceedings were commenced.

^{##} This includes incidents where a person was either proceeded against to court or proceeded against other than to court.

* Victims for whom incident was cleared.

TABLE 5.2: NUMBER OF RECORDED CRIMINAL INCIDENTS FOR SELECTED OFFENCES BY CLEAR UP STATUS AND WHETHER LEGAL PROCEEDINGS COMMENCED, NSW, JANUARY TO DECEMBER 2015

<i>Type of offence</i>	<i>Recorded criminal incidents</i>						
	<i>Total number recorded</i>	<i>Cleared within 30 days of reporting</i>			<i>Cleared within 90 days of reporting</i>		
		<i>Total number cleared[#]</i>	<i>Proceedings commenced within 30 days^{##}</i>	<i>% proceedings commenced within 30 days</i>	<i>Total number cleared[#]</i>	<i>Proceedings commenced within 90 days^{##}</i>	<i>% proceedings commenced within 90 days</i>
Murder*	n.a.	n.a.	n.a.	n.a.	n.a.	n.a.	n.a.
Domestic violence related assault	29,106	22,579	17,469	60.0	24,102	18,399	63.2
Non-domestic violence related assault	30,849	13,041	7,449	24.1	15,145	8,863	28.7
Sexual assault	4,924	853	367	7.5	1,267	507	10.3
Indecent assault, act of indecency and other sexual offences	6,821	1,749	964	14.1	2,376	1,217	17.8
Abduction and kidnapping	250	107	92	36.8	119	102	40.8
Robbery without a weapon	1,569	465	402	25.6	539	460	29.3
Robbery with a firearm	178	52	47	26.4	72	65	36.5
Robbery with a weapon not a firearm	953	329	312	32.7	384	362	38.0
Harassment, threatening behaviour and private nuisance	30,346	18,251	10,839	35.7	20,015	11,805	38.9
Break and enter dwelling	31,628	2,163	1,823	5.8	2,804	2,307	7.3
Break and enter non-dwelling	11,906	931	818	6.9	1,240	1,085	9.1
Motor vehicle theft	14,125	976	768	5.4	1,253	965	6.8
Steal from motor vehicle	39,975	1,095	862	2.2	1,423	1,121	2.8
Steal from retail store	22,080	10,418	8,535	38.7	11,625	9,695	43.9
Steal from dwelling	21,465	1,607	741	3.5	1,965	916	4.3
Steal from person	5,722	541	367	6.4	683	462	8.1
Stock theft	501	29	8	1.6	42	15	3.0
Fraud	51,984	3,725	2,855	5.5	5,831	4,507	8.7
Arson	5,034	324	116	2.3	361	143	2.8
Malicious damage to property	64,041	14,749	10,909	17.0	16,344	12,102	18.9

[#] Total number cleared includes both incidents where proceedings were commenced and those where no proceedings were commenced.

^{##} This includes incidents where a person was either proceeded against to court or proceeded against other than to court.

* Victims for whom incident was cleared.

TABLE 5.3: NUMBER OF RECORDED CRIMINAL INCIDENTS FOR SELECTED OFFENCES BY CLEAR UP STATUS AND WHETHER LEGAL PROCEEDINGS COMMENCED, NSW, JANUARY TO SEPTEMBER 2016

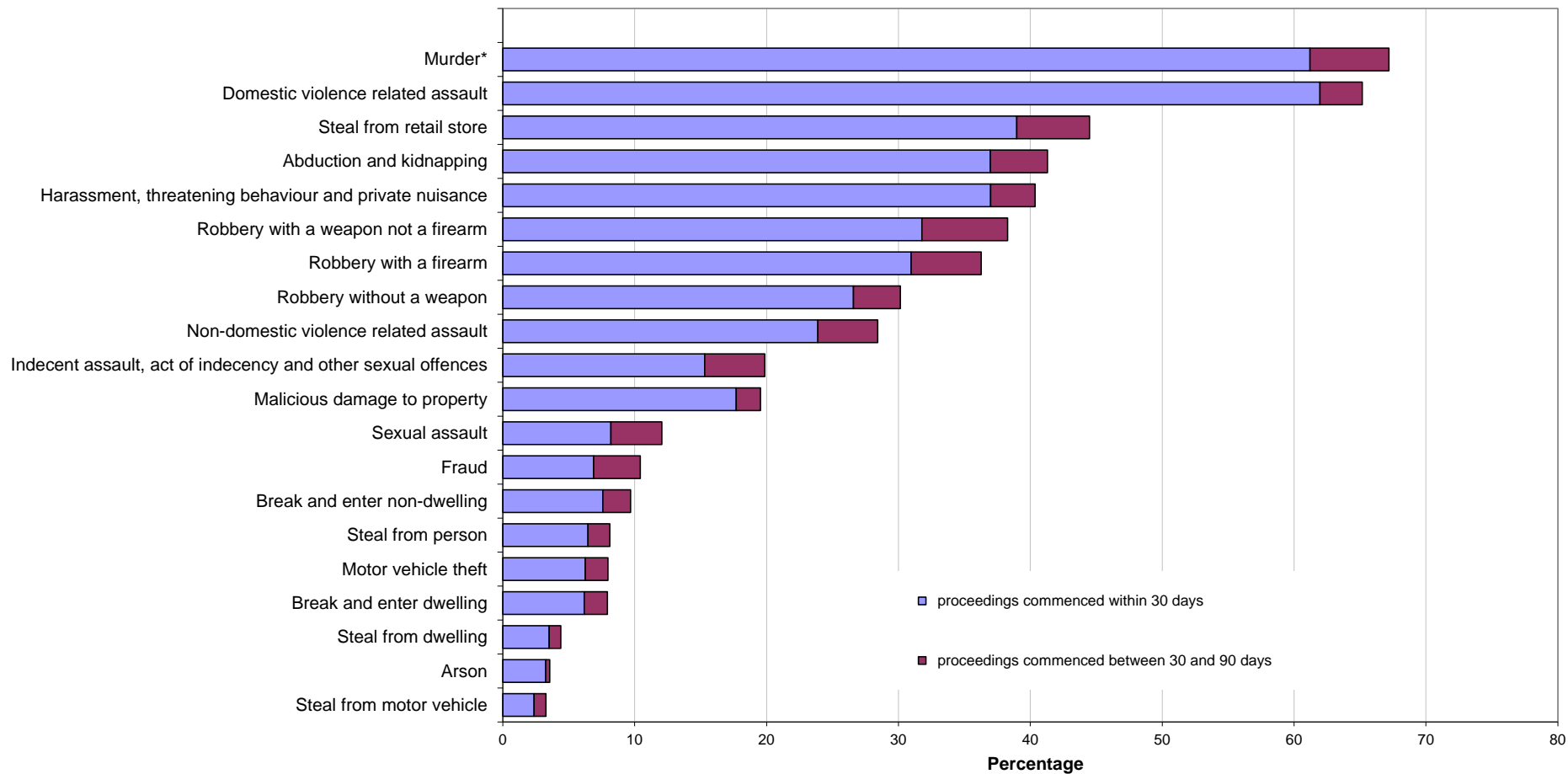
<i>Type of offence</i>	<i>Recorded criminal incidents</i>						
	<i>Total number recorded</i>	<i>Cleared within 30 days of reporting</i>			<i>Cleared within 90 days of reporting</i>		
		<i>Total number cleared[#]</i>	<i>Proceedings commenced within 30 days^{##}</i>	<i>% proceedings commenced within 30 days</i>	<i>Total number cleared[#]</i>	<i>Proceedings commenced within 90 days^{##}</i>	<i>% proceedings commenced within 90 days</i>
Murder*	47	n.a.	n.a.	n.a.	n.a.	n.a.	n.a.
Domestic violence related assault	21,302	16,738	13,196	61.9	17,788	13,880	65.2
Non-domestic violence related assault	23,067	9,698	5,512	23.9	11,189	6,555	28.4
Sexual assault	3,718	809	305	8.2	1,168	449	12.1
Indecent assault, act of indecency and other sexual offences	5,101	1,468	781	15.3	1,963	1,013	19.9
Abduction and kidnapping	184	78	68	37.0	91	76	41.3
Robbery without a weapon	1,012	293	269	26.6	332	305	30.1
Robbery with a firearm	113	35	35	31.0	42	41	36.3
Robbery with a weapon not a firearm	601	201	191	31.8	245	230	38.3
Harassment, threatening behaviour and private nuisance	22,559	13,473	8,344	37.0	14,785	9,104	40.4
Break and enter dwelling	22,326	1,676	1,378	6.2	2,168	1,771	7.9
Break and enter non-dwelling	8,722	739	662	7.6	965	845	9.7
Motor vehicle theft	9,712	730	607	6.3	960	775	8.0
Steal from motor vehicle	30,626	928	725	2.4	1,242	1,000	3.3
Steal from retail store	17,539	8,261	6,837	39.0	9,249	7,802	44.5
Steal from dwelling	15,718	1,238	552	3.5	1,479	692	4.4
Steal from person	3,729	328	241	6.5	415	303	8.1
Stock theft	482	32	9	1.9	48	16	3.3
Fraud	38,667	3,254	2,663	6.9	4,966	4,031	10.4
Arson	3,971	295	129	3.2	322	141	3.6
Malicious damage to property	46,351	11,005	8,210	17.7	12,146	9,055	19.5

[#] Total number cleared includes both incidents where proceedings were commenced and those where no proceedings were commenced.

^{##} This includes incidents where a person was either proceeded against to court or proceeded against other than to court.

* Victims for whom incident was cleared.

Figure 5.1: PERCENTAGE OF RECORDED CRIMINAL INCIDENTS FOR SELECTED OFFENCES WHERE LEGAL PROCEEDINGS COMMENCED WITHIN 30 AND 90 DAYS, NSW, JANUARY TO SEPTEMBER 2016



* For murder the data are counts of recorded victims, not criminal incidents.

APPENDICES

APPENDIX 1: TRENDS IN RECORDED CRIMINAL INCIDENTS FOR NSW

[1] Irrespective of how trends in recorded crime are presented, their interpretation is a difficult task. The recorded criminal incident data presented in this report are based on information derived from the NSW Police Force Computerised Operational Policing System (COPS), so only those incidents which are reported to, or detected by, police are included. The trends in recorded crime shown in this report will, therefore, reflect movements in the underlying factors which influence the detection, reporting and recording of crime, as well as changes in the true level of crime in the community.

[2] An alternative measure of the level of crime in Australia is available from crime victim surveys, for example the national *Crime Victimization Survey* by the Australian Bureau of Statistics (ABS)¹. As well as providing an estimate of the victimisation rate at the State level for a selected set of offences, this survey estimates the proportion of crimes which are not reported to police, and are therefore not recorded in the official statistics. In particular, personal crimes, such as assault and robbery, are less likely to be reported than crimes which involve households. Given that some offences have low reporting rates, it is possible that changes in recorded crime rates over time for these offences may be reflecting changes in reporting rates. This ABS publication contains personal and household summary crime data obtained from a national survey, much of which is disaggregated to state level.

[3] Public willingness to report crime, however, is just one of the extraneous factors which can affect trends in recorded crime. Shifts in policing policy can also have a marked effect on the number of recorded drug offences, cases of offensive behaviour or of receiving stolen goods. Therefore, for these offences, recorded rates probably do not accurately reflect actual rates. For this reason, the more detailed comparisons of crime rates and examination of trends in this document are restricted to offence categories which are more likely to be reported to, rather than detected by police.

[4] The interpretation of trends in official reports of crime can be considerably more difficult than the interpretation of trends in unemployment or inflation statistics. The ease with which recorded crime statistics can be misunderstood creates a temptation to offer an authoritative explanation for each major crime trend. Indeed, in many instances it is simply impossible to state with any assurance why a particular trend has appeared. As such, this report confines itself to identifying and describing trends in recorded crime, rather than explaining them.

[5] For each offence category or subcategory (except murder), a statistical test for trend was applied to the monthly numbers of recorded criminal incidents over the relevant period. In the case of murder, the statistical test for trend was applied to the monthly numbers of victims over the period. The trend test used was Kendall's rank-order correlation test (see, for example, Conover, W.J. 1980, *Practical Non-Parametric Statistics*, 2nd ed, John Wiley and Sons, pp 256-260). A two-tailed test was used to determine whether there had been an increasing or decreasing trend in the recorded numbers of criminal incidents over the relevant period covered in the report. Some month to month variations in the numbers of recorded incidents could be due in part to seasonal factors. The test for trend is not sensitive to seasonal variations; it is sensitive only to a generally increasing or generally decreasing trend over the time period examined.

[6] For the trend tests throughout this publication, where a statistically significant trend was found ($p < .05$), the extent of the trend is indicated by percentage change in the total number of recorded criminal incidents between the latest two consecutive 12-month periods for 24-month tests; and the average annual percentage change between the first 12-month period and the latest 12-month period for tests over longer periods. A trend test was not performed if there were fewer than 20 incidents in any of the years for the period in question. The result ' . ' indicates that a trend test was not performed. A non-significant test result ($p > .05$) is denoted by 'Stable' or by 'ns' in some larger LGA tables.

[7] In order to present an overview of crime trends in NSW the information in Section 1 relates to aggregate violent and property crime. The State graphs for violent and property offences are plotted as monthly rates² per 100,000 population. The State graph for violent offences shows distinct seasonality and the 12-month moving average (light grey line) indicates a downward path over the past five years, whilst the property offences graph and the 6-month moving average (light grey line) both indicate a strong downward path since about 2000. Violent offences include: *murder, attempted murder, manslaughter, assault - domestic violence related, assault - non-domestic violence related, assault police, robbery without a weapon, robbery with a firearm, robbery with a weapon not a firearm, sexual assault and indecent assault / act of indecency / other sexual offences*. Property offences include: *break and enter dwelling, break and enter non-dwelling, motor vehicle theft, steal from motor vehicle, steal from retail store, steal from dwelling, steal from person, stock theft, other theft and fraud*.

[8] The ratio to NSW rate statistics are a comparison of a NSW regional rate per 100,000 population to the NSW rate per 100,000 population. A ratio of one indicates parity with the NSW rate. Ratios indicating double the NSW rate (or more) before rounding are highlighted in red, whilst ratios indicating half the NSW rate (or less) before rounding are highlighted in yellow.

1. Australian Bureau of Statistics 2017, 4530.0 *Crime Victimization, Australia, 2015–16*, Cat. No. 4530.0, ABS, Canberra

2. For the rate calculations throughout this publication, population data were obtained from the Australian Bureau of Statistics publication: *Regional Population Growth Australia 2014-15* Cat. No. 3218.0. As no population estimates were available for 2016 when this report was published, rates for 2016 were calculated using 2015 population estimates.

APPENDIX 2: DEFINITIONS AND EXPLANATORY NOTES

The data in this report are extracted from the NSW Police Force's Computerised Operational Policing System (COPS). This system is used for record-keeping for all police operations, not just for criminal matters.

In this report:

- the counting units are recorded *criminal incidents* rather than recorded *offences* (except for murder and manslaughter, where the counting units are victims); and
- the data are categorised by date of *reporting* to police (or date of detection by police) rather than by date of *occurrence* of the offence.

RECORDED CRIMINAL INCIDENTS

A criminal incident is defined as an activity detected by or reported to police which:

- involved the same offender(s);
- involved the same victim(s);
- occurred at the one location;
- occurred during one uninterrupted period of time;
- falls into one offence category;
- falls into one incident type (for example, 'actual', 'attempted', 'conspiracy').

One incident may involve two offenders assaulting the same victim. This would be recorded as one assault incident. Alternatively, suppose a man reports to police that he found his neighbour in the process of damaging his car and, when confronted, the neighbour assaulted him. For such an event, two criminal incidents are recorded because two distinct offence types are involved (malicious damage to property and assault) even though the same parties were involved at the same time and in the same place.

RECORDED VICTIMS

For murder and manslaughter only, the counting units used are victims. Under the definition of a criminal incident (same parties, same time, same place, same offence and same incident type) one murder or manslaughter incident could involve two or more persons being killed. Because of the seriousness of these offences and their relatively small numbers, it is considered to be more appropriate to count the number of victims, rather than the number of criminal incidents. Hence, where one murder incident involves a person killing six people, six murder victims are counted.

OFFENCE CATEGORIES

The classification of offences in this report is broadly based on the Australian and New Zealand Standard Offence Classification (ANZSOC) devised by the Australian Bureau of Statistics (*ABS 2011, third edition, Cat. No. 1234.0*).

For all types of offence classifications used in the report, Appendix 3 lists the offence categories included in the classification. The original offence incident categories are those used by the NSW Police Force and do not necessarily correspond exactly with offences as defined in legislation.

MAJOR OFFENCE CATEGORIES

Major offence categories include the most serious personal violence and property offences. The most serious of these offences is *murder* for which the incident count is the number of victims. Assault offences include the two major offence categories of *domestic violence related assault* and *non-domestic violence related assault*. All sexual offences are categorised by the two major offence types, either as *sexual assault* or *indecent assault, act of indecency and other sexual offences*.

Robbery offences are sorted into three categories by use of weapon: *robbery with a firearm*, *robbery with a weapon not a firearm* or *robbery without a weapon*. The serious theft offences in this group start with the burglary categories of *break and enter - dwelling* and *break and enter - non-dwelling* followed by *motor vehicle theft* and *steal from motor vehicle*. Other theft offences included in the 17 major offences are *steal from retail store*, *steal from dwelling*, *steal from person* and *fraud*. The final property offence listed as a major offence is *malicious damage to property*.

APPENDIX 2: DEFINITIONS AND EXPLANATORY NOTES *continued*

COUNTING PERIOD

Criminal incidents are included in the counting period in which they were reported to or detected by police.

In most cases criminal incidents are recorded on COPS on the day of reporting. However there may be some time delay before the incident gains the status of accepted and verified (which are necessary conditions for inclusion in this report). It is therefore possible for some updating of data to occur. That is, data extracted for a specified period of time may differ according to the date of extraction of the data.

In recent years some historic murders have been re-entered on the COPS system after being referred to the unsolved homicide squad. Murders that were first reported to NSW Police prior to the introduction of the COPS system in 1995 but recorded on the COPS system in recent years are excluded from the statistics. Murders which took place prior to 1995 but were first reported to Police in or after 1995 are included in the statistics.

PROCEEDINGS AGAINST ALLEGED OFFENDERS

Police may proceed against alleged offenders through a variety of legal or other processes. Most alleged offenders are referred to the NSW Criminal Courts. The more serious offences are dealt with by way of a Bail Court Attendance Notice (CAN) or a No-Bail CAN. In these instances, the alleged offender is arrested, taken to a police station, fingerprinted and the details of the person and all charges are recorded. A Bail CAN is used when a bail determination is required and a No-Bail CAN when a bail determination is not required.

Following changes to the Bail Act in May 2014, No-Bail CANs are used almost solely for incidents of 'Breach of bail conditions' and no bail determination is required because the original determination stands until a new determination is made by the court. Alternatively a Field CAN may be issued by police at other locations. A Future CAN is used for less serious offences. Due to the time lag between the incident being recorded and the Future CAN being issued, data for the last three months are likely to be low and subject to future revision.

Some alleged offenders are proceeded against but diverted from the criminal court system. For many minor offences police can issue Infringement Notices. By paying the prescribed penalty the offender avoids having to go to court. Under the *Young Offenders Act 1997*, a juvenile offender can be issued with either a warning, a caution or referred to a youth justice conference.

Youth Justice Conference and cautions data in previous reports have included juvenile offenders initially proceeded against to court by Police and then referred to a conference or given a caution under the *Young Offenders Act* by the court. From the 2015 report, they are now counted as being proceeded against to court by Court Attendance Notice as that was the method of proceeding used by the Police. Consequently data in this report is not comparable with data in previously published reports. Comparable data for previous years is available on request.

Data on warnings under the *Young offenders Act*, is available from January 2010 onwards. Due to changes in how warnings are recorded, this data series can not be compared with warning data previously published. A youth justice conference is a face-to-face meeting between offenders, victims and their support persons. The offending behaviour is discussed and an outcome plan for the offender negotiated. Note that both the police and the courts can refer a young person to a youth justice conference. However, the number of alleged offenders proceeded against by way of a youth justice conference, as shown in Table 4.1, includes only police referrals to a youth justice conference.

Since mid-2008, Police have issued compliance notices for breaches of liquor licensing regulations/legislation. Commonly these are for relatively minor breaches eg fail to display regulated signs. Liquor Offence Compliance Notices have been added to the recorded crime collection from the 2015 report. Consequently data in this report is not comparable with data in previously published reports. Comparable data for all years available on request.

Each offender or alleged offender appears only once in the table for each event. Note that multiple criminal incidents may be associated with a single event. The processes are arranged in a hierarchy with the offender or alleged offender appearing in the most serious category where multiple incidents are involved. For example if an event involves two incidents and the alleged offender is charged for one incident but receives a caution for the second incident, the alleged offender appears only in the relevant 'proceeded against to court' category.

APPENDIX 2: DEFINITIONS AND EXPLANATORY NOTES *continued*

PROCEEDINGS AGAINST ALLEGED OFFENDERS *continued*

Note that in these tables, the year refers to the year in which the criminal incident or incidents were **reported** to police. For example, if an incident was reported to police in 2015 but the alleged offender was not apprehended and charged until 2016, the offence is counted for 2015. This section also includes a figure showing trends over 24 months in methods of proceeding against offenders and alleged offenders which lead to attendance at court. Alleged offenders who are not legally proceeded against are not included in this report.

CLEARED CRIMINAL INCIDENTS

A cleared criminal incident is one, which, in the view of police, has been satisfactorily cleared by the commencement of legal proceedings or otherwise.

An incident is cleared by the commencement of legal proceedings when police have laid a charge or an information against at least one person. The information may have been laid with a view to the issuing of a warrant, Future CAN or other process for the purpose of bringing an offender before the court.

A criminal incident is cleared other than by commencement of legal proceedings when, under normal circumstances, a charge or information would have been laid against at least one person, but, for a variety of reasons, police have been unable to make an arrest, despite knowing the identity of the offender and having sufficient evidence to support a charge. Examples of situations in which an offence may be cleared other than by charge include the following:

- . the offender is a juvenile and is cautioned;
- . the offender has died before a charge is made or information laid;
- . the offender has been committed to a psychiatric institution and is unlikely to be released;
- . there is an obstacle to charging, such as diplomatic immunity;
- . the complainant or essential witness is dead and proceedings would be aborted;
- . the offender is serving a sentence and police consider that no useful purpose would be served by prosecution.

The offence types included in these tables are those where the crime is likely to have been reported to police, rather than discovered or detected by police. Offence types where the numbers of recorded criminal incidents are influenced by police law enforcement activity (drug offences, for example) are excluded. For such offence types, the clear-up percentages are very high because clearing the offence generally occurs simultaneously with its detection (that is, an arrest is made when the crime is discovered). This report contains criminal incidents cleared within 30 and 90 days after the incident was reported to the NSW Police Force.

Because the data for this report were extracted in February 2017, the clear-up status after 90 days could not be determined for any offences reported in the last three months of 2016. Hence, the clear-up data for 2016 are for the first nine months of the year only.

REGIONAL STATISTICS

Statistics are provided on the number of criminal incidents (victims for murder) recorded for each of the Statistical Areas (SAs) of NSW as defined by the Australian Bureau of Statistics (ABS).

Recorded criminal incidents which occurred in correctional, detention or remand centres, however, are not counted in the SA in which the incident occurred. Appendix 4 provides maps indicating the location of each SA. Appendix 5 lists the Local Government Areas (LGAs using 2008 boundaries) within each of the SAs. Note that LGA boundaries change from time to time. A criminal incident is counted within a particular region when the location of the offence falls within that region.

For the rate calculations, population data were obtained from the Australian Bureau of Statistics publication: *Regional Population Growth, Australia, 2014-15*, Cat. No. 3218.0. As no population estimates were available for 2016 when this report was published, rates for 2016 were calculated using 2015 population estimates.

APPENDIX 3: BOCSAR OFFENCES MAPPED TO POLICE INCIDENT CATEGORIES

BOCSAR offence	NSW Police Force incident categories
Homicide	
Murder	Murder – actual
Attempted murder	Murder – attempted Shoot with intent to murder
Murder accessory, conspiracy	Murder – conspiracy Murder – solicit
Manslaughter – not driving	Manslaughter – actual
Driving causing death	Driving causing death
Assault	
	<i>Includes any of the following offences disaggregated by whether or not police have flagged the incident as domestic violence related:</i>
Domestic violence related	Actual bodily harm Common assault Grievous bodily harm (including malicious wounding) Shoot with intent other than to murder Spike drink/food
Non-domestic violence related	Actual bodily harm Common assault Grievous bodily harm (including malicious wounding) Shoot with intent other than to murder Spike drink/food
Assault Police	Assault Police officer
Sexual offences	
Sexual assault	Sexual assault – adult victim (16+ years old) Sexual assault – child victim, reported when adult Sexual assault – child victim, reported when child
Indecent assault, act of indecency	Act of indecency Aggravated act of indecency Indecent assault – adult victim (16+ years old) Indecent assault – child victim, reported when child Indecent assault – child victim, reported when adult
Other sexual offences	Bestiality Carnal knowledge Grooming/procuring Incest Indecent communication Peep or pry Wilful and obscene exposure Other sexual offence
Abduction and kidnapping	
	Kidnapping/Abduction

APPENDIX 3: BOCSAR OFFENCES MAPPED TO POLICE INCIDENT CATEGORIES

BOCSAR offence	NSW Police Force incident categories
Robbery	
Robbery without a weapon	<i>Includes any of the following offences in which no weapon was recorded:</i> Demand money with menaces Robbery Robbery with aggravation Robbery with wounding Other robbery
Robbery with a firearm	<i>Includes any of the following offences in which a firearm was recorded as a weapon:</i> Armed robbery Demand money with menaces Robbery Robbery with aggravation Robbery with wounding Other robbery
Robbery with a weapon not a firearm	<i>Includes any of the following offences in which a non firearm weapon was recorded:</i> Armed robbery Demand money with menaces Robbery Robbery with aggravation Robbery with wounding Other robbery
Blackmail and extortion	Extortion/Blackmail
Harassment, threatening behaviour and private nuisance	Intimidation (<i>includes threatening behaviour, stalking</i>) Riot and affray Telecommunications offence (<i>includes nuisance phone calls</i>) Threats against Police Violent disorder
Other offences against the person	Labour exploitation (<i>includes sexual servitude</i>) Malicious damage with intent to injure/endanger Negligent act cause grievous bodily harm Other offence against the person
Theft	
Break and enter – dwelling	<i>Dwelling includes premises where people reside such as house, home unit, caravan, tent as well as any attachment such as garage, shed, yard and garden.</i> Break/Enter and commit other felony Break/Enter and steal Break/Enter intent to commit other felony Break/Enter intent to steal
Break and enter – non-dwelling	<i>Non-dwelling includes commercial and government premises.</i> Break/Enter and commit other felony Break/Enter and steal Break/Enter intent to commit other felony Break/Enter intent to steal

APPENDIX 3: BOCSAR OFFENCES MAPPED TO POLICE INCIDENT CATEGORIES

BOCSAR offence	NSW Police Force incident categories
Theft continued:	
Receiving or handling stolen goods	Receiving Goods in custody Possess property stolen outside NSW
Motor vehicle theft	Theft of motor cars, motor cycles, and other vehicles / vessels Rebirthing vehicles / vessels
Steal from motor vehicle	Steal from motor vehicle
Steal from retail store	Steal from retail store
Steal from dwelling	Steal from dwelling Other stealing <i>occurring in a residential dwelling</i>
Steal from person	Steal from person
Stock theft	Steal stock (animal) Steal domestic animal or bird
Fraud	Company/corporate offence Computer crime Copyright/Intellectual property/Trademark Corrupt commission/practices Corrupt payment (receive or pay) Counterfeit currency Deception offence Embezzlement Fail to pay Fraudulent misappropriation Larceny clerk/servant/bailee Make/use false instrument Misappropriate cheques/funds Possess false instrument Publish false misleading statement Receiving (fraud related) Other fraud
Other theft	Steal from dwelling <i>occurring somewhere other than a residential or non-residential dwelling</i> (e.g. from hostels, motels, boarding houses) Steal from marine vessel Steal vessel Other stealing <i>occurring somewhere other than a dwelling</i> (e.g. in outdoor/public places)
Arson	Bushfire Malicious damage by fire Structure Vehicle (e.g. aircraft/motor vehicle/train/vessel) Other commodity
Malicious damage to property	Graffiti Malicious damage to property Public place – damage fountain/wall etc. Public place – damage shrine/monument

APPENDIX 3: BOCSAR OFFENCES MAPPED TO POLICE INCIDENT CATEGORIES

BOCSAR offence	NSW Police Force incident categories
Drug offences	
Possession and/or use of cocaine	Possess drug <i>where drug type is cocaine</i> Use or administer drug <i>where drug type is cocaine</i>
Possession and/or use of narcotics	Possess drug <i>where drug type is narcotics</i> Use or administer drug <i>where drug type is narcotics</i>
Possession and/or use of cannabis	Possess drug / plant <i>where drug type is cannabis</i> Use or administer drug <i>where drug type is cannabis</i>
Possession and/or use of amphetamines	Possess drug <i>where drug type is amphetamines</i> Use or administer drug <i>where drug type is amphetamines</i>
Possession and/or use of ecstasy	Possess drug <i>where drug type is ecstasy</i> Use or administer drug <i>where drug type is ecstasy</i>
Possession and/or use of other drugs	Possess drug <i>where drug type is not cocaine, narcotics, cannabis, amphetamines or ecstasy</i> Use or administer drug <i>where drug type is not cocaine, narcotics, cannabis, amphetamines or ecstasy</i>
Dealing, trafficking in cocaine	Supply drug <i>where drug type is cocaine</i>
Dealing, trafficking in narcotics	Supply drug <i>where drug type is narcotics</i>
Dealing, trafficking in cannabis	Supply drug/plant <i>where drug/plant type is cannabis</i>
Dealing, trafficking in amphetamines	Supply drug <i>where drug type is amphetamines</i>
Dealing, trafficking in ecstasy	Supply drug <i>where drug type is ecstasy</i>
Dealing, trafficking in other drugs	Supply drug/plant <i>where drug/plant type is not cocaine, narcotics, cannabis, amphetamines or ecstasy</i>
Cultivating cannabis	Cultivation
Manufacture drug	Manufacture drug
Importing drugs	Import drug/plant
Other drug offences	Forge and/or utter prescription Possess drug utensil Other drug detection/seizure offence
Prohibited and regulated weapons offences	
	Bomb hoax or threat Discharge firearm into premises Explosives licencing offence Firearms dealer offence Firearms not ensure safekeeping Improper storage of explosives Person search - Item/object found <i>where item/object is a weapon</i> Possess explosive/dangerous article Possess prohibited weapon/article Possess shortened firearm

APPENDIX 3: BOCSAR OFFENCES MAPPED TO POLICE INCIDENT CATEGORIES

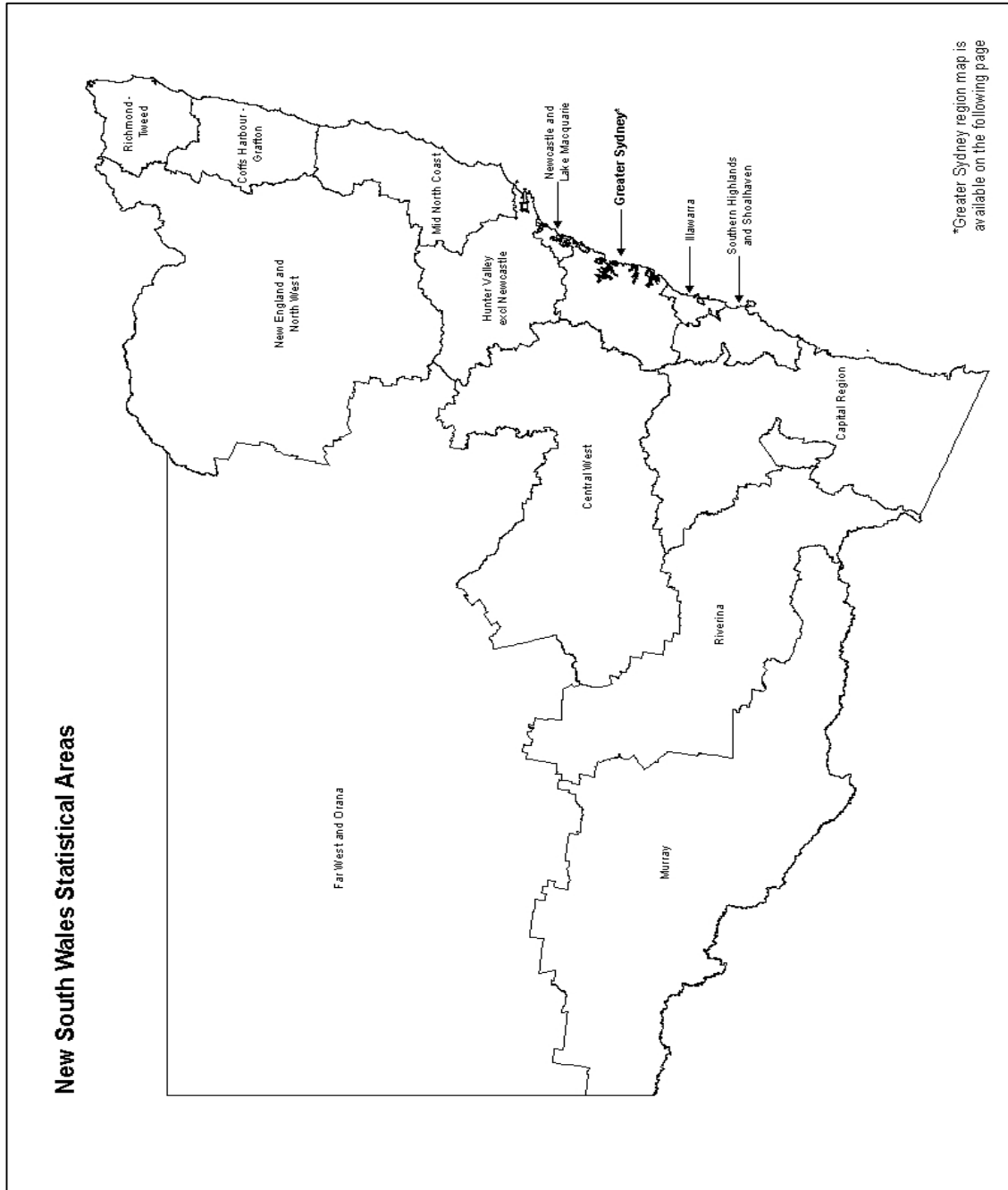
BOCSAR offence	NSW Police Force incident categories
Prohibited and regulated weapons offences	Possess whilst unlicensed Sell prohibited weapon/article Shorten firearm Trespass with firearm Unlawful handling/access/supply of explosives Unlawfully discharge firearm Use firearm under influence Use prohibited weapon/article Other explosives offence Other firearm licencing offence Other firearm offence Other prohibited weapon/article offence
Disorderly conduct	
Trespass	Trespass Remain inclosed lands
Offensive conduct	Offensive behaviour
Offensive language	Offensive language
Criminal intent	Armed with intent Consorting Consorting - warning Disguised with intent Enter land with intent Intent to repeat indictable offence Possess implements
Betting and gaming offences	Conduct/play illegal betting Conduct/play illegal game Own/manage premises – betting Own/manage premises – gaming Other gaming offence
Liquor offences	Consume alcohol in alcohol-free zone Consume/possess alcohol in public by minor Licensing legislation offence: <ul style="list-style-type: none"> – Offence by licensee/employee/secretary – Offence by minor – Offence by customer (not minor) – Supply liquor to juvenile – Offence against registered club
Pornography offences	Possess/disseminate child pornography Possess/publish indecent material
Prostitution offences	Soliciting/prostitution in public Prostitution – premises Prostitution – live off earnings Child prostitution Other vice offence

APPENDIX 3: BOCSAR OFFENCES MAPPED TO POLICE INCIDENT CATEGORIES

BOCSAR offence	NSW Police Force incident categories
Against justice procedures	
Escape Custody	Escapee – Corrective Services custody Escapee – Department of Community Services custody Escapee – Police custody Escapee – Other custody
Breach Apprehended Violence Order	Breach Apprehended Violence Order – domestic Breach Apprehended Violence Order – personal
Breach bail conditions	Breach bail conditions Breach control order
Fail to appear	Fail to appear
Resist or hinder officer	Refuse direction Refuse direction continue intoxication and disorder Refuse direction drug related Refuse direction intoxicated person Refuse direction not drug related Refuse for vehicle to be searched Refuse to be searched Refuse to produce object Resist/hinder officer
Other offences against justice procedures	Contravene Child Protection Prohibition Order (CPPO) Other judicial offence
Transport regulatory offences	Transport offence (<i>includes offences on the rail network such as travelling without a valid ticket, smoking, drinking or using offensive language on a train or railway land</i>)
Other offences	Animals – dog offences Family law offence Immigration/customs offence Obstruction Offence against transport service Other street offences (carry cutting weapon, offensive implement) Public mischief Terrorism offences Other miscellaneous offences Offences under various acts: Acts administered by NSW Roads and Maritime Services <i>Children and Young Persons (Care and Protection) Act 1998 (NSW)</i> <i>Family Law Act 1975 (Cwlth)</i> <i>Local Government Act 1993 (NSW)</i> <i>Pawnbrokers and Second-hand Dealers Act 1996 (NSW)</i> <i>Postal Services Act 1975 (Cwlth)</i> <i>Prevention of Cruelty to Animals Act 1979 (NSW)</i> <i>Rural Fires Act 1997 (NSW)</i> <i>Security Industry Act 1997 (NSW)</i> <i>Sydney Harbour Bridge Act 1932 (NSW)</i> <i>Tattoo Parlours Act 2012 (NSW)</i>

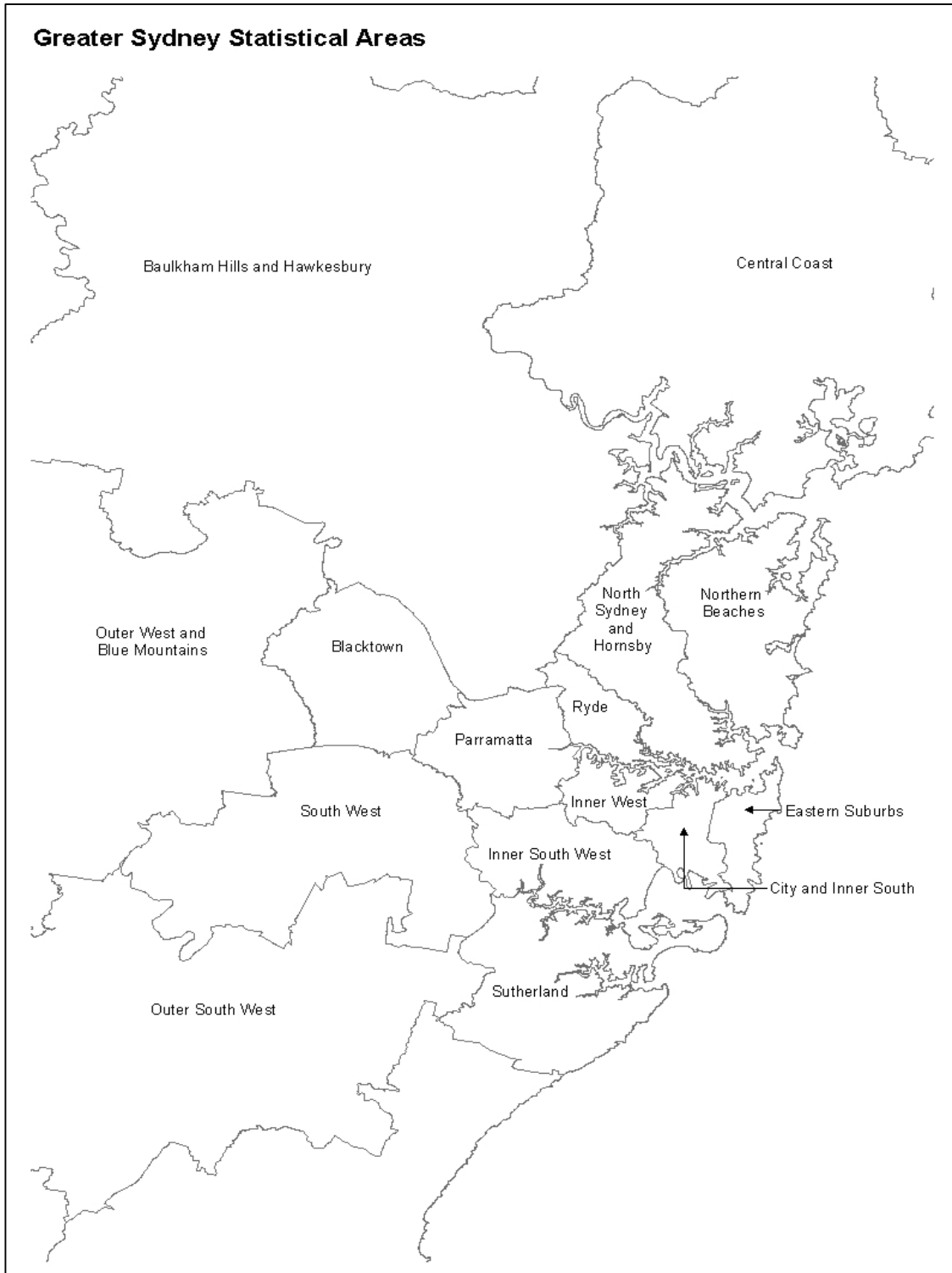
APPENDIX 4: MAPS

Map 1: New South Wales Statistical Areas



APPENDIX 4: MAPS *continued*

Map 2: Greater Sydney Statistical Areas



APPENDIX 5: LGAs IN GREATER SYDNEY STATISTICAL AREAS

Greater Sydney Statistical Areas

<i>Blacktown</i> Blacktown	<i>Baulkham Hills and Hawkesbury</i> Hawkesbury* The Hills Shire*	<i>Central Coast</i> Gosford Wyong
<i>City and Inner South</i> Botany Bay Marrickville* Sydney*	<i>Eastern Suburbs</i> Randwick* Waverley Woollahra	<i>Inner South West</i> Bankstown* Canterbury* Hurstville Kogarah Rockdale*
<i>Inner West</i> Ashfield Burwood Canada Bay Leichhardt Strathfield*	<i>North Sydney and Hornsby</i> Hornsby* Ku-ring-gai Lane Cove Mosman North Sydney Willoughby	<i>Northern Beaches</i> Manly Pittwater Warringah
<i>Outer South West</i> Camden* Campbelltown* Wollondilly*	<i>Outer West and Blue Mountains</i> Blue Mountains* Penrith*	<i>Parramatta</i> Auburn Holroyd* Parramatta*
<i>Ryde</i> Hunters Hill Ryde*	<i>South West</i> Fairfield* Liverpool*	<i>Sutherland</i> Sutherland Shire* Wollongong Shellharbour

* These LGAs span across two or more Statistical Areas.

These LGAs are listed under the Greater Sydney Statistical Areas which contain the largest area of each LGA.

APPENDIX 5: LGAs IN NSW REGIONAL STATISTICAL AREAS**NSW Regional Statistical Areas**

Capital Region	Central West	Coffs Harbour - Grafton	Far West and Orana
Bega Valley	Bathurst Regional	Bellingen*	Bogan
Bombala	Bland*	Clarence Valley*	Bourke
Boorowa	Blayney	Coffs Harbour	Brewarrina
Cooma-Monaro*	Cabonne*		Broken Hill
Eurobodalla	Cowra		Central Darling
Goulburn Mulwaree	Forbes		Cobar
Harden	Lachlan*		Coonamble
Palerang	Lithgow		Dubbo
Queanbeyan	Mid-Western Regional*		Gilgandra
Snowy River	Oberon*		Narromine
Upper Lachlan Shire	Orange		Unincorporated Far West
Yass Valley*	Parkes		Walgett
Young	Weddin		Warren
			Warrumbungle Shire*
			Wellington*
Hunter Valley excluding Newcastle	Illawarra	Mid North Coast	Murray
Cessnock	Kiama*	Gloucester	Albury
Dungog	Shellharbour	Great Lakes*	Balranald
Maitland*	Wollongong	Greater Taree	Berrigan
Muswellbrook		Kempsey	Conargo
Port Stephens*		Lord Howe Island	Corowa Shire
Singleton*		Nambucca*	Deniliquin
Upper Hunter Shire*		Port Macquarie-Hastings	Greater Hume Shire*
			Hay
			Jerilderie*
			Murray
			Urana*
			Wakool
			Wentworth
New England and North West	Newcastle and Lake Macquarie	Richmond - Tweed	Riverina
Armidale Dumaresq*	Lake Macquarie*	Ballina	Carrathool*
Glen Innes Severn	Newcastle	Byron	Coolamon
Gunnedah		Kyogle	Cootamundra
Guyra		Lismore	Griffith
Gwydir		Richmond Valley*	Gundagai
Inverell		Tweed	Junee
Liverpool Plains*			Leeton
Moree Plains			Lockhart*
Narrabri			Murrumbidgee
Tamworth Regional			Narrandera
Tenterfield			Temora
Uralla			Tumbarumba
Walcha			Tumut Shire*
			Wagga Wagga
Southern Highlands and Shoalhaven			
Shoalhaven*			
Wingecarribee*			

* These LGAs span across two or more Statistical Areas.

These LGAs are listed under the NSW Regional Statistical Areas which contain the largest area of each LGA.

