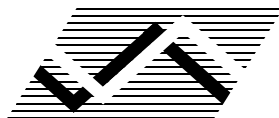


---

# **NEW SOUTH WALES RECORDED CRIME STATISTICS 2009**

---

**Derek Goh and Steve Moffatt**



NSW Bureau of Crime Statistics and Research

## ACKNOWLEDGEMENTS

The production of this report was greatly assisted by officers within the NSW Police Force. Special thanks are due to officers in Business and Technology Services and in Corporate Information, Executive Support Group. The following officers of the NSW Bureau of Crime Statistics and Research contributed significantly to the production of this report. Thanks to Florence Sin for guidance in the publishing of the report. Thanks also to Neil Marott and Tracy Painting for processing, validating and advising on the data contained in the report. Finally, thanks to Jackie Fitzgerald, Jessie Holmes and Katrina Grech for reviews and presentation improvements and Bryan Price for the mapping work used on the cover of the report.

2010

Published by the NSW Bureau of Crime Statistics and Research  
Attorney General's Department  
Level 8  
St James Centre  
111 Elizabeth Street  
Sydney 2000  
Australia

Phone: + 61 (2) 9231 9190  
Fax: + 61 (2) 9231 9187  
Email: [bcsr@agd.nsw.gov.au](mailto:bcsr@agd.nsw.gov.au)  
Website: [www.bocsar.nsw.gov.au](http://www.bocsar.nsw.gov.au)  
ISSN 1035-9044

This report is available in pdf format on our website and may be provided in alternative formats. Please contact the Bureau on 9231 9190 or email us at [bcsr@agd.nsw.gov.au](mailto:bcsr@agd.nsw.gov.au).

### Front Cover

---

#### **Offences against justice procedures by Local Government Area (LGA)**

In 2009 NSW Police recorded 46,013 incidents for the category **offences against justice procedures**. This category represents the sum of incidents of *breach bail conditions*, *breach apprehended violence order*, *resist or hinder officer*, *escape custody*, *fail to appear* and *other offences against justice procedures* recorded by NSW Police. *Breach bail conditions* has grown 15-fold since 1995 from around 10% of **offences against justice procedures** in 1995 to around 54% in 2009. The number of recorded incidents of **offences against justice procedures** has doubled since 2000.

## INTRODUCTION

This report presents data on crime reported to, or detected by, the NSW Police Force from January 1995 to December 2009, with a focus on the statistical trends for the 24 months ending December 2009. The data were extracted from the Computerised Operational Policing System (COPS) of the NSW Police Force in February 2010.

As an overview of crime trends, a section relating to aggregate *violent* and *property* crime has been added to this year's report. The State graph for violent offences shows a stable trend with distinct seasonality, whilst the property crime trend is significantly downwards for recorded offences. Violent offences include: *murder, assault - domestic violence related, assault - non-domestic violence related, assault police, robbery without a weapon, robbery with a firearm, robbery with a weapon not a firearm, sexual assault and indecent assault / act of indecency / other sexual offences*. Property offences include: *break and enter dwelling, break and enter non-dwelling, motor vehicle theft, steal from motor vehicle, steal from retail store, steal from dwelling, steal from person, stock theft, other theft and fraud*.

The report includes an overview of trends in the most recent two-year period for a selection of major offence categories, firstly for NSW and then across NSW regions broken down to the level of Local Government Area. At the State level, for the two years to the end of December 2009, no major offence category has been trending upwards. Eight of the 17 major offence categories were trending downwards. These included two robbery offences (*robbery without a weapon* and *robbery with a weapon not a firearm*) and six theft offences (*break and enter dwelling, break and enter non-dwelling, motor vehicle theft, steal from motor vehicle, steal from person and fraud*).

Warnings are no longer included in *Section 4: Methods of proceedings against alleged offenders*. Changes to the COPS system on 7 August 2008 restricted this category to formal warnings given under the provisions of the *Young Offenders Act 1997*. Previously this category included formal and informal warnings issued to juveniles and adults. On 10 December 2008, a further change to the COPS system modified how *Young Offenders Act* warnings were recorded, so there is no continuity in the previously published series.

There is one definitional change from last year's report. Prior to August 2008, if police suspected a criminal incident reported to them did not occur they could record it as 'doubtful'. In the past, BOCSAR's recorded crime statistics have included 'accepted' and 'doubtful' incidents. In August 2008 NSW Police removed the 'doubtful' category from COPS, instead directing police officers to categorise these incidents as 'accepted' unless evidence existed to indicate the crime did not occur, in which case the incident should be categorised as 'rejected'. Thus recorded crime statistics from August 2008 to the present have not contained 'doubtful' incidents. In order to present a continuous series BOCSAR have decided to retrospectively limit recorded crime statistics to only 'accepted' incidents. To do this we have removed the 'doubtful' incidents from crime data from January 1995 to August 2008. There will therefore be a slight revision to incident counts recorded prior to 2008.

As expected, the proportion of incidents flagged as 'doubtful' has depended on the particular offence type. For example about nine percent of *abduction and kidnapping* incidents were previously recorded as 'doubtful'. In the vast majority of offences, however, fewer than one percent of incidents were recorded as 'doubtful' so the exclusion will have little impact. Historical data to 1995, with 'doubtful' incidents excluded are available on our website.

Dr Don Weatherburn  
**Director**

April 2010

## CONTENTS

<b>SECTION 1: OVERVIEW OF TRENDS IN VIOLENT AND PROPERTY CRIME</b>	. . .	5
Figure 1.1 NSW long-term trend in violent crime	. . .	7
Figure 1.2 NSW long-term trend in property crime	. . .	7
Table 1.1 Trends in violent and property offences, NSW Statistical Divisions (SDs) and NSW	. . .	8
Table 1.2 Trends in violent and property offences, NSW Metropolitan Statistical Subdivisions (SSDs)	. . .	9
Table 1.3 Trends in violent and property offences, NSW Local Government Areas (LGAs)	. . .	10
<b>SECTION 2: OVERVIEW OF TRENDS IN RECORDED CRIME, BY OFFENCE TYPE</b>	. . .	13
Table 2.1 Trends in recorded criminal incidents for major offences, NSW, January 2005 to December 2009	. . .	14
Table 2.2 Periodic trends in recorded criminal incidents for major offences, NSW, January 2004 to December 2009	. . .	15
Table 2.3 Number and trends in recorded criminal incidents for all offences, NSW, January 2008 to December 2009	. . .	16
Table 2.4 Number and outcome of 24-month trend tests for major offences, NSW LGAs, March 2004 to December 2009	. . .	17
Figure 2.1A Number of NSW LGAs with significant upward trends for major offences, January 2007 to December 2008 and January 2008 to December 2009	. . .	18
Figure 2.1B Number of NSW LGAs with significant downward trends for major offences, January 2007 to December 2008 and January 2008 to December 2009	. . .	18
<b>SECTION 3: TRENDS, RATE COMPARISONS AND RECORDED CRIMINAL INCIDENTS FOR MAJOR OFFENCES, NSW REGIONS AND LOCAL GOVERNMENT AREAS (LGAS)</b>	. . .	19
Table 3.1A Trends in recorded criminal incidents for major offences, NSW SDs, January 2008 to December 2009	. . .	20
Table 3.1B Ratio to NSW rate of recorded criminal incidents per 100,000 population, major offences, NSW SDs, 2009	. . .	20
Table 3.1C Number of recorded criminal incidents for major offences, NSW SDs, 2009	. . .	21
Table 3.1D Number of recorded criminal incidents for major offences, NSW SDs, 2008	. . .	21
Table 3.2A Trends in recorded criminal incidents for major offences, NSW Metropolitan SSDs, January 2008 to December 2009	. . .	22
Table 3.2B Ratio to NSW rate of recorded criminal incidents per 100,000 population, major offences, NSW Metropolitan SSDs, 2009	. . .	22
Table 3.2C Number of recorded criminal incidents for major offences, NSW Metropolitan SSDs, 2009	. . .	23
Table 3.2D Number of recorded criminal incidents for major offences, NSW Metropolitan SSDs, 2008	. . .	23

*NSW Recorded Crime Statistics 2009*

Table 3.3A	Trends in recorded criminal incidents for major offences, NSW LGAs, January 2008 to December 2009	. . . 24
Table 3.3B	Ratio to NSW rate of recorded criminal incidents per 100,000 population, major offences, NSW LGAs, 2009	. . . 26
Table 3.3C	Number of recorded criminal incidents for major offences, NSW LGAs, 2009	. . . 28
Table 3.3D	Number of recorded criminal incidents for major offences, NSW LGAs, 2008	. . . 30
<b>SECTION 4: METHODS OF PROCEEDINGS AGAINST ALLEGED OFFENDERS, 2007, 2008 AND 2009</b>		<b>. . . 33</b>
Figure 4.1	Trends in referral methods for alleged offenders proceeded against to court, NSW, January 2008 to December 2009	. . . 34
Table 4.1	Number of alleged offenders recorded by NSW Police by method of legal proceedings, NSW, 2007-2009	. . . 35
<b>SECTION 5: CLEARED CRIMINAL INCIDENTS AND WHETHER LEGAL PROCEEDINGS COMMENCED FOR SELECTED OFFENCES, JANUARY 2007 TO SEPTEMBER 2009</b>		<b>. . . 37</b>
Table 5.1	Number of recorded criminal incidents for selected offences by clear up status and whether legal proceedings commenced, NSW, January 2007 to December 2007	. . . 38
Table 5.2	Number of recorded criminal incidents for selected offences by clear up status and whether legal proceedings commenced, NSW, January 2008 to December 2008	. . . 39
Table 5.3	Number of recorded criminal incidents for selected offences by clear up status and whether legal proceedings commenced, NSW, January 2009 to September 2009	. . . 40
Figure 5.1	Percentage of recorded criminal incidents for selected offences where legal proceedings commenced within 30 and 90 days, NSW, January 2009 to September 2009	. . . 41
<b>APPENDICES</b>		<b>. . . 43</b>
Appendix 1	Trends in recorded criminal incidents for NSW	. . . 44
Appendix 2	Definitions and Explanatory Notes	. . . 45
Appendix 3	BOCSAR offences mapped to Police incident categories	. . . 48
Appendix 4	Maps	. . . 54
Appendix 5	Local Government Areas in Sydney Statistical Subdivisions and NSW regional Statistical Divisions	. . . 56



---

**SECTION 1:**

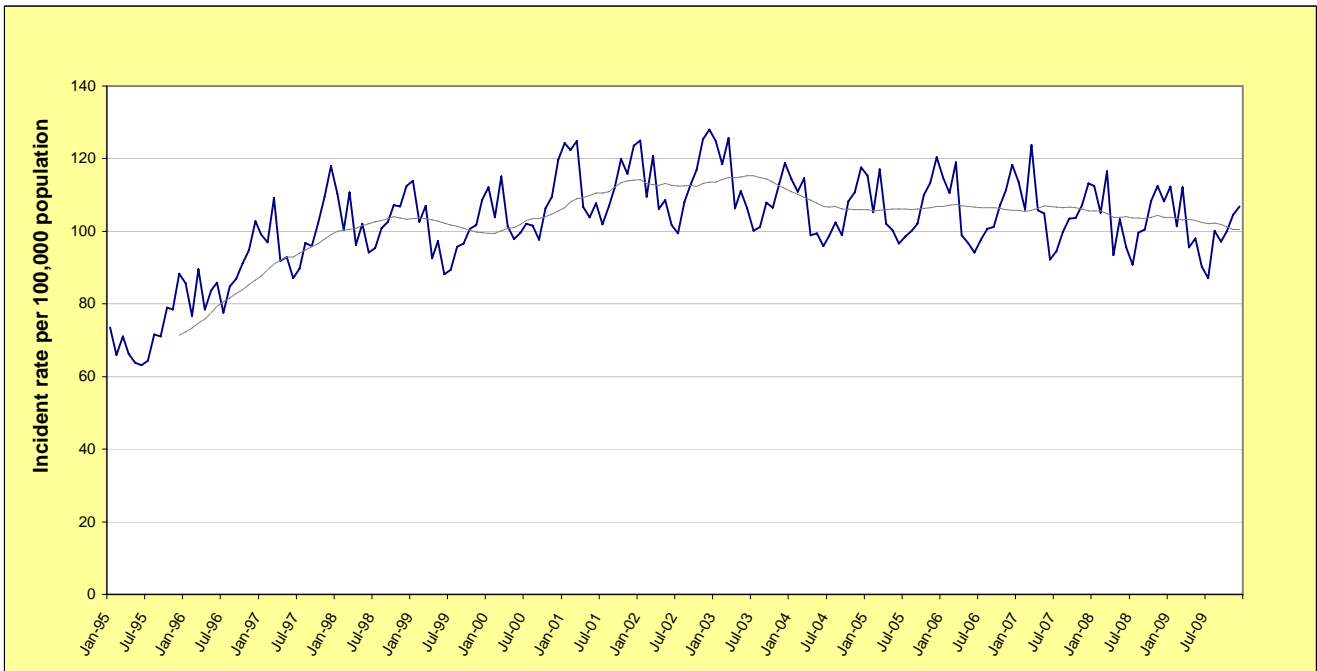
**OVERVIEW OF TRENDS  
IN VIOLENT AND PROPERTY CRIME**

---

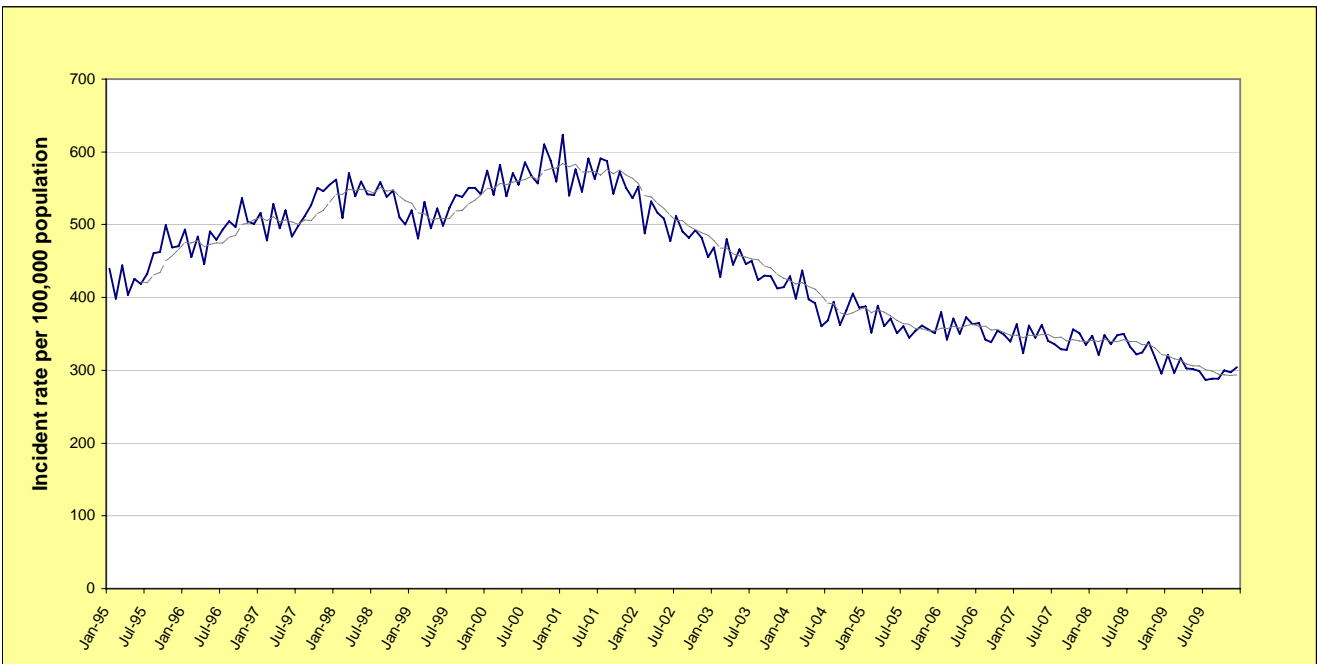




**FIGURE 1.1: NSW LONG-TERM TREND IN VIOLENT CRIME\***



**FIGURE 1.2: NSW LONG-TERM TREND IN PROPERTY CRIME\*\***



\* **Violent offences** include: murder, assault - domestic violence related, assault - non-domestic violence related, assault police, robbery without a weapon, robbery with a firearm, robbery with a weapon not a firearm, sexual assault and indecent assault / act of indecency / other sexual offences.

\*\* **Property offences** include: break and enter dwelling, break and enter non-dwelling, motor vehicle theft, steal from motor vehicle, steal from retail store, steal from dwelling, steal from person, stock theft, other theft and fraud.

For further explanation of **violent offences** and **property offences**, see page 44, paragraph 7.

**TABLE 1.1: TRENDS<sup>^</sup> IN RECORDED CRIMINAL INCIDENTS, VIOLENT AND PROPERTY OFFENCES,  
NSW STATISTICAL DIVISIONS (SDs) AND NSW, JANUARY 2005 TO DECEMBER 2009**

Statistical Division	Violent Offences*			Property Offences**		
	Annual percentage change over Jan 2008 - Dec 2009	Average annual percentage change over Jan 2005 - Dec 2009	Ratio <sup>#</sup> to NSW rate	Annual percentage change over Jan 2008 - Dec 2009	Average annual percentage change over Jan 2005 - Dec 2009	Ratio <sup>#</sup> to NSW rate
Sydney	Stable	Stable	0.9	-11.5%	-4.3%	1.0
Hunter	Stable	Stable	1.0	-8.6%	-2.7%	1.1
Illawarra	Stable	Stable	1.0	-11.6%	-7.0%	0.9
Richmond-Tweed	Stable	Stable	1.1	Stable	-2.2%	1.0
Mid-North Coast	Stable	Stable	1.1	Stable	Stable	1.0
Northern	-7.8%	Stable	1.4	Stable	Stable	1.0
North Western	Stable	-5.0%	1.9	Stable	-6.1%	1.4
Central West	Stable	2.3%	1.3	-16.5%	Stable	1.0
South Eastern	Stable	Stable	0.9	Stable	Stable	0.8
Murrumbidgee	Stable	Stable	1.2	Stable	Stable	1.0
Murray	Stable	Stable	1.0	-6.3%	Stable	1.1
Far West	Stable	Stable	2.2	Stable	-4.5%	1.2
<b>NSW</b>	<b>Stable</b>	<b>Stable</b>	<b>1.0</b>	<b>-9.5%</b>	<b>-3.8%</b>	<b>1.0</b>

<sup>^</sup> For further explanation of **trend results**, see page 44, paragraphs 5 and 6.

\* **Violent offences** include: murder, assault - domestic violence related, assault - non-domestic violence related, assault police, robbery without a weapon, robbery with a firearm, robbery with a weapon not a firearm, sexual assault and indecent assault / act of indecency / other sexual offences.

\*\* **Property offences** include: break and enter dwelling, break and enter non-dwelling, motor vehicle theft, steal from motor vehicle, steal from retail store, steal from dwelling, steal from person, stock theft, other theft and fraud.  
For further explanation of **violent offences** and **property offences**, see page 44, paragraph 7.

# For further explanation of **rate calculation populations** and the **ratio to NSW rate**, see page 44, Note 2 and paragraph 8.

**TABLE 1.2: TRENDS<sup>^</sup> IN RECORDED CRIMINAL INCIDENTS, VIOLENT AND PROPERTY OFFENCES,  
NSW METROPOLITAN STATISTICAL SUBDIVISIONS (SSDs), JANUARY 2005 TO DECEMBER 2009**

Metropolitan Statistical Subdivision	Violent Offences*			Property Offences**		
	Annual percentage change over Jan 2008 - Dec 2009	Average annual percentage change over Jan 2005 - Dec 2009	Ratio # to NSW rate	Annual percentage change over Jan 2008 - Dec 2009	Average annual percentage change over Jan 2005 - Dec 2009	Ratio # to NSW rate
Inner Sydney	-10.9%	-4.0%	2.0	-12.4%	-6.5%	2.5
Eastern Suburbs	-15.4%	-3.7%	0.7	-15.2%	-4.6%	1.1
St George-Sutherland	Stable	Stable	0.6	-10.7%	-5.6%	0.6
Canterbury-Bankstown	Stable	Stable	0.8	-11.7%	-4.0%	0.9
Fairfield-Liverpool	Stable	Stable	0.9	-11.3%	-4.1%	0.9
Outer South Western Sydney	Stable	Stable	1.3	Stable	-4.9%	0.9
Inner Western Sydney	Stable	Stable	0.7	-14.9%	-4.2%	1.0
Central Western Sydney	Stable	Stable	1.1	-12.1%	-4.6%	1.1
Outer Western Sydney	Stable	Stable	1.1	Stable	-2.4%	0.9
Blacktown	Stable	2.2%	1.4	Stable	Stable	1.2
Lower Northern Sydney	Stable	Stable	0.4	-20.5%	-5.9%	0.7
Central Northern Sydney	Stable	Stable	0.4	-12.9%	-2.9%	0.5
Northern Beaches	Stable	Stable	0.5	Stable	-5.0%	0.7
Central Coast	Stable	Stable	1.0	-13.7%	-2.2%	0.9
Newcastle	Stable	-2.6%	1.0	-9.6%	-2.9%	1.2
Wollongong	Stable	-2.1%	0.9	-15.4%	-9.1%	0.8

<sup>^</sup> For further explanation of **trend results**, see page 44, paragraphs 5 and 6.

\* **Violent offences** include: murder, assault - domestic violence related, assault - non-domestic violence related, assault police, robbery without a weapon, robbery with a firearm, robbery with a weapon not a firearm, sexual assault and indecent assault / act of indecency / other sexual offences.

\*\* **Property offences** include: break and enter dwelling, break and enter non-dwelling, motor vehicle theft, steal from motor vehicle, steal from retail store, steal from dwelling, steal from person, stock theft, other theft and fraud.  
For further explanation of **violent offences** and **property offences**, see page 44, paragraph 7.

# For further explanation of **rate calculation populations** and the **ratio to NSW rate**, see page 44, Note 2 and paragraph 8.

**TABLE 1.3: TRENDS<sup>A</sup> IN RECORDED CRIMINAL INCIDENTS, VIOLENT AND PROPERTY OFFENCES,  
NSW LOCAL GOVERNMENT AREAS (LGAs), JANUARY 2005 TO DECEMBER 2009**

NSW LGAs	Violent Offences*			Property Offences*		
	Annual percentage change	Average annual percentage change	Ratio <sup>#</sup> to NSW	Annual percentage change	Average annual percentage change	Ratio <sup>#</sup> to NSW
	Jan 2008 - Dec 2009	Jan 2005 - Dec 2009	rate	Jan 2008 - Dec 2009	Jan 2005 - Dec 2009	rate
Albury	ns	ns	1.3	-10.5	ns	1.6
Armidale Dumaresq	-13.3	ns	1.2	ns	ns	1.0
Ashfield	-30.5	-11.2	0.5	ns	-9.1	0.8
Auburn	-8.9	7.4	1.1	-11.4	-3.2	1.2
Ballina	ns	ns	0.9	-10.2	ns	1.0
Balranald	ns	ns	.	ns	ns	.
Bankstown	ns	ns	0.8	-12.9	-4.3	1.0
Bathurst Regional	ns	ns	1.4	ns	-10.2	0.9
Baulkham Hills	ns	ns	0.4	-18.1	ns	0.6
Bega Valley	ns	ns	0.8	ns	-7.5	0.8
Bellingen	ns	-10.1	0.5	ns	ns	0.7
Berrigan	ns	ns	0.5	ns	ns	0.5
Blacktown	ns	2.2	1.4	ns	ns	1.2
Bland	ns	ns	0.8	ns	ns	0.7
Blayney	ns	ns	0.7	ns	-8.1	0.5
Blue Mountains	ns	5.7	0.8	ns	-2.6	0.6
Bogan	ns	ns	.	ns	6.9	.
Bombala	ns	ns	.	ns	ns	.
Boorowa	.	.	.	ns	ns	.
Botany Bay	ns	-5.0	0.9	-15.2	-4.0	1.4
Bourke	ns	-8.9	6.1	ns	-16.7	2.4
Brewarrina	ns	ns	.	ns	-6.5	.
Broken Hill	ns	ns	1.7	-14.6	ns	1.2
Burwood	ns	ns	1.0	-16.1	-4.7	1.5
Byron	21.5	ns	1.5	ns	ns	1.6
Cabonne	43.3	ns	1.1	ns	6.0	0.7
Camden	ns	ns	0.7	23.2	-1.2	0.8
Campbelltown	ns	ns	1.6	-9.3	-5.9	1.1
Canada Bay	ns	8.9	0.5	-14.2	ns	0.7
Canterbury	ns	ns	0.7	-9.4	-3.3	0.7
Carrathool	ns	ns	.	ns	-9.8	.
Central Darling	ns	-5.2	.	ns	ns	.
Cessnock	ns	ns	1.0	-16.3	-4.9	1.0
Clarence Valley	ns	ns	0.9	ns	-2.4	1.0
Cobar	ns	ns	1.1	ns	ns	0.9
Coffs Harbour	ns	ns	1.1	ns	ns	1.1
Conargo	.	.	.	ns	ns	.
Coolamon	-51.2	ns	0.4	ns	ns	0.6
Cooma-Monaro	ns	8.7	0.9	ns	ns	0.7
Coonamble	ns	-11.9	2.0	ns	ns	2.0
Cootamundra	ns	ns	1.1	ns	ns	0.7
Corowa Shire	ns	-6.1	0.8	ns	ns	0.7
Cowra	ns	5.5	1.6	ns	9.6	1.4
Deniliquin	ns	ns	0.8	ns	ns	0.7
Dubbo	ns	-5.6	1.6	ns	-12.3	1.3
Dungog	ns	ns	0.4	42.6	9.3	0.7
Eurobodalla	ns	ns	1.2	ns	ns	1.1
Fairfield	ns	ns	0.9	-8.5	-3.7	0.9
Forbes	ns	ns	1.8	ns	ns	1.4
Gilgandra	ns	ns	1.6	ns	ns	1.3
Glen Innes Severn	ns	-9.2	1.0	ns	-8.1	0.7
Gloucester	ns	ns	0.8	ns	ns	0.5
Gosford	ns	ns	0.9	ns	ns	0.9
Goulburn Mulwaree	ns	ns	1.2	ns	-4.2	0.8
Great Lakes	ns	ns	1.2	-23.5	-8.0	0.9
Greater Hume Shire	ns	ns	0.5	ns	ns	0.7
Greater Taree	ns	ns	1.2	ns	4.8	1.2
Griffith	ns	ns	1.5	ns	-4.1	1.0
Gundagai	.	.	0.4	ns	ns	0.6
Gunnedah	ns	ns	1.4	ns	ns	1.1
Guyra	44.0	ns	1.3	ns	ns	0.6
Gwydir	-40.6	ns	0.6	ns	ns	0.5
Harden	ns	ns	0.5	ns	ns	0.4
Hawkesbury	ns	ns	0.9	ns	-2.7	0.8
Hay	ns	ns	1.1	ns	ns	0.6
Holroyd	ns	ns	1.0	-10.3	-5.8	1.0
Hornsby	ns	ns	0.4	-15.9	-5.9	0.5
Hunters Hill	ns	ns	0.4	-35.5	-8.7	0.5
Hurstville	ns	-4.7	0.6	ns	ns	0.8
Inverell	ns	ns	1.6	ns	ns	1.0
Jerilderie	.	.	.	ns	ns	.
Junee	39.4	ns	1.2	ns	ns	0.8
Kempsey	-17.2	ns	1.5	ns	-3.0	1.4
Kiama	ns	-5.3	0.5	ns	-7.9	0.6
Kogarah	ns	ns	0.6	ns	-4.3	0.6
Ku-ring-gai	ns	ns	0.2	ns	ns	0.5
Kyogle	ns	8.6	1.5	22.0	9.5	0.8
Lachlan	ns	-8.3	1.5	ns	-6.2	0.9
Lake Macquarie	ns	-2.9	0.9	ns	-2.8	1.0
Lane Cove	ns	ns	0.2	-38.6	ns	0.6

TABLE 1.3: TRENDS<sup>^</sup> IN RECORDED CRIMINAL INCIDENTS, VIOLENT AND PROPERTY OFFENCES, NSW LOCAL GOVERNMENT AREAS (LGAs), JANUARY 2005 TO DECEMBER 2009

NSW LGAs	Violent Offences*			Property Offences*		
	Annual percentage change Jan 2008 - Dec 2009	Average annual percentage change Jan 2005 - Dec 2009	Ratio <sup>#</sup> to NSW rate	Annual percentage change Jan 2008 - Dec 2009	Average annual percentage change Jan 2005 - Dec 2009	Ratio <sup>#</sup> to NSW rate
Leeton	ns	ns	1.1	ns	ns	1.1
Leichhardt	ns	ns	0.7	-5.9	-6.5	1.1
Lismore	-20.4	ns	1.4	ns	-10.8	0.9
Lithgow	ns	ns	1.5	ns	ns	0.9
Liverpool	9.3	ns	1.0	-13.8	-4.5	1.0
Liverpool Plains	ns	ns	1.0	45.1	ns	0.5
Lockhart	ns	ns	0.7	ns	ns	0.5
Lord Howe Island	.	.	.	.	.	.
Maitland	ns	2.8	1.1	-16.4	ns	1.1
Manly	ns	ns	0.9	-21.0	-7.9	1.0
Marrickville	ns	-8.1	1.0	-15.8	-6.7	1.3
Mid-Western Regional	ns	ns	1.2	24.4	2.9	1.0
Moree Plains	-7.2	ns	3.3	ns	ns	2.1
Mosman	ns	ns	0.3	-28.4	-8.4	0.6
Murray	ns	ns	0.6	ns	ns	0.8
Murrumbidgee	ns	ns	.	ns	-11.3	.
Muswellbrook	ns	ns	1.4	ns	ns	1.3
Nambucca	ns	ns	1.4	ns	ns	1.0
Narrabri	-19.2	-5.1	1.2	-12.7	ns	1.0
Narrandera	ns	ns	1.5	31.6	ns	1.6
Narromine	ns	ns	1.4	ns	ns	1.3
Newcastle	ns	-4.3	1.3	-15.0	-4.8	1.5
North Sydney	ns	ns	0.5	-15.2	-7.6	0.9
Oberon	ns	ns	1.0	ns	-8.3	0.7
Orange	ns	ns	1.5	-27.5	ns	1.2
Palerang	ns	ns	0.7	ns	5.5	0.7
Parkes	ns	9.9	1.4	-24.6	5.9	0.9
Parramatta	ns	ns	1.1	-13.2	-4.6	1.2
Penrith	ns	ns	1.2	ns	-2.3	1.0
Pittwater	ns	ns	0.5	ns	-7.1	0.7
Port Macquarie-Hastings	ns	8.8	1.1	17.0	ns	0.9
Port Stephens	ns	ns	0.9	ns	ns	1.2
Queanbeyan	ns	-6.2	0.7	ns	-4.4	0.7
Randwick	-11.9	ns	0.8	-15.1	-4.4	1.0
Richmond Valley	-18.0	ns	1.6	ns	ns	0.9
Rockdale	ns	2.0	0.7	-9.5	-3.5	0.6
Ryde	ns	ns	0.5	-15.3	-4.8	0.6
Shellharbour	ns	-4.2	0.8	-15.9	-8.6	0.8
Shoalhaven	ns	ns	1.2	ns	ns	1.0
Singleton	ns	ns	0.8	ns	5.9	1.0
Snowy River	ns	ns	0.8	ns	ns	1.3
Strathfield	ns	3.4	0.9	-19.3	ns	1.1
Sutherland Shire	ns	2.2	0.6	-12.2	-8.2	0.6
Sydney	-11.0	-3.5	3.0	-12.1	-6.7	3.7
Tamworth Regional	ns	5.0	1.4	ns	ns	1.0
Temora	ns	ns	0.8	ns	ns	0.7
Tenterfield	ns	ns	1.4	ns	ns	1.2
Tumbarumba	.	.	0.4	ns	ns	0.6
Tumut Shire	-27.7	ns	0.9	ns	-9.6	0.6
Tweed	ns	3.7	0.8	ns	ns	1.0
Unincorporated Far West	.	.	.	ns	-12.8	.
Upper Hunter Shire	ns	ns	0.6	ns	ns	0.6
Upper Lachlan Shire	ns	ns	0.4	ns	ns	0.5
Uralla	ns	ns	0.8	-24.6	-11.1	0.5
Urana	.	.	.	ns	ns	.
Wagga Wagga	ns	ns	1.2	-16.7	ns	1.3
Wakool	ns	ns	0.6	ns	ns	0.4
Walcha	ns	ns	0.8	ns	ns	0.5
Walgett	ns	-7.3	4.6	ns	ns	2.1
Warren	ns	ns	.	ns	ns	.
Warringah	ns	ns	0.5	ns	-2.4	0.6
Warrumbungle Shire	ns	ns	1.1	ns	ns	1.0
Waverley	-20.2	-4.8	0.8	-16.4	-5.1	1.5
Weddin	ns	ns	0.4	ns	-9.2	0.4
Wellington	15.6	ns	1.8	15.3	ns	1.2
Wentworth	13.7	ns	2.2	ns	ns	1.5
Willoughby	ns	ns	0.4	-19.3	ns	1.0
Wingecarribee	ns	ns	0.8	ns	-4.3	0.6
Wollondilly	ns	ns	0.7	ns	-4.0	0.6
Wollongong	ns	ns	1.0	-15.3	-9.3	0.9
Woollahra	ns	ns	0.5	-13.4	-4.4	1.1
Wyong	ns	ns	1.2	-16.1	-3.8	1.0
Yass Valley	ns	ns	0.8	ns	ns	0.7
Young	ns	ns	1.4	ns	ns	0.8
<b>NSW</b>	<b>Stable</b>	<b>Stable</b>	<b>1.0</b>	<b>-0.1</b>	<b>0.0</b>	<b>1.0</b>

<sup>^</sup> For further explanation of **trend results**, see page 44, paragraphs 5 and 6.\* For further explanation of **violent offences** and **property offences**, see page 44, paragraph 7.# For further explanation of **rate calculation populations** and the **ratio to NSW rate**, see page 44, Note 2 and paragraph 8.

Sydney LGA can be considered a special case since the population used to calculate the rate is much lower than the population using the area for work and entertainment. This will be reflected in higher incident rates.



---

**SECTION 2:**  
**OVERVIEW OF TRENDS**  
**IN RECORDED CRIME**  
**BY OFFENCE TYPE**

---

**TABLE 2.1: TRENDS<sup>^</sup> IN RECORDED CRIMINAL INCIDENTS FOR MAJOR OFFENCES,  
NSW, JANUARY 2005 TO DECEMBER 2009**

<i>Offence category</i>	<i>Trend result and annual percentage change over Jan 2008 - Dec 2009</i>	<i>Trend result and average annual percentage change over Jan 2005 - Dec 2009</i>
Murder*	Stable	Stable
Assault - domestic violence related	Stable	Stable
Assault - non-domestic violence related	Stable	Stable
Sexual assault	Stable	<b>Up by 2.6%</b>
Indecent assault, act of indecency and other sexual offences	Stable	Stable
Robbery without a weapon	Down by 15.7%	Down by 6.3%
Robbery with a firearm	Stable	Stable
Robbery with a weapon not a firearm	Down by 10.6%	Down by 10.5%
Break and enter dwelling	Down by 6.4%	Down by 4.0%
Break and enter non-dwelling	Down by 16.3%	Down by 8.7%
Motor vehicle theft	Down by 8.5%	Down by 6.2%
Steal from motor vehicle	Down by 18.8%	Stable
Steal from retail store	Stable	<b>Up by 2.8%</b>
Steal from dwelling	Stable	Down by 3.5%
Steal from person	Down by 4.8%	Down by 5.5%
Fraud	Down by 10.7%	Stable
Malicious damage to property	Stable	Stable

<sup>^</sup> For further explanation of **trend results**, see page 44, paragraphs 5 and 6.

\* For murder, the trend test is applied to the monthly number of recorded victims rather than criminal incidents.



**TABLE 2.2: PERIODIC TRENDS<sup>^</sup> IN RECORDED CRIMINAL INCIDENTS FOR MAJOR OFFENCES, NSW, JANUARY 2004 TO DECEMBER 2009**

<b>Offence category</b>	<b>Trend result and annual percentage change</b>				
	<b>Jan 2004 - Dec 2005</b>	<b>Jan 2005 - Dec 2006</b>	<b>Jan 2006 - Dec 2007</b>	<b>Jan 2007 - Dec 2008</b>	<b>Jan 2008 - Dec 2009</b>
Murder*	Stable	Stable	Stable	Stable	Stable
Assault - domestic violence related	Stable	Stable	Stable	Stable	Stable
Assault - non-domestic violence related	Stable	Stable	Stable	Stable	Stable
Sexual assault	Stable	Stable	4.1%	Stable	Stable
Indecent assault, act of indecency and other sexual offences	Stable	Stable	Stable	Stable	Stable
Robbery without a weapon	Stable	Stable	Stable	Stable	-15.7%
Robbery with a firearm	-26.4%	Stable	Stable	-30.0%	Stable
Robbery with a weapon not a firearm	Stable	Stable	Stable	-17.9%	-10.6%
Break and enter dwelling	-10.8%	-3.8%	Stable	-5.0%	-6.4%
Break and enter non-dwelling	-7.3%	-1.8%	-10.1%	-5.7%	-16.3%
Motor vehicle theft	-12.3%	-2.6%	-5.4%	-8.2%	-8.5%
Steal from motor vehicle	-8.7%	Stable	6.7%	-6.8%	-18.8%
Steal from retail store	Stable	Stable	Stable	8.5%	Stable
Steal from dwelling	Stable	Stable	Stable	Stable	Stable
Steal from person	-12.3%	Stable	Stable	-11.3%	-4.8%
Fraud	5.0%	Stable	Stable	17.7%	-10.7%
Malicious damage to property	8.8%	5.4%	Stable	2.1%	Stable

<sup>^</sup> For further explanation of **trend results**, see page 44, paragraphs 5 and 6.

\* For murder, the trend test is applied to the monthly number of recorded victims rather than criminal incidents.

**TABLE 2.3: NUMBER AND TRENDS<sup>^</sup> IN RECORDED CRIMINAL INCIDENTS FOR ALL OFFENCES  
NSW, JANUARY 2008 TO DECEMBER 2009**

Offence Category	Number of recorded criminal incidents		Trend <sup>^</sup> over 24-month period		
	Jan 2008 - Dec 2008	Jan 2009 - Dec 2009	Trend test result	Percentage change	
Homicide	Murder*	79	80	Stable	
	Attempted murder	51	43	Stable	
	Murder accessory, conspiracy	6	7	.	
	Manslaughter *	14	9	.	
Assault	Domestic violence related assault	25,533	25,964	Stable	
	Non-domestic violence related assault	42,697	39,985	Stable	
	Assault Police	2,878	2,726	Stable	
Sexual offences	Sexual assault	4,072	4,311	Stable	
	Indecent assault, act of indecency and other sexual offences	5,131	5,240	Stable	
Abduction and kidnapping		395	324	Stable	
Robbery	Robbery without a weapon	4,446	3,750	Down	-15.7%
	Robbery with a firearm	375	463	Stable	
	Robbery with a weapon not a firearm	1,856	1,660	Down	-10.6%
Blackmail and extortion		86	157	Stable	
Harassment, threatening behaviour and private nuisance		24,774	26,470	Up	6.8%
Other offences against the person		1,458	1,437	Stable	
Theft	Break and enter dwelling	44,239	41,410	Down	-6.4%
	Break and enter non-dwelling	22,923	19,179	Down	-16.3%
	Receiving or handling stolen goods	5,969	5,035	Down	-15.6%
	Motor vehicle theft	24,405	22,322	Down	-8.5%
	Steal from motor vehicle	57,814	46,961	Down	-18.8%
	Steal from retail store	19,894	20,514	Stable	
	Steal from dwelling	21,351	21,225	Stable	
	Steal from person	10,333	9,838	Down	-4.8%
	Stock theft	553	508	Stable	
	Fraud	38,856	34,694	Down	-10.7%
Other theft	37,633	34,941	Down	-7.2%	
Arson		7,293	7,195	Stable	
Malicious damage to property		109,371	101,236	Stable	
Drug offences	Possession and/or use of cocaine	486	753	Up	54.9%
	Possession and/or use of narcotics	826	1,062	Up	28.6%
	Possession and/or use of cannabis	14,841	16,695	Up	12.5%
	Possession and/or use of amphetamines	2,698	2,108	Down	-21.9%
	Possession and/or use of ecstasy	1,792	2,388	Stable	
	Possession and/or use of other drugs	1,713	2,092	Up	22.1%
	Dealing, trafficking in cocaine	146	202	Stable	
	Dealing, trafficking in narcotics	280	376	Stable	
	Dealing, trafficking in cannabis	547	478	Stable	
	Dealing, trafficking in amphetamines	844	515	Down	-39.0%
	Dealing, trafficking in ecstasy	442	503	Stable	
	Dealing, trafficking in other drugs	109	145	Stable	
	Cultivating cannabis	1,195	1,172	Stable	
	Manufacture drug	52	63	Stable	
Importing drugs	26	24	Stable		
Other drug offences	3,180	3,409	Up	7.2%	
Prohibited and regulated weapons offences		8,716	8,012	Down	-8.1%
Disorderly conduct	Trespass	9,223	8,599	Stable	
	Offensive conduct	8,767	8,998	Stable	
	Offensive language	6,697	6,724	Stable	
	Criminal intent	1,519	1,485	Stable	
Betting and gaming offences		311	329	Stable	
Liquor offences		18,047	18,052	Stable	
Pornography offences		201	267	Up	32.8%
Prostitution offences		209	176	Stable	
Against justice procedures	Escape custody	217	187	Stable	
	Breach Apprehended Violence Order	11,535	11,815	Stable	
	Breach bail conditions	23,653	24,823	Up	4.9%
	Fail to appear	878	1,002	Stable	
	Resist or hinder officer	7,835	7,594	Stable	
	Other offences against justice procedures	690	592	Down	-14.2%
Transport regulatory offences		39,508	42,605	Up	7.8%
Other offences		15,718	15,035	Stable	

<sup>^</sup> For further explanation of **trend results**, see page 44, paragraphs 5 and 6.

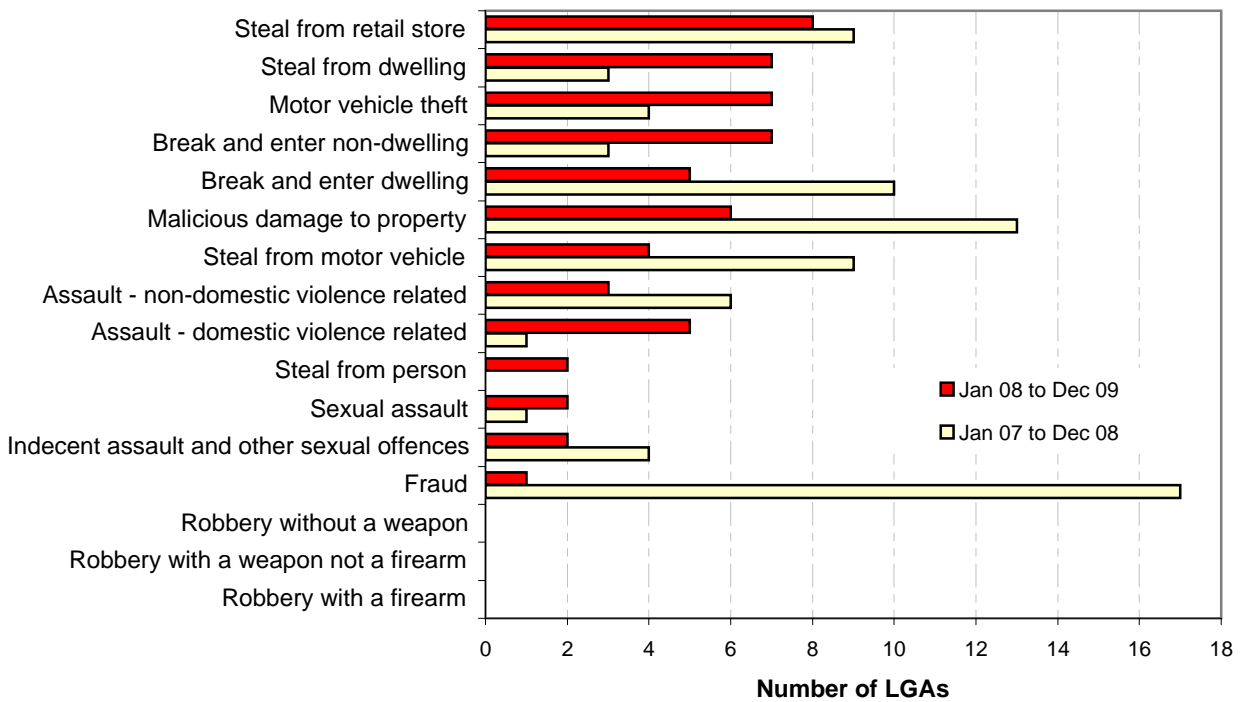
\* For murder and manslaughter incidents, the trend test is applied to the monthly number of recorded victims rather than criminal incidents.

**TABLE 2.4: NUMBER AND OUTCOME<sup>^</sup> OF 24-MONTH TREND TESTS FOR MAJOR OFFENCES, NSW LOCAL GOVERNMENT AREAS (LGAs), MARCH 2004 TO DECEMBER 2009**

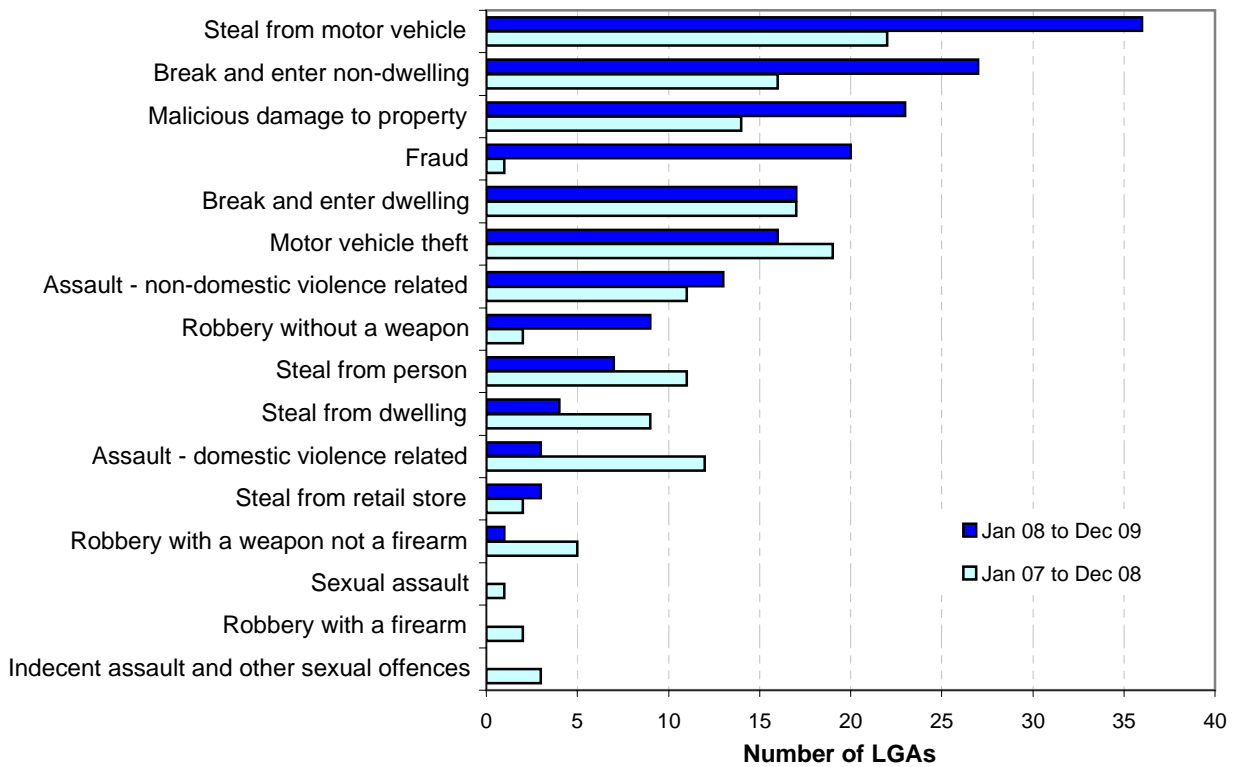
	<i>Final month for 24-month trend test</i>	<i>Number of LGAs</i>	<i>Number of trend tests</i>	<i>Stable trends (%)</i>	<i>Downward trends (%)</i>	<i>Upward trends (%)</i>
<b>2004</b>	March	174	1,428	80.5	15.6	3.9
	June	174	1,421	80.1	18.2	1.7
	September	174	1,415	76.7	21.6	1.8
	<b>December</b>	<b>173</b>	<b>1,397</b>	<b>78.5</b>	<b>18.2</b>	<b>3.4</b>
<b>2005</b>	March	167	1,371	79.2	17.0	3.8
	June	167	1,358	80.6	15.4	4.1
	September	167	1,364	79.8	15.8	4.4
	<b>December</b>	<b>167</b>	<b>1,357</b>	<b>83.3</b>	<b>11.9</b>	<b>4.9</b>
<b>2006</b>	March	167	1,464	85.9	7.4	6.7
	June	154	1,432	87.7	7.8	4.5
	September	154	1,440	86.2	9.6	4.2
	<b>December</b>	<b>154</b>	<b>1,442</b>	<b>86.6</b>	<b>7.8</b>	<b>5.6</b>
<b>2007</b>	March	154	1,450	86.0	6.8	7.2
	June	154	1,447	88.3	6.8	5.0
	September	154	1,440	84.9	10.4	4.7
	<b>December</b>	<b>154</b>	<b>1,446</b>	<b>87.3</b>	<b>7.8</b>	<b>4.9</b>
<b>2008</b>	March	154	1,429	88.0	6.3	5.7
	June	154	1,430	86.6	8.3	5.2
	September	154	1,422	82.3	12.5	5.2
	<b>December</b>	<b>154</b>	<b>1,422</b>	<b>84.0</b>	<b>10.3</b>	<b>5.6</b>
<b>2009</b>	March	154	1,408	84.6	9.9	5.5
	June	154	1,412	83.9	11.5	4.5
	September	154	1,404	81.4	14.2	4.4
	<b>December</b>	<b>154</b>	<b>1,414</b>	<b>83.2</b>	<b>12.7</b>	<b>4.1</b>

<sup>^</sup> This table summarises the aggregate outcomes of statistical tests for significant upward or downward trends in the number of recorded criminal incidents in major offence categories over a 24-month period across all NSW LGAs with a population of 3,000 or more. The trend test used is Kendall's rank-order correlation test. A trend test was not performed if there were fewer than 20 incidents in either of the two years for the period in question, hence no trend tests for **murder** were calculated for this table. Tests ending in 2004 and 2005 were carried out on 15 major offence categories (during this period **assault** was a single offence category). Tests ending in 2006 and later years were carried out on 16 major offence categories (**assault** incidents separated into **domestic violence related** and **non-domestic violence related**). **Assault Police** incidents have been recorded separately from the two major assault series from 2008 onwards.

**FIGURE 2.1A: NUMBER OF NSW LGAs WITH SIGNIFICANT UPWARD TRENDS<sup>^</sup>, MAJOR OFFENCES, JANUARY 2007 TO DECEMBER 2008 AND JANUARY 2008 TO DECEMBER 2009**



**FIGURE 2.1B: NUMBER OF NSW LGAs WITH SIGNIFICANT DOWNWARD TRENDS<sup>^</sup>, MAJOR OFFENCES, JANUARY 2007 TO DECEMBER 2008 AND JANUARY 2008 TO DECEMBER 2009**



<sup>^</sup> For further explanation of **trend results**, see page 44, paragraphs 5 and 6.

---

**SECTION 3:**

**TRENDS, RATE COMPARISONS AND  
RECORDED CRIMINAL INCIDENTS  
FOR MAJOR OFFENCES  
NSW REGIONS AND LGAS  
2008 AND 2009**

---

**TABLE 3.1A: TRENDS<sup>^</sup> IN RECORDED CRIMINAL INCIDENTS FOR MAJOR OFFENCES, NSW SDs, JANUARY 2008 TO DECEMBER 2009**

Statistical Division	Murder*	Assault - domestic violence related	Assault - non-domestic violence related	Sexual assault	Indecent assault, act of indecency and other sexual offences	Robbery without a weapon	Robbery with a firearm	Robbery with a weapon not a firearm	Break and enter dwelling	Break and enter non-dwelling	Motor vehicle theft	Steal from motor vehicle	Steal from retail store	Steal from dwelling	Steal from person	Fraud	Malicious damage to property
Sydney	ns	ns	-8.2	12.2	ns	-17.2	ns	-10.9	-6.7	-19.2	-12.4	-23.5	ns	ns	-5.4	-10.1	-9.1
Hunter	.	ns	ns	ns	ns	ns	.	ns	ns	-12.9	ns	-12.6	11.9	ns	ns	-14.0	ns
Illawarra	.	ns	ns	ns	ns	ns	.	ns	-15.2	-37.3	ns	-13.2	20.2	ns	ns	-25.7	ns
Richmond-Tweed	.	ns	ns	ns	ns	ns	.	ns	ns	ns	ns	ns	ns	ns	ns	ns	ns
Mid-North Coast	.	ns	ns	ns	ns	ns	.	ns	ns	-10.6	32.9	ns	ns	ns	ns	ns	ns
Northern	.	ns	-11.2	ns	-19.6	-26.0	.	.	ns	ns	ns	ns	ns	ns	ns	-17.4	ns
North Western	.	ns	ns	ns	ns	ns	.	.	23.1	ns	ns	10.3	ns	ns	ns	ns	ns
Central West	.	ns	ns	ns	ns	ns	.	.	ns	-23.0	ns	-31.7	ns	ns	ns	ns	ns
South Eastern	.	ns	ns	ns	ns	ns	.	.	ns	ns	ns	ns	ns	ns	ns	ns	7.0
Murrumbidgee	.	ns	ns	ns	ns	ns	.	.	ns	ns	ns	ns	ns	ns	-14.1	ns	ns
Murray	.	ns	ns	ns	ns	.	.	.	ns	ns	ns	-14.5	ns	ns	ns	-20.1	ns
Far West	.	ns	12.5	ns	ns	.	.	.	ns	ns	ns	-33.8	ns	28.5	.	ns	-15.8
<b>NSW</b>	<b>ns</b>	<b>ns</b>	<b>ns</b>	<b>ns</b>	<b>ns</b>	<b>-15.7</b>	<b>ns</b>	<b>-10.6</b>	<b>-6.4</b>	<b>-16.3</b>	<b>-8.5</b>	<b>-18.8</b>	<b>ns</b>	<b>ns</b>	<b>-4.8</b>	<b>-10.7</b>	<b>ns</b>

<sup>^</sup> For further explanation of **trend results**, see page 44, paragraphs 5 and 6.

\* The trend test for Sydney and NSW on the offence of murder is for the number of victims, not incidents.

**TABLE 3.1B: RATIO TO NSW RATE<sup>^</sup> OF RECORDED CRIMINAL INCIDENTS PER 100,000 POPULATION, MAJOR OFFENCES, NSW SDs, 2009**

Statistical Division	Murder*	Assault - domestic violence related	Assault - non-domestic violence related	Sexual assault	Indecent assault, act of indecency and other sexual offences	Robbery without a weapon	Robbery with a firearm	Robbery with a weapon not a firearm	Break and enter dwelling	Break and enter non-dwelling	Motor vehicle theft	Steal from motor vehicle	Steal from retail store	Steal from dwelling	Steal from person	Fraud	Malicious damage to property
Sydney	1.0	0.9	0.9	0.8	0.9	1.3	1.5	1.3	0.9	0.7	1.0	1.0	1.0	0.8	1.3	1.2	0.9
Hunter	0.8	1.1	1.1	1.2	1.0	0.6	0.1	0.7	1.1	1.7	1.3	1.2	1.0	1.3	0.6	0.7	1.3
Illawarra	0.4	1.0	1.0	1.2	0.9	0.6	0.3	0.5	0.9	0.9	0.9	0.8	1.1	1.0	0.6	0.6	1.1
Richmond-Tweed	1.5	1.1	1.2	1.5	1.2	0.5	0.1	0.3	0.8	1.5	0.7	1.0	1.0	1.5	0.7	0.6	1.0
Mid-North Coast	1.1	1.2	1.1	1.5	1.2	0.4	0.2	0.5	1.2	1.7	1.1	1.0	0.8	1.5	0.5	0.5	1.1
Northern	1.9	1.6	1.4	1.7	1.3	0.4	0.2	0.2	1.3	1.7	0.7	0.9	1.0	1.6	0.4	0.5	1.4
North Western	1.5	2.3	1.9	1.9	2.2	0.4	0.0	0.4	1.9	2.1	1.2	1.3	1.0	1.9	0.3	0.7	1.7
Central West	1.0	1.4	1.4	1.5	1.3	0.4	0.0	0.3	1.2	1.4	0.7	0.9	0.8	1.6	0.4	0.5	1.5
South Eastern	0.4	0.9	0.9	1.1	1.2	0.2	0.0	0.3	0.7	1.2	0.5	0.8	0.6	1.1	0.3	0.6	1.1
Murrumbidgee	1.7	1.3	1.2	1.2	1.3	0.3	0.0	0.2	1.1	1.8	0.8	1.0	0.8	1.7	0.4	0.5	1.3
Murray	1.5	1.2	1.0	1.3	1.2	0.3	0.1	0.2	1.3	1.9	0.9	1.1	0.9	1.7	0.4	0.5	1.3
Far West	0.0	3.4	1.7	1.6	2.1	0.2	0.0	0.0	2.1	1.5	0.7	0.9	0.5	2.7	0.3	0.4	1.6
<b>NSW</b>	<b>1.0</b>	<b>1.0</b>	<b>1.0</b>	<b>1.0</b>	<b>1.0</b>	<b>1.0</b>	<b>1.0</b>	<b>1.0</b>	<b>1.0</b>	<b>1.0</b>	<b>1.0</b>	<b>1.0</b>	<b>1.0</b>	<b>1.0</b>	<b>1.0</b>	<b>1.0</b>	<b>1.0</b>

<sup>^</sup> For further explanation of **rate calculation populations** and **ratio to NSW rate**, see page 44, Note 2 and paragraph 8.

\* The rate calculations on the offence of murder is for the number of victims, not incidents.

**TABLE 3.1C: NUMBER OF RECORDED CRIMINAL INCIDENTS FOR MAJOR OFFENCES, NSW SDs, 2009**

<b>Statistical Division 2009</b>	<b>Murder*</b>	<b>Assault - domestic violence related</b>	<b>Assault - non-domestic violence related</b>	<b>Sexual assault</b>	<b>Indecent assault, act of indecency and other sexual offences</b>	<b>Robbery without a weapon</b>	<b>Robbery with a firearm</b>	<b>Robbery with a weapon not a firearm</b>	<b>Break and enter dwelling</b>	<b>Break and enter non-dwelling</b>	<b>Motor vehicle theft</b>	<b>Steal from motor vehicle</b>	<b>Steal from retail store</b>	<b>Steal from dwelling</b>	<b>Steal from person</b>	<b>Fraud</b>	<b>Malicious damage to property</b>
Sydney	50	14,233	22,178	2,141	2,916	3,103	440	1,392	24,475	8,365	14,409	29,551	13,523	10,170	8,077	27,218	54,666
Hunter	6	2,534	3,849	470	490	215	6	106	4,221	2,960	2,718	5,154	1,830	2,538	517	2,189	11,493
Illawarra	2	1,548	2,460	305	296	128	8	54	2,290	1,037	1,171	2,332	1,394	1,350	329	1,162	6,777
Richmond-Tweed	4	996	1,572	217	219	68	2	15	1,167	952	561	1,519	693	1,076	222	741	3,526
Mid-North Coast	4	1,351	1,991	280	277	65	4	34	2,129	1,415	1,086	2,003	692	1,351	208	784	5,013
Northern	4	1,059	1,506	187	181	37	2	8	1,397	873	428	1,096	535	871	92	418	3,605
North Western	2	1,019	1,257	137	189	24	0	12	1,302	677	442	1,047	350	681	52	419	2,958
Central West	2	949	1,425	163	179	39	0	14	1,304	698	398	1,135	418	863	89	406	3,907
South Eastern	1	739	1,143	149	190	23	0	13	934	720	355	1,125	355	720	93	600	3,409
Murrumbidgee	3	733	1,072	114	150	26	0	7	1,020	758	379	1,001	382	804	79	415	2,995
Murray	2	518	650	92	107	19	1	5	882	626	327	852	309	616	70	290	2,243
Far West	0	284	225	23	36	3	0	0	289	94	48	143	33	185	9	47	515
<b>NSW</b>	<b>80</b>	<b>25,964</b>	<b>39,985</b>	<b>4,311</b>	<b>5,240</b>	<b>3,750</b>	<b>463</b>	<b>1,660</b>	<b>41,410</b>	<b>19,179</b>	<b>22,322</b>	<b>46,961</b>	<b>20,514</b>	<b>21,225</b>	<b>9,838</b>	<b>34,694</b>	<b>101,236</b>

\* Number of victims.

**TABLE 3.1D: NUMBER OF RECORDED CRIMINAL INCIDENTS FOR MAJOR OFFENCES, NSW SDs, 2008**

<b>Statistical Division 2008</b>	<b>Murder*</b>	<b>Assault - domestic violence related</b>	<b>Assault - non-domestic violence related</b>	<b>Sexual assault</b>	<b>Indecent assault, act of indecency and other sexual offences</b>	<b>Robbery without a weapon</b>	<b>Robbery with a firearm</b>	<b>Robbery with a weapon not a firearm</b>	<b>Break and enter dwelling</b>	<b>Break and enter non-dwelling</b>	<b>Motor vehicle theft</b>	<b>Steal from motor vehicle</b>	<b>Steal from retail store</b>	<b>Steal from dwelling</b>	<b>Steal from person</b>	<b>Fraud</b>	<b>Malicious damage to property</b>
Sydney	42	13,665	24,170	1,908	2,710	3,748	332	1,562	26,242	10,356	16,457	38,647	13,441	10,216	8,537	30,265	60,113
Hunter	2	2,584	3,915	520	516	200	21	138	4,683	3,397	2,734	5,899	1,636	2,693	547	2,544	12,147
Illawarra	1	1,636	2,499	262	268	156	4	53	2,699	1,653	1,257	2,687	1,160	1,342	321	1,563	7,233
Richmond-Tweed	3	1,007	1,693	210	245	79	10	18	1,291	1,062	603	1,398	669	1,095	249	753	3,845
Mid-North Coast	2	1,443	2,049	243	251	63	3	28	1,854	1,583	817	1,837	717	1,327	191	779	5,135
Northern	4	1,068	1,695	200	225	50	0	10	1,557	855	454	1,197	490	895	85	506	3,964
North Western	4	1,045	1,322	124	191	26	2	11	1,058	704	380	949	396	677	64	407	3,406
Central West	9	882	1,353	178	212	41	1	11	1,538	907	504	1,662	419	875	99	489	4,117
South Eastern	10	735	1,188	147	194	25	0	8	963	815	371	1,073	345	662	75	600	3,185
Murrumbidgee	0	689	1,136	146	151	25	1	8	1,056	785	369	1,250	359	779	92	507	3,291
Murray	0	507	719	89	129	31	1	8	960	674	382	996	228	646	68	363	2,216
Far West	2	267	200	29	26	2	0	1	338	129	76	216	34	144	5	75	612
<b>NSW</b>	<b>79</b>	<b>25,533</b>	<b>42,697</b>	<b>4,072</b>	<b>5,131</b>	<b>4,446</b>	<b>375</b>	<b>1,856</b>	<b>44,239</b>	<b>22,923</b>	<b>24,405</b>	<b>57,814</b>	<b>19,894</b>	<b>21,351</b>	<b>10,333</b>	<b>38,856</b>	<b>109,371</b>

\* Number of victims.

**TABLE 3.2A: TRENDS<sup>^</sup> IN RECORDED CRIMINAL INCIDENTS FOR MAJOR OFFENCES, NSW METROPOLITAN SSDs, JANUARY 2008 TO DECEMBER 2009**

Metropolitan Statistical Subdivision	Murder*	Assault - domestic violence related	Assault - non-domestic violence related	Sexual assault	Indecent assault, act of indecency and other sexual offences	Robbery without a weapon	Robbery with a firearm	Robbery with a weapon not a firearm	Break and enter dwelling	Break and enter non-dwelling	Motor vehicle theft	Steal from motor vehicle	Steal from retail store	Steal from dwelling	Steal from person	Fraud	Malicious damage to property
Inner Sydney	.	ns	-10.9	ns	ns	-25.4	ns	ns	-7.4	-20.8	-18.1	-25.2	ns	-4.8	ns	-6.4	-12.0
Eastern Suburbs	.	-13.7	-19.7	ns	ns	-36.5	.	-41.1	-16.6	ns	-29.3	-24.0	ns	ns	ns	-15.1	-17.6
St George-Sutherland	.	ns	ns	ns	ns	-21.2	ns	ns	ns	-33.8	ns	-26.1	14.7	ns	ns	ns	ns
Canterbury-Bankstown	.	10.5	-11.6	ns	ns	ns	ns	ns	ns	-31.2	-11.1	-25.3	ns	ns	-10.1	ns	-13.6
Fairfield-Liverpool	.	7.6	ns	ns	ns	ns	96.6	ns	ns	-18.7	ns	-25.0	ns	ns	ns	-15.1	ns
Outer South Western Sydney	.	ns	ns	ns	ns	ns	ns	15.0	-20.6	ns	-16.2	ns	22.7	ns	ns	-20.7	ns
Inner Western Sydney	.	ns	ns	ns	ns	ns	.	ns	ns	-20.6	ns	-25.7	ns	ns	-28.6	ns	ns
Central Western Sydney	.	ns	ns	ns	ns	ns	ns	ns	ns	-17.0	-20.1	-30.1	ns	25.4	-19.0	ns	-14.3
Outer Western Sydney	.	ns	ns	31.6	ns	ns	.	ns	ns	ns	ns	ns	ns	ns	ns	ns	ns
Blacktown	.	ns	ns	ns	ns	ns	.	ns	ns	ns	ns	ns	ns	ns	ns	ns	ns
Lower Northern Sydney	.	ns	ns	ns	ns	-25.7	.	ns	-34.2	ns	-30.9	-44.8	ns	-15.6	-20.6	ns	ns
Central Northern Sydney	.	ns	ns	ns	ns	-26.6	.	ns	ns	-11.5	-19.1	-24.8	ns	ns	-22.4	-10.8	ns
Northern Beaches	.	ns	ns	ns	ns	ns	.	.	ns	-33.8	ns	ns	17.2	ns	29.7	ns	ns
Central Coast	.	ns	ns	ns	ns	ns	.	ns	-20.8	-16.8	ns	-18.3	ns	ns	ns	-29.9	-12.2
Newcastle	.	ns	ns	ns	ns	ns	.	ns	ns	-14.8	ns	-15.2	14.2	ns	ns	-13.3	ns
Wollongong	.	ns	ns	ns	ns	ns	.	ns	-20.8	-42.2	ns	-25.5	20.9	ns	ns	-24.0	ns

<sup>^</sup> For further explanation of **trend results**, see page 44, paragraphs 5 and 6.

\* The trend test for Sydney and NSW on the offence of murder is for the number of victims, not incidents.

**TABLE 3.2B: RATIO TO NSW RATE<sup>^</sup> OF RECORDED CRIMINAL INCIDENTS PER 100,000 POPULATION, MAJOR OFFENCES, NSW METROPOLITAN SSDs, 2009**

Metropolitan Statistical Subdivision	Murder*	Assault - domestic violence related	Assault - non-domestic violence related	Sexual assault	Indecent assault, act of indecency and other sexual offences	Robbery without a weapon	Robbery with a firearm	Robbery with a weapon not a firearm	Break and enter dwelling	Break and enter non-dwelling	Motor vehicle theft	Steal from motor vehicle	Steal from retail store	Steal from dwelling	Steal from person	Fraud	Malicious damage to property
Inner Sydney	1.5	1.1	2.4	1.3	1.4	4.6	3.6	3.4	1.2	1.5	1.4	2.7	2.4	1.3	8.1	3.1	1.2
Eastern Suburbs	1.0	0.6	0.8	0.5	0.9	1.1	1.3	0.9	1.1	0.5	0.9	1.0	1.2	1.0	1.7	1.5	0.7
St George-Sutherland	0.2	0.6	0.6	0.4	0.6	1.0	0.8	0.9	0.5	0.4	0.7	0.6	0.8	0.5	0.6	0.8	0.7
Canterbury-Bankstown	1.6	0.8	0.6	0.5	0.7	1.3	2.4	1.7	0.8	0.5	1.6	0.9	0.7	0.5	0.6	1.4	0.6
Fairfield-Liverpool	2.1	1.0	0.8	0.9	0.8	1.2	2.3	2.0	1.1	0.7	1.3	0.9	0.9	0.5	0.7	1.1	0.7
Outer South Western Sydney	0.7	1.5	1.1	1.3	1.2	1.3	1.3	1.3	1.3	0.8	1.3	0.9	0.8	1.1	0.6	0.8	1.4
Inner Western Sydney	1.9	0.5	0.6	0.5	0.9	1.6	2.5	1.8	0.9	0.5	1.1	1.0	0.9	0.7	1.0	1.5	0.6
Central Western Sydney	1.6	1.1	0.9	0.8	0.9	1.8	3.4	2.5	1.2	0.7	1.4	1.0	1.2	0.8	1.1	1.7	0.8
Outer Western Sydney	0.0	1.1	1.0	1.1	1.2	0.9	1.0	0.9	0.8	0.8	1.2	0.9	0.9	0.8	0.5	0.9	1.2
Blacktown	0.6	1.6	1.2	1.3	1.1	1.7	0.7	1.4	1.6	0.6	1.5	1.0	1.4	0.9	0.9	1.7	1.3
Lower Northern Sydney	1.1	0.3	0.4	0.4	0.6	0.5	0.8	0.6	0.7	0.7	0.4	0.6	1.2	0.5	0.6	1.2	0.5
Central Northern Sydney	1.2	0.4	0.3	0.4	0.6	0.3	0.3	0.5	0.7	0.5	0.3	0.5	0.5	0.5	0.3	0.6	0.5
Northern Beaches	0.0	0.4	0.6	0.4	0.8	0.5	0.3	0.3	0.5	0.5	0.4	0.9	0.7	0.8	0.7	0.7	0.8
Central Coast	0.3	1.1	1.0	1.3	1.0	0.6	0.4	0.5	0.9	1.0	1.0	1.2	1.1	1.1	0.6	0.5	1.1
Newcastle	0.7	1.1	1.1	1.2	1.0	0.7	0.1	0.8	1.2	1.7	1.4	1.3	1.1	1.3	0.6	0.7	1.3
Wollongong	0.3	0.9	1.0	1.1	0.9	0.6	0.4	0.7	0.8	0.8	1.0	0.8	1.3	0.9	0.6	0.6	1.1

<sup>^</sup> For further explanation of **rate calculation populations** and the **ratio to NSW rate**, see page 44, Note 2 and paragraph 8.

\* The rate calculations on the offence of murder is for the number of victims, not incidents.



**TABLE 3.2C: NUMBER OF RECORDED CRIMINAL INCIDENTS FOR MAJOR OFFENCES, NSW METROPOLITAN SSDs, 2009**

<i>Metropolitan Statistical Subdivision 2009</i>	Murder*	Assault - domestic violence related	Assault - non-domestic violence related	Sexual assault	Indecent assault, act of indecency and other sexual offences	Robbery without a weapon	Robbery with a firearm	Robbery with a weapon not a firearm	Break and enter dwelling	Break and enter non-dwelling	Motor vehicle theft	Steal from motor vehicle	Steal from retail store	Steal from dwelling	Steal from person	Fraud	Malicious damage to property
Inner Sydney	6	1,340	4,644	269	364	841	82	279	2,492	1,378	1,522	6,122	2,374	1,351	3,918	5,329	6,074
Eastern Suburbs	3	554	1,119	77	165	146	21	56	1,582	375	712	1,625	893	735	599	1,869	2,642
St George-Sutherland	1	1,069	1,491	118	187	242	25	97	1,436	509	1,046	1,955	1,008	701	357	1,786	4,786
Canterbury-Bankstown	6	1,013	1,146	107	174	227	52	129	1,532	467	1,645	1,993	699	493	275	2,260	2,889
Fairfield-Liverpool	9	1,380	1,637	204	217	245	57	172	2,304	662	1,567	2,346	1,005	596	380	2,029	3,807
Outer South Western Sydney	2	1,403	1,601	191	218	174	21	74	1,852	510	1,016	1,415	602	823	201	963	4,834
Inner Western Sydney	4	369	609	52	121	152	30	77	1,001	255	618	1,258	484	363	269	1,404	1,518
Central Western Sydney	6	1,350	1,805	167	230	329	76	194	2,464	634	1,490	2,338	1,158	785	510	2,753	3,621
Outer Western Sydney	0	1,335	1,923	225	284	153	22	72	1,548	681	1,229	1,896	806	790	226	1,455	5,507
Blacktown	2	1,764	2,076	240	247	269	14	95	2,696	520	1,374	1,926	1,241	759	374	2,518	5,594
Lower Northern Sydney	4	394	763	84	134	84	17	46	1,348	574	419	1,211	1,042	486	282	1,795	2,294
Central Northern Sydney	6	573	822	96	192	80	10	48	1,874	614	473	1,571	679	694	163	1,377	3,287
Northern Beaches	0	397	792	63	140	67	5	15	762	350	328	1,450	519	580	240	854	2,671
Central Coast	1	1,292	1,750	248	243	94	8	38	1,584	836	970	2,445	1,013	1,014	283	826	5,142
Newcastle	4	2,128	3,281	403	410	197	5	102	3,627	2,451	2,403	4,593	1,675	2,148	485	1,958	9,802
Wollongong	1	901	1,583	190	184	99	8	47	1,372	590	863	1,481	1,076	787	256	878	4,342

\* Number of victims.

**TABLE 3.2D: NUMBER OF RECORDED CRIMINAL INCIDENTS FOR MAJOR OFFENCES, NSW METROPOLITAN SSDs, 2008**

<i>Metropolitan Statistical Subdivision 2008</i>	Murder*	Assault - domestic violence related	Assault - non-domestic violence related	Sexual assault	Indecent assault, act of indecency and other sexual offences	Robbery without a weapon	Robbery with a firearm	Robbery with a weapon not a firearm	Break and enter dwelling	Break and enter non-dwelling	Motor vehicle theft	Steal from motor vehicle	Steal from retail store	Steal from dwelling	Steal from person	Fraud	Malicious damage to property
Inner Sydney	8	1,429	5,215	224	361	1,128	71	344	2,692	1,740	1,859	8,181	2,377	1,419	3,905	5,695	6,904
Eastern Suburbs	1	642	1,393	61	126	230	15	95	1,897	386	1,007	2,138	1,059	757	664	2,201	3,208
St George-Sutherland	1	1,039	1,684	133	164	307	20	131	1,552	769	1,186	2,644	879	672	378	1,954	5,401
Canterbury-Bankstown	1	917	1,297	121	140	270	49	146	1,469	679	1,851	2,667	735	468	306	2,392	3,344
Fairfield-Liverpool	7	1,282	1,677	181	203	263	29	147	2,270	814	1,702	3,130	1,037	608	397	2,391	4,217
Outer South Western Sydney	1	1,277	1,729	170	194	183	18	81	1,611	642	1,086	1,688	683	671	199	1,215	5,075
Inner Western Sydney	7	374	660	78	113	171	15	91	1,094	321	651	1,694	587	416	377	1,414	1,697
Central Western Sydney	5	1,198	2,060	162	228	387	58	208	2,570	764	1,865	3,344	1,095	626	630	2,951	4,224
Outer Western Sydney	2	1,304	1,922	171	258	155	6	72	1,668	827	1,111	2,031	764	820	277	1,549	6,007
Blacktown	1	1,629	2,062	197	222	277	17	113	2,578	623	1,447	2,338	1,173	882	369	2,870	5,756
Lower Northern Sydney	1	364	892	49	147	113	16	46	2,049	563	606	2,193	918	576	355	1,986	2,392
Central Northern Sydney	5	606	900	83	186	109	7	46	2,008	694	585	2,090	749	684	210	1,543	3,485
Northern Beaches	1	346	855	68	132	52	6	6	785	529	384	1,516	443	573	185	925	2,548
Central Coast	1	1,258	1,824	210	236	103	5	36	1,999	1,005	1,117	2,993	942	1,044	285	1,179	5,855
Newcastle	2	2,138	3,377	430	405	182	19	122	4,025	2,878	2,500	5,417	1,467	2,294	497	2,258	10,522
Wollongong	1	966	1,575	172	143	121	2	46	1,733	1,021	908	1,988	890	803	262	1,155	4,494

\* Number of victims.

**TABLE 3.3A: TRENDS<sup>a</sup> IN RECORDED CRIMINAL INCIDENTS FOR MAJOR OFFENCES,  
NSW LGAs, JANUARY 2008 TO DECEMBER 2009**

NSW LGAs	Murder*	Assault - domestic violence related	Assault - non-domestic violence related	Sexual assault	Indecent assault, act of indecency and other sexual offences	Robbery without a weapon	Robbery with a firearm	Robbery with a weapon not a firearm	Break and enter dwelling	Break and enter non-dwelling	Motor vehicle theft	Steal from motor vehicle	Steal from retail store	Steal from dwelling	Steal from person	Fraud	Malicious damage to property
Albury	.	ns	ns	ns	ns	.	.	.	ns	ns	-19.9	-17.9	ns	ns	ns	ns	ns
Armidale Dumaresq	.	ns	ns	.	ns	.	.	.	-36.4	ns	ns	ns	ns	ns	ns	ns	ns
Ashfield	.	ns	ns	.	ns	ns	.	.	ns	ns	ns	ns	ns	ns	-50.0	ns	ns
Auburn	.	ns	ns	ns	ns	-32.1	.	ns	ns	-29.9	-30.3	ns	ns	ns	ns	ns	-20.8
Ballina	.	ns	ns	ns	ns	.	.	.	-21.9	ns	ns	ns	ns	ns	ns	3.5	ns
Bairnald	.	.	.	.	.	.	.	.	.	.	.	.	.	.	.	.	ns
Bankstown	.	17.2	ns	ns	ns	ns	ns	ns	ns	-35.7	-20.9	-29.7	ns	ns	ns	ns	-16.1
Bathurst Regional	.	ns	ns	ns	ns	.	.	.	ns	ns	ns	ns	ns	ns	ns	ns	ns
Baulkham Hills	.	ns	-16.4	ns	ns	-39.0	.	.	ns	-24.1	ns	-30.8	ns	ns	-28.6	-12.4	ns
Bega Valley	.	ns	ns	ns	ns	.	.	.	ns	ns	ns	ns	ns	ns	.	.	ns
Bellingen	.	.	ns	.	.	.	.	.	ns	ns	.	ns	.	ns	.	.	ns
Berrigan	.	.	.	.	.	.	.	.	.	-47.3	.	.	.	ns	.	.	-24.8
Blacktown	.	ns	ns	ns	ns	ns	.	ns	ns	ns	ns	ns	ns	ns	ns	ns	ns
Bland	.	.	ns	.	.	.	.	.	ns	ns	.	ns	.	ns	.	.	ns
Blayney	.	.	ns	.	.	.	.	.	.	.	.	.	.	.	.	.	ns
Blue Mountains	.	ns	ns	ns	ns	ns	.	.	ns	ns	ns	ns	ns	ns	ns	ns	ns
Bogan	.	.	ns	.	.	.	.	.	.	.	.	.	.	.	.	.	ns
Bombala	.	.	.	.	.	.	.	.	.	.	.	.	.	.	.	.	ns
Boorowa	.	.	.	.	.	.	.	.	.	.	.	.	.	.	.	.	ns
Botany Bay	.	ns	ns	.	ns	-37.2	.	.	-20.9	ns	-28.8	-20.6	ns	ns	ns	-20.6	ns
Bourke	.	ns	ns	.	.	.	.	.	ns	ns	ns	ns	.	ns	.	.	-33.5
Brewarrina	.	ns	ns	.	.	.	.	.	ns	.	.	.	.	.	.	.	ns
Broken Hill	.	ns	ns	ns	ns	.	.	.	ns	-36.2	-35.6	-39.3	ns	32.1	.	ns	-17.4
Burwood	.	ns	ns	.	ns	ns	.	.	ns	ns	ns	-20.5	ns	-48.8	-36.4	ns	-19.1
Byron	.	ns	25.0	79.2	ns	.	.	.	ns	ns	-36.8	ns	ns	ns	ns	ns	ns
Cabonne	.	96.8	68.5	.	.	.	.	.	ns	ns	ns	ns	ns	46.3	.	.	ns
Camden	.	ns	ns	ns	ns	.	.	.	ns	ns	ns	ns	ns	ns	.	.	ns
Campbelltown	.	ns	ns	ns	ns	ns	.	ns	12.9	-28.7	ns	-29.4	ns	ns	ns	-23.8	ns
Canada Bay	.	ns	ns	.	ns	.	.	.	-13.5	ns	ns	-23.8	ns	ns	ns	ns	ns
Canterbury	.	ns	ns	ns	ns	ns	ns	ns	ns	ns	ns	-17.7	ns	ns	ns	-19.0	-9.3
Carrathool	.	.	ns	.	.	.	.	.	.	.	.	.	.	.	.	.	ns
Central Darling	.	ns	ns	.	.	.	.	.	ns	.	.	.	.	.	.	.	ns
Cessnock	.	ns	ns	ns	ns	.	.	.	.	ns	ns	ns	ns	ns	.	-47.0	ns
Clarence Valley	.	ns	ns	ns	ns	.	.	.	ns	-29.9	ns	ns	ns	ns	ns	ns	-12.9
Cobar	.	.	ns	.	.	.	.	.	.	ns	ns	.	.	.	.	.	ns
Coffs Harbour	.	ns	ns	ns	ns	ns	.	.	ns	-23.0	ns	ns	ns	ns	20.3	ns	14.3
Conargo	.	.	.	.	.	.	.	.	.	.	.	.	.	.	.	.	ns
Coolamon	.	.	.	.	.	.	.	.	.	.	.	.	.	.	.	.	ns
Cooma-Monaro	.	ns	ns	.	.	.	.	.	ns	ns	.	ns	.	ns	.	.	ns
Coonamble	.	ns	-22.9	.	.	.	.	.	ns	ns	.	ns	.	.	.	.	ns
Cootamundra	.	ns	ns	.	.	.	.	.	.	ns	.	ns	.	ns	.	.	ns
Corowa Shire	.	ns	ns	.	.	.	.	.	ns	97.1	.	ns	.	ns	.	.	ns
Cowra	.	30.9	ns	.	.	.	.	.	ns	ns	.	ns	.	ns	.	.	ns
Deniliquin	.	ns	ns	.	.	.	.	.	ns	-53.5	.	ns	.	ns	.	.	ns
Dubbo	.	ns	ns	ns	ns	.	.	.	ns	-31.1	ns	ns	ns	-31.8	.	ns	-23.1
Dungog	.	.	.	.	.	.	.	.	ns	54.8	.	ns	.	ns	.	.	ns
Eurobodalla	.	ns	ns	ns	ns	.	.	.	ns	ns	ns	31.7	ns	ns	.	-24.8	ns
Fairfield	.	ns	ns	ns	ns	ns	.	ns	ns	-16.8	ns	-16.1	-13.0	ns	ns	ns	ns
Forbes	.	ns	ns	.	.	.	.	.	ns	ns	.	ns	.	ns	.	.	ns
Gilgandra	.	-7.1	ns	.	.	.	.	.	ns	ns	.	ns	.	ns	.	.	ns
Glen Innes Severn	.	ns	ns	.	.	.	.	.	ns	ns	.	ns	.	ns	.	.	ns
Gloucester	.	.	ns	.	.	.	.	.	.	.	.	.	.	.	.	.	ns
Gosford	.	ns	ns	ns	ns	ns	.	ns	ns	ns	ns	ns	ns	ns	ns	-25.9	-11.9
Goulburn Mulwaree	.	ns	ns	.	ns	.	.	.	ns	ns	ns	ns	ns	ns	.	.	23.2
Great Lakes	.	ns	ns	ns	ns	.	.	.	-47.0	-31.2	ns	ns	ns	ns	.	-34.5	ns
Greater Hume Shire	.	.	ns	.	.	.	.	.	ns	ns	.	ns	.	ns	.	.	ns
Greater Taree	.	ns	ns	ns	ns	.	.	.	ns	ns	ns	ns	ns	ns	ns	0.0	ns
Griffith	.	ns	ns	ns	ns	.	.	.	ns	ns	104.0	ns	ns	ns	.	.	ns
Gundagai	.	.	.	.	.	.	.	.	.	.	.	.	.	.	.	.	ns
Gunnedah	.	ns	ns	.	.	.	.	.	ns	ns	ns	21.8	ns	ns	.	.	ns
Guyra	.	ns	.	.	.	.	.	.	.	.	.	.	.	.	.	.	ns
Gwydir	.	.	ns	.	.	.	.	.	.	.	.	.	.	ns	.	.	ns
Harden	.	.	.	.	.	.	.	.	.	.	.	.	.	.	.	.	ns
Hawkesbury	.	ns	ns	ns	ns	.	.	.	-26.2	ns	ns	ns	29.9	ns	ns	ns	ns
Hay	.	.	.	.	.	.	.	.	.	.	.	.	.	.	.	.	ns
Holroyd	.	8.5	ns	ns	ns	ns	ns	ns	ns	ns	ns	-35.4	ns	33.9	ns	ns	-13.6
Hornsby	.	ns	ns	ns	ns	ns	.	.	ns	ns	ns	-28.6	ns	ns	ns	ns	ns
Hunters Hill	.	.	ns	.	.	.	.	.	-47.2	.	.	-48.5	.	ns	.	.	-36.5
Hurstville	.	ns	ns	.	ns	-30.9	.	ns	ns	-32.5	ns	ns	55.0	16.8	ns	-13.3	ns
Inverell	.	ns	ns	ns	.	.	.	.	ns	32.5	.	ns	ns	ns	.	.	ns
Jerilderie	.	.	.	.	.	.	.	.	.	.	.	.	.	.	.	.	ns
Junee	.	ns	ns	.	.	.	.	.	ns	ns	.	.	.	ns	.	.	24.4
Kempsey	.	-32.8	ns	ns	ns	.	.	.	ns	ns	ns	ns	-42.9	ns	ns	ns	-26.3
Kiama	.	ns	ns	.	.	.	.	.	ns	ns	ns	ns	.	ns	.	.	ns
Kogarah	.	ns	ns	.	ns	ns	.	.	ns	ns	ns	ns	ns	ns	ns	.	ns
Ku-ring-gai	.	ns	ns	.	ns	.	.	.	ns	ns	-12.8	ns	ns	ns	.	.	ns
Kyogle	.	ns	ns	.	.	.	.	.	ns	ns	.	ns	.	ns	.	.	ns
Lachlan	.	ns	ns	.	.	.	.	.	ns	ns	.	ns	.	ns	.	.	ns
Lake Macquarie	.	ns	ns	ns	28.4	ns	.	.	ns	ns	ns	ns	14.9	8.3	ns	ns	ns
Lane Cove	.	ns	ns	.	.	.	.	.	-62.1	ns	ns	-53.3	.	-43.1	.	.	ns

**TABLE 3.3A: TRENDS<sup>^</sup> IN RECORDED CRIMINAL INCIDENTS FOR MAJOR OFFENCES, NSW LGAs, JANUARY 2008 TO DECEMBER 2009**

NSW LGAs	Murder*	Assault - domestic violence related	Assault - non-domestic violence related	Sexual assault	Indecent assault, act of indecency and other sexual offences	Robbery without a weapon	Robbery with a firearm	Robbery with a weapon not a firearm	Break and enter dwelling	Break and enter non-dwelling	Motor vehicle theft	Steal from motor vehicle	Steal from retail store	Steal from dwelling	Steal from person	Fraud	Malicious damage to property
Leeton	ns	ns	ns	.	.	.	.	.	ns	ns	65.4	ns	.	ns	.	.	-25.4
Leichhardt	ns	ns	ns	.	ns	.	.	.	ns	-23.4	ns	ns	ns	ns	ns	ns	ns
Lismore	ns	-20.4	ns	ns	ns	.	.	.	ns	ns	ns	ns	ns	ns	ns	ns	-20.8
Lithgow	ns	ns	ns	ns	ns	.	.	.	ns	ns	ns	ns	ns	ns	ns	ns	ns
Liverpool	14.3	ns	ns	ns	ns	ns	.	.	ns	-20.6	ns	-31.6	ns	ns	ns	-24.5	ns
Liverpool Plains	ns	63.0	.	.	.	.	.	.	.	.	.	.	.	.	.	.	ns
Lockhart	.	.	.	.	.	.	.	.	.	.	.	.	.	.	.	.	ns
Lord Howe Island	.	.	.	.	.	.	.	.	.	.	.	.	.	.	.	.	ns
Maitland	ns	ns	ns	ns	ns	.	.	.	ns	-30.7	ns	ns	34.2	ns	ns	-29.6	ns
Manly	ns	-17.4	.	.	ns	.	.	.	-31.0	-45.9	ns	-47.1	55.7	ns	ns	-2.4	ns
Marrickville	ns	ns	ns	ns	ns	-45.3	.	ns	-17.4	-17.0	ns	-28.6	ns	ns	-19.6	ns	ns
Mid-Western Regional	ns	ns	ns	.	ns	.	.	.	50.0	ns	63.6	ns	ns	ns	ns	ns	ns
Moree Plains	ns	ns	ns	ns	.	.	.	.	ns	ns	ns	ns	ns	ns	.	ns	ns
Mosman	ns	ns	ns	.	.	.	.	.	ns	.	-47.8	-60.9	ns	ns	ns	ns	33.9
Murray	.	.	ns	.	.	.	.	.	.	.	.	ns	.	ns	.	.	ns
Murrumbidgee	.	.	.	.	.	.	.	.	.	.	.	.	.	.	.	.	ns
Muswellbrook	ns	ns	.	.	.	.	.	.	95.3	ns	90.9	ns	ns	ns	.	ns	ns
Nambucca	ns	-21.3	.	.	ns	.	.	.	ns	ns	68.4	ns	.	ns	.	ns	-23.1
Narrabri	ns	-29.8	.	.	.	.	.	.	-27.4	ns	ns	ns	ns	ns	.	ns	-21.9
Narrandera	ns	ns	.	.	.	.	.	.	ns	137.9	.	33.3	ns	ns	.	ns	ns
Narromine	ns	ns	.	.	.	.	.	.	134.4	108.0	.	ns	.	ns	.	ns	ns
Newcastle	ns	ns	ns	ns	ns	ns	.	ns	ns	-30.1	ns	-22.7	ns	ns	ns	ns	ns
North Sydney	ns	ns	.	.	ns	ns	.	.	-29.8	ns	-25.9	-52.0	ns	ns	ns	ns	ns
Oberon	.	.	ns	.	.	.	.	.	ns	.	.	.	.	.	.	.	ns
Orange	ns	ns	ns	ns	ns	.	.	.	ns	ns	ns	-45.8	ns	-29.2	ns	ns	ns
Palerang	ns	ns	.	.	.	.	.	.	ns	ns	.	ns	.	ns	.	ns	ns
Parkes	ns	ns	.	.	ns	.	.	.	ns	ns	ns	-42.2	ns	ns	.	ns	ns
Parramatta	ns	-13.7	ns	ns	ns	ns	ns	ns	ns	ns	-19.1	-37.0	ns	26.8	-29.9	-9.9	ns
Penrith	ns	ns	42.4	ns	ns	ns	ns	ns	ns	ns	ns	ns	ns	ns	ns	ns	ns
Pittwater	ns	ns	.	.	ns	.	.	.	ns	-35.0	ns	ns	ns	ns	ns	ns	ns
Port Macquarie-Hastings	ns	ns	ns	ns	ns	.	.	.	ns	ns	36.6	40.9	ns	ns	ns	ns	ns
Port Stephens	ns	ns	ns	ns	ns	.	.	.	ns	ns	ns	ns	ns	ns	ns	ns	ns
Queanbeyan	ns	ns	.	.	ns	.	.	.	ns	ns	ns	ns	ns	ns	ns	ns	ns
Randwick	ns	-15.3	ns	ns	ns	-31.5	.	ns	-12.1	-15.0	-26.4	-22.8	ns	ns	ns	-16.4	-18.3
Richmond Valley	ns	-30.9	ns	ns	ns	.	.	.	ns	-46.3	ns	ns	ns	ns	.	ns	ns
Rockdale	ns	ns	.	.	ns	ns	.	ns	ns	ns	ns	-20.8	ns	ns	ns	ns	ns
Ryde	ns	-20.5	ns	ns	ns	-41.3	.	.	ns	ns	-27.8	-27.8	ns	ns	ns	-22.8	ns
Shellharbour	-28.5	ns	ns	ns	ns	.	.	.	ns	ns	ns	-26.4	ns	ns	ns	ns	ns
Shoalhaven	ns	ns	ns	ns	ns	ns	.	.	ns	-37.6	ns	ns	39.0	15.0	ns	ns	ns
Singleton	ns	ns	.	.	ns	.	.	.	ns	ns	56.9	ns	ns	ns	.	ns	ns
Snowy River	ns	ns	.	.	.	.	.	.	ns	73.1	.	ns	.	.	.	.	ns
Strathfield	ns	ns	.	.	ns	ns	.	ns	-19.2	-31.3	ns	-42.8	ns	ns	ns	ns	ns
Sutherland Shire	ns	-16.3	ns	45.9	ns	.	.	.	ns	-45.7	ns	-28.7	ns	ns	ns	ns	-13.1
Sydney	ns	-11.7	ns	ns	ns	-20.9	ns	-20.8	ns	-23.9	-26.3	-26.6	ns	ns	ns	ns	-16.5
Tamworth Regional	ns	ns	ns	ns	ns	.	.	.	ns	ns	ns	ns	ns	ns	ns	ns	ns
Temora	.	.	ns	.	.	.	.	.	.	ns	.	.	.	ns	.	.	-29.5
Tenterfield	ns	ns	.	.	.	.	.	.	ns	ns	.	ns	.	ns	.	.	-31.4
Tumbarumba	.	.	.	.	.	.	.	.	.	.	.	.	.	.	.	.	ns
Tumut Shire	ns	ns	.	.	.	.	.	.	ns	63.3	.	ns	.	ns	.	.	ns
Tweed	ns	ns	ns	ns	ns	.	.	.	ns	ns	ns	ns	ns	ns	ns	ns	ns
Unincorporated Far West	.	.	.	.	.	.	.	.	.	.	.	.	.	.	.	.	ns
Upper Hunter Shire	ns	ns	.	.	.	.	.	.	ns	ns	.	ns	.	ns	.	.	ns
Upper Lachlan Shire	.	.	.	.	.	.	.	.	.	ns	.	ns	.	.	.	.	ns
Uralla	.	.	ns	.	.	.	.	.	ns	.	.	.	.	.	.	.	ns
Urana	.	.	.	.	.	.	.	.	.	.	.	.	.	.	.	.	ns
Wagga Wagga	ns	ns	ns	ns	ns	.	.	.	ns	ns	-25.1	-28.0	ns	ns	-15.4	ns	ns
Wakool	.	.	.	.	.	.	.	.	.	.	.	.	.	.	.	.	ns
Walcha	.	.	.	.	.	.	.	.	.	.	.	.	.	.	.	.	ns
Walgett	ns	ns	.	.	.	.	.	.	ns	ns	.	ns	ns	ns	.	ns	-33.0
Warren	ns	ns	.	.	.	.	.	.	ns	ns	.	.	.	ns	.	.	ns
Warringah	ns	ns	ns	ns	ns	ns	.	.	ns	ns	ns	ns	9.3	ns	28.9	ns	ns
Warrumbungle Shire	ns	ns	.	.	.	.	.	.	ns	ns	.	ns	.	ns	.	.	ns
Waverley	ns	-23.6	.	.	ns	-48.6	.	.	ns	ns	-28.3	-21.2	-32.5	ns	ns	ns	-19.2
Weddin	.	.	.	.	.	.	.	.	.	.	.	.	.	.	.	.	ns
Wellington	ns	ns	.	.	.	.	.	.	52.6	ns	.	ns	ns	ns	.	.	44.6
Wentworth	ns	ns	.	.	.	.	.	.	ns	ns	ns	ns	ns	ns	.	.	ns
Willoughby	ns	ns	.	.	ns	ns	.	.	-41.9	ns	ns	-42.2	ns	ns	-37.6	ns	ns
Wingecarribee	ns	ns	ns	ns	ns	.	.	.	ns	ns	ns	ns	ns	ns	.	-45.2	ns
Wollondilly	ns	ns	.	.	ns	.	.	.	ns	ns	ns	ns	ns	ns	.	.	ns
Wollongong	ns	ns	ns	ns	ns	ns	.	ns	-28.8	-43.0	ns	-29.5	23.4	ns	ns	-21.2	ns
Woollahra	ns	ns	.	.	ns	ns	.	.	ns	ns	-37.4	-28.7	ns	ns	ns	ns	ns
Wyong	ns	ns	ns	ns	ns	.	.	.	-21.1	ns	ns	-28.9	ns	ns	ns	-33.5	ns
Yass Valley	ns	ns	.	.	.	.	.	.	ns	ns	.	ns	.	ns	.	.	ns
Young	ns	ns	.	.	.	.	.	.	ns	ns	.	ns	ns	ns	.	.	38.1
<b>NSW</b>	<b>ns</b>	<b>ns</b>	<b>ns</b>	<b>ns</b>	<b>ns</b>	<b>-15.7</b>	<b>ns</b>	<b>-10.6</b>	<b>-6.4</b>	<b>-16.3</b>	<b>-8.5</b>	<b>-18.8</b>	<b>ns</b>	<b>ns</b>	<b>-4.8</b>	<b>-10.7</b>	<b>ns</b>

<sup>^</sup> For further explanation of trend results, see page 44, paragraphs 5 and 6.

\* There were no LGAs with 20 murder victims in both 2008 and 2009, hence no trend tests were reported. The trend test for NSW on the offence of murder is for the number of victims, not incidents.

**TABLE 3.3B: RATIO TO NSW RATE\* OF RECORDED CRIMINAL INCIDENTS PER 100,000 POPULATION, MAJOR OFFENCES, NSW LGAs, 2009**

NSW LGAs	Murder*	Assault - domestic violence related	Assault - non-domestic violence related	Sexual assault	Indecent assault, act of indecency and other sexual offences	Robbery without a weapon	Robbery with a firearm	Robbery with a weapon not a firearm	Break and enter dwelling	Break and enter non-dwelling	Motor vehicle theft	Steal from motor vehicle	Steal from retail store	Steal from dwelling	Steal from person	Fraud	Malicious damage to property
Albury		1.3	1.4	1.3	1.5	0.6		0.3	2.0	2.1	1.3	1.9	1.6	2.1	0.8	0.8	1.8
Armidale Dumaresq		1.2	1.1	1.2	1.5	0.4		0.5	1.4	2.2	0.7	1.0	1.1	1.1	0.5	0.6	1.3
Ashfield	4.2	0.5	0.4	0.4	0.7	1.2	2.9	1.0	0.8	0.5	1.0	0.9	0.7	0.7	0.6	1.1	0.5
Auburn	2.4	1.0	0.9	0.8	0.8	2.3	4.7	3.1	1.1	0.8	1.8	1.6	0.7	0.6	1.3	1.6	0.6
Ballina		0.9	0.9	1.0	1.4	0.5		0.3	0.9	1.8	0.6	0.9	0.8	1.4	0.4	0.7	1.0
Bairnald																	
Bankstown	2.9	1.0	0.7	0.5	0.7	1.1	2.6	1.7	0.9	0.6	1.7	1.0	0.9	0.5	0.6	1.9	0.7
Bathurst Regional		1.5	1.4	1.9	1.5	0.4		0.3	1.1	0.9	0.8	0.9	0.8	1.3	0.5	0.6	1.3
Baulkham Hills		0.5	0.4	0.3	0.5	0.3	0.5	0.4	0.7	0.4	0.5	0.5	0.8	0.5	0.3	0.8	0.5
Bega Valley		0.9	0.8	1.5	1.0	0.1		0.1	0.6	1.9	0.4	0.6	0.7	0.9	0.4	0.3	0.9
Bellingen		0.3	0.5	2.6	0.3	0.1		1.0	0.6	1.5	0.9	0.6	0.2	1.6	0.1	0.2	1.0
Berrigan		0.5	0.6	0.4	0.6				0.4	1.2	0.3	0.2	0.2	1.1		0.3	0.7
Blacktown	0.6	1.6	1.2	1.3	1.1	1.7	0.7	1.4	1.6	0.6	1.5	1.0	1.4	0.9	0.9	1.7	1.3
Bland		0.8	0.8	0.5	1.5			0.7	0.5	1.6	0.6	0.5	0.3	2.0	0.1	0.5	0.9
Blayney		0.7	0.8	0.9	1.5				0.5	1.5	0.1	0.3	0.0	1.2		0.3	1.2
Blue Mountains		0.8	0.9	0.8	1.2	0.6	0.2	0.5	0.7	0.8	0.5	0.6	0.4	0.8	0.4	0.5	1.2
Bogan																	
Bombala																	
Boorowa																	
Botany Bay	2.3	0.8	1.0	0.5	0.8	1.3	2.0	0.8	0.7	0.9	1.2	1.5	1.1	0.8	2.1	1.8	1.0
Bourke		10.2	4.8	3.7	4.7	3.0			3.2	3.1	3.1	2.9	2.0	3.6	1.4	0.7	3.6
Brewarrina																	
Broken Hill		2.3	1.5	1.8	1.5	0.2			2.1	1.3	0.6	0.9	0.5	2.8	0.3	0.4	1.6
Burwood		0.6	0.9	0.8	1.3	2.6	2.3	2.9	1.1	0.7	1.3	1.2	3.1	0.7	1.9	2.7	0.7
Byron		1.0	1.9	2.2	1.2	0.6		0.3	0.9	1.6	0.5	1.3	1.0	2.3	2.3	0.8	1.1
Cabonne	6.7	1.3	1.2	1.4	0.5			0.3	1.1	1.1	0.5	0.6	0.6	1.5	0.1	0.2	1.0
Camden		0.8	0.6	0.7	0.8	0.5	0.3	0.7	0.8	0.7	1.0	0.8	0.6	1.1	0.2	0.8	0.9
Campbelltown	0.6	2.0	1.4	1.6	1.4	1.9	2.0	1.7	1.6	0.8	1.6	1.0	1.1	1.2	0.8	0.9	1.6
Canada Bay	2.4	0.5	0.4	0.4	0.8	0.5	1.7	0.8	0.7	0.4	0.8	1.0	0.2	0.6	0.4	1.1	0.5
Canterbury		0.7	0.5	0.6	0.7	1.6	2.3	1.7	0.7	0.4	1.5	0.9	0.5	0.5	0.6	0.8	0.5
Carrathool																	
Central Darling																	
Cessnock	1.7	1.4	0.9	1.4	1.1	0.2		0.2	0.9	1.8	1.9	0.8	0.6	1.4	0.3	0.5	1.2
Clarence Valley		0.7	1.1	1.5	0.9	0.1		0.5	1.2	1.6	0.8	0.8	0.8	1.6	0.3	0.5	1.0
Cobar		0.9	1.3	1.9	0.8				0.5	1.5	0.5	0.9	0.7	1.5	0.1	0.6	1.4
Coffs Harbour	1.2	1.3	1.1	1.6	1.1	0.5	0.2	0.5	0.9	1.8	1.1	1.2	1.1	1.2	0.7	0.5	1.2
Conargo																	
Coolamon		0.5	0.5	0.4	0.3				0.4	2.2	0.4	0.2	0.2	1.0		0.4	0.9
Cooma-Monaro		0.8	1.1	1.0	0.9	0.4			0.6	1.0	0.2	0.4	0.5	1.3	0.3	0.5	1.3
Coonamble		2.6	2.2	1.1	1.6				3.6	4.6	1.3	2.3	0.6	2.0	0.2	1.0	2.5
Cootamundra	11.6	0.9	1.1	1.5	1.6	0.2			0.6	1.5	0.4	0.6	0.5	1.4	0.4	0.4	1.1
Corowa Shire	7.6	0.8	0.7	1.6	1.2	0.5			0.4	2.1	0.5	0.3	0.5	1.7	0.1	0.2	1.1
Cowra		1.9	1.7	1.3	1.3	0.3			1.9	3.1	0.6	1.7	0.7	1.9	0.4	0.3	1.8
Deniliquin		1.2	0.5	1.1	1.0	0.2		0.6	0.7	1.0	0.3	0.8	0.7	1.5		0.2	1.3
Dubbo		1.7	1.7	1.8	2.1	0.6		0.8	1.8	1.2	1.2	1.8	1.3	1.4	0.3	0.9	1.4
Dungog		0.6	0.3	0.6	1.1				0.5	2.1	0.7	0.7		1.0	0.2	0.2	0.7
Eurobodalla	2.4	1.1	1.2	1.4	1.4	0.3		0.5	1.1	1.3	0.7	1.6	0.9	1.3	0.3	0.4	1.1
Fairfield	3.7	0.9	0.8	0.7	0.7	1.3	2.3	2.1	1.0	0.7	1.3	0.9	0.6	0.5	0.7	1.2	0.6
Forbes		2.1	1.8	1.3	1.1	0.2			1.4	3.3	0.7	1.2	0.6	3.9	0.1	0.6	2.6
Gilgandra		1.5	1.8	1.4	2.3				1.7	1.8	1.5	1.1	0.9	2.1	0.3	0.7	1.5
Glen Innes Severn		0.8	1.1	2.7	0.9	0.2			0.7	1.5	0.2	0.5	0.3	1.6	0.2	0.4	1.2
Gloucester		0.6	0.9	1.0	1.1	0.4			0.2	2.0	0.4	0.3	0.1	1.0		0.2	0.8
Gosford		0.9	0.9	1.1	0.9	0.6	0.3	0.7	0.8	1.0	0.8	1.2	1.2	1.0	0.8	0.5	1.0
Goulburn Mulwaree		1.4	1.2	1.9	1.4	0.5		0.5	0.7	0.8	0.7	0.6	0.7	1.4	0.4	0.7	1.7
Great Lakes	2.5	1.6	1.2	1.3	1.0	0.3		0.2	0.9	1.8	0.9	0.9	0.8	1.2	0.3	0.5	1.1
Greater Hume Shire		0.5	0.4	1.7	0.8		1.5		0.8	2.2	0.7	0.3	0.2	1.2		0.3	0.6
Greater Taree		1.4	1.1	1.5	1.9	0.5		0.5	2.0	1.9	1.8	0.9	0.8	1.3	0.6	0.8	1.2
Griffith	3.5	1.6	1.5	1.3	1.5	0.2		0.3	1.4	0.8	1.3	0.8	1.3	1.2	0.2	0.7	1.4
Gundagai		0.6	0.2	1.7	0.7				0.3	0.9	0.4	0.4	0.6	0.3	0.4	1.6	0.4
Gunnedah		1.7	1.5	0.8	1.0	0.2	1.3		1.2	2.2	0.7	1.2	0.7	2.0	0.1	0.5	1.3
Guyra		1.6	1.2	2.9	1.2				0.5	1.8	0.6	0.4	0.1	1.3	0.3	0.3	1.2
Gwydir		0.4	0.8	0.9	0.3				0.4	1.0	0.1	0.2	0.3	1.4	0.1	0.2	0.6
Harden		0.6	0.5	0.9	0.4				0.3	0.8	0.2	0.3	0.5	1.0	0.2	0.2	0.5
Hawkesbury		1.1	0.8	1.2	1.0	0.5	0.5	0.9	0.8	0.9	1.2	0.6	0.7	0.9	0.3	0.7	1.2
Hay		1.9	0.7	1.0	2.0				0.4	2.0	0.3	0.3		0.8		0.7	0.6
Holroyd		1.2	0.8	0.9	0.9	1.8	4.0	1.7	1.4	0.5	1.5	0.8	0.6	0.9	0.8	1.5	0.8
Hornsby	3.3	0.3	0.4	0.4	0.7	0.5	0.4	0.5	0.5	0.6	0.3	0.5	0.6	0.4	0.3	0.6	0.6
Hunters Hill		0.3	0.4	0.1	0.7		3.2	0.3	0.5	0.4	0.4	0.5	0.0	0.7		0.5	0.5
Hurstville		0.6	0.5	0.5	0.6	1.6	1.5	2.1	0.7	0.5	0.9	0.8	1.4	0.6	0.8	0.8	0.7
Inverell		1.6	1.7	2.3	1.5				1.0	1.2	0.3	0.6	1.7	2.1	0.2	0.4	1.5
Jerilderie																	
Junee	14.3	1.5	1.0	2.7	1.5				0.8	2.7	0.6	0.7	0.3	1.6	0.1	0.3	1.2
Kempsey		1.8	1.4	1.5	1.3	0.5	1.0	0.9	2.1	2.2	1.8	0.9	0.5	2.2	0.5	0.5	1.2
Kiama		0.4	0.5	0.3	0.7	0.4			0.5	0.6	0.4	1.1	0.2	0.7	0.2	0.2	0.6
Kogarah		0.7	0.5	0.4	0.5	1.3	1.6	1.0	0.6	0.5	0.7	0.7	0.8	0.5	0.5	0.9	0.7
Ku-ring-gai		0.2	0.2	0.3	0.6	0.2		0.4	1.0	0.5	0.2	0.6	0.1	0.7	0.1	0.5	0.5
Kyogle		1.7	1.5	1.7	2.1	0.2			1.0	1.8	0.9	0.4	0.6	1.3	0.1	0.3	1.3
Lachlan		2.3	1.1	1.7	1.9				0.9	2.1	0.6	0.7	0.2	2.1	0.1	0.3	1.6
Lake Macquarie	0.9	1.0	0.8	1.2	1.0	0.3	0.1	0.4	0.8	1.6	1.2	1.0	1.0	1.1	0.3	0.6	1.1
Lane Cove		0.2	0.3		0.3	0.5	0.5	0.4	0.6	0.7	0.4	0.5	0.2	0.4	0.2	1.1	0.4

**TABLE 3.3B: RATIO TO NSW RATE\* OF RECORDED CRIMINAL INCIDENTS PER 100,000 POPULATION, MAJOR OFFENCES, NSW LGAs, 2009**

NSW LGAs	Murder*	Assault - domestic violence related	Assault - non-domestic violence related	Sexual assault	Indecent assault, act of indecency and other sexual offences	Robbery without a weapon	Robbery with a firearm	Robbery with a weapon not a firearm	Break and enter dwelling	Break and enter non-dwelling	Motor vehicle theft	Steal from motor vehicle	Steal from retail store	Steal from dwelling	Steal from person	Fraud	Malicious damage to property
Leeton	.	1.1	1.2	1.0	1.3	0.5	.	0.4	1.8	3.0	1.1	0.7	0.5	1.7	0.1	0.3	1.2
Leichhardt	3.3	0.6	0.8	0.5	0.8	0.6	4.8	1.3	0.8	0.7	1.4	1.7	0.9	0.8	0.9	1.2	0.9
Lismore	3.9	1.5	1.4	1.7	1.5	0.4	.	0.3	0.6	1.2	0.7	0.8	1.4	1.0	0.6	0.7	1.1
Lithgow	.	1.4	1.6	1.7	1.6	1.2	.	0.2	1.1	1.2	0.8	0.6	0.7	1.5	0.4	0.7	1.8
Liverpool	0.5	1.1	0.8	1.1	0.9	1.2	2.4	1.9	1.2	0.7	1.3	1.0	1.3	0.6	0.8	1.1	0.8
Liverpool Plains	.	1.4	1.0	.	0.7	0.5	.	.	0.4	0.8	0.3	0.3	0.2	1.0	0.1	0.5	0.6
Lockhart	.	0.7	0.5	2.0	3.3	.	.	.	0.4	2.4	0.8	0.2	.	1.3	.	.	0.8
Lord Howe Island	.	.	.	.	.	.	.	.	.	.	.	.	.	.	.	.	.
Maitland	1.3	1.1	1.1	1.5	1.0	0.6	0.2	0.7	0.9	1.5	1.4	1.4	1.0	1.5	0.6	0.8	1.4
Manly	.	0.5	1.2	0.6	1.1	0.5	0.4	0.3	0.6	0.4	0.4	0.7	1.1	1.1	1.6	1.0	0.8
Marrickville	.	0.8	0.9	0.8	1.2	1.8	3.3	2.7	1.0	0.9	1.6	1.9	0.9	0.9	1.3	1.6	1.1
Mid-Western Regional	3.9	1.2	1.2	1.1	2.3	0.3	.	.	1.1	2.1	1.0	0.6	0.7	1.8	0.2	0.5	1.5
Moree Plains	6.1	4.3	3.2	2.6	1.2	1.4	.	0.6	3.2	4.3	1.9	1.8	2.5	2.1	0.4	0.7	2.7
Mosman	.	0.3	0.2	0.3	0.8	0.3	1.1	0.4	0.9	0.2	0.4	0.6	0.3	0.7	0.4	0.6	0.6
Murray	.	0.7	0.6	0.7	0.8	.	.	.	0.8	1.0	0.1	0.4	0.9	1.6	0.6	0.3	0.8
Murrumbidgee	.	.	.	.	.	.	.	.	.	.	.	.	.	.	.	.	.
Muswellbrook	.	1.3	1.5	1.2	1.3	1.0	0.9	.	2.2	2.4	1.2	1.1	0.6	1.8	0.4	0.6	2.0
Nambucca	4.6	1.6	1.4	1.6	1.7	0.1	.	0.2	1.3	2.1	1.1	1.1	0.3	1.5	0.2	0.3	1.1
Narrabri	6.5	1.4	1.1	1.3	1.3	.	.	.	1.1	1.5	0.7	1.0	0.7	1.7	0.1	0.6	1.3
Narrandera	.	2.0	1.5	1.0	0.6	0.6	.	.	2.3	4.1	0.3	1.3	1.3	1.9	0.3	0.9	1.9
Narromine	12.9	1.5	1.4	1.2	2.9	.	.	.	1.9	2.8	1.1	1.1	0.5	2.7	0.4	0.3	1.7
Newcastle	.	1.1	1.5	1.1	1.2	1.5	0.3	1.7	1.6	1.8	1.6	1.8	1.5	1.5	1.3	1.0	1.5
North Sydney	4.2	0.4	0.6	0.5	0.5	0.6	0.7	0.9	1.0	1.2	0.5	0.6	0.6	0.7	1.0	1.4	0.6
Oberon	.	0.9	1.0	2.4	1.0	.	.	.	0.8	0.6	0.6	0.8	0.3	1.2	0.1	0.2	0.8
Orange	2.3	1.4	1.6	1.2	1.2	0.6	.	0.8	1.8	1.1	0.9	1.3	1.6	1.1	0.6	0.5	1.8
Palerang	.	0.7	0.7	0.4	1.3	.	.	.	0.7	0.9	0.6	0.5	0.3	1.0	0.2	0.4	0.8
Parkes	.	1.7	1.3	1.9	1.9	0.1	.	0.3	1.1	1.6	0.6	1.0	0.5	2.2	0.1	0.5	1.5
Parramatta	2.2	1.1	1.1	0.8	1.0	1.7	2.5	2.6	1.2	0.7	1.2	1.0	1.7	0.8	1.2	1.8	0.8
Penrith	.	1.3	1.2	1.3	1.2	1.2	1.6	1.1	0.9	0.7	1.5	1.1	1.1	0.8	0.6	1.2	1.2
Pittwater	.	0.4	0.5	0.5	0.7	0.3	.	0.3	0.5	0.7	0.5	1.2	0.4	0.8	0.5	0.7	0.9
Port Macquarie-Hastings	2.4	1.1	1.2	1.2	1.1	0.5	0.2	0.2	0.7	1.4	0.8	1.0	0.7	1.4	0.5	0.5	1.1
Port Stephens	.	1.0	0.9	1.2	0.6	0.3	.	0.6	1.5	1.7	1.3	1.2	0.8	1.4	0.5	0.6	1.1
Queanbeyan	.	0.8	0.7	0.7	0.7	0.2	.	0.4	0.9	0.7	0.6	0.9	0.4	0.9	0.4	0.8	1.0
Randwick	1.4	0.7	0.8	0.6	0.8	1.3	0.9	1.3	1.0	0.5	0.9	0.9	1.0	0.8	1.0	1.3	0.7
Richmond Valley	3.9	1.9	1.4	1.8	1.6	0.5	.	0.2	1.1	1.8	1.2	0.8	0.4	1.7	0.3	0.4	1.4
Rockdale	.	0.8	0.6	0.3	0.5	1.5	0.6	1.3	0.6	0.4	1.0	0.7	0.4	0.4	0.4	1.1	0.6
Ryde	0.8	0.5	0.4	0.6	0.7	0.5	0.4	0.6	0.6	0.4	0.4	0.6	1.1	0.4	0.6	1.0	0.5
Shellharbour	.	0.7	0.9	1.2	0.7	0.3	0.9	0.7	1.1	0.9	1.1	0.9	0.8	0.9	0.5	0.5	1.1
Shoalhaven	.	1.5	1.2	1.5	1.1	0.5	.	0.3	1.4	1.2	0.8	1.1	0.9	1.5	0.4	0.4	1.3
Singleton	3.7	0.7	0.8	1.1	1.3	0.2	.	0.4	0.9	1.7	1.5	1.0	0.5	1.3	0.2	0.5	1.1
Snowy River	.	0.7	1.0	0.8	1.5	.	.	.	0.7	2.1	0.2	0.4	0.4	1.1	0.7	1.7	1.2
Strathfield	.	0.6	0.8	0.4	0.9	3.2	3.9	3.7	1.3	0.5	1.4	1.1	0.4	0.7	2.1	1.9	0.6
Sutherland Shire	0.4	0.6	0.6	0.5	0.5	0.5	0.5	0.3	0.5	0.4	0.5	0.5	0.7	0.6	0.6	0.6	0.8
Sydney	1.5	1.3	3.8	1.9	1.9	7.8	3.8	5.0	1.5	2.1	1.3	3.6	3.7	1.7	14.8	4.7	1.5
Tamworth Regional	1.5	1.5	1.4	2.0	1.6	0.5	0.3	0.2	1.4	1.4	0.9	0.9	1.0	1.6	0.6	0.5	1.4
Temora	.	0.6	1.1	0.5	0.4	0.3	.	0.7	0.8	2.1	0.4	0.4	0.2	1.5	.	0.1	0.9
Tenterfield	.	1.3	1.7	0.7	1.5	.	.	.	1.4	1.6	0.5	1.4	1.2	2.1	0.3	0.2	0.8
Tumbarumba	.	0.7	0.2	0.9	0.7	.	.	.	0.4	2.2	0.4	0.3	0.1	0.6	0.2	0.3	0.5
Tumut Shire	.	1.0	1.1	0.6	0.5	0.2	.	.	0.3	1.6	0.4	0.6	0.4	0.6	0.3	0.3	1.2
Tweed	1.0	0.9	0.8	1.2	0.8	0.6	0.3	0.3	0.8	1.3	0.8	1.0	1.1	1.4	0.4	0.6	0.9
Unincorporated Far West	.	.	.	.	.	.	.	.	.	.	.	.	.	.	.	.	.
Upper Hunter Shire	.	0.7	0.6	0.5	0.6	.	.	.	0.5	1.3	0.4	0.3	0.1	1.1	0.1	0.3	0.8
Upper Lachlan Shire	.	0.3	0.4	0.2	0.7	0.3	.	.	0.3	1.1	0.4	0.4	0.2	1.1	0.1	0.2	0.7
Uralla	14.4	0.6	0.8	1.1	0.7	.	.	.	0.6	0.7	0.3	0.4	0.4	0.9	0.2	0.3	0.7
Urana	.	.	.	.	.	.	.	.	.	.	.	.	.	.	.	.	.
Wagga Wagga	.	1.3	1.3	1.2	1.4	0.4	.	0.2	1.2	1.6	0.8	1.4	1.1	2.4	0.6	0.6	1.5
Wakool	.	0.9	0.4	1.8	0.6	.	.	.	0.2	1.2	0.2	0.1	.	0.6	.	0.0	0.6
Walcha	.	0.9	0.9	1.0	1.2	.	.	.	0.6	1.6	0.9	0.4	.	0.7	.	0.2	0.9
Walgett	.	7.3	4.0	3.2	2.1	0.3	.	.	4.3	4.3	0.8	1.4	1.6	2.2	0.3	0.9	2.0
Warren	.	.	.	.	.	.	.	.	.	.	.	.	.	.	.	.	.
Warrangah	.	0.4	0.4	0.4	0.7	0.6	0.4	0.2	0.5	0.5	0.4	0.8	0.8	0.7	0.5	0.7	0.7
Warrumbungle Shire	.	1.3	1.1	1.4	1.3	.	.	.	0.9	2.2	0.7	0.7	0.4	1.8	0.1	0.9	1.1
Waverley	.	0.6	1.0	0.4	1.3	1.0	1.6	0.4	1.0	0.6	1.0	0.9	2.1	1.2	3.2	2.2	0.8
Weddin	.	0.1	0.7	0.4	0.7	0.5	.	.	0.4	1.5	.	0.4	0.1	1.0	.	0.1	0.5
Wellington	.	2.3	1.5	3.3	2.0	0.2	.	1.4	2.2	1.8	1.3	0.8	1.1	1.7	0.4	0.4	2.7
Wentworth	12.2	3.4	1.7	2.5	2.2	.	.	.	1.7	3.7	1.7	1.1	0.5	2.4	0.2	0.7	1.3
Willoughby	.	0.2	0.4	0.5	0.5	0.6	1.1	0.7	0.8	0.9	0.4	0.6	2.7	0.5	0.9	1.6	0.5
Wingecarribee	1.9	0.7	0.9	0.9	1.0	0.2	.	0.1	0.6	1.2	0.5	0.5	0.4	1.0	0.3	0.5	1.1
Wollondilly	2.1	0.9	0.7	0.7	1.0	0.3	.	0.5	0.7	0.8	0.7	0.6	0.3	0.8	0.2	0.4	0.9
Wollongong	0.4	0.9	1.1	1.1	0.9	0.8	0.3	0.8	0.8	0.7	1.0	0.7	1.6	0.9	0.7	0.7	1.1
Woollahra	1.6	0.4	0.5	0.5	0.5	0.7	1.7	0.7	1.2	0.7	0.8	1.1	0.6	1.1	1.5	1.2	0.7
Wyong	0.6	1.4	1.1	1.6	1.2	0.6	0.5	0.3	1.0	0.9	1.1	1.2	1.0	1.1	0.5	0.6	1.3
Yass Valley	.	0.6	1.0	0.7	1.4	0.1	.	.	0.6	1.1	0.6	0.5	0.2	1.2	0.1	0.8	0.9
Young	.	1.6	1.4	1.4	2.1	.	.	0.3	0.9	1.6	0.3	0.6	0.7	1.3	0.2	0.5	1.8
NSW	1.0	1.0	1.0	1.0	1.0	1.0	1.0	1.0	1.0	1.0	1.0	1.0	1.0	1.0	1.0	1.0	1.0

^ For further explanation of rate calculation populations and the ratio to NSW rate, see page 44, Note 2 and paragraph 8. A result of '.' indicates either that there were no relevant offences recorded in the LGA, or that the population is less than 3,000 people and no rate was calculated.

Sydney LGA can be considered a special case since the population used to calculate the rate is much lower than the population using the area for work and entertainment and this will be reflected in higher incident rates.

\* The ratios given on the offence of murder are calculated for the number of victims, not incidents, and must be treated with caution since for LGAs with relatively small populations a single murder victim will result in relatively high ratio to state.

TABLE 3.3C: NUMBER OF RECORDED CRIMINAL INCIDENTS FOR MAJOR OFFENCES, NSW LGAs, 2009

NSW LGAs 2009	Murder*	Assault - domestic violence related	Assault - non-domestic violence related	Sexual assault	Indecent assault, act of indecency and other sexual offences	Robbery without a weapon	Robbery with a firearm	Robbery with a weapon not a firearm	Break and enter dwelling	Break and enter non-dwelling	Motor vehicle theft	Steal from motor vehicle	Steal from retail store	Steal from dwelling	Steal from person	Fraud	Malicious damage to property
Albury	0	243	392	40	56	15	0	4	603	289	214	642	228	325	59	189	1,334
Armistead Dumaresq	0	109	157	19	28	6	0	3	206	154	57	164	84	84	18	70	478
Ashfield	2	80	104	11	22	27	8	10	188	58	131	264	90	91	34	238	330
Auburn	2	269	398	35	46	89	23	54	477	162	412	773	157	131	132	584	686
Ballina	0	140	216	26	45	11	0	3	214	201	80	258	102	181	25	149	586
Balranald	0	19	15	2	1	0	0	0	13	13	3	7	2	11	0	4	41
Bankstown	6	648	711	57	99	108	31	73	966	299	985	1,179	481	292	158	1,682	1,774
Bathurst Regional	0	208	300	45	42	9	0	3	250	90	93	239	92	157	27	106	707
Baulkham Hills	0	322	356	33	59	25	6	17	718	211	247	608	379	264	70	637	1,300
Bega Valley	0	110	155	30	25	1	0	1	110	171	45	142	67	95	17	50	452
Bellingen	0	16	38	21	3	1	0	3	44	54	37	54	8	62	1	15	198
Berrigan	0	15	31	2	4	0	0	0	18	29	8	11	6	29	0	13	85
Blacktown	2	1,764	2,076	240	247	269	14	95	2,696	520	1,374	1,926	1,241	759	374	2,518	5,594
Bland	0	19	28	2	7	0	0	1	20	28	12	23	5	38	1	17	86
Blayney	0	18	30	4	8	0	0	0	19	28	2	14	1	26	0	9	122
Blue Mountains	0	218	375	39	69	23	1	9	297	179	119	291	88	191	39	201	1,339
Bogan	0	22	42	4	0	0	0	0	15	8	13	20	5	21	0	5	43
Bombala	0	11	11	1	3	0	0	0	9	37	2	7	2	5	1	4	42
Boorowa	0	2	8	3	3	0	0	0	12	8	0	8	3	6	0	5	24
Botany Bay	1	118	217	11	23	27	5	7	167	96	153	381	128	93	112	351	545
Bourke	0	117	85	7	11	5	0	0	58	26	31	60	18	34	6	11	163
Brewarrina	0	55	53	7	6	1	0	0	50	15	20	22	4	20	1	6	95
Broken Hill	0	173	168	22	22	2	0	0	252	74	38	119	30	173	8	42	450
Burwood	0	79	168	16	33	47	5	23	214	67	143	272	303	66	91	444	317
Byron	0	115	345	43	29	10	0	2	169	142	55	284	91	223	101	123	481
Cabonne	1	61	91	11	5	0	0	1	84	41	22	53	24	60	2	15	181
Camden	0	167	198	24	34	14	1	9	247	98	164	297	95	181	12	206	716
Campbelltown	1	1,099	1,234	149	153	153	20	60	1,435	321	759	958	475	539	178	667	3,553
Canada Bay	2	129	169	17	43	18	8	13	321	84	184	464	46	128	38	396	572
Canterbury	0	365	435	50	75	119	21	56	566	168	660	814	218	201	117	578	1,115
Carrathool	0	15	31	2	7	1	0	0	11	13	6	12	1	7	1	2	60
Central Darling	0	109	49	1	13	0	0	0	30	13	5	19	3	9	0	5	47
Cessnock	1	254	267	42	43	5	0	2	280	252	299	263	84	213	19	116	890
Clarence Valley	0	141	317	47	36	4	0	6	355	220	124	287	126	247	25	131	768
Cobar	0	17	39	6	3	0	0	0	16	21	9	30	10	24	1	16	105
Coffs Harbour	1	335	448	68	58	20	1	8	371	339	244	583	227	263	71	183	1,233
Conargo	0	10	4	0	3	0	0	0	7	4	1	11	2	9	0	1	39
Coolamon	0	7	11	1	1	0	0	0	10	25	5	7	2	13	0	9	54
Cooma-Monaro	0	32	65	6	7	2	0	0	36	28	6	25	14	39	4	27	188
Coonamble	0	41	54	3	5	0	0	0	91	54	18	66	8	26	1	22	157
Cootamundra	1	26	48	7	9	1	0	0	27	31	9	29	11	33	4	14	116
Corowa Shire	1	36	44	11	10	3	0	0	30	67	17	23	16	58	2	10	187
Cowra	0	89	127	10	13	2	0	0	146	108	26	144	26	73	8	22	333
Deniliquin	0	34	22	5	6	1	0	1	33	20	7	39	16	35	0	9	142
Dubbo	0	258	386	44	63	12	0	8	430	135	150	496	149	167	19	176	839
Dungog	0	19	16	3	7	0	0	0	26	48	19	39	0	25	2	7	85
Eurobodalla	1	151	261	32	38	5	0	4	233	134	77	403	96	146	15	76	584
Fairfield	8	668	819	86	104	128	29	93	1,089	346	806	1,112	355	267	187	1,090	1,745
Forbes	0	76	98	8	8	1	0	0	78	87	22	78	16	115	1	27	368
Gilgandra	0	26	46	4	8	0	0	0	45	23	22	33	12	29	2	16	97
Glen Innes Severn	0	28	57	15	6	1	0	0	37	38	7	28	9	44	2	17	160
Gloucester	0	11	27	3	4	1	0	0	6	27	7	11	2	15	0	4	58
Gosford	0	543	820	107	108	50	3	27	752	456	440	1,298	562	522	175	409	2,481
Goulburn Mulwaree	0	140	183	33	29	8	0	3	111	59	62	105	59	114	14	92	664
Great Lakes	1	201	239	29	25	5	0	2	196	170	96	205	82	125	13	95	558
Greater Hume Shire	0	18	21	11	6	0	1	0	47	62	22	24	5	36	0	13	83
Greater Taree	0	244	313	43	68	13	0	6	557	245	271	276	115	193	38	185	809
Griffith	1	149	220	20	28	3	0	2	214	59	102	132	95	94	8	84	500
Gundagai	0	8	5	4	2	0	0	0	6	9	5	10	7	4	2	31	20
Gunnedah	0	75	104	6	9	1	1	0	88	72	26	95	25	74	2	27	226
Guyra	0	26	31	8	4	0	0	0	13	22	8	13	1	18	2	6	79
Gwydir	0	7	24	3	1	0	0	0	14	14	2	8	4	23	1	6	44
Harden	0	8	11	2	1	0	0	0	7	8	2	7	5	11	1	3	25
Hawkesbury	0	254	304	45	47	18	2	14	285	155	232	271	126	179	25	208	1,049
Hay	0	24	13	2	5	0	0	0	8	19	3	6	0	8	0	12	28
Holroyd	0	423	429	54	65	92	26	39	798	147	467	520	184	257	115	714	1,077
Hornsby	6	188	333	43	81	41	4	20	491	246	158	557	261	216	75	473	1,278
Hunters Hill	0	18	36	1	7	0	3	1	38	14	19	52	2	28	0	33	108
Hurstville	0	183	231	22	37	67	8	39	302	106	215	415	324	139	83	320	780
Inverell	0	97	159	23	19	0	0	0	94	53	15	62	80	106	5	32	350
Jerilderie	0	3	7	0	0	0	0	0	7	4	3	4	2	7	0	6	20
Juneee	1	35	36	10	7	0	0	0	28	46	11	30	5	29	1	8	107
Kempsey	0	193	230	26	29	8	2	6	362	175	162	176	44	196	21	67	506
Kiama	0	33	56	4	10	4	0	0	61	31	26	144	11	46	6	19	163
Kogarah	0	153	149	15	23	40	6	13	198	72	133	274	125	81	37	261	542
Ku-ring-gai	0	63	133	20	52	14	0	11	665	157	68	406	39	214	18	267	709
Kyogle	0	61	82	10	15	1	0	0	56	47	27	26	17	39	2	14	178
Lachlan	0	58	43	7	10	0	0	0	35	39	14	34	4	44	1	9	154
Lake Macquarie	2	740	928	150	149	33	1	17	963	868	725	1,348	578	651	89	627	3,140
Lane Cove	0	24	48	0	8	8	1	3	121	57	39	113	16	37	10	173	195

TABLE 3.3C: NUMBER OF RECORDED CRIMINAL INCIDENTS FOR MAJOR OFFENCES, NSW LGAs, 2009

NSW LGAs 2009	Murder*	Assault - domestic violence related	Assault - non-domestic violence related	Sexual assault	Indecent assault, act of indecency and other sexual offences	Robbery without a weapon	Robbery with a firearm	Robbery with a weapon not a firearm	Break and enter dwelling	Break and enter non-dwelling	Motor vehicle theft	Steal from motor vehicle	Steal from retail store	Steal from dwelling	Steal from person	Fraud	Malicious damage to property
Leeton	0	48	79	7	11	3	0	1	126	96	43	56	17	61	1	15	211
Leichhardt	2	121	240	18	33	16	17	16	265	105	242	601	136	133	70	325	675
Lismore	2	244	358	48	49	10	0	3	171	145	95	242	186	142	38	146	693
Lithgow	0	107	193	22	25	13	0	1	139	68	52	79	44	93	13	68	543
Liverpool	1	712	818	118	113	117	28	79	1,215	316	761	1,234	650	329	193	939	2,062
Liverpool Plains	0	42	44	0	4	2	0	0	20	18	8	16	5	23	1	19	64
Lockhart	0	8	9	4	8	0	0	0	7	22	8	5	0	13	0	0	37
Lord Howe Island	0	0	3	0	0	0	0	0	0	1	1	1	0	0	0	0	4
Maitland	1	286	423	61	52	23	1	12	374	275	303	633	196	312	59	269	1,363
Manly	0	71	275	14	34	11	1	3	149	46	56	189	123	134	90	201	485
Marrickville	0	235	409	38	68	76	17	50	476	195	400	966	210	209	144	614	1,183
Mid-Western Regional	1	97	159	15	39	4	0	0	150	128	72	96	49	125	6	60	470
Moree Plains	1	231	263	23	13	11	0	2	271	171	85	178	104	91	9	49	569
Mosman	0	29	37	5	18	5	2	3	154	19	35	110	26	57	16	84	245
Murray	0	18	24	3	4	0	0	0	33	19	3	21	19	34	6	11	87
Murrumbidgee	0	23	11	0	0	0	0	0	2	14	3	5	2	5	0	2	28
Muswellbrook	0	80	140	12	16	9	1	0	207	106	63	121	30	86	9	49	460
Nambucca	1	110	148	19	24	1	0	1	146	107	64	137	18	84	5	24	303
Narrabri	1	69	87	11	13	0	0	0	85	54	32	92	28	69	1	42	246
Narrandera	0	45	52	4	3	2	0	0	83	69	6	56	24	36	3	28	174
Narromine	1	38	54	5	15	0	0	0	75	52	23	52	10	55	4	10	163
Newcastle	0	611	1,315	100	137	125	3	62	1,426	743	799	1,811	664	690	274	757	3,366
North Sydney	3	92	227	18	22	21	3	13	365	212	100	256	111	139	89	450	562
Oberon	0	18	30	8	4	0	0	0	24	9	10	28	5	19	1	5	62
Orange	1	201	357	27	34	12	0	7	406	119	114	334	179	126	33	89	992
Palerang	0	38	54	3	14	0	0	0	54	35	25	51	14	42	4	27	167
Parkes	0	93	114	18	21	1	0	1	94	66	31	100	21	101	2	37	333
Parramatta	4	658	978	78	119	148	27	101	1,189	325	611	1,045	817	397	263	1,455	1,858
Penrith	0	863	1,244	141	168	112	19	49	966	347	878	1,334	592	420	162	1,046	3,119
Pittwater	0	89	163	16	28	10	0	4	171	115	85	457	66	145	43	192	726
Port Macquarie-Hastings	2	312	494	56	59	18	1	4	294	274	183	489	154	306	47	179	1,192
Port Stephens	0	237	348	50	29	11	0	9	584	313	277	538	153	282	44	189	1,043
Queanbeyan	0	112	155	17	22	5	0	4	200	74	82	235	48	109	22	153	549
Randwick	2	334	599	46	78	89	8	40	777	164	370	817	383	313	187	809	1,374
Richmond Valley	1	157	186	25	27	6	0	1	145	109	86	115	27	115	10	42	459
Rockdale	0	282	338	17	38	79	4	30	350	109	320	477	117	120	53	543	873
Ryde	1	179	245	40	55	27	3	14	347	113	148	407	342	128	84	520	690
Shellharbour	0	176	327	49	34	12	4	11	415	163	222	388	147	170	50	162	1,012
Shoalhaven	0	528	645	89	78	25	0	6	764	300	229	696	260	429	52	181	1,719
Singleton	1	61	101	16	22	3	0	2	122	108	113	156	35	91	7	55	363
Snowy River	0	20	45	4	9	0	0	0	33	45	6	23	9	27	8	68	133
Strathfield	0	81	168	8	23	60	9	31	278	46	160	258	45	78	106	326	299
Sutherland Shire	1	451	773	64	89	56	7	15	586	222	378	789	442	361	184	662	2,591
Sydney	3	866	3,778	202	240	722	43	206	1,584	982	727	4,174	1,900	916	3,592	4,039	3,671
Tamworth Regional	1	316	469	70	70	16	1	3	476	221	162	351	164	271	46	132	1,197
Temora	0	14	39	2	2	1	0	1	27	35	7	18	4	28	0	2	79
Tenterfield	0	34	66	3	8	0	0	0	59	31	12	66	24	45	3	7	83
Tumbarumba	0	10	5	2	2	0	0	0	8	22	5	7	1	7	1	5	28
Tumut Shire	0	43	71	4	4	1	0	0	20	49	13	44	12	21	4	14	200
Tweed	1	279	385	65	54	30	2	6	412	308	218	594	270	376	46	267	1,129
Unincorporated Far West	0	2	8	0	1	1	0	0	7	7	5	5	0	3	1	0	18
Upper Hunter Shire	0	34	45	4	6	0	0	0	37	50	17	29	6	48	1	21	167
Upper Lachlan Shire	0	9	18	1	4	1	0	0	12	22	10	22	4	25	1	8	74
Uralla	1	14	29	4	3	0	0	0	23	11	5	15	7	16	2	8	66
Urana	0	7	6	0	1	0	0	0	4	9	3	4	1	5	0	3	19
Wagga Wagga	0	288	447	47	63	14	0	3	451	271	158	591	202	452	55	194	1,381
Wakool	0	14	11	5	2	0	0	0	5	15	3	4	0	8	0	1	40
Walcha	0	11	16	2	3	0	0	0	11	14	9	8	0	7	0	3	43
Walgett	0	192	161	14	11	1	0	0	179	83	18	69	34	47	3	32	203
Warren	0	32	37	1	5	0	0	0	24	27	6	13	12	34	3	3	123
Warringah	0	237	354	33	78	46	4	8	442	189	187	804	330	301	107	461	1,460
Warrumbungle Shire	0	48	64	9	10	0	0	1	53	61	23	45	12	55	1	44	163
Waverley	0	137	366	16	67	37	7	7	412	113	208	401	418	242	299	730	741
Weddin	0	1	14	1	2	1	0	0	9	15	0	9	1	11	0	2	26
Wellington	0	76	77	18	13	1	0	3	116	44	37	45	27	44	5	18	337
Wentworth	1	91	68	11	12	0	0	0	74	73	38	55	11	52	2	25	138
Willoughby	0	52	170	20	24	23	5	12	323	159	78	273	545	97	83	535	494
Wingecarribee	1	119	232	26	34	4	0	1	154	147	79	155	58	134	21	103	716
Wollondilly	1	137	169	18	31	7	0	5	170	91	93	160	32	103	11	90	565
Wollongong	1	692	1,200	137	140	83	4	36	896	396	615	949	918	571	200	697	3,167
Woollahra	1	83	154	15	20	20	6	9	393	98	134	407	92	180	113	330	527
Wyong	1	749	930	141	135	44	5	11	832	380	530	1,147	451	492	108	417	2,661
Yass Valley	0	33	80	6	15	1	0	0	53	45	26	45	8	52	2	56	188
Young	0	73	97	11	20	0	0	1	64	54	12	52	26	49	4	31	319
Prisons	0	1	657	33	10	0	0	0	0	4	0	3	0	0	1	5	129
<b>NSW</b>	<b>80</b>	<b>25,964</b>	<b>39,985</b>	<b>4,311</b>	<b>5,240</b>	<b>3,750</b>	<b>463</b>	<b>1,660</b>	<b>41,410</b>	<b>19,179</b>	<b>22,322</b>	<b>46,961</b>	<b>20,514</b>	<b>21,225</b>	<b>9,838</b>	<b>34,694</b>	<b>101,236</b>

\* Number of victims.

TABLE 3.3D: NUMBER OF RECORDED CRIMINAL INCIDENTS FOR MAJOR OFFENCES, NSW LGAs, 2008

NSW LGAs 2008	Murder*	Assault - domestic violence related	Assault - non-domestic violence related	Sexual assault	Indecent assault, act of indecency and other sexual offences	Robbery without a weapon	Robbery with a firearm	Robbery with a weapon not a firearm	Break and enter dwelling	Break and enter non-dwelling	Motor vehicle theft	Steal from motor vehicle	Steal from retail store	Steal from dwelling	Steal from person	Fraud	Malicious damage to property
Albury	0	260	445	45	65	28	1	7	702	344	267	782	170	335	52	240	1,355
Armidale Dumaresq	0	127	195	30	26	3	0	1	324	121	69	210	92	95	21	64	557
Ashfield	3	92	134	45	38	35	4	18	193	72	104	292	94	100	68	252	419
Auburn	2	250	460	33	42	131	14	63	437	231	591	881	179	121	139	629	866
Ballina	1	113	222	38	36	7	2	0	274	230	87	302	98	215	30	144	546
Balranald	0	15	17	3	2	0	0	0	6	13	3	17	4	14	1	12	40
Bankstown	0	553	825	67	79	121	29	78	914	465	1,245	1,678	492	301	164	1,678	2,115
Bathurst Regional	3	215	285	41	57	11	0	2	280	137	100	297	98	163	23	112	828
Baulkham Hills	3	298	426	36	70	41	2	21	910	278	287	878	388	287	98	727	1,449
Bega Valley	3	102	162	32	37	2	0	0	97	210	49	163	59	93	2	58	463
Bellingen	0	22	41	5	8	0	1	1	44	59	13	57	5	43	1	13	164
Berrigan	0	14	19	5	10	0	0	0	31	55	18	13	3	36	0	7	113
Blacktown	1	1,629	2,062	197	222	277	17	113	2,578	623	1,447	2,338	1,173	882	369	2,870	5,756
Bland	0	35	35	7	9	0	0	1	27	44	5	22	3	28	0	35	89
Blayney	1	27	24	2	3	0	0	0	9	13	12	19	5	17	0	8	109
Blue Mountains	2	208	332	38	46	27	1	9	254	190	112	304	62	178	50	221	1,487
Bogan	0	19	41	4	4	0	0	0	13	20	10	16	2	13	0	5	80
Bombala	0	8	10	3	1	0	0	0	16	6	4	13	1	8	0	7	32
Boorowa	0	10	5	2	1	0	0	0	6	8	3	3	0	6	1	3	11
Botany Bay	0	143	226	13	24	43	3	15	211	78	215	480	129	99	113	442	543
Bourke	0	113	88	11	12	3	0	0	71	27	33	48	22	36	6	8	245
Brewarrina	0	60	67	1	4	1	0	2	45	18	16	16	0	12	2	4	82
Broken Hill	1	174	161	20	22	2	0	1	279	116	59	196	31	131	5	54	545
Burwood	1	91	149	12	22	59	3	17	186	85	123	342	375	129	143	434	392
Byron	0	106	276	24	32	9	0	2	200	147	87	220	85	204	87	89	644
Cabonne	0	31	54	19	7	4	0	0	76	34	20	82	24	41	4	21	147
Camden	1	147	183	23	25	11	2	11	192	113	131	197	80	114	12	217	746
Campbelltown	0	986	1,352	124	138	166	13	66	1,271	450	853	1,357	565	480	173	875	3,727
Canada Bay	1	102	187	15	31	25	4	17	371	97	244	609	73	114	49	403	550
Canterbury	1	364	472	54	61	149	20	68	555	214	606	989	243	167	142	714	1,229
Carrathool	0	22	31	1	5	0	0	0	12	7	6	10	2	13	0	3	41
Central Darling	1	90	34	8	3	0	0	0	53	12	14	12	0	7	0	17	43
Cessnock	0	230	313	51	43	9	1	2	319	268	284	343	89	234	28	219	898
Clarence Valley	0	176	279	40	47	6	0	3	326	314	129	261	98	238	21	106	882
Cobar	0	35	50	4	8	1	0	0	29	33	7	27	14	19	0	21	125
Coffs Harbour	0	314	473	53	55	22	1	10	378	440	203	612	224	295	59	165	1,079
Conargo	0	4	7	0	1	0	0	0	10	12	1	5	0	8	1	1	42
Coolamon	0	15	15	4	7	0	0	0	9	19	8	3	2	13	0	6	42
Cooma-Monaro	1	34	75	8	9	0	0	0	53	38	6	28	18	42	0	28	202
Coonamble	0	32	70	6	6	0	0	0	83	49	11	56	11	16	5	9	183
Cootamundra	0	29	47	7	13	0	0	0	18	22	6	23	8	42	3	21	115
Corowa Shire	0	36	32	5	12	0	0	0	37	34	13	30	13	54	5	12	145
Cowra	3	68	111	11	22	3	0	2	156	130	14	143	17	69	6	33	321
Deniliquin	0	38	38	5	7	0	0	0	36	43	11	24	11	44	1	15	133
Dubbo	1	280	404	35	71	12	1	7	362	196	176	451	188	245	37	161	1,091
Dungog	0	16	28	4	3	0	0	0	32	31	8	21	1	20	2	5	62
Eurobodalla	4	150	255	23	38	4	0	3	220	191	110	306	112	144	17	101	556
Fairfield	5	659	903	72	89	130	13	77	1,077	416	882	1,326	408	274	179	1,148	1,999
Forbes	0	64	105	6	9	3	0	0	114	106	10	118	11	102	4	34	337
Gilgandra	0	28	38	10	7	1	0	0	19	25	15	25	14	39	1	19	119
Glen Innes Severn	0	36	66	6	14	1	0	0	36	33	14	34	24	48	2	16	182
Gloucester	0	29	25	6	5	2	1	0	16	10	6	14	0	12	1	8	41
Gosford	1	500	916	99	119	58	1	24	944	559	522	1,380	530	511	192	552	2,815
Goulburn Mulwaree	0	125	187	15	38	5	0	1	127	67	51	90	49	99	9	93	539
Great Lakes	0	226	221	35	36	10	0	12	370	247	95	176	95	170	28	145	616
Greater Hume Shire	0	27	24	9	5	1	0	1	41	46	17	35	9	30	1	26	81
Greater Taree	0	257	369	53	43	10	0	6	537	264	170	224	119	218	28	185	852
Griffith	0	128	231	32	28	7	0	2	183	74	50	76	63	80	12	88	536
Gundagai	0	20	22	1	2	0	0	0	5	12	1	11	4	8	1	27	28
Gunnedah	1	74	136	7	17	5	0	2	131	70	36	78	27	79	4	35	291
Guyra	0	23	19	4	2	0	0	0	9	12	7	10	3	13	0	5	95
Gwydir	0	17	37	3	7	0	0	0	19	18	7	19	7	27	0	11	60
Harden	0	15	21	4	3	0	0	0	15	17	5	11	0	5	0	8	38
Hawkesbury	0	195	335	34	42	19	1	10	386	186	201	334	97	176	27	219	1,135
Hay	0	6	13	3	4	0	0	0	2	9	4	16	2	10	0	14	33
Holroyd	1	390	467	59	66	84	20	49	881	161	519	805	198	192	116	707	1,246
Hornsby	2	231	347	33	84	48	4	12	596	269	220	780	317	190	80	524	1,318
Hunters Hill	0	23	35	2	1	5	0	2	72	33	22	101	3	33	1	52	168
Hurstville	0	193	275	17	31	97	4	30	355	157	251	591	209	119	76	369	928
Inverell	2	110	177	23	28	1	0	2	106	40	17	77	94	105	4	48	347
Jerilderie	0	3	2	0	1	0	0	0	4	5	1	7	0	8	0	4	8
Junee	0	21	35	5	2	0	0	0	24	24	10	14	6	25	1	11	86
Kempsey	1	287	239	33	25	7	0	5	219	179	130	180	77	183	22	86	687
Kiama	0	28	49	5	7	2	1	1	82	61	33	114	12	45	8	32	175
Kogarah	1	121	169	23	23	46	2	17	248	69	158	345	108	69	58	265	568
Ku-ring-gai	0	77	127	14	32	20	1	13	502	147	78	432	44	207	32	292	718
Kyogle	0	65	97	17	12	1	0	0	26	44	18	26	20	37	4	13	151
Lachlan	0	51	45	4	6	0	0	1	36	54	11	34	5	36	0	11	176
Lake Macquarie	2	706	924	134	116	45	2	31	947	817	787	1,405	503	601	102	628	3,266
Lane Cove	0	33	58	4	5	5	2	1	319	55	60	242	16	65	16	199	212



TABLE 3.3D: NUMBER OF RECORDED CRIMINAL INCIDENTS FOR MAJOR OFFENCES, NSW LGAs, 2008

NSW LGAs 2008	Murder*	Assault - domestic violence related	Assault - non-domestic violence related	Sexual assault	Indecent assault, act of indecency and other sexual offences	Robbery without a weapon	Robbery with a firearm	Robbery with a weapon not a firearm	Break and enter dwelling	Break and enter non-dwelling	Motor vehicle theft	Steal from motor vehicle	Steal from retail store	Steal from dwelling	Steal from person	Fraud	Malicious damage to property
Leeton	0	42	66	14	16	3	0	1	93	92	26	116	17	79	1	21	283
Leichhardt	2	124	274	14	27	33	10	21	355	137	235	665	111	166	73	286	770
Lismore	1	271	450	44	73	41	1	6	203	179	116	252	183	169	49	152	875
Lithgow	0	115	178	16	20	4	0	0	168	97	98	136	45	131	19	49	579
Liverpool	2	623	774	109	114	133	16	70	1,193	398	820	1,804	629	334	218	1,243	2,218
Liverpool Plains	0	28	27	6	6	0	0	0	18	16	8	16	6	9	0	7	51
Lockhart	0	7	7	9	3	0	0	0	12	19	7	16	1	7	0	0	27
Lord Howe Island	0	0	0	0	0	0	0	0	1	1	0	0	0	0	0	0	0
Maitland	0	312	425	73	59	12	6	13	420	397	270	778	146	395	62	382	1,325
Manly	0	62	333	17	30	16	1	4	216	85	99	357	79	171	78	206	526
Marrickville	3	282	435	34	50	139	16	48	576	235	422	1,353	257	231	179	625	1,197
Mid-Western Regional	2	126	155	15	31	3	1	0	100	108	44	95	45	87	7	29	463
Moree Plains	0	244	279	21	24	13	0	1	291	155	73	167	68	96	15	49	550
Mosman	0	26	54	5	13	3	0	4	161	40	67	281	28	79	12	86	183
Murray	0	15	29	4	2	0	0	0	15	26	14	22	7	34	6	17	78
Murrumbidgee	0	9	13	1	3	0	0	0	12	5	8	11	1	9	0	1	18
Muswellbrook	0	76	99	26	22	3	1	3	106	85	33	97	24	62	8	56	402
Nambucca	1	94	188	18	27	8	1	1	112	129	38	156	15	74	12	43	394
Narrabri	1	74	124	18	9	1	0	0	117	43	29	85	34	86	3	45	315
Narrandera	0	46	61	8	9	1	1	0	79	29	14	42	21	33	4	25	194
Narramine	0	44	78	8	11	1	0	0	32	25	14	45	8	38	2	18	153
Newcastle	0	636	1,317	124	146	102	5	71	1,789	1,063	904	2,344	591	739	277	816	3,743
North Sydney	0	93	246	11	38	22	5	13	520	160	135	533	105	153	89	377	503
Oberon	0	6	39	4	4	0	0	0	31	15	11	16	1	14	3	11	100
Orange	2	168	336	52	51	14	1	5	545	144	187	616	182	178	32	139	991
Palerang	0	26	39	11	1	1	0	0	61	38	18	54	1	26	3	28	151
Parkes	0	93	116	16	21	1	0	0	90	123	36	173	26	80	7	31	398
Parramatta	2	558	1,133	70	120	172	24	96	1,252	372	755	1,658	718	313	375	1,615	2,112
Penrith	0	901	1,255	99	170	109	4	53	1,028	451	798	1,393	605	466	200	1,109	3,385
Pittwater	1	78	166	16	26	8	2	0	204	177	99	416	62	133	24	156	634
Port Macquarie-Hastings	0	293	460	41	46	10	0	2	237	197	134	347	179	276	48	181	1,077
Port Stephens	0	254	398	48	41	14	5	5	550	333	255	547	138	325	28	213	1,290
Queanbeyan	1	132	194	26	30	9	0	3	229	84	81	261	41	106	26	115	559
Randwick	1	404	707	33	52	130	11	53	884	193	503	1,058	340	369	203	968	1,681
Richmond Valley	0	160	269	26	33	6	2	2	174	203	85	126	37	111	26	54	531
Rockdale	0	263	317	25	49	108	9	51	331	134	367	602	115	124	61	595	922
Ryde	0	140	308	20	67	46	4	20	421	127	205	564	286	131	104	674	759
Shellharbour	0	246	307	33	37	20	0	13	392	265	260	527	134	182	31	238	1,010
Shoalhaven	0	555	718	67	99	27	1	7	792	481	260	557	187	373	44	220	1,928
Singleton	0	75	119	9	29	3	0	1	92	83	72	141	43	99	7	53	340
Snowy River	1	22	60	4	1	0	0	0	31	26	9	31	12	16	7	45	133
Strathfield	2	89	190	6	22	52	4	39	344	67	180	451	45	73	117	325	336
Sutherland Shire	0	462	923	68	61	56	5	33	618	409	410	1,106	447	360	183	725	2,983
Sydney	3	880	4,280	163	260	913	42	260	1,550	1,290	987	5,683	1,880	923	3,540	4,342	4,394
Tamworth Regional	0	266	508	60	71	24	0	4	418	270	173	432	112	254	30	190	1,295
Temora	0	17	39	1	1	1	0	0	13	41	8	19	3	24	1	6	112
Tenterfield	0	47	80	6	12	2	0	0	59	47	15	44	19	51	6	17	121
Tumbarumba	0	11	24	0	3	0	0	0	4	11	2	12	1	15	1	6	23
Tumut Shire	0	73	74	11	12	0	0	0	30	30	10	72	7	40	4	44	204
Tweed	1	292	379	61	59	15	5	8	414	259	210	472	246	359	53	301	1,098
Unincorporated Far West	0	3	5	1	1	0	0	0	6	1	3	8	3	6	0	4	24
Upper Hunter Shire	0	24	46	10	16	0	0	0	42	63	20	33	6	36	4	19	164
Upper Lachlan Shire	0	11	21	5	8	0	0	0	16	20	8	22	4	17	2	10	83
Uralla	0	16	32	13	8	0	0	0	24	20	4	18	3	25	0	19	55
Urana	0	6	4	1	1	0	0	0	7	7	1	2	0	6	0	1	24
Wagga Wagga	0	254	482	49	46	13	0	5	564	402	211	821	222	396	65	240	1,572
Wakool	0	9	9	5	2	0	0	0	6	14	5	3	4	16	0	12	51
Walcha	0	6	15	3	1	0	0	0	5	10	2	7	1	7	0	0	45
Walgett	1	163	149	15	12	0	0	0	167	85	19	72	24	56	3	21	303
Warren	0	32	40	1	3	0	0	0	15	23	4	13	10	26	0	5	142
Warringham	0	206	356	35	76	28	3	2	365	267	186	743	302	269	83	563	1,388
Warrumbungle Shire	0	53	65	9	12	0	0	0	46	60	13	43	9	42	1	83	187
Waverley	0	156	479	20	46	72	0	21	555	108	290	509	619	218	326	854	917
Weddin	0	9	25	0	3	1	0	0	6	10	0	6	2	16	1	5	42
Wellington	0	60	77	5	10	4	0	2	76	35	18	42	49	48	0	24	233
Wentworth	0	69	69	7	18	2	0	0	61	64	29	44	6	46	0	10	123
Willoughby	1	49	191	7	23	32	5	6	556	148	117	472	480	115	133	598	567
Wingecarribee	0	115	206	23	26	8	1	0	174	151	89	142	83	166	15	188	811
Wollondilly	0	144	194	23	31	6	3	4	148	79	102	134	38	77	14	123	602
Wollongong	1	692	1,219	134	99	99	1	32	1,259	695	615	1,347	744	576	223	885	3,309
Woollahra	0	82	207	8	28	28	4	21	458	85	214	571	100	170	135	379	610
Wyong	0	758	908	111	117	45	4	12	1,055	446	595	1,613	412	533	93	627	3,040
Yass Valley	0	33	64	5	8	2	0	1	45	60	12	52	21	54	5	68	187
Young	0	67	95	9	19	2	0	0	47	50	15	39	27	46	3	36	231
Prisons	0	5	758	16	13	0	0	0	0	3	1	3	0	0	0	5	107
<b>NSW</b>	<b>79</b>	<b>25,533</b>	<b>42,697</b>	<b>4,072</b>	<b>5,131</b>	<b>4,446</b>	<b>375</b>	<b>1,856</b>	<b>44,239</b>	<b>22,923</b>	<b>24,405</b>	<b>57,814</b>	<b>19,894</b>	<b>21,351</b>	<b>10,333</b>	<b>38,856</b>	<b>109,371</b>

\* Number of victims.



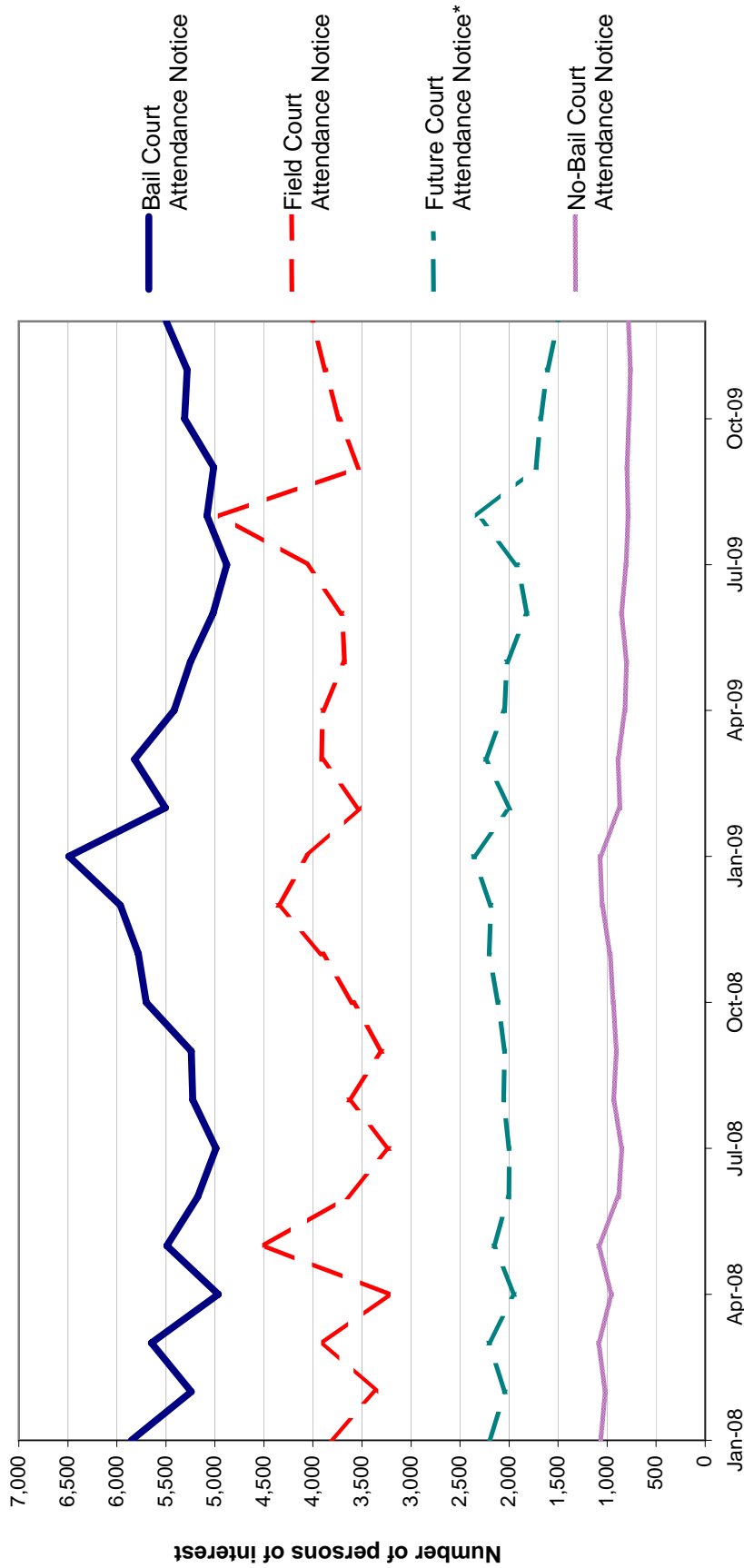
---

**SECTION 4:**

**METHODS OF PROCEEDINGS  
AGAINST ALLEGED OFFENDERS  
2007, 2008 AND 2009**

---

Figure 4.1: TRENDS IN REFERRAL METHODS FOR ALLEGED OFFENDERS PROCEEDED AGAINST TO COURT, NSW, JANUARY 2008 TO DECEMBER 2009



Trends: Future Court Attendance Notice shows a statistically significant downward trend for the 24 month period (down by 7.6%).  
 No-Bail Court Attendance Notice shows a statistically significant downward trend for the 24 month period (down by 14.7%)

\* Due to the time lag between the incident being recorded and the Future CAN being issued some upwards revision of data for the last three months of 2009 is expected.

**TABLE 4.1: NUMBER OF ALLEGED OFFENDERS RECORDED BY NSW POLICE FORCE BY METHOD OF LEGAL PROCEEDINGS  
NSW, 2007-2009**

Type of process	Number of alleged offenders			Trend <sup>^</sup>	
	Jan-Dec 2007	Jan-Dec 2008	Jan-Dec 2009	Annual percentage change Jan 2008 - Dec 2009	Average annual percentage change Jan 2007 - Dec 2009
<b>Proceeded against to court:</b>					
Bail Court Attendance Notice	62,168	65,278	64,558	Stable	Stable
No-Bail Court Attendance Notice	13,599	11,745	10,023	-14.7%	-14.1%
Future Court Attendance Notice	25,256	25,145	23,231	-7.6%	-4.1%
Field Court Attendance Notice	42,950	44,471	46,940	Stable	<b>4.5%</b>
<b>All proceedings to court</b>	<b>143,973</b>	<b>146,639</b>	<b>144,752</b>	Stable	Stable
<b>Proceeded against other than to court:</b>					
Youth Justice Conference	1,721	1,798	1,809	Stable	Stable
Caution <i>Young Offenders Act</i>	10,564	11,368	10,690	Stable	Stable
Cannabis/other drug caution	2,764	3,778	4,411	Stable	<b>26.3%</b>
Criminal Infringement Notice	2,627	8,830	9,944	<b>12.6%</b>	<b>94.6%</b>
Infringement Notice/ Public Safety Infringement Notice	504,907	532,860	537,883	Stable	<b>3.2%</b>
<b>All proceedings other than to court</b>	<b>522,583</b>	<b>558,634</b>	<b>564,737</b>	Stable	<b>4.0%</b>
<b>All proceedings</b>	<b>666,556</b>	<b>705,273</b>	<b>709,489</b>	Stable	<b>3.2%</b>

<sup>^</sup> For further explanation of **trend results**, see page 44, paragraphs 5 and 6.

NOTE: **Warnings** are no longer included in **Section 4: Methods of proceedings against alleged offenders**. Changes to the COPS system on 7 August 2008 restricted this category to formal warnings given under the provisions of the *Young Offenders Act 1997*. Previously this category included formal and informal warnings issued to juveniles and adults. On 10 December 2008, a further change to the COPS system modified how **Young Offenders Act** warnings were recorded, so there is no continuity in the previously published series



---

**SECTION 5:**

**CLEARED CRIMINAL INCIDENTS  
AND WHETHER LEGAL PROCEEDINGS  
COMMENCED FOR SELECTED OFFENCES  
JANUARY 2007 TO SEPTEMBER 2009**

---

**TABLE 5.1: NUMBER OF RECORDED CRIMINAL INCIDENTS FOR SELECTED OFFENCES BY CLEAR UP STATUS AND WHETHER LEGAL PROCEEDINGS COMMENCED, NSW, JANUARY 2007 TO DECEMBER 2007**

Type of offence	Total number recorded	Recorded criminal incidents					
		Cleared within 30 days of reporting			Cleared within 90 days of reporting		
		Total number cleared <sup>#</sup>	Proceedings commenced within 30 days <sup>##</sup>	% proceedings commenced within 30 days	Total number cleared <sup>#</sup>	Proceedings commenced within 90 days <sup>##</sup>	% proceedings commenced within 90 days
Murder*	79	53	49	62.0	58	53	67.1
Assault - domestic violence related	26,620	21,316	14,548	54.7	22,501	15,433	58.0
Assault - non-domestic violence related	41,770	18,278	8,974	21.5	20,434	10,536	25.2
Sexual assault	3,918	657	357	9.1	847	475	12.1
Indecent assault, act of indecency	3,290	788	457	13.9	1,007	618	18.8
Other sexual offences	1,740	489	276	15.9	529	303	17.4
Abduction and kidnapping	339	103	84	24.8	113	94	27.7
Robbery without a weapon	4,628	651	536	11.6	754	629	13.6
Robbery with a firearm	536	64	60	11.2	100	98	18.3
Robbery with a weapon not a firearm	2,262	368	336	14.9	456	421	18.6
Harassment, threatening behaviour and private nuisance	24,540	12,825	4,019	16.4	13,678	4,436	18.1
Break and enter dwelling	46,567	2,043	1,543	3.3	2,563	1,921	4.1
Break and enter non-dwelling	24,316	1,185	934	3.8	1,508	1,176	4.8
Motor vehicle theft	26,592	1,104	919	3.5	1,348	1,090	4.1
Steal from motor vehicle	62,049	1,192	906	1.5	1,408	1,058	1.7
Steal from retail store	18,328	10,175	7,874	43.0	10,603	8,267	45.1
Steal from dwelling	22,295	1,589	531	2.4	1,830	664	3.0
Steal from person	11,653	510	282	2.4	595	336	2.9
Stock theft	554	32	6	1.1	38	9	1.6
Fraud	33,015	3,894	2,395	7.3	5,041	3,360	10.2
Arson	7,099	350	137	1.9	383	163	2.3
Malicious damage to property	107,137	17,946	10,252	9.6	19,443	11,367	10.6

<sup>#</sup> Total number cleared includes both incidents where proceedings were commenced and those where no proceedings were commenced.

<sup>##</sup> This includes incidents where a person was either proceeded against to court or proceeded against other than to court.

\* Victims for whom incident was cleared.



**TABLE 5.2: NUMBER OF RECORDED CRIMINAL INCIDENTS FOR SELECTED OFFENCES BY CLEAR UP STATUS AND WHETHER LEGAL PROCEEDINGS COMMENCED, NSW, JANUARY 2008 TO DECEMBER 2008**

Type of offence	Total number recorded	Recorded criminal incidents					
		Cleared within 30 days of reporting			Cleared within 90 days of reporting		
		Total number cleared #	Proceedings commenced within 30 days ##	% proceedings commenced within 30 days	Total number cleared #	Proceedings commenced within 90 days ##	% proceedings commenced within 90 days
Murder*	79	57	48	60.8	62	53	67.1
Assault - domestic violence related	25,533	20,738	13,899	54.4	21,844	14,641	57.3
Assault - non-domestic violence related	42,697	19,146	9,257	21.7	21,515	10,907	25.5
Sexual assault	4,072	685	378	9.3	905	515	12.6
Indecent assault, act of indecency	3,392	868	482	14.2	1,077	619	18.2
Other sexual offences	1,739	503	275	15.8	564	316	18.2
Abduction and kidnapping	395	123	101	25.6	132	109	27.6
Robbery without a weapon	4,446	798	699	15.7	931	816	18.4
Robbery with a firearm	375	43	43	11.5	63	62	16.5
Robbery with a weapon not a firearm	1,856	339	306	16.5	445	409	22.0
Harassment, threatening behaviour and private nuisance	24,774	13,424	4,424	17.9	14,367	4,807	19.4
Break and enter dwelling	44,239	2,188	1,667	3.8	2,734	2,084	4.7
Break and enter non-dwelling	22,923	1,087	901	3.9	1,378	1,118	4.9
Motor vehicle theft	24,405	1,051	852	3.5	1,307	1,046	4.3
Steal from motor vehicle	57,814	1,119	808	1.4	1,322	953	1.6
Steal from retail store	19,894	10,504	8,190	41.2	11,076	8,699	43.7
Steal from dwelling	21,351	1,548	529	2.5	1,754	663	3.1
Steal from person	10,333	535	334	3.2	641	421	4.1
Stock theft	553	28	6	1.1	34	10	1.8
Fraud	38,856	4,167	2,619	6.7	5,532	3,763	9.7
Arson	7,293	366	155	2.1	405	179	2.5
Malicious damage to property	109,371	18,274	10,714	9.8	19,927	11,880	10.9

# Total number cleared includes both incidents where proceedings were commenced and those where no proceedings were commenced.

## This includes incidents where a person was either proceeded against to court or proceeded against other than to court.

\* Victims for whom incident was cleared.

**TABLE 5.3: NUMBER OF RECORDED CRIMINAL INCIDENTS FOR SELECTED OFFENCES BY CLEAR UP STATUS AND WHETHER LEGAL PROCEEDINGS COMMENCED, NSW, JANUARY 2009 TO SEPTEMBER 2009**

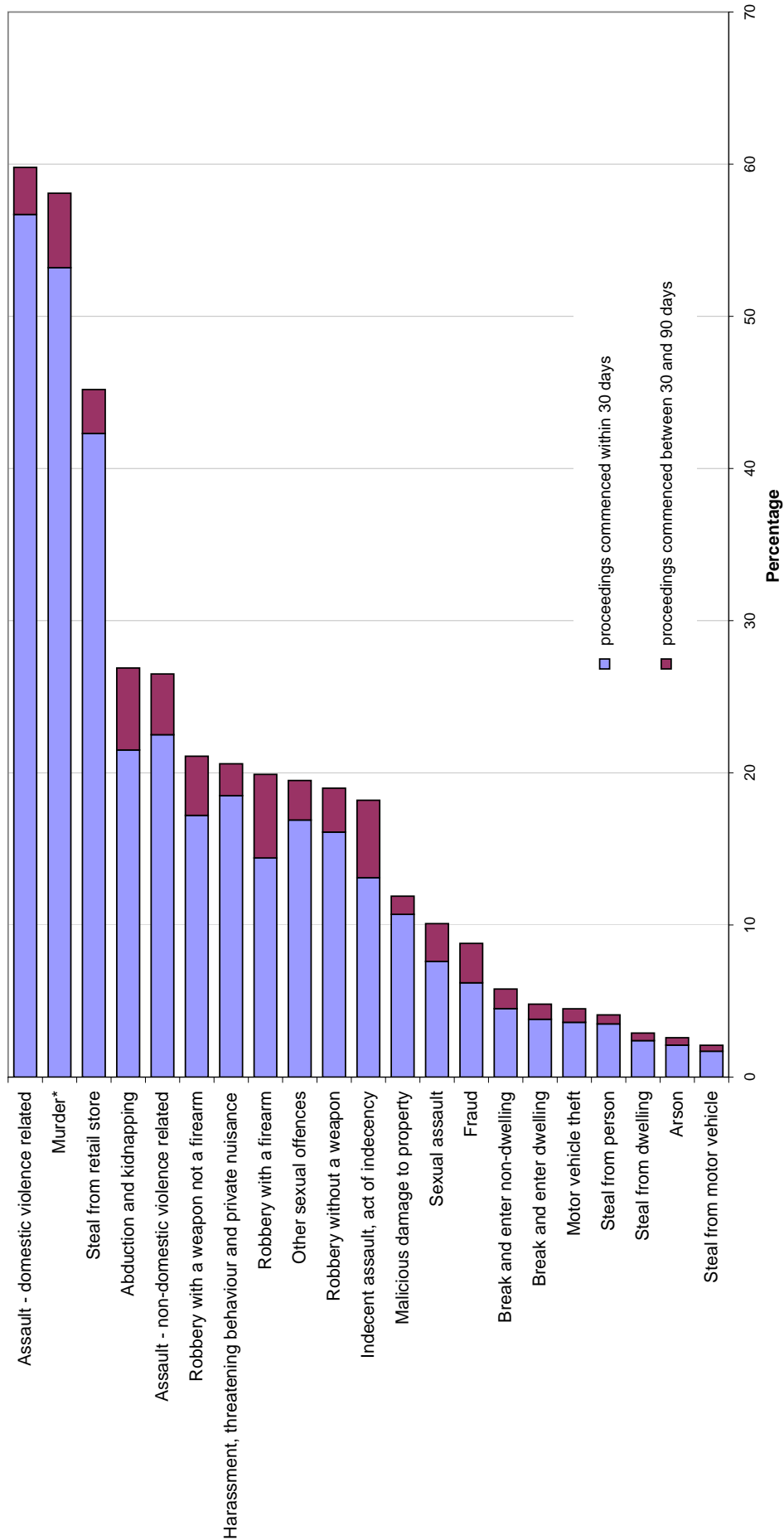
Type of offence	Total number recorded	Recorded criminal incidents					
		Cleared within 30 days of reporting			Cleared within 90 days of reporting		
		Total number cleared#	Proceedings commenced within 30 days##	% proceedings commenced within 30 days	Total number cleared#	Proceedings commenced within 90 days##	% proceedings commenced within 90 days
Murder*	62	36	33	53.2	39	36	58.1
Assault - domestic violence related	19,178	15,499	10,871	56.7	16,475	11,462	59.8
Assault - non-domestic violence related	29,527	13,230	6,629	22.5	15,141	7,838	26.5
Sexual assault	3,244	527	246	7.6	751	327	10.1
Indecent assault, act of indecency	2,805	693	367	13.1	955	511	18.2
Other sexual offences	1,106	337	187	16.9	396	216	19.5
Abduction and kidnapping	260	70	56	21.5	86	70	26.9
Robbery without a weapon	2,858	527	460	16.1	617	542	19.0
Robbery with a firearm	361	56	52	14.4	78	72	19.9
Robbery with a weapon not a firearm	1,249	231	215	17.2	283	264	21.1
Harassment, threatening behaviour and private nuisance	19,856	10,621	3,681	18.5	11,548	4,084	20.6
Break and enter dwelling	31,087	1,523	1,166	3.8	1,920	1,478	4.8
Break and enter non-dwelling	14,555	779	661	4.5	1,007	842	5.8
Motor vehicle theft	16,906	755	614	3.6	944	756	4.5
Steal from motor vehicle	35,244	814	605	1.7	992	745	2.1
Steal from retail store	15,445	8,219	6,527	42.3	8,742	6,981	45.2
Steal from dwelling	15,352	1,162	362	2.4	1,358	447	2.9
Steal from person	7,377	421	260	3.5	484	301	4.1
Stock theft	394	16	1	0.3	24	6	1.5
Fraud	26,277	2,584	1,636	6.2	3,603	2,312	8.8
Arson	5,305	281	111	2.1	311	139	2.6
Malicious damage to property	75,488	12,904	8,088	10.7	14,154	8,972	11.9

# Total number cleared includes both incidents where proceedings were commenced and those where no proceedings were commenced.

## This includes incidents where a person was either proceeded against to court or proceeded against other than to court.

\* Victims for whom incident was cleared.

**Figure 5.1: PERCENTAGE OF RECORDED CRIMINAL INCIDENTS FOR SELECTED OFFENCES WHERE LEGAL PROCEEDINGS COMMENCED WITHIN 30 AND 90 DAYS, NSW, JANUARY 2009 TO SEPTEMBER 2009**



\* For murder the data are counts of recorded victims, not criminal incidents.



---

# APPENDICES

---

## APPENDIX 1: TRENDS IN RECORDED CRIMINAL INCIDENTS FOR NSW

[1] Irrespective of how trends in recorded crime are presented, their interpretation is a difficult task. The recorded criminal incident data presented in this report are based on information derived from the NSW Police Force Computerised Operational Policing System (COPS), so only those incidents which are reported to, or detected by, police are included. The trends in recorded crime shown in this report will, therefore, reflect movements in the underlying factors which influence the detection, reporting and recording of crime, as well as changes in the true level of crime in the community.

[2] An alternative measure of the level of crime in Australia is available from crime victim surveys, for example the *Crime Victimization Survey* which is now conducted every year by the Australian Bureau of Statistics (ABS)<sup>1</sup>. As well as providing an estimate of the victimisation rate at the State level for a selected set of offences, this survey measures the proportion of crimes which are not reported to police, and are therefore not recorded in the official statistics. In particular, personal crimes, such as assault and robbery, are less likely to be reported than crimes which involve households. For example, *Crime Victimization Australia, 2008-09* shows that in the twelve-month period to June 2009, while 70.0 per cent of *break and enter offences* in NSW were reported to police, only 39.3 per cent of *physical assault* and 22.7 per cent of *threatened assault* was reported<sup>1</sup>. Given that some offences have low reporting rates, it is possible that changes in recorded crime rates over time for these offences may be reflecting changes in reporting rates.

[3] Public willingness to report crime, however, is just one of the extraneous factors which can affect trends in recorded crime. Shifts in policing policy can also have a marked effect on the number of recorded drug offences, drink driving offences, cases of offensive behaviour or of receiving stolen goods. For these offences, therefore, recorded rates probably do not accurately reflect actual rates. For this reason, the more detailed comparisons of crime rates and examination of trends in this document are restricted to offence categories which are reported to, rather than detected by police.

[4] The interpretation of trends in official reports of crime can be considerably more difficult than the interpretation of trends in unemployment or inflation statistics. The ease with which recorded crime statistics can be misunderstood creates a temptation to offer an authoritative explanation for each major crime trend. Indeed, in many instances it is simply impossible to state with any assurance why a particular trend has appeared. This report, therefore, confines itself to identifying and describing trends in recorded crime, rather than explaining them.

[5] For each offence category or subcategory (except murder), a statistical test for trend was applied to the monthly numbers of recorded criminal incidents over the relevant period to December 2009. In the case of murder, the statistical test for trend was applied to the monthly numbers of victims over the same period. The trend test used was Kendall's rank-order correlation test (see, for example, Conover, W.J. 1980, *Practical Non-Parametric Statistics*, 2nd ed, John Wiley and Sons, pp 256-260). A two-tailed test was used to determine whether there had been an increasing or decreasing trend in the recorded numbers of criminal incidents over the relevant period covered in the report. Some month to month variations in the numbers of recorded incidents could be due in part to seasonal factors. The test for trend is not sensitive to seasonal variations; it is sensitive only to a generally increasing or generally decreasing trend over the time period examined.

[6] For the **trend tests throughout this publication**, where a statistically significant trend was found ( $p < 0.05$ ), the extent of the trend is indicated by percentage change in the total number of recorded criminal incidents between the consecutive 12-month periods January to December 2008 and January to December 2009 for 24 month tests; and the average annual percentage change between the first 12-month period and January to December 2009 for longer tests. A trend test was not performed if there were fewer than 20 incidents in any of the years for the period in question or in the case of LGAs with populations fewer than 3,000. The result ' . ' indicates that a trend test was not performed. A non-significant test result ( $p > 0.05$ ) is denoted by 'Stable' or by 'ns' in some larger LGA tables.

[7] In order to present an overview of crime trends in NSW the information in Section 1 relates to aggregate *violent* and *property* crime. The State graphs for *violent* and *property offences* are plotted as monthly rates<sup>2</sup> per 100,000 population. The State graph for *violent offences* shows distinct seasonality and the 12-month moving average (light grey line) indicates a slight downward path over the past few years, whilst the *property offences* graph and the 6-month moving average (light grey line) both indicate a strong downwards path since about 2000. Violent offences include: *murder, assault - domestic violence related, assault - non-domestic violence related, assault police, robbery without a weapon, robbery with a firearm, robbery with a weapon not a firearm, sexual assault and indecent assault / act of indecency / other sexual offences*. Property offences include: *break and enter dwelling, break and enter non-dwelling, motor vehicle theft, steal from motor vehicle, steal from retail store, steal from dwelling, steal from person, stock theft, other theft and fraud*.

[8] The ratio to NSW rate statistics are a comparison of a NSW regional rate per 100,000 population to the NSW rate per 100,000 population. A ratio of one indicates parity with the state rate. Ratios indicating double the NSW rate (or more) before rounding are highlighted in red, whilst ratios indicating half the state rate (or less) before rounding are highlighted in yellow.

1. Australian Bureau of Statistics 2009, *Crime Victimization Australia, 2008-09*, page 15, Cat. No. 4530.0, ABS, Sydney.

2. For the **rate calculations throughout this publication**, population data were obtained from the Australian Bureau of Statistics publication: *Regional Population Growth Australia 2007-08* Cat. No. 3218 (for 2007 and 2008 population estimates). As no population estimates were available for 2009 when this report was published, rates for 2009 were calculated using 2008 population estimates.

## APPENDIX 2: DEFINITIONS AND EXPLANATORY NOTES

The data in this report are extracted from the NSW Police Computerised Operational Policing System (COPS). This system is used for record-keeping for all police operations, not just for criminal matters.

In this report:

- the counting units are recorded *criminal incidents* rather than recorded *offences* (except for murder and manslaughter, where the counting units are victims); and
- the data are categorised by date of *reporting* to police (or date of detection by police) rather than by date of *occurrence* of the offence.
- Prior to August 2008, if police suspected a criminal incident reported to them did not occur they could record it as 'doubtful'. In the past BOCSAR's recorded crime statistics have included 'accepted' and 'doubtful' incidents. In August 2008 NSW Police removed the 'doubtful' category from COPS, instead directing police officers to categorise these incidents as 'accepted' unless evidence existed to indicate the crime did not occur. In which case the incident would be categorised as 'rejected'. Thus recorded crime statistics from August 2008 to the present have not contained 'doubtful' incidents. In order to present a continuous series BOCSAR have decided to retrospectively limit recorded crime statistics to only 'accepted' incidents. To do this we have removed the 'doubtful' incidents from crime data from January 1995 to August 2008. There will therefore be a slight revision to incident counts recorded prior to 2008. This means that reports from 2009 onwards will differ slightly in some offence counts from those in reports published prior to 2009.

### RECORDED CRIMINAL INCIDENTS

A criminal incident is defined as an activity detected by or reported to police which:

- involved the same offender(s);
- involved the same victim(s);
- occurred at the one location;
- occurred during one uninterrupted period of time;
- falls into one offence category;
- falls into one incident type (for example, 'actual', 'attempted', 'conspiracy').

One incident may involve two offenders assaulting the same victim. This would be recorded as one assault incident. Alternatively, suppose a man reports to police that he found his neighbour in the process of damaging his car and, when confronted, the neighbour assaulted him. For such an event, two criminal incidents are recorded because two distinct offence types are involved (malicious damage to property and assault) even though the same parties were involved at the same time and in the same place.

### RECORDED VICTIMS

For murder and manslaughter only, the counting units used are victims. Under the definition of a criminal incident (same parties, same time, same place, same offence and same incident type) one murder or manslaughter incident could involve two or more persons being killed. Because of the seriousness of these offences and their relatively small numbers, it is considered to be more appropriate to count the number of victims, rather than the number of criminal incidents. Hence, where one murder incident involves a person killing six people, six murder victims are counted.

### OFFENCE CATEGORIES

The classification of offences in this report is broadly based on the Australian Standard Offence Classification (ASOC) devised by the Australian Bureau of Statistics (*ABS 2008, second edition, Cat. No. 1234.0*).

For all type of offence classifications used in the report, Appendix 3 lists the offence categories included in the classification. The original offence categories are those used by the NSW Police Force and do not necessarily correspond exactly with offences defined in legislation.

## APPENDIX 2: DEFINITIONS AND EXPLANATORY NOTES *continued*

### MAJOR OFFENCE CATEGORIES

Major offence categories include the most serious personal violence and property offences. The most serious of these offences is *murder* for which the incident count is the number of victims. Assault offences include the two major offence categories of *domestic violence related assault* and *non-domestic violence related assault*. Note that since 2008, the offence *Assault Police* has been separately identified from the two major assault categories. All sexual offences are categorised by the two major offence types, either as *sexual assault* or *indecent assault, act of indecency and other sexual offences*.

Robbery offences are sorted into three categories by use of weapon as: *robbery with a firearm*, *robbery with a weapon not a firearm* or *robbery without a weapon*. The serious theft offences in this group start with the burglary categories of *break and enter - dwelling* and *break and enter - non-dwelling* followed by *motor vehicle theft* and *steal from motor vehicle*. Other theft offences included in the 17 major offences are *steal from retail store*, *steal from dwelling*, *steal from person* and *fraud*. The final property offence listed as a major offence is *malicious damage to property*.

### COUNTING PERIOD

Criminal incidents are included in the counting period in which they were reported to or detected by police.

In most cases criminal incidents are recorded on COPS on the day of reporting. However there may be some time delay before the incident gains the status of accepted and verified (which are necessary conditions for inclusion in this report). It is therefore possible for some updating of data to occur. That is, data extracted for a specified period of time (incidents reported in 2008, for example), may differ according to the date of extraction of the data.

### PROCEEDINGS AGAINST ALLEGED OFFENDERS

Police may proceed against alleged offenders through a variety of legal or other processes. Most alleged offenders are referred to the NSW Criminal Courts. The more serious offences are dealt with by way of a Bail Court Attendance Notice (known as a Charge prior to July 2003) or a No-Bail Court Attendance Notice (known as a Court Attendance Notice (CAN) prior to July 2003). In these instances, the alleged offender is arrested, taken to a police station, fingerprinted and the details of the person and all charges are recorded. Alternatively a Field Court Attendance Notice may be issued by police at other locations. A Future Court Attendance Notice (previously called a Summons) is used for less serious offences. Due to the time lag between the incident being recorded and the Future CAN being issued, data for the last three months are likely to be low and subject to future revision.

Some alleged offenders are proceeded against but diverted from the criminal court system. For many minor offences police can issue Infringement Notices. By paying the prescribed penalty the offender avoids having to go to court. Under the *Young Offenders Act 1997*, a juvenile offender can be issued with either a warning, a caution or referred to a youth justice conference.

A youth justice conference is a face-to-face meeting between offenders, victims and their support persons. The offending behaviour is discussed and an outcome plan for the offender negotiated. Note that both the police and the courts can refer a young person to a youth justice conference. However, the number of alleged offenders proceeded against by way of a youth justice conference, as shown in Table 4.1 includes only police referrals to a youth justice conference.

Each offender or alleged offender appears only once in the table for each event. Note that multiple criminal incidents may be associated with a single event. The processes are arranged in a hierarchy with the offender or alleged offender appearing in the most serious category where multiple incidents are involved. For example if an event involves two incidents and the alleged offender is charged for one incident but receives a warning for the second incident, the alleged offender appears only in the relevant '*proceeded against to court*' category.



## APPENDIX 2: DEFINITIONS AND EXPLANATORY NOTES *continued*

### PROCEEDINGS AGAINST ALLEGED OFFENDERS *continued*

Note that in these tables, the year refers to the year in which the criminal incident or incidents were reported to police. For example, if an incident was reported to police in 2007 but the alleged offender was not apprehended and charged until 2008, the charge is recorded for 2007. This section also includes a figure showing trends over 24 months in methods of proceeding against offenders and alleged offenders which lead to attendance at court. Alleged offenders who are not legally proceeded against are not included in this report.

### CLEARED CRIMINAL INCIDENTS

A cleared criminal incident is one, which, in the view of police, has been satisfactorily cleared by the commencement of legal proceedings or otherwise.

An incident is cleared by the commencement of legal proceedings when police have laid a charge or an information against at least one person. The information may have been laid with a view to the issuing of a warrant, Future CAN or other process for the purpose of bringing an offender before the court.

A criminal incident is cleared other than by commencement of legal proceedings when, under normal circumstances, a charge or information would have been laid against at least one person, but, for a variety of reasons, police have been unable to make an arrest, despite knowing the identity of the offender and having sufficient evidence to support a charge. Examples of situations in which an offence may be cleared other than by charge include the following:

- the offender is a juvenile and is cautioned;
- the offender has died before a charge is made or information laid;
- the offender has been committed to a psychiatric institution and is unlikely to be released;
- there is an obstacle to charging, such as diplomatic immunity;
- the complainant or essential witness is dead and proceedings would be aborted;
- the offender is serving a sentence and police consider that no useful purpose would be served by prosecution.

The offence types included in these tables are those where the crime is likely to have been reported to police, rather than discovered or detected by police. Offence types where the numbers of recorded criminal incidents are influenced by police law enforcement activity (drug offences, for example) are excluded. For such offence types, the clear-up percentages are very high because clearing the offence generally occurs simultaneously with its detection (that is, an arrest is made when the crime is discovered). This report contains criminal incidents cleared within 30 and 90 days after the incident was reported to the NSW Police Force.

Because the data for this report were extracted early in February 2010, the clear-up status after 90 days could not be determined for any offences reported in the last three months of 2009. Hence, the clear-up data for 2009 are for the first nine months of the year only.

### REGIONAL STATISTICS

Statistics are provided on the number of criminal incidents (victims for murder) recorded for each of the Statistical Divisions of NSW as defined by the Australian Bureau of Statistics (ABS). Within the Sydney Statistical Division, statistics are provided for Statistical Subdivisions.

Recorded criminal incidents which occurred in correctional, detention or remand centres, however, are not counted in the Statistical Division in which the incident occurred. Appendix 4 provides maps indicating the location of each Statistical Division and Sydney Statistical Subdivision. Appendix 5 lists the Local Government Areas (LGAs using 2008 boundaries) within each of the Sydney Statistical Subdivisions and regional Statistical Divisions. Note that LGA boundaries change from time to time and that the current list differs from that stated in the 2004 NSW recorded crime report. A criminal incident is counted within a particular region when the location of the offence falls within that region.

For the rate calculations, population data were obtained from the Australian Bureau of Statistics publication: *Regional Population Growth, Australia, 2007-08*, Cat. No. 3218.0 (for 2007 and 2008 population estimates). As no population estimates were available for 2009 when this report was published, rates for 2009 were calculated using 2008 population estimates.

**APPENDIX 3: BOCSAR OFFENCES MAPPED TO POLICE INCIDENT CATEGORIES**

<b>BOCSAR offence</b>	<b>NSW Police Force offence incident categories</b>
<b>Homicide:</b>	
Murder	Murder – actual
Attempted murder	Murder – attempted Shoot with intent to murder
Murder accessory, conspiracy	Murder accessory Murder conspiracy
Manslaughter – not driving	Manslaughter
Driving causing death	Manslaughter Major motor vehicle accident - Injury or fatal crash Driving complaint
<b>Assault:</b>	
	<i>Includes any of the following offences where police have flagged the incident as domestic violence related or non-domestic violence related:</i>
Domestic violence related	Actual bodily harm Grievous bodily harm (including malicious wounding) Common assault Shoot with intent other than to murder Spike drink/food
Non-domestic violence related	Actual bodily harm Grievous bodily harm (including malicious wounding) Common assault Shoot with intent other than to murder Spike drink/food
Assault Police	Resist / hinder / assault Police officer
<b>Sexual offences:</b>	
Sexual assault	Sexual assault Aggravated sexual assault Assault with intent to have sexual intercourse
Indecent assault, act of indecency	Indecent assault Aggravated indecent assault Act of indecency Aggravated act of indecency
Other sexual offences	Incest Carnal knowledge Wilful and obscene exposure Indecent communication Peep or pry Bestiality Other sexual offence Grooming / procuring
<b>Abduction and kidnapping</b>	Abduction / kidnapping

### APPENDIX 3: BOCSAR OFFENCES MAPPED TO POLICE INCIDENT CATEGORIES

<b>BOCSAR offence</b>	<b>NSW Police Force offence incident categories</b>
<b>Robbery:</b>	
Robbery without a weapon	<i>Includes any of the following offences in which no weapon was recorded:</i> Robbery Robbery with aggravation Demand money with menaces Robbery with wounding Other robbery
Robbery with a firearm	<i>Includes any of the following offences in which a firearm was recorded as a weapon:</i> Robbery Armed robbery Robbery with aggravation Demand money with menaces Robbery with wounding Other robbery
Robbery with a weapon not a firearm	<i>Armed robbery where a firearm was not recorded as a weapon or any of the following offences in which a weapon other than a firearm was recorded:</i> Robbery Robbery with aggravation Robbery with wounding Demand money with menaces Other robbery
<b>Blackmail and extortion</b>	Extortion / blackmail
<b>Harassment, threatening behaviour and private nuisance</b>	Intimidation ( <i>includes threatening behaviour, stalking</i> ) Threats against Police Telecommunications offence ( <i>includes nuisance phone calls</i> )
<b>Other offences against the person</b>	Malicious damage intent injure / endanger Negligent act cause grievous bodily harm Other offence against the person
<b>Theft:</b>	
Break and enter – dwelling	<i>Dwelling includes premises where people reside such as house, home unit, caravan, tent as well as any attachment such as garage, shed, yard and garden.</i> Break, enter and steal Break, enter intent to steal Break, enter and commit other felony Break, enter, intent to commit other felony
Break and enter – non-dwelling	<i>Non-dwelling includes commercial and government premises.</i> Break, enter and steal Break, enter intent to steal Break, enter and commit other felony Break, enter and intent to commit other felony

**APPENDIX 3: BOCSAR OFFENCES MAPPED TO POLICE INCIDENT CATEGORIES**

<b><i>BOCSAR offence</i></b>	<b><i>NSW Police Force offence incident categories</i></b>
<b>Theft continued:</b>	
Receiving or handling stolen goods	Receiving Goods in custody Possess property stolen outside NSW
Motor vehicle theft	Theft of motor cars, motor cycles, and other vehicles Rebirthing vehicles
Steal from motor vehicle	Steal from motor vehicle
Steal from retail store	Steal from retail store
Steal from dwelling	Steal from dwelling Other stealing <i>occurring in a residential dwelling</i>
Steal from person	Steal from person
Stock theft	Steal stock (animal)
Fraud	Larceny clerk / servant / bailee Make / use false instrument Embezzlement Fraudulent misappropriation Company / corporate offence Deception offence Possess false instrument Publish false misleading statement Corrupt commission / practices Counterfeit currency Other fraud Computer crime Copyright/Intellectual property / Trademark Fail to pay Misappropriate cheques / funds Corrupt payment (receive or pay) Receiving (fraud related)
Other theft	Steal from marine vessel Steal vessel Other stealing <i>occurring somewhere other than a residential dwelling</i> (eg at temporary accommodation, business / commercial premises, in outdoor / public places, recreation premises)
<b>Arson</b>	Bushfire Fire of structure, commodity, or vehicle (eg. aircraft / motor vehicle / train / vessel)
<b>Malicious damage to property</b>	Malicious damage to property Graffiti Public place – damage fountain / wall etc. Public place – damage shrine / monument

**APPENDIX 3: BOCSAR OFFENCES MAPPED TO POLICE INCIDENT CATEGORIES**

<b><i>BOCSAR offence</i></b>	<b><i>NSW Police Force offence incident categories</i></b>
<b>Drug offences:</b>	
Possession and / or use of cocaine	Possess drug <i>where drug type is cocaine</i> Use or administer drug <i>where drug type is cocaine</i>
Possession and / or use of narcotics	Possess drug <i>where drug type is narcotics</i> Use or administer drug <i>where drug type is narcotics</i>
Possession and / or use of cannabis	Possess drug / plant <i>where drug type is cannabis</i> Use or administer drug <i>where drug type is cannabis</i>
Possession and / or use of amphetamines	Possess drug <i>where drug type is amphetamines</i> Use or administer drug <i>where drug type is amphetamines</i>
Possession and / or use of ecstasy	Possess drug <i>where drug type is ecstasy</i> Use or administer drug <i>where drug type is ecstasy</i>
Possession and / or use of other drugs	Possess drug <i>where drug type is not cocaine, narcotics, cannabis, amphetamines or ecstasy</i> Use or administer drug <i>where drug type is not cocaine, narcotics, cannabis, amphetamines or ecstasy</i>
Dealing, trafficking in cocaine	Supply drug <i>where drug type is cocaine</i>
Dealing, trafficking in narcotics	Supply drug <i>where drug type is narcotics</i>
Dealing, trafficking in cannabis	Supply drug / plant <i>where drug type is cannabis</i>
Dealing, trafficking in amphetamines	Supply drug <i>where drug type is amphetamines</i>
Dealing, trafficking in ecstasy	Supply drug <i>where drug type is ecstasy</i>
Dealing, trafficking in other drugs	Supply drug <i>where drug type is not cocaine, narcotics, cannabis, amphetamines or ecstasy</i>
Cultivating cannabis	Cultivation
Manufacture drug	Manufacture drug
Importing drugs	Import drug / plant
Other drug offences	Forge and / or utter prescription Possess drug utensil Other drug detection / seizure offence

**APPENDIX 3: BOCSAR OFFENCES MAPPED TO POLICE INCIDENT CATEGORIES**

<b><i>BOCSAR offence</i></b>	<b><i>NSW Police Force offence incident categories</i></b>
<b>Prohibited and regulated weapons offences</b>	Possess whilst unlicensed Possess shortened firearm Possess prohibited weapon / article Shorten firearm Firearms, dealer offence Unlawfully discharge firearm Trespass with firearm Use firearm under influence Discharge firearm into premises Other firearm offence Other firearm licensing offence Firearms, not ensure safekeeping Use prohibited weapon / article Sell prohibited weapon / article Other prohibited weapon / article offence Bomb hoax or threat Possess explosive / dangerous article Item / object / found where item / object is a weapon Explosives licensing offence Unlawful handling/access/supply of explosives Improper storage of explosives Other explosives offence
<b>Disorderly conduct:</b>	
Trespass	Trespass Remain in closed lands
Offensive conduct	Offensive conduct
Offensive language	Offensive language
Criminal intent	Enter land with intent Armed with intent Disguised with intent Intent to repeat indictable offence Possess implements
<b>Betting and gaming offences</b>	Own / manage premises – gaming Own / manage premises – betting Conduct / play illegal game/betting Other gaming offence
<b>Liquor offences</b>	Consume alcohol in public by minor Consume alcohol in alcohol-free zone Liquor Act offence – Supply liquor to juvenile Liquor Act offence by minor, customer, employee or licensee Registered Clubs Act offence by minor, customer, employee, secretary or club
<b>Pornography offences</b>	Possess / disseminate child pornography Possess / publish indecent material Censorship offences

**APPENDIX 3: BOCSAR OFFENCES MAPPED TO POLICE INCIDENT CATEGORIES**

<b><i>BOCSAR offence</i></b>	<b><i>NSW Police Force offence incident categories</i></b>
<b>Prostitution offences</b>	Soliciting / prostitution in public Prostitution – premises Prostitution – live off earnings Consorting Child prostitution Other vice offence
<b>Against justice procedures:</b>	
Escape Custody	Escapee - Department of Community Services custody Escapee – Corrective Services custody Escapee – Police custody Escapee – Other custody
Breach Apprehended Violence Order	Breach Apprehended Violence Order – domestic Breach Apprehended Violence Order – personal
Breach bail conditions	Breach bail conditions
Fail to appear	Fail to appear
Resist or hinder officer	Resist/hinder officer Refuse to be searched Refuse to produce object Refuse direction drug related / not drug related Refuse direction intoxicated person Refuse for vehicle to be searched
Other offences against justice	Other judicial offence Contravene Child Protection Prohibition Order (CPPO)
<b>Transport regulatory offences</b>	Transport offence ( <i>includes offences on the rail network such as travelling without a valid ticket, smoking, drinking or using offensive language on a train or railway land</i> )
<b>Other offences</b>	Immigration / customs offence Animals – dog offences Family law offence Obstruction Public mischief Offence against transport service Other street offences Other miscellaneous offences  Offences under various acts: Acts administered by the Waterways Authority of NSW <i>Australian Postal Corporation Act 1989 (Cwlth)</i> <i>Children and Young Persons (Care and Protection) Act 1998</i> <i>Children (Care and Protection) Act 1987 (NSW)</i> <i>Companion Animals Act 1998 (NSW)</i> <i>Family Law Act 1975 (Cwlth)</i> <i>Local Government Act 1993 (NSW)</i> <i>Pawnbrokers and Second-hand Dealers Act 1997 (NSW)</i> <i>Prevention of Cruelty to Animals Act 1979 (NSW)</i> <i>Rural Fires Act 1997 (NSW)</i> <i>Security Industry Act 1997 (NSW)</i>

## APPENDIX 4: MAPS

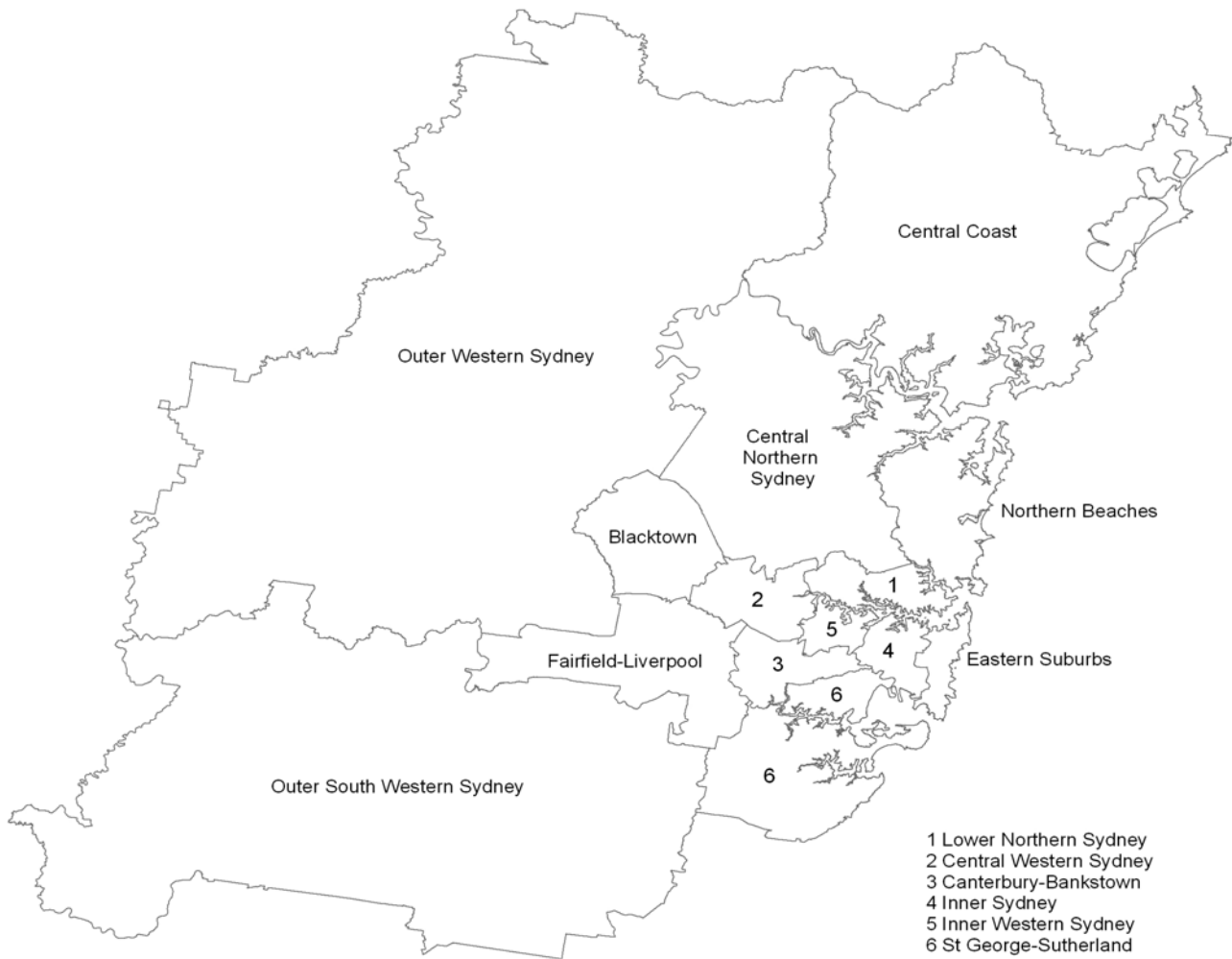
Map 1: New South Wales Statistical Division boundaries





**APPENDIX 4: MAPS** *continued*

Map 2: Sydney Statistical Subdivision boundaries



**APPENDIX 5: LGAS IN SYDNEY STATISTICAL SUBDIVISIONS*****Sydney Statistical Subdivisions***


---

<b><i>Inner Sydney</i></b>	<b><i>Outer South Western Sydney</i></b>	<b><i>Lower Northern Sydney</i></b>
Botany Bay	Camden	Hunters Hill
Leichhardt	Campbelltown	Lane Cove
Marrickville	Wollondilly	Mosman
Sydney		North Sydney
		Ryde
		Willoughby
<b><i>Eastern Suburbs</i></b>	<b><i>Inner Western Sydney</i></b>	<b><i>Central Northern Sydney</i></b>
Randwick	Ashfield	Baulkham Hills
Waverley	Burwood	Hornsby
Woollahra	Canada Bay	Ku-ring-gai
	Strathfield	
<b><i>St George – Sutherland</i></b>	<b><i>Central Western Sydney</i></b>	<b><i>Northern Beaches</i></b>
Hurstville	Auburn	Manly
Kogarah	Holroyd	Pittwater
Rockdale	Parramatta	Warringah
Sutherland Shire		
<b><i>Canterbury – Bankstown</i></b>	<b><i>Outer Western Sydney</i></b>	<b><i>Central Coast</i></b>
Bankstown	Blue Mountains	Gosford
Canterbury	Hawkesbury	Wyong
	Penrith	
<b><i>Fairfield – Liverpool</i></b>	<b><i>Blacktown</i></b>	
Fairfield	Blacktown	
Liverpool		

## APPENDIX 5: LGAS IN NSW REGIONAL STATISTICAL DIVISIONS

### ***NSW regional Statistical Divisions***

<b><i>Hunter</i></b>	<b><i>Illawarra</i></b>	<b><i>Richmond – Tweed</i></b>	<b><i>Mid-North Coast</i></b>
Cessnock	Kiama	Ballina	Bellingen
Dungog	Shellharbour	Byron	Clarence Valley
Gloucester	Shoalhaven	Kyogle	Coffs Harbour
Great Lakes	Wingecarribee	Lismore	Greater Taree
Lake Macquarie	Wollongong	Richmond Valley	Port Macquarie–Hastings
Maitland		Tweed	Kempsey
Muswellbrook			Lord Howe Island
Newcastle			Nambucca
Port Stephens			
Singleton			
Upper Hunter Shire			
<b><i>Northern</i></b>	<b><i>North Western</i></b>	<b><i>Central West</i></b>	<b><i>South Eastern</i></b>
Armidale Dumaresq	Bogan	Bathurst Regional	Bega Valley
Glen Innes Severn	Bourke	Bland	Bombala
Gunnedah	Brewarrina	Blayney	Boorowa
Guyra	Cobar	Cabonne	Cooma–Monaro
Gwydir	Coonamble	Cowra	Eurobodalla
Inverell	Dubbo	Forbes	Goulburn Mulwaree
Liverpool Plains	Gilgandra	Lachlan	Harden
Moree Plains	Mid-Western Regional	Lithgow	Palerang
Narrabri	Narromine	Oberon	Queanbeyan
Tamworth Regional	Walgett	Orange	Snowy River
Tenterfield	Warren	Parkes	Upper Lachlan Shire
Uralla	Warrumbungle Shire	Weddin	Yass Valley
Walcha	Wellington		Young
<b><i>Murrumbidgee</i></b>	<b><i>Murray</i></b>	<b><i>Far West</i></b>	
Carrathool	Albury	Broken Hill	
Coolamon	Balranald	Central Darling	
Cootamundra	Berrigan	Unincorporated Far West	
Griffith	Conargo		
Gundagai	Corowa Shire		
Hay	Deniliquin		
Junee	Greater Hume Shire		
Leeton	Jerilderie		
Lockhart	Murray		
Murrumbidgee	Tumbarumba		
Narrandera	Urana		
Temora	Wakool		
Tumut	Wentworth		
Wagga Wagga			

