

NSW CUSTODY STATISTICS

December 2019



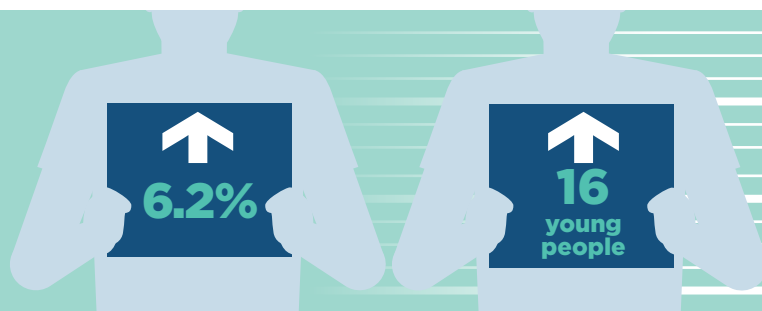
YOUTH DETENTION POPULATION

259

in December 2018

275

in December 2019



CUSTODY STATUS

Between December 2018 and December 2019



8.2%

Remand up 8.2% or 12 young people to 158



3.5%

Sentenced up 3.5% or 4 young people to 117

GENDER

Between December 2018 and December 2019



9.1%

Girls increased by 9.1% or 2 young people to 24



5.9%

Boys increased by 5.9% or 14 young people to 251

ABORIGINAL OVER-REPRESENTATION

In Dec 2018
53.7%
of young people in custody were Aboriginal

In Dec 2019
44.0%
of young people in custody were Aboriginal

Between December 2018 and December 2019



8.3%

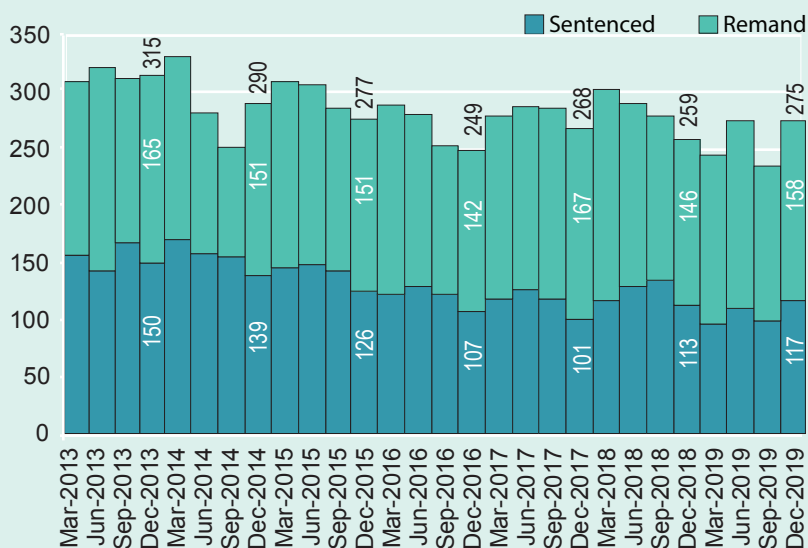
Young Aboriginal female prisoners fell by 8.3% or 1 young person to 11



13.4%

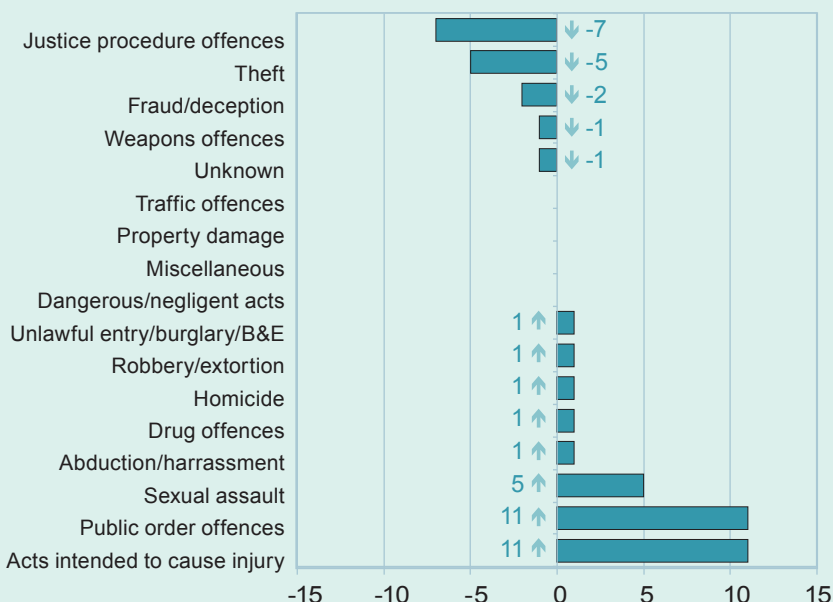
Young Aboriginal male prisoners fell by 13.4% or 17 young people to 110

MONTHLY TRENDS



CHANGE IN YOUTH CUSTODY BY OFFENCE

December 18 to December 19



NSW CUSTODY STATISTICS

December 2019

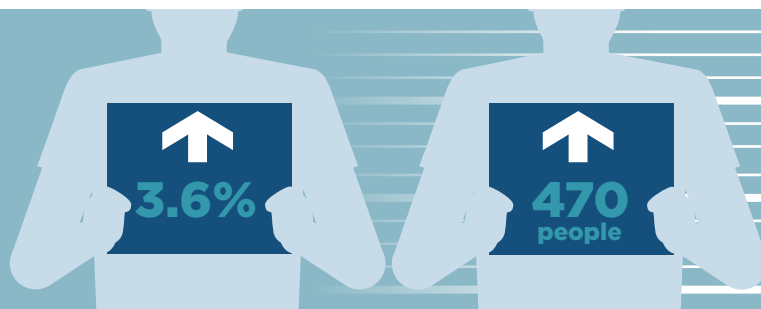


PRISON POPULATION

13,165 **13,635**

in December 2018

in December 2019



PRISONER TYPE

Between December 2018 and December 2019



↑ 1.2%

Remand up 1.2% or 53 people to 4,639



↑ 4.9%

Sentenced up 4.9% or 417 people to 8,996

PRISONER GENDER

Between December 2018 and December 2019



↑ 2.7%

Female prisoners increased 2.7% or 26 people to 981



↑ 3.6%

Male prisoners increased 3.6% or 444 people to 12,654

ABORIGINAL OVER-REPRESENTATION

In Dec 2018

24.9%

of prisoners were Aboriginal

In Dec 2019

25.0%

of prisoners were Aboriginal

Between December 2018 and December 2019



↓ 3.2%

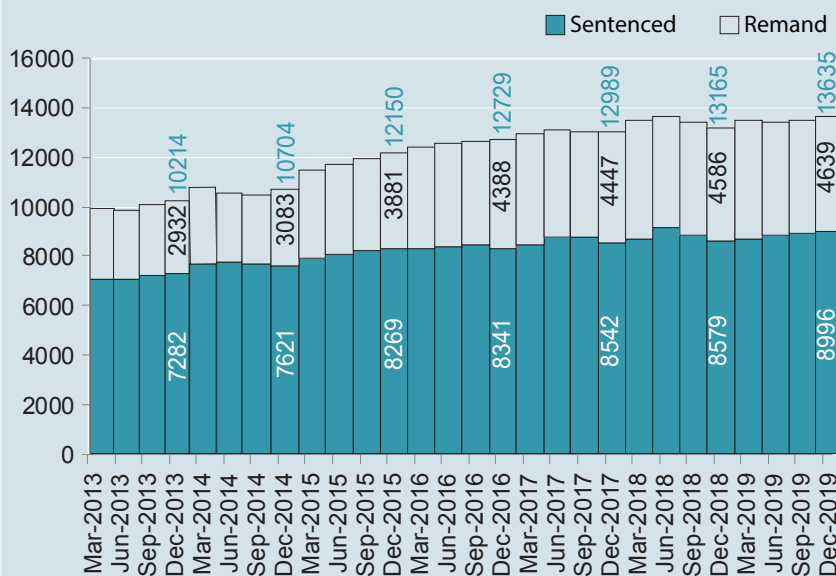
Aboriginal female prisoners fell 3.2% or 10 people to 306



↑ 5.1%

Aboriginal male prisoners increased 5.1% or 150 people to 3,109

MONTHLY TRENDS



CHANGE IN PRISON NUMBERS BY OFFENCE

December 18 to December 19

