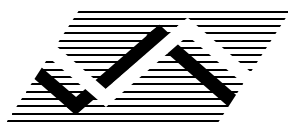

NEW SOUTH WALES RECORDED CRIME STATISTICS 2011

Derek Goh and Steve Moffatt

Revised Edition September 2018

REVISED EDITION

This is a revised edition of the original report. The revision was created in September 2018 to incorporate updates to the historic counts of murder and drug possession offences. The murder revisions have increased the number of murder victims by 4% between 2011 and 2017. The drug possession revisions have resulted in a 25% reduction in the volume of these offences from 2010 due to some incidents previously being double counted.



NSW Bureau of Crime Statistics and Research

ACKNOWLEDGEMENTS

The production of this report was greatly assisted by officers within the NSW Police Force. Special thanks are due to officers in Business and Technology Services and in Corporate Information, Executive Support Group.

REVISED EDITION

This is a revised edition of the original report. The revision was created in September 2018 to incorporate updates to the historic counts of murder and drug possession offences. The murder revisions have increased the number of murder victims by 4% between 2011 and 2017. The drug possession revisions have resulted in a 25% reduction in the volume of these offences from 2010 due to some incidents previously being double counted.

2018

Published by the NSW Bureau of Crime Statistics and Research
Department of Justice
Level 1
Henry Deane Building
20 Lee St
Sydney NSW 2000
Australia

Phone: + 61 (2) 8346 1100
Fax: + 61 (2) 8364 1298
Email: bcsr@justice.nsw.gov.au
Website: www.bocsar.nsw.gov.au
ISSN: 1035-9044

This report is available in pdf format on our website and may be provided in alternative formats. Please contact the Bureau on 8346 1100 or email us at bcsr@justice.nsw.gov.au.

Front Cover

Rates of *steal from motor vehicle* offences by Local Government Area (LGA)

INTRODUCTION

This report presents data on crime reported to, or detected by, the NSW Police Force from January 1995 to December 2011, with a focus on the statistical trends for the 24 months ending December 2011. The data were extracted from the Computerised Operational Policing System (COPS) of the NSW Police Force in February 2012.

During November and for part of December 2011 NSW Police Force industrial action meant that fewer incidents than expected were recorded for some offences. We estimate that due to this industrial action overall recorded assault counts could be up to 1.5 percent below expected levels for 2011. This effect can clearly be seen for the last two months in Figure 1.1 on page 7 which is strongly influenced by aggregate assault levels. We estimate that the effect of this industrial action on other major offences is well below one percent for 2011. However, offences such as offensive conduct, offensive language, drug offences and others involving police enforcement and issuing of infringements have counts below expected levels for November and December 2011.

The report includes an overview of trends in the most recent two-year period for major offence categories, firstly for NSW and then across NSW regions broken down to the Local Government Area (LGA) level. At the State level, for the 24-month period to the end of December 2011 one major offence category has been trending upwards: *steal from motor vehicle* (up 7.5%). Three of the 17 major offence categories were trending downwards: *assault - non domestic violence related*, *robbery without a weapon* and *break and enter dwelling*. As we have concerns that the industrial action in late 2011 may have lowered the counts for *assault - non domestic violence related*, an offence which peaks in the warmer months, we conducted additional analyses, controlling for trends and seasonality. These analyses indicated that the reported 7.0 percent significant downtrend reduced to 5.4 percent when predicted counts were used for the last two months of the test period.

The front cover is a Local Government Area (LGA) map showing variation across NSW in the rates of *steal from motor vehicle* offences. The most commonly stolen items from motor vehicles are number plates and this offence rose 35 percent from 2010 to 2011.

Dr Don Weatherburn
Director

April 2012

CONTENTS

SECTION 1: OVERVIEW OF TRENDS IN VIOLENT AND PROPERTY CRIME	. . .	5
Figure 1.1 NSW long-term trend in violent crime	. . .	7
Figure 1.2 NSW long-term trend in property crime	. . .	7
Table 1.1 Trends in violent and property offences, NSW Statistical Divisions (SDs) and NSW	. . .	8
Table 1.2 Trends in violent and property offences, NSW Metropolitan Statistical Subdivisions (SSDs)	. . .	9
Table 1.3 Trends in violent and property offences, NSW Local Government Areas (LGAs)	. . .	10
SECTION 2: OVERVIEW OF TRENDS IN RECORDED CRIME, BY OFFENCE TYPE	. . .	13
Table 2.1 Trends in recorded criminal incidents for major offences, NSW, January 2007 to December 2011	. . .	14
Table 2.2 Periodic trends in recorded criminal incidents for major offences, NSW, January 2006 to December 2011	. . .	15
Table 2.3 Number and trends in recorded criminal incidents for all offences, NSW, January 2010 to December 2011	. . .	16
Table 2.4 Number and outcome of 24-month trend tests for major offences, NSW LGAs, all reports 2004 to 2011	. . .	17
Figure 2.1A Number of NSW LGAs with significant upward trends for major offences, January 2009 to December 2010 and January 2010 to December 2011	. . .	18
Figure 2.1B Number of NSW LGAs with significant downward trends for major offences, January 2009 to December 2010 and January 2010 to December 2011	. . .	18
SECTION 3: TRENDS, RATE COMPARISONS AND RECORDED CRIMINAL INCIDENTS FOR MAJOR OFFENCES, NSW REGIONS AND LOCAL GOVERNMENT AREAS (LGAS)	. . .	19
Table 3.1A Trends in recorded criminal incidents for major offences, NSW SDs, January 2010 to December 2011	. . .	20
Table 3.1B Ratio to NSW rate of recorded criminal incidents per 100,000 population, major offences, NSW SDs, 2011	. . .	20
Table 3.1C Number of recorded criminal incidents for major offences, NSW SDs, 2011	. . .	21
Table 3.1D Number of recorded criminal incidents for major offences, NSW SDs, 2010	. . .	21
Table 3.2A Trends in recorded criminal incidents for major offences, NSW Metropolitan SSDs, January 2010 to December 2011	. . .	22
Table 3.2B Ratio to NSW rate of recorded criminal incidents per 100,000 population, major offences, NSW Metropolitan SSDs, 2011	. . .	22
Table 3.2C Number of recorded criminal incidents for major offences, NSW Metropolitan SSDs, 2011	. . .	23
Table 3.2D Number of recorded criminal incidents for major offences, NSW Metropolitan SSDs, 2010	. . .	23

Table 3.3A	Trends in recorded criminal incidents for major offences, NSW LGAs, January 2010 to December 2011	. . . 24
Table 3.3B	Ratio to NSW rate of recorded criminal incidents per 100,000 population, major offences, NSW LGAs, 2011	. . . 26
Table 3.3C	Number of recorded criminal incidents for major offences, NSW LGAs, 2011	. . . 28
Table 3.3D	Number of recorded criminal incidents for major offences, NSW LGAs, 2010	. . . 30
SECTION 4: METHODS OF PROCEEDINGS AGAINST ALLEGED OFFENDERS, 2009, 2010 AND 2011		. . . 33
Figure 4.1	Trends in referral methods for alleged offenders proceeded against to court, NSW, January 2010 to December 2011	. . . 34
Table 4.1	Number of alleged offenders recorded by NSW Police by method of legal proceedings, NSW, January 2009 - December 2011	. . . 35
SECTION 5: CLEARED CRIMINAL INCIDENTS AND WHETHER LEGAL PROCEEDINGS COMMENCED FOR SELECTED OFFENCES, JANUARY 2009 TO SEPTEMBER 2011		. . . 37
Table 5.1	Number of recorded criminal incidents for selected offences by clear up status and whether legal proceedings commenced, NSW, January 2009 to December 2009	. . . 38
Table 5.2	Number of recorded criminal incidents for selected offences by clear up status and whether legal proceedings commenced, NSW, January 2010 to December 2010	. . . 39
Table 5.3	Number of recorded criminal incidents for selected offences by clear up status and whether legal proceedings commenced, NSW, January 2011 to September 2011	. . . 40
Figure 5.1	Percentage of recorded criminal incidents for selected offences where legal proceedings commenced within 30 and 90 days, NSW, January 2011 to September 2011	. . . 41
APPENDICES		. . . 43
Appendix 1	Trends in recorded criminal incidents for NSW	. . . 44
Appendix 2	Definitions and Explanatory Notes	. . . 45
Appendix 3	BOCSAR offences mapped to Police incident categories	. . . 48
Appendix 4	Maps	. . . 54
Appendix 5	Local Government Areas in Metropolitan Statistical Subdivisions and NSW regional Statistical Divisions	. . . 56

SECTION 1:

**OVERVIEW OF TRENDS
IN VIOLENT AND PROPERTY CRIME**

FIGURE 1.1: NSW LONG-TERM TREND IN VIOLENT CRIME*

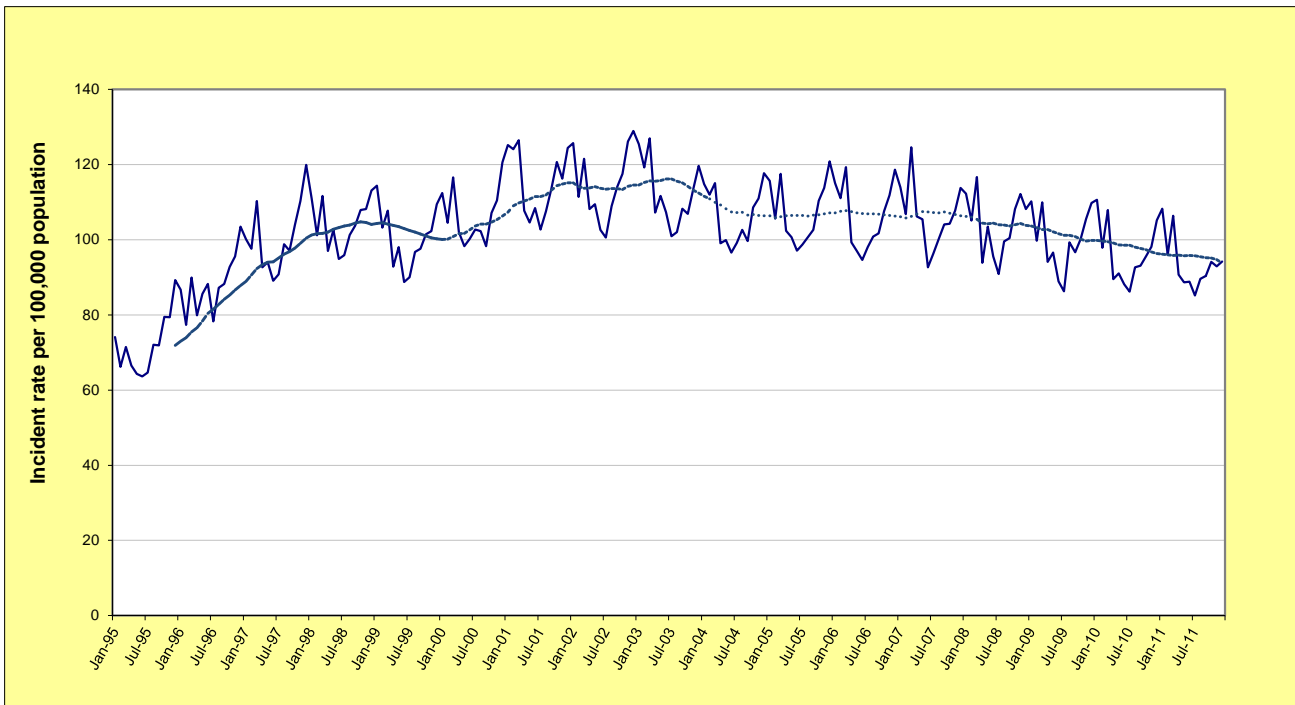
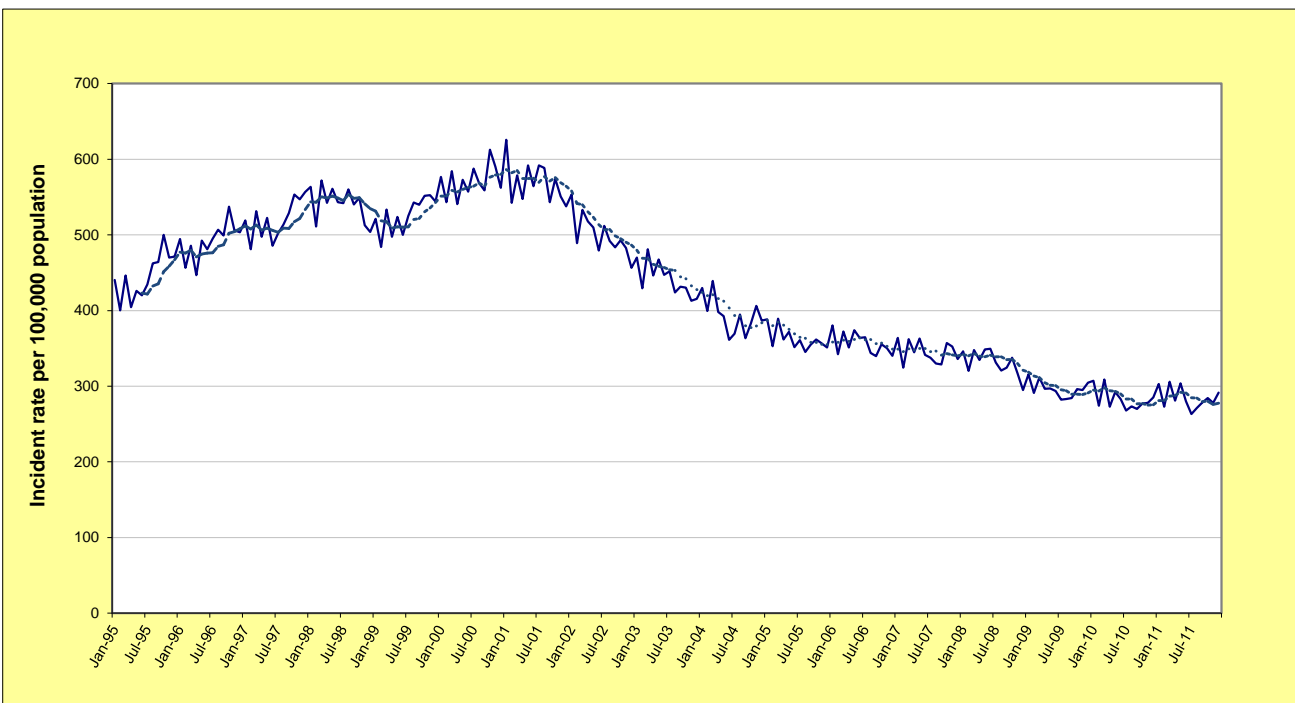


FIGURE 1.2: NSW LONG-TERM TREND IN PROPERTY CRIME**



* **Violent offences** include: murder, assault - domestic violence related, assault - non-domestic violence related, assault police, robbery without a weapon, robbery with a firearm, robbery with a weapon not a firearm, sexual assault and indecent assault / act of indecency / other sexual offences.

** **Property offences** include: break and enter dwelling, break and enter non-dwelling, motor vehicle theft, steal from motor vehicle, steal from retail store, steal from dwelling, steal from person, stock theft, other theft and fraud.

For further explanation of **violent offences** and **property offences**, see page 44, paragraph 7.

**TABLE 1.1: TRENDS[^] IN RECORDED CRIMINAL INCIDENTS, VIOLENT AND PROPERTY OFFENCES,
NSW STATISTICAL DIVISIONS (SDs) AND NSW, JANUARY 2007 TO DECEMBER 2011**

Statistical Division	Violent Offences*			Property Offences**		
	Annual percentage change over Jan 2010 - Dec 2011	Average annual percentage change over Jan 2007 - Dec 2011	Ratio [#] to NSW rate	Annual percentage change over Jan 2010 - Dec 2011	Average annual percentage change over Jan 2007 - Dec 2011	Ratio [#] to NSW rate
Sydney	Stable	-2.2%	0.9	Stable	-5.1%	1.0
Hunter	Stable	-2.1%	1.0	Stable	-0.7%	1.2
Illawarra	Stable	-2.4%	0.9	Stable	-0.9%	0.9
Richmond-Tweed	Stable	-4.2%	1.1	Stable	-2.1%	1.0
Mid-North Coast	Stable	Stable	1.1	Stable	Stable	1.0
Northern	Stable	Stable	1.5	Stable	Stable	1.1
North Western	Stable	Stable	2.2	Stable	Stable	1.4
Central West	Stable	Stable	1.4	Stable	Stable	1.1
South Eastern	Stable	-2.2%	0.9	Stable	-5.4%	0.7
Murrumbidgee	Stable	Stable	1.2	Stable	Stable	1.1
Murray	Stable	-5.1%	1.0	Stable	-2.5%	1.1
Far West	16.0%	4.7%	2.6	Stable	-4.7%	1.2
NSW	Stable	-2.0%	1.0	Stable	-3.6%	1.0

[^] For further explanation of **trend results**, see page 44, paragraphs 5 and 6.

* **Violent offences** include: murder, assault - domestic violence related, assault - non-domestic violence related, assault police, robbery without a weapon, robbery with a firearm, robbery with a weapon not a firearm, sexual assault and indecent assault / act of indecency / other sexual offences.

** **Property offences** include: break and enter dwelling, break and enter non-dwelling, motor vehicle theft, steal from motor vehicle, steal from retail store, steal from dwelling, steal from person, stock theft, other theft and fraud.

For further explanation of **violent offences** and **property offences**, see page 44, paragraph 7.

[#] For further explanation of **rate calculation populations** and the **ratio to NSW rate**, see page 44, Note 3 and paragraph 8.

**TABLE 1.2: TRENDS[^] IN RECORDED CRIMINAL INCIDENTS, VIOLENT AND PROPERTY OFFENCES,
NSW METROPOLITAN STATISTICAL SUBDIVISIONS (SSDs), JANUARY 2007 TO DECEMBER 2011**

Metropolitan Statistical Subdivision	Violent Offences*			Property Offences**		
	Annual percentage change over	Average annual percentage change over	Ratio [#] to NSW rate	Annual percentage change over	Average annual percentage change over	Ratio [#] to NSW rate
	Jan 2010 - Dec 2011	Jan 2007 - Dec 2011		Jan 2010 - Dec 2011	Jan 2007 - Dec 2011	
Inner Sydney	Stable	-4.7%	2.0	-5.3%	-9.1%	2.3
Eastern Suburbs	Stable	-6.1%	0.7	Stable	-7.2%	1.0
St George-Sutherland	-7.3%	-2.7%	0.6	-3.5%	-4.7%	0.6
Canterbury-Bankstown	Stable	Stable	0.8	Stable	-2.0%	0.9
Fairfield-Liverpool	Stable	1.6%	1.0	Stable	-2.5%	1.0
Outer South Western Sydney	Stable	-3.2%	1.2	Stable	-1.5%	0.9
Inner Western Sydney	-9.9%	Stable	0.6	Stable	-7.6%	1.0
Central Western Sydney	Stable	-2.0%	1.0	-2.0%	-5.7%	1.1
Outer Western Sydney	Stable	Stable	1.1	Stable	-2.9%	0.9
Blacktown	Stable	Stable	1.4	Stable	-2.6%	1.1
Lower Northern Sydney	Stable	-3.3%	0.4	Stable	-8.4%	0.7
Central Northern Sydney	Stable	-2.5%	0.3	Stable	-6.4%	0.5
Northern Beaches	Stable	Stable	0.5	Stable	-4.2%	0.7
Central Coast	-7.8%	-3.5%	1.0	Stable	Stable	1.0
Newcastle	Stable	-2.5%	1.1	Stable	-1.0%	1.3
Wollongong	Stable	-3.5%	0.9	9.3%	-2.2%	0.9

[^] For further explanation of **trend results**, see page 44, paragraphs 5 and 6.

* **Violent offences** include: murder, assault - domestic violence related, assault - non-domestic violence related, assault police, robbery without a weapon, robbery with a firearm, robbery with a weapon not a firearm, sexual assault and indecent assault / act of indecency / other sexual offences.

** **Property offences** include: break and enter dwelling, break and enter non-dwelling, motor vehicle theft, steal from motor vehicle, steal from retail store, steal from dwelling, steal from person, stock theft, other theft and fraud.

For further explanation of **violent offences** and **property offences**, see page 44, paragraph 7.

[#] For further explanation of **rate calculation populations** and the **ratio to NSW rate**, see page 44, Note 3 and paragraph 8.

**TABLE 1.3: TRENDS^A IN RECORDED CRIMINAL INCIDENTS, VIOLENT AND PROPERTY OFFENCES,
NSW LOCAL GOVERNMENT AREAS (LGAs), JANUARY 2007 TO DECEMBER 2011**

NSW LGAs	Violent Offences*			Property Offences*		
	Annual percentage change over Jan 2010 - Dec 2011	Average annual percentage change Jan 2007 - Dec 2011	Ratio [#] to NSW rate	Annual percentage change over Jan 2010 - Dec 2011	Average annual percentage change Jan 2007 - Dec 2011	Ratio [#] to NSW rate
Albury	ns	-5.4	1.2	-14.4	-4.9	1.4
Armidale Dumaresq	ns	ns	1.4	-27.2	-8.5	0.8
Ashfield	ns	ns	0.7	ns	-6.6	0.8
Auburn	-15.1	ns	1.0	-7.5	-6.7	1.0
Ballina	ns	-8.1	0.9	33.0	-3.2	1.0
Bairanald	ns	ns	.	ns	ns	.
Bankstown	ns	ns	0.9	14.7	-1.6	1.1
Bathurst Regional	ns	ns	1.4	ns	ns	1.1
Bega Valley	ns	ns	0.9	ns	-8.6	0.6
Bellingen	ns	ns	0.6	ns	ns	0.7
Berrigan	ns	ns	0.4	ns	-12.2	0.5
Blacktown	ns	ns	1.4	ns	-2.6	1.1
Bland	ns	-6.2	0.9	ns	-10.4	0.6
Blayney	ns	ns	0.8	ns	ns	0.6
Blue Mountains	ns	ns	0.9	ns	ns	0.7
Bogan	ns	ns	1.6	ns	ns	0.9
Bombala	ns	ns	.	ns	ns	.
Boorowa	.	.	.	ns	ns	.
Botany Bay	ns	-5.3	1.0	-9.9	-5.2	1.5
Bourke	2.0	ns	7.2	29.8	ns	3.5
Brewarrina	ns	-8.5	.	20.2	11.4	.
Broken Hill	21.0	ns	2.1	ns	-6.1	1.2
Burwood	ns	ns	0.8	ns	-7.1	1.4
Byron	ns	ns	1.5	ns	ns	1.4
Cabonne	ns	ns	0.6	ns	ns	0.4
Camden	ns	ns	0.7	-11.0	ns	0.7
Campbelltown	-6.9	-4.5	1.5	ns	-2.5	1.2
Canada Bay	ns	ns	0.3	ns	-8.6	0.7
Canterbury	ns	ns	0.7	ns	-2.9	0.7
Carrathool	-50.0	ns	.	ns	ns	.
Central Darling	ns	ns	.	ns	8.7	.
Cessnock	ns	ns	1.2	26.3	ns	1.3
Clarence Valley	ns	ns	0.9	ns	-4.4	1.0
Cobar	ns	ns	1.8	ns	ns	1.1
Coffs Harbour	ns	ns	1.2	ns	-5.1	1.0
Conargo
Coolamon	ns	ns	0.6	ns	22.3	0.7
Cooma-Monaro	53.6	ns	1.3	ns	-4.1	0.7
Coonamble	ns	ns	2.8	ns	14.3	3.2
Cootamundra	ns	ns	1.5	ns	ns	0.7
Corowa Shire	ns	-9.4	0.6	ns	ns	0.8
Cowra	ns	8.8	1.7	-26.6	-5.2	0.9
Deniliquin	ns	ns	1.4	ns	ns	1.1
Dubbo	ns	ns	1.8	ns	-2.7	1.3
Dungog	ns	-13.5	0.4	ns	ns	0.6
Eurobodalla	ns	-5.3	1.0	ns	ns	1.1
Fairfield	ns	ns	0.9	ns	-3.1	0.8
Forbes	ns	ns	1.7	ns	ns	1.0
Gilgandra	ns	ns	1.4	28.2	8.4	1.4
Glen Innes Severn	ns	ns	1.1	ns	ns	1.0
Gloucester	ns	ns	0.4	ns	ns	0.6
Gosford	-10.5	-5.6	0.8	ns	ns	0.9
Goulburn Mulwaree	-13.5	ns	1.1	-12.8	ns	0.8
Great Lakes	ns	ns	1.2	ns	-3.6	1.0
Greater Hume Shire	ns	ns	0.5	ns	ns	0.7
Greater Taree	ns	-4.4	1.2	-15.5	ns	1.1
Griffith	ns	ns	1.6	ns	ns	1.1
Gundagai	ns	ns	0.8	ns	ns	0.6
Gunnedah	ns	ns	1.6	20.1	8.5	1.5
Guyra	ns	ns	1.3	ns	ns	0.6
Gwydir	ns	ns	0.7	ns	ns	0.4
Harden	ns	ns	0.6	ns	-7.8	0.5
Hawkesbury	ns	ns	1.0	ns	ns	0.9
Hay	63.3	ns	1.3	ns	ns	0.9
Holroyd	ns	ns	0.9	ns	-6.5	0.9
Hornsby	ns	ns	0.4	ns	-7.5	0.4
Hunters Hill	ns	ns	0.3	ns	-9.0	0.5
Hurstville	ns	ns	0.7	ns	ns	0.9
Inverell	ns	ns	1.6	ns	ns	0.9
Jerilderie	.	.	.	ns	ns	.
Junee	ns	ns	0.8	ns	ns	0.7
Kempsey	ns	-3.3	1.5	ns	4.3	1.6
Kiama	ns	ns	0.5	ns	ns	0.6
Kogarah	ns	ns	0.5	ns	-5.9	0.5
Ku-ring-gai	ns	ns	0.2	ns	-4.7	0.4
Kyogle	-30.5	-10.9	1.0	ns	8.6	1.0
Lachlan	ns	ns	1.8	ns	ns	1.4
Lake Macquarie	ns	ns	0.8	15.6	ns	1.0
Lane Cove	29.6	ns	0.3	ns	-13.9	0.5
Leeton	ns	ns	1.7	ns	ns	1.1

TABLE 1.3: TRENDS[^] IN RECORDED CRIMINAL INCIDENTS, VIOLENT AND PROPERTY OFFENCES, NSW LOCAL GOVERNMENT AREAS (LGAs), JANUARY 2007 TO DECEMBER 2011

NSW LGAs	Violent Offences*			Property Offences*		
	Annual percentage change over Jan 2010 - Dec 2011	Average annual percentage change Jan 2007 - Dec 2011	Ratio [#] to NSW rate	Annual percentage change over Jan 2010 - Dec 2011	Average annual percentage change Jan 2007 - Dec 2011	Ratio [#] to NSW rate
Leichhardt	ns	-2.5	0.8	ns	-10.5	0.9
Lismore	ns	-6.4	1.3	11.1	-4.5	1.1
Lithgow	ns	-5.3	1.2	ns	ns	1.0
Liverpool	ns	3.3	1.1	ns	-2.1	1.1
Liverpool Plains	ns	ns	1.1	ns	11.7	0.7
Lockhart	.	.	0.5	ns	ns	0.5
Lord Howe Island
Maitland	ns	ns	1.1	ns	ns	1.2
Manly	ns	ns	0.9	ns	-5.3	1.0
Marrickville	ns	-5.5	1.0	-14.6	-11.7	1.0
Mid-Western Regional	ns	ns	1.3	ns	ns	0.9
Moree Plains	ns	-6.8	2.8	ns	ns	2.5
Mosman	ns	ns	0.3	ns	-8.6	0.6
Murray	ns	ns	0.4	ns	ns	0.8
Murrumbidgee	ns	ns	.	ns	-10.3	.
Muswellbrook	-21.4	ns	1.0	ns	ns	1.3
Nambucca	-36.4	-7.9	1.0	ns	-6.0	1.0
Narrabri	ns	-12.2	1.1	ns	ns	1.1
Narrandera	ns	ns	1.4	-12.1	ns	1.0
Narromine	ns	ns	1.8	ns	10.4	1.6
Newcastle	ns	-4.6	1.3	ns	-2.7	1.6
North Sydney	ns	ns	0.6	ns	-12.1	0.8
Oberon	ns	ns	0.8	ns	ns	0.6
Orange	ns	7.5	1.8	ns	9.5	1.8
Palerang	ns	ns	0.5	ns	-7.7	0.3
Parkes	ns	ns	1.7	ns	-8.7	1.0
Parramatta	ns	-1.6	1.1	ns	-4.9	1.2
Penrith	ns	ns	1.3	-6.5	-3.9	1.0
Pittwater	ns	7.6	0.5	ns	-3.1	0.6
Port Macquarie-Hastings	ns	5.2	1.1	ns	2.3	0.9
Port Stephens	ns	-4.4	0.9	-5.0	-7.4	1.0
Queanbeyan	ns	ns	0.9	-21.7	-10.1	0.7
Randwick	ns	-5.0	0.8	ns	-4.0	1.0
Richmond Valley	ns	-8.5	1.5	ns	ns	1.3
Rockdale	-12.5	ns	0.6	ns	-4.5	0.7
Ryde	ns	-8.8	0.4	ns	-4.6	0.7
Shellharbour	ns	-3.7	0.8	ns	ns	0.9
Shoalhaven	ns	ns	1.3	ns	3.2	1.1
Singleton	ns	ns	0.8	ns	7.2	1.0
Snowy River	ns	ns	0.7	ns	ns	0.8
Strathfield	ns	ns	1.0	ns	-7.5	1.3
Sutherland Shire	ns	-2.6	0.6	-9.9	-6.6	0.5
Sydney	ns	-4.7	3.0	ns	-9.0	3.4
Tamworth Regional	ns	7.1	1.7	ns	ns	1.2
Temora	ns	ns	1.0	ns	ns	0.6
Tenterfield	ns	ns	1.1	ns	-14.4	0.8
The Hills Shire	ns	-2.5	0.4	ns	-6.5	0.5
Tumbarumba	ns	ns	0.7	-32.3	ns	0.5
Tumut Shire	ns	ns	1.1	ns	ns	0.7
Tweed	ns	ns	0.8	-12.4	ns	0.8
Unincorporated Far West
Upper Hunter Shire	ns	ns	0.7	ns	6.2	0.7
Upper Lachlan Shire	ns	ns	0.5	ns	ns	0.5
Uralla	ns	ns	0.8	ns	ns	0.5
Urana	.	.	.	ns	ns	.
Wagga Wagga	ns	ns	1.2	ns	ns	1.4
Wakool	ns	.	0.6	ns	ns	0.5
Walcha	.	.	0.4	ns	ns	0.5
Walgett	ns	ns	4.3	ns	-8.8	1.6
Warren	ns	20.6	.	ns	ns	.
Warringah	ns	ns	0.5	ns	-4.1	0.6
Warrumbungle Shire	ns	ns	1.3	ns	ns	0.8
Waverley	ns	-8.0	0.8	-11.4	-8.8	1.2
Weddin	ns	ns	0.6	ns	ns	0.4
Wellington	ns	8.6	2.2	ns	9.5	1.5
Wentworth	ns	ns	1.6	ns	7.3	1.8
Willoughby	ns	ns	0.4	ns	-7.4	0.9
Wingecarribee	ns	-4.8	0.6	ns	-2.0	0.6
Wollondilly	ns	ns	0.6	ns	ns	0.5
Wollongong	ns	-3.4	0.9	10.8	-2.7	1.0
Woolahra	ns	-6.3	0.5	ns	-11.6	0.8
Wyong	ns	ns	1.2	7.4	ns	1.1
Yass Valley	ns	ns	0.5	-12.8	-6.7	0.4
Young	ns	ns	1.4	ns	ns	0.8
NSW	ns	-2.0	1.0	ns	-3.6	1.0

[^] For further explanation of **trend results**, see page 44, paragraphs 5 and 6.

* For further explanation of **violent offences** and **property offences**, see page 44, paragraph 7.

For further explanation of **rate calculation populations** and the **ratio to NSW rate**, see page 44, Note 3 and paragraph 8.

Sydney LGA can be considered a special case since the population used to calculate the rate is much lower than the population using the area for work and entertainment. This will be reflected in higher incident rates.

SECTION 2:

**OVERVIEW OF TRENDS
IN RECORDED CRIME
BY OFFENCE TYPE**

**TABLE 2.1: TRENDS[^] IN RECORDED CRIMINAL INCIDENTS FOR MAJOR OFFENCES,
NSW, JANUARY 2007 TO DECEMBER 2011**

<i>Offence category</i>	<i>Trend result and annual percentage change over Jan 2010 - Dec 2011</i>	<i>Trend result and average annual percentage change over Jan 2007 - Dec 2011</i>
Murder*	Stable	Stable
Assault - domestic violence related	Stable	Stable
Assault - non-domestic violence related	Down by 7.0%	Down by 3.1%
Sexual assault	Stable	Stable
Indecent assault, act of indecency and other sexual offences	Stable	Stable
Robbery without a weapon	Down by 14.8%	Down by 10.4%
Robbery with a firearm	Stable	Down by 9.5%
Robbery with a weapon not a firearm	Stable	Down by 9.9%
Break and enter dwelling	Down by 4.5%	Down by 4.1%
Break and enter non-dwelling	Stable	Down by 8.6%
Motor vehicle theft	Stable	Down by 7.4%
Steal from motor vehicle	Up by 7.5%	Down by 6.2%
Steal from retail store	Stable	Up by 3.0%
Steal from dwelling	Stable	Stable
Steal from person	Stable	Down by 7.6%
Fraud	Stable	Stable
Malicious damage to property	Stable	Down by 5.1%

[^] For further explanation of **trend results**, see page 44, paragraphs 5 and 6.

* For murder, the trend test is applied to the monthly number of recorded victims rather than criminal incidents.

TABLE 2.2: PERIODIC TRENDS[^] IN RECORDED CRIMINAL INCIDENTS FOR MAJOR OFFENCES, NSW, JANUARY 2006 TO DECEMBER 2011

<i>Offence category</i>	<i>Trend result and annual percentage change</i>				
	<i>Jan 2006 - Dec 2007</i>	<i>Jan 2007 - Dec 2008</i>	<i>Jan 2008 - Dec 2009</i>	<i>Jan 2009 - Dec 2010</i>	<i>Jan 2010 - Dec 2011</i>
Murder*	Stable	Stable	Stable	Stable	Stable
Assault - domestic violence related	Stable	Stable	Stable	Stable	Stable
Assault - non-domestic violence related	Stable	Stable	Stable	Stable	-7.0%
Sexual assault	6.7%	Stable	Stable	Stable	Stable
Indecent assault, act of indecency and other sexual offences	Stable	Stable	Stable	Stable	Stable
Robbery without a weapon	Stable	Stable	-15.2%	-6.7%	-14.8%
Robbery with a firearm	Stable	-29.9%	Stable	Stable	Stable
Robbery with a weapon not a firearm	Stable	-17.8%	-10.4%	-11.0%	Stable
Break and enter dwelling	Stable	-5.0%	-6.1%	Stable	-4.5%
Break and enter non-dwelling	-10.0%	-5.8%	-16.3%	-11.2%	Stable
Motor vehicle theft	-5.5%	-8.2%	-8.7%	-9.2%	Stable
Steal from motor vehicle	6.7%	-6.9%	-18.7%	-4.8%	7.5%
Steal from retail store	Stable	8.6%	Stable	Stable	Stable
Steal from dwelling	Stable	Stable	Stable	Stable	Stable
Steal from person	Stable	-11.3%	-4.6%	-11.3%	Stable
Fraud	Stable	17.7%	-9.6%	Stable	Stable
Malicious damage to property	Stable	2.1%	Stable	-9.9%	Stable

[^] For further explanation of **trend results**, see page 44, paragraphs 5 and 6.

* For murder, the trend test is applied to the monthly number of recorded victims rather than criminal incidents.

TABLE 2.3: NUMBER AND TRENDS[^] IN RECORDED CRIMINAL INCIDENTS FOR ALL OFFENCES, NSW, JANUARY 2010 TO DECEMBER 2011

Offence Category	Number of recorded criminal incidents		Trend [^] over 24-month period		
	Jan 2010 - Dec 2010	Jan 2011 - Dec 2011	Trend test result	Percentage change	
Homicide	Murder*	79	89	Stable	
	Attempted murder	34	47	Stable	
	Murder accessory, conspiracy	7	2	.	
	Manslaughter*	11	6	.	
Assault	Domestic violence related assault	26,145	26,808	Stable	
	Non-domestic violence related assault	39,851	37,066	Down	-7.0%
	Assault Police	2,373	2,479	Stable	
Sexual offences	Sexual assault	4,478	4,309	Stable	
	Indecent assault, act of indecency and other sexual offences	5,274	5,786	Stable	
Abduction and kidnapping		297	377	Up	26.9%
Robbery	Robbery without a weapon	3,520	3,000	Down	-14.8%
	Robbery with a firearm	410	361	Stable	
	Robbery with a weapon not a firearm	1,487	1,493	Stable	
Blackmail and extortion		131	97	Down	-26.0%
Harassment, threatening behaviour and private nuisance		29,083	29,411	Stable	
Other offences against the person		1,364	1,366	Stable	
Theft	Break and enter dwelling	41,245	39,407	Down	-4.5%
	Break and enter non-dwelling	17,069	17,032	Stable	
	Receiving or handling stolen goods	5,662	5,803	Stable	
	Motor vehicle theft	20,263	19,548	Stable	
	Steal from motor vehicle	44,783	48,159	Up	7.5%
	Steal from retail store	20,511	20,685	Stable	
	Steal from dwelling	20,904	20,813	Stable	
	Steal from person	8,757	8,504	Stable	
	Stock theft	545	693	Up	27.2%
	Fraud	36,266	36,421	Stable	
Other theft	34,872	35,604	Stable		
Arson		5,869	6,079	Stable	
Malicious damage to property		91,569	86,852	Stable	
Drug offences	Possession and/or use of cocaine	549	463	Down	-15.7%
	Possession and/or use of narcotics	773	761	Stable	
	Possession and/or use of cannabis	14,186	15,522	Stable	
	Possession and/or use of amphetamines	2,258	2,804	Up	24.2%
	Possession and/or use of ecstasy	1,276	1,048	Stable	
	Possession and/or use of other drugs	2,245	2,689	Up	19.8%
	Dealing, trafficking in cocaine	202	127	Down	-37.1%
	Dealing, trafficking in narcotics	430	347	Stable	
	Dealing, trafficking in cannabis	698	807	Stable	
	Dealing, trafficking in amphetamines	969	875	Stable	
	Dealing, trafficking in ecstasy	425	278	Down	-34.6%
	Dealing, trafficking in other drugs	236	241	Stable	
	Cultivating cannabis	1,336	1,272	Stable	
	Manufacture drug	99	92	Stable	
	Importing drugs	37	64	Stable	
Other drug offences	3,902	4,049	Stable		
Prohibited and regulated weapons offences		7,810	7,692	Stable	
Disorderly conduct	Trespass	8,712	8,744	Stable	
	Offensive conduct	9,374	8,662	Stable	
	Offensive language	6,320	5,745	Down	-9.1%
	Criminal intent	1,540	1,684	Stable	
Betting and gaming offences		232	127	Stable	
Liquor offences		17,440	16,154	Stable	
Pornography offences		256	315	Stable	
Prostitution offences		275	165	Stable	
Against justice procedures	Escape custody	185	224	Stable	
	Breach Apprehended Violence Order	12,187	12,598	Stable	
	Breach bail conditions	26,861	31,988	Up	19.1%
	Fail to appear	1,205	1,125	Stable	
	Resist or hinder officer	7,058	6,591	Stable	
	Other offences against justice procedures	455	474	Stable	
Transport regulatory offences		54,017	57,352	Up	6.2%
Other offences		15,504	14,189	Down	-8.5%

[^] For further explanation of **trend results**, see page 44, paragraphs 5 and 6.

* For murder and manslaughter incidents, the trend test is applied to the monthly number of recorded victims rather than criminal incidents.

TABLE 2.4: NUMBER AND OUTCOME[^] OF 24-MONTH TREND TESTS FOR MAJOR OFFENCES, NSW LOCAL GOVERNMENT AREAS (LGAs), ALL REPORTS 2004 TO 2011

	<i>Final month for 24-month trend test</i>	<i>Number of LGAs</i>	<i>Number of trend tests</i>	<i>Stable trends (%)</i>	<i>Downward trends (%)</i>	<i>Upward trends (%)</i>
2004	March	174	1,428	80.5	15.6	3.9
	June	174	1,421	80.1	18.2	1.7
	September	174	1,415	76.7	21.6	1.8
	December	173	1,397	78.5	18.2	3.4
2005	March	167	1,371	79.2	17.0	3.8
	June	167	1,358	80.6	15.4	4.1
	September	167	1,364	79.8	15.8	4.4
	December	167	1,357	83.3	11.9	4.9
2006	March	167	1,464	85.9	7.4	6.7
	June	154	1,432	87.7	7.8	4.5
	September	154	1,440	86.2	9.6	4.2
	December	154	1,442	86.6	7.8	5.6
2007	March	154	1,450	86.0	6.8	7.2
	June	154	1,447	88.3	6.8	5.0
	September	154	1,440	84.9	10.4	4.7
	December	154	1,446	87.3	7.8	4.9
2008	March	154	1,429	88.0	6.3	5.7
	June	154	1,430	86.6	8.3	5.2
	September	154	1,422	82.3	12.5	5.2
	December	154	1,422	84.0	10.3	5.6
2009	March	154	1,408	84.6	9.9	5.5
	June	154	1,412	83.9	11.5	4.5
	September	154	1,404	81.4	14.2	4.4
	December	154	1,414	83.2	12.7	4.1
2010	March	154	1,392	82.9	11.8	5.3
	June	154	1,397	84.3	11.8	3.9
	September	154	1,411	82.3	13.7	4.0
	December	154	1,397	86.6	9.7	3.7
2011	March	154	1,388	86.9	7.9	5.3
	June	154	1,393	86.9	8.8	4.3
	September	154	1,394	84.0	12.4	3.6
	December	154	1,387	86.5	9.0	4.5

[^] This table summarises the aggregate outcomes of statistical tests for significant upward or downward trends in the number of recorded criminal incidents in major offence categories over a 24-month period across all NSW LGAs with a population of 3,000 or more. The trend test used is Kendall's rank-order correlation test. A trend test was not performed if there were fewer than 20 incidents in either of the two years for the period in question, hence no trend tests for **murder** were calculated for this table. Tests ending in 2004 and 2005 were carried out on 15 major offence categories (during this period **assault** was a single offence category). Tests ending in 2006 and later years were carried out on 16 major offence categories (**assault** incidents separated into **domestic violence related** and **non-domestic violence related**). **Assault Police** incidents have been recorded separately from the two major assault series from 2008 onwards.

FIGURE 2.1A: NUMBER OF NSW LGAs WITH SIGNIFICANT UPWARD TRENDS[^], MAJOR OFFENCES, JANUARY 2009 TO DECEMBER 2010 AND JANUARY 2010 TO DECEMBER 2011

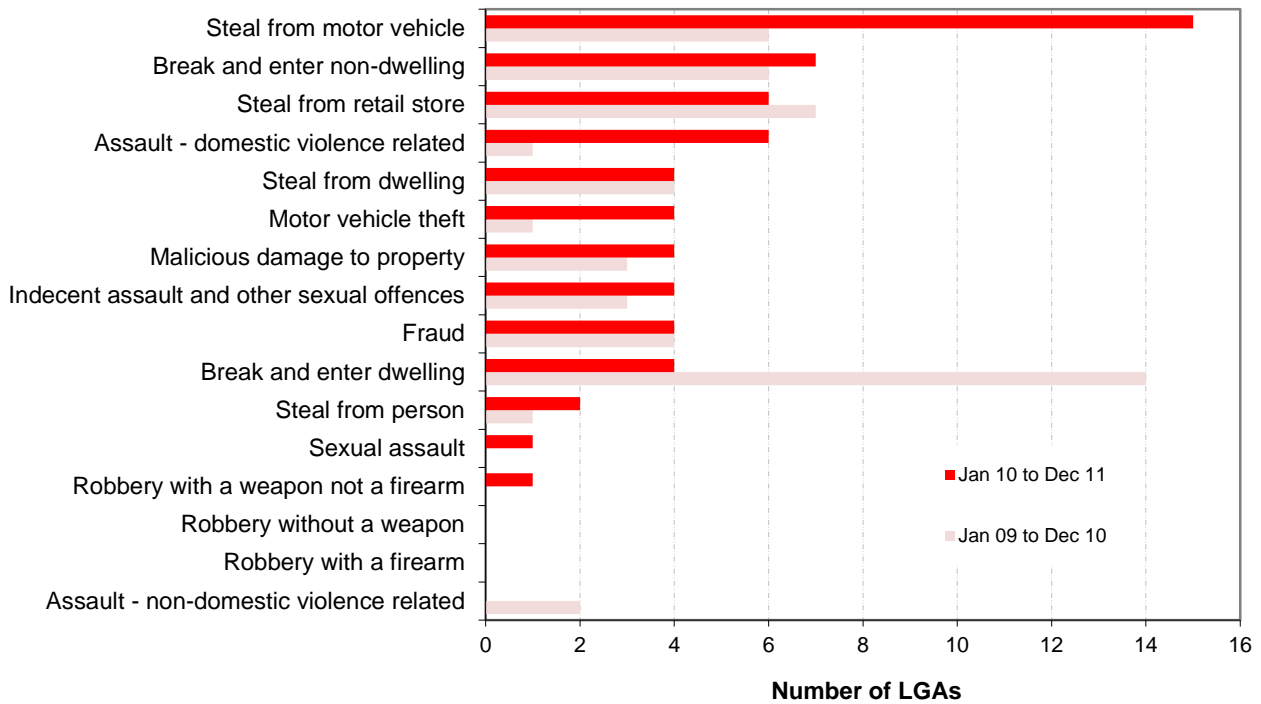
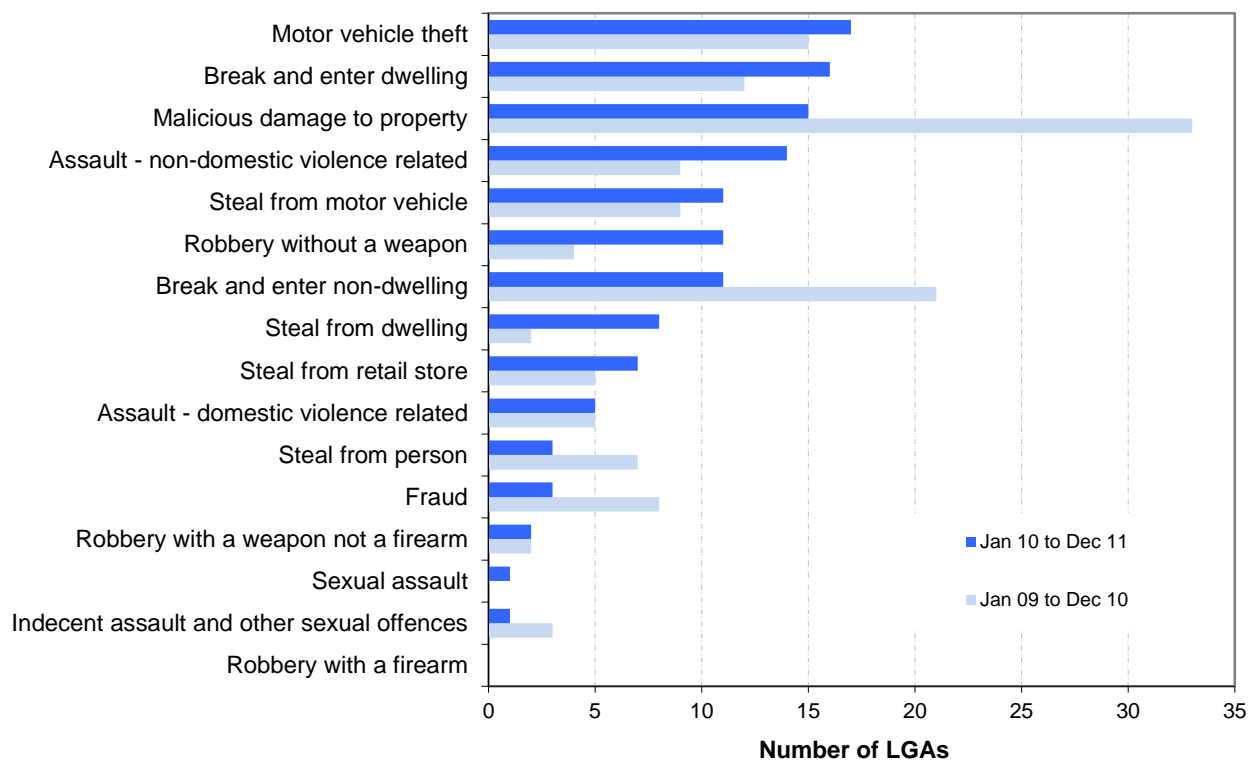


FIGURE 2.1B: NUMBER OF NSW LGAs WITH SIGNIFICANT DOWNWARD TRENDS[^], MAJOR OFFENCES, JANUARY 2009 TO DECEMBER 2010 AND JANUARY 2010 TO DECEMBER 2011



[^] For further explanation of **trend results**, see page 44, paragraphs 5 and 6.

SECTION 3:

**TRENDS, RATE COMPARISONS AND
RECORDED CRIMINAL INCIDENTS
FOR MAJOR OFFENCES
NSW REGIONS AND LGAS
2010 AND 2011**

TABLE 3.1A: TRENDS^a IN RECORDED CRIMINAL INCIDENTS FOR MAJOR OFFENCES, NSW SDs, JANUARY 2010 TO DECEMBER 2011

Statistical Division	Murder*	Assault - domestic violence related	Assault - non-domestic violence related	Sexual assault	Indecent assault, act of indecency and other sexual offences	Robbery without a weapon	Robbery with a firearm	Robbery with a weapon not a firearm	Break and enter dwelling	Break and enter non-dwelling	Motor vehicle theft	Steal from motor vehicle	Steal from retail store	Steal from dwelling	Steal from person	Fraud	Malicious damage to property
Sydney	n.c.	ns	-7.9	ns	ns	-15.8	ns	ns	-5.1	-5.7	-7.5	ns	ns	ns	ns	ns	-7.8
Hunter	n.c.	ns	-11.0	ns	ns	ns	ns	ns	ns	ns	ns	26.4	ns	ns	ns	ns	ns
Illawarra	n.c.	ns	ns	ns	ns	ns	.	45.1	ns	ns	ns	25.4	ns	10.9	ns	ns	ns
Richmond-Tweed	n.c.	ns	ns	ns	ns	ns	.	.	ns	ns	23.0	ns	ns	ns	ns	ns	ns
Mid-North Coast	n.c.	ns	ns	ns	ns	ns	.	59.4	-17.9	20.4	ns	ns	ns	ns	ns	ns	ns
Northern	n.c.	ns	ns	ns	ns	ns	.	.	ns	ns	ns	ns	14.8	ns	ns	ns	ns
North Western	n.c.	ns	ns	ns	ns	ns	.	.	ns	ns	ns	ns	ns	ns	ns	ns	ns
Central West	n.c.	11.5	ns	ns	55.8	ns	.	.	ns	-8.9	ns	ns	ns	ns	ns	ns	ns
South Eastern	n.c.	ns	ns	ns	ns	ns	.	.	ns	ns	ns	ns	-30.9	ns	-48.2	ns	ns
Murrumbidgee	n.c.	ns	-10.5	ns	ns	ns	.	.	ns	ns	ns	ns	ns	ns	ns	ns	ns
Murray	n.c.	ns	ns	ns	ns	ns	.	.	-15.2	-19.2	ns	ns	ns	ns	-40.5	ns	ns
Far West	n.c.	ns	25.1	ns	ns	ns	ns	ns	ns	ns	.	35.4	ns
NSW	ns	ns	-7.0	ns	ns	-14.8	ns	ns	-4.5	ns	ns	7.5	ns	ns	ns	ns	ns

^a For further explanation of **trend results**, see page 44, paragraphs 5 and 6.

* Any trend test for the offence of murder is for the number of victims, not incidents.

TABLE 3.1B: RATIO TO NSW RATE^a OF RECORDED CRIMINAL INCIDENTS PER 100,000 POPULATION, MAJOR OFFENCES, NSW SDs, 2011

Statistical Division	Murder*	Assault - domestic violence related	Assault - non-domestic violence related	Sexual assault	Indecent assault, act of indecency and other sexual offences	Robbery without a weapon	Robbery with a firearm	Robbery with a weapon not a firearm	Break and enter dwelling	Break and enter non-dwelling	Motor vehicle theft	Steal from motor vehicle	Steal from retail store	Steal from dwelling	Steal from person	Fraud	Malicious damage to property
Sydney	n.c.	0.9	0.9	0.8	0.9	1.3	1.3	1.2	0.9	0.6	1.0	0.9	1.0	0.8	1.3	1.2	0.8
Hunter	n.c.	1.0	1.1	1.3	1.3	0.7	0.8	0.7	1.2	1.7	1.4	1.4	1.0	1.3	0.7	0.9	1.4
Illawarra	n.c.	0.9	1.0	1.0	0.9	0.6	0.7	0.8	1.0	1.3	1.0	1.0	1.0	1.1	0.6	0.6	1.0
Richmond-Tweed	n.c.	1.0	1.1	1.6	1.2	0.4	0.7	0.6	1.0	1.7	1.0	1.0	0.9	1.3	0.7	0.5	1.0
Mid-North Coast	n.c.	1.1	1.1	1.3	1.1	0.5	0.6	0.8	1.1	2.0	1.0	1.0	0.8	1.4	0.5	0.5	1.2
Northern	n.c.	1.6	1.5	1.7	1.7	0.5	0.4	0.3	1.6	1.8	0.8	1.0	1.1	1.5	0.4	0.5	1.5
North Western	n.c.	2.7	2.0	1.9	2.1	0.7	0.3	0.9	2.1	2.2	1.1	1.4	1.2	2.2	0.5	0.6	2.0
Central West	n.c.	1.5	1.4	1.6	1.5	0.5	0.3	0.6	1.4	1.4	1.0	1.1	1.1	1.4	0.5	0.6	1.5
South Eastern	n.c.	1.0	0.9	1.1	1.1	0.2	0.0	0.1	0.7	1.1	0.4	0.7	0.5	1.0	0.2	0.5	1.1
Murrumbidgee	n.c.	1.3	1.2	1.5	1.5	0.4	0.1	0.5	1.3	1.7	0.7	1.2	1.0	1.8	0.4	0.5	1.3
Murray	n.c.	1.1	0.9	1.5	1.0	0.3	0.7	0.3	1.2	1.8	0.9	1.3	0.9	1.7	0.3	0.5	1.3
Far West	n.c.	3.5	2.3	1.6	1.7	0.3	0.0	0.4	1.8	2.0	0.5	1.1	0.6	1.8	0.6	0.8	2.0
NSW	1.0	1.0	1.0	1.0	1.0	1.0	1.0	1.0	1.0	1.0	1.0	1.0	1.0	1.0	1.0	1.0	1.0

^a For further explanation of **rate calculation populations** and the **ratio to NSW rate**, see page 44, Note 3 and paragraph 8.

* The rate calculations on the offence of murder is for the number of victims, not incidents.

TABLE 3.1C: NUMBER OF RECORDED CRIMINAL INCIDENTS FOR MAJOR OFFENCES, NSW SDs, 2011

Statistical Division 2011	Murder*	Assault - domestic violence related	Assault - non-domestic violence related	Sexual assault	Indecent assault, act of indecency and other sexual offences	Robbery without a weapon	Robbery with a firearm	Robbery with a weapon not a firearm	Break and enter dwelling	Break and enter non-dwelling	Motor vehicle theft	Steal from motor vehicle	Steal from retail store	Steal from dwelling	Steal from person	Fraud	Malicious damage to property
Sydney	n.a.	15,011	20,580	2,155	3,124	2,425	288	1,150	22,302	6,840	12,159	28,124	13,538	10,335	6,869	27,921	45,942
Hunter	n.a.	2,427	3,509	500	652	180	26	100	4,115	2,544	2,482	6,203	1,845	2,495	523	2,898	10,657
Illawarra	n.a.	1,520	2,220	267	307	108	15	74	2,433	1,366	1,231	2,881	1,198	1,353	290	1,311	5,463
Richmond-Tweed	n.a.	868	1,422	227	235	44	8	28	1,380	967	641	1,653	646	904	189	648	2,834
Mid-North Coast	n.a.	1,311	1,831	241	280	63	10	51	1,921	1,454	884	2,077	751	1,246	187	848	4,379
Northern	n.a.	1,132	1,444	187	251	39	4	11	1,578	797	408	1,257	611	823	90	494	3,285
North Western	n.a.	1,178	1,252	134	205	36	2	23	1,389	605	357	1,136	405	744	67	373	2,893
Central West	n.a.	1,008	1,326	172	215	38	3	24	1,413	621	495	1,325	572	770	103	541	3,432
South Eastern	n.a.	805	976	141	196	20	0	6	797	574	259	1,090	329	636	43	565	2,828
Murrumbidgee	n.a.	774	1,015	147	189	28	1	17	1,105	637	318	1,251	456	814	84	424	2,567
Murray	n.a.	478	560	108	93	15	4	7	753	512	281	995	296	575	44	305	1,920
Far West	n.a.	295	269	22	30	3	0	2	221	108	32	164	38	118	15	88	532
NSW	89	26,808	37,066	4,309	5,786	3,000	361	1,493	39,407	17,032	19,548	48,159	20,685	20,813	8,504	36,421	86,852

* Regional murder counts are in the Crime Mapping Tool (<http://crimetool.bocsar.nsw.gov.au/bocsar/>) and elsewhere on the BOCSAR website (www.bocsar.nsw.gov.au/)

TABLE 3.1D: NUMBER OF RECORDED CRIMINAL INCIDENTS FOR MAJOR OFFENCES, NSW SDs, 2010

Statistical Division 2010	Murder*	Assault - domestic violence related	Assault - non-domestic violence related	Sexual assault	Indecent assault, act of indecency and other sexual offences	Robbery without a weapon	Robbery with a firearm	Robbery with a weapon not a firearm	Break and enter dwelling	Break and enter non-dwelling	Motor vehicle theft	Steal from motor vehicle	Steal from retail store	Steal from dwelling	Steal from person	Fraud	Malicious damage to property
Sydney	n.a.	14,696	22,355	2,231	2,943	2,880	347	1,231	23,512	7,251	13,149	26,962	13,240	10,244	7,114	28,074	49,834
Hunter	n.a.	2,405	3,943	489	513	196	30	77	3,856	2,463	2,361	4,906	1,847	2,495	519	2,839	10,445
Illawarra	n.a.	1,487	2,199	290	345	131	9	51	2,535	1,212	1,096	2,297	1,170	1,220	309	1,129	5,882
Richmond-Tweed	n.a.	874	1,485	201	219	58	9	19	1,398	900	521	1,529	658	927	158	650	3,028
Mid-North Coast	n.a.	1,397	1,923	296	281	62	8	32	2,341	1,208	871	2,095	887	1,382	192	781	4,529
Northern	n.a.	1,099	1,512	188	210	51	3	12	1,677	892	428	1,151	532	867	74	534	3,357
North Western	n.a.	1,155	1,316	169	167	32	1	9	1,371	573	348	1,063	412	699	67	333	2,906
Central West	n.a.	904	1,369	176	138	40	2	16	1,384	682	440	1,528	524	850	91	611	3,453
South Eastern	n.a.	703	1,022	168	158	22	1	12	880	550	333	1,104	476	661	83	599	2,809
Murrumbidgee	n.a.	673	1,134	135	174	21	0	15	1,133	622	390	1,104	435	849	64	366	2,658
Murray	n.a.	472	652	95	97	20	0	12	888	634	280	916	278	584	74	280	2,040
Far West	n.a.	277	215	27	14	6	0	0	270	78	44	128	52	126	10	65	502
NSW	79	26,145	39,851	4,478	5,274	3,520	410	1,487	41,245	17,069	20,263	44,783	20,511	20,904	8,757	36,266	91,569

* Regional murder counts are in the Crime Mapping Tool (<http://crimetool.bocsar.nsw.gov.au/bocsar/>) and elsewhere on the BOCSAR website (www.bocsar.nsw.gov.au/)

TABLE 3.2A: TRENDS[^] IN RECORDED CRIMINAL INCIDENTS FOR MAJOR OFFENCES, NSW METROPOLITAN SSDs, JANUARY 2010 TO DECEMBER 2011

Metropolitan Statistical Subdivision	Murder*	Assault - domestic violence related	Assault - non-domestic violence related	Sexual assault	Indecent assault, act of indecency and other sexual offences	Robbery without a weapon	Robbery with a firearm	Robbery with a weapon not a firearm	Break and enter dwelling	Break and enter non-dwelling	Motor vehicle theft	Steal from motor vehicle	Steal from retail store	Steal from dwelling	Steal from person	Fraud	Malicious damage to property
Inner Sydney	n.c.	ns	ns	ns	ns	ns	-47.9	ns	-10.8	ns	ns	ns	ns	-14.1	ns	-9.8	ns
Eastern Suburbs	n.c.	ns	ns	ns	ns	ns	.	ns	ns	ns	ns	ns	ns	ns	ns	ns	ns
St George-Sutherland	n.c.	ns	-10.9	ns	ns	-33.8	ns	ns	-10.3	ns	-15.2	ns	ns	ns	ns	ns	-15.0
Canterbury-Bankstown	n.c.	ns	ns	ns	ns	-20.1	ns	ns	ns	ns	ns	33.1	37.7	ns	ns	ns	-13.4
Fairfield-Liverpool	n.c.	ns	ns	ns	ns	ns	ns	ns	ns	ns	ns	23.1	ns	ns	ns	ns	-4.8
Outer South Western Sydney	n.c.	ns	-10.3	ns	30.9	-13.5	.	-35.5	ns	ns	-11.7	ns	10.7	ns	ns	ns	-11.4
Inner Western Sydney	n.c.	ns	-15.8	ns	ns	-29.1	.	-40.0	-18.9	ns	-18.4	ns	ns	ns	ns	-11.1	ns
Central Western Sydney	n.c.	ns	ns	ns	ns	-13.7	ns	ns	-11.5	ns	-10.2	ns	ns	ns	ns	-3.7	ns
Outer Western Sydney	n.c.	ns	-13.0	ns	ns	ns	.	ns	ns	ns	-18.6	ns	ns	ns	ns	ns	-8.1
Blacktown	n.c.	ns	ns	ns	ns	-22.8	.	ns	ns	ns	-9.8	ns	ns	ns	ns	ns	ns
Lower Northern Sydney	n.c.	ns	ns	ns	ns	ns	.	ns	-12.9	ns	-17.2	-9.7	ns	ns	ns	ns	ns
Central Northern Sydney	n.c.	ns	ns	ns	ns	ns	.	ns	ns	ns	ns	ns	ns	ns	26.3	15.8	ns
Northern Beaches	n.c.	ns	-13.8	ns	ns	-55.0	.	.	ns	ns	-28.5	ns	-17.3	ns	ns	ns	-15.5
Central Coast	n.c.	-8.8	-9.0	ns	ns	ns	.	ns	ns	-26.8	ns	14.6	ns	ns	ns	ns	ns
Newcastle	n.c.	ns	-11.4	ns	34.1	ns	ns	ns	ns	ns	ns	22.3	ns	ns	ns	ns	ns
Wollongong	n.c.	ns	ns	ns	ns	-25.5	.	38.1	ns	ns	ns	31.8	ns	12.4	ns	ns	ns

[^] For further explanation of **trend results**, see page 44, paragraphs 5 and 6.

TABLE 3.2B: RATIO TO NSW RATE[^] OF RECORDED CRIMINAL INCIDENTS PER 100,000 POPULATION, MAJOR OFFENCES, NSW METROPOLITAN SSDs, 2011

Metropolitan Statistical Subdivision	Murder*	Assault - domestic violence related	Assault - non-domestic violence related	Sexual assault	Indecent assault, act of indecency and other sexual offences	Robbery without a weapon	Robbery with a firearm	Robbery with a weapon not a firearm	Break and enter dwelling	Break and enter non-dwelling	Motor vehicle theft	Steal from motor vehicle	Steal from retail store	Steal from dwelling	Steal from person	Fraud	Malicious damage to property
Inner Sydney	n.c.	1.1	2.5	1.2	1.4	4.1	2.1	3.0	1.0	1.2	1.5	1.7	2.8	1.3	7.6	3.0	1.3
Eastern Suburbs	n.c.	0.6	0.8	0.6	0.7	1.4	1.3	1.0	0.9	0.5	1.0	1.0	0.9	1.0	1.4	1.1	0.7
St George-Sutherland	n.c.	0.6	0.6	0.5	0.6	0.8	1.0	0.8	0.5	0.4	0.7	0.7	0.7	0.5	0.6	0.9	0.7
Canterbury-Bankstown	n.c.	1.0	0.7	0.5	0.6	1.2	2.8	1.9	0.8	0.5	1.4	1.0	0.8	0.6	0.5	1.5	0.6
Fairfield-Liverpool	n.c.	1.1	0.8	0.8	0.8	1.6	1.6	1.8	1.1	0.6	1.3	1.0	1.0	0.7	0.6	1.1	0.8
Outer South Western Sydney	n.c.	1.4	1.0	1.2	1.2	1.2	1.0	0.9	1.2	0.8	1.2	0.9	1.0	1.0	0.6	0.7	1.1
Inner Western Sydney	n.c.	0.6	0.5	0.5	0.7	1.5	1.8	1.2	0.8	0.5	1.0	1.0	1.0	0.6	0.9	1.6	0.6
Central Western Sydney	n.c.	1.1	0.9	0.7	0.9	2.1	2.2	2.2	1.2	0.7	1.3	1.0	1.0	0.8	1.0	1.5	0.7
Outer Western Sydney	n.c.	1.3	1.0	1.3	1.1	0.9	0.6	0.7	0.9	0.7	1.0	0.9	0.8	1.0	0.7	0.9	1.1
Blacktown	n.c.	1.7	1.2	1.2	1.1	1.6	1.0	1.6	1.3	0.7	1.3	1.1	1.3	1.1	1.1	1.4	1.2
Lower Northern Sydney	n.c.	0.3	0.4	0.3	0.6	0.4	0.8	0.8	0.6	0.5	0.4	0.6	1.1	0.6	0.7	1.1	0.5
Central Northern Sydney	n.c.	0.3	0.3	0.5	0.5	0.3	0.6	0.3	0.6	0.4	0.3	0.4	0.6	0.4	0.3	0.7	0.5
Northern Beaches	n.c.	0.5	0.6	0.5	0.6	0.4	0.2	0.1	0.5	0.4	0.3	0.7	0.6	0.7	0.8	0.7	0.6
Central Coast	n.c.	0.9	1.0	1.3	1.1	0.5	0.7	0.5	1.2	1.0	1.2	1.2	1.0	1.0	0.8	0.8	1.1
Newcastle	n.c.	1.0	1.1	1.4	1.3	0.8	0.8	0.8	1.2	1.6	1.5	1.5	1.1	1.3	0.8	1.0	1.4
Wollongong	n.c.	0.8	0.9	1.0	0.8	0.6	0.9	1.0	0.9	1.0	1.1	1.0	1.1	1.0	0.7	0.7	1.0

[^] For further explanation of **rate calculation populations** and the **ratio to NSW rate**, see page 44, Note 3 and paragraph 8.

* The rate calculations on the offence of murder is for the number of victims, not incidents.

TABLE 3.2C: NUMBER OF RECORDED CRIMINAL INCIDENTS FOR MAJOR OFFENCES, NSW METROPOLITAN SSDs, 2011

Metropolitan Statistical Subdivision 2011	Murder*	Assault - domestic violence related	Assault - non-domestic violence related	Sexual assault	Indecent assault, act of indecency and other sexual offences	Robbery without a weapon	Robbery with a firearm	Robbery with a weapon not a firearm	Break and enter dwelling	Break and enter non-dwelling	Motor vehicle theft	Steal from motor vehicle	Steal from retail store	Steal from dwelling	Steal from person	Fraud	Malicious damage to property
Inner Sydney	n.a.	1,466	4,567	249	409	601	37	220	1,994	1,045	1,472	4,030	2,824	1,387	3,208	5,385	5,729
Eastern Suburbs	n.a.	550	1,033	86	152	148	17	56	1,275	286	730	1,642	636	734	425	1,497	2,254
St George-Sutherland	n.a.	1,093	1,396	135	232	155	23	77	1,318	468	851	2,057	942	667	320	2,044	3,999
Canterbury-Bankstown	n.a.	1,209	1,128	107	158	163	47	129	1,492	370	1,278	2,312	734	574	214	2,494	2,601
Fairfield-Liverpool	n.a.	1,553	1,620	187	250	246	30	143	2,343	532	1,341	2,431	1,122	775	288	2,048	3,532
Outer South Western Sydney	n.a.	1,314	1,328	189	246	128	13	49	1,725	477	848	1,518	736	735	173	940	3,434
Inner Western Sydney	n.a.	435	517	58	104	117	17	48	844	238	515	1,323	535	308	194	1,546	1,430
Central Western Sydney	n.a.	1,406	1,666	154	262	303	38	159	2,276	562	1,264	2,286	1,005	790	426	2,735	3,163
Outer Western Sydney	n.a.	1,538	1,717	261	292	125	10	47	1,602	572	878	1,914	787	908	253	1,539	4,509
Blacktown	n.a.	1,897	1,834	221	280	210	16	104	2,257	476	1,057	2,290	1,156	965	390	2,227	4,525
Lower Northern Sydney	n.a.	403	683	64	164	59	12	52	1,071	391	317	1,230	972	510	246	1,803	1,980
Central Northern Sydney	n.a.	542	725	123	188	66	14	26	1,402	401	366	1,347	735	542	173	1,555	2,735
Northern Beaches	n.a.	490	768	69	113	36	3	7	655	259	223	1,175	453	515	242	844	1,829
Central Coast	n.a.	1,115	1,598	252	274	68	11	33	2,048	763	1,019	2,569	901	925	317	1,264	4,222
Newcastle	n.a.	2,029	3,038	446	559	173	23	87	3,558	2,123	2,274	5,498	1,673	2,080	495	2,636	9,190
Wollongong	n.a.	914	1,381	172	183	70	13	58	1,492	714	834	2,035	889	833	240	986	3,389

* Regional murder counts are in the Crime Mapping Tool (<http://crimetool.bocsar.nsw.gov.au/bocsar/>) and elsewhere on the BOCSAR website (www.bocsar.nsw.gov.au/)

TABLE 3.2D: NUMBER OF RECORDED CRIMINAL INCIDENTS FOR MAJOR OFFENCES, NSW METROPOLITAN SSDs, 2010

Metropolitan Statistical Subdivision 2010	Murder*	Assault - domestic violence related	Assault - non-domestic violence related	Sexual assault	Indecent assault, act of indecency and other sexual offences	Robbery without a weapon	Robbery with a firearm	Robbery with a weapon not a firearm	Break and enter dwelling	Break and enter non-dwelling	Motor vehicle theft	Steal from motor vehicle	Steal from retail store	Steal from dwelling	Steal from person	Fraud	Malicious damage to property
Inner Sydney	n.a.	1,436	4,843	260	443	654	71	224	2,236	1,194	1,392	4,422	2,714	1,614	3,441	5,972	5,736
Eastern Suburbs	n.a.	538	1,193	85	143	128	7	33	1,407	208	702	1,454	685	652	446	1,729	2,396
St George-Sutherland	n.a.	1,132	1,567	125	223	234	20	95	1,469	502	1,004	2,047	867	671	329	2,088	4,706
Canterbury-Bankstown	n.a.	1,110	1,231	107	137	204	52	141	1,688	424	1,412	1,737	533	512	205	2,400	3,002
Fairfield-Liverpool	n.a.	1,534	1,643	189	280	260	47	130	2,418	505	1,380	1,975	1,036	611	320	1,917	3,709
Outer South Western Sydney	n.a.	1,377	1,480	173	188	148	12	76	1,714	482	960	1,423	665	753	177	936	3,878
Inner Western Sydney	n.a.	415	614	59	87	165	22	80	1,041	241	631	1,337	474	319	210	1,740	1,502
Central Western Sydney	n.a.	1,370	1,825	165	254	351	52	186	2,571	571	1,408	2,116	971	772	467	2,839	3,335
Outer Western Sydney	n.a.	1,441	1,974	259	274	145	13	65	1,535	526	1,078	2,239	846	911	251	1,387	4,909
Blacktown	n.a.	1,792	1,869	232	272	272	12	103	2,250	483	1,172	2,182	1,069	876	345	2,263	5,029
Lower Northern Sydney	n.a.	365	704	69	135	85	18	28	1,229	388	383	1,362	1,023	512	237	1,546	2,008
Central Northern Sydney	n.a.	572	765	132	141	63	15	27	1,406	404	347	1,299	756	593	137	1,343	2,746
Northern Beaches	n.a.	391	891	77	109	80	3	14	702	280	312	1,127	548	517	219	778	2,165
Central Coast	n.a.	1,223	1,756	299	257	91	3	29	1,846	1,043	968	2,242	1,053	931	330	1,136	4,713
Newcastle	n.a.	1,993	3,427	406	417	177	29	74	3,279	2,004	2,093	4,494	1,689	2,044	479	2,539	8,936
Wollongong	n.a.	863	1,389	190	234	94	6	42	1,571	665	789	1,544	827	741	240	846	3,672

* Regional murder counts are in the Crime Mapping Tool (<http://crimetool.bocsar.nsw.gov.au/bocsar/>) and elsewhere on the BOCSAR website (www.bocsar.nsw.gov.au/)

TABLE 3.3A: TRENDS^a IN RECORDED CRIMINAL INCIDENTS FOR MAJOR OFFENCES, NSW LGAs, JANUARY 2010 TO DECEMBER 2011

NSW LGAs	Murder*	Assault - domestic violence related	Assault - non-domestic violence related	Sexual assault	Indecent assault, act of indecency and other sexual offences	Robbery without a weapon	Robbery with a firearm	Robbery with a weapon not a firearm	Break and enter dwelling	Break and enter non-dwelling	Motor vehicle theft	Steal from motor vehicle	Steal from retail store	Steal from dwelling	Steal from person	Fraud	Malicious damage to property
Albury	n.c.	ns	ns	ns	ns				-29.5	-47.5	ns	ns	ns	ns	-35.7	ns	ns
Armidale Dumaresq	n.c.	ns	ns	ns	ns				ns	ns	ns	ns	ns	-35.6		ns	ns
Ashfield	n.c.	ns	-16.3	ns	ns	-36.6			ns	50.0	ns	ns	ns	ns	ns	ns	ns
Auburn	n.c.	ns	ns		ns	-26.0		-60.9	-23.5	ns	-21.8	ns	ns	ns	ns	ns	ns
Ballina	n.c.	14.2	ns	ns	ns				ns	55.9	51.7	84.2	ns	ns			
Bairnald	n.c.									ns							ns
Bankstown	n.c.	ns	ns	ns	ns				ns	ns	ns	51.0	64.1	ns	ns	ns	ns
Bathurst Regional	n.c.	ns	ns	ns	136.0				ns	ns	ns	ns	ns	ns	ns	ns	ns
Bega Valley	n.c.	ns	ns						ns	ns	ns	ns	-45.9	-24.5		ns	ns
Bellingen	n.c.	ns	ns						ns	ns		ns	ns	ns			ns
Berrigan	n.c.	ns							ns	ns				ns			ns
Blacktown	n.c.	ns	ns	ns	ns	-22.8			ns	ns	-9.8	ns	ns	ns	ns	ns	ns
Bland	n.c.		ns						ns			-44.7					ns
Blayney	n.c.		ns											ns			ns
Blue Mountains	n.c.	ns	ns	ns	ns				ns	34.1	-32.4	ns	ns	ns	ns	ns	-21.7
Bogan	n.c.	ns	ns														ns
Bombala	n.c.																ns
Boorowa	n.c.																ns
Botany Bay	n.c.	ns	ns		ns				ns	ns	ns	ns	-42.9	ns	ns	ns	ns
Bourke	n.c.	ns	ns						76.8	ns	ns	67.5		ns			ns
Brewarrina	n.c.	ns	ns						ns	ns		-7.1		ns			ns
Broken Hill	n.c.	ns	ns						-20.2	ns	ns	ns	ns			44.8	ns
Burwood	n.c.	ns	ns		ns				-27.2	ns	ns	ns	19.8	ns	ns	ns	ns
Byron	n.c.	ns	ns	ns	ns				ns	ns	ns	ns	ns	ns	ns	ns	ns
Cabonne	n.c.	ns	ns							ns		ns	ns	ns			ns
Camden	n.c.	ns	ns	ns	ns				-15.0	ns	-17.8	-30.4	ns	ns		ns	-16.0
Campbelltown	n.c.	ns	-10.3	ns	33.6			-41.1	ns	ns	-9.4	ns	11.5	ns	ns	ns	-10.4
Canada Bay	n.c.	ns	-22.7						ns	ns	-26.3	ns	ns	ns	ns	ns	ns
Canterbury	n.c.	ns	-17.0	ns	ns	-25.4			ns	ns	-18.5	ns	ns	ns	ns	ns	ns
Carrathool	n.c.																-16.1
Central Darling	n.c.	ns	ns						ns								ns
Cessnock	n.c.	ns	-17.5	ns	ns				35.8	ns	39.2	55.8	ns	ns	ns	ns	ns
Clarence Valley	n.c.	ns	ns	ns	ns				ns	52.8	ns	ns	ns	ns	ns	ns	ns
Cobar	n.c.	ns	ns						ns			ns					32.7
Coffs Harbour	n.c.	ns	ns	ns	ns				ns	ns	ns	-25.6	ns	ns	ns	ns	ns
Conargo	n.c.																ns
Coolamon	n.c.									ns							ns
Cooma-Monaro	n.c.	175.0	ns						ns	ns	ns	ns	ns	ns			ns
Coonamble	n.c.	ns	ns						ns	ns		ns	ns	ns			ns
Cootamundra	n.c.	ns	ns						ns	ns		71.4		ns			ns
Corowa Shire	n.c.	ns	ns						ns	ns	ns	ns	ns	ns			ns
Cowra	n.c.	-25.3	ns						ns	-39.7	ns	-43.2		ns		ns	ns
Deniliquin	n.c.	ns	ns						ns	ns		46.2		ns			ns
Dubbo	n.c.	ns	ns	ns	ns				ns	ns	ns	ns	ns	ns	ns	ns	ns
Dungog	n.c.								ns	ns				ns			ns
Eurobodalla	n.c.	ns	ns	ns	ns				ns	52.9	ns	ns	ns	ns		ns	ns
Fairfield	n.c.	ns	ns	ns	ns		ns		ns	ns	-15.3	ns	ns	ns	ns	ns	ns
Forbes	n.c.	ns	ns						ns	-37.5		ns		ns		ns	ns
Gilgandra	n.c.	ns	-51.8						ns	ns		ns		ns			ns
Glen Innes Severn	n.c.	ns	ns						ns	ns		ns		ns		ns	ns
Gloucester	n.c.																ns
Gosford	n.c.	-21.0	ns	ns	ns	ns			ns	-32.2	ns	ns	ns	ns	ns	ns	ns
Goulburn Mulwaree	n.c.	ns	-31.2	ns	ns				ns	ns	ns	ns	ns	ns			-22.8
Great Lakes	n.c.	ns	ns	ns	ns				ns	ns	ns	102.8	ns	ns		ns	ns
Greater Hume Shire	n.c.								ns	ns		ns		ns			ns
Greater Taree	n.c.	ns	ns	ns	ns				-48.5	ns	ns	ns	-31.2	ns	ns	ns	ns
Griffith	n.c.	ns	-9.2						-37.2	ns	-43.1	ns	ns	ns		ns	-13.3
Gundagai	n.c.																ns
Gunnedah	n.c.	ns	ns						ns	70.6	ns	ns	ns	ns		ns	ns
Guyra	n.c.													ns			ns
Gwydir	n.c.																ns
Harden	n.c.																ns
Hawkesbury	n.c.	ns	ns	ns	ns				ns	ns	ns	ns	ns	ns	ns	ns	ns
Hay	n.c.																ns
Holroyd	n.c.	ns	ns	ns	ns	-27.2		ns	ns	ns	ns	ns	ns	ns	ns	ns	-14.8
Hornsby	n.c.	ns	ns	ns	ns				ns	ns	ns	ns	ns	ns	ns	ns	ns
Hunters Hill	n.c.		ns						ns			ns		ns		ns	ns
Hurstville	n.c.	ns	ns		ns	-45.7			ns	ns	-27.5	ns	-22.4	ns	ns	ns	ns
Inverell	n.c.	ns	ns						ns	ns		ns	ns	-22.6		ns	ns
Jerilderie	n.c.																ns
Junee	n.c.		ns						ns					ns			20.9
Kempsey	n.c.	ns	ns	ns	ns				ns	72.2	ns	ns	ns	ns	ns	ns	ns
Kiama	n.c.	ns	ns						ns	ns	ns	ns		ns		ns	ns
Kogarah	n.c.	ns	ns				ns		ns	ns	-32.5	ns	ns	ns		ns	-22.8
Ku-ring-gai	n.c.	ns	ns		ns				ns	ns	ns	ns	ns	ns		ns	-17.2
Kyogle	n.c.	ns	ns						ns	ns	ns	ns		ns			-21.3
Lachlan	n.c.	ns	ns						ns	-45.0		ns		ns			ns
Lake Macquarie	n.c.	ns	ns	13.2	ns	ns			ns	ns	ns	39.2	19.1	ns	ns	ns	ns
Lane Cove	n.c.	114.3	ns						-14.3	ns	ns	ns		ns		ns	26.7
Leeton	n.c.	ns	ns						45.2	ns	ns	ns		ns			-17.2

TABLE 3.3A: TRENDS[^] IN RECORDED CRIMINAL INCIDENTS FOR MAJOR OFFENCES, NSW LGAs, JANUARY 2010 TO DECEMBER 2011

NSW LGAs	Murder*	Assault - domestic violence related	Assault - non-domestic violence related	Sexual assault	Indecent assault, act of indecency and other sexual offences	Robbery without a weapon	Robbery with a firearm	Robbery with a weapon not a firearm	Break and enter dwelling	Break and enter non-dwelling	Motor vehicle theft	Steal from motor vehicle	Steal from retail store	Steal from dwelling	Steal from person	Fraud	Malicious damage to property
Leichhardt	n.c.	ns	ns	.	ns	.	.	.	ns	ns	ns	-30.6	ns	ns	ns	ns	ns
Lismore	n.c.	ns	ns	ns	ns	.	.	.	ns	ns	ns	ns	ns	ns	ns	ns	ns
Lithgow	n.c.	23.3	ns	ns	ns	ns	ns	ns	ns	ns	-39.1	ns
Liverpool	n.c.	ns	ns	ns	ns	ns	.	ns	ns	ns	10.3	43.0	ns	ns	-18.1	ns	ns
Liverpool Plains	n.c.	ns	ns	ns	ns	.	.	.	ns	.	.	ns
Lockhart	n.c.	ns
Lord Howe Island	n.c.
Maitland	n.c.	ns	-17.8	ns	ns	.	.	.	ns	ns	ns	ns	ns	ns	ns	ns	ns
Manly	n.c.	32.4	ns	.	ns	.	.	.	ns	ns	ns	ns	-13.8	ns	ns	ns	ns
Marrickville	n.c.	ns	ns	ns	ns	ns	.	ns	-29.8	-13.1	ns	-25.5	ns	-30.9	ns	ns	ns
Mid-Western Regional	n.c.	ns	ns	ns	ns	ns	ns	ns	ns	ns	ns	.	20.8
Moree Plains	n.c.	ns	ns	.	ns	.	.	.	ns	ns	ns	57.0	ns	ns	.	ns	ns
Mosman	n.c.	ns	ns	ns	ns	ns	ns	ns	ns	.	ns	ns
Murray	n.c.	ns	ns	.	ns	.	ns	.	.	ns
Murrumbidgee	n.c.	ns
Muswellbrook	n.c.	ns	ns	ns	-53.2	ns	122.8	ns	ns	.	ns	ns
Nambucca	n.c.	ns	-31.5	ns	ns	ns	ns	ns	ns	.	ns	ns
Narrabri	n.c.	-38.6	ns	ns	ns	ns	ns	ns	ns	.	27.8	ns
Narrandera	n.c.	ns	ns	ns	.	.	ns	.	ns	.	.	ns
Narromine	n.c.	ns	ns	ns	ns	ns	ns	.	ns	.	.	ns
Newcastle	n.c.	ns	-12.6	ns	31.4	-17.4	.	ns	ns	ns	ns	ns	ns	ns	ns	ns	ns
North Sydney	n.c.	ns	ns	.	ns	.	.	.	ns	ns	ns	ns	-9.5	ns	ns	ns	ns
Oberon	n.c.	ns
Orange	n.c.	ns	ns	ns	ns	.	.	.	ns	ns	ns	ns	ns	ns	ns	ns	ns
Palerang	n.c.	ns	ns	ns	ns	.	.	.	ns	.	.	ns
Parkes	n.c.	ns	ns	ns	ns	ns	-29.7	ns	ns	.	ns	ns
Parramatta	n.c.	ns	ns	ns	ns	ns	ns	ns	ns	ns	ns	ns	ns	ns	-18.9	ns	ns
Penrith	n.c.	ns	-14.8	ns	ns	ns	ns	ns	ns	ns	-17.7	-18.2	ns	ns	ns	ns	-8.1
Pittwater	n.c.	ns	ns	ns	ns	.	.	.	ns	ns	ns	ns	ns	ns	ns	64.1	ns
Port Macquarie-Hastings	n.c.	ns	ns	ns	ns	.	.	.	-32.5	ns	ns	ns	ns	ns	ns	ns	ns
Port Stephens	n.c.	ns	ns	ns	ns	.	.	.	-13.3	ns	ns	ns	ns	ns	ns	ns	ns
Queanbeyan	n.c.	ns	ns	ns	ns	.	.	.	ns	ns	ns	ns	ns	ns	.	ns	ns
Randwick	n.c.	ns	ns	ns	ns	ns	ns	ns	ns	ns	ns	28.2	ns	ns	ns	ns	ns
Richmond Valley	n.c.	ns	ns	ns	ns	.	.	.	ns	ns	51.4	ns	ns	45.2	.	ns	ns
Rockdale	n.c.	ns	ns	ns	ns	-35.4	.	ns	ns	-29.4	ns	ns	ns	52.3	ns	ns	ns
Ryde	n.c.	ns	ns	.	ns	ns	.	.	ns	ns	-24.2	ns	ns	ns	58.5	ns	ns
Shellharbour	n.c.	ns	-15.9	ns	ns	.	.	.	ns	ns	ns	ns	ns	26.8	ns	ns	ns
Shoalhaven	n.c.	ns	ns	ns	ns	ns	.	.	ns	ns	ns	ns	ns	ns	ns	ns	ns
Singleton	n.c.	ns	ns	ns	ns	-43.4	ns	ns	ns	.	ns	ns
Snowy River	n.c.	ns
Strathfield	n.c.	ns	ns	.	ns	-31.4	.	.	-36.0	-43.1	-20.7	ns	ns	ns	ns	ns	ns
Sutherland Shire	n.c.	ns	ns	ns	ns	ns	.	.	-31.6	ns	ns	ns	45.5	-23.0	ns	ns	-17.4
Sydney	n.c.	ns	ns	ns	ns	ns	ns	ns	ns	ns	ns	ns	ns	ns	ns	-11.4	ns
Tamworth Regional	n.c.	ns	ns	ns	ns	ns	.	.	ns	ns	ns	ns	43.9	ns	ns	ns	ns
Temora	n.c.	ns	-35.1	.	.	ns
Tenterfield	n.c.	64.3	ns	-58.1	ns	.	ns	.	-51.2	.	.	ns
The Hills Shire	n.c.	-10.4	ns	ns	114.3	ns	.	.	ns	-33.8	ns	ns	ns	ns	ns	9.7	ns
Tumbarumba	n.c.	ns
Turnut Shire	n.c.	ns	ns	ns	.	ns	ns	.	ns	.	.	ns
Tweed	n.c.	ns	ns	ns	ns	.	.	.	ns	-21.5	ns	-17.4	-18.4	ns	ns	ns	-20.9
Unincorporated Far West	n.c.
Upper Hunter Shire	n.c.	ns	ns	ns	ns	.	ns	.	ns	.	ns	ns
Upper Lachlan Shire	n.c.	ns
Uralla	n.c.	ns	ns
Urana	n.c.	ns
Wagga Wagga	n.c.	ns	ns	ns	ns	.	.	.	ns	ns	ns	ns	ns	ns	57.1	ns	ns
Wakool	n.c.	ns
Walcha	n.c.	ns
Walgett	n.c.	-17.3	ns	ns	ns	ns	ns	.	ns	.	ns	ns
Warren	n.c.	ns	ns	ns	ns
Warringah	n.c.	ns	-19.7	ns	ns	-58.0	.	.	ns	ns	-37.1	ns	ns	ns	ns	ns	ns
Warrumbungle Shire	n.c.	ns	ns	-25.9	ns	.	ns	.	ns	.	.	ns
Waverley	n.c.	ns	ns	.	ns	ns	.	.	-27.2	ns	ns	ns	ns	ns	ns	ns	ns
Weddin	n.c.	ns
Wellington	n.c.	ns	ns	ns	ns	ns	ns	ns	ns	.	.	-24.5
Wentworth	n.c.	ns	ns	ns	ns	ns	ns	.	ns	.	.	ns
Willoughby	n.c.	ns	ns	.	ns	.	.	.	ns	ns	-34.9	-33.1	ns	ns	ns	ns	ns
Wingecarribee	n.c.	ns	ns	ns	ns	.	.	.	ns	ns	ns	ns	ns	ns	.	ns	ns
Wollondilly	n.c.	ns	ns	ns	ns	ns	73.2	.	ns	.	ns	ns
Wollongong	n.c.	ns	ns	ns	-24.3	-32.5	.	21.6	ns	ns	ns	44.1	ns	9.3	ns	ns	ns
Woollahra	n.c.	ns	ns	.	ns	.	.	.	ns	ns	ns	ns	ns	ns	ns	ns	ns
Wyong	n.c.	ns	ns	-16.9	ns	ns	.	.	31.0	ns	ns	17.0	ns	ns	ns	ns	ns
Yass Valley	n.c.	ns	ns	ns	.	-52.2	ns
Young	n.c.	ns	ns	ns	ns	ns	ns	-22.2	.	.	ns	ns
NSW	ns	ns	-7.0	ns	ns	-14.8	ns	ns	-4.5	ns	ns	7.5	ns	ns	ns	ns	ns

[^] For further explanation of **trend results**, see page 44, paragraphs 5 and 6.* Any trend test for the offence of **murder** is for the number of victims, not incidents.

TABLE 3.3B: RATIO TO NSW RATE* OF RECORDED CRIMINAL INCIDENTS PER 100,000 POPULATION, MAJOR OFFENCES, NSW LGAs, 2011

NSW LGAs	Murder*	Assault - domestic violence related	Assault - non-domestic violence related	Sexual assault	Indecent assault, act of indecency and other sexual offences	Robbery without a weapon	Robbery with a firearm	Robbery with a weapon not a firearm	Break and enter dwelling	Break and enter non-dwelling	Motor vehicle theft	Steal from motor vehicle	Steal from retail store	Steal from dwelling	Steal from person	Fraud	Malicious damage to property
Albury	n.c.	1.2	1.3	2.0	1.1	0.5	1.2	0.5	1.5	1.4	1.1	1.9	1.7	2.0	0.6	0.7	1.8
Armidale Dumaresq	n.c.	1.5	1.4	2.3	1.5	0.1		0.4	1.2	0.8	0.3	0.6	1.5	0.9	0.8	0.5	1.2
Ashfield	n.c.	0.7	0.5	0.9	1.0	1.5	0.9	0.9	0.7	0.6	0.9	0.7	1.1	0.6	0.4	1.5	0.6
Auburn	n.c.	0.9	0.9	0.4	0.8	2.4	1.3	1.7	0.8	0.7	1.4	0.9	0.5	0.7	1.3	1.5	0.6
Ballina	n.c.	0.9	0.9	0.9	1.2	0.4		0.3	0.9	2.0	0.8	1.2	0.7	1.3	0.3	0.5	0.9
Bairnald	n.c.																
Bankstown	n.c.	1.1	0.8	0.6	0.6	1.0	3.0	1.7	0.9	0.6	1.6	1.2	0.9	0.6	0.5	1.8	0.7
Bathurst Regional	n.c.	1.5	1.4	1.6	1.8	1.0		0.8	1.2	1.4	1.0	1.2	1.4	1.3	0.9	0.7	1.5
Bega Valley	n.c.	0.9	0.9	0.6	1.0	0.1			0.5	1.2	0.3	0.6	0.3	0.9	0.2	0.3	1.0
Bellingen	n.c.	0.6	0.6	1.2	0.7	0.4		0.4	0.6	2.2	0.7	0.8	0.1	0.7	0.1	0.3	0.6
Berrigan	n.c.	0.6	0.4	0.2	0.3				0.7	1.3	0.3	0.3	0.1	0.9	0.2	0.2	0.8
Blacktown	n.c.	1.7	1.2	1.2	1.1	1.6	1.0	1.6	1.3	0.7	1.3	1.1	1.3	1.1	1.1	1.4	1.2
Bland	n.c.	1.0	0.9	1.8	0.4	0.4			0.6	1.3	0.1	0.5	0.2	0.8		0.3	0.8
Blayney	n.c.	0.6	0.8	2.1	1.0				0.6	1.1	0.7	0.5	0.2	1.0	0.2	0.4	0.9
Blue Mountains	n.c.	1.0	0.8	0.9	1.0	0.4	0.3	0.4	0.7	1.0	0.4	0.7	0.4	0.9	0.3	0.7	1.1
Bogan	n.c.	1.9	1.7	1.7	1.2			1.6	0.7	1.6	1.1	0.9	0.6	1.6		0.2	1.3
Bombala	n.c.																
Boorowa	n.c.																
Botany Bay	n.c.	0.9	0.9	0.7	0.9	2.3	2.0	1.6	0.8	0.5	1.5	1.2	2.1	0.8	3.1	2.3	1.2
Bourke	n.c.	11.7	5.6	3.3	3.7	0.8		1.6	5.9	3.9	4.2	3.3	2.0	5.2	1.7	1.1	3.5
Brewarrina	n.c.																
Broken Hill	n.c.	2.7	2.1	1.5	1.6	0.4		0.5	1.8	1.9	0.4	1.2	0.6	1.8	0.6	0.8	1.9
Burwood	n.c.	0.7	0.8	0.6	1.1	1.9	1.2	1.4	0.9	0.8	1.1	1.2	2.9	0.5	1.9	2.6	0.8
Byron	n.c.	0.7	2.1	1.8	1.3	0.4		0.4	0.9	1.8	0.8	1.0	0.9	1.8	2.0	0.5	1.0
Cabonne	n.c.	0.8	0.6	1.4	0.6				0.3	1.2	0.3	0.4	0.1	0.9	0.1	0.1	0.5
Camden	n.c.	0.9	0.5	0.8	0.8	0.3	0.4	0.4	0.7	0.7	1.0	0.7	0.6	0.7	0.1	0.6	0.7
Campbelltown	n.c.	1.7	1.4	1.4	1.5	1.9	1.6	1.4	1.7	0.9	1.5	1.0	1.4	1.2	0.9	0.8	1.4
Canada Bay	n.c.	0.4	0.3	0.3	0.3	0.5	1.8	0.8	0.7	0.5	0.8	0.9	0.3	0.5	0.3	0.9	0.5
Canterbury	n.c.	0.8	0.5	0.5	0.6	1.5	2.6	2.0	0.8	0.3	1.2	0.8	0.5	0.5	0.6	1.0	0.6
Carrathool	n.c.																
Central Darling	n.c.																
Cessnock	n.c.	1.5	1.1	1.9	1.5	0.5	0.8	0.9	1.3	2.5	2.0	1.3	0.6	1.7	0.4	0.7	1.3
Clarence Valley	n.c.	0.9	1.0	1.4	1.1	0.1	0.4	0.4	1.0	2.2	0.9	1.0	0.8	1.3	0.3	0.4	1.1
Cobar	n.c.	2.1	2.1	1.6	0.2		3.9		1.1	1.6	0.9	0.8	0.9	3.0	0.2	0.5	2.4
Coffs Harbour	n.c.	1.2	1.2	1.1	1.2	0.6	1.9	1.1	0.9	1.7	1.0	1.1	1.2	1.1	0.5	0.5	1.2
Conargo	n.c.																
Coolamon	n.c.	0.5	0.3	0.8	3.2				0.8	3.3	0.9	0.2		1.3		0.4	1.1
Cooma-Monaro	n.c.	1.4	1.2	1.1	1.7	0.2			0.8	1.0	0.3	0.5	0.5	1.2	0.2	0.5	1.3
Coonamble	n.c.	3.5	2.7	1.9	2.0	1.7		1.1	7.2	7.8	1.6	2.8	1.9	3.5	0.2	0.4	4.6
Cootamundra	n.c.	1.7	1.3	2.6	2.1	0.9			0.6	1.6	0.1	0.7	0.3	1.4	0.4	0.3	1.4
Corowa Shire	n.c.	0.7	0.5	1.0	0.7				0.6	1.9	0.7	0.8	0.3	1.5	0.1	0.3	1.2
Cowra	n.c.	1.4	2.2	1.6	2.3	0.6			0.9	1.2	0.7	0.9	0.4	1.5	0.4	0.7	2.1
Deniliquin	n.c.	1.3	1.3	2.2	1.6	0.6		0.6	1.5	2.1	0.4	0.7	0.4	2.2		0.4	2.0
Dubbo	n.c.	2.0	1.7	1.6	2.2	0.9		1.3	1.9	1.0	1.1	1.5	1.6	2.1	0.7	0.8	1.7
Dungog	n.c.	0.4	0.4	0.4	0.7				0.5	2.1	0.5	0.3	0.1	1.4	0.2	0.3	1.0
Eurobodalla	n.c.	1.0	1.0	1.4	1.3	0.1		0.3	1.3	1.8	0.6	1.3	1.2	1.5	0.1	0.4	1.2
Fairfield	n.c.	1.0	0.8	0.7	0.6	1.5	1.6	1.8	1.0	0.5	1.1	0.7	0.7	0.6	0.6	1.0	0.6
Forbes	n.c.	2.1	1.6	2.2	1.2		2.1		1.1	1.1	0.6	0.9	0.5	2.6	0.1	0.5	2.2
Gilgandra	n.c.	1.7	1.1	0.7	3.2				1.8	3.3	1.2	1.2	0.5	2.1	0.4	1.0	1.9
Glen Innes Severn	n.c.	0.9	1.2	1.8	1.9				1.2	1.5	0.4	0.9	0.5	2.0	0.1	0.5	1.1
Gloucester	n.c.	0.6	0.4	0.3	0.2				0.4	2.0	0.6	0.3	0.1	0.8	0.3	0.3	0.6
Gosford	n.c.	0.7	0.8	1.0	0.8	0.5	0.5	0.4	1.2	0.9	1.1	1.0	0.9	0.9	0.9	0.7	0.9
Goulburn Mulwaree	n.c.	1.3	1.0	1.6	1.4	0.4		0.2	0.6	1.2	0.4	0.5	0.8	1.1	0.2	1.0	1.3
Great Lakes	n.c.	1.5	1.1	1.2	1.3	0.3	1.1	0.9	1.0	1.3	0.7	0.9	0.8	1.5	0.3	0.6	1.2
Greater Hume Shire	n.c.	0.5	0.4	1.6	0.8	0.2			0.6	3.1	0.5	0.7	0.1	1.0		0.4	0.6
Greater Taree	n.c.	1.3	1.2	1.6	1.4	0.5		0.8	1.3	2.0	1.0	1.0	1.0	1.5	0.6	0.8	1.3
Griffith	n.c.	1.9	1.6	0.5	0.9	0.7	0.8	1.9	1.3	1.4	0.9	1.3	1.6	1.2	0.4	0.5	1.5
Gundagai	n.c.	0.9	0.7	0.4	1.3				0.3	0.8	0.4	0.4		0.7		1.3	0.9
Gunnedah	n.c.	1.9	1.5	1.8	1.5			0.4	1.6	3.0	1.1	2.3	1.1	2.1		0.5	1.7
Guvera	n.c.	1.7	1.4		0.5				0.9	1.7	0.2	0.1	0.2	1.5	0.4	0.2	1.2
Gwydir	n.c.	0.7	0.7	1.9	0.7				0.4	0.4	0.3	0.1	0.1	1.2	0.2	0.2	0.5
Harden	n.c.	0.4	0.5	1.4	0.3	0.7			0.5	0.6	0.3	0.5		0.6		0.5	0.6
Hawkesbury	n.c.	1.0	1.0	1.4	1.2	0.5	1.3	1.1	0.7	1.0	1.0	1.0	0.8	1.0	0.5	0.8	1.1
Hay	n.c.	1.7	1.0	2.5	1.9				1.4	1.0	0.3	0.9	0.4	1.0		1.1	1.1
Holroyd	n.c.	1.2	0.7	0.8	0.9	1.4	1.4	2.2	1.4	0.7	1.3	0.9	0.4	0.8	0.6	1.2	0.7
Hornsby	n.c.	0.4	0.4	0.5	0.5	0.3	0.6	0.3	0.5	0.4	0.3	0.4	0.7	0.4	0.4	0.6	0.5
Hunters Hill	n.c.	0.3	0.3	0.1	0.5	0.2		0.7	0.5	0.3	0.7	0.7	0.1	0.6	0.1	0.3	0.6
Hurstville	n.c.	0.8	0.7	0.4	0.7	1.3	2.7	0.9	0.7	0.7	0.8	0.8	1.3	0.6	1.2	1.2	0.7
Inverell	n.c.	1.6	1.4	2.4	2.0	0.1	1.2	0.3	0.8	1.5	0.3	0.6	1.2	1.5	0.2	0.4	1.6
Jerilderie	n.c.																
Junee	n.c.	0.7	0.7	2.7	0.4				1.0	1.1	0.6	0.5	0.2	1.7	0.3	0.3	1.1
Kempsey	n.c.	1.7	1.3	2.2	1.4	0.7	1.4	1.5	2.9	2.9	2.1	1.1	0.6	2.4	0.8	0.5	1.7
Kiama	n.c.	0.4	0.5	0.4	0.8	0.5	1.0		0.7	0.9	0.8	0.7	0.2	0.5	0.2	0.5	0.5
Kogarah	n.c.	0.5	0.4	0.3	0.7	0.8		1.3	0.7	0.3	0.5	0.6	0.1	0.5	0.2	0.7	0.6
Ku-ring-gai	n.c.	0.1	0.2	0.1	0.4	0.3	0.4	0.1	0.8	0.4	0.1	0.4	0.1	0.5	0.2	0.6	0.4
Kyogle	n.c.	1.2	1.0	1.4	1.5				1.0	3.0	1.6	0.9	0.3	1.3	0.3	0.4	1.1
Lachlan	n.c.	2.0	1.5	2.0	2.7	0.4			1.9	3.4	1.0	1.3	0.5	2.1	0.2	1.0	1.5
Lake Macquarie	n.c.	0.8	0.8	1.3	1.0	0.6	0.6	0.6	0.9	1.5	1.5	1.2	1.1	1.0	0.4	0.8	1.2
Lane Cove	n.c.	0.4	0.2	0.4	0.5	0.1	1.2	0.4	0.5	0.5	0.2	0.5	0.1	0.4	0.4	0.7	0.5
Leeton	n.c.	1.7	1.5	2.8	2.9	0.4		0.8	2.1	2.8	1.1	0.8	0.7	1.7	0.3	0.3	1.2

TABLE 3.3B: RATIO TO NSW RATE* OF RECORDED CRIMINAL INCIDENTS PER 100,000 POPULATION, MAJOR OFFENCES, NSW LGAs, 2011

NSW LGAs	Murder*	Assault - domestic violence related	Assault - non-domestic violence related	Sexual assault	Indecent assault, act of indecency and other sexual offences	Robbery without a weapon	Robbery with a firearm	Robbery with a weapon not a firearm	Break and enter dwelling	Break and enter non-dwelling	Motor vehicle theft	Steal from motor vehicle	Steal from retail store	Steal from dwelling	Steal from person	Fraud	Malicious damage to property
Leichhardt	n.c.	0.8	0.7	0.5	0.8	1.0	0.4	1.2	0.7	0.6	1.5	1.0	0.8	0.9	0.5	1.1	0.8
Lismore	n.c.	1.2	1.4	1.8	1.7	0.7	0.4	0.5	1.2	1.6	1.0	0.9	1.6	1.2	0.5	0.7	1.1
Lithgow	n.c.	1.4	1.3	0.9	1.4	0.5		0.7	1.3	1.4	0.6	0.8	0.9	2.0	0.4	0.4	1.9
Liverpool	n.c.	1.2	0.9	0.9	1.0	1.7	1.5	1.8	1.3	0.6	1.5	1.2	1.4	0.8	0.6	1.2	0.9
Liverpool Plains	n.c.	1.4	1.0	1.5	1.7	0.6			1.0	1.3	0.5	0.4	0.1	1.4	0.3	0.3	0.7
Lockhart	n.c.	0.4	0.4	2.0	0.8				0.5	2.4	0.4	0.2	0.2	1.3		0.2	0.6
Lord Howe Island	n.c.																
Maitland	n.c.	1.1	1.0	1.4	1.6	0.6		0.8	1.0	1.6	1.1	1.5	1.1	1.6	0.8	1.2	1.5
Manly	n.c.	0.6	1.2	0.5	0.7	0.5	0.5	0.3	0.6	0.3	0.3	0.8	0.9	1.3	2.0	0.6	0.7
Marrickville	n.c.	1.0	0.9	0.7	0.9	1.6	2.5	1.6	0.8	0.6	1.7	1.2	0.7	0.9	1.3	1.3	1.0
Mid-Western Regional	n.c.	1.3	1.6	1.6	0.8	0.4		0.2	1.0	1.6	0.4	0.9	0.7	1.3	0.2	0.4	1.8
Moree Plains	n.c.	3.6	2.7	1.4	1.9	1.7			4.1	4.3	3.1	2.8	1.7	2.6	1.2	0.9	2.6
Mosman	n.c.	0.3	0.3	0.2	0.7	0.4		0.2	0.6	0.3	0.3	0.8	0.4	0.6	0.3	0.5	0.5
Murray	n.c.	0.6	0.2	1.1	0.3				0.7	1.3	0.4	1.2	0.3	1.0	0.2	0.4	0.5
Murrumbidgee	n.c.																
Muswellbrook	n.c.	1.2	1.1	0.7	0.9			0.6	1.7	1.7	1.1	2.0	0.6	1.6	0.3	0.4	1.8
Nambucca	n.c.	1.2	1.1	0.4	0.5	0.4		0.8	0.9	2.7	1.4	1.0	0.7	1.2	0.5	0.3	1.1
Narrabri	n.c.	0.8	1.2	1.3	1.4	0.2	1.5		1.3	1.7	0.9	1.1	0.7	1.6	0.2	0.7	1.5
Narrandera	n.c.	1.5	1.4	1.3	1.2				1.7	1.1	0.5	0.9	0.9	1.2		0.5	1.6
Narromine	n.c.	2.2	1.4	1.2	2.9	1.4		2.1	2.4	2.3	1.7	2.1	0.7	1.9	0.2	0.4	1.9
Newcastle	n.c.	1.1	1.6	1.3	1.3	1.4	1.7	1.2	1.6	1.6	1.8	2.1	1.4	1.5	1.5	1.3	1.7
North Sydney	n.c.	0.5	0.7	0.5	0.6	0.7	0.9	0.6	0.6	0.9	0.4	0.6	0.6	0.6	1.1	1.2	0.6
Oberon	n.c.	0.9	0.6	1.5	1.1	0.4			0.4	0.5	0.6	0.4		0.6	0.2	0.6	1.0
Orange	n.c.	1.8	1.9	1.7	1.3	0.6	1.0	1.5	2.9	1.7	2.2	2.0	2.5	1.5	0.8	0.7	1.7
Palerang	n.c.	0.7	0.4	1.0	0.1	0.2		0.3	0.2	0.6	0.2	0.2	0.1	0.7	0.1	0.2	0.4
Parkes	n.c.	2.1	1.5	1.9	1.6	0.5		0.6	1.2	1.4	0.6	0.8	0.7	1.7		0.8	2.1
Parramatta	n.c.	1.1	1.0	0.9	1.0	2.3	3.0	2.4	1.2	0.7	1.3	1.1	1.6	0.8	1.2	1.8	0.8
Penrith	n.c.	1.5	1.1	1.5	1.1	1.3	0.5	0.7	1.0	0.6	1.2	0.9	1.0	1.0	0.9	1.0	1.2
Pittwater	n.c.	0.5	0.5	0.6	0.5	0.3			0.4	0.6	0.4	0.8	0.4	0.7	0.5	0.7	0.7
Port Macquarie-Hastings	n.c.	1.0	1.2	1.1	1.0	0.5		0.6	0.8	1.4	0.7	1.0	0.7	1.4	0.5	0.6	1.0
Port Stephens	n.c.	0.8	0.9	1.4	1.5	0.2	0.6	0.1	1.3	1.4	1.3	1.1	0.6	1.3	0.3	0.5	1.3
Queanbeyan	n.c.	1.1	0.9	0.9	0.8	0.4		0.1	0.8	0.8	0.7	1.0	0.4	0.6	0.2	0.6	1.0
Randwick	n.c.	0.7	0.8	0.6	0.6	1.8	1.8	1.5	1.0	0.4	1.2	1.1	0.5	0.8	1.2	1.1	0.7
Richmond Valley	n.c.	1.6	1.4	2.1	1.6	0.5		0.8	1.8	2.7	1.7	1.2	0.7	2.0	0.6	0.4	1.6
Rockdale	n.c.	0.7	0.5	0.6	0.5	1.2	2.1	1.6	0.6	0.3	1.0	0.9	0.5	0.6	0.6	1.2	0.6
Ryde	n.c.	0.3	0.4	0.3	0.7	0.5	0.6	1.4	0.6	0.3	0.4	0.6	1.1	0.6	0.5	1.2	0.5
Shellharbour	n.c.	0.9	0.7	0.8	0.6	0.4	1.2	0.9	1.1	0.9	1.2	1.2	0.9	1.1	0.4	0.5	0.9
Shoalhaven	n.c.	1.4	1.4	1.3	1.1	0.8	0.2	0.8	1.6	1.9	1.2	1.1	0.9	1.3	0.4	0.5	1.3
Singleton	n.c.	0.7	0.8	1.0	1.2	0.3		0.4	1.0	1.8	0.9	1.1	0.7	1.4	0.2	0.6	0.9
Snowy River	n.c.	0.7	0.7	1.0	1.1			0.6	0.4	0.9	0.1	0.6	0.1	0.7	0.1	0.2	1.2
Strathfield	n.c.	0.9	0.9	0.4	0.8	3.1	3.3	2.2	1.0	0.4	1.4	1.6	0.5	0.7	1.8	2.3	0.7
Sutherland Shire	n.c.	0.6	0.6	0.6	0.6	0.4	0.1	0.3	0.4	0.4	0.5	0.5	0.7	0.4	0.5	0.6	0.8
Sydney	n.c.	1.3	4.1	1.7	1.9	6.5	2.4	4.4	1.2	1.9	1.5	2.3	4.4	1.8	13.6	4.5	1.7
Tamworth Regional	n.c.	1.7	1.8	1.7	2.1	1.0	0.7	0.6	1.9	1.8	0.9	1.0	1.7	1.6	0.4	0.6	1.7
Temora	n.c.	0.8	0.8	2.7	2.6				0.8	1.3	0.7	0.6	0.3	1.3		0.2	1.3
Tenterfield	n.c.	1.8	0.9	1.4	0.5				1.1	1.8	0.6	0.6	0.2	1.0	0.2	0.2	1.1
The Hills Shire	n.c.	0.4	0.3	0.6	0.5	0.4	0.8	0.4	0.5	0.3	0.4	0.5	0.7	0.4	0.3	0.8	0.6
Tumbarumba	n.c.	0.6	0.7	2.2	0.7				0.6	1.2	0.1	0.4	0.2	1.9		0.1	0.5
Turnut Shire	n.c.	1.1	1.0	1.5	2.2				0.5	1.1	0.5	0.7	0.9	1.6	0.4	0.3	1.0
Tweed	n.c.	0.7	0.7	1.6	0.8	0.4	1.6	0.7	0.9	1.1	0.9	1.0	0.8	1.0	0.4	0.5	0.7
Unincorporated Far West	n.c.																
Upper Hunter Shire	n.c.	0.7	0.7	0.5	1.3		1.4	0.7	0.6	2.2	0.4	0.5	0.1	0.9	0.1	0.3	1.0
Upper Lachlan Shire	n.c.	0.4	0.5	0.4	1.0				0.2	0.5	0.2	0.5	0.1	1.3		0.3	0.5
Uralla	n.c.	1.4	0.6	0.5	0.8				0.4	1.8	0.3	0.4	0.1	1.1	0.1	0.3	0.5
Urana	n.c.																
Wagga Wagga	n.c.	1.1	1.3	1.5	1.2	0.6		0.4	1.5	1.9	0.8	1.7	1.3	2.4	0.7	0.7	1.5
Wakool	n.c.	0.9	0.4	1.1	0.3				0.2	1.4	0.4	0.4		0.7		0.1	0.7
Walcha	n.c.	0.7	0.2	0.5	0.8				0.8	1.4	0.3	0.1	0.1	0.6	0.3	0.5	0.5
Walgett	n.c.	6.6	3.5	2.1	2.8	0.3	2.8	0.7	2.6	3.3	1.4	1.2	0.9	2.2	0.6	0.8	2.0
Warren	n.c.																
Warringham	n.c.	0.5	0.5	0.4	0.5	0.3	0.3	0.1	0.5	0.4	0.3	0.6	0.7	0.6	0.6	0.7	0.6
Warrumbungle Shire	n.c.	1.6	1.0	2.1	1.2	0.9		0.5	0.7	1.6	0.5	0.6	0.4	2.0	0.2	0.4	1.2
Waverley	n.c.	0.5	0.9	0.5	1.1	1.1	1.2	0.5	0.7	0.4	1.0	0.9	1.8	1.2	1.9	1.5	0.8
Weddin	n.c.	0.6	0.6	0.9	1.7				0.5	0.6	0.3	0.1		0.9		0.3	0.7
Wellington	n.c.	2.8	2.0	1.9	3.7	0.8		1.1	3.3	2.1	1.3	1.3	1.7	2.0	0.3	0.4	2.6
Wentworth	n.c.	2.5	1.2	0.7	1.8	0.3	2.8	0.7	2.4	3.9	2.5	1.6	0.8	2.4	0.4	0.5	1.5
Willoughby	n.c.	0.2	0.4	0.3	0.6	0.4	1.1	0.5	0.7	0.6	0.3	0.4	2.3	0.5	0.8	1.6	0.5
Wingecarribee	n.c.	0.6	0.6	0.7	1.0	0.3	0.4		0.5	1.9	0.6	0.5	0.5	1.1	0.1	0.4	1.1
Wollondilly	n.c.	0.9	0.5	1.4	0.7	0.1		0.1	0.5	0.6	0.6	0.7	0.1	0.7	0.0	0.5	0.7
Wollongong	n.c.	0.9	1.0	1.1	0.8	0.6	0.8	1.1	0.9	1.1	1.0	1.0	1.2	1.0	0.8	0.7	1.0
Woollahra	n.c.	0.3	0.5	0.5	0.6	0.7	0.4	0.7	0.8	0.7	0.8	0.8	0.5	1.1	1.3	0.8	0.6
Wyong	n.c.	1.3	1.1	1.6	1.4	0.6	0.9	0.6	1.2	1.2	1.3	1.4	1.1	1.1	0.8	0.8	1.3
Yass Valley	n.c.	0.5	0.5	0.8	0.9				0.2	0.4	0.3	0.3	0.2	0.9	0.1	0.3	0.6
Young	n.c.	1.4	1.4	1.3	2.4	0.4			0.7	2.0	0.5	0.8	0.5	1.3	0.3	0.6	2.3
NSW	1.0	1.0	1.0	1.0	1.0	1.0	1.0	1.0	1.0	1.0	1.0	1.0	1.0	1.0	1.0	1.0	1.0

* For further explanation of rate calculation populations and the ratio to NSW rate, see page 44, Note 3 and paragraph 8. A result of '.' indicates either that there were no relevant offences recorded in the LGA, or that the population is less than 3,000 people and no rate was calculated.

Sydney LGA can be considered a special case since the population used to calculate the rate is much lower than the population using the area for work and entertainment and this will be reflected in higher incident rates.

* Murder counts and rates at the LGA level are available from the BOCSAR Crime Mapping Tool (<http://crimetool.bocsar.nsw.gov.au/bocsar/>) and in various datasets on the BOCSAR website (<http://www.bocsar.nsw.gov.au/>)

TABLE 3.3C: NUMBER OF RECORDED CRIMINAL INCIDENTS FOR MAJOR OFFENCES, NSW LGAs, 2011

NSW LGAs 2011	Murder*	Assault - domestic violence related	Assault - non-domestic violence related	Sexual assault	Indecent assault, act of indecency and other sexual offences	Robbery without a weapon	Robbery with a firearm	Robbery with a weapon not a firearm	Break and enter dwelling	Break and enter non-dwelling	Motor vehicle theft	Steal from motor vehicle	Steal from retail store	Steal from dwelling	Steal from person	Fraud	Malicious damage to property
Albury	n.a.	233	341	60	46	11	3	5	407	171	157	656	243	297	36	188	1,125
Armidale Dumaresq	n.a.	146	187	36	32	1	0	2	163	47	22	108	110	67	25	63	371
Ashfield	n.a.	110	108	22	33	26	2	8	156	57	102	197	134	69	20	318	319
Auburn	n.a.	270	365	18	51	77	5	27	335	135	302	463	115	169	120	579	565
Ballina	n.a.	145	190	23	40	7	0	3	206	198	91	350	91	158	17	110	485
Balranald	n.a.	22	20	1	4	0	0	0	25	24	6	12	0	12	0	10	32
Bankstown	n.a.	768	729	67	89	75	28	68	892	260	821	1,519	512	350	118	1,730	1,611
Bathurst Regional	n.a.	215	282	38	59	16	0	7	267	133	109	321	165	147	43	134	730
Bega Valley	n.a.	119	163	13	26	1	0	0	85	95	28	143	33	83	9	52	406
Bellingen	n.a.	32	40	10	7	2	0	1	44	70	25	70	5	28	2	19	97
Berrigan	n.a.	20	17	1	2	0	0	0	32	27	7	16	3	23	2	9	82
Blacktown	n.a.	1,897	1,834	221	280	210	16	104	2,257	476	1,057	2,290	1,156	965	390	2,227	4,525
Bland	n.a.	24	28	7	2	1	0	0	21	19	2	21	3	15	0	10	65
Blayney	n.a.	17	30	9	6	0	0	0	25	19	13	23	4	21	2	15	79
Blue Mountains	n.a.	299	302	44	65	13	1	7	316	177	75	355	92	197	26	290	1,051
Bogan	n.a.	21	26	3	3	0	0	1	11	11	9	17	5	14	0	3	47
Bombala	n.a.	10	12	2	3	0	0	0	5	8	0	6	0	11	0	6	31
Boorowa	n.a.	3	6	3	4	0	0	0	7	3	0	5	0	9	0	5	16
Botany Bay	n.a.	131	194	16	29	38	4	13	182	52	166	312	245	91	148	464	562
Bourke	n.a.	134	89	6	9	1	0	1	99	28	35	67	18	46	6	17	130
Brewarrina	n.a.	51	57	5	9	1	0	0	54	50	14	39	2	24	3	3	64
Broken Hill	n.a.	197	210	18	26	3	0	2	190	88	23	153	36	104	15	84	463
Burwood	n.a.	87	130	13	31	27	2	10	171	62	98	259	284	52	74	442	312
Byron	n.a.	85	346	34	33	5	0	3	161	139	66	219	84	164	78	82	375
Cabonne	n.a.	39	38	11	6	0	0	0	19	37	10	35	3	33	1	10	84
Camden	n.a.	179	150	27	38	7	1	5	204	100	152	259	90	118	10	167	476
Campbelltown	n.a.	992	1,071	124	183	119	12	43	1,399	318	620	1,065	628	526	162	653	2,570
Canada Bay	n.a.	114	116	14	17	16	7	13	307	86	177	486	61	109	24	350	506
Canterbury	n.a.	441	399	40	69	88	19	61	600	110	457	793	222	224	96	764	990
Carrathool	n.a.	19	9	3	3	0	0	0	3	5	6	10	1	18	1	9	26
Central Darling	n.a.	98	59	4	4	0	0	0	31	18	9	9	1	13	0	3	69
Cessnock	n.a.	284	279	59	60	10	2	10	353	307	284	433	91	253	24	170	802
Clarence Valley	n.a.	168	279	43	48	3	1	4	295	275	135	343	120	199	17	118	706
Cobar	n.a.	40	55	5	1	0	1	0	30	20	12	28	14	44	1	13	150
Coffs Harbour	n.a.	333	439	48	71	19	7	17	351	298	199	511	242	239	47	196	1,052
Conargo	n.a.	0	0	0	1	0	0	0	2	0	3	4	0	1	0	0	2
Coolamon	n.a.	8	7	2	11	0	0	0	18	33	10	6	0	16	0	8	54
Cooma-Monaro	n.a.	55	66	7	14	1	0	0	43	24	8	38	14	36	3	28	165
Coonamble	n.a.	56	59	5	7	3	0	1	170	79	19	80	23	44	1	9	238
Cootamundra	n.a.	48	50	12	13	3	0	0	26	29	3	36	7	32	4	12	129
Corowa Shire	n.a.	30	30	7	7	0	0	0	40	52	21	59	11	52	1	18	170
Cowra	n.a.	68	146	12	24	3	0	0	64	38	23	75	13	56	6	46	324
Deniliquin	n.a.	38	50	10	10	2	0	1	61	37	8	38	9	49	0	16	182
Dubbo	n.a.	303	358	40	73	15	0	11	431	98	123	424	193	248	36	177	849
Dungog	n.a.	12	16	2	5	0	0	0	24	43	11	16	2	34	2	13	109
Eurobodalla	n.a.	144	184	31	38	2	0	2	261	156	63	338	131	161	6	82	522
Fairfield	n.a.	722	758	83	100	119	16	73	1,079	249	600	978	382	363	148	942	1,533
Forbes	n.a.	76	80	13	9	0	1	0	59	25	15	61	14	73	1	25	257
Gilgandra	n.a.	30	27	2	12	0	0	0	46	37	15	38	7	28	2	24	106
Glen Innes Severn	n.a.	30	58	10	14	0	0	0	62	33	9	57	12	54	1	24	124
Gloucester	n.a.	12	10	1	1	0	0	0	10	25	8	12	1	12	2	9	35
Gosford	n.a.	410	718	105	109	33	4	13	1,067	349	481	1,173	443	433	181	616	1,902
Goulburn Mulwaree	n.a.	138	141	28	32	5	0	1	95	82	33	101	64	92	8	150	440
Great Lakes	n.a.	196	202	26	36	4	2	7	201	111	64	221	84	159	11	112	531
Greater Hume Shire	n.a.	21	21	10	7	1	0	0	32	76	13	47	2	29	0	23	78
Greater Taree	n.a.	232	299	46	53	11	0	8	343	232	138	313	141	211	36	186	787
Griffith	n.a.	186	218	8	19	7	1	10	186	86	62	226	121	87	13	67	457
Gundagai	n.a.	13	14	1	4	0	0	0	7	7	4	10	0	8	0	25	41
Gunnedah	n.a.	87	96	13	15	0	0	1	105	87	37	186	39	73	0	29	251
Guyra	n.a.	28	33	0	2	0	0	0	22	18	3	4	2	20	2	4	63
Gwydir	n.a.	14	19	6	3	0	0	0	12	5	4	5	2	18	1	5	33
Harden	n.a.	6	10	3	1	1	0	0	10	5	3	12	0	6	0	10	28
Hawkesbury	n.a.	232	326	53	60	14	4	15	233	153	174	421	145	180	37	271	883
Hay	n.a.	21	18	5	5	0	0	0	26	8	3	19	4	10	0	18	46
Holroyd	n.a.	445	374	47	76	59	7	46	773	160	370	612	104	233	70	627	868
Hornsby	n.a.	223	312	48	72	21	5	11	404	157	132	434	329	186	77	505	982
Hunters Hill	n.a.	16	22	1	6	1	0	2	39	11	26	66	6	26	2	23	100
Hurstville	n.a.	236	273	18	44	44	11	15	319	137	177	449	311	143	112	495	694
Inverell	n.a.	99	123	24	27	1	1	1	76	61	14	70	60	72	3	34	320
Jerilderie	n.a.	1	3	2	1	0	0	0	7	4	4	2	3	6	0	3	17
Junee	n.a.	16	24	10	2	0	0	0	33	17	11	20	4	31	2	8	81
Kempsey	n.a.	184	194	39	34	8	2	9	473	198	170	225	50	203	26	76	599
Kiama	n.a.	33	51	5	14	4	1	0	79	43	45	92	11	31	6	50	119
Kogarah	n.a.	117	109	10	35	20	0	16	213	44	79	226	25	81	14	217	393
Ku-ring-gai	n.a.	60	122	10	41	13	2	2	508	103	46	293	48	164	27	349	515
Kyogle	n.a.	43	51	8	12	0	0	0	53	70	42	58	9	37	4	22	133
Lachlan	n.a.	51	54	8	15	1	0	0	69	55	19	58	10	41	2	34	126
Lake Macquarie	n.a.	628	816	154	166	49	6	24	970	728	804	1,609	617	583	103	823	2,916
Lane Cove	n.a.	45	34	7	13	1	2	3	90	43	22	122	14	43	14	112	185
Leeton	n.a.	77	89	20	28	2	0	2	135	79	34	65	23	58	4	16	173

TABLE 3.3C: NUMBER OF RECORDED CRIMINAL INCIDENTS FOR MAJOR OFFENCES, NSW LGAs, 2011

NSW LGAs 2011	Murder*	Assault - domestic violence related	Assault - non-domestic violence related	Sexual assault	Indecent assault, act of indecency and other sexual offences	Robbery without a weapon	Robbery with a firearm	Robbery with a weapon not a firearm	Break and enter dwelling	Break and enter non-dwelling	Motor vehicle theft	Steal from motor vehicle	Steal from retail store	Steal from dwelling	Steal from person	Fraud	Malicious damage to property
Leichhardt	n.a.	167	212	15	37	24	1	14	223	76	230	361	134	141	35	294	550
Lismore	n.a.	206	327	48	61	13	1	5	300	170	125	260	212	158	29	159	604
Lithgow	n.a.	106	136	11	23	4	0	3	146	72	36	110	52	120	10	39	482
Liverpool	n.a.	831	862	104	150	127	14	70	1,264	283	741	1,453	740	412	140	1,106	1,999
Liverpool Plains	n.a.	41	40	7	11	2	0	0	44	24	10	21	2	33	3	14	66
Lockhart	n.a.	5	7	4	2	0	0	0	9	19	4	4	2	12	0	3	24
Lord Howe Island	n.a.	1	0	0	0	0	0	0	0	0	0	0	0	0	0	2	0
Maitland	n.a.	294	364	60	90	17	0	11	398	265	203	725	222	323	63	421	1,297
Manly	n.a.	94	260	12	25	8	1	3	134	32	38	222	106	155	99	124	370
Marrickville	n.a.	291	356	31	59	51	10	26	360	106	356	612	160	215	120	534	926
Mid-Western Regional	n.a.	108	191	22	15	4	0	1	124	84	24	133	44	85	6	44	482
Moree Plains	n.a.	191	200	12	22	10	0	0	320	146	121	270	69	108	21	62	451
Mosman	n.a.	36	42	4	16	5	0	1	89	20	26	152	33	51	9	67	183
Murray	n.a.	17	8	5	2	0	0	0	29	23	8	57	6	21	2	14	41
Murrumbidgee	n.a.	24	11	0	2	0	0	0	11	4	2	6	0	9	0	1	35
Muswellbrook	n.a.	75	91	7	12	0	0	2	150	65	50	225	31	76	6	36	360
Nambucca	n.a.	86	113	5	8	3	0	3	100	123	74	123	37	65	11	34	247
Narrabri	n.a.	43	82	11	15	1	1	0	97	54	32	100	26	65	3	46	243
Narrandera	n.a.	36	46	5	6	0	0	0	57	17	9	36	16	22	0	16	124
Narromine	n.a.	57	48	5	16	4	0	3	88	37	31	97	14	38	2	13	155
Newcastle	n.a.	627	1,258	118	159	90	13	40	1,347	592	753	2,212	621	665	282	1,044	3,116
North Sydney	n.a.	115	236	21	30	18	3	8	229	143	73	246	114	107	87	390	456
Oberon	n.a.	18	18	5	5	1	0	0	12	6	9	14	0	9	1	16	66
Orange	n.a.	267	390	39	41	9	2	12	619	162	230	527	276	172	37	147	798
Palerang	n.a.	38	32	9	1	1	0	1	14	20	7	19	3	28	1	16	63
Parkes	n.a.	119	113	17	20	3	0	2	102	50	26	78	32	73	0	59	388
Parramatta	n.a.	691	927	89	135	167	26	86	1,168	267	592	1,211	786	388	236	1,529	1,730
Penrith	n.a.	1,007	1,089	164	167	98	5	25	1,053	242	629	1,138	550	531	190	978	2,575
Pittwater	n.a.	109	162	22	26	7	0	0	124	80	63	322	69	116	35	215	468
Port Macquarie-Hastings	n.a.	275	467	50	59	17	0	9	315	258	143	492	156	301	48	217	891
Port Stephens	n.a.	196	321	55	84	7	2	2	490	231	230	519	122	256	23	178	1,059
Queanbeyan	n.a.	162	181	21	28	7	0	1	191	80	77	271	53	77	9	134	521
Randwick	n.a.	348	562	51	65	101	12	41	747	133	420	933	194	316	182	745	1,191
Richmond Valley	n.a.	140	169	29	29	5	0	4	232	149	106	186	46	135	16	44	440
Rockdale	n.a.	252	287	34	43	51	11	34	341	84	281	607	142	169	67	625	796
Ryde	n.a.	128	193	17	63	23	3	31	360	83	116	454	336	174	65	644	636
Shellharbour	n.a.	235	260	34	35	12	4	13	410	146	218	522	165	213	32	177	752
Shoalhaven	n.a.	493	693	75	88	32	1	16	821	439	315	689	244	370	46	234	1,466
Singleton	n.a.	67	102	14	24	3	0	2	129	102	60	181	48	96	5	72	258
Snowy River	n.a.	20	28	5	7	0	0	1	17	17	3	30	2	17	1	10	121
Strathfield	n.a.	124	163	9	23	48	6	17	210	33	138	381	56	78	76	436	293
Sutherland Shire	n.a.	488	727	73	110	40	1	12	445	203	314	775	464	274	127	707	2,116
Sydney	n.a.	877	3,805	187	284	488	22	167	1,229	811	720	2,745	2,285	940	2,905	4,093	3,691
Tamworth Regional	n.a.	366	551	59	101	24	2	7	604	254	137	390	282	268	27	186	1,208
Temora	n.a.	18	27	10	13	0	0	0	27	19	11	24	6	24	0	6	98
Tenterfield	n.a.	46	34	6	3	0	0	0	44	30	11	26	5	20	2	8	94
The Hills Shire	n.a.	259	291	65	75	32	7	13	490	141	188	620	358	192	69	701	1,238
Tumbarumba	n.a.	8	13	5	2	0	0	0	13	11	1	9	2	21	0	2	21
Tumut Shire	n.a.	46	60	10	20	0	0	0	31	29	14	56	31	53	5	17	143
Tweed	n.a.	249	339	85	60	14	7	13	428	241	211	580	204	252	45	231	797
Unincorporated Far West	n.a.	0	0	0	0	0	0	0	0	2	0	2	1	1	0	1	0
Upper Hunter Shire	n.a.	36	50	4	15	0	1	2	43	75	15	50	6	38	2	20	174
Upper Lachlan Shire	n.a.	12	18	2	6	0	0	0	8	9	5	23	2	28	0	11	48
Uralla	n.a.	33	18	2	4	0	0	0	14	27	5	17	1	19	1	11	40
Urana	n.a.	7	4	1	0	0	0	0	6	7	0	6	0	5	0	3	6
Wagga Wagga	n.a.	257	435	57	61	16	0	5	536	285	145	733	241	434	55	218	1,136
Wakool	n.a.	15	9	3	1	0	0	0	5	14	5	12	0	9	0	2	38
Walcha	n.a.	8	3	1	2	0	0	0	15	11	3	3	1	6	1	8	21
Walgett	n.a.	177	131	9	16	1	1	1	104	56	27	59	19	45	5	28	174
Warren	n.a.	50	69	9	8	0	0	1	33	22	5	33	9	17	0	4	70
Warringham	n.a.	287	346	35	62	21	2	4	397	147	122	631	278	244	108	505	991
Warrumbungle Shire	n.a.	60	53	13	10	4	0	1	40	40	13	44	13	60	2	22	154
Waverley	n.a.	136	319	19	60	31	4	7	279	62	183	395	362	242	155	522	635
Weddin	n.a.	8	11	2	5	0	0	0	10	5	3	2	0	10	0	6	33
Wellington	n.a.	91	89	10	26	3	0	2	159	43	30	77	44	51	3	16	274
Wentworth	n.a.	66	44	3	10	1	1	1	94	66	48	77	17	50	3	17	126
Willoughby	n.a.	63	156	14	36	11	4	7	264	91	54	190	469	109	69	567	420
Wingecarribee	n.a.	113	146	20	36	6	1	0	120	213	82	157	65	150	4	91	608
Wollondilly	n.a.	143	107	38	25	2	0	1	122	59	76	194	18	91	1	120	388
Wollongong	n.a.	646	1,070	133	134	54	8	45	1,003	525	571	1,421	713	589	202	759	2,518
Woollahra	n.a.	66	152	16	27	16	1	8	249	91	127	314	80	176	88	230	428
Wyong	n.a.	705	880	147	165	35	7	20	981	414	538	1,396	458	492	136	648	2,320
Yass Valley	n.a.	29	39	7	11	0	0	0	13	13	14	34	7	39	2	22	104
Young	n.a.	69	96	10	25	2	0	0	48	62	18	70	20	49	4	39	363
Prisons	n.a.	1	662	8	9	1	0	0	0	7	1	3	0	0	0	5	120
NSW	89	26,808	37,066	4,309	5,786	3,000	361	1,493	39,407	17,032	19,548	48,159	20,685	20,813	8,504	36,421	86,852

* LGA murder counts are in the Crime Mapping Tool (<http://crimetool.bocsar.nsw.gov.au/bocsar/>) and elsewhere on the BOCSAR website (www.bocsar.nsw.gov.au/)

TABLE 3.3D: NUMBER OF RECORDED CRIMINAL INCIDENTS FOR MAJOR OFFENCES, NSW LGAs, 2010

NSW LGAs 2010	Murder*	Assault - domestic violence related	Assault - non-domestic violence related	Sexual assault	Indecent assault, act of indecency and other sexual offences	Robbery without a weapon	Robbery with a firearm	Robbery with a weapon not a firearm	Break and enter dwelling	Break and enter non-dwelling	Motor vehicle theft	Steal from motor vehicle	Steal from retail store	Steal from dwelling	Steal from person	Fraud	Malicious damage to property
Albury	n.a.	216	421	58	47	17	0	10	577	326	182	640	224	297	56	176	1,252
Armidale Dumaresq	n.a.	123	192	27	20	5	0	1	254	69	41	177	95	104	15	103	462
Ashfield	n.a.	100	129	20	23	41	2	17	190	38	110	290	97	76	29	294	325
Auburn	n.a.	298	396	30	41	104	14	69	438	148	386	512	111	127	112	556	643
Ballina	n.a.	127	191	33	44	9	0	3	175	127	60	190	88	146	6	119	454
Balranald	n.a.	19	15	4	4	0	0	0	14	22	3	7	3	15	0	9	27
Bankstown	n.a.	672	750	64	81	86	32	68	936	289	851	1,006	312	303	103	1,611	1,878
Bathurst Regional	n.a.	194	319	40	25	11	0	1	295	124	96	379	103	166	35	157	694
Bega Valley	n.a.	102	154	21	17	3	0	1	125	99	34	109	61	110	14	52	389
Bellingen	n.a.	32	50	6	4	2	0	1	30	40	17	63	12	34	0	14	148
Berrigan	n.a.	20	15	2	7	1	0	0	25	36	14	21	0	28	2	15	71
Blacktown	n.a.	1,792	1,869	232	272	272	12	103	2,250	483	1,172	2,182	1,069	876	345	2,263	5,029
Bland	n.a.	18	23	5	2	1	0	0	22	21	12	38	2	26	0	11	54
Blayney	n.a.	13	27	7	2	0	0	0	20	22	7	27	5	26	1	10	71
Blue Mountains	n.a.	260	332	51	62	21	1	8	258	132	111	402	107	196	36	160	1,343
Bogan	n.a.	25	24	5	2	0	0	0	10	9	7	19	3	7	1	6	42
Bombala	n.a.	16	12	3	3	0	0	0	6	10	1	12	0	8	0	3	33
Boorowa	n.a.	8	3	0	1	0	0	0	7	4	4	6	1	4	0	4	9
Botany Bay	n.a.	134	203	18	34	24	2	9	161	65	188	284	429	86	144	508	516
Bourke	n.a.	114	93	11	13	1	0	0	56	35	23	40	21	45	3	13	158
Brewarrina	n.a.	58	41	9	4	0	0	0	60	30	9	42	2	22	0	4	78
Broken Hill	n.a.	167	177	22	9	6	0	0	238	66	35	111	49	110	9	58	440
Burwood	n.a.	103	144	12	22	31	7	28	235	63	107	218	237	56	67	518	341
Byron	n.a.	99	304	26	28	9	1	0	124	167	44	211	74	172	68	101	426
Cabonne	n.a.	36	45	10	7	0	0	1	41	36	14	32	10	34	2	19	102
Camden	n.a.	180	169	22	32	12	2	3	240	97	185	372	87	134	16	148	567
Campbelltown	n.a.	1,043	1,194	134	137	126	8	73	1,355	319	684	939	563	532	155	622	2,867
Canada Bay	n.a.	102	150	11	19	23	5	10	288	82	240	498	62	114	34	417	497
Canterbury	n.a.	438	481	43	56	118	20	73	752	135	561	731	221	209	102	789	1,124
Carrathool	n.a.	26	36	1	3	0	0	0	9	11	3	19	5	14	0	8	31
Central Darling	n.a.	109	36	5	5	0	0	0	31	12	9	17	3	14	1	7	62
Cessnock	n.a.	257	338	59	47	11	1	4	260	274	204	278	95	221	23	161	800
Clarence Valley	n.a.	159	219	49	52	3	1	2	275	180	118	306	134	231	21	110	632
Cobar	n.a.	31	53	19	7	1	0	0	31	19	8	22	10	28	0	14	113
Coffs Harbour	n.a.	333	459	61	66	17	1	6	409	282	227	687	225	276	61	158	1,125
Conargo	n.a.	1	2	0	0	0	0	0	0	2	1	2	0	1	0	2	1
Coolamon	n.a.	8	15	3	7	1	0	0	19	27	13	7	1	17	0	2	37
Cooma-Monaro	n.a.	20	58	5	10	0	0	3	30	23	12	40	27	34	6	18	169
Coonamble	n.a.	45	55	7	9	1	0	0	117	51	13	53	18	40	2	10	152
Cootamundra	n.a.	45	49	11	8	0	0	0	33	33	5	21	16	43	5	12	83
Corowa Shire	n.a.	37	34	4	3	1	0	0	35	37	5	38	11	59	2	6	140
Cowra	n.a.	91	139	16	17	2	0	1	114	63	24	132	28	75	3	24	325
Deniliquin	n.a.	53	48	3	8	0	0	0	62	21	9	26	12	51	0	20	183
Dubbo	n.a.	319	395	41	60	18	1	4	453	107	146	447	195	199	33	150	901
Dungog	n.a.	11	20	7	6	0	0	0	27	32	16	31	4	22	4	8	78
Eurobodalla	n.a.	131	210	30	26	6	0	3	196	102	66	311	152	98	20	85	475
Fairfield	n.a.	737	738	75	133	120	29	55	1,247	232	708	959	341	292	149	991	1,554
Forbes	n.a.	83	92	3	7	1	0	2	68	40	20	156	10	78	0	83	267
Gilgandra	n.a.	32	56	4	3	2	0	1	53	20	6	27	6	23	2	10	84
Glen Innes Severn	n.a.	38	50	6	13	0	0	0	60	68	18	67	13	51	2	59	162
Gloucester	n.a.	18	26	4	8	1	0	0	26	7	3	6	0	6	2	8	46
Gosford	n.a.	519	771	122	105	37	0	18	1,097	515	444	1,049	600	456	202	538	2,103
Goulburn Mulwaree	n.a.	132	205	26	26	3	0	3	103	82	48	122	80	131	12	137	570
Great Lakes	n.a.	211	202	31	32	7	0	1	182	74	66	109	76	197	11	175	489
Greater Hume Shire	n.a.	17	27	3	3	0	0	0	26	48	6	32	6	37	0	18	69
Greater Taree	n.a.	234	292	47	46	7	2	7	666	267	152	249	205	214	37	151	723
Griffith	n.a.	145	240	20	44	8	0	4	296	71	109	219	100	95	14	70	527
Gundagai	n.a.	19	15	0	1	0	0	0	6	7	4	7	1	8	1	43	26
Gunnedah	n.a.	70	102	14	13	4	0	0	99	51	31	140	31	72	4	25	292
Guyra	n.a.	19	19	3	6	0	0	0	16	11	4	11	0	21	4	15	44
Gwydir	n.a.	10	17	5	3	0	1	0	10	9	5	10	5	24	0	5	29
Harden	n.a.	11	15	2	3	0	0	1	11	5	2	9	2	8	1	8	35
Hawkesbury	n.a.	241	364	40	49	27	4	11	220	127	203	445	131	153	23	240	763
Hay	n.a.	10	18	2	0	0	0	0	7	7	4	5	4	10	0	12	28
Holroyd	n.a.	451	437	53	65	81	10	36	841	165	406	577	119	210	64	640	1,019
Hornsby	n.a.	212	327	46	67	25	4	10	396	112	125	469	314	197	64	435	1,036
Hunters Hill	n.a.	19	20	4	5	4	0	3	42	11	19	57	7	27	3	33	124
Hurstville	n.a.	228	304	29	47	81	5	20	309	137	244	409	401	126	98	491	777
Inverell	n.a.	129	169	19	10	1	1	0	69	39	14	106	68	93	2	38	299
Jerilderie	n.a.	2	1	3	0	0	0	0	5	3	1	5	0	2	0	5	11
Junee	n.a.	20	31	2	3	0	0	0	23	18	7	12	2	27	0	6	67
Kempsey	n.a.	208	235	34	35	9	3	5	387	115	145	188	65	191	19	87	612
Kiama	n.a.	22	61	10	16	1	0	0	93	43	24	108	23	34	13	29	149
Kogarah	n.a.	128	122	9	12	26	3	9	174	51	117	231	32	78	20	238	509
Ku-ring-gai	n.a.	71	107	30	39	2	3	2	493	79	58	329	66	179	18	269	622
Kyogle	n.a.	59	86	9	10	2	0	0	46	44	23	30	7	43	2	15	169
Lachlan	n.a.	51	60	2	7	0	0	0	88	100	19	46	9	39	1	18	140
Lake Macquarie	n.a.	644	867	136	129	30	6	18	780	715	710	1,156	518	601	90	839	2,756
Lane Cove	n.a.	21	39	7	8	2	1	2	105	39	37	148	19	43	9	106	146
Leeton	n.a.	53	84	16	12	0	0	1	93	78	28	64	14	57	5	8	209

TABLE 3.3D: NUMBER OF RECORDED CRIMINAL INCIDENTS FOR MAJOR OFFENCES, NSW LGAs, 2010

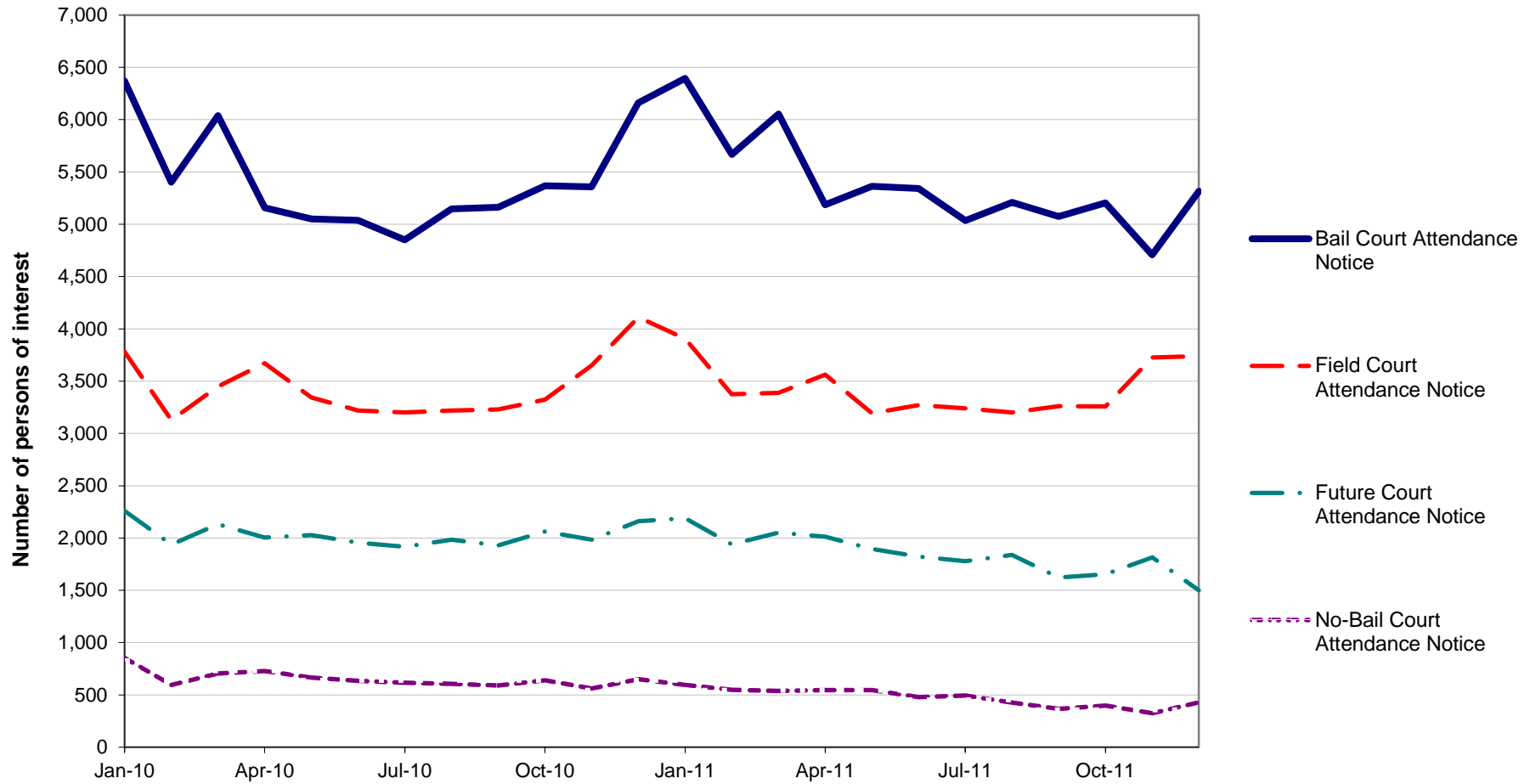
NSW LGAs 2010	Murder*	Assault - domestic violence related	Assault - non-domestic violence related	Sexual assault	Indecent assault, act of indecency and other sexual offences	Robbery without a weapon	Robbery with a firearm	Robbery with a weapon not a firearm	Break and enter dwelling	Break and enter non-dwelling	Motor vehicle theft	Steal from motor vehicle	Steal from retail store	Steal from dwelling	Steal from person	Fraud	Malicious damage to property
Leichhardt	n.a.	119	229	13	24	16	14	11	276	77	202	520	122	160	53	329	660
Lismore	n.a.	206	384	46	52	19	2	4	266	137	104	252	203	172	37	118	603
Lithgow	n.a.	86	174	15	13	6	1	1	126	60	61	109	43	108	12	64	467
Liverpool	n.a.	797	905	114	147	140	18	75	1,171	273	672	1,016	695	319	171	926	2,155
Liverpool Plains	n.a.	36	59	3	4	1	1	0	27	55	5	11	8	27	0	11	73
Lockhart	n.a.	3	4	3	1	0	0	0	13	6	1	2	2	6	0	4	30
Lord Howe Island	n.a.	0	2	0	0	0	0	0	0	0	0	0	0	0	0	0	2
Maitland	n.a.	287	443	51	61	19	4	9	405	255	212	668	256	311	49	330	1,246
Manly	n.a.	71	260	18	21	20	1	2	130	51	45	234	123	130	94	167	513
Marrickville	n.a.	272	348	38	55	62	25	31	513	122	310	821	194	311	117	513	951
Mid-Western Regional	n.a.	118	180	25	19	7	0	2	113	66	31	94	63	105	5	48	399
Moree Plains	n.a.	184	206	29	33	14	0	4	312	186	91	172	74	95	13	59	424
Mosman	n.a.	35	44	5	17	4	2	1	90	26	21	122	33	59	15	52	207
Murray	n.a.	9	16	6	4	0	0	0	29	20	7	27	3	28	2	9	46
Murrumbidgee	n.a.	15	16	3	2	0	0	0	6	13	6	10	0	13	0	7	39
Muswellbrook	n.a.	78	111	17	22	7	0	1	151	139	46	101	40	70	12	35	391
Nambucca	n.a.	100	165	49	25	6	0	2	107	100	57	111	20	90	6	41	286
Narrabri	n.a.	70	97	15	10	2	0	0	98	51	32	83	26	67	1	36	232
Narrandera	n.a.	34	52	7	8	1	0	0	41	28	8	49	14	31	2	23	150
Narromine	n.a.	44	63	7	15	0	0	1	96	52	29	90	16	44	5	12	156
Newcastle	n.a.	572	1,439	107	121	109	16	39	1,269	562	752	1,872	685	643	293	1,005	3,183
North Sydney	n.a.	103	241	10	25	20	4	10	313	107	70	293	126	124	87	325	485
Oberon	n.a.	14	22	5	4	0	0	0	22	9	8	13	7	10	0	23	66
Orange	n.a.	220	339	55	33	16	1	9	476	147	149	480	275	195	34	149	882
Palerang	n.a.	28	25	12	6	0	0	0	40	28	29	18	0	28	0	15	67
Parkes	n.a.	91	119	15	18	3	0	1	100	53	26	111	32	86	2	48	349
Parramatta	n.a.	621	992	82	148	166	28	81	1,292	258	616	1,027	741	435	291	1,643	1,673
Penrith	n.a.	940	1,278	168	163	97	8	46	1,057	267	764	1,392	608	562	192	987	2,803
Pittwater	n.a.	81	200	21	22	10	0	3	143	78	73	311	89	105	39	131	514
Port Macquarie-Hastings	n.a.	331	501	50	53	18	1	9	467	224	155	491	226	346	48	220	1,001
Port Stephens	n.a.	233	340	53	59	8	2	4	565	198	215	520	135	268	24	204	951
Queanbeyan	n.a.	136	161	24	31	9	1	1	264	86	100	346	92	101	15	132	436
Randwick	n.a.	312	574	51	61	88	4	22	773	105	374	728	189	265	142	764	1,184
Richmond Valley	n.a.	113	184	31	26	1	1	3	263	118	70	144	36	93	6	71	368
Rockdale	n.a.	275	343	22	60	79	6	40	335	119	294	500	115	111	71	593	858
Ryde	n.a.	127	198	31	51	34	5	7	311	103	153	458	372	153	41	546	644
Shellharbour	n.a.	219	309	43	41	13	0	5	365	153	211	450	145	168	32	187	847
Shoalhaven	n.a.	516	623	73	89	30	3	9	826	387	266	602	284	362	55	176	1,511
Singleton	n.a.	59	105	14	17	4	1	1	140	129	106	113	30	120	10	52	338
Snowy River	n.a.	18	29	7	5	1	0	0	15	14	0	30	4	24	8	41	92
Strathfield	n.a.	110	191	16	23	70	8	25	328	58	174	331	78	73	80	511	339
Sutherland Shire	n.a.	501	798	65	104	48	6	26	651	195	349	907	319	356	140	766	2,562
Sydney	n.a.	911	4,063	191	330	552	30	173	1,286	930	692	2,797	1,969	1,057	3,127	4,622	3,609
Tamworth Regional	n.a.	371	524	59	82	24	0	6	602	263	162	310	196	249	32	158	1,153
Temora	n.a.	20	30	8	9	0	0	2	28	28	3	27	3	37	0	8	87
Tenterfield	n.a.	28	49	3	4	0	0	1	105	53	17	45	13	41	0	11	112
The Hills Shire	n.a.	289	331	56	35	36	8	15	517	213	164	501	376	217	55	639	1,088
Tumbarumba	n.a.	8	12	0	3	0	0	0	14	12	6	22	1	16	0	4	34
Tumut Shire	n.a.	39	78	6	16	1	0	0	38	19	6	40	17	48	2	18	195
Tweed	n.a.	270	336	56	59	18	5	9	524	307	220	702	250	301	39	226	1,008
Unincorporated Far West	n.a.	1	2	0	0	0	0	0	1	0	0	0	0	2	0	0	0
Upper Hunter Shire	n.a.	35	52	10	11	0	0	0	51	78	31	52	8	36	1	22	167
Upper Lachlan Shire	n.a.	8	12	2	6	0	0	0	19	20	3	13	1	17	1	10	85
Uralla	n.a.	14	18	1	11	0	0	0	14	24	5	9	1	13	1	11	41
Urana	n.a.	7	7	0	2	0	0	0	3	5	1	4	0	4	0	1	9
Wagga Wagga	n.a.	236	466	53	60	10	0	8	521	276	193	622	256	443	35	145	1,149
Wakool	n.a.	9	16	3	4	0	0	0	8	14	5	6	1	7	0	1	30
Walcha	n.a.	7	10	4	1	0	0	0	11	13	3	10	2	10	0	3	34
Walgett	n.a.	214	138	11	8	0	0	0	131	82	26	80	20	63	6	26	228
Warren	n.a.	35	52	6	3	1	0	0	27	12	4	17	7	19	1	3	79
Warringham	n.a.	239	431	38	66	50	2	9	429	151	194	582	336	282	86	480	1,138
Warrumbungle Shire	n.a.	50	73	12	11	1	0	0	54	44	10	40	18	38	1	15	153
Waverley	n.a.	142	433	21	44	24	1	6	383	67	211	376	388	217	202	667	749
Weddin	n.a.	7	10	3	3	0	0	0	12	7	4	5	0	7	1	5	36
Wellington	n.a.	70	93	12	13	0	0	1	170	46	36	92	33	66	8	22	363
Wentworth	n.a.	74	38	9	12	1	0	2	90	88	40	86	17	39	12	14	167
Willoughby	n.a.	60	162	12	29	21	6	5	368	102	83	284	466	106	82	484	402
Wingecarribee	n.a.	108	187	27	22	7	0	0	138	160	41	151	59	117	14	107	699
Wollondilly	n.a.	154	117	17	19	10	2	0	119	66	91	112	15	87	6	166	444
Wollongong	n.a.	622	1,019	137	177	80	6	37	1,113	469	554	986	659	539	195	630	2,676
Woollahra	n.a.	84	186	13	38	16	2	5	251	36	117	350	108	170	102	298	463
Wyong	n.a.	704	985	177	152	54	3	11	749	528	524	1,193	453	475	128	598	2,610
Yass Valley	n.a.	26	39	10	10	0	0	0	22	29	13	23	24	35	2	46	115
Young	n.a.	67	99	26	14	0	0	0	42	48	21	65	32	63	4	48	334
Prisons	n.a.	3	726	13	15	1	0	1	0	4	2	0	0	0	2	5	126
NSW	79	26,145	39,851	4,478	5,274	3,520	410	1,487	41,245	17,069	20,263	44,783	20,511	20,904	8,757	36,266	91,569

* LGA murder counts are in the Crime Mapping Tool (<http://crimetool.bocsar.nsw.gov.au/bocsar/>) and elsewhere on the BOCSAR website (www.bocsar.nsw.gov.au/)

SECTION 4:

**METHODS OF PROCEEDINGS
AGAINST ALLEGED OFFENDERS
2009, 2010 AND 2011**

Figure 4.1: TRENDS IN REFERRAL METHODS FOR ALLEGED OFFENDERS PROCEEDED AGAINST TO COURT, NSW, JANUARY 2010 TO DECEMBER 2011



Trends: Future Court Attendance Notice shows a statistically significant downward trend for the 24 month period (down by 9.2%).
 No-Bail Court Attendance Notice shows a statistically significant downward trend for the 24 month period (down by 27.4%)

* Due to the time lag between the incident being recorded and the Future Court Attendance Notice being issued some upwards revision of data for the last three months of 2011 is expected.

**TABLE 4.1: NUMBER OF ALLEGED OFFENDERS RECORDED BY NSW POLICE FORCE BY METHOD OF LEGAL PROCEEDINGS
NSW, JANUARY 2009 - DECEMBER 2011**

<i>Type of process</i>	<i>Number of alleged offenders</i>			<i>Trend[^]</i>	
	<i>Jan-Dec 2009</i>	<i>Jan-Dec 2010</i>	<i>Jan-Dec 2011</i>	<i>Annual percentage change Jan 2010 - Dec 2011</i>	<i>Average annual percentage change Jan 2009 - 2011</i>
Proceeded against to court:					
Bail Court Attendance Notice	66,856	65,108	64,553	Stable	Stable
No-Bail Court Attendance Notice	10,261	7,847	5,694	-27.4%	-25.5%
Future Court Attendance Notice	26,026	24,358	22,122	-9.2%	-7.8%
Field Court Attendance Notice	47,099	41,328	41,125	Stable	-6.6%
All proceedings to court	150,242	138,641	133,494	-3.7%	-5.7%
Proceeded against other than to court:					
Youth Justice Conference	2,024	1,857	1,546	Stable	-12.6%
Caution Young Offenders Act	11,308	11,020	9,719	-11.8%	-7.3%
Cannabis/other drug caution	4,076	4,706	5,213	Stable	13.1%
Criminal Infringement Notice	10,049	11,862	11,582	Stable	7.4%
Infringement Notice/ Public Safety Infringement Notice	538,713	628,363	593,011	Stable	4.9%
Warnings*	n.a.	4,553	7,003	53.8%	n.a.
All proceedings other than to court	566,170	657,808	621,071	Stable	n.a.
All proceedings	716,412	796,449	754,565	Stable	n.a.

[^] For further explanation of **trend results**, see page 44, paragraphs 5 and 6.

NOTE: *Data on warnings is only available from January 2010 onwards. Due to changes in how warnings are recorded, this data series can not be compared with warning data previously published.

NOTE: n. a. refers to data not available or trend result not available because of missing warnings data.

SECTION 5:

**CLEARED CRIMINAL INCIDENTS
AND WHETHER LEGAL PROCEEDINGS
COMMENCED FOR SELECTED OFFENCES
JANUARY 2009 TO SEPTEMBER 2011**

TABLE 5.1: NUMBER OF RECORDED CRIMINAL INCIDENTS FOR SELECTED OFFENCES BY CLEAR UP STATUS AND WHETHER LEGAL PROCEEDINGS COMMENCED, NSW, JANUARY TO DECEMBER 2009

<i>Type of offence</i>	<i>Recorded criminal incidents</i>						
	<i>Total number recorded</i>	<i>Cleared within 30 days of reporting</i>			<i>Cleared within 90 days of reporting</i>		
		<i>Total number cleared[#]</i>	<i>Proceedings commenced within 30 days^{##}</i>	<i>% proceedings commenced within 30 days</i>	<i>Total number cleared[#]</i>	<i>Proceedings commenced within 90 days^{##}</i>	<i>% proceedings commenced within 90 days</i>
Murder*	n.a.	n.a.	n.a.	n.a.	n.a.	n.a.	n.a.
Assault - domestic violence related	26,223	21,146	14,768	56.3	22,491	15,563	59.3
Assault - non-domestic violence related	40,631	18,088	9,021	22.2	20,709	10,676	26.3
Sexual assault	4,418	728	334	7.6	1,024	439	9.9
Indecent assault, act of indecency	3,792	932	485	12.8	1,273	660	17.4
Other sexual offences	1,540	462	248	16.1	534	281	18.2
Abduction and kidnapping	329	87	67	20.4	104	82	24.9
Robbery without a weapon	3,774	714	624	16.5	835	731	19.4
Robbery with a firearm	464	68	63	13.6	96	88	19.0
Robbery with a weapon not a firearm	1,671	330	307	18.4	396	364	21.8
Harassment, threatening behaviour and private nuisance	28,346	15,389	5,911	20.9	16,754	6,516	23.0
Break and enter dwelling	41,603	2,069	1,584	3.8	2,614	2,000	4.8
Break and enter non-dwelling	19,231	1,060	897	4.7	1,365	1,147	6.0
Motor vehicle theft	22,328	1,020	836	3.7	1,285	1,035	4.6
Steal from motor vehicle	47,043	1,098	817	1.7	1,320	991	2.1
Steal from retail store	20,641	11,169	8,836	42.8	11,882	9,450	45.8
Steal from dwelling	21,313	1,601	507	2.4	1,883	626	2.9
Steal from person	9,869	557	354	3.6	647	408	4.1
Stock theft	513	23	1	0.2	33	7	1.4
Fraud	35,484	3,452	2,149	6.1	4,823	3,082	8.7
Arson	7,244	394	168	2.3	470	230	3.2
Malicious damage to property	101,633	17,526	10,923	10.7	19,246	12,126	11.9

[#] Total number cleared includes both incidents where proceedings were commenced and those where no proceedings were commenced.

^{##} This includes incidents where a person was either proceeded against to court or proceeded against other than to court.

* Victims for whom incident was cleared.

TABLE 5.2: NUMBER OF RECORDED CRIMINAL INCIDENTS FOR SELECTED OFFENCES BY CLEAR UP STATUS AND WHETHER LEGAL PROCEEDINGS COMMENCED, NSW, JANUARY TO DECEMBER 2010

<i>Type of offence</i>	<i>Recorded criminal incidents</i>						
	<i>Total number recorded</i>	<i>Cleared within 30 days of reporting</i>			<i>Cleared within 90 days of reporting</i>		
		<i>Total number cleared[#]</i>	<i>Proceedings commenced within 30 days^{##}</i>	<i>% proceedings commenced within 30 days</i>	<i>Total number cleared[#]</i>	<i>Proceedings commenced within 90 days^{##}</i>	<i>% proceedings commenced within 90 days</i>
Murder*	n.a.	n.a.	n.a.	n.a.	n.a.	n.a.	n.a.
Assault - domestic violence related	26,145	20,978	14,749	56.4	22,299	15,518	59.4
Assault - non-domestic violence related	39,851	17,739	8,631	21.7	20,320	10,206	25.6
Sexual assault	4,478	879	341	7.6	1,227	424	9.5
Indecent assault, act of indecency	3,748	1,071	494	13.2	1,433	635	16.9
Other sexual offences	1,526	488	268	17.6	568	316	20.7
Abduction and kidnapping	297	100	78	26.3	111	87	29.3
Robbery without a weapon	3,520	729	622	17.7	850	721	20.5
Robbery with a firearm	410	68	64	15.6	113	106	25.9
Robbery with a weapon not a firearm	1,487	352	331	22.3	403	377	25.4
Harassment, threatening behaviour and private nuisance	29,083	16,202	6,122	21.1	17,602	6,724	23.1
Break and enter dwelling	41,245	2,106	1,589	3.9	2,650	1,969	4.8
Break and enter non-dwelling	17,069	976	818	4.8	1,263	1,051	6.2
Motor vehicle theft	20,263	926	757	3.7	1,171	924	4.6
Steal from motor vehicle	44,783	991	763	1.7	1,172	898	2.0
Steal from retail store	20,511	11,483	9,203	44.9	12,196	9,867	48.1
Steal from dwelling	20,904	1,606	589	2.8	1,900	717	3.4
Steal from person	8,757	572	356	4.1	662	405	4.6
Stock theft	545	35	7	1.3	50	15	2.8
Fraud	36,266	3,506	2,173	6.0	4,864	3,135	8.6
Arson	5,869	296	130	2.2	341	154	2.6
Malicious damage to property	91,569	16,060	10,194	11.1	17,632	11,295	12.3

[#] Total number cleared includes both incidents where proceedings were commenced and those where no proceedings were commenced.

^{##} This includes incidents where a person was either proceeded against to court or proceeded against other than to court.

* Victims for whom incident was cleared.

TABLE 5.3: NUMBER OF RECORDED CRIMINAL INCIDENTS FOR SELECTED OFFENCES BY CLEAR UP STATUS AND WHETHER LEGAL PROCEEDINGS COMMENCED, NSW, JANUARY TO SEPTEMBER 2011

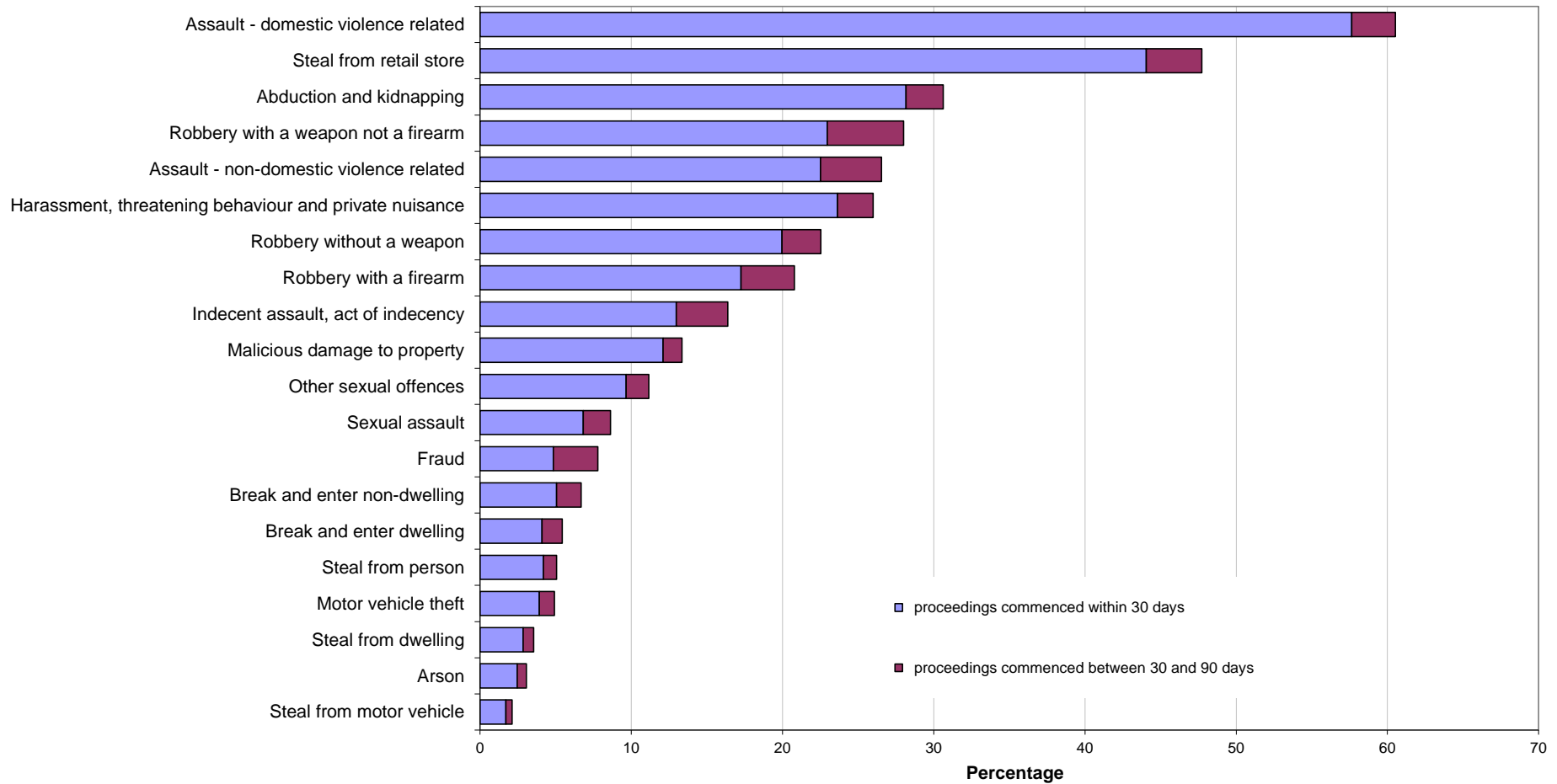
<i>Type of offence</i>	<i>Recorded criminal incidents</i>						
	<i>Total number recorded</i>	<i>Cleared within 30 days of reporting</i>			<i>Cleared within 90 days of reporting</i>		
		<i>Total number cleared[#]</i>	<i>Proceedings commenced within 30 days^{##}</i>	<i>% proceedings commenced within 30 days</i>	<i>Total number cleared[#]</i>	<i>Proceedings commenced within 90 days^{##}</i>	<i>% proceedings commenced within 90 days</i>
Murder*	n.a.	n.a.	n.a.	n.a.	n.a.	n.a.	n.a.
Assault - domestic violence related	19,885	16,000	11,460	57.6	16,930	12,037	60.5
Assault - non-domestic violence related	27,928	12,493	6,290	22.5	14,254	7,413	26.5
Sexual assault	3,286	649	224	6.8	893	283	8.6
Indecent assault, act of indecency	2,611	720	339	13.0	946	428	16.4
Other sexual offences	1,729	371	167	9.7	446	193	11.2
Abduction and kidnapping	284	99	80	28.2	112	87	30.6
Robbery without a weapon	2,285	528	456	20.0	597	515	22.5
Robbery with a firearm	255	45	44	17.3	56	53	20.8
Robbery with a weapon not a firearm	1,089	265	250	23.0	321	305	28.0
Harassment, threatening behaviour and private nuisance	22,419	12,671	5,300	23.6	13,782	5,829	26.0
Break and enter dwelling	29,659	1,581	1,216	4.1	2,083	1,613	5.4
Break and enter non-dwelling	12,620	762	638	5.1	1,020	842	6.7
Motor vehicle theft	14,574	733	572	3.9	925	716	4.9
Steal from motor vehicle	35,561	813	607	1.7	997	748	2.1
Steal from retail store	15,772	8,688	6,947	44.0	9,250	7,527	47.7
Steal from dwelling	15,315	1,172	437	2.9	1,382	543	3.5
Steal from person	6,307	400	264	4.2	485	319	5.1
Stock theft	551	22	2	0.4	32	6	1.1
Fraud	27,968	2,351	1,354	4.8	3,552	2,179	7.8
Arson	4,480	282	110	2.5	320	137	3.1
Malicious damage to property	64,745	12,026	7,837	12.1	13,199	8,654	13.4

[#] Total number cleared includes both incidents where proceedings were commenced and those where no proceedings were commenced.

^{##} This includes incidents where a person was either proceeded against to court or proceeded against other than to court.

* Victims for whom incident was cleared.

Figure 5.1: PERCENTAGE OF RECORDED CRIMINAL INCIDENTS FOR SELECTED OFFENCES WHERE LEGAL PROCEEDINGS COMMENCED WITHIN 30 AND 90 DAYS, NSW, JANUARY 2011 TO SEPTEMBER 2011



* For murder the data are counts of recorded victims, not criminal incidents.

APPENDICES

APPENDIX 1: TRENDS IN RECORDED CRIMINAL INCIDENTS FOR NSW

[1] Irrespective of how trends in recorded crime are presented, their interpretation is a difficult task. The recorded criminal incident data presented in this report are based on information derived from the NSW Police Force Computerised Operational Policing System (COPS), so only those incidents which are reported to, or detected by, police are included. The trends in recorded crime shown in this report will, therefore, reflect movements in the underlying factors which influence the detection, reporting and recording of crime, as well as changes in the true level of crime in the community.

[2] An alternative measure of the level of crime in Australia is available from crime victim surveys, for example the national *Crime Victimization Survey* (now in its third year) by the Australian Bureau of Statistics (ABS)¹. As well as providing an estimate of the victimisation rate at the State level for a selected set of offences, this survey estimates the proportion of crimes which are not reported to police, and are therefore not recorded in the official statistics. In particular, personal crimes, such as assault and robbery, are less likely to be reported than crimes which involve households. Given that some offences have low reporting rates, it is possible that changes in recorded crime rates over time for these offences may be reflecting changes in reporting rates. This ABS publication contains three years of personal and household summary crime data obtained from a national survey, some of which is disaggregated to state level (see Table 2 and Table 3)². For NSW, the latest report states that physical assault for those aged 15 and over was reported to police 54.6 percent of the time (not significantly different to the 54.5 percent in 2009-10) with a personal victimisation rate of 2.8 percent (not significantly different to the 2.4 percent estimate from 2009-10). For households, NSW break-ins were reported to police 81.2 percent of the time (significantly up from 69.5 percent in 2009-10) with a household victimisation rate of 2.7 percent (not significantly different to the 2.5 percent in 2009-10). For NSW the above estimates of the victimisation rates were not significantly different over the financial years 2008-9 to 2010-11.

[3] Public willingness to report crime, however, is just one of the extraneous factors which can affect trends in recorded crime. Shifts in policing policy can also have a marked effect on the number of recorded drug offences, cases of offensive behaviour or of receiving stolen goods. For these offences, therefore, recorded rates probably do not accurately reflect actual rates. For this reason, the more detailed comparisons of crime rates and examination of trends in this document are restricted to offence categories which are more likely to be reported to, rather than detected by police.

[4] The interpretation of trends in official reports of crime can be considerably more difficult than the interpretation of trends in unemployment or inflation statistics. The ease with which recorded crime statistics can be misunderstood creates a temptation to offer an authoritative explanation for each major crime trend. Indeed, in many instances it is simply impossible to state with any assurance why a particular trend has appeared. This report, therefore, confines itself to identifying and describing trends in recorded crime, rather than explaining them.

[5] For each offence category or subcategory (except murder), a statistical test for trend was applied to the monthly numbers of recorded criminal incidents over the relevant period. In the case of murder, the statistical test for trend was applied to the monthly numbers of victims over the period. The trend test used was Kendall's rank-order correlation test (see, for example, Conover, W.J. 1980, *Practical Non-Parametric Statistics*, 2nd ed, John Wiley and Sons, pp 256-260). A two-tailed test was used to determine whether there had been an increasing or decreasing trend in the recorded numbers of criminal incidents over the relevant period covered in the report. Some month to month variations in the numbers of recorded incidents could be due in part to seasonal factors. The test for trend is not sensitive to seasonal variations; it is sensitive only to a generally increasing or generally decreasing trend over the time period examined.

[6] For the trend tests throughout this publication, where a statistically significant trend was found ($p < .05$), the extent of the trend is indicated by percentage change in the total number of recorded criminal incidents between the latest two consecutive 12-month periods for 24-month tests; and the average annual percentage change between the first 12-month period and the latest 12-month period for tests over longer periods. A trend test was not performed if there were fewer than 20 incidents in any of the years for the period in question. The result ' . ' indicates that a trend test was not performed. A non-significant test result ($p > .05$) is denoted by 'Stable' or by 'ns' in some larger LGA tables.

[7] In order to present an overview of crime trends in NSW the information in Section 1 relates to aggregate violent and property crime. The State graphs for violent and property offences are plotted as monthly rates³ per 100,000 population. The State graph for violent offences shows distinct seasonality and the 12-month moving average (light grey line) indicates a slight downward path over the past few years, whilst the property offences graph and the 6-month moving average (light grey line) both indicate a strong downward path since about 2000. Violent offences include: *murder, assault - domestic violence related, assault - non-domestic violence related, assault police, robbery without a weapon, robbery with a firearm, robbery with a weapon not a firearm, sexual assault and indecent assault / act of indecency / other sexual offences*. Property offences include: *break and enter dwelling, break and enter non-dwelling, motor vehicle theft, steal from motor vehicle, steal from retail store, steal from dwelling, steal from person, stock theft, other theft and fraud*.

[8] The ratio to NSW rate statistics are a comparison of a NSW regional rate per 100,000 population to the NSW rate per 100,000 population. A ratio of one indicates parity with the NSW rate. Ratios indicating double the NSW rate (or more) before rounding are highlighted in red, whilst ratios indicating half the NSW rate (or less) before rounding are highlighted in yellow.

1. Australian Bureau of Statistics 2012, 4530DO001_201011 *Crime Victimization, Australia, 2010-11, Cat. No. 4530.0, ABS, Sydney.*

2. Australian Bureau of Statistics 2011, 4530DO001_201011 *Crime Victimization, Australia, 2010-11, Tables 2 and 3, Cat. No. 4530.0, ABS, Sydney.*

3. For the rate calculations throughout this publication, population data were obtained from the Australian Bureau of Statistics publication: *Regional Population Growth Australia 2009-10 Cat. No. 3218 (for 2009 and 2010 population estimates)*. As no population estimates were available for 2011 when this report was published, rates for 2011 were calculated using 2010 population estimates.

APPENDIX 2: DEFINITIONS AND EXPLANATORY NOTES

The data in this report are extracted from the NSW Police Force's Computerised Operational Policing System (COPS). This system is used for record-keeping for all police operations, not just for criminal matters.

In this report:

- the counting units are recorded *criminal incidents* rather than recorded *offences* (except for murder and manslaughter, where the counting units are victims); and
- the data are categorised by date of *reporting* to police (or date of detection by police) rather than by date of *occurrence* of the offence.
- Prior to August 2008, if police suspected a criminal incident reported to them did not occur they could record it as 'doubtful'. In the past BOCSAR's recorded crime statistics have included 'accepted' and 'doubtful' incidents. In August 2008 NSW Police removed the 'doubtful' category from COPS, instead directing police officers to categorise these incidents as 'accepted' unless evidence existed to indicate the crime did not occur. In which case the incident would be categorised as 'rejected'. Thus recorded crime statistics from August 2008 to the present have not contained 'doubtful' incidents. In order to present a continuous series BOCSAR have decided to retrospectively limit recorded crime statistics to only 'accepted' incidents. To do this we have removed the 'doubtful' incidents from crime data from January 1995 to August 2008. There will therefore be a slight revision to incident counts recorded prior to 2008. This means that reports from 2009 onwards will differ slightly in some offence counts from those in reports published prior to 2009.

RECORDED CRIMINAL INCIDENTS

A criminal incident is defined as an activity detected by or reported to police which:

- involved the same offender(s);
- involved the same victim(s);
- occurred at the one location;
- occurred during one uninterrupted period of time;
- falls into one offence category;
- falls into one incident type (for example, 'actual', 'attempted', 'conspiracy').

One incident may involve two offenders assaulting the same victim. This would be recorded as one assault incident. Alternatively, suppose a man reports to police that he found his neighbour in the process of damaging his car and, when confronted, the neighbour assaulted him. For such an event, two criminal incidents are recorded because two distinct offence types are involved (malicious damage to property and assault) even though the same parties were involved at the same time and in the same place.

RECORDED VICTIMS

For murder and manslaughter only, the counting units used are victims. Under the definition of a criminal incident (same parties, same time, same place, same offence and same incident type) one murder or manslaughter incident could involve two or more persons being killed. Because of the seriousness of these offences and their relatively small numbers, it is considered to be more appropriate to count the number of victims, rather than the number of criminal incidents. Hence, where one murder incident involves a person killing six people, six murder victims are counted.

OFFENCE CATEGORIES

The classification of offences in this report is broadly based on the Australian and New Zealand Standard Offence Classification (ANZSOC) devised by the Australian Bureau of Statistics (*ABS 2011, third edition, Cat. No. 1234.0*).

For all type of offence classifications used in the report, Appendix 3 lists the offence categories included in the classification. The original offence incident categories are those used by the NSW Police Force and do not necessarily correspond exactly with offences as defined in legislation.

APPENDIX 2: DEFINITIONS AND EXPLANATORY NOTES *continued*

MAJOR OFFENCE CATEGORIES

Major offence categories include the most serious personal violence and property offences. The most serious of these offences is *murder* for which the incident count is the number of victims. Assault offences include the two major offence categories of *domestic violence related assault* and *non-domestic violence related assault*. All sexual offences are categorised by the two major offence types, either as *sexual assault* or *indecent assault, act of indecency and other sexual offences*.

Robbery offences are sorted into three categories by use of weapon: *robbery with a firearm*, *robbery with a weapon not a firearm* or *robbery without a weapon*. The serious theft offences in this group start with the burglary categories of *break and enter - dwelling* and *break and enter - non-dwelling* followed by *motor vehicle theft* and *steal from motor vehicle*. Other theft offences included in the 17 major offences are *steal from retail store*, *steal from dwelling*, *steal from person* and *fraud*. The final property offence listed as a major offence is *malicious damage to property*.

COUNTING PERIOD

Criminal incidents are included in the counting period in which they were reported to or detected by police.

In most cases criminal incidents are recorded on COPS on the day of reporting. However there may be some time delay before the incident gains the status of accepted and verified (which are necessary conditions for inclusion in this report). It is therefore possible for some updating of data to occur. That is, data extracted for a specified period of time (incidents reported during 2010-11, for example), may differ according to the date of extraction of the data.

PROCEEDINGS AGAINST ALLEGED OFFENDERS

Police may proceed against alleged offenders through a variety of legal or other processes. Most alleged offenders are referred to the NSW Criminal Courts. The more serious offences are dealt with by way of a Bail Court Attendance Notice or a No-Bail Court Attendance Notice. In these instances, the alleged offender is arrested, taken to a police station, fingerprinted and the details of the person and all charges are recorded. Alternatively a Field Court Attendance Notice may be issued by police at other locations. A Future Court Attendance Notice is used for less serious offences. Due to the time lag between the incident being recorded and the Future CAN being issued, data for the last three months are likely to be low and subject to future revision.

Some alleged offenders are proceeded against but diverted from the criminal court system. For many minor offences police can issue Infringement Notices. By paying the prescribed penalty the offender avoids having to go to court. Under the *Young Offenders Act 1997*, a juvenile offender can be issued with either a warning, a caution or referred to a youth justice conference.

Data on warnings under the *Young offenders Act*, is available from January 2010 onwards. Due to changes in how warnings are recorded, this data series can not be compared with warning data previously published. A youth justice conference is a face-to-face meeting between offenders, victims and their support persons. The offending behaviour is discussed and an outcome plan for the offender negotiated. Note that both the police and the courts can refer a young person to a youth justice conference. However, the number of alleged offenders proceeded against by way of a youth justice conference, as shown in Table 4.1 includes only police referrals to a youth justice conference.

Each offender or alleged offender appears only once in the table for each event. Note that multiple criminal incidents may be associated with a single event. The processes are arranged in a hierarchy with the offender or alleged offender appearing in the most serious category where multiple incidents are involved. For example if an event involves two incidents and the alleged offender is charged for one incident but receives a caution for the second incident, the alleged offender appears only in the relevant '*proceeded against to court*' category.

APPENDIX 2: DEFINITIONS AND EXPLANATORY NOTES *continued*

PROCEEDINGS AGAINST ALLEGED OFFENDERS *continued*

Note that in these tables, the year refers to the year in which the criminal incident or incidents were reported to police. For example, if an incident was reported to police in 2009 but the alleged offender was not apprehended and charged until 2010, the offence is counted for 2009. This section also includes a figure showing trends over 24 months in methods of proceeding against offenders and alleged offenders which lead to attendance at court. Alleged offenders who are not legally proceeded against are not included in this report.

CLEARED CRIMINAL INCIDENTS

A cleared criminal incident is one, which, in the view of police, has been satisfactorily cleared by the commencement of legal proceedings or otherwise.

An incident is cleared by the commencement of legal proceedings when police have laid a charge or an information against at least one person. The information may have been laid with a view to the issuing of a warrant, Future CAN or other process for the purpose of bringing an offender before the court.

A criminal incident is cleared other than by commencement of legal proceedings when, under normal circumstances, a charge or information would have been laid against at least one person, but, for a variety of reasons, police have been unable to make an arrest, despite knowing the identity of the offender and having sufficient evidence to support a charge. Examples of situations in which an offence may be cleared other than by charge include the following:

- . the offender is a juvenile and is cautioned;
- . the offender has died before a charge is made or information laid;
- . the offender has been committed to a psychiatric institution and is unlikely to be released;
- . there is an obstacle to charging, such as diplomatic immunity;
- . the complainant or essential witness is dead and proceedings would be aborted;
- . the offender is serving a sentence and police consider that no useful purpose would be served by prosecution.

The offence types included in these tables are those where the crime is likely to have been reported to police, rather than discovered or detected by police. Offence types where the numbers of recorded criminal incidents are influenced by police law enforcement activity (drug offences, for example) are excluded. For such offence types, the clear-up percentages are very high because clearing the offence generally occurs simultaneously with its detection (that is, an arrest is made when the crime is discovered). This report contains criminal incidents cleared within 30 and 90 days after the incident was reported to the NSW Police Force.

Because the data for this report were extracted early in February 2012, the clear-up status after 90 days could not be determined for any offences reported in the last three months of 2011. Hence, the clear-up data for 2011 are for the first nine months of the year only.

REGIONAL STATISTICS

Statistics are provided on the number of criminal incidents (victims for murder) recorded for each of the Statistical Divisions of NSW as defined by the Australian Bureau of Statistics (ABS). Within the Sydney Statistical Division, statistics are provided for Statistical Subdivisions.

Recorded criminal incidents which occurred in correctional, detention or remand centres, however, are not counted in the Statistical Division in which the incident occurred. Appendix 4 provides maps indicating the location of each Statistical Division and Sydney Statistical Subdivision. Appendix 5 lists the Local Government Areas (LGAs using 2008 boundaries) within each of the Sydney Statistical Subdivisions and regional Statistical Divisions. Note that LGA boundaries change from time to time and that the current list differs from that stated in the 2004 NSW recorded crime report. A criminal incident is counted within a particular region when the location of the offence falls within that region.

For the rate calculations, population data were obtained from the Australian Bureau of Statistics publication: *Regional Population Growth, Australia, 2009-10*, Cat. No. 3218.0 (for 2009 and 2010 population estimates). As no population estimates were available for 2011 when this report was published, rates for 2011 were calculated using 2010 population estimates.

APPENDIX 3: BOCSAR OFFENCES MAPPED TO POLICE INCIDENT CATEGORIES

BOCSAR offence	NSW Police Force offence incident categories
Homicide	
Murder	Murder – actual
Attempted murder	Murder – attempted Shoot with intent to murder
Murder accessory, conspiracy	Murder accessory Murder conspiracy
Manslaughter – not driving	Manslaughter
Driving causing death	Driving causing death
Assault	
	<i>Includes any of the following offences disaggregated by whether or not police have flagged the incident as domestic violence related:</i>
Domestic violence related	Actual bodily harm Grievous bodily harm (including malicious wounding) Common assault Shoot with intent other than to murder Spike drink/food
Non-domestic violence related	Actual bodily harm Grievous bodily harm (including malicious wounding) Common assault Shoot with intent other than to murder Spike drink/food
Assault Police	Assault Police officer
Sexual offences	
Sexual assault	Sexual assault where; – adult victim (16+ years old) – child victim, reported when adult – child victim, reported when child
Indecent assault, act of indecency	Act of indecency Aggravated act of indecency Indecent assault – adult victim (16+ years old) Indecent assault – child victim, reported when child Indecent assault – child victim, reported when adult
Other sexual offences	Incest Carnal knowledge Wilful and obscene exposure Indecent communication Peep or pry Bestiality Grooming / procuring Other sexual offence
Abduction and kidnapping	Abduction / kidnapping

APPENDIX 3: BOCSAR OFFENCES MAPPED TO POLICE INCIDENT CATEGORIES

BOCSAR offence	NSW Police Force offence incident categories
Robbery	
Robbery without a weapon	<i>Includes any of the following offences in which no weapon was recorded:</i> Robbery Robbery with aggravation Demand money with menaces Robbery with wounding Other robbery
Robbery with a firearm	<i>Includes any of the following offences in which a firearm was recorded as a weapon:</i> Armed robbery Robbery Robbery with aggravation Demand money with menaces Robbery with wounding Other robbery
Robbery with a weapon not a firearm	<i>Armed robbery where a firearm was not recorded as a weapon or any of the following offences in which a weapon other than a firearm was recorded:</i> Robbery Robbery with aggravation Demand money with menaces Robbery with wounding Other robbery
Blackmail and extortion	Extortion / blackmail
Harassment, threatening behaviour and private nuisance	Intimidation (<i>includes threatening behaviour, stalking</i>) Threats against Police Telecommunications offence (<i>includes nuisance phone calls</i>) Violent disorder Riot and affray Unlawful assembly
Other offences against the person	Malicious damage with intent to injure / endanger Negligent act cause grievous bodily harm Other offence against the person
Theft	
Break and enter – dwelling	<i>Dwelling includes premises where people reside such as house, home unit, caravan, tent as well as any attachment such as garage, shed, yard and garden.</i> Break, enter and steal Break, enter intent to steal Break, enter and commit other felony Break, enter, intent to commit other felony
Break and enter – non-dwelling	<i>Non-dwelling includes commercial and government premises.</i> Break, enter and steal Break, enter intent to steal Break, enter and commit other felony Break, enter and intent to commit other felony

APPENDIX 3: BOCSAR OFFENCES MAPPED TO POLICE INCIDENT CATEGORIES

BOCSAR offence	NSW Police Force offence incident categories
Theft continued:	
Receiving or handling stolen goods	Receiving Goods in custody Possess property stolen outside NSW
Motor vehicle theft	Theft of motor cars, motor cycles, and other vehicles / vessels Rebirthing vehicles / vessels
Steal from motor vehicle	Steal from motor vehicle
Steal from retail store	Steal from retail store
Steal from dwelling	Steal from dwelling Other stealing <i>occurring in a residential dwelling</i>
Steal from person	Steal from person
Stock theft	Steal stock (animal)
Fraud	Larceny clerk / servant / bailee Make / use false instrument Embezzlement Fraudulent misappropriation Company / corporate offence Deception offence Possess false instrument Publish false misleading statement Corrupt commission / practices Counterfeit currency Other fraud Computer crime Copyright / Intellectual property / Trademark Fail to pay Misappropriate cheques / funds Corrupt payment (receive or pay) Receiving (fraud related)
Other theft	Steal from marine vessel Steal vessel Other stealing <i>occurring somewhere other than a residential dwelling</i> (e.g. at temporary accommodation, business / commercial premises, in outdoor / public places, recreation, health, education premises)
Arson	Bushfire, fire of structure, commodity, or vehicle (e.g. aircraft / motor vehicle / train / vessel) Malicious damage, intent to injure or financial gain by fire
Malicious damage to property	Malicious damage to property Graffiti Public place – damage fountain / wall etc. Public place – damage shrine / monument

APPENDIX 3: BOCSAR OFFENCES MAPPED TO POLICE INCIDENT CATEGORIES

<i>BOCSAR offence</i>	<i>NSW Police Force offence incident categories</i>
Drug offences	
Possession and / or use of cocaine	Possess drug <i>where drug type is cocaine</i> Use or administer drug <i>where drug type is cocaine</i>
Possession and / or use of narcotics	Possess drug <i>where drug type is narcotics</i> Use or administer drug <i>where drug type is narcotics</i>
Possession and / or use of cannabis	Possess drug / plant <i>where drug type is cannabis</i> Use or administer drug <i>where drug type is cannabis</i>
Possession and / or use of amphetamines	Possess drug <i>where drug type is amphetamines</i> Use or administer drug <i>where drug type is amphetamines</i>
Possession and / or use of ecstasy	Possess drug <i>where drug type is ecstasy</i> Use or administer drug <i>where drug type is ecstasy</i>
Possession and / or use of other drugs	Possess drug <i>where drug type is not cocaine, narcotics, cannabis, amphetamines or ecstasy</i> Use or administer drug <i>where drug type is not cocaine, narcotics, cannabis, amphetamines or ecstasy</i>
Dealing, trafficking in cocaine	Supply drug <i>where drug type is cocaine</i>
Dealing, trafficking in narcotics	Supply drug <i>where drug type is narcotics</i>
Dealing, trafficking in cannabis	Supply drug / plant <i>where drug type is cannabis</i>
Dealing, trafficking in amphetamines	Supply drug <i>where drug type is amphetamines</i>
Dealing, trafficking in ecstasy	Supply drug <i>where drug type is ecstasy</i>
Dealing, trafficking in other drugs	Supply drug <i>where drug type is not cocaine, narcotics, cannabis, amphetamines or ecstasy</i>
Cultivating cannabis	Cultivation
Manufacture drug	Manufacture drug
Importing drugs	Import drug / plant
Other drug offences	Forge and / or utter prescription Possess drug utensil Other drug detection / seizure offence

APPENDIX 3: BOCSAR OFFENCES MAPPED TO POLICE INCIDENT CATEGORIES

<i>BOCSAR offence</i>	<i>NSW Police Force offence incident categories</i>
Prohibited and regulated weapons offences	Possess whilst unlicensed Possess shortened firearm Possess prohibited weapon / article Shorten firearm Firearms, dealer offence Unlawfully discharge firearm Trespass with firearm Use firearm under influence Discharge firearm into premises Other firearm offence Other firearm licensing offence Firearms, not ensure safekeeping Use prohibited weapon / article Sell prohibited weapon / article Other prohibited weapon / article offence Bomb hoax or threat Possess explosive / dangerous article Item / object found where item / object is a weapon Explosives licensing offence Unlawful handling / access / supply of explosives Improper storage of explosives Other explosives offence
Disorderly conduct	
Trespass	Trespass Remain inclosed lands
Offensive conduct	Offensive conduct
Offensive language	Offensive language
Criminal intent	Enter land with intent Armed with intent Disguised with intent Intent to repeat indictable offence Possess implements
Betting and gaming offences	Own / manage premises – gaming Own / manage premises – betting Conduct / play illegal game/betting Other gaming offence
Liquor offences	Consume alcohol in public by minor Consume alcohol in alcohol-free zone Licensing legislation offence: <ul style="list-style-type: none"> – Offence by licensee / employee / secretary – Offence by minor – Offence by customer (not minor) – Supply liquor to juvenile – Offence against registered clubs
Pornography offences	Possess / disseminate child pornography Possess / publish indecent material

APPENDIX 3: BOCSAR OFFENCES MAPPED TO POLICE INCIDENT CATEGORIES

BOCSAR offence	NSW Police Force offence incident categories
Prostitution offences	Soliciting / prostitution in public Prostitution – premises Prostitution – live off earnings Consorting Child prostitution Other vice offence
Against justice procedures	
Escape Custody	Escapee – Department of Community Services custody Escapee – Corrective Services custody Escapee – Police custody Escapee – Other custody
Breach Apprehended Violence Order	Breach Apprehended Violence Order – domestic Breach Apprehended Violence Order – personal
Breach bail conditions	Breach bail conditions
Fail to appear	Fail to appear
Resist or hinder officer	Resist/hinder officer Refuse to be searched Refuse to produce object Refuse direction drug related / not drug related Refuse direction intoxicated person / continue intoxicated and disorderly Refuse for vehicle to be searched
procedures	Other judicial offence Contravene Child Protection Prohibition Order (CPPO)
Transport regulatory offences	Transport offence (<i>includes offences on the rail network such as travelling without a valid ticket, smoking, drinking or using offensive language on a train or railway land</i>)
Other offences	Immigration / customs offence Animals – dog offences Family law offence Obstruction Public mischief Offence against transport service Other street offences (carry cutting weapon, offensive implement) Terrorism offences Other miscellaneous offences Offences under various acts: Acts administered by NSW Transport, Roads and Maritime Services <i>Australian Postal Corporation Act 1989 (Cwlth)</i> <i>Children and Young Persons (Care and Protection) Act 1998 (NSW)</i> <i>Companion Animals Act 1998 (NSW)</i> <i>Family Law Act 1975 (Cwlth)</i> <i>Local Government Act 1993 (NSW)</i> <i>Pawnbrokers and Second-hand Dealers Act 1996 (NSW)</i> <i>Prevention of Cruelty to Animals Act 1979 (NSW)</i> <i>Rural Fires Act 1997 (NSW)</i> <i>Security Industry Act 1997 (NSW)</i>

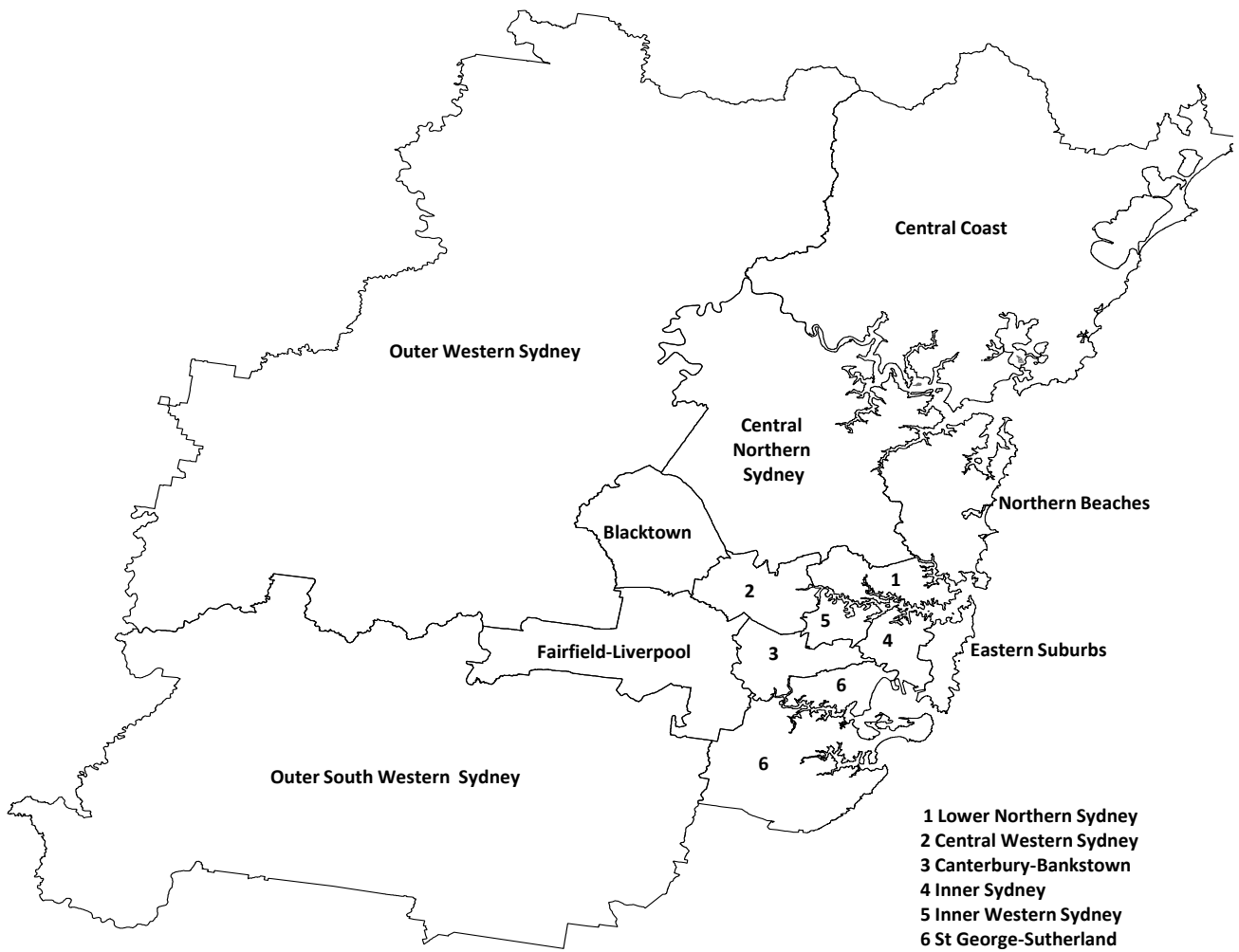
APPENDIX 4: MAPS

Map 1: New South Wales Statistical Division boundaries



APPENDIX 4: MAPS *continued*

Map 2: Sydney Statistical Subdivision boundaries



APPENDIX 5: LGAS IN METROPOLITAN STATISTICAL SUBDIVISIONS***Sydney Statistical Subdivisions***

<i>Inner Sydney</i>	<i>Inner Western Sydney</i>	<i>Central Northern Sydney</i>
Botany Bay	Ashfield	Hornsby
Leichhardt	Burwood	Ku-ring-gai
Marrickville	Canada Bay	The Hills Shire
Sydney	Strathfield	
<i>Eastern Suburbs</i>	<i>Central Western Sydney</i>	<i>Northern Beaches</i>
Randwick	Auburn	Manly
Waverley	Holroyd	Pittwater
Woollahra	Parramatta	Warringah
<i>St George – Sutherland</i>	<i>Outer Western Sydney</i>	<i>Central Coast</i>
Hurstville	Blue Mountains	Gosford
Kogarah	Hawkesbury	Wyong
Rockdale	Penrith	
Sutherland Shire		
<i>Canterbury – Bankstown</i>	<i>Blacktown</i>	<i>Newcastle</i>
Bankstown	Blacktown	Cessnock
Canterbury		Lake Macquarie
		Maitland
		Newcastle
		Port Stephens
<i>Fairfield – Liverpool</i>	<i>Lower Northern Sydney</i>	
Fairfield	Hunters Hill	
Liverpool	Lane Cove	
	Mosman	<i>Wollongong</i>
<i>Outer South Western Sydney</i>	North Sydney	Kiama
Camden	Ryde	Wollongong
Campbelltown	Willoughby	Shellharbour
Wollondilly		

APPENDIX 5: LGAS IN NSW REGIONAL STATISTICAL DIVISIONS***NSW regional Statistical Divisions***

<i>Hunter</i>	<i>Illawarra</i>	<i>Richmond – Tweed</i>	<i>Mid-North Coast</i>
Cessnock	Kiama	Ballina	Bellingen
Dungog	Shellharbour	Byron	Clarence Valley
Gloucester	Shoalhaven	Kyogle	Coffs Harbour
Great Lakes	Wingecarribee	Lismore	Greater Taree
Lake Macquarie	Wollongong	Richmond Valley	Port Macquarie–Hastings
Maitland		Tweed	Kempsey
Muswellbrook			Lord Howe Island
Newcastle			Nambucca
Port Stephens			
Singleton			
Upper Hunter Shire			
<i>Northern</i>	<i>North Western</i>	<i>Central West</i>	<i>South Eastern</i>
Armidale Dumaresq	Bogan	Bathurst Regional	Bega Valley
Glen Innes Severn	Bourke	Bland	Bombala
Gunnedah	Brewarrina	Blayney	Boorowa
Guyra	Cobar	Cabonne	Cooma–Monaro
Gwydir	Coonamble	Cowra	Eurobodalla
Inverell	Dubbo	Forbes	Goulburn Mulwaree
Liverpool Plains	Gilgandra	Lachlan	Harden
Moree Plains	Mid-Western Regional	Lithgow	Palerang
Narrabri	Narromine	Oberon	Queanbeyan
Tamworth Regional	Walgett	Orange	Snowy River
Tenterfield	Warren	Parkes	Upper Lachlan Shire
Uralla	Warrumbungle Shire	Weddin	Yass Valley
Walcha	Wellington		Young
<i>Murrumbidgee</i>	<i>Murray</i>	<i>Far West</i>	
Carrathool	Albury	Broken Hill	
Coolamon	Balranald	Central Darling	
Cootamundra	Berrigan	Unincorporated Far West	
Griffith	Conargo		
Gundagai	Corowa Shire		
Hay	Deniliquin		
Junee	Greater Hume Shire		
Leeton	Jerilderie		
Lockhart	Murray		
Murrumbidgee	Tumbarumba		
Narrandera	Urana		
Temora	Wakool		
Tumut	Wentworth		
Wagga Wagga			

