

NEW SOUTH WALES RECORDED CRIME STATISTICS

Quarterly Update
December 2018

**NSW
Statistical Areas
and
Local Government Areas**

NSW Bureau of Crime Statistics and Research

ACKNOWLEDGEMENTS

The production of this report was greatly assisted by officers within the NSW Police Force. Special thanks are due to officers in Business and Technology Services and in Corporate Information, Executive Support Group. The following officers of the NSW Bureau of Crime Statistics and Research contributed significantly to the production of this report. Thanks to Darren Kwok for processing the data contained in the report, Derek Goh for preparing the report and Jessie Holmes for reviews and presentation improvements.

2018

Published by the NSW Bureau of Crime Statistics and Research
Department of Justice
Level 1
Henry Deane Building
20 Lee St
Sydney NSW 2000
Australia

Phone: + 61 (2) 8346 1100
Fax: + 61 (2) 8364 1298
Email: bcsr@justice.nsw.gov.au
Website: www.bocsar.nsw.gov.au
ISSN: 1035-9044

This report is available in pdf format on our website and may be provided in alternative formats. Please contact the Bureau on 8346 1100 or email us at bcsr@justice.nsw.gov.au.

INTRODUCTION

This report presents data on crime reported to, or detected by, the NSW Police Force from January 1995 to December 2018, with a focus on the statistical trends for the 24 months ending December 2018. The data were extracted from the Computerised Operational Policing System (COPS) of the NSW Police Force in February 2019.

The report includes an overview of trends in the most recent two-year period for major offence categories, firstly for NSW and then across NSW regions broken down to the Local Government Area (LGA) level. At the State level, for the latest 24-month period, no major offence category has been trending upwards. Two of the 17 major offence categories were trending downwards: break and enter dwelling (down 4.7%) and steal from person (down 7.2%).

The NSW graphs for rates of violent and property offences are on page 7 of the report. For violent offences using the 12-month moving average (light grey line) we can see a downward path from 2004, which has stabilised over the last 5 years. The trend tests shown in Table 1.1 indicate that only one NSW Statistical Area is experiencing a significant downward trend in violent crime (Far West and Orana up 13.0%). The property offences graph using the 6-month moving average (light grey line) indicates a strong downward path from 2000 to 2010, after which there are further declines but at a slower rate. Table 1.1 showing trend tests on the levels of property offences indicates a significant decrease over the last five years.

Dr Don Weatherburn

March 2019

© State of New South Wales through the Department of Justice NSW 2017. You may copy, distribute, display, download and otherwise freely deal with this work for any purpose, provided that you attribute the Department of Justice NSW as the owner. However, you must obtain permission if you wish to (a) charge others for access to the work (other than at cost), (b) include the work in advertising or a product for sale, or (c) modify the work.

CONTENTS

	ACKNOWLEDGEMENTS	2
	INTRODUCTION	3
SECTION 1:	OVERVIEW OF TRENDS IN VIOLENT AND PROPERTY CRIME	. . . 7
Figure 1.1	NSW long-term trend in violent crime	. . . 9
Figure 1.2	NSW long-term trend in property crime	. . . 9
Table 1.1	Trends in violent and property offences, over the 60 months to December 2018, NSW Statistical Areas (SAs) and NSW	. . . 10
Table 1.2	Trends in violent and property offences, over the 60 months to December 2018, NSW Statistical Areas (SAs) and NSW	. . . 11
Table 1.3	Trends in violent and property offences, over the 60 months to December 2018, NSW Local Government Areas (LGAs)	. . . 12
SECTION 2:	OVERVIEW OF TRENDS IN RECORDED CRIME, BY OFFENCE TYPE	. . . 15
Table 2.1	Trends in recorded criminal incidents for major offences, over the 60 months to December 2018, NSW	. . . 16
Table 2.2	Periodic trends in recorded criminal incidents for major offences over the 60 months to December 2018, NSW	. . . 17
Table 2.3	Number and trends in recorded criminal incidents for 62 offences, over the 24 months to December 2018, NSW	. . . 18
Table 2.4	Number and outcome of 24-month trend for major offences, NSW Local Government Areas (LGAs), all reports 2009 to December 2018	19
Figure 2.1A	Number of NSW LGAs with significant upward trends for major offences in the 24-month periods to December 2017 and December 2018	. . . 20
Figure 2.1B	Number of NSW LGAs with significant downward trends for major offences in the 24-month periods to December 2017 and December 2018	. . . 20
SECTION 3:	TRENDS, RATE COMPARISONS AND RECORDED CRIMINAL INCIDENTS FOR MAJOR OFFENCES, NSW REGIONS AND LGAS	. . . 21
Table 3.1A	Trends in recorded criminal incidents for major offences, over the 24 months to December 2018, NSW SAs	. . . 22
Table 3.1B	Ratio to NSW rate of recorded criminal incidents per 100,000 population for major offences, over the 12 months to December 2018, NSW SAs	. . . 22
Table 3.1C	Number of recorded criminal incidents for major offences, over the 12 months to December 2018, NSW SAs	. . . 23
Table 3.1D	Number of recorded criminal incidents for major offences, over the 12 months to December 2017, NSW SAs	. . . 23
Table 3.2A	Trends in recorded criminal incidents for major offences, over the 24 months to December 2018, Greater Sydney SAs	. . . 24
Table 3.2B	Ratio to NSW rate of recorded criminal incidents per 100,000 population for major offences, over the 12 months to December 2018, Greater Sydney SAs	. . . 24
Table 3.2C	Number of recorded criminal incidents for major offences, over the 12 months to December 2018, Greater Sydney SAs	. . . 25
Table 3.2D	Number of recorded criminal incidents for major offences, over the 12 months to December 2017, Greater Sydney SAs	. . . 25

SECTION 3:	TRENDS, RATE COMPARISONS AND RECORDED CRIMINAL INCIDENTS FOR MAJOR OFFENCES, NSW REGIONS AND LGAS <i>continued</i>	
Table 3.3A	Trends in recorded criminal incidents for major offences, over the 24 months to December 2018, NSW LGAs	. . . 26
Table 3.3B	Ratio to NSW rate of recorded criminal incidents per 100,000 population for major offences, over the 12 months to December 2018, NSW LGAs	. . . 28
Table 3.3C	Number of recorded criminal incidents for major offences, over the 12 months to December 2018, NSW LGAs	. . . 30
Table 3.3D	Number of recorded criminal incidents for major offences, over the 12 months to December 2017, NSW LGAs	. . . 32
SECTION 4:	METHODS OF PROCEEDINGS AGAINST ALLEGED OFFENDERS	. . . 35
Figure 4.1	Trends in referral methods for alleged offenders proceeded against to court over the 24 months to December 2018, NSW	36
Table 4.1	Number, percentage and trend in alleged offenders proceeded against by NSW Police by method of legal proceedings over the 24 months to December 2018, NSW	. . . 37
Table 4.2	Number, percentage and trend in alleged offenders proceeded against to court by NSW Police for major offences over the 24 months to December 2018, NSW	38
SECTION 5:	CLEARED CRIMINAL INCIDENTS AND WHETHER LEGAL PROCEEDINGS COMMENCED FOR SELECTED OFFENCES	. . . 39
Table 5.1	Number of recorded criminal incidents for selected offences by whether legal proceedings commenced in 30 days of reporting over the 24 months to November 2018, NSW	. . . 40
Table 5.2	Number of recorded criminal incidents for selected offences by whether legal proceedings commenced in 90 days of reporting over the 24 months to September 2018, NSW	41
Figure 5.1	Percentage of recorded criminal incidents for selected offences where legal proceedings commenced within 30 and 90 days, over the 12 months to September 2018, NSW	. . . 42
APPENDICES		43
	APPENDIX 1: TRENDS IN RECORDED CRIMINAL INCIDENTS IN NSW	. . . 44
	APPENDIX 2: DEFINITIONS AND EXPLANATORY NOTES	. . . 45
	APPENDIX 3: BOCSAR OFFENCES MAPPED TO POLICE INCIDENT CATEGORY	. . . 48
	APPENDIX 4: NSW & GREATER SYDNEY STATISTICAL AREA MAPS	. . . 55
	APPENDIX 5: LGAS IN GREATER SYDNEY STATISTICAL AREAS	. . . 57
	APPENDIX 5: LGAS IN NSW REGIONAL STATISTICAL AREAS	. . . 58

SECTION 1:

**OVERVIEW OF TRENDS
IN VIOLENT AND PROPERTY CRIME**

FIGURE 1.1: NSW LONG-TERM TREND IN VIOLENT OFFENCES*

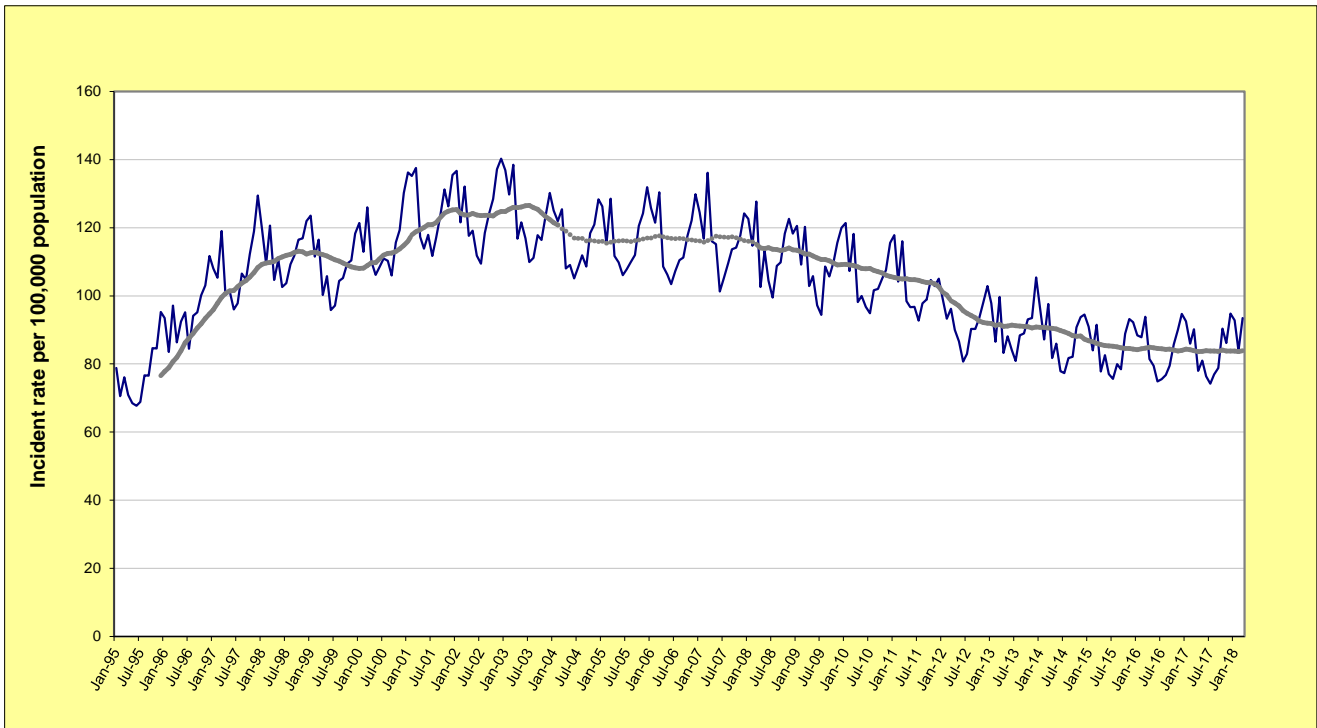
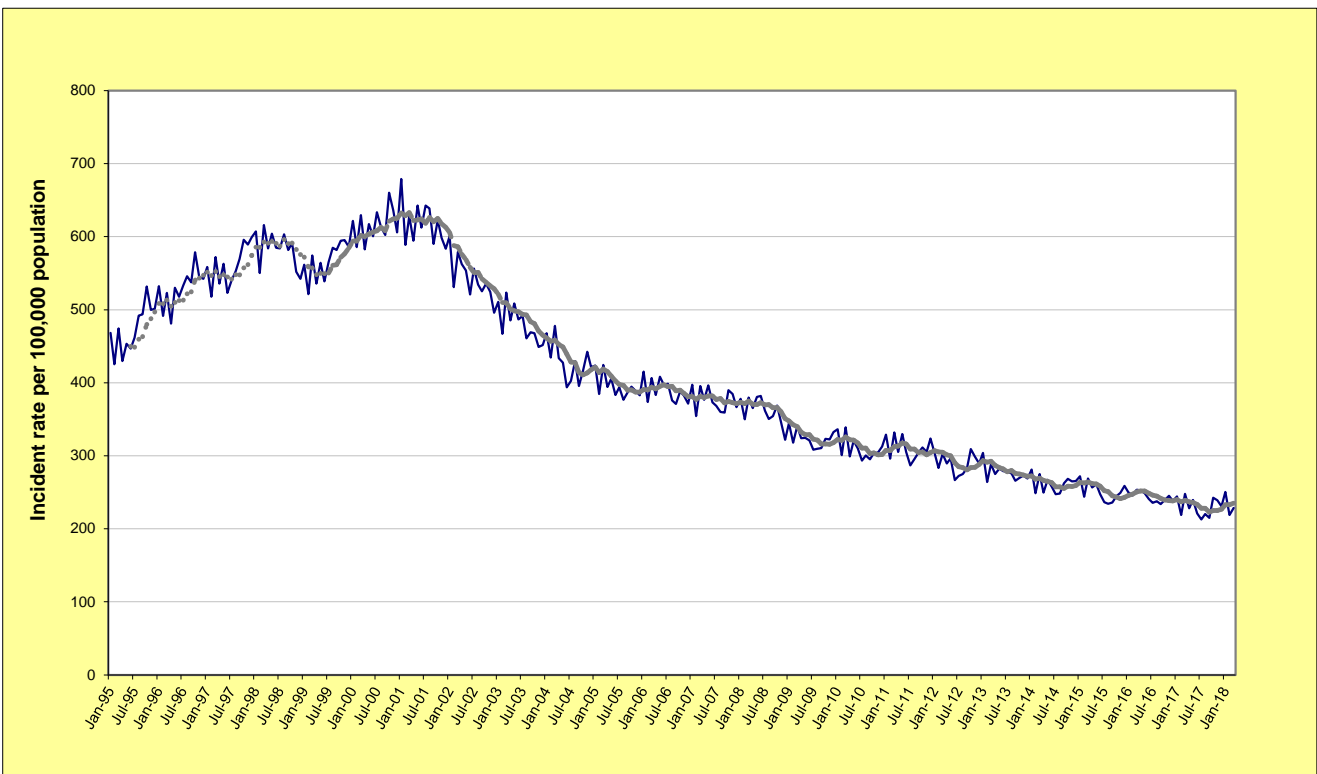


FIGURE 1.2: NSW LONG-TERM TREND IN PROPERTY OFFENCES**



* **Violent offences** include: murder, attempted murder, manslaughter, assault - domestic violence related, assault - non-domestic violence related, assault police, robbery without a weapon, robbery with a firearm, robbery with a weapon not a firearm, sexual assault and indecent assault / act of indecency / other sexual offences.

** **Property offences** include: break and enter dwelling, break and enter non-dwelling, motor vehicle theft, steal from motor vehicle, steal from retail store, steal from dwelling, steal from person, stock theft, other theft and fraud.

For further explanation of **violent offences** and **property offences**, see page 44, Note [7].

**TABLE 1.1: TRENDS[^] IN RECORDED CRIMINAL INCIDENTS, VIOLENT AND PROPERTY OFFENCES
OVER THE 60 MONTHS TO DECEMBER 2018, NSW STATISTICAL AREAS (SAs) AND NSW**

NSW Statistical Area	Violent Offences*			Property Offences**		
	Annual percentage change over the last 24 months	Average annual percentage change over the last 60 months	Ratio [#] to NSW rate	Annual percentage change over the last 24 months	Average annual percentage change over the last 60 months	Ratio [#] to NSW rate
Greater Sydney	Stable	Stable	0.9	Stable	-3.7%	0.9
Capital Region	Stable	Stable	0.9	Stable	Stable	0.8
Central West	Stable	Stable	1.4	Stable	-6.3%	1.1
Coffs Harbour - Grafton	Stable	Stable	1.4	13.6%	Stable	1.2
Far West and Orana	13.0%	Stable	2.6	Stable	Stable	2.0
Hunter Valley excluding Newcastle	Stable	3.2%	1.2	Stable	Stable	1.2
Illawarra	Stable	-3.9%	0.8	Stable	-2.4%	0.9
Mid North Coast	Stable	Stable	1.3	17.4%	3.2%	1.3
Murray	Stable	Stable	1.2	Stable	Stable	1.2
New England and North West	Stable	Stable	1.6	Stable	Stable	1.5
Newcastle and Lake Macquarie	Stable	Stable	1.1	Stable	2.9%	1.4
Richmond - Tweed	Stable	Stable	1.1	Stable	Stable	1.0
Riverina	Stable	Stable	1.4	Stable	Stable	1.3
Southern Highlands and Shoalhaven	Stable	Stable	0.9	Stable	-6.4%	0.8
NSW	Stable	Stable	1.0	Stable	-2.3%	1.0

[^] For further explanation of trend results, see page 44, Notes [5] and [6].

* **Violent offences** include: murder, assault - domestic violence related, assault - non-domestic violence related, assault police, robbery without a weapon, robbery with a firearm, robbery with a weapon not a firearm, sexual assault and indecent assault / act of indecency / other sexual offences.

** **Property offences** include: break and enter dwelling, break and enter non-dwelling, motor vehicle theft, steal from motor vehicle, steal from retail store, steal from dwelling, steal from person, stock theft, other theft and fraud.

For further explanation of violent offences and property offences, see page 44, Note [7].

[#] For further explanation of rate calculation populations and the ratio to NSW rate, see page 44, Footnote 2 and Note [8].

**TABLE 1.2: TRENDS[^] IN RECORDED CRIMINAL INCIDENTS, VIOLENT AND PROPERTY OFFENCES
OVER THE 60 MONTHS TO DECEMBER 2018, GREATER SYDNEY STATISTICAL AREAS (SAs)**

Greater Sydney Statistical Area	Violent Offences*			Property Offences**		
	Annual percentage change over the last 24 months	Average annual percentage change over the last 60 months	Ratio [#] to NSW rate	Annual percentage change over the last 24 months	Average annual percentage change over the last 60 months	Ratio [#] to NSW rate
Baulkham Hills and Hawkesbury	Stable	Stable	0.4	Stable	-2.8%	0.5
Blacktown	Stable	Stable	1.4	Stable	2.1%	1.3
Central Coast	Stable	2.8%	1.2	Stable	Stable	0.9
City and Inner South	Stable	Stable	1.9	Stable	-6.4%	2.0
Eastern Suburbs	Stable	Stable	0.7	Stable	-5.1%	0.8
Inner South West	Stable	Stable	0.7	-10.2%	-8.2%	0.6
Inner West	Stable	Stable	0.5	Stable	-6.4%	0.8
North Sydney and Hornsby	Stable	1.6%	0.4	Stable	-3.1%	0.6
Northern Beaches	Stable	Stable	0.5	Stable	-1.6%	0.6
Outer South West	Stable	Stable	1.0	Stable	-1.8%	0.8
Outer West and Blue Mountains	Stable	Stable	1.2	Stable	Stable	1.1
Parramatta	Stable	Stable	0.9	Stable	-3.5%	1.0
Ryde	Stable	5.1%	0.4	Stable	Stable	0.7
South West	Stable	Stable	0.9	-7.8%	-4.4%	0.8
Sutherland	-12.6%	Stable	0.5	Stable	-4.7%	0.5

[^] For further explanation of trend results, see page 44, Notes [5] and [6].

* **Violent offences** include: murder, assault - domestic violence related, assault - non-domestic violence related, assault police, robbery without a weapon, robbery with a firearm, robbery with a weapon not a firearm, sexual assault and indecent assault / act of indecency / other sexual offences.

** **Property offences** include: break and enter dwelling, break and enter non-dwelling, motor vehicle theft, steal from motor vehicle, steal from retail store, steal from dwelling, steal from person, stock theft, other theft and fraud.

For further explanation of violent offences and property offences, see page 44, Note [7].

[#] For further explanation of rate calculation populations and the ratio to NSW rate, see page 44, Footnote 2 and Note [8].

TABLE 1.3: TRENDS^a IN RECORDED CRIMINAL INCIDENTS, VIOLENT AND PROPERTY OFFENCES, OVER THE 60 MONTHS TO DECEMBER 2018, NSW LOCAL GOVERNMENT AREAS (LGAs)

NSW LGAs	Violent Offences*			Property Offences*		
	Annual percentage change over the last 24 months	Average annual percentage change over the last 60 months	Ratio [#] to NSW rate	Annual percentage change over the last 24 months	Average annual percentage change over the last 60 months	Ratio [#] to NSW rate
Albury	ns	ns	1.5	ns	4.4	1.6
Armidale Regional	ns	ns	1.6	ns	ns	1.7
Ballina	ns	ns	0.8	ns	4.6	1.0
Balranald	ns	ns	.	ns	ns	.
Bathurst Regional	ns	ns	1.4	ns	-4.5	1.1
Bayside	ns	6.0	0.8	ns	-6.6	0.8
Bega Valley	ns	ns	0.8	ns	ns	0.6
Bellingen	ns	ns	0.8	20.9	ns	0.8
Berrigan	ns	ns	0.7	ns	ns	0.7
Blacktown	ns	1.5	1.4	ns	2.1	1.3
Bland	ns	ns	0.7	ns	ns	0.5
Blayney	ns	ns	0.8	ns	ns	0.7
Blue Mountains	ns	ns	0.8	22.6	ns	0.7
Bogan	ns	-11.2	.	ns	-6.8	.
Bourke	ns	-6.3	.	-26.4	-9.0	.
Brewarrina	ns	-10.9	.	ns	ns	.
Broken Hill	ns	ns	2.4	ns	5.1	1.7
Burwood	ns	ns	0.6	ns	-9.2	1.2
Byron	ns	ns	1.3	ns	-6.5	
Cabonne	50.0	ns	0.7	ns	ns	0.6
Camden	ns	11.4	0.7	ns	4.1	0.6
Campbelltown	ns	-2.1	1.3	ns	-2.1	1.1
Canada Bay	ns	ns	0.3	-16.8	-6.2	0.6
Canterbury-Bankstown	ns	-3.0	0.7	-13.6	-8.4	0.7
Carrathool	ns	ns	.	ns	14.5	.
Central Coast	ns	2.8	1.2	ns	ns	0.9
Central Darling	ns	ns	.	ns	ns	.
Cessnock	ns	ns	1.2	ns	ns	1.5
Clarence Valley	ns	ns	1.1	ns	-1.5	1.2
Cobar	ns	ns	2.3	ns	-18.5	1.0
Coffs Harbour	ns	ns	1.6	17.7	7.1	1.4
Coolamon	ns	ns	0.6	ns	ns	0.5
Coonamble	ns	ns	3.4	ns	ns	3.0
Cootamundra-Gundagai	ns	ns	1.4	ns	4.8	1.0
Cowra	ns	-5.5	1.4	ns	ns	1.0
Cumberland	ns	ns	0.9	ns	-3.5	0.9
Dubbo Regional	29.0	ns	2.4	ns	ns	2.2
Dungog	ns	ns	0.7	ns	ns	0.4
Edward River	ns	ns	1.3	ns	6.3	1.0
Eurobodalla	ns	ns	1.2	ns	ns	1.0
Fairfield	ns	ns	0.8	ns	-5.8	0.7
Federation	ns	ns	0.8	ns	-9.5	0.8
Forbes	ns	ns	1.6	ns	ns	1.3
Georges River	ns	ns	0.6	ns	-5.9	0.6
Gilgandra	ns	ns	1.9	ns	-10.8	1.4
Glen Innes Severn	-16.7	ns	1.8	-35.9	ns	0.9
Goulburn Mulwaree	ns	ns	1.1	ns	7.3	1.0
Greater Hume Shire	ns	ns	0.5	ns	ns	0.5
Griffith	ns	ns	1.5	ns	-9.7	1.3
Gunnedah	ns	ns	1.3	31.9	-6.5	1.4
Gwydir	ns	ns	1.0	ns	7.4	0.8
Hawkesbury	ns	-2.6	0.9	ns	-6.2	0.7
Hay	ns	ns	.	ns	ns	.
Hilltops	ns	ns	1.4	ns	ns	0.9
Hornsby	ns	ns	0.4	ns	ns	0.5
Hunters Hill	ns	ns	0.5	ns	ns	0.7
Inner West	ns	ns	0.7	ns	-5.4	0.9
Inverell	ns	ns	1.7	ns	12.4	1.5
Junee	ns	-8.4	0.8	ns	ns	0.6
Kempsey	ns	ns	1.8	20.8	ns	2.0
Kiama	ns	-9.0	0.3	ns	ns	0.5
Ku-ring-gai	ns	ns	0.2	ns	ns	0.4
Kyogle	52.2	8.2	1.5	ns	ns	0.6
Lachlan	ns	ns	2.0	ns	-16.6	1.1
Lake Macquarie	ns	ns	1.0	ns	ns	1.1

TABLE 1.3: TRENDS^a IN RECORDED CRIMINAL INCIDENTS, VIOLENT AND PROPERTY OFFENCES, OVER THE 60 MONTHS TO DECEMBER 2018, NSW LOCAL GOVERNMENT AREAS (LGAs)

NSW LGAs	Violent Offences*			Property Offences*		
	Annual percentage change over the last 24 months	Average annual percentage change over the last 60 months	Ratio [#] to NSW rate	Annual percentage change over the last 24 months	Average annual percentage change over the last 24 months	Ratio [#] to NSW rate
Lane Cove	ns	ns	0.3	ns	ns	0.6
Leeton	ns	ns	1.5	ns	ns	1.2
Lismore	ns	ns	1.5	ns	ns	1.2
Lithgow	ns	ns	1.3	-16.1	-15.3	0.9
Liverpool	ns	ns	0.9	-11.2	-4.6	0.9
Liverpool Plains	ns	ns	1.2	ns	ns	0.7
Lockhart	ns	.	0.6	ns	ns	0.8
Lord Howe Island
Maitland	10.3	7.4	1.3	ns	6.3	1.4
Mid-Coast	ns	ns	1.2	ns	ns	1.3
Mid-Western Regional	ns	ns	1.2	ns	-7.9	0.7
Moree Plains	-27.9	-10.3	2.8	-23.2	ns	3.3
Mosman	ns	ns	0.3	ns	-3.7	0.5
Murray River	65.9	ns	0.6	ns	ns	0.8
Murrumbidgee	ns	ns	1.4	ns	ns	0.7
Muswellbrook	ns	ns	1.6	ns	-5.0	1.3
Nambucca	39.3	9.0	1.9	38.7	10.8	1.7
Narrabri	ns	ns	1.5	ns	-8.0	1.1
Narrandera	ns	5.1	1.5	-54.4	ns	1.0
Narramine	ns	ns	2.3	ns	ns	2.1
Newcastle	ns	ns	1.3	ns	4.5	1.8
North Sydney	ns	ns	0.5	ns	-7.4	0.8
Northern Beaches	ns	ns	0.5	ns	-1.6	0.6
Oberon	ns	ns	1.1	ns	ns	0.9
Orange	ns	-4.2	1.6	16.4	-5.3	1.6
Parkes	ns	ns	1.8	ns	-4.8	1.0
Parramatta	ns	ns	0.8	ns	-2.6	1.1
Penrith	ns	2.2	1.3	ns	2.0	1.3
Port Macquarie-Hastings	ns	ns	0.9	ns	ns	0.9
Port Stephens	ns	ns	1.1	ns	ns	0.9
Queanbeyan-Palerang Regional	ns	ns	0.7	ns	ns	0.9
Randwick	ns	5.0	0.7	ns	-1.8	0.8
Richmond Valley	ns	ns	1.4	ns	-5.9	1.0
Ryde	ns	6.2	0.5	-14.7	-3.8	0.7
Shellharbour	ns	-4.1	0.8	ns	ns	0.8
Shoalhaven	ns	ns	1.1	ns	-6.5	0.9
Singleton	ns	3.9	1.0	ns	-5.9	1.1
Snowy Monaro Regional	ns	ns	0.8	ns	ns	0.6
Snowy Valleys	ns	ns	1.1	ns	12.2	1.1
Strathfield	ns	ns	0.8	ns	-8.0	1.0
Sutherland Shire	-12.6	ns	0.5	ns	-4.7	0.5
Sydney	ns	ns	2.3	ns	-6.9	2.5
Tamworth Regional	ns	ns	1.5	ns	3.8	1.5
Temora	ns	ns	0.9	ns	ns	0.6
Tenterfield	ns	ns	1.2	ns	ns	1.1
The Hills Shire	ns	ns	0.3	ns	-2.7	0.6
Tweed	ns	-3.0	0.8	17.3	ns	0.9
Unincorporated Far West
Upper Hunter Shire	ns	8.1	0.8	ns	ns	0.9
Upper Lachlan Shire	ns	ns	0.4	ns	ns	0.4
Uralla	ns	ns	0.8	ns	ns	0.5
Wagga Wagga	ns	4.8	1.6	ns	ns	1.7
Walcha	ns	11.2	1.7	ns	ns	0.5
Walgett	ns	ns	4.3	-20.9	-5.8	1.8
Warren	ns	ns	.	ns	ns	.
Warrumbungle Shire	ns	ns	1.3	ns	ns	0.8
Waverley	ns	ns	0.8	ns	-5.4	1.1
Weddin	ns	ns	0.5	ns	ns	0.5
Wentworth	ns	ns	2.2	-32.6	-10.5	1.0
Willoughby	ns	4.8	0.4	ns	ns	1.0
Wingecarribee	-6.3	ns	0.6	ns	-6.3	0.5
Wollondilly	ns	ns	0.6	ns	ns	0.4
Wollongong	ns	-3.6	0.9	ns	-2.3	1.0
Woollahra	ns	ns	0.5	-17.6	-11.5	0.6
Yass Valley	ns	ns	0.6	ns	ns	0.4
NSW	ns	ns	1.0	ns	-2.3	1.0

^a For further explanation of trend results, see page 44, Notes [5] and [6].

* For further explanation of violent offences and property offences, see page 44, Note [7].

For further explanation of rate calculation populations and the ratio to NSW rate, see page 44, Footnote 2 and Note [8].

Sydney LGA can be considered a special case since the population used to calculate the rate is much lower than the population using the area for work and entertainment. This will be reflected in higher incident rates.

SECTION 2:
OVERVIEW OF TRENDS
IN RECORDED CRIME
BY OFFENCE TYPE
NSW

**TABLE 2.1: TRENDS[^] IN RECORDED CRIMINAL INCIDENTS FOR MAJOR OFFENCES
OVER THE 60 MONTHS TO DECEMBER 2018, NSW**

Offence category	Trend result and annual percentage change over the last 24 months	Trend result and average annual percentage change over the last 60 months
Murder *	Stable	Down by 7.9%
Domestic violence related assault	Stable	Stable
Non-domestic violence related assault	Stable	Stable
Sexual assault	Stable	Up by 3.9%
Indecent assault, act of indecency and other sexual offences	Stable	Up by 4.5%
Robbery without a weapon	Stable	Down by 6.3%
Robbery with a firearm	Stable	Down by 15.0%
Robbery with a weapon not a firearm	Stable	Down by 8.6%
Break and enter dwelling	Down by 4.7%	Down by 6.0%
Break and enter non-dwelling	Stable	Down by 5.5%
Motor vehicle theft	Stable	Down by 3.2%
Steal from motor vehicle	Stable	Down by 2.8%
Steal from retail store	Stable	Up by 4.7%
Steal from dwelling	Stable	Down by 3.8%
Steal from person	Down by 7.2%	Down by 8.9%
Fraud	Stable	Stable
Malicious damage to property	Stable	Down by 3.8%

[^] For further explanation of trend results, see page 44, Notes [5] and [6].

* For murder, the trend test is applied to the monthly number of recorded victims rather than criminal incidents.

TABLE 2.2: PERIODIC TRENDS[^] IN RECORDED CRIMINAL INCIDENTS FOR MAJOR OFFENCES, OVER THE 60 MONTHS TO DECEMBER 2018, NSW

Offence category	Trend result and annual percentage change				
	Jan 2013 - Dec 2014	Jan 2014 - Dec 2015	Jan 2015 - Dec 2016	Jan 2016 - Dec 2017	Jan 2017 - Dec 2018
Murder *	Stable	Stable	Stable	Stable	Stable
Domestic violence related assault	Stable	Stable	Stable	Stable	Stable
Non-domestic violence related assault	Stable	Stable	Stable	Stable	Stable
Sexual assault	Stable	Stable	Stable	13.5%	Stable
Indecent assault, act of indecency and other sexual offences	Stable	Stable	Stable	Stable	Stable
Robbery without a weapon	-21.5%	-19.1%	-13.1%	Stable	Stable
Robbery with a firearm	Stable	-40.5%	Stable	Stable	Stable
Robbery with a weapon not a firearm	-14.1%	-20.5%	-13.0%	Stable	Stable
Break and enter dwelling	Stable	-6.9%	-6.0%	-6.4%	-4.7%
Break and enter non-dwelling	-12.4%	-6.9%	Stable	-9.7%	Stable
Motor vehicle theft	Stable	Stable	-7.1%	Stable	Stable
Steal from motor vehicle	-4.6%	-6.5%	Stable	Stable	Stable
Steal from retail store	-5.8%	7.2%	6.6%	4.3%	Stable
Steal from dwelling	3.5%	Stable	Stable	Stable	Stable
Steal from person	-14.4%	Stable	-13.3%	-8.2%	-7.2%
Fraud	Stable	Stable	-2.2%	Stable	Stable
Malicious damage to property	-10.6%	Stable	Stable	Stable	Stable

[^] For further explanation of trend results, see page 44, Notes [5] and [6].

* For murder, the trend test is applied to the monthly number of recorded victims rather than criminal incidents.

TABLE 2.3: NUMBER AND TRENDS[^] IN RECORDED CRIMINAL INCIDENTS FOR 62 OFFENCES OVER THE 24 MONTHS TO DECEMBER 2018, NSW

Offence Category		Number of recorded criminal incidents		Trend [^] over the last 24 months	
		over the 12 months to December 2017	over the 12 months to December 2018	Trend test result	Percentage change
Homicide	Murder*	53	69	Stable	
	Attempted murder	17	19	.	
	Murder accessory, conspiracy	3	1	.	
	Manslaughter*	8	8	.	
Assault	Domestic violence related assault	28,461	29,572	Stable	
	Non-domestic violence related assault	32,207	31,698	Stable	
	Assault Police	2,332	2,458	Stable	
Sexual offences	Sexual assault	5,949	5,816	Stable	
	Indecent assault, act of indecency and other sexual offences	7,578	7,867	Stable	
Abduction and kidnapping		219	199	Stable	
Robbery	Robbery without a weapon	1,449	1,492	Stable	
	Robbery with a firearm	131	156	Stable	
	Robbery with a weapon not a firearm	850	837	Stable	
Blackmail and extortion		87	114	Stable	
Intimidation, stalking and harassment		30,608	31,999	Up	4.5%
Other offences against the person		563	841	Stable	
Theft	Break and enter dwelling	27,811	26,500	Down	-4.7%
	Break and enter non-dwelling	10,574	10,207	Stable	
	Receiving or handling stolen goods	7,505	7,858	Stable	
	Motor vehicle theft	13,195	13,061	Stable	
	Steal from motor vehicle	39,073	38,083	Stable	
	Steal from retail store	24,554	24,784	Stable	
	Steal from dwelling	19,550	19,212	Stable	
	Steal from person	4,556	4,227	Down	-7.2%
	Stock theft	466	422	Stable	
	Fraud	49,755	51,231	Stable	
Other theft	27,469	26,795	Stable		
Arson		5,896	5,332	Stable	
Malicious damage to property		61,185	58,442	Stable	
Drug offences	Possession and/or use of cocaine	1,908	2,348	Up	23.1%
	Possession and/or use of narcotics	943	1,040	Stable	
	Possession and/or use of cannabis	18,139	17,149	Stable	
	Possession and/or use of amphetamines	6,497	7,129	Up	9.7%
	Possession and/or use of ecstasy	2,674	2,845	Stable	
	Possession and/or use of other drugs	4,264	5,009	Up	17.5%
	Dealing, trafficking in cocaine	783	749	Stable	
	Dealing, trafficking in narcotics	348	335	Stable	
	Dealing, trafficking in cannabis	737	978	Stable	
	Dealing, trafficking in amphetamines	1,912	1,714	Stable	
	Dealing, trafficking in ecstasy	739	592	Stable	
	Dealing, trafficking in other drugs	331	444	Up	34.1%
	Cultivating cannabis	1,110	1,110	Stable	
	Manufacture drug	63	67	Stable	
Importing drugs	76	63	Stable		
Other drug offences	5,112	5,705	Up	11.6%	
Prohibited and regulated weapons offences		12,591	14,050	Up	11.6%
Disorderly conduct	Trespass	9,862	9,966	Stable	
	Offensive conduct	5,144	4,689	Stable	
	Offensive language	3,249	2,720	Down	-16.3%
	Criminal intent	2,211	2,305	Stable	
Betting and gaming offences		77	114	Stable	
Liquor offences		11,126	11,433	Stable	
Pornography offences		600	662	Stable	
Prostitution offences		72	27	Down	-62.5%
Against justice procedures	Escape custody	168	165	Stable	
	Breach Apprehended Violence Order	14,726	16,015	Up	8.8%
	Breach bail conditions	41,829	42,419	Stable	
	Fail to appear	578	534	Down	-7.6%
	Resist or hinder officer	6,193	6,138	Stable	
Other offences against justice procedures		573	558	Stable	
Transport regulatory offences		129,652	114,388	Down	-11.8%
Other offences		15,285	14,755	Stable	

[^] For further explanation of trend results, see page 44, Notes [5] and [6].

* For murder and manslaughter incidents, the trend test is applied to the monthly number of recorded victims rather than criminal incidents.

TABLE 2.4: NUMBER AND OUTCOME[^] OF 24-MONTH TREND TESTS FOR MAJOR OFFENCES, NSW LOCAL GOVERNMENT AREAS (LGAs), ALL REPORTS 2010 TO DECEMBER 2018

Year	Final month for 24-month trend test	Number of LGAs	Number of trend tests	Stable trends (%)	Downward trends (%)	Upward trends (%)
2010	March	130	1,255	82.0	11.9	6.1
	June	130	1,254	83.0	12.4	4.6
	September	130	1,265	81.5	14.0	4.5
	December	130	1,260	86.4	9.0	4.5
2011	March	130	1,250	86.0	8.2	5.8
	June	130	1,244	86.4	8.8	4.7
	September	130	1,251	84.9	11.5	3.6
	December	130	1,241	86.0	9.1	4.9
2012	March	130	1,250	86.2	5.7	8.2
	June	130	1,236	86.8	7.3	5.9
	September	130	1,240	85.9	9.5	4.6
	December	130	1,246	85.6	7.9	6.6
2013	March	130	1,238	85.2	6.9	7.8
	June	130	1,232	84.9	8.6	6.5
	September	130	1,240	83.5	11.0	5.6
	December	130	1,236	84.4	11.1	4.5
2014	March	130	1,228	84.0	9.9	6.1
	June	130	1,228	82.5	13.7	3.8
	September	130	1,227	80.0	17.2	2.9
	December	130	1,227	85.8	9.9	4.2
2015	March	130	1,223	86.2	9.0	4.8
	June	130	1,228	86.7	9.6	3.7
	September	130	1,221	86.2	10.8	2.9
	December	130	1,224	87.6	8.2	4.2
2016	March	130	1,225	85.7	6.3	8.0
	June	130	1,220	83.9	9.3	6.8
	September	130	1,221	83.2	11.6	5.2
	December	130	1,219	87.2	7.2	5.6
2017	March	130	1,225	88.0	5.6	6.4
	June	130	1,216	88.7	5.8	5.4
	September	130	1,224	84.7	11.2	4.1
	December	130	1,223	86.8	9.1	4.2
2018	March	130	1,223	87.3	7.0	5.6
	June	130	1,218	86.6	8.3	5.1
	September	130	1,219	86.0	10.7	3.4
	December	130	1,218	88.0	6.5	5.5

[^] This table summarises the aggregate outcomes of statistical tests for significant upward or downward trends in the number of recorded criminal incidents in major offence categories over a 24-month period across all NSW LGAs with a population of 3,000 or more. The trend test used is Kendall's rank-order correlation test. A trend test was not performed if there were fewer than 20 incidents in either of the two years for the period in question, hence no trend tests for **murder** were calculated for this table. These tests were carried out on 17 major offence categories.

FIGURE 2.1A: NUMBER OF NSW LGAs WITH SIGNIFICANT UPWARD TRENDS[^], MAJOR OFFENCES, JAN 16 TO DEC 17 and JAN 17 TO DEC 18

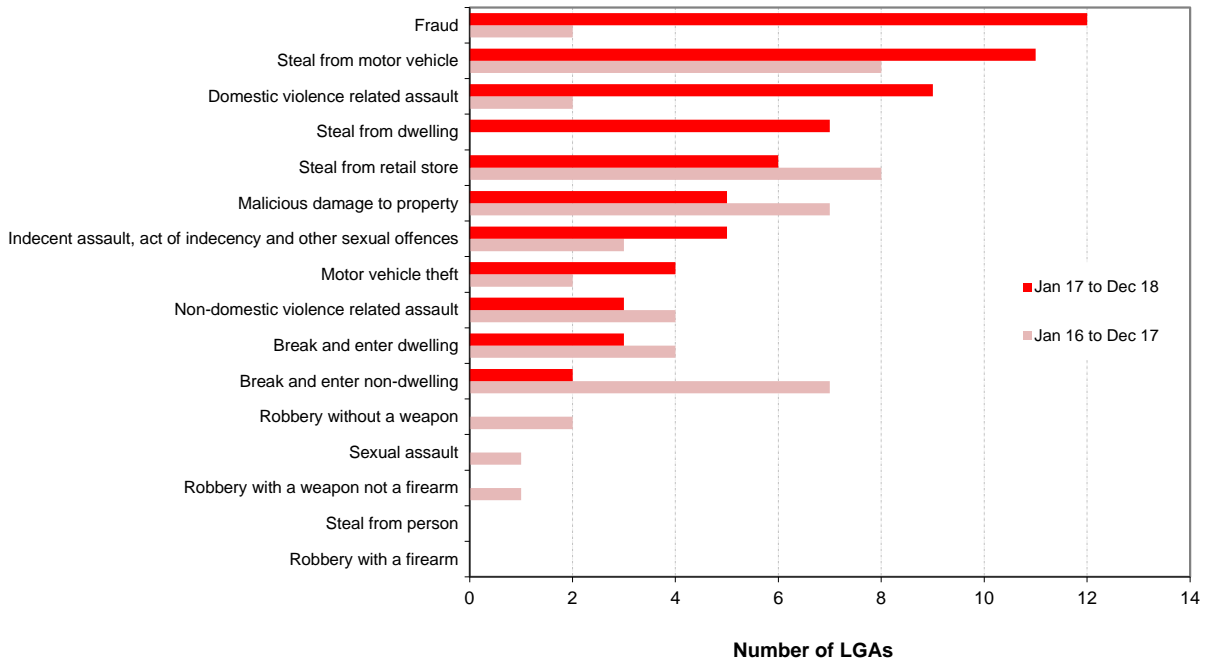
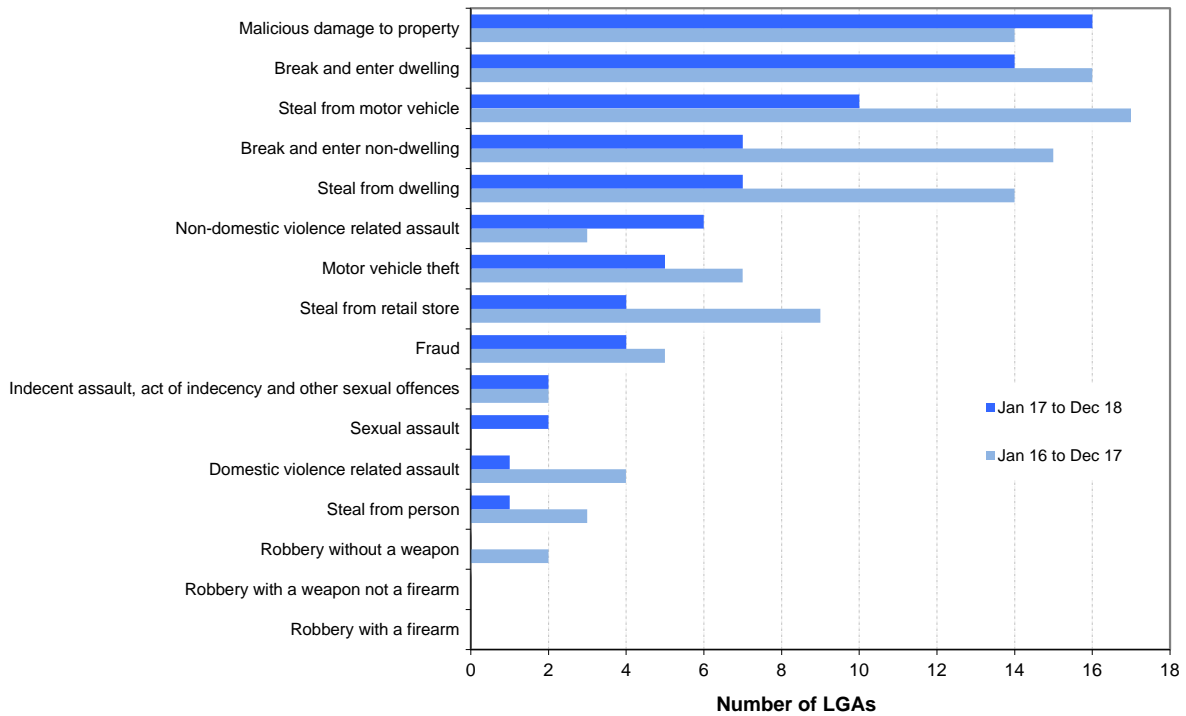


FIGURE 2.1B: NUMBER OF NSW LGAs WITH SIGNIFICANT DOWNWARD TRENDS[^], MAJOR OFFENCES, JAN 16 TO DEC 17 and JAN 17 TO DEC 18



[^] For further explanation of trend results, see page 44, Notes [5] and 6.

SECTION 3:

**TRENDS, RATE COMPARISONS AND
RECORDED CRIMINAL INCIDENTS
FOR MAJOR OFFENCES
NSW REGIONS AND LGAS**

TABLE 3.1A: TRENDS[^] IN RECORDED CRIMINAL INCIDENTS FOR MAJOR OFFENCES OVER THE 24 MONTHS TO DECEMBER 2018, NSW SAs

NSW Statistical Area	Murder *	Domestic violence related assault	Non-domestic violence related assault	Sexual assault	Indecent assault, act of indecency and other sexual offences	Robbery without a weapon	Robbery with a firearm	Robbery with a weapon not a firearm	Break and enter dwelling	Break and enter non-dwelling	Motor vehicle theft	Steal from motor vehicle	Steal from retail store	Steal from dwelling	Steal from person	Fraud	Malicious damage to property
Greater Sydney	ns	ns	ns	ns	ns	ns	ns	ns	-8.2	ns	-4.5	ns	ns	ns	-7.1	ns	ns
Capital Region	.	ns	ns	ns	ns	.	.	.	ns	ns	ns	ns	ns	ns	ns	ns	ns
Central West	.	ns	ns	ns	ns	.	.	.	ns	ns	ns	ns	ns	ns	ns	ns	ns
Coffs Harbour - Grafton	.	ns	ns	ns	ns	.	.	.	ns	ns	23.2	37.8	40.0	ns	ns	32.1	ns
Far West and Orana	.	28.9	ns	ns	ns	.	.	.	ns	ns	ns	ns	ns	ns	ns	ns	ns
Hunter Valley excluding Newcastle	.	ns	ns	ns	ns	ns	.	.	ns	ns	ns	-23.8	27.3	9.9	ns	ns	ns
Illawarra	.	ns	ns	ns	ns	ns	.	ns	ns	ns	ns	ns	ns	-11.9	ns	23.9	ns
Mid North Coast	.	ns	ns	ns	ns	ns	.	ns	28.3	ns	ns	24.2	ns	19.4	ns	49.9	ns
Murray	.	ns	ns	ns	ns	.	.	.	ns	ns	ns	ns	48.3	ns	ns	ns	-15.0
New England and North West	.	ns	ns	ns	ns	ns	.	-22.6	ns	-29.1	ns	ns	ns	ns	ns	ns	ns
Newcastle and Lake Macquarie	.	ns	ns	ns	ns	ns	.	ns	ns	ns	ns	-5.3	ns	ns	ns	ns	ns
Richmond - Tweed	.	ns	ns	ns	ns	ns	.	.	ns	ns	ns	18.4	ns	ns	ns	ns	ns
Riverina	.	ns	ns	ns	54.1	.	.	.	ns	ns	ns	-20.9	ns	ns	ns	20.9	ns
Southern Highlands and Shoalhaven	.	ns	ns	-25.7	ns	.	.	.	ns	ns	ns	ns	14.6	ns	.	11.8	ns
NSW	ns	ns	ns	ns	ns	ns	ns	ns	-4.7	ns	ns	ns	ns	ns	-7.2	ns	ns

[^] For further explanation of **trend results**, see page 44, Notes [5] and [6].

* The trend test for Greater Sydney and NSW on the offence of murder is for the number of victims, not incidents.

TABLE 3.1B: RATIO TO NSW RATE[^] OF RECORDED CRIMINAL INCIDENTS PER 100,000 POPULATION FOR MAJOR OFFENCES OVER THE 12 MONTHS TO DECEMBER 2018, NSW SAs

NSW Statistical Area	Murder *	Domestic violence related assault	Non-domestic violence related assault	Sexual assault	Indecent assault, act of indecency and other sexual offences	Robbery without a weapon	Robbery with a firearm	Robbery with a weapon not a firearm	Break and enter dwelling	Break and enter non-dwelling	Motor vehicle theft	Steal from motor vehicle	Steal from retail store	Steal from dwelling	Steal from person	Fraud	Malicious damage to property
Greater Sydney	0.8	0.9	0.9	0.8	0.8	1.1	1.0	1.0	0.8	0.7	0.8	0.9	1.0	0.8	1.2	1.1	0.8
Capital Region	1.0	0.9	0.9	1.0	1.2	0.3	0.9	0.6	0.9	1.0	0.9	0.9	0.8	1.0	0.2	0.5	1.0
Central West	0.5	1.3	1.3	1.6	1.5	0.7	0.2	0.8	1.4	1.6	1.1	1.1	0.8	1.3	0.6	0.8	1.5
Coffs Harbour - Grafton	0.8	1.4	1.3	1.5	1.5	1.1	1.1	1.1	1.4	1.8	1.4	1.3	1.0	1.4	0.7	1.0	1.3
Far West and Orana	1.0	3.4	2.1	2.1	2.2	0.9	0.9	2.1	3.4	4.2	2.0	2.3	1.5	2.3	1.3	0.9	2.9
Hunter Valley excluding Newcastle	0.8	1.4	1.0	1.5	1.3	0.5	1.1	0.7	1.3	1.8	1.6	1.0	1.1	1.6	0.6	0.9	1.3
Illawarra	1.5	0.8	0.8	1.0	0.8	0.8	1.8	1.4	0.9	0.9	1.2	1.2	1.1	0.9	0.5	0.7	1.0
Mid North Coast	1.6	1.3	1.1	1.6	1.4	1.2	0.9	1.1	1.7	2.5	1.3	1.1	0.9	1.8	0.7	0.9	1.3
Murray	3.8	1.2	1.2	1.3	1.3	1.0	1.7	0.9	1.3	2.0	1.2	1.3	1.2	1.5	0.6	0.6	1.3
New England and North West	0.6	1.7	1.5	1.8	1.6	1.0	0.0	1.2	2.5	2.0	1.4	1.7	1.3	1.9	0.6	0.8	1.9
Newcastle and Lake Macquarie	1.5	1.0	1.2	1.3	1.3	0.8	1.5	1.5	1.3	1.4	1.8	1.8	1.4	1.4	1.0	1.3	1.4
Richmond - Tweed	1.4	1.0	1.1	1.3	1.3	0.5	0.6	0.7	1.0	1.3	1.2	1.1	0.7	1.2	0.8	0.7	1.1
Riverina	1.4	1.5	1.2	1.6	1.6	0.5	0.6	0.8	2.2	2.0	1.5	1.3	1.1	1.5	0.6	0.7	1.6
Southern Highlands and Shoalhaven	1.5	0.9	0.8	0.9	1.3	0.5	0.3	0.4	0.8	0.9	0.7	0.8	0.9	0.8	0.4	0.6	1.0
NSW	1.0	1.0	1.0	1.0	1.0	1.0	1.0	1.0	1.0	1.0	1.0	1.0	1.0	1.0	1.0	1.0	1.0

[^] For further explanation of **rate calculation populations** and the **ratio to NSW rate**, see page 44, Footnote 2 and Note [8].

* The rate calculations on the offence of murder is for the number of victims, not incidents.

TABLE 3.1C: NUMBER OF RECORDED CRIMINAL INCIDENTS FOR MAJOR OFFENCES, OVER THE 12 MONTHS TO DECEMBER 2018, NSW SAs

<i>NSW Statistical Area</i>	Murder *	Domestic violence related assault	Non-domestic violence related assault	Sexual assault	Indecent assault, act of indecency and other sexual offences	Robbery without a weapon	Robbery with a firearm	Robbery with a weapon not a firearm	Break and enter dwelling	Break and enter non-dwelling	Motor vehicle theft	Steal from motor vehicle	Steal from retail store	Steal from dwelling	Steal from person	Fraud	Malicious damage to property
Greater Sydney	37	16,644	17,740	2,967	4,161	1,115	104	537	13,138	4,333	7,025	21,204	15,588	9,963	3,289	36,091	30,842
Capital Region	2	732	791	175	263	12	4	15	715	297	319	930	566	559	21	802	1,704
Central West	1	1,072	1,123	251	307	29	1	18	1,029	433	386	1,084	565	689	65	1,133	2,390
Coffs Harbour - Grafton	1	733	737	159	213	28	3	17	659	323	319	872	441	490	49	950	1,331
Far West and Orana	1	1,505	991	182	261	19	2	26	1,350	631	382	1,307	539	642	80	693	2,493
Hunter Valley excluding Newcastle	2	1,400	1,074	294	358	26	6	19	1,223	621	718	1,338	984	1,054	89	1,564	2,558
Illawarra	4	901	982	216	250	47	11	45	939	378	604	1,800	1,085	668	76	1,461	2,227
Mid North Coast	3	1,048	1,003	255	314	48	4	25	1,264	710	465	1,128	628	984	83	1,279	2,082
Murray	4	531	561	118	157	22	4	11	533	312	228	733	467	444	36	500	1,140
New England and North West	1	1,211	1,115	244	290	35	0	24	1,576	487	435	1,539	790	865	61	917	2,564
Newcastle and Lake Macquarie	5	1,402	1,783	365	473	53	11	61	1,636	659	1,107	3,227	1,615	1,249	194	3,256	3,924
Richmond - Tweed	3	938	1,108	245	316	25	3	19	825	431	495	1,339	517	717	102	1,153	2,029
Riverina	2	928	797	186	262	16	2	13	1,180	417	400	991	560	590	51	781	1,944
Southern Highlands and Shoalhaven	2	522	520	107	194	15	1	6	433	172	177	590	439	298	30	635	1,130
NSW	69	29,572	31,698	5,816	7,867	1,492	156	837	26,500	10,207	13,061	38,083	24,784	19,212	4,227	51,231	58,442

* For murder the count given is for the number of victims, not incidents.

TABLE 3.1D: NUMBER OF RECORDED CRIMINAL INCIDENTS FOR MAJOR OFFENCES, OVER THE 12 MONTHS TO DECEMBER 2017, NSW SAs

<i>NSW Statistical Area</i>	Murder *	Domestic violence related assault	Non-domestic violence related assault	Sexual assault	Indecent assault, act of indecency and other sexual offences	Robbery without a weapon	Robbery with a firearm	Robbery with a weapon not a firearm	Break and enter dwelling	Break and enter non-dwelling	Motor vehicle theft	Steal from motor vehicle	Steal from retail store	Steal from dwelling	Steal from person	Fraud	Malicious damage to property
Greater Sydney	32	16,143	18,074	3,039	4,122	1,122	91	568	14,304	4,573	7,357	22,275	15,880	10,252	3,541	36,466	31,726
Capital Region	1	713	842	224	227	14	0	6	598	294	243	896	507	476	22	834	1,859
Central West	4	1,076	1,106	264	323	18	3	15	1,168	462	386	1,066	559	742	66	999	2,561
Coffs Harbour - Grafton	0	737	790	159	204	17	1	21	610	346	259	633	315	551	71	719	1,351
Far West and Orana	0	1,168	1,023	215	249	18	1	16	1,403	490	407	1,203	544	623	66	637	2,305
Hunter Valley excluding Newcastle	0	1,340	1,089	280	356	24	6	24	1,307	592	802	1,757	773	959	76	1,385	2,703
Illawarra	0	928	1,063	219	244	55	6	37	985	386	530	1,769	1,168	758	93	1,179	2,476
Mid North Coast	1	946	950	238	270	30	2	26	985	652	421	908	642	824	83	853	2,241
Murray	2	480	551	110	154	15	2	3	592	291	248	902	315	445	25	561	1,341
New England and North West	3	1,165	1,313	244	274	38	5	31	1,602	687	454	1,365	731	981	73	941	3,029
Newcastle and Lake Macquarie	2	1,531	1,758	385	507	45	9	57	1,643	735	1,068	3,408	1,593	1,294	251	2,870	4,266
Richmond - Tweed	4	878	1,179	210	270	28	4	15	803	387	452	1,131	553	672	118	1,085	2,039
Riverina	2	907	867	159	170	13	0	22	1,328	466	383	1,253	591	681	54	646	2,027
Southern Highlands and Shoalhaven	0	441	504	144	179	8	1	9	483	211	184	505	383	292	17	568	1,175
NSW	53	28,461	32,207	5,949	7,578	1,449	131	850	27,811	10,574	13,195	39,073	24,554	19,550	4,556	49,755	61,185

* For murder the count given is for the number of victims, not incidents.

TABLE 3.2A: TRENDS[^] IN RECORDED CRIMINAL INCIDENTS FOR MAJOR OFFENCES OVER THE 24 MONTHS TO DECEMBER 2018, GREATER SYDNEY SAs

Greater Sydney Statistical Area	Murder *	Domestic violence related assault	Non-domestic violence related assault	Sexual assault	Indecent assault, act of indecency and other sexual offences	Robbery without a weapon	Robbery with a firearm	Robbery with a weapon not a firearm	Break and enter dwelling	Break and enter non-dwelling	Motor vehicle theft	Steal from motor vehicle	Steal from retail store	Steal from dwelling	Steal from person	Fraud	Malicious damage to property
Baulkham Hills and Hawkesbury	.	ns	ns	ns	59.5	.	.	.	ns	ns	ns	ns	ns	ns	ns	ns	ns
Blacktown	.	ns	ns	ns	ns	ns	.	ns	ns	39.9	ns	ns	ns	ns	ns	ns	ns
Central Coast	.	ns	ns	ns	ns	ns	.	ns	ns	ns	ns	ns	ns	ns	ns	ns	ns
City and Inner South	.	ns	ns	ns	ns	ns	.	ns	ns	ns	ns	ns	-9.0	ns	ns	ns	ns
Eastern Suburbs	.	ns	ns	ns	ns	ns	.	.	-22.9	-32.6	ns	ns	ns	-18.8	ns	ns	ns
Inner South West	.	ns	ns	ns	ns	ns	.	ns	ns	ns	-3.9	-15.4	-10.3	ns	ns	ns	ns
Inner West	.	-16.4	ns	ns	ns	ns	.	ns	-17.6	ns	ns	ns	ns	ns	ns	ns	-12.5
North Sydney and Hornsby	.	ns	-15.3	ns	ns	ns	.	.	ns	ns	-10.2	-22.1	ns	-14.5	-19.2	ns	ns
Northern Beaches	.	ns	ns	ns	ns	ns	.	.	ns	ns	-13.6	ns	ns	ns	ns	ns	ns
Outer South West	.	ns	ns	ns	ns	ns	.	ns	ns	ns	ns	ns	ns	ns	ns	ns	ns
Outer West and Blue Mountains	.	ns	ns	ns	ns	ns	.	ns	ns	ns	ns	ns	ns	ns	ns	ns	ns
Parramatta	.	ns	ns	ns	ns	-26.6	.	ns	ns	ns	ns	ns	ns	ns	ns	ns	ns
Ryde	.	ns	ns	ns	ns	.	.	.	-19.0	ns	ns	ns	ns	ns	ns	ns	-18.0
South West	.	ns	ns	ns	ns	ns	.	ns	-23.0	ns	ns	ns	ns	ns	ns	-13.3	ns
Sutherland	.	ns	ns	-46.1	ns	.	.	.	ns	ns	ns	ns	ns	ns	ns	ns	ns

[^] For further explanation of **trend results**, see page 44, Notes [5] and [6].

TABLE 3.2B: RATIO TO NSW RATE[^] OF RECORDED CRIMINAL INCIDENTS PER 100,000 POPULATION FOR MAJOR OFFENCES OVER THE 12 MONTHS TO DECEMBER 2018, GREATER SYDNEY SAs

Greater Sydney Statistical Area	Murder *	Domestic violence related assault	Non-domestic violence related assault	Sexual assault	Indecent assault, act of indecency and other sexual offences	Robbery without a weapon	Robbery with a firearm	Robbery with a weapon not a firearm	Break and enter dwelling	Break and enter non-dwelling	Motor vehicle theft	Steal from motor vehicle	Steal from retail store	Steal from dwelling	Steal from person	Fraud	Malicious damage to property
Baulkham Hills and Hawkesbury	0.5	0.4	0.3	0.5	0.6	0.4	0.4	0.1	0.6	0.5	0.4	0.5	0.4	0.5	0.3	0.7	0.4
Blacktown	1.3	1.6	1.2	1.1	1.1	2.4	1.7	2.0	1.3	0.9	1.3	1.7	1.2	1.1	1.3	1.5	1.3
Central Coast	0.3	1.3	1.1	1.1	1.2	0.7	1.0	0.8	0.9	0.9	1.2	0.9	0.8	0.9	0.8	1.0	1.1
City and Inner South	1.0	1.0	2.6	1.3	1.6	3.6	1.7	2.2	0.9	1.3	1.0	1.1	2.9	1.6	6.6	2.4	1.4
Eastern Suburbs	1.2	0.6	0.9	0.6	0.6	0.6	0.5	0.3	0.6	0.3	0.7	0.7	1.0	0.8	1.2	1.0	0.7
Inner South West	1.5	0.8	0.6	0.6	0.5	1.0	1.1	0.9	0.6	0.4	0.8	0.7	0.5	0.5	0.5	0.9	0.7
Inner West	0.4	0.4	0.6	0.5	0.6	1.0	0.6	0.9	0.7	0.6	0.6	0.7	0.7	0.7	1.0	1.2	0.6
North Sydney and Hornsby	0.0	0.3	0.3	0.5	0.5	0.6	0.1	0.5	0.6	0.5	0.3	0.4	0.9	0.6	0.6	0.8	0.5
Northern Beaches	0.4	0.4	0.6	0.5	0.5	0.5	0.4	0.4	0.4	0.5	0.5	0.6	0.7	0.6	0.4	0.7	0.6
Outer South West	0.8	1.3	0.7	1.3	1.1	0.8	1.5	1.2	0.7	0.6	0.9	0.9	1.2	0.8	0.6	0.8	0.9
Outer West and Blue Mountains	0.4	1.4	1.0	1.3	1.2	1.1	0.8	1.1	1.1	1.0	1.2	1.2	1.0	1.1	1.0	1.2	1.2
Parramatta	1.2	1.0	0.9	0.7	0.7	1.4	1.8	1.3	1.0	0.7	1.0	1.1	0.8	0.8	1.3	1.2	0.7
Ryde	2.3	0.4	0.4	0.5	0.6	0.4	0.8	0.3	0.7	0.5	0.4	0.5	0.7	0.5	0.6	1.0	0.5
South West	0.8	1.0	0.7	0.8	0.8	1.3	1.6	1.4	0.7	0.5	1.1	0.9	0.8	0.7	0.8	1.0	0.7
Sutherland	0.0	0.5	0.6	0.4	0.5	0.3	0.2	0.1	0.4	0.3	0.5	0.5	0.8	0.6	0.4	0.6	0.7

[^] For further explanation of **rate calculation populations** and the **ratio to NSW rate**, see page 44, Footnote 2 and Note [8].

* The rate calculations on the offence of murder is for the number of victims, not incidents.

TABLE 3.2C: NUMBER OF RECORDED CRIMINAL INCIDENTS FOR MAJOR OFFENCES, OVER THE 12 MONTHS TO DECEMBER 2018, GREATER SYDNEY SAs

Greater Sydney Statistical Area	Murder *	Domestic violence related assault	Non-domestic violence related assault	Sexual assault	Indecent assault, act of indecency and other sexual offences	Robbery without a weapon	Robbery with a firearm	Robbery with a weapon not a firearm	Break and enter dwelling	Break and enter non-dwelling	Motor vehicle theft	Steal from motor vehicle	Steal from retail store	Steal from dwelling	Steal from person	Fraud	Malicious damage to property
Baulkham Hills and Hawkesbury	1	342	314	97	134	18	2	3	477	151	171	591	299	307	33	1,040	661
Blacktown	4	2,194	1,702	286	394	161	12	78	1,551	438	788	2,942	1,376	959	255	3,634	3,460
Central Coast	1	1,661	1,476	277	408	46	7	30	1,015	415	662	1,537	883	724	146	2,229	2,899
City and Inner South	3	1,353	3,698	343	568	238	12	82	1,028	599	575	1,835	3,211	1,379	1,246	5,447	3,625
Eastern Suburbs	3	625	1,028	139	183	35	3	10	545	116	352	936	939	598	181	1,877	1,503
Inner South West	8	1,876	1,579	255	314	120	13	57	1,184	335	834	1,985	884	759	165	3,388	2,969
Inner West	1	496	712	117	201	58	4	29	742	240	324	1,047	709	574	175	2,396	1,324
North Sydney and Hornsby	0	498	608	152	231	53	1	24	917	268	229	910	1,279	619	135	2,291	1,618
Northern Beaches	1	447	602	106	143	24	2	11	391	157	209	779	570	421	65	1,238	1,193
Outer South West	2	1,328	834	264	290	43	8	35	683	232	398	1,201	1,026	527	83	1,400	1,892
Outer West and Blue Mountains	1	1,650	1,310	305	375	65	5	37	1,156	418	612	1,881	1,050	866	175	2,469	2,869
Parramatta	5	1,736	1,732	256	337	124	17	68	1,631	451	791	2,597	1,283	965	338	3,830	2,589
Ryde	4	322	327	66	115	14	3	7	481	134	127	473	440	257	64	1,219	699
South West	3	1,661	1,277	242	354	104	14	63	1,021	294	757	1,912	1,077	698	183	2,735	2,389
Sutherland	0	455	541	62	114	12	1	3	316	85	196	578	562	310	45	898	1,152

* For murder the count given is for the number of victims, not incidents.

TABLE 3.2D: NUMBER OF RECORDED CRIMINAL INCIDENTS FOR MAJOR OFFENCES, OVER THE 12 MONTHS TO DECEMBER 2017, GREATER SYDNEY SAs

Greater Sydney Statistical Area	Murder *	Domestic violence related assault	Non-domestic violence related assault	Sexual assault	Indecent assault, act of indecency and other sexual offences	Robbery without a weapon	Robbery with a firearm	Robbery with a weapon not a firearm	Break and enter dwelling	Break and enter non-dwelling	Motor vehicle theft	Steal from motor vehicle	Steal from retail store	Steal from dwelling	Steal from person	Fraud	Malicious damage to property
Baulkham Hills and Hawkesbury	0	336	368	98	84	5	0	4	459	108	166	614	330	260	36	999	696
Blacktown	4	2,034	1,676	293	369	141	8	80	1,586	313	853	2,746	1,292	964	283	3,351	3,408
Central Coast	5	1,645	1,448	279	394	53	3	35	1,102	407	748	1,741	845	800	171	2,154	3,097
City and Inner South	3	1,366	3,674	305	610	222	15	100	959	666	561	1,678	3,527	1,293	1,316	5,708	3,397
Eastern Suburbs	2	613	1,002	146	208	50	4	17	707	172	352	922	964	736	211	1,931	1,533
Inner South West	5	1,936	1,639	263	314	115	13	51	1,229	345	868	2,345	986	860	186	3,769	3,107
Inner West	2	593	779	129	167	46	3	31	901	265	346	1,279	739	633	171	2,352	1,514
North Sydney and Hornsby	1	459	718	161	252	39	1	14	1,088	380	255	1,168	1,172	724	167	2,123	1,685
Northern Beaches	1	358	614	99	129	21	0	9	447	206	242	920	489	417	87	1,217	1,138
Outer South West	2	1,211	846	237	281	51	4	27	765	262	380	1,079	940	508	81	1,342	2,017
Outer West and Blue Mountains	1	1,563	1,315	315	374	70	3	42	1,071	353	664	1,769	1,036	754	180	2,394	2,854
Parramatta	3	1,709	1,707	288	362	169	21	70	1,716	466	826	2,628	1,294	992	332	3,949	2,670
Ryde	0	289	325	70	111	10	4	6	594	145	145	583	607	298	51	1,169	852
South West	1	1,549	1,377	241	339	117	12	70	1,326	369	748	2,056	1,118	709	200	3,156	2,503
Sutherland	2	482	586	115	128	13	0	12	354	116	203	747	541	304	69	852	1,255

* For murder the count given is for the number of victims, not incidents.

**TABLE 3.3A: TRENDS* IN RECORDED CRIMINAL INCIDENTS FOR MAJOR OFFENCES
OVER THE 24 MONTHS TO DECEMBER 2018, NSW LGAs**

NSW LGA	Murder*	Domestic violence related assault	Non-domestic violence related assault	Sexual assault	Indecent assault, act of indecency and other sexual offences	Robbery without a weapon	Robbery with a firearm	Robbery with a weapon not a firearm	Break and enter dwelling	Break and enter non-dwelling	Motor vehicle theft	Steal from motor vehicle	Steal from retail store	Steal from dwelling	Steal from person	Fraud	Malicious damage to property
Albury	.	ns	ns	ns	ns	.	.	.	ns	ns	ns	ns	63.7	ns	.	ns	ns
Armidale Regional	.	ns	ns	ns	ns	.	.	.	ns	ns	ns	ns	ns	ns	.	ns	ns
Ballina	.	ns	ns	ns	ns	.	.	.	ns	ns	ns	ns	ns	21.8	.	ns	ns
Balranald	ns
Bathurst Regional	.	ns	ns	ns	ns	.	.	.	ns	-58.4	ns	ns	ns	ns	ns	ns	-21.8
Bayside	.	ns	16.7	ns	ns	ns	.	.	ns	ns	ns	ns	ns	ns	ns	ns	ns
Bega Valley	.	ns	ns	ns	ns	.	.	.	ns	ns	.	ns	ns	ns	.	ns	-28.3
Bellingen	.	ns	-31.8	ns	ns	ns	ns	.	ns	.	160.0	ns
Berrigan	47.8	ns
Blacktown	.	ns	ns	ns	ns	ns	.	ns	41.3	ns	ns	ns	ns	ns	ns	ns	ns
Bland	ns	ns
Blayney	.	.	ns	ns	ns
Blue Mountains	.	ns	ns	ns	ns	.	.	.	ns	ns	ns	75.8	ns	ns	ns	ns	19.8
Bogan	.	ns	ns
Bourke	.	ns	ns	-48.1	ns	.	ns	-24.6	ns	.	ns	ns
Brewarrina	.	ns	ns	ns	.	.	ns	ns
Broken Hill	.	ns	ns	.	ns	.	.	.	ns	ns	ns	ns	ns	ns	.	ns	ns
Burwood	.	ns	ns	.	ns	.	.	.	-20.9	ns	ns	-22.1	ns	ns	ns	ns	ns
Byron	.	ns	ns	ns	ns	.	.	.	ns	ns	ns	ns	ns	ns	ns	ns	ns
Cabonne	.	83.3	ns	ns	.	ns	.	ns	.	.	73.0
Camden	.	ns	ns	ns	ns	.	.	.	ns	ns	ns	ns	53.8	ns	.	ns	ns
Campbelltown	.	ns	ns	ns	19.7	ns	.	ns	ns	ns	ns	ns	ns	ns	ns	13.1	ns
Canada Bay	.	ns	ns	ns	ns	.	.	.	-23.8	ns	ns	ns	ns	-22.6	ns	ns	ns
Canterbury-Bankstown	.	ns	ns	ns	ns	ns	.	ns	ns	ns	-11.7	-18.5	-9.9	-15.2	ns	-10.9	ns
Carrathool	ns
Central Coast	.	ns	ns	ns	ns	ns	.	ns	ns	ns	ns	ns	ns	ns	ns	ns	ns
Central Darling	.	ns	ns	ns	ns	.	ns	ns
Cessnock	.	ns	ns	ns	ns	.	.	.	ns	ns	-12.1	ns	ns	ns	.	ns	-24.4
Clarence Valley	.	ns	ns	ns	ns	.	.	.	ns	ns	ns	ns	ns	ns	.	33.6	ns
Cobar	.	ns	ns	ns	.	.	ns	ns
Coffs Harbour	.	ns	ns	ns	ns	.	.	.	ns	ns	36.1	54.9	54.5	ns	ns	23.6	ns
Coolamon
Coonamble	.	ns	ns	ns	ns	.	ns	.	60.0	.	ns	ns
Cootamundra-Gundagai	.	ns	ns	ns	.	.	ns	.	ns	.	ns	ns
Cowra	.	ns	ns	.	ns	.	.	.	ns	ns	.	ns	ns	ns	.	ns	ns
Cumberland	.	ns	ns	ns	ns	ns	.	ns	-12.9	ns	ns	ns	ns	ns	ns	ns	ns
Dubbo Regional	.	64.5	ns	ns	ns	.	.	.	ns	ns	ns	ns	ns	ns	ns	ns	ns
Dungog	.	ns	ns	ns
Edward River	.	ns	ns	ns	.	.	ns	.	ns	.	ns	ns
Eurobodalla	.	ns	ns	ns	ns	.	.	.	ns	ns	ns	ns	ns	ns	.	ns	ns
Fairfield	.	ns	ns	ns	ns	ns	.	ns	-38.4	ns	ns	ns	ns	ns	-23.8	ns	ns
Federation	.	ns	ns	ns	ns	.	ns	.	ns	.	ns	ns
Forbes	.	ns	ns	ns	ns	.	ns	ns	ns	.	ns	ns
Georges River	.	ns	ns	ns	ns	ns	.	.	ns	ns	29.5	ns	ns	ns	ns	ns	ns
Gilgandra	.	ns	ns	ns	58.1
Glen Innes Severn	.	ns	ns	-50.7	ns	.	-60.8	-37.1
Goulburn Mulwaree	.	ns	ns	ns	ns	.	.	.	ns	ns	48.1	ns	ns	ns	.	ns	ns
Greater Hume Shire	ns	.	.	ns	.	.	.	ns	ns
Griffith	.	ns	ns	ns	ns	.	.	.	ns	23.7	ns	ns	ns	ns	.	67.4	ns
Gunnedah	.	ns	ns	ns	.	114.3	113.3	ns	ns	.	ns	ns
Gwydir	ns
Hawkesbury	.	ns	ns	ns	ns	.	.	.	ns	ns	ns	ns	ns	ns	.	ns	ns
Hay	.	.	ns	ns
Hilltops	.	ns	ns	.	ns	.	.	.	ns	ns	ns	ns	ns	ns	.	ns	ns
Hornsby	.	ns	ns	ns	ns	.	.	.	-33.8	ns	ns	ns	ns	ns	ns	ns	-18.4
Hunters Hill	.	.	ns	ns	.	.	ns	.	ns	.	ns	ns
Inner West	.	-14.5	ns	ns	ns	ns	.	ns	ns	ns	ns	ns	ns	ns	ns	ns	ns
Inverell	.	37.2	-29.8	ns	ns	.	.	.	ns	ns	ns	114.5	ns	ns	.	ns	ns
Junee	ns
Kempsey	.	ns	ns	ns	ns	.	.	.	55.0	ns	ns	ns	ns	28.6	ns	96.9	ns
Kiama	.	ns	ns	ns	ns	ns	ns	.	-43.6	.	ns	ns
Ku-ring-gai	.	ns	ns	ns	ns	.	.	.	ns	ns	-41.2	ns	ns	ns	.	ns	-8.9
Kyogle	.	ns	74.1	ns	50.8
Lachlan	.	ns	ns	ns	ns	.	ns	.	ns	.	.	ns
Lake Macquarie	.	ns	ns	ns	ns	.	.	.	ns	ns	ns	ns	ns	ns	ns	24.0	-7.7

**TABLE 3.3A: TRENDS* IN RECORDED CRIMINAL INCIDENTS FOR MAJOR OFFENCES
OVER THE 24 MONTHS TO DECEMBER 2018, NSW LGAs**

NSW LGA	Murder*	Domestic violence related assault	Non-domestic violence related assault	Sexual assault	Indecent assault, act of indecency and other sexual offences	Robbery without a weapon	Robbery with a firearm	Robbery with a weapon not a firearm	Break and enter dwelling	Break and enter non-dwelling	Motor vehicle theft	Steal from motor vehicle	Steal from retail store	Steal from dwelling	Steal from person	Fraud	Malicious damage to property
Lane Cove	.	ns	ns	ns	ns	ns	ns	ns	ns	.	ns	ns
Leeton	.	ns	ns	.	ns	.	.	.	ns	ns	.	ns	ns	ns	.	ns	ns
Lismore	.	24.6	ns	ns	ns	.	.	.	ns	ns	ns	ns	ns	ns	.	32.5	ns
Lithgow	.	ns	ns	ns	ns	.	.	.	-36.4	ns	ns	ns	ns	ns	.	ns	-15.2
Liverpool	.	ns	ns	ns	ns	ns	.	ns	ns	ns	ns	-11.5	ns	ns	ns	-17.9	ns
Liverpool Plains	.	ns	ns	ns	ns	.	ns	ns
Lockhart
Lord Howe Island
Maitland	.	ns	ns	ns	ns	.	.	.	ns	ns	ns	ns	48.5	ns	ns	ns	-12.4
Mid-Coast	.	ns	ns	ns	ns	.	.	.	ns	ns	ns	52.6	ns	27.3	ns	ns	ns
Mid-Western Regional	.	ns	ns	ns	ns	.	.	.	-47.7	.	ns	-35.8	ns	ns	.	ns	ns
Moree Plains	.	ns	ns	-41.0	-44.7	-29.7	ns	ns	-33.8	.	ns	-24.6
Mosman	.	ns	ns	ns	.	.	ns	ns	ns	.	ns	ns
Murray River	.	.	ns	66.7	ns	.	ns	.	ns	.	ns	ns
Murrumbidgee	.	ns	ns
Muswellbrook	.	ns	ns	ns	ns	ns	ns	-40.7	ns	ns	.	ns	ns
Nambucca	.	ns	78.8	ns	ns	.	.	.	44.3	ns	ns	ns	56.9	40.6	.	98.8	ns
Narrabri	.	ns	ns	ns	ns	ns	ns	.	ns	.	-44.2	ns
Narrandera	.	ns	ns	-67.0	.	.	-67.7	ns
Narromine	.	48.2	ns	ns	ns	.	ns	.	ns	.	ns	ns
Newcastle	.	ns	ns	ns	-23.1	ns	.	ns	ns	-22.4	ns	-11.1	ns	ns	ns	ns	ns
North Sydney	.	ns	-29.6	ns	ns	.	.	.	ns	ns	ns	-28.6	ns	-23.6	ns	ns	ns
Northern Beaches	.	ns	ns	ns	ns	ns	.	.	ns	ns	-13.6	ns	ns	ns	ns	ns	ns
Oberon	.	ns	ns
Orange	.	ns	ns	ns	ns	.	.	.	ns	ns	ns	49.0	ns	ns	.	48.0	ns
Parkes	.	ns	ns	.	ns	.	.	.	ns	ns	.	ns	ns	ns	.	ns	-20.5
Parramatta	.	ns	ns	ns	ns	ns	.	ns	ns	ns	ns	ns	ns	ns	ns	ns	ns
Penrith	.	10.1	ns	ns	ns	ns	.	ns	ns	ns	ns	ns	ns	ns	ns	ns	ns
Port Macquarie-Hastings	.	ns	ns	ns	ns	.	.	.	ns	ns	ns	24.5	ns	ns	ns	47.3	ns
Port Stephens	.	ns	ns	ns	ns	.	.	.	ns	ns	ns	-28.8	ns	ns	.	ns	ns
Queanbeyan-Palerang Regional	.	ns	ns	ns	ns	.	.	.	ns	ns	ns	ns	ns	ns	.	ns	ns
Randwick	.	ns	ns	ns	9.9	ns	.	.	ns	-39.4	ns	20.2	ns	ns	ns	ns	ns
Richmond Valley	.	ns	ns	ns	ns	.	.	.	ns	ns	ns	ns	ns	ns	.	ns	ns
Ryde	.	23.3	ns	ns	ns	.	.	.	ns	ns	ns	ns	-32.1	ns	ns	ns	-19.5
Shellharbour	.	ns	ns	ns	ns	.	.	.	ns	ns	ns	ns	ns	ns	.	ns	ns
Shoalhaven	.	26.9	ns	-29.2	5.9	.	.	.	ns	ns	ns	ns	ns	ns	.	ns	ns
Singleton	.	ns	ns	ns	ns	.	.	.	ns	ns	ns	ns	ns	40.3	.	ns	46.5
Snowy Monaro Regional	.	ns	ns	ns	.	.	ns	.	.	.	ns	ns
Snowy Valleys	.	ns	ns	ns	ns	ns	ns	ns	ns	.	ns	ns
Strathfield	.	ns	ns	.	ns	.	.	.	-35.6	ns	ns	ns	ns	ns	ns	ns	ns
Sutherland Shire	.	ns	ns	-46.1	ns	.	.	.	ns	ns	ns	ns	ns	ns	ns	ns	ns
Sydney	.	ns	ns	ns	ns	ns	.	ns	ns	ns	ns	11.3	-11.4	ns	ns	ns	ns
Tamworth Regional	.	ns	ns	ns	ns	.	.	.	ns	ns	ns	ns	ns	ns	.	ns	ns
Temora	.	.	ns	ns	ns
Tenterfield	.	ns	ns	ns	.	.	ns	.	ns	.	ns	ns
The Hills Shire	.	ns	ns	ns	49.1	.	.	.	ns	ns	ns	ns	ns	ns	ns	ns	ns
Tweed	.	ns	ns	ns	ns	.	.	.	ns	ns	ns	47.2	ns	ns	ns	ns	ns
Unincorporated Far West
Upper Hunter Shire	.	ns	ns	ns	ns	ns	ns	.	35.0	.	ns	ns
Upper Lachlan Shire	ns
Uralla	ns
Wagga Wagga	.	ns	ns	ns	93.3	.	.	.	ns	ns	ns	ns	ns	ns	ns	ns	ns
Walcha
Walgett	.	ns	ns	ns	ns	.	ns	ns	ns	.	ns	-23.8
Warren	.	ns	ns
Warrumbungle Shire	.	ns	ns	ns	.	.	ns	.	ns	.	ns	ns
Waverley	.	ns	ns	ns	ns	.	.	.	-46.3	ns	ns	ns	ns	ns	ns	ns	-7.8
Weddin	ns
Wentworth	.	ns	ns	ns	ns	ns	.	.	ns	.	.	ns
Willoughby	.	57.1	-23.6	ns	ns	.	.	.	ns	-47.7	ns	ns	ns	ns	ns	ns	ns
Wingecarribee	.	ns	-8.1	ns	ns	.	.	.	ns	-29.9	ns	ns	113.7	-29.9	.	ns	ns
Wollondilly	.	ns	-23.8	ns	ns	.	.	.	ns	ns	ns	ns	ns	ns	.	ns	-31.0
Wollongong	.	ns	ns	ns	ns	ns	.	ns	ns	ns	ns	ns	ns	-12.4	ns	24.9	ns
Woollahra	.	ns	ns	ns	-41.5	.	.	.	-36.8	-33.3	ns	-33.2	ns	ns	ns	ns	-22.6
Yass Valley	.	ns	ns	ns	ns	.	ns	ns
NSW	ns	ns	ns	ns	ns	ns	ns	ns	-4.7	ns	ns	ns	ns	ns	-7.2	ns	ns

^ For further explanation of trend results, see page 44, Notes [5] and [6].

* There were no LGAs with 20 murder victims, hence no trend tests were reported. The trend test for NSW on the offence of murder is for the number of victims, not incidents.

TABLE 3.3B: RATIO NSW RATE OF RECORDED CRIMINAL INCIDENTS PER 100,000 POPULATION FOR MAJOR OFFENCES OVER THE 12 MONTHS TO DECEMBER 2018, NSW LGAs

NSW LGA	Murder*	Domestic violence related assault	Non-domestic violence related assault	Sexual assault	Indecent assault, act of indecency and other sexual offences	Robbery without a weapon	Robbery with a firearm	Robbery with a weapon not a firearm	Break and enter dwelling	Break and enter non-dwelling	Motor vehicle theft	Steal from motor vehicle	Steal from retail store	Steal from dwelling	Steal from person	Fraud	Malicious damage to property
Albury	2.2	1.4	1.5	1.3	1.6	1.8	1.9	1.4	1.8	1.8	1.4	2.0	2.4	1.9	1.1	0.9	1.6
Armidale Regional	.	1.7	1.5	1.8	1.8	1.2	.	3.4	2.8	2.0	1.6	2.4	1.4	2.0	0.9	0.9	1.8
Ballina	2.6	0.7	0.9	1.0	0.9	0.4	.	0.4	1.0	1.5	1.0	1.1	0.6	1.3	0.3	0.7	0.9
Balranald
Bathurst Regional	.	1.4	1.5	1.4	1.3	1.0	.	1.3	1.6	0.6	1.0	1.4	1.0	1.2	1.3	1.1	1.5
Bayside	1.3	0.9	0.8	0.5	0.5	1.1	0.6	0.6	0.6	0.4	0.7	0.7	0.7	0.7	0.9	1.0	0.7
Bega Valley	6.7	0.8	0.7	1.1	1.3	0.2	.	0.6	0.5	1.2	0.5	0.5	0.5	0.9	0.3	0.5	0.8
Bellingen	.	0.9	0.6	1.3	0.5	.	.	1.5	0.6	1.5	1.1	0.7	0.3	1.0	0.1	0.8	0.8
Berrigan	.	0.7	0.5	1.2	1.2	.	.	.	0.5	2.9	0.5	0.8	0.3	1.2	.	0.3	0.7
Blacktown	1.3	1.6	1.2	1.1	1.1	2.3	1.7	2.0	1.3	0.9	1.3	1.7	1.2	1.1	1.3	1.5	1.3
Bland	.	0.7	0.5	1.4	0.8	.	.	.	0.4	0.6	1.2	0.2	0.2	0.5	.	0.7	0.8
Blayney	.	0.7	0.8	0.9	1.0	.	.	.	1.3	2.4	0.7	0.5	0.3	0.8	.	0.4	0.8
Blue Mountains	.	0.8	0.7	1.1	0.9	0.3	0.6	0.5	0.8	0.6	0.6	0.9	0.5	0.7	0.5	0.7	1.2
Bogan
Bourke
Brewarrina	.	3.0	2.0	1.1	2.2	0.9	.	1.1	3.3	3.4	1.2	2.0	1.0	2.7	0.4	0.8	2.5
Broken Hill	.	0.4	0.6	0.6	0.6	2.7	1.3	1.9	0.7	0.7	0.6	0.6	2.4	0.8	1.8	1.6	0.5
Burwood	.	0.8	1.6	1.4	1.7	0.3	.	0.3	0.7	1.4	0.9	1.2	0.8	1.2	2.2	0.7	1.3
Byron	.	0.9	0.4	1.5	1.2	.	.	.	0.9	1.6	1.0	0.3	0.2	0.9	.	0.3	0.6
Cabonne	.	1.1	0.5	0.6	0.7	0.1	.	0.4	0.5	0.5	0.7	0.6	0.7	0.5	0.1	0.7	0.7
Camden	.	1.5	0.9	1.6	1.3	1.3	1.8	1.8	0.9	0.7	1.0	1.2	1.7	1.0	0.9	0.9	1.2
Campbelltown	1.4	0.3	0.4	0.4	0.5	0.3	0.5	0.7	0.6	0.6	0.6	0.6	0.3	0.6	0.4	0.9	0.4
Canada Bay	.	0.8	0.7	0.7	0.6	1.0	1.8	1.0	0.6	0.5	1.0	0.7	0.5	0.5	0.4	0.9	0.7
Canterbury-Bankstown	1.2	0.8	0.7	0.7	0.6	1.0	1.8	1.0	0.6	0.5	1.0	0.7	0.5	0.5	0.4	0.9	0.7
Carrathool
Central Coast	0.3	1.3	1.1	1.1	1.2	0.7	1.0	0.8	0.9	0.9	1.2	0.9	0.8	0.9	0.8	1.0	1.1
Central Darling
Cessnock	.	1.4	0.9	1.9	1.4	0.4	2.6	0.3	1.8	2.1	3.1	1.5	1.0	1.9	0.4	0.9	1.2
Clarence Valley	2.2	1.1	1.2	1.1	1.1	0.1	.	0.7	1.1	1.6	1.1	1.0	0.8	1.7	0.6	1.1	1.3
Cobar	.	2.6	2.2	1.4	2.5	.	.	2.0	1.3	2.8	2.0	1.0	0.2	0.7	0.8	0.7	3.0
Coffs Harbour	.	1.7	1.5	1.9	2.0	1.9	2.0	1.4	1.7	1.9	1.6	1.6	1.2	1.3	0.8	1.1	1.3
Coolamon	.	0.7	0.6	0.6	0.7	.	.	.	0.5	1.9	0.8	0.2	0.1	0.6	.	0.4	0.5
Coonamble	.	4.4	3.1	2.0	3.0	1.3	.	4.7	6.4	9.2	2.4	2.6	2.1	4.1	3.2	1.0	4.4
Cootamundra-Gundagai	.	1.6	1.2	1.4	1.9	.	.	.	1.0	1.3	0.7	0.5	0.8	1.4	0.2	1.3	1.4
Cowra	.	1.2	1.6	1.0	1.7	1.2	.	0.7	1.8	2.4	1.0	0.6	0.9	1.1	0.4	0.6	1.8
Cumberland	1.0	1.0	0.9	0.6	0.6	1.6	2.2	1.0	0.9	0.6	1.0	1.1	0.6	0.7	0.9	1.3	0.7
Dubbo Regional	.	2.9	2.0	2.2	2.2	1.1	.	3.2	3.8	3.8	2.4	3.0	2.0	2.1	1.7	1.1	3.0
Dungog	.	0.9	0.5	1.2	1.0	.	.	.	0.6	0.5	0.6	0.2	0.0	0.8	0.2	0.4	0.6
Edward River	.	1.6	0.8	1.7	1.2	0.6	5.6	1.0	1.1	2.3	0.6	0.9	0.9	1.8	.	0.6	1.4
Eurobodalla	.	1.2	1.2	1.3	0.9	0.3	2.6	0.7	1.5	1.2	0.8	1.0	1.2	1.1	0.0	0.5	1.3
Fairfield	1.1	0.9	0.7	0.7	0.7	1.6	1.7	1.3	0.5	0.5	1.0	0.8	0.6	0.5	0.7	1.0	0.7
Federation	9.2	0.5	1.0	0.8	0.9	.	.	0.8	2.7	1.6	0.8	0.5	0.3	1.5	0.3	0.4	0.8
Forbes	.	1.9	1.6	1.0	1.5	0.5	.	.	2.0	5.2	0.9	1.0	0.9	1.6	0.4	0.7	1.6
Georges River	1.5	0.7	0.6	0.4	0.5	1.0	0.6	0.9	0.6	0.4	0.7	0.5	0.6	0.5	0.7	0.8	0.6
Gilgandra	.	2.3	1.6	1.6	2.4	.	.	.	2.5	4.5	2.0	1.4	0.4	1.5	0.9	0.8	1.6
Glen Innes Severn	.	1.7	1.9	2.3	1.3	0.6	.	1.1	1.1	1.1	1.2	0.4	1.1	1.8	0.6	0.3	1.5
Goulburn Mulwaree	.	1.0	1.0	1.2	2.0	0.2	.	0.3	0.8	1.0	0.8	0.7	1.3	1.2	0.2	0.9	1.1
Greater Hume Shire	.	0.5	0.3	1.7	1.1	.	.	.	0.7	1.3	1.1	0.4	.	0.7	0.4	0.3	0.5
Griffith	.	2.0	1.2	1.5	1.0	1.2	1.9	0.4	1.3	2.7	1.4	1.4	1.5	1.2	0.6	0.8	1.4
Gunnedah	.	1.3	1.4	1.6	1.2	0.8	.	.	2.2	1.4	2.9	1.6	1.0	2.1	0.4	0.8	1.8
Gwydir	.	1.4	0.6	1.5	1.3	.	.	.	0.9	1.3	1.5	0.8	0.1	1.7	0.3	0.1	0.5
Hawkesbury	.	1.0	0.8	1.6	1.2	0.6	0.8	0.3	0.7	1.1	0.8	0.7	0.7	0.7	0.4	0.8	0.9
Hay
Hilltops	.	1.5	1.3	1.4	1.7	0.6	.	.	0.8	1.3	1.3	0.9	0.7	1.7	0.2	0.6	1.6
Hornsby	1.5	0.3	0.4	0.6	0.6	0.5	0.3	0.3	0.4	0.4	0.4	0.4	0.8	0.3	0.5	0.8	0.5
Hunters Hill	7.7	0.3	0.6	0.5	0.8	.	.	.	0.9	1.0	0.6	0.7	0.4	0.7	0.4	0.9	0.7
Inner West	0.6	0.5	0.8	0.8	0.9	1.2	1.6	1.0	0.8	0.6	0.7	0.8	0.7	1.0	1.0	1.2	0.9
Inverell	.	1.9	1.3	2.0	2.7	1.3	.	0.6	2.8	2.3	0.9	1.8	1.3	2.1	0.6	0.6	1.9
Juneee	17.5	0.7	0.9	0.4	0.6	.	.	1.4	0.8	1.3	0.4	0.3	0.2	0.9	.	0.4	1.2
Kempsey	.	2.2	1.5	2.0	1.4	2.7	1.7	3.5	4.1	3.6	2.3	1.1	1.7	3.0	1.6	1.0	1.8
Kiama	.	0.4	0.3	0.2	0.3	0.2	.	0.8	0.5	0.8	0.6	0.5	0.1	0.4	0.2	0.5	0.5
Ku-ring-gai	.	0.2	0.2	0.4	0.4	0.3	.	0.7	0.8	0.3	0.1	0.3	0.1	0.5	0.2	0.6	0.3
Kyogle	.	1.6	1.3	2.0	2.6	0.6	.	.	1.0	1.5	0.9	0.6	0.3	0.6	0.2	0.3	1.4
Lachlan	.	2.5	1.4	2.2	2.1	0.8	8.1	.	1.5	4.1	1.5	0.9	0.3	2.0	0.3	0.4	2.4
Lake Macquarie	1.7	1.0	0.9	1.3	1.2	0.6	0.5	0.6	1.0	1.2	1.6	1.3	1.2	0.9	0.5	1.1	1.2

TABLE 3.3B: RATIO NSW RATE* OF RECORDED CRIMINAL INCIDENTS PER 100,000 POPULATION FOR MAJOR OFFENCES OVER THE 12 MONTHS TO DECEMBER 2018, NSW LGAs

NSW LGA	Murder*	Domestic violence related assault	Non-domestic violence related assault	Sexual assault	Indecent assault, act of indecency and other sexual offences	Robbery without a weapon	Robbery with a firearm	Robbery with a weapon not a firearm	Break and enter dwelling	Break and enter non-dwelling	Motor vehicle theft	Steal from motor vehicle	Steal from retail store	Steal from dwelling	Steal from person	Fraud	Malicious damage to property
Lane Cove	.	0.3	0.3	0.4	0.7	0.3	.	0.2	0.6	0.8	0.4	0.5	0.2	0.7	0.2	0.8	0.4
Leeton	10.0	1.8	1.2	1.5	2.0	.	.	1.6	2.5	2.6	1.0	1.2	0.7	1.5	0.7	0.6	1.0
Lismore	.	1.3	1.6	1.9	1.9	1.1	.	1.7	1.4	1.3	1.7	1.2	1.0	1.6	0.8	0.7	1.3
Lithgow	.	1.1	1.5	1.4	1.2	0.2	.	.	1.0	0.9	0.9	0.5	0.6	1.2	0.5	1.1	1.4
Liverpool	1.0	1.1	0.8	0.9	0.9	1.1	1.2	1.4	0.9	0.6	1.2	1.0	1.0	0.8	0.9	1.0	0.8
Liverpool Plains	.	1.4	1.3	0.7	0.9	.	.	.	0.8	0.7	0.8	0.5	0.6	1.4	0.2	0.5	1.5
Lockhart	.	0.8	0.5	0.8	0.9	.	.	.	1.4	2.1	1.5	1.2	0.2	0.8	.	0.2	0.8
Lord Howe Island
Maitland	.	1.6	1.1	1.4	1.4	0.6	1.2	1.9	1.4	1.3	1.4	1.3	1.9	1.7	0.9	1.1	1.3
Mid-Coast	1.2	1.2	1.1	1.5	1.5	1.0	0.5	0.6	1.7	2.4	1.1	1.2	0.8	2.1	0.6	0.8	1.3
Mid-Western Regional	.	1.4	1.2	1.4	0.9	0.6	.	.	0.7	0.5	0.8	0.7	0.7	1.3	0.2	0.6	1.6
Moree Plains	.	3.6	2.8	1.7	0.6	3.1	.	1.4	5.2	6.9	3.7	3.2	4.6	3.2	2.5	1.4	4.9
Mosman	.	0.4	0.3	0.1	0.4	1.9	.	0.3	0.6	0.4	0.4	0.5	0.2	0.8	0.1	0.7	0.6
Murray River	.	0.5	0.6	1.1	0.6	.	4.2	.	1.0	2.3	1.0	0.7	0.4	0.9	.	0.3	0.8
Murrumbidgee	.	1.6	0.9	1.4	3.5	.	.	.	0.8	2.1	0.8	0.5	0.1	1.1	.	0.5	1.0
Muswellbrook	.	1.8	1.4	2.1	1.1	0.6	.	.	2.3	4.4	1.6	0.8	1.1	1.8	0.9	0.7	1.9
Nambucca	5.8	1.8	1.9	3.1	2.1	0.3	.	1.4	2.3	5.4	1.7	1.4	1.5	1.9	0.6	1.3	1.6
Narrabri	.	1.7	1.5	2.2	0.8	0.4	.	.	1.9	2.0	1.5	1.4	0.4	1.5	.	0.5	1.4
Narrandera	.	1.4	1.3	1.4	2.9	0.9	.	1.6	1.5	1.8	1.0	0.7	1.0	1.0	.	0.4	1.9
Narromine	.	3.4	1.6	1.4	2.0	1.6	15.3	2.9	4.0	4.8	2.6	2.3	0.5	3.4	2.0	0.9	2.1
Newcastle	1.4	1.0	1.6	1.3	1.3	1.0	2.8	2.7	1.6	1.6	2.0	2.5	1.7	1.9	1.6	1.6	1.7
North Sydney	.	0.4	0.5	0.6	0.5	0.6	.	0.8	0.6	0.7	0.4	0.4	0.7	0.9	0.9	1.1	0.6
Northern Beaches	0.4	0.4	0.6	0.5	0.5	0.5	0.4	0.4	0.4	0.5	0.5	0.6	0.7	0.6	0.4	0.7	0.6
Oberon	.	1.5	0.8	1.8	0.9	.	.	.	1.3	3.1	0.4	0.4	0.2	1.1	.	0.7	1.4
Orange	.	1.6	1.4	2.4	1.8	1.4	.	2.3	2.3	1.9	1.9	2.2	1.4	1.8	0.9	1.1	1.8
Parkes	7.6	1.6	1.8	2.4	2.5	0.4	.	0.6	1.0	2.0	0.8	0.7	1.0	1.5	.	0.7	1.7
Parramatta	0.9	0.8	0.9	0.7	0.8	1.1	0.8	1.4	1.1	0.8	0.8	1.1	1.1	0.9	1.7	1.2	0.8
Penrith	0.6	1.6	1.2	1.3	1.2	1.4	1.5	1.4	1.2	1.1	1.4	1.4	1.2	1.3	1.3	1.4	1.2
Port Macquarie-Hastings	1.4	0.9	0.8	1.1	1.2	0.9	1.2	0.6	0.8	1.4	1.0	0.8	0.6	1.1	0.5	0.9	1.0
Port Stephens	1.6	1.3	0.9	1.2	1.4	0.7	0.7	0.3	0.9	1.0	1.1	0.6	0.8	1.2	0.6	0.9	1.3
Queanbeyan-Palerang Regional	.	0.6	0.7	0.7	0.8	0.4	1.7	1.4	1.2	0.8	1.1	1.4	0.9	1.0	0.2	0.6	0.9
Randwick	.	0.6	0.9	0.6	0.7	0.7	0.7	0.4	0.7	0.3	0.7	0.7	0.6	0.8	1.0	1.0	0.7
Richmond Valley	.	1.4	1.4	2.3	1.8	.	2.2	1.2	1.6	2.2	1.4	0.8	0.8	1.3	0.6	0.7	1.4
Ryde	0.9	0.5	0.5	0.5	0.6	0.5	1.2	0.3	0.7	0.5	0.4	0.5	0.9	0.6	0.8	1.0	0.5
Shellharbour	.	0.7	0.6	1.2	1.0	0.5	0.7	1.2	0.7	0.7	1.0	0.9	1.2	0.8	0.3	0.7	1.0
Shoalhaven	1.1	1.1	1.0	1.0	1.4	0.6	0.5	0.5	1.1	0.9	0.8	1.0	1.0	1.0	0.5	0.7	1.0
Singleton	.	1.1	0.9	1.5	1.2	0.4	.	.	1.3	2.7	1.1	0.7	0.8	1.8	0.3	0.7	1.3
Snowy Monaro Regional	.	0.6	0.8	1.2	1.1	.	.	.	0.6	1.2	0.6	0.7	0.4	0.7	0.1	0.4	1.0
Snowy Valleys	.	1.2	1.0	1.7	1.3	.	.	.	1.7	2.3	1.6	1.1	0.8	1.3	0.1	0.4	1.6
Strathfield	.	0.8	0.9	0.5	0.8	0.8	.	0.6	0.8	0.5	0.8	0.9	0.6	0.7	2.2	1.5	0.6
Sutherland Shire	.	0.5	0.6	0.4	0.5	0.3	0.2	0.1	0.4	0.3	0.5	0.5	0.8	0.6	0.4	0.6	0.7
Sydney	2.0	1.1	3.4	1.5	1.9	4.7	1.5	2.8	1.0	1.7	1.0	1.1	3.8	1.9	9.3	2.9	1.6
Tamworth Regional	1.9	1.6	1.5	1.9	1.5	1.0	.	1.4	2.8	1.6	0.9	1.8	1.4	1.7	0.4	0.8	1.8
Temora	.	0.6	1.5	1.1	0.5	0.8	.	.	0.6	0.7	0.3	0.8	0.2	0.9	.	0.5	1.1
Tenterfield	.	1.6	1.1	.	1.2	.	.	.	1.6	1.4	1.1	0.8	1.0	2.6	0.3	0.5	1.3
The Hills Shire	0.7	0.3	0.3	0.4	0.5	0.5	.	0.2	0.6	0.4	0.4	0.6	0.5	0.6	0.3	0.7	0.4
Tweed	2.4	0.9	0.7	0.9	0.8	0.6	1.1	0.5	0.8	1.0	1.2	1.1	0.5	0.9	0.5	0.7	0.9
Unincorporated Far West
Upper Hunter Shire	8.0	0.9	0.7	1.0	1.3	.	.	.	0.9	2.6	0.9	0.6	0.4	1.5	0.1	0.5	1.0
Upper Lachlan Shire	.	0.3	0.3	1.2	0.9	.	.	.	0.8	0.6	0.5	0.3	.	0.8	0.2	0.3	0.5
Uralla	.	0.8	0.4	0.9	2.6	.	.	.	0.8	1.0	0.5	0.1	.	1.3	.	0.3	0.6
Wagga Wagga	.	1.7	1.4	2.0	1.8	0.7	0.8	1.0	3.4	1.9	2.1	1.7	1.5	2.0	1.1	0.9	2.1
Walcha	.	1.0	1.3	3.9	5.1	.	.	.	0.3	0.7	0.2	0.3	0.2	0.4	1.2	0.6	0.6
Walgett	18.4	6.3	3.2	2.2	3.2	.	.	.	3.6	5.1	1.4	1.1	1.4	2.6	.	0.7	3.7
Warren
Warrumbungle Shire	.	1.5	1.1	2.0	1.7	.	.	.	1.2	1.8	0.7	0.5	0.5	1.5	0.4	0.5	1.3
Waverley	3.1	0.6	1.1	0.8	0.6	0.9	0.7	0.1	0.4	0.3	0.8	0.6	2.5	0.9	1.3	1.1	0.8
Weddin	.	0.3	0.8	0.4	0.8	.	.	.	0.6	0.6	0.5	0.3	0.3	0.8	.	0.6	0.7
Wentworth	32.7	2.7	1.7	1.9	2.2	2.3	.	1.3	1.6	2.7	1.9	0.4	0.2	1.5	0.5	0.3	1.5
Willoughby	.	0.4	0.4	0.4	0.6	0.9	0.6	0.5	0.7	0.4	0.4	0.5	2.8	0.5	1.0	1.0	0.5
Wingecarribee	2.3	0.5	0.5	0.7	1.0	0.3	.	.	0.4	0.7	0.4	0.4	0.7	0.4	0.0	0.6	0.9
Wollondilly	.	1.0	0.3	0.9	0.7	.	2.0	0.7	0.5	0.7	0.7	0.4	0.2	0.4	0.1	0.4	0.5
Wollongong	2.1	0.8	0.9	1.0	0.8	1.0	2.4	1.5	1.0	1.1	1.3	1.4	1.2	1.0	0.5	0.8	1.0
Woollahra	.	0.4	0.5	0.8	0.4	0.1	.	0.3	0.5	0.3	0.6	0.5	0.5	0.9	1.1	0.8	0.5
Yass Valley	.	0.5	0.5	0.6	1.0	0.6	.	.	0.6	0.6	0.6	0.3	0.1	0.5	.	0.4	0.6
NSW	1.0	1.0	1.0	1.0	1.0	1.0	1.0	1.0	1.0	1.0	1.0	1.0	1.0	1.0	1.0	1.0	1.0

* For further explanation of rate calculation populations and the ratio to NSW rate, see page 44, Footnote 2 and Note [8]. A result of . indicates either that there were no relevant offences recorded in the LGA, or that the population is less than 3,000 people and no rate was calculated.

Sydney LGA can be considered a special case since the population used to calculate the rate is much lower than the population using the area for work and entertainment and this will be reflected in higher incident rates.

* The ratios given on the offence of murder are calculated for the number of victims, not incidents, and must be treated with caution since for LGAs with relatively small populations a single murder victim will result in relatively high ratio to state.

TABLE 3.3C: NUMBER OF RECORDED CRIMINAL INCIDENTS FOR MAJOR OFFENCES, OVER THE 12 MONTHS TO DECEMBER 2018, NSW LGAs

NSW LGA	Murder *	Domestic violence related assault	Non-domestic violence related assault	Sexual assault	Indecent assault, act of indecency and other sexual offences	Robbery without a weapon	Robbery with a firearm	Robbery with a weapon not a firearm	Break and enter dwelling	Break and enter non-dwelling	Motor vehicle theft	Steal from motor vehicle	Steal from retail store	Steal from dwelling	Steal from person	Fraud	Malicious damage to property
Albury	1	285	327	51	84	18	2	8	324	126	126	523	401	240	30	319	626
Armidale Regional	0	200	184	40	54	7	0	11	291	80	81	359	135	148	15	189	418
Ballina	1	112	158	33	37	3	0	2	146	82	69	241	88	134	8	208	292
Balranald	0	11	12	3	1	0	0	0	13	7	2	11	0	9	0	11	32
Bathurst Regional	0	225	255	44	57	8	0	6	232	32	70	283	141	126	29	293	483
Bayside	2	582	530	67	82	34	2	10	342	95	197	614	372	282	86	1,101	911
Bega Valley	2	106	97	28	46	1	0	2	60	51	31	80	52	79	6	102	198
Bellingen	0	46	30	12	7	0	0	2	28	25	23	44	12	31	1	65	76
Berrigan	0	23	19	8	10	0	0	0	16	33	7	34	9	26	0	16	46
Blacktown	4	2,184	1,690	286	393	159	12	78	1,525	428	781	2,903	1,363	938	255	3,610	3,422
Bland	0	15	13	6	5	0	0	0	8	5	12	6	3	8	0	27	36
Blayney	0	19	25	5	7	0	0	0	31	23	8	17	7	14	0	21	46
Blue Mountains	0	232	209	66	73	4	1	4	200	57	74	341	127	132	22	364	721
Bogan	0	22	17	4	1	0	0	0	11	17	7	16	4	16	0	19	38
Bourke	0	103	49	11	11	0	0	0	55	21	12	58	43	26	4	25	134
Brewarrina	0	44	36	8	9	1	0	1	35	19	6	31	6	13	1	9	54
Broken Hill	0	205	147	15	39	3	0	2	201	79	37	174	58	116	4	91	337
Burwood	0	59	101	16	23	20	1	8	87	34	37	109	293	74	38	409	160
Byron	0	108	222	36	58	2	0	1	77	62	53	194	88	103	40	164	321
Cabonne	0	44	23	15	16	0	0	0	42	29	23	21	7	29	0		64
Camden	0	353	180	41	58	1	0	4	136	54	108	235	180	111	5	372	456
Campbelltown	2	930	629	194	213	42	6	31	524	148	277	951	857	420	77	1,016	1,409
Canada Bay	0	100	133	25	46	5	1	7	198	68	95	283	103	127	22	580	292
Canterbury-Bankstown	4	1,131	975	185	217	73	13	41	751	232	589	1,337	525	456	83	2,125	1,830
Carrathool	0	9	13	0	11	0	0	1	17	7	5	11	1	11	0	10	25
Central Coast	1	1,661	1,476	277	408	46	7	30	1,015	415	662	1,537	883	724	146	2,229	2,899
Central Darling	0	89	32	7	4	0	0	0	30	24	4	20	1	10	0	8	54
Cessnock	0	306	207	81	81	4	3	2	352	156	297	427	178	272	11	354	527
Clarence Valley	1	214	248	43	55	1	0	4	194	108	96	261	137	220	16	362	506
Cobar	0	46	41	5	12	0	0	1	21	17	16	23	3	8	2	21	105
Coffs Harbour	0	473	459	104	151	27	3	11	437	190	200	567	292	239	32	523	749
Coolamon	0	11	11	2	3	0	0	0	7	11	6	4	1	6	0	12	17
Coonamble	0	66	50	6	12	1	0	2	87	48	16	50	27	40	7	26	133
Cootamundra-Gundagai	0	66	55	12	21	0	0	0	38	19	14	29	28	38	1	96	118
Cowra	0	56	80	9	21	3	0	1	79	40	21	39	38	35	3	47	170
Cumberland	2	892	797	109	143	69	10	25	720	187	397	1,248	404	402	116	1,914	1,147
Dubbo Regional	0	569	413	83	114	11	0	18	661	257	207	758	326	262	48	363	1,177
Dungog	0	31	20	8	9	0	0	0	19	6	9	10	1	18	1	25	43
Edward River	0	54	29	11	11	1	1	1	34	27	9	38	24	40	0	35	92
Eurobodalla	0	177	185	37	33	2	2	3	197	60	53	181	144	99	1	134	364
Fairfield	2	704	596	106	149	62	7	29	332	141	333	848	387	254	77	1,329	1,010
Federation	1	22	50	7	11	0	0	1	29	26	16	33	13	46	2	32	73
Forbes	0	70	62	7	15	1	0	0	65	66	15	50	28	39	2	45	120
Georges River	2	430	373	49	80	31	2	15	291	80	180	394	293	181	57	852	721
Gilgandra	0	37	27	5	10	0	0	0	36	25	14	29	6	16	2	22	49
Glen Innes Severn	0	56	69	15	12	1	0	1	34	13	18	19	32	40	3	20	100
Goulburn Mulwaree	0	115	128	26	60	1	0	1	82	39	40	103	126	88	3	171	255
Greater Hume Shire	0	21	11	13	12	0	0	0	24	18	19	20	0	19	2	24	37
Griffith	0	198	133	29	27	6	1	1	117	94	64	180	127	79	8	144	275
Gunnedah	0	63	72	15	15	2	0	0	92	23	60	96	40	66	3	64	165
Gwydir	0	27	13	6	7	0	0	0	17	9	13	21	2	22	1	4	21
Hawkesbury	0	244	208	77	80	8	1	2	167	96	92	223	157	114	15	336	427
Hay	0	19	28	5	7	0	0	0	12	12	5	15	1	10	0	18	79
Hilltops	0	109	101	19	32	2	0	0	50	32	42	79	44	78	2	72	222
Hornsby	2	164	215	67	95	13	1	5	208	76	90	306	356	124	41	746	528
Hunters Hill	1	18	36	6	12	0	0	0	46	20	14	47	18	26	3	88	78
Inner West	1	366	627	111	166	46	6	20	493	159	240	787	399	473	104	1,517	1,243
Inverell	0	118	87	25	46	4	0	1	157	51	24	148	70	87	5	65	232
Junee	1	17	23	2	4	0	0	1	18	11	4	9	5	15	0	15	59
Kempsey	0	241	183	43	41	15	1	11	406	138	115	162	154	216	25	193	402
Kiama	0	36	24	3	7	1	0	2	40	24	22	56	8	22	3	75	84
Ku-ring-gai	0	74	103	35	46	8	0	9	327	55	30	191	51	148	16	464	317
Kyogle	0	53	47	13	23	1	0	0	31	18	14	27	8	14	1	17	95
Lachlan	0	58	35	10	13	1	1	0	31	33	15	28	6	31	1	15	112
Lake Macquarie	3	737	700	196	248	22	2	14	705	315	550	1,247	755	465	56	1,500	1,795

TABLE 3.3C: NUMBER OF RECORDED CRIMINAL INCIDENTS FOR MAJOR OFFENCES, OVER THE 12 MONTHS TO DECEMBER 2018, NSW LGAs

NSW LGA	Murder *	Domestic violence related assault	Non-domestic violence related assault	Sexual assault	Indecent assault, act of indecency and other sexual offences	Robbery without a weapon	Robbery with a firearm	Robbery with a weapon not a firearm	Break and enter dwelling	Break and enter non-dwelling	Motor vehicle theft	Steal from motor vehicle	Steal from retail store	Steal from dwelling	Steal from person	Fraud	Malicious damage to property
Lane Cove	0	40	45	11	28	2	0	1	80	40	26	97	29	69	5	201	124
Leeton	1	79	54	13	23	0	0	2	96	38	19	69	24	42	4	42	85
Lismore	0	218	280	61	82	9	0	8	202	76	122	263	136	172	19	212	433
Lithgow	0	89	133	22	26	1	0	0	75	24	33	57	39	63	6	149	224
Liverpool	2	893	703	142	201	45	5	32	657	161	420	1,083	685	419	109	1,411	1,302
Liverpool Plains	0	40	41	4	7	0	0	0	20	7	11	18	16	27	1	24	88
Lockhart	0	10	6	2	3	0	0	0	15	9	8	19	2	6	0	5	19
Lord Howe Island	0	0	1	1	0	0	0	0	1	0	1	0	0	1	0	0	1
Maitland	0	484	373	86	112	9	2	16	391	139	193	527	484	329	39	557	768
Mid-Coast	1	425	421	103	142	18	1	6	517	293	171	537	226	475	32	463	901
Mid-Western Regional	0	128	116	26	23	3	0	0	56	16	32	79	55	80	3	98	302
Moree Plains	0	182	154	17	8	8	0	2	236	121	83	211	193	104	18	127	490
Mosman	0	45	35	3	12	11	0	1	64	15	19	74	23	59	1	131	129
Murray River	0	24	30	10	7	0	1	0	40	36	20	42	14	25	0	26	73
Murrumbidgee	0	24	14	4	14	0	0	0	11	11	5	10	1	11	0	14	30
Muswellbrook	0	109	90	25	18	2	0	0	130	93	44	64	58	72	8	80	229
Nambucca	1	130	152	45	42	1	0	3	153	137	54	137	91	90	6	171	236
Narrabri	0	83	78	22	10	1	0	0	85	34	32	89	15	50	0	43	135
Narrandera	0	31	30	6	17	1	0	1	29	14	10	21	19	14	0	17	83
Narromine	0	83	43	7	13	2	2	2	89	41	28	72	11	54	7	39	102
Newcastle	2	618	1,053	159	210	31	9	46	881	336	530	1,952	859	757	138	1,738	2,058
North Sydney	0	120	140	32	38	8	0	6	160	64	43	157	168	168	37	538	340
Northern Beaches	1	447	602	106	143	24	2	11	391	157	209	779	570	421	65	1,238	1,193
Oberon	0	31	17	7	5	0	0	0	23	22	4	11	4	15	0	26	55
Orange	0	243	238	74	76	11	0	10	324	103	129	432	184	182	20	302	557
Parkes	1	89	108	27	38	1	0	1	51	39	20	54	47	55	0	66	190
Parramatta	2	752	847	129	184	49	4	36	933	259	323	1,246	858	546	220	1,867	1,385
Penrith	1	1,234	952	192	249	55	6	31	853	300	486	1,376	775	657	139	1,889	1,827
Port Macquarie-Hastings	1	272	270	67	94	14	2	5	216	152	133	305	159	221	21	464	577
Port Stephens	1	351	266	63	101	9	1	2	208	96	127	208	184	216	24	398	686
Queanbeyan-Palerang Regional	0	135	171	32	45	4	2	9	228	64	111	385	166	144	7	217	411
Randwick	0	363	545	65	111	21	2	7	345	60	185	548	284	286	85	978	787
Richmond Valley	0	124	127	39	41	0	1	3	123	66	53	93	57	76	7	100	240
Ryde	1	254	231	48	76	12	3	4	286	79	80	302	368	177	53	802	461
Shellharbour	0	200	171	61	70	7	1	9	177	62	120	322	272	137	10	311	506
Shoalhaven	1	429	419	80	143	12	1	6	369	126	142	497	330	244	29	451	796
Singleton	0	96	85	26	29	2	0	0	99	81	44	75	62	101	4	113	233
Snowy Monaro Regional	0	47	66	19	22	0	0	0	42	31	19	66	27	34	1	50	149
Snowy Valleys	0	66	59	18	19	0	0	0	82	43	38	77	37	47	1	38	170
Strathfield	0	140	159	17	34	7	0	3	121	28	59	185	84	80	51	440	205
Sutherland Shire	0	456	541	62	114	12	1	3	316	85	198	582	562	310	45	899	1,154
Sydney	4	1,006	3,215	258	453	206	7	70	757	501	398	1,295	2,755	1,101	1,160	4,331	2,717
Tamworth Regional	1	373	362	87	91	12	0	9	587	126	95	544	265	255	12	337	806
Temora	0	13	37	5	3	1	0	0	12	6	3	25	3	14	0	22	49
Tenterfield	0	39	29	0	8	0	0	0	37	12	12	26	20	43	1	21	66
The Hills Shire	1	212	213	50	79	15	0	3	365	94	121	491	288	243	29	797	469
Tweed	2	323	274	63	75	10	2	5	246	127	184	521	140	218	27	452	648
Unincorporated Far West	0	1	3	0	0	0	0	0	1	0	2	2	6	0	0	1	2
Upper Hunter Shire	1	49	39	11	18	0	0	0	45	48	22	41	16	54	1	43	108
Upper Lachlan Shire	0	8	9	7	7	0	0	0	20	6	6	11	0	16	1	14	28
Uralla	0	19	10	4	16	0	0	0	17	8	5	4	0	20	0	11	29
Wagga Wagga	0	404	368	93	116	8	1	7	741	157	226	539	313	310	37	372	1,018
Walcha	0	12	16	9	16	0	0	0	3	3	1	5	2	3	2	12	14
Walgett	1	147	79	10	20	0	0	0	76	41	14	34	28	39	0	30	170
Warren	0	43	19	6	4	1	0	0	14	18	9	18	7	12	4	9	60
Warrumbungle Shire	0	52	41	14	16	0	0	0	38	22	11	23	15	35	2	31	89
Waverley	2	155	323	41	47	12	1	1	88	33	95	207	570	165	51	544	440
Weddin	0	4	12	1	3	0	0	0	7	3	3	6	4	7	0	15	20
Wentworth	2	72	49	10	15	3	0	1	38	24	22	15	4	26	2	13	77
Willoughby	0	121	139	24	47	14	1	4	181	46	55	190	691	101	41	532	322
Wingecarribee	1	94	102	27	51	3	0	0	65	47	36	95	109	54	1	184	334
Wollondilly	0	188	64	34	35	0	2	4	81	46	57	106	27	49	2	120	198
Wollongong	4	665	785	152	174	39	10	34	721	292	459	1,421	805	509	62	1,074	1,637
Woollahra	0	93	110	35	24	1	0	2	98	20	57	133	83	126	34	322	219
Yass Valley	0	34	33	7	17	2	0	0	36	13	17	23	7	21	0	42	77
In Custody	1	5	1,373	52	48	2	0	1	0	3	1	1	0	0	1	16	84
NSW	69	29,572	31,698	5,816	7,867	1,492	156	837	26,500	10,207	13,061	38,083	24,784	19,212	4,227	51,231	58,442

* For murder the count given is for the number of victims, not incidents.

TABLE 3.3D: NUMBER OF RECORDED CRIMINAL INCIDENTS FOR MAJOR OFFENCES, OVER THE 12 MONTHS TO DECEMBER 2017, NSW LGAs

NSW LGA	Murder *	Domestic violence related assault	Non-domestic violence related assault	Sexual assault	Indecent assault, act of indecency and other sexual offences	Robbery without a weapon	Robbery with a firearm	Robbery with a weapon not a firearm	Break and enter dwelling	Break and enter non-dwelling	Motor vehicle theft	Steal from motor vehicle	Steal from retail store	Steal from dwelling	Steal from person	Fraud	Malicious damage to property
Albury	0	278	329	58	94	9	2	2	367	132	151	623	245	246	14	368	716
Armidale Regional	1	183	208	37	42	10	1	8	278	100	47	223	180	167	20	173	469
Ballina	0	104	184	25	37	4	0	3	123	90	76	253	102	110	15	193	340
Balranald	0	6	14	2	0	0	0	0	5	7	3	7	0	8	0	5	30
Bathurst Regional	0	216	252	60	67	7	2	2	242	77	64	279	126	119	24	234	618
Bayside	1	522	454	74	93	29	5	19	316	104	229	637	418	311	90	1,100	985
Bega Valley	0	107	124	31	36	3	0	0	70	48	19	129	48	50	4	103	276
Bellingen	0	34	44	8	11	0	0	0	23	23	25	37	5	34	4	25	83
Berrigan	0	13	14	6	5	0	0	0	23	15	5	23	7	18	0	19	53
Blacktown	4	2,027	1,665	291	365	136	8	78	1,553	303	851	2,708	1,284	949	281	3,317	3,369
Bland	0	20	17	8	10	0	0	0	12	12	9	18	4	6	0	23	27
Blayney	0	38	25	5	13	0	1	0	26	15	14	26	2	16	2	16	50
Blue Mountains	0	266	223	77	72	10	0	2	164	63	59	194	71	137	26	334	602
Bogan	0	20	25	2	6	0	0	0	9	4	10	21	8	10	1	11	33
Bourke	0	89	51	20	15	1	0	1	106	28	17	69	57	40	1	23	123
Brewarrina	0	43	34	10	8	0	0	0	51	32	5	24	6	12	1	17	47
Broken Hill	0	183	160	24	37	3	0	2	210	62	49	167	46	104	6	62	363
Burwood	1	84	133	13	26	15	0	4	110	35	35	140	305	81	35	401	146
Byron	1	112	253	33	53	6	1	1	110	63	63	184	98	120	49	192	327
Cabonne	0	24	15	14	13	0	0	0	29	22	14	24	2	25	0	44	37
Camden	0	308	143	57	91	6	0	3	150	51	83	237	117	116	4	382	403
Campbelltown	2	804	656	159	178	43	4	23	587	191	272	845	815	392	76	898	1,431
Canada Bay	1	112	135	24	40	6	1	5	260	77	113	397	94	164	31	594	367
Canterbury-Bankstown	5	1,260	1,097	177	201	79	10	39	860	226	667	1,641	583	538	97	2,386	1,922
Carrathool	0	10	11	2	6	0	0	0	7	3	2	11	1	5	0	5	23
Central Coast	5	1,645	1,448	279	394	53	3	35	1,102	407	748	1,741	845	800	171	2,154	3,097
Central Darling	0	87	37	6	5	0	0	0	42	20	8	27	1	6	2	2	51
Cessnock	0	356	252	69	75	5	1	8	400	174	338	513	137	265	34	298	697
Clarence Valley	0	228	256	41	56	4	1	2	188	114	87	230	121	245	24	271	530
Cobar	0	33	43	8	14	0	0	0	24	18	15	44	2	11	0	16	93
Coffs Harbour	0	475	490	110	137	13	0	19	399	209	147	366	189	272	43	423	738
Coolamon	1	15	11	4	4	0	0	0	11	15	10	5	4	8	0	6	15
Coonamble	0	53	41	7	7	4	0	0	98	50	16	53	15	25	2	25	106
Cootamundra-Gundagai	0	56	43	13	13	0	0	1	42	12	10	40	16	36	1	98	97
Cowra	0	63	88	23	23	1	0	0	120	33	12	63	25	59	4	70	148
Cumberland	2	834	802	139	165	90	6	40	827	228	417	1,172	417	404	103	1,849	1,195
Dubbo Regional	0	346	414	79	102	8	0	10	613	144	221	622	339	257	40	378	977
Dungog	0	25	25	6	11	0	0	0	14	10	12	8	1	24	0	24	47
Edward River	0	38	42	11	15	0	0	0	40	15	8	53	18	38	3	27	118
Eurobodalla	0	156	213	35	44	4	0	3	159	70	56	177	87	104	6	147	392
Fairfield	0	728	668	114	143	65	7	53	539	136	356	847	357	250	101	1,433	1,123
Federation	0	32	32	8	11	0	0	0	34	31	11	44	12	48	3	45	101
Forbes	1	58	72	6	13	0	0	0	72	51	21	58	23	62	1	47	162
Georges River	0	438	365	53	79	30	1	5	221	79	139	410	316	182	63	981	723
Gilgandra	0	40	16	9	5	1	0	1	23	9	3	18	7	25	3	20	31
Glen Innes Severn	0	72	78	16	12	3	0	1	69	55	23	34	9	56	2	51	159
Goulburn Mulwaree	0	127	123	49	43	1	0	1	66	29	27	136	143	89	2	169	224
Greater Hume Shire	0	18	13	7	14	1	0	0	26	17	16	27	6	23	1	31	44
Griffith	0	212	139	21	21	3	0	9	157	76	67	315	118	97	9	86	393
Gunnedah	0	62	88	12	12	0	0	1	65	11	28	45	39	76	0	67	152
Gwydir	0	19	15	4	6	0	0	0	6	7	7	12	1	16	0	14	36
Hawkesbury	0	250	192	51	73	4	0	4	132	84	121	252	161	102	19	314	385
Hay	0	17	20	1	4	0	0	0	19	8	5	14	6	14	1	7	84
Hilltops	0	99	98	44	33	2	0	2	58	36	20	51	37	50	1	89	226
Hornsby	0	159	228	60	77	13	0	0	314	104	99	435	335	181	40	629	647
Hunters Hill	0	22	29	7	9	0	1	0	46	13	23	52	4	29	3	55	80
Inner West	1	428	647	105	143	41	5	25	505	168	266	803	375	484	117	1,423	1,327
Inverell	0	86	124	23	31	0	0	0	93	59	36	69	60	100	4	55	267
Junee	0	10	18	5	5	0	0	0	24	19	8	29	3	23	0	3	53
Kempsey	0	219	205	42	44	6	2	2	262	121	96	185	159	168	27	98	382
Kiama	0	34	31	10	15	1	0	2	52	28	38	135	8	39	4	57	92
Ku-ring-gai	0	71	96	38	45	4	0	1	347	76	51	220	51	145	24	459	348
Kyogle	0	47	27	10	5	0	0	0	31	23	12	17	6	21	0	14	63
Lachlan	0	58	44	7	16	0	0	0	37	41	22	32	8	41	1	13	75
Lake Macquarie	1	807	641	188	225	17	4	19	635	294	535	1,174	734	506	75	1,210	1,944

TABLE 3.3D: NUMBER OF RECORDED CRIMINAL INCIDENTS FOR MAJOR OFFENCES, OVER THE 12 MONTHS TO DECEMBER 2017, NSW LGAs

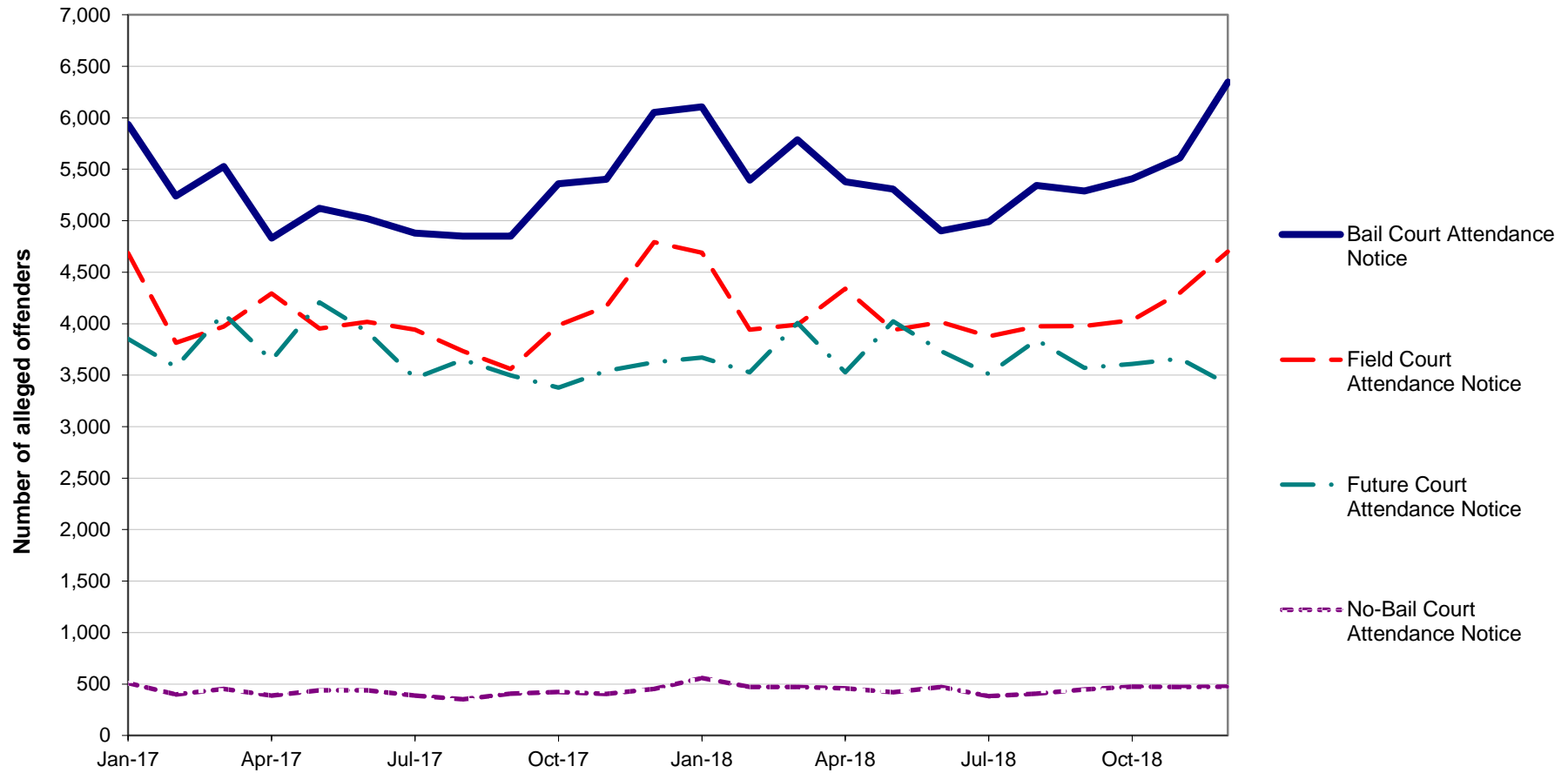
NSW LGA	Murder *	Domestic violence related assault	Non-domestic violence related assault	Sexual assault	Indecent assault, act of indecency and other sexual offences	Robbery without a weapon	Robbery with a firearm	Robbery with a weapon not a firearm	Break and enter dwelling	Break and enter non-dwelling	Motor vehicle theft	Steal from motor vehicle	Steal from retail store	Steal from dwelling	Steal from person	Fraud	Malicious damage to property
Lane Cove	0	33	52	19	13	1	0	0	141	44	34	119	26	57	9	143	107
Leeton	0	63	73	18	22	1	0	1	69	31	31	56	29	42	2	44	121
Lismore	0	175	284	64	59	10	1	3	191	68	105	234	124	162	16	160	458
Lithgow	0	102	123	21	21	2	0	2	118	46	41	75	36	88	8	139	264
Liverpool	1	861	742	136	193	61	5	22	794	225	409	1,224	779	435	108	1,719	1,399
Liverpool Plains	0	35	39	5	15	0	0	0	26	34	19	19	6	33	0	23	102
Lockhart	0	11	12	3	1	0	0	0	4	5	3	6	0	4	0	4	18
Lord Howe Island	0	1	1	0	0	0	0	0	0	2	0	0	0	1	0	2	3
Maitland	0	442	328	82	107	9	2	8	370	155	223	716	326	337	25	488	877
Mid-Coast	1	405	422	109	114	17	0	11	460	278	173	352	233	373	30	368	978
Mid-Western Regional	1	107	115	37	34	1	0	0	107	24	32	123	30	89	6	85	254
Moree Plains	0	219	179	47	38	16	3	12	400	219	118	280	147	157	16	96	650
Mosman	0	51	37	14	17	2	0	2	68	24	21	90	29	62	5	119	123
Murray River	1	14	22	2	3	1	0	1	24	30	12	44	15	22	1	36	59
Murrumbidgee	0	27	16	2	2	0	0	0	12	12	7	11	2	16	0	10	32
Muswellbrook	0	93	97	22	24	4	1	4	155	47	40	108	56	58	6	53	224
Nambucca	0	105	85	32	45	1	0	4	106	85	41	149	58	64	6	86	269
Narrabri	1	76	88	13	11	0	0	0	69	23	35	75	22	62	2	77	169
Narrandera	0	37	31	8	7	0	0	1	88	79	26	65	20	23	0	16	74
Narromine	0	56	45	10	20	1	0	0	58	58	19	53	13	40	4	22	101
Newcastle	1	667	1,095	190	273	28	5	38	973	433	506	2,196	858	749	176	1,652	2,239
North Sydney	0	134	199	33	56	12	1	6	161	75	41	220	168	220	45	513	347
Northern Beaches	1	358	614	99	129	21	0	9	447	206	242	920	489	417	87	1,217	1,138
Oberon	1	20	20	3	0	0	0	0	16	12	3	7	4	11	1	21	47
Orange	0	269	231	60	83	7	0	11	332	83	129	290	261	137	17	204	590
Parkes	1	84	93	18	25	0	0	0	49	41	19	62	32	68	1	76	239
Parramatta	1	730	802	126	187	69	13	22	893	233	320	1,386	873	587	221	2,013	1,400
Penrith	1	1,121	952	207	246	56	4	38	808	219	521	1,382	832	543	137	1,840	1,950
Port Macquarie-Hastings	0	246	259	62	70	7	0	9	191	174	117	245	197	241	20	315	648
Port Stephens	0	314	246	64	93	0	2	3	236	107	128	292	175	178	8	355	650
Queanbeyan-Palerang Regional	1	132	173	31	35	4	0	0	170	60	108	332	163	126	8	197	495
Randwick	2	354	504	76	101	35	3	16	372	99	174	456	289	362	97	993	719
Richmond Valley	0	149	140	32	40	2	0	2	115	50	47	89	63	67	6	112	222
Ryde	0	206	240	47	81	8	3	6	362	98	86	363	542	195	39	860	573
Shellharbour	0	238	190	58	59	11	2	8	216	72	131	353	258	140	15	257	537
Shoalhaven	0	338	393	113	135	6	1	9	411	145	144	424	332	213	13	400	855
Singleton	0	110	103	24	33	5	0	1	89	57	58	102	62	72	1	113	159
Snowy Monaro Regional	0	58	72	23	19	0	0	0	38	12	2	41	11	16	1	62	154
Snowy Valleys	0	67	69	17	28	1	0	0	115	47	28	146	22	71	7	45	211
Strathfield	0	131	153	15	24	5	2	8	188	36	54	252	80	73	45	479	220
Sutherland Shire	2	482	586	115	128	13	0	12	354	116	205	747	541	305	69	852	1,263
Sydney	1	1,014	3,226	247	499	188	8	79	707	583	334	1,164	3,109	1,003	1,216	4,663	2,490
Tamworth Regional	0	345	426	71	86	9	1	7	546	158	122	560	261	261	27	343	910
Temora	0	27	27	3	1	0	0	0	28	7	10	22	12	21	0	16	49
Tenterfield	0	38	44	2	10	0	0	2	36	16	10	28	5	35	1	21	78
The Hills Shire	0	216	262	62	53	5	0	3	362	76	111	498	297	200	34	818	484
Tweed	3	291	291	46	76	6	2	6	233	93	149	354	160	192	32	414	629
Unincorporated Far West	0	1	3	1	2	0	0	2	1	0	1	3	4	1	0	0	3
Upper Hunter Shire	0	27	38	13	19	0	0	0	44	42	24	33	12	40	2	46	92
Upper Lachlan Shire	0	8	13	3	6	0	0	0	11	6	2	13	1	18	0	17	31
Uralla	0	21	9	7	3	0	0	0	11	4	7	11	0	12	0	17	25
Wagga Wagga	1	376	418	64	60	8	0	10	772	165	187	554	364	335	35	319	947
Walcha	1	9	15	7	8	0	0	0	3	1	2	9	1	7	1	4	13
Walgett	0	148	96	15	10	0	0	0	110	39	26	58	23	50	1	34	223
Warren	0	24	22	3	3	0	0	0	22	11	8	21	6	17	3	10	70
Warrumbungle Shire	0	50	41	21	16	0	1	0	40	18	12	26	19	31	2	34	96
Waverley	0	156	322	46	64	12	1	2	164	34	109	232	576	202	52	551	477
Weddin	0	13	6	2	4	0	0	0	4	2	3	6	4	15	1	10	38
Wentworth	1	60	64	14	8	4	0	0	53	31	31	60	6	28	2	17	126
Willoughby	1	77	182	24	63	7	0	5	209	88	47	216	599	125	48	503	315
Wingecarribee	0	103	111	32	43	2	0	0	70	67	38	82	51	77	4	169	324
Wollondilly	0	167	84	28	33	2	0	2	86	41	57	78	21	51	2	152	287
Wollongong	0	655	841	151	171	43	4	27	719	286	363	1,279	902	581	74	860	1,846
Woollahra	0	94	137	26	41	1	0	0	155	30	63	199	82	150	46	328	283
Yass Valley	0	26	26	8	11	0	0	0	26	33	9	16	17	23	0	48	63
In Custody	2	8	1,098	59	29	4	0	0	0	2	1	2	0	0	0	12	86
NSW	53	28,461	32,207	5,949	7,578	1,449	131	850	27,811	10,574	13,195	39,073	24,554	19,550	4,556	49,755	61,185

* For murder the count given is for the number of victims, not incidents.

SECTION 4:

**METHODS OF PROCEEDINGS
AGAINST ALLEGED OFFENDERS**

Figure 4.1: TRENDS IN REFERRAL METHODS FOR ALLEGED OFFENDERS PROCEEDED AGAINST TO COURT, OVER THE 24 MONTHS TO DECEMBER 2018*, NSW



Trends:

Bail Court Attendance Notice shows no statistically significant trend for the 24 month period.

Field Court Attendance Notice shows no statistically significant trend for the 24 month period.

Future Court Attendance Notice shows no statistically significant trend for the 24 month period.

No-Bail Court Attendance Notice shows no statistically significant trend for the 24 month period.

* The date alleged offenders were proceeded against, rather than the date the incident was recorded.

TABLE 4.1: NUMBER, PERCENTAGE AND TREND[^] IN ALLEGED OFFENDERS PROCEEDED AGAINST BY NSW POLICE BY METHOD OF LEGAL PROCEEDINGS OVER THE 24 MONTHS TO DECEMBER 2018*, NSW

<i>Type of process</i>	<i>Number of alleged offenders with proceedings commenced</i>		<i>Trend[^] over the 24 months to December 2018</i>	
	<i>over the 12 months to December 2017</i>	<i>over the 12 months to December 2018</i>	<i>Change</i>	<i>Annual percentage change</i>
Proceeded against to court:				
Bail Court Attendance Notice	63,069	65,865	2,796	Stable
No-Bail Court Attendance Notice	5,053	5,512	459	Stable
Future Court Attendance Notice	44,468	44,097	-371	Stable
Field Court Attendance Notice	48,916	49,780	864	Stable
All proceedings to court	161,506	165,254	3,748	Stable
Proceeded against other than to court:				
Youth Justice Conference	643	796	153	23.8%
Caution Young Offenders Act	7,380	7,029	-351	Stable
Cannabis Caution	5,445	4,787	-658	-12.1%
Criminal Infringement Notice	9,537	8,797	-740	-7.8%
Infringement Notice	718,884	677,514	-41,370	Stable
Liquor Offence Compliance Notice	369	340	-29	Stable
Warning Young Offenders Act	10,485	9,413	-1,072	Stable
All proceedings other than to court	752,743	708,676	-44,067	Stable
All proceedings	914,249	873,930	-40,319	Stable

[^] For further explanation of **trend results**, see page 44, Notes [5] and [6].

* The date alleged offenders were proceeded against, rather than the date the incident was recorded.

TABLE 4.2: NUMBER, PERCENTAGE AND TREND[^] IN ALLEGED OFFENDERS PROCEEDED AGAINST TO COURT BY NSW POLICE FOR MAJOR OFFENCES OVER THE 24 MONTHS TO DECEMBER 2018, NSW**

Offence category	Over the 12 months to December 2017			Over the 12 months to December 2018			Trend [^] over the last 24 months	
	Number proceeded against to court	Total number proceeded against	% proceeded against to court	Number proceeded against to court	Total number proceeded against	% proceeded against to court	Change in number proceeded against to court	Annual percentage change
Murder	76	76	100.0%	94	94	100.0%	18	Stable
Domestic violence related assault	12,385	12,764	97.0%	12,627	13,016	97.0%	242	Stable
Non-domestic violence related assault	7,647	8,866	86.3%	7,594	8,849	85.8%	-53	Stable
Sexual assault	873	873	100.0%	787	787	100.0%	-86	Stable
Indecent assault, act of indecency and other sexual offences	1,406	1,462	96.2%	1,452	1,503	96.6%	46	Stable
Robbery without a weapon	731	740	98.8%	840	848	99.1%	109	14.9%
Robbery with a firearm	112	112	100.0%	147	147	100.0%	35	Stable
Robbery with a weapon not a firearm	557	557	100.0%	532	535	99.4%	-25	Stable
Break and enter dwelling	3,105	3,305	94.0%	3,018	3,215	93.9%	-87	Stable
Break and enter non-dwelling	1,860	2,204	84.4%	1,658	2,021	82.0%	-202	-10.9%
Motor vehicle theft	1,532	1,699	90.2%	1,530	1,676	91.3%	-2	Stable
Steal from motor vehicle	1,333	1,539	86.6%	1,204	1,425	84.5%	-129	Stable
Steal from retail store	5,367	11,138	48.2%	5,774	11,280	51.2%	407	7.6%
Steal from dwelling	638	821	77.7%	611	785	77.8%	-27	Stable
Steal from person	440	498	88.4%	380	427	89.0%	-60	Stable
Fraud	4,525	4,776	94.7%	4,981	5,232	95.2%	456	10.1%
Malicious damage to property	5,480	6,515	84.1%	5,276	6,257	84.3%	-204	Stable

[^] For further explanation of **trend results**, see page 44, Notes [5] and [6].

** The date alleged offenders were proceeded against, rather than the date the incident was recorded.

SECTION 5:

**CLEARED CRIMINAL INCIDENTS
AND WHETHER LEGAL PROCEEDINGS
COMMENCED FOR SELECTED OFFENCES**

TABLE 5.1: NUMBER OF RECORDED CRIMINAL INCIDENTS FOR SELECTED OFFENCES BY WHETHER LEGAL PROCEEDINGS COMMENCED IN 30 DAYS OF REPORTING, OVER THE 24 MONTHS TO NOVEMBER 2018, NSW

Type of offence	Recorded criminal incidents over the 12 months to November 2017				Recorded criminal incidents over the 12 months to November 2018			
	Total number recorded	Cleared within 30 days of reporting			Total number recorded	Cleared within 30 days of reporting		
		Total number cleared [#]	Proceedings commenced within 30 days ^{###}	% proceedings commenced within 30 days		Total number cleared [#]	Proceedings commenced within 30 days ^{###}	% proceedings commenced within 30 days
Murder*	56	35	34	60.7	66	43	43	65.2
Domestic violence related assault	28,329	22,438	17,696	62.5	29,276	23,416	18,561	63.4
Non-domestic violence related assault	32,282	13,640	7,843	24.3	31,832	13,331	7,767	24.4
Sexual assault	5,883	1,189	460	7.8	5,836	1,156	422	7.2
Indecent assault, act of indecency and other sexual offences	7,588	2,220	1,230	16.2	7,809	2,181	1,234	15.8
Abduction and kidnapping	211	93	84	39.8	201	98	90	44.8
Robbery without a weapon	1,428	410	364	25.5	1,486	489	429	28.9
Robbery with a firearm	149	49	45	30.2	158	54	53	33.5
Robbery with a weapon not a firearm	834	288	277	33.2	867	301	286	33.0
Intimidation, stalking and harassment	30,430	18,129	11,419	37.5	31,849	19,050	12,245	38.4
Break and enter dwelling	27,857	2,135	1,771	6.4	26,689	2,130	1,818	6.8
Break and enter non-dwelling	10,641	1,049	945	8.9	10,201	965	851	8.3
Motor vehicle theft	13,216	1,053	870	6.6	13,011	1,023	870	6.7
Steal from motor vehicle	39,146	1,325	1,077	2.8	37,972	1,311	1,061	2.8
Steal from retail store	24,666	11,520	9,755	39.5	24,766	11,492	9,917	40.0
Steal from dwelling	19,643	1,536	734	3.7	19,337	1,419	659	3.4
Steal from person	4,624	501	345	7.5	4,245	488	341	8.0
Stock theft	477	16	7	1.5	419	24	9	2.1
Fraud	49,465	4,179	3,347	6.8	51,387	4,014	3,178	6.2
Arson	6,010	458	179	3.0	5,412	415	194	3.6
Malicious damage to property	61,392	14,674	11,179	18.2	58,864	15,123	11,660	19.8

[#] Total number cleared includes both incidents where proceedings were commenced and those where no proceedings were commenced.

^{###} This includes incidents where a person was either proceeded against to court or proceeded against other than to court.

* Victims for whom incident was cleared.

TABLE 5.2: NUMBER OF RECORDED CRIMINAL INCIDENTS FOR SELECTED OFFENCES BY WHETHER LEGAL PROCEEDINGS COMMENCED IN 90 DAYS OF REPORTING, OVER THE 24 MONTHS TO SEPTEMBER 2018, NSW

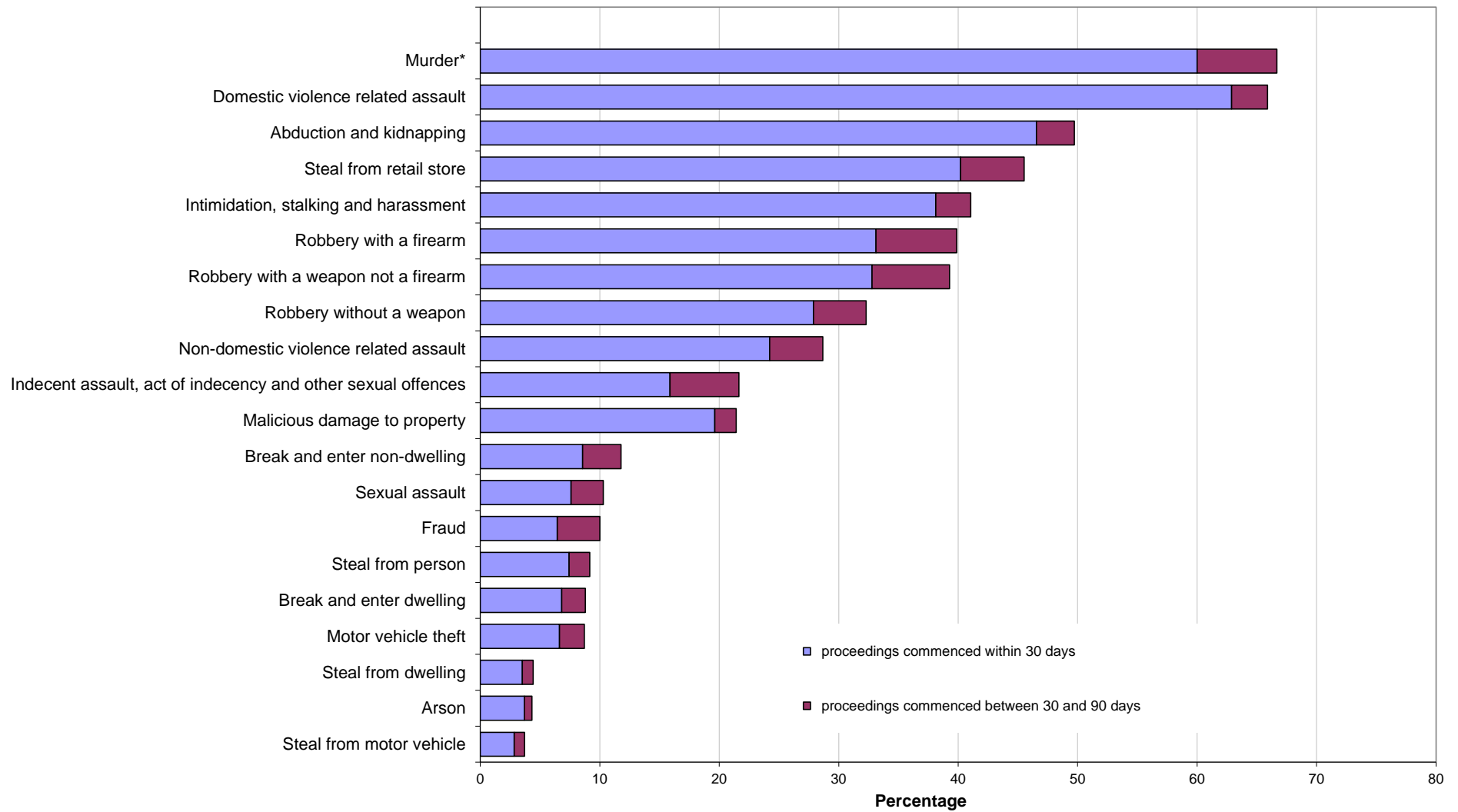
Type of offence	Recorded criminal incidents over the 12 months to September 2017				Recorded criminal incidents over the 12 months to September 2018			
	Total number recorded	Cleared within 90 days of reporting			Total number recorded	Cleared within 90 days of reporting		
		Total number cleared [#]	Proceedings commenced within 90 days ^{###}	% proceedings commenced within 90 days		Total number cleared [#]	Proceedings commenced within 90 days ^{###}	% proceedings commenced within 90 days
Murder*	66	48	46	69.7	60	41	40	66.7
Domestic violence related assault	28,420	23,792	18,649	65.6	29,175	24,630	19,226	65.9
Non-domestic violence related assault	32,117	15,630	9,185	28.6	32,228	15,541	9,241	28.7
Sexual assault	5,839	1,598	640	11.0	5,882	1,666	605	10.3
Indecent assault, act of indecency and other sexual offences	7,426	2,778	1,472	19.8	7,763	2,984	1,681	21.7
Abduction and kidnapping	221	114	99	44.8	189	103	94	49.7
Robbery without a weapon	1,442	511	452	31.3	1,474	548	476	32.3
Robbery with a firearm	145	56	50	34.5	163	67	65	39.9
Robbery with a weapon not a firearm	843	338	326	38.7	878	363	345	39.3
Intimidation, stalking and harassment	30,313	19,788	12,346	40.7	31,656	20,552	12,995	41.1
Break and enter dwelling	27,966	2,780	2,286	8.2	27,195	2,875	2,390	8.8
Break and enter non-dwelling	10,758	1,409	1,262	11.7	10,341	1,354	1,217	11.8
Motor vehicle theft	13,313	1,437	1,162	8.7	12,908	1,380	1,125	8.7
Steal from motor vehicle	39,078	1,717	1,420	3.6	37,999	1,748	1,405	3.7
Steal from retail store	24,359	12,637	10,753	44.1	24,617	12,996	11,208	45.5
Steal from dwelling	20,071	1,809	865	4.3	19,393	1,783	859	4.4
Steal from person	4,648	636	452	9.7	4,264	561	391	9.2
Stock theft	482	22	8	1.7	442	32	8	1.8
Fraud	48,647	6,130	4,878	10.0	51,460	6,437	5,152	10.0
Arson	5,984	525	220	3.7	5,683	510	245	4.3
Malicious damage to property	61,513	16,358	12,398	20.2	59,402	16,552	12,724	21.4

[#] Total number cleared includes both incidents where proceedings were commenced and those where no proceedings were commenced.

^{###} This includes incidents where a person was either proceeded against to court or proceeded against other than to court.

* Victims for whom incident was cleared.

Figure 5.1: PERCENTAGE OF RECORDED CRIMINAL INCIDENTS FOR SELECTED OFFENCES WHERE LEGAL PROCEEDINGS COMMENCED WITHIN 30 AND 90 DAYS, OVER THE 12 MONTHS TO SEPTEMBER 2018, NSW



* For murder the data are counts of recorded victims, not criminal incidents.

APPENDICES

APPENDIX 1: TRENDS IN RECORDED CRIMINAL INCIDENTS FOR NSW

[1] Irrespective of how trends in recorded crime are presented, their interpretation is a difficult task. The recorded criminal incident data presented in this report are based on information derived from the NSW Police Force Computerised Operational Policing System (COPS), so only those incidents which are reported to, or detected by, police are included. The trends in recorded crime shown in this report will, therefore, reflect movements in the underlying factors which influence the detection, reporting and recording of crime, as well as changes in the true level of crime in the community.

[2] An alternative measure of the level of crime in Australia is available from crime victim surveys, for example the national Crime Victimization Survey by the Australian Bureau of Statistics (ABS)¹. As well as providing an estimate of the victimisation rate at the State level for a selected set of offences, this survey estimates the proportion of crimes which are not reported to police, and are therefore not recorded in the official statistics. In particular, personal crimes, such as assault and robbery, are less likely to be reported than crimes which involve households. These surveys generally find that about half of physical assault victims aged 15 and over report the incident to police whereas break-ins are reported to police approximately three quarters of the time. Given that some offences have low reporting rates, it is possible that changes in recorded crime rates over time for these offences may be reflecting changes in reporting rates.

[3] Public willingness to report crime, however, is just one of the extraneous factors which can affect trends in recorded crime. Shifts in policing policy can also have a marked effect on the number of recorded drug offences, cases of offensive behaviour or of receiving stolen goods. For these offences, therefore, recorded rates probably do not accurately reflect actual rates. For this reason, the more detailed comparisons of crime rates and examination of trends in this document are restricted to offence categories which are more likely to be reported to, rather than detected by police.

[4] The interpretation of trends in official reports of crime can be considerably more difficult than the interpretation of trends in unemployment or inflation statistics. The ease with which recorded crime statistics can be misunderstood creates a temptation to offer an authoritative explanation for each major crime trend. Indeed, in many instances it is simply impossible to state with any assurance why a particular trend has appeared. This report, therefore, confines itself to identifying and describing trends in recorded crime, rather than explaining them.

[5] For each offence category or subcategory (except murder), a statistical test for trend was applied to the monthly numbers of recorded criminal incidents over the relevant period. In the case of murder, the statistical test for trend was applied to the monthly numbers of victims over the period. The trend test used was Kendall's rank-order correlation test (see, for example, Conover, W.J. 1980, *Practical Non-Parametric Statistics*, 2nd ed, John Wiley and Sons, pp 256-260). A two-tailed test was used to determine whether there had been an increasing or decreasing trend in the recorded numbers of criminal incidents over the relevant period covered in the report. Some month to month variations in the numbers of recorded incidents could be due in part to seasonal factors. The test for trend is not sensitive to seasonal variations; it is sensitive only to a generally increasing or generally decreasing trend over the time period examined.

[6] For the trend tests throughout this publication, where a statistically significant trend was found ($p < .05$), the extent of the trend is indicated by the percentage change in the total number of recorded criminal incidents between the latest two consecutive 12-month periods for 24 month tests; and the average annual percentage change between the first 12-month period and the latest 12-month period for longer tests. A trend test was not performed if there were fewer than 20 incidents in any of the years for the period in question. The result ' . ' indicates that a trend test was not performed. A non-significant test result ($p > .05$) is denoted by 'Stable' or by 'ns' in some larger LGA tables.

[7] In order to present an overview of crime trends in NSW the information in Section 1 relates to aggregate violent and property crime. The State graphs for violent and property offences are plotted as monthly rates² per 100,000 population. The State graph for violent offences shows distinct seasonality and the 12-month moving average (light grey line) indicates a downward path since 2004, which has stabilized over the past five years, whilst the property offences graph and the 6-month moving average (light grey line) both indicate a strong downward path since about 2000. Violent offences include: murder, attempted murder, manslaughter, assault - domestic violence related, assault - non-domestic violence related, assault police, robbery without a weapon, robbery with a firearm, robbery with a weapon not a firearm, sexual assault and indecent assault / act of indecency / other sexual offences. Property offences include: break and enter dwelling, break and enter non-dwelling, motor vehicle theft, steal from motor vehicle, steal from retail store, steal from dwelling, steal from person, stock theft, other theft and fraud.

[8] The ratio to NSW rate statistics are a comparison of a NSW regional rate per 100,000 population to the NSW rate per 100,000 population². A ratio of one indicates parity with the NSW rate. Ratios indicating double the NSW rate (or more) before rounding are highlighted in red, whilst ratios indicating half the NSW rate (or less) before rounding are highlighted in yellow.

1. Australian Bureau of Statistics *Crime Victimization, Australia, Cat. No. 4530.0, ABS, Sydney. See the Australian Bureau of Statistics website for the latest version available at www.abs.gov.au*

2. For the rate calculations, specialised population data were prepared and provided to BOCSAR by the Australian Bureau of Statistics.

APPENDIX 2: DEFINITIONS AND EXPLANATORY NOTES

The data in this report are extracted from the NSW Police Force's Computerised Operational Policing System (COPS). This system is used for record-keeping for all police operations, not just for criminal matters.

In this report:

- the counting units are recorded *criminal incidents* rather than recorded *offences* (except for murder and manslaughter, where the counting units are victims); and
- the data are categorised by date of *reporting* to police (or date of detection by police) rather than by date of *occurrence* of the offence (except for alleged offender data, where the data is categorised by date the alleged offender was proceeded against).

RECORDED CRIMINAL INCIDENTS

A criminal incident is defined as an activity detected by or reported to police which:

- involved the same offender(s);
- involved the same victim(s);
- occurred at the one location;
- occurred during one uninterrupted period of time;
- falls into one offence category;
- falls into one incident type (for example, 'actual', 'attempted', 'conspiracy').

One incident may involve two offenders assaulting the same victim. This would be recorded as one assault incident. Alternatively, suppose a man reports to police that he found his neighbour in the process of damaging his car and, when confronted, the neighbour assaulted him. For such an event, two criminal incidents are recorded because two distinct offence types are involved (malicious damage to property and assault) even though the same parties were involved at the same time and in the same place.

RECORDED VICTIMS

For murder and manslaughter only, the counting units used are victims. Under the definition of a criminal incident (same parties, same time, same place, same offence and same incident type) one murder or manslaughter incident could involve two or more persons being killed. Because of the seriousness of these offences and their relatively small numbers, it is considered to be more appropriate to count the number of victims, rather than the number of criminal incidents. Hence, where one murder incident involves a person killing six people, six murder victims are counted.

OFFENCE CATEGORIES

The classification of offences in this report is broadly based on the Australian and New Zealand Standard Offence Classification (ANZSOC) devised by the Australian Bureau of Statistics (*ABS 2011, third edition, Cat. No. 1234.0*).

For all types of offence classifications used in the report, Appendix 3 lists the offence categories included in the classification. The original offence incident categories are those used by the NSW Police Force and do not necessarily correspond exactly with offences as defined in legislation.

MAJOR OFFENCE CATEGORIES

Major offence categories include the most serious personal violence and property offences. The most serious of these offences is *murder* for which the incident count is the number of victims. Assault offences include the two major offence categories of *domestic violence related assault* and *non-domestic violence related assault*. All sexual offences are categorised by the two major offence types, either as *sexual assault* or *indecent assault, act of indecency and other sexual offences*.

Robbery offences are sorted into three categories by use of weapon: *robbery with a firearm*, *robbery with a weapon not a firearm* or *robbery without a weapon*. The serious theft offences in this group start with the burglary categories of *break and enter - dwelling* and *break and enter - non-dwelling* followed by *motor vehicle theft* and *steal from motor vehicle*. Other theft offences included in the 17 major offences are *steal from retail store*, *steal from dwelling*, *steal from person* and *fraud*. The final property offence listed as a major offence is *malicious damage to property*.

APPENDIX 2: DEFINITIONS AND EXPLANATORY NOTES *continued*

COUNTING PERIOD

Criminal incidents are included in the counting period in which they were reported to or detected by police.

In most cases criminal incidents are recorded on COPS on the day of reporting. However there may be some time delay before the incident gains the status of accepted and verified (which are necessary conditions for inclusion in this report). It is therefore possible for some updating of data to occur. That is, data extracted for a specified period of time may differ according to the date of extraction of the data.

In recent years some historic murders have been re-entered on the COPS system after being referred to the unsolved homicide squad. Murders that were first reported to NSW Police prior to the introduction of COPS in 1995 but recorded on COPS in recent years are excluded from the statistics. Murders which took place prior to 1995 but were first reported to Police in or after 1995 are included in the statistics.

PROCEEDINGS AGAINST ALLEGED OFFENDERS

Police may proceed against alleged offenders through a variety of legal or other processes. Alleged offenders who are not legally proceeded against are not included in this report. Most alleged offenders are referred to the NSW Criminal Courts. The more serious offences are dealt with by way of a Bail Court Attendance Notice (CAN) or a No-Bail CAN. In these instances, the alleged offender is arrested, taken to a police station, fingerprinted and the details of the person and all charges are recorded. A Bail CAN is used when a bail determination is required and a No-Bail CAN is used when a bail determination is not required.

Following changes to the Bail Act in May 2014, No-Bail CANs are used almost solely for incidents of 'Breach of bail conditions' and no bail determination is required because the original determination stands until a new determination is made by the court. Alternatively a Field CAN may be issued by police at other locations. A Future CAN is used for less serious offences.

Some alleged offenders are proceeded against but diverted from the criminal court system. For many minor offences police can issue Infringement Notices. By paying the prescribed penalty the offender avoids having to go to court. Under the *Young Offenders Act 1997*, a juvenile offender can be issued with either a warning, a caution or referred to a youth justice conference.

Youth Justice Conference and cautions data in previous reports have included juvenile offenders initially proceeded against to court by Police and then referred to a conference or given a caution under the *Young Offenders Act* by the court. From the 2015 report, they are now counted as being proceeded against to court by Court Attendance Notice as that was the method of proceeding used by the Police. Consequently data in this report is not comparable with data in previously published reports. Comparable data for previous years is available on request.

Data on warnings under the *Young offenders Act*, is available from January 2010 onwards. Due to changes in how warnings are recorded, this data series can not be compared with warning data previously published. A youth justice conference is a face-to-face meeting between offenders, victims and their support persons. The offending behaviour is discussed and an outcome plan for the offender negotiated. Note that both the police and the courts can refer a young person to a youth justice conference. However, the number of alleged offenders proceeded against by way of a youth justice conference, as shown in Table 4.1, includes only police referrals to a youth justice conference.

Since mid-2008, Police have issued compliance notices for breaches of liquor licensing regulations/legislation. Commonly these are for relatively minor breaches eg fail to display regulated signs. Liquor Offence Compliance Notices have been added to the recorded crime collection from the 2015 report. Consequently data in this report is not comparable with data in previously published reports. Comparable data for all years is available on request.

Each offender or alleged offender appears only once in the table for each event. Note that multiple criminal incidents may be associated with a single event. The processes are arranged in a hierarchy with the offender or alleged offender appearing in the most serious category where multiple incidents are involved. For example if an event involves two incidents and the alleged offender is charged for one incident but receives a caution for the second incident, the alleged offender appears only in the relevant 'proceeded against to court' category.

APPENDIX 2: DEFINITIONS AND EXPLANATORY NOTES *continued*

PROCEEDINGS AGAINST ALLEGED OFFENDERS *continued*

It should be noted that in previous annual recorded crime reports, data on alleged offenders were categorised by date of reporting to police (or date the incident was detected by police). Given there can be a delay between an event being recorded by police and police commencing legal proceedings this resulted in fewer alleged offenders being counted, particularly during the last three months of the reporting period. For this reason, since the 2017 annual report, alleged offender data is categorised by the date the alleged offender was proceeded against. Therefore in Section 4 the year refers to the year in which alleged offenders were proceeded against. It does not refer to the year in which a criminal incident or incidents were reported to police. For example, if an incident was reported to police in 2016 but the alleged offender was not apprehended and charged until 2017, the alleged offender is counted in 2017. As such, Section 4 of this report is not comparable with alleged offender data published prior to the 2017 annual report. Comparable data for all years is available on request.

CLEARED CRIMINAL INCIDENTS

A cleared criminal incident is one, which, in the view of police, has been satisfactorily cleared by the commencement of legal proceedings or otherwise.

An incident is cleared by the commencement of legal proceedings when police have laid a charge or an information against at least one person. The information may have been laid with a view to the issuing of a warrant, Future CAN or other process for the purpose of bringing an offender before the court.

A criminal incident is cleared other than by commencement of legal proceedings when, under normal circumstances, a charge or information would have been laid against at least one person, but, for a variety of reasons, police have been unable to make an arrest, despite knowing the identity of the offender and having sufficient evidence to support a charge. Examples of situations in which an offence may be cleared other than by charge include the following:

- the offender is a juvenile and is cautioned;
- the offender has died before a charge is made or information laid;
- the offender has been committed to a psychiatric institution and is unlikely to be released;
- there is an obstacle to charging, such as diplomatic immunity;
- the complainant or essential witness is dead and proceedings would be aborted;
- the offender is serving a sentence and police consider that no useful purpose would be served by prosecution.

The offence types included in these tables are those where the crime is likely to have been reported to police, rather than discovered or detected by police. Offence types where the numbers of recorded criminal incidents are influenced by police law enforcement activity (drug offences, for example) are excluded. For such offence types, the clear-up percentages are very high because clearing the offence generally occurs simultaneously with its detection (that is, an arrest is made when the crime is discovered). This report contains criminal incidents cleared within 30 and 90 days after the incident was reported to the NSW Police Force.

The clear-up status after 30 days could not be determined for any offences reported in the latest month. Hence, Table 5.1 is for the 24-month period ending one month before the quarterly reporting period. Similarly, the clear-up status after 90 days could not be determined for any offences reported in the latest three months. Hence, Table 5.2 and Figure 5.1 is for the 24-month period ending three months before the quarterly reporting period.

REGIONAL STATISTICS

Statistics are provided on the number of criminal incidents (victims for murder) recorded for each of the Statistical Areas (SAs) of NSW as defined by the Australian Bureau of Statistics (ABS).

Recorded criminal incidents which occurred in correctional, detention or remand centres, however, are not counted in the SA in which the incident occurred. Appendix 4 provides maps indicating the location of each SA. Appendix 5 lists the Local Government Areas (LGAs using 2017 boundaries) within each of the SAs. Note that LGA boundaries change from time to time. A criminal incident is counted within a particular region when the location of the offence falls within that region.

For the rate calculations, specialised population data were prepared and provided to BOCSAR by the Australian Bureau of Statistics.

APPENDIX 3: BOCSAR OFFENCES MAPPED TO POLICE INCIDENT CATEGORIES

BOCSAR offence	NSW Police Force incident categories
Homicide	
Murder	Murder
Attempted murder	Murder – attempted Shoot with intent to murder
Murder accessory, conspiracy	Murder – conspiracy Murder – solicit
Manslaughter – not driving	Manslaughter
Assault	
	<i>Includes any of the following offences disaggregated by whether or not police have flagged the incident as domestic violence related:</i>
Domestic violence related	Actual bodily harm Assault common Grievous bodily harm (including malicious wounding) Shoot with intent other than to murder Spike drink/food
Non-domestic violence related	Actual bodily harm Assault common Grievous bodily harm (including malicious wounding) Shoot with intent other than to murder Spike drink/food
Assault Police	Assault Police officer
Sexual offences	
Sexual assault	Sexual assault – adult victim (16+ years old) Sexual assault – child victim, reported when adult Sexual assault – child victim, reported when child
Indecent assault, act of indecency and other sexual offences	Act of indecency Aggravated act of indecency Indecent assault – adult victim (16+ years old) Indecent assault – child victim, reported when child Indecent assault – child victim, reported when adult Bestiality Carnal knowledge Grooming/procuring Incest Indecent communication Peep or pry Wilful and obscene exposure Other sexual offence
Abduction and kidnapping	Kidnapping/Abduction <input type="checkbox"/> People trafficking

APPENDIX 3: BOCSAR OFFENCES MAPPED TO POLICE INCIDENT CATEGORIES

BOCSAR offence	NSW Police Force incident categories
Robbery	
Robbery without a weapon	<i>Includes any of the following offences in which no weapon was recorded:</i> Demand money with menaces Robbery Robbery with aggravation Robbery with wounding Other robbery
Robbery with a firearm	<i>Includes any of the following offences in which a firearm was recorded as a weapon:</i> Armed robbery Demand money with menaces Robbery Robbery with aggravation Robbery with wounding Other robbery
Robbery with a weapon not a firearm	<i>Includes any of the following offences in which a non firearm weapon was recorded:</i> Armed robbery Demand money with menaces Robbery Robbery with aggravation Robbery with wounding Other robbery
Blackmail and extortion	Extortion/Blackmail
Intimidation, stalking and harassment	Bullying/harassment or intimidation Stalking (since 2017) Child approach (since 2017) Riot and affray Telecommunications offence (<i>includes nuisance phone calls</i>) Threats against Police Violent disorder Unlawful assembly
Other offences against the person	Labour exploitation (<i>includes sexual servitude</i>) Malicious damage with intent to injure/endanger Negligent act cause grievous bodily harm Other offence against the person
Theft	
Break and enter – dwelling	<i>Dwelling includes premises where people reside such as house, home unit, caravan, tent as well as any attachment such as garage, shed, yard and garden.</i> Break/Enter and steal Break/Enter and commit other felony Break/Enter intent to steal Break/Enter intent to commit other felony

APPENDIX 3: BOCSAR OFFENCES MAPPED TO POLICE INCIDENT CATEGORIES

BOCSAR offence	NSW Police Force incident categories
Theft continued:	
Break and enter – non-dwelling	<i>Non-dwelling includes commercial and government premises.</i> Break/Enter and steal Break/Enter and commit other felony Break/Enter intent to steal Break/Enter intent to commit other felony
Receiving or handling stolen goods	Receiving Goods in custody Possess property stolen outside NSW
Motor vehicle theft	Theft of motor cars, motor cycles, and other vehicles / vessels Rebirthing vehicles / vessels
Steal from motor vehicle	Steal from motor vehicle
Steal from retail store	Steal from retail store
Steal from dwelling	Steal from dwelling Other stealing <i>occurring in a residential dwelling</i>
Steal from person	Steal from person
Stock theft	Steal stock (Non-domestic animal)
Fraud	Company/corporate offence Computer crime Copyright/Intellectual property/Trademark Corrupt commission/practices Corrupt payment (receive or pay) Counterfeit currency Deception offence Embezzlement Fail to pay Forgery (since 2017) Fraudulent misappropriation Larceny clerk/servant/bailee Make/use false instrument Misappropriate cheques/funds Possess false instrument Publish false misleading statement Receiving (fraud related) Scams - obtain funds (since 2017) Scams - selling (since 2017) Unauthorised access of funds (since 2017) Deal/supply false identity documents (since 2017) Deal/supply false information (since 2017) Equipment to make false identity documents (since 2017) Make false identity documents (since 2017) Possess false identity documents (since 2017) Possess identity information (since 2017) Use false identity documents (since 2017) Other fraud

APPENDIX 3: BOCSAR OFFENCES MAPPED TO POLICE INCIDENT CATEGORIES

BOCSAR offence	NSW Police Force incident categories
Theft continued: Other theft	Steal from dwelling <i>occurring somewhere other than a residential or non-residential dwelling</i> (e.g. from hostels, motels, boarding houses etc) Steal domestic animal or bird Steal from marine vessel Steal vessel Other stealing <i>occurring somewhere other than a dwelling</i> (e.g. in outdoor/public places)
Arson	<i>Fire incident where classified as deliberate:</i> Bushfire Structure Vehicle (e.g. aircraft/motor vehicle/train/vessel) Other commodity
Malicious damage to property	Graffiti Malicious damage to property Public place – damage fountain/wall etc. Public place – damage shrine/monument
Drug offences	
Possession and/or use of cocaine	Possess drug <i>where drug type is cocaine</i> Use or administer drug <i>where drug type is cocaine</i> Item/object found <i>where drug type is cocaine</i>
Possession and/or use of narcotics	Possess drug <i>where drug type is narcotics</i> Use or administer drug <i>where drug type is narcotics</i> Item/object found <i>where drug type is narcotics</i>
Possession and/or use of cannabis	Possess drug / plant <i>where drug type is cannabis</i> Use or administer drug <i>where drug type is cannabis</i> Item/object found <i>where drug type is cannabis</i>
Possession and/or use of amphetamines	Possess drug <i>where drug type is amphetamines</i> Use or administer drug <i>where drug type is amphetamines</i> Item/object found <i>where drug type is amphetamines</i>
Possession and/or use of ecstasy	Possess drug <i>where drug type is ecstasy</i> Use or administer drug <i>where drug type is ecstasy</i> Item/object found <i>where drug type is ecstasy</i>
Possession and/or use of other drugs	Possess drug <i>where drug type is not cocaine, narcotics, cannabis, amphetamines or ecstasy</i> Use or administer drug <i>where drug type is not cocaine, narcotics, cannabis, amphetamines or ecstasy</i> Item/object found <i>where drug type is not cocaine, narcotics, cannabis, amphetamines or ecstasy</i>
Dealing, trafficking in cocaine	Supply drug <i>where drug type is cocaine</i>
Dealing, trafficking in narcotics	Supply drug <i>where drug type is narcotics</i>

APPENDIX 3: BOCSAR OFFENCES MAPPED TO POLICE INCIDENT CATEGORIES

BOCSAR offence	NSW Police Force incident categories
Drug offences continued:	
Dealing, trafficking in cannabis	Supply drug/plant <i>where drug/plant type is cannabis</i>
Dealing, trafficking in amphetamines	Supply drug <i>where drug type is amphetamines</i>
Dealing, trafficking in ecstasy	Supply drug <i>where drug type is ecstasy</i>
Dealing, trafficking in other drugs	Supply drug/plant <i>where drug/plant type is not cocaine, narcotics, cannabis, amphetamines or ecstasy</i>
Cultivating cannabis	Cultivation
Manufacture drug	Manufacture drug
Importing drugs	Import drug/plant
Other drug offences	Forge and/or utter prescription Possess drug utensil Other drug detection/seizure offence
Prohibited and regulated weapons offences	Bomb hoax or threat Discharge firearm into premises Licence offence Firearms dealer offence Firearms not ensure safekeeping Improper storage of explosives Person search - Item/object found <i>where item/object is a weapon</i> Possess explosive/dangerous article Possess prohibited weapon/article Possess shortened firearm Possess whilst unlicensed Sell prohibited weapon/article Shorten firearm Trespass with firearm Unlawful handling/access/supply of explosives Unlawfully discharge firearm Use firearm under influence Use prohibited weapon/article Other explosives offence Other firearm licencing offence Other firearm offence Other prohibited weapon/article offence
Disorderly conduct	
Trespass	Trespass Remain inclosed lands
Offensive conduct	Offensive behaviour
Offensive language	Offensive language
Criminal intent	Armed with intent Disguised with intent Enter land with intent Intent to repeat indictable offence Possess implements

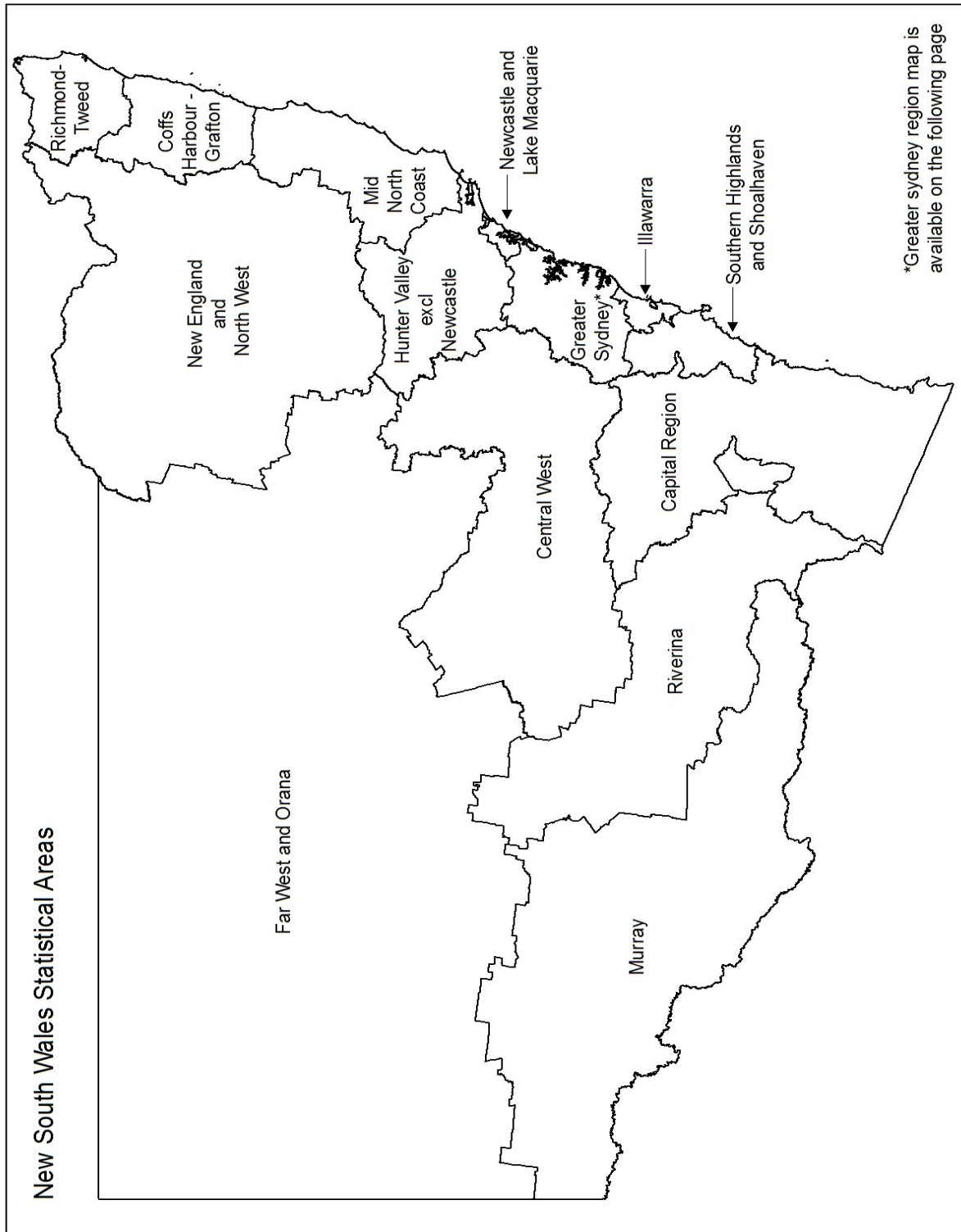
APPENDIX 3: BOCSAR OFFENCES MAPPED TO POLICE INCIDENT CATEGORIES

BOCSAR offence	NSW Police Force incident categories
Betting and gaming offences	Conduct/play illegal betting Conduct/play illegal game Own/manage premises – betting Own/manage premises – gaming Other gaming offence
Liquor offences	Consume alcohol in alcohol-free zone Consume/possess alcohol in public by minor Licensing legislation offence: – Offence by licensee/employee/secretary – Offence by minor – Offence by customer (not minor) – Supply liquor to juvenile – Offence against registered clubs legislation
Pornography offences	Possess/disseminate child pornography Possess/publish indecent material
Prostitution offences	Soliciting/prostitution in public Prostitution – premises Prostitution – live off earnings Child prostitution Other vice offence
Against justice procedures	
Escape Custody	Escapee – Corrective Services custody Escapee – Department of Community Services custody Escapee – Police custody Escapee – Other custody
Breach Apprehended Violence Order	Breach Apprehended Violence Order – domestic Breach Apprehended Violence Order – personal
Breach bail conditions	Breach bail conditions Breach control order
Fail to appear	Fail to appear
Resist or hinder officer	Refuse direction Refuse direction continue intoxication and disorder Refuse direction intoxicated person Refuse to be searched Refuse to produce object Resist/hinder officer
Other offences against justice procedures	Breach of recognizance Contravene Child Protection Prohibition Order (CPPO) Other judicial offence
Transport regulatory offences	Transport offence (<i>includes offences on the rail network such as travelling without a valid ticket, smoking, drinking or using offensive language on a train or railway land</i>) Buffer riding

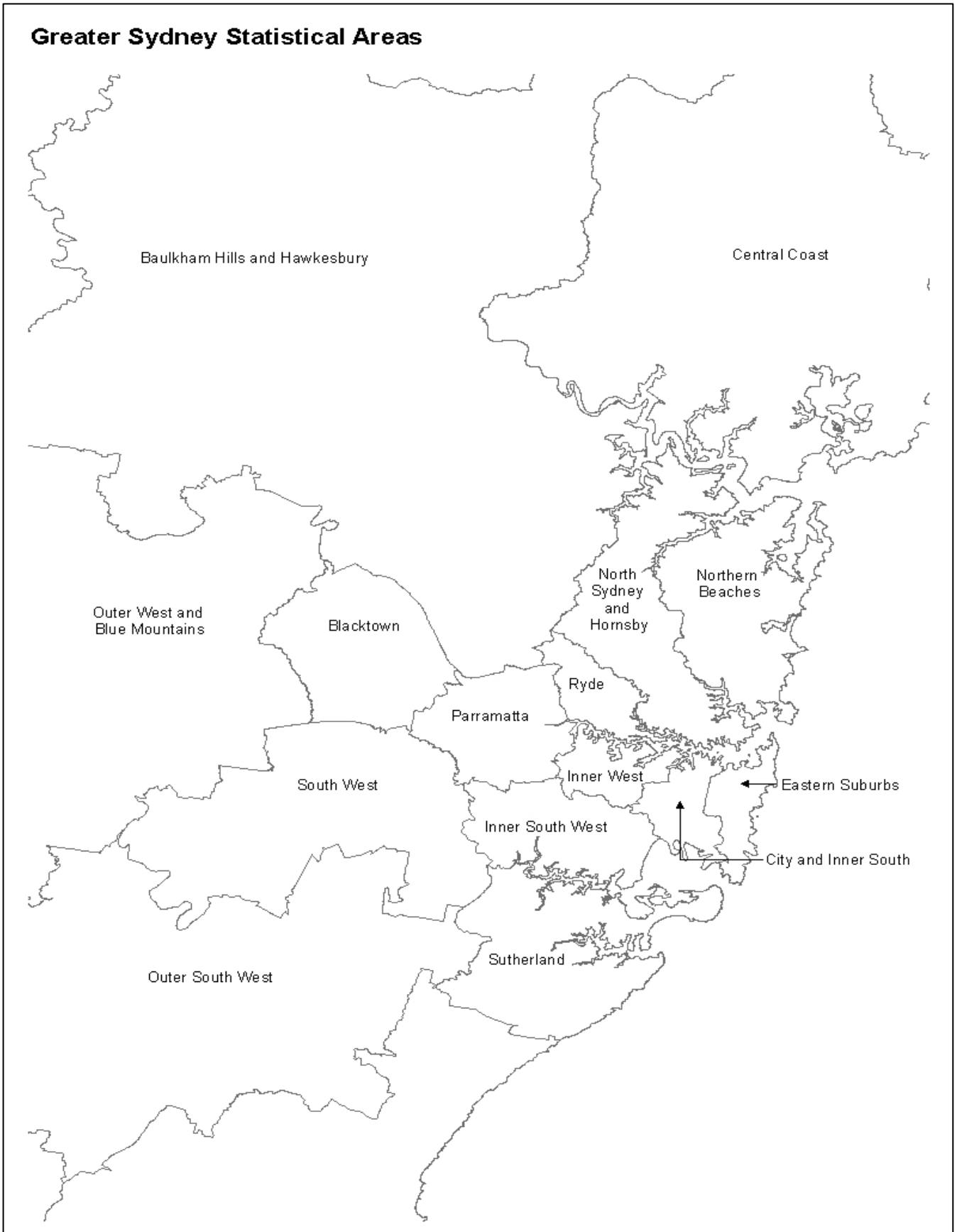
APPENDIX 3: BOCSAR OFFENCES MAPPED TO POLICE INCIDENT CATEGORIES

<i>BOCSAR offence</i>	<i>NSW Police Force incident categories</i>
Other offences	Animals - Dog offences Cyber Breach/Attack Family law offence Immigration/customs offence Obstruction Offence against transport service Other street offences (carry cutting weapon, offensive implement) Public mischief Terrorism offences (e.g. associating with terrorist organisations, financing terrorism etc.) Other miscellaneous offences Offences under various acts: <i>Animals - Prevention Of Cruelty Acts</i> <i>Bush Fire Act</i> <i>Child Protection Act</i> <i>Local Government Act</i> <i>Marine/Waterway Act</i> <i>Pawnbrokers Act</i> <i>Postal Services Act</i> <i>Security Industry Act</i> <i>Sydney Harbour Bridge Act</i> <i>Tattoo Parlours Act</i>

APPENDIX 4: NSW & GREATER SYDNEY STATISTICAL AREA MAPS



APPENDIX 4: NSW & GREATER SYDNEY STATISTICAL AREA MAPS



APPENDIX 5: LGAs IN GREATER SYDNEY STATISTICAL AREAS***Greater Sydney Statistical Areas***

<i>Baulkham Hills and Hawkesbury</i> Hawkesbury* The Hills Shire*	<i>Blacktown</i> Blacktown	<i>Central Coast</i> Central Coast
<i>City and Inner South</i> Sydney*	<i>Eastern Suburbs</i> Randwick* Waverley Woollahra	<i>Inner South West</i> Bayside* Canterbury-Bankstown* Georges River
<i>Inner West</i> Burwood Canada Bay Inner West* Strathfield*	<i>North Sydney and Hornsby</i> Hornsby* Ku-ring-gai Lane Cove Mosman North Sydney Willoughby	<i>Northern Beaches</i> Northern Beaches
<i>Outer South West</i> Camden* Campbelltown* Wollondilly*	<i>Outer West and Blue Mountains</i> Blue Mountains* Penrith*	<i>Parramatta</i> Cumberland* Parramatta*
<i>Ryde</i> Hunters Hill Ryde*	<i>South West</i> Fairfield* Liverpool*	<i>Sutherland</i> Sutherland Shire*

* These LGAs span across two or more Statistical Areas.

These LGAs are listed under the Greater Sydney Statistical Areas which contain the largest area of each LGA.

APPENDIX 5: LGAs IN NSW REGIONAL STATISTICAL AREAS***NSW Regional Statistical Areas******Capital Region***

Bega Valley
Eurobodalla
Goulburn Mulwaree
Hilltops
Queanbeyan-Palerang Regional
Snowy Monaro Regional*
Upper Lachlan Shire
Yass Valley*

Central West

Bathurst Regional
Bland*
Blayney
Cabonne*
Cowra
Forbes
Lachlan*
Lithgow
Mid-Western Regional*
Oberon*
Orange
Parkes
Weddin

Coffs Harbour - Grafton

Bellingen*
Clarence Valley*
Coffs Harbour

Far West and Orana

Bogan
Bourke
Brewarrina
Broken Hill
Central Darling
Cobar
Coonamble
Dubbo Regional*
Gilgandra
Narromine
Unincorporated Far West
Walgett
Warren
Warrumbungle Shire*

Hunter Valley excluding Newcastle

Cessnock
Dungog
Maitland*
Muswellbrook
Port Stephens*
Singleton*
Upper Hunter Shire*

Illawarra

Kiama*
Shellharbour
Wollongong

Mid North Coast

Kempsey
Lord Howe Island
Mid-Coast*
Nambucca*
Port Macquarie-Hastings

Murray

Albury
Balranald
Berrigan
Edward River
Federation*
Greater Hume Shire*
Hay
Murray River
Wentworth

New England and North West

Armidale Regional*
Glen Innes Severn
Gunnedah
Gwydir
Inverell
Liverpool Plains*
Moree Plains
Narrabri
Tamworth Regional
Tenterfield
Uralla
Walcha

Newcastle and Lake Macquarie

Lake Macquarie*
Newcastle

Richmond - Tweed

Ballina
Byron
Kyogle
Lismore
Richmond Valley*
Tweed

Riverina

Carrathool*
Coolamon
Cootamundra-Gundagai
Griffith
Junee
Leeton
Lockhart*
Murrumbidgee*
Narrandera
Snowy Valleys*
Temora
Wagga Wagga

Southern Highlands and Shoalhaven

Shoalhaven*
Wingecarribee*

* These LGAs span across two or more Statistical Areas.

These LGAs are listed under the NSW Regional Statistical Areas which contain the largest area of each LGA.