

# **NEW SOUTH WALES RECORDED CRIME STATISTICS**

Quarterly Update  
**June 2018**

**NSW  
Statistical Areas  
and  
Local Government Areas**

**NSW Bureau of Crime Statistics and Research**

## **ACKNOWLEDGEMENTS**

The production of this report was greatly assisted by officers within the NSW Police Force. Special thanks are due to officers in Business and Technology Services and in Corporate Information, Executive Support Group. The following officers of the NSW Bureau of Crime Statistics and Research contributed significantly to the production of this report. Thanks to Neil Marott for processing the data contained in the report, Derek Goh for preparing the report and Jessie Holmes for reviews and presentation improvements.

2018

Published by the NSW Bureau of Crime Statistics and Research  
Department of Justice  
Level 1  
Henry Deane Building  
20 Lee St  
Sydney NSW 2000  
Australia

Phone: + 61 (2) 8346 1100  
Fax: + 61 (2) 8364 1298  
Email: [bcsr@justice.nsw.gov.au](mailto:bcsr@justice.nsw.gov.au)  
Website: [www.bocsar.nsw.gov.au](http://www.bocsar.nsw.gov.au)  
ISSN: 1035-9044

This report is available in pdf format on our website and may be provided in alternative formats. Please contact the Bureau on 8346 1100 or email us at [bcsr@justice.nsw.gov.au](mailto:bcsr@justice.nsw.gov.au).

## INTRODUCTION

This report presents data on crime reported to, or detected by, the NSW Police Force from January 1995 to June 2018, with a focus on the statistical trends for the 24 months ending June 2018. The data were extracted from the Computerised Operational Policing System (COPS) of the NSW Police Force in August 2018.

The report includes an overview of trends in the most recent two-year period for major offence categories, firstly for NSW and then across NSW regions broken down to the Local Government Area (LGA) level. At the State level, for the 24-month period to the end of June 2018 one major offence category has been trending upwards: indecent assault, act of indecency and other sexual offences (up 7.3%). Three of the 17 major offence categories were trending downwards: break and enter dwelling (down 6.5%), break and enter non-dwelling (down 6.2%) and malicious damage to property (down 4.7%).

The NSW graphs for rates of violent and property offences are on page 7 of the report. For violent offences using the 12-month moving average (light grey line) we can see a downward path from 2004, which has stabilised over the last 5 years. However, the trend tests shown in Table 1.1 indicate that several NSW Statistical Areas are still experiencing significant downward trends in violent crime. The property offences graph using the 6-month moving average (light grey line) indicates a strong downward path from 2000 to 2010, after which there are further declines but at a slower rate. Table 1.1 showing trend tests on the levels of property offences indicates a significant decrease over the last five years.

Dr Don Weatherburn

September 2018

---

© State of New South Wales through the Department of Justice NSW 2017. You may copy, distribute, display, download and otherwise freely deal with this work for any purpose, provided that you attribute the Department of Justice NSW as the owner. However, you must obtain permission if you wish to (a) charge others for access to the work (other than at cost), (b) include the work in advertising or a product for sale, or (c) modify the work.

## CONTENTS

<b>SECTION 1: OVERVIEW OF TRENDS IN VIOLENT AND PROPERTY CRIME</b>	<b>. . . 5</b>
Figure 1.1 NSW long-term trend in violent crime	. . . 7
Figure 1.2 NSW long-term trend in property crime	. . . 7
Table 1.1 Trends in violent and property offences, over the 60 months to June 2018, NSW Statistical Areas (SAs) and NSW	. . . 8
Table 1.2 Trends in violent and property offences, over the 60 months to June 2018, NSW Statistical Areas (SAs) and NSW	. . . 9
Table 1.3 Trends in violent and property offences, over the 60 months to June 2018, NSW Local Government Areas (LGAs)	. . . 10
<b>SECTION 2: OVERVIEW OF TRENDS IN RECORDED CRIME, BY OFFENCE TYPE</b>	<b>. . . 13</b>
Table 2.1 Trends in recorded criminal incidents for major offences, over the 60 months to June 2018, NSW	. . . 14
Table 2.2 Periodic trends in recorded criminal incidents for major offences over the 60 months to June 2018, NSW	. . . 15
Table 2.3 Number and trends in recorded criminal incidents for 62 offences, over the 24 months to June 2018, NSW	. . . 16
Table 2.4 Number and outcome of 24-month trend for major offences, NSW Local Government Areas (LGAs), all reports 2009 to June 2018	17
Figure 2.1A Number of NSW LGAs with significant upward trends for major offences in the 24-month periods to June 2017 and June 2018	. . . 18
Figure 2.1B Number of NSW LGAs with significant downward trends for major offences in the 24-month periods to June 2017 and June 2018	. . . 18
<b>SECTION 3: TRENDS, RATE COMPARISONS AND RECORDED CRIMINAL INCIDENTS FOR MAJOR OFFENCES, NSW REGIONS AND LGAS</b>	<b>. . . 19</b>
Table 3.1A Trends in recorded criminal incidents for major offences, over the 24 months to June 2018, NSW SAs	. . . 20
Table 3.1B Ratio to NSW rate of recorded criminal incidents per 100,000 population for major offences, over the 12 months to June 2018, NSW SAs	. . . 20
Table 3.1C Number of recorded criminal incidents for major offences, over the 12 months to June 2018, NSW SAs	. . . 21
Table 3.1D Number of recorded criminal incidents for major offences, over the 12 months to June 2017, NSW SAs	. . . 21
Table 3.2A Trends in recorded criminal incidents for major offences, over the 24 months to June 2018, Greater Sydney SAs	. . . 22
Table 3.2B Ratio to NSW rate of recorded criminal incidents per 100,000 population for major offences, over the 12 months to June 2018, Greater Sydney SAs	. . . 22
Table 3.2C Number of recorded criminal incidents for major offences, over the 12 months to June 2018, Greater Sydney SAs	. . . 23
Table 3.2D Number of recorded criminal incidents for major offences, over the 12 months to June 2017, Greater Sydney SAs	. . . 23
Table 3.3A Trends in recorded criminal incidents for major offences, over the 24 months to June 2018, NSW LGAs	. . . 24
Table 3.3B Ratio to NSW rate of recorded criminal incidents per 100,000 population for major offences, over the 12 months to June 2018, NSW LGAs	. . . 26

Table 3.3C	Number of recorded criminal incidents for major offences, over the 12 months to June 2018, NSW LGAs	. . . 28
Table 3.3D	Number of recorded criminal incidents for major offences, over the 12 months to June 2017, NSW LGAs	. . . 30
<b>SECTION 4:</b>	<b>METHODS OF PROCEEDINGS AGAINST ALLEGED OFFENDERS</b>	<b>. . . 33</b>
Figure 4.1	Trends in referral methods for alleged offenders proceeded against to court over the 24 months to June 2018, NSW	34
Table 4.1	Number, percentage and trend in alleged offenders proceeded against by NSW Police by method of legal proceedings over the 24 months to June 2018, NSW	. . . 35
Table 4.2	Number, percentage and trend in alleged offenders proceeded against to court by NSW Police for major offences over the 24 months to June 2018, NSW	36
<b>SECTION 5:</b>	<b>CLEARED CRIMINAL INCIDENTS AND WHETHER LEGAL PROCEEDINGS COMMENCED FOR SELECTED OFFENCES</b>	<b>. . . 37</b>
Table 5.1	Number of recorded criminal incidents for selected offences by whether legal proceedings commenced in 30 days of reporting over the 24 months to May 2018, NSW	. . . 38
Table 5.2	Number of recorded criminal incidents for selected offences by whether legal proceedings commenced in 90 days of reporting over the 24 months to March 2018, NSW	39
Figure 5.1	Percentage of recorded criminal incidents for selected offences where legal proceedings commenced within 30 and 90 days, over the 12 months to March 2018, NSW	. . . 40
<b>APPENDICES</b>		<b>41</b>
	<b>APPENDIX 1: TRENDS IN RECORDED CRIMINAL INCIDENTS IN NSW</b>	<b>. . . 42</b>
	<b>APPENDIX 2: DEFINITIONS AND EXPLANATORY NOTES</b>	<b>. . . 43</b>
	<b>APPENDIX 3: BOCSAR OFFENCES MAPPED TO POLICE INCIDENT CATEGORY</b>	<b>. . . 46</b>
	<b>APPENDIX 4: NSW &amp; GREATER SYDNEY STATISTICAL AREA MAPS</b>	<b>. . . 53</b>
	<b>APPENDIX 5: LGAS IN GREATER SYDNEY STATISTICAL AREAS</b>	<b>. . . 55</b>
	<b>APPENDIX 5: LGAS IN NSW REGIONAL STATISTICAL AREAS</b>	<b>. . . 56</b>



---

**SECTION 1:**

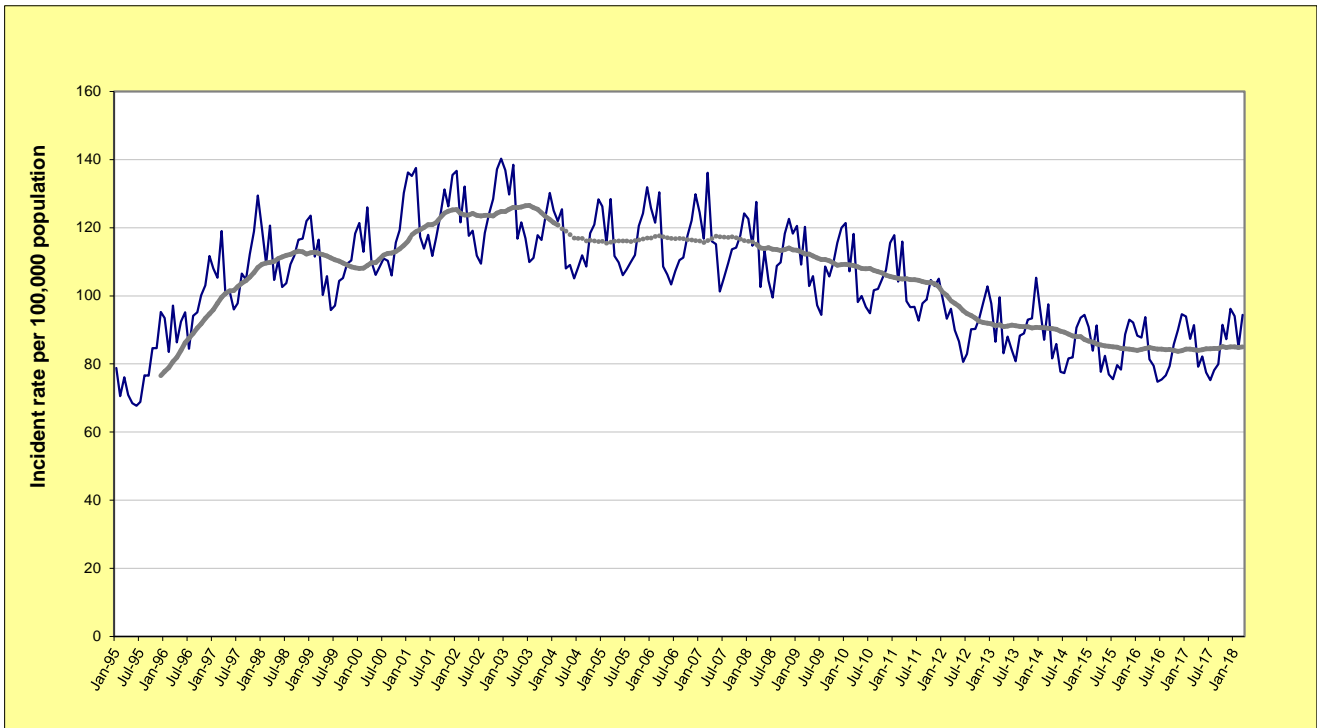
**OVERVIEW OF TRENDS  
IN VIOLENT AND PROPERTY CRIME**

---

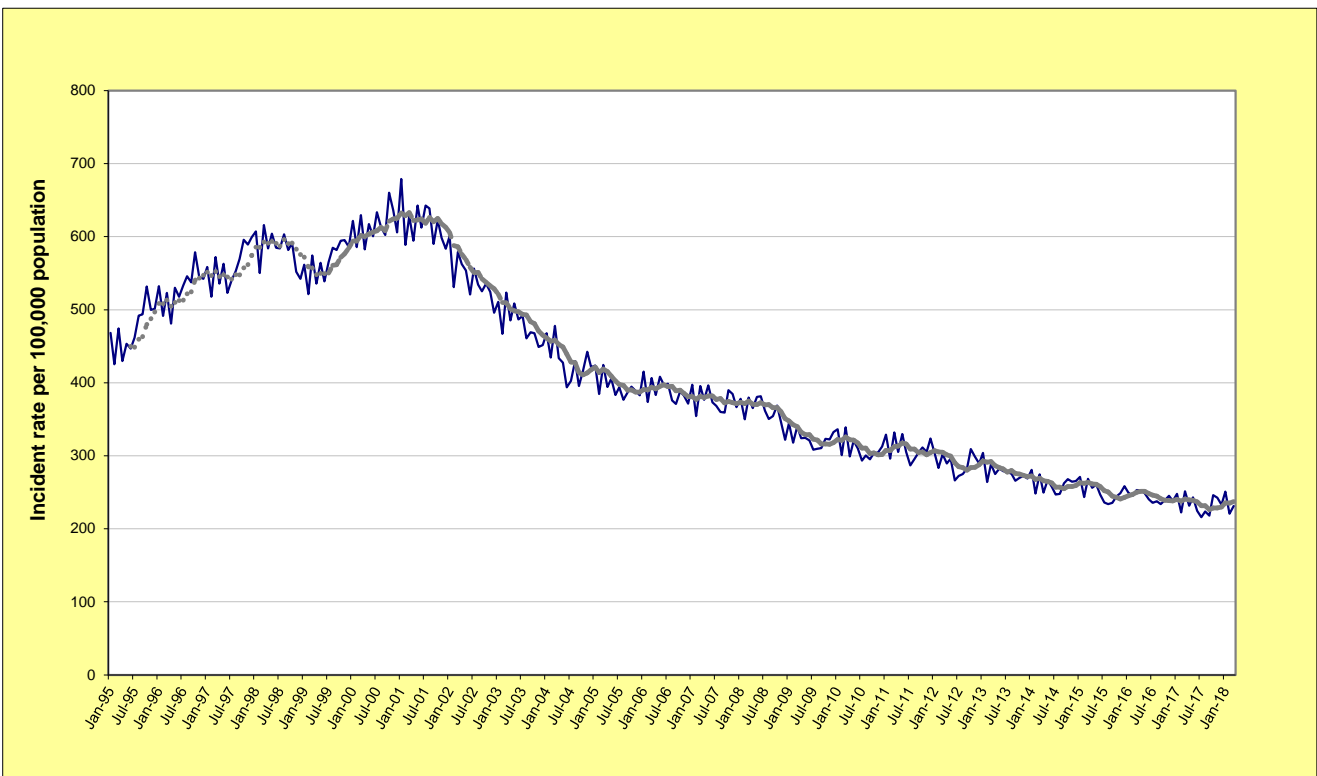




**FIGURE 1.1: NSW LONG-TERM TREND IN VIOLENT OFFENCES\***



**FIGURE 1.2: NSW LONG-TERM TREND IN PROPERTY OFFENCES\*\***



\* **Violent offences** include: murder, attempted murder, manslaughter, assault - domestic violence related, assault - non-domestic violence related, assault police, robbery without a weapon, robbery with a firearm, robbery with a weapon not a firearm, sexual assault and indecent assault / act of indecency / other sexual offences.

\*\* **Property offences** include: break and enter dwelling, break and enter non-dwelling, motor vehicle theft, steal from motor vehicle, steal from retail store, steal from dwelling, steal from person, stock theft, other theft and fraud.

For further explanation of **violent offences** and **property offences**, see page 42, Note [7].

**TABLE 1.1: TRENDS<sup>^</sup> IN RECORDED CRIMINAL INCIDENTS, VIOLENT AND PROPERTY OFFENCES  
OVER THE 60 MONTHS TO JUNE 2018, NSW STATISTICAL AREAS (SAs) AND NSW**

NSW Statistical Area	Violent Offences*			Property Offences**		
	Annual percentage change over the last 24 months	Average annual percentage change over the last 60 months	Ratio <sup>#</sup> to NSW rate	Annual percentage change over the last 24 months	Average annual percentage change over the last 60 months	Ratio <sup>#</sup> to NSW rate
Greater Sydney	Stable	Stable	0.9	Stable	-3.7%	0.9
Capital Region	Stable	Stable	0.9	Stable	Stable	0.8
Central West	Stable	Stable	1.3	-13.0%	-6.2%	1.0
Coffs Harbour - Grafton	Stable	Stable	1.5	Stable	Stable	1.2
Far West and Orana	Stable	-2.7%	2.4	-16.4%	Stable	1.8
Hunter Valley excluding Newcastle	Stable	2.7%	1.2	-6.9%	Stable	1.2
Illawarra	Stable	-3.3%	0.9	Stable	-3.1%	0.9
Mid North Coast	Stable	Stable	1.2	Stable	Stable	1.2
Murray	Stable	Stable	1.1	Stable	Stable	1.1
New England and North West	Stable	Stable	1.6	Stable	2.6%	1.5
Newcastle and Lake Macquarie	Stable	Stable	1.1	Stable	1.6%	1.4
Richmond - Tweed	Stable	-2.5%	1.1	Stable	-3.0%	1.0
Riverina	Stable	Stable	1.3	Stable	Stable	1.3
Southern Highlands and Shoalhaven	Stable	-3.1%	0.9	Stable	-6.6%	0.7
<b>NSW</b>	Stable	Stable	<b>1.0</b>	Stable	-2.7%	<b>1.0</b>

<sup>^</sup> For further explanation of trend results, see page 42, Notes [5] and [6].

\* **Violent offences** include: murder, assault - domestic violence related, assault - non-domestic violence related, assault police, robbery without a weapon, robbery with a firearm, robbery with a weapon not a firearm, sexual assault and indecent assault / act of indecency / other sexual offences.

\*\* **Property offences** include: break and enter dwelling, break and enter non-dwelling, motor vehicle theft, steal from motor vehicle, steal from retail store, steal from dwelling, steal from person, stock theft, other theft and fraud.

For further explanation of violent offences and property offences, see page 42, Note [7].

<sup>#</sup> For further explanation of rate calculation populations and the ratio to NSW rate, see page 42, Footnote 2 and Note [8].

**TABLE 1.2: TRENDS<sup>^</sup> IN RECORDED CRIMINAL INCIDENTS, VIOLENT AND PROPERTY OFFENCES  
OVER THE 60 MONTHS TO JUNE 2018, GREATER SYDNEY STATISTICAL AREAS (SAs)**

Greater Sydney Statistical Area	Violent Offences*			Property Offences**		
	Annual percentage change over the last 24 months	Average annual percentage change over the last 60 months	Ratio <sup>#</sup> to NSW rate	Annual percentage change over the last 24 months	Average annual percentage change over the last 60 months	Ratio <sup>#</sup> to NSW rate
Baulkham Hills and Hawkesbury	Stable	Stable	0.4	Stable	-2.2%	0.5
Blacktown	Stable	Stable	1.3	8.4%	2.9%	1.4
Central Coast	Stable	4.3%	1.2	-10.3%	Stable	0.9
City and Inner South	Stable	Stable	1.9	Stable	-6.8%	2.1
Eastern Suburbs	Stable	2.2%	0.7	-10.8%	-5.9%	0.8
Inner South West	Stable	Stable	0.7	Stable	-8.2%	0.7
Inner West	Stable	Stable	0.6	-11.1%	-5.4%	0.8
North Sydney and Hornsby	Stable	Stable	0.4	Stable	Stable	0.6
Northern Beaches	Stable	Stable	0.5	Stable	-1.7%	0.6
Outer South West	Stable	Stable	1.0	-9.7%	-3.9%	0.8
Outer West and Blue Mountains	Stable	Stable	1.2	Stable	Stable	1.1
Parramatta	Stable	Stable	0.9	Stable	-3.3%	1.1
Ryde	Stable	Stable	0.4	Stable	-2.4%	0.7
South West	Stable	Stable	0.9	-9.4%	-4.5%	0.9
Sutherland	Stable	2.2%	0.6	Stable	-4.4%	0.6

<sup>^</sup> For further explanation of trend results, see page 42, Notes [5] and [6].

\* **Violent offences** include: murder, assault - domestic violence related, assault - non-domestic violence related, assault police, robbery without a weapon, robbery with a firearm, robbery with a weapon not a firearm, sexual assault and indecent assault / act of indecency / other sexual offences.

\*\* **Property offences** include: break and enter dwelling, break and enter non-dwelling, motor vehicle theft, steal from motor vehicle, steal from retail store, steal from dwelling, steal from person, stock theft, other theft and fraud.

For further explanation of violent offences and property offences, see page 42, Note [7].

<sup>#</sup> For further explanation of rate calculation populations and the ratio to NSW rate, see page 42, Footnote 2 and Note [8].

TABLE 1.3: TRENDS<sup>a</sup> IN RECORDED CRIMINAL INCIDENTS, VIOLENT AND PROPERTY OFFENCES, OVER THE 60 MONTHS TO JUNE 2018, NSW LOCAL GOVERNMENT AREAS (LGAs)

NSW LGAs	Violent Offences*			Property Offences*		
	Annual percentage change over the last 24 months	Average annual percentage change over the last 60 months	Ratio <sup>#</sup> to NSW rate	Annual percentage change over the last 24 months	Average annual percentage change over the last 60 months	Ratio <sup>#</sup> to NSW rate
Albury	ns	ns	1.5	ns	2.0	1.5
Armidale Regional	ns	-4.5	1.5	ns	4.5	1.8
Ballina	ns	ns	0.8	ns	3.0	1.0
Balranald	.	.	.	ns	ns	.
Bathurst Regional	ns	ns	1.4	ns	ns	1.2
Bayside	ns	5.3	0.8	ns	-7.8	0.8
Bega Valley	ns	ns	0.8	-14.8	ns	0.6
Bellingen	ns	ns	0.8	ns	-5.5	0.7
Berrigan	ns	ns	0.5	ns	ns	0.6
Blacktown	ns	ns	1.3	7.9	2.8	1.3
Bland	ns	ns	0.6	ns	ns	0.7
Blayney	ns	ns	1.1	ns	ns	0.6
Blue Mountains	ns	ns	0.8	ns	-4.7	0.5
Bogan	ns	ns	.	ns	ns	.
Bourke	ns	-6.2	.	-36.6	ns	.
Brewarrina	ns	-15.8	.	ns	ns	.
Broken Hill	ns	ns	2.3	-25.4	ns	1.4
Burwood	ns	ns	0.7	-7.1	-9.1	1.2
Byron	ns	ns	1.5	ns	ns	1.3
Cabonne	ns	-9.5	0.5	ns	ns	0.5
Camden	ns	11.0	0.8	ns	ns	0.6
Campbelltown	ns	-4.1	1.2	-7.8	-4.4	1.0
Canada Bay	ns	ns	0.3	ns	-3.4	0.7
Canterbury-Bankstown	ns	-3.0	0.7	-8.8	-7.9	0.7
Carrathool	ns	ns	.	ns	10.1	.
Central Coast	ns	4.3	1.2	-10.3	ns	0.9
Central Darling	ns	-9.6	.	ns	ns	.
Cessnock	ns	ns	1.3	-14.3	ns	1.4
Clarence Valley	ns	ns	1.2	ns	-2.8	1.2
Cobar	ns	ns	2.1	-25.4	-11.4	1.1
Coffs Harbour	ns	ns	1.8	31.0	ns	1.3
Coolamon	ns	ns	0.6	ns	ns	0.5
Coonamble	18.8	ns	2.9	ns	-5.0	2.7
Cootamundra-Gundagai	ns	ns	1.0	ns	4.0	1.0
Cowra	ns	-7.4	1.3	-14.9	ns	1.2
Cumberland	ns	-2.0	0.9	ns	-3.4	1.0
Dubbo Regional	ns	ns	2.1	-14.8	ns	2.1
Dungog	ns	ns	0.7	ns	ns	0.5
Edward River	ns	ns	1.2	-23.0	ns	0.8
Eurobodalla	ns	ns	1.2	ns	ns	1.0
Fairfield	ns	ns	0.8	ns	-7.0	0.7
Federation	ns	ns	0.7	ns	-7.9	0.8
Forbes	-6.9	ns	1.5	ns	ns	1.4
Georges River	ns	ns	0.6	ns	-7.0	0.6
Gilgandra	ns	ns	1.6	ns	-8.4	1.6
Glen Innes Severn	ns	ns	1.9	-45.5	ns	0.9
Goulburn Mulwaree	ns	ns	1.2	ns	9.2	1.0
Greater Hume Shire	ns	ns	0.5	ns	ns	0.6
Griffith	ns	ns	1.5	ns	-3.8	1.3
Gunnedah	ns	ns	1.4	29.8	-7.1	1.2
Gwydir	28.6	ns	0.8	ns	ns	0.6
Hawkesbury	11.0	-4.4	1.0	-16.8	-8.8	0.7
Hay	ns	ns	.	ns	ns	.
Hilltops	ns	ns	1.4	ns	ns	0.8
Hornsby	ns	ns	0.3	ns	-2.2	0.5
Hunters Hill	ns	ns	0.5	ns	ns	0.6
Inner West	ns	-2.3	0.7	-9.6	-6.3	0.9
Inverell	ns	ns	1.6	24.3	11.3	1.5
Junee	-31.7	-16.4	0.6	ns	ns	0.7
Kempsey	ns	ns	1.7	ns	ns	1.6
Kiama	ns	-9.2	0.4	ns	ns	0.6
Ku-ring-gai	ns	ns	0.2	ns	ns	0.4
Kyogle	ns	ns	1.3	-24.7	ns	0.5
Lachlan	ns	ns	1.8	ns	-17.4	1.0
Lake Macquarie	ns	ns	1.0	ns	ns	1.0

TABLE 1.3: TRENDS<sup>^</sup> IN RECORDED CRIMINAL INCIDENTS, VIOLENT AND PROPERTY OFFENCES, OVER THE 60 MONTHS TO JUNE 2018, NSW LOCAL GOVERNMENT AREAS (LGAs)

NSW LGAs	Violent Offences*			Property Offences*		
	Annual percentage change over the last 24 months	Average annual percentage change over the last 60 months	Ratio <sup>#</sup> to NSW rate	Annual percentage change over the last 24 months	Average annual percentage change over the last 60 months	Ratio <sup>#</sup> to NSW rate
Lane Cove	ns	ns	0.3	ns	ns	0.6
Leeton	ns	ns	1.6	24.6	9.1	1.3
Lismore	ns	ns	1.4	ns	ns	1.0
Lithgow	ns	ns	1.2	-22.6	-13.1	0.9
Liverpool	ns	ns	1.0	-10.6	-3.7	1.0
Liverpool Plains	ns	ns	1.2	ns	ns	0.7
Lockhart	ns	.	0.8	ns	ns	0.4
Lord Howe Island	.	.	.	.	.	.
Maitland	15.9	7.0	1.3	ns	5.0	1.3
Mid-Coast	ns	ns	1.2	ns	ns	1.2
Mid-Western Regional	ns	ns	1.2	ns	-6.7	0.7
Moree Plains	ns	-3.5	3.6	ns	ns	3.9
Mosman	ns	ns	0.4	ns	ns	0.5
Murray River	ns	ns	0.4	ns	ns	0.8
Murrumbidgee	ns	ns	1.3	ns	ns	0.6
Muswellbrook	ns	ns	1.5	ns	-5.6	1.3
Nambucca	ns	ns	1.4	27.5	6.0	1.5
Narrabri	ns	ns	1.5	ns	-8.4	1.0
Narrandera	ns	ns	1.3	ns	ns	1.2
Narramine	ns	ns	2.2	ns	ns	1.9
Newcastle	ns	ns	1.4	ns	4.1	1.9
North Sydney	ns	ns	0.6	ns	-4.7	0.8
Northern Beaches	ns	ns	0.5	ns	-1.7	0.6
Oberon	ns	ns	1.0	ns	ns	0.6
Orange	ns	-5.1	1.6	ns	-7.5	1.4
Parkes	ns	ns	1.8	ns	ns	1.1
Parramatta	ns	ns	0.8	ns	-2.1	1.1
Penrith	ns	2.2	1.3	5.9	ns	1.3
Port Macquarie-Hastings	ns	-4.6	0.9	ns	ns	0.8
Port Stephens	ns	ns	1.1	ns	-5.9	0.9
Queanbeyan-Palerang Regional	ns	ns	0.6	14.2	ns	0.9
Randwick	ns	ns	0.8	-6.1	-3.9	0.8
Richmond Valley	ns	ns	1.5	ns	-6.0	0.9
Ryde	ns	3.9	0.5	ns	ns	0.8
Shellharbour	-11.9	-3.6	0.8	ns	-5.0	0.8
Shoalhaven	ns	ns	1.0	ns	-6.3	0.9
Singleton	ns	ns	1.1	ns	-5.8	1.0
Snowy Monaro Regional	ns	ns	0.8	ns	ns	0.6
Snowy Valleys	ns	ns	1.2	ns	15.1	1.3
Strathfield	ns	ns	0.9	-21.4	-6.9	1.0
Sutherland Shire	ns	2.1	0.6	ns	-4.4	0.6
Sydney	ns	ns	2.4	ns	-6.9	2.6
Tamworth Regional	ns	ns	1.5	ns	5.3	1.5
Temora	ns	ns	0.8	-39.2	ns	0.5
Tenterfield	ns	ns	1.1	-41.0	ns	0.8
The Hills Shire	ns	ns	0.4	ns	ns	0.6
Tweed	ns	-6.2	0.8	ns	-4.2	0.8
Unincorporated Far West	.	.	.	.	.	.
Upper Hunter Shire	ns	ns	0.7	ns	ns	0.8
Upper Lachlan Shire	ns	ns	0.4	ns	ns	0.5
Uralla	ns	ns	0.9	ns	ns	0.5
Wagga Wagga	ns	ns	1.5	ns	ns	1.6
Walcha	ns	ns	1.4	ns	ns	0.5
Walgett	20.4	-3.6	4.5	ns	ns	2.0
Warren	ns	ns	.	-26.6	ns	.
Warrumbungle Shire	ns	ns	1.3	ns	-5.4	0.8
Waverley	ns	ns	0.8	ns	-6.0	1.1
Weddin	.	.	0.5	ns	ns	0.5
Wentworth	ns	ns	2.3	ns	ns	1.2
Willoughby	ns	5.8	0.5	ns	ns	1.0
Wingecarribee	ns	ns	0.5	-28.5	-8.0	0.5
Wollondilly	ns	ns	0.7	-22.0	ns	0.4
Wollongong	ns	-2.9	0.9	ns	-2.8	1.0
Woollahra	ns	ns	0.5	ns	-9.4	0.7
Yass Valley	ns	ns	0.5	ns	ns	0.5
NSW	ns	ns	1.0	ns	-2.7	1.0

<sup>^</sup> For further explanation of trend results, see page 42, Notes [5] and [6].

\* For further explanation of violent offences and property offences, see page 42, Note [7].

# For further explanation of rate calculation populations and the ratio to NSW rate, see page 42, Footnote 2 and Note [8].

Sydney LGA can be considered a special case since the population used to calculate the rate is much lower than the population using the area for work and entertainment. This will be reflected in higher incident rates.



---

**SECTION 2:**  
**OVERVIEW OF TRENDS**  
**IN RECORDED CRIME**  
**BY OFFENCE TYPE**  
**NSW**

---

**TABLE 2.1: TRENDS<sup>^</sup> IN RECORDED CRIMINAL INCIDENTS FOR MAJOR OFFENCES  
OVER THE 60 MONTHS TO JUNE 2018, NSW**

<i>Offence category</i>	<i>Trend result and annual percentage change over the last 24 months</i>	<i>Trend result and average annual percentage change over the last 60 months</i>
Murder *	Stable	Down by 11.5%
Domestic violence related assault	Stable	Stable
Non-domestic violence related assault	Stable	Stable
Sexual assault	Stable	Up by 3.9%
Indecent assault, act of indecency and other sexual offences	Up by 7.3%	Up by 3.3%
Robbery without a weapon	Stable	Down by 9.2%
Robbery with a firearm	Stable	Down by 16.3%
Robbery with a weapon not a firearm	Stable	Down by 10.0%
Break and enter dwelling	Down by 6.5%	Down by 6.0%
Break and enter non-dwelling	Down by 6.2%	Down by 6.1%
Motor vehicle theft	Stable	Down by 3.8%
Steal from motor vehicle	Stable	Down by 3.0%
Steal from retail store	Stable	Up by 4.1%
Steal from dwelling	Stable	Down by 3.1%
Steal from person	Stable	Down by 9.4%
Fraud	Stable	Stable
Malicious damage to property	Down by 4.7%	Down by 4.5%

<sup>^</sup> For further explanation of trend results, see page 42, Notes [5] and [6].

\* For murder, the trend test is applied to the monthly number of recorded victims rather than criminal incidents.



**TABLE 2.2: PERIODIC TRENDS<sup>^</sup> IN RECORDED CRIMINAL INCIDENTS FOR MAJOR OFFENCES, OVER THE 60 MONTHS TO JUNE 2018, NSW**

<b>Offence category</b>	<b>Trend result and annual percentage change</b>				
	<b>Jul 2012 - Jun 2014</b>	<b>Jul 2013 - Jun 2015</b>	<b>Jul 2014 - Jun 2016</b>	<b>Jul 2015 - Jun 2017</b>	<b>Jul 2017 - Jun 2018</b>
Murder *	Stable	Stable	-35.1%	Stable	Stable
Domestic violence related assault	Stable	Stable	Stable	Stable	Stable
Non-domestic violence related assault	Stable	Stable	Stable	Stable	Stable
Sexual assault	Stable	Stable	Stable	8.1%	Stable
Indecent assault, act of indecency and other sexual offences	Stable	Stable	7.6%	Stable	7.3%
Robbery without a weapon	-18.7%	-13.6%	-25.4%	Stable	Stable
Robbery with a firearm	Stable	-13.1%	-40.2%	Stable	Stable
Robbery with a weapon not a firearm	Stable	-19.0%	-22.1%	Stable	Stable
Break and enter dwelling	-10.3%	-5.6%	-7.1%	-4.8%	-6.5%
Break and enter non-dwelling	-14.2%	Stable	Stable	Stable	-6.2%
Motor vehicle theft	-11.3%	Stable	-12.4%	Stable	Stable
Steal from motor vehicle	-5.2%	Stable	Stable	Stable	Stable
Steal from retail store	Stable	Stable	6.7%	5.7%	Stable
Steal from dwelling	Stable	Stable	-6.4%	Stable	Stable
Steal from person	-14.4%	-9.6%	-9.9%	-12.1%	Stable
Fraud	Stable	Stable	3.0%	Stable	Stable
Malicious damage to property	-11.4%	-8.5%	-3.0%	Stable	-4.7%

<sup>^</sup> For further explanation of trend results, see page 42, Notes [5] and [6].

\* For murder, the trend test is applied to the monthly number of recorded victims rather than criminal incidents.

**TABLE 2.3: NUMBER AND TRENDS<sup>^</sup> IN RECORDED CRIMINAL INCIDENTS FOR 62 OFFENCES OVER THE 24 MONTHS TO JUNE 2018, NSW**

Offence Category		Number of recorded criminal incidents		Trend <sup>^</sup> over the last 24 months	
		over the 12 months to June 2017	over the 12 months to June 2018	Trend test result	Percentage change
Homicide	Murder*	74	54	Stable	
	Attempted murder	21	16	.	
	Murder accessory, conspiracy	3	2	.	
	Manslaughter*	4	10	.	
Assault	Domestic violence related assault	28,741	28,637	Stable	
	Non-domestic violence related assault	32,089	31,977	Stable	
	Assault Police	2,333	2,337	Stable	
Sexual offences	Sexual assault	5,615	5,863	Stable	
	Indecent assault, act of indecency and other sexual offences	7,188	7,715	Up	7.3%
Abduction and kidnapping		224	195	Stable	
Robbery	Robbery without a weapon	1,417	1,447	Stable	
	Robbery with a firearm	152	150	Stable	
	Robbery with a weapon not a firearm	800	876	Stable	
Blackmail and extortion		102	106	Stable	
Intimidation, stalking and harassment		30,477	31,136	Stable	
Other offences against the person		1,384	1,076	Stable	
Theft	Break and enter dwelling	29,014	27,130	Down	-6.5%
	Break and enter non-dwelling	11,063	10,377	Down	-6.2%
	Receiving or handling stolen goods	7,754	7,675	Stable	
	Motor vehicle theft	13,423	12,913	Stable	
	Steal from motor vehicle	40,080	38,309	Stable	
	Steal from retail store	24,136	24,341	Stable	
	Steal from dwelling	20,816	19,355	Stable	
	Steal from person	4,705	4,418	Stable	
	Stock theft	491	426	Stable	
	Fraud	48,803	49,851	Stable	
	Other theft	28,084	27,129	Stable	
Arson		5,634	5,803	Stable	
Malicious damage to property		62,382	59,472	Down	-4.7%
Drug offences	Possession and/or use of cocaine	1,601	2,209	Up	38.0%
	Possession and/or use of narcotics	950	1,001	Stable	
	Possession and/or use of cannabis	18,387	17,695	Stable	
	Possession and/or use of amphetamines	6,932	6,838	Stable	
	Possession and/or use of ecstasy	2,733	2,853	Stable	
	Possession and/or use of other drugs	4,239	4,531	Stable	
	Dealing, trafficking in cocaine	536	794	Stable	
	Dealing, trafficking in narcotics	433	177	Down	-59.1%
	Dealing, trafficking in cannabis	919	774	Stable	
	Dealing, trafficking in amphetamines	2,049	1,932	Stable	
	Dealing, trafficking in ecstasy	707	710	Stable	
	Dealing, trafficking in other drugs	304	387	Stable	
	Cultivating cannabis	1,100	1,156	Stable	
	Manufacture drug	52	74	Stable	
Importing drugs	61	76	Stable		
Other drug offences	5,166	5,373	Stable		
Prohibited and regulated weapons offences		12,289	13,305	Up	8.3%
Disorderly conduct	Trespass	10,046	9,815	Stable	
	Offensive conduct	5,255	4,972	Stable	
	Offensive language	3,414	3,037	Down	-11.0%
	Criminal intent	2,255	2,236	Stable	
Betting and gaming offences		99	84	Stable	
Liquor offences		11,040	11,211	Stable	
Pornography offences		589	623	Stable	
Prostitution offences		88	41	Stable	
Against justice procedures	Escape custody	173	167	Stable	
	Breach Apprehended Violence Order	15,155	15,208	Stable	
	Breach bail conditions	42,617	42,127	Stable	
	Fail to appear	700	531	Down	-24.1%
	Resist or hinder officer	6,190	6,248	Stable	
	Other offences against justice procedures	618	537	Stable	
Transport regulatory offences		130,283	123,957	Stable	
Other offences		14,700	14,605	Stable	

<sup>^</sup> For further explanation of trend results, see page 42, Notes [5] and [6].

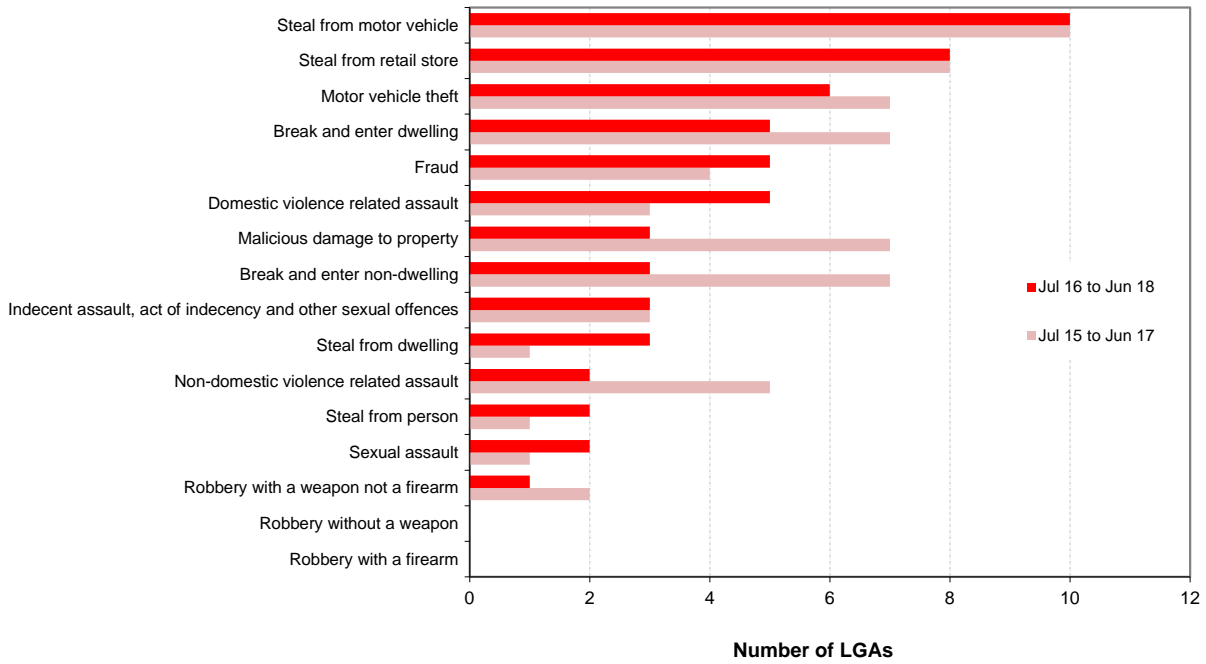
\* For murder and manslaughter incidents, the trend test is applied to the monthly number of recorded victims rather than criminal incidents.

**TABLE 2.4: NUMBER AND OUTCOME<sup>^</sup> OF 24-MONTH TREND TESTS FOR MAJOR OFFENCES, NSW LOCAL GOVERNMENT AREAS (LGAs), ALL REPORTS 2010 TO JUNE 2018**

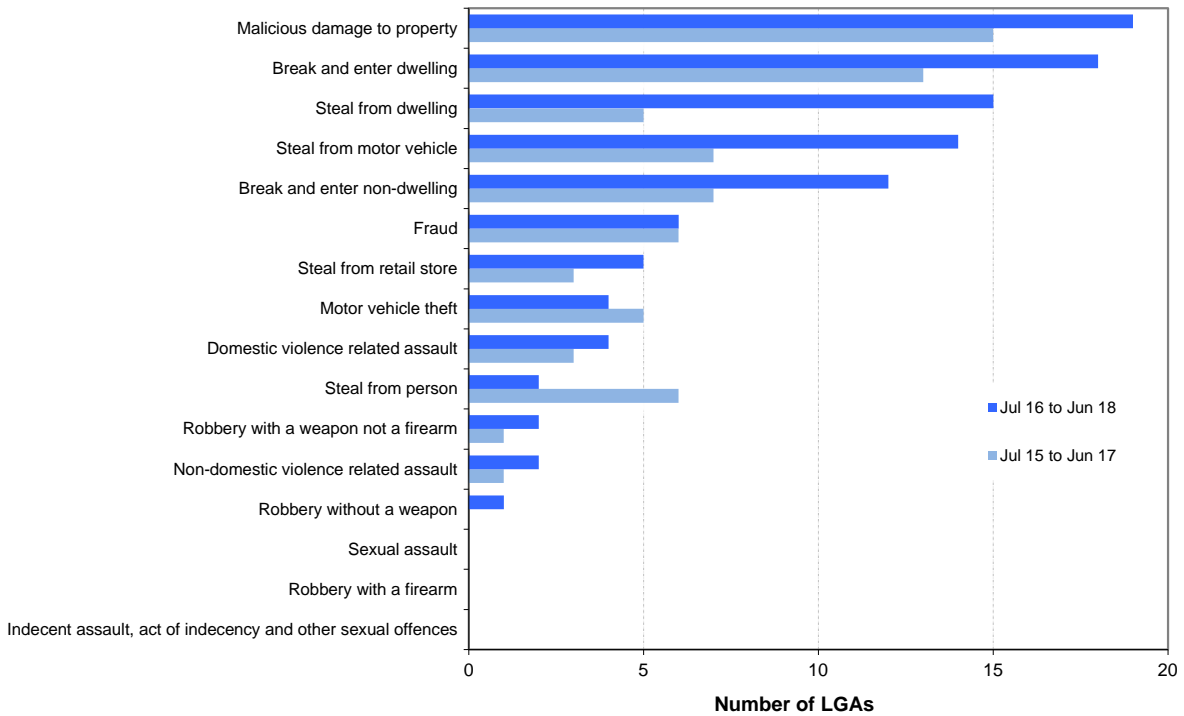
<b>Year</b>	<b>Final month for 24-month trend test</b>	<b>Number of LGAs</b>	<b>Number of trend tests</b>	<b>Stable trends (%)</b>	<b>Downward trends (%)</b>	<b>Upward trends (%)</b>
<b>2010</b>	March	130	1,255	82.1	11.8	6.1
	June	130	1,254	83.0	12.4	4.6
	September	130	1,264	81.4	14.0	4.6
	<b>December</b>	<b>130</b>	<b>1,260</b>	<b>86.4</b>	<b>9.0</b>	<b>4.5</b>
<b>2011</b>	March	130	1,250	86.0	8.2	5.8
	June	130	1,244	86.4	8.8	4.7
	September	130	1,251	84.9	11.5	3.6
	<b>December</b>	<b>130</b>	<b>1,241</b>	<b>85.9</b>	<b>9.1</b>	<b>5.0</b>
<b>2012</b>	March	130	1,250	86.2	5.7	8.2
	June	130	1,236	86.7	7.3	6.0
	September	130	1,240	85.9	9.5	4.6
	<b>December</b>	<b>130</b>	<b>1,246</b>	<b>85.6</b>	<b>7.9</b>	<b>6.6</b>
<b>2013</b>	March	130	1,238	85.3	6.9	7.8
	June	130	1,232	84.9	8.6	6.5
	September	130	1,240	83.6	10.9	5.5
	<b>December</b>	<b>130</b>	<b>1,236</b>	<b>84.4</b>	<b>11.1</b>	<b>4.5</b>
<b>2014</b>	March	130	1,228	84.0	9.9	6.1
	June	130	1,228	82.6	13.7	3.7
	September	130	1,227	80.0	17.2	2.9
	<b>December</b>	<b>130</b>	<b>1,227</b>	<b>85.7</b>	<b>10.0</b>	<b>4.2</b>
<b>2015</b>	March	130	1,224	86.2	9.0	4.8
	June	130	1,229	86.7	9.6	3.7
	September	130	1,220	86.1	10.9	3.0
	<b>December</b>	<b>130</b>	<b>1,223</b>	<b>87.7</b>	<b>8.1</b>	<b>4.3</b>
<b>2016</b>	March	130	1,225	85.8	6.2	8.0
	June	130	1,220	83.8	9.3	6.9
	September	130	1,220	83.4	11.5	5.1
	<b>December</b>	<b>130</b>	<b>1,218</b>	<b>87.2</b>	<b>7.2</b>	<b>5.6</b>
<b>2017</b>	March	130	1,225	88.0	5.6	6.4
	June	130	1,216	88.7	5.9	5.4
	September	130	1,223	84.9	11.1	4.0
	<b>December</b>	<b>130</b>	<b>1,223</b>	<b>86.9</b>	<b>9.2</b>	<b>3.9</b>
<b>2018</b>	March	130	1,223	87.2	7.4	5.5
	June	130	1,217	86.7	8.5	4.8

<sup>^</sup> This table summarises the aggregate outcomes of statistical tests for significant upward or downward trends in the number of recorded criminal incidents in major offence categories over a 24-month period across all NSW LGAs with a population of 3,000 or more. The trend test used is Kendall's rank-order correlation test. A trend test was not performed if there were fewer than 20 incidents in either of the two years for the period in question, hence no trend tests for **murder** were calculated for this table. These tests were carried out on 17 major offence categories.

**FIGURE 2.1A: NUMBER OF NSW LGAs WITH SIGNIFICANT UPWARD TRENDS<sup>^</sup>, MAJOR OFFENCES, JUL 15 TO JUN 17 and JUL 16 TO JUN 18**



**FIGURE 2.1B: NUMBER OF NSW LGAs WITH SIGNIFICANT DOWNWARD TRENDS<sup>^</sup>, MAJOR OFFENCES, JUL 15 TO JUN 17 and JUL 16 TO JUN 18**



<sup>^</sup> For further explanation of trend results, see page 42, Notes [5] and 6.

---

**SECTION 3:**

**TRENDS, RATE COMPARISONS AND  
RECORDED CRIMINAL INCIDENTS  
FOR MAJOR OFFENCES  
NSW REGIONS AND LGAS**

---

**TABLE 3.1A: TRENDS<sup>^</sup> IN RECORDED CRIMINAL INCIDENTS FOR MAJOR OFFENCES OVER THE 24 MONTHS TO JUNE 2018, NSW SAs**

<b>NSW Statistical Area</b>	<b>Murder *</b>	<b>Domestic violence related assault</b>	<b>Non-domestic violence related assault</b>	<b>Sexual assault</b>	<b>Indecent assault, act of indecency and other sexual offences</b>	<b>Robbery without a weapon</b>	<b>Robbery with a firearm</b>	<b>Robbery with a weapon not a firearm</b>	<b>Break and enter dwelling</b>	<b>Break and enter non-dwelling</b>	<b>Motor vehicle theft</b>	<b>Steal from motor vehicle</b>	<b>Steal from retail store</b>	<b>Steal from dwelling</b>	<b>Steal from person</b>	<b>Fraud</b>	<b>Malicious damage to property</b>
Greater Sydney	###	ns	ns	ns	ns	ns	ns	ns	ns	-7.4	ns	ns	ns	-7.3	ns	ns	-5.4
Capital Region	.	ns	ns	ns	ns	.	.	.	ns	ns	ns	ns	ns	ns	ns	ns	ns
Central West	.	ns	ns	ns	ns	.	.	.	-21.9	ns	ns	ns	-25.4	ns	ns	ns	-12.8
Coffs Harbour - Grafton	.	ns	ns	ns	ns	.	.	.	ns	ns	24.7	21.1	ns	ns	ns	51.9	ns
Far West and Orana	.	9.9	ns	ns	ns	.	.	.	-20.6	ns	-22.6	-14.1	-25.1	ns	-26.6	ns	ns
Hunter Valley excluding Newcastle	.	ns	ns	ns	ns	ns	.	ns	ns	ns	-20.2	-30.5	ns	ns	ns	16.0	ns
Illawarra	.	ns	ns	ns	ns	ns	.	62.1	ns	ns	ns	ns	ns	ns	ns	ns	ns
Mid North Coast	.	ns	ns	ns	ns	140.0	.	ns	ns	ns	ns	16.8	ns	ns	ns	ns	ns
Murray	.	ns	ns	ns	ns	.	.	.	ns	ns	ns	ns	ns	ns	ns	ns	ns
New England and North West	.	ns	ns	ns	ns	ns	.	ns	ns	ns	ns	ns	ns	-14.0	ns	ns	ns
Newcastle and Lake Macquarie	.	ns	ns	ns	ns	ns	.	ns	ns	ns	ns	ns	ns	-9.9	ns	11.4	ns
Richmond - Tweed	.	ns	ns	ns	ns	ns	.	.	ns	ns	ns	ns	ns	ns	ns	ns	ns
Riverina	.	ns	ns	ns	29.0	.	.	.	ns	ns	ns	ns	ns	-17.5	ns	ns	ns
Southern Highlands and Shoalhaven	.	ns	ns	ns	ns	.	.	.	-14.5	ns	ns	ns	64.7	ns	.	ns	ns
<b>NSW</b>	ns	ns	ns	ns	7.3	ns	ns	ns	-6.5	-6.2	ns	ns	ns	ns	ns	ns	-4.7

<sup>^</sup> For further explanation of **trend results**, see page 42, Notes [5] and [6].

\* The trend test for Greater Sydney and NSW on the offence of murder is for the number of victims, not incidents.

**TABLE 3.1B: RATIO TO NSW RATE<sup>^</sup> OF RECORDED CRIMINAL INCIDENTS PER 100,000 POPULATION FOR MAJOR OFFENCES OVER THE 12 MONTHS TO JUNE 2018, NSW SAs**

<b>NSW Statistical Area</b>	<b>Murder *</b>	<b>Domestic violence related assault</b>	<b>Non-domestic violence related assault</b>	<b>Sexual assault</b>	<b>Indecent assault, act of indecency and other sexual offences</b>	<b>Robbery without a weapon</b>	<b>Robbery with a firearm</b>	<b>Robbery with a weapon not a firearm</b>	<b>Break and enter dwelling</b>	<b>Break and enter non-dwelling</b>	<b>Motor vehicle theft</b>	<b>Steal from motor vehicle</b>	<b>Steal from retail store</b>	<b>Steal from dwelling</b>	<b>Steal from person</b>	<b>Fraud</b>	<b>Malicious damage to property</b>
Greater Sydney	0.9	0.9	0.9	0.8	0.8	1.2	1.1	1.0	0.8	0.7	0.8	0.9	1.0	0.8	1.2	1.1	0.8
Capital Region	1.3	0.9	0.9	1.2	1.1	0.3	0.2	0.5	0.9	1.0	0.9	0.9	0.8	1.0	0.2	0.5	1.1
Central West	1.4	1.4	1.2	1.6	1.5	0.4	0.2	0.5	1.4	1.6	1.1	1.0	0.8	1.3	0.6	0.8	1.5
Coffs Harbour - Grafton	0.0	1.5	1.4	1.7	1.5	0.9	0.7	1.3	1.4	2.1	1.4	1.0	0.8	1.6	0.9	1.0	1.2
Far West and Orana	1.2	3.0	2.1	2.0	2.3	0.7	0.4	1.0	3.3	3.3	1.9	2.1	1.3	2.2	0.9	0.8	2.6
Hunter Valley excluding Newcastle	0.0	1.4	1.0	1.5	1.3	0.5	1.0	1.0	1.4	1.8	1.5	1.0	1.0	1.5	0.5	0.9	1.3
Illawarra	0.9	0.8	0.8	1.0	0.8	0.9	1.7	1.4	0.9	1.0	1.1	1.2	1.2	1.0	0.5	0.6	1.0
Mid North Coast	1.3	1.2	1.1	1.4	1.4	1.2	0.7	1.1	1.5	2.3	1.1	1.0	1.0	1.7	0.7	0.7	1.3
Murray	3.7	1.2	1.1	1.2	1.1	0.6	0.9	0.5	1.3	1.7	1.1	1.4	1.0	1.4	0.4	0.6	1.4
New England and North West	1.5	1.7	1.6	1.6	1.4	1.1	0.3	1.3	2.5	2.2	1.5	1.7	1.4	1.9	0.7	0.8	2.0
Newcastle and Lake Macquarie	0.8	1.1	1.2	1.4	1.3	0.8	1.1	1.6	1.2	1.5	1.7	1.7	1.4	1.3	1.1	1.3	1.4
Richmond - Tweed	1.2	1.0	1.1	1.3	1.2	0.5	0.8	0.7	0.9	1.3	1.2	1.0	0.7	1.1	0.9	0.7	1.1
Riverina	1.8	1.6	1.2	1.5	1.3	0.5	0.0	1.3	2.2	1.9	1.3	1.5	1.1	1.5	0.5	0.6	1.6
Southern Highlands and Shoalhaven	1.0	0.8	0.8	1.2	1.2	0.4	0.7	0.4	0.8	0.9	0.7	0.7	1.0	0.7	0.3	0.6	1.0
<b>NSW</b>	1.0	1.0	1.0	1.0	1.0	1.0	1.0	1.0	1.0	1.0	1.0	1.0	1.0	1.0	1.0	1.0	1.0

<sup>^</sup> For further explanation of **rate calculation populations** and the **ratio to NSW rate**, see page 42, Footnote 2 and Note [8].

\* The rate calculations on the offence of murder is for the number of victims, not incidents.

**TABLE 3.1C: NUMBER OF RECORDED CRIMINAL INCIDENTS FOR MAJOR OFFENCES, OVER THE 12 MONTHS TO JUNE 2018, NSW SAs**

<i>NSW Statistical Area</i>	Murder *	Domestic violence related assault	Non-domestic violence related assault	Sexual assault	Indecent assault, act of indecency and other sexual offences	Robbery without a weapon	Robbery with a firearm	Robbery with a weapon not a firearm	Break and enter dwelling	Break and enter non-dwelling	Motor vehicle theft	Steal from motor vehicle	Steal from retail store	Steal from dwelling	Steal from person	Fraud	Malicious damage to property
Greater Sydney	32	16,117	17,981	2,975	4,208	1,098	110	566	13,777	4,416	7,102	21,563	15,483	10,160	3,423	35,849	30,952
Capital Region	2	733	829	198	239	11	1	12	694	311	333	966	564	566	25	761	1,810
Central West	2	1,072	1,062	252	308	17	1	13	1,041	450	374	1,065	516	696	68	1,083	2,380
Coffs Harbour - Grafton	0	778	818	176	210	24	2	20	705	387	313	705	340	539	68	925	1,298
Far West and Orana	1	1,277	1,003	178	273	16	1	13	1,344	519	362	1,199	484	630	58	605	2,337
Hunter Valley excluding Newcastle	0	1,433	1,079	299	339	26	5	29	1,298	646	693	1,391	832	984	76	1,496	2,677
Illawarra	2	901	1,042	238	245	49	10	47	975	390	581	1,869	1,128	740	88	1,245	2,340
Mid North Coast	2	957	988	221	291	48	3	26	1,100	678	411	1,035	651	944	82	1,041	2,131
Murray	3	516	536	104	135	13	2	7	545	266	221	824	354	408	28	465	1,259
New England and North West	2	1,184	1,232	228	265	39	1	27	1,598	550	454	1,593	831	901	72	911	2,920
Newcastle and Lake Macquarie	2	1,451	1,768	382	490	53	8	66	1,584	725	1,056	3,204	1,591	1,232	233	3,128	4,016
Richmond - Tweed	2	865	1,145	233	298	23	4	20	802	443	484	1,235	544	684	125	1,102	2,067
Riverina	2	919	790	181	200	16	0	24	1,237	414	349	1,158	547	596	50	638	2,021
Southern Highlands and Shoalhaven	1	429	508	142	175	12	2	6	430	180	180	501	476	275	22	589	1,177
<b>NSW</b>	<b>54</b>	<b>28,637</b>	<b>31,977</b>	<b>5,863</b>	<b>7,715</b>	<b>1,447</b>	<b>150</b>	<b>876</b>	<b>27,130</b>	<b>10,377</b>	<b>12,913</b>	<b>38,309</b>	<b>24,341</b>	<b>19,355</b>	<b>4,418</b>	<b>49,851</b>	<b>59,472</b>

\* For murder the count given is for the number of victims, not incidents.

**TABLE 3.1D: NUMBER OF RECORDED CRIMINAL INCIDENTS FOR MAJOR OFFENCES, OVER THE 12 MONTHS TO JUNE 2017, NSW SAs**

<i>NSW Statistical Area</i>	Murder *	Domestic violence related assault	Non-domestic violence related assault	Sexual assault	Indecent assault, act of indecency and other sexual offences	Robbery without a weapon	Robbery with a firearm	Robbery with a weapon not a firearm	Break and enter dwelling	Break and enter non-dwelling	Motor vehicle theft	Steal from motor vehicle	Steal from retail store	Steal from dwelling	Steal from person	Fraud	Malicious damage to property
Greater Sydney	44	16,207	17,993	2,844	3,898	1,081	99	529	14,638	4,768	7,423	22,494	15,438	10,956	3,664	35,591	32,709
Capital Region	1	672	821	204	226	14	1	3	625	324	274	1,020	456	473	31	833	1,832
Central West	5	1,070	1,153	247	330	21	6	23	1,333	534	407	1,227	692	805	70	1,030	2,729
Coffs Harbour - Grafton	0	732	719	159	196	16	2	13	561	323	251	582	366	513	58	609	1,399
Far West and Orana	2	1,162	1,003	228	213	16	4	16	1,693	576	468	1,396	646	737	79	651	2,369
Hunter Valley excluding Newcastle	1	1,332	1,108	252	291	25	10	24	1,340	620	868	2,000	752	1,097	88	1,290	2,792
Illawarra	1	944	1,075	197	247	51	6	29	1,024	470	565	1,892	1,124	770	104	1,159	2,356
Mid North Coast	1	991	997	243	285	20	2	27	1,020	692	420	886	574	786	81	899	2,283
Murray	3	509	528	113	158	14	4	6	591	327	238	815	379	506	27	546	1,257
New England and North West	4	1,258	1,237	237	274	35	4	32	1,732	710	463	1,393	688	1,048	65	972	3,082
Newcastle and Lake Macquarie	2	1,555	1,760	341	458	68	11	51	1,761	650	1,069	3,424	1,534	1,367	241	2,807	4,274
Richmond - Tweed	6	898	1,158	221	273	30	2	17	853	402	431	1,214	571	675	129	1,211	2,020
Riverina	2	900	858	145	155	13	1	16	1,340	432	352	1,173	627	722	50	661	1,939
Southern Highlands and Shoalhaven	0	505	536	126	159	9	0	13	503	232	192	562	289	361	18	533	1,226
<b>NSW</b>	<b>74</b>	<b>28,741</b>	<b>32,089</b>	<b>5,615</b>	<b>7,188</b>	<b>1,417</b>	<b>152</b>	<b>800</b>	<b>29,014</b>	<b>11,063</b>	<b>13,423</b>	<b>40,080</b>	<b>24,136</b>	<b>20,816</b>	<b>4,705</b>	<b>48,803</b>	<b>62,382</b>

\* For murder the count given is for the number of victims, not incidents.

**TABLE 3.2A: TRENDS<sup>^</sup> IN RECORDED CRIMINAL INCIDENTS FOR MAJOR OFFENCES OVER THE 24 MONTHS TO JUNE 2018, GREATER SYDNEY SAs**

Greater Sydney Statistical Area	Murder *	Domestic violence related assault	Non-domestic violence related assault	Sexual assault	Indecent assault, act of indecency and other sexual offences	Robbery without a weapon	Robbery with a firearm	Robbery with a weapon not a firearm	Break and enter dwelling	Break and enter non-dwelling	Motor vehicle theft	Steal from motor vehicle	Steal from retail store	Steal from dwelling	Steal from person	Fraud	Malicious damage to property
Baulkham Hills and Hawkesbury	.	ns	ns	28.2	ns	.	.	.	ns	ns	ns	ns	ns	ns	-26.7	ns	-13.6
Blacktown	.	ns	ns	ns	ns	ns	.	ns	ns	ns	ns	12.0	ns	ns	ns	20.5	ns
Central Coast	.	ns	ns	ns	ns	ns	.	ns	-23.6	ns	ns	-25.2	ns	ns	ns	ns	-10.9
City and Inner South	.	ns	ns	ns	37.9	ns	.	ns	ns	ns	ns	ns	ns	ns	ns	ns	-2.0
Eastern Suburbs	.	ns	ns	ns	ns	ns	.	.	-27.2	-40.8	ns	ns	ns	-22.7	ns	ns	ns
Inner South West	.	-16.2	ns	17.8	ns	ns	.	ns	ns	ns	ns	ns	ns	ns	ns	ns	ns
Inner West	.	ns	-10.9	ns	ns	ns	.	ns	-17.4	ns	ns	-19.3	ns	-28.5	ns	ns	-7.9
North Sydney and Hornsby	.	ns	ns	ns	ns	ns	.	.	ns	-10.5	ns	ns	ns	ns	ns	ns	ns
Northern Beaches	.	ns	ns	ns	ns	ns	.	.	ns	ns	ns	ns	ns	ns	ns	ns	ns
Outer South West	.	ns	ns	ns	ns	ns	.	.	ns	ns	ns	ns	ns	ns	ns	ns	-9.9
Outer West and Blue Mountains	.	ns	ns	ns	10.1	ns	.	ns	16.5	ns	ns	ns	ns	ns	ns	ns	ns
Parramatta	.	ns	ns	ns	ns	ns	ns	ns	ns	ns	ns	11.4	ns	ns	ns	ns	-9.1
Ryde	.	ns	ns	ns	ns	.	.	.	ns	ns	ns	ns	ns	ns	73.8	ns	ns
South West	.	ns	ns	ns	ns	ns	.	ns	ns	ns	ns	-17.1	ns	-19.1	ns	ns	ns
Sutherland	.	ns	ns	ns	ns	.	.	.	ns	ns	ns	ns	ns	ns	ns	ns	-11.3

<sup>^</sup> For further explanation of **trend results**, see page 42, Notes [5] and [6].

**TABLE 3.2B: RATIO TO NSW RATE<sup>^</sup> OF RECORDED CRIMINAL INCIDENTS PER 100,000 POPULATION FOR MAJOR OFFENCES OVER THE 12 MONTHS TO JUNE 2018, GREATER SYDNEY SAs**

Greater Sydney Statistical Area	Murder *	Domestic violence related assault	Non-domestic violence related assault	Sexual assault	Indecent assault, act of indecency and other sexual offences	Robbery without a weapon	Robbery with a firearm	Robbery with a weapon not a firearm	Break and enter dwelling	Break and enter non-dwelling	Motor vehicle theft	Steal from motor vehicle	Steal from retail store	Steal from dwelling	Steal from person	Fraud	Malicious damage to property
Baulkham Hills and Hawkesbury	0.6	0.4	0.3	0.6	0.5	0.3	0.2	0.2	0.5	0.4	0.4	0.5	0.4	0.5	0.2	0.7	0.4
Blacktown	2.5	1.6	1.2	1.1	1.1	2.0	1.5	1.7	1.3	0.8	1.4	1.7	1.2	1.1	1.4	1.6	1.2
Central Coast	0.9	1.4	1.1	1.1	1.2	0.8	0.9	1.0	0.9	0.9	1.2	0.9	0.8	0.9	0.8	1.0	1.2
City and Inner South	1.3	1.1	2.7	1.3	2.0	3.2	2.3	2.1	0.8	1.4	1.0	1.0	3.1	1.6	6.6	2.6	1.4
Eastern Suburbs	1.0	0.5	0.9	0.7	0.6	0.8	0.9	0.4	0.6	0.3	0.7	0.6	1.0	0.9	1.1	1.1	0.7
Inner South West	1.9	0.8	0.7	0.6	0.5	1.1	1.2	0.8	0.6	0.5	0.8	0.8	0.5	0.5	0.5	0.9	0.7
Inner West	0.5	0.5	0.6	0.5	0.6	1.0	0.7	1.1	0.8	0.6	0.7	0.7	0.7	0.7	1.0	1.2	0.6
North Sydney and Hornsby	0.3	0.3	0.4	0.4	0.6	0.4	0.2	0.4	0.6	0.6	0.3	0.5	0.9	0.6	0.7	0.8	0.5
Northern Beaches	0.5	0.4	0.5	0.5	0.5	0.5	0.4	0.3	0.4	0.5	0.5	0.7	0.6	0.7	0.5	0.7	0.5
Outer South West	0.5	1.3	0.8	1.1	1.0	1.0	1.3	1.4	0.8	0.6	0.8	0.8	1.1	0.8	0.5	0.7	1.0
Outer West and Blue Mountains	0.5	1.4	1.0	1.4	1.3	1.2	0.7	1.0	1.1	0.9	1.2	1.1	1.1	1.0	0.9	1.2	1.2
Parramatta	0.9	1.0	0.9	0.8	0.7	1.9	2.2	1.3	1.0	0.7	1.0	1.2	0.9	0.9	1.3	1.3	0.7
Ryde	0.8	0.4	0.4	0.5	0.7	0.3	1.4	0.3	0.9	0.6	0.4	0.6	0.9	0.6	0.7	0.9	0.5
South West	0.3	1.0	0.8	0.7	0.8	1.5	1.8	1.8	0.8	0.6	1.1	0.9	0.8	0.7	0.8	1.0	0.8
Sutherland	0.0	0.6	0.6	0.5	0.5	0.3	0.0	0.2	0.5	0.4	0.5	0.7	0.8	0.6	0.4	0.6	0.7

<sup>^</sup> For further explanation of **rate calculation populations** and the **ratio to NSW rate**, see page 42, Footnote 2 and Note [8].

\* The rate calculations on the offence of murder is for the number of victims, not incidents.



**TABLE 3.2C: NUMBER OF RECORDED CRIMINAL INCIDENTS FOR MAJOR OFFENCES, OVER THE 12 MONTHS TO JUNE 2018, GREATER SYDNEY SAs**

Greater Sydney Statistical Area	Murder *	Domestic violence related assault	Non-domestic violence related assault	Sexual assault	Indecent assault, act of indecency and other sexual offences	Robbery without a weapon	Robbery with a firearm	Robbery with a weapon not a firearm	Break and enter dwelling	Break and enter non-dwelling	Motor vehicle theft	Steal from motor vehicle	Steal from retail store	Steal from dwelling	Steal from person	Fraud	Malicious damage to property
Baulkham Hills and Hawkesbury	1	338	319	100	116	12	1	4	439	113	161	601	305	297	33	1,037	635
Blacktown	6	2,048	1,706	292	378	131	10	69	1,630	393	833	2,939	1,288	974	273	3,535	3,328
Central Coast	2	1,693	1,481	290	416	50	6	37	1,017	398	682	1,559	848	767	157	2,226	2,977
City and Inner South	3	1,347	3,775	321	658	202	15	82	990	642	554	1,673	3,312	1,341	1,261	5,609	3,532
Eastern Suburbs	2	580	1,046	141	184	42	5	13	561	116	352	853	933	655	186	1,944	1,463
Inner South West	8	1,742	1,633	251	293	119	14	56	1,161	384	847	2,240	989	814	178	3,445	3,000
Inner West	1	577	712	121	189	58	4	40	833	232	342	1,113	675	569	183	2,329	1,440
North Sydney and Hornsby	1	476	634	139	257	35	2	18	939	333	231	1,044	1,170	677	163	2,214	1,636
Northern Beaches	1	384	586	105	121	25	2	8	419	178	228	885	525	460	83	1,194	1,099
Outer South West	1	1,261	876	227	280	48	7	43	754	223	366	1,110	959	508	79	1,284	1,980
Outer West and Blue Mountains	1	1,591	1,310	328	394	72	4	34	1,187	374	642	1,661	1,082	821	161	2,382	2,845
Parramatta	3	1,696	1,664	266	341	162	20	67	1,669	429	805	2,737	1,260	999	351	3,824	2,578
Ryde	1	291	317	73	124	9	5	7	567	142	114	521	523	275	73	1,148	775
South West	1	1,615	1,328	239	345	122	15	84	1,236	342	744	1,890	1,044	690	193	2,790	2,484
Sutherland	0	478	594	82	112	11	0	4	375	117	201	737	570	313	49	888	1,180

\* For murder the count given is for the number of victims, not incidents.

**TABLE 3.2D: NUMBER OF RECORDED CRIMINAL INCIDENTS FOR MAJOR OFFENCES, OVER THE 12 MONTHS TO JUNE 2017, GREATER SYDNEY SAs**

Greater Sydney Statistical Area	Murder *	Domestic violence related assault	Non-domestic violence related assault	Sexual assault	Indecent assault, act of indecency and other sexual offences	Robbery without a weapon	Robbery with a firearm	Robbery with a weapon not a firearm	Break and enter dwelling	Break and enter non-dwelling	Motor vehicle theft	Steal from motor vehicle	Steal from retail store	Steal from dwelling	Steal from person	Fraud	Malicious damage to property
Baulkham Hills and Hawkesbury	1	320	351	78	92	10	0	3	548	158	184	615	328	295	45	948	735
Blacktown	4	2,068	1,650	277	338	165	12	76	1,636	340	845	2,625	1,159	1,014	278	2,933	3,481
Central Coast	3	1,682	1,442	289	393	42	5	27	1,332	455	735	2,083	886	775	168	2,064	3,342
City and Inner South	4	1,337	3,547	295	477	218	13	88	983	657	582	1,897	3,314	1,362	1,386	5,724	3,486
Eastern Suburbs	1	650	1,033	138	202	42	0	22	771	196	352	929	1,019	847	226	1,901	1,637
Inner South West	11	2,078	1,601	213	304	117	13	54	1,231	291	925	2,318	976	894	175	3,642	3,242
Inner West	1	526	799	123	182	48	1	22	1,009	293	365	1,379	724	796	163	2,436	1,564
North Sydney and Hornsby	0	459	711	153	221	37	1	10	1,066	372	238	1,030	1,105	715	141	2,019	1,659
Northern Beaches	3	338	649	97	125	23	0	4	420	206	211	826	523	416	94	1,121	1,171
Outer South West	1	1,247	896	231	285	49	8	19	830	298	444	1,147	981	556	111	1,566	2,197
Outer West and Blue Mountains	2	1,523	1,344	282	358	73	4	51	1,019	428	662	1,776	1,051	780	198	2,233	2,856
Parramatta	5	1,648	1,702	275	359	126	29	73	1,795	495	778	2,456	1,235	1,016	360	3,859	2,836
Ryde	1	279	319	60	88	12	2	6	487	119	142	538	463	323	42	1,109	792
South West	6	1,582	1,375	231	338	104	10	62	1,209	344	766	2,279	1,136	853	201	3,193	2,380
Sutherland	1	470	574	102	136	15	1	12	302	116	194	596	538	314	76	843	1,331

\* For murder the count given is for the number of victims, not incidents.

**TABLE 3.3A: TRENDS\* IN RECORDED CRIMINAL INCIDENTS FOR MAJOR OFFENCES  
OVER THE 24 MONTHS TO JUNE 2018, NSW LGAs**

NSW LGA	Murder*	Domestic violence related assault	Non-domestic violence related assault	Sexual assault	Indecent assault, act of indecency and other sexual offences	Robbery without a weapon	Robbery with a firearm	Robbery with a weapon not a firearm	Break and enter dwelling	Break and enter non-dwelling	Motor vehicle theft	Steal from motor vehicle	Steal from retail store	Steal from dwelling	Steal from person	Fraud	Malicious damage to property
Albury	.	ns	ns	ns	ns	.	.	.	ns	ns	ns	ns	ns	ns	.	ns	ns
Armidale Regional	.	ns	ns	ns	ns	.	.	.	ns	-51.6	ns	ns	ns	ns	.	ns	-22.7
Ballina	.	ns	ns	ns	ns	.	.	.	ns	ns	ns	32.4	ns	ns	.	ns	ns
Balranald	.	.	.	.	.	.	.	.	.	.	.	.	.	.	.	.	ns
Bathurst Regional	.	ns	ns	ns	ns	.	.	.	ns	-49.5	ns	ns	ns	ns	ns	ns	ns
Bayside	.	ns	ns	ns	ns	ns	.	.	ns	ns	ns	ns	26.9	-21.3	ns	ns	ns
Bega Valley	.	ns	ns	ns	ns	.	.	.	ns	ns	ns	-45.1	ns	ns	.	ns	ns
Bellingen	.	ns	ns	.	.	.	.	.	ns	ns	.	ns	.	ns	.	ns	ns
Berrigan	.	.	.	.	.	.	.	.	.	.	.	.	.	.	.	.	-37.3
Blacktown	.	ns	ns	ns	ns	ns	.	ns	ns	ns	ns	11.2	ns	ns	ns	20.3	ns
Bland	.	.	.	.	.	.	.	.	.	.	.	.	.	.	.	ns	ns
Blayney	.	.	ns	.	.	.	.	.	-38.5	.	.	ns	.	.	.	.	ns
Blue Mountains	.	-19.7	ns	ns	ns	.	.	.	ns	ns	ns	ns	ns	ns	.	ns	34.8
Bogan	.	ns	.	.	.	.	.	.	.	.	.	.	.	.	.	.	ns
Bourke	.	ns	ns	.	.	.	.	.	-31.5	.	.	ns	ns	ns	.	ns	ns
Brewarrina	.	ns	ns	.	.	.	.	.	-50.8	.	.	ns	.	.	.	.	ns
Broken Hill	.	ns	ns	.	ns	.	.	.	ns	ns	-56.7	ns	ns	ns	.	-34.6	ns
Burwood	.	ns	ns	.	ns	.	.	.	-28.1	ns	ns	-15.8	ns	ns	43.3	ns	ns
Byron	.	ns	ns	ns	ns	.	.	.	ns	ns	ns	ns	ns	ns	ns	-24.1	ns
Cabonne	.	ns	.	.	.	.	.	.	ns	.	.	.	.	ns	.	ns	ns
Camden	.	ns	ns	ns	ns	.	.	.	ns	-29.9	ns	ns	ns	ns	.	ns	ns
Campbelltown	.	ns	ns	ns	ns	ns	.	.	ns	ns	ns	ns	ns	ns	ns	ns	-8.4
Canada Bay	.	ns	ns	ns	ns	.	.	.	ns	ns	ns	ns	ns	-28.2	ns	ns	ns
Canterbury-Bankstown	.	-17.3	ns	ns	ns	ns	.	ns	ns	ns	-16.3	-14.8	ns	ns	ns	-8.6	-7.9
Carrathool	.	.	.	.	.	.	.	.	.	.	.	.	.	.	.	.	ns
Central Coast	.	ns	ns	ns	ns	ns	.	ns	-23.6	ns	ns	-25.2	ns	ns	ns	ns	-10.9
Central Darling	.	ns	ns	.	.	.	.	.	-60.6	ns	.	ns	.	.	.	.	ns
Cessnock	.	ns	ns	ns	ns	.	.	.	-17.4	ns	ns	-30.8	ns	ns	.	ns	ns
Clarence Valley	.	ns	ns	ns	ns	.	.	.	ns	ns	ns	ns	ns	ns	.	58.1	-16.1
Cobar	.	ns	ns	.	.	.	.	.	ns	.	.	ns	.	.	.	.	ns
Coffs Harbour	.	ns	25.6	ns	ns	.	.	.	58.5	ns	37.8	45.9	ns	ns	ns	51.3	ns
Coolamon	.	.	.	.	.	.	.	.	.	.	.	.	.	.	.	.	.
Coonamble	.	ns	ns	.	.	.	.	.	ns	ns	.	ns	.	ns	.	.	ns
Cootamundra-Gundagai	.	ns	ns	.	.	.	.	.	ns	.	.	ns	.	ns	.	-26.3	ns
Cowra	.	ns	ns	.	.	.	.	.	ns	ns	.	-53.0	ns	-16.7	.	ns	ns
Cumberland	.	ns	ns	ns	ns	ns	.	-28.2	ns	ns	ns	19.7	ns	ns	ns	ns	ns
Dubbo Regional	.	ns	ns	ns	68.0	.	.	.	-23.0	ns	ns	ns	-29.5	ns	-28.6	ns	ns
Dungog	.	ns	.	.	.	.	.	.	.	.	.	.	.	ns	.	ns	ns
Edward River	.	ns	ns	.	.	.	.	.	ns	.	.	ns	ns	ns	.	ns	ns
Eurobodalla	.	ns	ns	ns	ns	.	.	.	ns	ns	ns	ns	ns	ns	.	ns	ns
Fairfield	.	ns	ns	ns	ns	ns	.	ns	ns	ns	-11.7	ns	ns	ns	ns	ns	ns
Federation	.	ns	ns	.	.	.	.	.	ns	ns	.	7.9	.	ns	.	ns	ns
Forbes	.	ns	ns	.	.	.	.	.	ns	38.6	.	ns	.	ns	.	ns	ns
Georges River	.	ns	ns	ns	ns	ns	.	.	ns	ns	ns	14.3	ns	ns	ns	ns	-9.1
Gilgandra	.	ns	ns	.	.	.	.	.	ns	.	.	.	.	ns	.	.	ns
Glen Innes Severn	.	ns	ns	.	.	.	.	.	-60.6	ns	.	.	.	-21.1	.	ns	-28.0
Goulburn Mulwaree	.	ns	ns	ns	ns	.	.	.	ns	ns	ns	ns	ns	ns	.	ns	ns
Greater Hume Shire	.	ns	.	.	.	.	.	.	.	.	.	ns	.	ns	.	ns	ns
Griffith	.	ns	ns	.	.	.	.	.	-10.6	ns	ns	ns	ns	ns	.	ns	ns
Gunnedah	.	ns	ns	.	.	.	.	.	ns	.	123.8	ns	ns	ns	.	ns	ns
Gwydir	.	.	.	.	.	.	.	.	.	.	.	.	.	.	.	.	ns
Hawkesbury	.	ns	ns	57.8	ns	.	.	.	ns	ns	ns	ns	ns	ns	.	ns	ns
Hay	.	.	.	.	.	.	.	.	.	.	.	.	.	.	.	.	34.3
Hilltops	.	36.3	ns	.	ns	.	.	.	ns	ns	ns	ns	ns	82.5	.	ns	ns
Hornsby	.	ns	-24.9	ns	ns	.	.	.	-35.5	ns	ns	ns	ns	ns	ns	ns	-11.5
Hunters Hill	.	ns	ns	.	.	.	.	.	ns	.	.	ns	.	ns	.	ns	ns
Inner West	.	ns	ns	ns	ns	ns	.	ns	ns	ns	ns	ns	ns	-23.3	ns	ns	-10.3
Inverell	.	ns	ns	ns	ns	.	.	.	ns	11.8	76.2	95.3	ns	29.3	.	ns	25.5
Junee	.	.	.	.	.	.	.	.	.	.	.	.	.	.	.	.	ns
Kempsey	.	ns	ns	ns	ns	.	.	.	ns	ns	ns	ns	ns	ns	.	ns	ns
Kiama	.	ns	ns	.	.	.	.	.	42.9	ns	ns	ns	.	ns	.	ns	ns
Ku-ring-gai	.	ns	ns	ns	ns	.	.	.	ns	-45.7	ns	ns	ns	ns	.	ns	ns
Kyogle	.	ns	ns	.	.	.	.	.	ns	ns	.	.	.	.	.	.	ns
Lachlan	.	ns	ns	.	.	.	.	.	ns	ns	.	ns	.	ns	.	.	ns
Lake Macquarie	.	ns	ns	ns	ns	ns	.	.	-21.3	ns	ns	ns	ns	-18.0	ns	ns	ns

**TABLE 3.3A: TRENDS\* IN RECORDED CRIMINAL INCIDENTS FOR MAJOR OFFENCES  
OVER THE 24 MONTHS TO JUNE 2018, NSW LGAs**

NSW LGA	Murder*	Domestic violence related assault	Non-domestic violence related assault	Sexual assault	Indecent assault, act of indecency and other sexual offences	Robbery without a weapon	Robbery with a firearm	Robbery with a weapon not a firearm	Break and enter dwelling	Break and enter non-dwelling	Motor vehicle theft	Steal from motor vehicle	Steal from retail store	Steal from dwelling	Steal from person	Fraud	Malicious damage to property
Lane Cove	.	ns	ns	.	.	.	.	.	ns	ns	ns	ns	.	ns	.	ns	ns
Leeton	.	ns	ns	.	.	.	.	.	ns	ns	ns	ns	ns	16.7	.	ns	-15.3
Lismore	.	ns	ns	ns	ns	.	.	.	ns	ns	30.8	ns	ns	ns	.	ns	ns
Lithgow	.	ns	ns	ns	.	.	.	.	-41.4	-51.4	ns	ns	ns	ns	.	ns	-35.9
Liverpool	.	ns	ns	ns	ns	ns	.	ns	ns	ns	ns	ns	-12.9	-22.4	ns	ns	ns
Liverpool Plains	.	ns	ns	.	.	.	.	.	ns	.	.	.	.	ns	.	ns	ns
Lockhart	.	.	.	.	.	.	.	.	.	.	.	.	.	.	.	.	.
Lord Howe Island	.	.	.	.	.	.	.	.	.	.	.	.	.	.	.	.	.
Maitland	.	ns	18.6	ns	ns	.	.	.	ns	ns	ns	-34.8	29.4	ns	ns	31.3	ns
Mid-Coast	.	ns	ns	ns	ns	.	.	.	ns	ns	ns	43.8	24.9	ns	ns	ns	ns
Mid-Western Regional	.	ns	ns	ns	ns	.	.	.	ns	.	ns	ns	ns	ns	.	ns	ns
Moree Plains	.	-21.3	ns	ns	ns	.	.	.	ns	ns	ns	ns	ns	ns	.	ns	-6.0
Mosman	.	ns	ns	.	.	.	.	.	ns	.	.	ns	.	ns	.	ns	ns
Murray River	.	.	ns	.	.	.	.	.	ns	ns	.	ns	.	ns	.	ns	ns
Murrumbidgee	.	ns	.	.	.	.	.	.	.	.	.	.	.	.	.	.	ns
Muswellbrook	.	ns	ns	.	ns	.	.	.	ns	ns	ns	ns	-40.8	ns	.	ns	-19.8
Nambucca	.	ns	ns	ns	ns	.	.	.	61.8	ns	ns	ns	ns	ns	.	ns	ns
Narrabri	.	ns	ns	.	.	.	.	.	ns	ns	ns	ns	ns	-42.0	.	ns	-19.2
Narrandera	.	ns	ns	.	.	.	.	.	ns	ns	.	ns	-35.5	.	.	.	ns
Narromine	.	38.0	ns	.	.	.	.	.	ns	ns	.	ns	.	ns	.	ns	ns
Newcastle	.	ns	ns	ns	ns	-29.5	.	ns	ns	ns	ns	ns	ns	ns	ns	ns	ns
North Sydney	.	ns	ns	ns	ns	.	.	.	ns	ns	ns	ns	ns	ns	ns	ns	ns
Northern Beaches	.	ns	ns	ns	ns	ns	.	.	ns	ns	ns	ns	ns	ns	ns	ns	ns
Oberon	.	.	.	.	.	.	.	.	.	.	.	.	.	.	.	.	ns
Orange	.	ns	ns	ns	ns	.	.	.	-19.2	ns	ns	ns	-43.0	ns	.	ns	ns
Parkes	.	ns	ns	ns	ns	.	.	.	ns	ns	ns	ns	ns	ns	.	ns	-11.3
Parramatta	.	ns	ns	ns	ns	ns	.	ns	ns	ns	ns	13.9	ns	ns	ns	ns	ns
Penrith	.	ns	ns	ns	ns	ns	.	-40.4	21.1	ns	ns	-1.3	ns	ns	ns	ns	ns
Port Macquarie-Hastings	.	ns	ns	ns	ns	.	.	.	ns	ns	ns	ns	ns	ns	ns	ns	ns
Port Stephens	.	ns	ns	ns	ns	.	.	.	ns	ns	ns	-24.5	ns	ns	.	ns	ns
Queanbeyan-Palerang Regional	.	ns	ns	ns	ns	.	.	.	49.4	ns	ns	ns	73.5	ns	.	ns	-17.6
Randwick	.	ns	ns	ns	ns	ns	.	.	ns	ns	ns	ns	ns	-27.0	ns	ns	ns
Richmond Valley	.	ns	ns	ns	ns	.	.	.	ns	ns	ns	-41.9	ns	ns	.	ns	ns
Ryde	.	ns	ns	ns	ns	.	.	.	ns	ns	ns	ns	ns	ns	71.4	ns	ns
Shellharbour	.	ns	-23.6	ns	ns	.	.	.	ns	-46.3	ns	ns	33.0	ns	.	ns	ns
Shoalhaven	.	ns	ns	ns	ns	.	.	.	ns	ns	ns	ns	70.8	ns	.	ns	ns
Singleton	.	ns	ns	ns	ns	.	.	.	ns	ns	ns	ns	ns	ns	.	ns	ns
Snowy Monaro Regional	.	ns	ns	ns	ns	.	.	.	ns	.	.	.	.	ns	.	ns	ns
Snowy Valleys	.	ns	ns	.	ns	.	.	.	ns	ns	80.0	ns	ns	-40.2	.	ns	ns
Strathfield	.	69.6	ns	.	ns	.	.	.	-30.3	-64.4	-36.1	ns	ns	-55.2	ns	ns	ns
Sutherland Shire	.	ns	ns	ns	ns	.	.	.	ns	ns	ns	ns	ns	ns	ns	ns	-11.3
Sydney	.	ns	ns	ns	42.6	ns	.	ns	ns	ns	ns	-14.5	ns	ns	ns	-2.7	ns
Tamworth Regional	.	ns	ns	ns	ns	.	.	.	ns	ns	ns	38.0	ns	-20.0	ns	ns	ns
Temora	.	.	ns	.	.	.	.	.	.	.	.	.	.	.	.	.	ns
Tenterfield	.	ns	ns	.	.	.	.	.	-58.5	.	.	.	.	ns	.	ns	ns
The Hills Shire	.	ns	ns	ns	ns	.	.	.	ns	-37.3	ns	ns	ns	ns	ns	ns	-16.8
Tweed	.	ns	ns	ns	ns	.	.	.	ns	ns	ns	ns	ns	ns	ns	ns	ns
Unincorporated Far West	.	.	.	.	.	.	.	.	.	.	.	.	.	.	.	.	.
Upper Hunter Shire	.	ns	ns	.	.	.	.	.	ns	ns	.	ns	.	ns	.	ns	ns
Upper Lachlan Shire	.	.	.	.	.	.	.	.	.	.	.	.	.	.	.	.	ns
Uralla	.	.	.	.	.	.	.	.	.	.	.	.	.	.	.	.	ns
Wagga Wagga	.	ns	ns	ns	59.6	.	.	.	ns	16.5	ns	-23.4	ns	-19.8	ns	ns	ns
Walcha	.	.	.	.	.	.	.	.	.	.	.	.	.	.	.	.	.
Walgett	.	ns	ns	.	.	.	.	.	ns	ns	.	ns	ns	ns	.	.	ns
Warren	.	ns	ns	.	.	.	.	.	.	.	.	.	.	.	.	.	ns
Warrumbungle Shire	.	ns	ns	.	.	.	.	.	ns	.	.	ns	.	ns	.	ns	ns
Waverley	.	ns	ns	ns	ns	.	.	.	-40.7	-57.1	ns	ns	ns	-25.6	ns	ns	ns
Weddin	.	.	.	.	.	.	.	.	.	.	.	.	.	.	.	.	ns
Wentworth	.	102.4	ns	.	.	.	.	.	ns	ns	ns	-12.2	.	ns	.	.	ns
Willoughby	.	46.6	ns	ns	ns	.	.	.	ns	-9.2	22.7	ns	ns	ns	ns	ns	ns
Wingecarribee	.	-41.3	ns	.	ns	.	.	.	-38.3	-44.6	ns	ns	39.3	-61.0	.	ns	ns
Wollondilly	.	ns	ns	ns	ns	.	.	.	ns	-43.9	ns	ns	30.0	ns	.	-37.4	ns
Wollongong	.	ns	ns	27.1	ns	ns	.	80.0	ns	ns	ns	ns	ns	ns	ns	10.7	ns
Woollahra	.	ns	ns	ns	ns	.	.	.	ns	.	ns	-36.3	ns	ns	-46.2	ns	ns
Yass Valley	.	ns	ns	.	.	.	.	.	ns	ns	.	ns	.	ns	.	ns	ns
<b>NSW</b>	<b>ns</b>	<b>ns</b>	<b>ns</b>	<b>ns</b>	<b>7.3</b>	<b>ns</b>	<b>ns</b>	<b>ns</b>	<b>-6.5</b>	<b>-6.2</b>	<b>ns</b>	<b>ns</b>	<b>ns</b>	<b>ns</b>	<b>ns</b>	<b>ns</b>	<b>-4.7</b>

^ For further explanation of trend results, see page 42, Notes [5] and [6].

\* There were no LGAs with 20 murder victims, hence no trend tests were reported. The trend test for NSW on the offence of murder is for the number of victims, not incidents.

**TABLE 3.3B: RATIO NSW RATE OF RECORDED CRIMINAL INCIDENTS PER 100,000 POPULATION FOR MAJOR OFFENCES OVER THE 12 MONTHS TO JUNE 2018, NSW LGAs**

NSW LGA	Murder *	Domestic violence related assault	Non-domestic violence related assault	Sexual assault	Indecent assault, act of indecency and other sexual offences	Robbery without a weapon	Robbery with a firearm	Robbery with a weapon not a firearm	Break and enter dwelling	Break and enter non-dwelling	Motor vehicle theft	Steal from motor vehicle	Steal from retail store	Steal from dwelling	Steal from person	Fraud	Malicious damage to property	
Albury	2.7	1.5	1.5	1.2	1.4	0.9	1.0	0.8	1.8	1.6	1.5	2.2	1.8	1.8	0.7	0.9	1.6	
Armidale Regional	.	1.7	1.5	1.4	1.2	1.1	.	2.0	2.9	1.8	1.6	2.1	1.8	2.1	1.0	1.0	2.0	
Ballina	3.4	0.7	1.0	0.7	0.8	0.5	.	0.8	0.8	1.7	1.0	1.3	0.7	1.2	0.6	0.8	1.0	
Balranald	.	.	.	.	.	.	.	.	.	.	.	.	.	.	.	.	.	
Bathurst Regional	.	1.5	1.3	1.6	1.5	0.5	.	1.0	1.6	0.8	1.0	1.4	0.9	1.2	1.2	1.0	1.5	
Bayside	1.7	0.9	0.7	0.6	0.5	0.9	0.9	0.9	0.6	0.5	0.8	0.8	0.9	0.7	0.9	1.0	0.7	
Bega Valley	8.4	0.8	0.8	1.2	1.2	0.2	.	0.3	0.6	1.1	0.5	0.6	0.5	0.9	0.4	0.4	0.9	
Bellingen	.	0.8	0.6	1.0	0.7	.	.	0.7	0.7	1.6	1.0	0.5	0.0	0.8	0.7	0.5	0.8	
Berrigan	.	0.5	0.3	1.4	0.8	.	.	.	0.5	1.4	0.5	0.6	0.3	0.9	.	0.3	0.6	
Blacktown	2.5	1.6	1.2	1.1	1.1	2.0	1.5	1.8	1.3	0.8	1.4	1.7	1.2	1.1	1.4	1.6	1.2	
Bland	.	1.0	0.4	0.9	0.5	.	.	.	0.7	1.2	1.4	0.7	0.3	0.5	.	0.5	0.6	
Blayney	.	1.5	0.8	0.9	1.8	.	.	.	0.9	1.3	0.9	0.9	0.1	0.5	0.5	0.3	0.8	
Blue Mountains	.	0.8	0.7	1.4	0.9	0.4	0.7	0.4	0.6	0.6	0.4	0.6	0.4	0.7	0.4	0.6	1.1	
Bogan	.	.	.	.	.	.	.	.	.	.	.	.	.	.	.	.	.	
Bourke	.	.	.	.	.	.	.	.	.	.	.	.	.	.	.	.	.	
Brewarrina	.	3.0	2.1	0.8	1.7	1.2	.	1.5	2.9	2.0	1.0	1.6	0.7	2.4	0.5	0.4	2.4	
Broken Hill	.	3.7	0.5	0.7	0.5	0.8	3.1	1.3	2.1	0.7	0.7	0.6	0.7	2.2	0.8	2.0	1.7	0.6
Burwood	4.4	0.8	1.9	1.6	1.9	0.7	.	0.3	0.9	1.4	1.1	1.2	1.0	1.3	2.6	0.8	1.3	
Byron	.	0.6	0.3	1.6	0.7	.	.	.	0.6	1.4	0.8	0.4	0.1	0.6	.	0.3	0.4	
Cabonne	.	1.1	0.6	0.6	0.9	0.1	0.6	0.9	0.5	0.4	0.7	0.6	0.5	0.5	0.2	0.7	0.7	
Camden	0.9	1.4	1.0	1.3	1.2	1.5	1.6	2.0	1.0	0.8	1.0	1.1	1.6	1.0	0.8	0.9	1.2	
Campbelltown	.	0.3	0.3	0.4	0.5	0.5	0.6	0.8	0.8	0.5	0.7	0.7	0.3	0.6	0.5	1.0	0.5	
Canada Bay	.	2.0	0.8	0.7	0.7	0.5	1.3	1.9	1.1	0.6	0.5	1.0	0.8	0.5	0.6	0.5	0.9	0.7
Canterbury-Bankstown	.	.	.	.	.	.	.	.	.	.	.	.	.	.	.	.	.	
Carrathool	.	.	.	.	.	.	.	.	.	.	.	.	.	.	.	.	.	
Central Coast	0.9	1.4	1.1	1.1	1.2	0.8	0.9	1.0	0.9	0.9	1.2	0.9	0.8	0.9	0.8	1.0	1.2	
Central Darling	.	.	.	.	.	.	.	.	.	.	.	.	.	.	.	.	.	
Cessnock	.	1.6	0.9	2.2	1.4	0.5	0.9	1.2	1.7	2.3	3.1	1.4	0.8	1.8	0.6	0.8	1.5	
Clarence Valley	.	1.2	1.2	1.0	1.1	0.1	.	0.2	1.0	2.1	1.2	0.9	0.7	1.9	0.6	1.1	1.2	
Cobar	.	1.6	2.3	1.7	3.6	.	.	1.9	1.4	1.9	2.1	1.8	0.1	0.6	0.4	0.5	2.7	
Coffs Harbour	.	1.8	1.7	2.2	1.9	1.6	1.4	2.1	1.9	2.2	1.5	1.2	1.0	1.5	1.0	1.1	1.3	
Coolamon	32.6	0.6	0.5	1.2	0.5	.	.	.	0.5	2.7	1.4	0.3	0.1	0.5	.	0.2	0.4	
Coonamble	.	3.6	2.5	2.9	1.5	2.6	.	.	4.8	9.9	1.8	2.7	1.8	2.5	1.3	1.1	3.7	
Cootamundra-Gundagai	.	1.4	0.8	0.9	1.1	.	.	0.8	1.2	0.7	1.0	0.6	0.6	1.5	0.3	1.2	1.4	
Cowra	.	1.3	1.4	0.9	1.4	1.3	.	0.7	2.4	2.6	0.9	0.6	0.9	1.6	0.6	0.8	1.5	
Cumberland	1.3	1.0	0.9	0.7	0.6	2.1	1.8	1.1	1.0	0.7	1.1	1.2	0.5	0.7	0.9	1.3	0.7	
Dubbo Regional	.	2.2	2.0	2.1	2.5	0.6	.	1.0	3.6	2.9	2.4	2.6	1.8	2.0	1.2	1.1	2.7	
Dungog	.	0.9	0.5	1.2	1.2	.	.	.	0.7	1.0	0.5	0.2	0.0	0.9	.	0.4	0.7	
Edward River	.	1.3	0.9	2.4	1.2	.	.	1.0	0.9	1.4	0.4	0.8	0.7	0.9	0.2	0.5	1.4	
Eurobodalla	.	1.2	1.3	1.3	1.1	0.4	.	0.7	1.4	1.7	1.0	1.0	0.7	1.2	0.1	0.5	1.3	
Fairfield	.	0.9	0.7	0.7	0.7	1.8	1.2	2.0	0.6	0.5	1.0	0.8	0.6	0.5	0.7	1.0	0.7	
Federation	11.5	0.6	0.7	0.6	1.0	.	.	0.7	0.8	1.9	0.6	0.7	0.2	1.6	0.1	0.5	1.0	
Forbes	14.6	1.5	1.9	0.9	0.9	.	.	.	1.7	4.6	1.0	1.3	0.9	2.2	0.4	0.7	1.7	
Georges River	0.9	0.7	0.6	0.4	0.5	0.9	0.7	0.5	0.4	0.5	0.6	0.5	0.7	0.5	0.7	0.9	0.6	
Gilgandra	.	1.9	1.1	2.1	2.1	1.2	.	2.1	2.9	4.8	1.4	1.4	0.5	2.5	0.4	0.5	1.1	
Glen Innes Severn	.	2.1	1.9	2.2	1.1	1.2	.	1.0	1.3	2.4	1.1	0.3	0.7	2.0	0.2	0.6	1.7	
Goulburn Mulwaree	.	1.1	1.0	2.1	1.7	0.2	.	0.6	0.7	0.8	0.7	0.8	1.7	1.2	0.2	0.9	1.1	
Greater Hume Shire	.	0.5	0.3	1.3	1.0	0.5	.	.	1.0	1.1	1.1	0.6	0.1	0.8	0.3	0.4	0.6	
Griffith	.	2.1	1.3	1.1	0.7	1.2	.	1.7	1.6	2.3	1.2	2.3	1.3	1.5	0.3	0.5	1.8	
Gunnedah	.	1.4	1.6	1.7	1.3	0.4	.	.	1.3	1.1	2.2	1.0	1.1	2.3	0.1	0.9	1.9	
Gwydir	.	1.0	0.6	1.5	1.1	.	.	.	0.4	0.6	1.2	0.5	0.1	1.4	0.3	0.3	0.7	
Hawkesbury	.	1.1	0.7	1.4	1.2	0.5	.	0.5	0.7	0.7	1.0	0.7	0.8	0.7	0.5	0.7	0.8	
Hay	.	.	.	.	.	.	.	.	.	.	.	.	.	.	.	.	.	
Hilltops	.	1.6	1.4	1.3	1.8	0.9	.	0.5	0.7	1.3	1.2	0.8	0.6	1.5	0.1	0.5	1.5	
Hornsby	.	0.3	0.3	0.5	0.6	0.4	0.3	0.1	0.4	0.4	0.4	0.5	0.6	0.4	0.6	0.7	0.5	
Hunters Hill	.	0.4	0.5	0.6	1.0	.	.	3.5	.	0.8	0.8	0.7	0.6	0.2	0.8	0.2	0.6	0.7
Inner West	0.7	0.5	0.8	0.7	0.8	1.1	1.6	1.1	0.7	0.6	0.8	0.8	0.6	0.9	1.0	1.2	0.8	
Inverell	.	1.7	1.4	1.7	2.0	1.0	.	0.5	2.8	2.5	1.3	1.5	1.5	2.5	0.3	0.5	2.1	
Junee	.	0.5	0.6	1.0	0.6	.	.	.	1.1	1.5	0.6	0.9	0.2	0.9	.	0.1	1.1	
Kempsey	.	2.0	1.6	1.8	1.4	2.5	3.5	1.8	3.1	2.2	1.9	1.1	1.5	2.7	1.4	0.7	1.5	
Kiama	.	0.4	0.3	0.5	0.5	.	.	0.8	0.6	1.3	0.8	1.0	0.1	0.6	0.2	0.4	0.6	
Ku-ring-gai	.	0.2	0.2	0.3	0.4	0.3	.	0.1	0.7	0.3	0.2	0.4	0.1	0.5	0.3	0.6	0.3	
Kyogle	.	1.5	1.0	1.3	2.0	0.6	.	.	1.0	1.6	0.8	0.2	0.2	0.7	0.2	0.2	1.2	
Lachlan	.	2.0	1.6	1.5	2.7	.	8.1	.	1.0	4.3	1.5	0.7	0.3	1.8	.	0.3	2.3	
Lake Macquarie	.	1.0	0.8	1.3	1.2	0.6	0.8	0.9	0.9	1.2	1.6	1.1	1.1	0.9	0.6	1.1	1.2	

**TABLE 3.3B: RATIO NSW RATE\* OF RECORDED CRIMINAL INCIDENTS PER 100,000 POPULATION FOR MAJOR OFFENCES OVER THE 12 MONTHS TO JUNE 2018, NSW LGAs**

NSW LGA	Murder*	Domestic violence related assault	Non-domestic violence related assault	Sexual assault	Indecent assault, act of indecency and other sexual offences	Robbery without a weapon	Robbery with a firearm	Robbery with a weapon not a firearm	Break and enter dwelling	Break and enter non-dwelling	Motor vehicle theft	Steal from motor vehicle	Steal from retail store	Steal from dwelling	Steal from person	Fraud	Malicious damage to property
Lane Cove	.	0.3	0.3	0.5	0.5	0.1	.	0.2	0.8	1.0	0.4	0.6	0.3	0.7	0.2	0.7	0.4
Leeton	12.6	1.8	1.2	2.4	1.8	.	.	2.3	2.2	2.7	1.2	1.7	0.8	1.5	0.3	0.6	1.1
Lismore	.	1.2	1.5	1.9	1.5	1.1	.	1.6	1.3	1.4	1.6	1.1	0.9	1.4	0.8	0.6	1.4
Lithgow	.	1.1	1.4	1.2	1.1	0.2	.	0.4	1.0	1.2	0.9	0.6	0.5	1.3	0.7	1.1	1.2
Liverpool	0.7	1.1	0.8	0.9	1.0	1.5	1.9	1.5	1.0	0.7	1.2	1.1	1.0	0.8	0.9	1.1	0.8
Liverpool Plains	.	1.3	1.2	0.3	1.5	.	.	.	0.8	1.7	0.6	0.3	0.3	1.7	.	0.4	1.8
Lockhart	.	0.8	0.7	1.2	0.6	.	.	.	0.7	0.7	0.6	0.5	0.1	0.5	.	0.2	0.8
Lord Howe Island	.	.	.	.	.	.	.	.	.	.	.	.	.	.	.	.	.
Maitland	.	1.7	1.1	1.3	1.4	0.6	1.3	1.7	1.4	1.5	1.4	1.4	1.5	1.7	0.7	1.1	1.4
Mid-Coast	.	1.2	1.1	1.4	1.5	1.1	0.6	1.0	1.5	2.4	1.2	1.0	0.8	1.9	0.6	0.8	1.4
Mid-Western Regional	5.8	1.3	1.0	1.9	1.1	0.4	.	.	1.0	0.6	0.6	0.6	0.6	1.3	0.3	0.5	1.5
Moree Plains	.	3.9	3.5	2.8	2.2	6.7	.	5.9	6.0	9.7	5.2	4.3	4.7	3.6	2.4	1.3	5.7
Mosman	.	0.5	0.3	0.4	0.6	0.2	.	0.3	0.6	0.5	0.5	0.4	0.3	0.8	0.3	0.6	0.6
Murray River	.	0.3	0.5	0.4	0.3	.	4.3	.	0.6	2.1	0.9	0.9	0.3	0.7	.	0.4	0.8
Murrumbidgee	.	1.8	0.8	1.3	2.8	.	.	.	1.2	1.5	0.6	0.4	0.2	0.7	.	0.4	1.2
Muswellbrook	.	1.5	1.4	2.1	1.3	1.6	.	2.1	3.2	3.6	1.2	0.9	0.9	1.6	0.7	0.5	1.6
Nambucca	7.3	1.5	1.2	1.8	2.1	0.3	.	0.5	2.1	4.8	1.1	1.5	1.3	1.6	0.4	1.0	1.5
Narrabri	.	1.6	1.7	1.5	0.6	0.4	.	.	1.4	1.5	1.4	1.2	0.6	1.4	0.3	0.7	1.5
Narrandera	.	1.6	1.1	0.9	1.3	.	.	3.0	2.5	4.0	1.6	0.9	1.1	0.9	.	0.4	1.8
Narromine	.	2.8	1.8	1.0	2.9	2.4	7.8	1.3	3.7	6.4	1.6	2.1	0.4	3.2	1.3	0.6	2.0
Newcastle	1.8	1.1	1.6	1.4	1.4	1.0	1.6	2.5	1.6	1.8	1.9	1.9	2.6	1.7	1.8	1.7	1.6
North Sydney	.	0.5	0.6	0.5	0.8	0.7	0.7	1.0	0.7	0.8	0.3	0.5	0.8	1.1	1.0	1.1	0.6
Northern Beaches	0.5	0.4	0.5	0.5	0.5	0.5	0.4	0.3	0.4	0.5	0.5	0.7	0.6	0.7	0.5	0.7	0.5
Oberon	.	1.3	0.9	1.5	0.6	.	.	.	1.2	2.3	0.1	0.1	0.2	0.9	.	0.6	1.0
Orange	.	1.7	1.3	2.2	1.8	0.9	.	1.1	2.1	1.5	1.8	1.6	1.5	1.4	0.6	1.0	1.8
Parkes	.	1.4	1.8	1.9	2.7	.	.	0.6	1.0	2.5	0.9	0.9	0.8	2.2	0.1	0.9	2.0
Parramatta	0.6	0.8	0.8	0.7	0.8	1.5	2.0	1.1	1.1	0.7	0.8	1.2	1.2	1.0	1.8	1.2	0.8
Penrith	0.7	1.6	1.1	1.3	1.3	1.6	1.5	1.2	1.3	1.0	1.5	1.3	1.3	1.2	1.1	1.4	1.2
Port Macquarie-Hastings	1.8	0.8	0.9	1.0	0.9	0.9	.	1.0	0.6	1.7	0.8	0.7	0.8	1.2	0.5	0.6	1.0
Port Stephens	.	1.4	0.8	1.1	1.2	0.3	1.5	0.4	0.9	1.2	1.0	0.7	0.9	1.0	0.4	0.9	1.3
Queanbeyan-Palerang Regional	.	0.6	0.6	0.7	0.6	0.3	0.9	0.8	1.2	0.8	1.4	1.3	1.1	1.0	0.3	0.5	1.0
Randwick	1.0	0.6	0.9	0.6	0.7	1.0	1.0	0.8	0.6	0.3	0.7	0.7	0.6	0.8	1.1	1.0	0.6
Richmond Valley	.	1.4	1.5	1.9	1.7	.	2.2	1.1	1.3	2.1	1.2	0.7	0.7	1.2	0.8	0.6	1.4
Ryde	1.2	0.5	0.5	0.5	0.7	0.3	1.7	0.4	0.8	0.6	0.3	0.5	1.2	0.6	0.9	1.1	0.5
Shellharbour	.	0.9	0.6	1.2	0.8	0.5	1.5	1.1	0.7	0.6	1.2	1.0	1.3	0.8	0.3	0.6	0.9
Shoalhaven	1.4	0.9	1.0	1.4	1.4	0.6	1.0	0.5	1.0	1.0	0.9	0.8	1.2	0.9	0.3	0.6	1.0
Singleton	.	1.3	1.0	1.2	1.1	0.7	.	.	1.2	1.8	1.2	0.8	0.8	1.4	0.1	0.8	1.0
Snowy Monaro Regional	.	0.7	0.9	1.4	1.0	.	.	.	0.6	0.7	0.5	0.6	0.3	0.5	0.1	0.4	1.0
Snowy Valleys	.	1.2	1.0	1.8	1.5	0.4	.	.	2.3	2.4	1.5	1.7	0.7	1.4	0.4	0.5	1.6
Strathfield	.	1.0	0.9	0.5	0.8	0.9	2.4	1.5	1.0	0.4	0.8	1.0	0.5	0.6	2.3	1.5	0.7
Sutherland Shire	.	0.6	0.6	0.5	0.5	0.3	.	0.2	0.5	0.4	0.5	0.7	0.8	0.6	0.4	0.6	0.7
Sydney	1.9	1.2	3.5	1.4	2.4	4.1	1.6	2.7	0.9	1.8	1.0	1.0	4.1	1.9	9.1	3.2	1.5
Tamworth Regional	2.3	1.5	1.6	1.6	1.3	0.8	0.8	1.2	2.8	1.6	0.9	2.2	1.4	1.6	0.7	0.8	1.9
Temora	.	0.8	0.9	0.2	0.5	0.9	.	.	0.7	0.5	0.6	0.6	0.3	1.0	.	0.4	1.0
Tenterfield	.	1.5	1.2	0.2	1.1	.	.	1.3	0.9	0.8	0.7	0.6	0.6	2.1	0.3	0.6	1.4
The Hills Shire	0.9	0.3	0.3	0.5	0.5	0.3	.	0.2	0.6	0.3	0.4	0.6	0.6	0.6	0.3	0.8	0.4
Tweed	.	0.9	0.6	0.9	0.8	0.3	1.7	0.4	0.7	0.9	1.1	0.9	0.6	0.9	0.6	0.7	0.8
Unincorporated Far West	.	.	.	.	.	.	.	.	.	.	.	.	.	.	.	.	.
Upper Hunter Shire	.	0.7	0.5	1.4	1.0	.	.	.	1.0	2.7	0.7	0.6	0.1	1.2	.	0.4	0.8
Upper Lachlan Shire	.	0.3	0.3	0.8	0.9	.	.	.	0.5	0.8	0.2	0.4	0.0	0.9	.	0.4	0.5
Uralla	.	1.3	0.3	1.5	2.4	.	.	.	0.5	1.0	0.4	0.2	.	1.0	.	0.4	0.7
Wagga Wagga	.	1.7	1.5	1.8	1.4	0.7	.	1.8	3.2	1.8	1.6	1.6	1.6	1.8	1.0	0.7	2.0
Walcha	45.6	0.6	1.2	4.2	3.2	.	.	.	0.5	0.2	0.4	0.4	0.3	0.4	0.6	0.2	0.7
Walgett	22.5	6.6	3.5	2.7	2.7	.	.	.	4.3	4.0	1.6	1.6	1.2	2.9	0.3	0.7	3.9
Warren	.	.	.	.	.	.	.	.	.	.	.	.	.	.	.	.	.
Warrumbungle Shire	.	1.5	1.0	1.9	1.9	.	.	.	1.2	1.3	0.8	0.4	0.5	1.5	0.4	0.7	1.3
Waverley	.	0.6	1.1	0.8	0.7	0.9	1.4	0.2	0.5	0.2	0.9	0.5	2.4	1.0	1.2	1.2	0.8
Weddin	.	0.5	0.6	0.4	0.3	.	.	.	0.4	0.8	0.3	0.4	0.2	0.8	0.5	0.5	0.8
Wentworth	20.7	3.3	1.9	1.1	1.0	2.3	.	.	2.0	2.7	1.8	1.3	0.2	1.6	0.5	0.2	2.2
Willoughby	1.8	0.4	0.5	0.4	0.7	0.6	0.7	0.7	0.6	0.8	0.4	0.5	2.5	0.6	1.1	1.1	0.6
Wingecarribee	.	0.4	0.5	0.9	0.7	0.1	.	.	0.3	0.7	0.4	0.4	0.5	0.4	0.1	0.6	1.0
Wollondilly	.	1.0	0.4	0.8	0.5	0.1	1.0	0.5	0.5	0.5	0.5	0.4	0.2	0.4	0.1	0.4	0.6
Wollongong	1.4	0.8	1.0	1.0	0.8	1.1	2.0	1.5	1.0	1.0	1.2	1.3	1.2	1.1	0.6	0.7	1.1
Woollahra	.	0.4	0.5	0.8	0.5	0.1	.	.	0.6	0.2	0.5	0.4	0.4	1.0	1.1	0.9	0.6
Yass Valley	.	0.5	0.5	0.6	0.6	.	.	.	0.6	0.9	0.5	0.3	0.2	0.6	.	0.4	0.5
NSW	1.0	1.0	1.0	1.0	1.0	1.0	1.0	1.0	1.0	1.0	1.0	1.0	1.0	1.0	1.0	1.0	1.0

\* For further explanation of rate calculation populations and the ratio to NSW rate, see page 42, Footnote 2 and Note [8]. A result of '.' indicates either that there were no relevant offences recorded in the LGA, or that the population is less than 3,000 people and no rate was calculated.

Sydney LGA can be considered a special case since the population used to calculate the rate is much lower than the population using the area for work and entertainment and this will be reflected in higher incident rates.

\* The ratios given on the offence of murder are calculated for the number of victims, not incidents, and must be treated with caution since for LGAs with relatively small populations a single murder victim will result in relatively high ratio to state.

**TABLE 3.3C: NUMBER OF RECORDED CRIMINAL INCIDENTS FOR MAJOR OFFENCES, OVER THE 12 MONTHS TO JUNE 2018, NSW LGAs**

NSW LGA	Murder *	Domestic violence related assault	Non-domestic violence related assault	Sexual assault	Indecent assault, act of indecency and other sexual offences	Robbery without a weapon	Robbery with a firearm	Robbery with a weapon not a firearm	Break and enter dwelling	Break and enter non-dwelling	Motor vehicle theft	Steal from motor vehicle	Steal from retail store	Steal from dwelling	Steal from person	Fraud	Malicious damage to property
Albury	1	291	328	48	74	9	1	5	332	109	127	566	294	234	22	287	655
Armidale Regional	0	196	183	31	36	6	0	7	309	74	81	316	171	159	17	192	456
Ballina	1	106	180	24	36	4	0	4	115	98	71	282	91	126	14	217	315
Balranald	0	4	8	1	1	0	0	0	11	7	4	6	0	5	0	5	28
Bathurst Regional	0	241	228	51	65	4	0	5	242	48	71	294	121	126	30	273	492
Bayside	2	551	498	73	85	28	3	16	342	111	208	641	443	270	85	1,015	943
Bega Valley	2	103	109	30	42	1	0	1	66	51	29	95	49	75	8	95	247
Bellingen	0	39	33	10	9	0	0	1	31	28	22	35	2	25	5	44	78
Berrigan	0	15	12	9	7	0	0	0	14	16	7	25	8	19	0	19	37
Blacktown	6	2,040	1,689	290	377	128	10	69	1,595	383	827	2,892	1,279	952	272	3,500	3,290
Bland	0	23	10	4	3	0	0	0	14	10	14	22	5	8	0	21	30
Blayney	0	40	24	5	13	0	0	0	24	13	11	33	3	9	2	14	45
Blue Mountains	0	224	224	82	69	6	1	4	173	59	55	222	92	136	17	310	690
Bogan	0	28	25	1	3	0	0	0	9	10	10	21	9	9	1	15	34
Bourke	0	94	49	16	14	0	0	0	76	14	13	57	55	40	1	24	118
Brewarrina	0	40	25	7	4	0	0	0	31	17	2	20	6	10	1	4	42
Broken Hill	0	201	156	11	31	4	0	3	186	49	29	139	39	106	5	51	327
Burwood	1	70	113	14	30	22	1	9	100	35	41	133	268	78	43	411	173
Byron	1	100	262	39	62	4	0	1	102	62	59	200	100	109	48	173	329
Cabonne	0	30	16	16	10	0	0	0	29	25	19	27	4	21	0	28	44
Camden	0	340	185	37	72	2	1	8	148	47	95	245	133	106	7	357	443
Campbelltown	1	841	653	165	200	45	5	37	579	163	261	857	821	398	71	890	1,457
Canada Bay	0	110	113	27	42	9	1	8	259	68	107	299	95	145	25	585	333
Canterbury-Bankstown	5	1,109	1,070	180	194	86	13	43	752	248	620	1,499	590	507	93	2,206	1,844
Carrathool	0	7	10	2	7	0	0	0	7	6	5	11	2	10	0	9	32
Central Coast	2	1,693	1,481	290	416	50	6	37	1,017	398	682	1,559	848	767	157	2,226	2,977
Central Darling	0	82	26	4	7	0	0	0	28	20	6	20	1	9	1	4	51
Cessnock	0	346	222	94	82	5	1	8	346	174	294	398	146	256	18	309	659
Clarence Valley	0	236	251	40	58	1	0	1	189	143	105	228	111	239	19	359	465
Cobar	0	28	46	6	17	0	0	1	23	12	17	42	1	7	1	15	98
Coffs Harbour	0	503	534	126	143	23	2	18	485	216	186	442	227	275	44	522	755
Coolamon	1	10	10	4	2	0	0	0	8	16	10	6	2	6	0	6	13
Coonamble	0	55	43	9	6	2	0	0	68	54	12	54	23	26	3	30	117
Cootamundra-Gundagai	0	58	38	8	12	0	0	1	48	11	19	31	22	42	2	87	125
Cowra	0	62	73	9	18	3	0	1	106	45	18	39	35	50	4	69	146
Cumberland	2	862	802	114	144	87	8	28	764	203	414	1,309	377	414	112	1,910	1,144
Dubbo Regional	0	413	416	80	126	6	0	6	644	199	210	668	285	259	35	359	1,056
Dungog	0	30	18	8	11	0	0	0	22	12	8	9	1	20	0	23	50
Edward River	0	44	32	16	11	0	0	1	29	17	6	36	21	21	1	27	98
Eurobodalla	0	166	211	36	41	3	0	3	186	84	64	192	87	114	3	128	391
Fairfield	0	714	624	108	138	70	5	46	462	146	338	804	359	254	85	1,279	1,100
Federation	1	27	38	6	12	0	0	1	34	31	13	41	7	50	1	43	97
Forbes	1	54	75	7	9	0	0	0	58	61	16	63	29	55	2	46	129
Georges River	1	375	359	46	75	27	2	9	238	94	157	415	319	188	62	887	718
Gilgandra	0	30	20	7	9	1	0	1	44	28	10	29	7	27	1	15	38
Glen Innes Severn	0	68	70	15	10	2	0	1	41	29	16	15	21	45	1	34	116
Goulburn Mulwaree	0	128	129	47	51	1	0	2	69	34	33	121	160	91	3	175	250
Greater Hume Shire	0	21	12	10	10	1	0	0	36	16	19	32	4	21	2	29	48
Griffith	0	203	141	23	18	6	0	5	144	80	55	307	105	97	5	93	366
Gunnedah	0	64	84	16	16	1	0	0	58	18	47	62	43	71	1	69	181
Gwydir	0	19	14	6	6	0	0	0	8	4	11	13	2	18	1	11	29
Hawkesbury	0	269	192	71	82	6	0	4	173	62	112	222	168	108	19	288	392
Hay	0	13	19	3	9	0	0	0	10	9	6	17	2	8	0	12	94
Hilltops	0	109	106	19	33	3	0	1	48	33	39	76	35	73	1	58	220
Hornsby	0	141	193	56	91	10	1	1	218	75	87	378	300	134	48	636	575
Hunters Hill	0	20	32	7	14	0	1	0	40	15	16	43	10	29	2	52	75
Inner West	1	387	656	106	161	38	6	23	480	162	244	767	359	431	106	1,449	1,254
Inverell	0	108	100	22	34	3	0	1	164	57	37	125	80	106	3	50	276
Junee	0	13	17	5	4	0	0	0	25	13	7	30	4	15	0	3	54
Kempsey	0	223	193	40	40	14	2	6	320	86	91	163	138	196	23	126	332
Kiama	0	32	26	8	12	0	0	2	50	37	30	105	8	34	3	58	96
Ku-ring-gai	0	71	95	30	48	6	0	1	316	51	32	238	45	152	19	479	305
Kyogle	0	51	38	9	18	1	0	0	31	20	12	8	7	16	1	14	84
Lachlan	0	46	42	7	17	0	1	0	22	37	16	23	6	28	0	13	111
Lake Macquarie	0	744	696	202	250	22	3	20	611	327	531	1,109	713	470	75	1,430	1,892

**TABLE 3.3C: NUMBER OF RECORDED CRIMINAL INCIDENTS FOR MAJOR OFFENCES, OVER THE 12 MONTHS TO JUNE 2018, NSW LGAs**

NSW LGA	Murder *	Domestic violence related assault	Non-domestic violence related assault	Sexual assault	Indecent assault, act of indecency and other sexual offences	Robbery without a weapon	Robbery with a firearm	Robbery with a weapon not a firearm	Break and enter dwelling	Break and enter non-dwelling	Motor vehicle theft	Steal from motor vehicle	Steal from retail store	Steal from dwelling	Steal from person	Fraud	Malicious damage to property
Lane Cove	0	36	46	15	18	1	0	1	112	50	24	105	30	63	4	171	130
Leeton	1	78	58	21	21	0	0	3	87	41	23	95	27	42	2	46	100
Lismore	0	190	274	63	66	9	0	8	204	82	119	233	126	155	19	169	490
Lithgow	0	85	123	20	24	1	0	1	78	34	31	68	33	72	8	148	202
Liverpool	1	883	715	139	201	58	8	35	763	199	412	1,111	697	409	114	1,525	1,326
Liverpool Plains	0	38	40	2	12	0	0	0	22	18	8	10	7	33	0	20	111
Lockhart	0	10	9	3	2	0	0	0	8	3	3	8	1	4	0	5	19
Lord Howe Island	0	0	1	1	0	0	0	0	0	0	0	0	0	1	0	1	1
Maitland	0	486	369	76	111	9	2	15	397	161	190	539	374	341	33	537	835
Mid-Coast	0	417	431	96	141	19	1	10	490	300	180	460	241	448	31	480	981
Mid-Western Regional	1	122	99	35	27	2	0	0	83	19	26	79	43	78	4	74	290
Moree Plains	0	196	196	29	30	17	0	9	287	177	117	289	201	122	19	113	597
Mosman	0	51	38	10	17	1	0	1	60	21	23	63	30	58	6	108	140
Murray River	0	14	27	4	3	0	1	0	27	33	17	54	13	21	0	30	71
Murrumbidgee	0	26	13	4	11	0	0	0	16	8	4	8	2	7	0	9	37
Muswellbrook	0	89	97	26	22	5	0	4	184	79	33	77	45	65	7	55	203
Nambucca	1	106	98	27	40	1	0	1	144	126	36	146	82	77	5	120	229
Narrabri	0	81	92	15	8	1	0	0	66	27	32	78	24	47	2	62	160
Narrandera	0	35	28	4	8	0	0	2	52	32	16	28	20	14	0	16	83
Narromine	0	69	49	5	19	3	1	1	86	57	18	67	8	52	5	25	103
Newcastle	2	654	1,047	175	227	31	5	45	921	384	500	2,057	877	728	158	1,686	2,054
North Sydney	0	129	172	28	55	9	1	8	169	79	40	174	188	201	42	517	336
Northern Beaches	1	384	586	105	121	25	2	8	419	178	228	885	525	460	83	1,194	1,099
Oberon	0	25	19	6	3	0	0	0	22	17	1	4	4	12	0	20	43
Orange	0	255	226	69	75	7	0	5	303	86	123	336	192	143	15	267	588
Parkes	0	80	113	22	40	0	0	1	50	50	23	68	36	81	1	85	227
Parramatta	1	702	784	130	194	64	9	30	941	214	321	1,356	870	589	236	1,855	1,378
Penrith	1	1,171	945	205	269	62	6	28	900	274	520	1,277	840	616	126	1,873	1,845
Port Macquarie-Hastings	1	239	288	63	74	14	0	9	179	178	112	279	195	247	23	329	621
Port Stephens	0	358	249	57	82	4	2	3	217	113	118	259	198	186	16	409	697
Queanbeyan-Palerang Regional	0	134	153	32	33	3	1	5	236	61	137	377	203	145	9	192	446
Randwick	1	328	567	64	100	28	3	13	318	70	177	499	285	303	92	986	679
Richmond Valley	0	122	145	34	39	0	1	3	109	66	47	75	49	72	10	93	247
Ryde	1	228	228	50	83	7	4	6	351	98	66	327	453	185	60	846	511
Shellharbour	0	224	165	66	58	7	2	9	169	58	140	354	290	135	14	262	506
Shoalhaven	1	348	404	109	140	11	2	6	372	135	146	418	398	220	20	416	817
Singleton	0	113	95	22	26	3	0	0	101	56	49	91	58	82	2	120	182
Snowy Monaro Regional	0	53	77	22	21	0	0	0	40	19	16	66	17	28	1	52	164
Snowy Valleys	0	66	62	20	22	1	0	0	118	48	36	125	32	52	3	47	182
Strathfield	0	156	158	17	32	7	2	7	152	21	53	212	71	65	56	420	234
Sutherland Shire	0	479	594	82	112	11	0	4	375	117	202	738	570	314	49	888	1,187
Sydney	3	1,004	3,269	245	536	172	7	68	739	551	368	1,164	2,856	1,091	1,164	4,553	2,635
Tamworth Regional	1	342	397	74	81	9	1	8	606	130	91	654	267	248	26	315	873
Temora	0	19	24	1	3	1	0	0	16	4	6	19	5	16	0	15	46
Tenterfield	0	36	32	1	7	0	0	1	22	7	8	19	12	35	1	24	73
The Hills Shire	1	209	223	56	75	10	0	3	345	74	112	504	293	234	32	860	441
Tweed	0	296	246	64	77	5	3	4	241	115	176	437	171	206	33	436	602
Unincorporated Far West	0	1	3	0	1	0	0	1	1	0	1	1	5	0	0	0	2
Upper Hunter Shire	0	36	31	15	14	0	0	0	50	53	18	42	6	42	0	40	87
Upper Lachlan Shire	0	8	9	5	7	0	0	0	13	8	2	14	1	17	0	18	29
Uralla	0	29	8	7	15	0	0	0	10	8	4	6	0	15	0	16	31
Wagga Wagga	0	396	385	87	91	8	0	13	712	155	166	494	325	292	38	306	973
Walcha	1	7	16	10	10	0	0	0	5	1	2	7	3	3	1	5	18
Walgett	1	156	92	13	17	0	0	0	96	34	17	50	25	46	1	29	189
Warren	0	31	20	6	5	0	0	0	18	10	7	13	7	10	2	7	77
Warrumbungle Shire	0	52	38	14	18	0	0	0	39	16	13	20	16	35	2	41	94
Waverley	0	150	321	44	53	12	2	2	115	21	111	195	551	183	51	571	461
Weddin	0	7	9	1	1	0	0	0	5	4	2	7	2	7	1	11	24
Wentworth	1	85	55	6	7	3	0	0	48	25	21	43	5	28	2	9	119
Willoughby	1	107	158	22	52	9	1	6	165	79	54	207	610	118	49	539	334
Wingecarribee	0	81	105	34	35	1	0	0	58	46	33	86	78	53	2	174	360
Wollondilly	0	189	80	31	23	1	1	3	84	32	45	97	26	53	2	124	241
Wollongong	2	644	850	164	176	42	8	36	756	295	411	1,408	830	573	70	920	1,738
Woollahra	0	94	119	34	28	1	0	0	113	18	51	128	82	149	35	345	263
Yass Valley	0	32	34	7	10	0	0	0	36	20	13	22	12	23	0	41	65
In Custody	1	5	1,196	56	39	2	0	0	0	2	0	1	0	0	0	13	87
<b>NSW</b>	<b>54</b>	<b>28,637</b>	<b>31,977</b>	<b>5,863</b>	<b>7,715</b>	<b>1,447</b>	<b>150</b>	<b>876</b>	<b>27,130</b>	<b>10,377</b>	<b>12,913</b>	<b>38,309</b>	<b>24,341</b>	<b>19,355</b>	<b>4,418</b>	<b>49,851</b>	<b>59,472</b>

\* For murder the count given is for the number of victims, not incidents.

**TABLE 3.3D: NUMBER OF RECORDED CRIMINAL INCIDENTS FOR MAJOR OFFENCES, OVER THE 12 MONTHS TO JUNE 2017, NSW LGAs**

NSW LGA	Murder *	Domestic violence related assault	Non-domestic violence related assault	Sexual assault	Indecent assault, act of indecency and other sexual offences	Robbery without a weapon	Robbery with a firearm	Robbery with a weapon not a firearm	Break and enter dwelling	Break and enter non-dwelling	Motor vehicle theft	Steal from motor vehicle	Steal from retail store	Steal from dwelling	Steal from person	Fraud	Malicious damage to property
Albury	2	298	308	59	96	9	4	4	378	140	140	580	291	260	17	364	700
Armidale Regional	1	163	199	39	38	9	1	9	280	153	51	355	129	173	18	221	590
Ballina	0	112	174	30	31	5	0	1	118	77	60	213	103	100	15	195	329
Balranald	0	4	14	2	1	0	0	0	2	7	1	7	2	10	0	5	30
Bathurst Regional	0	186	242	44	60	9	2	5	314	95	75	318	164	143	25	277	623
Bayside	1	542	453	55	91	38	2	19	356	107	228	569	349	343	102	1,121	983
Bega Valley	0	102	123	31	35	3	0	1	86	52	27	173	54	69	7	120	270
Bellingen	0	41	38	9	12	0	0	1	23	28	18	31	7	28	0	37	86
Berrigan	0	16	16	1	3	0	0	0	22	20	3	15	6	27	0	19	59
Blacktown	4	2,064	1,642	276	334	160	12	72	1,616	330	844	2,600	1,153	1,006	276	2,910	3,456
Bland	0	19	23	9	12	0	0	0	9	9	7	10	3	5	0	23	31
Blayney	0	14	20	9	8	1	1	0	39	26	16	20	4	20	0	19	59
Blue Mountains	1	279	219	70	68	11	0	1	167	69	63	192	91	134	28	331	512
Bogan	0	24	16	2	7	0	0	0	16	3	15	19	4	14	0	10	31
Bourke	0	85	53	15	10	1	0	2	111	47	25	98	67	32	1	44	163
Brewarrina	0	51	40	12	9	0	0	1	63	37	6	23	8	11	1	19	56
Broken Hill	0	145	140	30	37	2	0	0	206	74	67	193	64	137	7	78	349
Burwood	0	79	136	9	34	16	0	1	139	32	31	158	300	87	30	459	177
Byron	0	108	235	26	39	4	1	1	149	63	73	221	104	135	53	228	325
Cabonne	0	28	22	8	16	0	0	0	37	16	10	18	2	23	0	45	56
Camden	0	261	157	54	82	7	1	0	152	67	92	206	127	142	5	439	416
Campbelltown	1	875	692	153	183	39	6	18	643	207	325	896	844	407	103	1,028	1,590
Canada Bay	1	104	152	26	36	6	1	4	265	79	99	408	68	202	34	592	336
Canterbury-Bankstown	11	1,341	1,057	145	204	76	10	38	806	174	741	1,759	563	540	92	2,414	2,003
Carrathool	0	9	16	2	3	0	0	0	13	7	3	12	0	3	0	4	28
Central Coast	3	1,682	1,442	289	393	42	5	27	1,332	455	735	2,083	886	775	168	2,064	3,342
Central Darling	0	78	46	5	2	0	0	0	71	25	13	34	1	13	1	4	47
Cessnock	0	356	266	59	65	8	4	8	419	184	343	575	159	293	30	322	607
Clarence Valley	0	207	256	47	50	3	1	5	232	97	98	248	128	250	15	227	554
Cobar	0	43	39	6	4	1	0	0	31	22	17	35	13	24	1	20	95
Coffs Harbour	0	484	425	103	134	13	1	7	306	198	135	303	231	235	43	345	759
Coolamon	0	19	11	1	5	0	0	0	13	11	9	3	4	17	0	8	25
Coonamble	0	43	43	2	9	3	0	1	100	39	16	56	16	33	3	15	101
Cootamundra-Gundagai	0	49	45	14	9	0	0	0	34	14	10	42	9	35	0	118	99
Cowra	0	56	90	21	25	2	1	1	137	35	19	83	21	60	3	60	184
Cumberland	4	829	754	137	171	71	11	39	848	232	383	1,094	424	423	130	1,770	1,248
Dubbo Regional	0	394	400	73	75	7	3	11	836	198	235	741	404	301	49	363	998
Dungog	0	25	30	2	6	0	0	0	16	15	10	14	1	20	1	22	57
Edward River	0	45	37	13	18	0	0	0	36	21	12	43	20	49	3	29	102
Eurobodalla	0	144	195	26	45	4	1	0	164	65	66	174	127	94	7	148	341
Fairfield	3	687	678	97	130	59	8	45	465	136	383	995	371	285	104	1,387	1,061
Federation	0	28	32	9	11	0	0	1	32	24	15	38	18	49	2	34	74
Forbes	1	64	71	6	14	0	0	0	64	44	14	62	14	51	1	43	161
Georges River	0	454	348	42	75	23	3	8	247	68	127	363	337	189	58	832	790
Gilgandra	0	44	20	7	7	0	0	0	26	6	3	19	4	22	2	16	41
Glen Innes Severn	0	97	82	21	16	2	0	2	104	55	30	86	11	57	1	45	161
Goulburn Mulwaree	0	106	115	31	47	2	0	0	72	48	24	156	88	76	1	163	219
Greater Hume Shire	0	23	16	9	10	1	0	0	19	22	13	24	5	23	0	29	46
Griffith	0	214	156	19	27	0	0	10	161	68	49	190	132	85	7	91	301
Gunnedah	0	86	88	13	14	0	0	1	65	16	21	35	37	63	1	54	164
Gwydir	0	14	17	1	3	0	0	0	9	10	4	5	3	17	0	10	36
Hawkesbury	0	241	210	45	63	5	2	3	151	110	119	368	159	146	26	310	423
Hay	0	20	31	2	7	0	0	0	19	16	5	13	6	17	1	5	70
Hilltops	0	80	86	45	38	1	0	1	57	38	22	70	40	40	2	76	217
Hornsby	0	166	257	56	72	10	0	2	338	114	88	349	330	186	33	635	650
Hunters Hill	0	22	22	4	6	1	0	1	47	12	22	51	4	27	3	51	63
Inner West	0	421	594	107	132	43	4	23	543	165	280	882	396	562	103	1,435	1,398
Inverell	1	82	121	21	43	1	0	0	135	51	21	64	53	82	5	61	220
Junee	0	19	28	7	5	0	0	0	17	17	7	8	4	26	0	9	56
Kempsey	0	222	197	36	41	5	1	7	238	136	94	197	143	167	16	123	474
Kiama	0	29	39	5	16	2	0	1	35	30	34	121	10	37	6	52	88
Ku-ring-gai	0	71	80	42	50	3	0	0	356	94	51	184	48	149	22	434	364
Kyogle	0	43	33	12	12	0	0	0	36	28	13	22	8	21	0	19	75
Lachlan	0	66	48	11	12	0	0	0	46	24	19	42	10	50	1	21	85
Lake Macquarie	2	812	605	176	204	24	3	15	776	290	549	1,227	768	573	69	1,201	1,900



**TABLE 3.3D: NUMBER OF RECORDED CRIMINAL INCIDENTS FOR MAJOR OFFENCES, OVER THE 12 MONTHS TO JUNE 2017, NSW LGAs**

NSW LGA	Murder *	Domestic violence related assault	Non-domestic violence related assault	Sexual assault	Indecent assault, act of indecency and other sexual offences	Robbery without a weapon	Robbery with a firearm	Robbery with a weapon not a firearm	Break and enter dwelling	Break and enter non-dwelling	Motor vehicle theft	Steal from motor vehicle	Steal from retail store	Steal from dwelling	Steal from person	Fraud	Malicious damage to property
Lane Cove	0	36	49	15	11	1	0	0	92	33	27	106	17	49	7	150	94
Leeton	0	56	72	13	14	2	0	1	80	34	29	37	29	36	2	35	118
Lismore	2	156	296	69	73	9	1	7	190	65	91	254	135	147	29	211	455
Lithgow	2	95	121	24	19	2	0	4	133	70	46	92	38	90	11	117	315
Liverpool	3	942	736	142	201	50	3	23	740	190	407	1,351	800	527	104	1,820	1,373
Liverpool Plains	0	48	34	6	12	0	0	0	32	42	20	28	12	34	0	27	92
Lockhart	0	13	7	0	0	0	0	0	11	10	2	5	1	7	0	5	19
Lord Howe Island	0	3	4	0	4	0	0	0	0	2	0	0	0	0	0	1	3
Maitland	1	435	311	72	87	10	4	9	369	121	237	827	289	412	30	409	892
Mid-Coast	1	416	415	117	126	12	0	9	547	396	163	320	193	358	30	364	987
Mid-Western Regional	0	114	121	28	40	0	0	0	97	36	31	133	44	96	5	91	242
Moree Plains	0	249	168	40	23	12	3	8	424	171	109	224	158	162	12	109	635
Mosman	0	47	35	9	24	2	0	2	61	16	17	97	19	66	0	108	134
Murray River	1	30	26	4	1	2	0	1	38	38	18	40	23	33	3	36	70
Murrumbidgee	0	25	15	2	4	0	0	0	6	17	8	9	0	15	0	8	29
Muswellbrook	0	97	97	14	20	0	1	1	137	54	59	113	76	70	5	63	253
Nambucca	0	102	122	31	48	1	0	4	89	63	52	121	56	70	9	101	271
Narrabri	1	95	69	15	11	0	0	1	81	39	43	80	31	81	1	56	198
Narrandera	0	30	38	8	10	0	1	0	80	76	24	66	31	29	1	11	76
Narromine	0	50	51	12	16	2	0	0	73	49	27	59	19	53	11	29	111
Newcastle	0	690	1,122	159	249	44	8	36	950	357	491	2,165	764	757	171	1,593	2,283
North Sydney	0	139	180	28	39	15	0	5	157	73	46	198	129	206	36	487	312
Northern Beaches	3	338	649	97	125	23	0	4	420	206	211	826	523	416	94	1,121	1,171
Oberon	1	19	22	5	4	0	0	0	14	11	9	12	6	12	1	13	44
Orange	0	261	250	57	85	7	2	13	375	119	137	337	337	176	22	264	624
Parkes	1	132	108	23	27	0	0	0	64	39	21	80	44	58	1	48	256
Parramatta	1	674	827	120	171	51	15	30	907	254	291	1,191	785	605	218	1,999	1,461
Penrith	1	1,069	965	180	243	58	2	47	743	268	519	1,294	823	548	148	1,666	2,016
Port Macquarie-Hastings	0	273	284	61	66	3	1	7	181	111	116	273	183	212	26	326	586
Port Stephens	0	334	283	74	75	2	1	4	268	114	141	343	152	200	12	346	754
Queanbeyan-Palerang Regional	1	141	189	29	32	4	0	0	158	75	116	364	117	131	10	193	541
Randwick	1	377	487	72	94	28	0	19	394	102	174	459	261	415	86	1,031	774
Richmond Valley	0	164	133	33	38	3	0	2	135	53	47	129	61	76	4	110	274
Ryde	1	202	253	47	67	8	2	3	309	73	93	367	410	208	35	764	547
Shellharbour	0	220	216	63	82	9	2	8	231	108	137	422	218	157	18	274	483
Shoalhaven	0	367	416	108	115	6	0	13	408	149	152	459	233	222	13	365	882
Singleton	0	85	85	25	27	4	0	2	89	84	70	94	58	78	9	88	167
Snowy Monaro Regional	0	58	70	24	14	0	0	0	46	14	6	41	18	22	3	63	152
Snowy Valleys	0	84	65	12	20	0	0	1	82	35	20	134	32	87	7	38	208
Strathfield	0	92	158	16	30	6	0	4	218	59	83	262	74	145	48	477	235
Sutherland Shire	1	470	574	102	136	15	1	12	302	116	197	597	538	315	76	844	1,338
Sydney	3	997	3,184	237	376	181	9	72	724	575	352	1,362	2,954	1,042	1,284	4,681	2,557
Tamworth Regional	1	355	397	66	91	11	0	9	538	145	142	474	240	310	24	334	879
Temora	0	22	33	6	4	0	0	0	30	13	10	28	11	19	0	20	56
Tenterfield	0	40	42	5	8	0	0	1	53	21	14	30	13	45	1	35	77
The Hills Shire	1	206	258	51	55	9	0	3	427	118	123	485	294	226	40	764	530
Tweed	4	315	287	51	80	9	0	6	225	116	147	375	160	196	28	448	562
Unincorporated Far West	0	3	0	3	1	0	0	0	1	3	1	5	4	1	0	1	2
Upper Hunter Shire	0	28	44	10	16	0	0	0	42	35	32	41	18	40	2	37	115
Upper Lachlan Shire	0	7	12	3	4	0	0	0	12	5	3	6	0	16	0	13	26
Uralla	0	18	13	8	9	0	0	1	9	3	7	7	1	16	0	14	20
Wagga Wagga	2	363	371	61	57	11	0	4	813	133	186	645	374	364	33	317	926
Walcha	0	11	7	2	6	0	0	0	2	4	1	5	0	8	2	6	10
Walgett	1	130	87	16	8	0	0	0	88	38	18	54	21	51	0	19	228
Warren	0	31	31	27	14	0	0	0	27	9	12	27	4	17	1	10	54
Warrumbungle Shire	1	48	43	18	16	0	1	1	44	29	12	49	18	35	2	24	101
Waverley	0	166	359	42	58	10	0	1	194	49	107	238	655	246	56	520	501
Weddin	0	10	9	3	6	0	0	0	4	7	4	4	4	14	0	8	41
Wentworth	0	42	49	14	8	2	0	0	45	36	26	49	7	37	1	22	102
Willoughby	0	73	178	23	55	8	1	2	223	87	44	206	596	112	46	466	280
Wingecarribee	0	138	119	19	43	3	0	0	94	83	40	104	56	136	5	169	348
Wollondilly	0	162	81	29	39	3	1	1	88	57	58	98	20	71	4	198	270
Wollongong	1	695	820	129	150	40	4	20	760	332	393	1,348	896	579	80	831	1,783
Woollahra	0	98	128	26	50	3	0	0	168	41	64	201	90	156	65	285	303
Yass Valley	0	34	31	14	11	0	0	1	29	27	10	35	12	25	1	56	67
In Custody	2	6	1,143	58	25	4	0	1	0	3	2	2	0	0	0	11	115
<b>NSW</b>	<b>74</b>	<b>28,741</b>	<b>32,089</b>	<b>5,615</b>	<b>7,188</b>	<b>1,417</b>	<b>152</b>	<b>800</b>	<b>29,014</b>	<b>11,063</b>	<b>13,423</b>	<b>40,080</b>	<b>24,136</b>	<b>20,816</b>	<b>4,705</b>	<b>48,803</b>	<b>62,382</b>

\* For murder the count given is for the number of victims, not incidents.



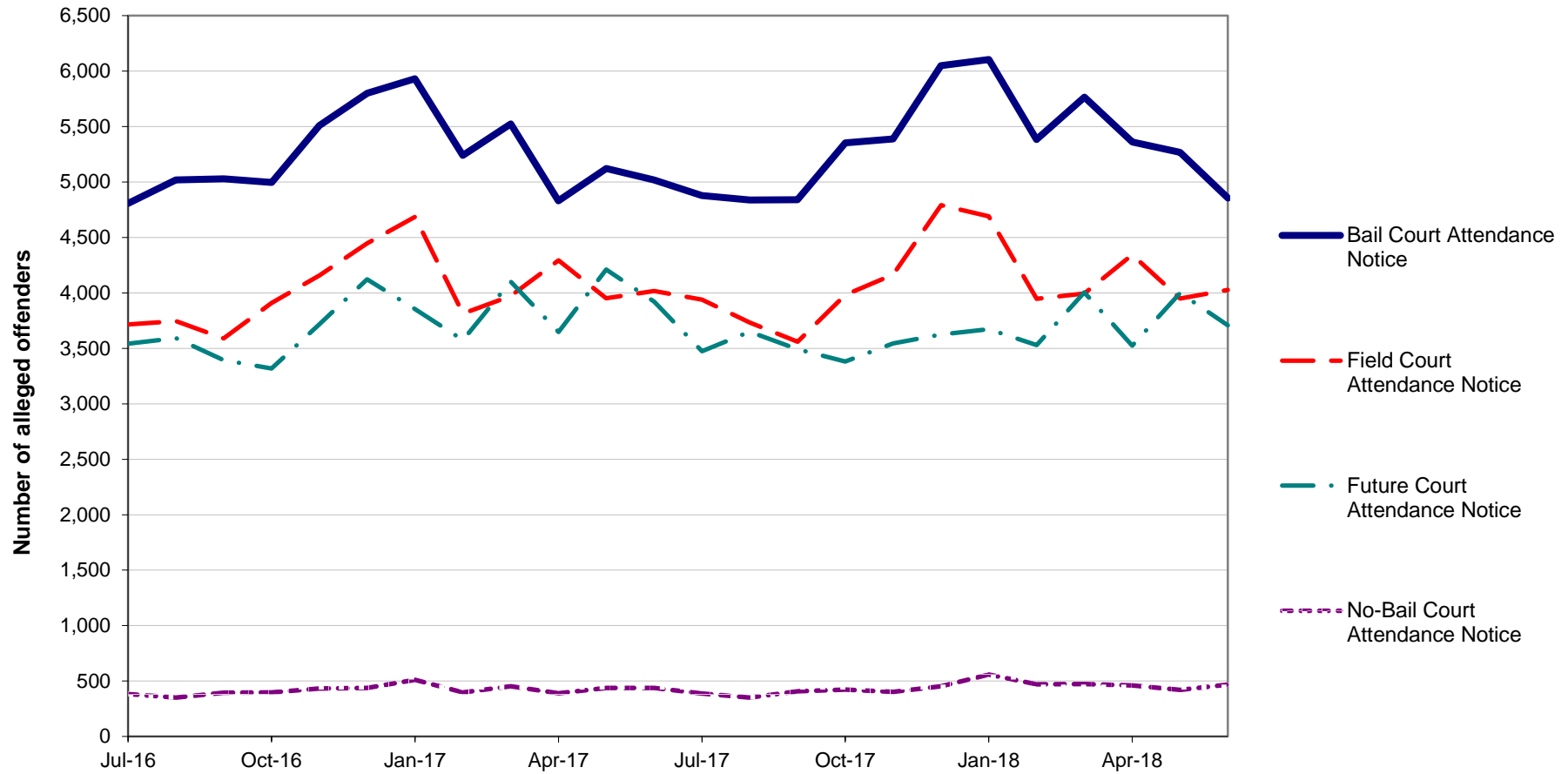
---

**SECTION 4:**

**METHODS OF PROCEEDINGS  
AGAINST ALLEGED OFFENDERS**

---

**Figure 4.1: TRENDS IN REFERRAL METHODS FOR ALLEGED OFFENDERS PROCEEDED AGAINST TO COURT, OVER THE 24 MONTHS TO JUNE 2018\*, NSW**



**Trends:**

Bail Court Attendance Notice shows no statistically significant trend for the 24 month period.

Field Court Attendance Notice shows no statistically significant trend for the 24 month period.

Future Court Attendance Notice shows no statistically significant trend for the 24 month period.

No-Bail Court Attendance Notice shows a statistically significant upward trend for the 24 month period (up by 5.1%).

\* The date alleged offenders were proceeded against, rather than the date the incident was recorded.

**TABLE 4.1: NUMBER, PERCENTAGE AND TREND<sup>^</sup> IN ALLEGED OFFENDERS PROCEEDED AGAINST BY NSW POLICE BY METHOD OF LEGAL PROCEEDINGS OVER THE 24 MONTHS TO JUNE 2018\*, NSW**

Type of process	Number of alleged offenders with proceedings commenced		Trend <sup>^</sup> over the 24 months to June 2018	
	over the 12 months to June 2017	over the 12 months to June 2018	Change	Annual percentage change
<b>Proceeded against to court:</b>				
Bail Court Attendance Notice	62,829	64,090	1,261	Stable
No-Bail Court Attendance Notice	5,021	5,276	255	5.1%
Future Court Attendance Notice	44,998	43,608	-1,390	Stable
Field Court Attendance Notice	48,300	49,124	824	Stable
<b>All proceedings to court</b>	<b>161,148</b>	<b>162,098</b>	<b>950</b>	Stable
<b>Proceeded against other than to court:</b>				
Youth Justice Conference	550	791	241	43.8%
Caution Young Offenders Act	6,962	7,434	472	6.8%
Cannabis Caution	5,398	5,286	-112	Stable
Criminal Infringement Notice	9,433	9,258	-175	Stable
Infringement Notice	717,127	711,260	-5,867	Stable
Liquor Offence Compliance Notice	353	364	11	Stable
Warning Young Offenders Act	9,945	10,419	474	Stable
<b>All proceedings other than to court</b>	<b>749,768</b>	<b>744,812</b>	<b>-4,956</b>	Stable
<b>All proceedings</b>	<b>910,916</b>	<b>906,910</b>	<b>-4,006</b>	Stable

<sup>^</sup> For further explanation of **trend results**, see page 42, Notes [5] and [6].

\* The date alleged offenders were proceeded against, rather than the date the incident was recorded.

**TABLE 4.2: NUMBER, PERCENTAGE AND TREND<sup>^</sup> IN ALLEGED OFFENDERS PROCEEDED AGAINST TO COURT BY NSW POLICE FOR MAJOR OFFENCES OVER THE 24 MONTHS TO JUNE 2018\*\*, NSW**

Offence category	Over the 12 months to June 2017			Over the 12 months to June 2018			Trend <sup>^</sup> over the last 24 months	
	Number proceeded against to court	Total number proceeded against	% proceeded against to court	Number proceeded against to court	Total number proceeded against	% proceeded against to court	Change in number proceeded against to court	Annual percentage change
Murder	73	73	100.0%	73	73	100.0%	0	Stable
Domestic violence related assault	12,462	12,807	97.3%	12,321	12,709	96.9%	-141	Stable
Non-domestic violence related assault	7,637	8,733	87.5%	7,588	8,838	85.9%	-49	Stable
Sexual assault	867	867	100.0%	800	800	100.0%	-67	Stable
Indecent assault, act of indecency and other sexual offences	1,422	1,472	96.6%	1,469	1,532	95.9%	47	Stable
Robbery without a weapon	658	666	98.8%	779	788	98.9%	121	18.4%
Robbery with a firearm	112	112	100.0%	128	128	100.0%	16	Stable
Robbery with a weapon not a firearm	505	505	100.0%	587	588	99.8%	82	Stable
Break and enter dwelling	3,265	3,479	93.9%	2,995	3,188	93.9%	-270	Stable
Break and enter non-dwelling	1,710	1,978	86.5%	1,859	2,265	82.1%	149	Stable
Motor vehicle theft	1,464	1,603	91.3%	1,505	1,670	90.1%	41	Stable
Steal from motor vehicle	1,223	1,405	87.1%	1,313	1,578	83.2%	90	Stable
Steal from retail store	5,398	11,009	49.0%	5,507	11,124	49.5%	109	Stable
Steal from dwelling	688	838	82.1%	594	789	75.3%	-94	Stable
Steal from person	395	453	87.2%	408	453	90.1%	13	Stable
Fraud	4,334	4,565	94.9%	4,643	4,908	94.6%	309	Stable
Malicious damage to property	5,548	6,554	84.7%	5,293	6,311	83.9%	-255	Stable

<sup>^</sup> For further explanation of **trend results**, see page 42, Notes [5] and [6].

\*\* The date alleged offenders were proceeded against, rather than the date the incident was recorded.

---

**SECTION 5:**

**CLEARED CRIMINAL INCIDENTS  
AND WHETHER LEGAL PROCEEDINGS  
COMMENCED FOR SELECTED OFFENCES**

---

**TABLE 5.1: NUMBER OF RECORDED CRIMINAL INCIDENTS FOR SELECTED OFFENCES BY WHETHER LEGAL PROCEEDINGS COMMENCED IN 30 DAYS OF REPORTING, OVER THE 24 MONTHS TO MAY 2018, NSW**

Type of offence	Recorded criminal incidents over the 12 months to May 2017				Recorded criminal incidents over the 12 months to May 2018			
	Total number recorded	Cleared within 30 days of reporting			Total number recorded	Cleared within 30 days of reporting		
		Total number cleared <sup>#</sup>	Proceedings commenced within 30 days <sup>###</sup>	% proceedings commenced within 30 days		Total number cleared <sup>#</sup>	Proceedings commenced within 30 days <sup>###</sup>	% proceedings commenced within 30 days
Murder*	68	45	42	61.8	57	36	36	63.2
Domestic violence related assault	28,838	22,723	18,099	62.8	28,496	22,710	17,819	62.5
Non-domestic violence related assault	31,897	13,428	7,635	23.9	32,102	13,498	7,822	24.4
Sexual assault	5,545	1,136	464	8.4	5,874	1,263	468	8.0
Indecent assault, act of indecency and other sexual offences	7,198	2,052	1,147	15.9	7,700	2,232	1,275	16.6
Abduction and kidnapping	230	80	71	30.9	202	111	102	50.5
Robbery without a weapon	1,402	397	357	25.5	1,435	454	401	27.9
Robbery with a firearm	158	38	36	22.8	148	52	49	33.1
Robbery with a weapon not a firearm	789	260	249	31.6	890	317	302	33.9
Intimidation, stalking and harassment	30,162	18,088	11,396	37.8	31,223	18,621	11,798	37.8
Break and enter dwelling	29,156	2,256	1,890	6.5	27,216	2,103	1,745	6.4
Break and enter non-dwelling	11,219	972	861	7.7	10,455	1,024	921	8.8
Motor vehicle theft	13,475	1,031	856	6.4	12,944	1,060	887	6.9
Steal from motor vehicle	40,359	1,252	1,020	2.5	38,607	1,422	1,159	3.0
Steal from retail store	24,124	11,276	9,384	38.9	24,477	11,381	9,757	39.9
Steal from dwelling	20,960	1,595	736	3.5	19,473	1,489	704	3.6
Steal from person	4,722	487	344	7.3	4,464	483	335	7.5
Stock theft	489	25	10	2.0	430	16	4	0.9
Fraud	49,072	3,860	3,104	6.3	49,761	4,308	3,450	6.9
Arson	5,585	451	184	3.3	5,868	474	214	3.6
Malicious damage to property	62,241	14,984	11,258	18.1	59,755	14,793	11,418	19.1

<sup>#</sup> Total number cleared includes both incidents where proceedings were commenced and those where no proceedings were commenced.

<sup>###</sup> This includes incidents where a person was either proceeded against to court or proceeded against other than to court.

\* Victims for whom incident was cleared.



**TABLE 5.2: NUMBER OF RECORDED CRIMINAL INCIDENTS FOR SELECTED OFFENCES BY WHETHER LEGAL PROCEEDINGS COMMENCED IN 90 DAYS OF REPORTING, OVER THE 24 MONTHS TO MARCH 2018, NSW**

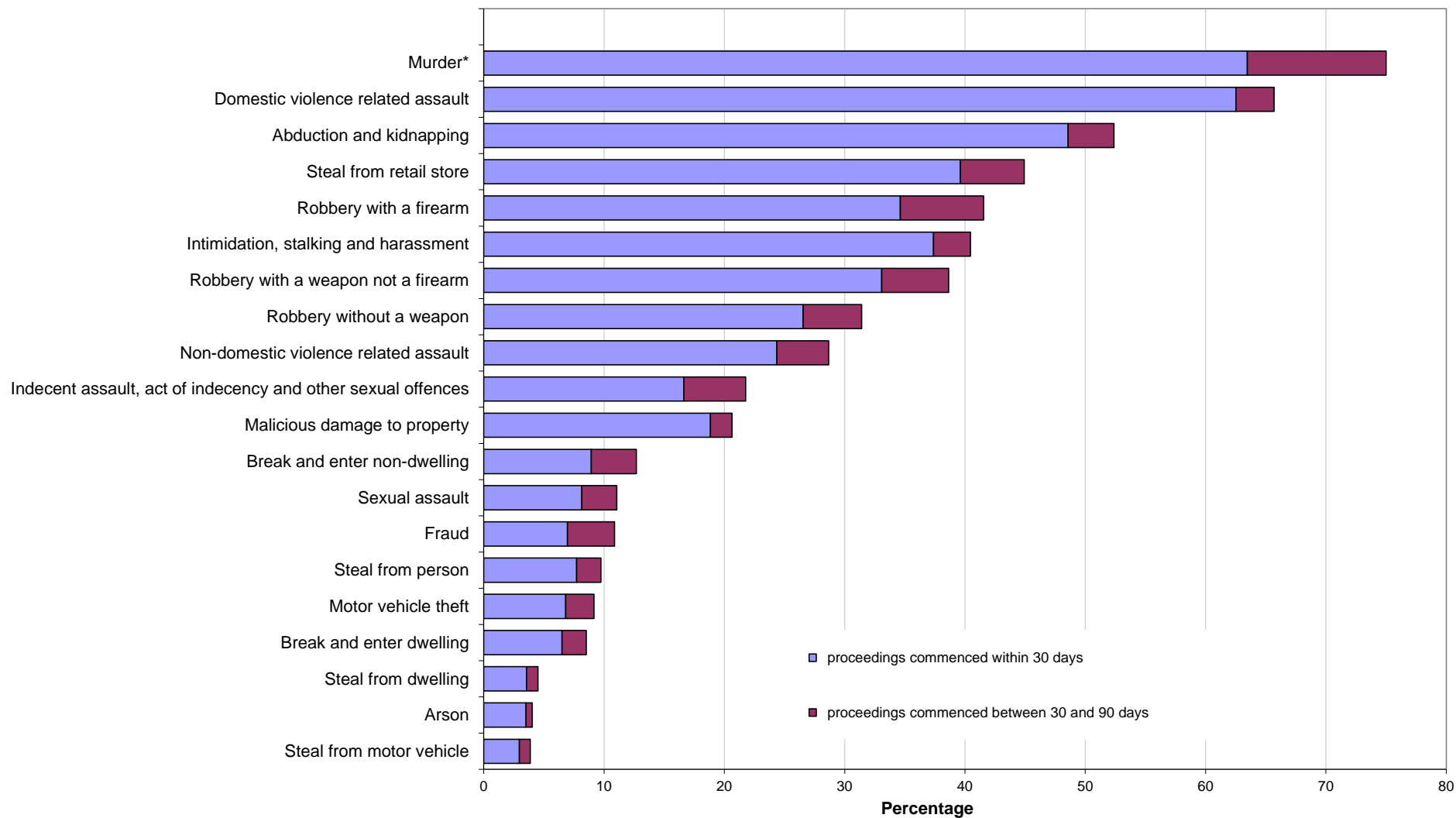
Type of offence	Recorded criminal incidents over the 12 months to March 2017				Recorded criminal incidents over the 12 months to March 2018			
	Total number recorded	Cleared within 90 days of reporting			Total number recorded	Cleared within 90 days of reporting		
		Total number cleared <sup>#</sup>	Proceedings commenced within 90 days <sup>###</sup>	% proceedings commenced within 90 days		Total number cleared <sup>#</sup>	Proceedings commenced within 90 days <sup>###</sup>	% proceedings commenced within 90 days
Murder*	71	47	44	62.0	52	39	39	75.0
Domestic violence related assault	29,044	24,310	19,126	65.9	28,332	23,820	18,613	65.7
Non-domestic violence related assault	31,878	15,412	9,030	28.3	32,303	15,625	9,260	28.7
Sexual assault	5,387	1,576	637	11.8	5,816	1,708	643	11.1
Indecent assault, act of indecency and other sexual offences	7,108	2,692	1,430	20.1	7,612	2,963	1,657	21.8
Abduction and kidnapping	230	104	86	37.4	210	123	110	52.4
Robbery without a weapon	1,399	484	432	30.9	1,465	526	460	31.4
Robbery with a firearm	164	57	53	32.3	130	57	54	41.5
Robbery with a weapon not a firearm	813	336	323	39.7	898	364	347	38.6
Intimidation, stalking and harassment	30,351	19,924	12,376	40.8	31,216	20,213	12,630	40.5
Break and enter dwelling	29,271	2,884	2,358	8.1	27,352	2,830	2,331	8.5
Break and enter non-dwelling	11,480	1,324	1,164	10.1	10,349	1,449	1,312	12.7
Motor vehicle theft	13,164	1,337	1,080	8.2	12,978	1,459	1,188	9.2
Steal from motor vehicle	40,365	1,719	1,408	3.5	39,085	1,852	1,510	3.9
Steal from retail store	23,789	12,511	10,542	44.3	24,599	12,870	11,050	44.9
Steal from dwelling	21,202	1,933	922	4.3	19,342	1,797	872	4.5
Steal from person	4,702	572	406	8.6	4,551	633	443	9.7
Stock theft	484	38	15	3.1	445	24	5	1.1
Fraud	50,347	6,143	4,917	9.8	49,315	6,702	5,358	10.9
Arson	5,683	520	219	3.9	5,909	519	239	4.0
Malicious damage to property	62,310	16,650	12,481	20.0	60,434	16,289	12,470	20.6

<sup>#</sup> Total number cleared includes both incidents where proceedings were commenced and those where no proceedings were commenced.

<sup>###</sup> This includes incidents where a person was either proceeded against to court or proceeded against other than to court.

\* Victims for whom incident was cleared.

**Figure 5.1: PERCENTAGE OF RECORDED CRIMINAL INCIDENTS FOR SELECTED OFFENCES WHERE LEGAL PROCEEDINGS COMMENCED WITHIN 30 AND 90 DAYS, OVER THE 12 MONTHS TO MARCH 2018, NSW**



\* For murder the data are counts of recorded victims, not criminal incidents.

---

# **APPENDICES**

---

## APPENDIX 1: TRENDS IN RECORDED CRIMINAL INCIDENTS FOR NSW

[1] Irrespective of how trends in recorded crime are presented, their interpretation is a difficult task. The recorded criminal incident data presented in this report are based on information derived from the NSW Police Force Computerised Operational Policing System (COPS), so only those incidents which are reported to, or detected by, police are included. The trends in recorded crime shown in this report will, therefore, reflect movements in the underlying factors which influence the detection, reporting and recording of crime, as well as changes in the true level of crime in the community.

[2] An alternative measure of the level of crime in Australia is available from crime victim surveys, for example the national Crime Victimization Survey by the Australian Bureau of Statistics (ABS)<sup>1</sup>. As well as providing an estimate of the victimisation rate at the State level for a selected set of offences, this survey estimates the proportion of crimes which are not reported to police, and are therefore not recorded in the official statistics. In particular, personal crimes, such as assault and robbery, are less likely to be reported than crimes which involve households. These surveys generally find that about half of physical assault victims aged 15 and over report the incident to police whereas break-ins are reported to police approximately three quarters of the time. Given that some offences have low reporting rates, it is possible that changes in recorded crime rates over time for these offences may be reflecting changes in reporting rates.

[3] Public willingness to report crime, however, is just one of the extraneous factors which can affect trends in recorded crime. Shifts in policing policy can also have a marked effect on the number of recorded drug offences, cases of offensive behaviour or of receiving stolen goods. For these offences, therefore, recorded rates probably do not accurately reflect actual rates. For this reason, the more detailed comparisons of crime rates and examination of trends in this document are restricted to offence categories which are more likely to be reported to, rather than detected by police.

[4] The interpretation of trends in official reports of crime can be considerably more difficult than the interpretation of trends in unemployment or inflation statistics. The ease with which recorded crime statistics can be misunderstood creates a temptation to offer an authoritative explanation for each major crime trend. Indeed, in many instances it is simply impossible to state with any assurance why a particular trend has appeared. This report, therefore, confines itself to identifying and describing trends in recorded crime, rather than explaining them.

[5] For each offence category or subcategory (except murder), a statistical test for trend was applied to the monthly numbers of recorded criminal incidents over the relevant period. In the case of murder, the statistical test for trend was applied to the monthly numbers of victims over the period. The trend test used was Kendall's rank-order correlation test (see, for example, Conover, W.J. 1980, *Practical Non-Parametric Statistics*, 2nd ed, John Wiley and Sons, pp 256-260). A two-tailed test was used to determine whether there had been an increasing or decreasing trend in the recorded numbers of criminal incidents over the relevant period covered in the report. Some month to month variations in the numbers of recorded incidents could be due in part to seasonal factors. The test for trend is not sensitive to seasonal variations; it is sensitive only to a generally increasing or generally decreasing trend over the time period examined.

[6] For the trend tests throughout this publication, where a statistically significant trend was found ( $p < .05$ ), the extent of the trend is indicated by the percentage change in the total number of recorded criminal incidents between the latest two consecutive 12-month periods for 24 month tests; and the average annual percentage change between the first 12-month period and the latest 12-month period for longer tests. A trend test was not performed if there were fewer than 20 incidents in any of the years for the period in question. The result ' . ' indicates that a trend test was not performed. A non-significant test result ( $p > .05$ ) is denoted by 'Stable' or by 'ns' in some larger LGA tables.

[7] In order to present an overview of crime trends in NSW the information in Section 1 relates to aggregate violent and property crime. The State graphs for violent and property offences are plotted as monthly rates<sup>2</sup> per 100,000 population. The State graph for violent offences shows distinct seasonality and the 12-month moving average (light grey line) indicates a downward path since 2004, which has stabilized over the past five years, whilst the property offences graph and the 6-month moving average (light grey line) both indicate a strong downward path since about 2000. Violent offences include: murder, attempted murder, manslaughter, assault - domestic violence related, assault - non-domestic violence related, assault police, robbery without a weapon, robbery with a firearm, robbery with a weapon not a firearm, sexual assault and indecent assault / act of indecency / other sexual offences. Property offences include: break and enter dwelling, break and enter non-dwelling, motor vehicle theft, steal from motor vehicle, steal from retail store, steal from dwelling, steal from person, stock theft, other theft and fraud.

[8] The ratio to NSW rate statistics are a comparison of a NSW regional rate per 100,000 population to the NSW rate per 100,000 population<sup>2</sup>. A ratio of one indicates parity with the NSW rate. Ratios indicating double the NSW rate (or more) before rounding are highlighted in red, whilst ratios indicating half the NSW rate (or less) before rounding are highlighted in yellow.

1. Australian Bureau of Statistics *Crime Victimization, Australia, Cat. No. 4530.0, ABS, Sydney. See the Australian Bureau of Statistics website for the latest version available at [www.abs.gov.au](http://www.abs.gov.au)*

2. For the rate calculations, specialised population data were prepared and provided to BOCSAR by the Australian Bureau of Statistics.

## APPENDIX 2: DEFINITIONS AND EXPLANATORY NOTES

The data in this report are extracted from the NSW Police Force's Computerised Operational Policing System (COPS). This system is used for record-keeping for all police operations, not just for criminal matters.

In this report:

- the counting units are recorded *criminal incidents* rather than recorded *offences* (except for murder and manslaughter, where the counting units are victims); and
- the data are categorised by date of *reporting* to police (or date of detection by police) rather than by date of *occurrence* of the offence (except for alleged offender data, where the data is categorised by date the alleged offender was proceeded against).

### RECORDED CRIMINAL INCIDENTS

A criminal incident is defined as an activity detected by or reported to police which:

- involved the same offender(s);
- involved the same victim(s);
- occurred at the one location;
- occurred during one uninterrupted period of time;
- falls into one offence category;
- falls into one incident type (for example, 'actual', 'attempted', 'conspiracy').

One incident may involve two offenders assaulting the same victim. This would be recorded as one assault incident. Alternatively, suppose a man reports to police that he found his neighbour in the process of damaging his car and, when confronted, the neighbour assaulted him. For such an event, two criminal incidents are recorded because two distinct offence types are involved (malicious damage to property and assault) even though the same parties were involved at the same time and in the same place.

### RECORDED VICTIMS

For murder and manslaughter only, the counting units used are victims. Under the definition of a criminal incident (same parties, same time, same place, same offence and same incident type) one murder or manslaughter incident could involve two or more persons being killed. Because of the seriousness of these offences and their relatively small numbers, it is considered to be more appropriate to count the number of victims, rather than the number of criminal incidents. Hence, where one murder incident involves a person killing six people, six murder victims are counted.

### OFFENCE CATEGORIES

The classification of offences in this report is broadly based on the Australian and New Zealand Standard Offence Classification (ANZSOC) devised by the Australian Bureau of Statistics (*ABS 2011, third edition, Cat. No. 1234.0*).

For all types of offence classifications used in the report, Appendix 3 lists the offence categories included in the classification. The original offence incident categories are those used by the NSW Police Force and do not necessarily correspond exactly with offences as defined in legislation.

### MAJOR OFFENCE CATEGORIES

Major offence categories include the most serious personal violence and property offences. The most serious of these offences is *murder* for which the incident count is the number of victims. Assault offences include the two major offence categories of *domestic violence related assault* and *non-domestic violence related assault*. All sexual offences are categorised by the two major offence types, either as *sexual assault* or *indecent assault, act of indecency and other sexual offences*.

Robbery offences are sorted into three categories by use of weapon: *robbery with a firearm*, *robbery with a weapon not a firearm* or *robbery without a weapon*. The serious theft offences in this group start with the burglary categories of *break and enter - dwelling* and *break and enter - non-dwelling* followed by *motor vehicle theft* and *steal from motor vehicle*. Other theft offences included in the 17 major offences are *steal from retail store*, *steal from dwelling*, *steal from person* and *fraud*. The final property offence listed as a major offence is *malicious damage to property*.

## APPENDIX 2: DEFINITIONS AND EXPLANATORY NOTES *continued*

### COUNTING PERIOD

Criminal incidents are included in the counting period in which they were reported to or detected by police.

In most cases criminal incidents are recorded on COPS on the day of reporting. However there may be some time delay before the incident gains the status of accepted and verified (which are necessary conditions for inclusion in this report). It is therefore possible for some updating of data to occur. That is, data extracted for a specified period of time may differ according to the date of extraction of the data.

In recent years some historic murders have been re-entered on the COPS system after being referred to the unsolved homicide squad. Murders that were first reported to NSW Police prior to the introduction of COPS in 1995 but recorded on COPS in recent years are excluded from the statistics. Murders which took place prior to 1995 but were first reported to Police in or after 1995 are included in the statistics.

### PROCEEDINGS AGAINST ALLEGED OFFENDERS

Police may proceed against alleged offenders through a variety of legal or other processes. Alleged offenders who are not legally proceeded against are not included in this report. Most alleged offenders are referred to the NSW Criminal Courts. The more serious offences are dealt with by way of a Bail Court Attendance Notice (CAN) or a No-Bail CAN. In these instances, the alleged offender is arrested, taken to a police station, fingerprinted and the details of the person and all charges are recorded. A Bail CAN is used when a bail determination is required and a No-Bail CAN is used when a bail determination is not required.

Following changes to the Bail Act in May 2014, No-Bail CANs are used almost solely for incidents of 'Breach of bail conditions' and no bail determination is required because the original determination stands until a new determination is made by the court. Alternatively a Field CAN may be issued by police at other locations. A Future CAN is used for less serious offences.

Some alleged offenders are proceeded against but diverted from the criminal court system. For many minor offences police can issue Infringement Notices. By paying the prescribed penalty the offender avoids having to go to court. Under the *Young Offenders Act 1997*, a juvenile offender can be issued with either a warning, a caution or referred to a youth justice conference.

Youth Justice Conference and cautions data in previous reports have included juvenile offenders initially proceeded against to court by Police and then referred to a conference or given a caution under the *Young Offenders Act* by the court. From the 2015 report, they are now counted as being proceeded against to court by Court Attendance Notice as that was the method of proceeding used by the Police. Consequently data in this report is not comparable with data in previously published reports. Comparable data for previous years is available on request.

Data on warnings under the *Young offenders Act*, is available from January 2010 onwards. Due to changes in how warnings are recorded, this data series can not be compared with warning data previously published. A youth justice conference is a face-to-face meeting between offenders, victims and their support persons. The offending behaviour is discussed and an outcome plan for the offender negotiated. Note that both the police and the courts can refer a young person to a youth justice conference. However, the number of alleged offenders proceeded against by way of a youth justice conference, as shown in Table 4.1, includes only police referrals to a youth justice conference.

Since mid-2008, Police have issued compliance notices for breaches of liquor licensing regulations/legislation. Commonly these are for relatively minor breaches eg fail to display regulated signs. Liquor Offence Compliance Notices have been added to the recorded crime collection from the 2015 report. Consequently data in this report is not comparable with data in previously published reports. Comparable data for all years is available on request.

Each offender or alleged offender appears only once in the table for each event. Note that multiple criminal incidents may be associated with a single event. The processes are arranged in a hierarchy with the offender or alleged offender appearing in the most serious category where multiple incidents are involved. For example if an event involves two incidents and the alleged offender is charged for one incident but receives a caution for the second incident, the alleged offender appears only in the relevant 'proceeded against to court' category.

## APPENDIX 2: DEFINITIONS AND EXPLANATORY NOTES *continued*

### PROCEEDINGS AGAINST ALLEGED OFFENDERS *continued*

It should be noted that in previous annual recorded crime reports, data on alleged offenders were categorised by date of reporting to police (or date the incident was detected by police). Given there can be a delay between an event being recorded by police and police commencing legal proceedings this resulted in fewer alleged offenders being counted, particularly during the last three months of the reporting period. For this reason, since the 2017 annual report, alleged offender data is categorised by the date the alleged offender was proceeded against. Therefore in Section 4 the year refers to the year in which alleged offenders were proceeded against. It does not refer to the year in which a criminal incident or incidents were reported to police. For example, if an incident was reported to police in 2016 but the alleged offender was not apprehended and charged until 2017, the alleged offender is counted in 2017. As such, Section 4 of this report is not comparable with alleged offender data published prior to the 2017 annual report. Comparable data for all years is available on request.

### CLEARED CRIMINAL INCIDENTS

A cleared criminal incident is one, which, in the view of police, has been satisfactorily cleared by the commencement of legal proceedings or otherwise.

An incident is cleared by the commencement of legal proceedings when police have laid a charge or an information against at least one person. The information may have been laid with a view to the issuing of a warrant, Future CAN or other process for the purpose of bringing an offender before the court.

A criminal incident is cleared other than by commencement of legal proceedings when, under normal circumstances, a charge or information would have been laid against at least one person, but, for a variety of reasons, police have been unable to make an arrest, despite knowing the identity of the offender and having sufficient evidence to support a charge. Examples of situations in which an offence may be cleared other than by charge include the following:

- the offender is a juvenile and is cautioned;
- the offender has died before a charge is made or information laid;
- the offender has been committed to a psychiatric institution and is unlikely to be released;
- there is an obstacle to charging, such as diplomatic immunity;
- the complainant or essential witness is dead and proceedings would be aborted;
- the offender is serving a sentence and police consider that no useful purpose would be served by prosecution.

The offence types included in these tables are those where the crime is likely to have been reported to police, rather than discovered or detected by police. Offence types where the numbers of recorded criminal incidents are influenced by police law enforcement activity (drug offences, for example) are excluded. For such offence types, the clear-up percentages are very high because clearing the offence generally occurs simultaneously with its detection (that is, an arrest is made when the crime is discovered). This report contains criminal incidents cleared within 30 and 90 days after the incident was reported to the NSW Police Force.

The clear-up status after 30 days could not be determined for any offences reported in the latest month. Hence, Table 5.1 is for the 24-month period ending one month before the quarterly reporting period. Similarly, the clear-up status after 90 days could not be determined for any offences reported in the latest three months. Hence, Table 5.2 and Figure 5.1 is for the 24-month period ending three months before the quarterly reporting period.

### REGIONAL STATISTICS

Statistics are provided on the number of criminal incidents (victims for murder) recorded for each of the Statistical Areas (SAs) of NSW as defined by the Australian Bureau of Statistics (ABS).

Recorded criminal incidents which occurred in correctional, detention or remand centres, however, are not counted in the SA in which the incident occurred. Appendix 4 provides maps indicating the location of each SA. Appendix 5 lists the Local Government Areas (LGAs using 2017 boundaries) within each of the SAs. Note that LGA boundaries change from time to time. A criminal incident is counted within a particular region when the location of the offence falls within that region.

For the rate calculations, specialised population data were prepared and provided to BOCSAR by the Australian Bureau of Statistics.

**APPENDIX 3: BOCSAR OFFENCES MAPPED TO POLICE INCIDENT CATEGORIES**

<b>BOCSAR offence</b>	<b>NSW Police Force incident categories</b>
<b>Homicide</b>	
Murder	Murder
Attempted murder	Murder – attempted Shoot with intent to murder
Murder accessory, conspiracy	Murder – conspiracy Murder – solicit
Manslaughter – not driving	Manslaughter
<b>Assault</b>	
	<i>Includes any of the following offences disaggregated by whether or not police have flagged the incident as domestic violence related:</i>
Domestic violence related	Actual bodily harm Assault common Grievous bodily harm (including malicious wounding) Shoot with intent other than to murder Spike drink/food
Non-domestic violence related	Actual bodily harm Assault common Grievous bodily harm (including malicious wounding) Shoot with intent other than to murder Spike drink/food
Assault Police	Assault Police officer
<b>Sexual offences</b>	
Sexual assault	Sexual assault – adult victim (16+ years old) Sexual assault – child victim, reported when adult Sexual assault – child victim, reported when child
Indecent assault, act of indecency and other sexual offences	Act of indecency Aggravated act of indecency Indecent assault – adult victim (16+ years old) Indecent assault – child victim, reported when child Indecent assault – child victim, reported when adult Bestiality Carnal knowledge Grooming/procuring Incest Indecent communication Peep or pry Wilful and obscene exposure Other sexual offence
<b>Abduction and kidnapping</b>	Kidnapping/Abduction □ People trafficking



**APPENDIX 3: BOCSAR OFFENCES MAPPED TO POLICE INCIDENT CATEGORIES**

<b>BOCSAR offence</b>	<b>NSW Police Force incident categories</b>
<b>Robbery</b>	
Robbery without a weapon	<i>Includes any of the following offences in which no weapon was recorded:</i> Demand money with menaces Robbery Robbery with aggravation Robbery with wounding Other robbery
Robbery with a firearm	<i>Includes any of the following offences in which a firearm was recorded as a weapon:</i> Armed robbery Demand money with menaces Robbery Robbery with aggravation Robbery with wounding Other robbery
Robbery with a weapon not a firearm	<i>Includes any of the following offences in which a non firearm weapon was recorded:</i> Armed robbery Demand money with menaces Robbery Robbery with aggravation Robbery with wounding Other robbery
<b>Blackmail and extortion</b>	Extortion/Blackmail
<b>Intimidation, stalking and harassment</b>	Bullying/harassment or intimidation Stalking (since 2017) Child approach (since 2017) Riot and affray Telecommunications offence ( <i>includes nuisance phone calls</i> ) Threats against Police Violent disorder Unlawful assembly
<b>Other offences against the person</b>	Labour exploitation ( <i>includes sexual servitude</i> ) Malicious damage with intent to injure/endanger Negligent act cause grievous bodily harm Other offence against the person
<b>Theft</b>	
Break and enter – dwelling	<i>Dwelling includes premises where people reside such as house, home unit, caravan, tent as well as any attachment such as garage, shed, yard and garden.</i> Break/Enter and steal Break/Enter and commit other felony Break/Enter intent to steal Break/Enter intent to commit other felony

**APPENDIX 3: BOCSAR OFFENCES MAPPED TO POLICE INCIDENT CATEGORIES**

<b>BOCSAR offence</b>	<b>NSW Police Force incident categories</b>
<b>Theft continued:</b>	
Break and enter – non-dwelling	<i>Non-dwelling includes commercial and government premises.</i> Break/Enter and steal Break/Enter and commit other felony Break/Enter intent to steal Break/Enter intent to commit other felony
Receiving or handling stolen goods	Receiving Goods in custody Possess property stolen outside NSW
Motor vehicle theft	Theft of motor cars, motor cycles, and other vehicles / vessels Rebirthing vehicles / vessels
Steal from motor vehicle	Steal from motor vehicle
Steal from retail store	Steal from retail store
Steal from dwelling	Steal from dwelling Other stealing <i>occurring in a residential dwelling</i>
Steal from person	Steal from person
Stock theft	Steal stock (Non-domestic animal)
Fraud	Company/corporate offence Computer crime Copyright/Intellectual property/Trademark Corrupt commission/practices Corrupt payment (receive or pay) Counterfeit currency Deception offence Embezzlement Fail to pay Forgery (since 2017) Fraudulent misappropriation Larceny clerk/servant/bailee Make/use false instrument Misappropriate cheques/funds Possess false instrument Publish false misleading statement Receiving (fraud related) Scams - obtain funds (since 2017) Scams - selling (since 2017) Unauthorised access of funds (since 2017) Deal/supply false identity documents (since 2017) Deal/supply false information (since 2017) Equipment to make false identity documents (since 2017) Make false identity documents (since 2017) Possess false identity documents (since 2017) Possess identity information (since 2017) Use false identity documents (since 2017) Other fraud

**APPENDIX 3: BOCSAR OFFENCES MAPPED TO POLICE INCIDENT CATEGORIES**

<b>BOCSAR offence</b>	<b>NSW Police Force incident categories</b>
<b>Theft continued:</b> Other theft	Steal from dwelling <i>occurring somewhere other than a residential or non-residential dwelling</i> (e.g. from hostels, motels, boarding houses etc) Steal domestic animal or bird Steal from marine vessel Steal vessel Other stealing <i>occurring somewhere other than a dwelling</i> (e.g. in outdoor/public places)
<b>Arson</b>	<i>Fire incident where classified as deliberate:</i> Bushfire Structure Vehicle (e.g. aircraft/motor vehicle/train/vessel) Other commodity
<b>Malicious damage to property</b>	Graffiti Malicious damage to property Public place – damage fountain/wall etc. Public place – damage shrine/monument
<b>Drug offences</b>	
Possession and/or use of cocaine	Possess drug <i>where drug type is cocaine</i> Use or administer drug <i>where drug type is cocaine</i> Item/object found <i>where drug type is cocaine</i>
Possession and/or use of narcotics	Possess drug <i>where drug type is narcotics</i> Use or administer drug <i>where drug type is narcotics</i> Item/object found <i>where drug type is narcotics</i>
Possession and/or use of cannabis	Possess drug / plant <i>where drug type is cannabis</i> Use or administer drug <i>where drug type is cannabis</i> Item/object found <i>where drug type is cannabis</i>
Possession and/or use of amphetamines	Possess drug <i>where drug type is amphetamines</i> Use or administer drug <i>where drug type is amphetamines</i> Item/object found <i>where drug type is amphetamines</i>
Possession and/or use of ecstasy	Possess drug <i>where drug type is ecstasy</i> Use or administer drug <i>where drug type is ecstasy</i> Item/object found <i>where drug type is ecstasy</i>
Possession and/or use of other drugs	Possess drug <i>where drug type is not cocaine, narcotics, cannabis, amphetamines or ecstasy</i> Use or administer drug <i>where drug type is not cocaine, narcotics, cannabis, amphetamines or ecstasy</i> Item/object found <i>where drug type is not cocaine, narcotics, cannabis, amphetamines or ecstasy</i>
Dealing, trafficking in cocaine	Supply drug <i>where drug type is cocaine</i>
Dealing, trafficking in narcotics	Supply drug <i>where drug type is narcotics</i>

**APPENDIX 3: BOCSAR OFFENCES MAPPED TO POLICE INCIDENT CATEGORIES**

<b>BOCSAR offence</b>	<b>NSW Police Force incident categories</b>
<b>Drug offences</b> continued:	
Dealing, trafficking in cannabis	Supply drug/plant <i>where drug/plant type is cannabis</i>
Dealing, trafficking in amphetamines	Supply drug <i>where drug type is amphetamines</i>
Dealing, trafficking in ecstasy	Supply drug <i>where drug type is ecstasy</i>
Dealing, trafficking in other drugs	Supply drug/plant <i>where drug/plant type is not cocaine, narcotics, cannabis, amphetamines or ecstasy</i>
Cultivating cannabis	Cultivation
Manufacture drug	Manufacture drug
Importing drugs	Import drug/plant
Other drug offences	Forge and/or utter prescription Possess drug utensil Other drug detection/seizure offence
<b>Prohibited and regulated weapons offences</b>	Bomb hoax or threat Discharge firearm into premises Licence offence Firearms dealer offence Firearms not ensure safekeeping Improper storage of explosives Person search - Item/object found <i>where item/object is a weapon</i> Possess explosive/dangerous article Possess prohibited weapon/article Possess shortened firearm Possess whilst unlicensed Sell prohibited weapon/article Shorten firearm Trespass with firearm Unlawful handling/access/supply of explosives Unlawfully discharge firearm Use firearm under influence Use prohibited weapon/article Other explosives offence Other firearm licencing offence Other firearm offence Other prohibited weapon/article offence
<b>Disorderly conduct</b>	
Trespass	Trespass Remain inclosed lands
Offensive conduct	Offensive behaviour
Offensive language	Offensive language
Criminal intent	Armed with intent Disguised with intent Enter land with intent Intent to repeat indictable offence Possess implements

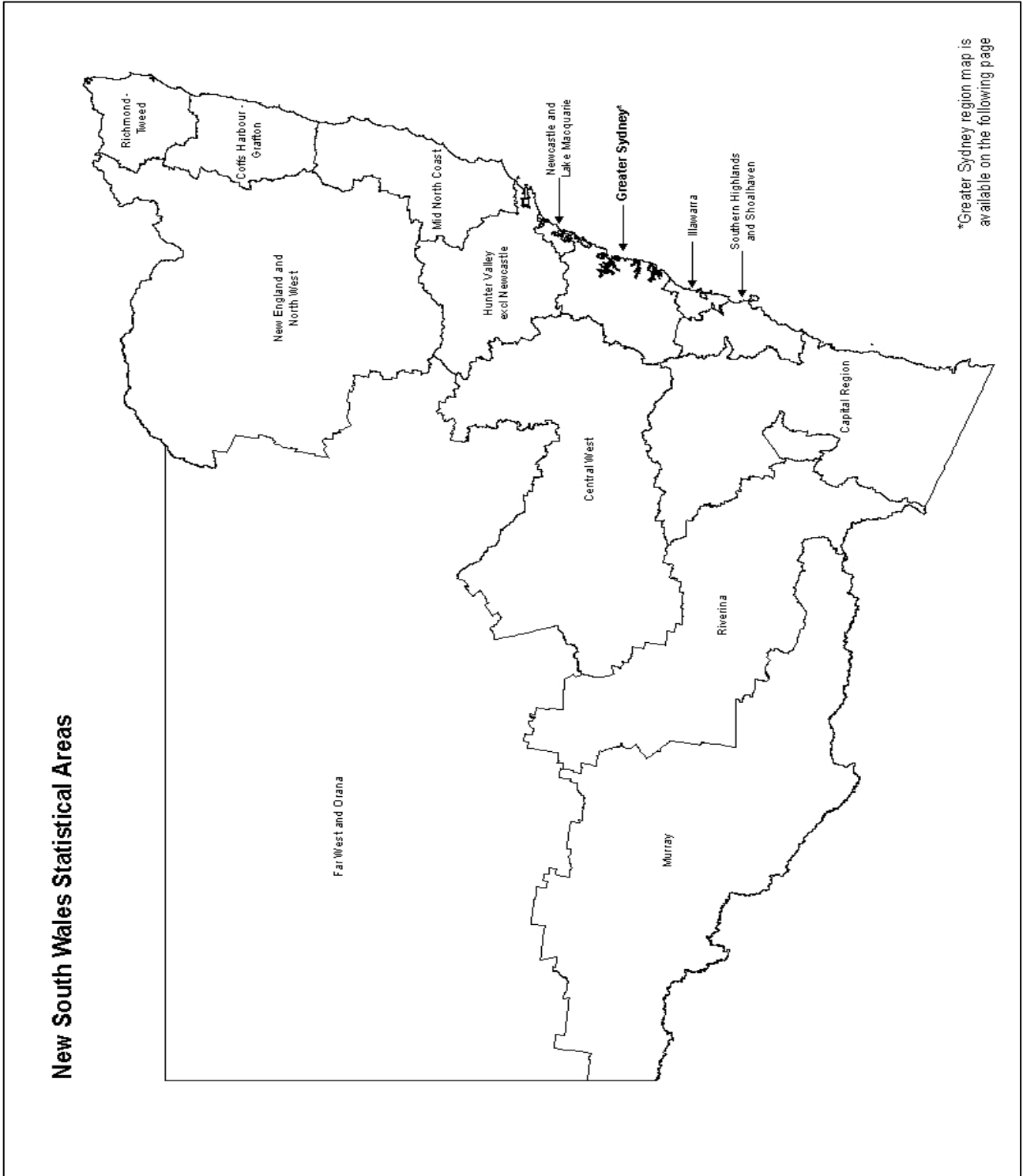
**APPENDIX 3: BOCSAR OFFENCES MAPPED TO POLICE INCIDENT CATEGORIES**

<b>BOCSAR offence</b>	<b>NSW Police Force incident categories</b>
<b>Betting and gaming offences</b>	Conduct/play illegal betting Conduct/play illegal game Own/manage premises – betting Own/manage premises – gaming Other gaming offence
<b>Liquor offences</b>	Consume alcohol in alcohol-free zone Consume/possess alcohol in public by minor Licensing legislation offence: – Offence by licensee/employee/secretary – Offence by minor – Offence by customer (not minor) – Supply liquor to juvenile – Offence against registered clubs legislation
<b>Pornography offences</b>	Possess/disseminate child pornography Possess/publish indecent material
<b>Prostitution offences</b>	Soliciting/prostitution in public Prostitution – premises Prostitution – live off earnings Child prostitution Other vice offence
<b>Against justice procedures</b>	
Escape Custody	Escapee – Corrective Services custody Escapee – Department of Community Services custody Escapee – Police custody Escapee – Other custody
Breach Apprehended Violence Order	Breach Apprehended Violence Order – domestic Breach Apprehended Violence Order – personal
Breach bail conditions	Breach bail conditions Breach control order
Fail to appear	Fail to appear
Resist or hinder officer	Refuse direction Refuse direction continue intoxication and disorder Refuse direction intoxicated person Refuse to be searched Refuse to produce object Resist/hinder officer
Other offences against justice procedures	Breach of recognizance Contravene Child Protection Prohibition Order (CPPO) Other judicial offence
<b>Transport regulatory offences</b>	Transport offence ( <i>includes offences on the rail network such as travelling without a valid ticket, smoking, drinking or using offensive language on a train or railway land</i> ) Buffer riding

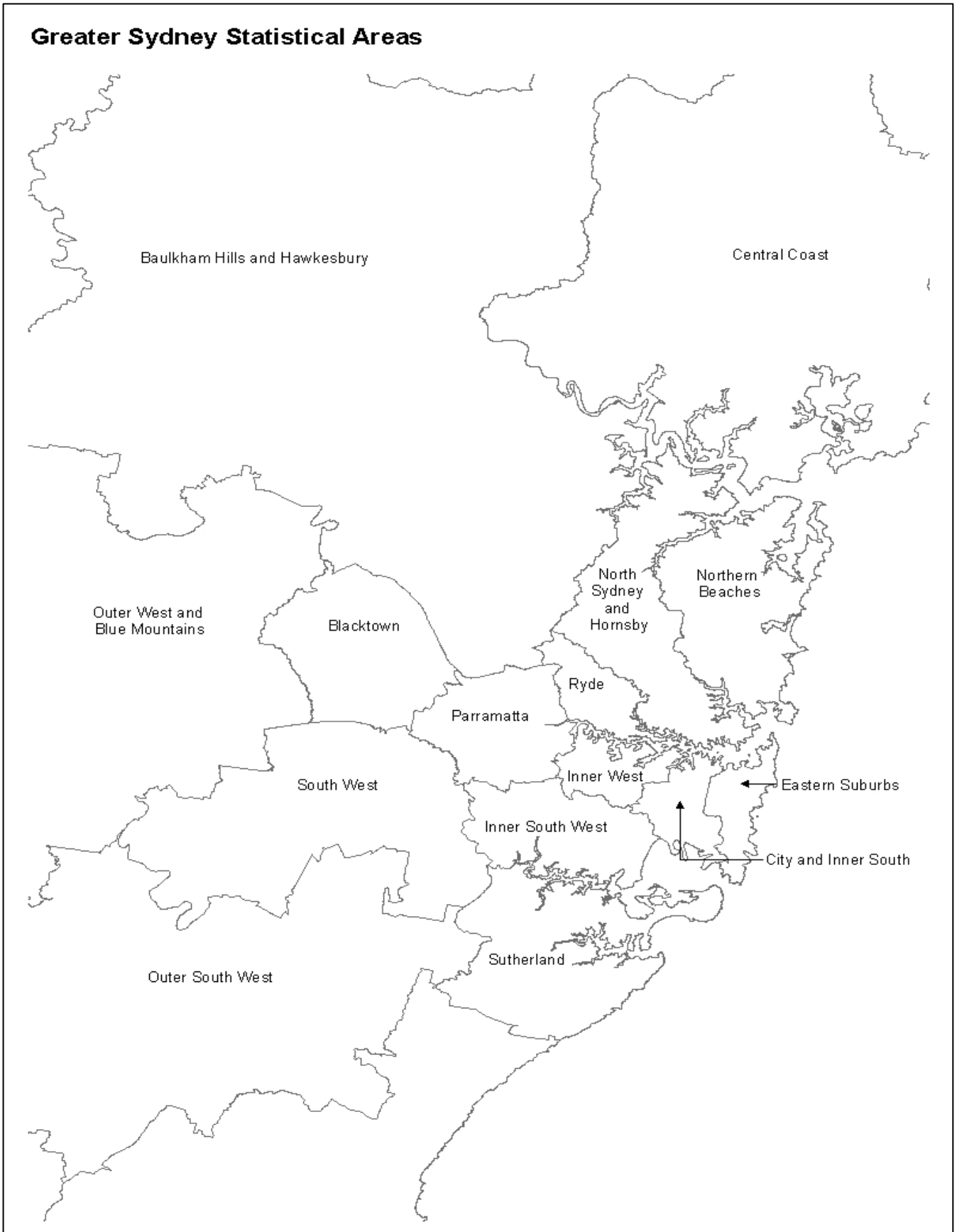
**APPENDIX 3: BOCSAR OFFENCES MAPPED TO POLICE INCIDENT CATEGORIES**

<i>BOCSAR offence</i>	<i>NSW Police Force incident categories</i>
<b>Other offences</b>	Animals - Dog offences Family law offence Immigration/customs offence Obstruction Offence against transport service Other street offences (carry cutting weapon, offensive implement) Public mischief Terrorism offences (e.g. associating with terrorist organisations, financing terrorism etc.) Other miscellaneous offences  Offences under various acts: <i>Animals - Prevention Of Cruelty Acts</i> <i>Bush Fire Act</i> <i>Child Protection Act</i> <i>Local Government Act</i> <i>Marine/Waterway Act</i> <i>Pawnbrokers Act</i> <i>Postal Services Act</i> <i>Security Industry Act</i> <i>Sydney Harbour Bridge Act</i> <i>Tattoo Parlours Act</i>

**APPENDIX 4: NSW & GREATER SYDNEY STATISTICAL AREA MAPS**



**APPENDIX 4: NSW & GREATER SYDNEY STATISTICAL AREA MAPS**





**APPENDIX 5: LGAs IN GREATER SYDNEY STATISTICAL AREAS*****Greater Sydney Statistical Areas***

---

<b><i>Baulkham Hills and Hawkesbury</i></b> Hawkesbury* The Hills Shire*	<b><i>Blacktown</i></b> Blacktown	<b><i>Central Coast</i></b> Central Coast
<b><i>City and Inner South</i></b> Sydney*	<b><i>Eastern Suburbs</i></b> Randwick* Waverley Woollahra	<b><i>Inner South West</i></b> Bayside* Canterbury-Bankstown* Georges River
<b><i>Inner West</i></b> Burwood Canada Bay Inner West* Strathfield*	<b><i>North Sydney and Hornsby</i></b> Hornsby* Ku-ring-gai Lane Cove Mosman North Sydney Willoughby	<b><i>Northern Beaches</i></b> Northern Beaches
<b><i>Outer South West</i></b> Camden* Campbelltown* Wollondilly*	<b><i>Outer West and Blue Mountains</i></b> Blue Mountains* Penrith*	<b><i>Parramatta</i></b> Cumberland* Parramatta*
<b><i>Ryde</i></b> Hunters Hill Ryde*	<b><i>South West</i></b> Fairfield* Liverpool*	<b><i>Sutherland</i></b> Sutherland Shire*

\* These LGAs span across two or more Statistical Areas.

These LGAs are listed under the Greater Sydney Statistical Areas which contain the largest area of each LGA.

**APPENDIX 5: LGAs IN NSW REGIONAL STATISTICAL AREAS*****NSW Regional Statistical Areas***

---

***Capital Region***

Bega Valley  
Eurobodalla  
Goulburn Mulwaree  
Hilltops  
Queanbeyan-Palerang Regional  
Snowy Monaro Regional\*  
Upper Lachlan Shire  
Yass Valley\*

***Central West***

Bathurst Regional  
Bland\*  
Blayney  
Cabonne\*  
Cowra  
Forbes  
Lachlan\*  
Lithgow  
Mid-Western Regional\*  
Oberon\*  
Orange  
Parkes  
Weddin

***Coffs Harbour - Grafton***

Bellingen\*  
Clarence Valley\*  
Coffs Harbour

***Far West and Orana***

Bogan  
Bourke  
Brewarrina  
Broken Hill  
Central Darling  
Cobar  
Coonamble  
Dubbo Regional\*  
Gilgandra  
Narromine  
Unincorporated Far West  
Walgett  
Warren  
Warrumbungle Shire\*

***Hunter Valley excluding Newcastle***

Cessnock  
Dungog  
Maitland\*  
Muswellbrook  
Port Stephens\*  
Singleton\*  
Upper Hunter Shire\*

***Illawarra***

Kiama\*  
Shellharbour  
Wollongong

***Mid North Coast***

Kempsey  
Lord Howe Island  
Mid-Coast\*  
Nambucca\*  
Port Macquarie-Hastings

***Murray***

Albury  
Balranald  
Berrigan  
Edward River  
Federation\*  
Greater Hume Shire\*  
Hay  
Murray River  
Wentworth

***New England and North West***

Armidale Regional\*  
Glen Innes Severn  
Gunnedah  
Gwydir  
Inverell  
Liverpool Plains\*  
Moree Plains  
Narrabri  
Tamworth Regional  
Tenterfield  
Uralla  
Walcha

***Newcastle and Lake Macquarie***

Lake Macquarie\*  
Newcastle

***Richmond - Tweed***

Ballina  
Byron  
Kyogle  
Lismore  
Richmond Valley\*  
Tweed

***Riverina***

Carrathool\*  
Coolamon  
Cootamundra-Gundagai  
Griffith  
Junee  
Leeton  
Lockhart\*  
Murrumbidgee\*  
Narrandera  
Snowy Valleys\*  
Temora  
Wagga Wagga

***Southern Highlands and Shoalhaven***

Shoalhaven\*  
Wingecarribee\*

\* These LGAs span across two or more Statistical Areas.

These LGAs are listed under the NSW Regional Statistical Areas which contain the largest area of each LGA.