

# NEW SOUTH WALES RECORDED CRIME STATISTICS

Quarterly Update  
March 2018

**Revised Edition September 2018**

**NSW  
Statistical Areas  
and  
Local Government Areas**

## REVISED EDITION

This is a revised edition of the original report. The revision was created in September 2018 to incorporate updates to the historic counts of murder and drug possession offences. The murder revisions have increased the number of murder victims by 4% between 2011 and 2017. The drug possession revisions have resulted in a 25% reduction in the volume of these offences from 2010 due to some incidents previously being double counted.

**NSW Bureau of Crime Statistics and Research**

## ACKNOWLEDGEMENTS

The production of this report was greatly assisted by officers within the NSW Police Force. Special thanks are due to officers in Business and Technology Services and in Corporate Information, Executive Support Group.

### REVISED EDITION

This is a revised edition of the original report. The revision was created in September 2018 to incorporate updates to the historic counts of murder and drug possession offences. The murder revisions have increased the number of murder victims by 4% between 2011 and 2017. The drug possession revisions have resulted in a 25% reduction in the volume of these offences from 2010 due to some incidents previously being double counted.

2018

Published by the NSW Bureau of Crime Statistics and Research  
Department of Justice  
Level 1  
Henry Deane Building  
20 Lee St  
Sydney NSW 2000  
Australia

Phone: + 61 (2) 8346 1100  
Fax: + 61 (2) 8364 1298  
Email: [bcsr@justice.nsw.gov.au](mailto:bcsr@justice.nsw.gov.au)  
Website: [www.bocsar.nsw.gov.au](http://www.bocsar.nsw.gov.au)  
ISSN: 1035-9044

This report is available in pdf format on our website and may be provided in alternative formats. Please contact the Bureau on 8346 1100 or email us at [bcsr@justice.nsw.gov.au](mailto:bcsr@justice.nsw.gov.au).

## INTRODUCTION

This report presents data on crime reported to, or detected by, the NSW Police Force from January 1995 to March 2018, with a focus on the statistical trends for the 24 months ending March 2018. The data were extracted from the Computerised Operational Policing System (COPS) of the NSW Police Force in May 2018.

The report includes an overview of trends in the most recent two-year period for major offence categories, firstly for NSW and then across NSW regions broken down to the Local Government Area (LGA) level. At the State level, for the 24-month period to the end of March 2018 two major offence categories were trending upwards: sexual assault (up 7.2%) and indecent assault, act of indecency and other sexual offences (up 6.3%). Three of the 17 major offence categories were trending downwards: break and enter non-dwelling (down 10.0%), steal from motor vehicle (down 3.3%) and fraud (down 3.5%).

The NSW graphs for rates of violent and property offences are on page 7 of the report. For violent offences using the 12-month moving average (light grey line) we can see a downward path from 2004, which has stabilised over the last 5 years. However, the trend tests shown in Table 1.1 indicate that several NSW Statistical Areas are still experiencing significant downward trends in violent crime. The property offences graph using the 6-month moving average (light grey line) indicates a strong downward path from 2000 to 2010, after which there are further declines but at a slower rate. Table 1.1 showing trend tests on the levels of property offences indicates a significant decrease over the last five years.

Dr Don Weatherburn

June 2018

---

© State of New South Wales through the Department of Justice NSW 2017. You may copy, distribute, display, download and otherwise freely deal with this work for any purpose, provided that you attribute the Department of Justice NSW as the owner. However, you must obtain permission if you wish to (a) charge others for access to the work (other than at cost), (b) include the work in advertising or a product for sale, or (c) modify the work.

## CONTENTS

<b>SECTION 1: OVERVIEW OF TRENDS IN VIOLENT AND PROPERTY CRIME</b>	<b>. . . 5</b>
Figure 1.1 NSW long-term trend in violent crime	. . . 7
Figure 1.2 NSW long-term trend in property crime	. . . 7
Table 1.1 Trends in violent and property offences, over the 60 months to March 2018, NSW Statistical Areas (SAs) and NSW	. . . 8
Table 1.2 Trends in violent and property offences, over the 60 months to March 2018, NSW Statistical Areas (SAs) and NSW	. . . 9
Table 1.3 Trends in violent and property offences, over the 60 months to March 2018, NSW Local Government Areas (LGAs)	. . . 10
<b>SECTION 2: OVERVIEW OF TRENDS IN RECORDED CRIME, BY OFFENCE TYPE</b>	<b>. . . 13</b>
Table 2.1 Trends in recorded criminal incidents for major offences, over the 60 months to March 2018, NSW	. . . 14
Table 2.2 Periodic trends in recorded criminal incidents for major offences over the 60 months to March 2018, NSW	. . . 15
Table 2.3 Number and trends in recorded criminal incidents for 62 offences, over the 24 months to March 2018, NSW	. . . 16
Table 2.4 Number and outcome of 24-month trend for major offences, NSW Local Government Areas (LGAs), all reports 2009 to March 2018	17
Figure 2.1A Number of NSW LGAs with significant upward trends for major offences in the 24-month periods to March 2017 and March 2018	. . . 18
Figure 2.1B Number of NSW LGAs with significant downward trends for major offences in the 24-month periods to March 2017 and March 2018	. . . 18
<b>SECTION 3: TRENDS, RATE COMPARISONS AND RECORDED CRIMINAL INCIDENTS FOR MAJOR OFFENCES, NSW REGIONS AND LGAS</b>	<b>. . . 19</b>
Table 3.1A Trends in recorded criminal incidents for major offences, over the 24 months to March 2018, NSW SAs	. . . 20
Table 3.1B Ratio to NSW rate of recorded criminal incidents per 100,000 population for major offences, over the 12 months to March 2018, NSW SAs	. . . 20
Table 3.1C Number of recorded criminal incidents for major offences, over the 12 months to March 2018, NSW SAs	. . . 21
Table 3.1D Number of recorded criminal incidents for major offences, over the 12 months to March 2017, NSW SAs	. . . 21
Table 3.2A Trends in recorded criminal incidents for major offences, over the 24 months to March 2018, Greater Sydney SAs	. . . 22
Table 3.2B Ratio to NSW rate of recorded criminal incidents per 100,000 population for major offences, over the 12 months to March 2018, Greater Sydney SAs	. . . 22
Table 3.2C Number of recorded criminal incidents for major offences, over the 12 months to March 2018, Greater Sydney SAs	. . . 23
Table 3.2D Number of recorded criminal incidents for major offences, over the 12 months to March 2017, Greater Sydney SAs	. . . 23
Table 3.3A Trends in recorded criminal incidents for major offences, over the 24 months to March 2018, NSW LGAs	. . . 24
Table 3.3B Ratio to NSW rate of recorded criminal incidents per 100,000 population for major offences, over the 12 months to March 2018, NSW LGAs	. . . 26

Table 3.3C	Number of recorded criminal incidents for major offences, over the 12 months to March 2018, NSW LGAs	. . . 28
Table 3.3D	Number of recorded criminal incidents for major offences, over the 12 months to March 2017, NSW LGAs	. . . 30
<b>SECTION 4:</b>	<b>METHODS OF PROCEEDINGS AGAINST ALLEGED OFFENDERS</b>	<b>. . . 33</b>
Figure 4.1	Trends in referral methods for alleged offenders proceeded against to court over the 24 months to March 2018, NSW	34
Table 4.1	Number, percentage and trend in alleged offenders proceeded against by NSW Police by method of legal proceedings over the 24 months to March 2018, NSW	. . . 35
Table 4.2	Number, percentage and trend in alleged offenders proceeded against to court by NSW Police for major offences over the 24 months to March 2018, NSW	36
<b>SECTION 5:</b>	<b>CLEARED CRIMINAL INCIDENTS AND WHETHER LEGAL PROCEEDINGS COMMENCED FOR SELECTED OFFENCES</b>	<b>. . . 37</b>
Table 5.1	Number of recorded criminal incidents for selected offences by whether legal proceedings commenced in 30 days of reporting over the 24 months to February 2018, NSW	. . . 38
Table 5.2	Number of recorded criminal incidents for selected offences by whether legal proceedings commenced in 90 days of reporting over the 24 months to December 2017, NSW	39
Figure 5.1	Percentage of recorded criminal incidents for selected offences where legal proceedings commenced within 30 and 90 days, over the 12 months to December 2017, NSW	. . . 40
<b>APPENDICES</b>		<b>41</b>
	<b>APPENDIX 1: TRENDS IN RECORDED CRIMINAL INCIDENTS IN NSW</b>	<b>. . . 42</b>
	<b>APPENDIX 2: DEFINITIONS AND EXPLANATORY NOTES</b>	<b>. . . 43</b>
	<b>APPENDIX 3: BOCSAR OFFENCES MAPPED TO POLICE INCIDENT CATEGORY</b>	<b>. . . 46</b>
	<b>APPENDIX 4: NSW &amp; GREATER SYDNEY STATISTICAL AREA MAPS</b>	<b>. . . 52</b>
	<b>APPENDIX 5: LGAS IN GREATER SYDNEY STATISTICAL AREAS</b>	<b>. . . 54</b>
	<b>APPENDIX 5: LGAS IN NSW REGIONAL STATISTICAL AREAS</b>	<b>. . . 55</b>



---

**SECTION 1:**

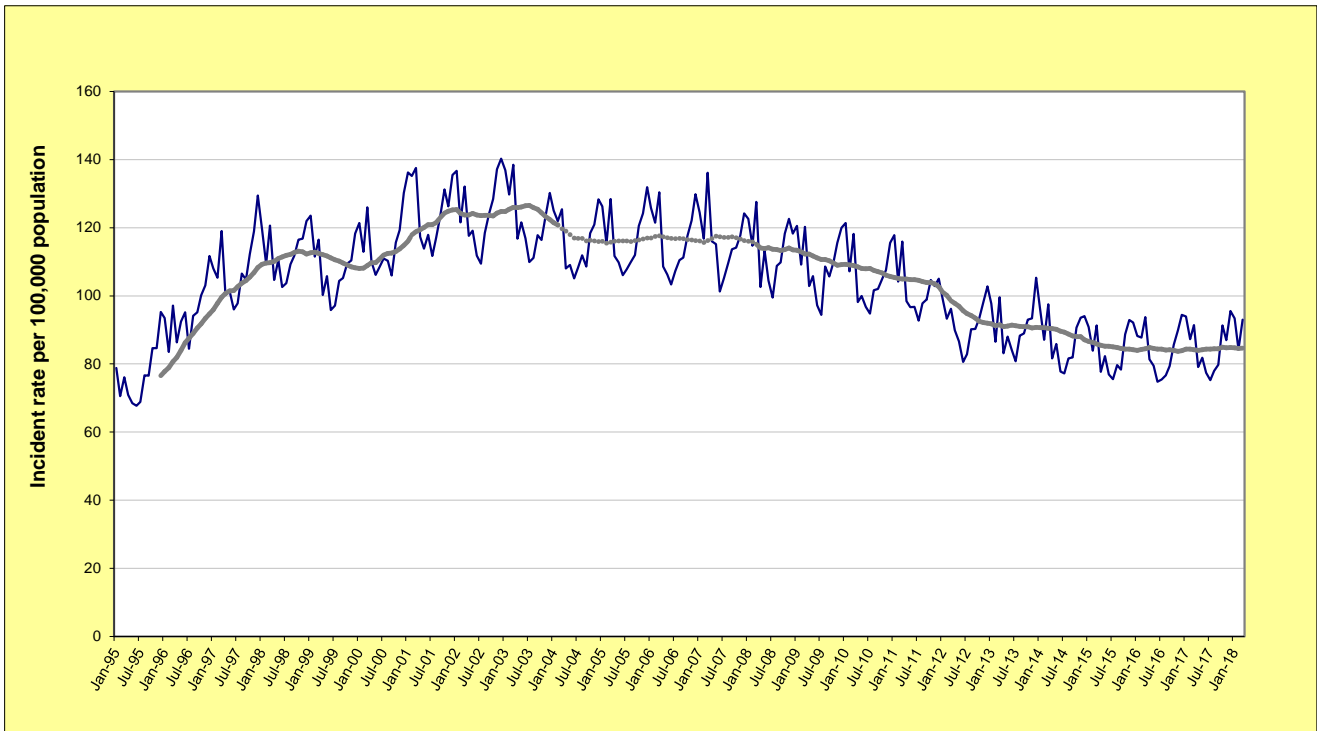
**OVERVIEW OF TRENDS  
IN VIOLENT AND PROPERTY CRIME**

---

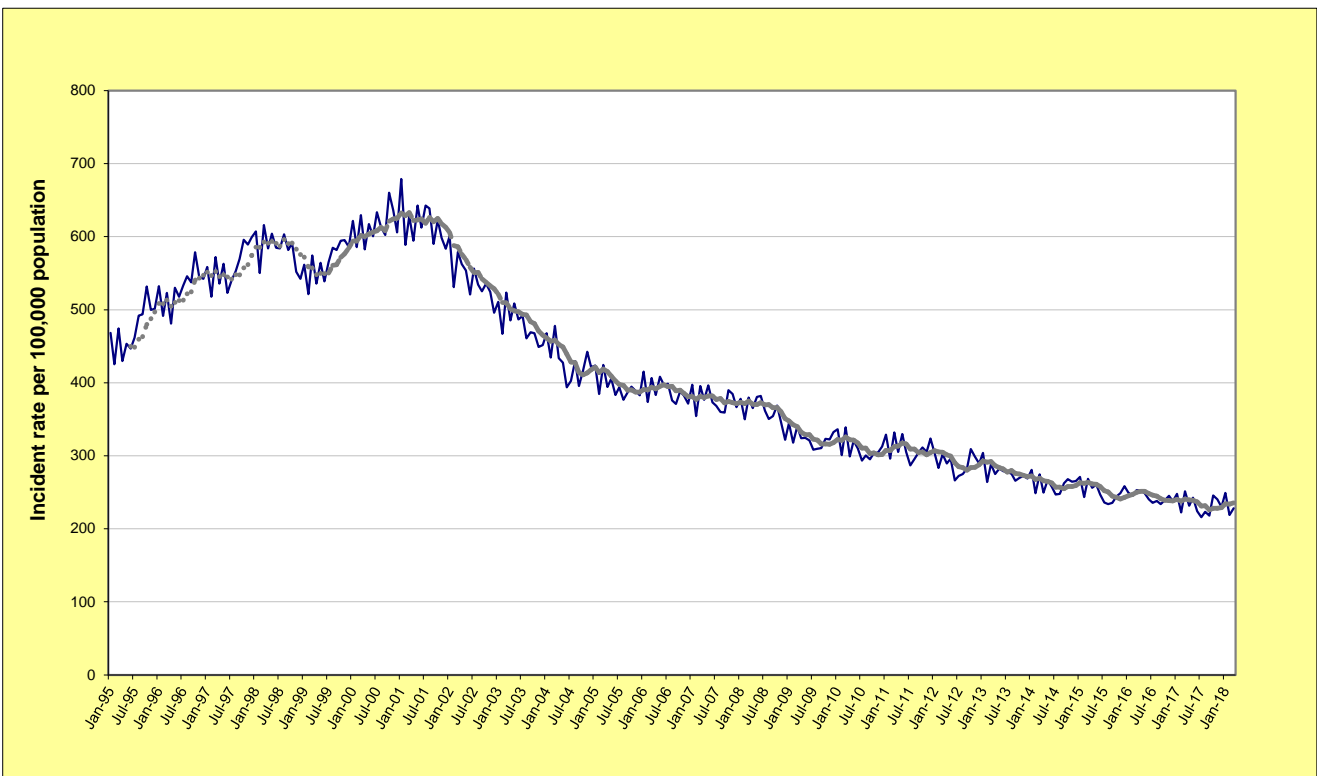




**FIGURE 1.1: NSW LONG-TERM TREND IN VIOLENT OFFENCES\***



**FIGURE 1.2: NSW LONG-TERM TREND IN PROPERTY OFFENCES\*\***



\* **Violent offences** include: murder, attempted murder, manslaughter, assault - domestic violence related, assault - non-domestic violence related, assault police, robbery without a weapon, robbery with a firearm, robbery with a weapon not a firearm, sexual assault and indecent assault / act of indecency / other sexual offences.

\*\* **Property offences** include: break and enter dwelling, break and enter non-dwelling, motor vehicle theft, steal from motor vehicle, steal from retail store, steal from dwelling, steal from person, stock theft, other theft and fraud.

For further explanation of **violent offences** and **property offences**, see page 42, Note [7].

**TABLE 1.1: TRENDS<sup>^</sup> IN RECORDED CRIMINAL INCIDENTS, VIOLENT AND PROPERTY OFFENCES  
OVER THE 60 MONTHS TO MARCH 2018, NSW STATISTICAL AREAS (SAs) AND NSW**

NSW Statistical Area	Violent Offences*			Property Offences**		
	Annual percentage change over the last 24 months	Average annual percentage change over the last 60 months	Ratio <sup>#</sup> to NSW rate	Annual percentage change over the last 24 months	Average annual percentage change over the last 60 months	Ratio <sup>#</sup> to NSW rate
Greater Sydney	Stable	Stable	0.9	-3.7%	-4.0%	0.9
Capital Region	5.5%	Stable	0.9	Stable	Stable	0.8
Central West	Stable	Stable	1.4	-18.0%	-6.0%	1.0
Coffs Harbour - Grafton	7.1%	Stable	1.4	Stable	Stable	1.1
Far West and Orana	Stable	Stable	2.4	-23.5%	Stable	1.8
Hunter Valley excluding Newcastle	Stable	1.8%	1.2	-5.7%	Stable	1.2
Illawarra	Stable	-3.2%	0.8	Stable	-4.1%	0.9
Mid North Coast	Stable	Stable	1.2	6.0%	Stable	1.1
Murray	-3.2%	-5.0%	1.1	Stable	Stable	1.1
New England and North West	Stable	Stable	1.6	Stable	1.7%	1.5
Newcastle and Lake Macquarie	Stable	Stable	1.2	Stable	Stable	1.4
Richmond - Tweed	Stable	-3.2%	1.1	Stable	-3.9%	0.9
Riverina	Stable	Stable	1.4	Stable	1.4%	1.3
Southern Highlands and Shoalhaven	Stable	Stable	0.9	-11.8%	-7.5%	0.7
<b>NSW</b>	Stable	Stable	<b>1.0</b>	Stable	-3.1%	<b>1.0</b>

<sup>^</sup> For further explanation of trend results, see page 42, Notes [5] and [6].

\* **Violent offences** include: murder, assault - domestic violence related, assault - non-domestic violence related, assault police, robbery without a weapon, robbery with a firearm, robbery with a weapon not a firearm, sexual assault and indecent assault / act of indecency / other sexual offences.

\*\* **Property offences** include: break and enter dwelling, break and enter non-dwelling, motor vehicle theft, steal from motor vehicle, steal from retail store, steal from dwelling, steal from person, stock theft, other theft and fraud.

For further explanation of violent offences and property offences, see page 42, Note [7].

<sup>#</sup> For further explanation of rate calculation populations and the ratio to NSW rate, see page 42, Footnote 2 and Note [8].

**TABLE 1.2: TRENDS<sup>^</sup> IN RECORDED CRIMINAL INCIDENTS, VIOLENT AND PROPERTY OFFENCES  
OVER THE 60 MONTHS TO MARCH 2018, GREATER SYDNEY STATISTICAL AREAS (SAs)**

Greater Sydney Statistical Area	Violent Offences*			Property Offences**		
	Annual percentage change over the last 24 months	Average annual percentage change over the last 60 months	Ratio <sup>#</sup> to NSW rate	Annual percentage change over the last 24 months	Average annual percentage change over the last 60 months	Ratio <sup>#</sup> to NSW rate
Baulkham Hills and Hawkesbury	Stable	Stable	0.4	Stable	Stable	0.5
Blacktown	1.6%	Stable	1.3	7.8%	1.7%	1.3
Central Coast	Stable	3.3%	1.2	-12.6%	Stable	0.9
City and Inner South	7.9%	Stable	2.0	-6.8%	-7.5%	2.1
Eastern Suburbs	Stable	2.0%	0.7	Stable	-6.6%	0.8
Inner South West	Stable	Stable	0.7	-3.6%	-8.1%	0.7
Inner West	Stable	Stable	0.6	-12.1%	-5.5%	0.8
North Sydney and Hornsby	Stable	Stable	0.4	Stable	-1.1%	0.7
Northern Beaches	Stable	Stable	0.5	Stable	-2.6%	0.6
Outer South West	Stable	Stable	1.0	-12.9%	-4.4%	0.8
Outer West and Blue Mountains	4.2%	Stable	1.2	Stable	Stable	1.1
Parramatta	Stable	-2.2%	0.9	Stable	-3.7%	1.1
Ryde	Stable	Stable	0.4	Stable	-1.1%	0.7
South West	Stable	Stable	0.9	-6.6%	-3.9%	0.9
Sutherland	Stable	2.0%	0.6	Stable	-3.8%	0.6

<sup>^</sup> For further explanation of trend results, see page 42, Notes [5] and [6].

\* **Violent offences** include: murder, assault - domestic violence related, assault - non-domestic violence related, assault police, robbery without a weapon, robbery with a firearm, robbery with a weapon not a firearm, sexual assault and indecent assault / act of indecency / other sexual offences.

\*\* **Property offences** include: break and enter dwelling, break and enter non-dwelling, motor vehicle theft, steal from motor vehicle, steal from retail store, steal from dwelling, steal from person, stock theft, other theft and fraud.

For further explanation of violent offences and property offences, see page 42, Note [7].

<sup>#</sup> For further explanation of rate calculation populations and the ratio to NSW rate, see page 42, Footnote 2 and Note [8].

**TABLE 1.3: TRENDS<sup>a</sup> IN RECORDED CRIMINAL INCIDENTS, VIOLENT AND PROPERTY OFFENCES, OVER THE 60 MONTHS TO MARCH 2018, NSW LOCAL GOVERNMENT AREAS (LGAs)**

NSW LGAs	Violent Offences*			Property Offences*		
	Annual percentage change over the last 24 months	Average annual percentage change over the last 60 months	Ratio <sup>#</sup> to NSW rate	Annual percentage change over the last 24 months	Average annual percentage change over the last 60 months	Ratio <sup>#</sup> to NSW rate
Albury	ns	ns	1.4	ns	ns	1.6
Armidale Regional	ns	-4.4	1.5	ns	ns	1.6
Ballina	8.2	ns	0.9	ns	ns	0.9
Balranald	.	.	.	ns	ns	.
Bathurst Regional	12.1	ns	1.4	-23.8	ns	1.1
Bayside	3.9	4.3	0.7	ns	-7.9	0.8
Bega Valley	ns	ns	0.8	ns	4.0	0.6
Bellingen	ns	ns	0.8	ns	ns	0.7
Berrigan	ns	ns	0.5	ns	ns	0.5
Blacktown	1.2	ns	1.3	7.4	1.7	1.3
Bland	ns	ns	0.9	ns	ns	0.7
Blayney	ns	ns	1.0	-45.9	ns	0.5
Blue Mountains	ns	ns	0.9	ns	-4.3	0.6
Bogan	ns	ns	.	ns	ns	.
Bourke	ns	-6.9	.	ns	ns	.
Brewarrina	ns	-14.2	.	ns	ns	.
Broken Hill	19.7	ns	2.3	ns	ns	1.5
Burwood	ns	ns	0.7	ns	-9.3	1.2
Byron	13.7	ns	1.4	ns	ns	1.4
Cabonne	ns	-6.6	0.5	ns	ns	0.6
Camden	16.4	9.3	0.8	-7.1	ns	0.6
Campbelltown	ns	-4.4	1.2	-12.4	-5.0	1.0
Canada Bay	ns	-4.6	0.3	-10.0	-2.5	0.7
Canterbury-Bankstown	ns	ns	0.7	-6.2	-7.3	0.8
Carrathool	ns	ns	.	ns	5.7	.
Central Coast	ns	3.3	1.2	-12.6	ns	0.9
Central Darling	ns	ns	.	ns	ns	.
Cessnock	ns	ns	1.3	-7.5	ns	1.5
Clarence Valley	ns	ns	1.2	ns	-3.4	1.1
Cobar	ns	ns	2.0	-35.4	-12.5	1.1
Coffs Harbour	11.3	4.1	1.8	ns	ns	1.3
Coolamon	ns	ns	0.8	ns	ns	0.6
Coonamble	ns	ns	3.1	ns	ns	2.6
Cootamundra-Gundagai	ns	ns	1.1	ns	5.0	0.9
Cowra	ns	ns	1.4	ns	ns	1.2
Cumberland	ns	-3.2	0.9	ns	-4.7	1.0
Dubbo Regional	ns	ns	2.0	-29.0	ns	2.0
Dungog	ns	ns	0.8	ns	ns	0.5
Edward River	ns	ns	1.2	ns	ns	0.8
Eurobodalla	12.3	ns	1.2	ns	ns	0.9
Fairfield	ns	ns	0.8	-4.9	-6.3	0.8
Federation	ns	ns	0.6	ns	-5.0	0.8
Forbes	ns	ns	1.4	ns	ns	1.3
Georges River	ns	ns	0.6	ns	-8.2	0.6
Gilgandra	ns	ns	1.7	ns	-8.6	1.4
Glen Innes Severn	ns	14.7	2.1	-46.9	ns	1.0
Goulburn Mulwaree	19.1	ns	1.2	ns	8.7	0.9
Greater Hume Shire	ns	ns	0.5	ns	ns	0.6
Griffith	-11.4	ns	1.5	ns	ns	1.4
Gunnedah	ns	ns	1.5	27.3	-9.3	1.1
Gwydir	ns	ns	0.9	ns	ns	0.6
Hawkesbury	ns	ns	0.9	-26.7	-9.3	0.7
Hay	ns	ns	.	ns	ns	.
Hilltops	24.8	ns	1.5	ns	ns	0.8
Hornsby	ns	ns	0.3	ns	ns	0.5
Hunters Hill	38.2	ns	0.5	ns	ns	0.6
Inner West	ns	-2.8	0.7	-12.3	-7.7	0.9
Inverell	ns	ns	1.6	ns	9.9	1.5
Junee	-50.6	ns	0.6	ns	ns	0.7
Kempsey	7.3	ns	1.8	ns	ns	1.6
Kiama	ns	ns	0.4	ns	ns	0.6
Ku-ring-gai	ns	ns	0.2	ns	ns	0.4
Kyogle	ns	ns	1.1	ns	ns	0.5
Lachlan	ns	ns	2.1	ns	-13.7	1.1
Lake Macquarie	7.3	ns	1.0	ns	ns	1.0

**TABLE 1.3: TRENDS<sup>^</sup> IN RECORDED CRIMINAL INCIDENTS, VIOLENT AND PROPERTY OFFENCES, OVER THE 60 MONTHS TO MARCH 2018, NSW LOCAL GOVERNMENT AREAS (LGAs)**

NSW LGAs	Violent Offences*			Property Offences*		
	Annual percentage change over the last 24 months	Average annual percentage change over the last 60 months	Ratio <sup>#</sup> to NSW rate	Annual percentage change over the last 24 months	Average annual percentage change over the last 60 months	Ratio <sup>#</sup> to NSW rate
Lane Cove	ns	ns	0.3	ns	ns	0.6
Leeton	18.7	ns	1.6	ns	3.8	1.1
Lismore	ns	ns	1.4	-12.0	ns	1.0
Lithgow	ns	ns	1.3	-16.3	-7.5	1.0
Liverpool	ns	ns	1.0	-8.8	-2.9	1.0
Liverpool Plains	ns	ns	1.2	ns	5.6	0.9
Lockhart	.	.	1.0	-41.1	ns	0.4
Lord Howe Island	.	.	.	.	.	.
Maitland	6.8	4.5	1.3	ns	5.5	1.4
Mid-Coast	ns	ns	1.2	3.3	ns	1.1
Mid-Western Regional	ns	ns	1.3	ns	-5.2	0.8
Moree Plains	ns	-3.6	3.7	ns	ns	4.1
Mosman	ns	ns	0.4	ns	ns	0.5
Murray River	ns	ns	0.4	-20.8	ns	0.8
Murrumbidgee	ns	ns	1.3	ns	ns	0.6
Muswellbrook	ns	ns	1.6	-17.8	-5.9	1.3
Nambucca	ns	ns	1.4	16.9	ns	1.4
Narrabri	ns	ns	1.5	ns	-6.6	1.1
Narrandera	ns	ns	1.3	ns	ns	1.9
Narramine	ns	ns	1.9	-35.3	ns	1.6
Newcastle	ns	ns	1.4	ns	2.7	1.9
North Sydney	ns	ns	0.6	ns	-4.7	0.8
Northern Beaches	ns	ns	0.5	ns	-2.6	0.6
Oberon	ns	ns	0.9	ns	-5.4	0.6
Orange	ns	-3.9	1.7	ns	-7.3	1.4
Parkes	ns	ns	1.7	-19.9	ns	1.1
Parramatta	7.3	ns	0.8	ns	-1.9	1.1
Penrith	4.9	1.7	1.3	ns	ns	1.3
Port Macquarie-Hastings	ns	-5.6	0.9	12.1	ns	0.8
Port Stephens	ns	ns	1.1	-11.5	-7.4	0.9
Queanbeyan-Palerang Regional	ns	ns	0.6	ns	ns	0.9
Randwick	ns	2.4	0.8	-10.4	-5.8	0.8
Richmond Valley	ns	ns	1.5	-16.7	-7.5	1.0
Ryde	ns	ns	0.5	ns	ns	0.8
Shellharbour	ns	ns	0.8	ns	-6.3	0.8
Shoalhaven	ns	ns	1.0	ns	-7.6	0.8
Singleton	23.4	ns	1.1	ns	-3.7	1.0
Snowy Monaro Regional	ns	ns	0.8	ns	-10.2	0.5
Snowy Valleys	ns	ns	1.3	ns	17.0	1.4
Strathfield	ns	ns	0.8	-8.7	-4.8	1.1
Sutherland Shire	ns	2.0	0.6	ns	-3.8	0.6
Sydney	ns	ns	2.5	-7.7	-7.6	2.6
Tamworth Regional	ns	ns	1.5	ns	4.8	1.6
Temora	ns	ns	0.9	ns	ns	0.7
Tenterfield	ns	ns	1.3	-43.3	ns	0.9
The Hills Shire	ns	ns	0.4	ns	ns	0.6
Tweed	ns	-5.0	0.8	ns	-4.9	0.8
Unincorporated Far West	.	.	.	.	.	.
Upper Hunter Shire	ns	ns	0.7	ns	ns	0.8
Upper Lachlan Shire	ns	ns	0.4	ns	ns	0.4
Uralla	ns	ns	0.8	ns	ns	0.5
Wagga Wagga	ns	1.4	1.5	ns	ns	1.7
Walcha	ns	ns	1.0	ns	ns	0.5
Walgett	14.7	-6.2	4.2	ns	ns	2.1
Warren	ns	ns	.	ns	ns	.
Warrumbungle Shire	ns	ns	1.3	ns	-7.0	0.8
Waverley	ns	1.3	0.8	ns	-5.8	1.1
Weddin	ns	.	0.6	ns	ns	0.5
Wentworth	37.4	ns	2.2	ns	ns	1.3
Willoughby	14.3	4.3	0.5	ns	ns	0.9
Wingecarribee	ns	ns	0.6	-23.7	-7.2	0.5
Wollondilly	ns	ns	0.6	ns	ns	0.4
Wollongong	ns	-3.1	0.9	ns	-3.7	1.0
Woollahra	ns	ns	0.5	ns	-8.2	0.7
Yass Valley	ns	ns	0.5	ns	ns	0.5
NSW	ns	ns	1.0	ns	-3.1	1.0

<sup>^</sup> For further explanation of trend results, see page 42, Notes [5] and [6].

\* For further explanation of violent offences and property offences, see page 42, Note [7].

# For further explanation of rate calculation populations and the ratio to NSW rate, see page 42, Footnote 2 and Note [8].

Sydney LGA can be considered a special case since the population used to calculate the rate is much lower than the population using the area for work and entertainment. This will be reflected in higher incident rates.



---

**SECTION 2:**  
**OVERVIEW OF TRENDS**  
**IN RECORDED CRIME**  
**BY OFFENCE TYPE**  
**NSW**

---

**TABLE 2.1: TRENDS<sup>^</sup> IN RECORDED CRIMINAL INCIDENTS FOR MAJOR OFFENCES  
OVER THE 60 MONTHS TO MARCH 2018, NSW**

<b>Offence category</b>	<b>Trend result and annual percentage change over the last 24 months</b>	<b>Trend result and average annual percentage change over the last 60 months</b>
Murder *	Stable	Down by 11.0%
Domestic violence related assault	Stable	Stable
Non-domestic violence related assault	Stable	Stable
Sexual assault	Up by 7.2%	Up by 4.3%
Indecent assault, act of indecency and other sexual offences	Up by 6.3%	Up by 2.7%
Robbery without a weapon	Stable	Down by 10.6%
Robbery with a firearm	Stable	Down by 20.7%
Robbery with a weapon not a firearm	Stable	Down by 10.3%
Break and enter dwelling	Stable	Down by 5.8%
Break and enter non-dwelling	Down by 10.0%	Down by 7.4%
Motor vehicle theft	Stable	Down by 4.5%
Steal from motor vehicle	Down by 3.3%	Down by 3.0%
Steal from retail store	Stable	Up by 3.5%
Steal from dwelling	Stable	Down by 3.0%
Steal from person	Stable	Down by 9.9%
Fraud	Down by 3.5%	Stable
Malicious damage to property	Stable	Down by 5.2%

<sup>^</sup> For further explanation of trend results, see page 42, Notes [5] and [6].

\* For murder, the trend test is applied to the monthly number of recorded victims rather than criminal incidents.



**TABLE 2.2: PERIODIC TRENDS<sup>^</sup> IN RECORDED CRIMINAL INCIDENTS FOR MAJOR OFFENCES, OVER THE 60 MONTHS TO MARCH 2018, NSW**

<i>Offence category</i>	<i>Trend result and annual percentage change</i>				
	<i>Apr 2012 - Mar 2014</i>	<i>Apr 2013 - Mar 2015</i>	<i>Apr 2014 - Mar 2016</i>	<i>Apr 2015 - Mar 2017</i>	<i>Apr 2017 - Mar 2018</i>
Murder *	Stable	Stable	Stable	Stable	Stable
Domestic violence related assault	2.8%	Stable	Stable	Stable	Stable
Non-domestic violence related assault	Stable	Stable	Stable	2.6%	Stable
Sexual assault	Stable	Stable	Stable	4.7%	7.2%
Indecent assault, act of indecency and other sexual offences	16.0%	Stable	9.7%	Stable	6.3%
Robbery without a weapon	-15.5%	-17.4%	-22.9%	Stable	Stable
Robbery with a firearm	Stable	-17.4%	-37.6%	Stable	Stable
Robbery with a weapon not a firearm	Stable	-15.5%	-21.6%	-10.2%	Stable
Break and enter dwelling	-13.2%	Stable	Stable	-5.7%	Stable
Break and enter non-dwelling	-10.8%	-9.1%	-6.9%	Stable	-10.0%
Motor vehicle theft	-10.2%	Stable	Stable	Stable	Stable
Steal from motor vehicle	-3.6%	-4.4%	-5.0%	Stable	-3.3%
Steal from retail store	Stable	Stable	8.4%	5.7%	Stable
Steal from dwelling	Stable	2.9%	Stable	Stable	Stable
Steal from person	-12.7%	-12.2%	Stable	-15.1%	Stable
Fraud	9.6%	Stable	Stable	Stable	-3.5%
Malicious damage to property	-7.5%	-10.7%	Stable	Stable	Stable

<sup>^</sup> For further explanation of trend results, see page 42, Notes [5] and [6].

\* For murder, the trend test is applied to the monthly number of recorded victims rather than criminal incidents.

**TABLE 2.3: NUMBER AND TRENDS<sup>^</sup> IN RECORDED CRIMINAL INCIDENTS FOR 62 OFFENCES OVER THE 24 MONTHS TO MARCH 2018, NSW**

Offence Category		Number of recorded criminal incidents		Trend <sup>^</sup> over the last 24 months	
		over the 12 months to March 2017	over the 12 months to March 2018	Trend test result	Percentage change
Homicide	Murder*	71	52	Stable	
	Attempted murder	25	17	.	
	Murder accessory, conspiracy	3	2	.	
	Manslaughter*	5	6	.	
Assault	Domestic violence related assault	29,043	28,268	Stable	
	Non-domestic violence related assault	31,874	32,156	Stable	
	Assault Police	2,283	2,343	Stable	
Sexual offences	Sexual assault	5,376	5,764	Up	7.2%
	Indecent assault, act of indecency and other sexual offences	7,100	7,545	Up	6.3%
Abduction and kidnapping		230	209	Stable	
Robbery	Robbery without a weapon	1,400	1,464	Stable	
	Robbery with a firearm	163	130	Stable	
	Robbery with a weapon not a firearm	813	886	Stable	
Blackmail and extortion		97	93	Stable	
Intimidation, stalking and harassment		30,348	31,086	Up	2.4%
Other offences against the person		1,319	1,096	Stable	
Theft	Break and enter dwelling	29,269	27,315	Stable	
	Break and enter non-dwelling	11,479	10,328	Down	-10.0%
	Receiving or handling stolen goods	8,158	7,409	Down	-9.2%
	Motor vehicle theft	13,159	12,960	Stable	
	Steal from motor vehicle	40,366	39,053	Down	-3.3%
	Steal from retail store	23,786	24,508	Stable	
	Steal from dwelling	21,200	19,314	Stable	
	Steal from person	4,703	4,549	Stable	
	Stock theft	484	439	Stable	
	Fraud	50,318	48,554	Down	-3.5%
Other theft	29,081	27,222	Stable		
Arson		5,682	5,891	Stable	
Malicious damage to property		62,310	60,330	Stable	
Drug offences	Possession and/or use of cocaine	1,449	2,117	Up	46.1%
	Possession and/or use of narcotics	958	973	Stable	
	Possession and/or use of cannabis	18,407	18,100	Stable	
	Possession and/or use of amphetamines	7,222	6,664	Down	-7.7%
	Possession and/or use of ecstasy	2,740	2,790	Stable	
	Possession and/or use of other drugs	4,279	4,430	Stable	
	Dealing, trafficking in cocaine	484	752	Stable	
	Dealing, trafficking in narcotics	541	218	Down	-59.7%
	Dealing, trafficking in cannabis	849	804	Down	-5.3%
	Dealing, trafficking in amphetamines	2,206	1,633	Down	-26.0%
	Dealing, trafficking in ecstasy	651	733	Up	12.6%
	Dealing, trafficking in other drugs	277	339	Stable	
	Cultivating cannabis	1,073	1,140	Stable	
Manufacture drug	56	67	Stable		
Importing drugs	60	79	Stable		
Other drug offences	5,294	5,210	Stable		
Prohibited and regulated weapons offences		12,471	12,926	Stable	
Disorderly conduct	Trespass	10,084	9,948	Stable	
	Offensive conduct	5,382	5,039	Stable	
	Offensive language	3,505	3,143	Stable	
	Criminal intent	2,263	2,218	Stable	
Betting and gaming offences		98	62	Stable	
Liquor offences		11,179	11,054	Stable	
Pornography offences		584	604	Stable	
Prostitution offences		75	51	Stable	
Against justice procedures	Escape custody	195	160	Stable	
	Breach Apprehended Violence Order	15,344	14,927	Stable	
	Breach bail conditions	42,437	42,268	Stable	
	Fail to appear	707	546	Down	-22.8%
	Resist or hinder officer	6,269	6,204	Stable	
Other offences against justice procedures	580	556	Stable		
Transport regulatory offences		124,809	125,926	Stable	
Other offences		14,875	14,495	Stable	

<sup>^</sup> For further explanation of trend results, see page 42, Notes [5] and [6].

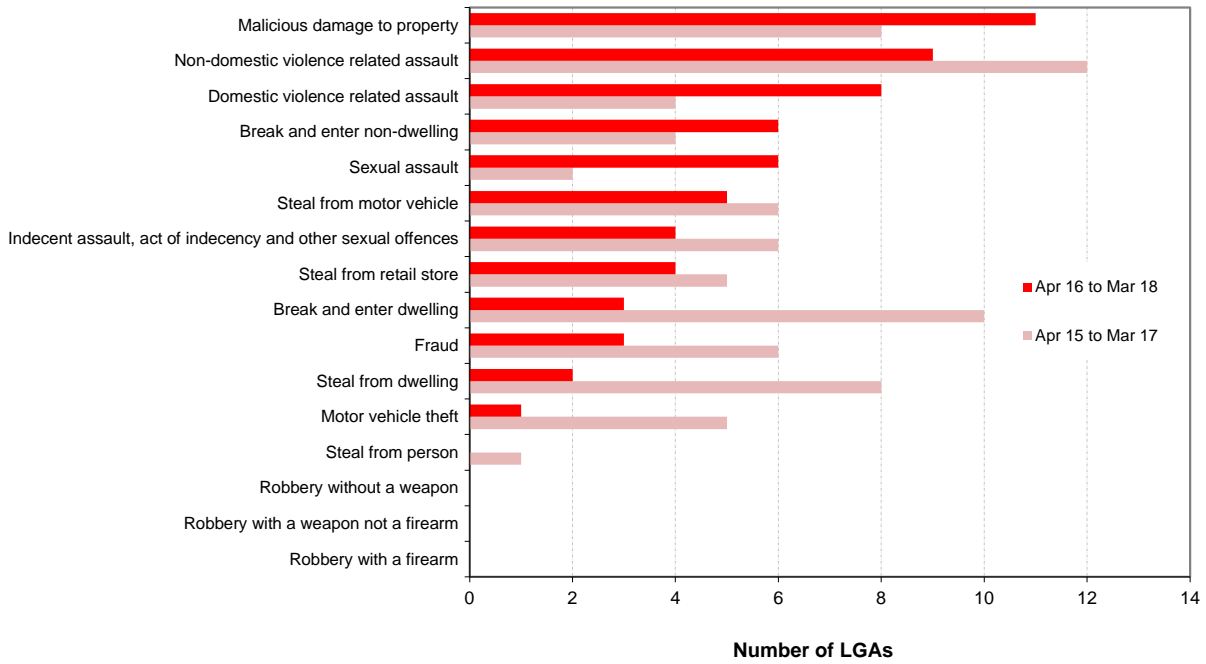
\* For murder and manslaughter incidents, the trend test is applied to the monthly number of recorded victims rather than criminal incidents.

**TABLE 2.4: NUMBER AND OUTCOME<sup>^</sup> OF 24-MONTH TREND TESTS FOR MAJOR OFFENCES, NSW LOCAL GOVERNMENT AREAS (LGAs), ALL REPORTS 2010 TO MARCH 2018**

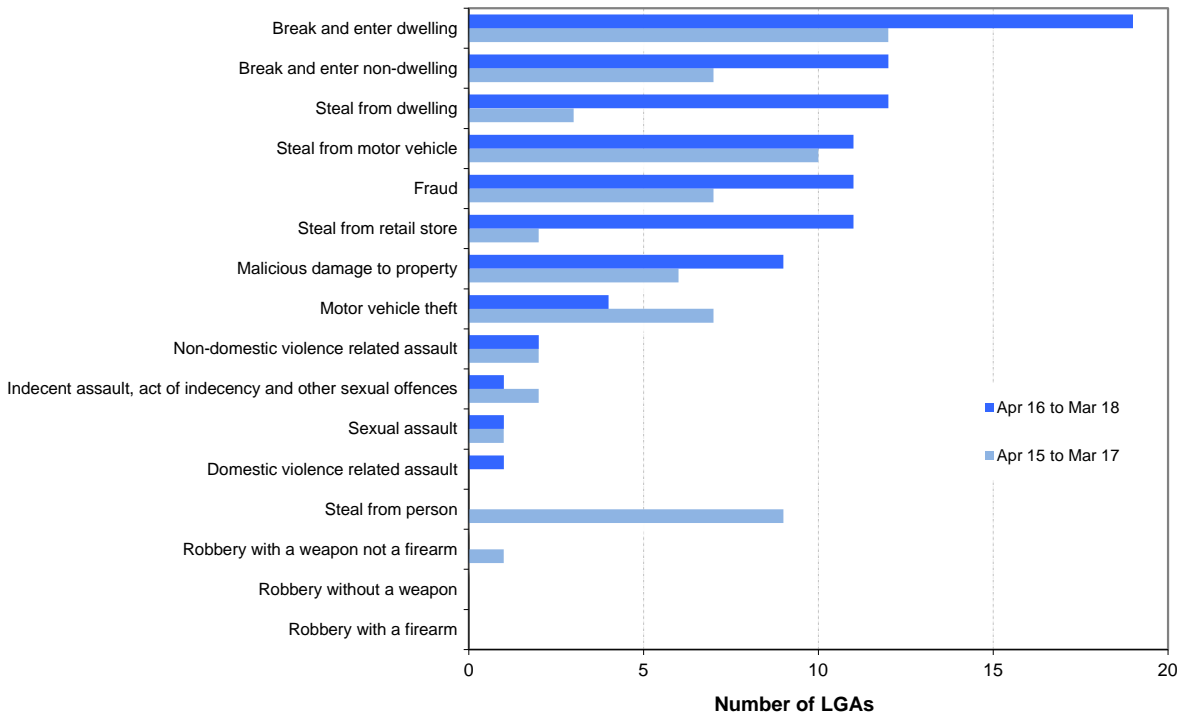
<b>Year</b>	<b>Final month for 24-month trend test</b>	<b>Number of LGAs</b>	<b>Number of trend tests</b>	<b>Stable trends (%)</b>	<b>Downward trends (%)</b>	<b>Upward trends (%)</b>
<b>2010</b>	March	130	1,255	82.1	11.8	6.1
	June	130	1,254	83.0	12.4	4.6
	September	130	1,264	81.4	14.0	4.6
	<b>December</b>	<b>130</b>	<b>1,260</b>	<b>86.4</b>	<b>9.0</b>	<b>4.5</b>
<b>2011</b>	March	130	1,250	86.0	8.2	5.8
	June	130	1,244	86.4	8.8	4.7
	September	130	1,251	84.9	11.5	3.6
	<b>December</b>	<b>130</b>	<b>1,241</b>	<b>85.9</b>	<b>9.1</b>	<b>5.0</b>
<b>2012</b>	March	130	1,250	86.2	5.7	8.2
	June	130	1,236	86.7	7.3	6.0
	September	130	1,240	85.9	9.5	4.6
	<b>December</b>	<b>130</b>	<b>1,246</b>	<b>85.6</b>	<b>7.9</b>	<b>6.6</b>
<b>2013</b>	March	130	1,238	85.3	6.9	7.8
	June	130	1,232	84.9	8.6	6.5
	September	130	1,240	83.6	10.9	5.5
	<b>December</b>	<b>130</b>	<b>1,236</b>	<b>84.4</b>	<b>11.1</b>	<b>4.5</b>
<b>2014</b>	March	130	1,228	84.0	9.9	6.1
	June	130	1,228	82.6	13.7	3.7
	September	130	1,227	80.0	17.2	2.9
	<b>December</b>	<b>130</b>	<b>1,227</b>	<b>85.7</b>	<b>10.0</b>	<b>4.2</b>
<b>2015</b>	March	130	1,224	86.2	9.0	4.8
	June	130	1,229	86.7	9.6	3.7
	September	130	1,220	86.1	10.9	3.0
	<b>December</b>	<b>130</b>	<b>1,223</b>	<b>87.7</b>	<b>8.1</b>	<b>4.3</b>
<b>2016</b>	March	130	1,225	85.8	6.2	8.0
	June	130	1,220	83.8	9.3	6.9
	September	130	1,220	83.4	11.5	5.1
	<b>December</b>	<b>130</b>	<b>1,218</b>	<b>87.2</b>	<b>7.2</b>	<b>5.6</b>
<b>2017</b>	March	130	1,225	88.0	5.6	6.4
	June	130	1,216	88.7	5.9	5.4
	September	130	1,223	84.9	11.1	4.0
	<b>December</b>	<b>130</b>	<b>1,223</b>	<b>86.9</b>	<b>9.2</b>	<b>3.9</b>
<b>2018</b>	March	130	1,223	87.2	7.4	5.5

<sup>^</sup> This table summarises the aggregate outcomes of statistical tests for significant upward or downward trends in the number of recorded criminal incidents in major offence categories over a 24-month period across all NSW LGAs with a population of 3,000 or more. The trend test used is Kendall's rank-order correlation test. A trend test was not performed if there were fewer than 20 incidents in either of the two years for the period in question, hence no trend tests for **murder** were calculated for this table. These tests were carried out on 17 major offence categories.

**FIGURE 2.1A: NUMBER OF NSW LGAs WITH SIGNIFICANT UPWARD TRENDS<sup>^</sup>, MAJOR OFFENCES, APR 15 TO MAR 17 and APR 16 TO MAR 18**



**FIGURE 2.1B: NUMBER OF NSW LGAs WITH SIGNIFICANT DOWNWARD TRENDS<sup>^</sup>, MAJOR OFFENCES, APR 15 TO MAR 17 and APR 16 TO MAR 18**



<sup>^</sup> For further explanation of trend results, see page 42, Notes [5] and 6.

---

**SECTION 3:**

**TRENDS, RATE COMPARISONS AND  
RECORDED CRIMINAL INCIDENTS  
FOR MAJOR OFFENCES  
NSW REGIONS AND LGAS**

---

**TABLE 3.1A: TRENDS<sup>^</sup> IN RECORDED CRIMINAL INCIDENTS FOR MAJOR OFFENCES OVER THE 24 MONTHS TO MARCH 2018, NSW SAs**

<b>NSW Statistical Area</b>	Murder *	Domestic violence related assault	Non-domestic violence related assault	Sexual assault	Indecent assault, act of indecency and other sexual offences	Robbery without a weapon	Robbery with a firearm	Robbery with a weapon not a firearm	Break and enter dwelling	Break and enter non-dwelling	Motor vehicle theft	Steal from motor vehicle	Steal from retail store	Steal from dwelling	Steal from person	Fraud	Malicious damage to property
Greater Sydney	ns	ns	ns	10.7	7.5	ns	ns	ns	-5.1	-9.5	ns	ns	ns	-10.3	ns	-5.3	ns
Capital Region		6.4	ns	ns	ns				ns	ns	ns	ns	ns	ns	ns	ns	ns
Central West		7.1	ns	ns	ns				-26.3	-18.4	ns	ns	ns	ns	ns	ns	ns
Coffs Harbour - Grafton		ns	16.2	ns	ns				ns	ns	27.9	ns	-21.7	ns	ns	ns	ns
Far West and Orana		8.2	ns	ns	ns				-26.7	ns	-33.6	-24.4	-28.4	-23.7	ns	ns	ns
Hunter Valley excluding Newcastle		ns	ns	ns	ns	ns		ns	ns	ns	ns	-17.3	ns	ns	ns	ns	ns
Illawarra		ns	ns	ns	ns	ns		100.0	ns	-28.1	ns	ns	ns	ns	ns	ns	ns
Mid North Coast		ns	ns	ns	ns			ns	1.3	ns	ns	11.8	30.4	14.7	ns	8.9	ns
Murray		ns	ns	ns	ns				ns	ns	ns	ns	ns	ns	ns	ns	ns
New England and North West		ns	5.5	ns	ns	ns		ns	ns	ns	ns	ns	ns	ns	ns	ns	ns
Newcastle and Lake Macquarie		ns	ns	18.2	ns	-40.2		ns	ns	ns	ns	ns	ns	ns	ns	ns	ns
Richmond - Tweed		ns	4.9	ns	ns	ns			ns	ns	ns	ns	ns	ns	ns	-17.1	ns
Riverina		ns	ns	ns	ns				ns	ns	ns	ns	ns	-17.8	ns	ns	ns
Southern Highlands and Shoalhaven		ns	ns	ns	ns				ns	-27.8	ns	-18.3	ns	-29.5		ns	ns
<b>NSW</b>	ns	ns	ns	7.2	6.3	ns	ns	ns	ns	-10.0	ns	-3.3	ns	ns	ns	-3.5	ns

<sup>^</sup> For further explanation of **trend results**, see page 42, Notes [5] and [6].

\* The trend test for Greater Sydney and NSW on the offence of murder is for the number of victims, not incidents.

**TABLE 3.1B: RATIO TO NSW RATE<sup>^</sup> OF RECORDED CRIMINAL INCIDENTS PER 100,000 POPULATION FOR MAJOR OFFENCES OVER THE 12 MONTHS TO MARCH 2018, NSW SAs**

<b>NSW Statistical Area</b>	Murder *	Domestic violence related assault	Non-domestic violence related assault	Sexual assault	Indecent assault, act of indecency and other sexual offences	Robbery without a weapon	Robbery with a firearm	Robbery with a weapon not a firearm	Break and enter dwelling	Break and enter non-dwelling	Motor vehicle theft	Steal from motor vehicle	Steal from retail store	Steal from dwelling	Steal from person	Fraud	Malicious damage to property
Greater Sydney	0.9	0.9	0.9	0.8	0.8	1.2	1.1	1.0	0.8	0.7	0.8	0.9	1.0	0.8	1.2	1.1	0.8
Capital Region	0.7	0.9	0.9	1.3	1.0	0.2	0.0	0.4	0.8	1.0	0.8	0.8	0.8	1.0	0.2	0.6	1.1
Central West	2.1	1.4	1.2	1.7	1.6	0.5	0.6	0.7	1.4	1.6	1.1	0.9	0.8	1.4	0.5	0.8	1.5
Coffs Harbour - Grafton	0.0	1.5	1.4	1.5	1.6	0.6	0.9	1.3	1.4	2.0	1.3	0.9	0.7	1.5	0.9	0.9	1.2
Far West and Orana	1.3	2.9	2.0	2.0	2.4	0.7	0.0	1.0	3.2	2.9	1.8	2.0	1.3	2.1	0.9	0.9	2.5
Hunter Valley excluding Newcastle	0.0	1.4	1.0	1.4	1.3	0.4	1.1	0.8	1.4	1.8	1.7	1.2	1.0	1.4	0.5	0.9	1.3
Illawarra	0.5	0.8	0.8	1.0	0.8	0.9	1.8	1.3	0.9	1.0	1.1	1.2	1.2	1.0	0.6	0.6	1.0
Mid North Coast	0.0	1.2	1.1	1.4	1.4	1.0	0.3	1.1	1.3	2.1	1.1	0.9	1.0	1.7	0.7	0.7	1.3
Murray	2.5	1.1	1.1	1.1	1.1	0.6	1.0	0.3	1.4	1.8	1.2	1.5	0.9	1.4	0.5	0.7	1.4
New England and North West	3.2	1.7	1.7	1.6	1.5	1.2	1.0	1.4	2.5	2.5	1.5	1.6	1.4	2.1	0.7	0.8	2.1
Newcastle and Lake Macquarie	0.4	1.1	1.2	1.4	1.3	0.7	1.1	1.3	1.3	1.5	1.7	1.8	1.4	1.4	1.1	1.3	1.5
Richmond - Tweed	1.8	0.9	1.2	1.2	1.2	0.5	1.0	0.6	0.9	1.2	1.1	1.0	0.7	1.1	0.8	0.7	1.1
Riverina	2.8	1.6	1.3	1.4	1.2	0.6	0.0	1.6	2.3	2.1	1.4	1.5	1.2	1.6	0.5	0.7	1.6
Southern Highlands and Shoalhaven	1.0	0.8	0.8	1.3	1.2	0.4	0.8	0.3	0.9	0.9	0.7	0.6	0.9	0.7	0.2	0.6	1.0
<b>NSW</b>	1.0	1.0	1.0	1.0	1.0	1.0	1.0	1.0	1.0	1.0	1.0	1.0	1.0	1.0	1.0	1.0	1.0

<sup>^</sup> For further explanation of **rate calculation populations** and the **ratio to NSW rate**, see page 42, Footnote 2 and Note [8].

\* The rate calculations on the offence of murder is for the number of victims, not incidents.

**TABLE 3.1C: NUMBER OF RECORDED CRIMINAL INCIDENTS FOR MAJOR OFFENCES, OVER THE 12 MONTHS TO MARCH 2018, NSW SAs**

<i>NSW Statistical Area</i>	Murder *	Domestic violence related assault	Non-domestic violence related assault	Sexual assault	Indecent assault, act of indecency and other sexual offences	Robbery without a weapon	Robbery with a firearm	Robbery with a weapon not a firearm	Break and enter dwelling	Break and enter non-dwelling	Motor vehicle theft	Steal from motor vehicle	Steal from retail store	Steal from dwelling	Steal from person	Fraud	Malicious damage to property
Greater Sydney	30	15,946	17,986	2,936	4,109	1,130	93	586	13,955	4,441	7,126	22,282	15,713	10,019	3,517	34,998	31,132
Capital Region	1	729	835	219	219	10	0	11	632	285	307	942	542	538	24	781	1,837
Central West	3	1,113	1,078	265	320	18	2	16	1,046	452	375	997	532	719	64	1,040	2,447
Coffs Harbour - Grafton	0	740	831	156	216	16	2	21	680	377	307	662	314	534	73	807	1,312
Far West and Orana	1	1,247	988	176	268	15	0	14	1,307	457	356	1,189	486	604	62	629	2,301
Hunter Valley excluding Newcastle	0	1,369	1,120	289	332	22	5	24	1,306	631	746	1,626	817	968	83	1,455	2,769
Illawarra	1	883	1,062	226	230	51	9	46	955	400	553	1,805	1,118	747	99	1,176	2,382
Mid North Coast	0	948	968	218	297	41	1	27	1,003	616	401	936	682	912	90	977	2,240
Murray	2	477	536	98	125	13	2	4	566	281	227	893	336	426	32	513	1,280
New England and North West	4	1,164	1,277	223	269	41	3	30	1,611	618	464	1,465	795	966	81	952	3,058
Newcastle and Lake Macquarie	1	1,478	1,769	383	484	49	7	54	1,675	726	1,084	3,363	1,610	1,295	233	2,942	4,227
Richmond - Tweed	3	823	1,191	211	283	25	4	18	804	402	450	1,190	533	693	121	1,068	2,034
Riverina	3	906	847	165	183	19	0	29	1,312	450	384	1,221	596	620	48	655	2,033
Southern Highlands and Shoalhaven	1	438	523	143	180	11	2	6	463	190	179	481	434	273	22	552	1,192
<b>NSW</b>	<b>52</b>	<b>28,268</b>	<b>32,156</b>	<b>5,764</b>	<b>7,545</b>	<b>1,464</b>	<b>130</b>	<b>886</b>	<b>27,315</b>	<b>10,328</b>	<b>12,960</b>	<b>39,053</b>	<b>24,508</b>	<b>19,314</b>	<b>4,549</b>	<b>48,554</b>	<b>60,330</b>

\* For murder the count given is for the number of victims, not incidents.

**TABLE 3.1D: NUMBER OF RECORDED CRIMINAL INCIDENTS FOR MAJOR OFFENCES, OVER THE 12 MONTHS TO MARCH 2017, NSW SAs**

<i>NSW Statistical Area</i>	Murder *	Domestic violence related assault	Non-domestic violence related assault	Sexual assault	Indecent assault, act of indecency and other sexual offences	Robbery without a weapon	Robbery with a firearm	Robbery with a weapon not a firearm	Break and enter dwelling	Break and enter non-dwelling	Motor vehicle theft	Steal from motor vehicle	Steal from retail store	Steal from dwelling	Steal from person	Fraud	Malicious damage to property
Greater Sydney	46	16,313	17,878	2,653	3,821	1,063	109	526	14,702	4,906	7,269	22,292	15,070	11,172	3,691	36,952	32,778
Capital Region	0	685	808	169	203	15	2	5	645	331	277	1,041	489	484	34	781	1,819
Central West	4	1,039	1,155	234	301	22	7	20	1,420	554	438	1,338	678	825	70	1,108	2,678
Coffs Harbour - Grafton	0	767	715	165	176	15	1	18	579	358	240	651	401	519	63	666	1,432
Far West and Orana	4	1,152	1,001	231	226	20	4	20	1,783	640	536	1,572	679	792	82	622	2,383
Hunter Valley excluding Newcastle	1	1,392	1,096	240	296	21	7	31	1,399	680	821	1,965	725	1,133	89	1,253	2,700
Illawarra	1	1,003	1,084	200	244	48	9	23	1,078	556	555	1,992	1,117	788	91	1,189	2,372
Mid North Coast	1	1,017	1,006	242	303	15	2	29	990	665	387	837	523	795	67	897	2,184
Murray	3	515	486	113	152	16	4	7	595	353	216	804	376	483	28	483	1,244
New England and North West	2	1,272	1,211	237	271	26	2	32	1,722	681	417	1,478	713	1,033	62	954	3,043
Newcastle and Lake Macquarie	2	1,535	1,817	324	445	82	13	53	1,693	626	1,052	3,365	1,465	1,349	245	2,850	4,173
Richmond - Tweed	4	913	1,135	237	316	26	1	17	868	453	435	1,257	600	686	121	1,288	2,146
Riverina	2	942	843	154	168	20	1	17	1,298	409	309	1,184	609	754	43	671	2,007
Southern Highlands and Shoalhaven	0	493	538	123	152	8	1	13	497	263	206	589	341	387	17	590	1,220
<b>NSW</b>	<b>71</b>	<b>29,043</b>	<b>31,874</b>	<b>5,376</b>	<b>7,100</b>	<b>1,400</b>	<b>163</b>	<b>813</b>	<b>29,269</b>	<b>11,479</b>	<b>13,159</b>	<b>40,366</b>	<b>23,786</b>	<b>21,200</b>	<b>4,703</b>	<b>50,318</b>	<b>62,310</b>

\* For murder the count given is for the number of victims, not incidents.

**TABLE 3.2A: TRENDS<sup>^</sup> IN RECORDED CRIMINAL INCIDENTS FOR MAJOR OFFENCES OVER THE 24 MONTHS TO MARCH 2018, GREATER SYDNEY SAs**

Greater Sydney Statistical Area	Murder *	Domestic violence related assault	Non-domestic violence related assault	Sexual assault	Indecent assault, act of indecency and other sexual offences	Robbery without a weapon	Robbery with a firearm	Robbery with a weapon not a firearm	Break and enter dwelling	Break and enter non-dwelling	Motor vehicle theft	Steal from motor vehicle	Steal from retail store	Steal from dwelling	Steal from person	Fraud	Malicious damage to property
Baulkham Hills and Hawkesbury	.	ns	ns	26.7	ns	.	.	.	ns	-38.0	ns	ns	ns	ns	ns	ns	ns
Blacktown	.	ns	6.7	10.2	ns	ns	.	ns	ns	ns	ns	15.8	ns	ns	ns	ns	ns
Central Coast	.	ns	ns	ns	ns	ns	.	ns	-24.2	-20.3	ns	-24.0	ns	ns	ns	ns	-11.1
City and Inner South	.	ns	ns	28.0	49.2	ns	.	ns	ns	ns	ns	-15.4	ns	ns	ns	-14.5	ns
Eastern Suburbs	.	ns	ns	ns	ns	ns	.	.	-27.2	ns	ns	ns	ns	-26.6	ns	ns	ns
Inner South West	.	ns	ns	32.1	ns	ns	.	ns	ns	ns	ns	ns	ns	ns	ns	ns	ns
Inner West	.	ns	ns	ns	ns	40.9	.	ns	-17.5	ns	ns	ns	ns	-27.8	ns	-13.9	ns
North Sydney and Hornsby	.	ns	ns	ns	ns	ns	.	.	ns	ns	ns	ns	ns	ns	ns	ns	ns
Northern Beaches	.	ns	ns	ns	ns	ns	.	.	ns	ns	ns	ns	ns	ns	ns	ns	ns
Outer South West	.	ns	ns	ns	ns	ns	.	.	ns	ns	ns	ns	ns	ns	ns	-23.1	-14.1
Outer West and Blue Mountains	.	8.0	ns	ns	ns	ns	.	ns	10.3	ns	ns	ns	ns	ns	ns	ns	ns
Parramatta	.	ns	ns	ns	ns	ns	.	ns	-8.6	ns	ns	ns	ns	ns	ns	ns	ns
Ryde	.	ns	ns	37.7	39.1	.	.	.	ns	ns	ns	ns	41.8	ns	ns	ns	9.3
South West	.	ns	ns	ns	ns	23.2	.	ns	ns	ns	ns	-11.2	ns	-21.1	ns	ns	ns
Sutherland	.	ns	ns	ns	ns	.	.	.	ns	ns	ns	ns	ns	ns	ns	ns	ns

<sup>^</sup> For further explanation of **trend results**, see page 42, Notes [5] and [6].

**TABLE 3.2B: RATIO TO NSW RATE<sup>^</sup> OF RECORDED CRIMINAL INCIDENTS PER 100,000 POPULATION FOR MAJOR OFFENCES OVER THE 12 MONTHS TO MARCH 2018, GREATER SYDNEY SAs**

Greater Sydney Statistical Area	Murder *	Domestic violence related assault	Non-domestic violence related assault	Sexual assault	Indecent assault, act of indecency and other sexual offences	Robbery without a weapon	Robbery with a firearm	Robbery with a weapon not a firearm	Break and enter dwelling	Break and enter non-dwelling	Motor vehicle theft	Steal from motor vehicle	Steal from retail store	Steal from dwelling	Steal from person	Fraud	Malicious damage to property
Baulkham Hills and Hawkesbury	0.0	0.4	0.4	0.5	0.4	0.2	0.3	0.1	0.5	0.3	0.4	0.5	0.4	0.5	0.2	0.7	0.4
Blacktown	2.1	1.6	1.2	1.1	1.1	2.1	1.5	2.1	1.3	0.7	1.4	1.7	1.1	1.1	1.4	1.5	1.2
Central Coast	1.8	1.3	1.0	1.1	1.2	0.9	0.9	0.9	0.9	0.9	1.2	1.0	0.8	0.9	0.8	1.0	1.2
City and Inner South	1.3	1.1	2.7	1.3	2.0	3.3	2.3	2.3	0.8	1.4	1.0	1.0	3.3	1.5	6.6	2.6	1.3
Eastern Suburbs	1.0	0.6	0.9	0.7	0.7	0.9	1.0	0.5	0.6	0.4	0.7	0.6	1.1	0.9	1.1	1.0	0.7
Inner South West	1.5	0.8	0.6	0.6	0.5	1.1	0.9	0.9	0.6	0.5	0.9	0.8	0.5	0.5	0.5	0.9	0.7
Inner West	0.5	0.5	0.6	0.5	0.6	1.1	0.6	1.1	0.8	0.6	0.7	0.8	0.7	0.8	1.0	1.2	0.6
North Sydney and Hornsby	0.4	0.3	0.4	0.5	0.6	0.5	0.3	0.3	0.7	0.6	0.3	0.5	0.8	0.7	0.7	0.8	0.5
Northern Beaches	0.6	0.4	0.5	0.5	0.5	0.5	0.2	0.3	0.5	0.5	0.5	0.7	0.6	0.7	0.6	0.7	0.5
Outer South West	1.1	1.3	0.8	1.0	1.0	0.9	1.1	1.3	0.8	0.7	0.8	0.8	1.1	0.7	0.5	0.7	0.9
Outer West and Blue Mountains	0.5	1.4	1.0	1.3	1.2	1.2	0.6	1.1	1.0	0.8	1.2	1.1	1.1	1.0	0.9	1.2	1.2
Parramatta	0.6	1.0	0.9	0.8	0.8	1.9	2.3	1.2	1.0	0.7	1.0	1.2	0.9	0.9	1.3	1.3	0.7
Ryde	0.0	0.4	0.4	0.5	0.7	0.3	1.3	0.3	0.9	0.5	0.4	0.6	1.0	0.6	0.6	0.9	0.5
South West	0.4	1.0	0.8	0.7	0.9	1.5	2.1	1.6	0.9	0.7	1.0	0.9	0.8	0.6	0.8	1.1	0.8
Sutherland	0.7	0.6	0.6	0.5	0.5	0.3	0.0	0.2	0.5	0.4	0.5	0.7	0.8	0.6	0.5	0.6	0.7

<sup>^</sup> For further explanation of **rate calculation populations** and the **ratio to NSW rate**, see page 42, Footnote 2 and Note [8].

\* The rate calculations on the offence of murder is for the number of victims, not incidents.



**TABLE 3.2C: NUMBER OF RECORDED CRIMINAL INCIDENTS FOR MAJOR OFFENCES, OVER THE 12 MONTHS TO MARCH 2018, GREATER SYDNEY SAs**

Greater Sydney Statistical Area	Murder *	Domestic violence related assault	Non-domestic violence related assault	Sexual assault	Indecent assault, act of indecency and other sexual offences	Robbery without a weapon	Robbery with a firearm	Robbery with a weapon not a firearm	Break and enter dwelling	Break and enter non-dwelling	Motor vehicle theft	Steal from motor vehicle	Steal from retail store	Steal from dwelling	Steal from person	Fraud	Malicious damage to property
Baulkham Hills and Hawkesbury	0	339	360	95	93	10	1	4	442	103	163	644	318	279	34	970	664
Blacktown	5	2,009	1,706	282	362	138	9	83	1,549	348	805	2,937	1,267	934	285	3,387	3,296
Central Coast	4	1,620	1,461	282	399	58	5	36	1,047	384	677	1,613	828	765	163	2,169	3,042
City and Inner South	3	1,335	3,753	325	652	208	13	88	966	643	565	1,730	3,495	1,285	1,316	5,494	3,384
Eastern Suburbs	2	598	1,040	141	186	46	5	15	586	143	327	853	960	645	188	1,855	1,464
Inner South West	6	1,764	1,606	251	297	120	9	61	1,213	367	871	2,338	985	795	183	3,465	3,035
Inner West	1	587	730	117	181	62	3	39	843	244	359	1,169	712	583	179	2,258	1,503
North Sydney and Hornsby	1	456	667	155	242	38	2	17	1,013	348	238	1,134	1,111	717	163	2,059	1,645
Northern Beaches	1	381	572	100	122	24	1	8	450	188	218	917	493	437	90	1,176	1,106
Outer South West	2	1,247	846	210	264	45	5	41	753	249	381	1,085	937	498	80	1,245	1,957
Outer West and Blue Mountains	1	1,612	1,342	312	365	72	3	40	1,118	336	647	1,807	1,067	797	170	2,321	2,883
Parramatta	2	1,714	1,651	278	347	168	18	65	1,700	453	819	2,773	1,273	1,013	348	3,715	2,603
Ryde	0	268	320	73	121	10	4	7	613	136	132	534	577	281	65	1,113	811
South West	1	1,545	1,336	227	370	117	15	77	1,290	384	718	1,982	1,095	676	190	2,897	2,503
Sutherland	1	471	596	88	108	14	0	5	372	115	206	766	595	314	63	874	1,236

\* For murder the count given is for the number of victims, not incidents.

**TABLE 3.2D: NUMBER OF RECORDED CRIMINAL INCIDENTS FOR MAJOR OFFENCES, OVER THE 12 MONTHS TO MARCH 2017, GREATER SYDNEY SAs**

Greater Sydney Statistical Area	Murder *	Domestic violence related assault	Non-domestic violence related assault	Sexual assault	Indecent assault, act of indecency and other sexual offences	Robbery without a weapon	Robbery with a firearm	Robbery with a weapon not a firearm	Break and enter dwelling	Break and enter non-dwelling	Motor vehicle theft	Steal from motor vehicle	Steal from retail store	Steal from dwelling	Steal from person	Fraud	Malicious damage to property
Baulkham Hills and Hawkesbury	1	307	336	75	125	13	0	5	545	166	185	559	296	299	50	1,016	715
Blacktown	4	2,092	1,599	256	333	183	12	61	1,601	344	813	2,536	1,108	1,033	286	2,889	3,466
Central Coast	2	1,745	1,458	288	388	36	6	25	1,381	482	740	2,123	935	804	154	2,087	3,421
City and Inner South	5	1,320	3,566	254	437	218	14	86	1,015	657	563	2,045	3,118	1,396	1,412	6,425	3,579
Eastern Suburbs	0	647	1,020	118	193	38	3	30	805	177	374	985	984	879	225	1,906	1,584
Inner South West	12	2,119	1,596	190	303	114	13	53	1,160	354	910	2,240	969	900	190	3,879	3,221
Inner West	2	529	787	107	188	44	2	24	1,022	276	351	1,379	727	808	153	2,623	1,563
North Sydney and Hornsby	0	457	704	127	212	29	1	10	959	398	216	994	1,085	691	135	2,121	1,685
Northern Beaches	3	323	629	93	108	26	0	4	459	227	191	820	588	448	91	1,217	1,178
Outer South West	0	1,207	943	245	298	54	9	19	886	301	427	1,254	949	568	115	1,618	2,277
Outer West and Blue Mountains	3	1,492	1,330	280	353	68	8	46	1,014	464	639	1,564	1,044	845	195	2,264	2,865
Parramatta	5	1,648	1,629	241	338	120	29	77	1,859	481	758	2,404	1,175	1,029	359	3,837	2,808
Ryde	1	270	343	53	87	11	1	5	476	113	127	563	407	317	46	1,112	742
South West	6	1,664	1,351	233	308	95	10	70	1,199	344	786	2,232	1,159	857	209	3,069	2,388
Sutherland	2	493	587	93	150	14	1	11	321	122	189	594	526	298	71	889	1,286

\* For murder the count given is for the number of victims, not incidents.



**TABLE 3.3A: TRENDS\* IN RECORDED CRIMINAL INCIDENTS FOR MAJOR OFFENCES  
OVER THE 24 MONTHS TO MARCH 2018, NSW LGAs**

NSW LGA	Murder*	Domestic violence related assault	Non-domestic violence related assault	Sexual assault	Indecent assault, act of indecency and other sexual offences	Robbery without a weapon	Robbery with a firearm	Robbery with a weapon not a firearm	Break and enter dwelling	Break and enter non-dwelling	Motor vehicle theft	Steal from motor vehicle	Steal from retail store	Steal from dwelling	Steal from person	Fraud	Malicious damage to property
Lane Cove	.	ns	ns	.	.	.	.	.	ns	ns	ns	ns	.	ns	.	ns	ns
Leeton	.	23.6	ns	.	.	.	.	.	ns	ns	ns	ns	ns	ns	.	ns	ns
Lismore	.	ns	ns	ns	ns	.	.	.	ns	ns	ns	ns	-29.8	ns	.	-40.2	ns
Lithgow	.	ns	ns	.	.	.	.	.	-24.1	-36.2	ns	ns	ns	ns	.	ns	ns
Liverpool	.	ns	ns	ns	ns	ns	.	ns	ns	ns	ns	ns	-13.9	-23.3	ns	-9.9	ns
Liverpool Plains	.	ns	ns	.	.	.	.	.	ns	ns	.	.	.	ns	.	ns	35.2
Lockhart	.	.	.	.	.	.	.	.	.	.	.	.	.	.	.	.	.
Lord Howe Island	.	.	.	.	.	.	.	.	.	.	.	.	.	.	.	.	.
Maitland	.	ns	18.4	ns	ns	.	.	.	ns	ns	ns	-20.9	ns	ns	ns	42.7	6.7
Mid-Coast	.	ns	ns	ns	ns	.	.	.	ns	ns	ns	32.5	44.0	23.0	ns	18.2	ns
Mid-Western Regional	.	ns	ns	ns	ns	.	.	.	ns	ns	ns	ns	ns	ns	.	ns	ns
Moree Plains	.	ns	ns	ns	ns	.	.	.	ns	ns	ns	ns	ns	ns	.	ns	ns
Mosman	.	ns	ns	.	.	.	.	.	ns	.	.	ns	ns	ns	.	ns	ns
Murray River	.	.	ns	.	.	.	.	.	ns	-43.4	.	ns	.	ns	.	ns	ns
Murrumbidgee	.	ns	.	.	.	.	.	.	.	.	.	.	.	.	.	.	ns
Muswellbrook	.	ns	ns	.	ns	.	.	.	ns	ns	ns	ns	-46.3	ns	.	ns	ns
Nambucca	.	ns	ns	ns	ns	.	.	.	48.9	93.2	ns	ns	ns	ns	.	ns	ns
Narrabri	.	ns	ns	.	.	.	.	.	-39.1	ns	ns	ns	-43.2	ns	.	ns	ns
Narrandera	.	ns	ns	.	.	.	.	.	ns	ns	.	ns	ns	ns	.	.	ns
Narromine	.	40.0	ns	.	.	.	.	.	-38.7	ns	.	ns	.	ns	.	ns	ns
Newcastle	.	ns	ns	ns	ns	ns	.	ns	ns	ns	ns	ns	ns	ns	ns	ns	ns
North Sydney	.	ns	ns	ns	ns	.	.	.	ns	ns	ns	ns	ns	ns	ns	ns	ns
Northern Beaches	.	ns	ns	ns	ns	ns	.	.	ns	ns	ns	ns	ns	ns	ns	ns	ns
Oberon	.	.	.	.	.	.	.	.	.	.	.	.	.	.	.	.	ns
Orange	.	ns	ns	ns	ns	.	.	.	ns	ns	ns	ns	ns	ns	.	ns	ns
Parkes	.	ns	ns	ns	ns	.	.	.	-41.5	ns	ns	ns	-56.4	ns	.	ns	-19.4
Parramatta	.	ns	ns	ns	ns	ns	.	ns	ns	ns	ns	27.0	ns	ns	ns	-7.4	ns
Penrith	.	9.0	ns	ns	ns	ns	.	ns	14.0	ns	ns	32.9	ns	ns	ns	ns	ns
Port Macquarie-Hastings	.	ns	ns	ns	ns	.	.	.	ns	65.7	ns	ns	ns	ns	ns	ns	28.9
Port Stephens	.	ns	ns	-13.7	ns	.	.	.	-29.4	ns	ns	-17.5	ns	ns	.	ns	ns
Queanbeyan-Palerang Regional	.	ns	ns	ns	ns	.	.	.	ns	ns	ns	ns	ns	ns	.	ns	ns
Randwick	.	ns	ns	ns	-2.0	ns	.	.	-18.4	ns	ns	ns	14.5	-28.4	ns	ns	ns
Richmond Valley	.	ns	ns	ns	ns	.	.	.	-30.6	ns	ns	ns	ns	ns	.	ns	-38.7
Ryde	.	ns	ns	ns	ns	.	.	.	ns	ns	ns	ns	46.0	ns	ns	ns	ns
Shellharbour	.	ns	-25.2	ns	ns	.	.	.	ns	-46.8	ns	ns	ns	ns	.	ns	ns
Shoalhaven	.	ns	ns	ns	ns	.	.	.	ns	ns	ns	ns	ns	ns	.	ns	ns
Singleton	.	ns	ns	ns	ns	.	.	.	ns	ns	ns	ns	ns	ns	.	78.3	ns
Snowy Monaro Regional	.	ns	ns	ns	.	.	.	.	ns	.	.	ns	.	ns	.	ns	ns
Snowy Valleys	.	ns	ns	.	.	.	.	.	ns	ns	.	ns	ns	ns	.	ns	ns
Strathfield	.	40.2	ns	.	ns	.	.	.	-20.1	-44.2	-37.6	ns	ns	-54.5	ns	ns	ns
Sutherland Shire	.	ns	ns	ns	ns	.	.	.	ns	ns	ns	ns	ns	ns	ns	ns	ns
Sydney	.	ns	ns	29.2	58.5	ns	.	ns	ns	ns	ns	-22.0	ns	ns	ns	-15.0	ns
Tamworth Regional	.	ns	11.6	ns	ns	.	.	.	ns	ns	ns	34.2	ns	-15.9	ns	ns	ns
Temora	.	.	ns	.	.	.	.	.	ns	.	.	.	.	.	.	.	ns
Tenterfield	.	ns	ns	.	.	.	.	.	-57.6	.	.	.	.	ns	.	ns	ns
The Hills Shire	.	ns	ns	ns	ns	.	.	.	ns	-47.1	ns	ns	ns	ns	ns	ns	ns
Tweed	.	ns	ns	ns	ns	.	.	.	ns	ns	ns	ns	ns	ns	ns	ns	ns
Unincorporated Far West	.	.	.	.	.	.	.	.	.	.	.	.	.	.	.	.	.
Upper Hunter Shire	.	ns	ns	.	.	.	.	.	ns	ns	-11.1	ns	.	ns	.	ns	-26.9
Upper Lachlan Shire	.	.	.	.	.	.	.	.	.	.	.	.	.	.	.	.	ns
Uralla	.	.	.	.	.	.	.	.	.	.	.	.	.	.	.	.	ns
Wagga Wagga	.	ns	ns	ns	ns	.	.	.	ns	33.9	ns	-21.2	ns	ns	ns	ns	ns
Walcha	.	.	.	.	.	.	.	.	.	.	.	.	.	.	.	.	.
Walgett	.	ns	24.4	.	.	.	.	.	ns	ns	.	ns	.	ns	.	ns	ns
Warren	.	ns	ns	.	.	.	.	.	.	.	.	ns	.	.	.	.	51.1
Warrumbungle Shire	.	ns	ns	.	.	.	.	.	ns	.	.	ns	.	ns	.	ns	ns
Waverley	.	ns	ns	ns	ns	.	.	.	-39.4	.	ns	ns	ns	ns	ns	ns	ns
Weddin	.	.	.	.	.	.	.	.	.	.	.	.	.	.	.	.	ns
Wentworth	.	ns	78.4	.	.	.	.	.	ns	ns	ns	ns	.	ns	.	.	36.7
Willoughby	.	49.2	ns	ns	ns	.	.	.	ns	-24.3	ns	ns	ns	ns	ns	ns	ns
Wingecarribee	.	ns	ns	ns	ns	.	.	.	ns	-45.6	ns	ns	ns	-51.9	.	ns	ns
Wollondilly	.	ns	ns	ns	ns	.	.	.	ns	ns	ns	ns	.	ns	.	ns	ns
Wollongong	.	ns	6.7	ns	ns	ns	.	.	ns	ns	ns	ns	ns	ns	ns	ns	ns
Woollahra	.	ns	ns	ns	ns	.	.	.	-34.3	ns	ns	ns	ns	ns	ns	ns	ns
Yass Valley	.	ns	ns	.	.	.	.	.	ns	.	.	ns	.	.	.	.	ns
<b>NSW</b>	<b>ns</b>	<b>ns</b>	<b>ns</b>	<b>7.2</b>	<b>6.3</b>	<b>ns</b>	<b>ns</b>	<b>ns</b>	<b>ns</b>	<b>-10.0</b>	<b>ns</b>	<b>-3.3</b>	<b>ns</b>	<b>ns</b>	<b>ns</b>	<b>-3.5</b>	<b>ns</b>

^ For further explanation of trend results, see page 42, Notes [5] and [6].

\* There were no LGAs with 20 murder victims, hence no trend tests were reported. The trend test for NSW on the offence of murder is for the number of victims, not incidents.

**TABLE 3.3B: RATIO NSW RATE OF RECORDED CRIMINAL INCIDENTS PER 100,000 POPULATION FOR MAJOR OFFENCES OVER THE 12 MONTHS TO MARCH 2018, NSW LGAs**

NSW LGA	Murder *	Domestic violence related assault	Non-domestic violence related assault	Sexual assault	Indecent assault, act of indecency and other sexual offences	Robbery without a weapon	Robbery with a firearm	Robbery with a weapon not a firearm	Break and enter dwelling	Break and enter non-dwelling	Motor vehicle theft	Steal from motor vehicle	Steal from retail store	Steal from dwelling	Steal from person	Fraud	Malicious damage to property
Albury	.	1.4	1.5	1.3	1.3	1.0	2.3	0.7	1.9	1.7	1.6	2.4	1.6	1.9	0.8	1.0	1.7
Armidale Regional	4.9	1.7	1.5	1.2	1.0	1.6	.	1.7	2.7	1.8	1.3	1.7	1.9	2.1	1.2	1.0	2.1
Ballina	.	0.6	1.1	0.8	0.8	0.6	.	0.8	0.7	1.5	0.9	1.2	0.7	1.1	0.6	0.7	1.0
Balranald	.	.	.	.	.	.	.	.	.	.	.	.	.	.	.	.	.
Bathurst Regional	.	1.5	1.3	1.8	1.5	0.7	2.8	1.2	1.4	1.2	0.9	1.1	0.9	1.2	1.0	0.9	1.6
Bayside	0.9	0.9	0.7	0.7	0.5	1.0	1.1	0.9	0.6	0.5	0.8	0.8	0.8	0.7	0.9	0.9	0.7
Bega Valley	.	0.8	0.8	1.1	1.2	0.2	.	.	0.5	1.1	0.5	0.7	0.5	0.8	0.3	0.5	1.0
Bellingen	.	0.8	0.8	0.9	0.7	.	.	.	0.6	1.6	1.2	0.6	0.1	0.9	0.7	0.4	0.8
Berrigan	.	0.5	0.4	0.9	0.6	.	.	.	0.6	1.3	0.2	0.5	0.2	0.8	.	0.3	0.6
Blacktown	2.1	1.6	1.2	1.1	1.1	2.0	1.5	2.0	1.2	0.7	1.4	1.7	1.1	1.1	1.4	1.5	1.2
Bland	.	1.0	0.6	2.0	1.7	.	.	.	0.6	1.1	1.5	0.8	0.3	0.4	.	0.6	0.7
Blayney	.	1.4	0.7	1.3	1.8	.	.	.	0.7	1.6	1.0	0.7	0.1	0.4	0.5	0.2	0.8
Blue Mountains	.	0.9	0.7	1.3	0.9	0.7	.	0.4	0.6	0.5	0.5	0.5	0.3	0.7	0.5	0.7	1.1
Bogan	.	.	.	.	.	.	.	.	.	.	.	.	.	.	.	.	.
Bourke	.	.	.	.	.	.	.	.	.	.	.	.	.	.	.	.	.
Brewarrina	.	3.0	2.1	1.1	2.2	1.2	.	1.0	3.2	2.0	1.2	1.8	0.6	2.4	0.4	0.5	2.4
Broken Hill	.	.	.	.	.	.	.	.	.	.	.	.	.	.	.	.	.
Burwood	3.9	0.5	0.9	0.4	0.7	3.0	.	1.6	0.7	0.7	0.6	0.7	2.4	0.7	1.8	1.7	0.5
Byron	4.5	0.8	2.0	1.3	1.7	1.0	.	0.5	1.0	1.4	1.1	1.2	0.9	1.3	2.6	0.8	1.3
Cabonne	.	0.6	0.3	1.1	0.8	.	.	.	0.7	1.3	0.6	0.4	0.1	0.7	.	0.5	0.3
Camden	.	1.2	0.5	0.6	1.0	0.2	0.7	0.5	0.6	0.5	0.7	0.6	0.5	0.5	0.1	0.7	0.7
Campbelltown	1.8	1.4	1.0	1.3	1.2	1.3	1.5	1.9	1.0	0.8	1.0	1.0	1.6	1.0	0.8	0.8	1.1
Canada Bay	.	0.3	0.3	0.4	0.5	0.6	0.6	0.7	0.8	0.6	0.8	0.7	0.3	0.7	0.5	0.9	0.5
Canterbury-Bankstown	1.6	0.9	0.7	0.6	0.5	1.2	1.5	1.1	0.6	0.5	1.1	0.9	0.5	0.6	0.5	1.0	0.7
Carrathool	.	.	.	.	.	.	.	.	.	.	.	.	.	.	.	.	.
Central Coast	1.8	1.3	1.0	1.1	1.2	0.9	0.9	0.9	0.9	0.9	1.2	1.0	0.8	0.9	0.8	1.0	1.2
Central Darling	.	.	.	.	.	.	.	.	.	.	.	.	.	.	.	.	.
Cessnock	.	1.7	1.0	2.1	1.1	0.6	1.0	1.2	1.9	2.3	3.3	1.6	0.8	1.7	0.7	0.8	1.5
Clarence Valley	.	1.2	1.2	1.0	1.2	0.1	1.2	0.2	1.1	1.9	1.2	0.9	0.7	1.8	0.7	0.9	1.2
Cobar	.	1.8	2.1	1.1	3.4	.	.	.	1.5	2.2	2.1	1.9	0.1	0.7	.	0.5	2.3
Coffs Harbour	.	1.7	1.7	2.0	2.0	1.1	0.8	2.3	1.7	2.2	1.5	1.1	0.8	1.5	1.0	1.0	1.3
Coolamon	33.8	0.8	0.7	1.2	0.7	.	.	.	0.6	2.9	1.2	0.2	0.3	0.5	.	0.3	0.5
Coonamble	.	3.7	2.9	3.0	2.0	3.9	.	.	5.2	8.3	2.0	2.4	1.5	2.2	0.4	1.2	3.3
Cootamundra-Gundagai	.	1.3	1.0	1.2	1.1	.	.	0.8	1.1	0.7	0.9	0.4	0.6	1.1	0.2	1.4	1.3
Cowra	.	1.4	1.5	1.6	1.4	1.3	.	.	2.8	2.3	0.6	0.8	0.8	1.7	0.4	0.9	1.5
Cumberland	1.3	1.0	0.8	0.8	0.7	2.1	1.6	1.3	1.0	0.7	1.1	1.1	0.6	0.8	0.8	1.2	0.7
Dubbo Regional	.	2.1	1.9	2.0	2.4	0.5	.	1.5	3.2	2.1	2.3	2.4	1.9	1.9	1.3	1.2	2.5
Dungog	.	0.9	0.6	1.0	1.2	.	.	.	0.5	0.9	0.5	0.1	0.1	1.0	.	0.4	0.7
Edward River	.	1.2	1.0	1.7	1.4	.	.	.	1.1	1.7	0.1	0.9	0.9	1.3	0.4	0.5	1.5
Eurobodalla	.	1.2	1.3	1.2	1.1	0.4	.	0.7	1.3	1.4	1.0	0.9	0.6	1.2	0.3	0.6	1.3
Fairfield	.	1.0	0.8	0.7	0.7	1.6	2.3	1.9	0.7	0.6	1.0	0.8	0.6	0.5	0.7	1.0	0.7
Federation	12.0	0.6	0.6	0.6	1.2	.	.	.	0.9	2.1	0.7	0.7	0.3	1.5	0.3	0.5	1.1
Forbes	15.2	1.5	1.8	0.8	0.8	.	.	.	1.6	3.6	1.3	1.2	0.7	2.4	0.3	0.7	1.6
Georges River	1.0	0.7	0.6	0.4	0.5	1.0	.	0.6	0.4	0.4	0.6	0.5	0.6	0.4	0.7	0.9	0.6
Gilgandra	.	2.5	0.8	2.5	1.7	1.2	.	2.0	2.2	3.7	1.1	1.2	0.5	2.6	1.2	0.7	1.1
Glen Innes Severn	.	2.4	2.0	2.6	1.7	1.8	.	2.0	1.3	3.0	1.5	0.5	0.4	2.2	0.2	0.7	1.8
Goulburn Mulwaree	.	1.3	1.0	2.2	1.4	0.2	.	0.6	0.6	0.9	0.6	0.8	1.6	1.3	0.2	0.8	1.1
Greater Hume Shire	.	0.6	0.3	1.0	1.2	0.5	.	.	0.9	1.4	1.0	0.6	0.1	1.1	0.2	0.4	0.5
Griffith	.	2.0	1.3	1.1	0.6	1.2	.	3.0	1.6	2.4	1.6	2.4	1.4	1.4	0.5	0.6	1.9
Gunnedah	.	1.5	1.7	1.7	1.6	0.4	.	0.7	1.5	0.8	1.9	0.8	1.0	2.3	0.1	0.8	1.8
Gwydir	.	1.1	0.6	1.3	1.2	.	.	.	0.3	0.8	1.0	0.4	0.1	1.6	.	0.3	0.8
Hawkesbury	.	1.1	0.7	1.1	1.1	0.5	.	0.5	0.7	0.8	1.0	0.7	0.7	0.6	0.5	0.6	0.7
Hay	.	.	.	.	.	.	.	.	.	.	.	.	.	.	.	.	.
Hilltops	.	1.4	1.3	2.7	2.1	0.6	.	0.5	0.7	1.5	1.2	0.7	0.6	1.4	.	0.6	1.5
Hornsby	.	0.2	0.3	0.6	0.5	0.5	0.4	0.1	0.5	0.4	0.4	0.5	0.7	0.5	0.5	0.6	0.5
Hunters Hill	.	0.5	0.5	0.5	0.7	.	4.1	.	0.8	0.6	0.9	0.6	0.1	0.8	0.2	0.6	0.7
Inner West	0.8	0.6	0.8	0.6	0.8	1.1	1.6	1.1	0.7	0.7	0.8	0.8	0.6	0.9	1.0	1.1	0.9
Inverell	.	1.6	1.6	1.9	1.7	.	.	0.5	2.4	3.5	1.5	1.2	1.3	2.6	0.3	0.5	2.2
Juneë	.	0.6	0.6	1.0	0.6	.	.	.	0.9	1.7	0.7	1.0	0.1	1.2	.	0.1	0.9
Kempsey	.	2.2	1.6	1.9	1.6	2.0	2.0	1.8	2.7	2.3	2.0	1.0	1.7	2.4	1.6	0.6	1.5
Kiama	.	0.4	0.3	0.5	0.6	0.2	.	0.8	0.6	1.1	0.9	0.9	0.1	0.6	0.4	0.4	0.5
Ku-ring-gai	.	0.1	0.2	0.4	0.4	0.1	.	0.1	0.8	0.4	0.2	0.4	0.1	0.5	0.2	0.6	0.3
Kyogle	.	1.5	0.9	1.3	1.0	0.6	.	.	1.1	1.6	0.8	0.3	0.1	1.0	0.2	0.2	1.1
Lachlan	.	2.8	1.6	1.7	2.9	.	.	.	1.1	4.7	1.7	0.8	0.2	2.0	0.3	0.3	2.0
Lake Macquarie	.	1.1	0.8	1.3	1.1	0.5	0.9	0.9	0.9	1.2	1.6	1.2	1.1	1.0	0.6	1.0	1.2

**TABLE 3.3B: RATIO NSW RATE\* OF RECORDED CRIMINAL INCIDENTS PER 100,000 POPULATION FOR MAJOR OFFENCES OVER THE 12 MONTHS TO MARCH 2018, NSW LGAs**

NSW LGA	Murder*	Domestic violence related assault	Non-domestic violence related assault	Sexual assault	Indecent assault, act of indecency and other sexual offences	Robbery without a weapon	Robbery with a firearm	Robbery with a weapon not a firearm	Break and enter dwelling	Break and enter non-dwelling	Motor vehicle theft	Steal from motor vehicle	Steal from retail store	Steal from dwelling	Steal from person	Fraud	Malicious damage to property
Lane Cove	.	0.3	0.3	0.6	0.4	0.1	.	0.2	1.0	1.0	0.5	0.6	0.2	0.7	0.3	0.6	0.4
Leeton	13.0	1.6	1.3	2.4	2.1	.	.	2.3	2.1	2.4	1.6	1.0	0.8	1.3	0.3	0.6	1.2
Lismore	.	1.0	1.5	1.8	1.6	0.8	1.4	0.8	1.4	1.4	1.6	1.1	0.8	1.6	0.6	0.5	1.4
Lithgow	.	1.2	1.4	1.0	1.0	0.5	.	0.4	1.3	1.5	1.1	0.6	0.6	1.5	0.7	1.0	1.5
Liverpool	0.7	1.1	0.8	0.8	1.0	1.5	2.0	1.3	1.0	0.8	1.1	1.1	1.1	0.8	0.9	1.2	0.8
Liverpool Plains	.	1.3	1.3	0.5	2.1	.	.	.	0.9	2.5	1.1	0.3	0.2	1.8	.	0.4	1.9
Lockhart	.	1.3	0.8	1.3	0.6	.	.	.	0.7	0.9	0.6	0.2	.	0.6	.	0.2	0.7
Lord Howe Island	.	.	.	.	.	.	.	.	.	.	.	.	.	.	.	.	.
Maitland	.	1.6	1.1	1.2	1.3	0.6	1.5	1.0	1.4	1.6	1.6	1.6	1.5	1.7	0.8	1.0	1.4
Mid-Coast	.	1.2	1.1	1.4	1.6	1.1	.	0.9	1.4	2.0	1.1	0.8	0.8	1.9	0.6	0.7	1.4
Mid-Western Regional	6.1	1.4	1.1	2.0	1.3	0.2	.	.	0.9	0.7	0.7	0.8	0.4	1.4	0.3	0.6	1.5
Moree Plains	.	4.0	3.4	3.5	2.5	5.8	8.8	7.7	7.1	11.0	5.4	4.3	4.1	4.2	2.5	1.1	5.8
Mosman	.	0.5	0.3	0.6	0.6	0.3	.	0.3	0.6	0.5	0.5	0.5	0.3	0.8	0.3	0.6	0.5
Murray River	.	0.3	0.5	0.3	0.2	.	.	.	0.6	1.9	0.6	0.9	0.4	0.7	0.1	0.4	0.7
Murrumbidgee	.	1.7	1.0	1.0	1.8	.	.	.	0.9	1.5	0.9	0.4	0.2	0.9	.	0.3	1.1
Muswellbrook	.	1.6	1.5	2.0	1.5	1.3	3.6	2.1	2.7	2.9	1.1	1.2	0.8	1.5	0.7	0.5	1.7
Nambucca	.	1.4	1.2	1.7	2.3	0.3	.	0.9	1.9	4.4	1.3	1.5	1.1	1.5	0.5	0.8	1.7
Narrabri	11.0	1.7	1.5	1.3	0.8	0.4	.	.	1.2	1.4	1.1	1.2	0.5	1.8	0.3	0.9	1.6
Narrandera	.	1.4	1.2	1.6	1.5	.	.	2.9	3.9	8.2	2.2	1.8	1.2	1.4	.	0.5	1.7
Narromine	.	2.6	1.4	1.2	2.8	1.6	.	.	2.4	6.4	1.5	1.8	0.4	2.6	1.0	0.5	1.9
Newcastle	0.9	1.1	1.6	1.6	1.6	1.0	1.5	1.8	1.8	1.9	1.9	2.6	1.8	1.9	1.7	1.6	1.8
North Sydney	.	0.5	0.6	0.5	0.8	0.9	0.8	1.0	0.6	0.8	0.3	0.6	0.7	1.2	1.0	1.1	0.6
Northern Beaches	0.6	0.4	0.5	0.5	0.5	0.5	0.2	0.3	0.5	0.5	0.5	0.7	0.6	0.7	0.6	0.7	0.5
Oberon	.	1.1	0.8	1.5	0.6	.	.	.	1.1	2.5	0.2	0.3	0.2	1.0	.	0.5	1.1
Orange	.	1.7	1.3	2.3	2.3	0.8	.	1.7	2.1	1.4	1.7	1.4	1.7	1.3	0.6	0.9	1.7
Parkes	10.0	1.6	1.6	1.8	2.0	.	.	0.6	0.9	2.3	0.9	0.9	0.5	2.0	0.1	0.9	2.0
Parramatta	.	0.9	0.8	0.7	0.8	1.6	2.5	0.9	1.1	0.7	0.8	1.2	1.1	1.0	1.7	1.3	0.8
Penrith	0.7	1.6	1.1	1.3	1.3	1.5	1.2	1.5	1.2	0.9	1.5	1.4	1.4	1.2	1.1	1.4	1.2
Port Macquarie-Hastings	.	0.8	0.9	1.0	0.8	0.7	.	1.1	0.7	1.6	0.8	0.7	0.9	1.3	0.6	0.7	1.1
Port Stephens	.	1.3	0.9	1.2	1.3	.	0.8	0.4	0.9	1.2	1.1	0.8	0.8	1.1	0.3	0.9	1.3
Queanbeyan-Palerang Regional	2.6	0.6	0.7	0.8	0.5	0.3	.	0.8	0.9	0.5	1.3	1.3	1.1	0.9	0.2	0.5	1.0
Randwick	2.0	0.6	0.9	0.6	0.7	1.1	1.2	0.8	0.6	0.5	0.7	0.6	0.6	0.8	1.1	1.0	0.6
Richmond Valley	.	1.4	1.4	1.7	1.8	.	2.6	1.1	1.2	1.7	1.1	0.6	0.7	1.2	0.4	0.8	1.2
Ryde	.	0.4	0.5	0.5	0.7	0.3	1.5	0.5	0.9	0.6	0.4	0.5	1.3	0.6	0.7	1.1	0.6
Shellharbour	.	0.9	0.6	1.2	0.8	0.6	2.5	1.4	0.7	0.7	1.1	0.9	1.2	0.7	0.4	0.6	1.0
Shoalhaven	1.5	0.9	1.0	1.5	1.4	0.5	1.2	0.5	1.1	1.0	0.8	0.8	1.1	0.8	0.3	0.6	1.1
Singleton	.	1.3	1.0	1.4	1.3	0.7	.	.	1.2	1.7	1.4	0.8	0.9	1.3	0.1	0.8	1.0
Snowy Monaro Regional	.	0.7	0.9	1.4	0.9	.	.	.	0.5	0.5	0.1	0.5	0.2	0.5	0.1	0.4	1.0
Snowy Valleys	.	1.4	1.1	1.7	1.5	0.4	.	.	2.5	2.8	1.5	2.1	0.4	1.7	0.9	0.5	1.7
Strathfield	.	0.9	0.9	0.6	0.7	0.9	2.8	1.7	1.1	0.5	0.7	1.1	0.6	0.6	2.2	1.7	0.7
Sutherland Shire	0.7	0.6	0.6	0.5	0.5	0.3	.	0.2	0.5	0.4	0.5	0.7	0.8	0.6	0.5	0.6	0.7
Sydney	1.3	1.2	3.5	1.6	2.5	4.1	1.6	2.8	0.9	1.8	0.9	1.1	4.3	1.8	9.2	3.2	1.4
Tamworth Regional	2.4	1.4	1.6	1.5	1.5	1.0	1.0	1.0	2.8	1.8	1.1	1.9	1.4	1.7	0.8	1.0	1.9
Temora	.	1.1	1.1	0.2	0.3	.	.	.	1.0	0.4	0.9	0.6	0.5	1.3	.	0.5	1.0
Tenterfield	.	1.5	1.4	0.4	1.5	.	.	1.3	1.1	1.0	0.8	0.6	0.4	2.2	.	0.5	1.3
The Hills Shire	.	0.3	0.4	0.5	0.4	0.3	.	0.2	0.6	0.3	0.4	0.7	0.6	0.5	0.4	0.8	0.4
Tweed	3.2	0.9	0.7	0.8	0.9	0.3	1.3	0.5	0.7	0.8	1.0	0.9	0.6	0.9	0.6	0.7	0.9
Unincorporated Far West	.	.	.	.	.	.	.	.	.	.	.	.	.	.	.	.	.
Upper Hunter Shire	.	0.6	0.6	1.1	1.4	.	.	.	0.9	2.8	1.0	0.5	0.2	1.2	0.1	0.5	0.8
Upper Lachlan Shire	.	0.3	0.5	1.0	0.7	.	.	.	0.4	0.5	0.1	0.3	0.0	1.0	.	0.3	0.5
Uralla	.	1.2	0.3	1.7	0.7	.	.	.	0.6	0.7	0.3	0.2	.	0.8	.	0.4	0.5
Wagga Wagga	2.3	1.6	1.5	1.5	1.3	1.0	.	1.9	3.3	1.8	1.6	1.7	1.8	1.9	0.8	0.8	1.9
Walcha	47.3	0.5	0.8	2.6	2.6	.	.	.	0.4	0.2	0.4	0.4	0.2	0.8	1.1	0.2	0.6
Walgett	23.4	6.1	3.7	1.5	1.8	.	.	.	4.6	3.5	2.1	1.8	0.9	3.0	0.3	0.7	4.5
Warren	.	.	.	.	.	.	.	.	.	.	.	.	.	.	.	.	.
Warrumbungle Shire	.	1.6	1.0	1.7	1.8	.	.	.	1.0	1.3	0.8	0.5	0.5	1.4	0.4	0.6	1.3
Waverley	.	0.6	1.1	0.9	0.8	0.9	1.7	0.2	0.5	0.2	0.8	0.6	2.5	1.0	1.2	1.2	0.8
Weddin	.	0.7	0.7	0.7	0.6	.	.	.	0.4	0.6	0.6	0.3	0.3	1.3	0.5	0.5	1.4
Wentworth	21.5	2.8	2.3	1.6	1.0	1.5	.	.	2.0	3.1	2.1	1.5	0.4	1.6	0.5	0.3	2.3
Willoughby	1.9	0.3	0.5	0.5	0.7	0.5	0.8	0.6	0.7	0.7	0.4	0.5	2.3	0.6	1.1	1.0	0.5
Wingecarribee	.	0.5	0.5	0.9	0.9	0.1	.	.	0.4	0.7	0.4	0.4	0.4	0.5	0.1	0.6	0.9
Wollondilly	.	1.0	0.4	0.7	0.5	0.1	.	0.5	0.5	0.6	0.6	0.3	0.1	0.4	0.0	0.4	0.7
Wollongong	0.7	0.8	1.0	1.0	0.8	1.1	1.7	1.4	1.0	1.1	1.1	1.3	1.3	1.1	0.6	0.6	1.1
Woollahra	.	0.5	0.5	0.6	0.6	0.1	.	.	0.6	0.3	0.6	0.5	0.4	1.0	1.0	0.8	0.6
Yass Valley	.	0.5	0.4	0.6	0.7	.	.	.	0.6	1.5	0.4	0.3	0.3	0.5	.	0.4	0.4
NSW	1.0	1.0	1.0	1.0	1.0	1.0	1.0	1.0	1.0	1.0	1.0	1.0	1.0	1.0	1.0	1.0	1.0

\* For further explanation of rate calculation populations and the ratio to NSW rate, see page 42, Footnote 2 and Note [8]. A result of '.' indicates either that there were no relevant offences recorded in the LGA, or that the population is less than 3,000 people and no rate was calculated.

Sydney LGA can be considered a special case since the population used to calculate the rate is much lower than the population using the area for work and entertainment and this will be reflected in higher incident rates.

\* The ratios given on the offence of murder are calculated for the number of victims, not incidents, and must be treated with caution since for LGAs with relatively small populations a single murder victim will result in relatively high ratio to state.

**TABLE 3.3C: NUMBER OF RECORDED CRIMINAL INCIDENTS FOR MAJOR OFFENCES, OVER THE 12 MONTHS TO MARCH 2018, NSW LGAs**

NSW LGA	Murder *	Domestic violence related assault	Non-domestic violence related assault	Sexual assault	Indecent assault, act of indecency and other sexual offences	Robbery without a weapon	Robbery with a firearm	Robbery with a weapon not a firearm	Break and enter dwelling	Break and enter non-dwelling	Motor vehicle theft	Steal from motor vehicle	Steal from retail store	Steal from dwelling	Steal from person	Fraud	Malicious damage to property
Albury	0	266	316	52	67	10	2	4	341	118	143	621	264	243	24	339	679
Armidale Regional	1	189	195	27	31	9	0	6	289	72	64	264	181	162	22	182	507
Ballina	0	97	197	25	33	5	0	4	98	85	66	250	99	117	14	200	317
Balranald	0	4	11	0	0	0	0	0	10	6	3	7	0	5	0	4	28
Bathurst Regional	0	229	229	57	62	6	2	6	215	68	65	229	126	128	25	252	538
Bayside	1	524	469	83	87	31	3	17	328	114	220	673	429	283	84	976	942
Bega Valley	0	103	108	28	40	1	0	0	61	51	27	115	50	64	6	104	267
Bellingen	0	37	41	9	9	0	0	0	28	27	26	37	4	29	5	31	83
Berrigan	0	16	14	6	5	0	0	0	17	15	3	23	5	18	0	14	42
Blacktown	5	2,002	1,690	280	360	132	9	81	1,518	337	802	2,896	1,258	915	284	3,355	3,257
Bland	0	23	15	9	10	0	0	0	12	9	15	23	6	6	0	24	34
Blayney	0	37	21	7	13	0	0	0	19	16	12	27	3	8	2	11	46
Blue Mountains	0	266	243	76	68	11	0	4	171	55	60	215	68	131	24	350	656
Bogan	0	24	24	2	7	0	0	0	6	7	9	26	9	12	1	13	32
Bourke	0	91	47	16	15	0	0	1	95	21	12	55	53	33	1	28	119
Brewarrina	0	43	32	8	6	0	0	0	44	28	3	27	7	13	2	11	43
Broken Hill	0	198	160	15	38	4	0	2	206	49	36	163	36	107	4	56	340
Burwood	1	76	137	12	28	22	0	7	100	36	41	138	295	68	41	408	145
Byron	1	98	273	32	54	6	0	2	120	63	63	199	97	107	50	173	337
Cabonne	0	32	18	11	11	0	0	0	32	23	14	26	3	24	0	43	34
Camden	0	339	161	37	78	3	1	5	158	56	94	254	131	109	5	339	426
Campbelltown	2	806	641	152	183	41	4	36	565	176	265	841	808	388	74	847	1,401
Canada Bay	0	109	117	25	45	10	1	7	263	70	119	323	95	152	27	549	368
Canterbury-Bankstown	4	1,143	1,060	165	190	85	9	45	823	230	668	1,563	594	503	97	2,225	1,874
Carrathool	0	10	14	2	6	0	0	0	5	5	5	12	1	6	0	5	26
Central Coast	4	1,620	1,461	282	399	58	5	36	1,047	384	677	1,613	828	765	163	2,169	3,042
Central Darling	0	89	25	6	6	0	0	0	29	17	6	20	1	7	1	2	49
Cessnock	0	343	246	88	61	6	1	8	380	172	309	450	149	245	24	302	683
Clarence Valley	0	227	262	37	60	1	1	1	193	132	99	225	114	229	22	302	462
Cobar	0	32	42	4	16	0	0	0	25	14	17	46	1	8	0	15	85
Coffs Harbour	0	476	528	110	147	15	1	20	459	218	182	400	196	276	46	474	767
Coolamon	1	13	12	4	3	0	0	0	9	17	9	5	4	5	0	8	16
Coonamble	0	55	50	9	8	3	0	0	75	45	14	50	19	22	1	30	105
Cootamundra-Gundagai	0	53	45	10	12	0	0	1	42	11	17	25	21	32	1	99	118
Cowra	0	64	77	15	17	3	0	0	125	39	13	54	34	53	3	72	149
Cumberland	2	845	769	136	154	88	6	34	821	226	411	1,265	425	430	107	1,760	1,155
Dubbo Regional	0	387	398	78	118	5	0	9	582	143	197	615	303	248	40	379	1,015
Dungog	0	30	21	7	11	0	0	0	17	11	7	6	2	22	0	25	49
Edward River	0	38	37	11	12	0	0	0	34	20	2	41	25	28	2	28	106
Eurobodalla	0	163	207	35	39	3	0	3	178	69	66	182	73	113	6	143	375
Fairfield	0	719	647	106	150	64	8	46	541	157	334	834	377	244	87	1,292	1,110
Federation	1	25	31	6	14	0	0	0	38	34	14	46	12	47	2	42	103
Forbes	1	54	72	6	8	0	0	0	55	47	21	57	23	58	2	42	124
Georges River	1	388	367	48	76	29	0	10	226	87	144	422	307	167	63	908	728
Gilgandra	0	40	15	8	7	1	0	1	34	21	8	27	7	28	3	18	37
Glen Innes Severn	0	77	73	17	15	3	0	2	40	36	22	21	11	48	1	39	127
Goulburn Mulwaree	0	140	129	49	41	1	0	2	61	35	32	125	149	99	3	158	253
Greater Hume Shire	0	22	12	8	12	1	0	0	32	19	18	32	4	28	1	29	41
Griffith	0	196	145	22	15	6	0	9	148	86	69	321	121	95	8	97	391
Gunnedah	0	67	87	16	19	1	0	1	67	13	39	52	40	73	1	64	172
Gwydir	0	21	14	5	6	0	0	0	5	6	9	10	1	21	0	11	35
Hawkesbury	0	275	193	56	69	6	0	4	161	67	111	235	150	101	20	260	380
Hay	0	19	19	3	5	0	0	0	18	6	5	13	3	9	0	6	84
Hilltops	0	99	98	38	39	2	0	1	49	38	38	66	33	68	0	71	223
Hornsby	0	132	203	65	73	14	1	1	272	81	87	400	305	168	45	587	613
Hunters Hill	0	25	29	5	10	0	1	0	42	11	21	47	5	31	2	53	79
Inner West	1	402	641	92	155	40	5	25	470	167	266	802	364	441	111	1,370	1,304
Inverell	0	101	115	24	28	0	0	1	144	79	42	104	71	107	3	50	285
Junee	0	13	17	5	4	0	0	0	21	15	8	31	2	20	0	3	45
Kempsey	0	238	195	42	46	11	1	6	278	90	97	155	154	179	28	120	339
Kiama	0	35	29	9	13	1	0	2	44	31	33	104	8	34	5	62	91
Ku-ring-gai	0	64	91	34	47	3	0	1	329	64	38	235	43	154	18	451	330
Kyogle	0	50	33	9	9	1	0	0	36	19	12	12	4	22	1	11	77
Lachlan	0	65	43	8	18	0	0	0	25	40	18	26	5	31	1	13	101
Lake Macquarie	0	792	689	191	226	19	3	20	636	313	556	1,208	708	495	69	1,292	1,939



**TABLE 3.3C: NUMBER OF RECORDED CRIMINAL INCIDENTS FOR MAJOR OFFENCES, OVER THE 12 MONTHS TO MARCH 2018, NSW LGAs**

NSW LGA	Murder *	Domestic violence related assault	Non-domestic violence related assault	Sexual assault	Indecent assault, act of indecency and other sexual offences	Robbery without a weapon	Robbery with a firearm	Robbery with a weapon not a firearm	Break and enter dwelling	Break and enter non-dwelling	Motor vehicle theft	Steal from motor vehicle	Steal from retail store	Steal from dwelling	Steal from person	Fraud	Malicious damage to property
Lane Cove	0	41	50	16	15	1	0	1	134	51	29	124	27	63	6	150	112
Leeton	1	68	64	20	23	0	0	3	83	36	30	59	29	36	2	45	103
Lismore	0	166	282	60	67	7	1	4	210	82	116	235	113	171	15	147	469
Lithgow	0	98	127	16	22	2	0	1	101	44	38	69	43	80	9	137	245
Liverpool	1	842	708	128	210	61	7	31	755	226	405	1,164	727	409	111	1,603	1,361
Liverpool Plains	0	36	42	3	16	0	0	0	24	26	14	13	5	35	0	22	119
Lockhart	0	15	10	3	2	0	0	0	8	4	3	3	0	5	0	4	17
Lord Howe Island	0	0	1	0	0	0	0	0	0	2	0	0	0	1	0	2	3
Maitland	0	450	367	71	101	9	2	9	396	166	210	658	366	334	35	515	889
Mid-Coast	0	408	415	98	146	19	0	9	439	246	166	391	242	433	30	428	996
Mid-Western Regional	1	124	109	36	30	1	0	0	82	23	28	100	34	85	4	90	289
Moree Plains	0	201	194	35	33	15	2	12	341	199	124	294	178	143	20	90	613
Mosman	0	54	38	13	18	2	0	1	62	22	23	69	28	61	5	109	116
Murray River	0	14	26	3	2	0	0	0	25	30	11	56	14	21	1	32	65
Murrumbidgee	0	25	17	3	7	0	0	0	13	8	6	8	2	9	0	7	35
Muswellbrook	0	94	102	24	24	4	1	4	159	63	30	102	43	61	7	55	215
Nambucca	0	100	94	25	43	1	0	2	131	114	42	145	68	75	6	92	257
Narrabri	1	84	86	13	10	1	0	0	56	26	25	79	21	59	2	76	170
Narrandera	0	31	30	7	9	0	0	2	83	65	22	55	22	21	0	19	78
Narromine	0	63	38	6	18	2	0	0	57	56	17	60	8	42	4	22	99
Newcastle	1	634	1,055	186	250	30	4	34	994	404	505	2,116	901	765	164	1,641	2,213
North Sydney	0	125	192	27	56	12	1	8	147	77	41	222	171	208	44	507	354
Northern Beaches	1	381	572	100	122	24	1	8	450	188	218	917	493	437	90	1,176	1,106
Oberon	0	22	19	6	3	0	0	0	21	18	2	7	3	14	0	16	47
Orange	0	264	231	71	92	6	0	8	301	75	120	302	222	139	15	232	558
Parkes	1	88	102	20	29	0	0	1	48	46	22	68	24	73	1	80	232
Parramatta	0	730	790	123	191	72	10	24	908	221	316	1,433	835	579	234	1,879	1,398
Penrith	1	1,155	960	202	251	56	4	34	833	235	515	1,423	875	596	126	1,781	1,932
Port Macquarie-Hastings	0	231	283	59	66	10	0	10	186	174	102	263	223	253	26	351	678
Port Stephens	0	335	254	63	89	0	1	3	226	110	127	297	178	193	14	386	698
Queanbeyan-Palerang Regional	1	135	165	34	26	3	0	5	193	41	128	370	203	131	8	196	467
Randwick	2	346	547	67	97	32	3	14	336	95	164	474	284	305	94	940	676
Richmond Valley	0	118	139	29	41	0	1	3	102	54	43	74	55	68	6	119	211
Ryde	0	195	235	49	85	8	3	7	375	94	76	329	514	186	53	824	532
Shellharbour	0	230	172	62	56	8	3	11	180	66	130	327	264	126	15	253	530
Shoalhaven	1	345	415	112	139	10	2	6	395	142	142	392	368	206	19	382	842
Singleton	0	109	101	24	31	3	0	0	96	54	56	94	67	75	2	123	181
Snowy Monaro Regional	0	53	81	22	18	0	0	0	40	13	4	50	16	24	1	55	166
Snowy Valleys	0	75	69	19	22	1	0	0	129	54	37	152	20	62	8	43	190
Strathfield	0	136	154	19	27	7	2	8	167	29	53	235	80	65	55	452	231
Sutherland Shire	1	471	596	88	108	14	0	5	372	115	208	767	595	315	63	874	1,245
Sydney	2	1,002	3,265	261	539	175	6	73	720	548	350	1,195	3,059	1,033	1,215	4,505	2,489
Tamworth Regional	1	317	414	67	89	12	1	7	603	145	111	596	276	264	30	375	921
Temora	0	24	28	1	2	0	0	0	22	3	9	19	9	20	0	19	49
Tenterfield	0	37	38	2	10	0	0	1	25	9	9	19	9	36	0	23	70
The Hills Shire	0	206	258	58	57	8	0	3	347	64	113	535	291	218	34	817	456
Tweed	2	294	267	56	79	6	2	5	238	99	150	420	165	208	35	418	623
Unincorporated Far West	0	1	3	1	1	0	0	1	1	0	1	2	6	0	0	0	3
Upper Hunter Shire	0	31	34	12	19	0	0	0	46	54	24	39	8	43	1	42	95
Upper Lachlan Shire	0	8	15	6	5	0	0	0	12	5	1	11	1	20	0	15	32
Uralla	0	28	8	8	4	0	0	0	13	6	3	7	0	13	0	17	26
Wagga Wagga	1	385	400	70	79	12	0	14	751	150	173	534	365	309	29	312	971
Walcha	1	6	11	6	8	0	0	0	4	1	2	7	2	6	2	3	14
Walgett	1	142	97	7	11	0	0	0	104	30	22	59	19	48	1	29	221
Warren	0	31	24	6	4	0	0	0	19	10	5	20	5	11	3	8	71
Warrumbungle Shire	0	56	38	12	17	0	0	0	35	17	12	23	15	33	2	35	93
Waverley	0	145	324	51	53	12	2	2	117	18	98	202	576	177	50	555	461
Weddin	0	9	10	2	2	0	0	0	5	3	4	5	3	12	1	11	39
Wentworth	1	71	66	8	7	2	0	0	49	29	24	51	9	27	2	13	123
Willoughby	1	97	166	27	53	7	1	5	192	78	54	208	573	123	50	487	310
Wingecarribee	0	93	109	32	41	1	0	0	67	49	35	91	66	65	3	171	351
Wollondilly	0	187	85	26	22	1	0	3	86	37	52	81	21	51	1	138	272
Wollongong	1	617	860	155	161	42	6	33	732	303	391	1,372	846	589	79	855	1,760
Woollahra	0	98	128	25	32	1	0	0	119	24	54	150	82	143	34	309	272
Yass Valley	0	28	31	7	11	0	0	0	38	33	11	21	17	19	0	37	56
In Custody	2	7	1,145	56	30	3	0	0	0	2	1	1	0	0	0	9	86
<b>NSW</b>	<b>52</b>	<b>28,268</b>	<b>32,156</b>	<b>5,764</b>	<b>7,545</b>	<b>1,464</b>	<b>130</b>	<b>886</b>	<b>27,315</b>	<b>10,328</b>	<b>12,960</b>	<b>39,053</b>	<b>24,508</b>	<b>19,314</b>	<b>4,549</b>	<b>48,554</b>	<b>60,330</b>

\* For murder the count given is for the number of victims, not incidents.

**TABLE 3.3D: NUMBER OF RECORDED CRIMINAL INCIDENTS FOR MAJOR OFFENCES, OVER THE 12 MONTHS TO MARCH 2017, NSW LGAs**

NSW LGA	Murder *	Domestic violence related assault	Non-domestic violence related assault	Sexual assault	Indecent assault, act of indecency and other sexual offences	Robbery without a weapon	Robbery with a firearm	Robbery with a weapon not a firearm	Break and enter dwelling	Break and enter non-dwelling	Motor vehicle theft	Steal from motor vehicle	Steal from retail store	Steal from dwelling	Steal from person	Fraud	Malicious damage to property
Albury	2	297	294	54	89	10	4	5	382	148	123	580	296	249	20	295	692
Armidale Regional	0	158	197	44	33	5	1	9	291	157	63	473	135	168	18	234	602
Ballina	0	113	156	27	31	3	0	1	135	91	52	221	107	111	13	225	346
Balranald	0	3	14	3	2	0	0	0	3	10	1	7	2	13	0	4	28
Bathurst Regional	0	192	229	38	64	7	0	3	329	83	93	350	183	137	25	299	576
Bayside	1	536	448	47	88	36	3	17	360	109	229	533	323	342	98	1,166	974
Bega Valley	0	102	134	29	28	3	0	1	90	59	28	181	53	81	9	100	265
Bellingen	0	40	33	6	10	0	0	1	21	41	13	40	9	21	0	34	77
Berrigan	0	14	12	2	6	0	0	0	18	21	5	11	6	28	0	19	64
Blacktown	4	2,090	1,590	255	330	181	12	59	1,584	335	811	2,507	1,099	1,025	283	2,865	3,448
Bland	0	20	22	3	7	0	0	0	8	11	11	16	5	5	0	20	31
Blayney	0	16	24	9	6	1	1	0	51	24	15	33	4	23	0	26	53
Blue Mountains	1	251	211	73	72	7	2	2	157	83	61	182	87	172	24	303	536
Bogan	0	26	14	1	3	0	0	0	20	11	15	20	8	13	0	9	37
Bourke	0	89	49	15	10	1	0	3	101	53	26	93	74	39	3	40	172
Brewarrina	1	43	36	10	5	0	0	2	55	33	8	19	6	8	0	12	53
Broken Hill	0	149	134	30	25	3	0	0	156	67	64	166	66	141	11	70	304
Burwood	0	78	125	11	33	11	0	1	147	30	28	161	279	95	33	521	207
Byron	0	108	218	27	43	3	1	0	141	77	68	261	101	142	48	244	330
Cabonne	0	24	23	9	16	1	0	0	31	21	16	19	3	21	0	28	66
Camden	0	234	164	50	76	6	1	2	146	80	84	191	124	150	9	478	437
Campbelltown	0	872	719	161	185	45	7	16	700	208	316	999	817	409	105	1,050	1,689
Canada Bay	2	104	139	20	31	6	1	6	257	70	94	382	83	205	28	676	319
Canterbury-Bankstown	12	1,377	1,043	141	202	73	8	39	745	206	712	1,738	556	536	102	2,603	2,013
Carrathool	0	7	16	2	4	0	0	0	15	7	4	11	1	6	0	5	29
Central Coast	2	1,745	1,458	288	388	36	6	25	1,381	482	740	2,123	935	804	154	2,087	3,421
Central Darling	0	86	51	3	4	0	0	0	70	24	13	32	1	11	1	5	49
Cessnock	0	360	264	50	76	6	3	8	407	204	308	519	160	291	28	312	556
Clarence Valley	0	215	278	51	43	3	0	10	288	108	99	280	131	265	16	256	592
Cobar	0	46	36	6	4	2	0	0	41	24	22	33	16	24	1	25	91
Coffs Harbour	0	512	404	108	123	12	1	7	270	209	128	331	261	233	47	376	763
Coolamon	0	16	9	2	7	0	0	0	14	8	7	5	1	17	0	6	26
Coonamble	0	48	42	1	9	2	0	1	103	38	15	65	26	36	2	16	104
Cootamundra-Gundagai	0	51	35	13	9	0	0	0	38	17	8	45	9	41	0	116	114
Cowra	0	58	96	19	23	2	1	1	148	36	20	78	22	64	3	57	201
Cumberland	4	854	746	115	151	63	15	36	887	218	387	1,087	395	432	144	1,738	1,262
Dubbo Regional	1	393	417	80	97	10	3	11	959	242	285	947	407	356	50	338	1,038
Dungog	0	23	32	2	7	0	0	0	20	18	14	16	2	19	1	16	56
Edward River	0	50	30	14	15	0	0	0	37	27	15	44	17	42	2	29	103
Eurobodalla	0	149	185	18	41	6	1	0	187	75	67	183	139	101	9	128	351
Fairfield	3	702	668	87	102	53	8	53	441	149	402	1,002	353	281	103	1,310	1,066
Federation	0	29	31	9	9	1	0	1	35	23	11	31	12	49	2	37	72
Forbes	1	69	76	9	11	0	0	0	87	44	13	74	14	49	3	38	179
Georges River	0	459	347	31	76	21	4	6	229	99	131	370	345	191	64	834	763
Gilgandra	0	33	21	5	10	0	0	2	34	9	2	17	5	20	0	13	44
Glen Innes Severn	0	98	67	16	13	1	0	3	116	52	25	94	27	68	2	40	169
Goulburn Mulwaree	0	107	115	32	44	2	0	0	78	49	28	163	95	70	1	170	244
Greater Hume Shire	0	20	14	12	10	1	0	0	22	21	12	29	8	15	0	26	49
Griffith	0	233	152	17	31	5	0	7	176	74	52	207	140	89	3	99	302
Gunnedah	0	79	80	13	16	0	0	0	57	19	18	32	35	60	1	49	167
Gwydir	0	12	21	1	5	0	0	0	10	7	4	12	3	19	0	12	36
Hawkesbury	0	241	222	41	69	6	2	6	175	102	123	386	188	167	27	354	466
Hay	0	22	27	2	7	0	0	0	12	15	5	14	6	17	1	9	68
Hilltops	0	76	89	25	32	1	0	1	61	28	25	69	41	42	2	78	220
Hornsby	0	159	252	42	75	6	0	2	306	108	81	311	297	168	31	654	633
Hunters Hill	0	14	26	5	6	2	0	1	52	16	20	49	4	27	5	45	59
Inner West	0	420	599	92	143	42	5	24	550	169	255	897	408	581	86	1,582	1,358
Inverell	1	90	116	19	44	1	0	0	157	30	12	73	50	75	5	75	213
Junee	0	31	35	8	6	0	0	1	24	16	8	13	5	21	0	15	74
Kempsey	0	226	187	34	35	4	1	8	236	122	77	208	129	174	12	146	492
Kiama	0	26	46	8	14	1	0	1	40	37	33	133	10	37	4	49	91
Ku-ring-gai	0	77	85	40	50	5	0	0	354	90	44	243	52	153	22	480	371
Kyogle	0	42	39	11	15	0	0	0	33	31	17	22	9	22	0	18	73
Lachlan	0	51	50	12	11	0	0	0	50	21	16	57	11	48	1	24	88
Lake Macquarie	2	767	631	160	208	31	3	17	758	296	541	1,222	710	582	77	1,270	1,878



**TABLE 3.3D: NUMBER OF RECORDED CRIMINAL INCIDENTS FOR MAJOR OFFENCES, OVER THE 12 MONTHS TO MARCH 2017, NSW LGAs**

NSW LGA	Murder *	Domestic violence related assault	Non-domestic violence related assault	Sexual assault	Indecent assault, act of indecency and other sexual offences	Robbery without a weapon	Robbery with a firearm	Robbery with a weapon not a firearm	Break and enter dwelling	Break and enter non-dwelling	Motor vehicle theft	Steal from motor vehicle	Steal from retail store	Steal from dwelling	Steal from person	Fraud	Malicious damage to property
Lane Cove	0	37	53	10	9	1	0	1	77	36	27	91	15	55	6	151	112
Leeton	0	55	66	12	13	3	0	1	83	43	22	38	31	39	1	26	125
Lismore	2	174	288	84	109	8	0	7	186	77	89	247	161	134	25	246	485
Lithgow	2	89	117	19	19	3	0	4	133	69	48	93	38	85	8	152	299
Liverpool	3	993	722	151	203	45	3	22	755	176	397	1,318	844	533	111	1,779	1,366
Liverpool Plains	0	53	41	5	15	0	0	0	30	42	14	21	15	33	0	29	88
Lockhart	0	9	5	1	1	0	0	0	13	11	3	6	1	8	0	4	21
Lord Howe Island	0	3	4	0	5	0	0	0	0	0	0	0	0	0	0	0	1
Maitland	1	470	310	68	88	10	3	12	366	151	228	832	261	413	31	361	833
Mid-Coast	1	444	417	123	141	9	0	11	529	395	158	295	168	352	24	362	944
Mid-Western Regional	0	121	129	32	35	0	1	0	99	42	24	121	43	101	5	85	234
Moree Plains	0	264	169	32	28	10	1	7	357	161	93	212	149	155	9	106	610
Mosman	0	41	34	4	24	2	0	2	57	18	18	91	21	66	6	115	132
Murray River	1	30	28	5	1	2	0	1	44	53	20	37	24	33	2	41	74
Murrumbidgee	0	24	15	4	6	0	0	0	6	19	8	10	1	15	0	7	27
Muswellbrook	0	98	92	17	23	0	0	2	157	64	65	125	80	80	6	62	249
Nambucca	0	104	135	27	46	1	0	4	88	59	46	114	59	73	8	104	257
Narrabri	0	95	88	16	10	0	0	1	92	42	41	67	37	75	3	48	205
Narrandera	0	29	42	6	7	1	1	0	52	53	17	41	34	22	1	10	65
Narromine	0	45	55	13	12	2	0	0	93	54	37	73	23	55	11	32	117
Newcastle	0	712	1,147	158	230	49	10	36	893	323	485	2,089	754	723	167	1,563	2,199
North Sydney	0	143	185	23	41	11	0	4	147	93	37	154	138	196	30	485	328
Northern Beaches	3	323	629	93	108	26	0	4	459	227	191	820	588	448	91	1,217	1,178
Oberon	1	17	17	5	4	0	0	0	16	5	10	14	5	13	1	14	45
Orange	0	246	248	55	67	5	4	12	382	123	146	366	290	183	22	303	581
Parkes	0	121	114	23	31	3	0	0	82	61	27	99	55	81	2	54	288
Parramatta	1	644	779	107	169	53	11	36	931	246	285	1,128	750	617	204	2,030	1,399
Penrith	2	1,060	952	175	232	56	4	38	731	297	508	1,071	786	562	150	1,672	1,972
Port Macquarie-Hastings	0	268	291	62	77	2	1	6	170	105	111	238	168	214	23	302	526
Port Stephens	0	347	288	73	70	3	1	7	320	122	134	360	158	232	13	393	766
Queanbeyan-Palerang Regional	0	142	178	27	31	3	1	2	156	85	109	357	134	124	9	182	510
Randwick	0	389	474	61	99	24	0	28	412	86	203	510	248	426	87	1,028	729
Richmond Valley	0	163	140	32	44	4	0	3	147	51	53	138	51	80	5	93	344
Ryde	1	203	266	42	64	5	1	2	310	63	86	404	352	202	37	755	512
Shellharbour	0	226	230	60	81	11	1	5	242	124	144	451	196	170	16	282	482
Shoalhaven	0	367	425	102	114	5	1	12	401	172	159	488	273	249	11	431	861
Singleton	0	91	76	20	22	3	0	2	94	80	66	100	48	84	10	69	170
Snowy Monaro Regional	0	59	63	24	15	0	0	0	37	16	8	45	18	23	3	53	135
Snowy Valleys	0	78	61	10	18	0	0	1	93	38	16	108	33	94	4	48	226
Strathfield	0	97	151	16	36	9	0	3	209	52	85	238	67	143	45	453	241
Sutherland Shire	2	493	587	93	150	14	1	11	321	122	191	596	526	299	71	890	1,291
Sydney	4	997	3,233	202	340	185	10	72	768	574	354	1,532	2,783	1,067	1,328	5,303	2,675
Tamworth Regional	1	360	371	76	83	9	0	9	545	139	126	444	246	314	20	302	826
Temora	0	19	25	6	4	0	0	0	26	13	7	29	8	19	0	17	58
Tenterfield	0	35	37	5	8	0	0	2	59	22	13	36	15	44	2	37	92
The Hills Shire	1	207	239	55	79	12	0	5	419	121	115	439	275	225	40	830	506
Tweed	2	313	294	56	74	8	0	6	226	126	156	368	171	197	30	462	568
Unincorporated Far West	0	2	1	2	1	0	0	0	1	3	1	6	4	3	0	2	3
Upper Hunter Shire	0	30	45	12	16	0	0	0	44	32	27	49	16	40	1	40	130
Upper Lachlan Shire	0	14	13	2	3	0	0	0	12	5	4	6	0	16	0	12	23
Uralla	0	19	16	8	12	0	0	1	6	5	7	8	1	16	0	16	23
Wagga Wagga	2	393	381	73	65	11	0	7	759	112	161	678	346	384	34	319	941
Walcha	0	10	8	2	4	0	0	0	2	5	1	6	0	6	2	6	12
Walgett	1	127	78	20	7	0	0	0	71	49	17	46	23	42	1	22	219
Warren	0	27	32	23	10	0	0	0	32	8	14	25	6	14	0	8	47
Warrumbungle Shire	1	44	39	22	31	0	1	1	46	30	14	44	18	34	2	31	111
Waverley	0	164	366	35	48	9	3	0	193	51	106	246	650	255	48	514	497
Weddin	0	10	6	2	5	0	0	0	5	9	2	4	1	11	0	7	32
Wentworth	0	47	37	12	10	2	0	0	41	33	20	44	4	36	1	22	90
Willoughby	0	65	162	21	47	6	1	2	177	103	37	201	594	95	47	510	280
Wingecarribee	0	127	115	22	37	3	0	1	92	90	47	102	68	135	6	160	364
Wollondilly	0	157	88	41	53	3	1	1	84	53	55	103	15	75	3	186	234
Wollongong	1	751	806	132	150	36	8	17	801	395	377	1,407	911	584	71	856	1,795
Woollahra	0	86	117	24	42	3	0	0	181	35	57	191	73	170	69	290	303
Yass Valley	0	35	30	11	9	0	0	1	23	14	8	35	9	27	1	57	73
In Custody	1	5	1,101	54	26	3	0	2	0	4	1	1	0	0	0	14	131
<b>NSW</b>	<b>71</b>	<b>29,043</b>	<b>31,874</b>	<b>5,376</b>	<b>7,100</b>	<b>1,400</b>	<b>163</b>	<b>813</b>	<b>29,269</b>	<b>11,479</b>	<b>13,159</b>	<b>40,366</b>	<b>23,786</b>	<b>21,200</b>	<b>4,703</b>	<b>50,318</b>	<b>62,310</b>

\* For murder the count given is for the number of victims, not incidents.



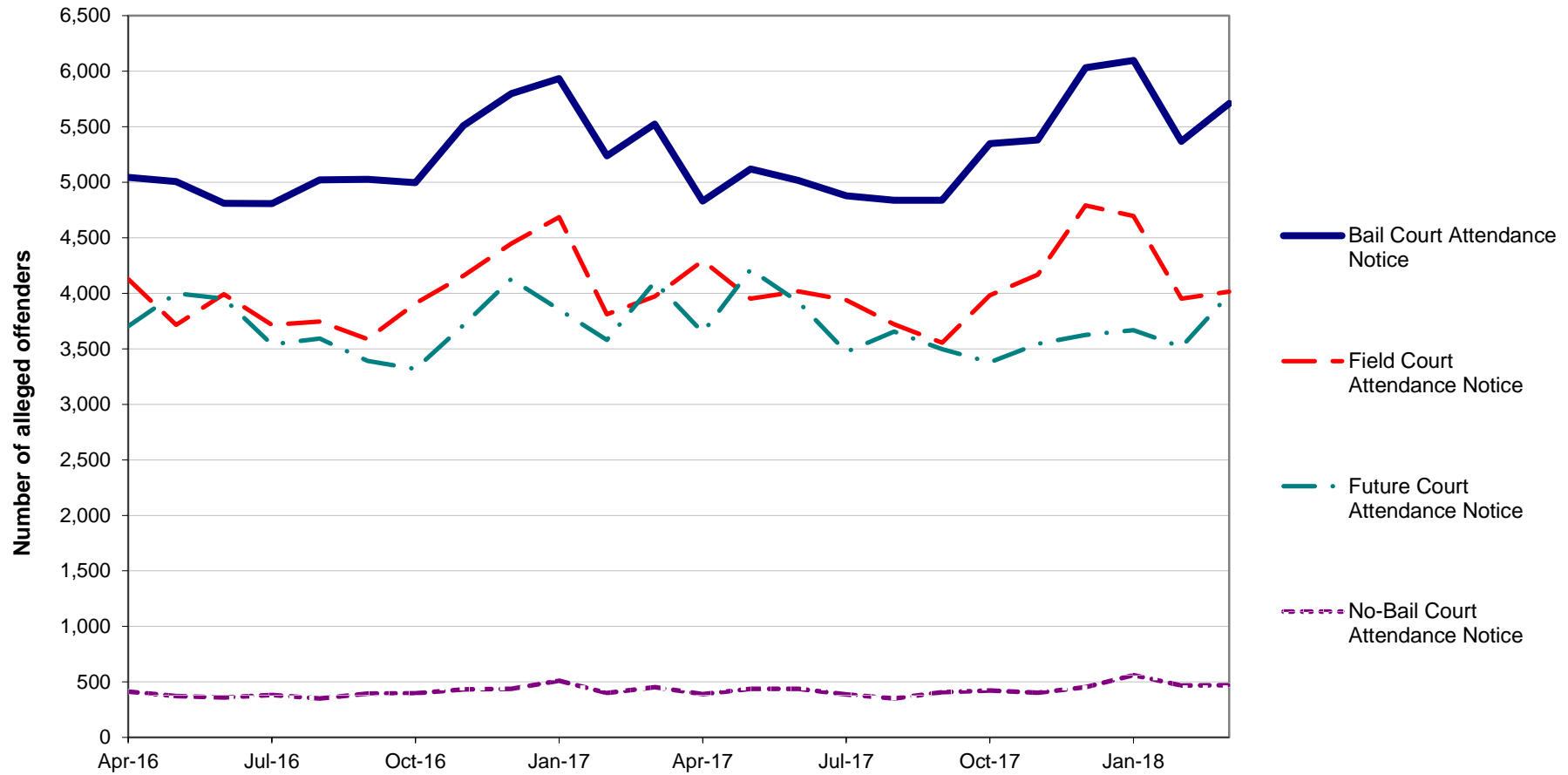
---

**SECTION 4:**

**METHODS OF PROCEEDINGS  
AGAINST ALLEGED OFFENDERS**

---

**Figure 4.1: TRENDS IN REFERRAL METHODS FOR ALLEGED OFFENDERS PROCEEDED AGAINST TO COURT, OVER THE 24 MONTHS TO MARCH 2018\*, NSW**



**Trends:**

Bail Court Attendance Notice shows a statistically significant upward trend for the 24 month period (up by 1.2%).

Field Court Attendance Notice shows no statistically significant trend for the 24 month period.

Future Court Attendance Notice shows no statistically significant trend for the 24 month period.

No-Bail Court Attendance Notice shows a statistically significant upward trend for the 24 month period (up by 5.9%).

\* The date alleged offenders were proceeded against, rather than the date the incident was recorded.

**TABLE 4.1: NUMBER, PERCENTAGE AND TREND<sup>^</sup> IN ALLEGED OFFENDERS PROCEEDED AGAINST BY NSW POLICE BY METHOD OF LEGAL PROCEEDINGS OVER THE 24 MONTHS TO MARCH 2018\*, NSW**

Type of process	Number of alleged offenders with proceedings commenced		Trend <sup>^</sup> over the 24 months to March 2018	
	over the 12 months to March 2017	over the 12 months to March 2018	Change	Annual percentage change
<b>Proceeded against to court:</b>				
Bail Court Attendance Notice	62,718	63,456	738	1.2%
No-Bail Court Attendance Notice	4,902	5,189	287	5.9%
Future Court Attendance Notice	44,875	44,132	-743	Stable
Field Court Attendance Notice	47,872	49,086	1,214	Stable
<b>All proceedings to court</b>	<b>160,367</b>	<b>161,863</b>	<b>1,496</b>	Stable
<b>Proceeded against other than to court:</b>				
Youth Justice Conference	538	757	219	40.7%
Caution Young Offenders Act	6,887	7,527	640	9.3%
Cannabis Caution	5,293	5,540	247	Stable
Criminal Infringement Notice	9,461	9,490	29	Stable
Infringement Notice	699,296	721,503	22,207	Stable
Liquor Offence Compliance Notice	393	372	-21	Stable
Warning Young Offenders Act	9,973	10,374	401	Stable
<b>All proceedings other than to court</b>	<b>731,841</b>	<b>755,563</b>	<b>23,722</b>	Stable
<b>All proceedings</b>	<b>892,208</b>	<b>917,426</b>	<b>25,218</b>	Stable

<sup>^</sup> For further explanation of **trend results**, see page 42, Notes [5] and [6].

\* The date alleged offenders were proceeded against, rather than the date the incident was recorded.

**TABLE 4.2: NUMBER, PERCENTAGE AND TREND<sup>^</sup> IN ALLEGED OFFENDERS PROCEEDED AGAINST TO COURT BY NSW POLICE FOR MAJOR OFFENCES OVER THE 24 MONTHS TO MARCH 2018\*\*, NSW**

<i>Offence category</i>	<i>Over the 12 months to March 2017</i>			<i>Over the 12 months to March 2018</i>			<i>Trend<sup>^</sup> over the last 24 months</i>	
	<i>Number proceeded against to court</i>	<i>Total number proceeded against</i>	<i>% proceeded against to court</i>	<i>Number proceeded against to court</i>	<i>Total number proceeded against</i>	<i>% proceeded against to court</i>	<i>Change in number proceeded against to court</i>	<i>Annual percentage change</i>
Murder	79	79	100.0%	73	73	100.0%	-6	Stable
Domestic violence related assault	12,449	12,805	97.2%	12,173	12,552	97.0%	-276	Stable
Non-domestic violence related assault	7,524	8,586	87.6%	7,561	8,789	86.0%	37	Stable
Sexual assault	835	835	100.0%	844	844	100.0%	9	Stable
Indecent assault, act of indecency and other sexual offences	1,399	1,451	96.4%	1,446	1,508	95.9%	47	3.4%
Robbery without a weapon	651	656	99.2%	750	762	98.4%	99	Stable
Robbery with a firearm	121	121	100.0%	115	115	100.0%	-6	Stable
Robbery with a weapon not a firearm	518	518	100.0%	556	556	100.0%	38	Stable
Break and enter dwelling	3,180	3,386	93.9%	3,059	3,252	94.1%	-121	Stable
Break and enter non-dwelling	1,709	1,944	87.9%	1,862	2,272	82.0%	153	Stable
Motor vehicle theft	1,332	1,452	91.7%	1,532	1,713	89.4%	200	15.0%
Steal from motor vehicle	1,207	1,377	87.7%	1,283	1,513	84.8%	76	Stable
Steal from retail store	5,268	10,786	48.8%	5,419	11,156	48.6%	151	Stable
Steal from dwelling	648	778	83.3%	560	770	72.7%	-88	Stable
Steal from person	368	426	86.4%	457	512	89.3%	89	Stable
Fraud	4,305	4,547	94.7%	4,648	4,922	94.4%	343	Stable
Malicious damage to property	5,500	6,515	84.4%	5,633	6,683	84.3%	133	Stable

<sup>^</sup> For further explanation of **trend results**, see page 42, Notes [5] and [6].

\*\* The date alleged offenders were proceeded against, rather than the date the incident was recorded.

---

**SECTION 5:**

**CLEARED CRIMINAL INCIDENTS  
AND WHETHER LEGAL PROCEEDINGS  
COMMENCED FOR SELECTED OFFENCES**

---

**TABLE 5.1: NUMBER OF RECORDED CRIMINAL INCIDENTS FOR SELECTED OFFENCES BY WHETHER LEGAL PROCEEDINGS COMMENCED IN 30 DAYS OF REPORTING, OVER THE 24 MONTHS TO FEBRUARY 2018, NSW**

Type of offence	Recorded criminal incidents over the 12 months to February 2017				Recorded criminal incidents over the 12 months to February 2018			
	Total number recorded	Cleared within 30 days of reporting			Total number recorded	Cleared within 30 days of reporting		
		Total number cleared <sup>#</sup>	Proceedings commenced within 30 days <sup>###</sup>	% proceedings commenced within 30 days		Total number cleared <sup>#</sup>	Proceedings commenced within 30 days <sup>###</sup>	% proceedings commenced within 30 days
Murder*	75	49	46	61.3	52	34	33	63.5
Domestic violence related assault	29,230	22,985	18,234	62.4	28,251	22,404	17,684	62.6
Non-domestic violence related assault	31,806	13,337	7,660	24.1	32,129	13,616	7,863	24.5
Sexual assault	5,371	1,093	439	8.2	5,786	1,266	473	8.2
Indecent assault, act of indecency and other sexual offences	7,141	2,012	1,112	15.6	7,480	2,208	1,243	16.6
Abduction and kidnapping	231	86	73	31.6	211	111	103	48.8
Robbery without a weapon	1,380	393	356	25.8	1,459	437	382	26.2
Robbery with a firearm	171	43	41	24.0	132	50	47	35.6
Robbery with a weapon not a firearm	814	275	264	32.4	874	312	297	34.0
Intimidation, stalking and harassment	30,315	18,201	11,439	37.7	31,037	18,461	11,638	37.5
Break and enter dwelling	29,376	2,257	1,872	6.4	27,538	2,118	1,762	6.4
Break and enter non-dwelling	11,571	976	874	7.6	10,409	1,039	936	9.0
Motor vehicle theft	13,044	1,012	850	6.5	13,029	1,046	869	6.7
Steal from motor vehicle	40,298	1,275	1,033	2.6	39,389	1,377	1,119	2.8
Steal from retail store	23,493	11,086	9,194	39.1	24,731	11,449	9,777	39.5
Steal from dwelling	21,351	1,623	746	3.5	19,363	1,493	689	3.6
Steal from person	4,790	450	315	6.6	4,553	512	356	7.8
Stock theft	493	31	11	2.2	464	16	4	0.9
Fraud	50,197	4,152	3,397	6.8	49,200	4,225	3,365	6.8
Arson	5,731	467	204	3.6	5,842	464	198	3.4
Malicious damage to property	62,578	15,114	11,313	18.1	60,750	14,845	11,394	18.8

<sup>#</sup> Total number cleared includes both incidents where proceedings were commenced and those where no proceedings were commenced.

<sup>###</sup> This includes incidents where a person was either proceeded against to court or proceeded against other than to court.

\* Victims for whom incident was cleared.



**TABLE 5.2: NUMBER OF RECORDED CRIMINAL INCIDENTS FOR SELECTED OFFENCES BY WHETHER LEGAL PROCEEDINGS COMMENCED IN 90 DAYS OF REPORTING, OVER THE 24 MONTHS TO DECEMBER 2017, NSW**

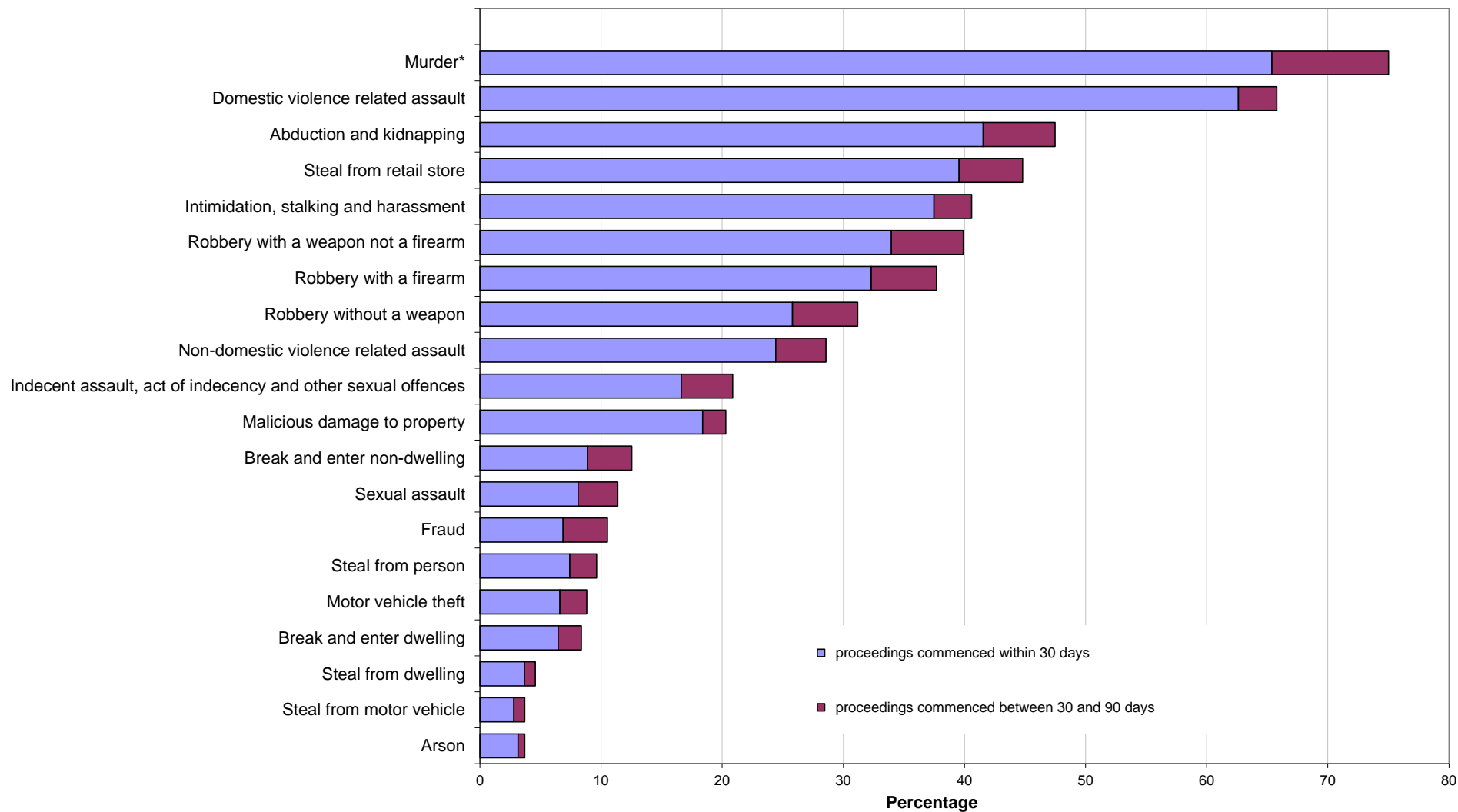
Type of offence	Recorded criminal incidents over the 12 months to December 2016				Recorded criminal incidents over the 12 months to December 2017			
	Total number recorded	Cleared within 90 days of reporting			Total number recorded	Cleared within 90 days of reporting		
		Total number cleared <sup>#</sup>	Proceedings commenced within 90 days <sup>###</sup>	% proceedings commenced within 90 days		Total number cleared <sup>#</sup>	Proceedings commenced within 90 days <sup>###</sup>	% proceedings commenced within 90 days
Murder*	70	47	44	62.9	52	40	39	75.0
Domestic violence related assault	29,146	24,302	19,008	65.2	28,436	23,873	18,707	65.8
Non-domestic violence related assault	31,759	15,365	9,023	28.4	32,148	15,623	9,182	28.6
Sexual assault	5,227	1,539	614	11.7	5,865	1,721	667	11.4
Indecent assault, act of indecency and other sexual offences	7,008	2,613	1,410	20.1	7,508	2,918	1,566	20.9
Abduction and kidnapping	238	111	93	39.1	219	120	104	47.5
Robbery without a weapon	1,364	449	406	29.8	1,446	508	451	31.2
Robbery with a firearm	165	59	56	33.9	130	53	49	37.7
Robbery with a weapon not a firearm	829	337	320	38.6	842	351	336	39.9
Intimidation, stalking and harassment	30,622	20,103	12,462	40.7	30,548	19,861	12,402	40.6
Break and enter dwelling	29,716	2,889	2,371	8.0	27,798	2,841	2,329	8.4
Break and enter non-dwelling	11,708	1,277	1,123	9.6	10,568	1,464	1,324	12.5
Motor vehicle theft	13,125	1,332	1,076	8.2	13,192	1,431	1,162	8.8
Steal from motor vehicle	40,478	1,682	1,370	3.4	39,062	1,768	1,443	3.7
Steal from retail store	23,540	12,489	10,536	44.8	24,534	12,806	10,987	44.8
Steal from dwelling	21,346	1,966	910	4.3	19,537	1,813	892	4.6
Steal from person	4,960	575	417	8.4	4,555	627	439	9.6
Stock theft	519	43	14	2.7	466	21	7	1.5
Fraud	50,864	6,353	5,157	10.1	49,065	6,458	5,162	10.5
Arson	5,599	470	207	3.7	5,884	518	217	3.7
Malicious damage to property	62,815	16,698	12,485	19.9	61,154	16,304	12,419	20.3

<sup>#</sup> Total number cleared includes both incidents where proceedings were commenced and those where no proceedings were commenced.

<sup>###</sup> This includes incidents where a person was either proceeded against to court or proceeded against other than to court.

\* Victims for whom incident was cleared.

**Figure 5.1: PERCENTAGE OF RECORDED CRIMINAL INCIDENTS FOR SELECTED OFFENCES WHERE LEGAL PROCEEDINGS COMMENCED WITHIN 30 AND 90 DAYS, OVER THE 12 MONTHS TO DECEMBER 2017, NSW**



\* For murder the data are counts of recorded victims, not criminal incidents.

---

# APPENDICES

---

## APPENDIX 1: TRENDS IN RECORDED CRIMINAL INCIDENTS FOR NSW

[1] Irrespective of how trends in recorded crime are presented, their interpretation is a difficult task. The recorded criminal incident data presented in this report are based on information derived from the NSW Police Force Computerised Operational Policing System (COPS), so only those incidents which are reported to, or detected by, police are included. The trends in recorded crime shown in this report will, therefore, reflect movements in the underlying factors which influence the detection, reporting and recording of crime, as well as changes in the true level of crime in the community.

[2] An alternative measure of the level of crime in Australia is available from crime victim surveys, for example the national Crime Victimization Survey by the Australian Bureau of Statistics (ABS)<sup>1</sup>. As well as providing an estimate of the victimisation rate at the State level for a selected set of offences, this survey estimates the proportion of crimes which are not reported to police, and are therefore not recorded in the official statistics. In particular, personal crimes, such as assault and robbery, are less likely to be reported than crimes which involve households. These surveys generally find that about half of physical assault victims aged 15 and over report the incident to police whereas break-ins are reported to police approximately three quarters of the time. Given that some offences have low reporting rates, it is possible that changes in recorded crime rates over time for these offences may be reflecting changes in reporting rates.

[3] Public willingness to report crime, however, is just one of the extraneous factors which can affect trends in recorded crime. Shifts in policing policy can also have a marked effect on the number of recorded drug offences, cases of offensive behaviour or of receiving stolen goods. For these offences, therefore, recorded rates probably do not accurately reflect actual rates. For this reason, the more detailed comparisons of crime rates and examination of trends in this document are restricted to offence categories which are more likely to be reported to, rather than detected by police.

[4] The interpretation of trends in official reports of crime can be considerably more difficult than the interpretation of trends in unemployment or inflation statistics. The ease with which recorded crime statistics can be misunderstood creates a temptation to offer an authoritative explanation for each major crime trend. Indeed, in many instances it is simply impossible to state with any assurance why a particular trend has appeared. This report, therefore, confines itself to identifying and describing trends in recorded crime, rather than explaining them.

[5] For each offence category or subcategory (except murder), a statistical test for trend was applied to the monthly numbers of recorded criminal incidents over the relevant period. In the case of murder, the statistical test for trend was applied to the monthly numbers of victims over the period. The trend test used was Kendall's rank-order correlation test (see, for example, Conover, W.J. 1980, *Practical Non-Parametric Statistics*, 2nd ed, John Wiley and Sons, pp 256-260). A two-tailed test was used to determine whether there had been an increasing or decreasing trend in the recorded numbers of criminal incidents over the relevant period covered in the report. Some month to month variations in the numbers of recorded incidents could be due in part to seasonal factors. The test for trend is not sensitive to seasonal variations; it is sensitive only to a generally increasing or generally decreasing trend over the time period examined.

[6] For the trend tests throughout this publication, where a statistically significant trend was found ( $p < .05$ ), the extent of the trend is indicated by the percentage change in the total number of recorded criminal incidents between the latest two consecutive 12-month periods for 24 month tests; and the average annual percentage change between the first 12-month period and the latest 12-month period for longer tests. A trend test was not performed if there were fewer than 20 incidents in any of the years for the period in question. The result ' . ' indicates that a trend test was not performed. A non-significant test result ( $p > .05$ ) is denoted by 'Stable' or by 'ns' in some larger LGA tables.

[7] In order to present an overview of crime trends in NSW the information in Section 1 relates to aggregate violent and property crime. The State graphs for violent and property offences are plotted as monthly rates<sup>2</sup> per 100,000 population. The State graph for violent offences shows distinct seasonality and the 12-month moving average (light grey line) indicates a downward path since 2004, which has stabilized over the past five years, whilst the property offences graph and the 6-month moving average (light grey line) both indicate a strong downward path since about 2000. Violent offences include: murder, attempted murder, manslaughter, assault - domestic violence related, assault - non-domestic violence related, assault police, robbery without a weapon, robbery with a firearm, robbery with a weapon not a firearm, sexual assault and indecent assault / act of indecency / other sexual offences. Property offences include: break and enter dwelling, break and enter non-dwelling, motor vehicle theft, steal from motor vehicle, steal from retail store, steal from dwelling, steal from person, stock theft, other theft and fraud.

[8] The ratio to NSW rate statistics are a comparison of a NSW regional rate per 100,000 population to the NSW rate per 100,000 population<sup>2</sup>. A ratio of one indicates parity with the NSW rate. Ratios indicating double the NSW rate (or more) before rounding are highlighted in red, whilst ratios indicating half the NSW rate (or less) before rounding are highlighted in yellow.

1. Australian Bureau of Statistics *Crime Victimization, Australia, Cat. No. 4530.0, ABS, Sydney. See the Australian Bureau of Statistics website for the latest version available at [www.abs.gov.au](http://www.abs.gov.au)*

2. For the rate calculations, specialised population data were prepared and provided to BOCSAR by the Australian Bureau of Statistics.

## APPENDIX 2: DEFINITIONS AND EXPLANATORY NOTES

The data in this report are extracted from the NSW Police Force's Computerised Operational Policing System (COPS). This system is used for record-keeping for all police operations, not just for criminal matters.

In this report:

- the counting units are recorded *criminal incidents* rather than recorded *offences* (except for murder and manslaughter, where the counting units are victims); and
- the data are categorised by date of *reporting* to police (or date of detection by police) rather than by date of *occurrence* of the offence (except for alleged offender data, where the data is categorised by date the alleged offender was proceeded against).

### RECORDED CRIMINAL INCIDENTS

A criminal incident is defined as an activity detected by or reported to police which:

- involved the same offender(s);
- involved the same victim(s);
- occurred at the one location;
- occurred during one uninterrupted period of time;
- falls into one offence category;
- falls into one incident type (for example, 'actual', 'attempted', 'conspiracy').

One incident may involve two offenders assaulting the same victim. This would be recorded as one assault incident. Alternatively, suppose a man reports to police that he found his neighbour in the process of damaging his car and, when confronted, the neighbour assaulted him. For such an event, two criminal incidents are recorded because two distinct offence types are involved (malicious damage to property and assault) even though the same parties were involved at the same time and in the same place.

### RECORDED VICTIMS

For murder and manslaughter only, the counting units used are victims. Under the definition of a criminal incident (same parties, same time, same place, same offence and same incident type) one murder or manslaughter incident could involve two or more persons being killed. Because of the seriousness of these offences and their relatively small numbers, it is considered to be more appropriate to count the number of victims, rather than the number of criminal incidents. Hence, where one murder incident involves a person killing six people, six murder victims are counted.

### OFFENCE CATEGORIES

The classification of offences in this report is broadly based on the Australian and New Zealand Standard Offence Classification (ANZSOC) devised by the Australian Bureau of Statistics (*ABS 2011, third edition, Cat. No. 1234.0*).

For all types of offence classifications used in the report, Appendix 3 lists the offence categories included in the classification. The original offence incident categories are those used by the NSW Police Force and do not necessarily correspond exactly with offences as defined in legislation.

### MAJOR OFFENCE CATEGORIES

Major offence categories include the most serious personal violence and property offences. The most serious of these offences is *murder* for which the incident count is the number of victims. Assault offences include the two major offence categories of *domestic violence related assault* and *non-domestic violence related assault*. All sexual offences are categorised by the two major offence types, either as *sexual assault* or *indecent assault, act of indecency and other sexual offences*.

Robbery offences are sorted into three categories by use of weapon: *robbery with a firearm*, *robbery with a weapon not a firearm* or *robbery without a weapon*. The serious theft offences in this group start with the burglary categories of *break and enter - dwelling* and *break and enter - non-dwelling* followed by *motor vehicle theft* and *steal from motor vehicle*. Other theft offences included in the 17 major offences are *steal from retail store*, *steal from dwelling*, *steal from person* and *fraud*. The final property offence listed as a major offence is *malicious damage to property*.

## APPENDIX 2: DEFINITIONS AND EXPLANATORY NOTES *continued*

### COUNTING PERIOD

Criminal incidents are included in the counting period in which they were reported to or detected by police.

In most cases criminal incidents are recorded on COPS on the day of reporting. However there may be some time delay before the incident gains the status of accepted and verified (which are necessary conditions for inclusion in this report). It is therefore possible for some updating of data to occur. That is, data extracted for a specified period of time may differ according to the date of extraction of the data.

In recent years some historic murders have been re-entered on the COPS system after being referred to the unsolved homicide squad. Murders that were first reported to NSW Police prior to the introduction of COPS in 1995 but recorded on COPS in recent years are excluded from the statistics. Murders which took place prior to 1995 but were first reported to Police in or after 1995 are included in the statistics.

### PROCEEDINGS AGAINST ALLEGED OFFENDERS

Police may proceed against alleged offenders through a variety of legal or other processes. Alleged offenders who are not legally proceeded against are not included in this report. Most alleged offenders are referred to the NSW Criminal Courts. The more serious offences are dealt with by way of a Bail Court Attendance Notice (CAN) or a No-Bail CAN. In these instances, the alleged offender is arrested, taken to a police station, fingerprinted and the details of the person and all charges are recorded. A Bail CAN is used when a bail determination is required and a No-Bail CAN is used when a bail determination is not required.

Following changes to the Bail Act in May 2014, No-Bail CANs are used almost solely for incidents of 'Breach of bail conditions' and no bail determination is required because the original determination stands until a new determination is made by the court. Alternatively a Field CAN may be issued by police at other locations. A Future CAN is used for less serious offences.

Some alleged offenders are proceeded against but diverted from the criminal court system. For many minor offences police can issue Infringement Notices. By paying the prescribed penalty the offender avoids having to go to court. Under the *Young Offenders Act 1997*, a juvenile offender can be issued with either a warning, a caution or referred to a youth justice conference.

Youth Justice Conference and cautions data in previous reports have included juvenile offenders initially proceeded against to court by Police and then referred to a conference or given a caution under the *Young Offenders Act* by the court. From the 2015 report, they are now counted as being proceeded against to court by Court Attendance Notice as that was the method of proceeding used by the Police. Consequently data in this report is not comparable with data in previously published reports. Comparable data for previous years is available on request.

Data on warnings under the *Young offenders Act*, is available from January 2010 onwards. Due to changes in how warnings are recorded, this data series can not be compared with warning data previously published. A youth justice conference is a face-to-face meeting between offenders, victims and their support persons. The offending behaviour is discussed and an outcome plan for the offender negotiated. Note that both the police and the courts can refer a young person to a youth justice conference. However, the number of alleged offenders proceeded against by way of a youth justice conference, as shown in Table 4.1, includes only police referrals to a youth justice conference.

Since mid-2008, Police have issued compliance notices for breaches of liquor licensing regulations/legislation. Commonly these are for relatively minor breaches eg fail to display regulated signs. Liquor Offence Compliance Notices have been added to the recorded crime collection from the 2015 report. Consequently data in this report is not comparable with data in previously published reports. Comparable data for all years is available on request.

Each offender or alleged offender appears only once in the table for each event. Note that multiple criminal incidents may be associated with a single event. The processes are arranged in a hierarchy with the offender or alleged offender appearing in the most serious category where multiple incidents are involved. For example if an event involves two incidents and the alleged offender is charged for one incident but receives a caution for the second incident, the alleged offender appears only in the relevant 'proceeded against to court' category.

## **APPENDIX 2: DEFINITIONS AND EXPLANATORY NOTES *continued***

### **PROCEEDINGS AGAINST ALLEGED OFFENDERS *continued***

It should be noted that in previous annual recorded crime reports, data on alleged offenders were categorised by date of reporting to police (or date the incident was detected by police). Given there can be a delay between an event being recorded by police and police commencing legal proceedings this resulted in fewer alleged offenders being counted, particularly during the last three months of the reporting period. For this reason, since the 2017 annual report, alleged offender data is categorised by the date the alleged offender was proceeded against. Therefore in Section 4 the year refers to the year in which alleged offenders were proceeded against. It does not refer to the year in which a criminal incident or incidents were reported to police. For example, if an incident was reported to police in 2016 but the alleged offender was not apprehended and charged until 2017, the alleged offender is counted in 2017. As such, Section 4 of this report is not comparable with alleged offender data published prior to the 2017 annual report. Comparable data for all years is available on request.

### **CLEARED CRIMINAL INCIDENTS**

A cleared criminal incident is one, which, in the view of police, has been satisfactorily cleared by the commencement of legal proceedings or otherwise.

An incident is cleared by the commencement of legal proceedings when police have laid a charge or an information against at least one person. The information may have been laid with a view to the issuing of a warrant, Future CAN or other process for the purpose of bringing an offender before the court.

A criminal incident is cleared other than by commencement of legal proceedings when, under normal circumstances, a charge or information would have been laid against at least one person, but, for a variety of reasons, police have been unable to make an arrest, despite knowing the identity of the offender and having sufficient evidence to support a charge. Examples of situations in which an offence may be cleared other than by charge include the following:

- . the offender is a juvenile and is cautioned;
- . the offender has died before a charge is made or information laid;
- . the offender has been committed to a psychiatric institution and is unlikely to be released;
- . there is an obstacle to charging, such as diplomatic immunity;
- . the complainant or essential witness is dead and proceedings would be aborted;
- . the offender is serving a sentence and police consider that no useful purpose would be served by prosecution.

The offence types included in these tables are those where the crime is likely to have been reported to police, rather than discovered or detected by police. Offence types where the numbers of recorded criminal incidents are influenced by police law enforcement activity (drug offences, for example) are excluded. For such offence types, the clear-up percentages are very high because clearing the offence generally occurs simultaneously with its detection (that is, an arrest is made when the crime is discovered). This report contains criminal incidents cleared within 30 and 90 days after the incident was reported to the NSW Police Force.

The clear-up status after 30 days could not be determined for any offences reported in the latest month. Hence, Table 5.1 is for the 24-month period ending one month before the quarterly reporting period. Similarly, the clear-up status after 90 days could not be determined for any offences reported in the latest three months. Hence, Table 5.2 and Figure 5.1 is for the 24-month period ending three months before the quarterly reporting period.

### **REGIONAL STATISTICS**

Statistics are provided on the number of criminal incidents (victims for murder) recorded for each of the Statistical Areas (SAs) of NSW as defined by the Australian Bureau of Statistics (ABS).

Recorded criminal incidents which occurred in correctional, detention or remand centres, however, are not counted in the SA in which the incident occurred. Appendix 4 provides maps indicating the location of each SA. Appendix 5 lists the Local Government Areas (LGAs using 2017 boundaries) within each of the SAs. Note that LGA boundaries change from time to time. A criminal incident is counted within a particular region when the location of the offence falls within that region.

For the rate calculations, specialised population data were prepared and provided to BOCSAR by the Australian Bureau of Statistics.

**APPENDIX 3: BOCSAR OFFENCES MAPPED TO POLICE INCIDENT CATEGORIES**

<b>BOCSAR offence</b>	<b>NSW Police Force incident categories</b>
<b>Homicide</b>	
Murder	Murder
Attempted murder	Murder – attempted Shoot with intent to murder
Murder accessory, conspiracy	Murder – conspiracy Murder – solicit
Manslaughter – not driving	Manslaughter
<b>Assault</b>	
	<i>Includes any of the following offences disaggregated by whether or not police have flagged the incident as domestic violence related:</i>
Domestic violence related	Actual bodily harm Assault common Grievous bodily harm (including malicious wounding) Shoot with intent other than to murder Spike drink/food
Non-domestic violence related	Actual bodily harm Assault common Grievous bodily harm (including malicious wounding) Shoot with intent other than to murder Spike drink/food
Assault Police	Assault Police officer
<b>Sexual offences</b>	
Sexual assault	Sexual assault – adult victim (16+ years old) Sexual assault – child victim, reported when adult Sexual assault – child victim, reported when child
Indecent assault, act of indecency and other sexual offences	Act of indecency Aggravated act of indecency Indecent assault – adult victim (16+ years old) Indecent assault – child victim, reported when child Indecent assault – child victim, reported when adult Bestiality Carnal knowledge Grooming/procuring Incest Indecent communication Peep or pry Wilful and obscene exposure Other sexual offence
<b>Abduction and kidnapping</b>	Kidnapping/Abduction



**APPENDIX 3: BOCSAR OFFENCES MAPPED TO POLICE INCIDENT CATEGORIES**

<b>BOCSAR offence</b>	<b>NSW Police Force incident categories</b>
<b>Robbery</b>	
Robbery without a weapon	<i>Includes any of the following offences in which no weapon was recorded:</i> Demand money with menaces Robbery Robbery with aggravation Robbery with wounding Other robbery
Robbery with a firearm	<i>Includes any of the following offences in which a firearm was recorded as a weapon:</i> Armed robbery Demand money with menaces Robbery Robbery with aggravation Robbery with wounding Other robbery
Robbery with a weapon not a firearm	<i>Includes any of the following offences in which a non firearm weapon was recorded:</i> Armed robbery Demand money with menaces Robbery Robbery with aggravation Robbery with wounding Other robbery
<b>Blackmail and extortion</b>	Extortion/Blackmail
<b>Intimidation, stalking and harassment</b>	Intimidation ( <i>includes threatening behaviour, stalking</i> ) Riot and affray Telecommunications offence ( <i>includes nuisance phone calls</i> ) Threats against Police Violent disorder
<b>Other offences against the person</b>	Labour exploitation ( <i>includes sexual servitude</i> ) Malicious damage with intent to injure/endorse Negligent act cause grievous bodily harm Other offence against the person
<b>Theft</b>	
Break and enter – dwelling	<i>Dwelling includes premises where people reside such as house, home unit, caravan, tent as well as any attachment such as garage, shed, yard and garden.</i> Break/Enter and steal Break/Enter and commit other felony Break/Enter intent to steal Break/Enter intent to commit other felony
Break and enter – non-dwelling	<i>Non-dwelling includes commercial and government premises.</i> Break/Enter and steal Break/Enter and commit other felony Break/Enter intent to steal Break/Enter intent to commit other felony

**APPENDIX 3: BOCSAR OFFENCES MAPPED TO POLICE INCIDENT CATEGORIES**

<b>BOCSAR offence</b>	<b>NSW Police Force incident categories</b>
<b>Theft continued:</b>	
Receiving or handling stolen goods	Receiving Goods in custody Possess property stolen outside NSW
Motor vehicle theft	Theft of motor cars, motor cycles, and other vehicles / vessels Rebirthing vehicles / vessels
Steal from motor vehicle	Steal from motor vehicle
Steal from retail store	Steal from retail store
Steal from dwelling	Steal from dwelling Other stealing <i>occurring in a residential dwelling</i>
Steal from person	Steal from person
Stock theft	Steal stock (Non-domestic animal)
Fraud	Company/corporate offence Computer crime Copyright/Intellectual property/Trademark Corrupt commission/practices Corrupt payment (receive or pay) Counterfeit currency Deception offence Embezzlement Fail to pay Fraudulent misappropriation Larceny clerk/servant/bailee Make/use false instrument Misappropriate cheques/funds Possess false instrument Publish false misleading statement Receiving (fraud related) Other fraud
Other theft	Steal from dwelling <i>occurring somewhere other than a residential or non-residential dwelling</i> (e.g. from hostels, motels, boarding houses etc) Steal domestic animal or bird Steal from marine vessel Steal vessel Other stealing <i>occurring somewhere other than a dwelling</i> (e.g. in outdoor/public places)
<b>Arson</b>	<i>Fire incident where classified as deliberate:</i> Bushfire Structure Vehicle (e.g. aircraft/motor vehicle/train/vessel) Other commodity
<b>Malicious damage to property</b>	Graffiti Malicious damage to property Public place – damage fountain/wall etc. Public place – damage shrine/monument

**APPENDIX 3: BOCSAR OFFENCES MAPPED TO POLICE INCIDENT CATEGORIES**

<b>BOCSAR offence</b>	<b>NSW Police Force incident categories</b>
<b>Drug offences</b>	
Possession and/or use of cocaine	Possess drug <i>where drug type is cocaine</i> Use or administer drug <i>where drug type is cocaine</i> Item/object found <i>where drug type is cocaine</i>
Possession and/or use of narcotics	Possess drug <i>where drug type is narcotics</i> Use or administer drug <i>where drug type is narcotics</i> Item/object found <i>where drug type is narcotics</i>
Possession and/or use of cannabis	Possess drug / plant <i>where drug type is cannabis</i> Use or administer drug <i>where drug type is cannabis</i> Item/object found <i>where drug type is cannabis</i>
Possession and/or use of amphetamines	Possess drug <i>where drug type is amphetamines</i> Use or administer drug <i>where drug type is amphetamines</i> Item/object found <i>where drug type is amphetamines</i>
Possession and/or use of ecstasy	Possess drug <i>where drug type is ecstasy</i> Use or administer drug <i>where drug type is ecstasy</i> Item/object found <i>where drug type is ecstasy</i>
Possession and/or use of other drugs	Possess drug <i>where drug type is not cocaine, narcotics, cannabis, amphetamines or ecstasy</i> Use or administer drug <i>where drug type is not cocaine, narcotics, cannabis, amphetamines or ecstasy</i> Item/object found <i>where drug type is not cocaine, narcotics, cannabis, amphetamines or ecstasy</i>
Dealing, trafficking in cocaine	Supply drug <i>where drug type is cocaine</i>
Dealing, trafficking in narcotics	Supply drug <i>where drug type is narcotics</i>
Dealing, trafficking in cannabis	Supply drug/plant <i>where drug/plant type is cannabis</i>
Dealing, trafficking in amphetamines	Supply drug <i>where drug type is amphetamines</i>
Dealing, trafficking in ecstasy	Supply drug <i>where drug type is ecstasy</i>
Dealing, trafficking in other drugs	Supply drug/plant <i>where drug/plant type is not cocaine, narcotics, cannabis, amphetamines or ecstasy</i>
Cultivating cannabis	Cultivation
Manufacture drug	Manufacture drug
Importing drugs	Import drug/plant
Other drug offences	Forge and/or utter prescription Possess drug utensil Other drug detection/seizure offence
<b>Prohibited and regulated weapons offences</b>	Bomb hoax or threat Discharge firearm into premises Licence offence Firearms dealer offence

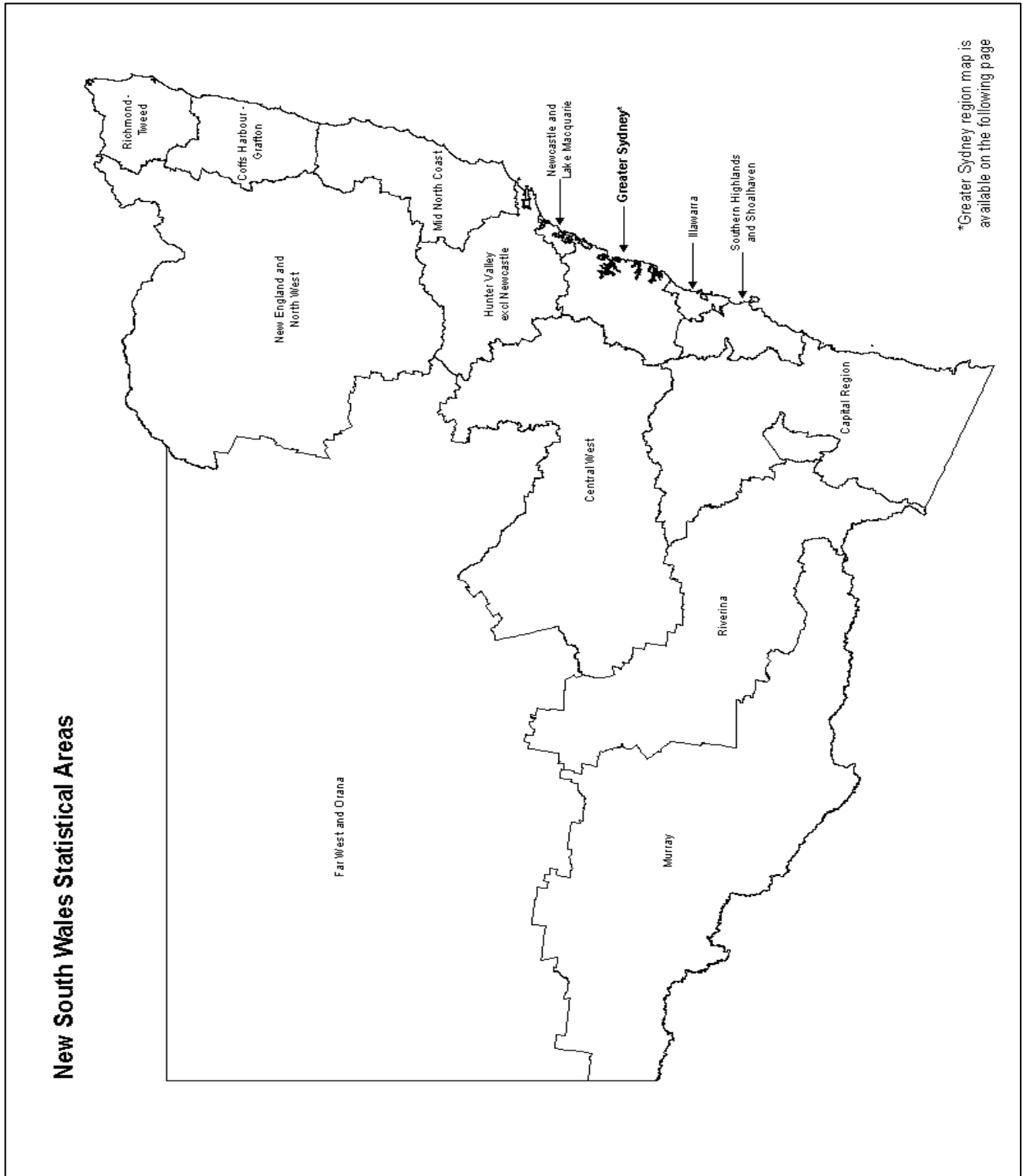
**APPENDIX 3: BOCSAR OFFENCES MAPPED TO POLICE INCIDENT CATEGORIES**

<b>BOCSAR offence</b>	<b>NSW Police Force incident categories</b>
<b>Prohibited and regulated weapons offences</b> continued:	Firearms not ensure safekeeping Improper storage of explosives Person search - Item/object found <i>where item/object is a weapon</i> Possess explosive/dangerous article Possess prohibited weapon/article Possess shortened firearm Possess whilst unlicensed Sell prohibited weapon/article Shorten firearm Trespass with firearm Unlawful handling/access/supply of explosives Unlawfully discharge firearm Use firearm under influence Use prohibited weapon/article Other explosives offence Other firearm licencing offence Other firearm offence Other prohibited weapon/article offence
<b>Disorderly conduct</b>	
Trespass	Trespass Remain inclosed lands
Offensive conduct	Offensive behaviour
Offensive language	Offensive language
Criminal intent	Armed with intent Disguised with intent Enter land with intent Intent to repeat indictable offence Possess implements
<b>Betting and gaming offences</b>	Conduct/play illegal betting Conduct/play illegal game Own/manage premises – betting Own/manage premises – gaming Other gaming offence
<b>Liquor offences</b>	Consume alcohol in alcohol-free zone Consume/possess alcohol in public by minor Licensing legislation offence: <ul style="list-style-type: none"> <li>– Offence by licensee/employee/secretary</li> <li>– Offence by minor</li> <li>– Offence by customer (not minor)</li> <li>– Supply liquor to juvenile</li> <li>– Offence against registered clubs legislation</li> </ul>
<b>Pornography offences</b>	Possess/disseminate child pornography Possess/publish indecent material
<b>Prostitution offences</b>	Soliciting/prostitution in public Prostitution – premises Prostitution – live off earnings Child prostitution Other vice offence

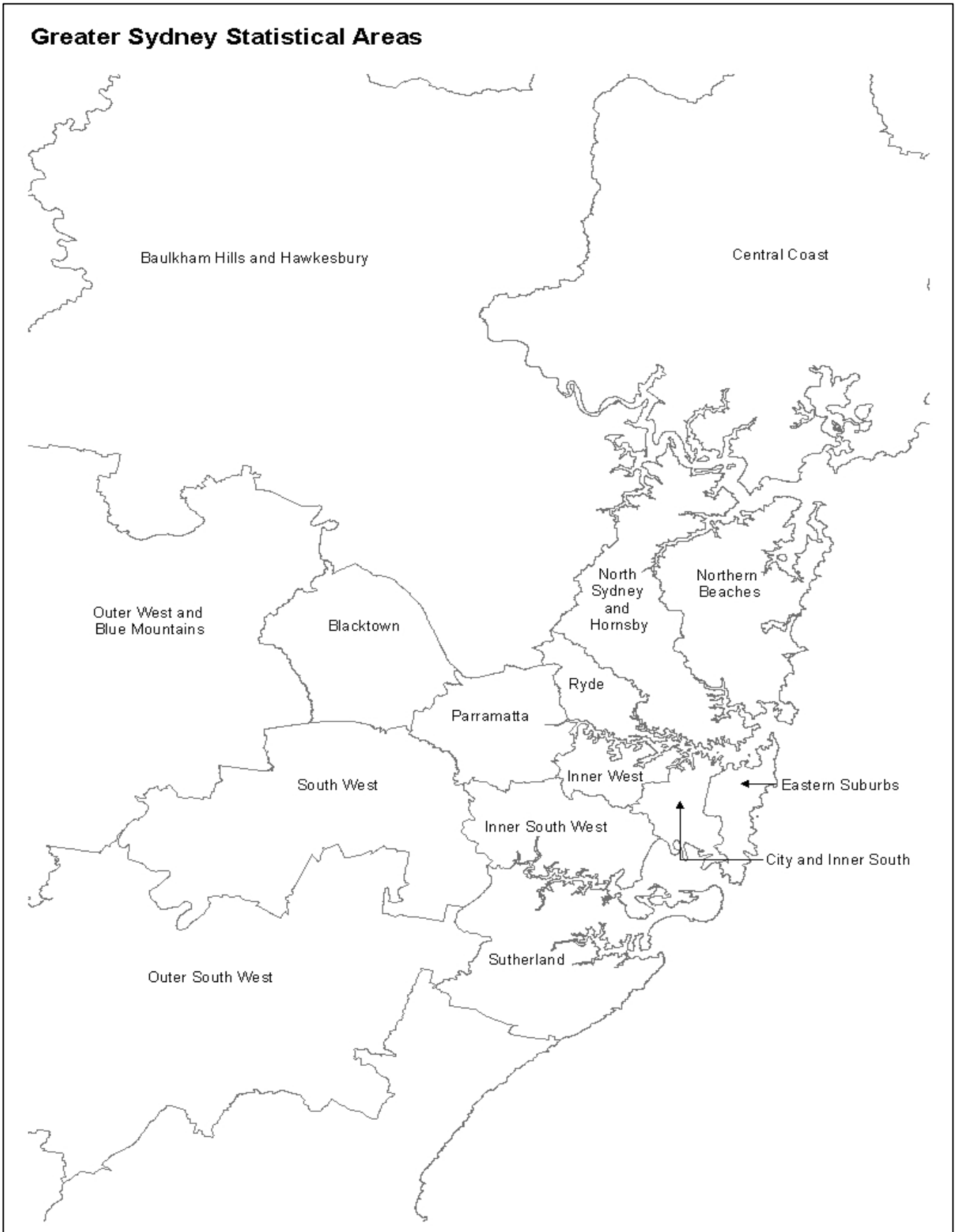
**APPENDIX 3: BOCSAR OFFENCES MAPPED TO POLICE INCIDENT CATEGORIES**

<b>BOCSAR offence</b>	<b>NSW Police Force incident categories</b>
<b>Against justice procedures</b>	
Escape Custody	Escapee – Corrective Services custody Escapee – Department of Community Services custody Escapee – Police custody Escapee – Other custody
Breach Apprehended Violence Order	Breach Apprehended Violence Order – domestic Breach Apprehended Violence Order – personal
Breach bail conditions	Breach bail conditions Breach control order
Fail to appear	Fail to appear
Resist or hinder officer	Refuse direction Refuse direction continue intoxication and disorder Refuse direction intoxicated person Refuse to be searched Refuse to produce object Resist/hinder officer
Other offences against justice procedures	Contravene Child Protection Prohibition Order (CPPO) Other judicial offence
<b>Transport regulatory offences</b>	Transport offence ( <i>includes offences on the rail network such as travelling without a valid ticket, smoking, drinking or using offensive language on a train or railway land</i> ) Buffer riding
<b>Other offences</b>	Animals – dog offences Family law offence Immigration/customs offence Obstruction Offence against transport service Other street offences (carry cutting weapon, offensive implement) Public mischief Terrorism offences Other miscellaneous offences  Offences under various acts: <i>Animals - Prevention Of Cruelty Acts</i> <i>Bush Fire Act</i> <i>Child Protection Act</i> <i>Local Government Act</i> <i>Marine/Waterway Act</i> <i>Pawnbrokers Act</i> <i>Postal Services Act</i> <i>Security Industry Act</i> <i>Sydney Harbour Bridge Act</i> <i>Tattoo Parlours Act</i>

**APPENDIX 4: NSW & GREATER SYDNEY STATISTICAL AREA MAPS**



**APPENDIX 4: NSW & GREATER SYDNEY STATISTICAL AREA MAPS**



**APPENDIX 5: LGAs IN GREATER SYDNEY STATISTICAL AREAS*****Greater Sydney Statistical Areas***

---

<b><i>Baulkham Hills and Hawkesbury</i></b> Hawkesbury* The Hills Shire*	<b><i>Blacktown</i></b> Blacktown	<b><i>Central Coast</i></b> Central Coast
<b><i>City and Inner South</i></b> Sydney*	<b><i>Eastern Suburbs</i></b> Randwick* Waverley Woollahra	<b><i>Inner South West</i></b> Bayside* Canterbury-Bankstown* Georges River
<b><i>Inner West</i></b> Burwood Canada Bay Inner West* Strathfield*	<b><i>North Sydney and Hornsby</i></b> Hornsby* Ku-ring-gai Lane Cove Mosman North Sydney Willoughby	<b><i>Northern Beaches</i></b> Northern Beaches
<b><i>Outer South West</i></b> Camden* Campbelltown* Wollondilly*	<b><i>Outer West and Blue Mountains</i></b> Blue Mountains* Penrith*	<b><i>Parramatta</i></b> Cumberland* Parramatta*
<b><i>Ryde</i></b> Hunters Hill Ryde*	<b><i>South West</i></b> Fairfield* Liverpool*	<b><i>Sutherland</i></b> Sutherland Shire*

\* These LGAs span across two or more Statistical Areas.

These LGAs are listed under the Greater Sydney Statistical Areas which contain the largest area of each LGA.



**APPENDIX 5: LGAs IN NSW REGIONAL STATISTICAL AREAS*****NSW Regional Statistical Areas***

---

***Capital Region***

Bega Valley  
Eurobodalla  
Goulburn Mulwaree  
Hilltops  
Queanbeyan-Palerang Regional  
Snowy Monaro Regional\*  
Upper Lachlan Shire  
Yass Valley\*

***Central West***

Bathurst Regional  
Bland\*  
Blayney  
Cabonne\*  
Cowra  
Forbes  
Lachlan\*  
Lithgow  
Mid-Western Regional\*  
Oberon\*  
Orange  
Parkes  
Weddin

***Coffs Harbour - Grafton***

Bellingen\*  
Clarence Valley\*  
Coffs Harbour

***Far West and Orana***

Bogan  
Bourke  
Brewarrina  
Broken Hill  
Central Darling  
Cobar  
Coonamble  
Dubbo Regional\*  
Gilgandra  
Narromine  
Unincorporated Far West  
Walgett  
Warren  
Warrumbungle Shire\*

***Hunter Valley excluding Newcastle***

Cessnock  
Dungog  
Maitland\*  
Muswellbrook  
Port Stephens\*  
Singleton\*  
Upper Hunter Shire\*

***Illawarra***

Kiama\*  
Shellharbour  
Wollongong

***Mid North Coast***

Kempsey  
Lord Howe Island  
Mid-Coast\*  
Nambucca\*  
Port Macquarie-Hastings

***Murray***

Albury  
Balranald  
Berrigan  
Edward River  
Federation\*  
Greater Hume Shire\*  
Hay  
Murray River  
Wentworth

***New England and North West***

Armidale Regional\*  
Glen Innes Severn  
Gunnedah  
Gwydir  
Inverell  
Liverpool Plains\*  
Moree Plains  
Narrabri  
Tamworth Regional  
Tenterfield  
Uralla  
Walcha

***Newcastle and Lake Macquarie***

Lake Macquarie\*  
Newcastle

***Richmond - Tweed***

Ballina  
Byron  
Kyogle  
Lismore  
Richmond Valley\*  
Tweed

***Riverina***

Carrathool\*  
Coolamon  
Cootamundra-Gundagai  
Griffith  
Junee  
Leeton  
Lockhart\*  
Murrumbidgee\*  
Narrandera  
Snowy Valleys\*  
Temora  
Wagga Wagga

***Southern Highlands and Shoalhaven***

Shoalhaven\*  
Wingecarribee\*

\* These LGAs span across two or more Statistical Areas.

These LGAs are listed under the NSW Regional Statistical Areas which contain the largest area of each LGA.

