

NEW SOUTH WALES RECORDED CRIME STATISTICS

**Quarterly Update
March 2019**

**NSW
Statistical Areas
and
Local Government Areas**

NSW Bureau of Crime Statistics and Research

ACKNOWLEDGEMENTS

The production of this report was greatly assisted by officers within the NSW Police Force. Special thanks are due to officers in Business and Technology Services and in Corporate Information, Executive Support Group. The following officers of the NSW Bureau of Crime Statistics and Research contributed significantly to the production of this report. Thanks to Darren Kwok for processing the data contained in the report, Derek Goh for preparing the report and Jessie Holmes for reviews and presentation improvements.

2019

Published by the NSW Bureau of Crime Statistics and Research
Department of Justice
Level 1
Henry Deane Building
20 Lee St
Sydney NSW 2000
Australia

Phone: + 61 (2) 8346 1100
Fax: + 61 (2) 8364 1298
Email: bcsr@justice.nsw.gov.au
Website: www.bocsar.nsw.gov.au
ISSN: 1035-9044

This report is available in pdf format on our website and may be provided in alternative formats. Please contact the Bureau on 8346 1100 or email us at bcsr@justice.nsw.gov.au.

INTRODUCTION

This report presents data on crime reported to, or detected by, the NSW Police Force from January 1995 to March 2019, with a focus on the statistical trends for the 24 months ending March 2019. The data were extracted from the Computerised Operational Policing System (COPS) of the NSW Police Force in May 2019.

The report includes an overview of trends in the most recent two-year period for major offence categories, firstly for NSW and then across NSW regions broken down to the Local Government Area (LGA) level. At the State level, for the latest 24-month period, three major offence categories have been trending upwards: murder (up 39.6%), domestic violence related assault (up 6.0%) and indecent assault, act of indecency and other sexual offences (up 5.8%). None of the 17 major offence categories were trending downwards.

The NSW graphs for rates of violent and property offences are on page 9 of the report. For violent offences using the 12-month moving average (light grey line) we can see a downward path from 2004, which has stabilised over the last 5 years but then increased over the last 2 years. The trend tests shown in Table 1.1 indicate that for the latest 24-month period, six NSW Statistical Areas have significant upward trends in violent crime: Greater Sydney (up 2.2%), Far West and Orana (up 12.6%), Mid North Coast (up 2.5%), Murray (up 13.0%), Richmond-Tweed (up 4.2%) and Riverina (up 1.8%). Only one NSW Statistical Area had a significant downward trend in violent crime: New England and North West (down 3.1%).

The property offences graph using the 6-month moving average (light grey line) indicates a strong downward path from 2000 to 2010, after which there are further declines but at a slower rate. Table 1.1 showing trend tests on the levels of property offences indicates a significant decrease over the last 5 years for NSW. For the latest 24-month period, two NSW Statistical Areas have significant upward trends in property crime: Mid North Coast (up 9.1%) and Southern Highlands and Shoalhaven (up 9.1%). No NSW Statistical Areas have significant downward trends in property crime in the latest 24-month period.

Jackie Fitzgerald

June 2019

© State of New South Wales through the Department of Justice NSW 2017. You may copy, distribute, display, download and otherwise freely deal with this work for any purpose, provided that you attribute the Department of Justice NSW as the owner. However, you must obtain permission if you wish to (a) charge others for access to the work (other than at cost), (b) include the work in advertising or a product for sale, or (c) modify the work.

CONTENTS

	ACKNOWLEDGEMENTS	2
	INTRODUCTION	3
SECTION 1:	OVERVIEW OF TRENDS IN VIOLENT AND PROPERTY CRIME	. . . 7
Figure 1.1	NSW long-term trend in violent crime	. . . 9
Figure 1.2	NSW long-term trend in property crime	. . . 9
Table 1.1	Trends in violent and property offences, over the 60 months to March 2019, NSW Statistical Areas (SAs) and NSW	. . . 10
Table 1.2	Trends in violent and property offences, over the 60 months to March 2019, NSW Statistical Areas (SAs) and NSW	. . . 11
Table 1.3	Trends in violent and property offences, over the 60 months to March 2019, NSW Local Government Areas (LGAs)	. . . 12
SECTION 2:	OVERVIEW OF TRENDS IN RECORDED CRIME, BY OFFENCE TYPE	. . . 15
Table 2.1	Trends in recorded criminal incidents for major offences, over the 60 months to March 2019, NSW	. . . 16
Table 2.2	Periodic trends in recorded criminal incidents for major offences over the 60 months to March 2019, NSW	. . . 17
Table 2.3	Number and trends in recorded criminal incidents for 62 offences, over the 24 months to March 2019, NSW	. . . 18
Table 2.4	Number and outcome of 24-month trend for major offences, NSW Local Government Areas (LGAs), all reports 2009 to March 2019	19
Figure 2.1A	Number of NSW LGAs with significant upward trends for major offences in the 24-month periods to March 2018 and March 2019	. . . 20
Figure 2.1B	Number of NSW LGAs with significant downward trends for major offences in the 24-month periods to March 2018 and March 2019	. . . 20
SECTION 3:	TRENDS, RATE COMPARISONS AND RECORDED CRIMINAL INCIDENTS FOR MAJOR OFFENCES, NSW REGIONS AND LGAS	. . . 21
Table 3.1A	Trends in recorded criminal incidents for major offences, over the 24 months to March 2019, NSW SAs	. . . 22
Table 3.1B	Ratio to NSW rate of recorded criminal incidents per 100,000 population for major offences, over the 12 months to March 2019, NSW SAs	. . . 22
Table 3.1C	Number of recorded criminal incidents for major offences, over the 12 months to March 2019, NSW SAs	. . . 23
Table 3.1D	Number of recorded criminal incidents for major offences, over the 12 months to March 2018, NSW SAs	. . . 23
Table 3.2A	Trends in recorded criminal incidents for major offences, over the 24 months to March 2019, Greater Sydney SAs	. . . 24
Table 3.2B	Ratio to NSW rate of recorded criminal incidents per 100,000 population for major offences, over the 12 months to March 2019, Greater Sydney SAs	. . . 24
Table 3.2C	Number of recorded criminal incidents for major offences, over the 12 months to March 2019, Greater Sydney SAs	. . . 25
Table 3.2D	Number of recorded criminal incidents for major offences, over the 12 months to March 2018, Greater Sydney SAs	. . . 25

SECTION 3:	TRENDS, RATE COMPARISONS AND RECORDED CRIMINAL INCIDENTS FOR MAJOR OFFENCES, NSW REGIONS AND LGAS <i>continued</i>	
Table 3.3A	Trends in recorded criminal incidents for major offences, over the 24 months to March 2019, NSW LGAs	. . . 26
Table 3.3B	Ratio to NSW rate of recorded criminal incidents per 100,000 population for major offences, over the 12 months to March 2019, NSW LGAs	. . . 28
Table 3.3C	Number of recorded criminal incidents for major offences, over the 12 months to March 2019, NSW LGAs	. . . 30
Table 3.3D	Number of recorded criminal incidents for major offences, over the 12 months to March 2018, NSW LGAs	. . . 32
SECTION 4:	METHODS OF PROCEEDINGS AGAINST ALLEGED OFFENDERS	. . . 35
Figure 4.1	Trends in referral methods for alleged offenders proceeded against to court over the 24 months to March 2019, NSW	36
Table 4.1	Number, percentage and trend in alleged offenders proceeded against by NSW Police by method of legal proceedings over the 24 months to March 2019, NSW	. . . 37
Table 4.2	Number, percentage and trend in alleged offenders proceeded against to court by NSW Police for major offences over the 24 months to March 2019, NSW	38
SECTION 5:	CLEARED CRIMINAL INCIDENTS AND WHETHER LEGAL PROCEEDINGS COMMENCED FOR SELECTED OFFENCES	. . . 39
Table 5.1	Number of recorded criminal incidents for selected offences by whether legal proceedings commenced in 30 days of reporting over the 24 months to February 2019, NSW	. . . 40
Table 5.2	Number of recorded criminal incidents for selected offences by whether legal proceedings commenced in 90 days of reporting over the 24 months to December 2018, NSW	41
Figure 5.1	Percentage of recorded criminal incidents for selected offences where legal proceedings commenced within 30 and 90 days, over the 12 months to December 2018, NSW	. . . 42
APPENDICES		43
	APPENDIX 1: TRENDS IN RECORDED CRIMINAL INCIDENTS IN NSW	. . . 44
	APPENDIX 2: DEFINITIONS AND EXPLANATORY NOTES	. . . 45
	APPENDIX 3: BOCSAR OFFENCES MAPPED TO POLICE INCIDENT CATEGORY	. . . 48
	APPENDIX 4: NSW & GREATER SYDNEY STATISTICAL AREA MAPS	. . . 55
	APPENDIX 5: LGAS IN GREATER SYDNEY STATISTICAL AREAS	. . . 57
	APPENDIX 5: LGAS IN NSW REGIONAL STATISTICAL AREAS	. . . 58

SECTION 1:

**OVERVIEW OF TRENDS
IN VIOLENT AND PROPERTY CRIME**

FIGURE 1.1: NSW LONG-TERM TREND IN VIOLENT OFFENCES*

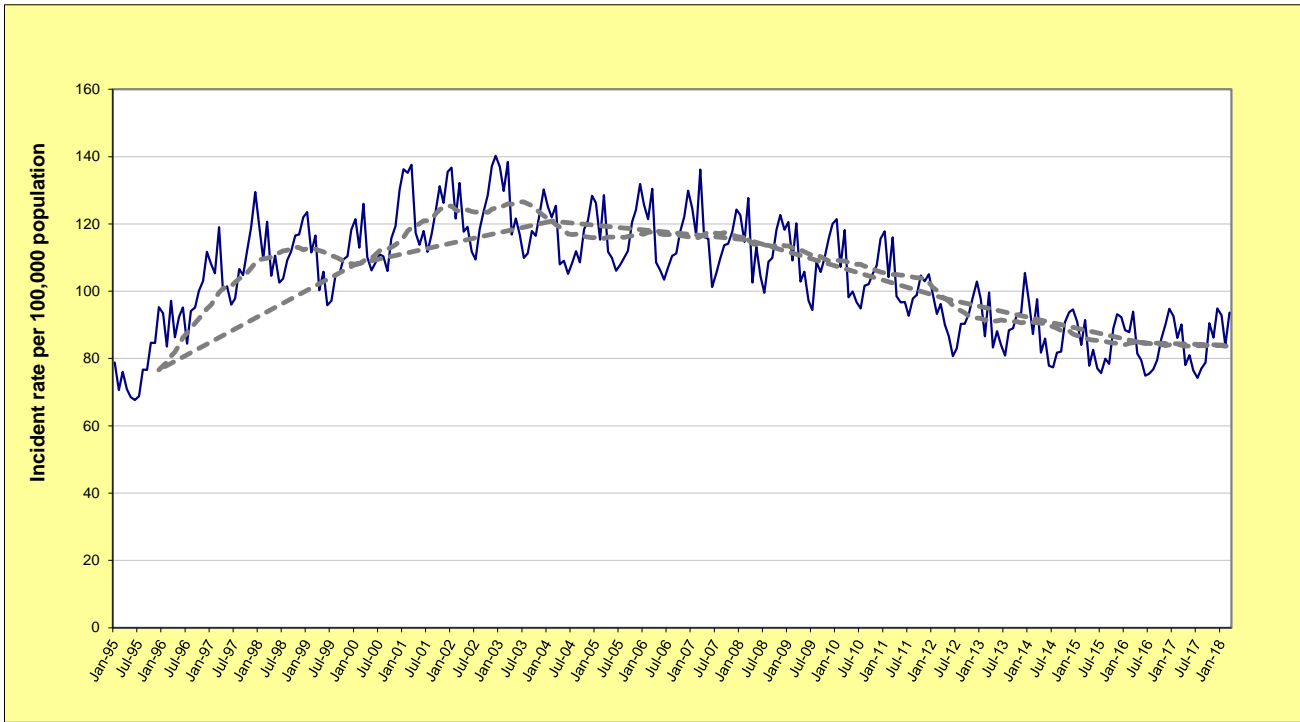
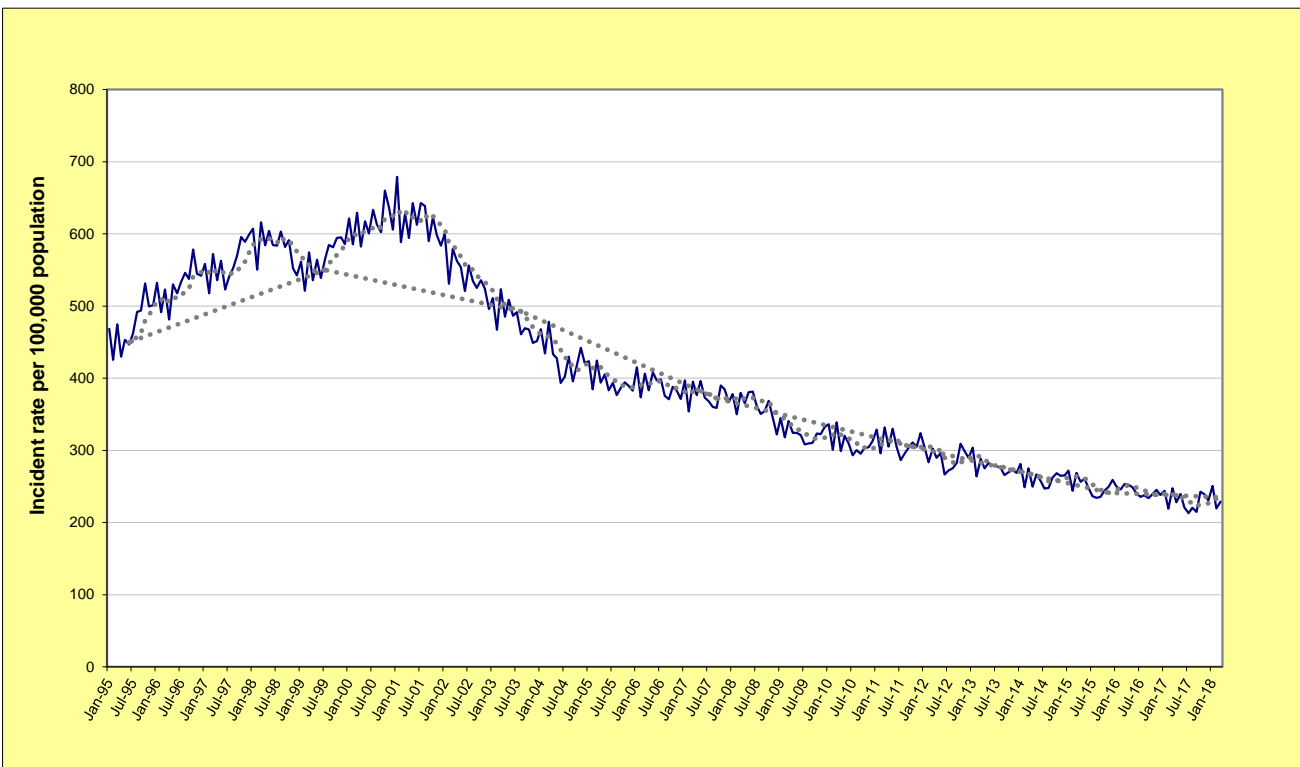


FIGURE 1.2: NSW LONG-TERM TREND IN PROPERTY OFFENCES**



* **Violent offences** include: murder, attempted murder, manslaughter, assault - domestic violence related, assault - non-domestic violence related, assault police, robbery without a weapon, robbery with a firearm, robbery with a weapon not a firearm, sexual assault and indecent assault / act of indecency / other sexual offences.

** **Property offences** include: break and enter dwelling, break and enter non-dwelling, motor vehicle theft, steal from motor vehicle, steal from retail store, steal from dwelling, steal from person, stock theft, other theft and fraud.

For further explanation of **violent offences** and **property offences**, see page 44, Note [7].

**TABLE 1.1: TRENDS[^] IN RECORDED CRIMINAL INCIDENTS, VIOLENT AND PROPERTY OFFENCES
OVER THE 60 MONTHS TO MARCH 2019, NSW STATISTICAL AREAS (SAs) AND NSW**

NSW Statistical Area	Violent Offences*			Property Offences**		
	Annual percentage change over the last 24 months	Average annual percentage change over the last 60 months	Ratio [#] to NSW rate	Annual percentage change over the last 24 months	Average annual percentage change over the last 60 months	Ratio [#] to NSW rate
Greater Sydney	2.2%	1.2%	0.9	Stable	-3.5%	0.9
Capital Region	Stable	Stable	0.9	Stable	Stable	0.8
Central West	Stable	Stable	1.4	Stable	-5.3%	1.1
Coffs Harbour - Grafton	Stable	Stable	1.3	Stable	3.3%	1.2
Far West and Orana	12.6%	Stable	2.7	Stable	Stable	2.0
Hunter Valley excluding Newcastle	Stable	3.3%	1.2	Stable	Stable	1.2
Illawarra	Stable	-3.3%	0.8	Stable	-3.0%	0.9
Mid North Coast	2.5%	Stable	1.2	9.1%	2.8%	1.2
Murray	13.0%	Stable	1.2	Stable	2.3%	1.2
New England and North West	-3.1%	Stable	1.6	Stable	Stable	1.4
Newcastle and Lake Macquarie	Stable	Stable	1.1	Stable	2.5%	1.4
Richmond - Tweed	4.2%	Stable	1.1	Stable	Stable	1.0
Riverina	1.8%	2.9%	1.4	Stable	Stable	1.3
Southern Highlands and Shoalhaven	Stable	Stable	0.9	9.1%	-4.3%	0.8
NSW	1.8%	Stable	1.0	Stable	-2.2%	1.0

[^] For further explanation of trend results, see page 44, Notes [5] and [6].

* **Violent offences** include: murder, assault - domestic violence related, assault - non-domestic violence related, assault police, robbery without a weapon, robbery with a firearm, robbery with a weapon not a firearm, sexual assault and indecent assault / act of indecency / other sexual offences.

** **Property offences** include: break and enter dwelling, break and enter non-dwelling, motor vehicle theft, steal from motor vehicle, steal from retail store, steal from dwelling, steal from person, stock theft, other theft and fraud.

For further explanation of violent offences and property offences, see page 44, Note [7].

For further explanation of rate calculation populations and the ratio to NSW rate, see page 44, Footnote 2 and Note [8].

**TABLE 1.2: TRENDS[^] IN RECORDED CRIMINAL INCIDENTS, VIOLENT AND PROPERTY OFFENCES
OVER THE 60 MONTHS TO MARCH 2019, GREATER SYDNEY STATISTICAL AREAS (SAs)**

Greater Sydney Statistical Area	Violent Offences*			Property Offences**		
	Annual percentage change over the last 24 months	Average annual percentage change over the last 60 months	Ratio [#] to NSW rate	Annual percentage change over the last 24 months	Average annual percentage change over the last 60 months	Ratio [#] to NSW rate
Baulkham Hills and Hawkesbury	Stable	Stable	0.4	Stable	-2.9%	0.5
Blacktown	5.8%	2.9%	1.4	Stable	2.2%	1.3
Central Coast	Stable	2.5%	1.2	Stable	Stable	1.0
City and Inner South	Stable	1.5%	1.9	Stable	-6.2%	2.0
Eastern Suburbs	Stable	3.3%	0.7	Stable	-4.5%	0.8
Inner South West	Stable	Stable	0.7	Stable	-7.1%	0.7
Inner West	Stable	Stable	0.5	Stable	-6.0%	0.8
North Sydney and Hornsby	Stable	3.0%	0.4	Stable	-3.0%	0.6
Northern Beaches	16.0%	Stable	0.5	Stable	Stable	0.6
Outer South West	5.1%	Stable	1.0	Stable	-2.9%	0.8
Outer West and Blue Mountains	Stable	Stable	1.2	Stable	Stable	1.1
Parramatta	Stable	Stable	0.9	Stable	-3.4%	1.0
Ryde	13.2%	7.2%	0.5	Stable	Stable	0.7
South West	4.3%	Stable	0.9	Stable	-4.0%	0.9
Sutherland	Stable	2.8%	0.6	-13.7%	-5.7%	0.5

[^] For further explanation of trend results, see page 44, Notes [5] and [6].

* **Violent offences** include: murder, assault - domestic violence related, assault - non-domestic violence related, assault police, robbery without a weapon, robbery with a firearm, robbery with a weapon not a firearm, sexual assault and indecent assault / act of indecency / other sexual offences.

** **Property offences** include: break and enter dwelling, break and enter non-dwelling, motor vehicle theft, steal from motor vehicle, steal from retail store, steal from dwelling, steal from person, stock theft, other theft and fraud.

For further explanation of violent offences and property offences, see page 44, Note [7].

[#] For further explanation of rate calculation populations and the ratio to NSW rate, see page 44, Footnote 2 and Note [8].

TABLE 1.3: TRENDS^a IN RECORDED CRIMINAL INCIDENTS, VIOLENT AND PROPERTY OFFENCES, OVER THE 60 MONTHS TO MARCH 2019, NSW LOCAL GOVERNMENT AREAS (LGAs)

NSW LGAs	Violent Offences*			Property Offences*		
	Annual percentage change over the last 24 months	Average annual percentage change over the last 60 months	Ratio [#] to NSW rate	Annual percentage change over the last 24 months	Average annual percentage change over the last 60 months	Ratio [#] to NSW rate
Albury	12.9	ns	1.5	ns	3.5	1.6
Armidale Regional	7.1	ns	1.6	ns	ns	1.6
Ballina	ns	ns	0.8	ns	3.8	0.9
Balranald	.	.	.	58.1	ns	.
Bathurst Regional	ns	ns	1.4	ns	-6.1	1.1
Bayside	8.2	6.4	0.8	ns	-4.9	0.8
Bega Valley	ns	ns	0.7	ns	ns	0.6
Bellingen	ns	ns	0.8	ns	ns	0.8
Berrigan	ns	ns	0.7	48.8	11.1	0.8
Blacktown	6.1	2.9	1.4	ns	2.2	1.3
Bland	ns	ns	0.8	ns	ns	0.5
Blayney	ns	ns	0.9	ns	ns	0.8
Blue Mountains	ns	ns	0.7	ns	ns	0.7
Bogan	ns	-16.7	.	ns	-12.5	.
Bourke	ns	ns	.	ns	-8.7	.
Brewarrina	ns	-12.2	.	ns	ns	.
Broken Hill	ns	4.4	2.4	ns	8.0	1.8
Burwood	-25.9	ns	0.5	ns	-8.4	1.2
Byron	ns	ns	1.2	ns	-5.4	1.2
Cabonne	48.6	ns	0.8	ns	ns	0.7
Camden	ns	12.5	0.8	ns	ns	0.6
Campbelltown	9.2	ns	1.3	ns	-3.1	1.1
Canada Bay	ns	ns	0.4	ns	-5.4	0.7
Canterbury-Bankstown	ns	-2.2	0.7	-8.1	-7.6	0.7
Carrathool	ns	ns	.	ns	18.5	.
Central Coast	ns	2.5	1.2	ns	ns	1.0
Central Darling	ns	ns	.	ns	-12.0	.
Cessnock	ns	ns	1.2	ns	ns	1.5
Clarence Valley	ns	ns	1.1	ns	-3.1	1.1
Cobar	ns	ns	2.1	ns	-17.5	1.0
Coffs Harbour	ns	ns	1.5	9.3	8.2	1.4
Coolamon	ns	ns	0.6	ns	ns	0.5
Coonamble	ns	ns	3.7	ns	ns	3.5
Cootamundra-Gundagai	ns	ns	1.3	ns	4.7	1.0
Cowra	ns	ns	1.3	ns	ns	1.1
Cumberland	ns	ns	0.9	ns	-3.2	0.9
Dubbo Regional	27.3	5.4	2.5	ns	ns	2.2
Dungog	ns	ns	0.8	ns	ns	0.4
Edward River	ns	ns	1.2	37.3	8.4	1.2
Eurobodalla	ns	ns	1.1	ns	ns	1.0
Fairfield	ns	ns	0.8	ns	-4.8	0.8
Federation	ns	ns	0.8	ns	ns	0.9
Forbes	31.9	ns	1.9	ns	ns	1.4
Georges River	ns	ns	0.7	ns	-5.2	0.6
Gilgandra	ns	ns	1.9	ns	-16.1	1.1
Glen Innes Severn	ns	ns	1.7	ns	ns	1.0
Goulburn Mulwaree	ns	ns	1.0	ns	5.0	0.9
Greater Hume Shire	ns	ns	0.5	ns	ns	0.5
Griffith	ns	ns	1.5	ns	-8.4	1.3
Gunnedah	ns	ns	1.2	23.8	ns	1.4
Gwydir	ns	ns	1.0	ns	12.1	0.8
Hawkesbury	ns	-3.8	0.9	9.6	-5.7	0.8
Hay	ns	ns	.	ns	ns	.
Hilltops	ns	ns	1.3	ns	ns	0.8
Hornsby	30.1	5.3	0.4	ns	ns	0.5
Hunters Hill	ns	7.2	0.5	ns	ns	0.7
Inner West	ns	ns	0.7	ns	-4.5	0.9
Inverell	ns	ns	1.8	ns	8.1	1.3
Junee	50.0	ns	0.9	ns	ns	0.6
Kempsey	ns	ns	1.7	25.1	ns	2.0
Kiama	ns	-9.3	0.3	ns	ns	0.5
Ku-ring-gai	24.9	4.3	0.2	ns	ns	0.4
Kyogle	39.8	9.8	1.6	ns	ns	0.6
Lachlan	ns	ns	1.8	ns	-14.1	1.2
Lake Macquarie	ns	1.3	0.9	ns	ns	1.1

TABLE 1.3: TRENDS[^] IN RECORDED CRIMINAL INCIDENTS, VIOLENT AND PROPERTY OFFENCES, OVER THE 60 MONTHS TO MARCH 2019, NSW LOCAL GOVERNMENT AREAS (LGAs)

NSW LGAs	Violent Offences*			Property Offences*		
	Annual percentage change over the last 24 months	Average annual percentage change over the last 60 months	Ratio [#] to NSW rate	Annual percentage change over the last 24 months	Average annual percentage change over the last 24 months	Ratio [#] to NSW rate
Lane Cove	ns	ns	0.3	ns	ns	0.6
Leeton	ns	ns	1.4	ns	6.9	1.1
Lismore	13.3	ns	1.5	ns	ns	1.1
Lithgow	ns	5.4	1.4	ns	-13.4	1.0
Liverpool	ns	ns	0.9	-5.7	-4.9	1.0
Liverpool Plains	ns	ns	1.1	ns	ns	0.7
Lockhart	ns	.	0.7	ns	ns	0.9
Lord Howe Island
Maitland	4.5	7.4	1.3	ns	4.7	1.4
Mid-Coast	ns	ns	1.1	ns	ns	1.2
Mid-Western Regional	ns	ns	1.3	ns	-6.7	0.8
Moree Plains	ns	-9.3	2.7	-26.8	ns	3.0
Mosman	ns	ns	0.3	ns	ns	0.5
Murray River	54.3	ns	0.6	ns	ns	0.9
Murrumbidgee	ns	ns	1.2	ns	ns	0.7
Muswellbrook	ns	ns	1.5	ns	-4.8	1.3
Nambucca	40.3	8.7	1.9	18.3	9.3	1.7
Narrabri	ns	ns	1.4	ns	-6.6	1.2
Narrandera	ns	7.0	1.6	-51.1	ns	0.9
Narromine	ns	ns	2.3	51.0	ns	2.5
Newcastle	ns	ns	1.3	ns	4.6	1.9
North Sydney	ns	ns	0.5	-9.4	-8.0	0.7
Northern Beaches	16.0	ns	0.5	ns	ns	0.6
Oberon	ns	ns	1.0	ns	ns	0.8
Orange	ns	ns	1.7	33.8	-3.0	1.8
Parkes	ns	ns	1.6	ns	-7.3	0.9
Parramatta	5.1	ns	0.9	ns	-2.3	1.1
Penrith	2.2	2.1	1.3	ns	ns	1.2
Port Macquarie-Hastings	6.8	ns	0.9	ns	ns	0.9
Port Stephens	ns	ns	1.1	ns	ns	0.9
Queanbeyan-Palerang Regional	ns	ns	0.7	ns	ns	0.9
Randwick	ns	4.7	0.7	ns	-2.5	0.8
Richmond Valley	ns	ns	1.5	ns	-5.6	1.0
Ryde	ns	6.8	0.5	-13.4	-3.3	0.7
Shellharbour	ns	-4.7	0.7	ns	ns	0.8
Shoalhaven	ns	ns	1.1	ns	-4.0	0.9
Singleton	ns	5.4	1.0	18.5	ns	1.2
Snowy Monaro Regional	ns	ns	0.8	ns	ns	0.6
Snowy Valleys	ns	ns	1.1	ns	14.2	1.2
Strathfield	ns	ns	0.8	ns	-7.6	1.0
Sutherland Shire	ns	ns	0.6	-13.7	-5.7	0.5
Sydney	ns	1.0	2.3	ns	-7.0	2.5
Tamworth Regional	4.7	2.6	1.6	ns	3.7	1.4
Temora	ns	ns	0.9	ns	ns	0.7
Tenterfield	ns	ns	1.4	24.8	ns	1.1
The Hills Shire	ns	ns	0.3	ns	ns	0.6
Tweed	7.6	ns	0.8	7.2	ns	0.8
Unincorporated Far West
Upper Hunter Shire	ns	10.1	0.9	ns	ns	0.8
Upper Lachlan Shire	ns	ns	0.4	ns	ns	0.4
Uralla	ns	ns	0.7	ns	ns	0.5
Wagga Wagga	2.1	6.5	1.6	ns	ns	1.7
Walcha	ns	20.5	1.8	ns	ns	0.5
Walgett	ns	ns	4.0	-16.7	-6.7	1.8
Warren	ns	ns	.	ns	ns	.
Warrumbungle Shire	ns	ns	1.3	ns	ns	0.9
Waverley	ns	3.0	0.8	ns	-4.2	1.1
Weddin	.	.	0.4	ns	ns	0.6
Wentworth	ns	ns	2.0	-23.5	ns	1.0
Willoughby	ns	3.7	0.4	ns	ns	1.0
Wingecarribee	ns	ns	0.5	ns	-5.7	0.5
Wollondilly	ns	ns	0.6	ns	ns	0.4
Wollongong	ns	ns	0.9	ns	-3.3	1.0
Woollahra	ns	ns	0.5	ns	-9.3	0.6
Yass Valley	ns	ns	0.6	ns	ns	0.4
NSW	1.8	ns	1.0	ns	-2.2	1.0

[^] For further explanation of trend results, see page 44, Notes [5] and [6].

* For further explanation of violent offences and property offences, see page 44, Note [7].

For further explanation of rate calculation populations and the ratio to NSW rate, see page 44, Footnote 2 and Note [8].

Sydney LGA can be considered a special case since the population used to calculate the rate is much lower than the population using the area for work and entertainment. This will be reflected in higher incident rates.

SECTION 2:
OVERVIEW OF TRENDS
IN RECORDED CRIME
BY OFFENCE TYPE
NSW

**TABLE 2.1: TRENDS[^] IN RECORDED CRIMINAL INCIDENTS FOR MAJOR OFFENCES
OVER THE 60 MONTHS TO MARCH 2019, NSW**

<i>Offence category</i>	<i>Trend result and annual percentage change over the last 24 months</i>	<i>Trend result and average annual percentage change over the last 60 months</i>
Murder *	Up by 39.6%	Stable
Domestic violence related assault	Up by 6.0%	Stable
Non-domestic violence related assault	Stable	Stable
Sexual assault	Stable	Up by 4.7%
Indecent assault, act of indecency and other sexual offences	Up by 5.8%	Up by 6.0%
Robbery without a weapon	Stable	Down by 5.4%
Robbery with a firearm	Stable	Down by 10.9%
Robbery with a weapon not a firearm	Stable	Down by 7.1%
Break and enter dwelling	Stable	Down by 6.2%
Break and enter non-dwelling	Stable	Down by 5.7%
Motor vehicle theft	Stable	Down by 3.0%
Steal from motor vehicle	Stable	Down by 2.8%
Steal from retail store	Stable	Up by 5.1%
Steal from dwelling	Stable	Down by 4.2%
Steal from person	Stable	Down by 9.0%
Fraud	Stable	Stable
Malicious damage to property	Stable	Down by 3.5%

[^] For further explanation of trend results, see page 44, Notes [5] and [6].

* For murder, the trend test is applied to the monthly number of recorded victims rather than criminal incidents.

TABLE 2.2: PERIODIC TRENDS[^] IN RECORDED CRIMINAL INCIDENTS FOR MAJOR OFFENCES, OVER THE 60 MONTHS TO MARCH 2019, NSW

Offence category	Trend result and annual percentage change				
	Apr 2013 - Mar 2015	Apr 2014 - Mar 2016	Apr 2015 - Mar 2017	Apr 2016 - Mar 2018	Apr 2017 - Mar 2019
Murder *	Stable	Stable	Stable	Stable	39.6%
Domestic violence related assault	Stable	Stable	Stable	Stable	6.0%
Non-domestic violence related assault	Stable	Stable	2.6%	Stable	Stable
Sexual assault	Stable	Stable	4.7%	8.8%	Stable
Indecent assault, act of indecency and other sexual offences	Stable	9.7%	Stable	7.4%	5.8%
Robbery without a weapon	-17.6%	-23.0%	Stable	Stable	Stable
Robbery with a firearm	-17.4%	-37.6%	Stable	Stable	Stable
Robbery with a weapon not a firearm	-15.5%	-21.6%	-10.2%	10.7%	Stable
Break and enter dwelling	Stable	Stable	Stable	Stable	Stable
Break and enter non-dwelling	-9.1%	-6.9%	Stable	-9.8%	Stable
Motor vehicle theft	Stable	Stable	Stable	Stable	Stable
Steal from motor vehicle	-4.4%	-5.0%	Stable	Stable	Stable
Steal from retail store	Stable	8.4%	5.7%	Stable	Stable
Steal from dwelling	2.9%	Stable	Stable	Stable	Stable
Steal from person	-12.2%	Stable	-15.1%	Stable	Stable
Fraud	Stable	Stable	Stable	Stable	Stable
Malicious damage to property	-10.7%	Stable	Stable	Stable	Stable

[^] For further explanation of trend results, see page 44, Notes [5] and [6].

* For murder, the trend test is applied to the monthly number of recorded victims rather than criminal incidents.

TABLE 2.3: NUMBER AND TRENDS[^] IN RECORDED CRIMINAL INCIDENTS FOR 62 OFFENCES OVER THE 24 MONTHS TO MARCH 2019, NSW

Offence Category		Number of recorded criminal incidents		Trend [^] over the last 24 months	
		over the 12 months to March 2018	over the 12 months to March 2019	Trend test result	Percentage change
Homicide	Murder*	53	74	Up	39.6%
	Attempted murder	17	20	.	
	Murder accessory, conspiracy	2	2	.	
	Manslaughter*	9	10	.	
Assault	Domestic violence related assault	28,359	30,063	Up	6.0%
	Non-domestic violence related assault	32,360	31,413	Stable	
	Assault Police	2,355	2,452	Stable	
Sexual offences	Sexual assault	5,878	5,933	Stable	
	Indecent assault, act of indecency and other sexual offences	7,668	8,116	Up	5.8%
Abduction and kidnapping		211	200	Stable	
Robbery	Robbery without a weapon	1,468	1,514	Stable	
	Robbery with a firearm	130	171	Stable	
	Robbery with a weapon not a firearm	900	860	Stable	
Blackmail and extortion		94	111	Stable	
Intimidation, stalking and harassment		31,270	32,350	Up	3.5%
Other offences against the person**		n.a.	1,103	n.c.	
Theft	Break and enter dwelling	27,366	26,045	Stable	
	Break and enter non-dwelling	10,356	10,091	Stable	
	Receiving or handling stolen goods	7,560	7,924	Stable	
	Motor vehicle theft	13,001	13,265	Stable	
	Steal from motor vehicle	39,090	37,637	Stable	
	Steal from retail store	24,627	25,303	Stable	
	Steal from dwelling	19,359	18,910	Stable	
	Steal from person	4,557	4,160	Stable	
	Stock theft	445	449	Stable	
	Fraud	50,007	51,838	Stable	
	Other theft	27,323	26,688	Stable	
Arson		5,919	5,092	Down	-14.0%
Malicious damage to property		60,469	58,007	Stable	
Drug offences	Possession and/or use of cocaine	2,125	2,289	Up	7.7%
	Possession and/or use of narcotics	975	1,032	Stable	
	Possession and/or use of cannabis	18,125	17,106	Down	-5.6%
	Possession and/or use of amphetamines	6,682	7,244	Up	8.4%
	Possession and/or use of ecstasy	2,795	2,831	Stable	
	Possession and/or use of other drugs	4,442	5,217	Up	17.4%
	Dealing, trafficking in cocaine	775	798	Stable	
	Dealing, trafficking in narcotics	222	661	Stable	
	Dealing, trafficking in cannabis	830	1,056	Stable	
	Dealing, trafficking in amphetamines	1,920	1,733	Stable	
	Dealing, trafficking in ecstasy	801	550	Stable	
	Dealing, trafficking in other drugs	363	463	Stable	
	Cultivating cannabis	1,158	1,241	Stable	
	Manufacture drug	72	61	Stable	
	Importing drugs	82	66	Stable	
Other drug offences	5,247	5,946	Up	13.3%	
Prohibited and regulated weapons offences		13,105	14,479	Up	10.5%
Disorderly conduct	Trespass	10,011	9,952	Stable	
	Offensive conduct	5,069	4,567	Stable	
	Offensive language	3,152	2,625	Down	-16.7%
	Criminal intent	2,237	2,303	Up	3.0%
Betting and gaming offences		64	153	Up	139.1%
Liquor offences		11,157	11,395	Stable	
Pornography offences		628	622	Stable	
Prostitution offences		51	24	Stable	
Against justice procedures	Escape custody	161	174	Stable	
	Breach Apprehended Violence Order	14,974	16,410	Up	9.6%
	Breach bail conditions	42,472	42,878	Stable	
	Fail to appear	546	507	Stable	
	Resist or hinder officer	6,229	6,053	Stable	
Other offences against justice procedures		579	797	Stable	
Transport regulatory offences		125,957	112,858	Down	-10.4%
Other offences		15,556	14,625	Stable	

[^] For further explanation of trend results, see page 44, Notes [5] and [6].

* For murder and manslaughter incidents, the trend test is applied to the monthly number of recorded victims rather than criminal incidents.

** Due to classification changes, comparable figures are not available in this time period for this offence.

TABLE 2.4: NUMBER AND OUTCOME[^] OF 24-MONTH TREND TESTS FOR MAJOR OFFENCES, NSW LOCAL GOVERNMENT AREAS (LGAs), ALL REPORTS 2011 TO MARCH 2019

Year	Final month for 24-month trend test	Number of LGAs	Number of trend tests	Stable trends (%)	Downward trends (%)	Upward trends (%)
2011	March	130	1,250	86.0	8.2	5.8
	June	130	1,244	86.4	8.8	4.7
	September	130	1,251	84.9	11.5	3.6
	December	130	1,241	86.0	9.1	4.9
2012	March	130	1,250	86.2	5.7	8.2
	June	130	1,236	86.8	7.3	5.9
	September	130	1,240	85.9	9.5	4.6
	December	130	1,246	85.6	7.9	6.6
2013	March	130	1,238	85.2	6.9	7.8
	June	130	1,232	84.9	8.6	6.5
	September	130	1,240	83.5	11.0	5.6
	December	130	1,236	84.4	11.1	4.5
2014	March	130	1,228	84.0	9.9	6.1
	June	130	1,228	82.5	13.7	3.8
	September	130	1,227	80.0	17.2	2.9
	December	130	1,227	85.8	9.9	4.2
2015	March	130	1,224	86.2	9.0	4.8
	June	130	1,229	86.7	9.6	3.7
	September	130	1,220	86.2	10.8	3.0
	December	130	1,224	87.7	8.2	4.2
2016	March	130	1,225	85.7	6.3	8.0
	June	130	1,220	83.9	9.3	6.8
	September	130	1,220	83.1	11.6	5.2
	December	130	1,219	87.0	7.2	5.7
2017	March	130	1,225	88.0	5.6	6.4
	June	130	1,216	88.7	5.9	5.4
	September	130	1,224	84.6	11.2	4.2
	December	130	1,223	86.8	8.9	4.3
2018	March	130	1,223	87.2	7.0	5.7
	June	130	1,218	86.8	8.1	5.1
	September	130	1,219	85.9	10.7	3.4
	December	130	1,218	88.0	6.2	5.8
2019	March	130	1,216	86.5	5.0	8.5

[^] This table summarises the aggregate outcomes of statistical tests for significant upward or downward trends in the number of recorded criminal incidents in major offence categories over a 24-month period across all NSW LGAs with a population of 3,000 or more. The trend test used is Kendall's rank-order correlation test. A trend test was not performed if there were fewer than 20 incidents in either of the two years for the period in question, hence no trend tests for **murder** were calculated for this table. These tests were carried out on 17 major offence categories.

FIGURE 2.1A: NUMBER OF NSW LGAs WITH SIGNIFICANT UPWARD TRENDS[^], MAJOR OFFENCES, APR 16 TO MAR 18 and APR 17 TO MAR 19

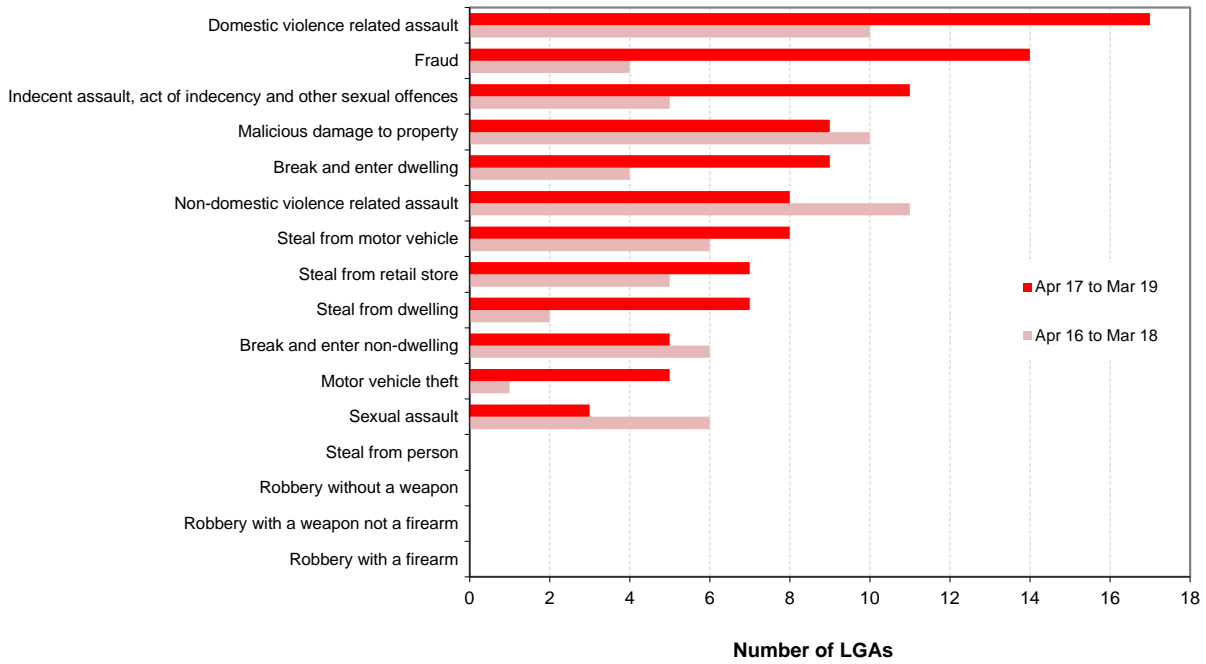
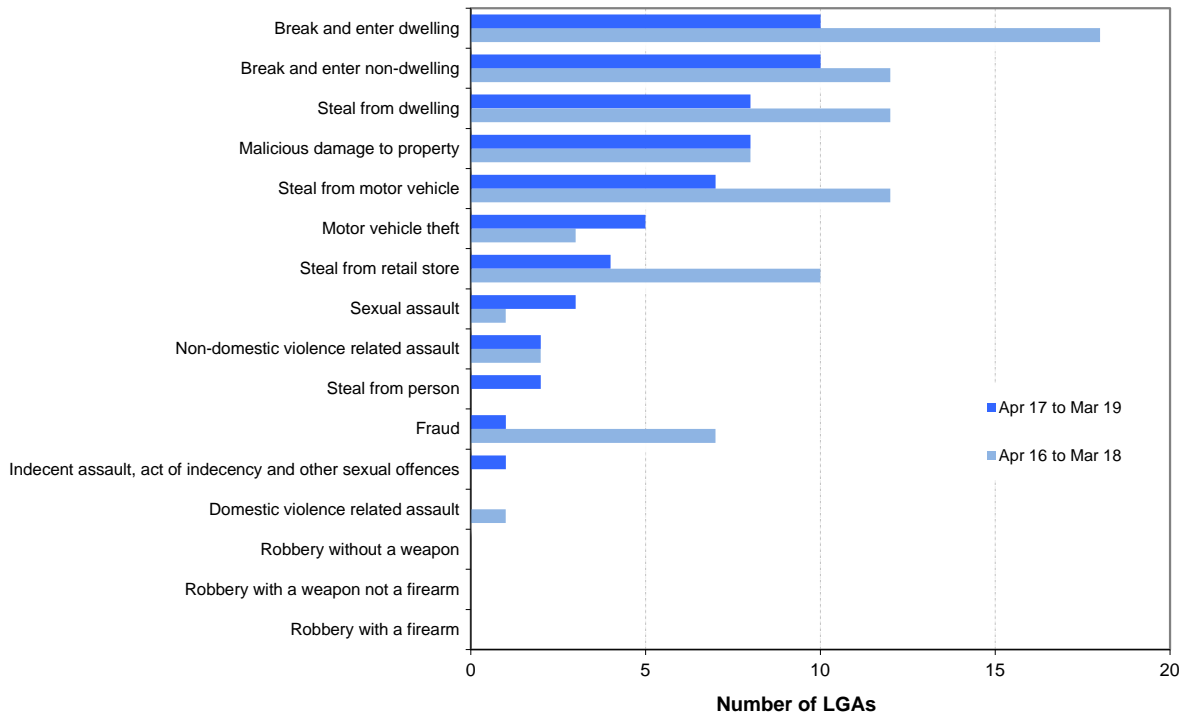


FIGURE 2.1B: NUMBER OF NSW LGAs WITH SIGNIFICANT DOWNWARD TRENDS[^], MAJOR OFFENCES, APR 16 TO MAR 18 and APR 17 TO MAR 19



[^] For further explanation of trend results, see page 44, Notes [5] and 6.

SECTION 3:

**TRENDS, RATE COMPARISONS AND
RECORDED CRIMINAL INCIDENTS
FOR MAJOR OFFENCES
NSW REGIONS AND LGAS**

TABLE 3.1A: TRENDS[^] IN RECORDED CRIMINAL INCIDENTS FOR MAJOR OFFENCES OVER THE 24 MONTHS TO MARCH 2019, NSW SAs

NSW Statistical Area	Murder *	Domestic violence related assault	Non-domestic violence related assault	Sexual assault	Indecent assault, act of indecency and other sexual offences	Robbery without a weapon	Robbery with a firearm	Robbery with a weapon not a firearm	Break and enter dwelling	Break and enter non-dwelling	Motor vehicle theft	Steal from motor vehicle	Steal from retail store	Steal from dwelling	Steal from person	Fraud	Malicious damage to property
Greater Sydney	ns	6.3	ns	ns	4.8	ns	ns	ns	-8.1	ns	ns	ns	ns	ns	ns	ns	ns
Capital Region		ns	ns	ns	ns				ns	ns	ns	ns	ns	ns		ns	ns
Central West		ns	6.5	ns	ns				ns	ns	ns	ns	ns	ns	ns	ns	ns
Coffs Harbour - Grafton		ns	ns	ns	ns			ns	ns	ns	ns	26.9	62.7	ns	ns	ns	ns
Far West and Orana		26.8	ns	ns	ns			ns	ns	ns	19.7	ns	ns	10.5	ns	21.5	ns
Hunter Valley excluding Newcastle		ns	ns	ns	ns	ns		ns	ns	ns	ns	-16.5	23.4	10.2	ns	ns	ns
Illawarra		4.6	ns	ns	ns	ns		ns	ns	ns	ns	ns	ns	ns	-30.3	25.7	ns
Mid North Coast		6.4	ns	ns	ns	ns		ns	ns	ns	ns	ns	ns	ns	ns	30.5	ns
Murray		ns	ns	ns	ns			ns	ns	ns	ns	ns	ns	ns	ns	ns	ns
New England and North West		5.1	ns	ns	ns	ns		ns	ns	ns	ns	ns	ns	-16.7	ns	ns	ns
Newcastle and Lake Macquarie		ns	ns	ns	ns	ns		ns	ns	-8.3	ns	ns	ns	ns	ns	ns	-12.1
Richmond - Tweed		22.7	ns	ns	ns	ns		ns	ns	ns	ns	ns	ns	ns	ns	ns	ns
Riverina		ns	ns	ns	36.2			ns	ns	ns	ns	ns	ns	ns	ns	21.2	ns
Southern Highlands and Shoalhaven		23.1	ns	-36.1	ns			ns	ns	ns	ns	ns	ns	ns	ns	ns	ns
NSW	39.6	6.0	ns	ns	5.8	ns	ns	ns	ns	ns	ns	ns	ns	ns	ns	ns	ns

[^] For further explanation of **trend results**, see page 44, Notes [5] and [6].

* The trend test for Greater Sydney and NSW on the offence of murder is for the number of victims, not incidents.

TABLE 3.1B: RATIO TO NSW RATE[^] OF RECORDED CRIMINAL INCIDENTS PER 100,000 POPULATION FOR MAJOR OFFENCES OVER THE 12 MONTHS TO MARCH 2019, NSW SAs

NSW Statistical Area	Murder *	Domestic violence related assault	Non-domestic violence related assault	Sexual assault	Indecent assault, act of indecency and other sexual offences	Robbery without a weapon	Robbery with a firearm	Robbery with a weapon not a firearm	Break and enter dwelling	Break and enter non-dwelling	Motor vehicle theft	Steal from motor vehicle	Steal from retail store	Steal from dwelling	Steal from person	Fraud	Malicious damage to property
Greater Sydney	0.8	0.9	0.9	0.8	0.8	1.2	1.1	1.0	0.8	0.7	0.8	0.9	1.0	0.8	1.2	1.1	0.8
Capital Region	0.9	0.8	0.9	1.0	1.2	0.3	0.8	0.6	0.9	1.0	0.9	0.9	0.8	1.0	0.2	0.5	1.0
Central West	1.0	1.4	1.4	1.6	1.4	0.9	0.4	0.7	1.6	1.6	1.2	1.1	0.9	1.4	0.6	0.8	1.5
Coffs Harbour - Grafton	1.5	1.3	1.2	1.6	1.4	1.2	1.0	1.6	1.4	1.7	1.3	1.3	1.2	1.4	0.7	1.0	1.3
Far West and Orana	0.0	3.6	2.1	2.2	2.2	0.7	1.6	2.2	3.5	4.1	2.2	2.3	1.5	2.4	1.3	1.0	2.9
Hunter Valley excluding Newcastle	0.8	1.3	1.0	1.5	1.3	0.6	0.8	0.9	1.3	1.7	1.6	1.0	1.2	1.6	0.6	0.9	1.2
Illawarra	1.4	0.8	0.8	0.9	0.8	0.8	1.0	1.2	0.9	0.8	1.1	1.1	1.2	0.9	0.4	0.7	1.0
Mid North Coast	1.9	1.2	1.1	1.6	1.3	0.8	0.8	1.1	1.6	2.4	1.2	1.0	0.9	1.7	0.6	0.9	1.2
Murray	2.7	1.2	1.2	1.3	1.4	0.9	1.2	0.8	1.4	2.3	1.3	1.3	1.2	1.6	0.5	0.7	1.3
New England and North West	0.0	1.7	1.4	1.9	1.6	0.9	0.0	1.0	2.4	2.0	1.3	1.6	1.2	1.8	0.5	0.7	1.9
Newcastle and Lake Macquarie	2.6	1.0	1.2	1.3	1.2	0.7	1.5	1.6	1.4	1.4	1.8	1.8	1.4	1.5	1.0	1.3	1.4
Richmond - Tweed	1.3	1.1	1.1	1.3	1.2	0.6	0.4	0.7	1.0	1.2	1.2	1.1	0.6	1.2	0.8	0.7	1.1
Riverina	2.0	1.6	1.3	1.3	1.5	0.3	1.1	0.7	2.1	2.1	1.6	1.3	1.1	1.5	0.5	0.8	1.6
Southern Highlands and Shoalhaven	0.7	0.9	0.8	0.8	1.2	0.4	0.6	0.5	0.8	1.0	0.7	0.8	0.9	0.8	0.3	0.7	1.0
NSW	1.0	1.0	1.0	1.0	1.0	1.0	1.0	1.0	1.0	1.0	1.0	1.0	1.0	1.0	1.0	1.0	1.0

[^] For further explanation of **rate calculation populations** and the **ratio to NSW rate**, see page 44, Footnote 2 and Note [8].

* The rate calculations on the offence of murder is for the number of victims, not incidents.

TABLE 3.1C: NUMBER OF RECORDED CRIMINAL INCIDENTS FOR MAJOR OFFENCES, OVER THE 12 MONTHS TO MARCH 2019, NSW SAs

<i>NSW Statistical Area</i>	Murder *	Domestic violence related assault	Non-domestic violence related assault	Sexual assault	Indecent assault, act of indecency and other sexual offences	Robbery without a weapon	Robbery with a firearm	Robbery with a weapon not a firearm	Break and enter dwelling	Break and enter non-dwelling	Motor vehicle theft	Steal from motor vehicle	Steal from retail store	Steal from dwelling	Steal from person	Fraud	Malicious damage to property
Greater Sydney	39	16,999	17,718	3,063	4,378	1,154	119	545	12,843	4,325	7,088	21,113	15,940	9,769	3,264	36,780	31,085
Capital Region	2	676	779	173	269	12	4	15	709	291	324	927	553	535	18	746	1,653
Central West	2	1,108	1,154	257	314	36	2	17	1,140	444	434	1,139	594	689	66	1,145	2,349
Coffs Harbour - Grafton	2	676	671	168	201	32	3	25	627	311	307	840	519	481	50	919	1,328
Far West and Orana	0	1,584	974	191	261	16	4	28	1,351	612	432	1,275	557	674	80	781	2,493
Hunter Valley excluding Newcastle	2	1,381	1,081	301	376	29	5	26	1,169	585	752	1,357	1,024	1,071	88	1,549	2,444
Illawarra	4	926	948	207	261	50	7	41	917	319	579	1,601	1,165	647	69	1,500	2,247
Mid North Coast	4	1,015	964	259	286	35	4	27	1,191	673	460	1,096	615	899	73	1,229	1,999
Murray	3	530	578	117	167	21	3	10	570	346	252	757	450	448	31	542	1,151
New England and North West	0	1,230	1,071	269	313	32	0	21	1,498	487	409	1,469	747	810	49	918	2,545
Newcastle and Lake Macquarie	9	1,429	1,736	367	479	48	12	64	1,691	667	1,125	3,129	1,623	1,301	193	3,078	3,723
Richmond - Tweed	3	1,006	1,070	239	306	27	2	19	798	395	486	1,315	508	703	107	1,150	1,940
Riverina	3	956	808	161	256	10	4	13	1,116	436	425	1,000	549	583	43	811	1,881
Southern Highlands and Shoalhaven	1	543	493	94	195	12	2	8	425	198	191	618	459	300	28	670	1,100
NSW	74	30,063	31,413	5,933	8,116	1,514	171	860	26,045	10,091	13,265	37,637	25,303	18,910	4,160	51,838	58,007

* For murder the count given is for the number of victims, not incidents.

TABLE 3.1D: NUMBER OF RECORDED CRIMINAL INCIDENTS FOR MAJOR OFFENCES, OVER THE 12 MONTHS TO MARCH 2018, NSW SAs

<i>NSW Statistical Area</i>	Murder *	Domestic violence related assault	Non-domestic violence related assault	Sexual assault	Indecent assault, act of indecency and other sexual offences	Robbery without a weapon	Robbery with a firearm	Robbery with a weapon not a firearm	Break and enter dwelling	Break and enter non-dwelling	Motor vehicle theft	Steal from motor vehicle	Steal from retail store	Steal from dwelling	Steal from person	Fraud	Malicious damage to property
Greater Sydney	31	15,996	18,091	2,989	4,178	1,131	93	594	13,978	4,447	7,156	22,303	15,769	10,036	3,521	36,155	31,200
Capital Region	1	728	839	222	229	10	0	11	633	285	306	945	545	537	24	797	1,839
Central West	3	1,116	1,084	270	323	18	2	16	1,051	455	376	997	533	718	65	1,054	2,449
Coffs Harbour - Grafton	0	746	835	160	219	16	2	21	679	379	307	662	319	534	74	831	1,312
Far West and Orana	1	1,249	997	184	276	15	0	16	1,309	461	361	1,188	487	610	63	643	2,315
Hunter Valley excluding Newcastle	0	1,378	1,132	291	334	23	5	24	1,309	633	749	1,626	830	972	83	1,522	2,775
Illawarra	1	885	1,064	231	234	51	9	46	958	400	551	1,807	1,124	748	99	1,193	2,387
Mid North Coast	0	954	976	225	299	41	1	27	1,006	620	404	937	689	915	91	942	2,244
Murray	2	480	538	101	127	14	2	4	568	282	229	893	337	426	32	524	1,283
New England and North West	4	1,170	1,287	228	272	42	3	33	1,615	621	468	1,469	797	972	81	993	3,066
Newcastle and Lake Macquarie	1	1,481	1,781	395	489	49	7	55	1,676	727	1,082	3,372	1,629	1,299	233	3,009	4,235
Richmond - Tweed	3	820	1,202	208	286	25	4	18	807	403	442	1,188	532	695	121	1,098	2,046
Riverina	3	908	855	168	188	19	0	29	1,312	452	390	1,222	602	620	48	669	2,037
Southern Highlands and Shoalhaven	1	441	531	147	183	11	2	6	465	189	179	480	434	277	22	567	1,195
NSW	53	28,359	32,360	5,878	7,668	1,468	130	900	27,366	10,356	13,001	39,090	24,627	19,359	4,557	50,007	60,469

* For murder the count given is for the number of victims, not incidents.

TABLE 3.2A: TRENDS[^] IN RECORDED CRIMINAL INCIDENTS FOR MAJOR OFFENCES OVER THE 24 MONTHS TO MARCH 2019, GREATER SYDNEY SAs

Greater Sydney Statistical Area	Murder *	Domestic violence related assault	Non-domestic violence related assault	Sexual assault	Indecent assault, act of indecency and other sexual offences	Robbery without a weapon	Robbery with a firearm	Robbery with a weapon not a firearm	Break and enter dwelling	Break and enter non-dwelling	Motor vehicle theft	Steal from motor vehicle	Steal from retail store	Steal from dwelling	Steal from person	Fraud	Malicious damage to property
Baulkham Hills and Hawkesbury	.	ns	ns	ns	44.7	.	.	.	ns	57.3	ns	ns	ns	ns	ns	ns	ns
Blacktown	.	10.7	ns	ns	12.5	ns	.	ns	ns	24.1	ns	ns	ns	ns	-11.1	ns	6.6
Central Coast	.	ns	ns	ns	ns	ns	.	ns	ns	ns	ns	ns	ns	ns	ns	ns	ns
City and Inner South	.	ns	ns	ns	ns	ns	.	ns	ns	ns	ns	6.5	-8.0	ns	ns	ns	ns
Eastern Suburbs	.	ns	ns	ns	ns	ns	.	.	ns	ns	ns	ns	ns	ns	ns	ns	ns
Inner South West	.	ns	ns	ns	ns	ns	.	ns	ns	ns	ns	-13.4	ns	ns	ns	ns	ns
Inner West	.	-17.5	ns	ns	ns	ns	.	ns	-11.3	ns	ns	ns	ns	ns	ns	ns	ns
North Sydney and Hornsby	.	ns	ns	ns	ns	ns	.	.	-8.7	ns	ns	-19.2	ns	-20.1	ns	ns	ns
Northern Beaches	.	19.4	ns	ns	ns	ns	.	.	ns	ns	ns	ns	25.1	ns	ns	ns	17.1
Outer South West	.	7.0	ns	ns	21.2	ns	.	ns	ns	-16.9	ns	13.5	ns	ns	ns	13.9	ns
Outer West and Blue Mountains	.	ns	ns	ns	ns	ns	.	ns	ns	29.9	ns	ns	ns	ns	ns	ns	ns
Parramatta	.	ns	7.3	ns	ns	ns	.	ns	ns	ns	ns	ns	ns	ns	ns	ns	ns
Ryde	.	ns	ns	ns	ns	.	.	.	-30.6	ns	ns	ns	-24.2	ns	ns	ns	-14.0
South West	.	12.7	ns	ns	ns	ns	.	ns	-24.1	-27.9	ns	ns	ns	ns	ns	ns	ns
Sutherland	.	ns	ns	ns	33.9	.	.	.	-22.2	-32.8	ns	-28.6	ns	ns	ns	ns	ns

[^] For further explanation of **trend results**, see page 44, Notes [5] and [6].

TABLE 3.2B: RATIO TO NSW RATE[^] OF RECORDED CRIMINAL INCIDENTS PER 100,000 POPULATION FOR MAJOR OFFENCES OVER THE 12 MONTHS TO MARCH 2019, GREATER SYDNEY SAs

Greater Sydney Statistical Area	Murder *	Domestic violence related assault	Non-domestic violence related assault	Sexual assault	Indecent assault, act of indecency and other sexual offences	Robbery without a weapon	Robbery with a firearm	Robbery with a weapon not a firearm	Break and enter dwelling	Break and enter non-dwelling	Motor vehicle theft	Steal from motor vehicle	Steal from retail store	Steal from dwelling	Steal from person	Fraud	Malicious damage to property
Baulkham Hills and Hawkesbury	0.4	0.4	0.3	0.5	0.5	0.3	0.2	0.1	0.6	0.5	0.5	0.5	0.4	0.5	0.3	0.7	0.4
Blacktown	0.6	1.6	1.2	1.1	1.1	2.3	1.5	1.9	1.3	0.9	1.3	1.6	1.3	1.1	1.3	1.5	1.3
Central Coast	0.3	1.3	1.1	1.1	1.2	0.7	0.8	0.8	0.9	0.9	1.2	1.0	0.9	0.9	0.8	1.0	1.2
City and Inner South	0.6	1.1	2.6	1.3	1.6	3.9	1.7	2.4	0.9	1.3	1.0	1.1	2.9	1.6	6.6	2.4	1.4
Eastern Suburbs	1.1	0.6	0.9	0.6	0.7	0.6	0.5	0.5	0.6	0.3	0.7	0.7	1.0	0.9	1.2	1.0	0.7
Inner South West	0.9	0.8	0.6	0.6	0.5	1.1	1.4	0.9	0.6	0.4	0.8	0.7	0.4	0.5	0.5	0.9	0.7
Inner West	1.0	0.4	0.6	0.6	0.6	1.0	0.6	0.7	0.7	0.7	0.6	0.7	0.7	0.8	1.0	1.2	0.6
North Sydney and Hornsby	0.2	0.3	0.4	0.6	0.6	0.7	0.3	0.5	0.6	0.5	0.3	0.4	1.0	0.6	0.6	0.8	0.5
Northern Beaches	0.4	0.4	0.6	0.6	0.6	0.5	0.5	0.5	0.4	0.4	0.5	0.6	0.7	0.6	0.4	0.7	0.7
Outer South West	0.8	1.3	0.7	1.2	1.1	0.8	2.0	0.9	0.7	0.6	0.9	0.9	1.2	0.8	0.6	0.8	0.9
Outer West and Blue Mountains	0.7	1.3	1.0	1.3	1.2	1.1	0.9	1.0	1.0	1.1	1.1	1.2	1.1	1.0	1.1	1.2	1.2
Parramatta	1.3	0.9	0.9	0.7	0.7	1.3	1.8	1.3	1.0	0.7	1.0	1.1	0.9	0.8	1.3	1.3	0.7
Ryde	2.2	0.5	0.4	0.4	0.6	0.5	0.7	0.5	0.7	0.6	0.4	0.6	0.7	0.5	0.6	1.0	0.5
South West	1.5	1.1	0.7	0.8	0.8	1.3	1.6	1.2	0.7	0.5	1.0	1.0	0.8	0.7	0.9	1.0	0.8
Sutherland	0.0	0.6	0.6	0.4	0.6	0.4	0.2	0.2	0.4	0.3	0.5	0.5	0.7	0.5	0.4	0.6	0.7

[^] For further explanation of **rate calculation populations** and the **ratio to NSW rate**, see page 44, Footnote 2 and Note [8].

* The rate calculations on the offence of murder is for the number of victims, not incidents.

TABLE 3.2C: NUMBER OF RECORDED CRIMINAL INCIDENTS FOR MAJOR OFFENCES, OVER THE 12 MONTHS TO MARCH 2019, GREATER SYDNEY SAs

Greater Sydney Statistical Area	Murder *	Domestic violence related assault	Non-domestic violence related assault	Sexual assault	Indecent assault, act of indecency and other sexual offences	Robbery without a weapon	Robbery with a firearm	Robbery with a weapon not a firearm	Break and enter dwelling	Break and enter non-dwelling	Motor vehicle theft	Steal from motor vehicle	Steal from retail store	Steal from dwelling	Steal from person	Fraud	Malicious damage to property
Baulkham Hills and Hawkesbury	1	354	311	96	136	14	1	3	451	162	194	543	317	288	33	1,077	716
Blacktown	2	2,234	1,697	298	413	159	12	74	1,492	432	796	2,729	1,461	939	255	3,613	3,524
Central Coast	1	1,680	1,437	275	408	44	6	30	1,056	397	702	1,631	950	724	139	2,211	2,907
City and Inner South	2	1,430	3,648	339	589	265	13	91	1,002	587	595	1,844	3,219	1,358	1,210	5,451	3,689
Eastern Suburbs	3	635	986	141	201	31	3	16	578	114	339	959	913	615	177	1,920	1,463
Inner South West	5	1,949	1,565	269	335	126	18	60	1,195	343	823	2,026	881	792	173	3,658	2,981
Inner West	3	486	727	134	189	58	4	24	746	263	319	1,107	716	596	162	2,423	1,305
North Sydney and Hornsby	1	500	622	183	255	60	3	23	928	279	226	917	1,328	574	135	2,311	1,616
Northern Beaches	1	455	632	123	166	24	3	15	378	151	212	758	618	379	61	1,227	1,298
Outer South West	2	1,337	814	251	320	42	12	28	650	207	404	1,232	1,032	511	81	1,454	1,872
Outer West and Blue Mountains	2	1,597	1,310	301	383	67	6	36	1,096	439	585	1,784	1,117	802	187	2,460	2,870
Parramatta	6	1,722	1,786	250	341	121	19	70	1,574	445	822	2,536	1,327	935	343	3,992	2,570
Ryde	4	358	345	54	123	17	3	10	426	151	136	528	438	233	61	1,240	699
South West	6	1,745	1,295	276	373	108	15	59	980	277	743	1,971	1,125	729	198	2,893	2,414
Sutherland	0	517	543	73	146	18	1	6	291	78	192	548	498	294	49	850	1,161

* For murder the count given is for the number of victims, not incidents.

TABLE 3.2D: NUMBER OF RECORDED CRIMINAL INCIDENTS FOR MAJOR OFFENCES, OVER THE 12 MONTHS TO MARCH 2018, GREATER SYDNEY SAs

Greater Sydney Statistical Area	Murder *	Domestic violence related assault	Non-domestic violence related assault	Sexual assault	Indecent assault, act of indecency and other sexual offences	Robbery without a weapon	Robbery with a firearm	Robbery with a weapon not a firearm	Break and enter dwelling	Break and enter non-dwelling	Motor vehicle theft	Steal from motor vehicle	Steal from retail store	Steal from dwelling	Steal from person	Fraud	Malicious damage to property
Baulkham Hills and Hawkesbury	0	341	364	96	94	10	1	4	442	103	164	643	327	280	34	999	665
Blacktown	5	2,018	1,713	285	367	141	9	85	1,550	348	805	2,943	1,266	935	287	3,477	3,305
Central Coast	4	1,622	1,471	285	412	58	5	37	1,051	385	678	1,614	830	765	163	2,239	3,048
City and Inner South	3	1,340	3,779	322	665	207	13	89	970	643	564	1,731	3,500	1,288	1,312	5,722	3,388
Eastern Suburbs	2	599	1,043	143	189	46	5	15	588	144	331	853	968	648	190	1,930	1,472
Inner South West	6	1,769	1,610	261	305	120	9	61	1,220	368	880	2,339	989	797	183	3,559	3,042
Inner West	1	589	740	121	181	62	3	39	841	244	359	1,169	718	585	179	2,362	1,505
North Sydney and Hornsby	1	456	670	157	247	38	2	17	1,016	348	238	1,135	1,121	718	163	2,137	1,647
Northern Beaches	1	381	576	104	122	24	1	8	450	188	219	917	494	437	91	1,208	1,108
Outer South West	2	1,249	849	214	264	45	5	42	753	249	383	1,085	936	498	80	1,277	1,964
Outer West and Blue Mountains	1	1,619	1,345	315	369	72	3	43	1,117	338	649	1,808	1,069	798	170	2,375	2,890
Parramatta	2	1,718	1,665	288	356	168	18	65	1,700	453	828	2,783	1,281	1,013	351	3,851	2,610
Ryde	0	272	323	77	122	10	4	7	614	136	132	533	578	283	65	1,154	813
South West	1	1,549	1,345	230	376	117	15	77	1,292	384	719	1,982	1,099	676	190	2,969	2,508
Sutherland	2	474	598	91	109	13	0	5	374	116	207	768	593	315	63	896	1,235

* For murder the count given is for the number of victims, not incidents.

**TABLE 3.3A: TRENDS* IN RECORDED CRIMINAL INCIDENTS FOR MAJOR OFFENCES
OVER THE 24 MONTHS TO MARCH 2019, NSW LGAs**

NSW LGA	Murder*	Domestic violence related assault	Non-domestic violence related assault	Sexual assault	Indecent assault, act of indecency and other sexual offences	Robbery without a weapon	Robbery with a firearm	Robbery with a weapon not a firearm	Break and enter dwelling	Break and enter non-dwelling	Motor vehicle theft	Steal from motor vehicle	Steal from retail store	Steal from dwelling	Steal from person	Fraud	Malicious damage to property
Lane Cove	.	ns	ns	-35.6	ns	ns	ns	ns	ns	.	44.7	ns
Leeton	.	ns	ns	.	ns	.	.	.	ns	ns	ns	ns	.	ns	.	ns	ns
Lismore	.	36.7	ns	ns	34.3	.	.	.	ns	ns	ns	ns	ns	ns	.	52.0	-20.9
Lithgow	.	ns	ns	.	ns	.	.	.	ns	ns	ns	ns	ns	ns	.	ns	ns
Liverpool	.	ns	ns	ns	ns	ns	.	ns	ns	-27.4	ns	-9.7	ns	ns	ns	ns	ns
Liverpool Plains	.	ns	ns	ns	ns	.	ns	ns
Lockhart
Lord Howe Island
Maitland	.	ns	ns	ns	ns	.	.	.	ns	ns	ns	-24.7	38.6	ns	ns	ns	-19.5
Mid-Coast	.	1.5	ns	ns	ns	.	.	.	ns	ns	ns	ns	ns	ns	ns	ns	ns
Mid-Western Regional	.	ns	14.5	ns	ns	ns	ns	ns	ns	ns	.	ns	ns
Moree Plains	.	ns	ns	ns	-37.6	-40.5	-39.5	ns	ns	-36.4	.	45.6	ns
Mosman	.	ns	ns	ns	.	.	ns	ns	.	.	ns	ns
Murray River	.	.	ns	76.0	ns	.	ns	.	ns	.	ns	ns
Murrumbidgee	.	ns
Muswellbrook	.	ns	ns	ns	ns	.	.	.	ns	ns	ns	-44.1	ns	33.9	.	70.0	ns
Nambucca	.	ns	65.3	ns	ns	.	.	.	ns	ns	ns	ns	ns	.	.	97.7	ns
Narrabri	.	ns	ns	103.6	ns	ns	ns	ns	ns	.	ns	ns
Narrandera	.	ns	ns	-68.7	.	.	ns	ns
Narromine	.	25.4	ns	77.2	ns	.	33.3	.	ns	.	108.7	ns
Newcastle	.	ns	ns	ns	-16.3	ns	.	ns	ns	-11.6	ns	ns	ns	ns	ns	ns	ns
North Sydney	.	ns	ns	50.0	ns	.	.	.	ns	ns	ns	-32.9	ns	-28.7	ns	ns	ns
Northern Beaches	.	19.4	ns	ns	ns	ns	.	.	ns	ns	ns	ns	25.1	ns	ns	ns	17.1
Oberon	.	ns	ns	ns
Orange	.	ns	ns	ns	ns	.	.	.	ns	ns	ns	62.6	ns	44.6	.	29.1	ns
Parkes	.	ns	ns	ns	ns	.	.	.	ns	-40.4	ns	ns	ns	ns	.	ns	-22.4
Parramatta	.	ns	ns	ns	ns	ns	.	ns	ns	ns	ns	ns	ns	ns	ns	ns	ns
Penrith	.	ns	ns	ns	ns	ns	.	ns	ns	26.0	-12.4	ns	ns	ns	ns	ns	ns
Port Macquarie-Hastings	.	ns	ns	ns	60.3	.	.	.	ns	ns	ns	ns	ns	ns	.	49.7	ns
Port Stephens	.	ns	ns	ns	ns	.	.	.	ns	ns	ns	ns	ns	ns	.	ns	ns
Queanbeyan-Palerang Regional	.	ns	ns	ns	ns	.	.	.	ns	ns	ns	ns	ns	ns	.	ns	ns
Randwick	.	ns	ns	ns	16.2	.	.	.	ns	ns	ns	ns	ns	ns	ns	ns	ns
Richmond Valley	.	ns	ns	ns	ns	.	.	.	25.5	ns	16.7	43.2	ns	ns	.	ns	ns
Ryde	.	39.2	ns	ns	ns	.	.	.	-35.4	ns	ns	ns	-30.1	ns	ns	ns	ns
Shellharbour	.	ns	ns	ns	ns	.	.	.	18.2	ns	ns	ns	ns	ns	.	20.0	ns
Shoalhaven	.	28.2	ns	-40.4	ns	.	.	.	ns	ns	ns	ns	ns	19.6	.	ns	ns
Singleton	.	ns	ns	ns	ns	.	.	.	ns	ns	ns	ns	ns	61.3	.	ns	33.1
Snowy Monaro Regional	.	ns	ns	ns	.	.	ns	.	ns	.	-27.6	ns
Snowy Valleys	.	ns	ns	.	ns	.	.	.	-41.9	ns	ns	ns	ns	.	.	ns	ns
Strathfield	.	ns	ns	.	38.5	.	.	.	-29.5	ns	ns	ns	ns	ns	ns	ns	ns
Sutherland Shire	.	ns	ns	ns	33.9	.	.	.	-22.2	-32.8	ns	-28.3	ns	ns	ns	ns	ns
Sydney	.	ns	ns	ns	ns	ns	.	ns	ns	ns	ns	7.0	-10.0	ns	ns	ns	11.1
Tamworth Regional	.	21.1	ns	44.1	ns	.	.	.	ns	ns	ns	ns	ns	ns	.	ns	ns
Temora	.	.	ns	ns
Tenterfield	.	45.9	ns	64.0	ns	.	.	ns
The Hills Shire	.	ns	ns	ns	50.9	.	.	.	ns	ns	ns	ns	ns	ns	ns	ns	ns
Tweed	.	16.6	ns	ns	ns	.	.	.	ns	ns	ns	ns	ns	ns	ns	ns	ns
Unincorporated Far West
Upper Hunter Shire	.	87.1	ns	ns	ns	ns	ns	.	ns	.	ns	ns
Upper Lachlan Shire	ns
Uralla	ns
Wagga Wagga	.	ns	ns	ns	39.2	.	.	.	ns	ns	ns	ns	ns	ns	ns	ns	ns
Walcha
Walgett	.	ns	ns	ns	ns	.	ns	.	-39.6	.	ns	-32.3
Warren	.	ns	ns	ns
Warrumbungle Shire	.	ns	ns	ns	.	.	ns	.	ns	.	ns	ns
Waverley	.	ns	ns	-34.6	ns	.	.	.	ns	.	ns	ns	ns	ns	ns	ns	ns
Weddin
Wentworth	.	ns	ns	ns	.	ns	ns	.	ns	.	.	ns
Willoughby	.	ns	ns	ns	ns	.	.	.	ns	ns	ns	-9.6	ns	ns	ns	9.9	ns
Wingecarribee	.	ns	-25.2	ns	ns	.	.	.	ns	-20.4	ns	ns	53.0	-24.2	.	ns	ns
Wollondilly	.	ns	ns	ns	113.6	.	.	.	ns	ns	ns	ns	ns	ns	.	ns	-28.6
Wollongong	.	11.1	ns	ns	ns	ns	.	ns	ns	ns	ns	ns	ns	-19.2	-30.4	27.9	ns
Woollahra	.	ns	ns	ns	ns	.	.	.	ns	.	ns	ns	ns	ns	ns	ns	ns
Yass Valley	.	ns	ns	ns	.	.	ns	ns
NSW	###	6.0	ns	ns	5.8	ns	ns	ns	ns	ns	ns	ns	ns	ns	ns	ns	ns

^ For further explanation of trend results, see page 44, Notes [5] and [6].

* There were no LGAs with 20 murder victims, hence no trend tests were reported. The trend test for NSW on the offence of murder is for the number of victims, not incidents.

TABLE 3.3B: RATIO NSW RATE OF RECORDED CRIMINAL INCIDENTS PER 100,000 POPULATION FOR MAJOR OFFENCES OVER THE 12 MONTHS TO MARCH 2019, NSW LGAs

NSW LGA	Murder*	Domestic violence related assault	Non-domestic violence related assault	Sexual assault	Indecent assault, act of indecency and other sexual offences	Robbery without a weapon	Robbery with a firearm	Robbery with a weapon not a firearm	Break and enter dwelling	Break and enter non-dwelling	Motor vehicle theft	Steal from motor vehicle	Steal from retail store	Steal from dwelling	Steal from person	Fraud	Malicious damage to property
Albury	2.0	1.4	1.7	1.3	1.6	1.8	0.9	1.0	1.9	2.1	1.5	2.1	2.3	1.8	0.8	0.9	1.7
Armidale Regional	.	1.7	1.5	2.0	2.1	1.4	.	1.8	2.5	2.6	1.3	2.1	1.3	1.9	0.7	0.9	1.8
Ballina	2.4	0.7	0.7	1.1	0.8	0.4	.	0.2	1.1	1.3	0.9	1.1	0.7	1.4	0.3	0.6	0.9
Balranald
Bathurst Regional	.	1.3	1.6	1.4	1.3	1.1	.	0.4	1.7	0.7	0.8	1.3	1.0	1.1	1.0	1.0	1.5
Bayside	0.6	0.9	0.8	0.4	0.6	1.0	1.4	0.5	0.6	0.4	0.8	0.8	0.7	0.7	1.0	1.0	0.7
Bega Valley	6.2	0.7	0.6	1.2	1.1	0.2	.	0.5	0.5	1.3	0.7	0.6	0.4	0.8	0.1	0.4	0.7
Bellingen	.	0.8	0.6	1.8	0.7	.	.	1.4	0.7	2.0	1.1	0.7	0.4	1.2	.	0.7	0.7
Berrigan	.	0.6	0.5	1.2	1.6	.	.	.	0.6	3.5	0.8	0.9	0.5	1.3	.	0.4	0.8
Blacktown	0.6	1.6	1.2	1.1	1.1	2.3	1.5	1.9	1.2	0.9	1.3	1.6	1.3	1.1	1.3	1.5	1.3
Bland	.	0.7	0.8	1.3	0.6	.	.	.	0.7	1.0	0.5	0.0	0.1	0.7	.	0.7	0.9
Blayney	.	0.7	1.0	0.9	1.2	0.7	.	1.2	1.6	2.3	0.7	0.5	0.3	0.8	.	0.5	0.8
Blue Mountains	.	0.7	0.6	1.0	1.0	0.5	0.6	0.2	0.7	0.5	0.5	1.0	0.6	0.7	0.5	0.6	1.2
Bogan
Bourke
Brewarrina
Broken Hill	.	3.0	2.0	1.5	2.0	0.3	.	2.6	3.6	3.6	1.4	2.0	1.1	2.8	0.5	1.0	2.8
Burwood	2.7	0.3	0.6	0.5	0.5	2.5	1.2	1.4	0.7	0.9	0.5	0.6	2.4	0.9	1.6	1.6	0.6
Byron	.	0.9	1.5	1.3	1.5	0.2	.	.	0.6	1.6	0.9	1.2	0.8	1.3	2.0	0.9	1.2
Cabonne	.	0.8	0.6	1.5	1.4	.	.	.	0.9	1.9	1.3	0.5	0.2	0.8	0.1	0.4	0.7
Camden	.	1.1	0.5	0.7	0.6	0.1	.	0.4	0.4	0.4	0.7	0.6	0.7	0.5	0.1	0.7	0.7
Campbelltown	1.3	1.5	0.9	1.5	1.4	1.3	2.5	1.3	0.9	0.6	1.1	1.2	1.6	1.0	0.9	1.0	1.2
Canada Bay	.	0.3	0.4	0.5	0.5	0.3	0.5	0.5	0.6	0.6	0.6	0.7	0.4	0.5	0.6	1.0	0.4
Canterbury-Bankstown	1.2	0.8	0.7	0.7	0.6	1.1	1.7	1.1	0.7	0.5	0.9	0.8	0.4	0.5	0.4	0.9	0.7
Carrathool
Central Coast	0.3	1.3	1.1	1.1	1.2	0.7	0.8	0.8	0.9	0.9	1.2	1.0	0.9	0.9	0.8	1.0	1.2
Central Darling
Cessnock	.	1.4	0.9	1.7	1.4	0.6	2.4	1.1	1.8	2.0	3.2	1.7	0.9	2.0	0.5	1.0	1.2
Clarence Valley	4.1	1.0	1.2	1.3	0.9	0.2	.	0.9	1.1	1.4	0.9	0.9	1.0	1.7	0.6	1.0	1.4
Cobar	.	2.2	2.0	2.0	2.9	.	.	.	1.2	3.0	2.1	0.8	0.2	0.4	0.4	0.9	2.6
Coffs Harbour	.	1.5	1.3	1.8	1.9	2.1	1.8	2.2	1.6	1.9	1.6	1.6	1.4	1.3	0.9	1.1	1.3
Coolamon	.	0.6	0.5	0.6	1.1	.	.	.	0.6	1.4	0.8	0.3	0.1	0.6	.	0.3	0.6
Coonamble	.	5.2	2.9	2.3	3.1	.	.	4.5	9.4	9.3	2.4	2.9	1.9	4.6	3.3	1.3	4.7
Cootamundra-Gundagai	.	1.5	1.2	1.3	1.6	.	.	.	1.1	1.8	0.5	0.6	0.7	1.3	0.2	1.2	1.2
Cowra	.	1.1	1.5	0.8	1.8	0.4	.	0.7	1.9	2.2	1.5	0.8	0.8	1.3	0.6	0.7	1.7
Cumberland	0.5	1.0	0.9	0.6	0.6	1.4	2.0	1.3	0.9	0.6	1.1	1.1	0.5	0.7	0.9	1.3	0.7
Dubbo Regional	.	3.2	1.9	2.0	2.1	1.2	1.8	3.0	3.5	3.8	2.7	3.0	2.0	2.2	1.6	1.1	3.0
Dungog	.	0.8	0.7	1.4	0.8	.	.	.	0.4	0.4	0.6	0.3	0.1	0.7	0.2	0.4	0.5
Edward River	.	1.5	0.8	1.5	1.2	0.6	5.1	1.0	1.4	2.4	0.8	1.1	0.6	2.0	.	0.6	1.4
Eurobodalla	.	1.1	1.2	1.1	0.9	0.3	2.4	0.7	1.5	1.2	0.9	1.0	1.4	1.1	0.0	0.5	1.3
Fairfield	2.0	1.0	0.7	0.8	0.7	1.7	2.2	1.3	0.4	0.4	1.0	0.9	0.5	0.5	0.8	1.0	0.7
Federation	.	0.6	1.0	0.9	0.9	.	.	0.7	0.8	2.6	1.0	0.6	0.3	1.8	0.5	0.4	0.8
Forbes	.	2.2	1.9	1.7	1.8	0.5	.	.	2.5	5.1	1.0	1.1	0.8	1.6	0.4	0.8	1.6
Georges River	0.7	0.8	0.6	0.5	0.5	1.1	0.9	0.8	0.6	0.4	0.7	0.6	0.6	0.5	0.7	0.9	0.6
Gilgandra	.	2.6	1.6	1.6	1.8	.	.	.	1.7	2.8	1.3	1.0	0.5	1.8	0.9	0.7	1.7
Glen Innes Severn	.	1.4	2.0	2.1	1.6	0.6	.	.	1.3	1.6	0.8	0.5	1.4	1.8	0.6	0.4	1.5
Goulburn Mulwaree	.	0.8	1.0	1.1	1.9	0.3	.	0.3	0.9	0.8	0.8	0.7	1.3	1.0	0.1	0.8	1.1
Greater Hume Shire	.	0.5	0.4	1.6	0.9	.	.	.	0.8	1.0	0.8	0.4	.	0.7	0.5	0.4	0.5
Griffith	.	2.1	1.1	1.2	1.1	1.0	1.7	1.0	1.5	2.9	1.6	1.2	1.4	1.3	0.3	0.8	1.4
Gunnedah	.	1.1	1.4	1.3	0.8	0.4	.	.	2.4	1.7	2.1	1.6	1.0	2.1	0.3	0.7	1.7
Gwydir	.	1.4	0.6	1.5	1.1	.	.	.	1.0	1.2	1.3	1.2	0.1	1.3	0.4	0.1	0.6
Hawkesbury	1.6	0.9	0.8	1.5	1.1	0.5	0.7	0.3	0.7	1.4	0.9	0.7	0.8	0.7	0.4	0.8	0.9
Hay
Hilltops	.	1.4	1.3	1.6	1.5	0.3	.	0.5	0.8	1.0	0.8	0.6	0.7	1.6	0.2	0.5	1.5
Hornsby	1.4	0.3	0.4	0.6	0.7	0.5	.	0.3	0.4	0.5	0.3	0.5	0.8	0.3	0.5	0.7	0.5
Hunters Hill	7.2	0.3	0.8	0.4	0.7	.	.	.	0.9	1.0	0.7	0.7	0.4	0.5	0.5	0.9	0.7
Inner West	0.5	0.5	0.8	0.8	0.8	1.1	0.9	1.0	0.8	0.7	0.7	0.9	0.7	1.1	1.0	1.2	0.9
Inverell	.	2.1	1.4	2.0	2.2	1.2	.	0.5	2.3	1.3	0.7	1.6	1.2	2.0	0.4	0.6	2.0
June	16.3	0.9	1.0	0.8	0.7	.	.	1.4	0.9	1.3	0.5	0.3	0.2	0.8	.	0.2	1.2
Kempsey	.	1.9	1.5	1.9	1.1	1.6	1.6	2.8	4.2	3.8	2.5	1.3	1.7	3.1	1.5	1.0	1.9
Kiama	.	0.4	0.3	0.2	0.1	0.2	.	0.8	0.5	1.0	0.5	0.4	0.2	0.4	0.2	0.5	0.6
Ku-ring-gai	.	0.2	0.2	0.4	0.4	0.5	.	0.7	0.8	0.4	0.1	0.3	0.2	0.5	0.3	0.6	0.3
Kyogle	.	1.6	1.4	1.8	2.4	0.6	.	1.0	0.9	1.0	1.3	0.8	0.2	0.9	.	0.4	1.2
Lachlan	.	2.0	1.3	2.1	1.6	2.5	7.4	.	1.5	4.5	1.3	1.1	0.4	2.1	0.3	0.3	2.3
Lake Macquarie	2.6	0.9	0.8	1.2	1.2	0.4	0.7	0.9	1.0	1.2	1.5	1.2	1.2	1.0	0.5	1.1	1.1

TABLE 3.3B: RATIO NSW RATE* OF RECORDED CRIMINAL INCIDENTS PER 100,000 POPULATION FOR MAJOR OFFENCES OVER THE 12 MONTHS TO MARCH 2019, NSW LGAs

NSW LGA	Murder*	Domestic violence related assault	Non-domestic violence related assault	Sexual assault	Indecent assault, act of indecency and other sexual offences	Robbery without a weapon	Robbery with a firearm	Robbery with a weapon not a firearm	Break and enter dwelling	Break and enter non-dwelling	Motor vehicle theft	Steal from motor vehicle	Steal from retail store	Steal from dwelling	Steal from person	Fraud	Malicious damage to property
Lane Cove	.	0.3	0.2	0.6	0.8	0.5	1.2	.	0.7	0.8	0.4	0.6	0.3	0.6	0.3	0.9	0.5
Leeton	.	1.7	1.2	0.7	1.9	.	.	.	2.2	1.8	1.2	1.1	0.5	1.8	0.3	0.6	1.1
Lismore	.	1.4	1.6	1.8	2.0	1.3	.	1.5	1.3	1.1	1.6	1.2	0.9	1.5	1.0	0.8	1.2
Lithgow	.	1.3	1.5	1.4	1.4	0.2	.	.	1.0	1.1	1.0	0.5	0.6	1.4	0.6	1.0	1.4
Liverpool	1.5	1.1	0.8	1.0	0.9	1.0	0.6	1.2	0.9	0.6	1.1	1.0	1.1	0.8	1.0	1.0	0.8
Liverpool Plains	.	1.2	1.2	1.2	0.5	.	.	1.2	0.9	0.5	1.1	0.7	0.7	1.2	0.2	0.5	1.4
Lockhart	.	0.5	0.6	1.6	1.2	.	.	.	0.9	2.4	1.1	1.3	0.2	0.4	.	0.4	0.9
Lord Howe Island
Maitland	.	1.5	1.1	1.4	1.4	0.4	0.6	1.9	1.3	1.4	1.5	1.3	2.0	1.6	0.8	1.0	1.2
Mid-Coast	2.3	1.2	1.1	1.5	1.1	0.7	0.5	0.9	1.5	2.3	1.1	1.1	0.7	1.9	0.6	0.7	1.2
Mid-Western Regional	.	1.5	1.3	1.5	0.7	0.6	.	.	0.8	0.7	1.1	0.6	0.7	1.2	0.2	0.6	1.6
Moree Plains	.	3.6	2.6	2.0	1.0	2.3	.	.	4.8	6.9	3.3	3.2	3.8	2.8	1.8	1.5	5.3
Mosman	.	0.3	0.3	0.4	0.4	1.7	.	0.3	0.7	0.5	0.3	0.5	0.3	0.6	0.3	0.6	0.6
Murray River	.	0.6	0.5	1.1	0.9	.	3.8	0.8	1.1	2.6	1.3	0.5	0.4	1.0	0.2	0.4	0.8
Murrumbidgee	.	1.5	0.7	1.3	2.5	.	.	.	0.8	1.6	1.0	0.5	0.2	0.7	.	0.7	0.9
Muswellbrook	.	1.7	1.1	2.1	1.4	0.6	.	.	2.1	3.4	1.4	0.7	1.1	2.1	1.2	0.9	1.8
Nambucca	5.4	1.6	2.0	3.2	2.0	0.5	.	1.4	2.1	4.3	1.5	1.5	1.5	1.8	0.8	1.3	1.6
Narrabri	.	1.5	1.3	2.1	1.0	.	.	.	2.6	1.7	1.4	1.3	0.5	1.6	.	0.5	1.2
Narrandera	.	1.4	1.5	1.8	2.4	0.9	.	.	1.3	1.7	1.1	0.8	0.8	1.0	.	0.4	1.9
Narromine	.	3.1	1.7	2.6	1.9	0.8	14.0	2.8	4.6	5.6	2.8	2.5	0.5	3.9	1.7	1.1	2.0
Newcastle	2.6	1.0	1.6	1.4	1.3	1.0	2.5	2.5	1.8	1.7	2.1	2.5	1.6	2.1	1.6	1.5	1.7
North Sydney	.	0.4	0.5	0.8	0.6	0.5	1.3	0.4	0.7	0.5	0.4	0.4	0.8	0.8	1.0	1.1	0.7
Northern Beaches	0.4	0.4	0.6	0.6	0.6	0.5	0.5	0.5	0.4	0.4	0.5	0.6	0.7	0.6	0.4	0.7	0.7
Oberon	.	1.5	0.8	0.7	0.5	.	.	.	1.4	2.5	0.8	0.4	0.3	1.0	.	0.7	1.4
Orange	2.6	1.7	1.5	2.3	1.9	1.9	1.1	2.6	2.8	2.1	2.2	2.5	1.7	2.0	1.1	1.1	1.8
Parkes	7.1	1.5	1.6	2.6	2.2	0.7	.	0.6	1.1	1.5	0.8	0.7	1.1	1.1	.	0.8	1.6
Parramatta	1.7	0.8	0.9	0.7	0.8	1.1	1.5	1.3	1.1	0.8	0.8	1.1	1.2	0.9	1.8	1.2	0.7
Penrith	0.5	1.6	1.2	1.3	1.2	1.4	1.6	1.4	1.2	1.1	1.3	1.3	1.2	1.2	1.4	1.4	1.2
Port Macquarie-Hastings	1.3	0.9	0.8	1.1	1.3	0.8	1.1	0.7	0.8	1.5	1.0	0.7	0.6	1.0	0.3	0.9	0.9
Port Stephens	1.5	1.3	1.0	1.3	1.5	0.9	0.6	0.3	0.9	1.1	1.1	0.6	0.8	1.2	0.5	0.8	1.2
Queanbeyan-Palerang Regional	.	0.6	0.8	0.7	0.8	0.4	1.6	1.2	1.2	1.0	1.1	1.4	0.7	1.1	0.3	0.5	1.0
Randwick	.	0.6	0.9	0.6	0.7	0.6	0.6	0.7	0.7	0.3	0.7	0.7	0.5	0.9	1.1	1.0	0.7
Richmond Valley	.	1.6	1.3	2.3	1.6	.	.	0.8	1.7	2.2	1.2	0.9	0.8	1.2	0.6	0.6	1.4
Ryde	0.9	0.6	0.5	0.3	0.6	0.5	0.7	0.5	0.6	0.6	0.4	0.6	0.9	0.5	0.7	1.0	0.5
Shellharbour	.	0.7	0.6	1.0	0.9	0.5	0.6	0.8	0.9	0.6	1.1	0.9	1.4	0.9	0.3	0.7	0.9
Shoalhaven	.	1.1	1.0	0.9	1.4	0.5	0.9	0.6	1.1	1.2	0.9	1.1	1.1	1.0	0.5	0.7	1.1
Singleton	.	1.0	1.0	1.3	1.1	0.4	.	.	1.4	2.7	1.2	0.8	0.8	2.1	0.5	0.7	1.4
Snowy Monaro Regional	.	0.7	0.8	0.9	1.1	.	.	.	0.5	1.1	0.5	0.6	0.4	0.7	0.1	0.3	0.9
Snowy Valleys	.	1.2	0.9	1.6	1.7	.	.	.	1.6	2.5	1.4	1.6	0.9	1.3	.	0.5	1.7
Strathfield	.	0.9	0.8	0.5	0.8	1.2	.	0.4	0.8	0.5	0.9	0.9	0.7	0.8	1.6	1.5	0.6
Sutherland Shire	.	0.6	0.6	0.4	0.6	0.4	0.2	0.2	0.4	0.3	0.5	0.5	0.7	0.5	0.4	0.6	0.7
Sydney	1.4	1.2	3.4	1.5	1.9	5.2	1.8	3.0	1.0	1.6	1.0	1.1	3.7	1.9	9.1	2.8	1.6
Tamworth Regional	.	1.6	1.4	2.1	1.7	1.0	.	1.8	2.7	1.6	1.1	1.8	1.2	1.6	0.3	0.8	1.7
Temora	.	0.5	1.5	1.1	0.2	0.8	.	.	0.5	1.4	0.5	0.7	0.4	0.9	.	0.5	1.1
Tenterfield	.	2.1	0.9	0.6	1.3	.	.	.	1.9	1.1	0.9	0.6	1.2	2.3	0.3	0.4	1.1
The Hills Shire	0.6	0.4	0.3	0.4	0.5	0.4	.	0.2	0.6	0.5	0.5	0.5	0.6	0.6	0.3	0.7	0.4
Tweed	2.2	0.9	0.8	0.8	0.7	0.6	1.0	0.8	0.8	1.0	1.1	1.1	0.5	0.9	0.7	0.7	0.9
Unincorporated Far West
Upper Hunter Shire	7.4	1.1	0.7	1.2	1.0	.	.	0.6	0.7	2.0	0.8	0.4	0.5	1.6	0.3	0.4	1.0
Upper Lachlan Shire	.	0.3	0.3	1.0	1.1	.	.	.	0.7	0.4	0.7	0.3	.	0.7	0.2	0.2	0.5
Uralla	.	0.6	0.5	0.4	2.4	.	.	1.5	0.7	1.0	0.5	0.2	.	1.4	.	0.2	0.6
Wagga Wagga	3.3	1.7	1.5	1.5	1.7	0.2	2.1	1.1	3.2	2.1	2.3	1.8	1.5	2.0	1.1	0.9	2.0
Walcha	.	1.2	1.2	5.5	4.6	.	.	.	0.2	1.2	0.2	0.5	0.1	0.7	1.2	0.6	0.5
Walgett	.	6.3	2.7	1.9	3.8	.	.	.	4.0	4.9	1.8	1.3	1.5	1.9	.	0.9	3.3
Warren
Warrumbungle Shire	.	1.4	1.2	2.0	0.9	.	.	.	1.4	1.3	0.6	0.6	0.6	1.7	0.4	0.5	1.3
Waverley	2.9	0.6	1.0	0.6	0.9	0.6	.	0.2	0.5	0.4	0.7	0.6	2.5	0.9	1.3	1.2	0.8
Weddin	.	0.3	0.6	.	0.8	.	.	.	0.7	0.4	0.5	0.4	0.5	0.8	.	0.5	0.6
Wentworth	30.5	2.4	1.6	2.1	2.4	1.5	.	1.3	1.7	2.0	2.0	0.7	0.2	1.3	0.5	0.4	1.3
Willoughby	1.3	0.4	0.4	0.4	0.7	1.1	.	0.7	0.7	0.5	0.4	0.5	2.7	0.5	0.9	1.1	0.6
Wingecarribee	2.1	0.5	0.4	0.7	1.0	0.3	.	0.2	0.4	0.6	0.5	0.4	0.6	0.4	0.1	0.6	0.8
Wollondilly	.	0.9	0.3	0.8	0.9	.	2.7	0.7	0.4	0.7	0.6	0.4	0.2	0.4	0.1	0.4	0.5
Wollongong	2.0	0.8	0.9	0.9	0.9	1.0	1.3	1.4	0.9	0.9	1.2	1.2	1.2	0.9	0.5	0.8	1.1
Woollahra	.	0.4	0.5	0.8	0.3	0.3	0.8	0.3	0.5	0.2	0.6	0.6	0.4	0.8	0.9	0.8	0.5
Yass Valley	.	0.4	0.5	0.8	1.3	0.6	.	.	0.4	0.6	0.8	0.5	0.1	0.4	.	0.3	0.6
NSW	1.0	1.0	1.0	1.0	1.0	1.0	1.0	1.0	1.0	1.0	1.0	1.0	1.0	1.0	1.0	1.0	1.0

* For further explanation of rate calculation populations and the ratio to NSW rate, see page 44, Footnote 2 and Note [8]. A result of . indicates either that there were no relevant offences recorded in the LGA, or that the population is less than 3,000 people and no rate was calculated.

Sydney LGA can be considered a special case since the population used to calculate the rate is much lower than the population using the area for work and entertainment and this will be reflected in higher incident rates.

* The ratios given on the offence of murder are calculated for the number of victims, not incidents, and must be treated with caution since for LGAs with relatively small populations a single murder victim will result in relatively high ratio to state.

TABLE 3.3C: NUMBER OF RECORDED CRIMINAL INCIDENTS FOR MAJOR OFFENCES, OVER THE 12 MONTHS TO MARCH 2019, NSW LGAs

NSW LGA	Murder *	Domestic violence related assault	Non-domestic violence related assault	Sexual assault	Indecent assault, act of indecency and other sexual offences	Robbery without a weapon	Robbery with a firearm	Robbery with a weapon not a firearm	Break and enter dwelling	Break and enter non-dwelling	Motor vehicle theft	Steal from motor vehicle	Steal from retail store	Steal from dwelling	Steal from person	Fraud	Malicious damage to property
Albury	1	292	355	51	86	18	1	6	341	141	134	539	384	230	22	331	663
Armidale Regional	0	201	180	47	66	8	0	6	258	101	68	304	130	140	12	178	414
Ballina	1	124	125	36	37	3	0	1	152	71	67	224	92	146	7	172	289
Balranald	0	12	12	3	2	0	0	0	10	9	1	9	0	8	0	18	30
Bathurst Regional	0	213	270	46	59	9	0	2	238	38	60	265	131	113	23	268	466
Bayside	1	568	529	54	101	34	5	10	310	98	220	620	358	297	89	1,171	928
Bega Valley	2	95	81	32	39	1	0	2	61	55	38	95	45	69	2	101	178
Bellingen	0	40	30	18	9	0	0	2	28	34	23	42	16	36	0	58	70
Berrigan	0	19	18	8	14	0	0	0	16	39	12	36	14	28	0	20	48
Blacktown	2	2,224	1,687	298	411	157	12	74	1,470	425	789	2,695	1,444	921	254	3,589	3,482
Bland	0	16	18	6	4	0	0	0	14	8	5	1	2	10	0	27	39
Blayney	0	21	30	5	9	1	0	1	39	22	9	17	7	14	0	25	45
Blue Mountains	0	216	189	57	80	7	1	2	191	52	73	367	145	131	20	334	713
Bogan	0	20	12	5	1	0	0	0	11	14	9	8	2	14	0	16	36
Bourke	0	112	52	16	11	0	0	1	57	17	18	58	41	35	7	24	145
Brewarrina	0	48	34	8	12	1	0	1	27	19	10	22	5	13	0	11	53
Broken Hill	0	203	144	20	36	1	0	5	216	82	42	174	65	119	5	123	368
Burwood	1	52	93	15	21	19	1	6	94	44	35	105	301	85	34	411	165
Byron	0	115	210	33	54	1	0	0	67	68	53	200	88	103	36	192	307
Cabonne	0	40	31	15	19	0	0	0	42	33	30	35	7	27	1	33	73
Camden	0	378	179	43	58	2	0	4	129	48	102	241	189	114	5	389	434
Campbelltown	2	942	615	187	233	40	9	23	503	128	297	968	857	396	75	1,075	1,398
Canada Bay	0	104	153	34	45	5	1	5	187	70	91	295	113	119	31	621	273
Canterbury-Bankstown	4	1,177	964	196	225	76	14	45	793	246	572	1,389	498	463	83	2,254	1,815
Carrathool	0	14	15	1	9	0	0	1	18	5	1	10	1	14	0	10	20
Central Coast	1	1,680	1,437	275	408	44	6	30	1,056	397	702	1,631	950	724	139	2,211	2,907
Central Darling	0	88	41	5	6	0	0	0	27	19	3	18	1	10	1	7	65
Cessnock	0	299	216	75	83	7	3	7	347	145	309	465	174	282	15	373	509
Clarence Valley	2	202	238	50	46	2	0	5	188	94	82	221	159	208	16	327	540
Cobar	0	40	37	7	14	0	0	0	19	18	17	18	3	5	1	29	91
Coffs Harbour	0	434	403	100	146	30	3	18	411	183	202	577	344	237	34	534	718
Coolamon	0	10	9	2	5	0	0	0	8	8	6	6	1	6	0	10	21
Coonamble	0	80	46	7	13	0	0	2	126	48	16	56	25	45	7	34	139
Cootamundra-Gundagai	0	66	56	11	19	0	0	0	40	26	10	30	26	36	1	91	98
Cowra	0	55	77	8	23	1	0	1	80	36	32	51	33	41	4	58	162
Cumberland	1	864	841	97	138	64	10	32	682	168	416	1,164	399	389	116	1,949	1,174
Dubbo Regional	0	634	403	78	111	12	2	17	600	257	236	740	339	273	44	392	1,154
Dungog	0	28	24	10	8	0	0	0	13	5	10	14	3	15	1	23	34
Edward River	0	53	27	10	11	1	1	1	41	28	12	47	17	44	0	35	92
Eurobodalla	0	164	181	33	36	2	2	3	195	61	55	175	174	98	1	134	354
Fairfield	4	780	582	125	160	70	10	29	305	120	336	937	366	269	87	1,420	1,021
Federation	0	29	51	8	12	0	0	1	32	41	20	36	11	54	3	30	75
Forbes	0	82	73	13	18	1	0	0	82	64	17	51	26	38	2	52	118
Georges River	1	457	362	62	87	34	3	13	295	75	173	419	298	184	61	928	735
Gilgandra	0	43	27	5	8	0	0	0	24	15	9	21	7	18	2	21	52
Glen Innes Severn	0	48	72	14	15	1	0	0	37	18	12	23	40	39	3	26	101
Goulburn Mulwaree	0	97	119	25	61	2	0	1	92	32	42	100	131	74	2	157	247
Greater Hume Shire	0	21	15	13	10	0	0	0	28	14	15	18	0	18	3	25	41
Griffith	0	216	120	24	30	5	1	3	131	99	71	153	120	80	4	146	274
Gunnedah	0	55	68	12	11	1	0	0	101	27	45	98	42	65	2	62	158
Gwydir	0	28	12	6	6	0	0	0	18	8	12	31	2	16	1	4	24
Hawkesbury	1	226	212	73	75	6	1	2	157	119	98	213	174	115	13	354	454
Hay	0	13	30	3	5	0	0	0	17	14	5	16	2	11	0	24	63
Hilltops	0	99	100	22	30	1	0	1	49	25	24	55	42	70	2	64	210
Hornsby	2	198	231	73	110	13	0	5	206	93	87	344	369	125	38	736	496
Hunters Hill	1	18	45	5	10	0	0	0	43	19	18	52	19	19	4	89	78
Inner West	1	391	613	118	154	42	4	22	495	174	244	833	413	519	107	1,524	1,258
Inverell	0	136	92	26	39	4	0	1	128	28	20	131	65	82	4	72	244
Junee	1	23	27	4	5	0	0	1	20	11	6	8	5	12	0	9	57
Kempsey	0	219	181	43	33	9	1	9	407	144	123	181	161	221	23	190	423
Kiama	0	37	25	4	3	1	0	2	39	28	20	46	14	24	2	77	92
Ku-ring-gai	0	84	109	41	45	13	0	10	311	66	28	166	64	143	17	476	321
Kyogle	0	55	52	12	22	1	0	1	26	12	19	35	5	19	0	25	82
Lachlan	0	48	33	10	10	3	1	0	30	36	14	33	8	32	1	14	105
Lake Macquarie	5	738	666	187	252	17	3	19	697	304	524	1,136	773	467	56	1,431	1,651

TABLE 3.3C: NUMBER OF RECORDED CRIMINAL INCIDENTS FOR MAJOR OFFENCES, OVER THE 12 MONTHS TO MARCH 2019, NSW LGAs

NSW LGA	Murder *	Domestic violence related assault	Non-domestic violence related assault	Sexual assault	Indecent assault, act of indecency and other sexual offences	Robbery without a weapon	Robbery with a firearm	Robbery with a weapon not a firearm	Break and enter dwelling	Break and enter non-dwelling	Motor vehicle theft	Steal from motor vehicle	Steal from retail store	Steal from dwelling	Steal from person	Fraud	Malicious damage to property
Lane Cove	0	38	38	17	31	4	1	0	87	39	29	116	34	57	6	220	132
Leeton	0	76	57	6	22	0	0	0	83	27	24	62	19	49	2	45	96
Lismore	0	227	273	60	90	11	0	7	189	62	119	253	128	161	24	231	374
Lithgow	0	106	128	23	32	1	0	0	70	31	37	55	44	72	7	148	218
Liverpool	3	886	721	158	210	42	3	29	642	164	399	1,051	745	440	114	1,474	1,328
Liverpool Plains	0	37	39	7	4	0	0	1	23	5	15	26	17	23	1	24	83
Lockhart	0	6	8	4	4	0	0	0	10	10	6	20	2	3	0	9	21
Lord Howe Island	0	0	2	2	2	0	0	0	1	0	1	0	0	1	0	0	0
Maitland	0	475	363	88	120	6	1	17	350	145	201	496	510	318	35	531	716
Mid-Coast	2	416	393	105	106	12	1	9	459	278	165	503	215	416	28	398	845
Mid-Western Regional	0	139	126	29	17	3	0	0	67	21	44	70	53	74	3	101	294
Moree Plains	0	183	140	20	14	6	0	0	212	119	75	209	164	91	13	131	529
Mosman	0	37	32	10	13	10	0	1	68	18	15	79	26	44	5	130	131
Murray River	0	26	22	10	11	0	1	1	44	40	27	31	16	30	1	33	67
Murrumbidgee	0	23	11	4	10	0	0	0	11	8	7	10	2	7	0	17	25
Muswellbrook	0	108	75	26	24	2	0	0	116	71	40	57	60	83	10	102	221
Nambucca	1	123	157	48	40	2	0	3	134	109	49	139	97	85	8	174	226
Narrabri	0	77	69	21	14	0	0	0	114	29	31	85	23	52	0	45	119
Narrandera	0	32	35	8	15	1	0	0	26	13	11	22	16	14	0	16	81
Narromine	0	79	45	13	13	1	2	2	101	47	31	80	11	62	6	48	97
Newcastle	4	649	1,043	168	211	31	9	44	954	357	576	1,971	849	807	136	1,634	2,011
North Sydney	0	110	136	42	45	7	2	3	164	50	48	149	187	149	38	513	352
Northern Beaches	1	455	632	123	166	24	3	15	378	151	212	758	618	379	61	1,227	1,298
Oberon	0	31	17	3	3	0	0	0	25	17	7	11	5	13	0	25	54
Orange	1	266	241	71	83	15	1	12	388	112	155	491	221	201	25	306	565
Parokes	1	84	93	29	34	2	0	1	52	28	20	48	51	41	0	75	180
Parramatta	4	767	866	136	192	52	8	34	904	265	338	1,274	921	534	229	1,981	1,308
Penrith	1	1,219	973	198	254	55	7	31	797	296	452	1,254	804	595	156	1,901	1,840
Port Macquarie-Hastings	1	281	250	68	109	12	2	6	216	152	133	290	145	191	15	479	550
Port Stephens	1	343	282	71	111	12	1	2	217	97	138	214	190	210	19	380	639
Queanbeyan-Palerang Regional	0	130	185	30	47	4	2	8	235	72	114	392	128	159	9	198	421
Randwick	0	375	524	72	115	19	2	12	353	58	180	542	240	318	87	997	783
Richmond Valley	0	141	125	41	39	0	0	2	128	65	49	106	57	66	7	89	248
Ryde	1	277	236	32	75	13	2	7	243	93	88	334	360	161	46	817	485
Shellharbour	0	201	181	52	65	7	1	6	214	57	127	299	315	147	11	312	496
Shoalhaven	0	445	410	68	145	9	2	7	359	160	153	528	358	250	25	480	807
Singleton	0	87	90	23	27	2	0	0	106	81	48	87	64	121	6	101	241
Snowy Monaro Regional	0	55	70	14	24	0	0	0	35	29	19	58	27	34	1	42	142
Snowy Valleys	0	64	53	18	25	0	0	0	75	46	34	109	40	47	0	46	180
Strathfield	0	147	148	17	36	10	0	2	117	30	64	192	101	80	37	447	183
Sutherland Shire	0	518	543	73	146	18	1	6	291	78	193	551	498	294	49	851	1,162
Sydney	3	1,050	3,194	258	457	233	9	76	742	483	392	1,279	2,757	1,049	1,118	4,314	2,768
Tamworth Regional	0	385	347	98	105	12	0	12	550	130	115	529	238	239	10	336	776
Temora	0	13	37	5	1	1	0	0	11	11	5	20	8	14	0	22	50
Tenterfield	0	54	24	3	9	0	0	0	41	9	10	20	25	37	1	18	56
The Hills Shire	1	225	218	49	86	13	0	3	349	106	139	434	301	223	29	825	504
Tweed	2	344	285	57	64	11	2	8	236	117	179	497	138	208	33	441	640
Unincorporated Far West	0	1	4	1	0	0	0	0	1	1	2	3	3	0	1	2	3
Upper Hunter Shire	1	58	39	13	15	0	0	1	33	37	20	29	21	54	2	40	100
Upper Lachlan Shire	0	10	8	6	9	0	0	0	18	4	9	12	0	13	1	13	28
Uralla	0	13	13	2	15	0	0	1	15	8	5	6	0	21	0	10	29
Wagga Wagga	2	413	384	74	110	3	3	8	685	174	247	552	311	305	36	396	960
Walcha	0	14	15	13	15	0	0	0	2	5	1	7	1	5	2	12	12
Walgett	0	148	67	9	24	0	0	0	83	39	19	38	30	29	0	35	151
Warren	0	42	23	2	4	1	0	0	19	16	11	17	8	19	4	9	62
Warrumbungle Shire	0	49	47	14	9	0	0	0	45	16	10	26	17	38	2	32	90
Waverley	2	157	298	34	67	8	0	2	111	37	91	212	587	161	51	563	424
Weddin	0	4	9	0	3	0	0	0	8	2	3	7	6	7	0	11	17
Wentworth	2	65	44	11	17	2	0	1	39	18	23	23	4	21	2	20	69
Willoughby	1	110	141	24	55	17	0	6	193	52	55	188	696	105	37	555	332
Wingecarribee	1	100	83	27	50	3	0	1	66	39	39	91	101	50	3	189	293
Wollondilly	0	179	61	31	47	0	3	4	75	47	53	107	26	51	2	118	195
Wollongong	4	688	741	151	194	42	6	33	664	234	429	1,255	836	476	55	1,109	1,659
Woollahra	0	90	117	36	21	3	1	2	102	16	61	155	82	116	27	319	209
Yass Valley	0	24	35	10	22	2	0	0	24	12	23	39	6	18	0	37	73
In Custody	0	4	1,368	67	54	0	0	1	0	2	1	1	0	0	1	20	69
NSW	74	30,063	31,413	5,933	8,116	1,514	171	860	26,045	10,091	13,265	37,637	25,303	18,910	4,160	51,838	58,007

* For murder the count given is for the number of victims, not incidents.

TABLE 3.3D: NUMBER OF RECORDED CRIMINAL INCIDENTS FOR MAJOR OFFENCES, OVER THE 12 MONTHS TO MARCH 2018, NSW LGAs

NSW LGA	Murder *	Domestic violence related assault	Non-domestic violence related assault	Sexual assault	Indecent assault, act of indecency and other sexual offences	Robbery without a weapon	Robbery with a firearm	Robbery with a weapon not a firearm	Break and enter dwelling	Break and enter non-dwelling	Motor vehicle theft	Steal from motor vehicle	Steal from retail store	Steal from dwelling	Steal from person	Fraud	Malicious damage to property
Albury	0	266	316	54	68	10	2	4	343	119	145	621	265	243	24	346	681
Armidale Regional	1	192	201	31	34	9	0	9	292	73	64	267	182	164	22	186	512
Ballina	0	95	196	26	33	5	0	4	98	85	65	249	96	117	14	204	318
Balranald	0	4	11	0	0	0	0	0	10	6	3	7	0	5	0	5	28
Bathurst Regional	0	229	230	57	62	6	2	6	216	68	66	229	126	128	25	253	538
Bayside	1	528	470	84	88	30	3	17	328	114	220	675	430	283	84	1,066	944
Bega Valley	0	104	109	30	45	1	0	0	61	51	27	115	51	64	6	107	267
Bellingen	0	37	41	9	9	0	0	0	28	27	26	37	4	29	5	31	83
Berrigan	0	16	15	6	5	0	0	0	17	15	3	23	5	18	0	15	42
Blacktown	5	2,011	1,697	283	365	135	9	83	1,519	337	802	2,902	1,257	916	286	3,445	3,266
Bland	0	24	15	10	10	0	0	0	12	9	15	23	6	6	0	24	34
Blayney	0	37	21	7	13	0	0	0	19	15	12	27	3	8	2	11	46
Blue Mountains	0	269	242	79	70	11	0	4	171	56	60	215	68	131	24	362	659
Bogan	0	24	24	2	7	0	0	0	6	7	9	26	9	12	1	13	32
Bourke	0	91	48	16	15	0	0	1	95	21	12	55	53	34	1	28	120
Brewarrina	0	43	32	8	6	0	0	0	44	28	3	27	7	13	2	11	43
Broken Hill	0	199	162	19	40	4	0	2	208	49	37	162	36	108	4	58	342
Burwood	1	76	137	13	28	22	0	7	100	36	41	137	298	68	41	414	145
Byron	1	97	278	34	56	6	0	2	120	63	63	199	98	108	50	175	342
Cabonne	0	32	18	12	11	0	0	0	32	23	14	26	3	24	0	44	34
Camden	0	339	162	41	78	3	1	5	158	56	94	254	130	109	5	346	428
Campbelltown	2	806	643	152	183	41	4	37	565	176	265	841	808	388	74	864	1,405
Canada Bay	0	109	118	25	46	10	1	8	262	70	120	323	96	153	27	570	368
Canterbury-Bankstown	4	1,145	1,067	173	198	85	9	45	827	231	677	1,564	598	505	97	2,286	1,879
Carrathool	0	10	14	2	6	0	0	0	5	5	5	12	1	6	0	6	26
Central Coast	4	1,622	1,471	285	412	58	5	37	1,051	385	678	1,614	830	765	163	2,239	3,048
Central Darling	0	89	26	6	6	0	0	0	29	17	6	20	1	7	1	2	49
Cessnock	0	347	251	88	61	6	1	8	380	172	309	450	152	245	24	310	686
Clarence Valley	0	227	264	38	61	1	1	1	191	134	99	225	116	229	22	306	462
Cobar	0	32	42	4	16	0	0	1	25	14	17	46	1	8	0	17	87
Coffs Harbour	0	482	530	113	149	15	1	20	460	218	182	400	199	276	47	494	767
Coolamon	1	13	12	4	3	0	0	0	9	17	9	5	4	5	0	8	16
Coonamble	0	55	50	9	8	3	0	0	76	45	15	50	19	23	1	30	105
Cootamundra-Gundagai	0	53	46	10	12	0	0	1	43	11	19	25	21	32	1	100	118
Cowra	0	64	77	15	17	3	0	0	125	39	13	54	34	53	3	72	149
Cumberland	2	846	775	139	159	88	6	34	821	226	412	1,270	426	430	108	1,822	1,158
Dubbo Regional	0	388	401	78	118	5	0	9	581	145	200	615	304	249	41	386	1,022
Dungog	0	30	21	7	11	0	0	0	19	11	7	6	2	22	0	25	50
Edward River	0	38	37	11	13	0	0	0	34	20	2	41	25	28	2	27	106
Eurobodalla	0	162	211	37	39	3	0	3	178	69	66	183	74	113	6	149	376
Fairfield	0	720	651	107	153	64	8	47	541	157	335	835	375	244	87	1,325	1,112
Federation	1	25	31	6	14	0	0	0	38	34	14	46	12	47	2	46	103
Forbes	1	54	72	6	9	0	0	0	55	47	21	57	23	58	2	42	124
Georges River	1	390	366	50	77	29	0	10	229	87	144	422	308	167	63	935	728
Gilgandra	0	40	17	8	8	1	0	1	35	21	8	27	7	29	3	19	37
Glen Innes Severn	0	77	73	17	15	3	0	2	40	36	23	21	12	48	1	39	127
Goulburn Mulwaree	0	139	129	49	42	1	0	2	61	35	32	125	149	99	3	160	252
Greater Hume Shire	0	22	12	8	12	1	0	0	32	19	17	32	4	28	1	29	42
Griffith	0	197	147	22	15	6	0	9	148	86	69	322	121	94	8	97	391
Gunnedah	0	67	87	16	19	1	0	1	68	13	41	52	40	73	1	64	172
Gwydir	0	21	14	5	6	0	0	0	6	6	9	10	1	21	0	11	35
Hawkesbury	0	277	192	56	71	6	0	4	161	68	113	236	150	101	20	273	382
Hay	0	19	19	3	5	0	0	0	18	6	6	13	3	9	0	6	84
Hilltops	0	99	98	38	40	2	0	1	50	38	38	66	33	68	0	72	223
Hornsby	0	133	206	66	73	14	1	1	272	81	88	401	310	168	45	610	614
Hunters Hill	0	25	29	5	10	0	1	0	42	11	21	47	5	31	2	54	79
Inner West	1	403	653	96	156	41	5	25	470	167	265	802	365	441	112	1,434	1,306
Inverell	0	102	115	24	28	0	0	1	144	80	42	104	71	109	3	50	285
Junee	0	13	17	5	5	0	0	0	21	15	8	31	2	20	0	11	45
Kempsey	0	238	195	43	46	11	1	6	278	90	97	155	154	181	28	107	340
Kiama	0	35	29	9	13	1	0	2	44	31	33	104	8	35	5	60	91
Ku-ring-gai	0	64	91	35	49	3	0	1	330	64	38	235	45	154	18	463	330
Kyogle	0	49	34	9	9	1	0	0	36	19	11	12	5	22	1	12	77
Lachlan	0	66	44	8	18	0	0	0	25	41	18	26	5	31	1	13	102
Lake Macquarie	0	792	695	198	229	19	3	20	638	314	556	1,216	714	498	69	1,336	1,942

TABLE 3.3D: NUMBER OF RECORDED CRIMINAL INCIDENTS FOR MAJOR OFFENCES, OVER THE 12 MONTHS TO MARCH 2018, NSW LGAs

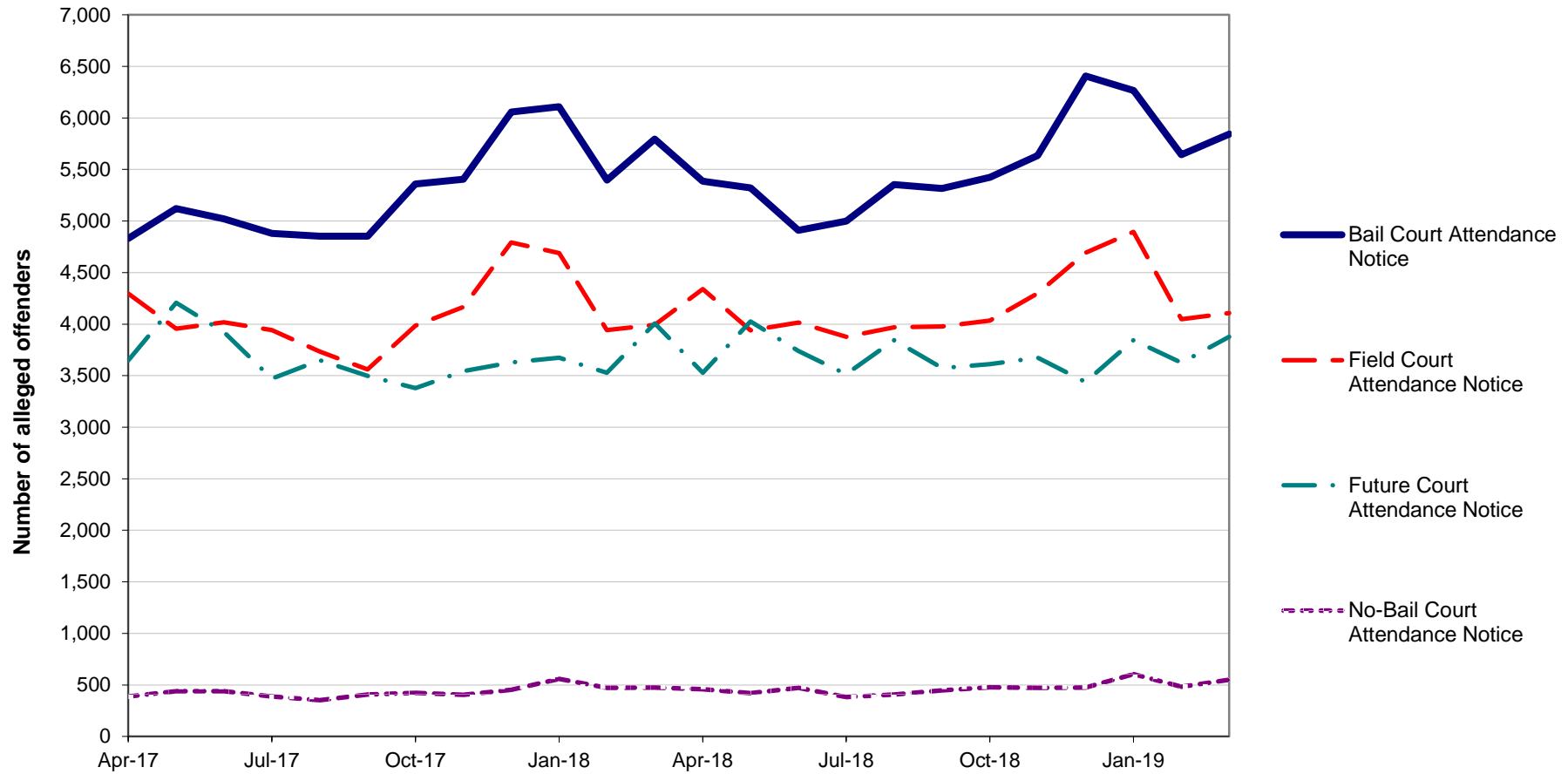
NSW LGA	Murder *	Domestic violence related assault	Non-domestic violence related assault	Sexual assault	Indecent assault, act of indecency and other sexual offences	Robbery without a weapon	Robbery with a firearm	Robbery with a weapon not a firearm	Break and enter dwelling	Break and enter non-dwelling	Motor vehicle theft	Steal from motor vehicle	Steal from retail store	Steal from dwelling	Steal from person	Fraud	Malicious damage to property
Lane Cove	0	41	50	16	15	1	0	1	135	51	29	124	27	63	6	152	112
Leeton	1	68	64	20	23	0	0	3	82	36	31	59	29	36	2	47	104
Lismore	0	166	283	56	67	7	1	4	210	82	111	234	113	171	15	152	473
Lithgow	0	98	127	17	23	2	0	1	101	44	38	69	43	80	9	140	245
Liverpool	1	845	713	130	213	61	7	30	757	226	406	1,164	733	409	111	1,643	1,364
Liverpool Plains	0	36	43	3	16	0	0	0	24	26	14	13	5	35	0	22	119
Lockhart	0	15	10	3	2	0	0	0	8	4	3	3	0	5	0	4	17
Lord Howe Island	0	0	1	0	0	0	0	0	0	2	0	0	0	1	0	2	3
Maitland	0	454	369	73	101	9	2	9	396	166	212	659	368	335	35	548	889
Mid-Coast	0	410	419	99	147	19	0	9	441	249	168	391	249	434	31	441	998
Mid-Western Regional	1	124	110	37	30	1	0	0	82	23	28	100	34	85	5	91	289
Moree Plains	0	202	195	35	33	16	2	12	340	200	124	294	177	143	20	90	614
Mosman	0	54	38	13	18	2	0	1	63	22	23	69	29	61	5	116	116
Murray River	0	14	26	3	2	0	0	0	25	30	11	56	14	21	1	31	65
Murrumbidgee	0	26	17	3	7	0	0	0	13	8	6	8	2	9	0	8	35
Muswellbrook	0	94	104	24	24	4	1	4	159	64	30	102	47	62	7	60	216
Nambucca	0	100	95	28	43	1	0	2	132	115	43	145	68	75	6	88	257
Narrabri	1	84	85	13	10	1	0	0	56	26	25	79	21	59	2	76	170
Narrandera	0	31	30	7	9	0	0	2	83	65	23	55	22	21	0	19	78
Narromine	0	63	38	6	18	2	0	0	57	57	17	60	8	42	4	23	99
Newcastle	1	635	1,061	191	252	30	4	35	993	404	503	2,116	914	766	164	1,663	2,217
North Sydney	0	125	192	28	58	12	1	8	147	77	41	222	171	209	44	531	354
Northern Beaches	1	381	576	104	122	24	1	8	450	188	219	917	494	437	91	1,208	1,108
Oberon	0	22	19	6	3	0	0	0	21	19	2	7	3	13	0	18	47
Orange	0	265	233	72	93	6	0	8	304	76	119	302	223	139	15	237	559
Parkes	1	88	103	20	29	0	0	1	49	47	23	68	24	73	1	80	232
Parramatta	0	732	797	129	195	72	10	24	908	221	323	1,437	842	580	236	1,951	1,402
Penrith	1	1,158	965	202	252	56	4	37	832	235	516	1,423	877	597	126	1,811	1,934
Port Macquarie-Hastings	0	235	286	61	68	10	0	10	186	174	102	264	223	253	26	320	679
Port Stephens	0	338	256	63	90	0	1	3	226	110	127	296	181	194	14	396	699
Queanbeyan-Palerang Regional	1	134	165	34	27	3	0	5	193	41	127	371	204	130	8	197	467
Randwick	2	347	550	68	99	32	3	14	337	96	165	474	285	305	95	976	676
Richmond Valley	0	118	140	28	42	0	1	3	102	54	42	74	53	68	6	123	211
Ryde	0	199	238	53	85	8	3	7	376	94	75	328	515	187	53	857	534
Shellharbour	0	230	172	62	58	8	3	11	181	66	129	328	269	126	15	260	532
Shoalhaven	1	347	421	114	140	10	2	6	396	141	141	391	368	209	19	394	843
Singleton	0	109	102	24	31	4	0	0	97	55	57	95	68	75	2	135	181
Snowy Monaro Regional	0	53	81	21	19	0	0	0	40	13	4	50	16	24	1	58	167
Snowy Valleys	0	75	69	20	25	1	0	0	129	53	37	152	21	63	8	46	189
Strathfield	0	137	154	19	26	7	2	8	166	29	52	235	80	65	54	467	232
Sutherland Shire	2	474	598	91	109	13	0	5	374	116	209	769	593	316	63	896	1,244
Sydney	2	1,005	3,285	257	550	174	6	73	724	548	350	1,195	3,063	1,037	1,211	4,651	2,492
Tamworth Regional	1	318	417	68	89	12	1	7	603	145	111	597	277	266	30	412	922
Temora	0	24	29	1	3	0	0	0	22	3	9	19	9	20	0	20	49
Tenterfield	0	37	38	2	10	0	0	1	25	9	9	19	9	36	0	23	71
The Hills Shire	0	206	262	58	57	8	0	3	347	64	113	534	300	219	34	840	457
Tweed	2	295	271	55	79	6	2	5	241	100	150	420	167	209	35	432	625
Unincorporated Far West	0	1	3	1	1	0	0	2	1	0	1	2	6	0	0	0	3
Upper Hunter Shire	0	31	34	12	19	0	0	0	46	54	24	39	8	44	1	42	96
Upper Lachlan Shire	0	8	15	6	5	0	0	0	12	5	1	12	1	20	0	15	32
Uralla	0	28	8	8	4	0	0	0	13	6	4	7	0	13	0	17	26
Wagga Wagga	1	385	404	72	79	12	0	14	751	153	175	534	370	309	29	309	975
Walcha	1	6	11	6	8	0	0	0	4	1	2	7	2	6	2	3	14
Walgett	1	142	97	8	11	0	0	0	103	30	22	59	19	48	1	30	223
Warren	0	31	24	6	4	0	0	0	19	10	5	20	5	12	3	8	71
Warrumbungle Shire	0	56	38	15	22	0	0	0	35	18	12	23	15	33	2	35	93
Waverley	0	146	324	52	53	12	2	2	117	18	101	202	583	178	51	569	467
Weddin	0	9	10	2	2	0	0	0	5	3	4	5	3	12	1	12	39
Wentworth	1	74	67	9	7	3	0	0	49	29	24	51	9	27	2	13	123
Willoughby	1	97	166	27	54	7	1	5	192	78	54	208	575	123	50	505	311
Wingecarribee	0	94	111	34	43	1	0	0	68	49	36	91	66	66	3	174	353
Wollondilly	0	189	86	26	22	1	0	3	86	37	54	81	21	51	1	148	273
Wollongong	1	619	862	160	163	42	6	33	734	303	390	1,373	847	589	79	867	1,763
Woollahra	0	97	128	25	33	1	0	0	120	24	54	150	82	145	34	333	274
Yass Valley	0	29	30	7	12	0	0	0	38	33	11	21	17	19	0	37	57
In Custody	2	7	1,148	59	31	3	0	0	0	2	1	1	0	0	0	10	86
NSW	53	28,359	32,360	5,878	7,668	1,468	130	900	27,366	10,356	13,001	39,090	24,627	19,359	4,557	50,007	60,469

* For murder the count given is for the number of victims, not incidents.

SECTION 4:

**METHODS OF PROCEEDINGS
AGAINST ALLEGED OFFENDERS**

Figure 4.1: TRENDS IN REFERRAL METHODS FOR ALLEGED OFFENDERS PROCEEDED AGAINST TO COURT, OVER THE 24 MONTHS TO MARCH 2019*, NSW



Trends:

Bail Court Attendance Notice shows a statistically significant upward trend for the 24 month period (up by 4.4%).

Field Court Attendance Notice shows no statistically significant trend for the 24 month period.

Future Court Attendance Notice shows no statistically significant trend for the 24 month period.

No-Bail Court Attendance Notice shows a statistically significant upward trend for the 24 month period (up by 8.7%).

* The date alleged offenders were proceeded against, rather than the date the incident was recorded.

TABLE 4.1: NUMBER, PERCENTAGE AND TREND[^] IN ALLEGED OFFENDERS PROCEEDED AGAINST BY NSW POLICE BY METHOD OF LEGAL PROCEEDINGS OVER THE 24 MONTHS TO MARCH 2019*, NSW

Type of process	Number of alleged offenders with proceedings commenced		Trend [^] over the 24 months to March 2019	
	over the 12 months to March 2018	over the 12 months to March 2019	Change	Annual percentage change
Proceeded against to court:				
Bail Court Attendance Notice	63,685	66,503	2,818	4.4%
No-Bail Court Attendance Notice	5,195	5,649	454	8.7%
Future Court Attendance Notice	44,161	44,295	134	Stable
Field Court Attendance Notice	49,073	50,195	1,122	Stable
All proceedings to court	162,114	166,642	4,528	2.8%
Proceeded against other than to court:				
Youth Justice Conference	713	776	63	Stable
Caution Young Offenders Act	7,489	6,792	-697	-9.3%
Cannabis Caution	5,542	4,700	-842	-15.2%
Criminal Infringement Notice	9,489	8,769	-720	Stable
Infringement Notice	721,437	663,484	-57,953	-8.0%
Liquor Offence Compliance Notice	373	335	-38	Stable
Warning Young Offenders Act	10,373	9,429	-944	Stable
All proceedings other than to court	755,416	694,285	-61,131	-8.1%
All proceedings	917,530	860,927	-56,603	-6.2%

[^] For further explanation of **trend results**, see page 44, Notes [5] and [6].

* The date alleged offenders were proceeded against, rather than the date the incident was recorded.

TABLE 4.2: NUMBER, PERCENTAGE AND TREND[^] IN ALLEGED OFFENDERS PROCEEDED AGAINST TO COURT BY NSW POLICE FOR MAJOR OFFENCES OVER THE 24 MONTHS TO MARCH 2019, NSW**

Offence category	Over the 12 months to March 2018			Over the 12 months to March 2019			Trend [^] over the last 24 months	
	Number proceeded against to court	Total number proceeded against	% proceeded against to court	Number proceeded against to court	Total number proceeded against	% proceeded against to court	Change in number proceeded against to court	Annual percentage change
Murder	73	73	100.0%	108	108	100.0%	35	Stable
Domestic violence related assault	12,199	12,580	97.0%	12,873	13,285	96.9%	674	5.5%
Non-domestic violence related assault	7,606	8,824	86.2%	7,471	8,777	85.1%	-135	Stable
Sexual assault	849	849	100.0%	796	797	99.9%	-53	Stable
Indecent assault, act of indecency and other sexual offences	1,450	1,512	95.9%	1,462	1,516	96.4%	12	Stable
Robbery without a weapon	743	754	98.5%	889	894	99.4%	146	19.7%
Robbery with a firearm	116	116	100.0%	141	141	100.0%	25	Stable
Robbery with a weapon not a firearm	563	563	100.0%	542	545	99.4%	-21	Stable
Break and enter dwelling	3,070	3,264	94.1%	2,980	3,162	94.2%	-90	Stable
Break and enter non-dwelling	1,868	2,274	82.2%	1,711	2,005	85.3%	-157	Stable
Motor vehicle theft	1,568	1,750	89.6%	1,585	1,713	92.5%	17	Stable
Steal from motor vehicle	1,349	1,574	85.7%	1,117	1,299	86.0%	-232	-17.2%
Steal from retail store	5,464	11,192	48.8%	5,932	11,380	52.1%	468	8.6%
Steal from dwelling	589	801	73.5%	605	743	81.4%	16	Stable
Steal from person	450	505	89.1%	372	424	87.7%	-78	Stable
Fraud	4,673	4,945	94.5%	4,947	5,179	95.5%	274	Stable
Malicious damage to property	5,502	6,530	84.3%	5,245	6,204	84.5%	-257	Stable

[^] For further explanation of **trend results**, see page 44, Notes [5] and [6].

** The date alleged offenders were proceeded against, rather than the date the incident was recorded.

SECTION 5:

**CLEARED CRIMINAL INCIDENTS
AND WHETHER LEGAL PROCEEDINGS
COMMENCED FOR SELECTED OFFENCES**

TABLE 5.1: NUMBER OF RECORDED CRIMINAL INCIDENTS FOR SELECTED OFFENCES BY WHETHER LEGAL PROCEEDINGS COMMENCED IN 30 DAYS OF REPORTING, OVER THE 24 MONTHS TO FEBRUARY 2019, NSW

Type of offence	Recorded criminal incidents over the 12 months to February 2018				Recorded criminal incidents over the 12 months to February 2019			
	Total number recorded	Cleared within 30 days of reporting			Total number recorded	Cleared within 30 days of reporting		
		Total number cleared [#]	Proceedings commenced within 30 days ^{###}	% proceedings commenced within 30 days		Total number cleared [#]	Proceedings commenced within 30 days ^{###}	% proceedings commenced within 30 days
Murder*	53	34	33	62.3	73	47	47	64.4
Domestic violence related assault	28,310	22,410	17,690	62.5	30,043	24,129	19,211	63.9
Non-domestic violence related assault	32,250	13,629	7,863	24.4	31,546	13,141	7,683	24.4
Sexual assault	5,891	1,267	474	8.0	5,876	1,064	420	7.1
Indecent assault, act of indecency and other sexual offences	7,587	2,208	1,242	16.4	8,013	2,184	1,242	15.5
Abduction and kidnapping	213	111	103	48.4	196	89	80	40.8
Robbery without a weapon	1,462	437	381	26.1	1,509	505	450	29.8
Robbery with a firearm	132	50	47	35.6	163	60	58	35.6
Robbery with a weapon not a firearm	884	313	298	33.7	848	304	290	34.2
Intimidation, stalking and harassment	31,154	18,476	11,648	37.4	32,270	19,235	12,488	38.7
Break and enter dwelling	27,572	2,121	1,764	6.4	26,200	2,115	1,811	6.9
Break and enter non-dwelling	10,431	1,044	940	9.0	10,144	962	862	8.5
Motor vehicle theft	13,057	1,050	870	6.7	13,239	1,071	915	6.9
Steal from motor vehicle	39,414	1,381	1,121	2.8	37,689	1,187	970	2.6
Steal from retail store	24,811	11,471	9,778	39.4	24,980	11,444	9,875	39.5
Steal from dwelling	19,399	1,493	689	3.6	19,094	1,429	664	3.5
Steal from person	4,554	511	356	7.8	4,192	495	345	8.2
Stock theft	467	17	5	1.1	439	23	12	2.7
Fraud	50,462	4,232	3,369	6.7	51,510	4,006	3,202	6.2
Arson	5,861	464	197	3.4	5,169	357	167	3.2
Malicious damage to property	60,820	14,851	11,386	18.7	58,073	15,131	11,738	20.2

[#] Total number cleared includes both incidents where proceedings were commenced and those where no proceedings were commenced.

^{###} This includes incidents where a person was either proceeded against to court or proceeded against other than to court.

* Victims for whom incident was cleared.

TABLE 5.2: NUMBER OF RECORDED CRIMINAL INCIDENTS FOR SELECTED OFFENCES BY WHETHER LEGAL PROCEEDINGS COMMENCED IN 90 DAYS OF REPORTING, OVER THE 24 MONTHS TO DECEMBER 2018, NSW

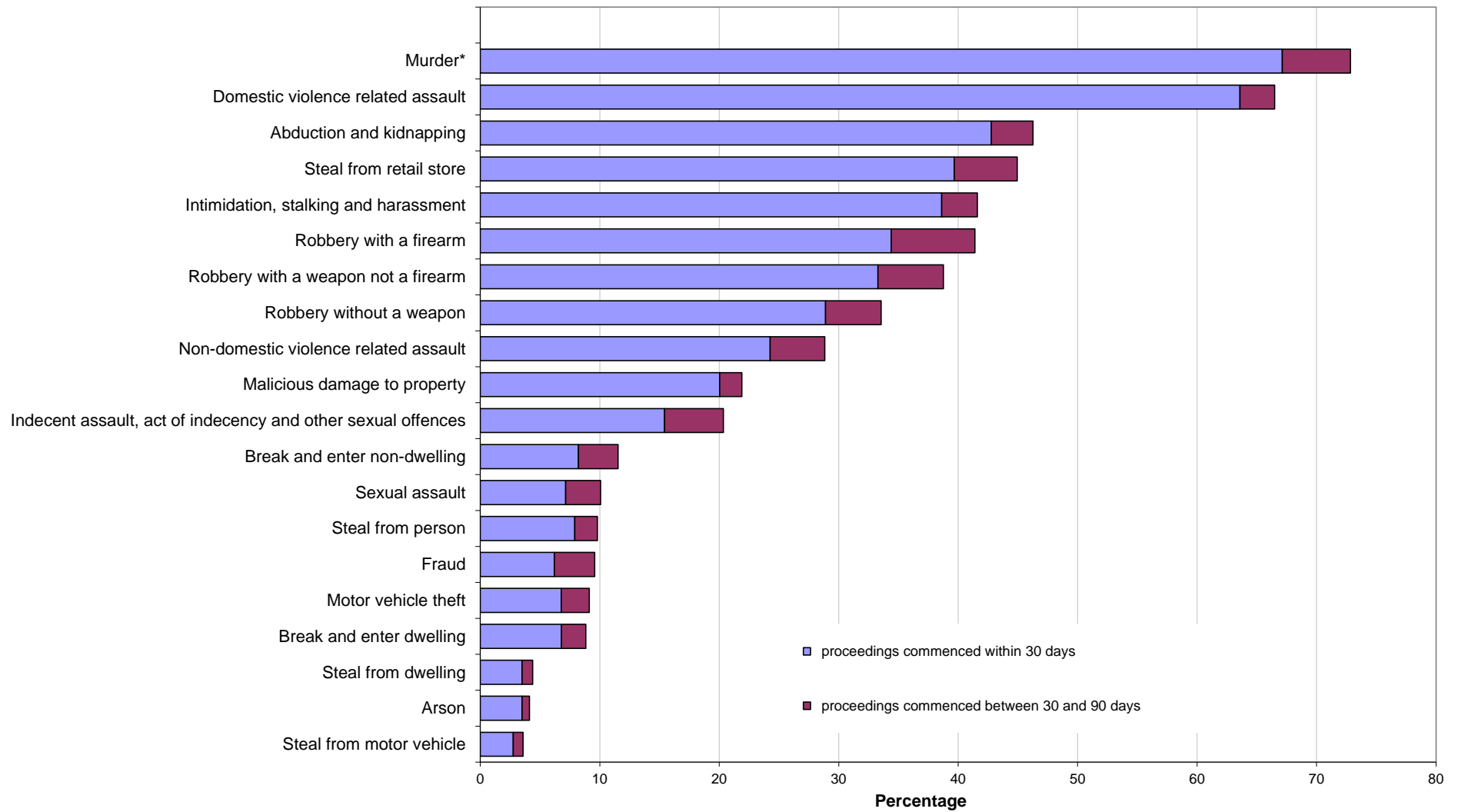
Type of offence	Recorded criminal incidents over the 12 months to December 2017				Recorded criminal incidents over the 12 months to December 2018			
	Total number recorded	Cleared within 90 days of reporting			Total number recorded	Cleared within 90 days of reporting		
		Total number cleared [#]	Proceedings commenced within 90 days ^{###}	% proceedings commenced within 90 days		Total number cleared [#]	Proceedings commenced within 90 days ^{###}	% proceedings commenced within 90 days
Murder*	53	39	38	71.7	70	53	51	72.9
Domestic violence related assault	28,464	23,876	18,706	65.7	29,666	25,124	19,725	66.5
Non-domestic violence related assault	32,215	15,628	9,180	28.5	31,875	15,343	9,192	28.8
Sexual assault	5,955	1,719	666	11.2	5,841	1,548	588	10.1
Indecent assault, act of indecency and other sexual offences	7,597	2,918	1,566	20.6	7,948	2,901	1,617	20.3
Abduction and kidnapping	220	120	104	47.3	201	101	93	46.3
Robbery without a weapon	1,449	508	450	31.1	1,499	579	503	33.6
Robbery with a firearm	131	53	49	37.4	157	68	65	41.4
Robbery with a weapon not a firearm	850	353	338	39.8	841	340	326	38.8
Intimidation, stalking and harassment	30,611	19,869	12,408	40.5	32,187	20,929	13,395	41.6
Break and enter dwelling	27,815	2,844	2,328	8.4	26,543	2,783	2,343	8.8
Break and enter non-dwelling	10,576	1,466	1,325	12.5	10,229	1,311	1,179	11.5
Motor vehicle theft	13,208	1,435	1,165	8.8	13,092	1,444	1,194	9.1
Steal from motor vehicle	39,072	1,771	1,443	3.7	38,107	1,672	1,364	3.6
Steal from retail store	24,556	12,813	10,981	44.7	24,844	12,931	11,167	44.9
Steal from dwelling	19,553	1,812	892	4.6	19,226	1,737	839	4.4
Steal from person	4,556	627	439	9.6	4,233	580	415	9.8
Stock theft	466	22	7	1.5	424	31	11	2.6
Fraud	49,773	6,462	5,161	10.4	51,855	6,216	4,969	9.6
Arson	5,897	518	216	3.7	5,348	459	220	4.1
Malicious damage to property	61,185	16,305	12,415	20.3	58,566	16,609	12,822	21.9

[#] Total number cleared includes both incidents where proceedings were commenced and those where no proceedings were commenced.

^{###} This includes incidents where a person was either proceeded against to court or proceeded against other than to court.

* Victims for whom incident was cleared.

Figure 5.1: PERCENTAGE OF RECORDED CRIMINAL INCIDENTS FOR SELECTED OFFENCES WHERE LEGAL PROCEEDINGS COMMENCED WITHIN 30 AND 90 DAYS, OVER THE 12 MONTHS TO DECEMBER 2018, NSW



* For murder the data are counts of recorded victims, not criminal incidents.

APPENDICES

APPENDIX 1: TRENDS IN RECORDED CRIMINAL INCIDENTS FOR NSW

[1] Irrespective of how trends in recorded crime are presented, their interpretation is a difficult task. The recorded criminal incident data presented in this report are based on information derived from the NSW Police Force Computerised Operational Policing System (COPS), so only those incidents which are reported to, or detected by, police are included. The trends in recorded crime shown in this report will, therefore, reflect movements in the underlying factors which influence the detection, reporting and recording of crime, as well as changes in the true level of crime in the community.

[2] An alternative measure of the level of crime in Australia is available from crime victim surveys, for example the national Crime Victimization Survey by the Australian Bureau of Statistics (ABS)¹. As well as providing an estimate of the victimisation rate at the State level for a selected set of offences, this survey estimates the proportion of crimes which are not reported to police, and are therefore not recorded in the official statistics. In particular, personal crimes, such as assault and robbery, are less likely to be reported than crimes which involve households. These surveys generally find that about half of physical assault victims aged 15 and over report the incident to police whereas break-ins are reported to police approximately three quarters of the time. Given that some offences have low reporting rates, it is possible that changes in recorded crime rates over time for these offences may be reflecting changes in reporting rates.

[3] Public willingness to report crime, however, is just one of the extraneous factors which can affect trends in recorded crime. Shifts in policing policy can also have a marked effect on the number of recorded drug offences, cases of offensive behaviour or of receiving stolen goods. For these offences, therefore, recorded rates probably do not accurately reflect actual rates. For this reason, the more detailed comparisons of crime rates and examination of trends in this document are restricted to offence categories which are more likely to be reported to, rather than detected by police.

[4] The interpretation of trends in official reports of crime can be considerably more difficult than the interpretation of trends in unemployment or inflation statistics. The ease with which recorded crime statistics can be misunderstood creates a temptation to offer an authoritative explanation for each major crime trend. Indeed, in many instances it is simply impossible to state with any assurance why a particular trend has appeared. This report, therefore, confines itself to identifying and describing trends in recorded crime, rather than explaining them.

[5] For each offence category or subcategory (except murder), a statistical test for trend was applied to the monthly numbers of recorded criminal incidents over the relevant period. In the case of murder, the statistical test for trend was applied to the monthly numbers of victims over the period. The trend test used was Kendall's rank-order correlation test (see, for example, Conover, W.J. 1980, *Practical Non-Parametric Statistics*, 2nd ed, John Wiley and Sons, pp 256-260). A two-tailed test was used to determine whether there had been an increasing or decreasing trend in the recorded numbers of criminal incidents over the relevant period covered in the report. Some month to month variations in the numbers of recorded incidents could be due in part to seasonal factors. The test for trend is not sensitive to seasonal variations; it is sensitive only to a generally increasing or generally decreasing trend over the time period examined.

[6] For the trend tests throughout this publication, where a statistically significant trend was found ($p < .05$), the extent of the trend is indicated by the percentage change in the total number of recorded criminal incidents between the latest two consecutive 12-month periods for 24 month tests; and the average annual percentage change between the first 12-month period and the latest 12-month period for longer tests. A trend test was not performed if there were fewer than 20 incidents in any of the years for the period in question. The result ' . ' indicates that a trend test was not performed. A non-significant test result ($p > .05$) is denoted by 'Stable' or by 'ns' in some larger LGA tables.

[7] In order to present an overview of crime trends in NSW the information in Section 1 relates to aggregate violent and property crime. The State graphs for violent and property offences are plotted as monthly rates² per 100,000 population. The State graph for violent offences shows distinct seasonality and the 12-month moving average (light grey line) indicates a downward path since 2004, which has stabilized over the past five years, whilst the property offences graph and the 6-month moving average (light grey line) both indicate a strong downward path since about 2000. Violent offences include: murder, attempted murder, manslaughter, assault - domestic violence related, assault - non-domestic violence related, assault police, robbery without a weapon, robbery with a firearm, robbery with a weapon not a firearm, sexual assault and indecent assault / act of indecency / other sexual offences. Property offences include: break and enter dwelling, break and enter non-dwelling, motor vehicle theft, steal from motor vehicle, steal from retail store, steal from dwelling, steal from person, stock theft, other theft and fraud.

[8] The ratio to NSW rate statistics are a comparison of a NSW regional rate per 100,000 population to the NSW rate per 100,000 population². A ratio of one indicates parity with the NSW rate. Ratios indicating double the NSW rate (or more) before rounding are highlighted in red, whilst ratios indicating half the NSW rate (or less) before rounding are highlighted in yellow.

1. Australian Bureau of Statistics *Crime Victimization, Australia, Cat. No. 4530.0, ABS, Sydney. See the Australian Bureau of Statistics website for the latest version available at www.abs.gov.au*

2. For the rate calculations, specialised population data were prepared and provided to BOCSAR by the Australian Bureau of Statistics.

APPENDIX 2: DEFINITIONS AND EXPLANATORY NOTES

The data in this report are extracted from the NSW Police Force's Computerised Operational Policing System (COPS). This system is used for record-keeping for all police operations, not just for criminal matters.

In this report:

- the counting units are recorded *criminal incidents* rather than recorded *offences* (except for murder and manslaughter, where the counting units are victims); and
- the data are categorised by date of *reporting* to police (or date of detection by police) rather than by date of *occurrence* of the offence (except for alleged offender data, where the data is categorised by date the alleged offender was proceeded against).

RECORDED CRIMINAL INCIDENTS

A criminal incident is defined as an activity detected by or reported to police which:

- involved the same offender(s);
- involved the same victim(s);
- occurred at the one location;
- occurred during one uninterrupted period of time;
- falls into one offence category;
- falls into one incident type (for example, 'actual', 'attempted', 'conspiracy').

One incident may involve two offenders assaulting the same victim. This would be recorded as one assault incident. Alternatively, suppose a man reports to police that he found his neighbour in the process of damaging his car and, when confronted, the neighbour assaulted him. For such an event, two criminal incidents are recorded because two distinct offence types are involved (malicious damage to property and assault) even though the same parties were involved at the same time and in the same place.

RECORDED VICTIMS

For murder and manslaughter only, the counting units used are victims. Under the definition of a criminal incident (same parties, same time, same place, same offence and same incident type) one murder or manslaughter incident could involve two or more persons being killed. Because of the seriousness of these offences and their relatively small numbers, it is considered to be more appropriate to count the number of victims, rather than the number of criminal incidents. Hence, where one murder incident involves a person killing six people, six murder victims are counted.

OFFENCE CATEGORIES

The classification of offences in this report is broadly based on the Australian and New Zealand Standard Offence Classification (ANZSOC) devised by the Australian Bureau of Statistics (*ABS 2011, third edition, Cat. No. 1234.0*).

For all types of offence classifications used in the report, Appendix 3 lists the offence categories included in the classification. The original offence incident categories are those used by the NSW Police Force and do not necessarily correspond exactly with offences as defined in legislation.

MAJOR OFFENCE CATEGORIES

Major offence categories include the most serious personal violence and property offences. The most serious of these offences is *murder* for which the incident count is the number of victims. Assault offences include the two major offence categories of *domestic violence related assault* and *non-domestic violence related assault*. All sexual offences are categorised by the two major offence types, either as *sexual assault* or *indecent assault, act of indecency and other sexual offences*.

Robbery offences are sorted into three categories by use of weapon: *robbery with a firearm*, *robbery with a weapon not a firearm* or *robbery without a weapon*. The serious theft offences in this group start with the burglary categories of *break and enter - dwelling* and *break and enter - non-dwelling* followed by *motor vehicle theft* and *steal from motor vehicle*. Other theft offences included in the 17 major offences are *steal from retail store*, *steal from dwelling*, *steal from person* and *fraud*. The final property offence listed as a major offence is *malicious damage to property*.

APPENDIX 2: DEFINITIONS AND EXPLANATORY NOTES *continued*

COUNTING PERIOD

Criminal incidents are included in the counting period in which they were reported to or detected by police.

In most cases criminal incidents are recorded on COPS on the day of reporting. However there may be some time delay before the incident gains the status of accepted and verified (which are necessary conditions for inclusion in this report). It is therefore possible for some updating of data to occur. That is, data extracted for a specified period of time may differ according to the date of extraction of the data.

In recent years some historic murders have been re-entered on the COPS system after being referred to the unsolved homicide squad. Murders that were first reported to NSW Police prior to the introduction of COPS in 1995 but recorded on COPS in recent years are excluded from the statistics. Murders which took place prior to 1995 but were first reported to Police in or after 1995 are included in the statistics.

PROCEEDINGS AGAINST ALLEGED OFFENDERS

Police may proceed against alleged offenders through a variety of legal or other processes. Alleged offenders who are not legally proceeded against are not included in this report. Most alleged offenders are referred to the NSW Criminal Courts. The more serious offences are dealt with by way of a Bail Court Attendance Notice (CAN) or a No-Bail CAN. In these instances, the alleged offender is arrested, taken to a police station, fingerprinted and the details of the person and all charges are recorded. A Bail CAN is used when a bail determination is required and a No-Bail CAN is used when a bail determination is not required.

Following changes to the Bail Act in May 2014, No-Bail CANs are used almost solely for incidents of 'Breach of bail conditions' and no bail determination is required because the original determination stands until a new determination is made by the court. Alternatively a Field CAN may be issued by police at other locations. A Future CAN is used for less serious offences.

Some alleged offenders are proceeded against but diverted from the criminal court system. For many minor offences police can issue Infringement Notices. By paying the prescribed penalty the offender avoids having to go to court. Under the *Young Offenders Act 1997*, a juvenile offender can be issued with either a warning, a caution or referred to a youth justice conference.

Youth Justice Conference and cautions data in previous reports have included juvenile offenders initially proceeded against to court by Police and then referred to a conference or given a caution under the *Young Offenders Act* by the court. From the 2015 report, they are now counted as being proceeded against to court by Court Attendance Notice as that was the method of proceeding used by the Police. Consequently data in this report is not comparable with data in previously published reports. Comparable data for previous years is available on request.

Data on warnings under the *Young offenders Act*, is available from January 2010 onwards. Due to changes in how warnings are recorded, this data series can not be compared with warning data previously published. A youth justice conference is a face-to-face meeting between offenders, victims and their support persons. The offending behaviour is discussed and an outcome plan for the offender negotiated. Note that both the police and the courts can refer a young person to a youth justice conference. However, the number of alleged offenders proceeded against by way of a youth justice conference, as shown in Table 4.1, includes only police referrals to a youth justice conference.

Since mid-2008, Police have issued compliance notices for breaches of liquor licensing regulations/legislation. Commonly these are for relatively minor breaches eg fail to display regulated signs. Liquor Offence Compliance Notices have been added to the recorded crime collection from the 2015 report. Consequently data in this report is not comparable with data in previously published reports. Comparable data for all years is available on request.

Each offender or alleged offender appears only once in the table for each event. Note that multiple criminal incidents may be associated with a single event. The processes are arranged in a hierarchy with the offender or alleged offender appearing in the most serious category where multiple incidents are involved. For example if an event involves two incidents and the alleged offender is charged for one incident but receives a caution for the second incident, the alleged offender appears only in the relevant 'proceeded against to court' category.

APPENDIX 2: DEFINITIONS AND EXPLANATORY NOTES *continued*

PROCEEDINGS AGAINST ALLEGED OFFENDERS *continued*

It should be noted that in previous annual recorded crime reports, data on alleged offenders were categorised by date of reporting to police (or date the incident was detected by police). Given there can be a delay between an event being recorded by police and police commencing legal proceedings this resulted in fewer alleged offenders being counted, particularly during the last three months of the reporting period. For this reason, since the 2017 annual report, alleged offender data is categorised by the date the alleged offender was proceeded against. Therefore in Section 4 the year refers to the year in which alleged offenders were proceeded against. It does not refer to the year in which a criminal incident or incidents were reported to police. For example, if an incident was reported to police in 2016 but the alleged offender was not apprehended and charged until 2017, the alleged offender is counted in 2017. As such, Section 4 of this report is not comparable with alleged offender data published prior to the 2017 annual report. Comparable data for all years is available on request.

CLEARED CRIMINAL INCIDENTS

A cleared criminal incident is one, which, in the view of police, has been satisfactorily cleared by the commencement of legal proceedings or otherwise.

An incident is cleared by the commencement of legal proceedings when police have laid a charge or an information against at least one person. The information may have been laid with a view to the issuing of a warrant, Future CAN or other process for the purpose of bringing an offender before the court.

A criminal incident is cleared other than by commencement of legal proceedings when, under normal circumstances, a charge or information would have been laid against at least one person, but, for a variety of reasons, police have been unable to make an arrest, despite knowing the identity of the offender and having sufficient evidence to support a charge. Examples of situations in which an offence may be cleared other than by charge include the following:

- the offender is a juvenile and is cautioned;
- the offender has died before a charge is made or information laid;
- the offender has been committed to a psychiatric institution and is unlikely to be released;
- there is an obstacle to charging, such as diplomatic immunity;
- the complainant or essential witness is dead and proceedings would be aborted;
- the offender is serving a sentence and police consider that no useful purpose would be served by prosecution.

The offence types included in these tables are those where the crime is likely to have been reported to police, rather than discovered or detected by police. Offence types where the numbers of recorded criminal incidents are influenced by police law enforcement activity (drug offences, for example) are excluded. For such offence types, the clear-up percentages are very high because clearing the offence generally occurs simultaneously with its detection (that is, an arrest is made when the crime is discovered). This report contains criminal incidents cleared within 30 and 90 days after the incident was reported to the NSW Police Force.

The clear-up status after 30 days could not be determined for any offences reported in the latest month. Hence, Table 5.1 is for the 24-month period ending one month before the quarterly reporting period. Similarly, the clear-up status after 90 days could not be determined for any offences reported in the latest three months. Hence, Table 5.2 and Figure 5.1 is for the 24-month period ending three months before the quarterly reporting period.

REGIONAL STATISTICS

Statistics are provided on the number of criminal incidents (victims for murder) recorded for each of the Statistical Areas (SAs) of NSW as defined by the Australian Bureau of Statistics (ABS).

Recorded criminal incidents which occurred in correctional, detention or remand centres, however, are not counted in the SA in which the incident occurred. Appendix 4 provides maps indicating the location of each SA. Appendix 5 lists the Local Government Areas (LGAs using 2017 boundaries) within each of the SAs. Note that LGA boundaries change from time to time. A criminal incident is counted within a particular region when the location of the offence falls within that region.

For the rate calculations, specialised population data were prepared and provided to BOCSAR by the Australian Bureau of Statistics.

APPENDIX 3: BOCSAR OFFENCES MAPPED TO POLICE INCIDENT CATEGORIES

BOCSAR offence	NSW Police Force incident categories
Homicide	
Murder	Murder
Attempted murder	Murder – attempted Shoot with intent to murder
Murder accessory, conspiracy	Murder – conspiracy Murder – solicit
Manslaughter – not driving	Manslaughter
Assault	
	<i>Includes any of the following offences disaggregated by whether or not police have flagged the incident as domestic violence related:</i>
Domestic violence related	Actual bodily harm Assault common Grievous bodily harm (including malicious wounding) Shoot with intent other than to murder Spike drink/food
Non-domestic violence related	Actual bodily harm Assault common Grievous bodily harm (including malicious wounding) Shoot with intent other than to murder Spike drink/food
Assault Police	Assault Police officer
Sexual offences	
Sexual assault	Sexual assault – adult victim (16+ years old) Sexual assault – child victim, reported when adult Sexual assault – child victim, reported when child
Indecent assault, act of indecency and other sexual offences	Act of indecency Aggravated act of indecency Indecent assault – adult victim (16+ years old) Indecent assault – child victim, reported when child Indecent assault – child victim, reported when adult Bestiality Carnal knowledge Grooming/procuring Incest Indecent communication Peep or pry Wilful and obscene exposure Other sexual offence
Abduction and kidnaping	Kidnapping/Abduction <input type="checkbox"/> People trafficking

APPENDIX 3: BOCSAR OFFENCES MAPPED TO POLICE INCIDENT CATEGORIES

BOCSAR offence	NSW Police Force incident categories
Robbery	
Robbery without a weapon	<i>Includes any of the following offences in which no weapon was recorded:</i> Demand money with menaces Robbery Robbery with aggravation Robbery with wounding Other robbery
Robbery with a firearm	<i>Includes any of the following offences in which a firearm was recorded as a weapon:</i> Armed robbery Demand money with menaces Robbery Robbery with aggravation Robbery with wounding Other robbery
Robbery with a weapon not a firearm	<i>Includes any of the following offences in which a non firearm weapon was recorded:</i> Armed robbery Demand money with menaces Robbery Robbery with aggravation Robbery with wounding Other robbery
Blackmail and extortion	Extortion/Blackmail
Intimidation, stalking and harassment	Bullying/harassment or intimidation Stalking (since 2017) Child approach (since 2017) Riot and affray Telecommunications offence (<i>includes nuisance phone calls</i>) Threats against Police Violent disorder Unlawful assembly
Other offences against the person	Labour exploitation (<i>includes sexual servitude</i>) Malicious damage with intent to injure/endanger Negligent act cause grievous bodily harm Other offence against the person
Theft	
Break and enter – dwelling	<i>Dwelling includes premises where people reside such as house, home unit, caravan, tent as well as any attachment such as garage, shed, yard and garden.</i> Break/Enter and steal Break/Enter and commit other felony Break/Enter intent to steal Break/Enter intent to commit other felony

APPENDIX 3: BOCSAR OFFENCES MAPPED TO POLICE INCIDENT CATEGORIES

BOCSAR offence	NSW Police Force incident categories
Theft continued:	
Break and enter – non-dwelling	<i>Non-dwelling includes commercial and government premises.</i> Break/Enter and steal Break/Enter and commit other felony Break/Enter intent to steal Break/Enter intent to commit other felony
Receiving or handling stolen goods	Receiving Goods in custody Possess property stolen outside NSW
Motor vehicle theft	Theft of motor cars, motor cycles, and other vehicles / vessels Rebirthing vehicles / vessels
Steal from motor vehicle	Steal from motor vehicle
Steal from retail store	Steal from retail store
Steal from dwelling	Steal from dwelling Other stealing <i>occurring in a residential dwelling</i>
Steal from person	Steal from person
Stock theft	Steal stock (Non-domestic animal)
Fraud	Company/corporate offence Computer crime Copyright/Intellectual property/Trademark Corrupt commission/practices Corrupt payment (receive or pay) Counterfeit currency Deception offence Embezzlement Fail to pay Forgery (since 2017) Fraudulent misappropriation Larceny clerk/servant/bailee Make/use false instrument Misappropriate cheques/funds Possess false instrument Publish false misleading statement Receiving (fraud related) Scams - obtain funds (since 2017) Scams - selling (since 2017) Unauthorised access of funds (since 2017) Deal/supply false identity documents (since 2017) Deal/supply false information (since 2017) Equipment to make false identity documents (since 2017) Make false identity documents (since 2017) Possess false identity documents (since 2017) Possess identity information (since 2017) Use false identity documents (since 2017) Other fraud

APPENDIX 3: BOCSAR OFFENCES MAPPED TO POLICE INCIDENT CATEGORIES

BOCSAR offence	NSW Police Force incident categories
Theft continued: Other theft	Steal from dwelling <i>occurring somewhere other than a residential or non-residential dwelling</i> (e.g. from hostels, motels, boarding houses etc) Steal domestic animal or bird Steal from marine vessel Steal vessel Other stealing <i>occurring somewhere other than a dwelling</i> (e.g. in outdoor/public places)
Arson	<i>Fire incident where classified as deliberate:</i> Bushfire Structure Vehicle (e.g. aircraft/motor vehicle/train/vessel) Other commodity
Malicious damage to property	Graffiti Malicious damage to property Public place – damage fountain/wall etc. Public place – damage shrine/monument
Drug offences	
Possession and/or use of cocaine	Possess drug <i>where drug type is cocaine</i> Use or administer drug <i>where drug type is cocaine</i> Item/object found <i>where drug type is cocaine</i>
Possession and/or use of narcotics	Possess drug <i>where drug type is narcotics</i> Use or administer drug <i>where drug type is narcotics</i> Item/object found <i>where drug type is narcotics</i>
Possession and/or use of cannabis	Possess drug / plant <i>where drug type is cannabis</i> Use or administer drug <i>where drug type is cannabis</i> Item/object found <i>where drug type is cannabis</i>
Possession and/or use of amphetamines	Possess drug <i>where drug type is amphetamines</i> Use or administer drug <i>where drug type is amphetamines</i> Item/object found <i>where drug type is amphetamines</i>
Possession and/or use of ecstasy	Possess drug <i>where drug type is ecstasy</i> Use or administer drug <i>where drug type is ecstasy</i> Item/object found <i>where drug type is ecstasy</i>
Possession and/or use of other drugs	Possess drug <i>where drug type is not cocaine, narcotics, cannabis, amphetamines or ecstasy</i> Use or administer drug <i>where drug type is not cocaine, narcotics, cannabis, amphetamines or ecstasy</i> Item/object found <i>where drug type is not cocaine, narcotics, cannabis, amphetamines or ecstasy</i>
Dealing, trafficking in cocaine	Supply drug <i>where drug type is cocaine</i>
Dealing, trafficking in narcotics	Supply drug <i>where drug type is narcotics</i>

APPENDIX 3: BOCSAR OFFENCES MAPPED TO POLICE INCIDENT CATEGORIES

BOCSAR offence	NSW Police Force incident categories
Drug offences continued:	
Dealing, trafficking in cannabis	Supply drug/plant <i>where drug/plant type is cannabis</i>
Dealing, trafficking in amphetamines	Supply drug <i>where drug type is amphetamines</i>
Dealing, trafficking in ecstasy	Supply drug <i>where drug type is ecstasy</i>
Dealing, trafficking in other drugs	Supply drug/plant <i>where drug/plant type is not cocaine, narcotics, cannabis, amphetamines or ecstasy</i>
Cultivating cannabis	Cultivation
Manufacture drug	Manufacture drug
Importing drugs	Import drug/plant
Other drug offences	Forge and/or utter prescription Possess drug utensil Other drug detection/seizure offence
Prohibited and regulated weapons offences	Bomb hoax or threat Discharge firearm into premises Licence offence Firearms dealer offence Firearms not ensure safekeeping Improper storage of explosives Person search - Item/object found <i>where item/object is a weapon</i> Possess explosive/dangerous article Possess prohibited weapon/article Possess shortened firearm Possess whilst unlicensed Sell prohibited weapon/article Shorten firearm Trespass with firearm Unlawful handling/access/supply of explosives Unlawfully discharge firearm Use firearm under influence Use prohibited weapon/article Other explosives offence Other firearm licencing offence Other firearm offence Other prohibited weapon/article offence
Disorderly conduct	
Trespass	Trespass Remain inclosed lands
Offensive conduct	Offensive behaviour
Offensive language	Offensive language
Criminal intent	Armed with intent Disguised with intent Enter land with intent Intent to repeat indictable offence Possess implements

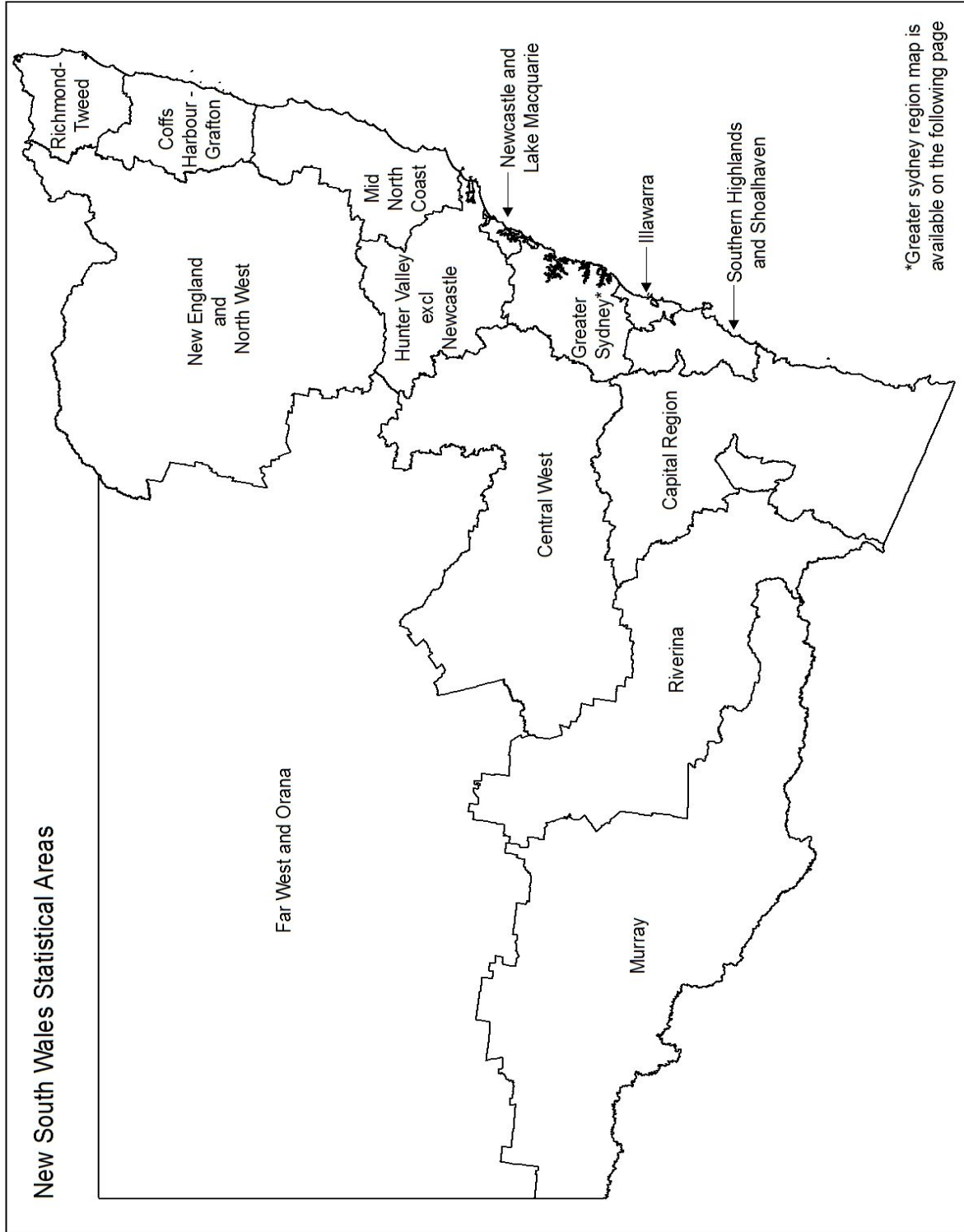
APPENDIX 3: BOCSAR OFFENCES MAPPED TO POLICE INCIDENT CATEGORIES

BOCSAR offence	NSW Police Force incident categories
Betting and gaming offences	Conduct/play illegal betting Conduct/play illegal game Own/manage premises – betting Own/manage premises – gaming Other gaming offence
Liquor offences	Consume alcohol in alcohol-free zone Consume/possess alcohol in public by minor Licensing legislation offence: – Offence by licensee/employee/secretary – Offence by minor – Offence by customer (not minor) – Supply liquor to juvenile – Offence against registered clubs legislation
Pornography offences	Possess/disseminate child pornography Possess/publish indecent material
Prostitution offences	Soliciting/prostitution in public Prostitution – premises Prostitution – live off earnings Child prostitution Other vice offence
Against justice procedures	
Escape Custody	Escapee – Corrective Services custody Escapee – Department of Community Services custody Escapee – Police custody Escapee – Other custody
Breach Apprehended Violence Order	Breach Apprehended Violence Order – domestic Breach Apprehended Violence Order – personal
Breach bail conditions	Breach bail conditions Breach control order
Fail to appear	Fail to appear
Resist or hinder officer	Refuse direction Refuse direction continue intoxication and disorder Refuse direction intoxicated person Refuse to be searched Refuse to produce object Resist/hinder officer
Other offences against justice procedures	Breach of recognizance Contravene Child Protection Prohibition Order (CPPO) Other judicial offence
Transport regulatory offences	Transport offence (<i>includes offences on the rail network such as travelling without a valid ticket, smoking, drinking or using offensive language on a train or railway land</i>) Buffer riding

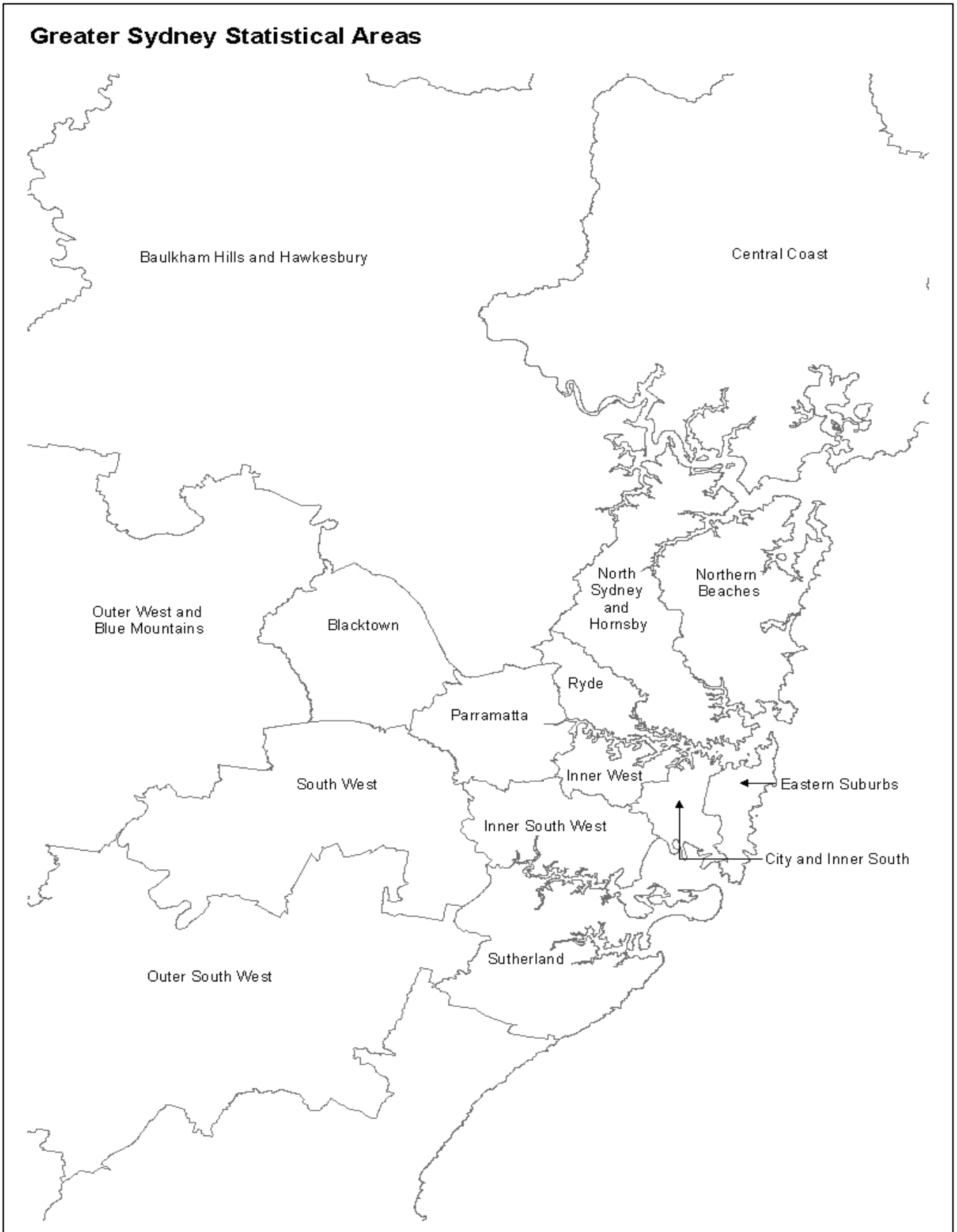
APPENDIX 3: BOCSAR OFFENCES MAPPED TO POLICE INCIDENT CATEGORIES

<i>BOCSAR offence</i>	<i>NSW Police Force incident categories</i>
Other offences	Animals - Dog offences Cyber Breach/Attack Family law offence Immigration/customs offence Obstruction Offence against transport service Other street offences (carry cutting weapon, offensive implement) Public mischief Terrorism offences (e.g. associating with terrorist organisations, financing terrorism etc.) Other miscellaneous offences Offences under various acts: <i>Animals - Prevention Of Cruelty Acts</i> <i>Bush Fire Act</i> <i>Child Protection Act</i> <i>Local Government Act</i> <i>Marine/Waterway Act</i> <i>Pawnbrokers Act</i> <i>Postal Services Act</i> <i>Security Industry Act</i> <i>Sydney Harbour Bridge Act</i> <i>Tattoo Parlours Act</i>

APPENDIX 4: NSW & GREATER SYDNEY STATISTICAL AREA MAPS



APPENDIX 4: NSW & GREATER SYDNEY STATISTICAL AREA MAPS



APPENDIX 5: LGAs IN GREATER SYDNEY STATISTICAL AREAS***Greater Sydney Statistical Areas***

<i>Baulkham Hills and Hawkesbury</i> Hawkesbury* The Hills Shire*	<i>Blacktown</i> Blacktown	<i>Central Coast</i> Central Coast
<i>City and Inner South</i> Sydney*	<i>Eastern Suburbs</i> Randwick* Waverley Woollahra	<i>Inner South West</i> Bayside* Canterbury-Bankstown* Georges River
<i>Inner West</i> Burwood Canada Bay Inner West* Strathfield*	<i>North Sydney and Hornsby</i> Hornsby* Ku-ring-gai Lane Cove Mosman North Sydney Willoughby	<i>Northern Beaches</i> Northern Beaches
<i>Outer South West</i> Camden* Campbelltown* Wollondilly*	<i>Outer West and Blue Mountains</i> Blue Mountains* Penrith*	<i>Parramatta</i> Cumberland* Parramatta*
<i>Ryde</i> Hunters Hill Ryde*	<i>South West</i> Fairfield* Liverpool*	<i>Sutherland</i> Sutherland Shire*

* These LGAs span across two or more Statistical Areas.

These LGAs are listed under the Greater Sydney Statistical Areas which contain the largest area of each LGA.

APPENDIX 5: LGAs IN NSW REGIONAL STATISTICAL AREAS***NSW Regional Statistical Areas******Capital Region***

Bega Valley
Eurobodalla
Goulburn Mulwaree
Hilltops
Queanbeyan-Palerang Regional
Snowy Monaro Regional*
Upper Lachlan Shire
Yass Valley*

Central West

Bathurst Regional
Bland*
Blayney
Cabonne*
Cowra
Forbes
Lachlan*
Lithgow
Mid-Western Regional*
Oberon*
Orange
Parkes
Weddin

Coffs Harbour - Grafton

Bellingen*
Clarence Valley*
Coffs Harbour

Far West and Orana

Bogan
Bourke
Brewarrina
Broken Hill
Central Darling
Cobar
Coonamble
Dubbo Regional*
Gilgandra
Narromine
Unincorporated Far West
Walgett
Warren
Warrumbungle Shire*

Hunter Valley excluding Newcastle

Cessnock
Dungog
Maitland*
Muswellbrook
Port Stephens*
Singleton*
Upper Hunter Shire*

Illawarra

Kiama*
Shellharbour
Wollongong

Mid North Coast

Kempsey
Lord Howe Island
Mid-Coast*
Nambucca*
Port Macquarie-Hastings

Murray

Albury
Balranald
Berrigan
Edward River
Federation*
Greater Hume Shire*
Hay
Murray River
Wentworth

New England and North West

Armidale Regional*
Glen Innes Severn
Gunnedah
Gwydir
Inverell
Liverpool Plains*
Moree Plains
Narrabri
Tamworth Regional
Tenterfield
Uralla
Walcha

Newcastle and Lake Macquarie

Lake Macquarie*
Newcastle

Richmond - Tweed

Ballina
Byron
Kyogle
Lismore
Richmond Valley*
Tweed

Riverina

Carrathool*
Coolamon
Cootamundra-Gundagai
Griffith
Junee
Leeton
Lockhart*
Murrumbidgee*
Narrandera
Snowy Valleys*
Temora
Wagga Wagga

Southern Highlands and Shoalhaven

Shoalhaven*
Wingecarribee*

* These LGAs span across two or more Statistical Areas.

These LGAs are listed under the NSW Regional Statistical Areas which contain the largest area of each LGA.