
NEW SOUTH WALES CUSTODY STATISTICS

QUARTERLY UPDATE
JUNE 2018



NSW Bureau of Crime
Statistics and Research

CONTENTS

This report presents 24 months of reception, discharge and custody population data and comparisons between the current and previous quarter for age, gender, indigenous status, most serious offence and the average length of stay.

Separate figures are presented for juveniles and adults.

The counting unit is a custodial episode. An individual will be counted multiple times in a period if they have multiple custodial episodes in that period.

SCOPE

The data in this report are extracted from the Corrective Services NSW (CSNSW) Offender Integrated Management System (OIMS) and the Juvenile Justice NSW (JJNSW) Client Information Management System (CIMS).

The adult custody population figures include only those persons held in gazetted correctional centres managed by CSNSW. This includes: persons managed as forensic patients, persons held after expiry of their sentence awaiting deportation and persons awaiting extradition to another jurisdiction. Persons in the Special Purpose Centre at Long Bay Correctional Centre are not included.

In addition to gazetted correctional centres, CSNSW manages a number of police/court cell complexes. This report excludes persons received into and then discharged from a CSNSW-managed 24 hour police/court cell complex without entering a gazetted correctional centre. Adults refused police bail but not held in a gazetted correctional centre are not included. An exception to this is the adult prison population forecast which does include these non-gazetted correctional centres.

Custody population figures are counted as at midnight on the last day of the month or quarter as appropriate. Reception and discharge figures are those during each month or quarter as appropriate.

Refer to the Glossary at the back of the report for detailed descriptions of the terms used in the report.

ACKNOWLEDGEMENTS

Juvenile custody data are provided by the Research and Information Section of JJNSW. Adult custody data are provided by the Corrections Research, Evaluation and Statistics (CRES) section of CSNSW. BOCSAR is grateful for the support provided by both areas in supplying the data for this report and advising on its interpretation.

NOTE

The adult custody data presented in this report will differ from data reported by CSNSW due to data extract timing differences.

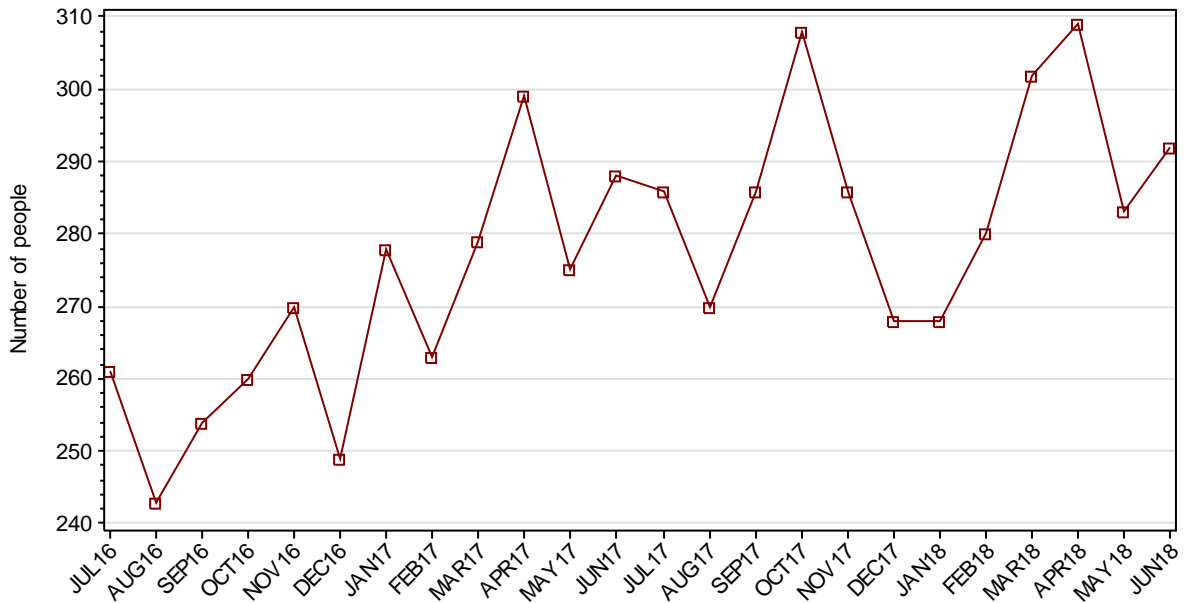
Contents

PART 1 JUVENILES	4
SECTION 1.1 JUVENILE CUSTODY POPULATION	5
1.1.1 By Month	5
1.1.2 By Legal Status	5
1.1.3 By Indigenous Status.....	6
1.1.4 By Legal Status (Indigenous Only).....	6
1.1.5 Profile	7
1.1.6 Legal Status Changed from Remand to Sentenced	7
1.1.7 Remand Population by Most Serious Offence	8
1.1.8 Sentenced Population by Most Serious Offence	9
1.1.9 Juvenile Custody Forecast	10
SECTION 1.2 JUVENILE CUSTODY RECEPTIONS	11
1.2.1 By Month	11
1.2.2 By Legal Status	11
SECTION 1.3 JUVENILE CUSTODY DISCHARGES	12
1.3.1 By Month	12
1.3.2 Length of Stay	12
1.3.3 By Discharge Type	13
1.3.4 By Discharge Type (Excluding Bail).....	13
1.3.5 Ratio Of Reception To Discharges.....	14
PART 2 ADULTS	15
SECTION 2.1 ADULT CUSTODY POPULATION	16
2.1.1 By Month	16
2.1.2 By Indigenous Status.....	16
2.1.3 Remand Population	17
2.1.4 Sentenced Population.....	17
2.1.5 Indigenous Remand Population	18
2.1.6 Indigenous Sentenced Population	18
2.1.7 Profile	19
2.1.8 Legal Status Changed from Remand to Sentenced	19
2.1.9 Remand Population by Most Serious Offence	20
2.1.10 Sentenced Population by Most Serious Offence	21
2.1.11 Prison Population Forecast.....	22
SECTION 2.2 ADULT CUSTODY RECEPTIONS	23
2.2.1 By Month	23
2.2.2 Remand Reception	23
2.2.3 Sentenced Reception.....	24
SECTION 2.3 ADULT CUSTODY DISCHARGES	25
2.3.1 By Month	25
2.3.2 Length of Stay	25
2.3.3 By Discharge Type	26
2.3.4 Ratio Of Reception To Discharges.....	26
PART 3 DATA TABLES	27
PART 4 GLOSSARY	32

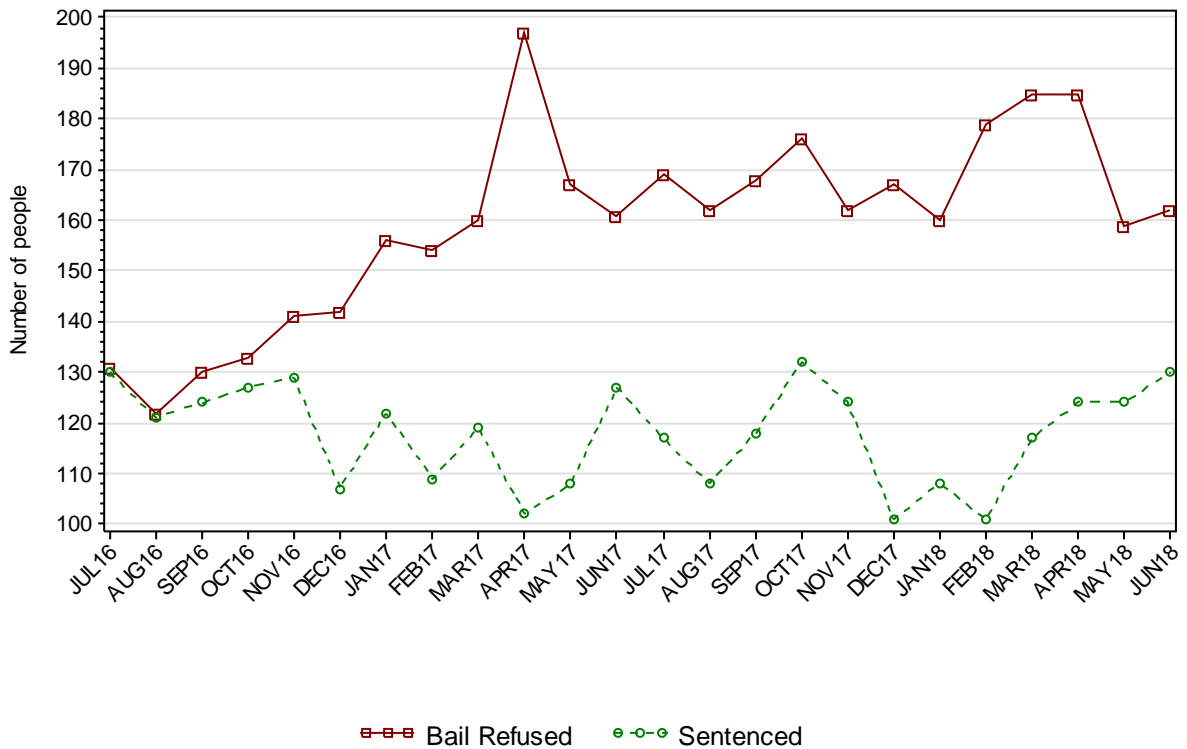
Part 1 JUVENILES

SECTION 1.1 JUVENILE CUSTODY POPULATION

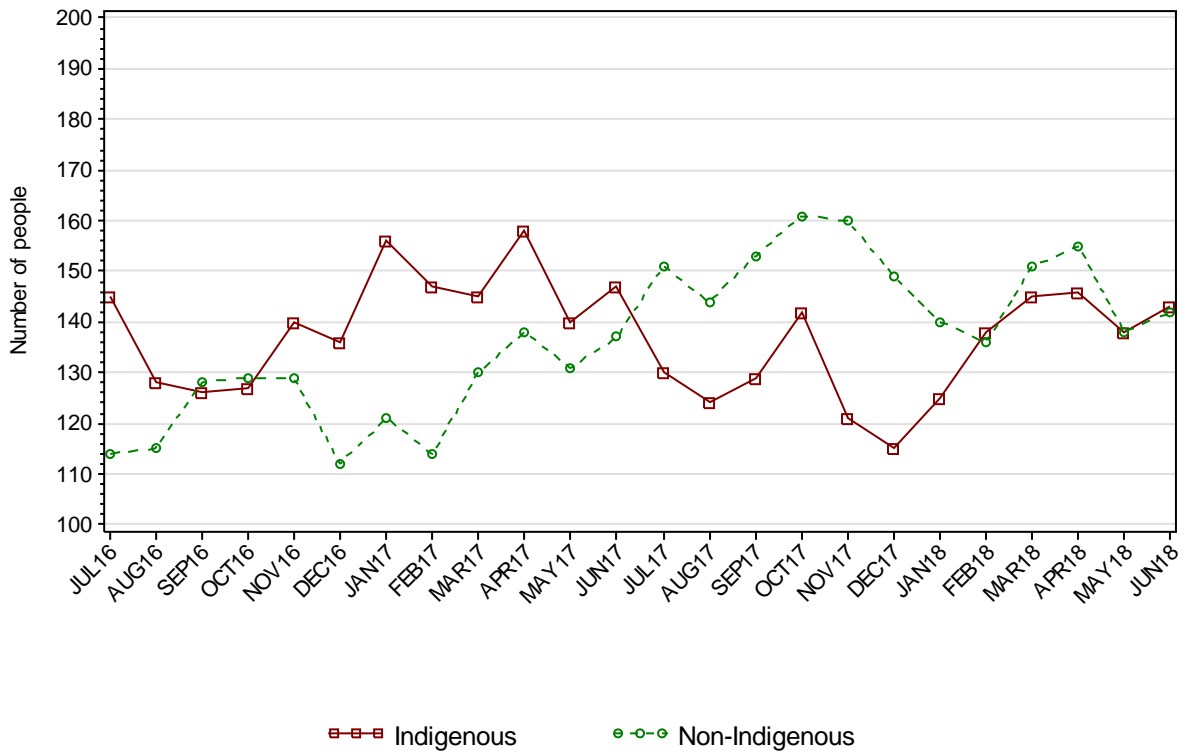
1.1.1 JUVENILE CUSTODY POPULATION AT END OF MONTH



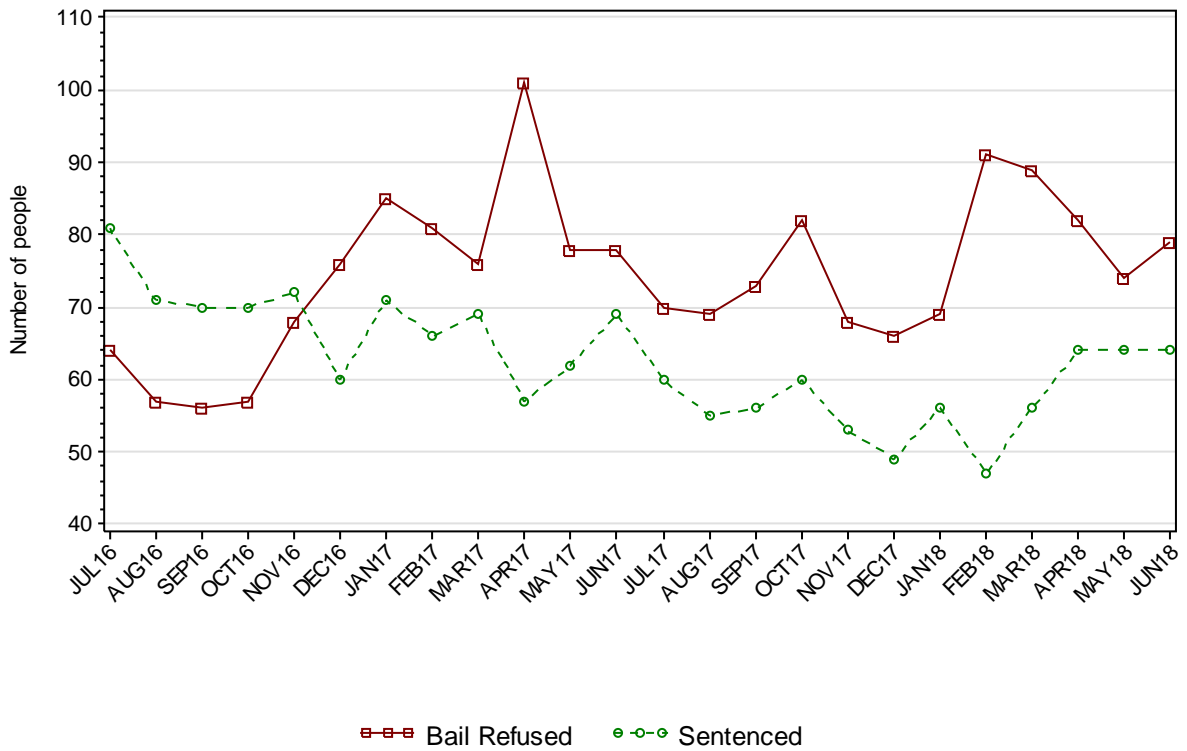
1.1.2 JUVENILE CUSTODY POPULATION BY LEGAL STATUS



1.1.3 JUVENILE CUSTODY POPULATION BY INDIGENOUS STATUS



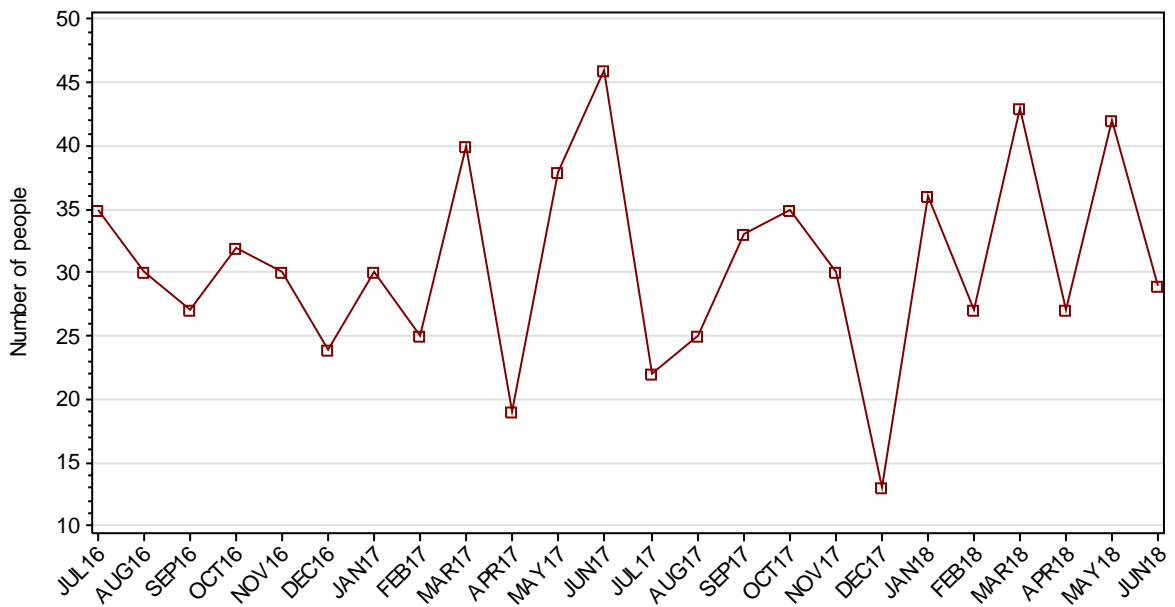
1.1.4 INDIGENOUS JUVENILE CUSTODY POPULATION BY LEGAL STATUS



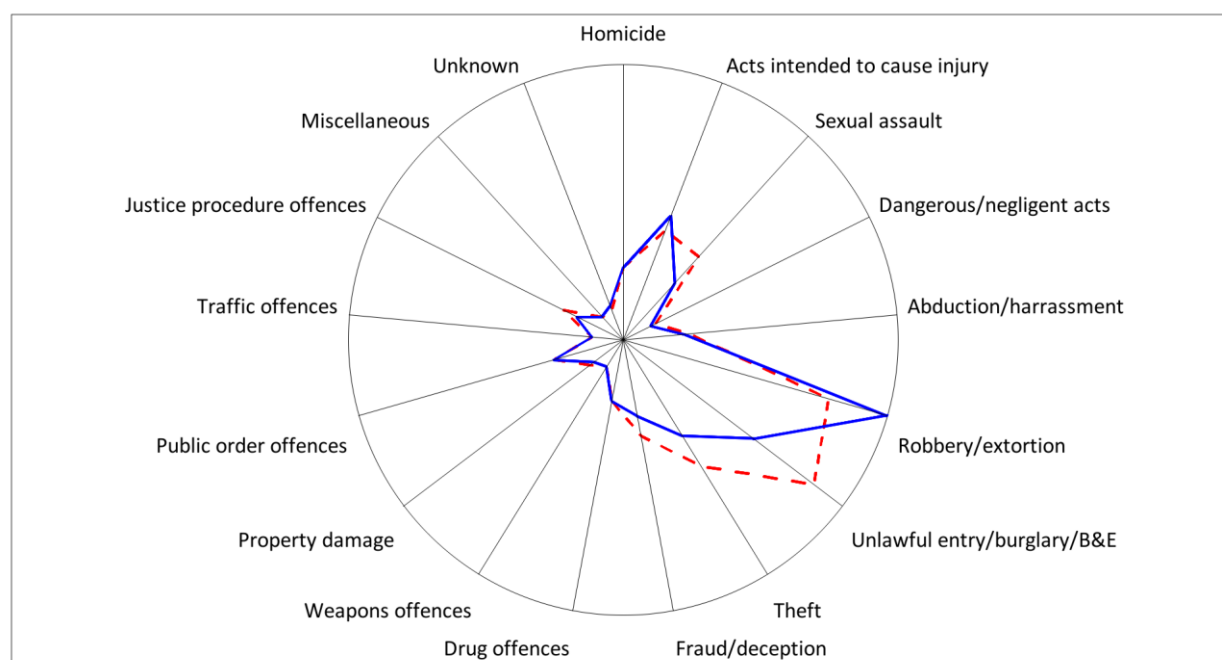
1.1.5 JUVENILE CUSTODY PROFILE AT END OF QUARTER

		Police Bail Refused		Court Bail Refused		Sentenced		Total	
		MAR18	JUN18	MAR18	JUN18	MAR18	JUN18	MAR18	JUN18
		Total Male	Count	4	6	159	136	111	122
	Avg Age	15.5	16.3	16.3	16.1	17.0	16.9	16.6	16.5
Total Female	Count	2	2	20	18	6	8	28	28
	Avg Age	13.0	16.0	16.1	14.9	17.2	16.4	16.1	15.4
Indigenous Male	Count	4	3	75	63	54	59	133	125
	Avg Age	15.5	15.7	16.2	16.0	16.8	16.7	16.4	16.3
Indigenous Female	Count	1	2	9	11	2	5	12	18
	Avg Age	13.0	16.0	15.3	14.6	17.0	16.0	15.4	15.2
Total	Count	6	8	179	154	117	130	302	292
	Avg Age	14.7	16.3	16.3	16.0	17.0	16.8	16.5	16.4

1.1.6 JUVENILES IN CUSTODY: NUMBER WHOSE LEGAL STATUS CHANGED DURING MONTH FROM REMAND TO SENTENCED



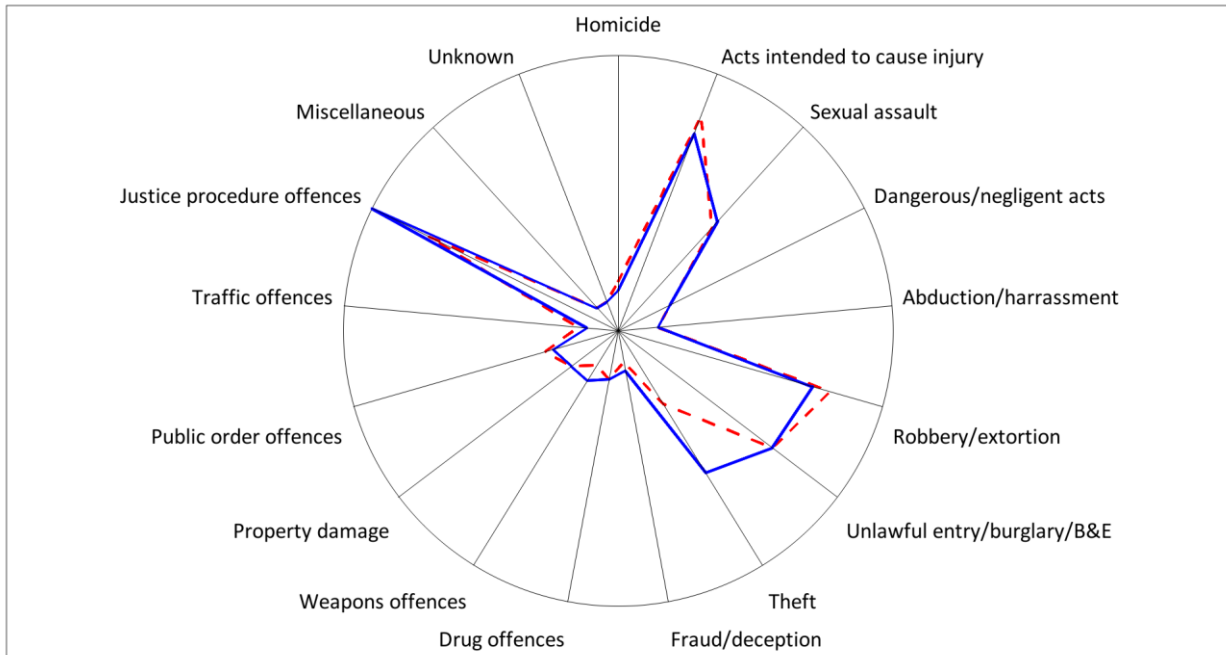
1.1.7 JUVENILE REMAND POPULATION BY MOST SERIOUS OFFENCE



As At: - - 31MAR18 — 30JUN18

	31MAR18		30JUN18	
	Number	% of Total	Number	% of Total
Homicide	8	4.3	8	4.9
Acts intended to cause injury	17	9.2	20	12.3
Sexual assault	16	8.6	9	5.6
Dangerous/negligent acts	1	0.5	0	0
Abduction/harrassment	7	3.8	6	3.7
Robbery/extortion	36	19.5	48	29.6
Unlawful entry/burglary/B&E	41	22.2	26	16.0
Theft	23	12.4	16	9.9
Fraud/deception	13	7.0	9	5.6
Drug offences	6	3.2	6	3.7
Weapons offences	0	0	0	0
Property damage	2	1.1	1	0.6
Public order offences	8	4.3	8	4.9
Traffic offences	0	0	0	0
Justice procedure offences	7	3.8	4	2.5
Miscellaneous	0	0	0	0
Unknown	0	0	1	0.6
Total	185	100.0	162	100.0

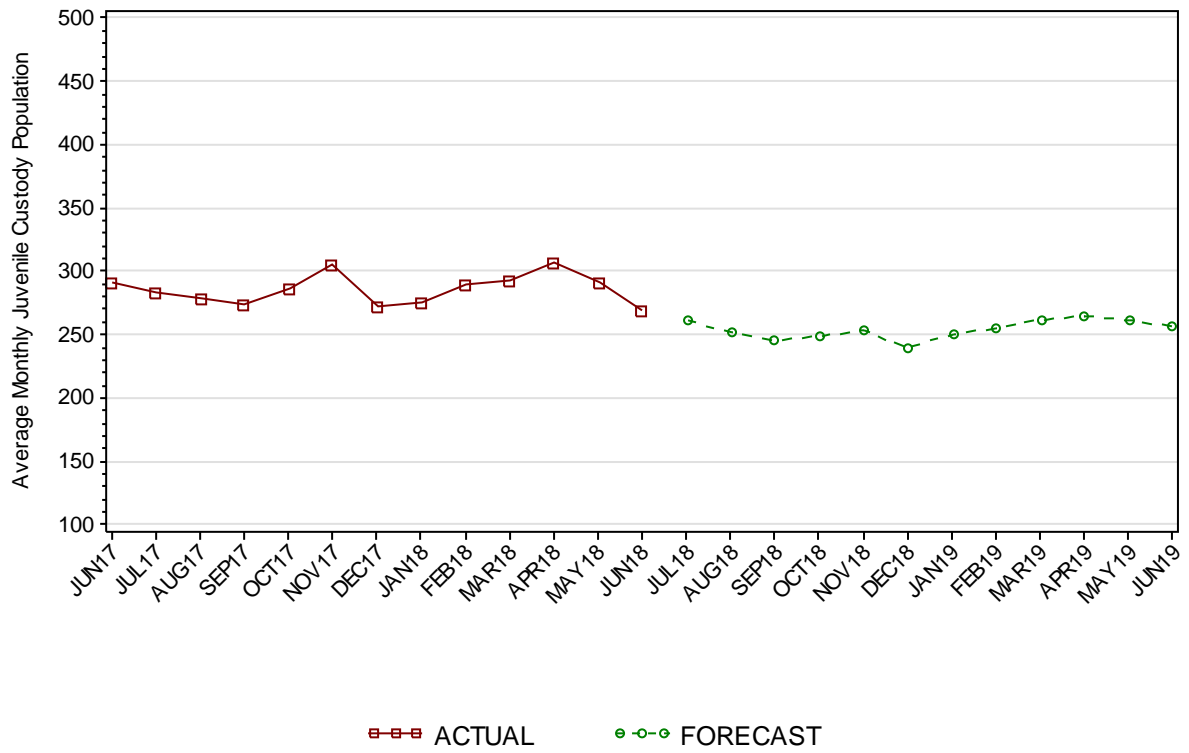
1.1.8 JUVENILE SENTENCED POPULATION BY MOST SERIOUS OFFENCE



As At:

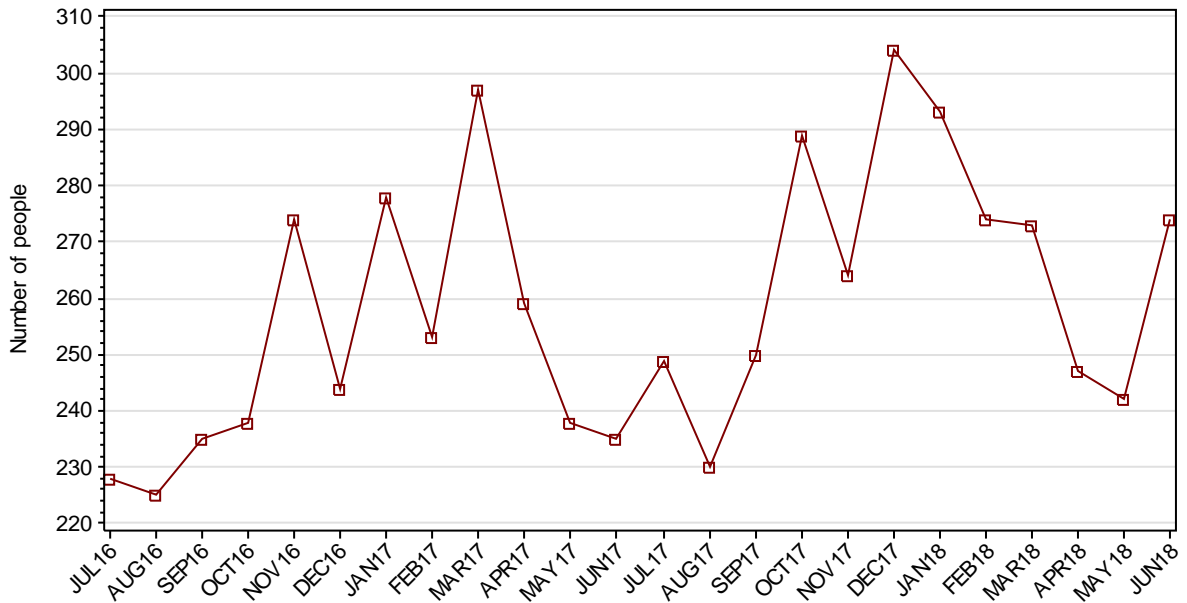
	31MAR18		30JUN18	
	Number	% of Total	Number	% of Total
Homicide	2	1.7	1	0.8
Acts intended to cause injury	22	18.8	20	15.4
Sexual assault	12	10.3	13	10.0
Dangerous/negligent acts	3	2.6	3	2.3
Abduction/harrassment	1	0.9	1	0.8
Robbery/extortion	21	17.9	19	14.6
Unlawful entry/burglary/B&E	18	15.4	18	13.8
Theft	6	5.1	15	11.5
Fraud/deception	0	0	1	0.8
Drug offences	2	1.7	2	1.5
Weapons offences	1	0.9	3	2.3
Property damage	3	2.6	3	2.3
Public order offences	5	4.3	4	3.1
Traffic offences	1	0.9	0	0
Justice procedure offences	20	17.1	27	20.8
Miscellaneous	0	0	0	0
Unknown	0	0	0	0
Total	117	100.0	130	100.0

1.1.9 JUVENILE CUSTODY FORECAST

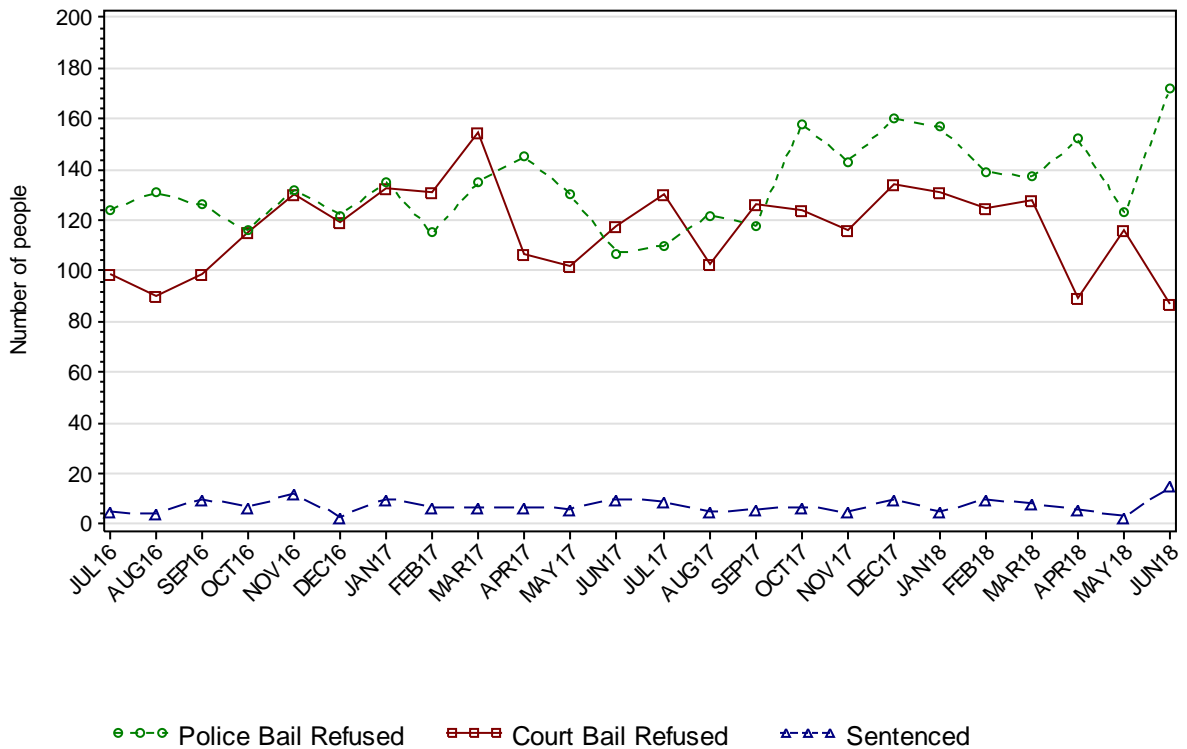


SECTION 1.2 JUVENILE CUSTODY RECEPTIONS

1.2.1 JUVENILES RECEIVED INTO CUSTODY DURING MONTH

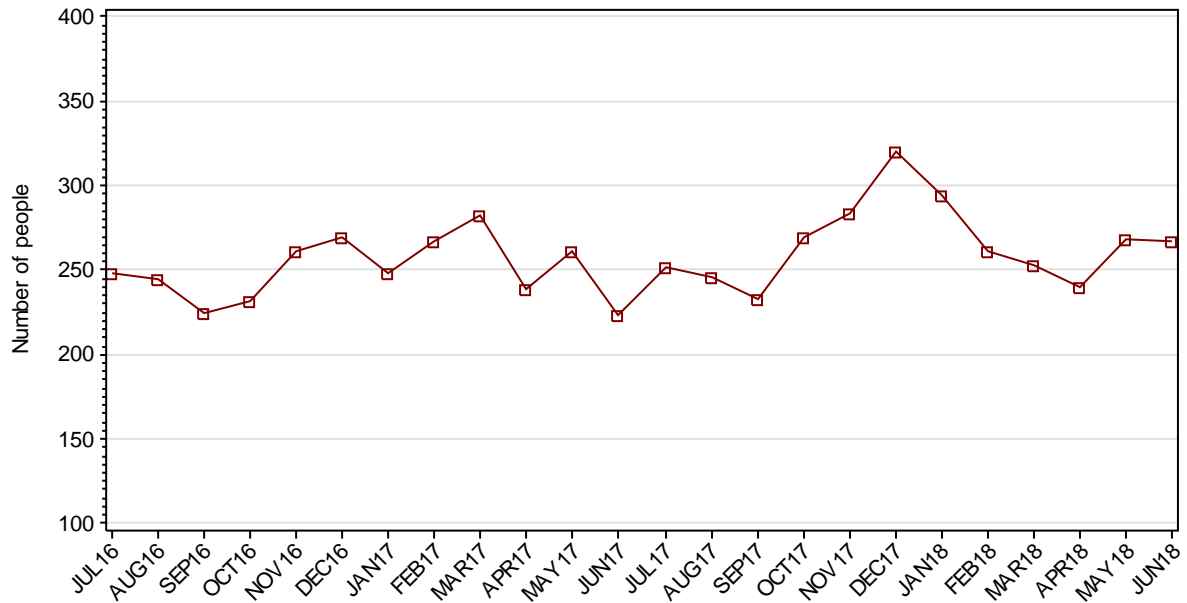


1.2.2 JUVENILES RECEIVED INTO CUSTODY BY LEGAL STATUS



SECTION 1.3 JUVENILE CUSTODY DISCHARGES

1.3.1 JUVENILES DISCHARGED FROM CUSTODY DURING MONTH

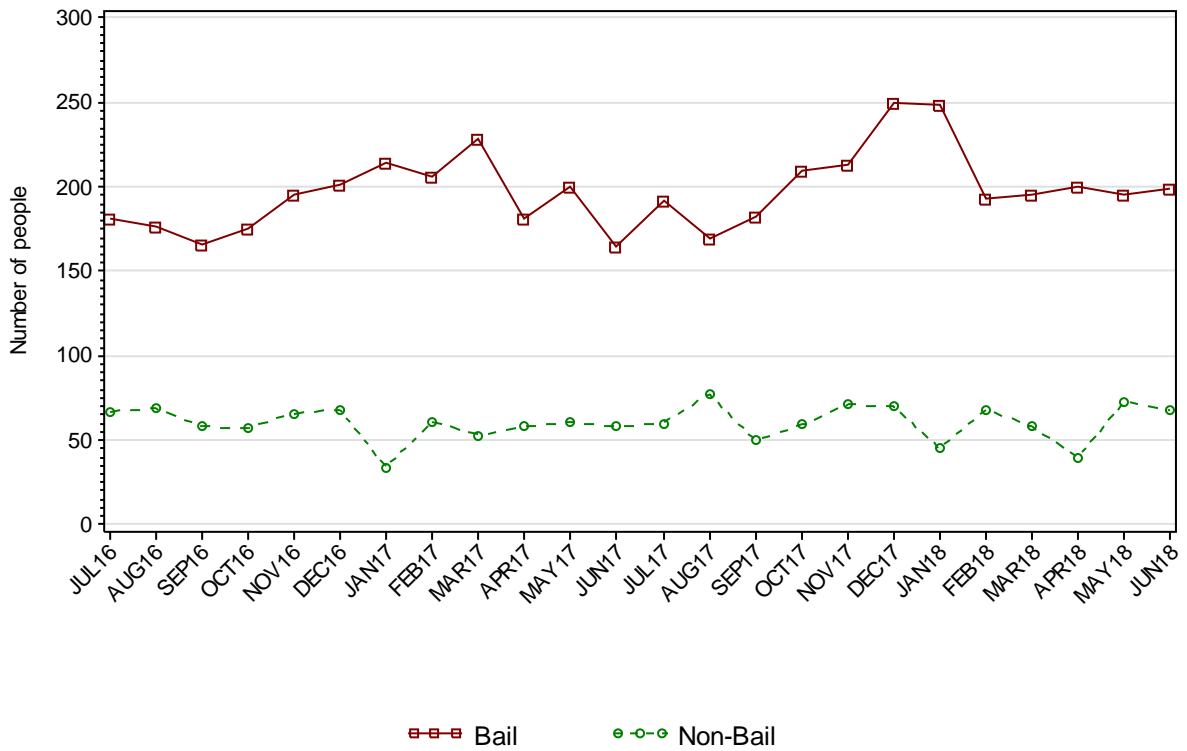


1.3.2 AVERAGE LENGTH OF STAY FOR JUVENILES DISCHARGED FROM CUSTODY EACH QUARTER

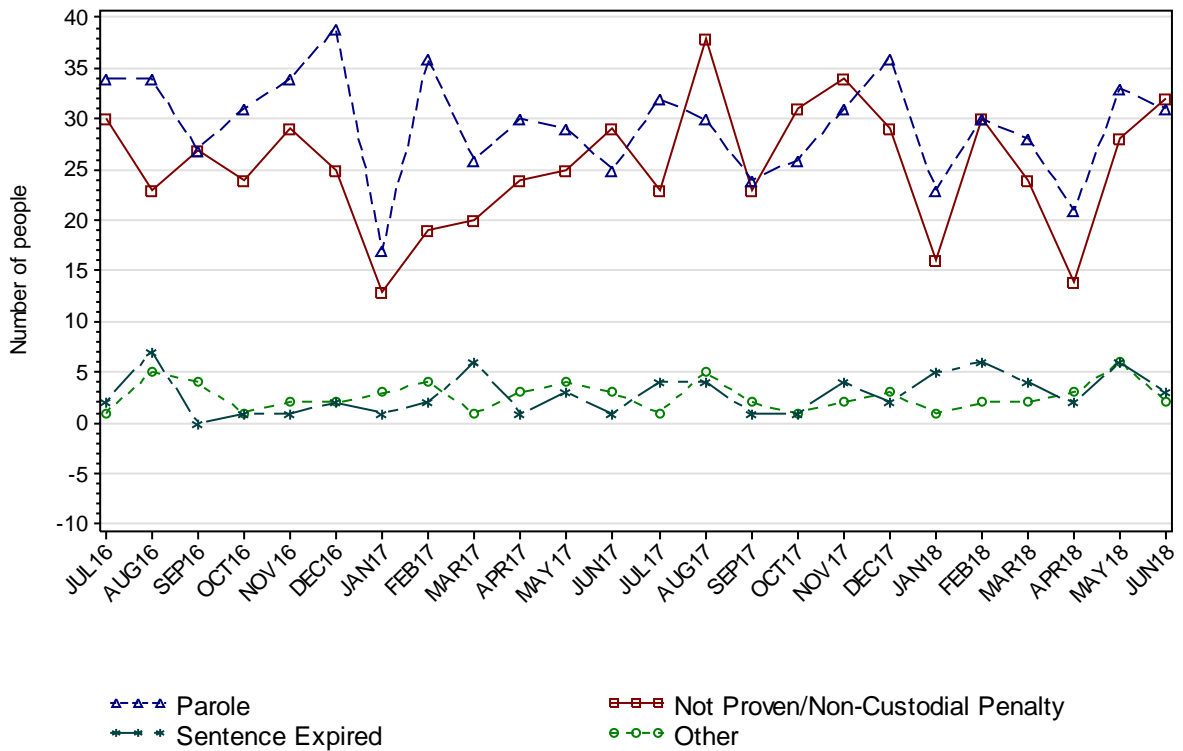
		Remand Custody Only		Sentenced Custody Only		Remand to Sentenced Custody	
		MAR18	JUN18	MAR18	JUN18	MAR18	JUN18
Total Male	Avg Days	12.9	10.5	94.5	156.3	172.8	174.9
	Number	520	484	21	20	76	82
Total Female	Avg Days	5.8	7.1	71.3	40.0	128.0	142.3
	Number	176	179	4	3	11	7
Indigenous Male	Avg Days	12.7	11.9	93.6	148.3	167.1	173.9
	Number	246	221	9	9	36	40
Indigenous Female	Avg Days	6.7	6.9	90.0	40.0	127.4	73.7
	Number	95	69	2	3	5	3
Total	Avg Days	11.1	9.6	90.8	141.1	167.2	172.3
	Number	696	663	25	23	87	89

Note: Length of Stay for Remand to Sentenced Custody is from the date of reception on remand to date of discharge after serving sentence.

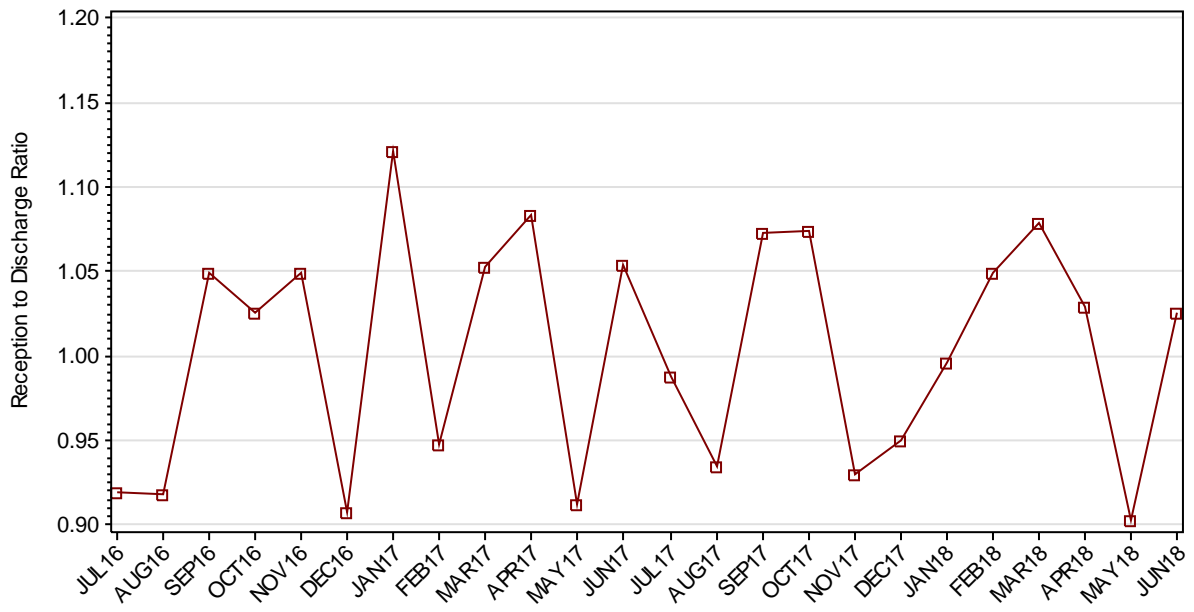
1.3.3 JUVENILES BY DISCHARGE TYPE



1.3.4 JUVENILES BY DISCHARGE TYPE (EXCLUDING BAIL)



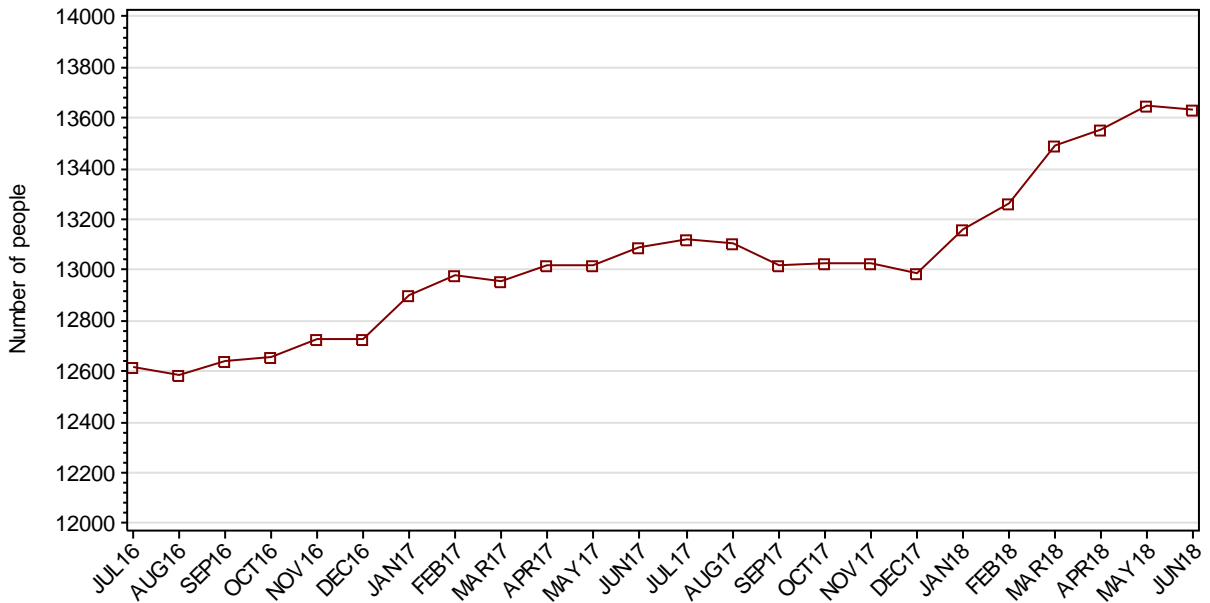
1.3.5 RATIO OF JUVENILE RECEPTIONS TO DISCHARGES



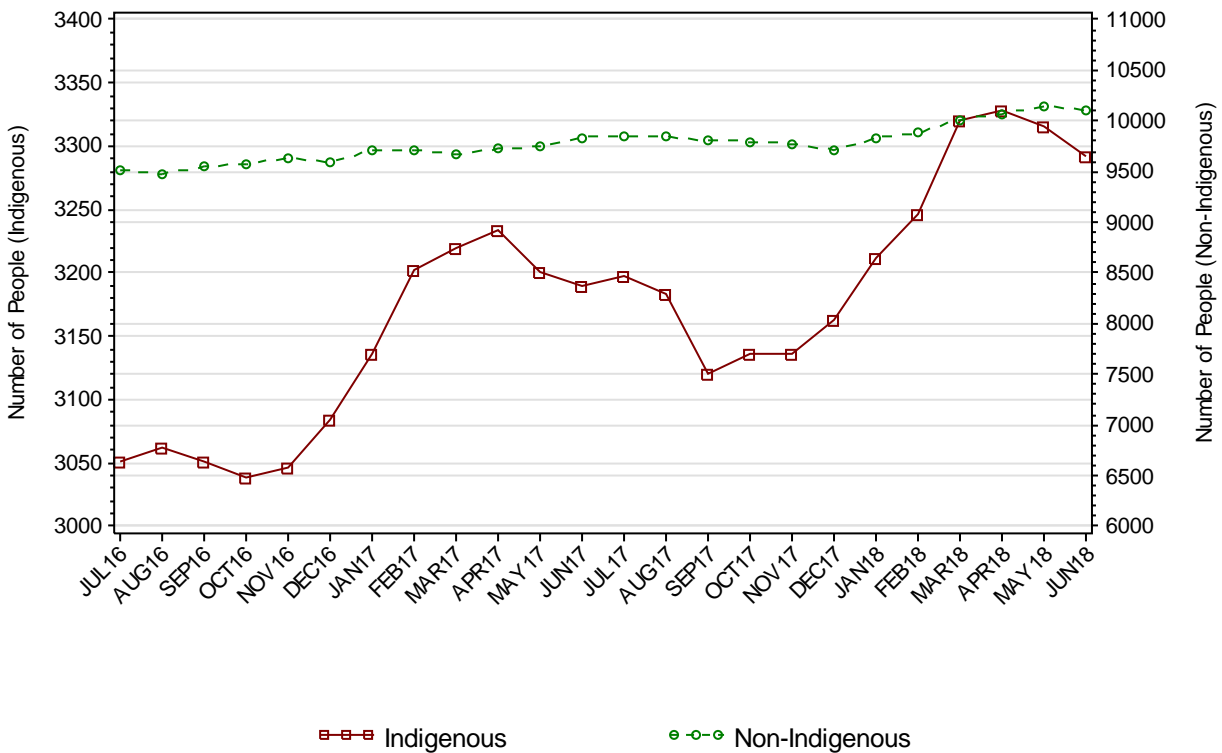
Part 2 ADULTS

SECTION 2.1 ADULT CUSTODY POPULATION

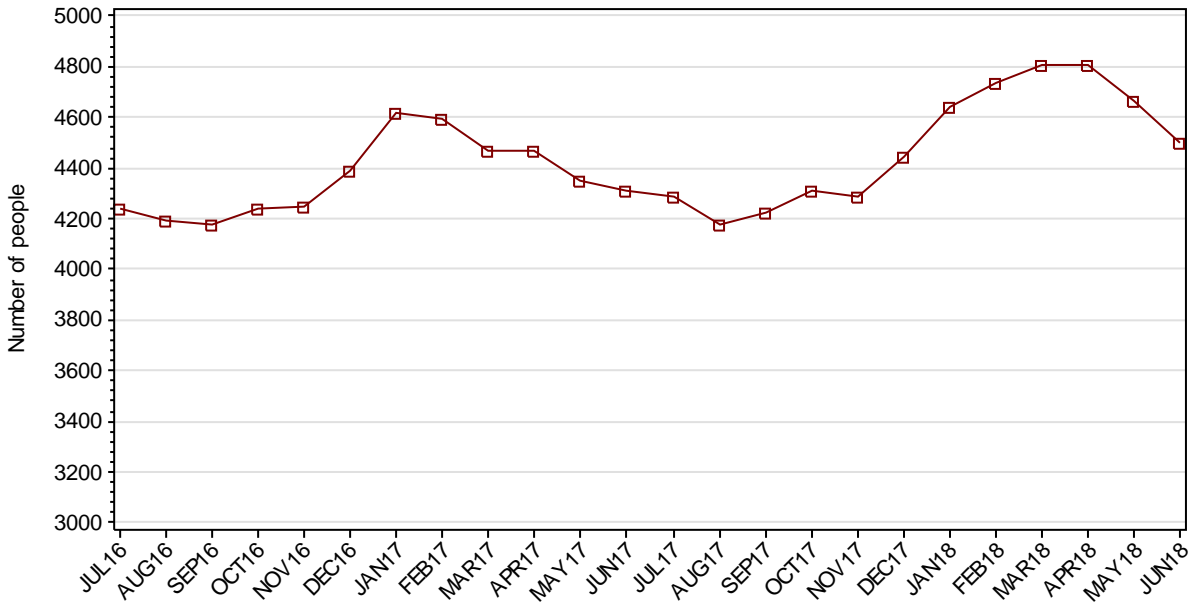
2.1.1 ADULT CUSTODY POPULATION AT END OF MONTH



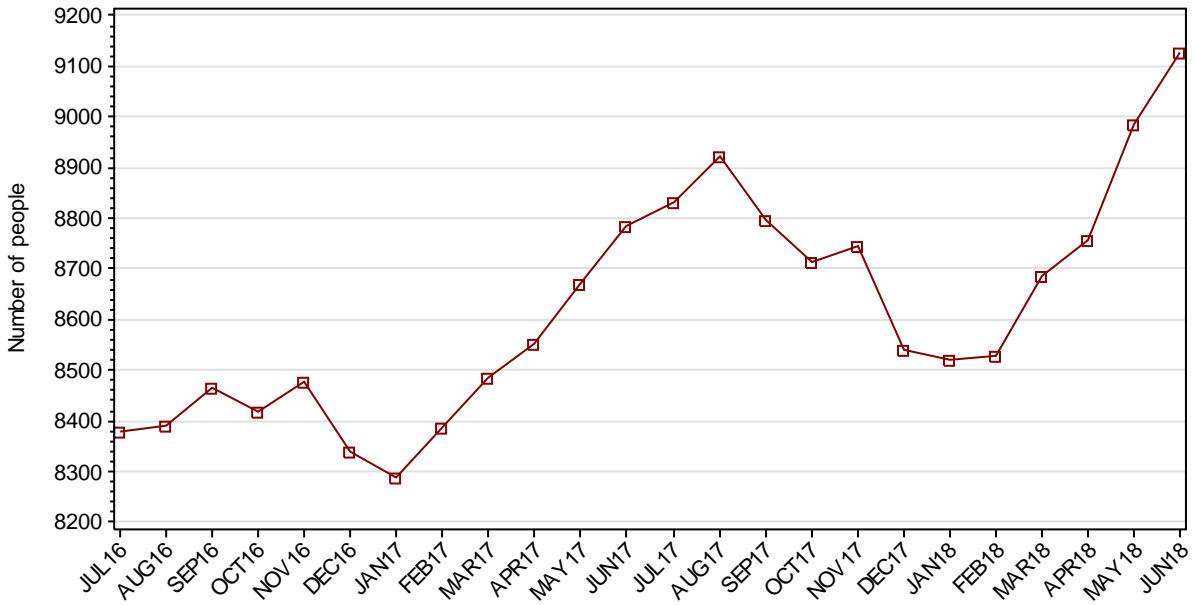
2.1.2 ADULT CUSTODY POPULATION BY INDIGENOUS STATUS



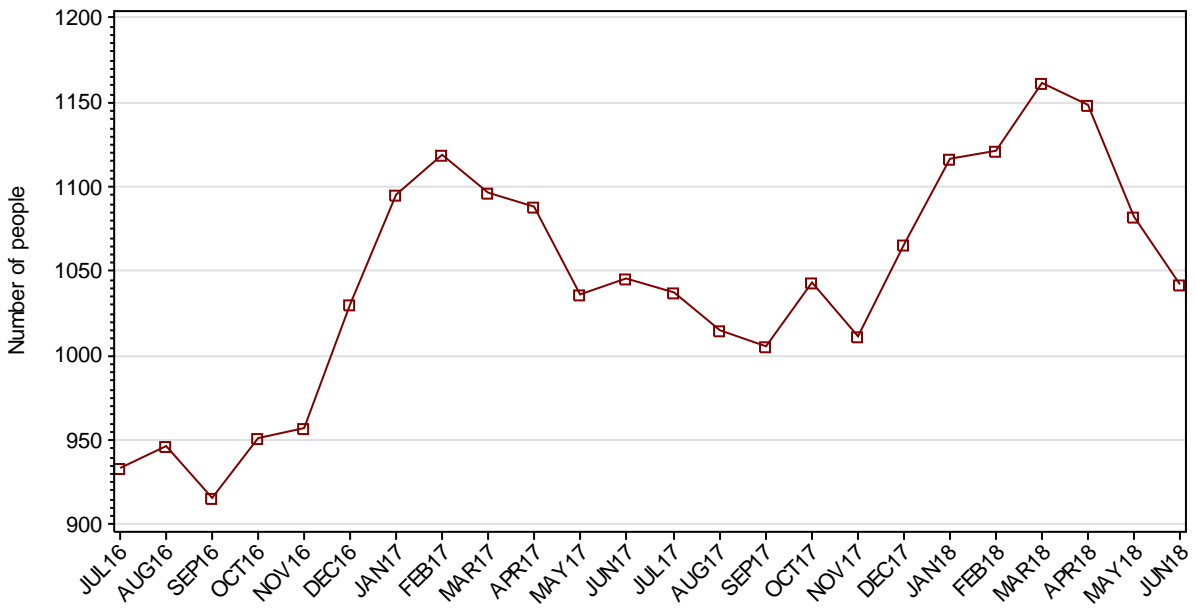
2.1.3 ADULT REMAND POPULATION



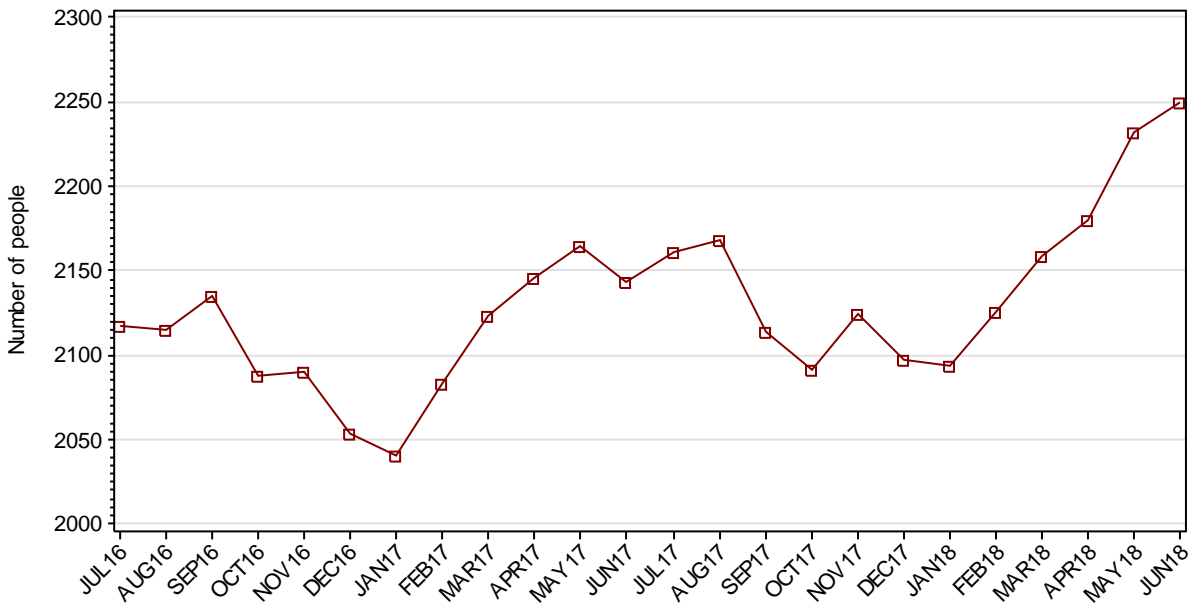
2.1.4 ADULT SENTENCED POPULATION



2.1.5 INDIGENOUS ADULT REMAND POPULATION



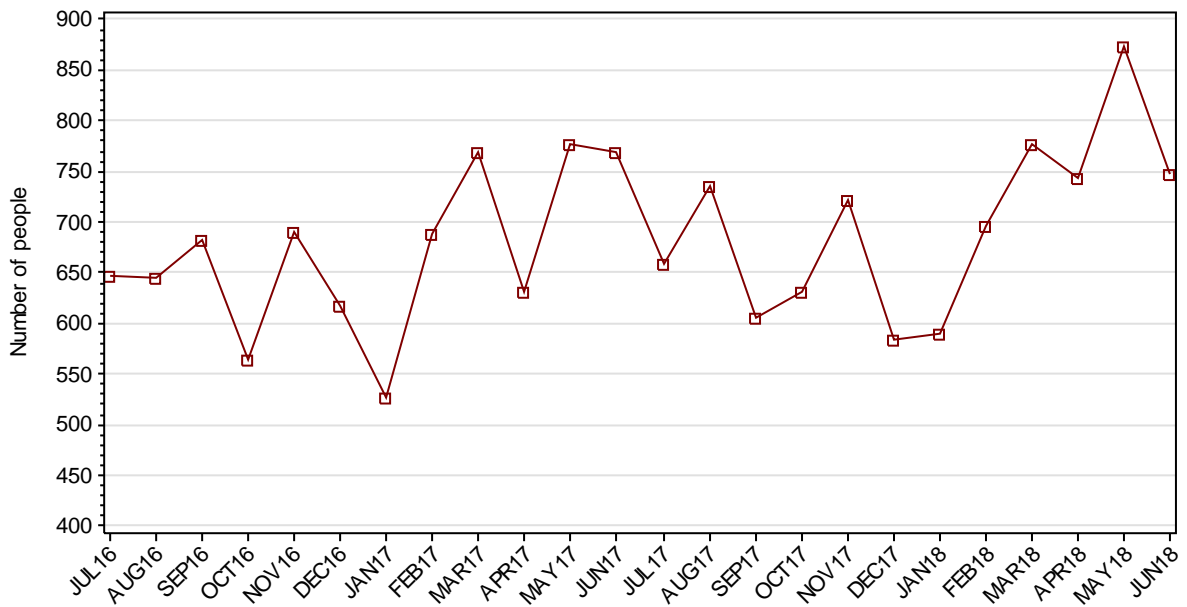
2.1.6 INDIGENOUS ADULT SENTENCED POPULATION



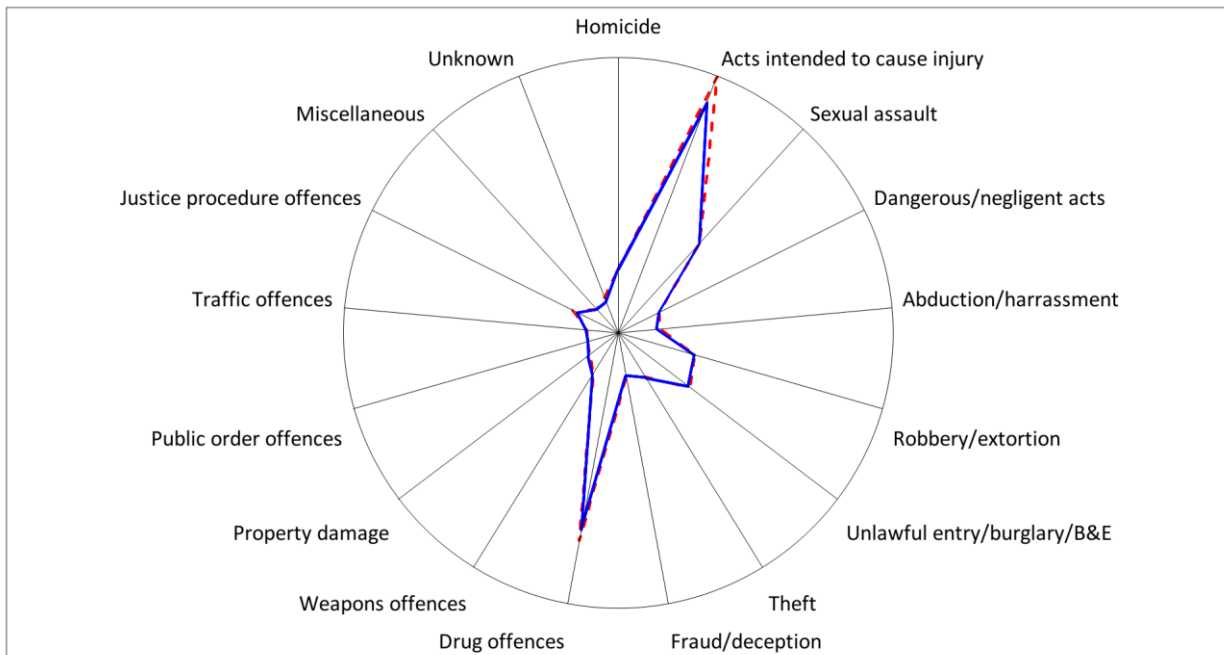
2.1.7 ADULT CUSTODY PROFILE AT END OF QUARTER

		Remand		Sentenced		Total	
		MAR18	JUN18	MAR18	JUN18	MAR18	JUN18
Total Male	Count	4361	4098	8092	8465	12453	12563
	Avg Age	35.1	35.5	37.5	37.5	36.7	36.8
Total Female	Count	446	404	595	663	1041	1067
	Avg Age	33.5	33.6	36.2	36.0	35.1	35.1
Indigenous Male	Count	1016	897	1951	2032	2967	2929
	Avg Age	32.5	32.3	33.2	33.3	33.0	33.0
Indigenous Female	Count	145	145	208	218	353	363
	Avg Age	32.8	32.3	33.4	33.4	33.1	33.0
Total	Count	4807	4502	8687	9128	13494	13630
	Avg Age	35.0	35.3	37.4	37.4	36.5	36.7

2.1.8 ADULTS IN CUSTODY: NUMBER WHOSE LEGAL STATUS CHANGED DURING MONTH FROM REMAND TO SENTENCED



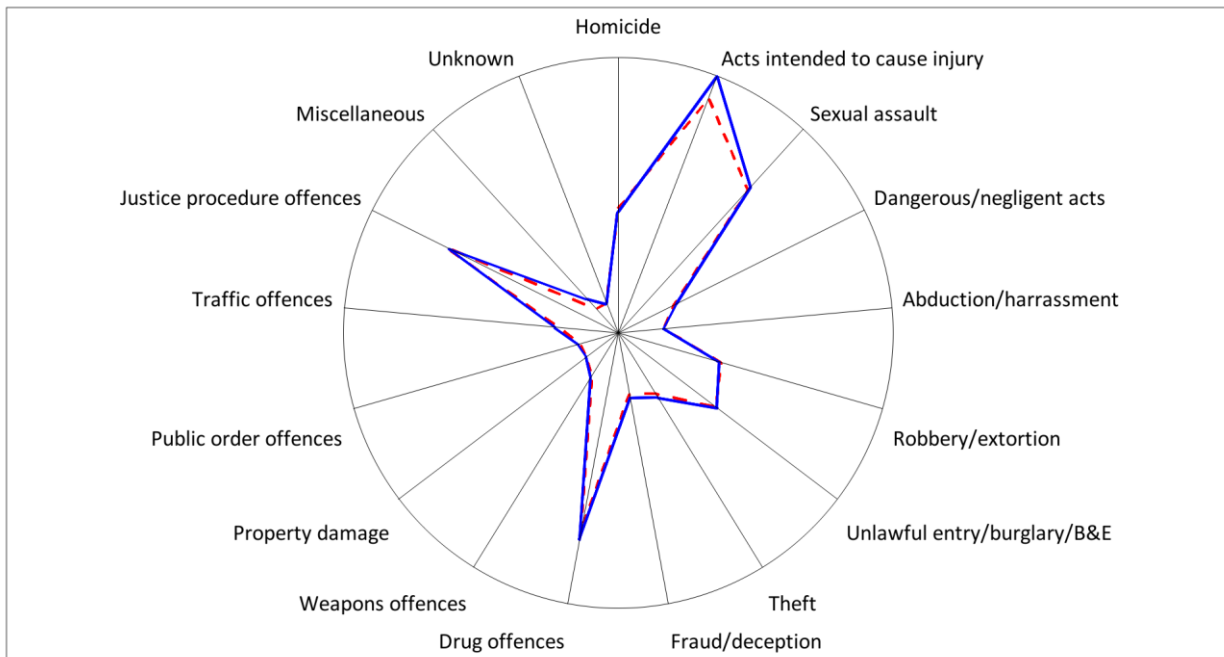
2.1.9 ADULT REMAND POPULATION BY MOST SERIOUS OFFENCE



As At: - -31MAR18 —30JUN18

	31MAR18		30JUN18	
	Number	% of Total	Number	% of Total
Homicide	210	4.4	206	4.6
Acts intended to cause injury	1450	30.2	1285	28.5
Sexual assault	548	11.4	548	12.2
Dangerous/negligent acts	107	2.2	107	2.4
Abduction/harrassment	87	1.8	67	1.5
Robbery/extortion	306	6.4	302	6.7
Unlawful entry/burglary/B&E	364	7.6	355	7.9
Theft	139	2.9	145	3.2
Fraud/deception	101	2.1	91	2.0
Drug offences	1077	22.4	1011	22.5
Weapons offences	112	2.3	124	2.8
Property damage	44	0.9	55	1.2
Public order offences	22	0.5	21	0.5
Traffic offences	20	0.4	25	0.6
Justice procedure offences	138	2.9	104	2.3
Miscellaneous	23	0.5	24	0.5
Unknown	59	1.2	32	0.7
Total	4807	100.0	4502	100.0

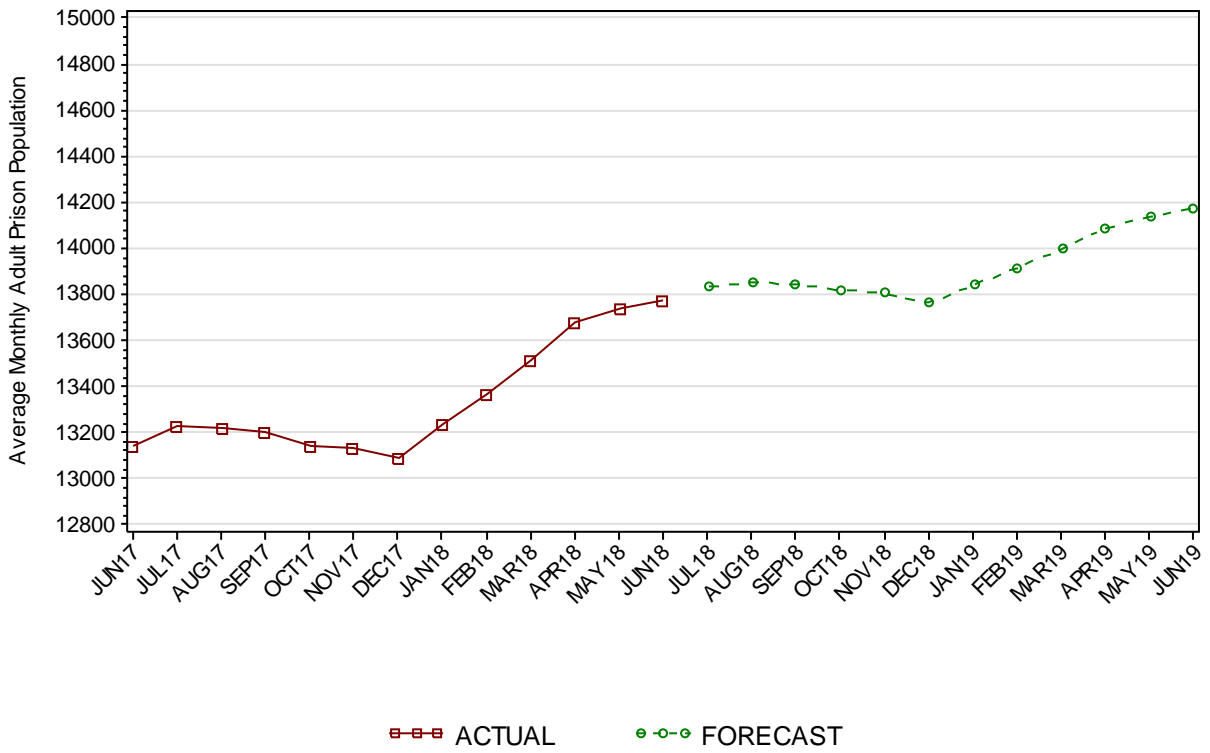
2.1.10 ADULT SENTENCED POPULATION BY MOST SERIOUS OFFENCE



As At: - - 31MAR18 — 30JUN18

	31MAR18		30JUN18	
	Number	% of Total	Number	% of Total
Homicide	695	8.0	668	7.3
Acts intended to cause injury	1617	18.6	1787	19.6
Sexual assault	1191	13.7	1222	13.4
Dangerous/negligent acts	242	2.8	266	2.9
Abduction/harrassment	122	1.4	121	1.3
Robbery/extortion	569	6.6	557	6.1
Unlawful entry/burglary/B&E	681	7.8	695	7.6
Theft	308	3.5	341	3.7
Fraud/deception	239	2.8	267	2.9
Drug offences	1253	14.4	1315	14.4
Weapons offences	152	1.7	167	1.8
Property damage	82	0.9	79	0.9
Public order offences	75	0.9	91	1.0
Traffic offences	221	2.5	250	2.7
Justice procedure offences	1190	13.7	1161	12.7
Miscellaneous	27	0.3	124	1.4
Unknown	23	0.3	17	0.2
Total	8687	100.0	9128	100.0

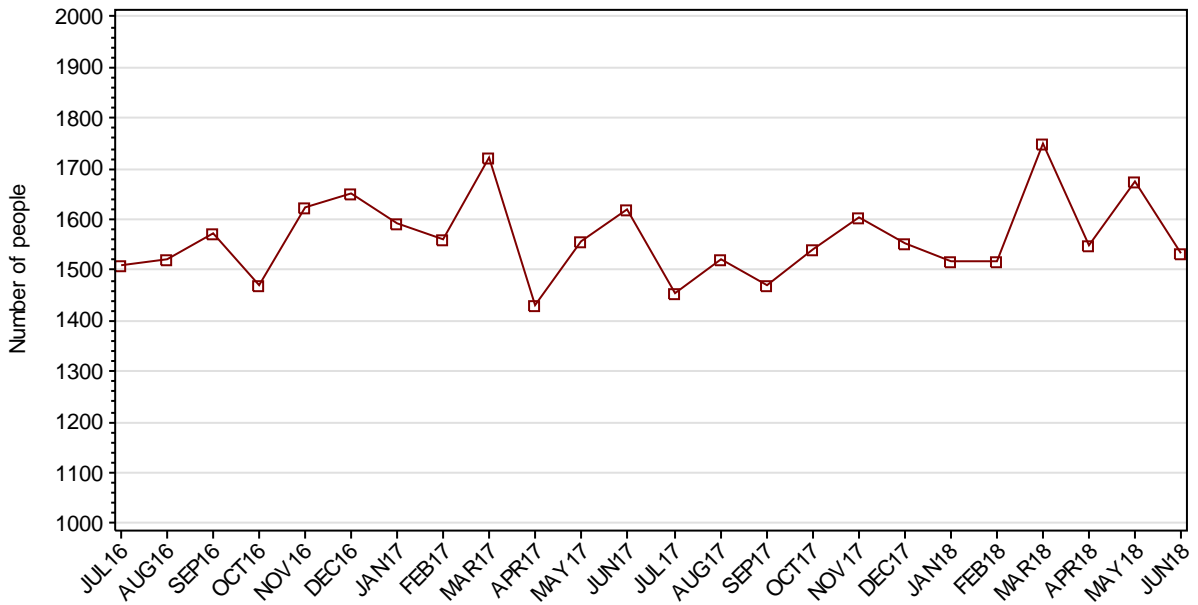
2.1.11 PRISON POPULATION* FORECAST



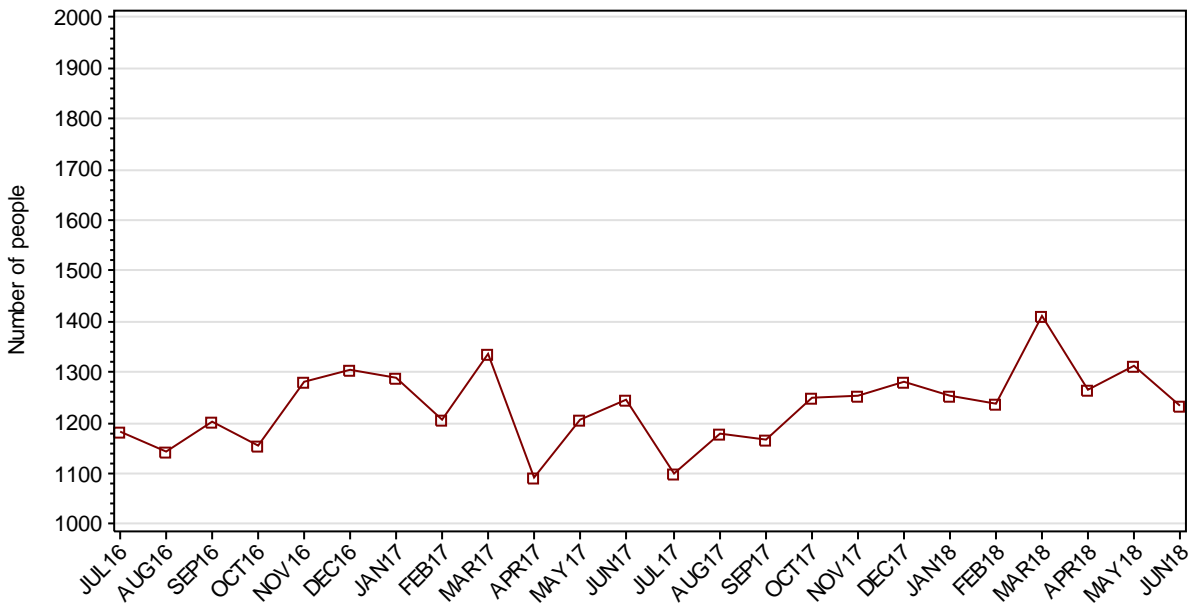
*Includes adults held in 24 hour police/court cell complexes managed by CSNSW

SECTION 2.2 ADULT CUSTODY RECEPTIONS

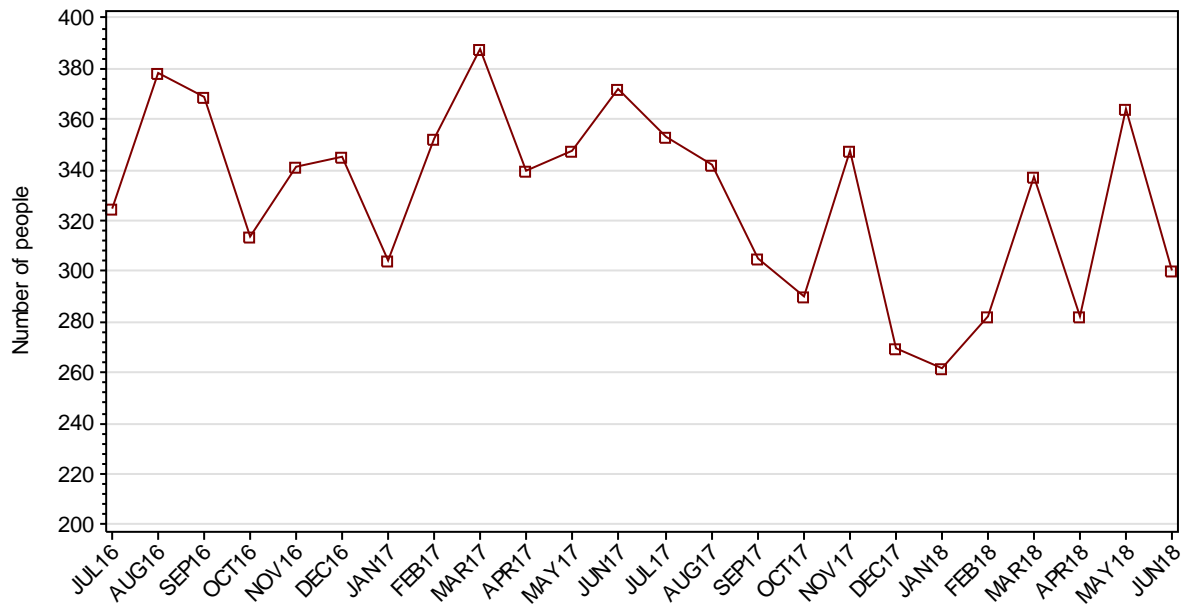
2.2.1 ADULTS RECEIVED INTO CUSTODY DURING MONTH



2.2.2 ADULT REMAND RECEPTIONS

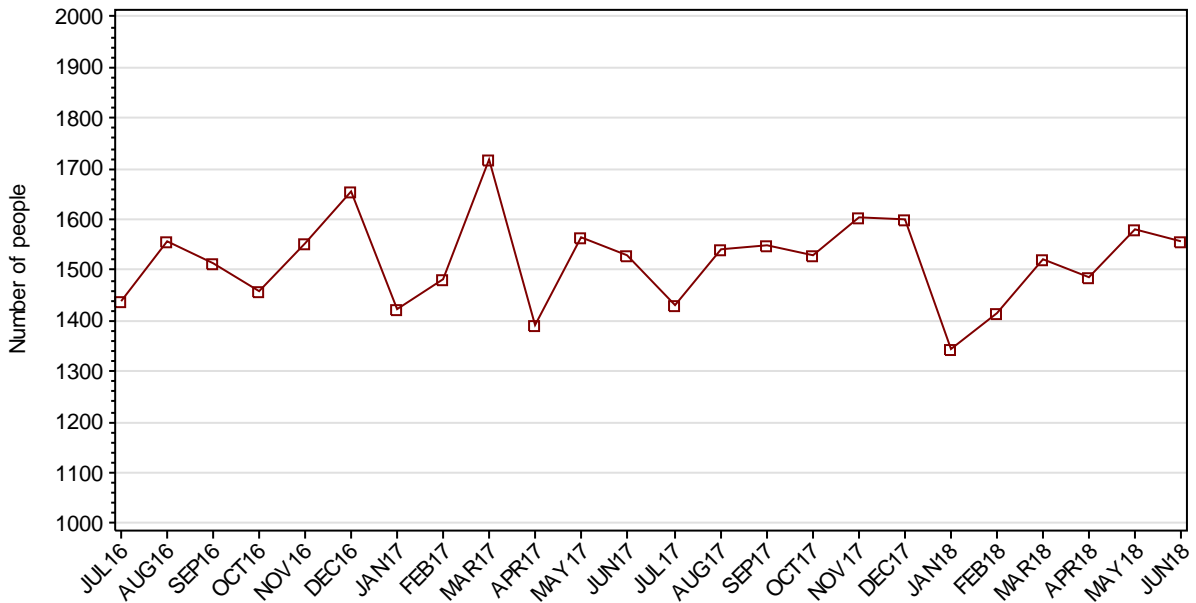


2.2.3 ADULT SENTENCED RECEPTIONS



SECTION 2.3 ADULT CUSTODY DISCHARGES

2.3.1 ADULTS DISCHARGED FROM CUSTODY DURING MONTH

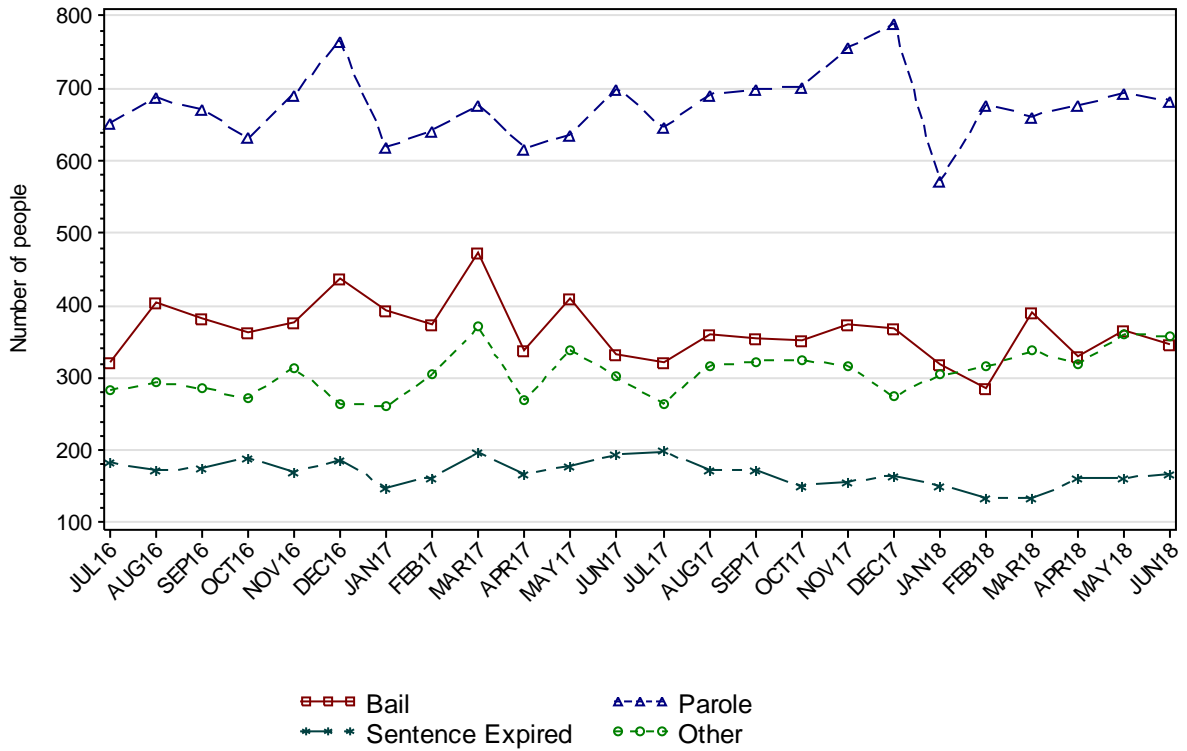


2.3.2 AVERAGE LENGTH OF STAY FOR ADULTS DISCHARGED FROM CUSTODY EACH QUARTER

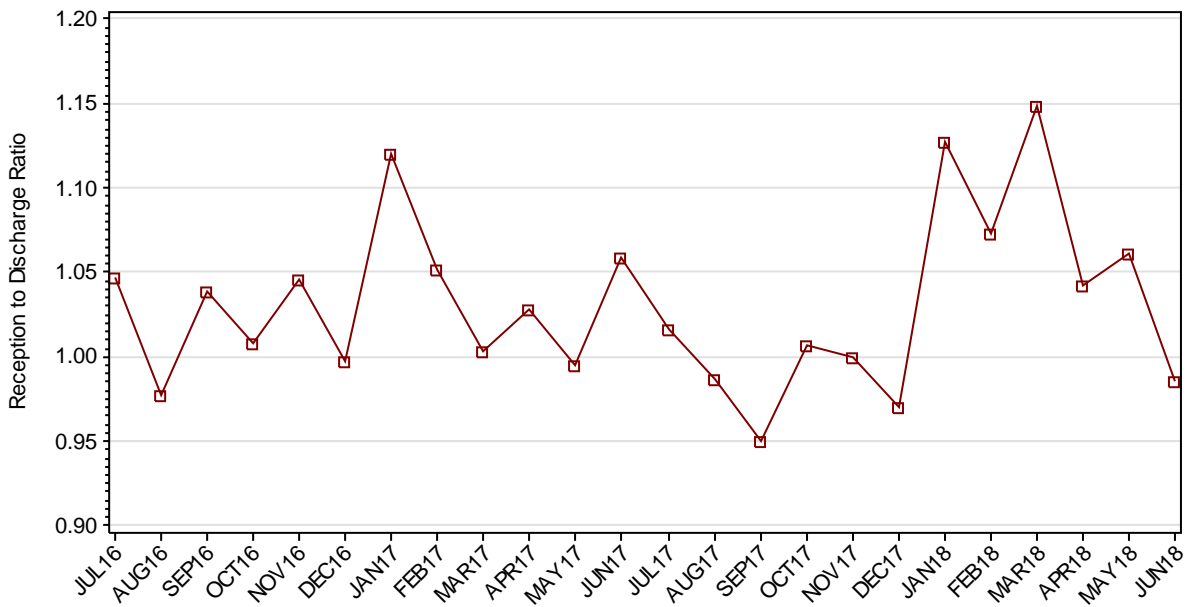
		Remand Custody Only		Sentenced Custody Only		Remand to Sentenced Custody	
		MAR18	JUN18	MAR18	JUN18	MAR18	JUN18
Total Male	Avg Days	49.3	56.7	236.2	213.3	402.4	423.6
	Number	1219	1342	829	851	1616	1776
Total Female	Avg Days	40.5	43.3	144.7	128.4	288.6	322.5
	Number	314	304	135	122	170	222
Indigenous Male	Avg Days	51.6	48.9	188.1	198.1	317.1	322.0
	Number	333	327	252	276	443	549
Indigenous Female	Avg Days	39.4	38.4	107.9	108.0	205.2	220.0
	Number	101	99	59	56	73	94
Total	Avg Days	47.5	54.3	223.4	202.7	391.6	412.4
	Number	1533	1646	964	973	1786	1998

Note: Length of Stay for Remand to Sentenced Custody is from the date of reception on remand to date of discharge after serving sentence.

2.3.3 ADULTS BY DISCHARGE TYPE



2.3.4 RATIO OF ADULT RECEPTIONS TO DISCHARGES



Part 3 DATA TABLES

Juvenile	1.In Custody										Remand to Sent
	Total	Legal Status			Indigenous			Indigenous Legal Status			
		Court Bail Ref.	Police Bail Ref.	Sent	Yes	No	Unk	Court Bail Ref.	Police Bail Ref.	Sent	
JUL16	261	130	1	130	145	114	2	64	0	81	35
AUG16	243	112	10	121	128	115	0	53	4	71	30
SEP16	254	126	4	124	126	128	0	56	0	70	27
OCT16	260	130	3	127	127	129	4	55	2	70	32
NOV16	270	134	7	129	140	129	1	64	4	72	30
DEC16	249	137	5	107	136	112	1	72	4	60	24
JAN17	278	153	3	122	156	121	1	83	2	71	30
FEB17	263	148	6	109	147	114	2	77	4	66	25
MAR17	279	157	3	119	145	130	4	75	1	69	40
APR17	299	190	7	102	158	138	3	99	2	57	19
MAY17	275	161	6	108	140	131	4	77	1	62	38
JUN17	288	156	5	127	147	137	4	76	2	69	46
JUL17	286	167	2	117	130	151	5	70	0	60	22
AUG17	270	160	2	108	124	144	2	67	2	55	25
SEP17	286	163	5	118	129	153	4	71	2	56	33
OCT17	308	172	4	132	142	161	5	81	1	60	35
NOV17	286	157	5	124	121	160	5	64	4	53	30
DEC17	268	164	3	101	115	149	4	64	2	49	13
JAN18	268	152	8	108	125	140	3	65	4	56	36
FEB18	280	176	3	101	138	136	6	90	1	47	27
MAR18	302	179	6	117	145	151	6	84	5	56	43
APR18	309	178	7	124	146	155	8	80	2	64	27
MAY18	283	155	4	124	138	138	7	71	3	64	42
JUN18	292	154	8	130	143	142	7	74	5	64	29

Juvenile	2.Receptions							3.Discharges									Ratio Rec/ Dis
	Tot	Legal Status			Indigenous			Tot	Legal Status					Indigenous			
		Court Bail Ref.	Police Bail Ref.	Sent	Yes	No	Unk		Bail	Not Proven Non-Cust.	Other	Parole	Sent Exp	Yes	No	Unk	
JUL16	228	99	124	5	107	114	7	248	181	30	1	34	2	114	129	5	0.92
AUG16	225	90	131	4	86	134	5	245	176	23	5	34	7	103	135	7	0.92
SEP16	235	99	126	10	96	136	3	224	166	27	4	27	0	98	123	3	1.05
OCT16	238	115	116	7	93	135	10	232	175	24	1	31	1	92	134	6	1.03
NOV16	274	130	132	12	135	133	6	261	195	29	2	34	1	121	131	9	1.05
DEC16	244	119	122	3	120	116	8	269	201	25	2	39	2	126	135	8	0.91
JAN17	278	133	135	10	137	138	3	248	214	13	3	17	1	116	129	3	1.12
FEB17	253	131	115	7	124	118	11	267	206	19	4	36	2	133	124	10	0.95
MAR17	297	155	135	7	145	144	8	282	229	20	1	26	6	148	128	6	1.05
APR17	259	107	145	7	120	131	8	239	181	24	3	30	1	107	123	9	1.08
MAY17	238	102	130	6	106	125	7	261	200	25	4	29	3	124	131	6	0.91
JUN17	235	118	107	10	105	126	4	223	165	29	3	25	1	98	121	4	1.05
JUL17	249	130	110	9	103	136	10	252	192	23	1	32	4	120	123	9	0.99
AUG17	230	103	122	5	107	116	7	246	169	38	5	30	4	114	122	10	0.93
SEP17	250	126	118	6	109	134	7	233	183	23	2	24	1	103	125	5	1.07
OCT17	289	124	158	7	138	142	9	269	210	31	1	26	1	126	135	8	1.07
NOV17	264	116	143	5	124	133	7	284	213	34	2	31	4	144	133	7	0.93
DEC17	304	134	160	10	144	154	6	320	250	29	3	36	2	148	165	7	0.95
JAN18	293	131	157	5	153	133	7	294	249	16	1	23	5	143	143	8	1.00
FEB18	274	125	139	10	137	126	11	261	193	30	2	30	6	124	129	8	1.05
MAR18	273	128	137	8	131	135	7	253	195	24	2	28	4	126	120	7	1.08
APR18	247	89	152	6	110	133	4	240	200	14	3	21	2	108	130	2	1.03
MAY18	242	116	123	3	118	111	13	268	195	28	6	33	6	126	128	14	0.90
JUN18	274	87	172	15	114	149	11	267	199	32	2	31	3	111	145	11	1.03

Adult	1.In Custody								Remand to Sent
	Total	Legal Status		Indigenous			Indigenous Legal Status		
		Remand	Sent	Yes	No	Unk	Remand	Sent	
JUL16	12616	4236	8380	3051	9518	47	934	2117	647
AUG16	12584	4194	8390	3062	9479	43	947	2115	644
SEP16	12641	4177	8464	3051	9546	44	916	2135	682
OCT16	12659	4240	8419	3039	9576	44	951	2088	564
NOV16	12726	4248	8478	3047	9634	45	957	2090	691
DEC16	12729	4388	8341	3084	9594	51	1030	2054	618
JAN17	12901	4614	8287	3136	9707	58	1095	2041	527
FEB17	12978	4591	8387	3202	9709	67	1119	2083	689
MAR17	12955	4469	8486	3220	9672	63	1097	2123	770
APR17	13022	4470	8552	3234	9720	68	1088	2146	631
MAY17	13018	4348	8670	3201	9751	66	1036	2165	776
JUN17	13092	4309	8783	3190	9836	66	1046	2144	770
JUL17	13120	4288	8832	3198	9857	65	1037	2161	658
AUG17	13102	4180	8922	3183	9850	69	1015	2168	736
SEP17	13017	4221	8796	3120	9808	89	1006	2114	606
OCT17	13026	4311	8715	3136	9797	93	1044	2092	631
NOV17	13031	4286	8745	3136	9775	120	1012	2124	722
DEC17	12989	4447	8542	3163	9712	114	1066	2097	584
JAN18	13164	4645	8519	3211	9831	122	1117	2094	589
FEB18	13267	4737	8530	3247	9879	141	1121	2126	697
MAR18	13494	4807	8687	3320	10015	159	1161	2159	777
APR18	13558	4803	8755	3328	10073	157	1148	2180	744
MAY18	13651	4664	8987	3315	10147	189	1083	2232	874
JUN18	13630	4502	9128	3292	10108	230	1042	2250	748

Adult	2.Receptions						3.Discharges								Ratio Rec/ Dis
	Tot	Legal Status		Indigenous			Tot	Legal Status				Indigenous			
		Remand	Sent	Yes	No	Unk		Bail	Other	Parole	Sent Exp	Yes	No	Unk	
JUL16	1508	1183	325	420	1053	35	1440	322	282	652	184	428	981	31	1.05
AUG16	1521	1143	378	459	1034	28	1557	403	294	687	173	451	1073	33	0.98
SEP16	1573	1204	369	436	1111	26	1514	382	286	671	175	450	1040	24	1.04
OCT16	1469	1155	314	426	1005	38	1458	364	272	632	190	439	982	37	1.01
NOV16	1624	1283	341	474	1118	32	1552	376	314	691	171	465	1058	29	1.05
DEC16	1651	1306	345	474	1118	59	1655	437	265	766	187	441	1153	61	1.00
JAN17	1593	1289	304	478	1068	47	1422	394	260	619	149	424	958	40	1.12
FEB17	1560	1208	352	481	1033	46	1484	374	305	642	163	416	1030	38	1.05
MAR17	1723	1335	388	487	1182	54	1718	473	370	678	197	467	1193	58	1.00
APR17	1431	1091	340	405	988	38	1392	339	268	618	167	395	965	32	1.03
MAY17	1556	1208	348	429	1094	33	1563	410	339	636	178	462	1065	36	1.00
JUN17	1618	1246	372	457	1126	35	1529	334	301	700	194	453	1041	35	1.06
JUL17	1455	1102	353	428	990	37	1432	322	265	646	199	418	978	36	1.02
AUG17	1521	1179	342	422	1053	46	1541	359	317	692	173	438	1063	40	0.99
SEP17	1472	1167	305	424	1002	46	1549	355	323	699	172	481	1042	26	0.95
OCT17	1541	1251	290	474	1009	58	1530	352	324	703	151	457	1015	58	1.01
NOV17	1603	1255	348	464	1061	78	1603	373	317	756	157	467	1085	51	1.00
DEC17	1551	1281	270	486	1015	50	1599	369	274	791	165	457	1082	60	0.97
JAN18	1517	1255	262	446	1028	43	1346	319	304	572	151	399	912	35	1.13
FEB18	1519	1237	282	447	1012	60	1415	286	316	678	135	413	962	40	1.07
MAR18	1749	1412	337	522	1157	70	1522	390	337	662	133	449	1020	53	1.15
APR18	1549	1267	282	466	1016	67	1487	329	320	677	161	460	961	66	1.04
MAY18	1677	1313	364	472	1118	87	1581	366	360	693	162	480	1045	56	1.06
JUN18	1532	1232	300	437	1000	95	1555	346	358	684	167	461	1034	60	0.99

Part 4 GLOSSARY

Adult

A person held in custody in a gazetted correctional centre managed by Corrective Services NSW (CSNSW). Persons may have been remanded in custody after being refused bail or sentenced to a custodial order for a proven offence.

The adult figures in this report include the small number of 16 and 17 year old males held in the Kariong Juvenile Correctional Centre.

ANZSOC

The Australian Bureau of Statistics Australian and New Zealand Standard Offence Classification (ANZSOC) groups criminal offences into 16 broad divisions:

1. Homicide and related offences
2. Acts intended to cause injury
3. Sexual assault and related offences
4. Dangerous or negligent acts endangering persons
5. Abduction, harassment and other offences against the person
6. Robbery, extortion and related offences
7. Unlawful entry with intent/burglary, break and enter
8. Theft and related offences
9. Fraud, deception and related offences
10. Illicit drug offences
11. Prohibited and regulated weapons and explosives offences
12. Property damage and environmental pollution
13. Public order offences
14. Traffic and vehicle regulatory offences
15. Offences against justice procedures, government security and government operations
16. Miscellaneous offences

For further information see:

<http://www.abs.gov.au/AUSSTATS/abs@.nsf/DetailsPage/1234.02011>

Note that shortened titles are used in this report.

Average length of stay

The length of stay is the duration of the custodial episode, from the date of reception to the date of discharge.

The average length of stay (in days) is presented for three types of custodial episodes:

Remand custody only - the person entered custody after being refused bail and was then discharged from custody without having been sentenced. Most commonly discharged after being granted bail, other reasons include criminal charges not proven, receiving a non-custodial penalty for a proven offence or being transferred interstate or from a juvenile to an adult prison or vice versa.

Sentenced custody only - persons who entered custody only after being sentenced to a custodial penalty by a court. These persons had either been granted bail, or bail had been dispensed with, pending finalisation of their charges.

Remand to sentenced custody - persons who had been remanded in custody prior to having a custodial sentence imposed by a court. The length of stay for these people is the entire time from reception on remand to discharge after serving the custodial sentence.

Note: Persons initially remanded in custody but then granted bail prior to having a custodial penalty imposed by a court are counted as two custodial episodes: one of remand custody only and one of sentenced custody only.

Bail

Under the provisions of the *Bail Act 2013*, police and courts may grant or refuse to grant bail to alleged offenders. The grant of bail takes into consideration the alleged offence and offender. Bail is granted at the offence level and so a person may be granted bail for one offence and refused bail for another offence.

Persons refused bail (and small numbers granted bail but unable to meet the bail conditions set by a court) are remanded into custody pending further court action.

Juvenile custody population data in this report disaggregates persons remanded into custody into those refused police bail and refused court bail. This is because all juveniles refused police bail are held in Juvenile Justice centres whereas not all adults refused police bail are held in gazetted correctional centres or 24 hour police cell complexes.

Control order

See Custodial sentence

Corrective Services NSW

Corrective Services NSW (CSNSW) is part of the Department of Justice with responsibilities including the supervision of people remanded in custody pending the finalisation of criminal charges and offenders sentenced to a custodial order.

See <http://www.correctiveservices.nsw.gov.au/> for further information.

The Corrections Research, Evaluation and Statistics (CRES) section of CSNSW have provided the adult custody data for this report and advised on its interpretation.

Court bail refused

See Bail

Custodial episode

A custodial episode is the time between the reception into and discharge from custody. An individual may have multiple custodial episodes within the reporting period. A change in legal status between the reception and discharge date, for example changing from being bail refused to being sentenced to a custodial order, does not count as a new custodial episode.

Custodial sentence

Courts may impose a custodial sentence for a proven offence. For adults this is a term of imprisonment under the *Crimes (Sentencing Procedure) Act 1999*. For young people this is a control order of up to two years duration or a term of imprisonment to be served partly or wholly as a juvenile under the *Children (Criminal Proceedings) Act 1987*. A person may be given custodial sentences for multiple proven offences.

While the majority of persons held under sentence in a correctional centre are sentenced under the *Crimes (Sentencing Procedure) Act 1999*, offenders whose parole has been revoked by the State Parole Authority, persons sentenced under the *Commonwealth Crimes Act 1914*, those sentenced under the *Mental Health (Forensic Provision) Act 1990*, small numbers of persons held under immigration orders awaiting deportation following expiry of their sentence and persons sentenced under legislation in other states or territories are also managed by CSNSW.

Custody population

Persons held in custody in a JJNSW juvenile justice centre or a CSNSW gazetted correctional centre, whether remanded or sentenced. Custody population figures are counted as at midnight on the last day of the month or quarter as appropriate. Persons held in a CSNSW managed police/court cell complex at midnight on the last day of the month but later transferred to a gazetted correctional centre are included in custody population figures for that month.

Discharge type

The type of reason why persons were discharged from custody:

Bail - courts granted the person bail pending the finalisation of their criminal charge(s).

Parole - the person was released to parole after serving the non-parole period of custodial sentence(s).

Sentence expired - the person was released after serving the entire period of all custodial sentence(s) imposed. This includes some persons who served both the non-parole and parole components of their sentence(s) in custody.

Not proven / non-custodial penalty - juvenile data only - the person was released after criminal charges were not proven or after the court imposed a non-custodial penalty for a proven offence, e.g. good behaviour bond.

Other - includes persons transferred to the NSW Drug Court, interstate or from a juvenile to an adult prison or vice versa and deceased persons. Includes adults released after criminal charges were not proven, after the court imposed a non-custodial penalty for a proven offence and where the specific nature of the court's final non-custodial disposal is unknown.

Discharges

Persons legally discharged from JJNSW or CSNSW custody in accordance with a court order (including any State Parole Authority order). For example - to parole, on expiry of a sentence or having been granted bail. Note that persons whose legal status changed from remand to sentenced or the reverse are not counted as discharges as they have not been discharged from custody.

Forecast

The adult prison population forecast is generated using an autoregressive integrated moving average (ARIMA) model. The model is estimated following the Box-Jenkins approach. The forecast is calculated from the average monthly prison population data from January 2011 to the current month. Please note that this forecast includes adults held in 24 hour police/court cell complexes.

The juvenile custody population forecast is generated using an exponential smoothing model. The model is estimated using a Holt-Winters additive method. The forecast is

calculated from the average monthly juvenile custody population from January 2011 to the current month.

Imprisonment

See Custodial sentence

Indigenous status

Indigenous status as self-reported on reception into custody. Persons may identify as being Aboriginal or Torres Strait Islander, neither Aboriginal nor Torres Strait Islander or may not provide this information. An inmate is recorded as indigenous if they have identified as such in the current or any previous custodial episode. Indigenous status is unknown for a small proportion of people.

Juvenile

A person held in custody in a juvenile justice centre. These centres are managed by Juvenile Justice NSW (JJNSW). A young person in juvenile custody may have been refused bail by police, refused bail by the court or sentenced to a custodial sentence.

All young persons refused bail by police must be taken to a juvenile justice centre to be held in custody pending their court appearance. Young persons refused police bail cannot be held in a police or court cell.

Note: a small number of 16 and 17 year old males are held in Kariiong Juvenile Correctional Centre which is managed by CSNSW. As Kariiong is a gazetted correctional centre, these young persons are counted in the adult figures in this report.

Juvenile Justice NSW

Juvenile Justice NSW (JJNSW) is part of the Department of Justice with responsibilities including the supervision of young people remanded in custody pending the finalisation of criminal charges and young offenders sentenced to a control order/imprisonment.

See <http://www.djj.nsw.gov.au/> for further information.

The Research and Information Section of JJNSW have provided the juvenile data for this report and advised on its interpretation.

Legal status

The legal status of persons received into or held in custody:

Remand (Juvenile) - Juveniles refused bail (and small numbers granted bail but unable to meet conditions) are remanded into custody pending future court action.

Juvenile remand figures are disaggregated into:

- Police bail refused - Police have refused to grant bail to a juvenile. All juveniles refused bail by police are held in custody in a juvenile justice centre pending future court action.
- Court bail refused - the courts have refused to grant bail to a juvenile pending future court action.

Remand (Adult) - adults refused bail (and small numbers granted bail but unable to meet conditions) are remanded in custody pending future court action. Includes a small number of persons refused police bail and remanded in custody in a gazetted correctional centre. Includes persons on remand who are being managed as correctional patients under the *Mental Health (Forensic Provisions) Act 1990*.

Sentenced - the courts have imposed custodial sentence(s) for proven offence(s). This category includes persons returned to custody after breaching parole. Includes forensic patients as per the *Mental Health (Forensic Provisions) Act 1990* (ie persons found unfit to be tried and persons found not guilty due to mental illness). Persons on remand for one or more offences and sentenced for one or more offences have a legal status of sentenced.

Unknown - adults whose legal status was not recorded at the time of admission.

Legal status changed from remand to sentenced

Persons whose legal status changed from remand to sentenced upon the imposition of a custodial sentence by a court. This report shows the numbers of persons during each month who changed from being on remand to being sentenced.

Most serious offence

The most serious offence type for which each person is in custody. The offence type categories in this report are the sixteen ANZSOC Divisions, with shortened titles (See ANZSOC).

Most serious offence data is presented in a radar chart and a data table. The radar chart consists of a circle with a series of 'spokes' running from the centre of the circle to the perimeter. Each spoke represents a different offence type. The radar chart is constructed by placing a point on each spoke marking the proportion of prisoners with that offence type as their most serious offence. The higher the proportion, the closer the point to the perimeter. The points are then connected and the resulting figure inside the circle gives a picture of the distribution of most serious offence type across prisoners. A different type/colour of line is used for each quarter, making changes from quarter to quarter apparent. Note that offence types with no observations are plotted a short distance from the zero radius so that the numbers for every offence type can be observed.

The data table displays the number and proportion of persons in custody for each of the most serious offence types. The data is presented separately for sentenced persons and persons on remand:

Most Serious Offence – Adults:

The most serious offence for adults is as provided by CSNSW.

A person's most serious offence may change over the course of their custodial episode depending on offences for which they are in custody at any one time. The Most Serious Offence data presented in this report are stock data and are sourced from data extracts run two to three weeks after the end of the quarter.

The data for the previous quarter is as at the previous quarter's custody report.

Extracting the data after the same time lag each quarter reduces variability due to extract timing and so is indicative of a change in the broad offence profile of persons in custody between the end of the current and previous quarters.

Due to the way that MSO is recorded and the data extracted, it is not available for receptions or discharge data.

Most Serious Offence – Juveniles:

Most serious offence for juveniles is compiled by matching custody order records from JJNSW with sentencing and bail refused orders sourced from the JusticeLink system used by the NSW criminal courts. Data is matched using JusticeLink Proceeding Number, a unique offence identifier which is available in the JJNSW data from January 2011.

- The most serious offence for juveniles remanded in custody is the offence with the highest Median Sentence Ranking (MSR). The MSR is a ranking of ANZSOC codes and was developed by BOCSAR using data on sentences imposed in the NSW criminal courts. The MSR can be used to select the most serious offence when sentencing data is not available and to select most serious offence when multiple offences have the same custodial order duration. For further information see the BOCSAR's Crime and Justice Bulletin No.142 "Measuring Offence Seriousness": [www.bocsar.nsw.gov.au/lawlink/bocsar/ll_bocsar.nsf/vwFiles/CJB142.pdf/\\$file/CJB142.pdf](http://www.bocsar.nsw.gov.au/lawlink/bocsar/ll_bocsar.nsf/vwFiles/CJB142.pdf/$file/CJB142.pdf)
- The most serious offence for sentenced juveniles is the offence with the longest custodial order. For juveniles with more than one offence type with the same custodial order duration, the offence with the highest Median Sentence Ranking is selected as the most serious offence.
- Juveniles sentenced to a custodial order after breaching a non-custodial penalty (eg a suspended sentence, Community Service Order or good behaviour bond) have a most serious offence type of *Justice procedure offence* rather than the type of offence for which the non-custodial penalty was originally imposed (eg robbery/extortion, drug offences).

Note: this differs from the definition of most serious offence used in the Australian Bureau of Statistics Prisoners in Australia publication series (*ABS cat.no.4517.0*)

Police bail refused

See Bail.

Receptions

Persons received into Juvenile Justice custody or a gazetted correctional centre. Gazetted correctional centres are managed by CSNSW. Persons received into CSNSW custody and managed only in CSNSW 24-hour police/court cell complexes are excluded.

Ratio of receptions to discharges

The ratio of receptions to discharges. A ratio greater than 1 means there were more receptions than discharges during the month; a ratio less than 1 means there were more discharges than receptions during the month.

Remand

See Legal status.

Sentenced

See Legal status.

24 hour police/court cell complexes

In addition to gazetted correctional centres, CSNSW manage a number of police/court cell complexes. This report (with the exception of the adult prison forecast) excludes persons received and then discharged from a CSNSW-managed 24 hour police/court cell complex without entering a gazetted correctional centre.