
NSW SOUTH WALES CUSTODY STATISTICS

QUARTERLY UPDATE
DECEMBER 2013



NSW Bureau of Crime
Statistics and Research

CONTENTS

This report presents 24 months of reception, discharge and custody population data and comparisons between the current and previous quarter for age, gender, indigenous status, most serious offence and the average length of stay.

Separate figures are presented for juveniles and adults.

The counting unit is a custodial episode. An individual will be counted multiple times in a period if they have multiple custodial episodes in that period.

SCOPE

The data in this report are extracted from the Corrective Services NSW (CSNSW) Offender Information Management System (OIMS) and the Juvenile Justice NSW (JJNSW) Client Information Management System (CIMS).

The adult custody population figures include only those persons held in gazetted correctional centres managed by CSNSW. This includes: persons managed as forensic patients, persons held after expiry of their sentence awaiting deportation and persons awaiting extradition to another jurisdiction. Persons in the Special Purpose Centre at Long Bay Correctional Centre are not included.

In addition to gazetted correctional centres, CSNSW manages a number of police/court cell complexes. This report excludes persons received into and then discharged from a CSNSW-managed 24 hour police/court cell complex without entering a gazetted correctional centre. Adults refused police bail but not held in a gazetted correctional centre are not included.

Custody population figures are counted as at midnight on the last day of the month or quarter as appropriate. Reception and discharge figures are those during each month or quarter as appropriate.

Refer to the Glossary at the back of the report for detailed descriptions of the terms used in the report.

ACKNOWLEDGEMENTS

Juvenile custody data are provided by the Research and Information Section of JJNSW. Adult custody data are provided by the Corporate Research, Evaluation and Statistics (CRES) section of CSNSW. The Bureau is grateful for the support provided by both areas in supplying the data for this report and advising on its interpretation.

NOTE

The adult custody data presented in this report will differ from data reported by CSNSW due to data extract timing differences.

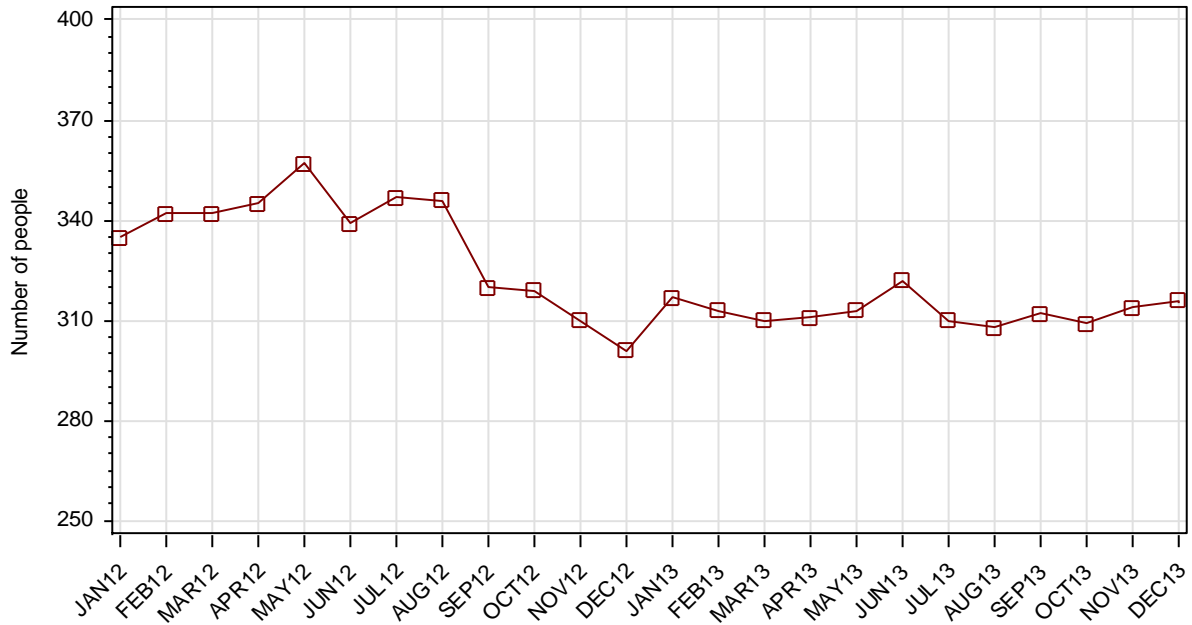
Contents

PART 1 JUVENILES	3
SECTION 1.1 JUVENILE CUSTODY POPULATION	4
1.1.1 By Month	4
1.1.2 By Legal Status	4
1.1.3 By Indigenous Status.....	5
1.1.4 By Legal Status (Indigenous Only).....	5
1.1.5 Profile	6
1.1.6 Legal Status Changed from Remand to Sentenced	6
1.1.7 Remand Population by Most Serious Offence	7
1.1.8 Sentenced Population by Most Serious Offence.....	8
SECTION 1.2 JUVENILE CUSTODY RECEPTIONS	9
1.2.1 By Month	9
1.2.2 By Legal Status	9
SECTION 1.3 JUVENILE CUSTODY DISCHARGES	10
1.3.1 By Month	10
1.3.2 Length of Stay	10
1.3.3 By Discharge Type	11
1.3.4 By Discharge Type (Excluding Bail).....	11
1.3.5 Ratio Of Receptions To Discharges.....	12
PART 2 ADULTS	13
SECTION 2.1 ADULT CUSTODY POPULATION	14
2.1.1 By Month	14
2.1.2 By Indigenous Status.....	14
2.1.3 Remand Population	15
2.1.4 Sentenced Population.....	15
2.1.5 Indigenous Remand Population	16
2.1.6 Indigenous Sentenced Population	16
2.1.7 Profile	17
2.1.8 Legal Status Changed from Remand to Sentenced	17
2.1.9 Remand Population by Most Serious Offence	18
2.1.10 Sentenced Population by Most Serious Offence.....	19
SECTION 2.2 ADULT CUSTODY RECEPTIONS	20
2.2.1 By Month	20
2.2.2 Remand Receptions	21
2.2.3 Sentenced Receptions.....	21
SECTION 2.3 ADULT CUSTODY DISCHARGES	22
2.3.1 By Month	22
2.3.2 Length of Stay	22
2.3.3 By Discharge Type	23
2.3.4 Ratio Of Receptions To Discharges.....	23
PART 3 DATA TABLES	24
PART 4 GLOSSARY	29

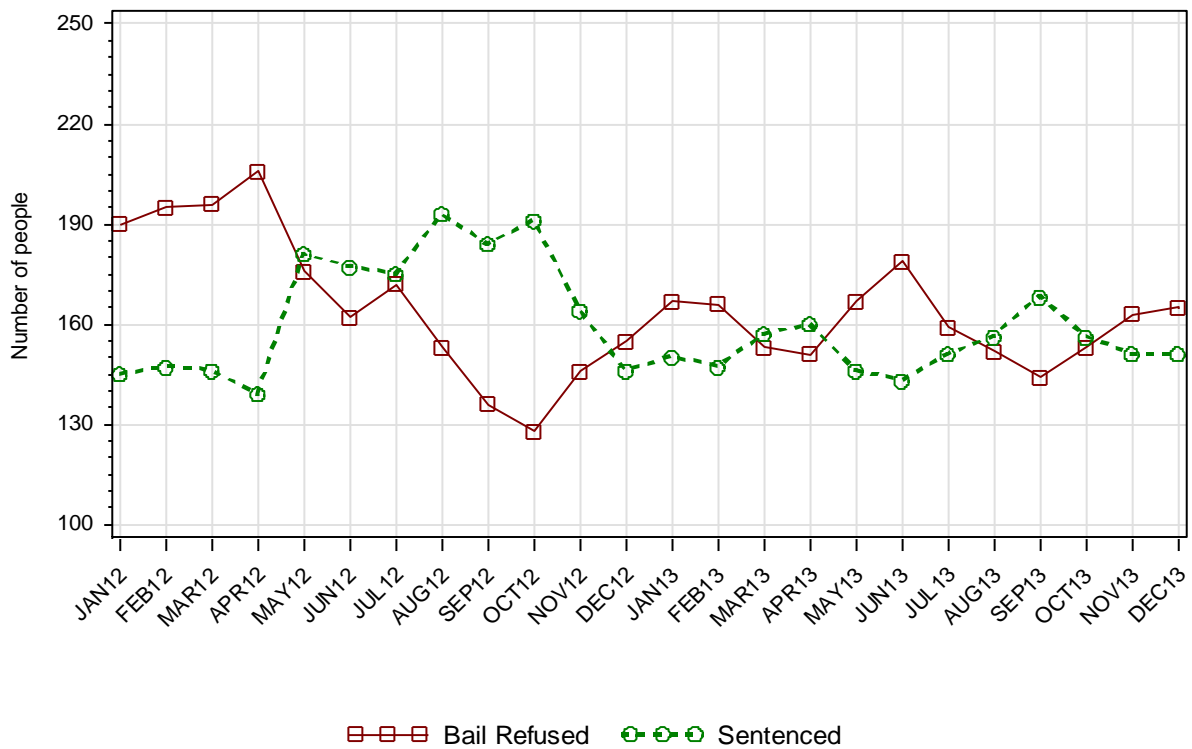
Part 1 JUVENILES

SECTION 1.1 JUVENILE CUSTODY POPULATION

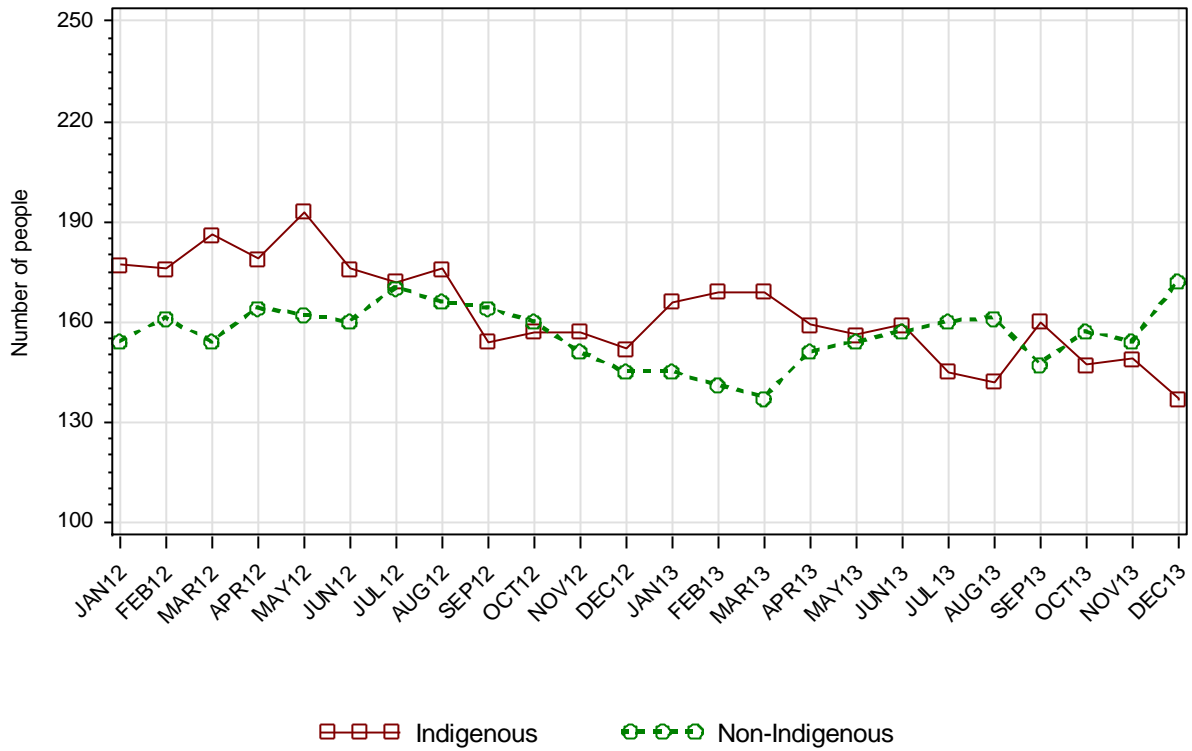
1.1.1 JUVENILE CUSTODY POPULATION AT END OF MONTH



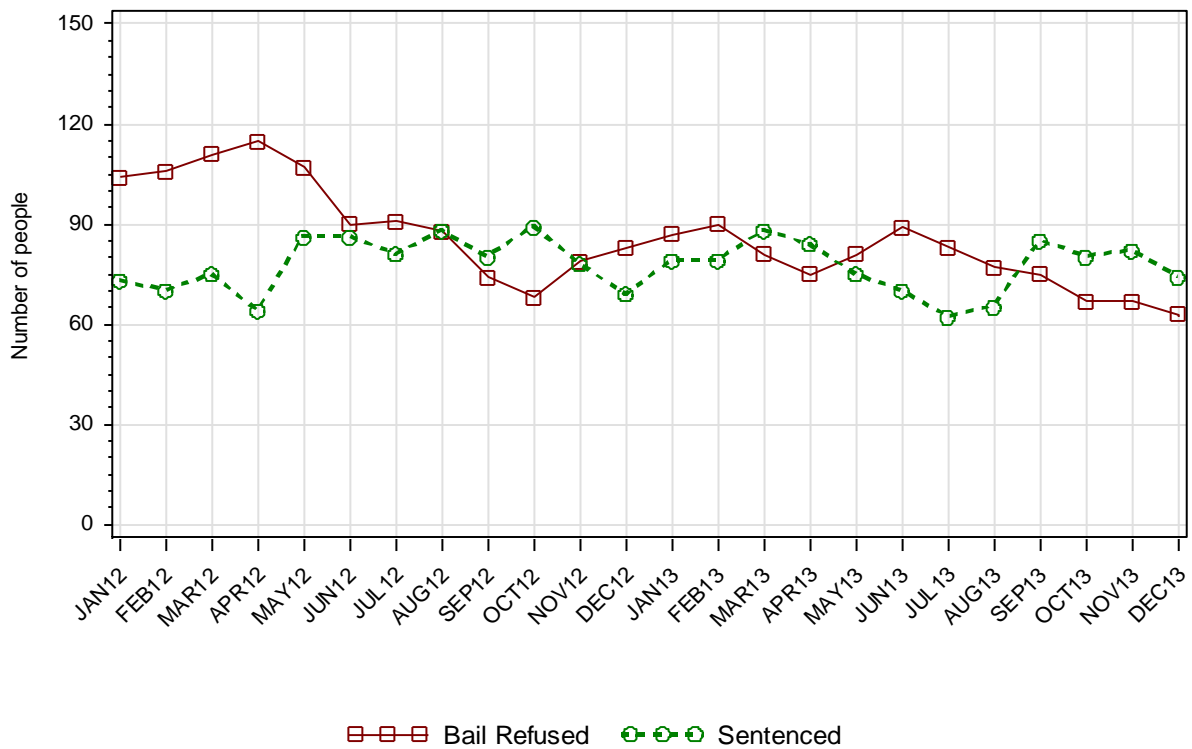
1.1.2 JUVENILE CUSTODY POPULATION BY LEGAL STATUS



1.1.3 JUVENILE CUSTODY POPULATION BY INDIGENOUS STATUS



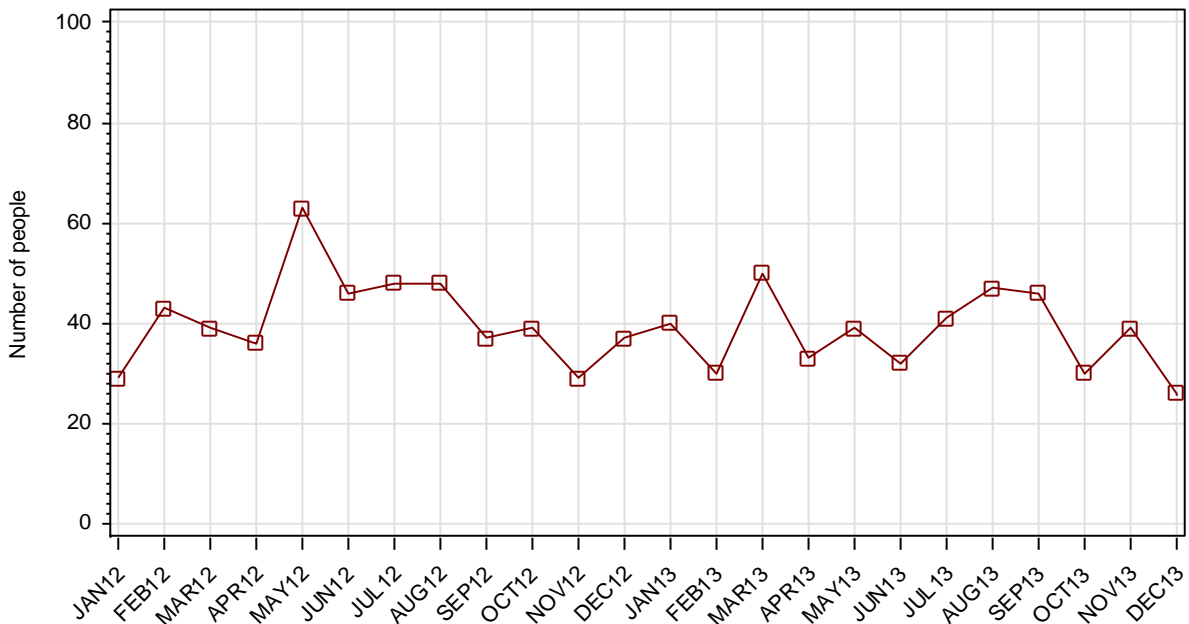
1.1.4 INDIGENOUS JUVENILE CUSTODY POPULATION BY LEGAL STATUS



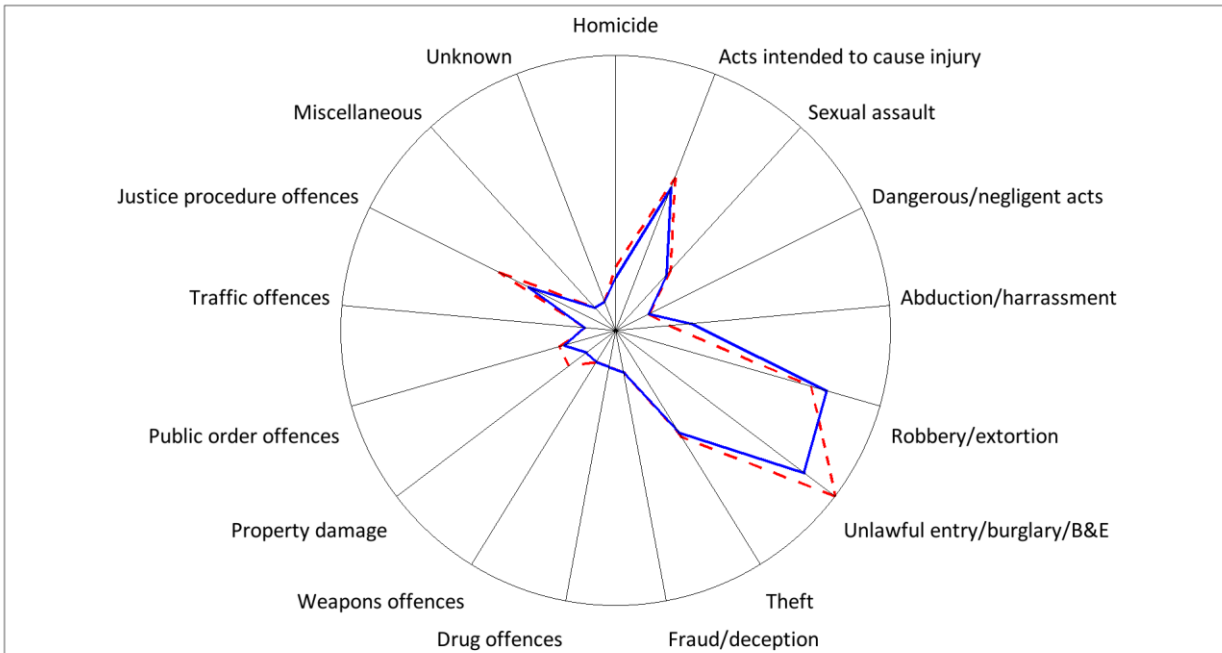
1.1.5 JUVENILE CUSTODY PROFILE AT END OF QUARTER

		Police Bail Refused		Court Bail Refused		Sentenced		Total	
		SEP13	DEC13	SEP13	DEC13	SEP13	DEC13	SEP13	DEC13
Total Male	Count	3	7	129	142	155	140	287	289
	Avg Age	16.7	15.1	16.0	16.2	16.9	16.8	16.5	16.4
Total Female	Count	--	1	12	15	13	11	25	27
	Avg Age	--	16.0	15.7	15.6	17.3	16.8	16.5	16.1
Indigenous Male	Count	1	2	66	56	80	69	147	127
	Avg Age	16.0	15.0	15.8	15.7	16.7	16.4	16.3	16.1
Indigenous Female	Count	--	--	8	5	5	5	13	10
	Avg Age	--	--	16.0	15.2	16.8	17.0	16.3	16.1
Total	Count	3	8	141	157	168	151	312	316
	Avg Age	16.7	15.3	16.0	16.1	16.9	16.8	16.5	16.4

1.1.6 JUVENILES IN CUSTODY: NUMBER WHOSE LEGAL STATUS CHANGED DURING MONTH FROM REMAND TO SENTENCED



1.1.8 JUVENILE SENTENCED POPULATION BY MOST SERIOUS OFFENCE

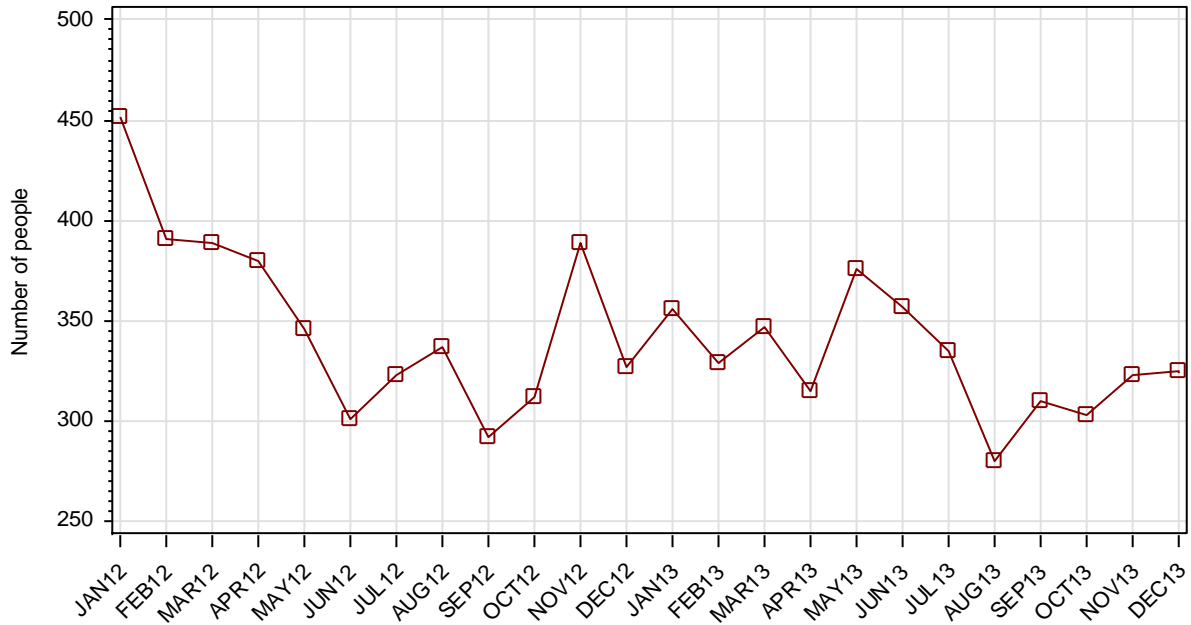


As At: - - 30SEP13 — 31DEC13

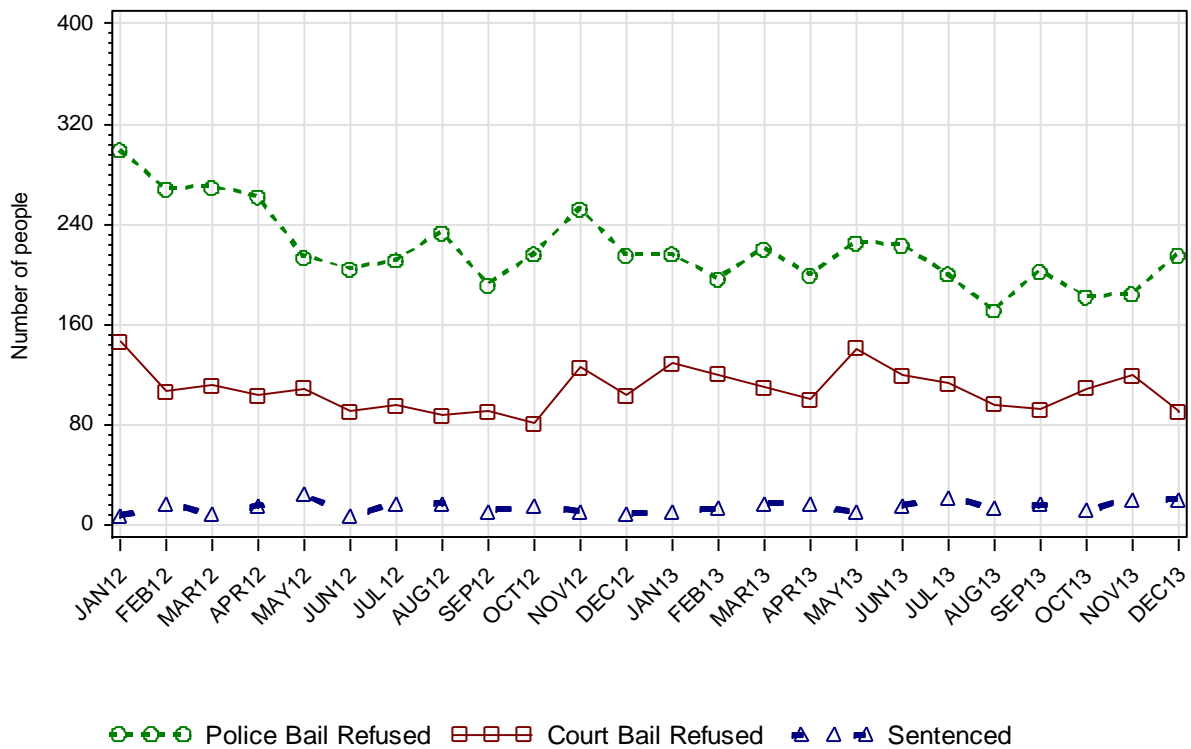
	30SEP13		31DEC13	
	Number	% of Total	Number	% of Total
Homicide	6	3.6	4	2.6
Acts intended to cause injury	24	14.3	22	14.6
Sexual assault	9	5.4	8	5.3
Dangerous/negligent acts	1	0.6	1	0.7
Abduction/harrassment	4	2.4	8	5.3
Robbery/extortion	31	18.5	34	22.5
Unlawful entry/burglary/B&E	44	26.2	37	24.5
Theft	17	10.1	16	10.6
Fraud/deception	2	1.2	2	1.3
Drug offences	1	0.6	1	0.7
Weapons offences	1	0.6	1	0.7
Property damage	5	3.0	1	0.7
Public order offences	5	3.0	4	2.6
Traffic offences	0	0.0	0	0.0
Justice procedure offences	18	10.7	12	7.9
Miscellaneous	0	0.0	0	0.0
Unknown	0	0.0	0	0.0
Total	168	100.0	151	100.0

SECTION 1.2 JUVENILE CUSTODY RECEPTIONS

1.2.1 JUVENILES RECEIVED INTO CUSTODY DURING MONTH

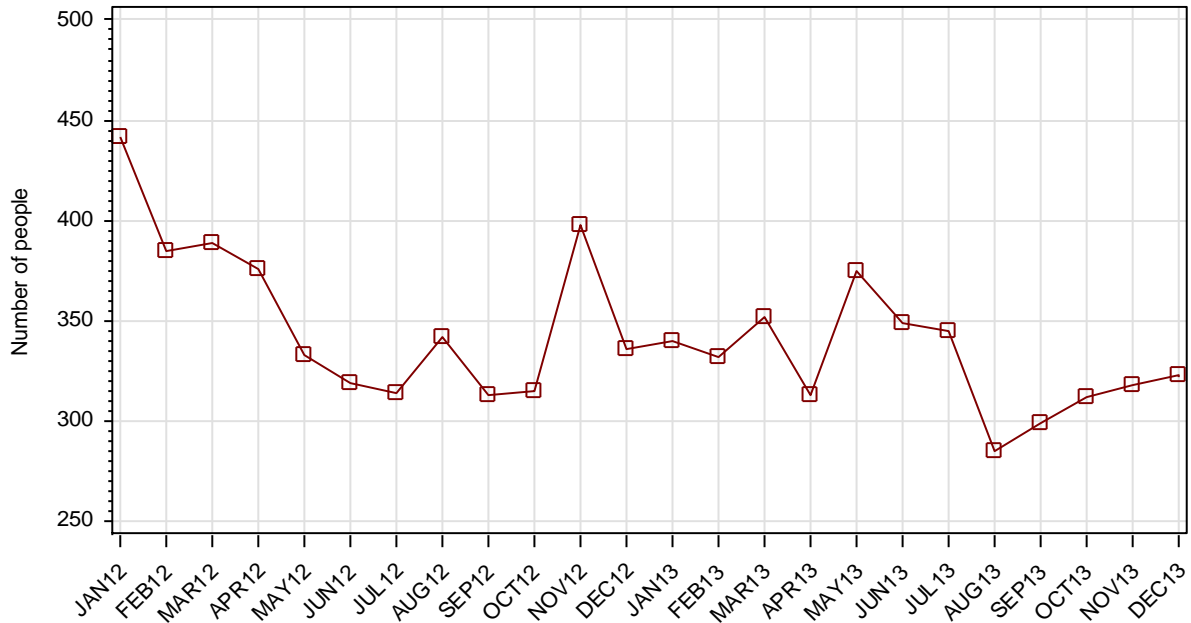


1.2.2 JUVENILES RECEIVED INTO CUSTODY BY LEGAL STATUS



SECTION 1.3 JUVENILE CUSTODY DISCHARGES

1.3.1 JUVENILES DISCHARGED FROM CUSTODY DURING MONTH

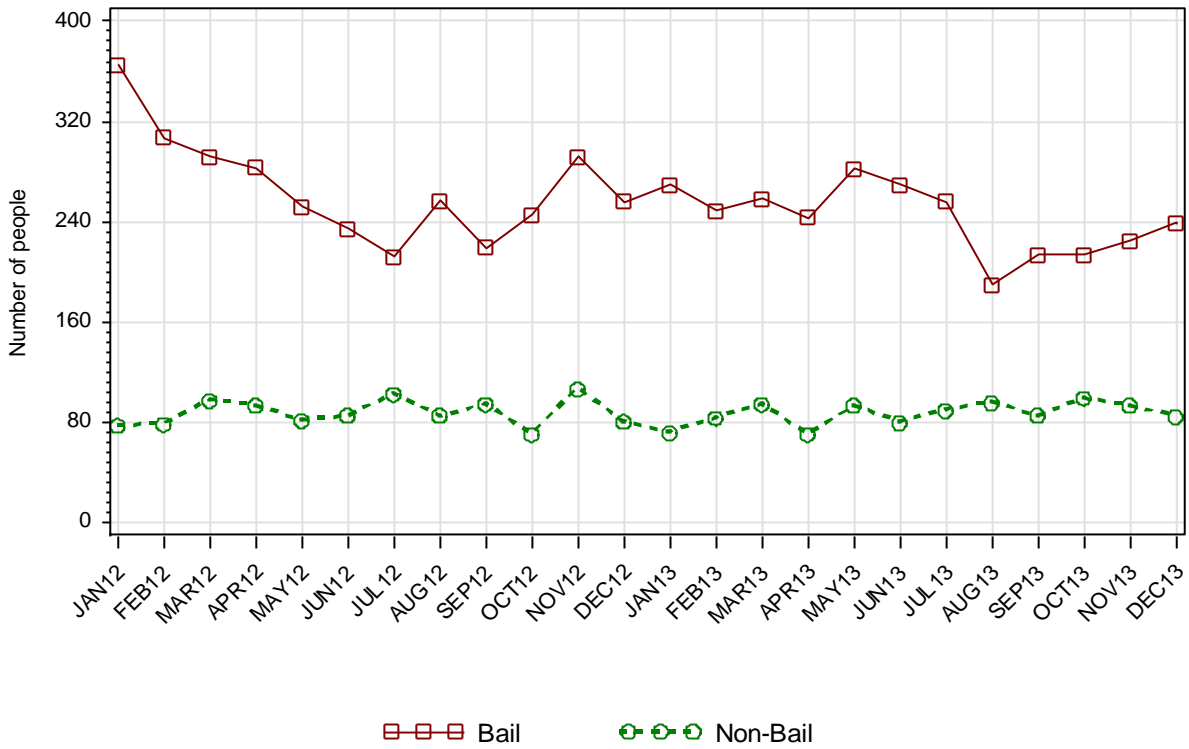


1.3.2 AVERAGE LENGTH OF STAY FOR JUVENILES DISCHARGED FROM CUSTODY EACH QUARTER

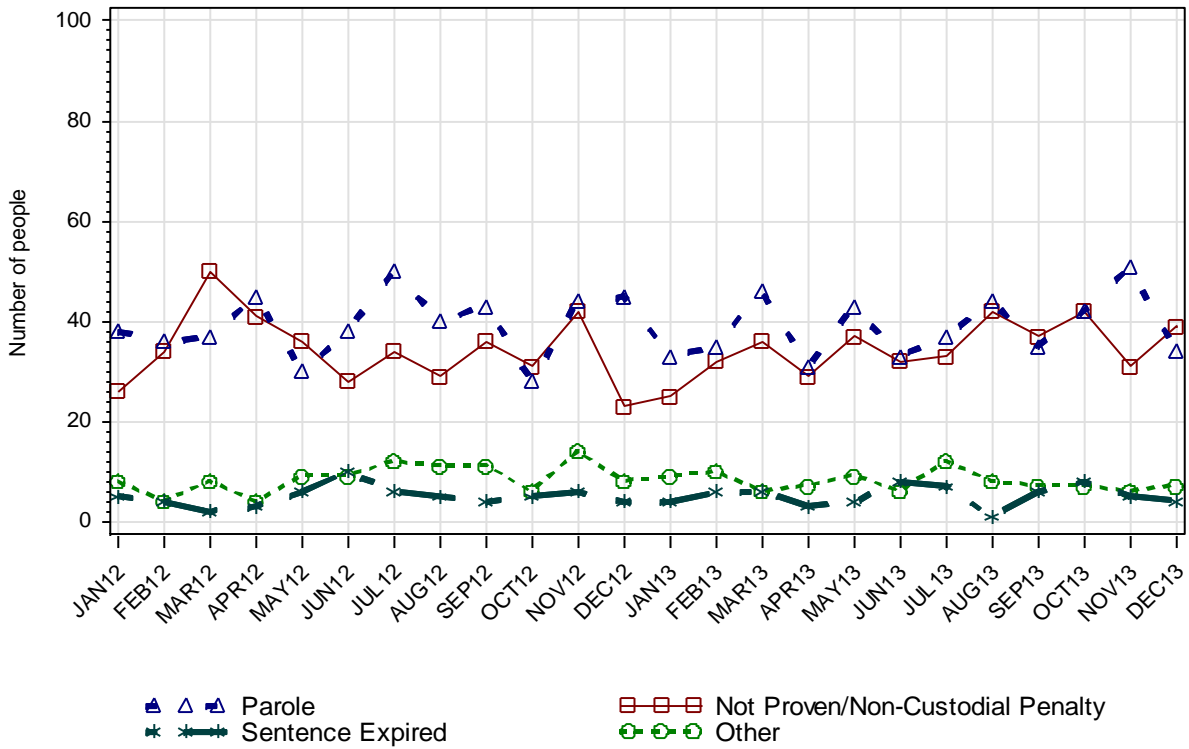
		Remand Custody Only		Sentenced Custody Only		Remand to Sentenced Custody	
		SEP13	DEC13	SEP13	DEC13	SEP13	DEC13
Total Male	Avg Days	10.4	8.8	81.5	124.2	160.9	154.6
	Number	596	606	32	42	101	110
Total Female	Avg Days	6.2	4.7	86.6	46.0	95.5	223.5
	Number	180	176	7	7	13	12
Indigenous Male	Avg Days	10.8	11.7	85.5	110.6	150.8	159.7
	Number	233	234	17	25	63	64
Indigenous Female	Avg Days	7.7	7.0	88.0	50.0	184.0	53.8
	Number	64	58	3	4	3	5
Total	Avg Days	9.4	7.9	82.4	113.0	153.4	161.3
	Number	776	782	39	49	114	122

Note: Length of Stay for Remand to Sentenced Custody is from the date of reception on remand to date of discharge after serving sentence.

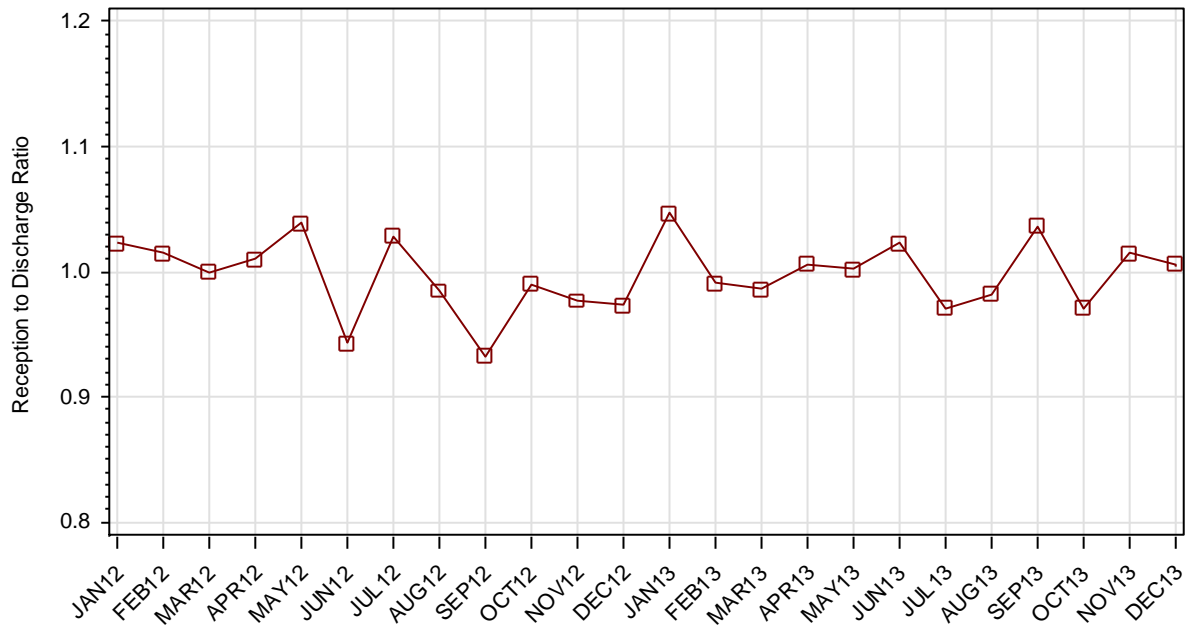
1.3.3 JUVENILES BY DISCHARGE TYPE



1.3.4 JUVENILES BY DISCHARGE TYPE (EXCLUDING BAIL)



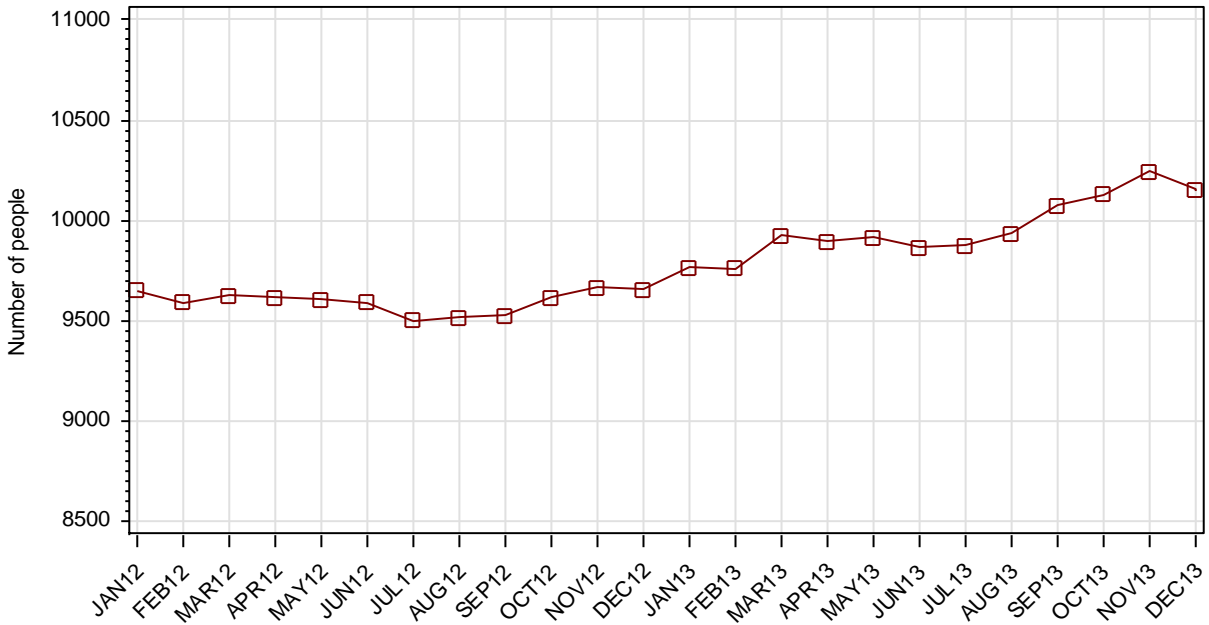
1.3.5 RATIO OF JUVENILE RECEPTIONS TO DISCHARGES



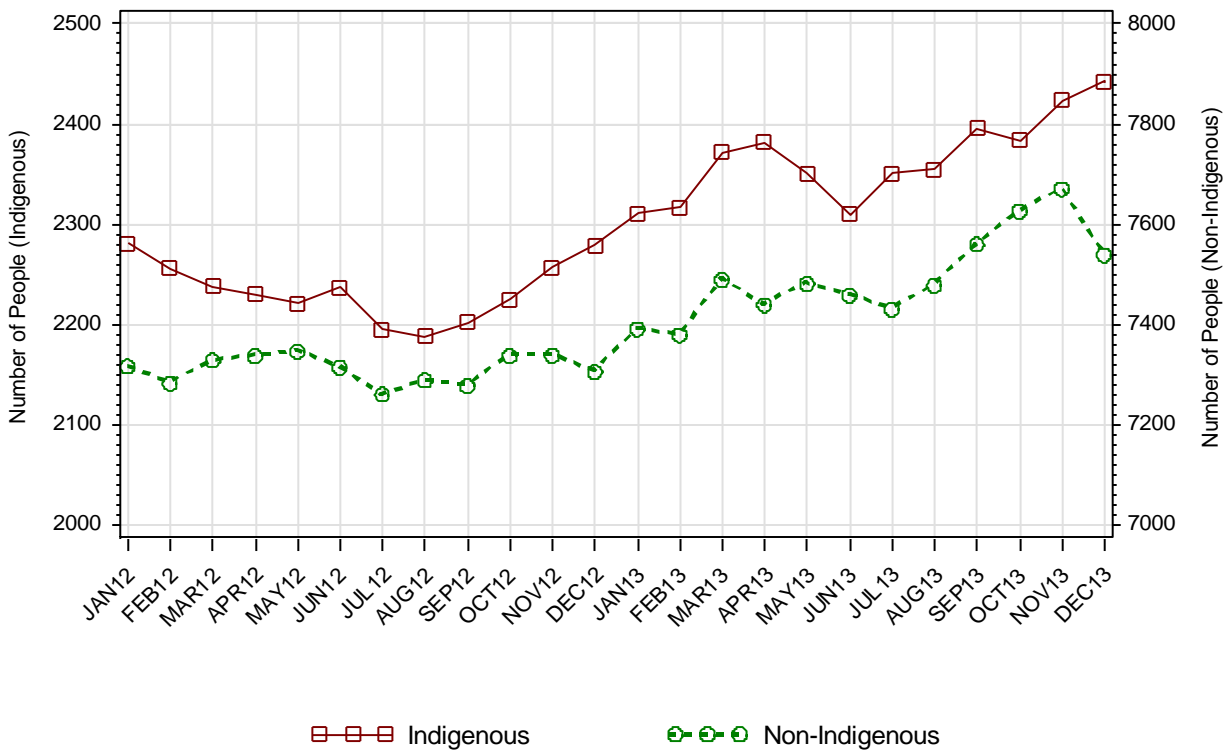
Part 2 ADULTS

SECTION 2.1 ADULT CUSTODY POPULATION

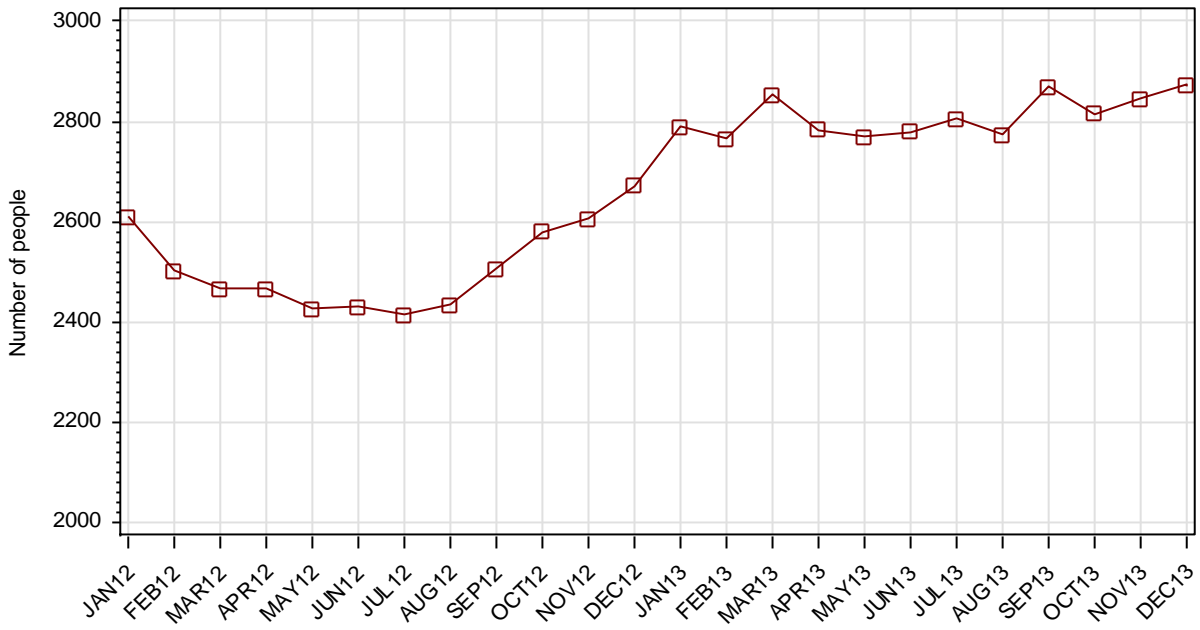
2.1.1 ADULT CUSTODY POPULATION AT END OF MONTH



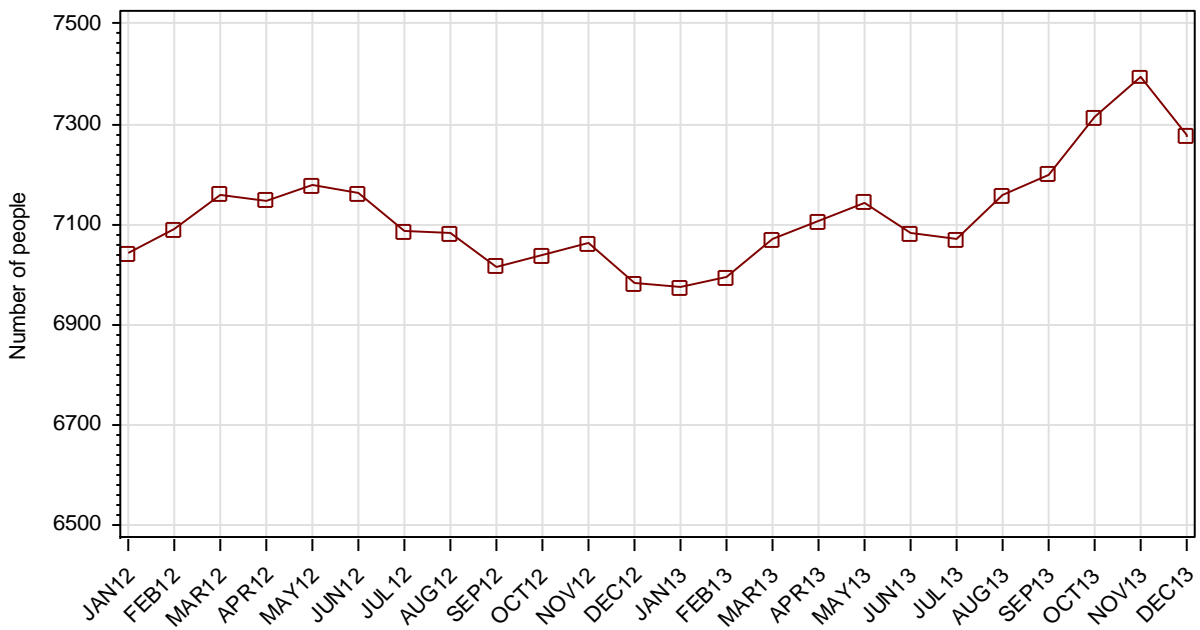
2.1.2 ADULT CUSTODY POPULATION BY INDIGENOUS STATUS



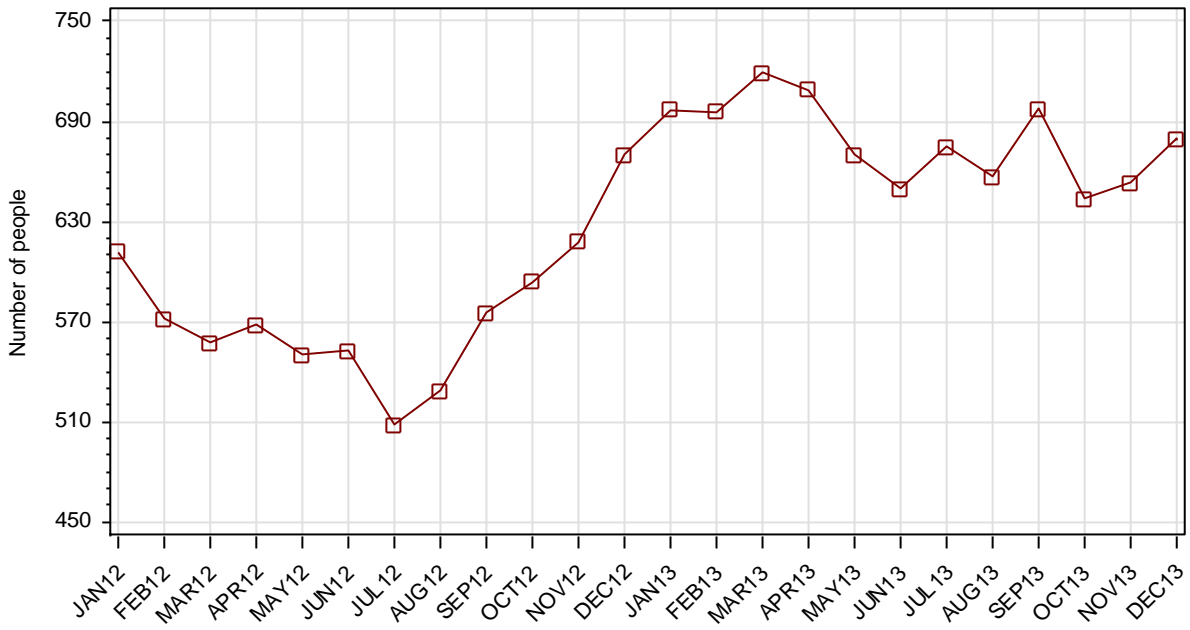
2.1.3 ADULT REMAND POPULATION



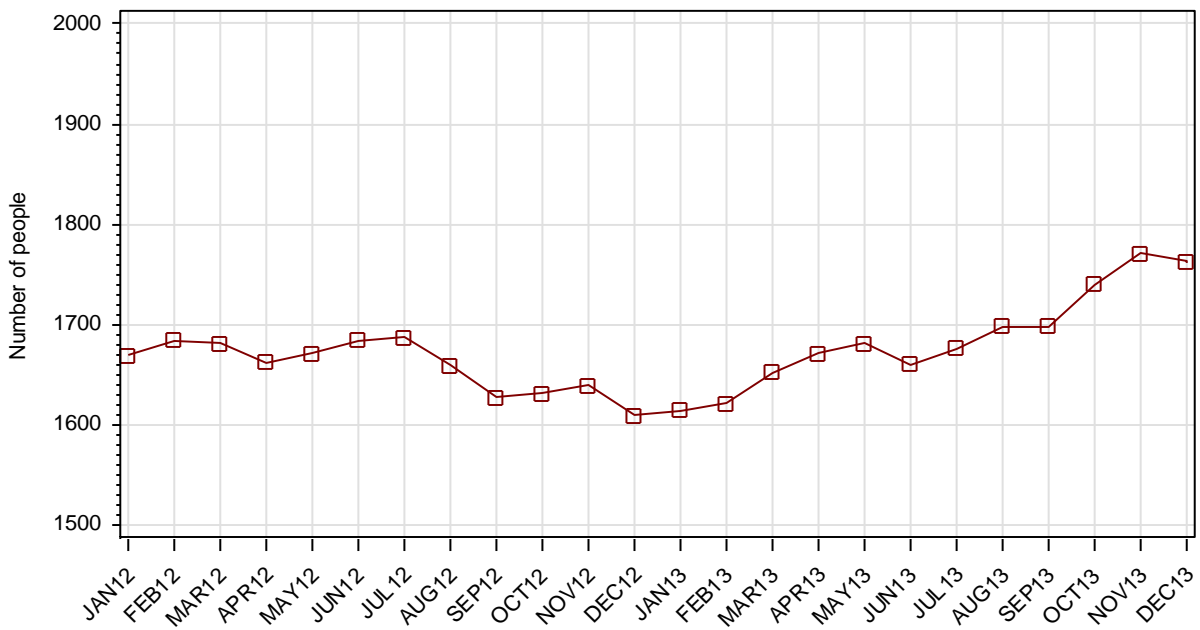
2.1.4 ADULT SENTENCED POPULATION



2.1.5 INDIGENOUS ADULT REMAND POPULATION



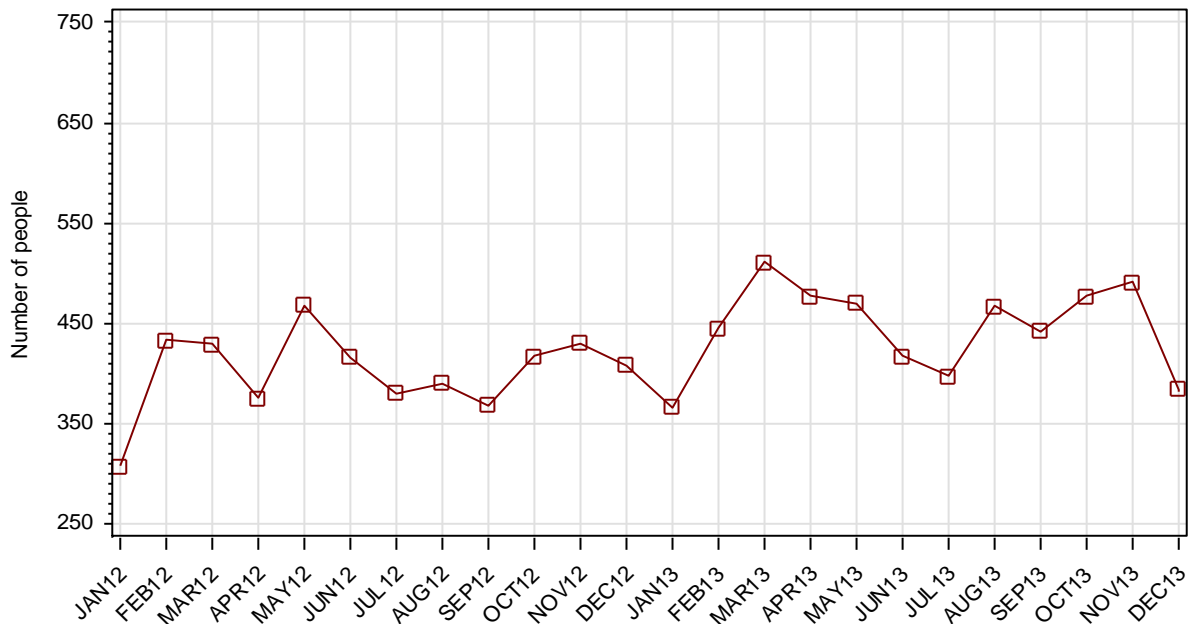
2.1.6 INDIGENOUS ADULT SENTENCED POPULATION



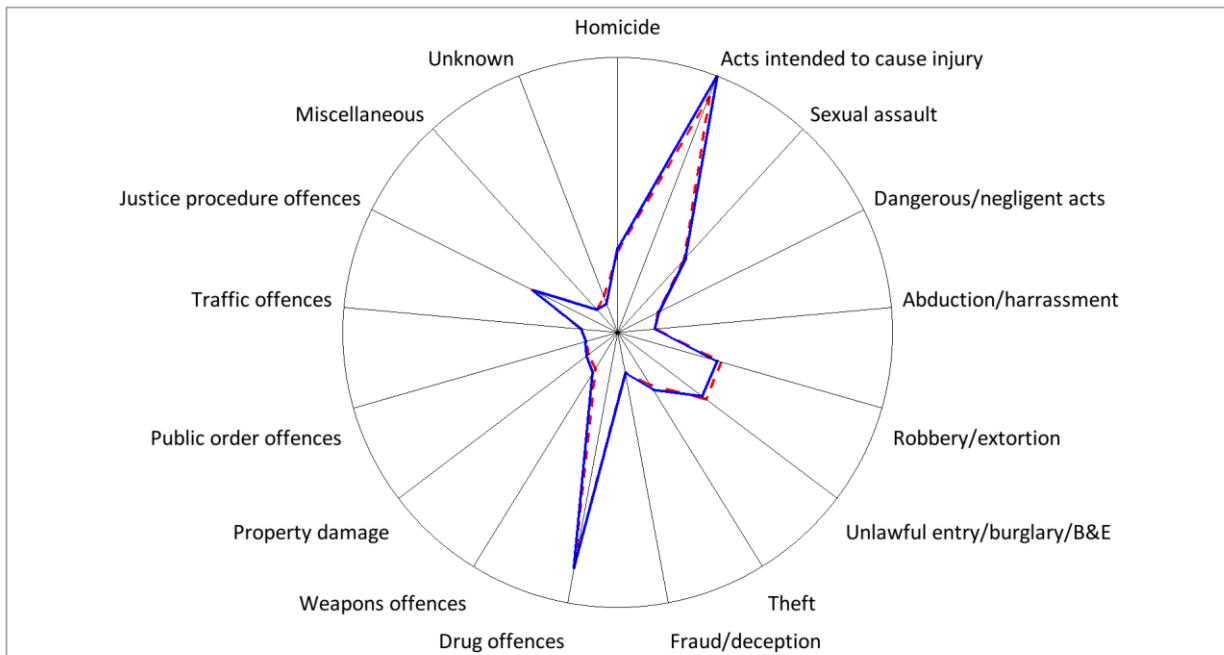
2.1.7 ADULT CUSTODY PROFILE AT END OF QUARTER

		Remand		Sentenced		Total	
		SEP13	DEC13	SEP13	DEC13	SEP13	DEC13
Total Male	Count	2626	2634	6748	6809	9374	9443
	Avg Age	33.4	33.8	36.3	36.2	35.5	35.5
Total Female	Count	245	239	452	470	697	709
	Avg Age	33.6	33.6	36.8	36.7	35.7	35.7
Indigenous Male	Count	606	603	1566	1608	2172	2211
	Avg Age	29.6	30.3	32.0	31.8	31.4	31.4
Indigenous Female	Count	92	77	132	155	224	232
	Avg Age	32.5	32.4	32.8	32.9	32.7	32.8
Total	Count	2871	2873	7200	7279	10071	10152
	Avg Age	33.4	33.7	36.3	36.3	35.5	35.5

2.1.8 ADULTS IN CUSTODY: NUMBER WHOSE LEGAL STATUS CHANGED DURING MONTH FROM REMAND TO SENTENCED



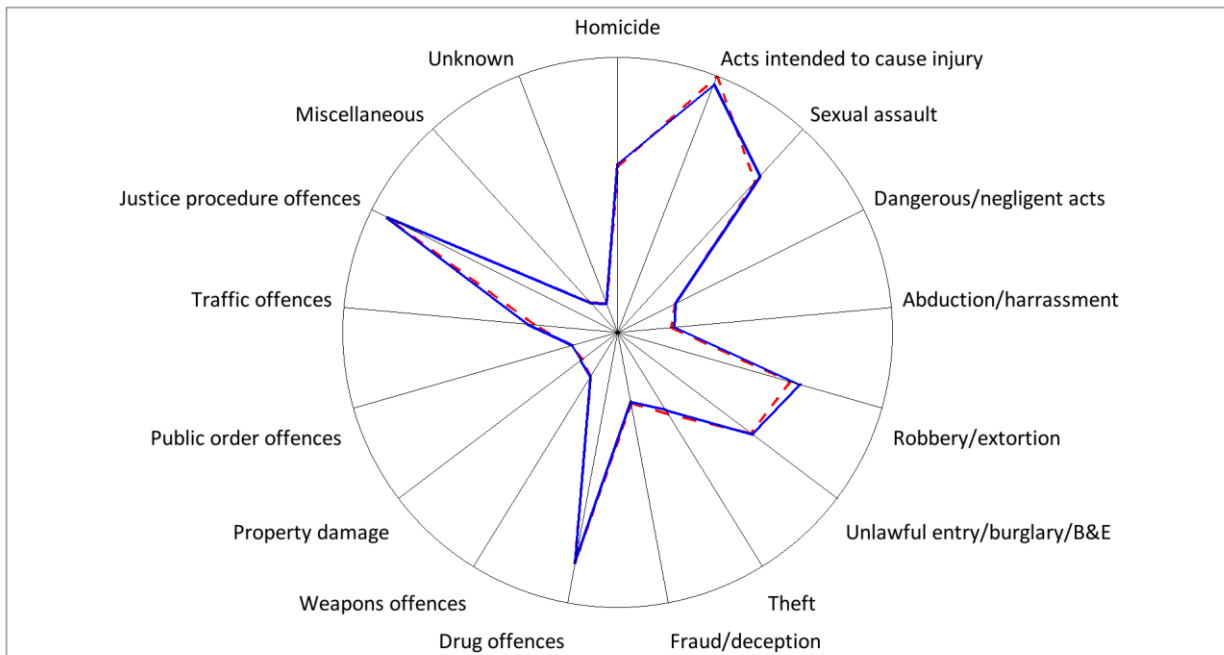
2.1.9 ADULT REMAND POPULATION BY MOST SERIOUS OFFENCE



As At: - -30SEP13 —31DEC13

	30SEP13		31DEC13	
	Number	% of Total	Number	% of Total
Homicide	164	5.8	173	6.0
Acts intended to cause injury	652	23.3	713	24.8
Sexual assault	211	7.5	219	7.6
Dangerous/negligent acts	59	2.1	64	2.2
Abduction/harrassment	41	1.5	39	1.4
Robbery/extortion	238	8.5	226	7.9
Unlawful entry/burglary/B&E	247	8.8	233	8.1
Theft	108	3.9	123	4.3
Fraud/deception	48	1.7	48	1.7
Drug offences	605	21.6	612	21.3
Weapons offences	55	2.0	69	2.4
Property damage	38	1.4	45	1.6
Public order offences	27	1.0	28	1.0
Traffic offences	39	1.4	36	1.3
Justice procedure offences	207	7.4	200	7.0
Miscellaneous	22	0.8	22	0.8
Unknown	43	1.5	22	0.8
Total	2804	100.0	2872	100.0

2.1.10 ADULT SENTENCED POPULATION BY MOST SERIOUS OFFENCE

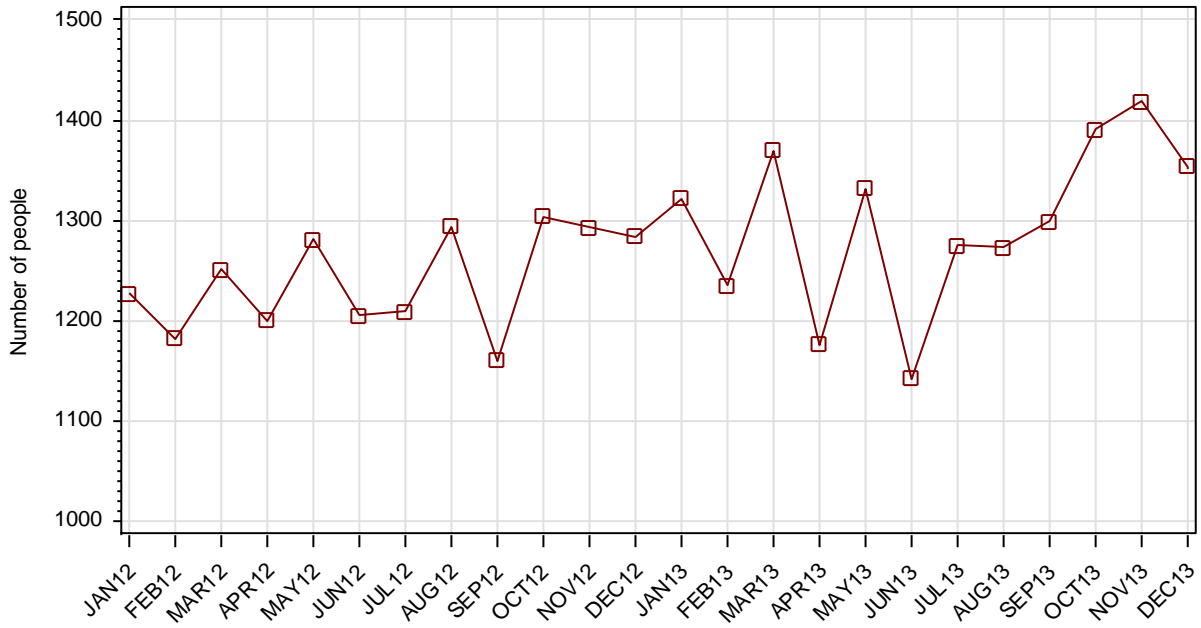


As At: - - - 30SEP13 — 31DEC13

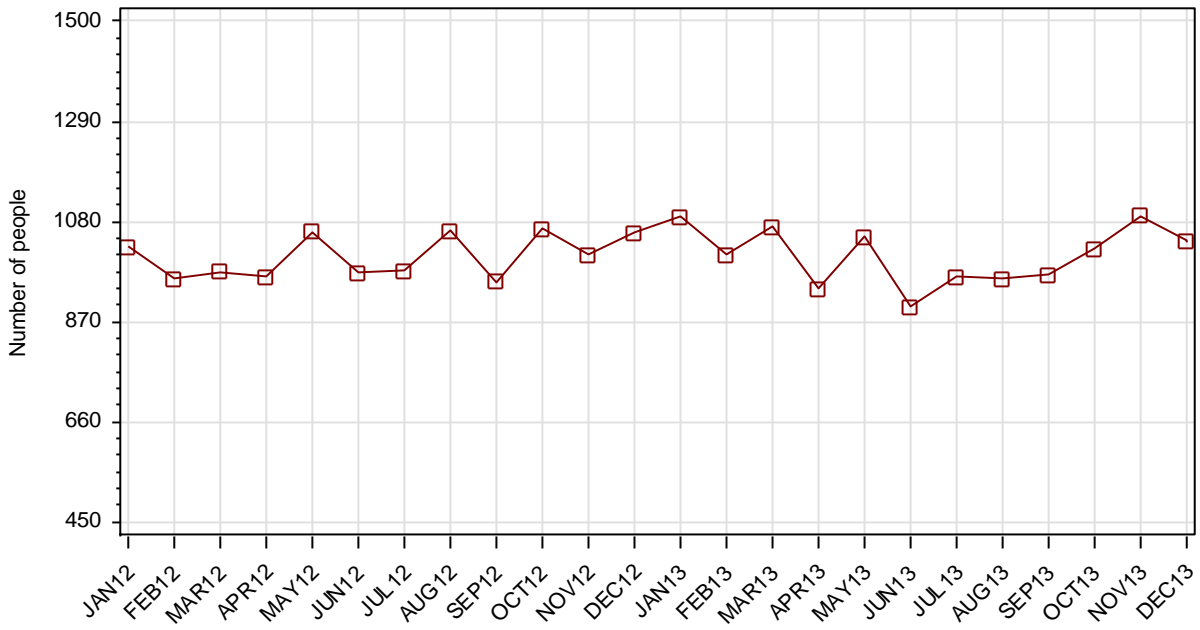
	30SEP13		31DEC13	
	Number	% of Total	Number	% of Total
Homicide	631	8.8	644	8.8
Acts intended to cause injury	1140	15.8	1099	15.1
Sexual assault	806	11.2	842	11.6
Dangerous/negligent acts	152	2.1	154	2.1
Abduction/harrassment	104	1.4	119	1.6
Robbery/extortion	693	9.6	742	10.2
Unlawful entry/burglary/B&E	634	8.8	645	8.9
Theft	304	4.2	279	3.8
Fraud/deception	191	2.7	182	2.5
Drug offences	952	13.2	951	13.1
Weapons offences	96	1.3	98	1.3
Property damage	61	0.8	70	1.0
Public order offences	82	1.1	74	1.0
Traffic offences	245	3.4	279	3.8
Justice procedure offences	1062	14.8	1061	14.6
Miscellaneous	43	0.6	41	0.6
Unknown	0	0.0	0	0.0
Total	7196	100.0	7280	100.0

SECTION 2.2 ADULT CUSTODY RECEPTIONS

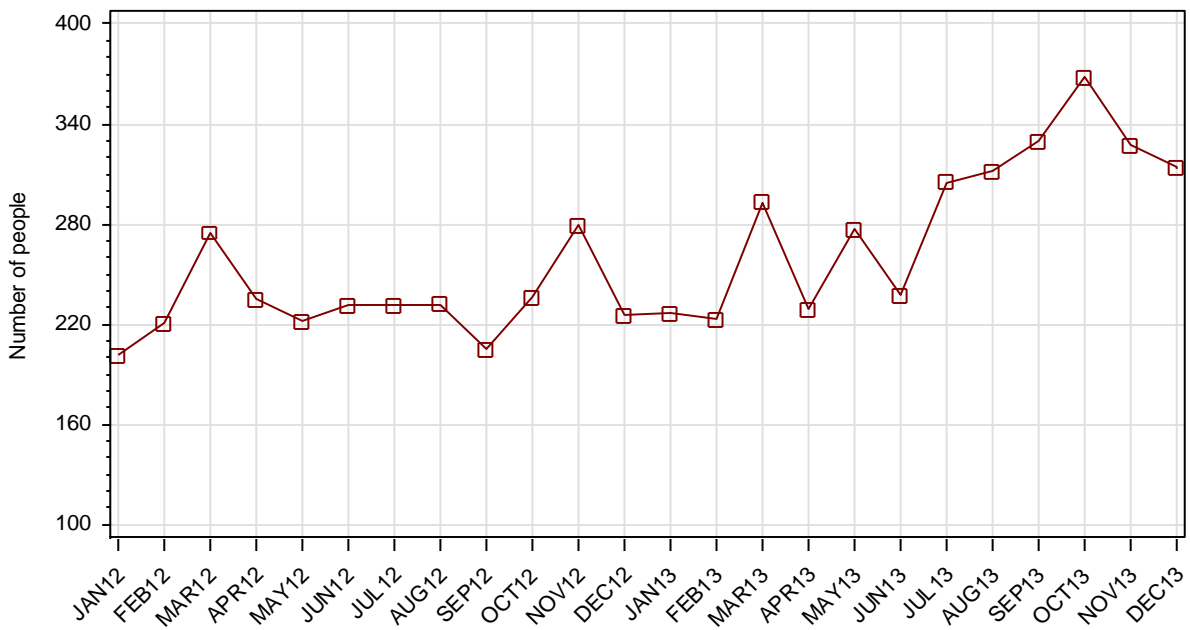
2.2.1 ADULTS RECEIVED INTO CUSTODY DURING MONTH



2.2.2 ADULT REMAND RECEPTIONS

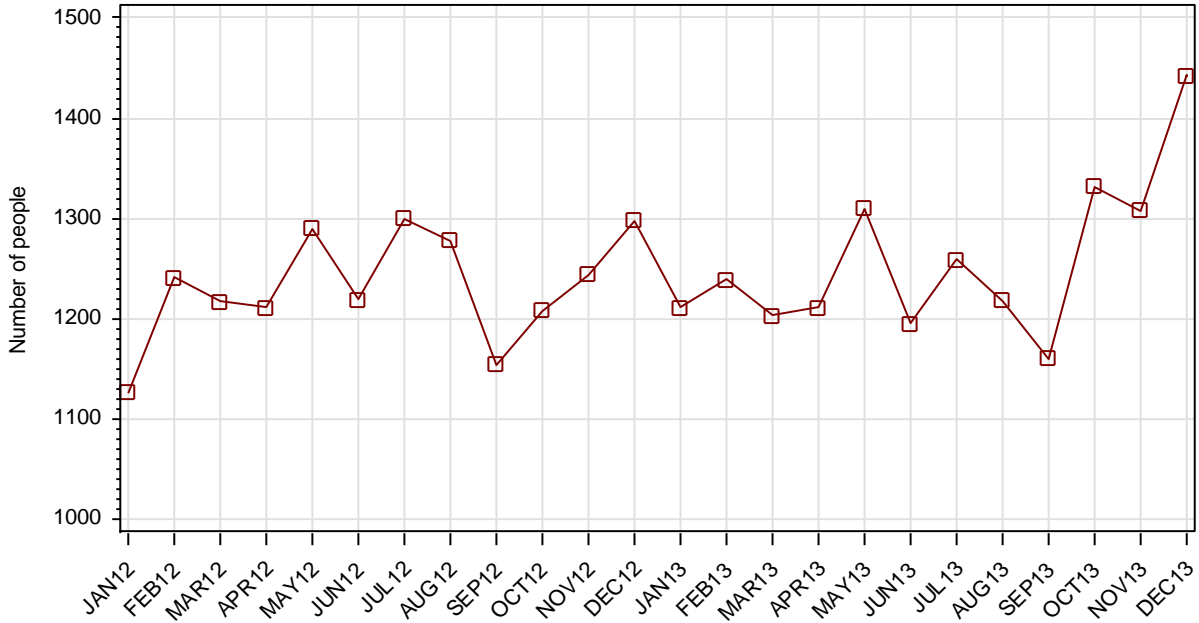


2.2.3 ADULT SENTENCED RECEPTIONS



SECTION 2.3 ADULT CUSTODY DISCHARGES

2.3.1 ADULTS DISCHARGED FROM CUSTODY DURING MONTH

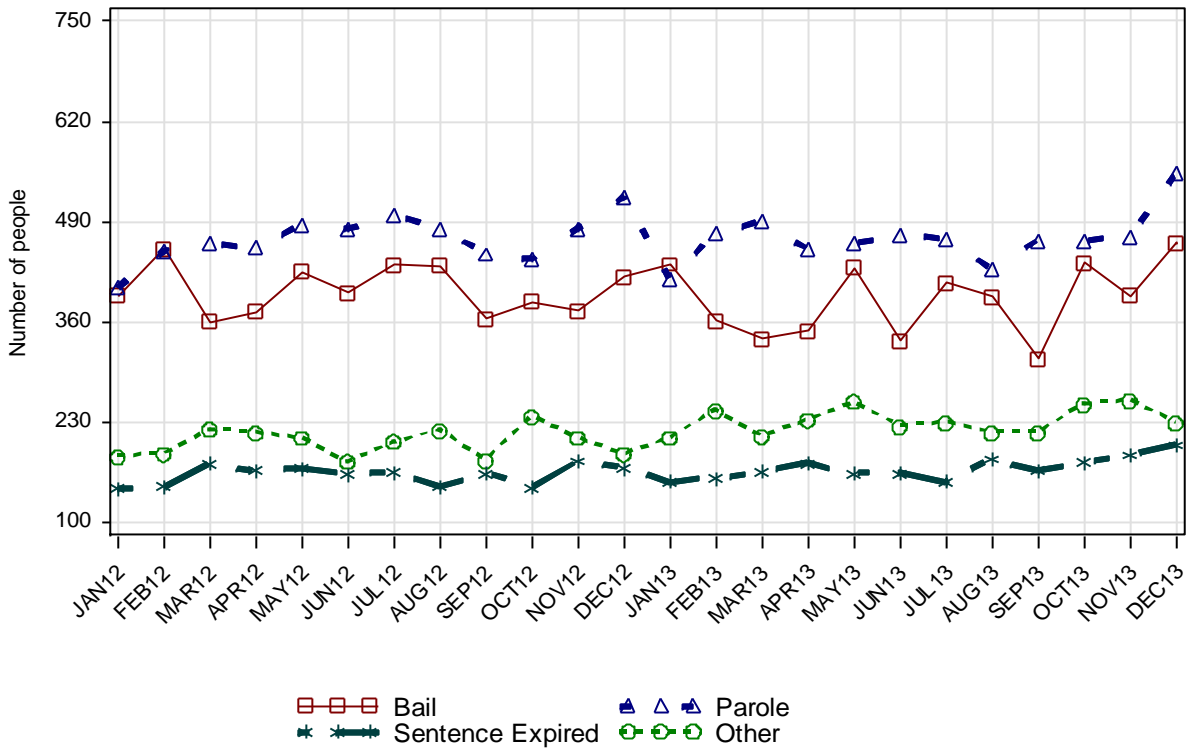


2.3.2 AVERAGE LENGTH OF STAY FOR ADULTS DISCHARGED FROM CUSTODY EACH QUARTER

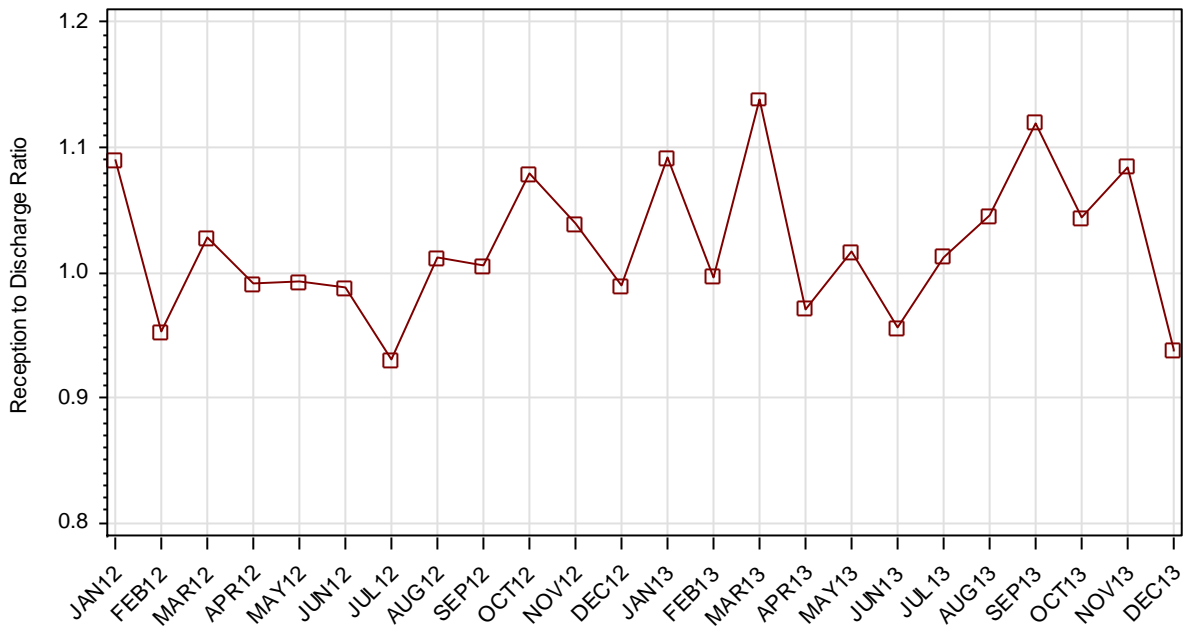
		Remand Custody Only		Sentenced Custody Only		Remand to Sentenced Custody	
		SEP13	DEC13	SEP13	DEC13	SEP13	DEC13
Total Male	Avg Days	42.4	44.6	223.0	217.6	449.3	455.7
	Number	1234	1416	708	906	1210	1234
Total Female	Avg Days	29.2	29.5	151.7	159.1	392.5	206.7
	Number	244	290	92	109	149	128
Indigenous Male	Avg Days	40.5	39.1	202.9	200.7	297.1	349.2
	Number	319	372	208	258	358	341
Indigenous Female	Avg Days	33.0	28.1	109.2	106.8	376.7	185.3
	Number	87	112	25	34	65	52
Total	Avg Days	40.2	42.0	214.8	211.3	443.1	432.3
	Number	1478	1706	800	1015	1359	1362

Note: length of Stay for Remand to Sentenced Custody is from the date of reception on remand to date of discharge after serving sentence.

2.3.3 ADULTS BY DISCHARGE TYPE



2.3.4 RATIO OF ADULT RECEPTIONS TO DISCHARGES



Part 3 DATA TABLES

Juvenile	1.In Custody										Remand to Sent
	Total	Legal Status			Indigenous			Indigenous Legal Status			
		Court Bail Ref.	Police Bail Ref.	Sent	Yes	No	Unk	Court Bail Ref.	Police Bail Ref.	Sent	
JAN12	335	179	11	145	177	154	4	101	3	73	29
FEB12	342	184	11	147	176	161	5	100	6	70	43
MAR12	342	181	15	146	186	154	2	102	9	75	39
APR12	345	199	7	139	179	164	2	113	2	64	36
MAY12	357	167	9	181	193	162	2	101	6	86	63
JUN12	339	155	7	177	176	160	3	86	4	86	46
JUL12	347	163	9	175	172	170	5	88	3	81	48
AUG12	346	146	7	193	176	166	4	85	3	88	48
SEP12	320	130	6	184	154	164	2	72	2	80	37
OCT12	319	115	13	191	157	160	2	62	6	89	39
NOV12	310	137	9	164	157	151	2	74	5	78	29
DEC12	301	153	2	146	152	145	4	83	0	69	37
JAN13	317	160	7	150	166	145	6	84	3	79	40
FEB13	313	155	11	147	169	141	3	85	5	79	30
MAR13	310	145	8	157	169	137	4	77	4	88	50
APR13	311	148	3	160	159	151	1	73	2	84	33
MAY13	313	161	6	146	156	154	3	79	2	75	39
JUN13	322	173	6	143	159	157	6	85	4	70	32
JUL13	310	151	8	151	145	160	5	79	4	62	41
AUG13	308	146	6	156	142	161	5	76	1	65	47
SEP13	312	141	3	168	160	147	5	74	1	85	46
OCT13	309	145	8	156	147	157	5	65	2	80	30
NOV13	314	159	4	151	149	154	11	66	1	82	39
DEC13	316	157	8	151	137	172	7	61	2	74	26

Juvenile	2.Receptions							3.Discharges									Ratio Rec/ Dis
	Tot	Legal Status			Indigenous			Tot	Legal Status					Indigenous			
		Court Bail Ref.	Police Bail Ref.	Sent	Yes	No	Unk		Bail	Not Proven Non- Cust.	Other	Parole	Sent Exp	Yes	No	Unk	
JAN12	452	146	299	7	217	228	7	442	365	26	8	38	5	198	235	9	1.02
FEB12	391	107	268	16	166	215	10	385	307	34	4	36	4	167	209	9	1.02
MAR12	389	111	269	9	167	212	10	389	292	50	8	37	2	157	219	13	1.00
APR12	380	103	262	15	179	197	4	376	283	41	4	45	3	185	187	4	1.01
MAY12	346	109	213	24	159	182	5	333	252	36	9	30	6	144	184	5	1.04
JUN12	301	90	204	7	132	163	6	319	234	28	9	38	10	149	165	5	0.94
JUL12	323	95	211	17	139	177	7	314	212	34	12	50	6	144	165	5	1.03
AUG12	337	87	233	17	173	159	5	342	257	29	11	40	5	171	165	6	0.99
SEP12	292	90	191	11	130	151	11	313	219	36	11	43	4	149	151	13	0.93
OCT12	312	81	216	15	137	170	5	315	245	31	6	28	5	135	175	5	0.99
NOV12	389	126	252	11	180	199	10	398	292	42	14	44	6	180	208	10	0.98
DEC12	327	103	215	9	143	178	6	336	256	23	8	45	4	147	185	4	0.97
JAN13	356	129	216	11	145	201	10	340	269	25	9	33	4	132	200	8	1.05
FEB13	329	120	196	13	151	174	4	332	249	32	10	35	6	148	177	7	0.99
MAR13	347	110	220	17	147	192	8	352	258	36	6	46	6	148	197	7	0.99
APR13	315	100	199	16	126	183	6	313	243	29	7	31	3	136	168	9	1.01
MAY13	376	141	225	10	139	228	9	375	282	37	9	43	4	143	225	7	1.00
JUN13	357	119	223	15	150	198	9	349	270	32	6	33	8	147	196	6	1.02
JUL13	335	113	200	22	138	189	8	345	256	33	12	37	7	151	185	9	0.97
AUG13	280	96	171	13	126	150	4	285	190	42	8	44	1	130	151	4	0.98
SEP13	310	92	202	16	125	181	4	299	214	37	7	35	6	102	193	4	1.04
OCT13	303	109	182	12	108	185	10	312	213	42	7	42	8	125	177	10	0.97
NOV13	323	119	184	20	126	179	18	318	225	31	6	51	5	125	181	12	1.02
DEC13	325	90	215	20	128	182	15	323	239	39	7	34	4	140	165	18	1.01

Adult	1.In Custody										Remand to Sent
	Total	Legal Status			Indigenous			Indigenous Legal Status			
		Remand	Sent	Unk	Yes	No	Unk	Remand	Sent	Unk	
JAN12	9650	2609	7041	0	2281	7316	53	612	1669	0	307
FEB12	9591	2502	7089	0	2256	7282	53	572	1684	0	433
MAR12	9625	2465	7160	0	2238	7328	59	557	1681	0	429
APR12	9614	2466	7148	0	2230	7337	47	568	1662	0	375
MAY12	9605	2426	7179	0	2221	7346	38	550	1671	0	468
JUN12	9591	2429	7162	0	2237	7314	40	553	1684	0	416
JUL12	9500	2414	7086	0	2195	7260	45	508	1687	0	380
AUG12	9516	2434	7082	0	2188	7288	40	529	1659	0	390
SEP12	9522	2506	7016	0	2202	7277	43	575	1627	0	368
OCT12	9618	2580	7038	0	2225	7337	56	594	1631	0	417
NOV12	9667	2606	7061	0	2257	7338	72	618	1639	0	430
DEC12	9653	2672	6981	0	2279	7305	69	670	1609	0	408
JAN13	9764	2789	6975	0	2311	7391	62	697	1614	0	366
FEB13	9760	2766	6994	0	2317	7379	64	696	1621	0	445
MAR13	9927	2855	7071	1	2372	7489	66	719	1652	1	511
APR13	9892	2784	7105	3	2382	7439	71	709	1671	2	477
MAY13	9914	2770	7144	0	2351	7481	82	670	1681	0	470
JUN13	9861	2780	7081	0	2310	7458	93	650	1660	0	417
JUL13	9877	2806	7071	0	2351	7430	96	675	1676	0	397
AUG13	9932	2774	7158	0	2355	7478	99	657	1698	0	467
SEP13	10071	2871	7200	0	2396	7560	115	698	1698	0	442
OCT13	10130	2816	7314	0	2384	7626	120	644	1740	0	477
NOV13	10241	2846	7395	0	2424	7671	146	653	1771	0	491
DEC13	10152	2873	7279	0	2443	7539	170	680	1763	0	384

Adult	2.Receptions							3.Discharges							Ratio Rec/ Dis	
	Tot	Legal Status			Indigenous			Tot	Legal Status				Indigenous			
		Remand	Sent	Unk	Yes	No	Unk		Bail	Other	Parole	Sent Exp	Yes	No		Unk
JAN12	1227	1026	201	0	380	817	30	1126	394	184	404	144	319	778	29	1.09
FEB12	1182	960	221	1	348	801	33	1241	454	188	453	146	373	835	33	0.95
MAR12	1251	975	275	1	344	869	38	1217	360	220	461	176	362	823	32	1.03
APR12	1200	965	235	0	352	834	14	1211	373	215	456	167	360	825	26	0.99
MAY12	1281	1059	222	0	350	910	21	1290	425	209	486	170	359	901	30	0.99
JUN12	1205	973	231	1	332	838	35	1219	398	178	481	162	316	870	33	0.99
JUL12	1209	978	231	0	331	849	29	1300	434	204	498	164	373	903	24	0.93
AUG12	1294	1062	232	0	353	916	25	1278	433	218	481	146	360	888	30	1.01
SEP12	1160	954	205	1	337	797	26	1154	364	179	448	163	323	808	23	1.01
OCT12	1304	1066	236	2	394	864	46	1208	386	236	441	145	371	804	33	1.08
NOV12	1293	1012	279	2	386	870	37	1244	375	209	481	179	354	869	21	1.04
DEC12	1284	1056	225	3	388	850	46	1298	418	188	522	170	366	883	49	0.99
JAN13	1322	1091	227	4	392	891	39	1211	435	209	415	152	360	805	46	1.09
FEB13	1235	1009	223	3	369	833	33	1239	362	244	476	157	363	845	31	1.00
MAR13	1370	1069	293	8	405	930	35	1203	337	211	490	165	350	820	33	1.14
APR13	1176	939	229	8	355	785	36	1211	348	232	455	176	345	835	31	0.97
MAY13	1332	1048	277	7	384	903	45	1310	430	256	461	163	415	861	34	1.02
JUN13	1142	900	237	5	303	792	47	1195	336	223	473	163	344	815	36	0.96
JUL13	1275	965	305	5	396	823	56	1259	411	228	468	152	355	851	53	1.01
AUG13	1273	960	312	1	365	859	49	1218	392	215	429	182	361	811	46	1.05
SEP13	1299	969	330	0	387	870	42	1160	312	215	466	167	346	788	26	1.12
OCT13	1391	1023	368	0	393	939	59	1332	437	252	466	177	405	873	54	1.04
NOV13	1419	1092	327	0	411	925	83	1308	394	257	470	187	371	880	57	1.08
DEC13	1354	1040	314	0	412	851	91	1443	463	228	552	200	393	983	67	0.94

Part 4 GLOSSARY

Adult

A person held in custody in a gazetted correctional centre managed by Corrective Services NSW (CSNSW). Persons may have been remanded in custody after being refused bail or sentenced to a custodial order for a proven offence.

The adult figures in this report include the small number of 16 and 17 year old males held in the Kariong Juvenile Correctional Centre.

ANZSOC

The Australian Bureau of Statistics Australian and New Zealand Standard Offence Classification (ANZSOC) groups criminal offences into 16 broad divisions:

1. Homicide and related offences
2. Acts intended to cause injury
3. Sexual assault and related offences
4. Dangerous or negligent acts endangering persons
5. Abduction, harassment and other offences against the person
6. Robbery, extortion and related offences
7. Unlawful entry with intent/burglary, break and enter
8. Theft and related offences
9. Fraud, deception and related offences
10. Illicit drug offences
11. Prohibited and regulated weapons and explosives offences
12. Property damage and environmental pollution
13. Public order offences
14. Traffic and vehicle regulatory offences
15. Offences against justice procedures, government security and government operations
16. Miscellaneous offences

For further information see:

<http://www.abs.gov.au/AUSSTATS/abs@.nsf/DetailsPage/1234.02011>

Note that shortened titles are used in this report.

Average length of stay

The length of stay is the duration of the custodial episode, from the date of reception to the date of discharge.

The average length of stay (in days) is presented for three types of custodial episodes:

Remand custody only - the person entered custody after being refused bail and was then discharged from custody without having been sentenced. Most commonly discharged after being granted bail, other reasons include criminal charges not proven, receiving a non-custodial penalty for a proven offence or being transferred interstate or from a juvenile to an adult prison or vice versa.

Sentenced custody only - persons who entered custody only after being sentenced to a custodial penalty by a court. These persons had either been granted bail, or bail had been dispensed with, pending finalisation of their charges.

Remand to sentenced custody - persons who had been remanded in custody prior to having a custodial sentence imposed by a court. The length of stay for these people is the entire time from reception on remand to discharge after serving the custodial sentence.

Note: Persons initially remanded in custody but then granted bail prior to having a custodial penalty imposed by a court are counted as two custodial episodes: one of remand custody only and one of sentenced custody only.

Bail

Under the provisions of the *Bail Act 1978*, police and courts may grant or refuse to grant bail to alleged offenders. The grant of bail takes into consideration the alleged offence and offender. Bail is granted at the offence level and so a person may be granted bail for one offence and refused bail for another offence.

Persons refused bail (and small numbers granted bail but unable to meet the bail conditions set by a court) are remanded into custody pending further court action.

Juvenile custody population data in this report disaggregates persons remanded into custody into those refused police bail and refused court bail. This is because all juveniles refused police bail are held in Juvenile Justice centres whereas not all adults refused police bail are held in gazetted correctional centres or 24 hour police cell complexes.

Control order

See Custodial sentence

Corrective Services NSW

Corrective Services NSW (CSNSW) is part of the NSW Department of Attorney General and Justice with responsibilities including the supervision of people remanded in custody pending the finalisation of criminal charges and offenders sentenced to a custodial order.

See <http://www.correctiveservices.nsw.gov.au/> for further information.

The Corporate Research, Evaluation and Statistics (CRES) section of CSNSW have provided the adult custody data for this report and advised on its interpretation.

Court bail refused

See Bail

Custodial episode

A custodial episode is the time between the reception into and discharge from custody. An individual may have multiple custodial episodes within the reporting period. A change in legal status between the reception and discharge date, for example changing from being bail refused to being sentenced to a custodial order, does not count as a new custodial episode.

Custodial sentence

Courts may impose a custodial sentence for a proven offence. For adults this is a term of imprisonment under the *Crimes (Sentencing Procedure) Act 1999*. For young people this is a control order of up to two years duration or a term of imprisonment to be served partly or wholly as a juvenile under the *Children (Criminal Proceedings) Act 1987*. A person may be given custodial sentences for multiple proven offences.

While the majority of persons held under sentence in a correctional centre are sentenced under the *Crimes (Sentencing Procedure) Act 1999*, offenders whose parole has been revoked by the State Parole Authority, persons sentenced under the *Commonwealth Crimes Act 1914*, those sentenced under the *Mental Health (Forensic Provision) Act 1990*, small numbers of persons held under immigration orders awaiting deportation following expiry of their sentence and persons sentenced under legislation in other states or territories are also managed by CSNSW.

Custody population

Persons held in custody in a JJNSW juvenile justice centre or a CSNSW gazetted correctional centre, whether remanded or sentenced. Custody population figures are counted as at midnight on the last day of the month or quarter as appropriate.

Discharge type

The type of reason why persons were discharged from custody:

Bail - courts granted the person bail pending the finalisation of their criminal charge(s).

Parole - the person was released to parole after serving the non-parole period of custodial sentence(s).

Sentence expired - the person was released after serving the entire period of all custodial sentence(s) imposed. This includes some persons who served both the non-parole and parole components of their sentence(s) in custody.

Not proven / non-custodial penalty - juvenile data only - the person was released after criminal charges were not proven or after the court imposed a non-custodial penalty for a proven offence, e.g. good behaviour bond.

Other - includes persons transferred to the NSW Drug Court, interstate or from a juvenile to an adult prison or vice versa and deceased persons. Includes adults released after criminal charges were not proven, after the court imposed a non-custodial penalty for a proven offence and where the specific nature of the court's final non-custodial disposal is unknown.

Discharges

Persons legally discharged from JJNSW or CSNSW custody in accordance with a court order (including any State Parole Authority order). For example - to parole, on expiry of a sentence or having been granted bail. Note that persons whose legal status changed from remand to sentenced or the reverse are not counted as discharges as they have not been discharged from custody.

Imprisonment

See Custodial sentence.

Indigenous status

Indigenous status as self-reported on reception into custody. Persons may identify as being Aboriginal or Torres Strait Islander, neither Aboriginal nor Torres Strait Islander or may not provide this information. An inmate is recorded as indigenous if they have identified as such in the current or any previous custodial episode. Indigenous status is unknown for a small proportion of people.

Juvenile

A person held in custody in a juvenile justice centre. These centres are managed by Juvenile Justice NSW (JJNSW). A young person in juvenile custody may have been refused bail by police, refused bail by the court or sentenced to a custodial sentence.

All young persons refused bail by police must be taken to a juvenile justice centre to be held in custody pending their court appearance. Young persons refused police bail cannot be held in a police or court cell.

Note: a small number of 16 and 17 year old males are held in Kariong Juvenile Correctional Centre which is managed by CSNSW. As Kariong is a gazetted correctional centre, these young persons are counted in the adult figures in this report.

Juvenile Justice NSW

Juvenile Justice NSW (JJNSW) is part of the NSW Department of Attorney General and Justice with responsibilities including the supervision of young people remanded in custody pending the finalisation of criminal charges and young offenders sentenced to a control order/imprisonment.

See <http://www.djj.nsw.gov.au/> for further information.

The Research and Information Section of JJNSW have provided the juvenile data for this report and advised on its interpretation.

Legal status

The legal status of persons received into or held in custody:

Remand (Juvenile) - Juveniles refused bail (and small numbers granted bail but unable to meet conditions) are remanded into custody pending future court action.

Juvenile remand figures are disaggregated into:

- Police bail refused - Police have refused to grant bail to a juvenile. All juveniles refused bail by police are held in custody in a juvenile justice centre pending future court action.
- Court bail refused - the courts have refused to grant bail to a juvenile pending future court action.

Remand (Adult) - adults refused bail (and small numbers granted bail but unable to meet conditions) are remanded in custody pending future court action. Includes a small number of persons refused police bail and remanded in custody in a gazetted correctional centre. Includes persons on remand who are being managed as correctional patients under the *Mental Health (Forensic Provisions) Act 1990*.

Sentenced - the courts have imposed custodial sentence(s) for proven offence(s). This category includes persons returned to custody after breaching parole. Includes forensic patients as per the *Mental Health (Forensic Provisions) Act 1990* (ie persons found unfit to be tried and persons found not guilty due to mental illness). Persons on remand for one or more offences and sentenced for one or more offences have a legal status of sentenced.

Unknown - adults whose legal status was not recorded at the time of admission.

Legal status changed from remand to sentenced

Persons whose legal status changed from remand to sentenced upon the imposition of a custodial sentence by a court. This report shows the numbers of persons during each month who changed from being on remand to being sentenced.

Most serious offence

The most serious offence type for which each person is in custody. The offence type categories in this report are the sixteen ANZSOC Divisions, with shortened titles (See ANZSOC).

Most serious offence data is presented in a radar chart and a data table. The radar chart comprises multiple spokes, each one representing an offence type category. The numbers of persons in custody at the end of the current and previous quarter are plotted on the spoke representing their most serious offence type. The data points for each quarter are connected. A different type/colour of line is used for each quarter, making changes from quarter to quarter apparent. Note that offence types with no observations are plotted a short distance from the zero radius so that the numbers for every offence type can be observed.

The data table displays the number and proportion of persons in custody for each of the most serious offence types. The data is presented separately for sentenced persons and persons on remand:

Most Serious Offence – Adults:

The most serious offence for adults is as provided by CSNSW.

Most Serious Offence – Juveniles:

Most serious offence for juveniles is compiled by matching custody order records from JJNSW with sentencing and bail refused orders sourced from the JusticeLink system used by the NSW criminal courts. Data is matched using JusticeLink Proceeding Number, a unique offence identifier which is available in the JJNSW data from January 2011.

- The most serious offence for juveniles remanded in custody is the offence with the highest Median Sentence Ranking (MSR). The MSR is a ranking of ANZSOC codes and was developed by the Bureau of Crime Statistics and Research using data on sentences imposed in the NSW criminal courts. The MSR can be used to select the most serious offence when sentencing data is not available and to select most serious offence when multiple offences have the same custodial order duration. For further information see the Bureau's Crime and Justice Bulletin No.142 "Measuring Offence Seriousness":
[www.bocsar.nsw.gov.au/lawlink/bocsar/ll_bocsar.nsf/vwFiles/CJB142.pdf/\\$file/CJB142.pdf](http://www.bocsar.nsw.gov.au/lawlink/bocsar/ll_bocsar.nsf/vwFiles/CJB142.pdf/$file/CJB142.pdf)
- The most serious offence for sentenced juveniles is the offence with the longest custodial order. For juveniles with more than one offence type with the same custodial order duration, the offence with the highest Median Sentence Ranking is selected as the most serious offence.
- Juveniles sentenced to a custodial order after breaching a non-custodial penalty (eg a suspended sentence, Community Service Order or good behaviour bond) have a most serious offence type of *Justice procedure offence* rather than the type of offence for which the non-custodial penalty was originally imposed (eg robbery/extortion, drug offences).

Note: this differs from the definition of most serious offence used in the Australian Bureau of Statistics Prisoners in Australia publication series (ABS cat.no.4517.0)

Police bail refused

See Bail.

Receptions

Persons received into Juvenile Justice custody or a gazetted correctional centre. Gazetted correctional centres are managed by CSNSW. Persons received into CSNSW custody and managed only in CSNSW 24-hour police/court cell complexes are excluded.

Ratio of receptions to discharges

The ratio of receptions to discharges. A ratio greater than 1 means there were more receptions than discharges during the month; a ratio less than 1 means there were more discharges than receptions during the month.

Remand

See Legal status.

Sentenced

See Legal status.

24 hour police/court cell complexes

In addition to gazetted correctional centres, CSNSW manage a number of police/court cell complexes. This report excludes persons received and then discharged from a CSNSW-managed 24 hour police/court cell complex without entering a gazetted correctional centre.