
NEW SOUTH WALES RECORDED CRIME STATISTICS 2001

Jacqui Allen, Marilyn Chilvers, Peter Doak,
Derek Goh, Tracy Painting and Mark Ramsay

NSW BUREAU OF CRIME STATISTICS AND RESEARCH

ACKNOWLEDGEMENTS

The production of this report was greatly assisted by officers within the NSW Police Service. Special thanks are due to officers in Information Technology and in Corporate Information, Organisational, Policy and Development. Thanks also to Jonathan Nichol at the NSW Bureau of Crime Statistics and Research who carried out the desktop publishing of the report.

2002

Published by the NSW Bureau of Crime Statistics and Research
Attorney General's Department
Level 8
St James Centre
111 Elizabeth Street
Sydney

Phone: (02) 9231 9190

Fax: (02) 9231 9187

Email: bcsr@agd.nsw.gov.au

Website: www.lawlink.nsw.gov.au/bocsar

SSN 1035-9044

INTRODUCTION

This report presents data on crimes reported to or detected by NSW police from January 1999 to December 2001. The data were extracted from the Computerised Operational Policing System (COPS) of the NSW Police Service in January 2002.

The report includes an overview of trends over the most recent two-year period for a selection of serious offence categories. The overview in this year's report indicates that four of the sixteen major offence categories are trending upwards. Between 2000 and 2001, increases were recorded in the numbers of recorded incidents of assault, robbery with a firearm, steal from person and fraud in NSW. There are significant downward trends in two of the selected offence categories. These are break and enter – dwelling and indecent assault, act of indecency, other sexual offences.

Dr Don Weatherburn
Director

March 2002

CONTENTS

| | |
|---|----|
| DEFINITIONS AND EXPLANATORY NOTES | vi |
| OVERVIEW OF MAJOR TRENDS, 2000 AND 2001, NEW SOUTH WALES | 1 |
| Figure 1 Murder | 5 |
| Figure 2 Assault | 6 |
| Figure 3 Sexual assault and indecent assault, act of indecency, other sexual offences | 7 |
| Figure 4 Robbery with and without a weapon | 8 |
| Figure 5 Break and enter – dwelling and non-dwelling | 9 |
| Figure 6 Motor vehicle theft and steal from motor vehicle | 10 |
| Figure 7 Steal from retail store, from dwelling and from person | 11 |
| Figure 8 Fraud | 12 |
| Figure 9 Malicious damage to property | 13 |
| Figure 10 Charge | 14 |
| Figure 11 Court Attendance Notice | 14 |
| Figure 12 Summons | 15 |
| Figure 13 Field Court Attendance Notice | 15 |
| MONTHLY TRENDS IN RECORDED CRIMINAL INCIDENTS, 1999, 2000 AND 2001, NEW SOUTH WALES | 17 |
| Table 1.1 Monthly trends in recorded criminal incidents, 1999 New South Wales: Type of offence | 18 |
| Table 1.2 Monthly trends in recorded criminal incidents, 2000 New South Wales: Type of offence | 22 |
| Table 1.3 Monthly trends in recorded criminal incidents, 2001 New South Wales: Type of offence | 26 |
| MONTHLY TRENDS IN METHODS OF PROCEEDING AGAINST ALLEGED OFFENDERS, 1999, 2000 AND 2001, NEW SOUTH WALES | 31 |
| Table 2.1 Monthly trends in methods of proceeding against alleged offenders, 1999 New South Wales: Type of process | 32 |
| Table 2.2 Monthly trends in methods of proceeding against alleged offenders, 2000 New South Wales: Type of process | 33 |
| Table 2.3 Monthly trends in methods of proceeding against alleged offenders, 2001 New South Wales: Type of process | 34 |
| CLEARED CRIMINAL INCIDENTS FOR SELECTED OFFENCES, JANUARY 1999 TO SEPTEMBER 2001, NEW SOUTH WALES | 35 |
| Table 3.1 Cleared criminal incidents, selected offences, January 1999 to December 1999, New South Wales: Type of offence. | 36 |
| Table 3.2 Cleared criminal incidents, selected offences, January 2000 to December 2000, New South Wales: Type of offence | 37 |
| Table 3.3 Cleared criminal incidents, selected offences, January 2001 to September 2001, New South Wales: Type of offence. | 38 |

CONTENTS continued

| | |
|--|----|
| RECORDED CRIME STATISTICS IN NEW SOUTH WALES REGIONS FOR SELECTED OFFENCES, 1999, 2000 AND 2001 | 39 |
| Table 4.1 Murder | 41 |
| Table 4.2 Assault | 42 |
| Table 4.3 Sexual assault | 43 |
| Table 4.4 Indecent assault, act of indecency, other sexual offences | 44 |
| Table 4.5 Robbery without a weapon | 45 |
| Table 4.6 Robbery with a firearm | 46 |
| Table 4.7 Robbery with a weapon not a firearm | 47 |
| Table 4.8 Break and enter – dwelling | 48 |
| Table 4.9 Break and enter – non-dwelling | 49 |
| Table 4.10 Receiving, goods in custody | 50 |
| Table 4.11 Motor vehicle theft | 51 |
| Table 4.12 Steal from motor vehicle | 52 |
| Table 4.13 Steal from retail store | 53 |
| Table 4.14 Steal from dwelling | 54 |
| Table 4.15 Steal from person | 55 |
| Table 4.16 Fraud | 56 |
| Table 4.17 Malicious damage to property | 57 |
| Table 4.18 Possession and/or use of cocaine | 58 |
| Table 4.19 Possession and/or use of narcotics | 59 |
| Table 4.20 Possession and/or use of cannabis | 60 |
| Table 4.21 Dealing, trafficking in cocaine | 61 |
| Table 4.22 Dealing, trafficking in narcotics | 62 |
| Table 4.23 Dealing, trafficking in cannabis | 63 |
| Table 4.24 Cultivating cannabis | 64 |
| Table 4.25 Offensive conduct | 65 |
| Table 4.26 Offensive language | 66 |
| Table 4.27 Breach Apprehended Violence Order | 67 |
| Table 4.28 PCA driving offences | 68 |
| Table 4.29 Drive while disqualified | 69 |
| Table 4.30 Drive manner/speed dangerous | 70 |
| APPENDICES | 71 |
| Appendix 1 Offences included in classifications | 72 |
| Appendix 2 Maps | 77 |
| Appendix 3 Local Government Areas in Statistical Divisions | 79 |

DEFINITIONS AND EXPLANATORY NOTES

The data in this report are extracted from the NSW Police Service's Computerised Operational Policing System (COPS). This system is used for record-keeping for all police operations, not just for criminal matters.

In this report:

- the counting units are recorded *criminal incidents* (except for murder and manslaughter where the counting units are victims) rather than recorded *offences*; and
- the data are categorised by date of *reporting* to police (or date of detection by police) rather than by date of *occurrence* of the offence.

RECORDED CRIMINAL INCIDENTS

A *criminal incident* is defined as an activity detected by or reported to police which:

- involved the same offender(s);
- involved the same victim(s);
- occurred at the one location;
- occurred during one uninterrupted period of time;
- falls into one offence category;
- falls into one incident type (for example, 'actual', 'attempted', 'conspiracy').

One incident may involve two offenders assaulting the same victim. This would be recorded as one assault incident. Alternatively, suppose a man reports to police that his neighbour demanded money from him, then assaulted him when he did not comply. For such an event, two criminal incidents are recorded because two distinct offence types are involved (demand money with menaces and assault) even though the same parties were involved at the same time and in the same place.

RECORDED VICTIMS

For murder and manslaughter only, the counting units used are victims. Under the definition of a criminal incident (same parties, same time, same place, same offence and same incident type) one murder or manslaughter incident could involve two or more persons being killed. Because of the seriousness of these offences and their relatively small numbers, it was considered to be more appropriate to count the number of victims, rather than the number of criminal incidents. Hence, where *one* murder incident involves a person killing six people, *six* murder victims are counted.

OFFENCE CATEGORIES

The classification of offences in this report is based on the Australian National Classification of Offences (ANCO) issued by the Australian Bureau of Statistics (ABS, 1985, Cat. No. 1234.0).

For all *type of offence* classifications used in the report, Appendix 1 lists the offence categories included in the classification. The offence categories are those used by the NSW Police Service and do not necessarily correspond exactly with offences defined in legislation.

COUNTING PERIOD

Criminal incidents are included in the counting period in which they were reported to or detected by police.

In most cases criminal incidents are recorded on COPS on the day of reporting. Because the reporting date and recording date may differ, it is possible for some updating of data to occur. That is, data extracted for a specified period of time (incidents reported in 2000, for example), may differ according to the date of extraction of the data.

PROCEEDINGS AGAINST ALLEGED OFFENDERS

Police may proceed against offenders and alleged offenders through a variety of legal or other processes. Most alleged offenders are referred to the NSW criminal courts. The more serious offences are dealt with by way of a charge. The alleged offender is arrested, taken to a police station, fingerprinted and the details of the person and charge are recorded. A Court Attendance Notice (CAN) may be issued at a police station or a Field Court Attendance Notice (FCAN) may be issued by police at other locations. Either type of Court Attendance Notice specifies the particulars of the alleged offence, the date and place of the court hearing and the consequences of failure to attend. A summons may be used for less serious offences. The court issues a summons at the request of an informant. The summons specifies the alleged offence and the date and place of the court hearing.

Some alleged offenders are proceeded against but diverted from the criminal court system. For many minor offences police can issue Infringement Notices. By paying the prescribed penalty the offender avoids having to go to court. Police also have the discretion to issue warnings to offenders. More recently, the *Young Offenders Act 1997* introduced the Youth Justice Conferencing scheme. A Youth Justice Conference (YJC) is a face to face meeting between offenders, victims and their support persons. A convenor acts as a facilitator for the meeting. The parties discuss the offending behaviour and the impact on the victim. They also negotiate some form of restitution to the victim. The *Young Offenders Act 1997* also provides for cautions to be issued to juvenile offenders.

Some offenders or alleged offenders are not proceeded against. The offender or alleged offender may be deceased, be under the age of ten years, have diplomatic immunity or be mentally incapable of forming criminal intent. The victim or the Director of Public Prosecutions may refuse to prosecute. A small number of offenders or alleged offenders are temporarily not proceeded against while police await further advice, for example whether a juvenile should be referred to a YJC.

CLEARED CRIMINAL INCIDENTS

A cleared criminal incident is one which, in the view of police, has been satisfactorily cleared by charge or otherwise.

An incident is cleared by charge when police have laid a charge or an information against at least one person. The information may have been laid with a view to the issuing of a warrant, summons or other process for the purpose of bringing an offender before the court.

A criminal incident is cleared other than by charge when, under normal circumstances, a charge or information would have been laid against at least one person, but, for a variety of reasons, police have been unable to make an arrest, despite knowing the identity of the offender and having sufficient evidence to support a charge. Examples of situations in which an offence may be cleared other than by charge include the following:

- the offender is a juvenile and is cautioned;
- the offender has died before a charge is made or information laid;
- the offender has been committed to a psychiatric institution and is unlikely to be released;
- there is an obstacle to charging, such as diplomatic immunity;
- the complainant or essential witness is dead and proceedings would be aborted;
- the offender is serving a sentence and police consider that no useful purpose would be served by prosecution.

REGIONAL STATISTICS

Statistics are provided on the number of criminal incidents (victims for murder) recorded for each of the Statistical Divisions of NSW as defined by the Australian Bureau of Statistics (ABS). Within the Sydney Statistical Division, statistics are provided for Statistical Subdivisions. Recorded criminal incidents which occurred in correctional, detention or remand centres, however, are not counted in the Statistical Division in which the incident occurred. Numbers of such incidents are noted at the foot of each table. Appendix 2

provides maps indicating the location of each Statistical Division and Sydney Statistical Subdivision. Appendix 3 lists the Local Government Areas within each of the Statistical Divisions and Statistical Subdivisions. A criminal incident is counted within a particular region when the location of the offence falls within that region.

For the rate calculations, population data were obtained from the Australian Bureau of Statistics publications: *Regional Population Growth, Australia, 20 Feb 2001*, Cat. No. 3218.0 (for 1999 population estimates), and *Regional Population Growth, Australia, 19 Feb 2002*, Cat. No. 3218.1 (for 2000 and 2001 population estimates).

ORGANISATION OF THE REPORT

The report is organised into five main sections as follows. First, there is an overview of major trends in recorded criminal incidents (recorded victims for murder) over the two-year period from January 2000 to December 2001. Figures showing trends in selected offences are presented, as well as summary points indicating which trends are statistically significant and the highest and lowest offending rates in Statistical Divisions of rural NSW and Statistical Subdivisions of Sydney. This section also includes figures showing trends in methods of proceeding against offenders and alleged offenders which lead to attendance at court.

The second section presents, for all categories of offence, the monthly numbers of recorded criminal incidents (recorded victims for murder and manslaughter). There are three tables in this section, one each for 1999, 2000 and 2001. Each table provides a total for the year and the annual rate per 100,000 population. The data used for the trend analysis in the first section of the report are included in these tables. Note, however, that the trend analysis uses only the most recent two years of data.

The third section provides monthly numbers of offenders or alleged offenders proceeded against, by the type of process pursued, for those criminal incidents recorded by NSW police in the reference year. There are three tables in this section, one each for 1999, 2000 and 2001. Each offender or alleged offender appears only once in the table for each event (there can be more than one criminal incident associated with a single event). The processes are arranged in a hierarchy with the offender or alleged offender appearing in the most serious category where multiple incidents are involved. For example if an event involves two incidents and the alleged offender is charged for one incident but receives a warning for the second incident, the alleged offender appears only in the 'Charged' category. Note that in these tables the year refers to the year in which the criminal incident or incidents were reported to the police. For example, if an incident was reported to police in 2000 but the alleged offender was not apprehended and charged until 2001, the charge is recorded for 2000.

The fourth section provides the numbers and percentages of cleared criminal incidents, for selected types of offence, for 1999, 2000 and 2001. The offence types included in these tables are those where the crime is likely to have been reported to police, rather than discovered or detected by police. Offence types where the numbers of recorded criminal incidents are influenced by police law enforcement activity (drug offences, for example) are excluded. For such offence types the clear-up percentages are very high because clearing the offence generally occurs simultaneously with its detection (that is, an arrest is made when the crime is discovered).

The tables for 1999 and 2000 show the number of recorded criminal incidents and, of these, the number and percentage which had been cleared 30 days, 90 days and 180 days after the incident was reported to police. The table for 2001 is similar to those for 1999 and 2000 except that there are only two follow-up periods, 30 days and 90 days. Because the data for this report were extracted in January 2001, the clear-up status after 90 days could not be determined for any offences reported in the last three months of 2001. Hence, the clear-up data for 2001 are for the first nine months of the year only.

In the fifth section of the report there are 30 tables, one for each major offence category. Each table gives the numbers and rates (per 100,000 population) of recorded criminal incidents (for murder, recorded victims) for the periods January to December 1999, 2000 and 2001, for each of the NSW Statistical Divisions and for each Statistical Subdivision in Sydney. Recorded criminal incidents which occurred in custodial institutions are counted separately; they are not included in the data for the Statistical Division where the custodial institution is located. Note that both the numbers and rates of recorded criminal incidents in 1999 and 2000 have been updated since the previous edition. The Statistical Subdivisions in Sydney in this report differ from previous reports, in keeping with ABS changes to boundaries. Details are shown in Appendix 3.

**OVERVIEW OF MAJOR TRENDS,
2000 AND 2001
NEW SOUTH WALES**

OVERVIEW OF MAJOR TRENDS

TRENDS IN RECORDED CRIME

However trends in recorded crime are presented, their interpretation is a difficult task. The recorded criminal incident data presented in this report are based on information derived from the NSW Police Service Computerised Operational Policing System, so only those incidents which are reported to, or detected by, police are included. The trends in recorded crime shown in this report will, therefore, reflect movements in the underlying factors which influence the detection, reporting and recording of crime, as well as changes in the true level of crime in the community.

An alternative measure of the level of crime in NSW is available from crime victim surveys, for example the *Crime and Safety Survey* which is conducted annually by the Australian Bureau of Statistics (ABS).¹ As well as providing an estimate of the victimisation rate in the community for a selected set of offences, this survey measures the proportion of crimes which are not reported to police, and are therefore not recorded in the official statistics. In particular, personal crimes, such as assault and robbery, are less likely to be reported than crimes which involve households. For example, *Crime and Safety, New South Wales, 2001* shows that, in the twelve-month period to April 2001, while 95 per cent of motor vehicle thefts and 73 per cent of break and enter offences (crimes against 'households') were reported to police, only 30 per cent of all alleged assault offences were reported during that period. Given that some offences have low reporting rates, it is possible that changes in recorded crime rates over time for these offences largely reflect changes in reporting rates.

Public willingness to report crime, however, is just one of the extraneous factors which can affect trends in recorded crime. Shifts in policing policy can also have a marked effect on the number of recorded drug offences, drink driving offences, cases of offensive behaviour or of receiving stolen goods. For these offences, therefore, recorded rates probably do not accurately reflect actual rates. For this reason, the more detailed comparisons of crime rates and examination of trends in this document are restricted to categories of offence which are reported to, rather than detected by, police.

The interpretation of trends in official reports of crime can be considerably more difficult than the interpretation of trends in unemployment or inflation statistics. The ease with which recorded crime statistics can be misunderstood creates a temptation to offer an authoritative explanation for each major crime trend. Indeed, in many instances it is simply impossible to state with any assurance why a particular trend has appeared. This report, therefore, confines itself to identifying and describing trends in recorded crime, rather than explaining them.

The trends examined in this overview cover a twenty-four month period, from January 2000 to December 2001. For comparative purposes, statistics for 1999 have been included in the detailed tables in the sections which follow. For some offence categories, separate trends have been presented for various offence subcategories; in particular, sexual offences, robbery, break and enter, and stealing offences have been further disaggregated.

For each offence category or subcategory except murder, a statistical test for trend was applied to the monthly numbers of recorded criminal incidents over the twenty-four month period from January 2000 to December 2001.² In the case of murder, the statistical test for trend was applied to the monthly numbers of victims over the same period. For those offences where a statistically significant trend was found, the extent of the trend is indicated by the percentage change between the total recorded number of incidents for the twelve months of January to December 2000 and the total recorded number of incidents for the same period in 2001.

SUMMARY OF TRENDS

In the following summary the bracketed figures denote the percentage change in the total number of recorded criminal incidents between the consecutive twelve-month periods January to December 2000 and January to December 2001.

Significant downward trends

There was a statistically significant downward trend in the monthly numbers of recorded criminal incidents for the following offences:

- indecent assault, act of indecency, other sexual offences (down by 6.0%, see Figure 3)
- break and enter – dwelling (down by 3.2%, see Figure 5).

Offences where there was no upward or downward trend

There was no statistically significant generally upward or downward trend in the monthly numbers of recorded criminal incidents³ for any of the following offences:

- murder (see Figure 1)
- sexual assault (see Figure 3)
- robbery with a weapon not a firearm (see Figure 4)
- robbery without a weapon (see Figure 4)
- break and enter – non-dwelling (see Figure 5)
- motor vehicle theft (see Figure 6)
- steal from motor vehicle (see Figure 6)
- steal from retail store (see Figure 7)
- steal from dwelling (see Figure 7)
- malicious damage to property (see Figure 9).

Significant upward trends

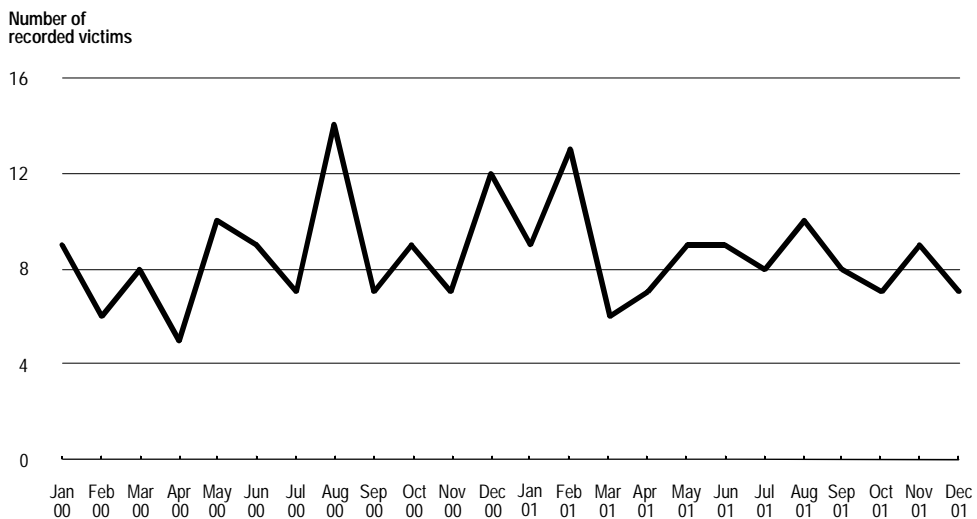
There was a statistically significant upward trend in the monthly numbers of recorded criminal incidents for the following offences:

- assault (up by 7.6%, see Figure 2)
- robbery with a firearm (up by 34.1%, see Figure 4)
- steal from person (up by 27.8%, see Figure 7)
- fraud (up by 16.3%, see Figure 8).

DESCRIPTION OF TRENDS

Graphs in this section show monthly trends for a selected set of offences in NSW, between January 2000 and December 2001. For each offence category, information is given on the statistical significance of any trend shown in the graphs, and the annual rate of offences per 100,000 resident population. In addition, geographical areas with the three highest rates, and the three lowest rates of recorded criminal incidents in NSW are listed. Within the Sydney Statistical Division, recorded crime rates are detailed by Statistical Subdivision (SSD). Outside the Sydney Statistical Division, recorded crime rates are detailed by Statistical Division (SD). The rate calculations are based on resident population data and are calculated as recorded offences per 100,000 population in each Statistical Division or Subdivision.⁴ It should be noted that the Inner Sydney Statistical Subdivision has high recorded crime rates because, compared with other regions, the resident population is small relative to the 'transient' or non-resident population which uses the area for business, entertainment, shopping, etc. That is, the high transient population is not reflected in the rate calculation.

Figure 1: Murder

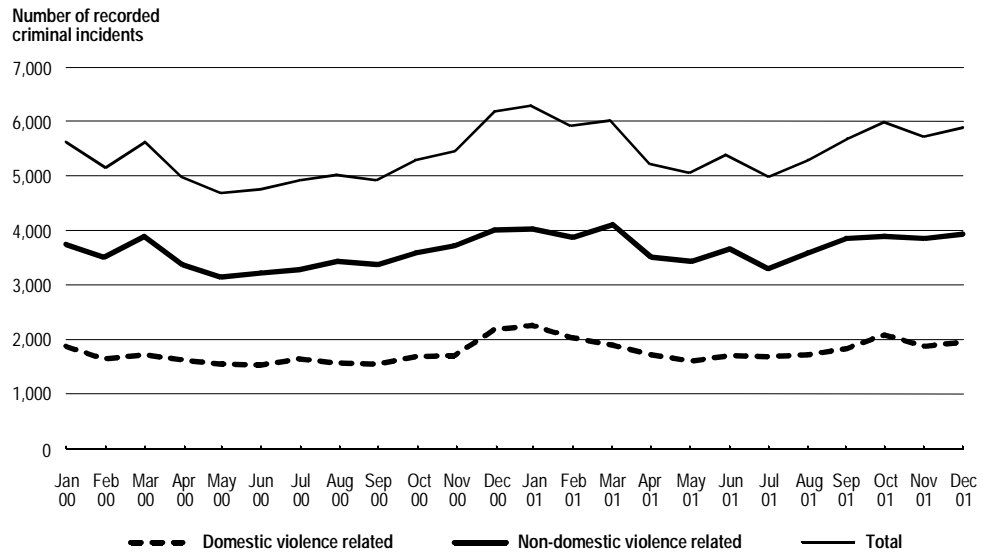


Murder

With such small numbers of murder victims, the month to month variation is extremely marked. For this reason it is difficult to detect trends over such a short period. Because of the small numbers of murder victims, it is not sensible to make regional comparisons.

Trend (Jan 2000 - Dec 2001): No statistically significant upward or downward trend.

NSW annual rate (2001): 1.6 per 100,000 population

Figure 2: Assault

Assault

Total assaults

Trend (Jan 2000 - Dec 2001): A statistically significant upward trend (up by 7.6%).

NSW annual rate (2001): 1,034.8 per 100,000 population

Highest rates: Far West SD - 2,888.3 per 100,000 population
 North Western SD - 2,269.8 per 100,000 population
 Inner Sydney SSD - 2,267.0 per 100,000 population

Lowest rates: Central Northern Sydney SSD - 293.1 per 100,000 population
 Lower Northern Sydney SSD - 432.2 per 100,000 population
 Northern Beaches SSD - 487.3 per 100,000 population

Non-domestic assault

Trend (Jan 2000 - Dec 2001): A statistically significant upward trend (up by 6.4%).

NSW annual rate (2001): 691.0 per 100,000 population

Highest rates: Inner Sydney SSD - 1,898.3 per 100,000 population
 Far West SD - 1,599.3 per 100,000 population
 North Western SD - 1,389.5 per 100,000 population

Lowest rates: Central Northern Sydney SSD - 192.4 per 100,000 population
 Lower Northern Sydney SSD - 323.1 per 100,000 population
 Northern Beaches SSD - 328.4 per 100,000 population

Domestic assault

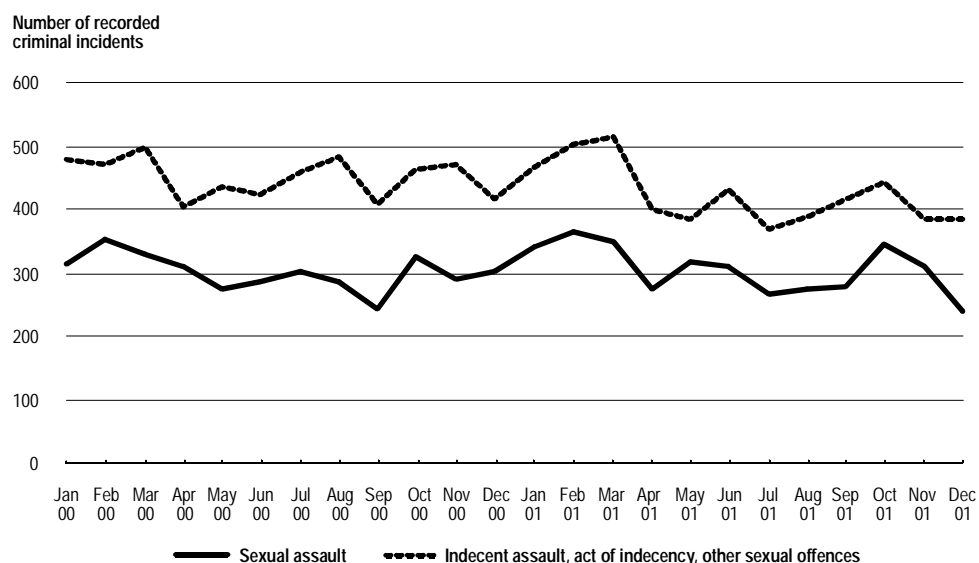
Trend (Jan 2000 - Dec 2001): A statistically significant upward trend (up by 10.2%).

NSW annual rate (2001): 343.9 per 100,000 population

Highest rates: Far West SD - 1,289.0 per 100,000 population
 North Western SD - 880.3 per 100,000 population
 Murrumbidgee SD - 616.2 per 100,000 population

Lowest rates: Central Northern Sydney SSD - 100.7 per 100,000 population
 Lower Northern Sydney SSD - 109.1 per 100,000 population
 Inner Western Sydney SSD - 158.2 per 100,000 population

Figure 3: Sexual assault and indecent assault, act of indecency, other sexual offences



Sexual offences

Sexual assault

Trend (Jan 2000 - Dec 2001): No statistically significant upward or downward trend.

NSW annual rate (2001): 56.2 per 100,000 population

Highest rates: Far West SD - 112.1 per 100,000 population
 North Western SD - 109.9 per 100,000 population
 Murray SD - 105.3 per 100,000 population

Lowest rates: Central Northern Sydney SSD - 20.0 per 100,000 population
 Lower Northern Sydney SSD - 26.0 per 100,000 population
 St George – Sutherland SSD - 27.5 per 100,000 population

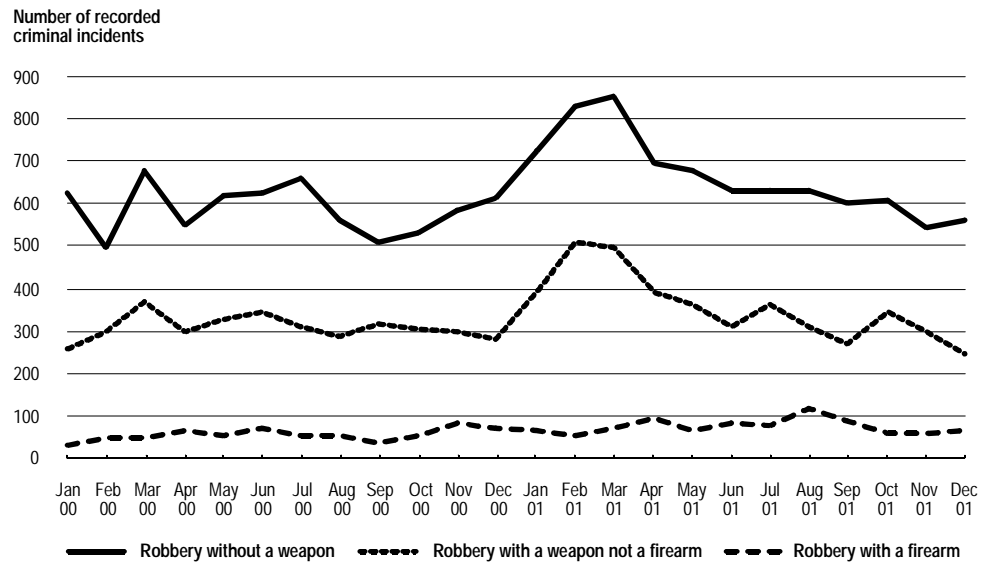
Indecent assault, act of indecency, other sexual offences

Trend (Jan 2000 - Dec 2001): A statistically significant downward trend (down by 6.0%).

NSW annual rate (2001): 77.8 per 100,000 population

Highest rates: Far West SD - 137.9 per 100,000 population
 Northern SD - 132.4 per 100,000 population
 North Western SD - 125.4 per 100,000 population

Lowest rates: Central Northern Sydney SSD - 34.3 per 100,000 population
 Eastern Suburbs SSD - 42.4 per 100,000 population
 Canterbury – Bankstown SSD - 47.1 per 100,000 population

Figure 4: Robbery with and without a weapon

Robbery

Robbery without a weapon

Trend (Jan 2000 - Dec 2001): No statistically significant upward or downward trend.

NSW annual rate (2001): 122.3 per 100,000 population

Highest rates: Inner Sydney SSD - 778.4 per 100,000 population
 Inner Western Sydney SSD - 248.2 per 100,000 population
 Central Western Sydney SSD - 200.5 per 100,000 population

Lowest rates: South Eastern SD - 16.8 per 100,000 population
 Murray SD - 17.3 per 100,000 population
 Murrumbidgee SD - 25.5 per 100,000 population

Robbery with a firearm

Trend (Jan 2000 - Dec 2001): A statistically significant upward trend (up by 34.1%).

NSW annual rate (2001): 13.5 per 100,000 population

Highest rates: Inner Sydney SSD - 43.4 per 100,000 population
 Canterbury – Bankstown SSD - 40.1 per 100,000 population
 Central Western Sydney SSD - 36.3 per 100,000 population

Lowest rates: North Western SD - 0.9 per 100,000 population
 No robberies with firearms were recorded in the following SDs:
 Central West, Far West, Murray, Murrumbidgee and Northern.

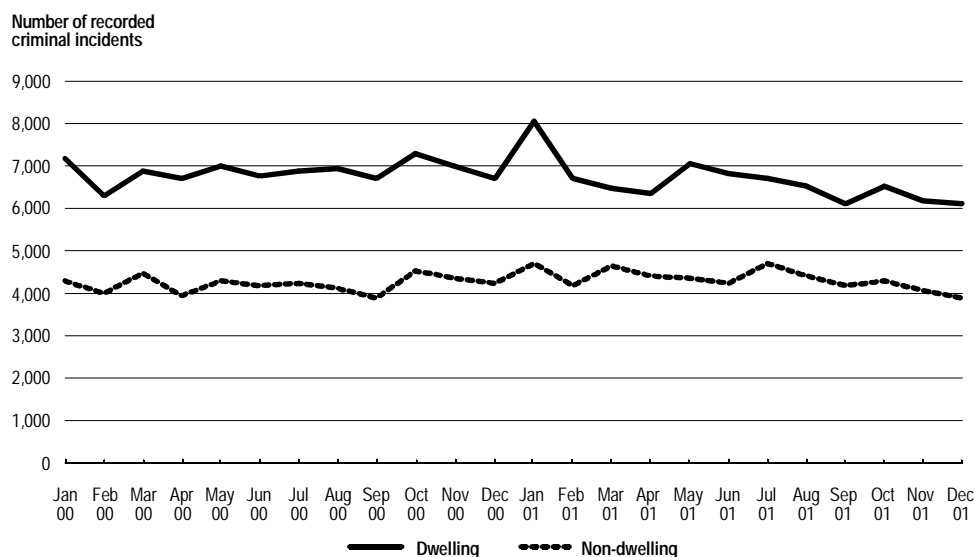
Robbery with a weapon not a firearm

Trend (Jan 2000 - Dec 2001): No statistically significant upward or downward trend.

NSW annual rate (2001): 65.7 per 100,000 population

Highest rates: Inner Sydney SSD - 385.6 per 100,000 population
 Inner Western Sydney SSD - 141.1 per 100,000 population
 Fairfield – Liverpool SSD - 138.5 per 100,000 population

Lowest rates: Far West SD - 4.3 per 100,000 population
 Richmond – Tweed SD - 7.5 per 100,000 population
 Central West SD - 8.1 per 100,000 population

Figure 5: Break and enter dwelling and non-dwelling

Break and enter

Break and enter - dwelling

Trend (Jan 2000 - Dec 2001): A statistically significant downward trend (down by 3.2%).

NSW annual rate (2001): 1,221.6 per 100,000 population

Highest rates: Inner Sydney SSD - 2,166.6 per 100,000 population
 North Western SD - 1,839.5 per 100,000 population
 Eastern Suburbs SSD - 1,754.4 per 100,000 population

Lowest rates: Central Northern Sydney SSD - 758.3 per 100,000 population
 Richmond – Tweed SD - 780.1 per 100,000 population
 South Eastern SD - 789.4 per 100,000 population

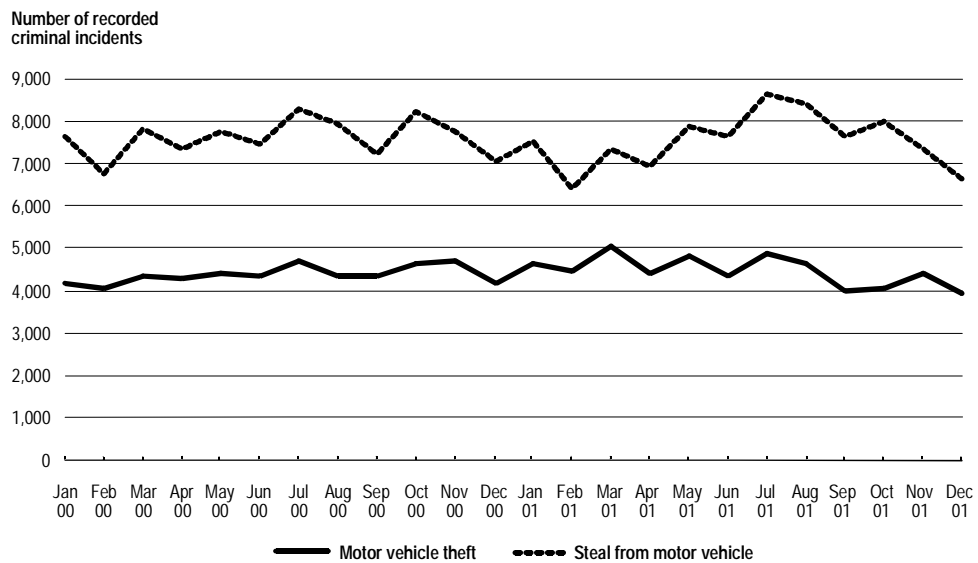
Break and enter - non-dwelling

Trend (Jan 2001 - Dec 2001): No statistically significant upward or downward trend.

NSW annual rate (2001): 796.9 per 100,000 population

Highest rates: Inner Sydney SSD - 1,793.5 per 100,000 population
 North Western SD - 1,247.0 per 100,000 population
 Illawarra SD - 1,040.5 per 100,000 population

Lowest rates: Central Northern Sydney SSD - 426.9 per 100,000 population
 Northern Beaches SSD - 437.7 per 100,000 population
 St George – Sutherland SSD - 437.8 per 100,000 population

Figure 6: Motor vehicle theft and steal from motor vehicle

Motor vehicle theft and steal from motor vehicle

Motor vehicle theft

Trend (Jan 2000 - Dec 2001): No statistically significant upward or downward trend.

NSW annual rate (2001): 822.5 per 100,000 population

Highest rates: Inner Sydney SSD - 1,749.1 per 100,000 population
 Central Western Sydney SSD - 1,339.4 per 100,000 population
 Canterbury – Bankstown SSD - 1,272.0 per 100,000 population

Lowest rates: Northern SD - 235.1 per 100,000 population
 Central West SD - 274.2 per 100,000 population
 South Eastern SD - 281.4 per 100,000 population

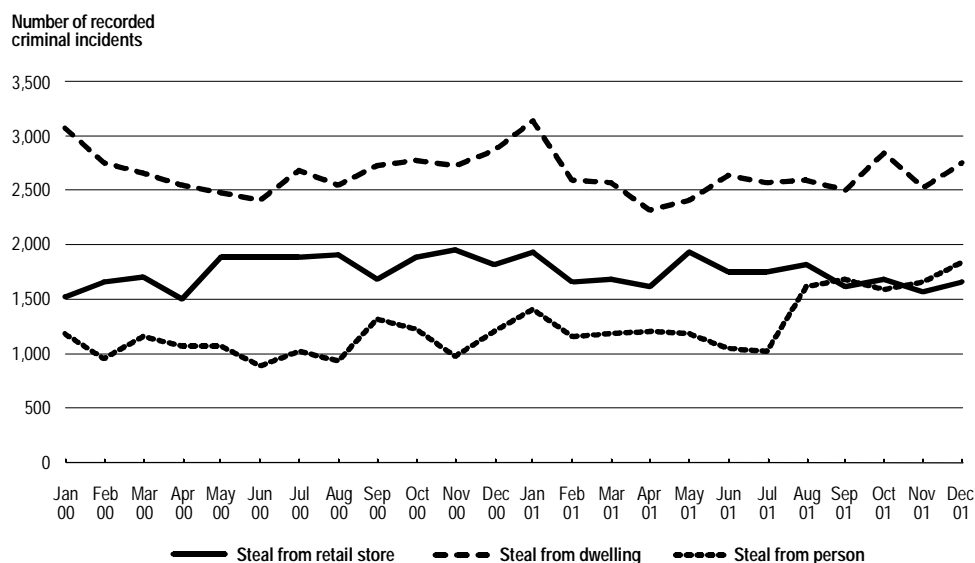
Steal from motor vehicle

Trend (Jan 2000 - Dec 2001): No statistically significant upward or downward trend.

NSW annual rate (2001): 1,384.9 per 100,000 population

Highest rates: Inner Sydney SSD - 5,241.2 per 100,000 population
 Eastern Suburbs SSD - 1,819.9 per 100,000 population
 North Western SD - 1,800.0 per 100,000 population

Lowest rates: South Eastern SD - 739.5 per 100,000 population
 Mid-North Coast SD - 781.9 per 100,000 population
 Central Northern Sydney SSD - 790.2 per 100,000 population

Figure 7: Steal from retail store, from dwelling and from person

Stealing

Steal from retail store

Trend (Jan 2000 - Dec 2001): No statistically significant upward or downward trend.

NSW annual rate (2001): 316.1 per 100,000 population

Highest rates: Inner Sydney SSD - 799.1 per 100,000 population
 Central Western Sydney SSD - 446.0 per 100,000 population
 Blacktown SSD - 370.5 per 100,000 population

Lowest rates: Central Northern Sydney SSD - 129.4 per 100,000 population
 Northern Beaches SSD - 177.1 per 100,000 population
 South Eastern SD - 257.5 per 100,000 population

Steal from dwelling

Trend (Jan 2000 - Dec 2001): No statistically significant upward or downward trend.

NSW annual rate (2001): 481.5 per 100,000 population

Highest rates: Far West SD - 1,082.0 per 100,000 population
 Inner Sydney SSD - 794.7 per 100,000 population
 North Western SD - 773.8 per 100,000 population

Lowest rates: Canterbury – Bankstown SSD - 248.2 per 100,000 population
 Fairfield – Liverpool SSD - 281.1 per 100,000 population
 St George – Sutherland SSD - 287.2 per 100,000 population

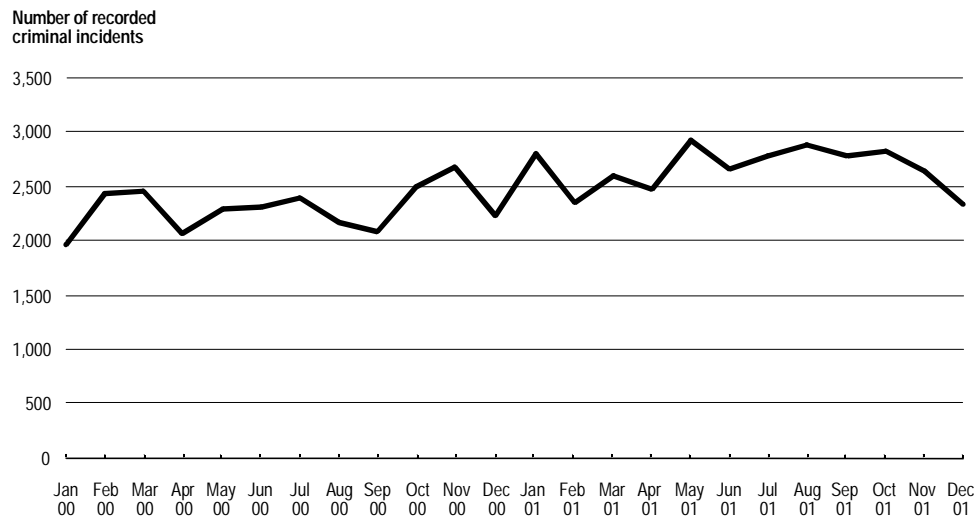
Steal from person

Trend (Jan 2000 - Dec 2001): A statistically significant upward trend (up by 27.8%).

NSW annual rate (2001): 253.7 per 100,000 population

Highest rates: Inner Sydney SSD - 2,247.7 per 100,000 population
 Inner Western Sydney SSD - 391.2 per 100,000 population
 Eastern Suburbs SSD - 360.9 per 100,000 population

Lowest rates: Murray SD - 49.9 per 100,000 population
 Central West SD - 51.9 per 100,000 population
 Murrumbidgee SD - 57.1 per 100,000 population

Figure 8: Fraud

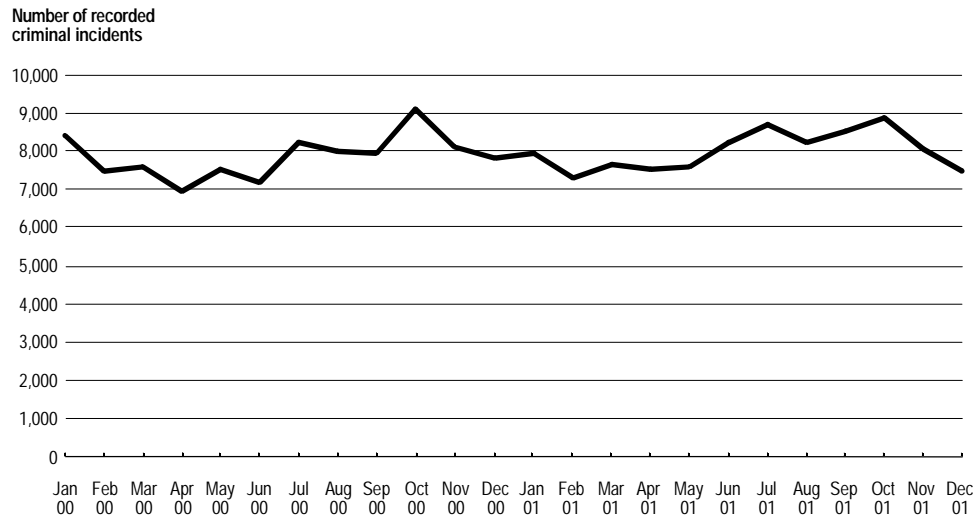
Fraud

Trend (Jan 2000 - Dec 2001): A statistically significant upward trend (up by 16.3%).

NSW annual rate (2001): 491.4 per 100,000 population

Highest rates: Inner Sydney SSD - 1,529.0 per 100,000 population
 Central Western Sydney SSD - 789.3 per 100,000 population
 Canterbury – Bankstown SSD - 732.0 per 100,000 population

Lowest rates: Central Northern Sydney SSD - 209.4 per 100,000 population
 Far West SD - 215.5 per 100,000 population
 Northern SD - 232.8 per 100,000 population

Figure 9: Malicious damage to property

Malicious damage to property

Trend (Jan 2000 - Dec 2001): No statistically significant upward or downward trend.

NSW annual rate (2001): 1,471.8 per 100,000 population

Highest rates: North Western SD - 2,681.2 per 100,000 population
 Far West SD - 2,595.2 per 100,000 population
 Inner Sydney SSD - 2,126.9 per 100,000 population

Lowest rates: Central Northern Sydney SSD - 827.4 per 100,000 population
 Inner Western Sydney SSD - 853.0 per 100,000 population
 Lower Northern Sydney SSD - 944.3 per 100,000 population

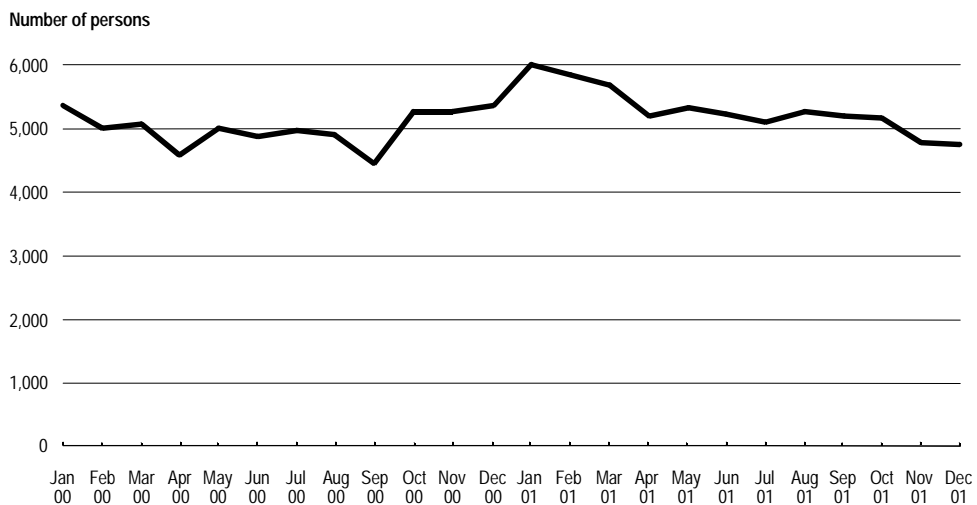
TRENDS IN METHODS OF PROCEEDING AGAINST OFFENDERS OR ALLEGED OFFENDERS

The information which follows highlights trends in the numbers of persons proceeded against by charge, Court Attendance Notice, summons and Field Court Attendance Notice.

Charge

Trend (Jan 2000 - Dec 2001): No statistically significant upward or downward trend.

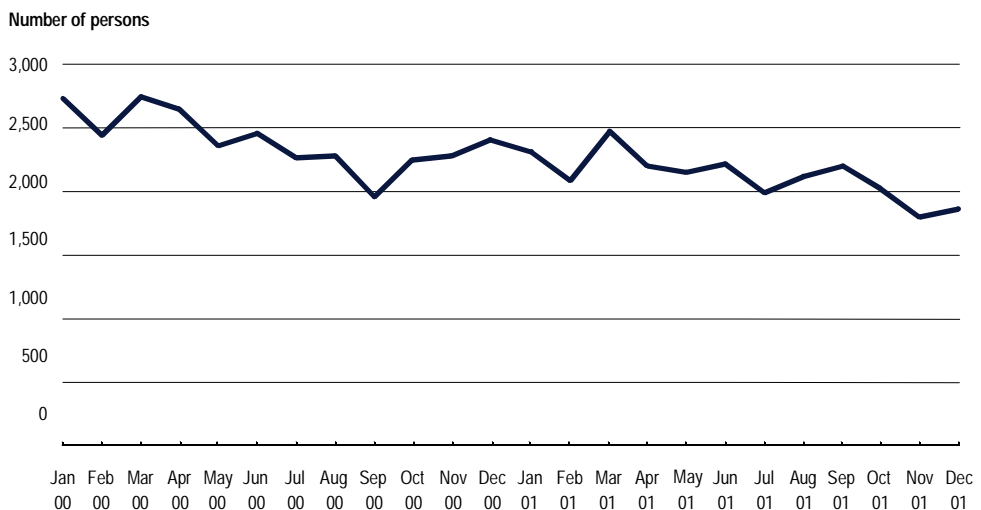
Figure 10: Persons charged



Court Attendance Notice

Trend (Jan 2000 - Dec 2001): A statistically significant downward trend (down by 11.8%).

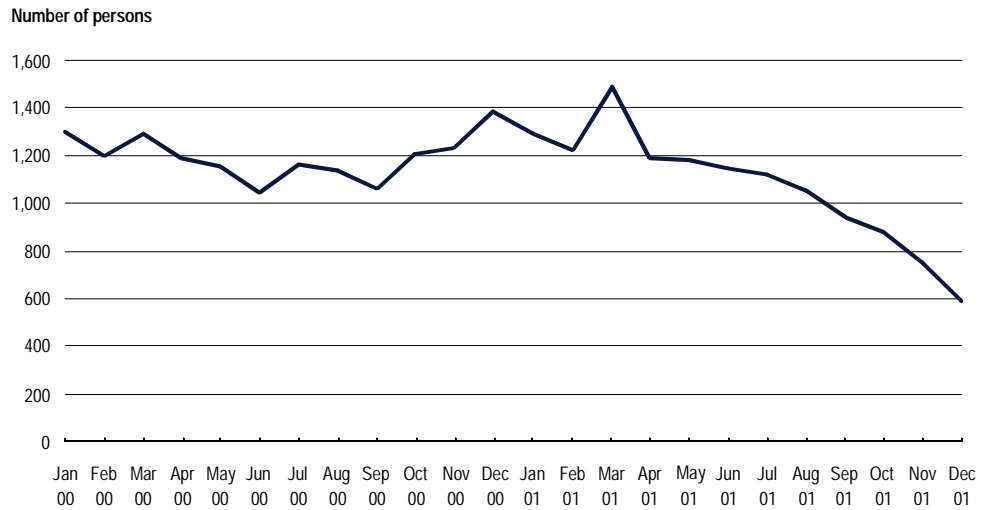
Figure 11: Persons issued with Court Attendance Notice



Summons

Trend (Jan 2000 - Dec 2001): A statistically significant downward trend (down by 10.7%).

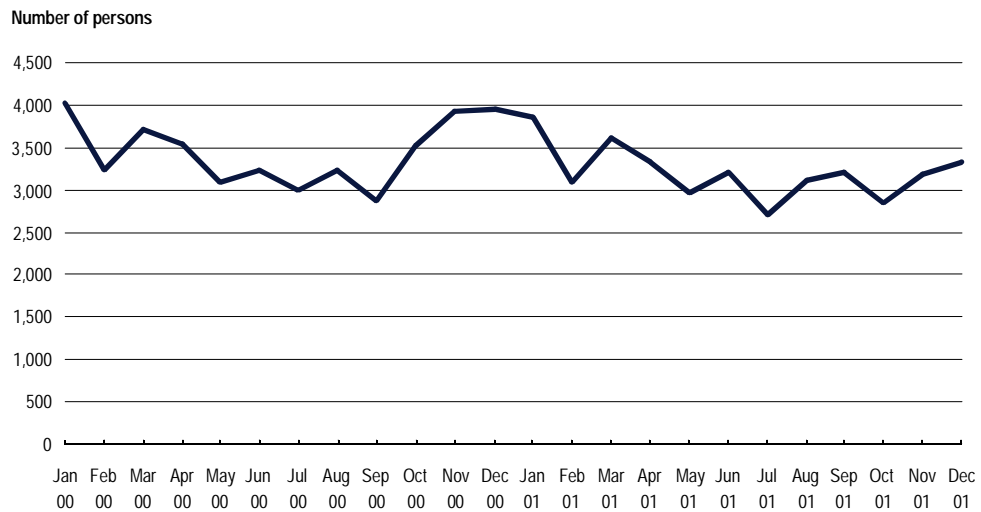
Figure 12: Persons issued with summons



Field Court Attendance Notice

Trend (Jan 2000 - Dec 2001): No statistically significant upward or downward trend.

Figure 13: Persons issued with Field Court Attendance Notice



NOTES

- 1 Australian Bureau of Statistics 2001, *Crime and Safety, New South Wales, April 2001*, Cat. No. 4509.1, ABS, Sydney.
- 2 The trend test used was Kendall's rank-order correlation test (see, for example, Conover, W.J. 1980, *Practical Non-Parametric Statistics*, 2nd edn, John Wiley and Sons, pp. 256-260). A two-tailed test was used to determine whether there had been an increasing or decreasing trend in the recorded numbers of criminal incidents over the most recent twenty-four month period covered in the report. Some month to month variations in the numbers of recorded incidents could be due in part to seasonal factors. The test for trend is not sensitive to seasonal variations; it is sensitive only to a generally increasing or generally decreasing trend over the time period examined.
- 3 In the case of murder, there was no statistically significant trend in the monthly numbers of recorded victims.
- 4 For the rate calculations, population data were obtained from the Australian Bureau of Statistics publications: *Regional Population Growth, Australia, 20 Feb 2000*, Cat. No. 3218.0 (for 1999 population estimates), and *Regional Population Growth, Australia, 19 Feb 2001*, Cat. No. 3218.1 (for 2000 and 2001 population estimates).

**MONTHLY TRENDS IN
RECORDED CRIMINAL INCIDENTS,
1999, 2000 AND 2001
NEW SOUTH WALES**

**TABLE 1.1 MONTHLY TRENDS IN RECORDED CRIMINAL INCIDENTS, 1999, NEW SOUTH WALES:
TYPE OF OFFENCE**

| Type of offence | Recorded criminal incidents | | | | | | | | | | | | Total 1999 | |
|--|-----------------------------|-------|-------|-------|-------|-------|-------|-------|-------|-------|-------|-------|------------|-----------------------------|
| | Jan | Feb | Mar | Apr | May | Jun | Jul | Aug | Sep | Oct | Nov | Dec | No. | Rate per 100,000 population |
| | Homicide: | | | | | | | | | | | | | |
| Murder* | 7 | 8 | 16 | 8 | 16 | 11 | 7 | 12 | 7 | 10 | 7 | 14 | 123 | 1.9 |
| Attempted murder | 8 | 9 | 14 | 8 | 9 | 11 | 11 | 5 | 11 | 7 | 11 | 9 | 113 | 1.8 |
| Murder accessory, conspiracy | 1 | 3 | 1 | 1 | 1 | 1 | 3 | 0 | 0 | 0 | 2 | 0 | 13 | 0.2 |
| Manslaughter – not driving* | 1 | 2 | 0 | 0 | 2 | 0 | 1 | 0 | 0 | 1 | 0 | 2 | 9 | 0.1 |
| Manslaughter – driving* | 10 | 5 | 6 | 5 | 9 | 5 | 10 | 10 | 9 | 9 | 5 | 9 | 92 | 1.4 |
| Assault | 5,734 | 5,049 | 5,238 | 4,456 | 4,652 | 4,184 | 4,398 | 4,675 | 4,779 | 5,000 | 4,984 | 5,497 | 58,646 | 916.8 |
| Sexual offences: | | | | | | | | | | | | | | |
| Sexual assault | 302 | 311 | 311 | 230 | 240 | 304 | 244 | 231 | 239 | 226 | 290 | 273 | 3,201 | 50.0 |
| Indecent assault, act of indecency | 303 | 291 | 323 | 241 | 298 | 288 | 220 | 275 | 285 | 280 | 251 | 298 | 3,353 | 52.4 |
| Other sexual offences | 110 | 133 | 137 | 104 | 127 | 132 | 122 | 125 | 147 | 133 | 129 | 122 | 1,521 | 23.8 |
| Abduction and kidnapping | 34 | 36 | 39 | 27 | 29 | 32 | 29 | 31 | 26 | 46 | 33 | 39 | 401 | 6.3 |
| Robbery: | | | | | | | | | | | | | | |
| Robbery without a weapon | 549 | 547 | 574 | 572 | 532 | 485 | 470 | 523 | 518 | 565 | 566 | 561 | 6,462 | 101.0 |
| Robbery with a firearm | 68 | 65 | 57 | 59 | 67 | 54 | 63 | 70 | 51 | 34 | 55 | 54 | 697 | 10.9 |
| Robbery with a weapon not a firearm | 289 | 261 | 294 | 296 | 377 | 273 | 292 | 295 | 254 | 298 | 316 | 283 | 3,528 | 55.2 |
| Other offences against the person | 306 | 272 | 358 | 275 | 358 | 265 | 253 | 281 | 297 | 321 | 279 | 318 | 3,583 | 56.0 |

* For murder and manslaughter only, the data are counts of recorded victims, not criminal incidents. See Explanatory Notes.

| | | | | | | | | | | | | | | |
|-------------------------------------|-------|-------|-------|-------|-------|-------|-------|-------|-------|-------|-------|-------|--------|---------|
| Theft: | | | | | | | | | | | | | | |
| Break and enter – dwelling | 7,093 | 6,093 | 6,791 | 6,287 | 6,616 | 6,018 | 6,374 | 6,358 | 6,161 | 6,741 | 6,517 | 6,803 | 77,852 | 1,217.1 |
| Break and enter – non-dwelling | 3,489 | 3,447 | 3,807 | 3,452 | 3,968 | 3,978 | 3,866 | 4,014 | 3,941 | 4,028 | 4,075 | 3,930 | 45,995 | 719.0 |
| Possess implements | 143 | 147 | 140 | 111 | 139 | 120 | 107 | 147 | 112 | 141 | 136 | 121 | 1,564 | 24.5 |
| Receiving | 239 | 183 | 276 | 192 | 163 | 174 | 180 | 167 | 183 | 154 | 185 | 170 | 2,266 | 35.4 |
| Goods in custody | 789 | 844 | 917 | 761 | 799 | 818 | 795 | 777 | 760 | 741 | 860 | 707 | 9,568 | 149.6 |
| Motor vehicle theft | 3,948 | 3,829 | 3,946 | 3,792 | 3,981 | 3,678 | 4,046 | 3,956 | 4,260 | 4,439 | 4,267 | 4,259 | 48,401 | 756.7 |
| Steal from motor vehicle | 6,112 | 5,564 | 6,086 | 6,053 | 6,298 | 6,081 | 6,662 | 7,156 | 6,756 | 7,138 | 7,237 | 6,805 | 77,948 | 1,218.6 |
| Steal from retail store | 1,839 | 1,780 | 1,885 | 1,799 | 1,901 | 1,742 | 1,676 | 1,832 | 1,749 | 1,568 | 1,672 | 1,638 | 21,081 | 329.6 |
| Steal from dwelling | 2,674 | 2,294 | 2,608 | 2,409 | 2,498 | 2,270 | 2,437 | 2,563 | 2,622 | 2,601 | 2,723 | 2,722 | 30,421 | 475.6 |
| Steal from person | 1,007 | 995 | 1,114 | 967 | 990 | 837 | 871 | 949 | 933 | 943 | 921 | 1,065 | 11,592 | 181.2 |
| Stock theft | 58 | 69 | 77 | 77 | 82 | 53 | 70 | 70 | 60 | 60 | 69 | 45 | 790 | 12.4 |
| Fraud | 2,162 | 2,235 | 2,554 | 2,396 | 2,110 | 2,248 | 2,273 | 2,339 | 2,452 | 2,281 | 2,160 | 1,801 | 27,011 | 422.3 |
| Other theft | 5,145 | 4,769 | 5,426 | 4,743 | 5,256 | 5,277 | 5,497 | 5,638 | 5,773 | 5,730 | 5,909 | 5,900 | 65,063 | 1,017.1 |
| Demand money with menaces | 93 | 63 | 102 | 109 | 79 | 75 | 82 | 85 | 67 | 67 | 87 | 55 | 964 | 15.1 |
| Extortion, blackmail | 3 | 2 | 7 | 7 | 2 | 3 | 4 | 2 | 10 | 4 | 5 | 17 | 66 | 1.0 |
| Arson | 393 | 343 | 385 | 385 | 457 | 399 | 416 | 470 | 449 | 439 | 421 | 397 | 4,954 | 77.4 |
| Malicious damage to property | 7,737 | 6,926 | 7,721 | 7,273 | 7,738 | 7,183 | 7,432 | 8,184 | 7,936 | 8,496 | 8,158 | 7,480 | 92,264 | 1,442.4 |

Table continues on next page

TABLE 1.1 MONTHLY TRENDS IN RECORDED CRIMINAL INCIDENTS, 1999, NEW SOUTH WALES:
TYPE OF OFFENCE - continued

| Type of offence | Recorded criminal incidents | | | | | | | | | | | | Total 1999 | |
|--------------------------------------|-----------------------------|-----|-------|-------|-------|-------|-----|-----|-----|-----|-----|-----|------------|-----------------------------|
| | Jan | Feb | Mar | Apr | May | Jun | Jul | Aug | Sep | Oct | Nov | Dec | No. | Rate per 100,000 population |
| | Drug offences: | | | | | | | | | | | | | |
| Possession and/or use of cocaine | 21 | 15 | 20 | 33 | 14 | 8 | 17 | 15 | 20 | 14 | 11 | 12 | 200 | 3.1 |
| Possession and/or use of narcotics | 306 | 293 | 353 | 255 | 260 | 221 | 247 | 265 | 243 | 194 | 183 | 193 | 3,013 | 47.1 |
| Possession and/or use of cannabis | 967 | 977 | 1,110 | 1,110 | 1,194 | 1,029 | 899 | 849 | 920 | 813 | 832 | 794 | 11,494 | 179.7 |
| Possession and/or use of other drugs | 186 | 172 | 192 | 185 | 200 | 187 | 189 | 210 | 195 | 204 | 167 | 213 | 2,300 | 36.0 |
| Dealing, trafficking in cocaine | 12 | 46 | 12 | 8 | 16 | 18 | 6 | 15 | 30 | 9 | 6 | 27 | 205 | 3.2 |
| Dealing, trafficking in narcotics | 57 | 83 | 99 | 92 | 102 | 115 | 52 | 64 | 75 | 48 | 42 | 35 | 864 | 13.5 |
| Dealing, trafficking in cannabis | 76 | 56 | 128 | 104 | 91 | 101 | 92 | 80 | 77 | 63 | 64 | 57 | 989 | 15.5 |
| Dealing, trafficking in other drugs | 30 | 44 | 62 | 53 | 61 | 36 | 56 | 27 | 44 | 46 | 56 | 56 | 571 | 8.9 |
| Cultivating cannabis | 276 | 297 | 265 | 145 | 90 | 84 | 66 | 80 | 123 | 108 | 213 | 192 | 1,939 | 30.3 |
| Importing drugs | 0 | 3 | 1 | 4 | 5 | 6 | 3 | 0 | 1 | 0 | 1 | 8 | 32 | 0.5 |
| Other drug offences | 249 | 309 | 317 | 249 | 278 | 241 | 253 | 221 | 253 | 221 | 235 | 220 | 3,046 | 47.6 |
| Offensive behaviour: | | | | | | | | | | | | | | |
| Offensive conduct | 392 | 298 | 370 | 291 | 331 | 283 | 312 | 309 | 303 | 332 | 308 | 338 | 3,867 | 60.5 |
| Offensive language | 731 | 637 | 731 | 637 | 613 | 492 | 545 | 552 | 499 | 499 | 459 | 497 | 6,892 | 107.7 |
| Prostitution offences | | | | | | | | | | | | | | |
| | 38 | 13 | 51 | 33 | 44 | 51 | 27 | 33 | 33 | 41 | 21 | 14 | 399 | 6.2 |
| Betting and gaming offences | | | | | | | | | | | | | | |
| | 1 | 1 | 2 | 1 | 0 | 3 | 1 | 1 | 1 | 1 | 1 | 0 | 13 | 0.2 |
| Weapons offences | | | | | | | | | | | | | | |
| | 794 | 751 | 850 | 833 | 907 | 790 | 781 | 789 | 742 | 715 | 741 | 677 | 9,370 | 146.5 |

| Against justice procedures: | | | | | | | | | | | | | | |
|---|--------------|--------------|--------------|--------------|--------------|--------------|--------------|--------------|--------------|--------------|--------------|--------------|---------------|--------------|
| Escapee – Corrective Services custody | 8 | 3 | 14 | 9 | 6 | 8 | 9 | 7 | 9 | 9 | 10 | 11 | 103 | 1.6 |
| Escapee – Police custody | 27 | 20 | 18 | 21 | 18 | 12 | 24 | 24 | 23 | 25 | 15 | 30 | 257 | 4.0 |
| Escapee – juvenile detention | 0 | 0 | 0 | 0 | 1 | 0 | 0 | 0 | 1 | 0 | 0 | 0 | 2 | 0.0 |
| Escapee – other custody | 6 | 11 | 6 | 3 | 10 | 2 | 2 | 1 | 5 | 5 | 6 | 8 | 65 | 1.0 |
| Breach Apprehended Violence Order | 948 | 826 | 880 | 718 | 774 | 758 | 738 | 739 | 761 | 784 | 825 | 888 | 9,639 | 150.7 |
| Breach bail conditions | 368 | 325 | 403 | 362 | 370 | 367 | 365 | 383 | 410 | 441 | 348 | 361 | 4,503 | 70.4 |
| Breach of recognizance | 37 | 48 | 56 | 52 | 39 | 39 | 49 | 70 | 58 | 50 | 49 | 50 | 597 | 9.3 |
| Fail to appear | 127 | 119 | 131 | 141 | 119 | 149 | 154 | 128 | 127 | 143 | 127 | 106 | 1,571 | 24.6 |
| Other offences against justice procedures | 673 | 568 | 605 | 553 | 533 | 530 | 597 | 604 | 522 | 541 | 539 | 535 | 6,800 | 106.3 |
| Driving offences: | | | | | | | | | | | | | | |
| Culpable driving | 23 | 20 | 15 | 20 | 17 | 13 | 16 | 21 | 13 | 18 | 11 | 12 | 199 | 3.1 |
| PCA | 1,988 | 1,655 | 2,035 | 1,948 | 2,024 | 1,921 | 1,912 | 1,892 | 1,731 | 1,874 | 1,993 | 2,055 | 23,028 | 360.0 |
| Drive while disqualified | 1,350 | 1,127 | 1,245 | 1,271 | 1,288 | 1,265 | 1,290 | 1,443 | 1,377 | 1,490 | 1,531 | 1,568 | 16,245 | 254.0 |
| Drive manner/speed dangerous | 220 | 204 | 212 | 207 | 245 | 219 | 203 | 227 | 210 | 249 | 236 | 261 | 2,693 | 42.1 |
| Other driving offences | 2,905 | 2,599 | 2,809 | 2,956 | 3,085 | 2,890 | 2,861 | 3,068 | 3,028 | 4,545 | 5,003 | 3,516 | 39,265 | 613.8 |
| Other offences | 3,029 | 2,791 | 2,952 | 2,820 | 3,166 | 3,026 | 3,188 | 3,276 | 3,424 | 3,383 | 3,244 | 3,444 | 37,743 | 590.0 |

**TABLE 1.2 MONTHLY TRENDS IN RECORDED CRIMINAL INCIDENTS, 2000, NEW SOUTH WALES:
TYPE OF OFFENCE**

| Type of offence | Recorded criminal incidents | | | | | | | | | | | | Total 2000 | |
|--|-----------------------------|-------|-------|-------|-------|-------|-------|-------|-------|-------|-------|-------|------------|-----------------------------|
| | Jan | Feb | Mar | Apr | May | Jun | Jul | Aug | Sep | Oct | Nov | Dec | No. | Rate per 100,000 population |
| | Homicide: | | | | | | | | | | | | | |
| Murder* | 9 | 6 | 8 | 5 | 10 | 9 | 7 | 14 | 7 | 9 | 7 | 12 | 103 | 1.6 |
| Attempted murder | 9 | 7 | 17 | 3 | 12 | 13 | 12 | 5 | 12 | 10 | 11 | 12 | 123 | 1.9 |
| Murder accessory, conspiracy | 0 | 0 | 2 | 0 | 2 | 0 | 0 | 2 | 0 | 0 | 0 | 1 | 7 | 0.1 |
| Manslaughter – not driving* | 2 | 1 | 0 | 3 | 0 | 1 | 2 | 1 | 0 | 0 | 2 | 1 | 13 | 0.2 |
| Manslaughter – driving* | 15 | 16 | 12 | 15 | 10 | 12 | 9 | 9 | 7 | 4 | 11 | 9 | 129 | 2.0 |
| Assault | 5,640 | 5,158 | 5,642 | 5,016 | 4,707 | 4,775 | 4,948 | 5,027 | 4,941 | 5,284 | 5,456 | 6,203 | 62,797 | 971.7 |
| Sexual offences: | | | | | | | | | | | | | | |
| Sexual assault | 315 | 352 | 330 | 309 | 275 | 286 | 303 | 285 | 242 | 325 | 291 | 302 | 3,615 | 55.9 |
| Indecent assault, act of indecency | 339 | 311 | 355 | 282 | 305 | 310 | 339 | 333 | 286 | 332 | 342 | 299 | 3,833 | 59.3 |
| Other sexual offences | 139 | 160 | 142 | 120 | 132 | 115 | 120 | 150 | 121 | 132 | 127 | 117 | 1,575 | 24.4 |
| Abduction and kidnapping | 36 | 23 | 37 | 28 | 28 | 28 | 27 | 50 | 38 | 24 | 30 | 21 | 370 | 5.7 |
| Robbery: | | | | | | | | | | | | | | |
| Robbery without a weapon | 623 | 497 | 678 | 550 | 618 | 627 | 662 | 563 | 511 | 531 | 586 | 614 | 7,060 | 109.2 |
| Robbery with a firearm | 31 | 48 | 45 | 63 | 55 | 73 | 51 | 54 | 33 | 53 | 80 | 70 | 656 | 10.2 |
| Robbery with a weapon not a firearm | 258 | 298 | 368 | 299 | 327 | 342 | 309 | 287 | 315 | 304 | 300 | 280 | 3,687 | 57.1 |
| Other offences against the person | 362 | 325 | 353 | 319 | 326 | 280 | 312 | 305 | 277 | 326 | 356 | 339 | 3,880 | 60.0 |

* For murder and manslaughter only, the data are counts of recorded victims, not criminal incidents. See Explanatory Notes.

| | | | | | | | | | | | | | | |
|-------------------------------------|-------|-------|-------|-------|-------|-------|-------|-------|-------|-------|-------|-------|--------|---------|
| Theft: | | | | | | | | | | | | | | |
| Break and enter – dwelling | 7,172 | 6,323 | 6,899 | 6,682 | 6,998 | 6,765 | 6,882 | 6,948 | 6,702 | 7,312 | 7,017 | 6,727 | 82,427 | 1,275.5 |
| Break and enter – non-dwelling | 4,276 | 3,991 | 4,473 | 3,912 | 4,271 | 4,153 | 4,252 | 4,131 | 3,881 | 4,520 | 4,380 | 4,230 | 50,470 | 781.0 |
| Possess implements | 152 | 121 | 130 | 113 | 157 | 142 | 156 | 168 | 129 | 157 | 163 | 145 | 1,733 | 26.8 |
| Receiving | 145 | 189 | 199 | 176 | 217 | 201 | 180 | 177 | 111 | 200 | 179 | 152 | 2,126 | 32.9 |
| Goods in custody | 845 | 738 | 894 | 759 | 925 | 837 | 857 | 843 | 631 | 860 | 846 | 794 | 9,829 | 152.1 |
| Motor vehicle theft | 4,191 | 4,086 | 4,369 | 4,273 | 4,384 | 4,381 | 4,698 | 4,374 | 4,324 | 4,658 | 4,705 | 4,183 | 52,626 | 814.3 |
| Steal from motor vehicle | 7,668 | 6,762 | 7,800 | 7,346 | 7,738 | 7,464 | 8,315 | 7,954 | 7,243 | 8,214 | 7,739 | 7,070 | 91,313 | 1,413.0 |
| Steal from retail store | 1,516 | 1,649 | 1,699 | 1,505 | 1,887 | 1,889 | 1,897 | 1,903 | 1,686 | 1,880 | 1,952 | 1,820 | 21,283 | 329.3 |
| Steal from dwelling | 3,071 | 2,748 | 2,661 | 2,552 | 2,486 | 2,417 | 2,690 | 2,549 | 2,734 | 2,779 | 2,737 | 2,855 | 32,279 | 499.5 |
| Steal from person | 1,189 | 947 | 1,157 | 1,058 | 1,060 | 882 | 1,022 | 943 | 1,326 | 1,217 | 970 | 1,201 | 12,972 | 200.7 |
| Stock theft | 58 | 60 | 51 | 62 | 68 | 86 | 82 | 59 | 50 | 74 | 58 | 49 | 757 | 11.7 |
| Fraud | 1,971 | 2,439 | 2,457 | 2,064 | 2,289 | 2,318 | 2,398 | 2,165 | 2,094 | 2,494 | 2,681 | 2,237 | 27,607 | 427.2 |
| Other theft | 6,426 | 6,300 | 6,393 | 5,691 | 6,049 | 5,793 | 5,984 | 5,984 | 6,293 | 6,669 | 6,139 | 6,140 | 73,861 | 1,142.9 |
| Demand money with menaces | 103 | 79 | 85 | 99 | 84 | 95 | 87 | 87 | 80 | 80 | 101 | 82 | 1,062 | 16.4 |
| Extortion, blackmail | 7 | 4 | 2 | 4 | 5 | 7 | 6 | 4 | 5 | 5 | 6 | 1 | 56 | 0.9 |
| Arson | 510 | 421 | 384 | 440 | 461 | 485 | 580 | 591 | 649 | 614 | 516 | 506 | 6,157 | 95.3 |
| Malicious damage to property | 8,446 | 7,493 | 7,629 | 6,956 | 7,571 | 7,205 | 8,273 | 7,983 | 7,936 | 9,131 | 8,114 | 7,827 | 94,564 | 1,463.3 |

Table continues on next page

**TABLE 1.2 MONTHLY TRENDS IN RECORDED CRIMINAL INCIDENTS, 2000, NEW SOUTH WALES:
TYPE OF OFFENCE - continued**

| <i>Type of offence</i> | <i>Recorded criminal incidents</i> | | | | | | | | | | | | <i>Total 2000</i> | |
|--------------------------------------|------------------------------------|------------|------------|------------|------------|------------|------------|------------|------------|------------|------------|------------|-------------------|--|
| | <i>Jan</i> | <i>Feb</i> | <i>Mar</i> | <i>Apr</i> | <i>May</i> | <i>Jun</i> | <i>Jul</i> | <i>Aug</i> | <i>Sep</i> | <i>Oct</i> | <i>Nov</i> | <i>Dec</i> | <i>No.</i> | <i>Rate per 100,000 population</i> |
| | Drug offences: | | | | | | | | | | | | | |
| Possession and/or use of cocaine | 23 | 11 | 21 | 10 | 11 | 20 | 14 | 19 | 18 | 21 | 21 | 19 | 208 | 3.2 |
| Possession and/or use of narcotics | 259 | 220 | 207 | 193 | 268 | 177 | 197 | 194 | 151 | 200 | 197 | 220 | 2,483 | 38.4 |
| Possession and/or use of cannabis | 967 | 909 | 961 | 970 | 1,024 | 1,006 | 855 | 926 | 777 | 872 | 903 | 899 | 11,069 | 171.3 |
| Possession and/or use of other drugs | 258 | 199 | 233 | 196 | 216 | 215 | 225 | 210 | 157 | 199 | 227 | 252 | 2,587 | 40.0 |
| Dealing, trafficking in cocaine | 9 | 6 | 13 | 4 | 3 | 3 | 11 | 23 | 9 | 10 | 5 | 4 | 100 | 1.5 |
| Dealing, trafficking in narcotics | 84 | 45 | 53 | 38 | 124 | 76 | 77 | 102 | 58 | 42 | 79 | 82 | 860 | 13.3 |
| Dealing, trafficking in cannabis | 65 | 78 | 63 | 69 | 67 | 105 | 79 | 75 | 71 | 66 | 73 | 70 | 881 | 13.6 |
| Dealing, trafficking in other drugs | 60 | 67 | 47 | 61 | 71 | 74 | 72 | 75 | 41 | 38 | 114 | 46 | 766 | 11.9 |
| Cultivating cannabis | 252 | 242 | 192 | 133 | 103 | 68 | 58 | 85 | 65 | 138 | 132 | 194 | 1,662 | 25.7 |
| Importing drugs | 0 | 2 | 7 | 4 | 2 | 2 | 0 | 0 | 2 | 1 | 4 | 3 | 27 | 0.4 |
| Other drug offences | 247 | 251 | 254 | 243 | 201 | 267 | 235 | 229 | 199 | 245 | 226 | 191 | 2,788 | 43.1 |
| Offensive behaviour: | | | | | | | | | | | | | | |
| Offensive conduct | 404 | 348 | 309 | 328 | 221 | 278 | 294 | 279 | 327 | 353 | 314 | 351 | 3,806 | 58.9 |
| Offensive language | 570 | 476 | 489 | 454 | 390 | 394 | 413 | 415 | 404 | 476 | 459 | 529 | 5,469 | 84.6 |
| Prostitution offences | | | | | | | | | | | | | | |
| | 23 | 53 | 34 | 30 | 59 | 39 | 36 | 37 | 20 | 28 | 40 | 25 | 424 | 6.6 |
| Betting and gaming offences | | | | | | | | | | | | | | |
| | 0 | 2 | 3 | 0 | 0 | 2 | 1 | 0 | 0 | 1 | 0 | 1 | 10 | 0.2 |
| Weapons offences | | | | | | | | | | | | | | |
| | 791 | 779 | 810 | 654 | 795 | 766 | 761 | 883 | 711 | 785 | 809 | 764 | 9,308 | 144.0 |

| Against justice procedures: | | | | | | | | | | | | | | |
|---|--------------|--------------|--------------|--------------|--------------|--------------|--------------|--------------|--------------|--------------|--------------|--------------|---------------|--------------|
| Escapee – Corrective Services custody | 5 | 7 | 7 | 11 | 11 | 7 | 11 | 6 | 10 | 6 | 4 | 10 | 95 | 1.5 |
| Escapee – Police custody | 24 | 19 | 22 | 18 | 21 | 20 | 15 | 16 | 14 | 15 | 14 | 23 | 221 | 3.4 |
| Escapee – juvenile detention | 0 | 0 | 0 | 0 | 0 | 0 | 0 | 1 | 0 | 0 | 0 | 0 | 1 | 0.0 |
| Escapee – other custody | 7 | 8 | 8 | 1 | 7 | 4 | 4 | 4 | 5 | 3 | 5 | 3 | 59 | 0.9 |
| Breach Apprehended Violence Order | 958 | 907 | 950 | 837 | 861 | 853 | 862 | 868 | 877 | 959 | 1,034 | 1,107 | 11,073 | 171.3 |
| Breach bail conditions | 511 | 416 | 430 | 350 | 366 | 395 | 385 | 365 | 385 | 396 | 503 | 445 | 4,947 | 76.5 |
| Breach of recognizance | 68 | 45 | 52 | 63 | 53 | 44 | 50 | 56 | 36 | 50 | 50 | 50 | 617 | 9.5 |
| Fail to appear | 135 | 138 | 149 | 132 | 146 | 147 | 156 | 153 | 122 | 118 | 169 | 142 | 1,707 | 26.4 |
| Other offences against justice procedures | 623 | 576 | 537 | 579 | 488 | 532 | 536 | 523 | 477 | 493 | 533 | 620 | 6,517 | 100.8 |
| Driving offences: | | | | | | | | | | | | | | |
| Culpable driving | 14 | 13 | 15 | 22 | 23 | 13 | 24 | 13 | 17 | 22 | 18 | 26 | 220 | 3.4 |
| PCA | 2,038 | 1,578 | 2,135 | 2,082 | 1,747 | 1,939 | 1,781 | 1,911 | 1,627 | 1,943 | 2,338 | 2,438 | 23,557 | 364.5 |
| Drive while disqualified | 1,547 | 1,274 | 1,452 | 1,478 | 1,397 | 1,354 | 1,262 | 1,381 | 1,202 | 1,534 | 1,671 | 1,828 | 17,380 | 268.9 |
| Drive manner/speed dangerous | 271 | 226 | 259 | 282 | 244 | 229 | 239 | 256 | 205 | 258 | 255 | 268 | 2,992 | 46.3 |
| Other driving offences* | 4,008 | 3,340 | 3,904 | 3,808 | 3,268 | 3,330 | 3,369 | 3,579 | 3,086 | 3,883 | 5,521 | 46,180 | 87,276 | 1,350.5 |
| Other offences | 3,811 | 3,678 | 3,666 | 3,592 | 3,577 | 3,887 | 3,872 | 3,763 | 3,435 | 3,984 | 4,139 | 4,265 | 45,669 | 706.6 |

* Since December 2000, police have included traffic infringement notices within this category.

**TABLE 1.3 MONTHLY TRENDS IN RECORDED CRIMINAL INCIDENTS, 2001, NEW SOUTH WALES:
TYPE OF OFFENCE**

| Type of offence | Recorded criminal incidents | | | | | | | | | | | | Total 2001 | |
|--|-----------------------------|-------|-------|-------|-------|-------|-------|-------|-------|-------|-------|-------|------------|-----------------------------|
| | Jan | Feb | Mar | Apr | May | Jun | Jul | Aug | Sep | Oct | Nov | Dec | No. | Rate per 100,000 population |
| | Homicide: | | | | | | | | | | | | | |
| Murder* | 9 | 13 | 6 | 7 | 10 | 9 | 8 | 10 | 9 | 7 | 8 | 7 | 103 | 1.6 |
| Attempted murder | 15 | 19 | 10 | 19 | 15 | 10 | 10 | 13 | 11 | 11 | 9 | 20 | 162 | 2.5 |
| Murder accessory, conspiracy | 0 | 0 | 1 | 0 | 1 | 0 | 2 | 0 | 0 | 1 | 1 | 0 | 6 | 0.1 |
| Manslaughter – not driving* | 0 | 1 | 0 | 4 | 0 | 0 | 0 | 1 | 1 | 1 | 0 | 0 | 8 | 0.1 |
| Manslaughter – driving* | 10 | 9 | 4 | 7 | 11 | 9 | 12 | 15 | 3 | 5 | 5 | 4 | 94 | 1.4 |
| Assault | 6,311 | 5,917 | 6,026 | 5,245 | 5,064 | 5,401 | 4,993 | 5,315 | 5,698 | 5,997 | 5,745 | 5,887 | 67,599 | 1,034.8 |
| Sexual offences: | | | | | | | | | | | | | | |
| Sexual assault | 341 | 365 | 350 | 276 | 318 | 310 | 266 | 275 | 277 | 345 | 311 | 240 | 3,674 | 56.2 |
| Indecent assault, act of indecency | 318 | 347 | 374 | 275 | 279 | 309 | 258 | 283 | 298 | 288 | 253 | 265 | 3,547 | 54.3 |
| Other sexual offences | 150 | 154 | 141 | 125 | 104 | 121 | 110 | 105 | 119 | 155 | 132 | 119 | 1,535 | 23.5 |
| Abduction and kidnapping | 42 | 40 | 37 | 30 | 39 | 34 | 39 | 42 | 35 | 58 | 33 | 29 | 458 | 7.0 |
| Robbery: | | | | | | | | | | | | | | |
| Robbery without a weapon | 725 | 827 | 854 | 693 | 680 | 634 | 631 | 631 | 604 | 607 | 544 | 560 | 7,990 | 122.3 |
| Robbery with a firearm | 67 | 51 | 68 | 93 | 63 | 82 | 74 | 114 | 85 | 60 | 58 | 65 | 880 | 13.5 |
| Robbery with a weapon not a firearm | 393 | 508 | 496 | 389 | 365 | 307 | 364 | 309 | 271 | 342 | 298 | 248 | 4,290 | 65.7 |
| Other offences against the person | 355 | 418 | 425 | 365 | 416 | 371 | 386 | 447 | 447 | 456 | 473 | 394 | 4,953 | 75.8 |

* For murder and manslaughter only, the data are counts of recorded victims, not criminal incidents. See Explanatory Notes.

| | | | | | | | | | | | | | | | |
|-------------------------------------|-------|-------|-------|-------|-------|-------|-------|-------|-------|-------|-------|-------|--------|---------|--|
| Theft: | | | | | | | | | | | | | | | |
| Break and enter – dwelling | 8,056 | 6,713 | 6,485 | 6,381 | 7,072 | 6,822 | 6,711 | 6,555 | 6,146 | 6,536 | 6,178 | 6,144 | 79,799 | 1,221.6 | |
| Break and enter – non-dwelling | 4,684 | 4,202 | 4,654 | 4,409 | 4,326 | 4,233 | 4,693 | 4,439 | 4,165 | 4,315 | 4,042 | 3,898 | 52,060 | 796.9 | |
| Possess implements | 174 | 185 | 157 | 160 | 175 | 199 | 195 | 195 | 137 | 154 | 140 | 154 | 2,025 | 31.0 | |
| Receiving | 292 | 224 | 192 | 187 | 144 | 165 | 132 | 127 | 129 | 102 | 112 | 49 | 1,855 | 28.4 | |
| Goods in custody | 1,027 | 919 | 837 | 764 | 811 | 779 | 789 | 787 | 710 | 700 | 697 | 617 | 9,437 | 144.5 | |
| Motor vehicle theft | 4,627 | 4,470 | 5,059 | 4,386 | 4,846 | 4,360 | 4,863 | 4,668 | 4,011 | 4,083 | 4,410 | 3,944 | 53,727 | 822.5 | |
| Steal from motor vehicle | 7,552 | 6,403 | 7,371 | 6,928 | 7,900 | 7,647 | 8,626 | 8,440 | 7,646 | 7,986 | 7,346 | 6,623 | 90,468 | 1,384.9 | |
| Steal from retail store | 1,923 | 1,664 | 1,672 | 1,603 | 1,931 | 1,760 | 1,760 | 1,808 | 1,617 | 1,682 | 1,563 | 1,665 | 20,648 | 316.1 | |
| Steal from dwelling | 3,131 | 2,588 | 2,575 | 2,316 | 2,410 | 2,630 | 2,564 | 2,593 | 2,511 | 2,844 | 2,531 | 2,758 | 31,451 | 481.5 | |
| Steal from person | 1,407 | 1,148 | 1,188 | 1,197 | 1,190 | 1,042 | 1,013 | 1,611 | 1,691 | 1,590 | 1,655 | 1,844 | 16,576 | 253.7 | |
| Stock theft | 72 | 71 | 73 | 77 | 109 | 70 | 62 | 105 | 85 | 75 | 62 | 64 | 925 | 14.2 | |
| Fraud | 2,814 | 2,364 | 2,600 | 2,472 | 2,934 | 2,663 | 2,787 | 2,892 | 2,784 | 2,815 | 2,640 | 2,333 | 32,098 | 491.4 | |
| Other theft | 6,967 | 6,080 | 6,428 | 6,147 | 6,263 | 5,907 | 5,862 | 5,523 | 4,981 | 5,423 | 5,221 | 4,879 | 69,681 | 1,066.7 | |
| Demand money with menaces | 82 | 75 | 120 | 71 | 97 | 93 | 81 | 75 | 84 | 64 | 66 | 56 | 964 | 14.8 | |
| Extortion, blackmail | 5 | 4 | 2 | 5 | 3 | 3 | 8 | 11 | 1 | 7 | 5 | 3 | 57 | 0.9 | |
| Arson | 598 | 450 | 534 | 528 | 590 | 664 | 736 | 673 | 618 | 766 | 594 | 559 | 7,310 | 111.9 | |
| Malicious damage to property | 7,936 | 7,285 | 7,650 | 7,523 | 7,581 | 8,239 | 8,685 | 8,241 | 8,523 | 8,897 | 8,073 | 7,512 | 96,145 | 1,471.8 | |

Table continues on next page

TABLE 1.3 MONTHLY TRENDS IN RECORDED CRIMINAL INCIDENTS, 2001, NEW SOUTH WALES:
TYPE OF OFFENCE - continued

| <i>Type of offence</i> | <i>Recorded criminal incidents</i> | | | | | | | | | | | | <i>Total 2001</i> | |
|--------------------------------------|------------------------------------|------------|------------|------------|------------|------------|------------|------------|------------|------------|------------|------------|-------------------|------------------------------------|
| | <i>Jan</i> | <i>Feb</i> | <i>Mar</i> | <i>Apr</i> | <i>May</i> | <i>Jun</i> | <i>Jul</i> | <i>Aug</i> | <i>Sep</i> | <i>Oct</i> | <i>Nov</i> | <i>Dec</i> | <i>No.</i> | <i>Rate per 100,000 population</i> |
| | Drug offences: | | | | | | | | | | | | | |
| Possession and/or use of cocaine | 26 | 36 | 64 | 46 | 34 | 39 | 36 | 45 | 32 | 51 | 21 | 30 | 460 | 7.0 |
| Possession and/or use of narcotics | 191 | 131 | 89 | 95 | 113 | 91 | 80 | 75 | 38 | 70 | 64 | 57 | 1,094 | 16.7 |
| Possession and/or use of cannabis | 921 | 1,122 | 1,289 | 1,077 | 1,579 | 1,441 | 1,134 | 1,327 | 1,313 | 1,204 | 943 | 978 | 14,328 | 219.3 |
| Possession and/or use of other drugs | 268 | 248 | 298 | 225 | 300 | 305 | 241 | 277 | 265 | 199 | 212 | 216 | 3,054 | 46.8 |
| Dealing, trafficking in cocaine | 4 | 12 | 30 | 19 | 28 | 23 | 21 | 22 | 26 | 37 | 13 | 11 | 246 | 3.8 |
| Dealing, trafficking in narcotics | 38 | 60 | 42 | 32 | 64 | 30 | 24 | 42 | 37 | 37 | 30 | 29 | 465 | 7.1 |
| Dealing, trafficking in cannabis | 82 | 82 | 113 | 76 | 112 | 78 | 81 | 103 | 64 | 78 | 62 | 56 | 987 | 15.1 |
| Dealing, trafficking in other drugs | 57 | 73 | 70 | 74 | 82 | 160 | 119 | 115 | 93 | 58 | 64 | 81 | 1,046 | 16.0 |
| Cultivating cannabis | 229 | 231 | 188 | 103 | 103 | 56 | 59 | 86 | 83 | 94 | 136 | 189 | 1,557 | 23.8 |
| Importing drugs | 1 | 3 | 3 | 2 | 3 | 0 | 3 | 2 | 1 | 2 | 1 | 2 | 23 | 0.4 |
| Other drug offences | 220 | 259 | 286 | 209 | 264 | 259 | 242 | 304 | 273 | 325 | 267 | 210 | 3,118 | 47.7 |
| Offensive behaviour: | | | | | | | | | | | | | | |
| Offensive conduct | 371 | 368 | 363 | 367 | 291 | 345 | 314 | 354 | 354 | 369 | 343 | 387 | 4,226 | 64.7 |
| Offensive language | 558 | 537 | 526 | 459 | 397 | 471 | 440 | 493 | 559 | 488 | 490 | 532 | 5,950 | 91.1 |
| Prostitution offences | | | | | | | | | | | | | | |
| | 17 | 101 | 152 | 107 | 54 | 123 | 43 | 86 | 52 | 42 | 49 | 50 | 876 | 13.4 |
| Betting and gaming offences | | | | | | | | | | | | | | |
| | 1 | 1 | 1 | 0 | 0 | 0 | 1 | 1 | 5 | 4 | 7 | 3 | 24 | 0.4 |
| Weapons offences | | | | | | | | | | | | | | |
| | 848 | 900 | 893 | 838 | 855 | 930 | 826 | 929 | 968 | 931 | 836 | 713 | 10,467 | 160.2 |

| | | | | | | | | | | | | | | |
|---|--------------|--------------|--------------|--------------|--------------|--------------|--------------|--------------|--------------|--------------|--------------|--------------|---------------|--------------|
| Against justice procedures: | | | | | | | | | | | | | | |
| Escapee – Corrective Services custody | 8 | 10 | 10 | 5 | 6 | 4 | 10 | 8 | 6 | 12 | 8 | 11 | 98 | 1.5 |
| Escapee – Police custody | 20 | 27 | 21 | 23 | 20 | 10 | 13 | 18 | 18 | 25 | 26 | 26 | 247 | 3.8 |
| Escapee – juvenile detention | 1 | 0 | 0 | 0 | 0 | 0 | 0 | 0 | 0 | 1 | 0 | 0 | 2 | 0.0 |
| Escapee – other custody | 3 | 3 | 6 | 8 | 3 | 3 | 2 | 8 | 5 | 4 | 3 | 1 | 49 | 0.8 |
| Breach Apprehended Violence Order | 1,099 | 1,022 | 1,038 | 957 | 993 | 869 | 899 | 918 | 937 | 1,068 | 951 | 944 | 11,695 | 179.0 |
| Breach bail conditions | 591 | 513 | 534 | 561 | 553 | 580 | 636 | 643 | 597 | 617 | 581 | 611 | 7,017 | 107.4 |
| Breach of recognizance | 42 | 24 | 36 | 37 | 27 | 30 | 22 | 30 | 30 | 30 | 35 | 26 | 369 | 5.6 |
| Fail to appear | 170 | 147 | 183 | 170 | 177 | 229 | 207 | 214 | 185 | 188 | 137 | 147 | 2,154 | 33.0 |
| Other offences against justice procedures | 652 | 572 | 605 | 519 | 524 | 526 | 446 | 676 | 705 | 641 | 575 | 655 | 7,096 | 108.6 |
| Driving offences: | | | | | | | | | | | | | | |
| Culpable driving | 20 | 14 | 13 | 18 | 17 | 21 | 22 | 19 | 6 | 0 | 7 | 2 | 159 | 2.4 |
| PCA | 2,088 | 1,740 | 2,408 | 2,010 | 1,734 | 1,995 | 1,682 | 1,875 | 2,118 | 1,755 | 2,086 | 2,081 | 23,572 | 360.8 |
| Drive while disqualified | 1,727 | 1,452 | 1,718 | 1,601 | 1,548 | 1,511 | 1,409 | 1,587 | 1,564 | 1,472 | 1,535 | 1,556 | 18,680 | 286.0 |
| Drive manner/speed dangerous | 268 | 250 | 296 | 219 | 235 | 247 | 195 | 271 | 267 | 245 | 236 | 260 | 2,989 | 45.8 |
| Other driving offences* | 51,210 | 32,057 | 38,843 | 46,475 | 37,846 | 40,123 | 36,442 | 43,414 | 48,428 | 42,573 | 38,901 | 50,626 | 506,938 | 7,760.3 |
| Other offences | 4,551 | 4,048 | 4,435 | 4,189 | 4,103 | 4,329 | 4,256 | 4,570 | 4,543 | 4,775 | 4,758 | 4,765 | 53,322 | 816.3 |

* Since December 2000, police have included traffic infringement notices within this category.

**MONTHLY TRENDS IN
METHODS OF PROCEEDING
AGAINST ALLEGED OFFENDERS,
1999, 2000 AND 2001
NEW SOUTH WALES**

**TABLE 2.1 MONTHLY TRENDS IN METHODS OF PROCEEDING AGAINST ALLEGED OFFENDERS, 1999,
NEW SOUTH WALES: TYPE OF PROCESS**

| <i>Type of process</i> | <i>Number of alleged offenders</i> | | | | | | | | | | | | <i>1999 Total</i> |
|---|------------------------------------|---------------|---------------|---------------|---------------|---------------|---------------|---------------|---------------|---------------|---------------|---------------|-----------------------|
| | <i>Jan</i> | <i>Feb</i> | <i>Mar</i> | <i>Apr</i> | <i>May</i> | <i>Jun</i> | <i>Jul</i> | <i>Aug</i> | <i>Sep</i> | <i>Oct</i> | <i>Nov</i> | <i>Dec</i> | |
| Proceeded against to court: | | | | | | | | | | | | | |
| Charged | 5,357 | 5,009 | 5,367 | 4,716 | 4,845 | 4,511 | 4,703 | 4,750 | 4,953 | 4,796 | 4,786 | 4,895 | 58,688 |
| Court Attendance Notice | 3,232 | 2,852 | 3,074 | 2,821 | 3,157 | 2,742 | 2,888 | 2,707 | 2,688 | 2,596 | 2,653 | 2,451 | 33,861 |
| Summons | 1,250 | 1,169 | 1,299 | 1,131 | 1,238 | 1,147 | 1,133 | 1,190 | 1,248 | 1,329 | 1,370 | 1,315 | 14,819 |
| Field Court Attendance Notice | 3,670 | 3,263 | 3,521 | 3,357 | 3,341 | 3,208 | 3,154 | 3,442 | 3,220 | 3,603 | 3,744 | 3,739 | 41,262 |
| All proceedings to court | 13,509 | 12,293 | 13,261 | 12,025 | 12,581 | 11,608 | 11,878 | 12,089 | 12,109 | 12,324 | 12,553 | 12,400 | 148,630 |
| Proceeded against other than to court: | | | | | | | | | | | | | |
| Youth Conference | 85 | 94 | 96 | 96 | 117 | 101 | 116 | 150 | 119 | 126 | 132 | 107 | 1,339 |
| Caution Young Offenders Act | 608 | 623 | 715 | 651 | 752 | 699 | 728 | 764 | 809 | 722 | 756 | 715 | 8,542 |
| Cannabis/other drug caution* | - | - | - | - | - | - | - | - | - | - | - | - | 0 |
| Infringement Notice/ Public Safety Infringement Notice | 544 | 487 | 606 | 544 | 685 | 696 | 652 | 746 | 774 | 1,435 | 1,248 | 788 | 9,205 |
| Warning | 377 | 409 | 541 | 624 | 693 | 705 | 773 | 706 | 839 | 871 | 914 | 820 | 8,272 |
| All proceedings other than to court | 1,614 | 1,613 | 1,958 | 1,915 | 2,247 | 2,201 | 2,269 | 2,366 | 2,541 | 3,154 | 3,050 | 2,430 | 27,358 |
| All proceedings | 15,123 | 13,906 | 15,219 | 13,940 | 14,828 | 13,809 | 14,147 | 14,455 | 14,650 | 15,478 | 15,603 | 14,830 | 175,988 |
| Not proceeded against† | 2,985 | 2,671 | 3,037 | 2,605 | 2,864 | 2,758 | 2,902 | 3,008 | 3,015 | 3,355 | 3,413 | 3,301 | 35,914 |

* Police did not have the discretion to issue cautions for minor drug offences in 1999.

† Includes person deceased, under 10 years of age, diplomatic immunity, mentally incapable of forming criminal intent, DPP or victim refuses to prosecute and proceeding delayed pending further advice.

TABLE 2.2 MONTHLY TRENDS IN METHODS OF PROCEEDING AGAINST ALLEGED OFFENDERS, 2000, NEW SOUTH WALES: TYPE OF PROCESS

| Type of process | Number of alleged offenders | | | | | | | | | | | | 2000 Total |
|--|-----------------------------|---------------|---------------|---------------|---------------|---------------|---------------|---------------|---------------|---------------|---------------|---------------|----------------|
| | Jan | Feb | Mar | Apr | May | Jun | Jul | Aug | Sep | Oct | Nov | Dec | |
| Proceeded against to court: | | | | | | | | | | | | | |
| Charged | 5,337 | 4,978 | 5,072 | 4,583 | 5,006 | 4,855 | 4,964 | 4,895 | 4,457 | 5,261 | 5,248 | 5,358 | 60,014 |
| Court Attendance Notice | 2,731 | 2,438 | 2,737 | 2,643 | 2,361 | 2,451 | 2,256 | 2,280 | 1,956 | 2,236 | 2,283 | 2,408 | 28,780 |
| Summons | 1,279 | 1,178 | 1,269 | 1,173 | 1,140 | 1,029 | 1,143 | 1,123 | 1,045 | 1,183 | 1,207 | 1,361 | 14,130 |
| Field Court Attendance Notice | 4,020 | 3,226 | 3,711 | 3,542 | 3,086 | 3,239 | 3,000 | 3,236 | 2,872 | 3,512 | 3,919 | 3,951 | 41,314 |
| All proceedings to court | 13,367 | 11,820 | 12,789 | 11,941 | 11,593 | 11,574 | 11,363 | 11,534 | 10,330 | 12,192 | 12,657 | 13,078 | 144,238 |
| Proceeded against other than to court: | | | | | | | | | | | | | |
| Youth Conference | 86 | 121 | 129 | 133 | 93 | 123 | 73 | 97 | 90 | 123 | 93 | 87 | 1,248 |
| Caution Young Offenders Act | 708 | 666 | 683 | 673 | 713 | 839 | 841 | 824 | 704 | 822 | 862 | 762 | 9,097 |
| Cannabis/other drug caution | | 3 | | 150 | 163 | 191 | 143 | 167 | 150 | 152 | 171 | 190 | 1,480 |
| Infringement Notice/ Public Safety Infringement Notice* | 1,058 | 969 | 1,055 | 1,080 | 850 | 1,094 | 1,095 | 1,081 | 733 | 1,006 | 2,515 | 37,083 | 49,619 |
| Warning | 944 | 956 | 1,059 | 1,068 | 862 | 1,008 | 1,128 | 1,128 | 1,140 | 1,217 | 1,414 | 1,469 | 13,393 |
| All proceedings other than to court | 2,796 | 2,715 | 2,926 | 3,104 | 2,681 | 3,255 | 3,280 | 3,297 | 2,817 | 3,320 | 5,055 | 39,591 | 74,837 |
| All proceedings | 16,163 | 14,535 | 15,715 | 15,045 | 14,274 | 14,829 | 14,643 | 14,831 | 13,147 | 15,512 | 17,712 | 52,669 | 219,075 |
| Not proceeded against† | 3,828 | 3,542 | 3,572 | 3,321 | 3,314 | 3,301 | 3,519 | 3,426 | 3,414 | 3,720 | 4,061 | 4,114 | 43,132 |

* Prior to December 2000 traffic infringement notices were not included in this category.

† Includes person deceased, under 10 years of age, diplomatic immunity, mentally incapable of forming criminal intent, DPP or victim refuses to prosecute and proceeding delayed pending further advice.

**TABLE 2.3 MONTHLY TRENDS IN METHODS OF PROCEEDING AGAINST ALLEGED OFFENDERS, 2001,
NEW SOUTH WALES: TYPE OF PROCESS**

| <i>Type of process</i> | <i>Number of alleged offenders</i> | | | | | | | | | | | | <i>2001 Total</i> |
|--|------------------------------------|---------------|---------------|---------------|---------------|---------------|---------------|---------------|---------------|---------------|---------------|---------------|-----------------------|
| | <i>Jan</i> | <i>Feb</i> | <i>Mar</i> | <i>Apr</i> | <i>May</i> | <i>Jun</i> | <i>Jul</i> | <i>Aug</i> | <i>Sep</i> | <i>Oct</i> | <i>Nov</i> | <i>Dec</i> | |
| Proceeded against to court: | | | | | | | | | | | | | |
| Charged | 5,979 | 5,824 | 5,678 | 5,189 | 5,325 | 5,214 | 5,101 | 5,261 | 5,198 | 5,171 | 4,779 | 4,729 | 63,448 |
| Court Attendance Notice | 2,317 | 2,077 | 2,462 | 2,193 | 2,143 | 2,217 | 1,991 | 2,113 | 2,193 | 2,023 | 1,797 | 1,860 | 25,386 |
| Summons | 1,265 | 1,208 | 1,456 | 1,166 | 1,152 | 1,131 | 1,087 | 1,035 | 923 | 864 | 747 | 586 | 12,620 |
| Field Court Attendance Notice | 3,851 | 3,085 | 3,607 | 3,319 | 2,969 | 3,212 | 2,707 | 3,097 | 3,212 | 2,854 | 3,182 | 3,320 | 38,415 |
| All proceedings to court | 13,412 | 12,194 | 13,203 | 11,867 | 11,589 | 11,774 | 10,886 | 11,506 | 11,526 | 10,912 | 10,505 | 10,495 | 139,869 |
| Proceeded against other than to court: | | | | | | | | | | | | | |
| Youth Conference | 80 | 90 | 121 | 117 | 123 | 88 | 125 | 116 | 82 | 57 | 86 | 63 | 1,148 |
| Caution Young Offenders Act | 771 | 669 | 854 | 873 | 796 | 830 | 854 | 889 | 808 | 823 | 670 | 628 | 9,465 |
| Cannabis/other drug caution | 221 | 299 | 269 | 244 | 466 | 512 | 333 | 434 | 464 | 345 | 248 | 293 | 4,128 |
| Infringement Notice/ Public Safety Infringement Notice* | 42,334 | 25,948 | 32,071 | 39,574 | 31,724 | 33,587 | 30,314 | 35,945 | 40,009 | 34,517 | 30,823 | 39,980 | 416,826 |
| Warning | 1,477 | 1,234 | 1,620 | 1,610 | 1,370 | 1,612 | 1,705 | 1,774 | 1,916 | 1,934 | 2,032 | 1,981 | 20,265 |
| All proceedings other than to court | 44,883 | 28,240 | 34,935 | 42,418 | 34,479 | 36,629 | 33,331 | 39,158 | 43,279 | 37,676 | 33,859 | 42,945 | 451,832 |
| All proceedings | 58,295 | 40,434 | 48,138 | 54,285 | 46,068 | 48,403 | 44,217 | 50,664 | 54,805 | 48,588 | 44,364 | 53,440 | 591,701 |
| Not proceeded against† | 4,312 | 3,782 | 4,082 | 3,744 | 3,687 | 4,008 | 3,800 | 3,824 | 4,148 | 4,041 | 3,861 | 3,649 | 46,938 |

* Prior to December 2000 traffic infringement notices were not included in this category.

† Includes person deceased, under 10 years of age, diplomatic immunity, mentally incapable of forming criminal intent, DPP or victim refuses to prosecute and proceeding delayed pending further advice.

**CLEARED CRIMINAL INCIDENTS
FOR SELECTED OFFENCES,
JANUARY 1999 TO SEPTEMBER 2001,
NEW SOUTH WALES**

TABLE 3.1**CLEARED CRIMINAL INCIDENTS, SELECTED OFFENCES,
JANUARY 1999 TO DECEMBER 1999, NEW SOUTH WALES: TYPE OF OFFENCE**

| <i>Type of offence</i> | <i>Recorded criminal incidents</i> | | | | | | |
|-------------------------------------|------------------------------------|--|------------------|--|------------------|---|------------------|
| | <i>Total number recorded</i> | <i>Cleared within 30 days of reporting</i> | | <i>Cleared within 90 days of reporting</i> | | <i>Cleared within 180 days of reporting</i> | |
| | | <i>Total number cleared</i> | <i>% cleared</i> | <i>Total number cleared</i> | <i>% cleared</i> | <i>Total number cleared</i> | <i>% cleared</i> |
| Murder* | 123 | 74 | 60.2 | 81 | 65.9 | 84 | 68.3 |
| Assault | 58,646 | 34,403 | 58.7 | 37,155 | 63.4 | 38,483 | 65.6 |
| Sexual assault | 3,201 | 803 | 25.1 | 1,120 | 35.0 | 1,338 | 41.8 |
| Indecent assault, act of indecency | 3,353 | 883 | 26.3 | 1,175 | 35.0 | 1,530 | 45.6 |
| Other sexual offences | 1,521 | 374 | 24.6 | 428 | 28.1 | 456 | 30.0 |
| Abduction and kidnapping | 401 | 110 | 27.4 | 119 | 29.7 | 133 | 33.2 |
| Robbery without a weapon | 6,462 | 862 | 13.3 | 998 | 15.4 | 1,069 | 16.5 |
| Robbery with a firearm | 697 | 89 | 12.8 | 151 | 21.7 | 171 | 24.5 |
| Robbery with a weapon not a firearm | 3,528 | 530 | 15.0 | 659 | 18.7 | 717 | 20.3 |
| Break and enter – dwelling | 77,852 | 3,458 | 4.4 | 4,555 | 5.9 | 5,149 | 6.6 |
| Break and enter – non-dwelling | 45,995 | 2,324 | 5.1 | 2,880 | 6.3 | 3,206 | 7.0 |
| Motor vehicle theft | 48,401 | 2,514 | 5.2 | 2,958 | 6.1 | 3,184 | 6.6 |
| Steal from motor vehicle | 77,948 | 2,227 | 2.9 | 2,488 | 3.2 | 2,631 | 3.4 |
| Steal from retail store | 21,081 | 12,589 | 59.7 | 12,885 | 61.1 | 13,019 | 61.8 |
| Steal from dwelling | 30,421 | 2,337 | 7.7 | 2,779 | 9.1 | 3,014 | 9.9 |
| Steal from person | 11,592 | 707 | 6.1 | 779 | 6.7 | 843 | 7.3 |
| Stock theft | 790 | 42 | 5.3 | 52 | 6.6 | 60 | 7.6 |
| Fraud | 27,011 | 7,549 | 27.9 | 9,859 | 36.5 | 11,273 | 41.7 |
| Demand money with menaces | 964 | 131 | 13.6 | 165 | 17.1 | 179 | 18.6 |
| Arson | 4,954 | 239 | 4.8 | 284 | 5.7 | 299 | 6.0 |
| Malicious damage to property | 92,264 | 11,939 | 12.9 | 12,951 | 14.0 | 13,488 | 14.6 |

* *Victims for whom incident was cleared.*

TABLE 3.2**CLEARED CRIMINAL INCIDENTS, SELECTED OFFENCES,
JANUARY 2000 TO DECEMBER 2000, NEW SOUTH WALES: TYPE OF OFFENCE**

| <i>Type of offence</i> | <i>Recorded criminal incidents</i> | | | | | | |
|-------------------------------------|------------------------------------|--|------------------|--|------------------|---|------------------|
| | <i>Total number recorded</i> | <i>Cleared within 30 days of reporting</i> | | <i>Cleared within 90 days of reporting</i> | | <i>Cleared within 180 days of reporting</i> | |
| | | <i>Total number cleared</i> | <i>% cleared</i> | <i>Total number cleared</i> | <i>% cleared</i> | <i>Total number cleared</i> | <i>% cleared</i> |
| Murder* | 103 | 69 | 67.0 | 75 | 72.8 | 77 | 74.8 |
| Assault | 62,797 | 36,348 | 57.9 | 39,313 | 62.6 | 40,772 | 64.9 |
| Sexual assault | 3,615 | 814 | 22.5 | 1,163 | 32.2 | 1,366 | 37.8 |
| Indecent assault, act of indecency | 3,833 | 1,038 | 27.1 | 1,431 | 37.3 | 1,649 | 43.0 |
| Other sexual offences | 1,575 | 386 | 24.5 | 453 | 28.8 | 512 | 32.5 |
| Abduction and kidnapping | 370 | 124 | 33.5 | 138 | 37.3 | 144 | 38.9 |
| Robbery without a weapon | 7,060 | 852 | 12.1 | 991 | 14.0 | 1,065 | 15.1 |
| Robbery with a firearm | 656 | 90 | 13.7 | 121 | 18.4 | 137 | 20.9 |
| Robbery with a weapon not a firearm | 3,687 | 546 | 14.8 | 676 | 18.3 | 729 | 19.8 |
| Break and enter – dwelling | 82,427 | 3,327 | 4.0 | 4,308 | 5.2 | 4,890 | 5.9 |
| Break and enter – non-dwelling | 50,470 | 2,200 | 4.4 | 2,779 | 5.5 | 3,104 | 6.2 |
| Motor vehicle theft | 52,626 | 2,786 | 5.3 | 3,234 | 6.1 | 3,537 | 6.7 |
| Steal from motor vehicle | 91,313 | 2,197 | 2.4 | 2,535 | 2.8 | 2,750 | 3.0 |
| Steal from retail store | 21,283 | 13,122 | 61.7 | 13,555 | 63.7 | 13,698 | 64.4 |
| Steal from dwelling | 32,279 | 2,304 | 7.1 | 2,761 | 8.6 | 2,988 | 9.3 |
| Steal from person | 12,972 | 703 | 5.4 | 798 | 6.2 | 858 | 6.6 |
| Stock theft | 757 | 39 | 5.2 | 49 | 6.5 | 50 | 6.6 |
| Fraud | 27,607 | 6,211 | 22.5 | 8,240 | 29.8 | 9,376 | 34.0 |
| Demand money with menaces | 1,062 | 190 | 17.9 | 223 | 21.0 | 242 | 22.8 |
| Arson | 6,157 | 309 | 5.0 | 340 | 5.5 | 368 | 6.0 |
| Malicious damage to property | 94,564 | 13,161 | 13.9 | 14,268 | 15.1 | 14,829 | 15.7 |

* *Victims for whom incident was cleared.*

TABLE 3.3**CLEARED CRIMINAL INCIDENTS, SELECTED OFFENCES,
JANUARY 2001 TO SEPTEMBER 2001, NEW SOUTH WALES: TYPE OF OFFENCE**

| <i>Type of offence</i> | <i>Recorded criminal incidents</i> | | | | |
|-------------------------------------|------------------------------------|--|------------------|--|------------------|
| | <i>Total number recorded</i> | <i>Cleared within 30 days of reporting</i> | | <i>Cleared within 90 days of reporting</i> | |
| | | <i>Total number cleared</i> | <i>% cleared</i> | <i>Total number cleared</i> | <i>% cleared</i> |
| Murder* | 81 | 45 | 55.6 | 48 | 59.3 |
| Assault | 49,970 | 28,783 | 57.6 | 31,111 | 62.3 |
| Sexual assault | 2,778 | 553 | 19.9 | 804 | 28.9 |
| Indecent assault, act of indecency | 2,741 | 679 | 24.8 | 974 | 35.5 |
| Other sexual offences | 1,129 | 286 | 25.3 | 331 | 29.3 |
| Abduction and kidnapping | 338 | 103 | 30.5 | 128 | 37.9 |
| Robbery without a weapon | 6,279 | 716 | 11.4 | 850 | 13.5 |
| Robbery with a firearm | 697 | 66 | 9.5 | 86 | 12.3 |
| Robbery with a weapon not a firearm | 3,402 | 531 | 15.6 | 655 | 19.3 |
| Break and enter – dwelling | 60,941 | 2,379 | 3.9 | 3,149 | 5.2 |
| Break and enter – non-dwelling | 39,805 | 1,699 | 4.3 | 2,043 | 5.1 |
| Motor vehicle theft | 41,290 | 2,256 | 5.5 | 2,661 | 6.4 |
| Steal from motor vehicle | 68,513 | 1,796 | 2.6 | 1,988 | 2.9 |
| Steal from retail store | 15,738 | 9,390 | 59.7 | 9,634 | 61.2 |
| Steal from dwelling | 23,318 | 1,649 | 7.1 | 1,919 | 8.2 |
| Steal from person | 11,487 | 575 | 5.0 | 669 | 5.8 |
| Stock theft | 724 | 34 | 4.7 | 40 | 5.5 |
| Fraud | 24,310 | 4,389 | 18.1 | 5,666 | 23.3 |
| Demand money with menaces | 778 | 166 | 21.3 | 200 | 25.7 |
| Arson | 5,391 | 265 | 4.9 | 305 | 5.7 |
| Malicious damage to property | 71,663 | 10,293 | 14.4 | 11,224 | 15.7 |

* *Victims for whom incident was cleared.*

**RECORDED CRIME STATISTICS
IN NEW SOUTH WALES REGIONS
FOR SELECTED OFFENCES,
1999, 2000 AND 2001**

TABLE 4.1 RECORDED CRIMINAL VICTIMS, 1999 TO 2001: STATISTICAL DIVISION**MURDER**

| <i>Statistical Division where offence occurred</i> | <i>Recorded victims</i> | | | | | |
|--|-------------------------|--|---------------|--|---------------|--|
| | <i>1999</i> | | <i>2000</i> | | <i>2001</i> | |
| | <i>Number</i> | <i>Rate per 100,000 population</i> | <i>Number</i> | <i>Rate per 100,000 population</i> | <i>Number</i> | <i>Rate per 100,000 population</i> |
| Sydney | 67 | 1.7 | 55 | 1.3 | 77 | 1.9 |
| Inner Sydney | 17 | 5.9 | 10 | 3.4 | 15 | 5.1 |
| Eastern Suburbs | 2 | 0.8 | 1 | 0.4 | 3 | 1.2 |
| St George – Sutherland | 4 | 0.9 | 3 | 0.7 | 7 | 1.6 |
| Canterbury – Bankstown | 11 | 3.6 | 6 | 1.9 | 8 | 2.5 |
| Fairfield – Liverpool | 9 | 2.7 | 5 | 1.5 | 14 | 4.0 |
| Outer South Western Sydney | 0 | 0.0 | 3 | 1.3 | 3 | 1.3 |
| Inner Western Sydney | 1 | 0.6 | 1 | 0.6 | 4 | 2.4 |
| Central Western Sydney | 4 | 1.4 | 7 | 2.4 | 4 | 1.3 |
| Outer Western Sydney | 6 | 1.9 | 4 | 1.3 | 4 | 1.3 |
| Blacktown | 1 | 0.4 | 4 | 1.5 | 0 | 0.0 |
| Lower Northern Sydney | 3 | 1.0 | 4 | 1.4 | 4 | 1.4 |
| Central Northern Sydney | 0 | 0.0 | 2 | 0.5 | 2 | 0.5 |
| Northern Beaches | 0 | 0.0 | 1 | 0.4 | 1 | 0.4 |
| Gosford – Wyong | 9 | 3.1 | 4 | 1.4 | 8 | 2.7 |
| Hunter | 11 | 1.9 | 8 | 1.4 | 7 | 1.2 |
| Illawarra | 11 | 2.9 | 4 | 1.0 | 2 | 0.5 |
| Richmond – Tweed | 8 | 3.8 | 3 | 1.4 | 1 | 0.5 |
| Mid-North Coast | 2 | 0.7 | 3 | 1.1 | 8 | 2.9 |
| Northern | 4 | 2.3 | 10 | 5.8 | 0 | 0.0 |
| North Western | 4 | 3.4 | 3 | 2.6 | 0 | 0.0 |
| Central West | 1 | 0.6 | 3 | 1.7 | 2 | 1.2 |
| South Eastern | 2 | 1.1 | 3 | 1.6 | 3 | 1.6 |
| Murrumbidgee | 3 | 2.0 | 3 | 2.0 | 0 | 0.0 |
| Murray | 6 | 5.4 | 4 | 3.6 | 2 | 1.8 |
| Far West | 1 | 4.1 | 1 | 4.2 | 1 | 4.3 |
| New South Wales* | 123 | 1.9 | 103 | 1.6 | 103 | 1.6 |

* The total for New South Wales includes 3 recorded victims in 1999 and 3 recorded victims in 2000 where the offence occurred in a custodial institution.

TABLE 4.2 RECORDED CRIMINAL INCIDENTS, 1999 TO 2001: STATISTICAL DIVISION**ASSAULT**

| <i>Statistical Division where offence occurred</i> | <i>Recorded criminal incidents</i> | | | | | |
|--|------------------------------------|--|---------------|--|---------------|--|
| | <i>1999</i> | | <i>2000</i> | | <i>2001</i> | |
| | <i>Number</i> | <i>Rate per 100,000 population</i> | <i>Number</i> | <i>Rate per 100,000 population</i> | <i>Number</i> | <i>Rate per 100,000 population</i> |
| Sydney | 32,520 | 806.6 | 34,122 | 835.3 | 36,632 | 884.7 |
| Inner Sydney | 5,855 | 2,047.8 | 6,467 | 2,229.2 | 6,684 | 2,267.0 |
| Eastern Suburbs | 1,677 | 682.6 | 1,728 | 701.6 | 1,928 | 779.2 |
| St George – Sutherland | 2,254 | 531.0 | 2,188 | 509.0 | 2,443 | 560.8 |
| Canterbury – Bankstown | 1,951 | 634.2 | 1,990 | 639.5 | 2,214 | 704.6 |
| Fairfield – Liverpool | 2,765 | 829.8 | 2,833 | 832.1 | 3,092 | 890.5 |
| Outer South Western Sydney | 2,535 | 1,122.6 | 2,568 | 1,122.5 | 2,926 | 1,261.5 |
| Inner Western Sydney | 980 | 611.3 | 991 | 610.4 | 995 | 605.3 |
| Central Western Sydney | 2,726 | 940.2 | 2,742 | 935.3 | 2,772 | 931.0 |
| Outer Western Sydney | 2,756 | 886.0 | 2,712 | 864.5 | 3,062 | 969.1 |
| Blacktown | 3,333 | 1,311.1 | 3,602 | 1,383.8 | 3,833 | 1,467.1 |
| Lower Northern Sydney | 1,149 | 396.8 | 1,322 | 452.3 | 1,280 | 432.2 |
| Central Northern Sydney | 1,007 | 258.4 | 1,106 | 280.2 | 1,187 | 293.1 |
| Northern Beaches | 1,154 | 506.8 | 1,128 | 491.9 | 1,128 | 487.3 |
| Gosford – Wyong | 2,378 | 829.1 | 2,745 | 938.3 | 3,088 | 1,037.7 |
| Hunter | 4,505 | 788.3 | 5,362 | 929.6 | 5,857 | 1,006.4 |
| Illawarra | 3,494 | 908.5 | 3,938 | 1,011.8 | 4,370 | 1,111.2 |
| Richmond – Tweed | 2,039 | 976.6 | 2,374 | 1,124.4 | 2,407 | 1,131.1 |
| Mid-North Coast | 2,916 | 1,077.2 | 3,191 | 1,169.2 | 3,472 | 1,262.1 |
| Northern | 2,119 | 1,214.0 | 2,231 | 1,288.2 | 2,246 | 1,304.0 |
| North Western | 2,502 | 2,133.9 | 2,497 | 2,136.4 | 2,643 | 2,269.8 |
| Central West | 2,039 | 1,178.9 | 2,014 | 1,166.0 | 2,159 | 1,246.2 |
| South Eastern | 1,858 | 1,025.5 | 2,040 | 1,118.2 | 2,233 | 1,210.7 |
| Murrumbidgee | 1,735 | 1,167.4 | 2,005 | 1,348.2 | 2,478 | 1,665.2 |
| Murray | 1,093 | 989.4 | 1,229 | 1,117.8 | 1,308 | 1,187.7 |
| Far West | 642 | 2,654.2 | 658 | 2,790.0 | 670 | 2,888.3 |
| New South Wales* | 58,646 | 916.8 | 62,797 | 971.7 | 67,599 | 1,034.8 |

* The total for New South Wales includes 1,184 recorded incidents in 1999, 1,136 recorded incidents in 2000 and 1,124 recorded incidents in 2001 where the offence occurred in a custodial institution.

TABLE 4.3 RECORDED CRIMINAL INCIDENTS, 1999 TO 2001: STATISTICAL DIVISION**SEXUAL ASSAULT**

| <i>Statistical Division where offence occurred</i> | <i>Recorded criminal incidents</i> | | | | | |
|--|------------------------------------|--|---------------|--|---------------|--|
| | <i>1999</i> | | <i>2000</i> | | <i>2001</i> | |
| | <i>Number</i> | <i>Rate per 100,000 population</i> | <i>Number</i> | <i>Rate per 100,000 population</i> | <i>Number</i> | <i>Rate per 100,000 population</i> |
| Sydney | 1,747 | 43.3 | 1,859 | 45.5 | 1,907 | 46.1 |
| Inner Sydney | 210 | 73.4 | 261 | 90.0 | 256 | 86.8 |
| Eastern Suburbs | 70 | 28.5 | 61 | 24.8 | 69 | 27.9 |
| St George – Sutherland | 104 | 24.5 | 127 | 29.5 | 120 | 27.5 |
| Canterbury – Bankstown | 176 | 57.2 | 121 | 38.9 | 118 | 37.6 |
| Fairfield – Liverpool | 129 | 38.7 | 171 | 50.2 | 168 | 48.4 |
| Outer South Western Sydney | 165 | 73.1 | 157 | 68.6 | 200 | 86.2 |
| Inner Western Sydney | 63 | 39.3 | 53 | 32.6 | 52 | 31.6 |
| Central Western Sydney | 127 | 43.8 | 147 | 50.1 | 135 | 45.3 |
| Outer Western Sydney | 172 | 55.3 | 198 | 63.1 | 229 | 72.5 |
| Blacktown | 158 | 62.2 | 197 | 75.7 | 182 | 69.7 |
| Lower Northern Sydney | 77 | 26.6 | 68 | 23.3 | 77 | 26.0 |
| Central Northern Sydney | 83 | 21.3 | 87 | 22.0 | 81 | 20.0 |
| Northern Beaches | 53 | 23.3 | 63 | 27.5 | 70 | 30.2 |
| Gosford – Wyong | 160 | 55.8 | 148 | 50.6 | 150 | 50.4 |
| Hunter | 297 | 52.0 | 320 | 55.5 | 336 | 57.7 |
| Illawarra | 190 | 49.4 | 272 | 69.9 | 235 | 59.8 |
| Richmond – Tweed | 81 | 38.8 | 120 | 56.8 | 127 | 59.7 |
| Mid-North Coast | 151 | 55.8 | 187 | 68.5 | 202 | 73.4 |
| Northern | 114 | 65.3 | 153 | 88.3 | 153 | 88.8 |
| North Western | 112 | 95.5 | 149 | 127.5 | 128 | 109.9 |
| Central West | 144 | 83.3 | 136 | 78.7 | 152 | 87.7 |
| South Eastern | 97 | 53.5 | 135 | 74.0 | 149 | 80.8 |
| Murrumbidgee | 122 | 82.1 | 131 | 88.1 | 126 | 84.7 |
| Murray | 79 | 71.5 | 108 | 98.2 | 116 | 105.3 |
| Far West | 34 | 140.6 | 25 | 106.0 | 26 | 112.1 |
| New South Wales* | 3,201 | 50.0 | 3,615 | 55.9 | 3,674 | 56.2 |

* The total for New South Wales includes 33 recorded incidents in 1999, 20 recorded incidents in 2000 and 17 recorded incidents in 2001 where the offence occurred in a custodial institution.

TABLE 4.4 RECORDED CRIMINAL INCIDENTS, 1999 TO 2001: STATISTICAL DIVISION**INDECENT ASSAULT, ACT OF INDECENCY, OTHER SEXUAL OFFENCES**

| <i>Statistical Division where offence occurred</i> | <i>Recorded criminal incidents</i> | | | | | |
|--|------------------------------------|--|---------------|--|---------------|--|
| | <i>1999</i> | | <i>2000</i> | | <i>2001</i> | |
| | <i>Number</i> | <i>Rate per 100,000 population</i> | <i>Number</i> | <i>Rate per 100,000 population</i> | <i>Number</i> | <i>Rate per 100,000 population</i> |
| Sydney | 2,709 | 67.2 | 2,864 | 70.1 | 2,818 | 68.1 |
| Inner Sydney | 323 | 113.0 | 330 | 113.8 | 319 | 108.2 |
| Eastern Suburbs | 110 | 44.8 | 118 | 47.9 | 105 | 42.4 |
| St George – Sutherland | 198 | 46.6 | 199 | 46.3 | 226 | 51.9 |
| Canterbury – Bankstown | 181 | 58.8 | 166 | 53.3 | 148 | 47.1 |
| Fairfield – Liverpool | 209 | 62.7 | 217 | 63.7 | 178 | 51.3 |
| Outer South Western Sydney | 225 | 99.6 | 244 | 106.7 | 247 | 106.5 |
| Inner Western Sydney | 113 | 70.5 | 131 | 80.7 | 103 | 62.7 |
| Central Western Sydney | 208 | 71.7 | 201 | 68.6 | 217 | 72.9 |
| Outer Western Sydney | 236 | 75.9 | 274 | 87.3 | 295 | 93.4 |
| Blacktown | 184 | 72.4 | 239 | 91.8 | 286 | 109.5 |
| Lower Northern Sydney | 154 | 53.2 | 160 | 54.7 | 175 | 59.1 |
| Central Northern Sydney | 178 | 45.7 | 158 | 40.0 | 139 | 34.3 |
| Northern Beaches | 129 | 56.7 | 110 | 48.0 | 142 | 61.4 |
| Gosford – Wyong | 261 | 91.0 | 317 | 108.4 | 238 | 80.0 |
| Hunter | 399 | 69.8 | 451 | 78.2 | 450 | 77.3 |
| Illawarra | 356 | 92.6 | 299 | 76.8 | 279 | 70.9 |
| Richmond – Tweed | 169 | 80.9 | 214 | 101.4 | 172 | 80.8 |
| Mid-North Coast | 187 | 69.1 | 297 | 108.8 | 296 | 107.6 |
| Northern | 243 | 139.2 | 241 | 139.2 | 228 | 132.4 |
| North Western | 174 | 148.4 | 211 | 180.5 | 146 | 125.4 |
| Central West | 159 | 91.9 | 174 | 100.7 | 181 | 104.5 |
| South Eastern | 167 | 92.2 | 227 | 124.4 | 161 | 87.3 |
| Murrumbidgee | 153 | 102.9 | 217 | 145.9 | 182 | 122.3 |
| Murray | 91 | 82.4 | 148 | 134.6 | 125 | 113.5 |
| Far West | 29 | 119.9 | 41 | 173.8 | 32 | 137.9 |
| New South Wales* | 4,874 | 76.2 | 5,408 | 83.7 | 5,082 | 77.8 |

* The total for New South Wales includes 38 recorded incidents in 1999, 24 recorded incidents in 2000 and 12 recorded incidents in 2001 where the offence occurred in a custodial institution.

TABLE 4.5 RECORDED CRIMINAL INCIDENTS, 1999 TO 2001: STATISTICAL DIVISION**ROBBERY WITHOUT A WEAPON**

| <i>Statistical Division where offence occurred</i> | <i>Recorded criminal incidents</i> | | | | | |
|--|------------------------------------|--|---------------|--|---------------|--|
| | <i>1999</i> | | <i>2000</i> | | <i>2001</i> | |
| | <i>Number</i> | <i>Rate per 100,000 population</i> | <i>Number</i> | <i>Rate per 100,000 population</i> | <i>Number</i> | <i>Rate per 100,000 population</i> |
| Sydney | 5,600 | 138.9 | 6,156 | 150.7 | 6,996 | 169.0 |
| Inner Sydney | 1,708 | 597.4 | 1,709 | 589.1 | 2,295 | 778.4 |
| Eastern Suburbs | 243 | 98.9 | 324 | 131.6 | 377 | 152.4 |
| St George – Sutherland | 389 | 91.6 | 342 | 79.6 | 431 | 98.9 |
| Canterbury – Bankstown | 686 | 223.0 | 610 | 196.0 | 539 | 171.5 |
| Fairfield – Liverpool | 545 | 163.6 | 654 | 192.1 | 677 | 195.0 |
| Outer South Western Sydney | 249 | 110.3 | 295 | 128.9 | 376 | 162.1 |
| Inner Western Sydney | 250 | 156.0 | 281 | 173.1 | 408 | 248.2 |
| Central Western Sydney | 519 | 179.0 | 597 | 203.6 | 597 | 200.5 |
| Outer Western Sydney | 221 | 71.1 | 297 | 94.7 | 259 | 82.0 |
| Blacktown | 291 | 114.5 | 410 | 157.5 | 353 | 135.1 |
| Lower Northern Sydney | 182 | 62.8 | 218 | 74.6 | 287 | 96.9 |
| Central Northern Sydney | 126 | 32.3 | 203 | 51.4 | 173 | 42.7 |
| Northern Beaches | 87 | 38.2 | 124 | 54.1 | 116 | 50.1 |
| Gosford – Wyong | 104 | 36.3 | 92 | 31.4 | 108 | 36.3 |
| Hunter | 236 | 41.3 | 260 | 45.1 | 291 | 50.0 |
| Illawarra | 166 | 43.2 | 188 | 48.3 | 255 | 64.8 |
| Richmond – Tweed | 64 | 30.7 | 64 | 30.3 | 70 | 32.9 |
| Mid-North Coast | 76 | 28.1 | 80 | 29.3 | 95 | 34.5 |
| Northern | 63 | 36.1 | 68 | 39.3 | 49 | 28.4 |
| North Western | 83 | 70.8 | 91 | 77.9 | 84 | 72.1 |
| Central West | 61 | 35.3 | 53 | 30.7 | 48 | 27.7 |
| South Eastern | 38 | 21.0 | 42 | 23.0 | 31 | 16.8 |
| Murrumbidgee | 41 | 27.6 | 36 | 24.2 | 38 | 25.5 |
| Murray | 24 | 21.7 | 15 | 13.6 | 19 | 17.3 |
| Far West | 8 | 33.1 | 4 | 17.0 | 12 | 51.7 |
| New South Wales* | 6,462 | 101.0 | 7,060 | 109.2 | 7,990 | 122.3 |

* The total for New South Wales includes 2 recorded incidents in 1999, 3 recorded incidents in 2000 and 2 recorded incidents in 2001 where the offence occurred in a custodial institution.

TABLE 4.6 RECORDED CRIMINAL INCIDENTS, 1999 TO 2001: STATISTICAL DIVISION**ROBBERY WITH A FIREARM**

| <i>Statistical Division where offence occurred</i> | <i>Recorded criminal incidents</i> | | | | | |
|--|------------------------------------|--|---------------|--|---------------|--|
| | <i>1999</i> | | <i>2000</i> | | <i>2001</i> | |
| | <i>Number</i> | <i>Rate per 100,000 population</i> | <i>Number</i> | <i>Rate per 100,000 population</i> | <i>Number</i> | <i>Rate per 100,000 population</i> |
| Sydney | 623 | 15.5 | 588 | 14.4 | 803 | 19.4 |
| Inner Sydney | 111 | 38.8 | 106 | 36.5 | 128 | 43.4 |
| Eastern Suburbs | 47 | 19.1 | 22 | 8.9 | 37 | 15.0 |
| St George – Sutherland | 51 | 12.0 | 48 | 11.2 | 85 | 19.5 |
| Canterbury – Bankstown | 90 | 29.3 | 88 | 28.3 | 126 | 40.1 |
| Fairfield – Liverpool | 78 | 23.4 | 70 | 20.6 | 114 | 32.8 |
| Outer South Western Sydney | 24 | 10.6 | 17 | 7.4 | 26 | 11.2 |
| Inner Western Sydney | 37 | 23.1 | 45 | 27.7 | 55 | 33.5 |
| Central Western Sydney | 51 | 17.6 | 66 | 22.5 | 108 | 36.3 |
| Outer Western Sydney | 21 | 6.8 | 16 | 5.1 | 22 | 7.0 |
| Blacktown | 14 | 5.5 | 13 | 5.0 | 31 | 11.9 |
| Lower Northern Sydney | 29 | 10.0 | 38 | 13.0 | 31 | 10.5 |
| Central Northern Sydney | 34 | 8.7 | 25 | 6.3 | 25 | 6.2 |
| Northern Beaches | 8 | 3.5 | 10 | 4.4 | 5 | 2.2 |
| Gosford – Wyong | 28 | 9.8 | 24 | 8.2 | 10 | 3.4 |
| Hunter | 36 | 6.3 | 24 | 4.2 | 39 | 6.7 |
| Illawarra | 15 | 3.9 | 26 | 6.7 | 20 | 5.1 |
| Richmond – Tweed | 6 | 2.9 | 6 | 2.8 | 6 | 2.8 |
| Mid-North Coast | 6 | 2.2 | 2 | 0.7 | 5 | 1.8 |
| Northern | 4 | 2.3 | 2 | 1.2 | 0 | 0.0 |
| North Western | 0 | 0.0 | 5 | 4.3 | 1 | 0.9 |
| Central West | 2 | 1.2 | 1 | 0.6 | 0 | 0.0 |
| South Eastern | 1 | 0.6 | 1 | 0.5 | 6 | 3.3 |
| Murrumbidgee | 3 | 2.0 | 1 | 0.7 | 0 | 0.0 |
| Murray | 1 | 0.9 | 0 | 0.0 | 0 | 0.0 |
| Far West | 0 | 0.0 | 0 | 0.0 | 0 | 0.0 |
| New South Wales | 697 | 10.9 | 656 | 10.2 | 880 | 13.5 |

TABLE 4.7 RECORDED CRIMINAL INCIDENTS, 1999 TO 2001: STATISTICAL DIVISION**ROBBERY WITH A WEAPON NOT A FIREARM**

| <i>Statistical Division where offence occurred</i> | <i>Recorded criminal incidents</i> | | | | | |
|--|------------------------------------|--|---------------|--|---------------|--|
| | <i>1999</i> | | <i>2000</i> | | <i>2001</i> | |
| | <i>Number</i> | <i>Rate per 100,000 population</i> | <i>Number</i> | <i>Rate per 100,000 population</i> | <i>Number</i> | <i>Rate per 100,000 population</i> |
| Sydney | 3,080 | 76.4 | 3,265 | 79.9 | 3,887 | 93.9 |
| Inner Sydney | 776 | 271.4 | 825 | 284.4 | 1,137 | 385.6 |
| Eastern Suburbs | 118 | 48.0 | 160 | 65.0 | 203 | 82.0 |
| St George – Sutherland | 201 | 47.4 | 182 | 42.3 | 276 | 63.4 |
| Canterbury – Bankstown | 488 | 158.6 | 389 | 125.0 | 402 | 127.9 |
| Fairfield – Liverpool | 401 | 120.3 | 426 | 125.1 | 481 | 138.5 |
| Outer South Western Sydney | 99 | 43.8 | 88 | 38.5 | 142 | 61.2 |
| Inner Western Sydney | 178 | 111.0 | 178 | 109.6 | 232 | 141.1 |
| Central Western Sydney | 307 | 105.9 | 396 | 135.1 | 394 | 132.3 |
| Outer Western Sydney | 75 | 24.1 | 95 | 30.3 | 81 | 25.6 |
| Blacktown | 99 | 38.9 | 126 | 48.4 | 166 | 63.5 |
| Lower Northern Sydney | 126 | 43.5 | 175 | 59.9 | 141 | 47.6 |
| Central Northern Sydney | 102 | 26.2 | 89 | 22.6 | 102 | 25.2 |
| Northern Beaches | 46 | 20.2 | 52 | 22.7 | 58 | 25.1 |
| Gosford – Wyong | 64 | 22.3 | 84 | 28.7 | 72 | 24.2 |
| Hunter | 186 | 32.5 | 149 | 25.8 | 162 | 27.8 |
| Illawarra | 93 | 24.2 | 109 | 28.0 | 82 | 20.9 |
| Richmond – Tweed | 21 | 10.1 | 23 | 10.9 | 16 | 7.5 |
| Mid-North Coast | 30 | 11.1 | 27 | 9.9 | 28 | 10.2 |
| Northern | 19 | 10.9 | 23 | 13.3 | 19 | 11.0 |
| North Western | 35 | 29.9 | 23 | 19.7 | 25 | 21.5 |
| Central West | 19 | 11.0 | 41 | 23.7 | 14 | 8.1 |
| South Eastern | 23 | 12.7 | 11 | 6.0 | 32 | 17.4 |
| Murrumbidgee | 11 | 7.4 | 11 | 7.4 | 14 | 9.4 |
| Murray | 5 | 4.5 | 4 | 3.6 | 10 | 9.1 |
| Far West | 6 | 24.8 | 1 | 4.2 | 1 | 4.3 |
| New South Wales | 3,528 | 55.2 | 3,687 | 57.1 | 4,290 | 65.7 |

TABLE 4.8 RECORDED CRIMINAL INCIDENTS, 1999 TO 2001: STATISTICAL DIVISION**BREAK AND ENTER – DWELLING**

| <i>Statistical Division where offence occurred</i> | <i>Recorded criminal incidents</i> | | | | | |
|--|------------------------------------|--|---------------|--|---------------|--|
| | <i>1999</i> | | <i>2000</i> | | <i>2001</i> | |
| | <i>Number</i> | <i>Rate per 100,000 population</i> | <i>Number</i> | <i>Rate per 100,000 population</i> | <i>Number</i> | <i>Rate per 100,000 population</i> |
| Sydney | 51,653 | 1,281.1 | 55,813 | 1,366.3 | 53,633 | 1,295.2 |
| Inner Sydney | 5,174 | 1,809.6 | 6,158 | 2,122.7 | 6,388 | 2,166.6 |
| Eastern Suburbs | 2,845 | 1,158.1 | 3,907 | 1,586.4 | 4,341 | 1,754.4 |
| St George – Sutherland | 4,493 | 1,058.5 | 4,869 | 1,132.7 | 5,302 | 1,217.1 |
| Canterbury – Bankstown | 4,257 | 1,383.7 | 3,921 | 1,260.0 | 4,040 | 1,285.7 |
| Fairfield – Liverpool | 4,618 | 1,385.9 | 5,741 | 1,686.3 | 4,808 | 1,384.7 |
| Outer South Western Sydney | 3,744 | 1,658.0 | 3,077 | 1,344.9 | 2,768 | 1,193.4 |
| Inner Western Sydney | 2,342 | 1,461.0 | 2,393 | 1,473.9 | 2,620 | 1,594.0 |
| Central Western Sydney | 5,183 | 1,787.7 | 4,617 | 1,574.9 | 4,396 | 1,476.5 |
| Outer Western Sydney | 3,095 | 995.0 | 3,157 | 1,006.3 | 3,011 | 953.0 |
| Blacktown | 3,354 | 1,319.3 | 3,650 | 1,402.3 | 3,232 | 1,237.1 |
| Lower Northern Sydney | 3,931 | 1,357.5 | 4,415 | 1,510.6 | 3,699 | 1,248.9 |
| Central Northern Sydney | 3,028 | 777.1 | 3,507 | 888.6 | 3,071 | 758.3 |
| Northern Beaches | 1,926 | 845.9 | 1,997 | 870.9 | 1,923 | 830.8 |
| Gosford – Wyong | 3,663 | 1,277.2 | 4,404 | 1,505.4 | 4,034 | 1,355.5 |
| Hunter | 7,138 | 1,249.1 | 7,831 | 1,357.7 | 6,510 | 1,118.6 |
| Illawarra | 5,678 | 1,476.4 | 5,627 | 1,445.7 | 6,082 | 1,546.5 |
| Richmond – Tweed | 1,835 | 878.9 | 1,958 | 927.4 | 1,660 | 780.1 |
| Mid-North Coast | 2,556 | 944.2 | 2,158 | 790.7 | 2,376 | 863.7 |
| Northern | 1,794 | 1,027.8 | 1,573 | 908.2 | 1,686 | 978.9 |
| North Western | 1,841 | 1,570.1 | 1,807 | 1,546.1 | 2,142 | 1,839.5 |
| Central West | 1,950 | 1,127.4 | 1,872 | 1,083.8 | 1,630 | 940.8 |
| South Eastern | 1,480 | 816.9 | 1,415 | 775.6 | 1,456 | 789.4 |
| Murrumbidgee | 952 | 640.6 | 1,091 | 733.6 | 1,285 | 863.5 |
| Murray | 680 | 615.6 | 925 | 841.3 | 1,021 | 927.1 |
| Far West | 295 | 1,219.6 | 357 | 1,513.7 | 318 | 1,370.9 |
| New South Wales | 77,852 | 1,217.1 | 82,427 | 1,275.5 | 79,799 | 1,221.6 |

TABLE 4.9 RECORDED CRIMINAL INCIDENTS, 1999 TO 2001: STATISTICAL DIVISION**BREAK AND ENTER – NON-DWELLING**

| <i>Statistical Division where offence occurred</i> | <i>Recorded criminal incidents</i> | | | | | |
|--|------------------------------------|--|---------------|--|---------------|--|
| | <i>1999</i> | | <i>2000</i> | | <i>2001</i> | |
| | <i>Number</i> | <i>Rate per 100,000 population</i> | <i>Number</i> | <i>Rate per 100,000 population</i> | <i>Number</i> | <i>Rate per 100,000 population</i> |
| Sydney | 25,395 | 629.8 | 28,042 | 686.5 | 29,465 | 711.6 |
| Inner Sydney | 4,625 | 1,617.6 | 4,878 | 1,681.4 | 5,288 | 1,793.5 |
| Eastern Suburbs | 1,081 | 440.0 | 1,220 | 495.4 | 1,283 | 518.5 |
| St George – Sutherland | 1,863 | 438.9 | 2,125 | 494.4 | 1,907 | 437.8 |
| Canterbury – Bankstown | 1,682 | 546.7 | 1,756 | 564.3 | 1,716 | 546.1 |
| Fairfield – Liverpool | 1,968 | 590.6 | 2,671 | 784.6 | 2,723 | 784.2 |
| Outer South Western Sydney | 1,333 | 590.3 | 1,490 | 651.3 | 1,920 | 827.8 |
| Inner Western Sydney | 975 | 608.2 | 934 | 575.3 | 850 | 517.1 |
| Central Western Sydney | 2,217 | 764.7 | 2,493 | 850.4 | 2,576 | 865.2 |
| Outer Western Sydney | 1,654 | 531.8 | 1,918 | 611.4 | 2,131 | 674.5 |
| Blacktown | 1,382 | 543.6 | 1,540 | 591.6 | 1,551 | 593.7 |
| Lower Northern Sydney | 1,948 | 672.7 | 2,215 | 757.8 | 2,474 | 835.3 |
| Central Northern Sydney | 1,358 | 348.5 | 1,615 | 409.2 | 1,729 | 426.9 |
| Northern Beaches | 1,143 | 502.0 | 924 | 403.0 | 1,013 | 437.7 |
| Gosford – Wyong | 2,166 | 755.2 | 2,263 | 773.6 | 2,304 | 774.2 |
| Hunter | 6,332 | 1,108.0 | 6,627 | 1,149.0 | 5,941 | 1,020.8 |
| Illawarra | 3,107 | 807.9 | 3,600 | 924.9 | 4,092 | 1,040.5 |
| Richmond – Tweed | 1,324 | 634.1 | 1,670 | 791.0 | 1,634 | 767.8 |
| Mid-North Coast | 2,100 | 775.8 | 2,328 | 853.0 | 2,317 | 842.3 |
| Northern | 1,661 | 951.6 | 1,540 | 889.2 | 1,578 | 916.2 |
| North Western | 1,281 | 1,092.5 | 1,671 | 1,429.7 | 1,452 | 1,247.0 |
| Central West | 1,372 | 793.2 | 1,414 | 818.6 | 1,607 | 927.6 |
| South Eastern | 1,321 | 729.1 | 1,351 | 740.5 | 1,360 | 737.4 |
| Murrumbidgee | 1,028 | 691.7 | 994 | 668.4 | 1,384 | 930.0 |
| Murray | 823 | 745.0 | 971 | 883.2 | 982 | 891.7 |
| Far West | 229 | 946.8 | 245 | 1,038.8 | 240 | 1,034.6 |
| New South Wales* | 45,995 | 719.0 | 50,470 | 781.0 | 52,060 | 796.9 |

* The total for New South Wales includes 1,910 recorded incidents in 1999, 2,156 recorded incidents in 2000 and 2,410 recorded incidents in 2001 where the offence occurred in a custodial institution.

TABLE 4.10 RECORDED CRIMINAL INCIDENTS, 1999 TO 2001: STATISTICAL DIVISION**RECEIVING, GOODS IN CUSTODY**

| <i>Statistical Division where offence occurred</i> | <i>Recorded criminal incidents</i> | | | | | |
|--|------------------------------------|--|---------------|--|---------------|--|
| | <i>1999</i> | | <i>2000</i> | | <i>2001</i> | |
| | <i>Number</i> | <i>Rate per 100,000 population</i> | <i>Number</i> | <i>Rate per 100,000 population</i> | <i>Number</i> | <i>Rate per 100,000 population</i> |
| Sydney | 7,882 | 195.5 | 8,039 | 196.8 | 7,790 | 188.1 |
| Inner Sydney | 1,936 | 677.1 | 2,137 | 736.6 | 2,140 | 725.8 |
| Eastern Suburbs | 272 | 110.7 | 324 | 131.6 | 357 | 144.3 |
| St George – Sutherland | 426 | 100.4 | 544 | 126.6 | 593 | 136.1 |
| Canterbury – Bankstown | 557 | 181.1 | 602 | 193.4 | 544 | 173.1 |
| Fairfield – Liverpool | 1,286 | 385.9 | 1,079 | 316.9 | 784 | 225.8 |
| Outer South Western Sydney | 444 | 196.6 | 333 | 145.6 | 344 | 148.3 |
| Inner Western Sydney | 273 | 170.3 | 218 | 134.3 | 260 | 158.2 |
| Central Western Sydney | 633 | 218.3 | 620 | 211.5 | 647 | 217.3 |
| Outer Western Sydney | 409 | 131.5 | 444 | 141.5 | 553 | 175.0 |
| Blacktown | 686 | 269.8 | 627 | 240.9 | 518 | 198.3 |
| Lower Northern Sydney | 255 | 88.1 | 309 | 105.7 | 279 | 94.2 |
| Central Northern Sydney | 181 | 46.5 | 232 | 58.8 | 190 | 46.9 |
| Northern Beaches | 150 | 65.9 | 172 | 75.0 | 174 | 75.2 |
| Gosford – Wyong | 374 | 130.4 | 398 | 136.0 | 407 | 136.8 |
| Hunter | 965 | 168.9 | 940 | 163.0 | 782 | 134.4 |
| Illawarra | 566 | 147.2 | 534 | 137.2 | 604 | 153.6 |
| Richmond – Tweed | 367 | 175.8 | 388 | 183.8 | 402 | 188.9 |
| Mid-North Coast | 378 | 139.6 | 379 | 138.9 | 306 | 111.2 |
| Northern | 257 | 147.2 | 245 | 141.5 | 161 | 93.5 |
| North Western | 482 | 411.1 | 392 | 335.4 | 240 | 206.1 |
| Central West | 290 | 167.7 | 313 | 181.2 | 281 | 162.2 |
| South Eastern | 250 | 138.0 | 270 | 148.0 | 284 | 154.0 |
| Murrumbidgee | 195 | 131.2 | 179 | 120.4 | 236 | 158.6 |
| Murray | 137 | 124.0 | 199 | 181.0 | 167 | 151.6 |
| Far West | 57 | 235.7 | 61 | 258.6 | 22 | 94.8 |
| New South Wales* | 11,834 | 185.0 | 11,955 | 185.0 | 11,292 | 172.9 |

* The total for New South Wales includes 8 recorded incidents in 1999, 16 recorded incidents in 2000 and 17 recorded incidents in 2001 where the offence occurred in a custodial institution.

TABLE 4.11 RECORDED CRIMINAL INCIDENTS, 1999 TO 2001: STATISTICAL DIVISION**MOTOR VEHICLE THEFT**

| <i>Statistical Division where offence occurred</i> | <i>Recorded criminal incidents</i> | | | | | |
|--|------------------------------------|--|---------------|--|---------------|--|
| | <i>1999</i> | | <i>2000</i> | | <i>2001</i> | |
| | <i>Number</i> | <i>Rate per 100,000 population</i> | <i>Number</i> | <i>Rate per 100,000 population</i> | <i>Number</i> | <i>Rate per 100,000 population</i> |
| Sydney | 36,288 | 900.0 | 39,043 | 955.8 | 39,111 | 944.5 |
| Inner Sydney | 4,793 | 1,676.3 | 4,907 | 1,691.4 | 5,157 | 1,749.1 |
| Eastern Suburbs | 1,987 | 808.8 | 2,072 | 841.3 | 2,443 | 987.3 |
| St George – Sutherland | 3,204 | 754.9 | 3,334 | 775.6 | 3,372 | 774.0 |
| Canterbury – Bankstown | 3,726 | 1,211.1 | 3,894 | 1,251.3 | 3,997 | 1,272.0 |
| Fairfield – Liverpool | 4,081 | 1,224.8 | 4,765 | 1,399.6 | 3,932 | 1,132.4 |
| Outer South Western Sydney | 2,262 | 1,001.7 | 2,667 | 1,165.7 | 2,673 | 1,152.4 |
| Inner Western Sydney | 1,576 | 983.1 | 1,667 | 1,026.8 | 1,726 | 1,050.1 |
| Central Western Sydney | 3,587 | 1,237.2 | 3,777 | 1,288.4 | 3,988 | 1,339.4 |
| Outer Western Sydney | 2,440 | 784.4 | 2,618 | 834.5 | 2,592 | 820.4 |
| Blacktown | 2,832 | 1,114.0 | 3,051 | 1,172.1 | 2,743 | 1,049.9 |
| Lower Northern Sydney | 1,614 | 557.4 | 1,686 | 576.9 | 1,674 | 565.2 |
| Central Northern Sydney | 1,073 | 275.4 | 1,328 | 336.5 | 1,371 | 338.5 |
| Northern Beaches | 971 | 426.4 | 979 | 427.0 | 1,103 | 476.5 |
| Gosford – Wyong | 2,142 | 746.8 | 2,298 | 785.5 | 2,340 | 786.3 |
| Hunter | 3,760 | 658.0 | 4,821 | 835.8 | 4,617 | 793.3 |
| Illawarra | 3,731 | 970.1 | 3,853 | 989.9 | 4,911 | 1,248.7 |
| Richmond – Tweed | 871 | 417.2 | 836 | 396.0 | 812 | 381.6 |
| Mid-North Coast | 892 | 329.5 | 1,002 | 367.1 | 1,050 | 381.7 |
| Northern | 414 | 237.2 | 436 | 251.7 | 405 | 235.1 |
| North Western | 523 | 446.1 | 641 | 548.4 | 756 | 649.3 |
| Central West | 521 | 301.2 | 610 | 353.2 | 475 | 274.2 |
| South Eastern | 493 | 272.1 | 465 | 254.9 | 519 | 281.4 |
| Murrumbidgee | 529 | 355.9 | 468 | 314.7 | 529 | 355.5 |
| Murray | 302 | 273.4 | 356 | 323.8 | 414 | 375.9 |
| Far West | 73 | 301.8 | 87 | 368.9 | 124 | 534.6 |
| New South Wales* | 48,401 | 756.7 | 52,626 | 814.3 | 53,727 | 822.5 |

* The total for New South Wales includes 4 recorded incidents in 1999, 8 recorded incidents in 2000 and 4 recorded incidents in 2001 where the offence occurred in a custodial institution.

TABLE 4.12 RECORDED CRIMINAL INCIDENTS, 1999 TO 2001: STATISTICAL DIVISION**STEAL FROM MOTOR VEHICLE**

| <i>Statistical Division where offence occurred</i> | <i>Recorded criminal incidents</i> | | | | | |
|--|------------------------------------|--|---------------|--|---------------|--|
| | <i>1999</i> | | <i>2000</i> | | <i>2001</i> | |
| | <i>Number</i> | <i>Rate per 100,000 population</i> | <i>Number</i> | <i>Rate per 100,000 population</i> | <i>Number</i> | <i>Rate per 100,000 population</i> |
| Sydney | 55,425 | 1,374.6 | 66,009 | 1,615.9 | 64,374 | 1,554.6 |
| Inner Sydney | 12,636 | 4,419.4 | 15,492 | 5,340.1 | 15,453 | 5,241.2 |
| Eastern Suburbs | 3,889 | 1,583.0 | 3,993 | 1,621.3 | 4,503 | 1,819.9 |
| St George – Sutherland | 4,517 | 1,064.2 | 5,569 | 1,295.6 | 4,886 | 1,121.6 |
| Canterbury – Bankstown | 3,788 | 1,231.3 | 4,646 | 1,493.0 | 3,656 | 1,163.5 |
| Fairfield – Liverpool | 4,197 | 1,259.6 | 4,849 | 1,424.3 | 4,180 | 1,203.8 |
| Outer South Western Sydney | 2,077 | 919.8 | 2,739 | 1,197.2 | 3,173 | 1,368.0 |
| Inner Western Sydney | 2,095 | 1,306.9 | 2,400 | 1,478.2 | 2,442 | 1,485.7 |
| Central Western Sydney | 4,106 | 1,416.2 | 4,931 | 1,682.0 | 4,435 | 1,489.6 |
| Outer Western Sydney | 3,335 | 1,072.2 | 3,478 | 1,108.6 | 4,137 | 1,309.4 |
| Blacktown | 2,925 | 1,150.6 | 3,694 | 1,419.2 | 3,139 | 1,201.5 |
| Lower Northern Sydney | 4,514 | 1,558.8 | 4,964 | 1,698.4 | 4,821 | 1,627.7 |
| Central Northern Sydney | 2,386 | 612.4 | 3,149 | 797.9 | 3,200 | 790.2 |
| Northern Beaches | 2,597 | 1,140.6 | 2,450 | 1,068.5 | 2,806 | 1,212.3 |
| Gosford – Wyong | 2,363 | 823.9 | 3,655 | 1,249.4 | 3,543 | 1,190.6 |
| Hunter | 6,148 | 1,075.8 | 7,625 | 1,322.0 | 6,830 | 1,173.6 |
| Illawarra | 4,974 | 1,293.3 | 5,426 | 1,394.1 | 5,911 | 1,503.0 |
| Richmond – Tweed | 1,733 | 830.0 | 1,973 | 934.5 | 1,964 | 922.9 |
| Mid-North Coast | 2,060 | 761.0 | 2,370 | 868.4 | 2,151 | 781.9 |
| Northern | 1,328 | 760.8 | 1,386 | 800.3 | 1,579 | 916.8 |
| North Western | 1,327 | 1,131.8 | 1,730 | 1,480.2 | 2,096 | 1,800.0 |
| Central West | 1,278 | 738.9 | 1,367 | 791.4 | 1,567 | 904.5 |
| South Eastern | 1,637 | 903.5 | 1,196 | 655.6 | 1,364 | 739.5 |
| Murrumbidgee | 1,072 | 721.3 | 1,027 | 690.6 | 1,309 | 879.6 |
| Murray | 691 | 625.5 | 913 | 830.4 | 1,039 | 943.5 |
| Far West | 274 | 1,132.8 | 286 | 1,212.7 | 280 | 1,207.1 |
| New South Wales* | 77,948 | 1,218.6 | 91,313 | 1,413.0 | 90,468 | 1,384.9 |

* The total for New South Wales includes 1 recorded incident in 1999, 5 recorded incidents in 2000 and 4 recorded incidents in 2001 where the offence occurred in a custodial institution.

TABLE 4.13 RECORDED CRIMINAL INCIDENTS, 1999 TO 2001: STATISTICAL DIVISION**STEAL FROM RETAIL STORE**

| <i>Statistical Division where offence occurred</i> | <i>Recorded criminal incidents</i> | | | | | |
|--|------------------------------------|--|---------------|--|---------------|--|
| | <i>1999</i> | | <i>2000</i> | | <i>2001</i> | |
| | <i>Number</i> | <i>Rate per 100,000 population</i> | <i>Number</i> | <i>Rate per 100,000 population</i> | <i>Number</i> | <i>Rate per 100,000 population</i> |
| Sydney | 13,587 | 337.0 | 14,168 | 346.8 | 13,246 | 319.9 |
| Inner Sydney | 2,323 | 812.5 | 2,533 | 873.1 | 2,356 | 799.1 |
| Eastern Suburbs | 759 | 308.9 | 771 | 313.1 | 858 | 346.8 |
| St George – Sutherland | 1,126 | 265.3 | 1,127 | 262.2 | 1,136 | 260.8 |
| Canterbury – Bankstown | 923 | 300.0 | 886 | 284.7 | 840 | 267.3 |
| Fairfield – Liverpool | 1,189 | 356.8 | 1,286 | 377.7 | 941 | 271.0 |
| Outer South Western Sydney | 763 | 337.9 | 716 | 313.0 | 641 | 276.4 |
| Inner Western Sydney | 409 | 255.1 | 447 | 275.3 | 443 | 269.5 |
| Central Western Sydney | 1,445 | 498.4 | 1,605 | 547.5 | 1,328 | 446.0 |
| Outer Western Sydney | 1,120 | 360.1 | 931 | 296.8 | 954 | 301.9 |
| Blacktown | 1,056 | 415.4 | 1,226 | 471.0 | 968 | 370.5 |
| Lower Northern Sydney | 818 | 282.5 | 815 | 278.8 | 796 | 268.8 |
| Central Northern Sydney | 496 | 127.3 | 443 | 112.2 | 524 | 129.4 |
| Northern Beaches | 473 | 207.7 | 522 | 227.7 | 410 | 177.1 |
| Gosford – Wyong | 687 | 239.5 | 860 | 294.0 | 1,051 | 353.2 |
| Hunter | 1,456 | 254.8 | 1,685 | 292.1 | 1,828 | 314.1 |
| Illawarra | 1,333 | 346.6 | 1,205 | 309.6 | 1,216 | 309.2 |
| Richmond – Tweed | 778 | 372.6 | 675 | 319.7 | 751 | 352.9 |
| Mid-North Coast | 1,103 | 407.5 | 926 | 339.3 | 869 | 315.9 |
| Northern | 451 | 258.4 | 483 | 278.9 | 511 | 296.7 |
| North Western | 537 | 458.0 | 461 | 394.4 | 402 | 345.2 |
| Central West | 600 | 346.9 | 501 | 290.1 | 517 | 298.4 |
| South Eastern | 481 | 265.5 | 494 | 270.8 | 475 | 257.5 |
| Murrumbidgee | 410 | 275.9 | 367 | 246.8 | 447 | 300.4 |
| Murray | 267 | 241.7 | 269 | 244.7 | 309 | 280.6 |
| Far West | 78 | 322.5 | 49 | 207.8 | 77 | 331.9 |
| New South Wales | 21,081 | 329.6 | 21,283 | 329.3 | 20,648 | 316.1 |

TABLE 4.14 RECORDED CRIMINAL INCIDENTS, 1999 TO 2001: STATISTICAL DIVISION**STEAL FROM DWELLING**

| <i>Statistical Division where offence occurred</i> | <i>Recorded criminal incidents</i> | | | | | |
|--|------------------------------------|--|---------------|--|---------------|--|
| | <i>1999</i> | | <i>2000</i> | | <i>2001</i> | |
| | <i>Number</i> | <i>Rate per 100,000 population</i> | <i>Number</i> | <i>Rate per 100,000 population</i> | <i>Number</i> | <i>Rate per 100,000 population</i> |
| Sydney | 15,957 | 395.8 | 17,169 | 420.3 | 16,530 | 399.2 |
| Inner Sydney | 2,110 | 738.0 | 2,308 | 795.6 | 2,343 | 794.7 |
| Eastern Suburbs | 1,151 | 468.5 | 1,309 | 531.5 | 1,483 | 599.4 |
| St George – Sutherland | 1,325 | 312.2 | 1,407 | 327.3 | 1,251 | 287.2 |
| Canterbury – Bankstown | 749 | 243.5 | 789 | 253.5 | 780 | 248.2 |
| Fairfield – Liverpool | 1,106 | 331.9 | 1,096 | 321.9 | 976 | 281.1 |
| Outer South Western Sydney | 1,195 | 529.2 | 1,185 | 518.0 | 1,082 | 466.5 |
| Inner Western Sydney | 553 | 345.0 | 582 | 358.5 | 552 | 335.8 |
| Central Western Sydney | 938 | 323.5 | 984 | 335.7 | 950 | 319.1 |
| Outer Western Sydney | 1,233 | 396.4 | 1,266 | 403.5 | 1,254 | 396.9 |
| Blacktown | 1,192 | 468.9 | 1,302 | 500.2 | 1,190 | 455.5 |
| Lower Northern Sydney | 1,064 | 367.4 | 1,140 | 390.0 | 1,088 | 367.3 |
| Central Northern Sydney | 1,154 | 296.2 | 1,226 | 310.6 | 1,180 | 291.4 |
| Northern Beaches | 843 | 370.2 | 1,000 | 436.1 | 956 | 413.0 |
| Gosford – Wyong | 1,344 | 468.6 | 1,575 | 538.4 | 1,445 | 485.6 |
| Hunter | 3,446 | 603.0 | 3,632 | 629.7 | 3,533 | 607.1 |
| Illawarra | 1,946 | 506.0 | 2,202 | 565.8 | 2,178 | 553.8 |
| Richmond – Tweed | 1,394 | 667.7 | 1,493 | 707.1 | 1,442 | 677.6 |
| Mid-North Coast | 1,551 | 573.0 | 1,652 | 605.3 | 1,530 | 556.2 |
| Northern | 1,163 | 666.3 | 1,102 | 636.3 | 1,048 | 608.5 |
| North Western | 920 | 784.6 | 879 | 752.1 | 901 | 773.8 |
| Central West | 1,233 | 712.9 | 1,212 | 701.7 | 1,215 | 701.3 |
| South Eastern | 1,019 | 562.4 | 973 | 533.3 | 1,068 | 579.1 |
| Murrumbidgee | 878 | 590.8 | 939 | 631.4 | 1,023 | 687.5 |
| Murray | 665 | 602.0 | 717 | 652.1 | 732 | 664.7 |
| Far West | 249 | 1,029.4 | 309 | 1,310.2 | 251 | 1,082.0 |
| New South Wales | 30,421 | 475.6 | 32,279 | 499.5 | 31,451 | 481.5 |

TABLE 4.15 RECORDED CRIMINAL INCIDENTS, 1999 TO 2001: STATISTICAL DIVISION**STEAL FROM PERSON**

| <i>Statistical Division where offence occurred</i> | <i>Recorded criminal incidents</i> | | | | | |
|--|------------------------------------|--|---------------|--|---------------|--|
| | <i>1999</i> | | <i>2000</i> | | <i>2001</i> | |
| | <i>Number</i> | <i>Rate per 100,000 population</i> | <i>Number</i> | <i>Rate per 100,000 population</i> | <i>Number</i> | <i>Rate per 100,000 population</i> |
| Sydney | 10,036 | 248.9 | 11,196 | 274.1 | 14,367 | 347.0 |
| Inner Sydney | 4,355 | 1,523.1 | 4,831 | 1,665.2 | 6,627 | 2,247.7 |
| Eastern Suburbs | 598 | 243.4 | 652 | 264.7 | 893 | 360.9 |
| St George – Sutherland | 506 | 119.2 | 586 | 136.3 | 778 | 178.6 |
| Canterbury – Bankstown | 690 | 224.3 | 728 | 233.9 | 729 | 232.0 |
| Fairfield – Liverpool | 638 | 191.5 | 734 | 215.6 | 817 | 235.3 |
| Outer South Western Sydney | 226 | 100.1 | 279 | 121.9 | 341 | 147.0 |
| Inner Western Sydney | 567 | 353.7 | 561 | 345.5 | 643 | 391.2 |
| Central Western Sydney | 691 | 238.3 | 747 | 254.8 | 952 | 319.7 |
| Outer Western Sydney | 303 | 97.4 | 358 | 114.1 | 410 | 129.8 |
| Blacktown | 379 | 149.1 | 439 | 168.7 | 525 | 200.9 |
| Lower Northern Sydney | 448 | 154.7 | 529 | 181.0 | 691 | 233.3 |
| Central Northern Sydney | 204 | 52.4 | 218 | 55.2 | 294 | 72.6 |
| Northern Beaches | 252 | 110.7 | 302 | 131.7 | 412 | 178.0 |
| Gosford – Wyong | 179 | 62.4 | 232 | 79.3 | 255 | 85.7 |
| Hunter | 365 | 63.9 | 436 | 75.6 | 535 | 91.9 |
| Illawarra | 374 | 97.2 | 463 | 119.0 | 652 | 165.8 |
| Richmond – Tweed | 135 | 64.7 | 144 | 68.2 | 202 | 94.9 |
| Mid-North Coast | 151 | 55.8 | 164 | 60.1 | 187 | 68.0 |
| Northern | 103 | 59.0 | 115 | 66.4 | 119 | 69.1 |
| North Western | 120 | 102.3 | 170 | 145.5 | 140 | 120.2 |
| Central West | 106 | 61.3 | 87 | 50.4 | 90 | 51.9 |
| South Eastern | 79 | 43.6 | 87 | 47.7 | 114 | 61.8 |
| Murrumbidgee | 49 | 33.0 | 47 | 31.6 | 85 | 57.1 |
| Murray | 52 | 47.1 | 46 | 41.8 | 55 | 49.9 |
| Far West | 20 | 82.7 | 16 | 67.8 | 27 | 116.4 |
| New South Wales* | 11,592 | 181.2 | 12,972 | 200.7 | 16,576 | 253.7 |

* The total for New South Wales includes 2 recorded incidents in 1999, 1 recorded incident in 2000 and 3 recorded incidents in 2001 where the offence occurred in a custodial institution.

TABLE 4.16 RECORDED CRIMINAL INCIDENTS, 1999 TO 2001: STATISTICAL DIVISION**FRAUD**

| <i>Statistical Division where offence occurred</i> | <i>Recorded criminal incidents</i> | | | | | |
|--|------------------------------------|--|---------------|--|---------------|--|
| | <i>1999</i> | | <i>2000</i> | | <i>2001</i> | |
| | <i>Number</i> | <i>Rate per 100,000 population</i> | <i>Number</i> | <i>Rate per 100,000 population</i> | <i>Number</i> | <i>Rate per 100,000 population</i> |
| Sydney | 18,211 | 451.7 | 18,842 | 461.3 | 24,211 | 584.7 |
| Inner Sydney | 4,056 | 1,418.6 | 3,668 | 1,264.4 | 4,508 | 1,529.0 |
| Eastern Suburbs | 1,133 | 461.2 | 1,039 | 421.9 | 1,247 | 504.0 |
| St George – Sutherland | 1,249 | 294.3 | 1,204 | 280.1 | 1,870 | 429.3 |
| Canterbury – Bankstown | 1,243 | 404.0 | 1,606 | 516.1 | 2,300 | 732.0 |
| Fairfield – Liverpool | 1,826 | 548.0 | 1,879 | 551.9 | 2,252 | 648.6 |
| Outer South Western Sydney | 779 | 345.0 | 893 | 390.3 | 986 | 425.1 |
| Inner Western Sydney | 707 | 441.0 | 830 | 511.2 | 1,101 | 669.8 |
| Central Western Sydney | 1,566 | 540.1 | 1,675 | 571.4 | 2,350 | 789.3 |
| Outer Western Sydney | 961 | 309.0 | 1,219 | 388.6 | 1,459 | 461.8 |
| Blacktown | 1,009 | 396.9 | 1,456 | 559.4 | 1,873 | 716.9 |
| Lower Northern Sydney | 1,334 | 460.7 | 1,139 | 389.7 | 1,579 | 533.1 |
| Central Northern Sydney | 643 | 165.0 | 688 | 174.3 | 848 | 209.4 |
| Northern Beaches | 620 | 272.3 | 649 | 283.0 | 869 | 375.4 |
| Gosford – Wyong | 1,085 | 378.3 | 897 | 306.6 | 969 | 325.6 |
| Hunter | 1,728 | 302.4 | 2,110 | 365.8 | 1,808 | 310.7 |
| Illawarra | 907 | 235.8 | 1,145 | 294.2 | 1,230 | 312.8 |
| Richmond – Tweed | 890 | 426.3 | 711 | 336.7 | 731 | 343.5 |
| Mid-North Coast | 1,205 | 445.1 | 1,244 | 455.8 | 903 | 328.3 |
| Northern | 725 | 415.4 | 580 | 334.9 | 401 | 232.8 |
| North Western | 775 | 661.0 | 369 | 315.7 | 382 | 328.1 |
| Central West | 614 | 355.0 | 668 | 386.7 | 582 | 335.9 |
| South Eastern | 592 | 326.7 | 700 | 383.7 | 709 | 384.4 |
| Murrumbidgee | 777 | 522.8 | 721 | 484.8 | 741 | 498.0 |
| Murray | 485 | 439.0 | 457 | 415.7 | 342 | 310.6 |
| Far West | 80 | 330.7 | 53 | 224.7 | 50 | 215.5 |
| New South Wales* | 27,011 | 422.3 | 27,607 | 427.2 | 32,098 | 491.4 |

* The total for New South Wales includes 22 recorded incidents in 1999, 7 recorded incidents in 2000 and 8 recorded incidents in 2001 where the offence occurred in a custodial institution.

TABLE 4.17 RECORDED CRIMINAL INCIDENTS, 1999 TO 2001: STATISTICAL DIVISION**MALICIOUS DAMAGE TO PROPERTY**

| <i>Statistical Division where offence occurred</i> | <i>Recorded criminal incidents</i> | | | | | |
|--|------------------------------------|--|---------------|--|---------------|--|
| | <i>1999</i> | | <i>2000</i> | | <i>2001</i> | |
| | <i>Number</i> | <i>Rate per 100,000 population</i> | <i>Number</i> | <i>Rate per 100,000 population</i> | <i>Number</i> | <i>Rate per 100,000 population</i> |
| Sydney | 52,850 | 1,310.8 | 54,134 | 1,325.2 | 54,350 | 1,312.5 |
| Inner Sydney | 6,524 | 2,281.7 | 6,016 | 2,073.7 | 6,271 | 2,126.9 |
| Eastern Suburbs | 2,787 | 1,134.4 | 3,041 | 1,234.8 | 3,188 | 1,288.4 |
| St George – Sutherland | 5,413 | 1,275.3 | 4,965 | 1,155.1 | 4,888 | 1,122.0 |
| Canterbury – Bankstown | 3,656 | 1,188.4 | 3,479 | 1,118.0 | 3,286 | 1,045.8 |
| Fairfield – Liverpool | 3,958 | 1,187.8 | 4,303 | 1,263.9 | 4,137 | 1,191.5 |
| Outer South Western Sydney | 4,490 | 1,988.4 | 4,740 | 2,071.8 | 4,828 | 2,081.6 |
| Inner Western Sydney | 1,569 | 978.8 | 1,429 | 880.2 | 1,402 | 853.0 |
| Central Western Sydney | 3,206 | 1,105.8 | 3,487 | 1,189.5 | 3,466 | 1,164.1 |
| Outer Western Sydney | 5,033 | 1,618.1 | 5,023 | 1,601.1 | 4,937 | 1,562.6 |
| Blacktown | 4,048 | 1,592.3 | 4,248 | 1,632.0 | 4,260 | 1,630.6 |
| Lower Northern Sydney | 2,774 | 957.9 | 2,850 | 975.1 | 2,797 | 944.3 |
| Central Northern Sydney | 3,243 | 832.3 | 3,402 | 862.0 | 3,351 | 827.4 |
| Northern Beaches | 2,310 | 1,014.5 | 2,584 | 1,126.9 | 2,824 | 1,220.1 |
| Gosford – Wyong | 3,839 | 1,338.5 | 4,567 | 1,561.2 | 4,715 | 1,584.4 |
| Hunter | 8,629 | 1,510.0 | 9,658 | 1,674.5 | 9,788 | 1,681.9 |
| Illawarra | 7,227 | 1,879.2 | 6,958 | 1,787.7 | 6,929 | 1,761.9 |
| Richmond – Tweed | 2,574 | 1,232.8 | 2,761 | 1,307.7 | 2,698 | 1,267.8 |
| Mid-North Coast | 4,024 | 1,486.5 | 4,089 | 1,498.2 | 4,132 | 1,502.0 |
| Northern | 3,407 | 1,951.9 | 3,556 | 2,053.2 | 3,332 | 1,934.6 |
| North Western | 2,508 | 2,139.0 | 2,648 | 2,265.6 | 3,122 | 2,681.2 |
| Central West | 2,970 | 1,717.1 | 2,811 | 1,627.5 | 3,287 | 1,897.3 |
| South Eastern | 3,115 | 1,719.3 | 2,989 | 1,638.4 | 3,167 | 1,717.1 |
| Murrumbidgee | 2,606 | 1,753.5 | 2,532 | 1,702.6 | 2,828 | 1,900.4 |
| Murray | 1,653 | 1,496.4 | 1,664 | 1,513.5 | 1,820 | 1,652.6 |
| Far West | 594 | 2,455.8 | 623 | 2,641.6 | 602 | 2,595.2 |
| New South Wales* | 92,264 | 1,442.4 | 94,564 | 1,463.3 | 96,145 | 1,471.8 |

* The total for New South Wales includes 107 recorded incidents in 1999, 141 recorded incidents in 2000 and 90 recorded incidents in 2001 where the offence occurred in a custodial institution.

TABLE 4.18 RECORDED CRIMINAL INCIDENTS, 1999 TO 2001: STATISTICAL DIVISION**POSSESSION AND/OR USE OF COCAINE**

| <i>Statistical Division where offence occurred</i> | <i>Recorded criminal incidents</i> | | | | | |
|--|------------------------------------|--|---------------|--|---------------|--|
| | <i>1999</i> | | <i>2000</i> | | <i>2001</i> | |
| | <i>Number</i> | <i>Rate per 100,000 population</i> | <i>Number</i> | <i>Rate per 100,000 population</i> | <i>Number</i> | <i>Rate per 100,000 population</i> |
| Sydney | 188 | 4.7 | 181 | 4.4 | 437 | 10.6 |
| Inner Sydney | 101 | 35.3 | 79 | 27.2 | 208 | 70.5 |
| Eastern Suburbs | 10 | 4.1 | 10 | 4.1 | 11 | 4.4 |
| St George – Sutherland | 9 | 2.1 | 13 | 3.0 | 9 | 2.1 |
| Canterbury – Bankstown | 5 | 1.6 | 21 | 6.7 | 25 | 8.0 |
| Fairfield – Liverpool | 30 | 9.0 | 25 | 7.3 | 112 | 32.3 |
| Outer South Western Sydney | 0 | 0.0 | 1 | 0.4 | 6 | 2.6 |
| Inner Western Sydney | 6 | 3.7 | 8 | 4.9 | 7 | 4.3 |
| Central Western Sydney | 7 | 2.4 | 2 | 0.7 | 22 | 7.4 |
| Outer Western Sydney | 2 | 0.6 | 1 | 0.3 | 3 | 0.9 |
| Blacktown | 2 | 0.8 | 1 | 0.4 | 5 | 1.9 |
| Lower Northern Sydney | 11 | 3.8 | 9 | 3.1 | 6 | 2.0 |
| Central Northern Sydney | 0 | 0.0 | 2 | 0.5 | 8 | 2.0 |
| Northern Beaches | 1 | 0.4 | 7 | 3.1 | 9 | 3.9 |
| Gosford – Wyong | 4 | 1.4 | 2 | 0.7 | 6 | 2.0 |
| Hunter | 2 | 0.3 | 1 | 0.2 | 3 | 0.5 |
| Illawarra | 2 | 0.5 | 3 | 0.8 | 3 | 0.8 |
| Richmond – Tweed | 1 | 0.5 | 2 | 0.9 | 7 | 3.3 |
| Mid-North Coast | 2 | 0.7 | 8 | 2.9 | 4 | 1.5 |
| Northern | 0 | 0.0 | 3 | 1.7 | 1 | 0.6 |
| North Western | 0 | 0.0 | 0 | 0.0 | 0 | 0.0 |
| Central West | 1 | 0.6 | 3 | 1.7 | 0 | 0.0 |
| South Eastern | 2 | 1.1 | 4 | 2.2 | 1 | 0.5 |
| Murrumbidgee | 1 | 0.7 | 2 | 1.3 | 0 | 0.0 |
| Murray | 1 | 0.9 | 0 | 0.0 | 0 | 0.0 |
| Far West | 0 | 0.0 | 0 | 0.0 | 0 | 0.0 |
| New South Wales* | 200 | 3.1 | 208 | 3.2 | 460 | 7.0 |

* The total for New South Wales includes 1 recorded incident in 2000 and 4 recorded incidents in 2001 where the offence occurred in a custodial institution.

TABLE 4.19 RECORDED CRIMINAL INCIDENTS, 1999 TO 2001: STATISTICAL DIVISION**POSSESSION AND/OR USE OF NARCOTICS**

| <i>Statistical Division where offence occurred</i> | <i>Recorded criminal incidents</i> | | | | | |
|--|------------------------------------|--|---------------|--|---------------|--|
| | <i>1999</i> | | <i>2000</i> | | <i>2001</i> | |
| | <i>Number</i> | <i>Rate per 100,000 population</i> | <i>Number</i> | <i>Rate per 100,000 population</i> | <i>Number</i> | <i>Rate per 100,000 population</i> |
| Sydney | 2,408 | 59.7 | 1,857 | 45.5 | 805 | 19.4 |
| Inner Sydney | 573 | 200.4 | 463 | 159.6 | 240 | 81.4 |
| Eastern Suburbs | 24 | 9.8 | 30 | 12.2 | 9 | 3.6 |
| St George – Sutherland | 73 | 17.2 | 78 | 18.1 | 36 | 8.3 |
| Canterbury – Bankstown | 135 | 43.9 | 130 | 41.8 | 51 | 16.2 |
| Fairfield – Liverpool | 1,129 | 338.8 | 796 | 233.8 | 306 | 88.1 |
| Outer South Western Sydney | 41 | 18.2 | 26 | 11.4 | 6 | 2.6 |
| Inner Western Sydney | 58 | 36.2 | 53 | 32.6 | 17 | 10.3 |
| Central Western Sydney | 132 | 45.5 | 95 | 32.4 | 36 | 12.1 |
| Outer Western Sydney | 48 | 15.4 | 36 | 11.5 | 9 | 2.8 |
| Blacktown | 47 | 18.5 | 35 | 13.4 | 43 | 16.5 |
| Lower Northern Sydney | 26 | 9.0 | 28 | 9.6 | 4 | 1.4 |
| Central Northern Sydney | 32 | 8.2 | 14 | 3.5 | 8 | 2.0 |
| Northern Beaches | 33 | 14.5 | 14 | 6.1 | 10 | 4.3 |
| Gosford – Wyong | 57 | 19.9 | 59 | 20.2 | 30 | 10.1 |
| Hunter | 119 | 20.8 | 131 | 22.7 | 57 | 9.8 |
| Illawarra | 73 | 19.0 | 51 | 13.1 | 37 | 9.4 |
| Richmond – Tweed | 107 | 51.2 | 162 | 76.7 | 88 | 41.4 |
| Mid-North Coast | 78 | 28.8 | 74 | 27.1 | 32 | 11.6 |
| Northern | 48 | 27.5 | 18 | 10.4 | 3 | 1.7 |
| North Western | 26 | 22.2 | 7 | 6.0 | 6 | 5.2 |
| Central West | 37 | 21.4 | 48 | 27.8 | 14 | 8.1 |
| South Eastern | 23 | 12.7 | 37 | 20.3 | 19 | 10.3 |
| Murrumbidgee | 11 | 7.4 | 15 | 10.1 | 4 | 2.7 |
| Murray | 6 | 5.4 | 6 | 5.5 | 5 | 4.5 |
| Far West | 3 | 12.4 | 1 | 4.2 | 1 | 4.3 |
| New South Wales* | 3,013 | 47.1 | 2,483 | 38.4 | 1,094 | 16.7 |

* The total for New South Wales includes 74 recorded incidents in 1999, 76 recorded incidents in 2000 and 23 recorded incidents in 2001 where the offence occurred in a custodial institution.

TABLE 4.20 RECORDED CRIMINAL INCIDENTS, 1999 TO 2001: STATISTICAL DIVISION**POSSESSION AND/OR USE OF CANNABIS**

| <i>Statistical Division where offence occurred</i> | <i>Recorded criminal incidents</i> | | | | | |
|--|------------------------------------|--|---------------|--|---------------|--|
| | <i>1999</i> | | <i>2000</i> | | <i>2001</i> | |
| | <i>Number</i> | <i>Rate per 100,000 population</i> | <i>Number</i> | <i>Rate per 100,000 population</i> | <i>Number</i> | <i>Rate per 100,000 population</i> |
| Sydney | 4,960 | 123.0 | 4,744 | 116.1 | 7,743 | 187.0 |
| Inner Sydney | 895 | 313.0 | 1,255 | 432.6 | 2,290 | 776.7 |
| Eastern Suburbs | 158 | 64.3 | 173 | 70.2 | 302 | 122.1 |
| St George – Sutherland | 388 | 91.4 | 331 | 77.0 | 514 | 118.0 |
| Canterbury – Bankstown | 258 | 83.9 | 264 | 84.8 | 301 | 95.8 |
| Fairfield – Liverpool | 490 | 147.1 | 301 | 88.4 | 437 | 125.9 |
| Outer South Western Sydney | 265 | 117.4 | 220 | 96.2 | 431 | 185.8 |
| Inner Western Sydney | 120 | 74.9 | 102 | 62.8 | 210 | 127.8 |
| Central Western Sydney | 434 | 149.7 | 322 | 109.8 | 576 | 193.5 |
| Outer Western Sydney | 526 | 169.1 | 436 | 139.0 | 563 | 178.2 |
| Blacktown | 496 | 195.1 | 367 | 141.0 | 676 | 258.7 |
| Lower Northern Sydney | 233 | 80.5 | 230 | 78.7 | 303 | 102.3 |
| Central Northern Sydney | 241 | 61.9 | 246 | 62.3 | 444 | 109.6 |
| Northern Beaches | 121 | 53.1 | 170 | 74.1 | 212 | 91.6 |
| Gosford – Wyong | 335 | 116.8 | 327 | 111.8 | 484 | 162.6 |
| Hunter | 974 | 170.4 | 969 | 168.0 | 1,066 | 183.2 |
| Illawarra | 545 | 141.7 | 484 | 124.4 | 643 | 163.5 |
| Richmond – Tweed | 887 | 424.8 | 1,137 | 538.5 | 1,116 | 524.4 |
| Mid-North Coast | 998 | 368.7 | 896 | 328.3 | 819 | 297.7 |
| Northern | 517 | 296.2 | 411 | 237.3 | 481 | 279.3 |
| North Western | 415 | 353.9 | 329 | 281.5 | 302 | 259.4 |
| Central West | 494 | 285.6 | 414 | 239.7 | 403 | 232.6 |
| South Eastern | 635 | 350.5 | 618 | 338.7 | 544 | 295.0 |
| Murrumbidgee | 369 | 248.3 | 368 | 247.5 | 493 | 331.3 |
| Murray | 232 | 210.0 | 292 | 265.6 | 306 | 277.9 |
| Far West | 78 | 322.5 | 69 | 292.6 | 61 | 263.0 |
| New South Wales* | 11,494 | 179.7 | 11,069 | 171.3 | 14,328 | 219.3 |

* The total for New South Wales includes 390 recorded incidents in 1999, 338 recorded incidents in 2000 and 351 recorded incidents in 2001 where the offence occurred in a custodial institution.

TABLE 4.21 RECORDED CRIMINAL INCIDENTS, 1999 TO 2001: STATISTICAL DIVISION**DEALING, TRAFFICKING IN COCAINE**

| <i>Statistical Division where offence occurred</i> | <i>Recorded criminal incidents</i> | | | | | |
|--|------------------------------------|--|---------------|--|---------------|--|
| | <i>1999</i> | | <i>2000</i> | | <i>2001</i> | |
| | <i>Number</i> | <i>Rate per 100,000 population</i> | <i>Number</i> | <i>Rate per 100,000 population</i> | <i>Number</i> | <i>Rate per 100,000 population</i> |
| Sydney | 203 | 5.0 | 93 | 2.3 | 234 | 5.7 |
| Inner Sydney | 157 | 54.9 | 53 | 18.3 | 110 | 37.3 |
| Eastern Suburbs | 18 | 7.3 | 9 | 3.7 | 2 | 0.8 |
| St George – Sutherland | 12 | 2.8 | 2 | 0.5 | 5 | 1.1 |
| Canterbury – Bankstown | 5 | 1.6 | 6 | 1.9 | 16 | 5.1 |
| Fairfield – Liverpool | 6 | 1.8 | 3 | 0.9 | 71 | 20.4 |
| Outer South Western Sydney | 0 | 0.0 | 1 | 0.4 | 0 | 0.0 |
| Inner Western Sydney | 1 | 0.6 | 1 | 0.6 | 1 | 0.6 |
| Central Western Sydney | 2 | 0.7 | 3 | 1.0 | 16 | 5.4 |
| Outer Western Sydney | 0 | 0.0 | 0 | 0.0 | 0 | 0.0 |
| Blacktown | 0 | 0.0 | 0 | 0.0 | 0 | 0.0 |
| Lower Northern Sydney | 1 | 0.3 | 5 | 1.7 | 2 | 0.7 |
| Central Northern Sydney | 0 | 0.0 | 6 | 1.5 | 4 | 1.0 |
| Northern Beaches | 0 | 0.0 | 4 | 1.7 | 6 | 2.6 |
| Gosford – Wyong | 1 | 0.3 | 0 | 0.0 | 1 | 0.3 |
| Hunter | 1 | 0.2 | 2 | 0.3 | 0 | 0.0 |
| Illawarra | 0 | 0.0 | 0 | 0.0 | 8 | 2.0 |
| Richmond – Tweed | 0 | 0.0 | 2 | 0.9 | 4 | 1.9 |
| Mid-North Coast | 0 | 0.0 | 1 | 0.4 | 0 | 0.0 |
| Northern | 0 | 0.0 | 0 | 0.0 | 0 | 0.0 |
| North Western | 0 | 0.0 | 0 | 0.0 | 0 | 0.0 |
| Central West | 0 | 0.0 | 0 | 0.0 | 0 | 0.0 |
| South Eastern | 0 | 0.0 | 1 | 0.5 | 0 | 0.0 |
| Murrumbidgee | 1 | 0.7 | 1 | 0.7 | 0 | 0.0 |
| Murray | 0 | 0.0 | 0 | 0.0 | 0 | 0.0 |
| Far West | 0 | 0.0 | 0 | 0.0 | 0 | 0.0 |
| New South Wales | 205 | 3.2 | 100 | 1.5 | 246 | 3.8 |

TABLE 4.22 RECORDED CRIMINAL INCIDENTS, 1999 TO 2001: STATISTICAL DIVISION**DEALING, TRAFFICKING IN NARCOTICS**

| <i>Statistical Division where offence occurred</i> | <i>Recorded criminal incidents</i> | | | | | |
|--|------------------------------------|--|---------------|--|---------------|--|
| | <i>1999</i> | | <i>2000</i> | | <i>2001</i> | |
| | <i>Number</i> | <i>Rate per 100,000 population</i> | <i>Number</i> | <i>Rate per 100,000 population</i> | <i>Number</i> | <i>Rate per 100,000 population</i> |
| Sydney | 586 | 14.5 | 493 | 12.1 | 344 | 8.3 |
| Inner Sydney | 207 | 72.4 | 197 | 67.9 | 96 | 32.6 |
| Eastern Suburbs | 8 | 3.3 | 8 | 3.2 | 1 | 0.4 |
| St George – Sutherland | 15 | 3.5 | 17 | 4.0 | 7 | 1.6 |
| Canterbury – Bankstown | 28 | 9.1 | 53 | 17.0 | 21 | 6.7 |
| Fairfield – Liverpool | 248 | 74.4 | 175 | 51.4 | 181 | 52.1 |
| Outer South Western Sydney | 9 | 4.0 | 3 | 1.3 | 2 | 0.9 |
| Inner Western Sydney | 16 | 10.0 | 14 | 8.6 | 15 | 9.1 |
| Central Western Sydney | 13 | 4.5 | 10 | 3.4 | 5 | 1.7 |
| Outer Western Sydney | 5 | 1.6 | 6 | 1.9 | 2 | 0.6 |
| Blacktown | 6 | 2.4 | 0 | 0.0 | 1 | 0.4 |
| Lower Northern Sydney | 8 | 2.8 | 3 | 1.0 | 2 | 0.7 |
| Central Northern Sydney | 2 | 0.5 | 2 | 0.5 | 2 | 0.5 |
| Northern Beaches | 14 | 6.1 | 1 | 0.4 | 3 | 1.3 |
| Gosford – Wyong | 7 | 2.4 | 4 | 1.4 | 6 | 2.0 |
| Hunter | 32 | 5.6 | 80 | 13.9 | 15 | 2.6 |
| Illawarra | 39 | 10.1 | 44 | 11.3 | 21 | 5.3 |
| Richmond – Tweed | 80 | 38.3 | 118 | 55.9 | 64 | 30.1 |
| Mid-North Coast | 40 | 14.8 | 27 | 9.9 | 9 | 3.3 |
| Northern | 38 | 21.8 | 7 | 4.0 | 0 | 0.0 |
| North Western | 6 | 5.1 | 3 | 2.6 | 1 | 0.9 |
| Central West | 25 | 14.5 | 53 | 30.7 | 6 | 3.5 |
| South Eastern | 7 | 3.9 | 19 | 10.4 | 2 | 1.1 |
| Murrumbidgee | 6 | 4.0 | 9 | 6.1 | 2 | 1.3 |
| Murray | 2 | 1.8 | 1 | 0.9 | 1 | 0.9 |
| Far West | 0 | 0.0 | 0 | 0.0 | 0 | 0.0 |
| New South Wales* | 864 | 13.5 | 860 | 13.3 | 465 | 7.1 |

* The total for New South Wales includes 3 recorded incidents in 1999 and 6 recorded incidents in 2000 where the offence occurred in a custodial institution.

TABLE 4.23 RECORDED CRIMINAL INCIDENTS, 1999 TO 2001: STATISTICAL DIVISION**DEALING, TRAFFICKING IN CANNABIS**

| <i>Statistical Division where offence occurred</i> | <i>Recorded criminal incidents</i> | | | | | |
|--|------------------------------------|--|---------------|--|---------------|--|
| | <i>1999</i> | | <i>2000</i> | | <i>2001</i> | |
| | <i>Number</i> | <i>Rate per 100,000 population</i> | <i>Number</i> | <i>Rate per 100,000 population</i> | <i>Number</i> | <i>Rate per 100,000 population</i> |
| Sydney | 389 | 9.6 | 387 | 9.5 | 506 | 12.2 |
| Inner Sydney | 128 | 44.8 | 166 | 57.2 | 167 | 56.6 |
| Eastern Suburbs | 12 | 4.9 | 9 | 3.7 | 14 | 5.7 |
| St George – Sutherland | 23 | 5.4 | 18 | 4.2 | 20 | 4.6 |
| Canterbury – Bankstown | 24 | 7.8 | 28 | 9.0 | 39 | 12.4 |
| Fairfield – Liverpool | 35 | 10.5 | 31 | 9.1 | 65 | 18.7 |
| Outer South Western Sydney | 20 | 8.9 | 8 | 3.5 | 24 | 10.3 |
| Inner Western Sydney | 9 | 5.6 | 7 | 4.3 | 11 | 6.7 |
| Central Western Sydney | 26 | 9.0 | 18 | 6.1 | 31 | 10.4 |
| Outer Western Sydney | 28 | 9.0 | 16 | 5.1 | 42 | 13.3 |
| Blacktown | 42 | 16.5 | 20 | 7.7 | 30 | 11.5 |
| Lower Northern Sydney | 11 | 3.8 | 13 | 4.4 | 19 | 6.4 |
| Central Northern Sydney | 10 | 2.6 | 18 | 4.6 | 21 | 5.2 |
| Northern Beaches | 4 | 1.8 | 9 | 3.9 | 9 | 3.9 |
| Gosford – Wyong | 17 | 5.9 | 26 | 8.9 | 14 | 4.7 |
| Hunter | 73 | 12.8 | 51 | 8.8 | 58 | 10.0 |
| Illawarra | 56 | 14.6 | 33 | 8.5 | 38 | 9.7 |
| Richmond – Tweed | 86 | 41.2 | 77 | 36.5 | 62 | 29.1 |
| Mid-North Coast | 98 | 36.2 | 53 | 19.4 | 46 | 16.7 |
| Northern | 39 | 22.3 | 34 | 19.6 | 44 | 25.5 |
| North Western | 37 | 31.6 | 23 | 19.7 | 27 | 23.2 |
| Central West | 36 | 20.8 | 38 | 22.0 | 30 | 17.3 |
| South Eastern | 68 | 37.5 | 79 | 43.3 | 52 | 28.2 |
| Murrumbidgee | 37 | 24.9 | 60 | 40.3 | 76 | 51.1 |
| Murray | 40 | 36.2 | 27 | 24.6 | 34 | 30.9 |
| Far West | 13 | 53.7 | 7 | 29.7 | 2 | 8.6 |
| New South Wales* | 989 | 15.5 | 881 | 13.6 | 987 | 15.1 |

* The total for New South Wales includes 17 recorded incidents in 1999, 12 recorded incidents in 2000 and 12 recorded incidents in 2001 where the offence occurred in a custodial institution.

TABLE 4.24 RECORDED CRIMINAL INCIDENTS, 1999 TO 2001: STATISTICAL DIVISION**CULTIVATING CANNABIS**

| <i>Statistical Division where offence occurred</i> | <i>Recorded criminal incidents</i> | | | | | |
|--|------------------------------------|--|---------------|--|---------------|--|
| | <i>1999</i> | | <i>2000</i> | | <i>2001</i> | |
| | <i>Number</i> | <i>Rate per 100,000 population</i> | <i>Number</i> | <i>Rate per 100,000 population</i> | <i>Number</i> | <i>Rate per 100,000 population</i> |
| Sydney | 490 | 12.2 | 338 | 8.3 | 339 | 8.2 |
| Inner Sydney | 28 | 9.8 | 25 | 8.6 | 16 | 5.4 |
| Eastern Suburbs | 14 | 5.7 | 12 | 4.9 | 8 | 3.2 |
| St George – Sutherland | 38 | 9.0 | 32 | 7.4 | 35 | 8.0 |
| Canterbury – Bankstown | 32 | 10.4 | 17 | 5.5 | 20 | 6.4 |
| Fairfield – Liverpool | 28 | 8.4 | 22 | 6.5 | 19 | 5.5 |
| Outer South Western Sydney | 37 | 16.4 | 32 | 14.0 | 47 | 20.3 |
| Inner Western Sydney | 10 | 6.2 | 4 | 2.5 | 3 | 1.8 |
| Central Western Sydney | 30 | 10.3 | 14 | 4.8 | 30 | 10.1 |
| Outer Western Sydney | 86 | 27.6 | 57 | 18.2 | 40 | 12.7 |
| Blacktown | 53 | 20.8 | 33 | 12.7 | 37 | 14.2 |
| Lower Northern Sydney | 16 | 5.5 | 16 | 5.5 | 8 | 2.7 |
| Central Northern Sydney | 26 | 6.7 | 16 | 4.1 | 17 | 4.2 |
| Northern Beaches | 13 | 5.7 | 11 | 4.8 | 16 | 6.9 |
| Gosford – Wyong | 79 | 27.5 | 47 | 16.1 | 43 | 14.4 |
| Hunter | 189 | 33.1 | 166 | 28.8 | 192 | 33.0 |
| Illawarra | 102 | 26.5 | 121 | 31.1 | 91 | 23.1 |
| Richmond – Tweed | 276 | 132.2 | 292 | 138.3 | 285 | 133.9 |
| Mid-North Coast | 308 | 113.8 | 232 | 85.0 | 229 | 83.2 |
| Northern | 133 | 76.2 | 107 | 61.8 | 82 | 47.6 |
| North Western | 69 | 58.8 | 58 | 49.6 | 38 | 32.6 |
| Central West | 74 | 42.8 | 53 | 30.7 | 66 | 38.1 |
| South Eastern | 186 | 102.7 | 140 | 76.7 | 114 | 61.8 |
| Murrumbidgee | 64 | 43.1 | 78 | 52.5 | 72 | 48.4 |
| Murray | 42 | 38.0 | 60 | 54.6 | 33 | 30.0 |
| Far West | 6 | 24.8 | 16 | 67.8 | 11 | 47.4 |
| New South Wales* | 1,939 | 30.3 | 1,662 | 25.7 | 1,557 | 23.8 |

* The total for New South Wales includes 1 recorded incident in 2000 and 5 recorded incidents in 2001 where the offence occurred in a custodial institution.

TABLE 4.25 RECORDED CRIMINAL INCIDENTS, 1999 TO 2001: STATISTICAL DIVISION**OFFENSIVE CONDUCT**

| <i>Statistical Division where offence occurred</i> | <i>Recorded criminal incidents</i> | | | | | |
|--|------------------------------------|--|---------------|--|---------------|--|
| | <i>1999</i> | | <i>2000</i> | | <i>2001</i> | |
| | <i>Number</i> | <i>Rate per 100,000 population</i> | <i>Number</i> | <i>Rate per 100,000 population</i> | <i>Number</i> | <i>Rate per 100,000 population</i> |
| Sydney | 1,193 | 29.6 | 1,146 | 28.1 | 1,335 | 32.2 |
| Inner Sydney | 269 | 94.1 | 237 | 81.7 | 313 | 106.2 |
| Eastern Suburbs | 46 | 18.7 | 57 | 23.1 | 56 | 22.6 |
| St George – Sutherland | 109 | 25.7 | 71 | 16.5 | 96 | 22.0 |
| Canterbury – Bankstown | 33 | 10.7 | 21 | 6.7 | 30 | 9.5 |
| Fairfield – Liverpool | 82 | 24.6 | 58 | 17.0 | 56 | 16.1 |
| Outer South Western Sydney | 73 | 32.3 | 63 | 27.5 | 65 | 28.0 |
| Inner Western Sydney | 39 | 24.3 | 35 | 21.6 | 23 | 14.0 |
| Central Western Sydney | 72 | 24.8 | 81 | 27.6 | 84 | 28.2 |
| Outer Western Sydney | 97 | 31.2 | 124 | 39.5 | 134 | 42.4 |
| Blacktown | 96 | 37.8 | 121 | 46.5 | 139 | 53.2 |
| Lower Northern Sydney | 79 | 27.3 | 50 | 17.1 | 66 | 22.3 |
| Central Northern Sydney | 46 | 11.8 | 58 | 14.7 | 68 | 16.8 |
| Northern Beaches | 57 | 25.0 | 65 | 28.3 | 83 | 35.9 |
| Gosford – Wyong | 95 | 33.1 | 105 | 35.9 | 122 | 41.0 |
| Hunter | 286 | 50.0 | 302 | 52.4 | 416 | 71.5 |
| Illawarra | 183 | 47.6 | 162 | 41.6 | 140 | 35.6 |
| Richmond – Tweed | 320 | 153.3 | 424 | 200.8 | 386 | 181.4 |
| Mid-North Coast | 320 | 118.2 | 311 | 114.0 | 358 | 130.1 |
| Northern | 292 | 167.3 | 271 | 156.5 | 289 | 167.8 |
| North Western | 323 | 275.5 | 315 | 269.5 | 277 | 237.9 |
| Central West | 228 | 131.8 | 207 | 119.8 | 254 | 146.6 |
| South Eastern | 269 | 148.5 | 224 | 122.8 | 226 | 122.5 |
| Murrumbidgee | 207 | 139.3 | 265 | 178.2 | 351 | 235.9 |
| Murray | 123 | 111.3 | 107 | 97.3 | 135 | 122.6 |
| Far West | 123 | 508.5 | 72 | 305.3 | 58 | 250.0 |
| New South Wales | 3,867 | 60.5 | 3,806 | 58.9 | 4,226 | 64.7 |

* The total for New South Wales includes 1 recorded incident in 2001 where the offence occurred in a custodial institution.

TABLE 4.26 RECORDED CRIMINAL INCIDENTS, 1999 TO 2001: STATISTICAL DIVISION**OFFENSIVE LANGUAGE**

| <i>Statistical Division where offence occurred</i> | <i>Recorded criminal incidents</i> | | | | | |
|--|------------------------------------|--|---------------|--|---------------|--|
| | <i>1999</i> | | <i>2000</i> | | <i>2001</i> | |
| | <i>Number</i> | <i>Rate per 100,000 population</i> | <i>Number</i> | <i>Rate per 100,000 population</i> | <i>Number</i> | <i>Rate per 100,000 population</i> |
| Sydney | 2,475 | 61.4 | 1,875 | 45.9 | 2,254 | 54.4 |
| Inner Sydney | 382 | 133.6 | 283 | 97.6 | 356 | 120.7 |
| Eastern Suburbs | 87 | 35.4 | 66 | 26.8 | 62 | 25.1 |
| St George – Sutherland | 166 | 39.1 | 132 | 30.7 | 152 | 34.9 |
| Canterbury – Bankstown | 119 | 38.7 | 84 | 27.0 | 78 | 24.8 |
| Fairfield – Liverpool | 263 | 78.9 | 160 | 47.0 | 218 | 62.8 |
| Outer South Western Sydney | 215 | 95.2 | 110 | 48.1 | 149 | 64.2 |
| Inner Western Sydney | 37 | 23.1 | 47 | 28.9 | 45 | 27.4 |
| Central Western Sydney | 197 | 67.9 | 174 | 59.4 | 177 | 59.4 |
| Outer Western Sydney | 294 | 94.5 | 190 | 60.6 | 311 | 98.4 |
| Blacktown | 315 | 123.9 | 272 | 104.5 | 269 | 103.0 |
| Lower Northern Sydney | 59 | 20.4 | 47 | 16.1 | 48 | 16.2 |
| Central Northern Sydney | 94 | 24.1 | 85 | 21.5 | 110 | 27.2 |
| Northern Beaches | 64 | 28.1 | 35 | 15.3 | 71 | 30.7 |
| Gosford – Wyong | 183 | 63.8 | 190 | 64.9 | 208 | 69.9 |
| Hunter | 416 | 72.8 | 386 | 66.9 | 426 | 73.2 |
| Illawarra | 322 | 83.7 | 243 | 62.4 | 210 | 53.4 |
| Richmond – Tweed | 446 | 213.6 | 338 | 160.1 | 323 | 151.8 |
| Mid-North Coast | 490 | 181.0 | 426 | 156.1 | 454 | 165.0 |
| Northern | 553 | 316.8 | 478 | 276.0 | 407 | 236.3 |
| North Western | 552 | 470.8 | 346 | 296.0 | 357 | 306.6 |
| Central West | 504 | 291.4 | 321 | 185.8 | 379 | 218.8 |
| South Eastern | 447 | 246.7 | 385 | 211.0 | 360 | 195.2 |
| Murrumbidgee | 307 | 206.6 | 315 | 211.8 | 425 | 285.6 |
| Murray | 207 | 187.4 | 213 | 193.7 | 239 | 217.0 |
| Far West | 173 | 715.2 | 140 | 593.6 | 113 | 487.1 |
| New South Wales | 6,892 | 107.7 | 5,469 | 84.6 | 5,950 | 91.1 |

* The total for New South Wales includes 3 recorded incidents in 2000 and 3 recorded incidents in 2001 where the offence occurred in a custodial institution.

TABLE 4.27 RECORDED CRIMINAL INCIDENTS, 1999 TO 2001: STATISTICAL DIVISION**BREACH APPREHENDED VIOLENCE ORDER**

| <i>Statistical Division where offence occurred</i> | <i>Recorded criminal incidents</i> | | | | | |
|--|------------------------------------|--|---------------|--|---------------|--|
| | <i>1999</i> | | <i>2000</i> | | <i>2001</i> | |
| | <i>Number</i> | <i>Rate per 100,000 population</i> | <i>Number</i> | <i>Rate per 100,000 population</i> | <i>Number</i> | <i>Rate per 100,000 population</i> |
| Sydney | 4,830 | 119.8 | 5,158 | 126.3 | 5,391 | 130.2 |
| Inner Sydney | 476 | 166.5 | 589 | 203.0 | 545 | 184.8 |
| Eastern Suburbs | 266 | 108.3 | 222 | 90.1 | 272 | 109.9 |
| St George – Sutherland | 380 | 89.5 | 459 | 106.8 | 557 | 127.9 |
| Canterbury – Bankstown | 200 | 65.0 | 235 | 75.5 | 353 | 112.3 |
| Fairfield – Liverpool | 415 | 124.5 | 391 | 114.8 | 427 | 123.0 |
| Outer South Western Sydney | 489 | 216.6 | 534 | 233.4 | 505 | 217.7 |
| Inner Western Sydney | 115 | 71.7 | 129 | 79.5 | 169 | 102.8 |
| Central Western Sydney | 356 | 122.8 | 419 | 142.9 | 413 | 138.7 |
| Outer Western Sydney | 609 | 195.8 | 557 | 177.5 | 510 | 161.4 |
| Blacktown | 556 | 218.7 | 601 | 230.9 | 504 | 192.9 |
| Lower Northern Sydney | 158 | 54.6 | 163 | 55.8 | 189 | 63.8 |
| Central Northern Sydney | 173 | 44.4 | 202 | 51.2 | 183 | 45.2 |
| Northern Beaches | 157 | 69.0 | 148 | 64.5 | 190 | 82.1 |
| Gosford – Wyong | 480 | 167.4 | 509 | 174.0 | 574 | 192.9 |
| Hunter | 970 | 169.7 | 1,323 | 229.4 | 1,377 | 236.6 |
| Illawarra | 808 | 210.1 | 1,089 | 279.8 | 1,111 | 282.5 |
| Richmond – Tweed | 382 | 183.0 | 499 | 236.3 | 466 | 219.0 |
| Mid-North Coast | 659 | 243.4 | 757 | 277.4 | 826 | 300.3 |
| Northern | 314 | 179.9 | 384 | 221.7 | 403 | 234.0 |
| North Western | 394 | 336.0 | 385 | 329.4 | 410 | 352.1 |
| Central West | 338 | 195.4 | 396 | 229.3 | 390 | 225.1 |
| South Eastern | 302 | 166.7 | 358 | 196.2 | 406 | 220.1 |
| Murrumbidgee | 331 | 222.7 | 382 | 256.9 | 445 | 299.0 |
| Murray | 195 | 176.5 | 201 | 182.8 | 297 | 269.7 |
| Far West | 114 | 471.3 | 131 | 555.5 | 164 | 707.0 |
| New South Wales* | 9,639 | 150.7 | 11,073 | 171.3 | 11,695 | 179.0 |

* The total for New South Wales includes 2 recorded incidents in 1999, 10 recorded incidents in 2000 and 9 recorded incidents in 2001 where the offence occurred in a custodial institution.

TABLE 4.28 RECORDED CRIMINAL INCIDENTS, 1999 TO 2001: STATISTICAL DIVISION**PCA DRIVING OFFENCES**

| <i>Statistical Division where offence occurred</i> | <i>Recorded criminal incidents</i> | | | | | |
|--|------------------------------------|--|---------------|--|---------------|--|
| | <i>1999</i> | | <i>2000</i> | | <i>2001</i> | |
| | <i>Number</i> | <i>Rate per 100,000 population</i> | <i>Number</i> | <i>Rate per 100,000 population</i> | <i>Number</i> | <i>Rate per 100,000 population</i> |
| Sydney | 12,099 | 300.1 | 12,126 | 296.8 | 11,839 | 285.9 |
| Inner Sydney | 1,202 | 420.4 | 1,374 | 473.6 | 1,442 | 489.1 |
| Eastern Suburbs | 494 | 201.1 | 622 | 252.6 | 688 | 278.1 |
| St George – Sutherland | 909 | 214.2 | 1,058 | 246.1 | 1,130 | 259.4 |
| Canterbury – Bankstown | 499 | 162.2 | 452 | 145.2 | 492 | 156.6 |
| Fairfield – Liverpool | 1,062 | 318.7 | 969 | 284.6 | 938 | 270.1 |
| Outer South Western Sydney | 972 | 430.4 | 750 | 327.8 | 670 | 288.9 |
| Inner Western Sydney | 289 | 180.3 | 332 | 204.5 | 331 | 201.4 |
| Central Western Sydney | 574 | 198.0 | 626 | 213.5 | 584 | 196.1 |
| Outer Western Sydney | 1,216 | 390.9 | 1,416 | 451.4 | 1,023 | 323.8 |
| Blacktown | 1,081 | 425.2 | 826 | 317.3 | 802 | 307.0 |
| Lower Northern Sydney | 1,359 | 469.3 | 981 | 335.6 | 1,128 | 380.8 |
| Central Northern Sydney | 574 | 147.3 | 560 | 141.9 | 698 | 172.4 |
| Northern Beaches | 976 | 428.6 | 993 | 433.1 | 817 | 353.0 |
| Gosford – Wyong | 892 | 311.0 | 1,167 | 398.9 | 1,096 | 368.3 |
| Hunter | 1,929 | 337.6 | 2,303 | 399.3 | 2,715 | 466.5 |
| Illawarra | 1,143 | 297.2 | 1,150 | 295.5 | 1,114 | 283.3 |
| Richmond – Tweed | 1,148 | 549.8 | 1,270 | 601.5 | 1,371 | 644.3 |
| Mid-North Coast | 1,284 | 474.3 | 1,257 | 460.6 | 1,295 | 470.8 |
| Northern | 882 | 505.3 | 955 | 551.4 | 985 | 571.9 |
| North Western | 751 | 640.5 | 754 | 645.1 | 651 | 559.1 |
| Central West | 905 | 523.2 | 905 | 524.0 | 825 | 476.2 |
| South Eastern | 1,204 | 664.5 | 1,127 | 617.7 | 1,201 | 651.2 |
| Murrumbidgee | 787 | 529.5 | 941 | 632.8 | 839 | 563.8 |
| Murray | 662 | 599.3 | 602 | 547.5 | 605 | 549.4 |
| Far West | 234 | 967.4 | 167 | 708.1 | 131 | 564.7 |
| New South Wales | 23,028 | 360.0 | 23,557 | 364.5 | 23,572 | 360.8 |

* The total for New South Wales includes 1 recorded incident in 2001 where the offence occurred in a custodial institution.

TABLE 4.29 RECORDED CRIMINAL INCIDENTS, 1999 TO 2001: STATISTICAL DIVISION**DRIVE WHILE DISQUALIFIED**

| <i>Statistical Division where offence occurred</i> | <i>Recorded criminal incidents</i> | | | | | |
|--|------------------------------------|--|---------------|--|---------------|--|
| | <i>1999</i> | | <i>2000</i> | | <i>2001</i> | |
| | <i>Number</i> | <i>Rate per 100,000 population</i> | <i>Number</i> | <i>Rate per 100,000 population</i> | <i>Number</i> | <i>Rate per 100,000 population</i> |
| Sydney | 9,880 | 245.0 | 10,300 | 252.1 | 10,750 | 259.6 |
| Inner Sydney | 818 | 286.1 | 1,002 | 345.4 | 985 | 334.1 |
| Eastern Suburbs | 295 | 120.1 | 329 | 133.6 | 345 | 139.4 |
| St George – Sutherland | 572 | 134.8 | 698 | 162.4 | 835 | 191.7 |
| Canterbury – Bankstown | 723 | 235.0 | 796 | 255.8 | 906 | 288.3 |
| Fairfield – Liverpool | 1,938 | 581.6 | 1,728 | 507.6 | 1,337 | 385.1 |
| Outer South Western Sydney | 928 | 411.0 | 803 | 351.0 | 821 | 354.0 |
| Inner Western Sydney | 235 | 146.6 | 313 | 192.8 | 354 | 215.4 |
| Central Western Sydney | 817 | 281.8 | 783 | 267.1 | 1,005 | 337.5 |
| Outer Western Sydney | 898 | 288.7 | 1,017 | 324.2 | 1,076 | 340.6 |
| Blacktown | 1,118 | 439.8 | 1,106 | 424.9 | 1,139 | 436.0 |
| Lower Northern Sydney | 368 | 127.1 | 368 | 125.9 | 380 | 128.3 |
| Central Northern Sydney | 308 | 79.0 | 277 | 70.2 | 379 | 93.6 |
| Northern Beaches | 259 | 113.7 | 259 | 113.0 | 252 | 108.9 |
| Gosford – Wyong | 603 | 210.2 | 821 | 280.6 | 936 | 314.5 |
| Hunter | 1,217 | 213.0 | 1,484 | 257.3 | 1,753 | 301.2 |
| Illawarra | 1,068 | 277.7 | 1,128 | 289.8 | 1,187 | 301.8 |
| Richmond – Tweed | 598 | 286.4 | 718 | 340.1 | 811 | 381.1 |
| Mid-North Coast | 709 | 261.9 | 737 | 270.0 | 872 | 317.0 |
| Northern | 498 | 285.3 | 516 | 297.9 | 700 | 406.4 |
| North Western | 523 | 446.1 | 513 | 438.9 | 494 | 424.2 |
| Central West | 571 | 330.1 | 587 | 339.8 | 562 | 324.4 |
| South Eastern | 538 | 296.9 | 583 | 319.6 | 675 | 366.0 |
| Murrumbidgee | 352 | 236.8 | 472 | 317.4 | 473 | 317.9 |
| Murray | 169 | 153.0 | 227 | 206.5 | 283 | 257.0 |
| Far West | 121 | 500.2 | 105 | 445.2 | 104 | 448.3 |
| New South Wales* | 16,245 | 254.0 | 17,380 | 268.9 | 18,680 | 286.0 |

* The total for New South Wales includes 1 recorded incident in 1999, 10 recorded incidents in 2000 and 16 recorded incidents in 2001 where the offence occurred in a custodial institution.

TABLE 4.30 RECORDED CRIMINAL INCIDENTS, 1999 TO 2001: STATISTICAL DIVISION**DRIVE MANNER/SPEED DANGEROUS**

| <i>Statistical Division where offence occurred</i> | <i>Recorded criminal incidents</i> | | | | | |
|--|------------------------------------|--|---------------|--|---------------|--|
| | <i>1999</i> | | <i>2000</i> | | <i>2001</i> | |
| | <i>Number</i> | <i>Rate per 100,000 population</i> | <i>Number</i> | <i>Rate per 100,000 population</i> | <i>Number</i> | <i>Rate per 100,000 population</i> |
| Sydney | 1,356 | 33.6 | 1,697 | 41.5 | 1,551 | 37.5 |
| Inner Sydney | 120 | 42.0 | 171 | 58.9 | 124 | 42.1 |
| Eastern Suburbs | 47 | 19.1 | 54 | 21.9 | 52 | 21.0 |
| St George – Sutherland | 115 | 27.1 | 159 | 37.0 | 140 | 32.1 |
| Canterbury – Bankstown | 107 | 34.8 | 108 | 34.7 | 151 | 48.1 |
| Fairfield – Liverpool | 161 | 48.3 | 202 | 59.3 | 180 | 51.8 |
| Outer South Western Sydney | 144 | 63.8 | 167 | 73.0 | 125 | 53.9 |
| Inner Western Sydney | 33 | 20.6 | 40 | 24.6 | 36 | 21.9 |
| Central Western Sydney | 82 | 28.3 | 117 | 39.9 | 98 | 32.9 |
| Outer Western Sydney | 164 | 52.7 | 204 | 65.0 | 173 | 54.8 |
| Blacktown | 142 | 55.9 | 211 | 81.1 | 165 | 63.2 |
| Lower Northern Sydney | 49 | 16.9 | 51 | 17.4 | 51 | 17.2 |
| Central Northern Sydney | 46 | 11.8 | 57 | 14.4 | 69 | 17.0 |
| Northern Beaches | 30 | 13.2 | 31 | 13.5 | 27 | 11.7 |
| Gosford – Wyong | 116 | 40.4 | 125 | 42.7 | 160 | 53.8 |
| Hunter | 268 | 46.9 | 279 | 48.4 | 302 | 51.9 |
| Illawarra | 201 | 52.3 | 201 | 51.6 | 223 | 56.7 |
| Richmond – Tweed | 99 | 47.4 | 87 | 41.2 | 146 | 68.6 |
| Mid-North Coast | 151 | 55.8 | 131 | 48.0 | 160 | 58.2 |
| Northern | 96 | 55.0 | 80 | 46.2 | 69 | 40.1 |
| North Western | 122 | 104.1 | 88 | 75.3 | 107 | 91.9 |
| Central West | 101 | 58.4 | 83 | 48.1 | 81 | 46.8 |
| South Eastern | 130 | 71.8 | 110 | 60.3 | 113 | 61.3 |
| Murrumbidgee | 80 | 53.8 | 120 | 80.7 | 111 | 74.6 |
| Murray | 60 | 54.3 | 83 | 75.5 | 108 | 98.1 |
| Far West | 28 | 115.8 | 31 | 131.4 | 18 | 77.6 |
| New South Wales* | 2,693 | 42.1 | 2,992 | 46.3 | 2,989 | 45.8 |

* The total for New South Wales includes 1 recorded incident in 1999 and 2 recorded incidents in 2000 where the offence occurred in a custodial institution.

APPENDICES

APPENDIX 1

| <i>Classification</i> | <i>Offences included</i> |
|-------------------------------------|--|
| Homicide: | |
| Murder | Murder – actual |
| Attempted murder | Murder – attempted Shoot with intent to murder |
| Murder accessory, conspiracy | Murder accessory Murder conspiracy |
| Manslaughter – not driving | Manslaughter |
| Manslaughter – driving | Culpable driving cause death |
| Assault | Actual bodily harm Grievous bodily harm (including malicious wounding) Assault officer Common assault Shoot with intent other than to murder |
| Sexual offences: | |
| Sexual assault | Sexual assault Aggravated sexual assault Assault with intent to have sexual intercourse |
| Indecent assault, act of indecency | Indecent assault Aggravated indecent assault Act of indecency Aggravated act of indecency |
| Other sexual offences | Incest Carnal knowledge Wilful and obscene exposure Indecent communication Peep or pry Other sexual offence |
| Abduction and kidnapping | Abduction and kidnapping |
| Robbery: | |
| Robbery without a weapon | Robbery Robbery with striking Robbery with wounding Other robbery |
| Robbery with a firearm | Armed robbery where weapon is firearm |
| Robbery with a weapon not a firearm | Armed robbery where weapon is not firearm |

APPENDIX 1 continued

| <i>Classification</i> | <i>Offences included</i> |
|--|---|
| Other offences against the person | Intimidation Malicious damage intent injure / endanger Negligent act cause grievous bodily harm Offence against transport service Other offence against the person |
| Theft: | |
| Break and enter – dwelling | Break, enter and steal Break, enter intent to steal Break, enter and intent to commit other felony <i>Note: property breaking includes all living premises, including nursing home, tent, balcony, garden, garage (attached or detached), shed etc.</i> |
| Break and enter – non-dwelling | Break, enter and steal Break, enter intent to steal Break, enter and commit other felony Break, enter and intent to commit other felony |
| Possess implements | Possess implements |
| Receiving | Receiving |
| Goods in custody | Goods in custody Possess property stolen outside NSW |
| Motor vehicle theft | Theft of motor cars, motor cycles, and other modes of transport (excluding marine vessels and aircraft) |
| Steal from motor vehicle | Steal from motor vehicle |
| Steal from retail store | Steal from retail store |
| Steal from dwelling | Steal from dwelling |
| Steal from person | Steal from person |
| Stock theft | Stock theft |
| Fraud | Larceny clerk / servant / bailee Make / use false instrument Embezzlement Fraudulent appropriation Company / corporate offence Deception offence Possess false instrument Publish false misleading statement Corrupt commission / practices Counterfeit currency offence under Commonwealth Crimes Act |
| Other theft | Other stealing |

APPENDIX 1 continued

| <i>Classification</i> | <i>Offences included</i> |
|--|---|
| Demand money with menace | Demand money with menaces |
| Extortion, blackmail | Extortion, blackmail |
| Arson | Malicious damage by fire Destroy by fire – financial gain Destroy by fire – intent injure |
| Malicious damage to property | Malicious damage to property Graffiti Public place – damage fountain / wall Public place – damage shrine / monument |
| Drug offences: | |
| Possession and / or use of cocaine | Possess drug unlawfully, where drug type is cocaine Use or administer drug, where drug type is cocaine |
| Possession and / or use of narcotics | Possess drug unlawfully, where drug type is narcotics Use or administer drug, where drug type is narcotics |
| Possession and / or use of cannabis | Possess drug / plant unlawfully, where drug type is cannabis Use or administer drug, where drug type is cannabis |
| Possession and / or use of other drugs | Possess drug unlawfully, where drug type is not cocaine, narcotics or cannabis Use or administer drug, where drug type is not cocaine, narcotics or cannabis |
| Dealing, trafficking in cocaine | Supply drug where drug type is cocaine |
| Dealing, trafficking in narcotics | Supply drug where drug type is narcotics |
| Dealing, trafficking in cannabis | Supply drug where drug type is cannabis |
| Dealing, trafficking in other drugs | Supply drug where drug type is not cocaine, narcotics or cannabis |
| Cultivating cannabis | Cultivate cannabis plant |
| Importing drugs | Import drugs / plant |
| Other drug offences | Manufacture drug Forge and / or utter prescription Possess drug utensil Other drug offence |
| Offensive behaviour: | |
| Offensive conduct | Offensive conduct |
| Offensive language | Offensive language |
| Prostitution offences | Soliciting / prostitution in public Prostitution – premises Consorting Child prostitution Child pornography Other vice offence |
| Betting and gaming offences | Conduct / play illegal game Own / manage premises – gaming Other gaming offence |

APPENDIX 1 continued

| <i>Classification</i> | <i>Offences included</i> |
|---|---|
| Weapons offences | Possess whilst unlicensed Possess shortened firearm Possess prohibited weapon / article Shorten firearm Firearms, dealer offence Unlawfully discharge firearm Trespass with firearm Use firearm under influence Discharge firearm into premises Firearms, not ensure safekeeping Use prohibited weapon / article Sell prohibited weapon / article Other prohibited weapon / article offence Bomb hoax or threat Possess explosive / dangerous article Carry cutting weapon Other firearm offence Other firearm licensing offence |
| Against justice procedures: | |
| Escapee – Corrective Services custody | Escapee – Corrective Services custody |
| Escapee – Police custody | Escapee – Police custody |
| Escapee – juvenile detention | Escapee – juvenile detention |
| Escapee – other custody | Escapee – other custody |
| Breach Apprehended Violence Order | Breach Apprehended Violence Order – domestic Breach Apprehended Violence Order – personal |
| Breach bail conditions | Breach bail conditions |
| Breach of recognizance | Breach of recognizance |
| Fail to appear | Fail to appear |
| Other offences against justice procedures | Resist / hinder officers Other judicial offence |
| Driving offences: | |
| Culpable driving | Culpable driving cause grievous bodily harm Culpable navigation cause grievous bodily harm |
| PCA | Prescribed concentration alcohol |
| Drive while disqualified | Drive while disqualified / licence cancelled etc. |
| Drive manner / speed dangerous | Drive manner / speed dangerous |
| Other driving offences | Negligent driving Drive under influence drug / alcohol Furious / wanton / menacing driving Registration / insurance offence Breath / drug test offence Speed class A (vehicle under 4.5 tonne) Speed class B & C (vehicle 4.5 tonne and over) Heavy vehicle (non-speeding) offence Motorcycle (non-speeding) offence |

APPENDIX 1 continued

| <i>Classification</i> | <i>Offences included</i> |
|--|---|
| Other driving offences, <i>continued</i> | Public passenger vehicle offence Other driving offence Other traffic offence Other driving licence offence Miscellaneous offence Administrative offence Pedestrian offence Tow truck offence Bicycle offence Safety offence |
| Other offences | Accessory after the fact Consume alcohol in alcohol free zone Consume alcohol in public by minor Custody of offensive implement Family Law offence Immigration / customs offence Intention offences (e.g. armed with intent) Offences under the Telecommunications Act Offences under the Postal Services Act Offences under the Pawnbrokers Act Offences under the Dog Act Offences under the Prevention of Cruelty to Animals Act Offences under the Children (Care and Protection) Act Offences under the Local Government Act Offences under the Bush Fires Act Offences under the Liquor Act Offences under the Registered Clubs Act Offences under the Inclosed Lands Protection Act Offences under the Security (Protection) Industry Act Offences under the Marine / Waterways Act Possess / publish indecent material Public mischief Refuse direction to move on Street offences Transport offences Trespass Other offences |

APPENDIX 2

Map 1: New South Wales Statistical Division boundaries



APPENDIX 2 continued

Map 2: Sydney Statistical Subdivision boundaries



APPENDIX 3

LOCAL GOVERNMENT AREAS IN STATISTICAL DIVISIONS

Sydney Statistical Subdivisions

Inner Sydney

Botany Bay
Leichhardt
Marrickville
South Sydney
Sydney

Outer South Western Sydney

Camden
Campbelltown
Wollondilly

Lower Northern Sydney

Hunters Hill
Lane Cove
Mosman
North Sydney
Ryde
Willoughby

Eastern Suburbs

Randwick
Waverley
Woollahra

Inner Western Sydney

Ashfield
Burwood
Concord
Drummoyne
Strathfield

*Central Northern Sydney**

Baulkham Hills
Hornsby
Ku-ring-gai

St George – Sutherland

Hurstville
Kogarah
Rockdale
Sutherland

Central Western Sydney

Auburn
Holroyd
Parramatta

Northern Beaches

Manly
Pittwater
Warringah

Canterbury – Bankstown

Bankstown
Canterbury

Outer Western Sydney

Blue Mountains
Hawkesbury
Penrith

Gosford – Wyong

Gosford
Wyong

Fairfield – Liverpool

Fairfield
Liverpool

*Blacktown**

Blacktown

* In previous reports, the Statistical Subdivision and Local Government Area boundaries, as defined by the ABS, were as follows:

- Blacktown – Baulkham Hills SSD includes Blacktown LGA and Baulkham Hills LGA,
- Hornsby – Ku-ring-gai SSD includes Hornsby LGA and Ku-ring-gai LGA.

APPENDIX 3 continued

NSW Statistical Divisions

| | | | |
|---------------------|----------------------|-------------------------|------------------------|
| <i>Hunter</i> | <i>Illawarra</i> | <i>Richmond – Tweed</i> | <i>Mid-North Coast</i> |
| Cessnock | Kiama | Ballina | Bellingen |
| Dungog | Shellharbour | Byron | Coffs Harbour |
| Gloucester | Shoalhaven | Kyogle | Copmanhurst |
| Great Lakes | Wingecarribee | Lismore | Grafton |
| Lake Macquarie | Wollongong | Richmond Valley | Greater Taree |
| Maitland | | Tweed | Hastings |
| Merriwa | | | Kempsey |
| Murrurundi | | | Lord Howe Island |
| Muswellbrook | | | Maclean |
| Newcastle | | | Nambucca |
| Port Stephens | | | Pristine Waters |
| Scone | | | |
| Singleton | | | |
| <i>Northern</i> | <i>North Western</i> | <i>Central West</i> | <i>South Eastern</i> |
| Armidale Dumaresq | Bogan | Bathurst | Bega Valley |
| Barraba | Bourke | Bland | Bombala |
| Bingara | Brewarrina | Blayney | Boorowa |
| Glen Innes | Cobar | Cabonne | Cooma-Monaro |
| Gunnedah | Coolah | Cowra | Crookwell |
| Guyra | Coonabarabran | Evans | Eurobodalla |
| Inverell | Coonamble | Forbes | Goulburn |
| Manilla | Dubbo | Greater Lithgow | Gunning |
| Moree Plains | Gilgandra | Lachlan | Harden |
| Narrabri | Mudgee | Oberon | Mulwaree |
| Nundle | Narromine | Orange | Queanbeyan |
| Parry | Walgett | Parkes | Snowy River |
| Quirindi | Warren | Rylstone | Tallaganda |
| Severn | Wellington | Weddin | Yarrowlumla |
| Tamworth | | | Yass |
| Tenterfield | | | Young |
| Uralla | | | |
| Walcha | | | |
| Yallaroi | | | |
| <i>Murrumbidgee</i> | <i>Murray</i> | <i>Far West</i> | |
| Carrathool | Albury | Broken Hill | |
| Coolamon | Balranald | Central Darling | |
| Cootamundra | Berrigan | Unincorporated Far West | |
| Griffith | Conargo | | |
| Gundagai | Corowa | | |
| Hay | Culcairn | | |
| Junee | Deniliquin | | |
| Leeton | Holbrook | | |
| Lockhart | Hume | | |
| Murrumbidgee | Jerilderie | | |
| Narrandera | Murray | | |
| Temora | Tumbarumba | | |
| Tumut | Urana | | |
| Wagga Wagga | Wakool | | |
| | Wentworth | | |
| | Windouran | | |